

Data Path : Z:\VOASRV\HPCHEM1\MSVOA X\DATA\VX081018\  
 Data File : VX003982.D  
 Acq On : 10 Aug 2018 17:37  
 Operator : JC/MD  
 Sample : J4397-09  
 Misc : 5.0mL/MSVOA X/WATER  
 ALS Vial : 19 Sample Multiplier: 1

Instrument :  
 MSVOA\_X  
 ClientSampleId :  
 FIELD-BLANK

Integration Parameters: RTEINT.P  
 Integrator: RTE  
 Smoothing : ON Filtering: 5  
 Sampling : 1 Min Area: 3 % of largest Peak  
 Start Thrs: 0.2 Max Peaks: 100  
 Stop Thrs : 0 Peak Location: TOP

If leading or trailing edge < 100 prefer < Baseline drop else tangent >  
 Peak separation: 5

Method : Z:\VOASRV\HPCHEM1\MSVOA\_X\METHOD\82X080618W.M  
 Title : SW846 8260

Signal : TIC

peak #	R.T. min	first scan	max scan	last scan	PK TY	peak height	corr. area	corr. % max.	% of total
1	1.075	68	80	94	rBV	900619	1221332	74.00%	12.930%
2	1.605	159	167	171	rVB3	9550	19084	1.16%	0.202%
3	2.599	323	330	337	rBV	20177	38438	2.33%	0.407%
4	4.739	670	681	693	rBV2	12828	45719	2.77%	0.484%
5	5.507	795	807	821	rBV2	199239	569347	34.50%	6.028%
6	5.665	821	833	853	rVB	281903	792023	47.99%	8.385%
7	6.074	888	900	913	rBV	217791	576495	34.93%	6.103%
8	6.866	1019	1030	1045	rBV	441773	1027811	62.28%	10.882%
9	8.720	1326	1334	1349	rBV	1094631	1650381	100.00%	17.473%
10	10.116	1557	1563	1573	rBV	911932	1201122	72.78%	12.717%
11	11.140	1725	1731	1747	rBV	874216	1049563	63.60%	11.112%
12	12.079	1879	1885	1894	rBV	1037419	1254045	75.99%	13.277%

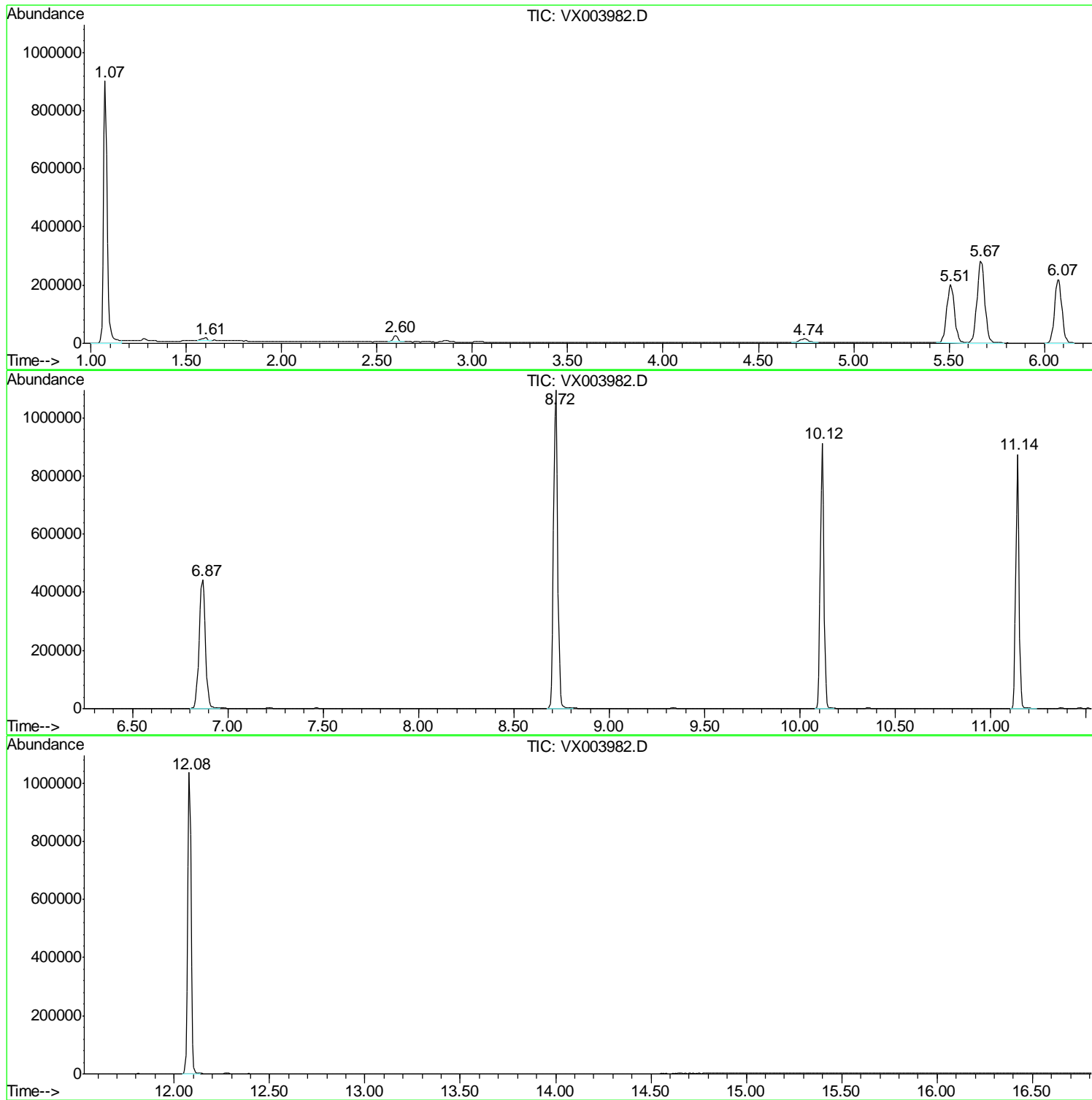
Sum of corrected areas: 9445360

Data Path : Z:\VOASRV\HPCHEM1\MSVOA X\DATA\VX081018\  
Data File : VX003982.D  
Acq On : 10 Aug 2018 17:37  
Operator : JC/MD  
Sample : J4397-09  
Misc : 5.0mL/MSVOA X/WATER  
ALS Vial : 19 Sample Multiplier: 1

Instrument :  
MSVOA\_X  
ClientSampled :  
FIELD-BLANK

Quant Method : Z:\VOASRV\HPCHEM1\MSVOA\_X\METHOD\82X080618W.M  
Quant Title : SW846 8260

TIC Library : C:\DATABASE\NIST11.L  
TIC Integration Parameters: LSCINT.P



Data Path : Z:\VOASRV\HPCHEM1\MSVOA\_X\DATA\VX081018\  
Data File : VX003982.D  
Acq On : 10 Aug 2018 17:37  
Operator : JC/MD  
Sample : J4397-09  
Misc : 5.0mL/MSVOA\_X/WATER  
ALS Vial : 19 Sample Multiplier: 1

Instrument :  
MSVOA\_X  
ClientSampleId :  
FIELD-BLANK

Quant Method : Z:\VOASRV\HPCHEM1\MSVOA\_X\METHOD\82X080618W.M  
Quant Title : SW846 8260

TIC Library : C:\DATABASE\NIST11.L  
TIC Integration Parameters: LSCINT.P

No Library Search Compounds Detected

\*\*\*\*\*

Data Path : Z:\VOASRV\HPCHEM1\MSVOA\_X\DATA\VX081018\  
Data File : VX003982.D  
Acq On : 10 Aug 2018 17:37  
Operator : JC/MD  
Sample : J4397-09  
Misc : 5.0mL/MSVOA\_X/WATER  
ALS Vial : 19 Sample Multiplier: 1

Instrument :  
MSVOA\_X  
ClientSampleId :  
FIELD-BLANK

Quant Method : Z:\VOASRV\HPCHEM1\MSVOA\_X\METHOD\82X080618W.M  
Quant Title : SW846 8260

TIC Library : C:\DATABASE\NIST11.L  
TIC Integration Parameters: LSCINT.P

TIC Top Hit name	RT	EstConc	Units	Response	--Internal Standard--			
					#	RT	Resp	Conc

---