

Data Path : Z:\VOASRV\HPCHEM1\MSVOA X\DATA\VX081219\  
 Data File : VX011485.D  
 Acq On : 12 Aug 2019 15:52  
 Operator : JC/SP  
 Sample : K4278-09  
 Misc : 5.0mL/MSVOA X/WATER  
 ALS Vial : 15 Sample Multiplier: 1

Instrument :  
 MSVOA\_X  
 ClientSampleId :  
 Z3-0708

Quant Time: Aug 13 08:25:05 2019  
 Quant Method : Z:\VOASRV\HPCHEM1\MSVOA\_X\METHOD\82X080119W.M  
 Quant Title : SW846 8260  
 QLast Update : Fri Aug 02 01:55:00 2019  
 Response via : Initial Calibration

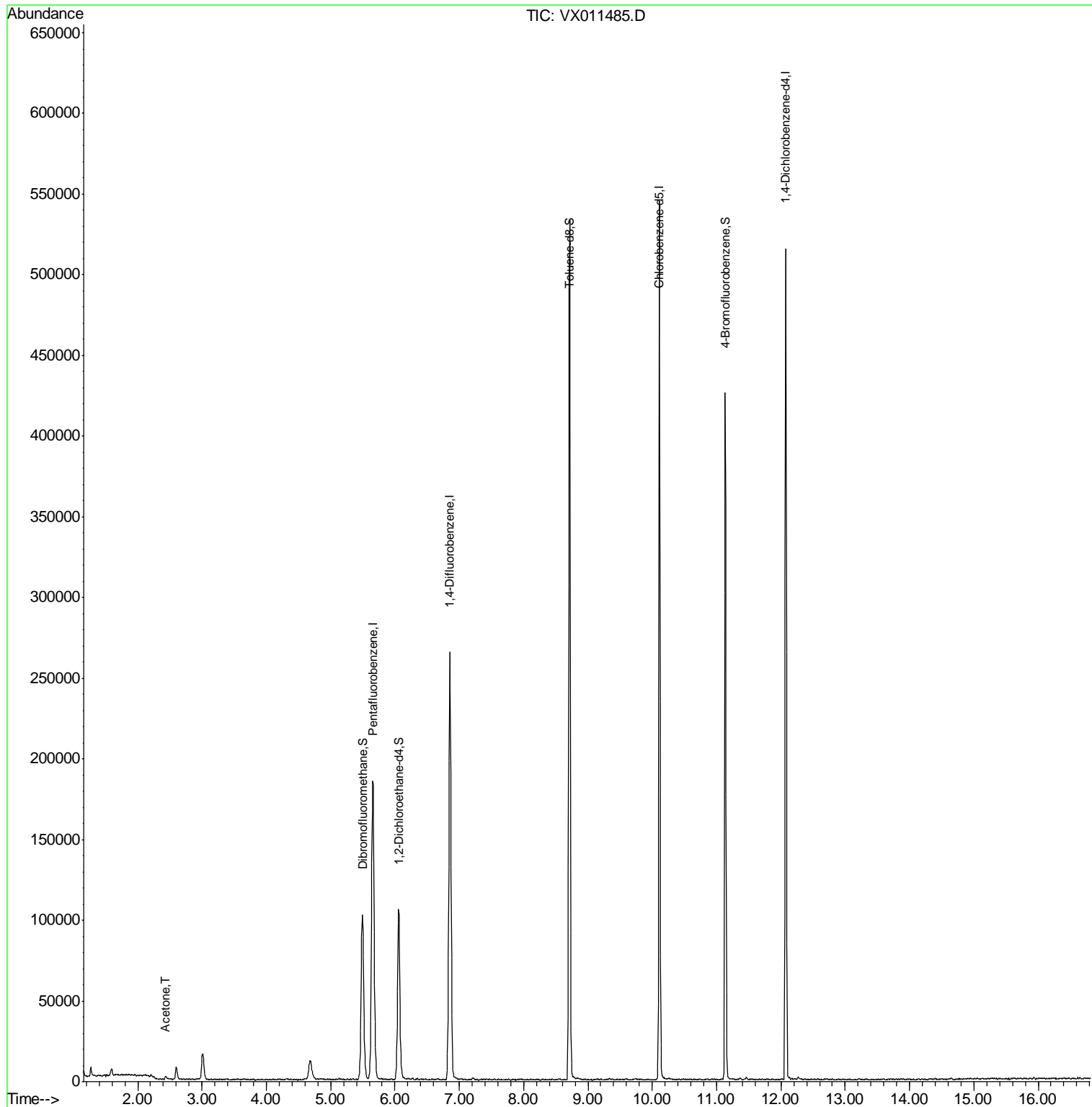
Internal Standards	R.T.	QIon	Response	Conc	Units	Dev(Min)
1) Pentafluorobenzene	5.65	168	179654	50.00	ug/l	0.00
34) 1,4-Difluorobenzene	6.85	114	272971	50.00	ug/l	0.00
63) Chlorobenzene-d5	10.11	117	245282	50.00	ug/l	0.00
72) 1,4-Dichlorobenzene-d4	12.08	152	110297	50.00	ug/l	0.00
System Monitoring Compounds						
33) 1,2-Dichloroethane-d4	6.06	65	100477	55.54	ug/l	0.00
Spiked Amount	50.000		Recovery	=	111.08%	
35) Dibromofluoromethane	5.49	113	84341	47.32	ug/l	0.00
Spiked Amount	50.000		Recovery	=	94.64%	
50) Toluene-d8	8.71	98	322248	47.90	ug/l	0.00
Spiked Amount	50.000		Recovery	=	95.80%	
62) 4-Bromofluorobenzene	11.13	95	105254	43.82	ug/l	0.00
Spiked Amount	50.000		Recovery	=	87.64%	
Target Compounds						
16) Acetone	2.43	43	1882	2.185	ug/l	99

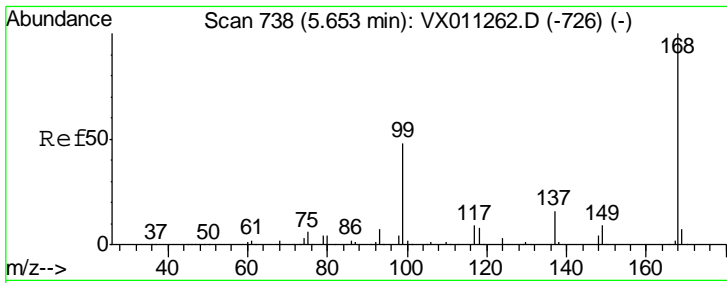
(#) = qualifier out of range (m) = manual integration (+) = signals summed

Data Path : Z:\VOASRV\HPCHEM1\MSVOA X\DATA\VX081219\  
 Data File : VX011485.D  
 Acq On : 12 Aug 2019 15:52  
 Operator : JC/SP  
 Sample : K4278-09  
 Misc : 5.0mL/MSVOA X/WATER  
 ALS Vial : 15 Sample Multiplier: 1

Instrument :  
 MSVOA\_X  
 ClientSampled :  
 Z3-0708

Quant Time: Aug 13 08:25:05 2019  
 Quant Method : Z:\VOASRV\HPCHEM1\MSVOA\_X\METHOD\82X080119W.M  
 Quant Title : SW846 8260  
 QLast Update : Fri Aug 02 01:55:00 2019  
 Response via : Initial Calibration

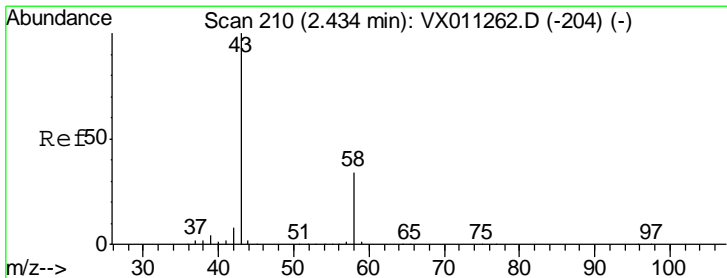
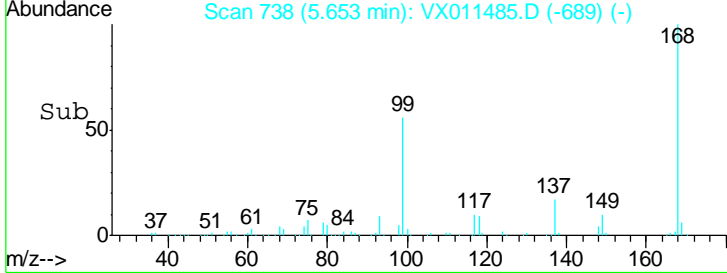
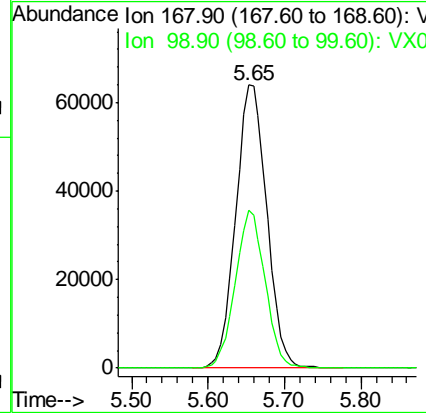
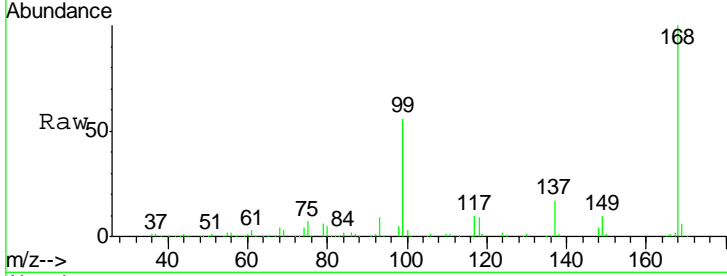




#1  
 Pentafluorobenzene  
 Concen: 50.000 ug/l  
 RT: 5.65 min Scan# 738  
 Delta R.T. 0.00 min  
 Lab File: VX011485.D  
 Acq: 12 Aug 2019 15:52

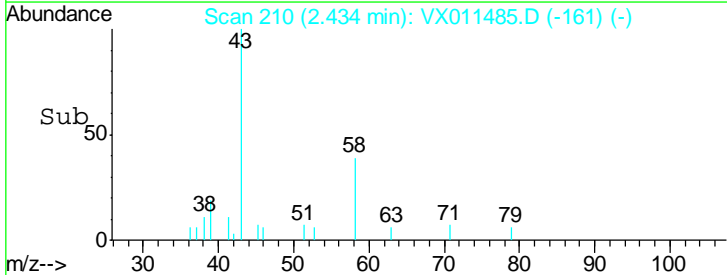
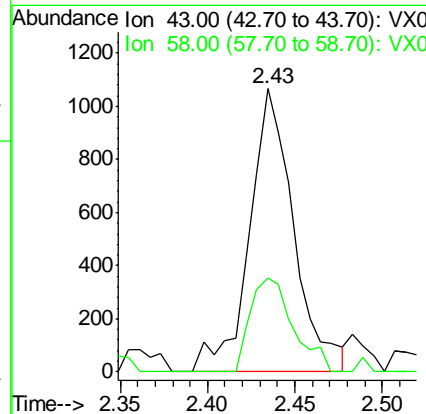
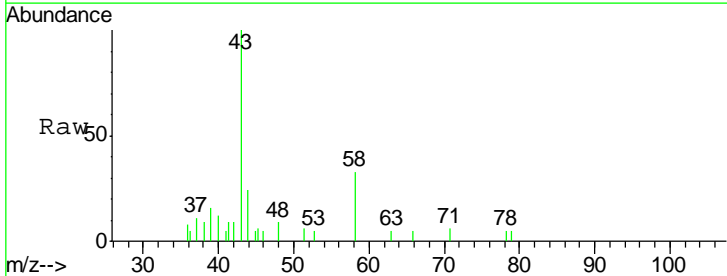
Instrument : MSVOA\_X  
 ClientSampled : Z3-0708

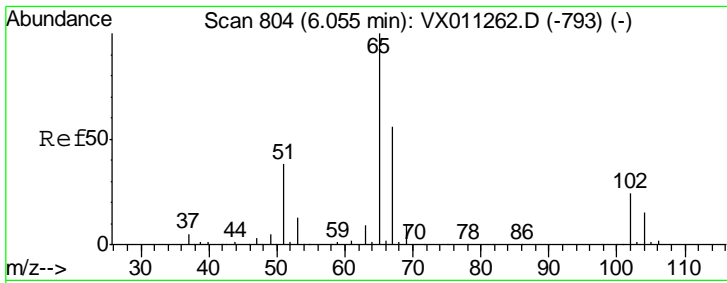
Tgt Ion	Resp	Lower	Upper
168	100		
99	55.8	38.5	57.7



#16  
 Acetone  
 Concen: 2.185 ug/l  
 RT: 2.43 min Scan# 210  
 Delta R.T. 0.00 min  
 Lab File: VX011485.D  
 Acq: 12 Aug 2019 15:52

Tgt Ion	Resp	Lower	Upper
43	100		
58	33.4	27.4	41.0

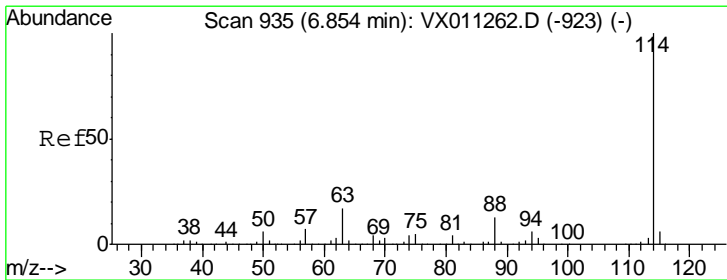
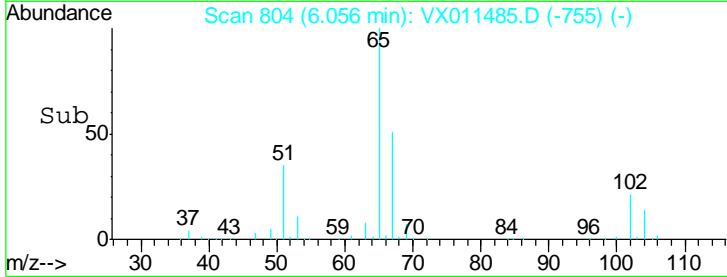
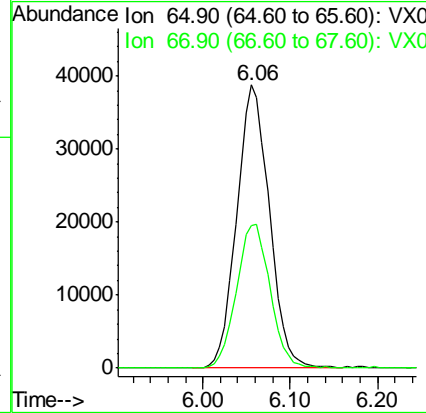
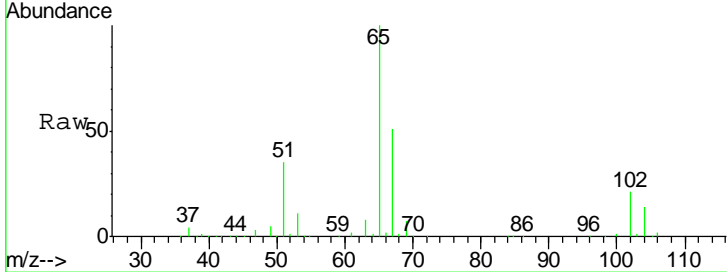




#33  
 1,2-Dichloroethane-d4  
 Concen: 55.536 ug/l  
 RT: 6.06 min Scan# 804  
 Delta R.T. 0.00 min  
 Lab File: VX011485.D  
 Acq: 12 Aug 2019 15:52

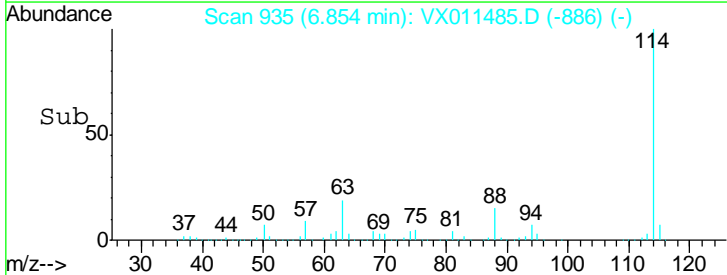
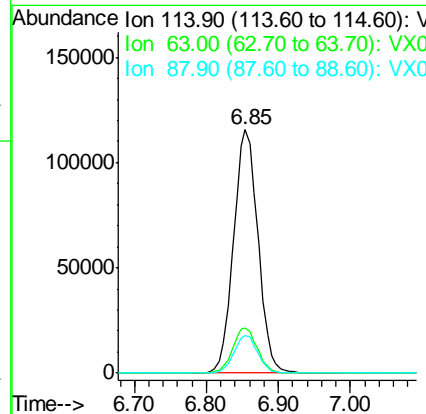
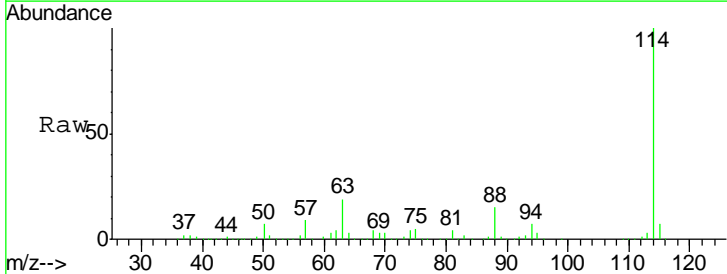
Instrument :  
 MSVOA\_X  
 ClientSampled :  
 Z3-0708

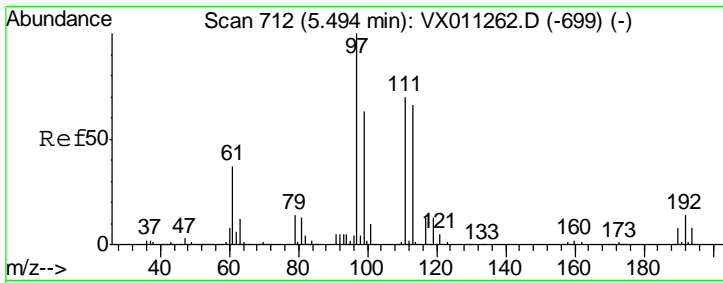
Tgt Ion	Resp	Lower	Upper
65	100477		
67	52.6	0.0	110.6



#34  
 1,4-Difluorobenzene  
 Concen: 50.000 ug/l  
 RT: 6.85 min Scan# 935  
 Delta R.T. 0.00 min  
 Lab File: VX011485.D  
 Acq: 12 Aug 2019 15:52

Tgt Ion	Resp	Lower	Upper
114	272971		
63	18.7	0.0	34.0
88	15.4	0.0	26.4

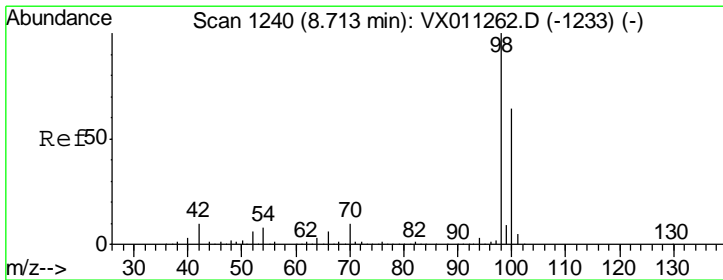
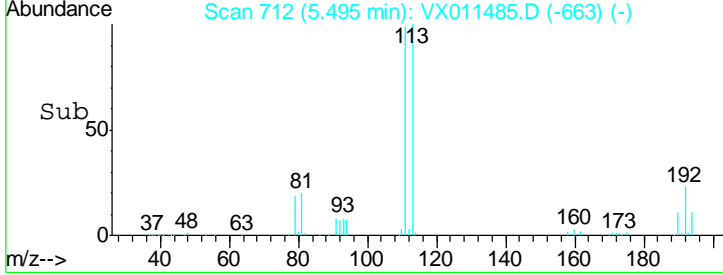
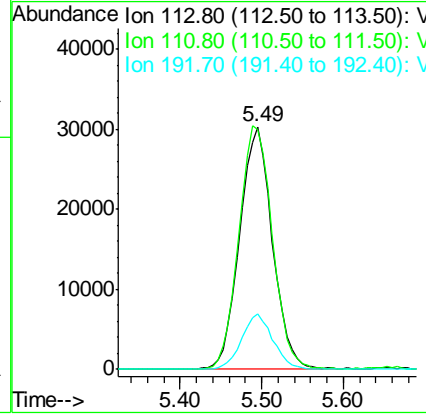
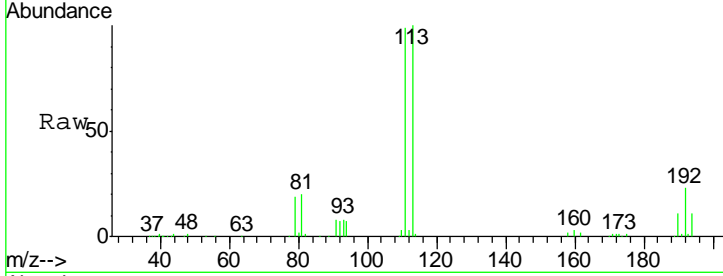




#35  
 Dibromofluoromethane  
 Concen: 47.325 ug/l  
 RT: 5.49 min Scan# 712  
 Delta R.T. 0.00 min  
 Lab File: VX011485.D  
 Acq: 12 Aug 2019 15:52

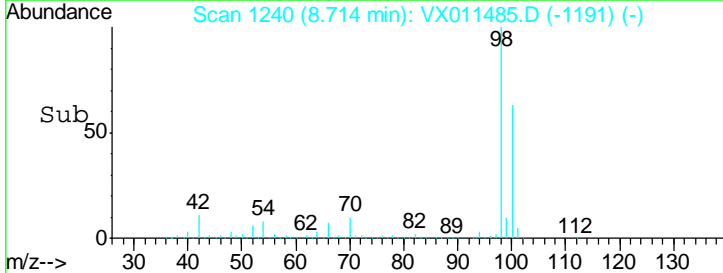
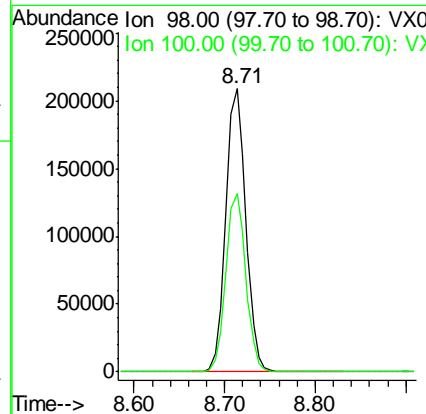
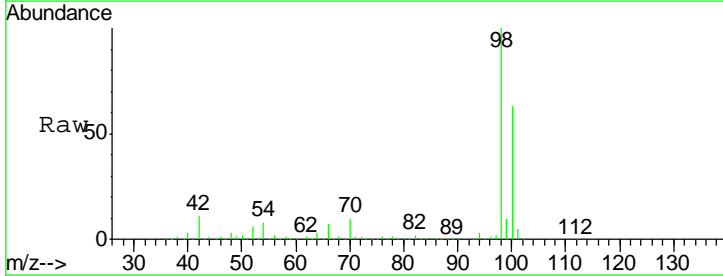
Instrument :  
 MSVOA\_X  
 ClientSampled :  
 Z3-0708

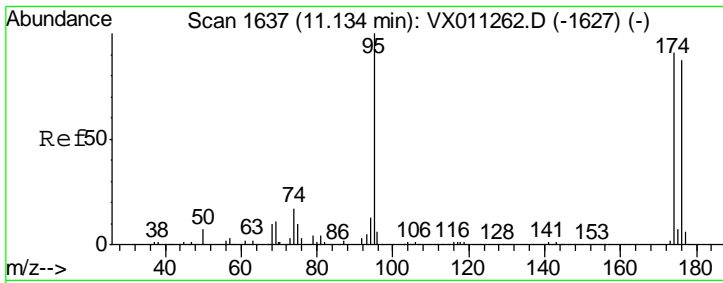
Tgt Ion	Resp	Lower	Upper
113	84341		
111	103.1	81.9	122.9
192	21.9	17.8	26.8



#50  
 Toluene-d8  
 Concen: 47.903 ug/l  
 RT: 8.71 min Scan# 1240  
 Delta R.T. 0.00 min  
 Lab File: VX011485.D  
 Acq: 12 Aug 2019 15:52

Tgt Ion	Resp	Lower	Upper
98	322248		
100	63.0	51.7	77.5



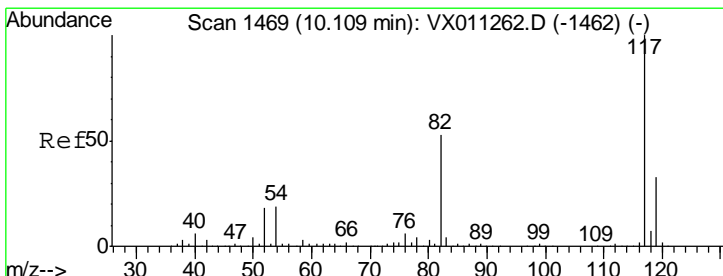
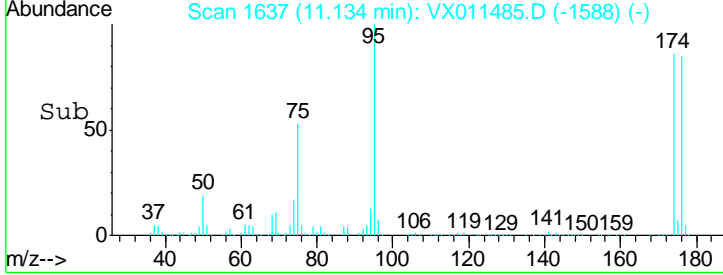
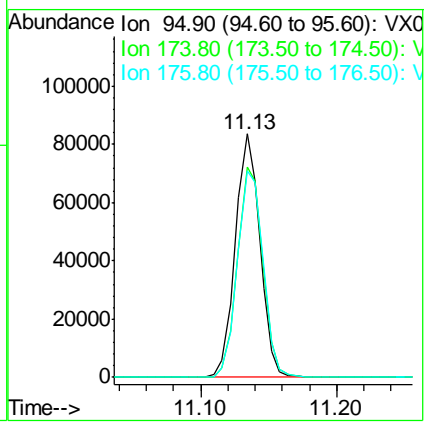
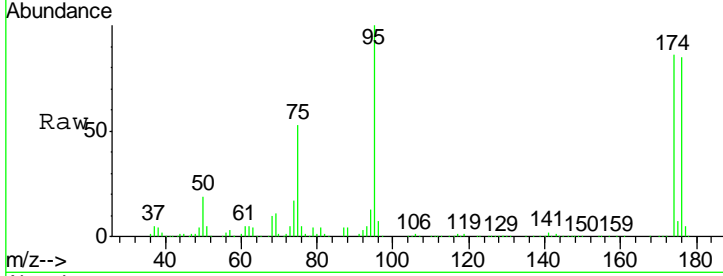


#62  
 4-Bromofluorobenzene  
 Concen: 43.823 ug/l  
 RT: 11.13 min Scan# 1637  
 Delta R.T. 0.00 min  
 Lab File: VX011485.D  
 Acq: 12 Aug 2019 15:52

Instrument :  
 MSVOA\_X  
 ClientSampled :  
 Z3-0708

Tot Ion: 95 Resp: 105254

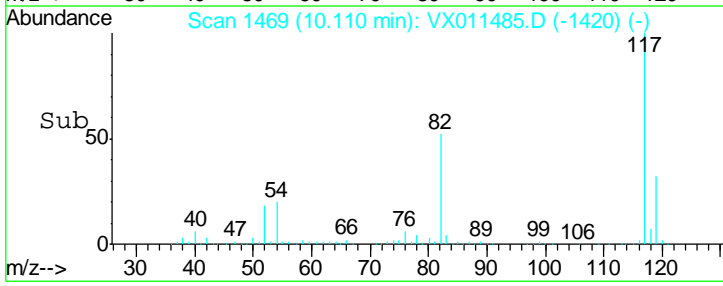
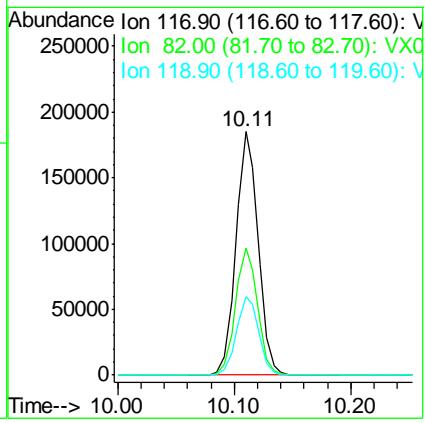
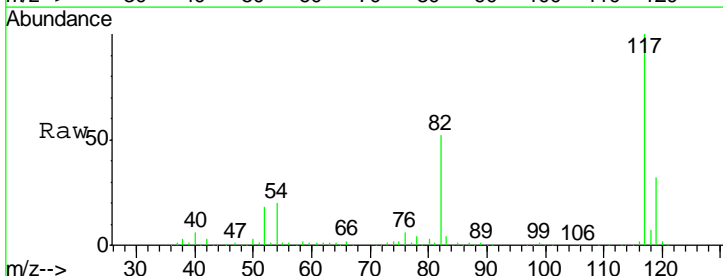
Ion	Ratio	Lower	Upper
95	100		
174	89.1	0.0	191.2
176	88.9	0.0	184.8

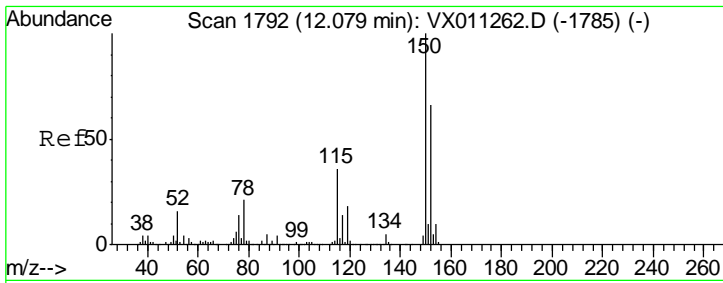


#63  
 Chlorobenzene-d5  
 Concen: 50.000 ug/l  
 RT: 10.11 min Scan# 1469  
 Delta R.T. 0.00 min  
 Lab File: VX011485.D  
 Acq: 12 Aug 2019 15:52

Tgt Ion: 117 Resp: 245282

Ion	Ratio	Lower	Upper
117	100		
82	52.2	42.2	63.2
119	32.3	26.6	39.8





#72  
 1,4-Dichlorobenzene-d4  
 Concen: 50.000 ug/l  
 RT: 12.08 min Scan# 1792  
 Delta R.T. 0.00 min  
 Lab File: VX011485.D  
 Acq: 12 Aug 2019 15:52

Instrument : MSVOA\_X  
 ClientSampled : Z3-0708

Tot Ion	Resp	Lower	Upper
152	110297		
115	56.6	40.0	119.9
150	157.7	0.0	350.4

