

Data Path : Z:\VOASRV\HPCHEM1\MSVOA X\DATA\VX081219\  
 Data File : VX011510.D  
 Acq On : 13 Aug 2019 02:23  
 Operator : JC/SP  
 Sample : K4230-23  
 Misc : 5.0mL/MSVOA X/WATER  
 ALS Vial : 42 Sample Multiplier: 1

Instrument :  
 MSVOA\_X  
 ClientSampleId :  
 2S-D2-(0)

Quant Time: Aug 13 09:23:59 2019  
 Quant Method : Z:\VOASRV\HPCHEM1\MSVOA\_X\METHOD\82X080119W.M  
 Quant Title : SW846 8260  
 QLast Update : Fri Aug 02 01:55:00 2019  
 Response via : Initial Calibration

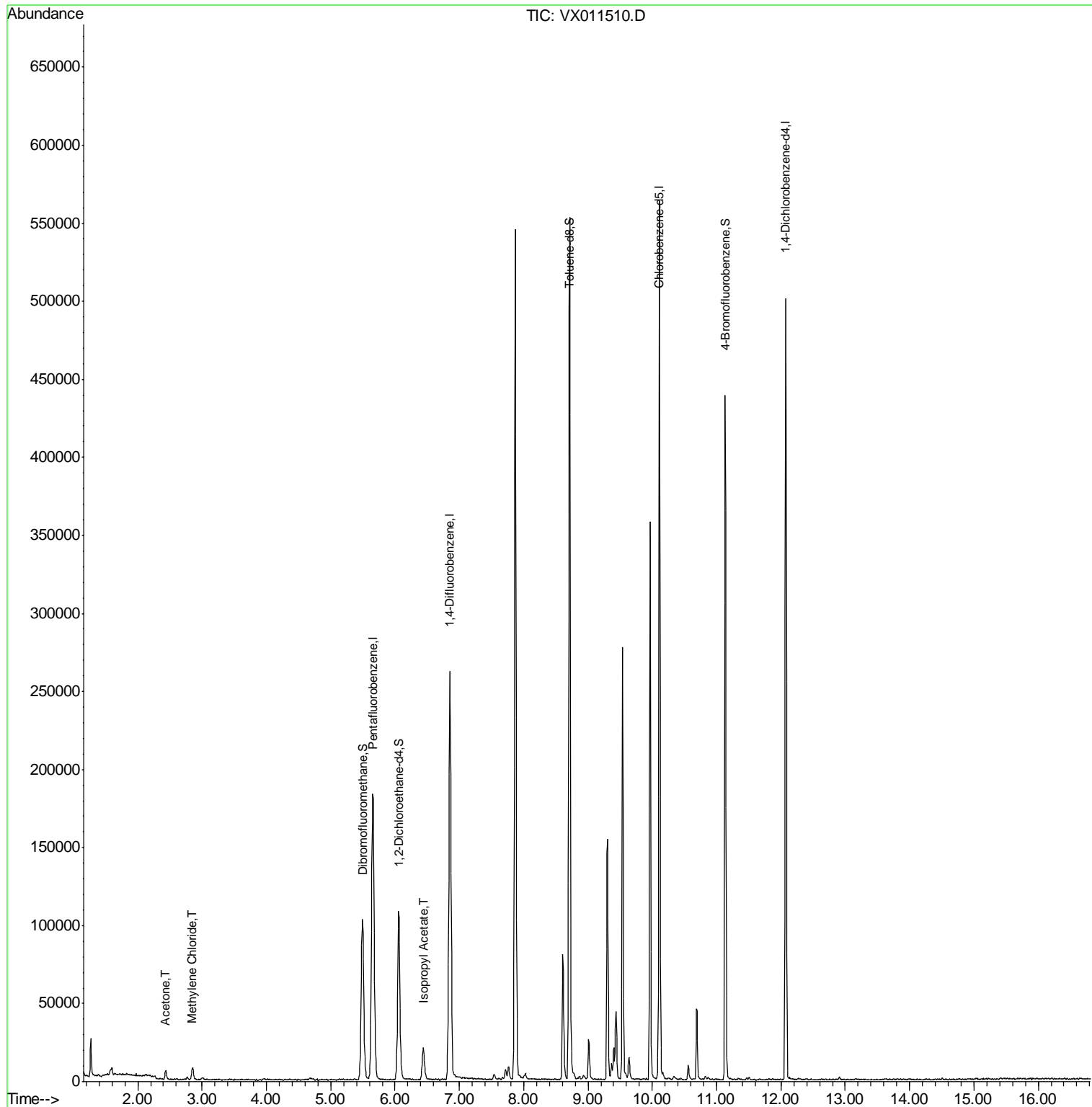
Internal Standards	R.T.	QIon	Response	Conc	Units	Dev(Min)
1) Pentafluorobenzene	5.65	168	179055	50.00	ug/l	0.00
34) 1,4-Difluorobenzene	6.85	114	272414	50.00	ug/l	0.00
63) Chlorobenzene-d5	10.11	117	247796	50.00	ug/l	0.00
72) 1,4-Dichlorobenzene-d4	12.08	152	109681	50.00	ug/l	0.00
System Monitoring Compounds						
33) 1,2-Dichloroethane-d4	6.06	65	100621	55.80	ug/l	0.00
Spiked Amount				50.000		
			Recovery	=	111.60%	
35) Dibromofluoromethane	5.49	113	84735	47.64	ug/l	0.00
Spiked Amount				50.000		
			Recovery	=	95.28%	
50) Toluene-d8	8.71	98	323975	48.26	ug/l	0.00
Spiked Amount				50.000		
			Recovery	=	96.52%	
62) 4-Bromofluorobenzene	11.13	95	105826	44.15	ug/l	0.00
Spiked Amount				50.000		
			Recovery	=	88.30%	
Target Compounds						
					Qvalue	
16) Acetone	2.43	43	6377	7.430	ug/l	99
20) Methylene Chloride	2.85	84	3655	1.944	ug/l	93
43) Isopropyl Acetate	6.44	43	27169	7.123	ug/l	99

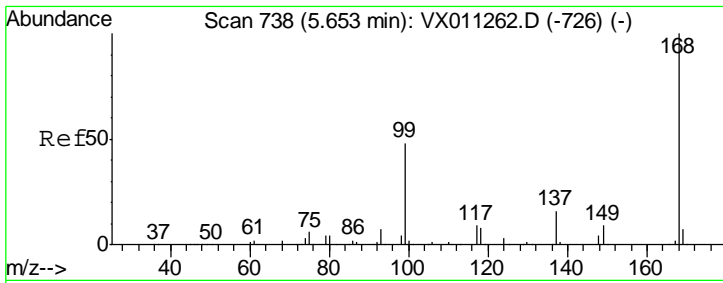
(#) = qualifier out of range (m) = manual integration (+) = signals summed

Data Path : Z:\VOASRV\HPCHEM1\MSVOA X\DATA\VX081219\  
 Data File : VX011510.D  
 Acq On : 13 Aug 2019 02:23  
 Operator : JC/SP  
 Sample : K4230-23  
 Misc : 5.0mL/MSVOA X/WATER  
 ALS Vial : 42 Sample Multiplier: 1

Instrument :  
 MSVOA\_X  
 ClientSampleId :  
 2S-D2-(0)

Quant Time: Aug 13 09:23:59 2019  
 Quant Method : Z:\VOASRV\HPCHEM1\MSVOA\_X\METHOD\82X080119W.M  
 Quant Title : SW846 8260  
 QLast Update : Fri Aug 02 01:55:00 2019  
 Response via : Initial Calibration

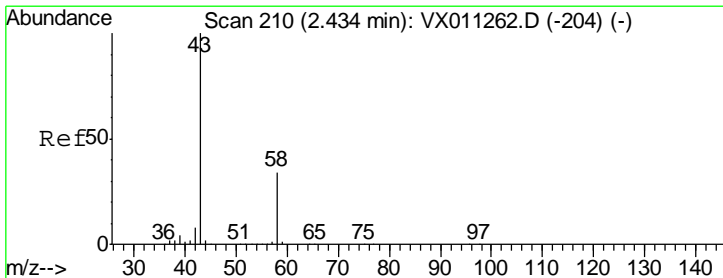
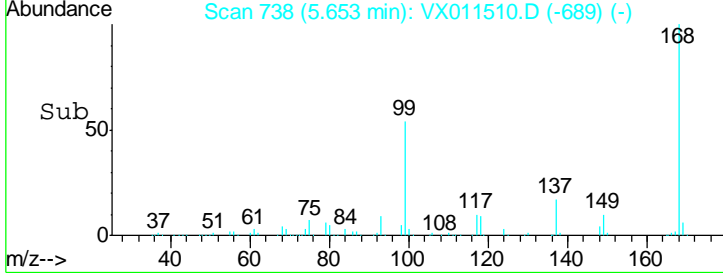
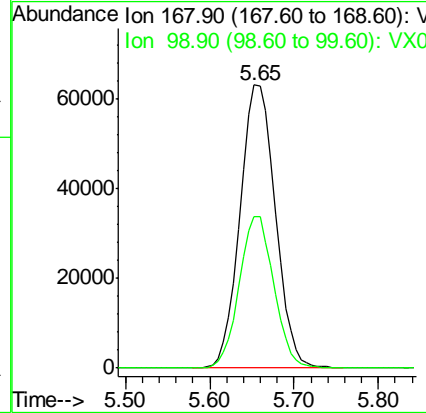
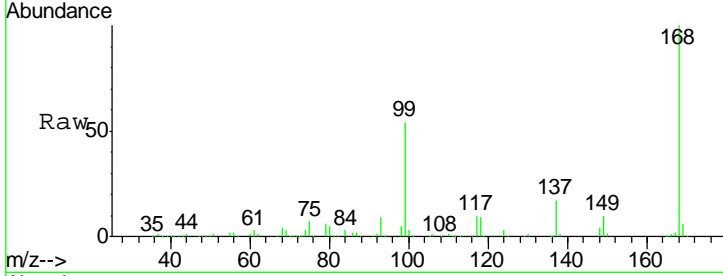




#1  
 Pentafluorobenzene  
 Concen: 50.000 ug/l  
 RT: 5.65 min Scan# 738  
 Delta R.T. 0.00 min  
 Lab File: VX011510.D  
 Acq: 13 Aug 2019 02:23

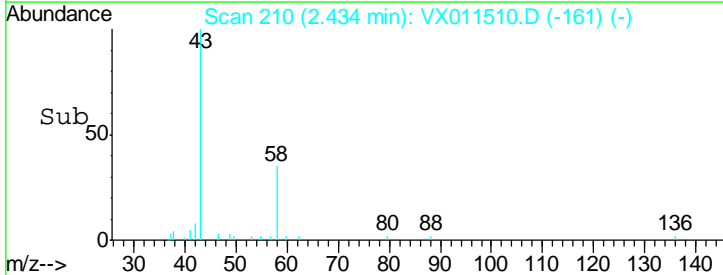
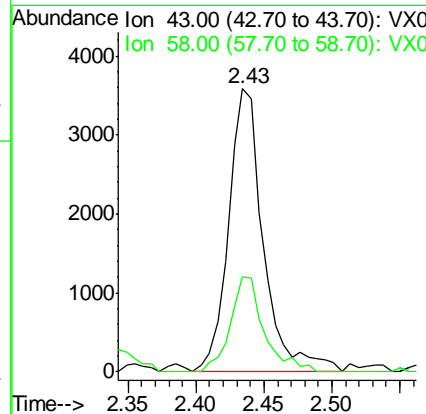
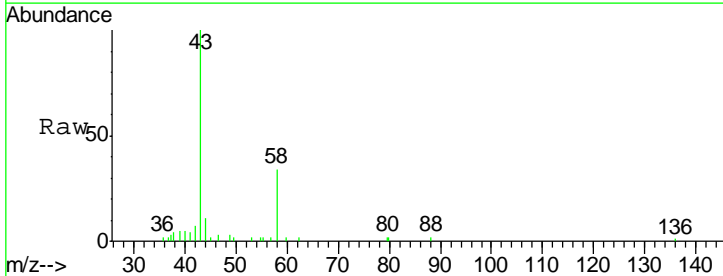
Instrument :  
 MSVOA\_X  
 ClientSampled :  
 2S-D2-(0)

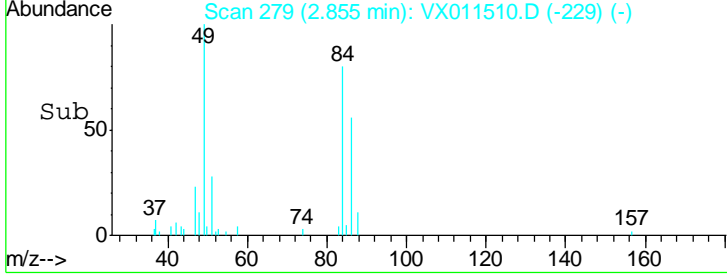
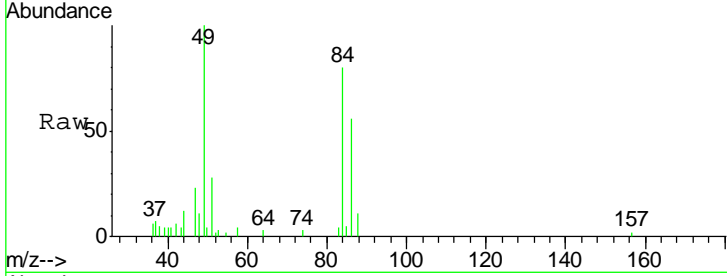
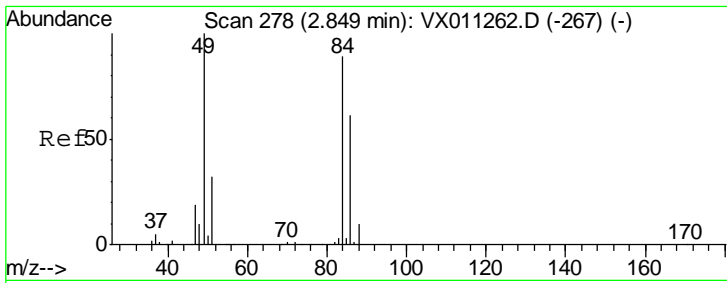
Tgt Ion: 168 Resp: 179055  
 Ion Ratio Lower Upper  
 168 100  
 99 53.4 38.5 57.7



#16  
 Acetone  
 Concen: 7.430 ug/l  
 RT: 2.43 min Scan# 210  
 Delta R.T. 0.00 min  
 Lab File: VX011510.D  
 Acq: 13 Aug 2019 02:23

Tgt Ion: 43 Resp: 6377  
 Ion Ratio Lower Upper  
 43 100  
 58 33.6 27.4 41.0

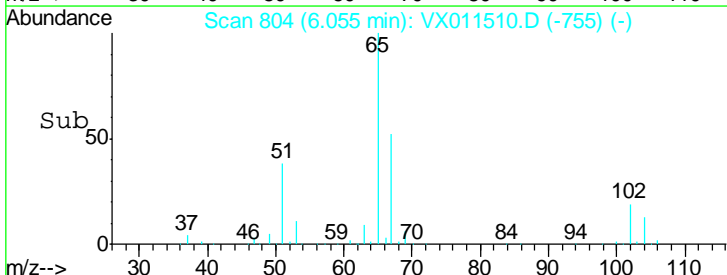
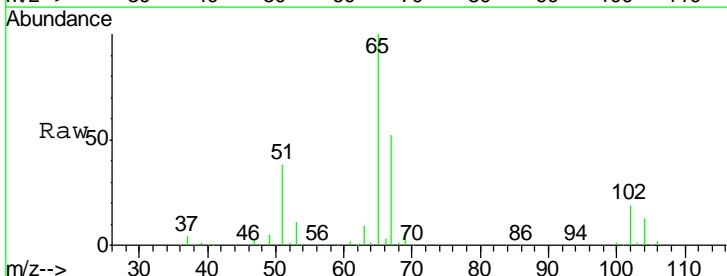
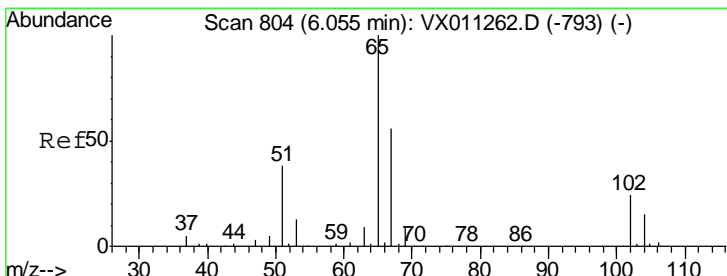
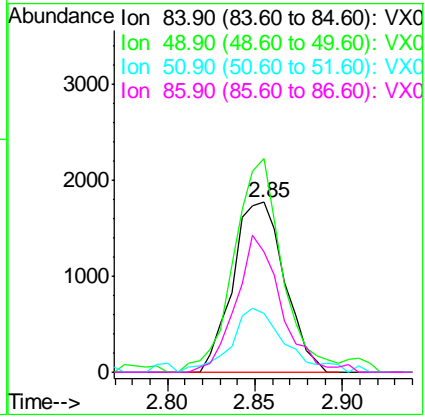




#20  
 Methylene Chloride  
 Concen: 1.944 ug/l  
 RT: 2.85 min Scan# 279  
 Delta R.T. 0.01 min  
 Lab File: VX011510.D  
 Acq: 13 Aug 2019 02:23

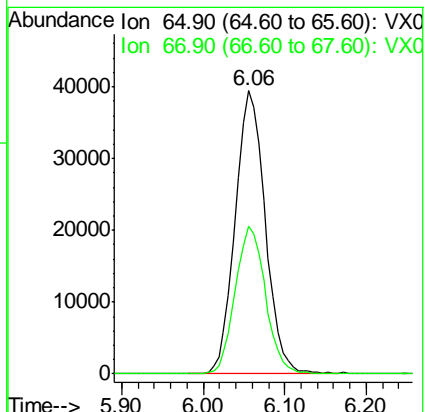
Instrument :  
 MSVOA\_X  
 ClientSampled :  
 2S-D2-(0)

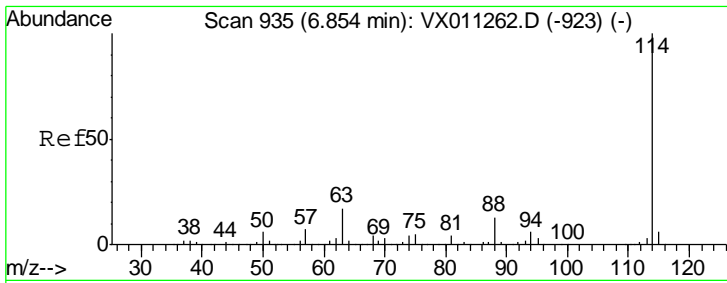
Tgt Ion	Resp	Lower	Upper
84	3655		
84	100		
49	120.5	89.3	133.9
51	31.3	28.3	42.5
86	70.9	54.5	81.7



#33  
 1,2-Dichloroethane-d4  
 Concen: 55.802 ug/l  
 RT: 6.06 min Scan# 804  
 Delta R.T. 0.00 min  
 Lab File: VX011510.D  
 Acq: 13 Aug 2019 02:23

Tgt Ion	Resp	Lower	Upper
65	100621		
65	100		
67	52.5	0.0	110.6

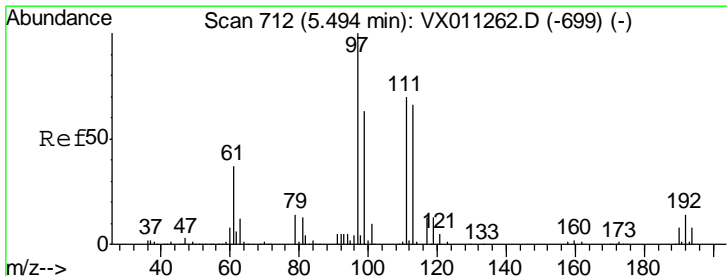
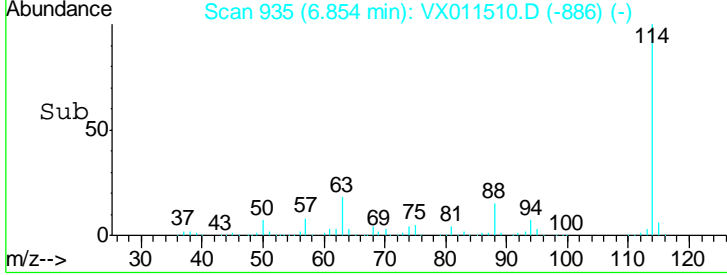
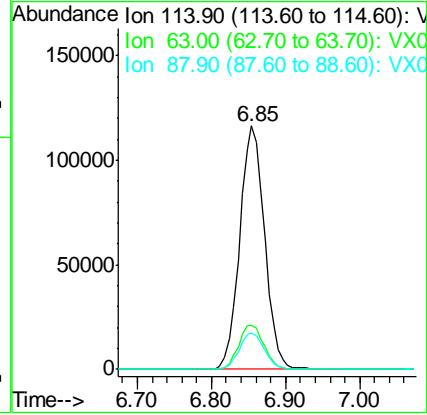
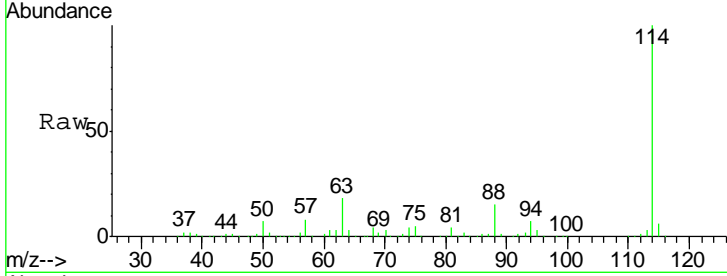




#34  
 1,4-Difluorobenzene  
 Concen: 50.000 ug/l  
 RT: 6.85 min Scan# 935  
 Delta R.T. 0.00 min  
 Lab File: VX011510.D  
 Acq: 13 Aug 2019 02:23

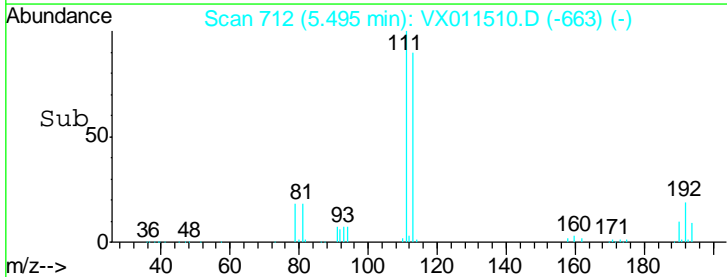
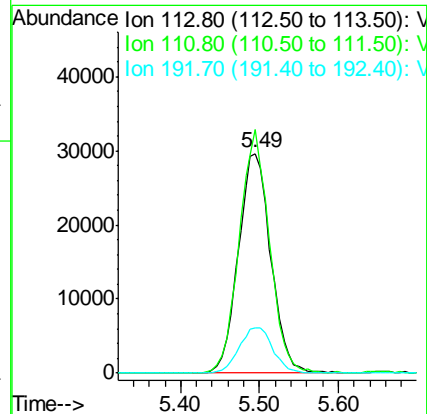
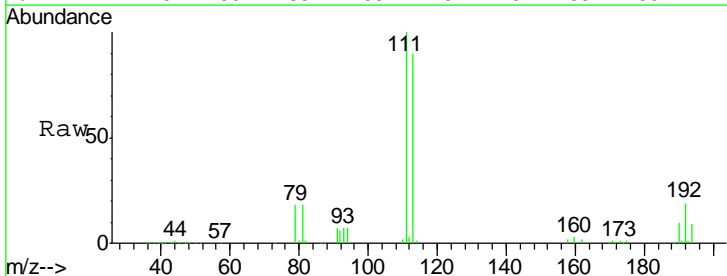
Instrument :  
 MSVOA\_X  
 ClientSampled :  
 2S-D2-(0)

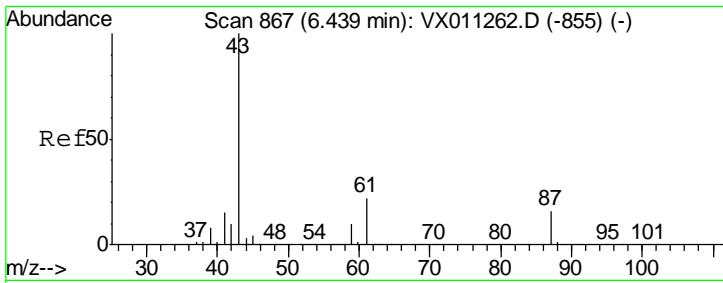
Tgt Ion	Resp	Lower	Upper
114	100		
63	18.1	0.0	34.0
88	14.7	0.0	26.4



#35  
 Dibromofluoromethane  
 Concen: 47.643 ug/l  
 RT: 5.49 min Scan# 712  
 Delta R.T. 0.00 min  
 Lab File: VX011510.D  
 Acq: 13 Aug 2019 02:23

Tgt Ion	Resp	Lower	Upper
113	100		
111	103.1	81.9	122.9
192	21.5	17.8	26.8

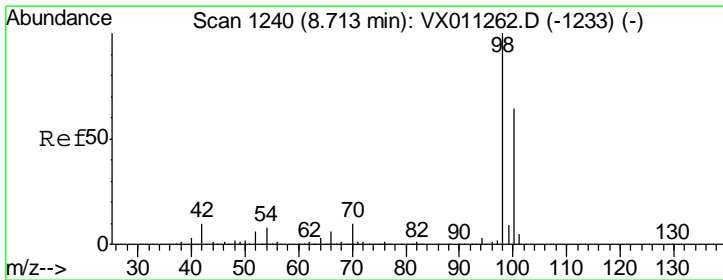
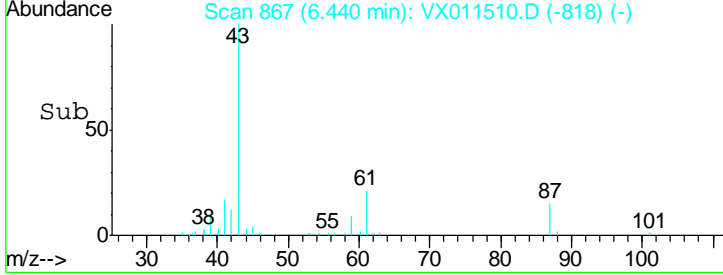
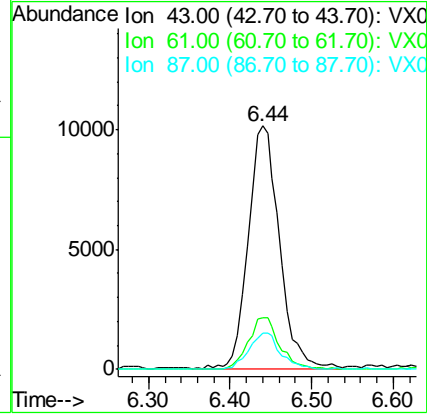
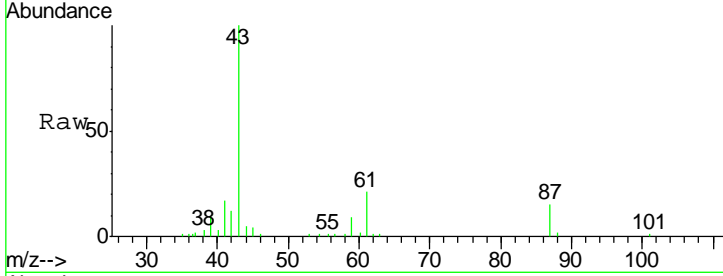




#43  
 Isopropyl Acetate  
 Concen: 7.123 ug/l  
 RT: 6.44 min Scan# 867  
 Delta R.T. 0.00 min  
 Lab File: VX011510.D  
 Acq: 13 Aug 2019 02:23

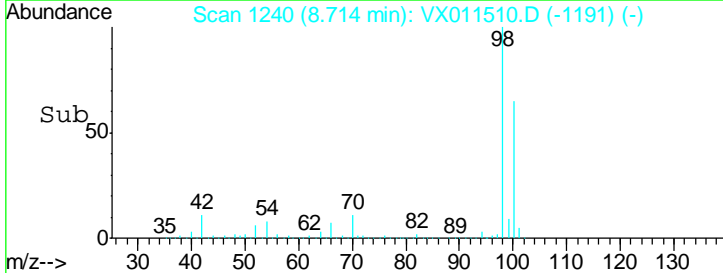
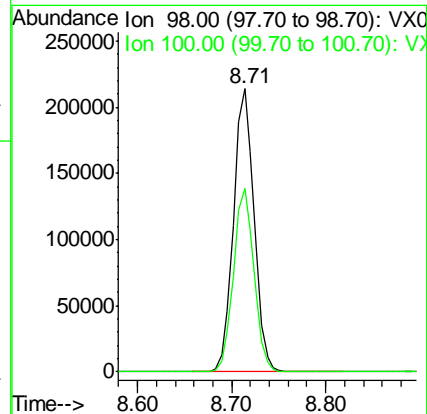
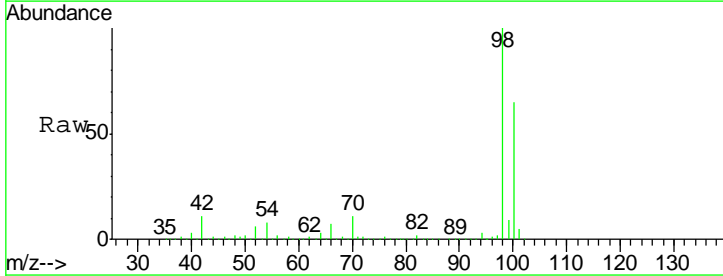
**Instrument :**  
 MSVOA\_X  
**ClientSampled :**  
 2S-D2-(0)

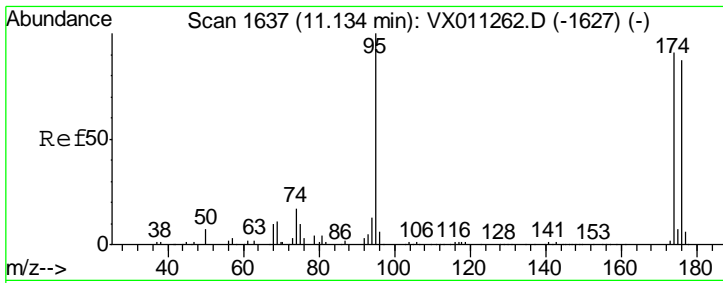
Tgt Ion	Resp	Lower	Upper
43	27169		
61	21.3	16.5	24.7
87	15.0	12.1	18.1



#50  
 Toluene-d8  
 Concen: 48.258 ug/l  
 RT: 8.71 min Scan# 1240  
 Delta R.T. 0.00 min  
 Lab File: VX011510.D  
 Acq: 13 Aug 2019 02:23

Tgt Ion	Resp	Lower	Upper
98	323975		
100	64.8	51.7	77.5

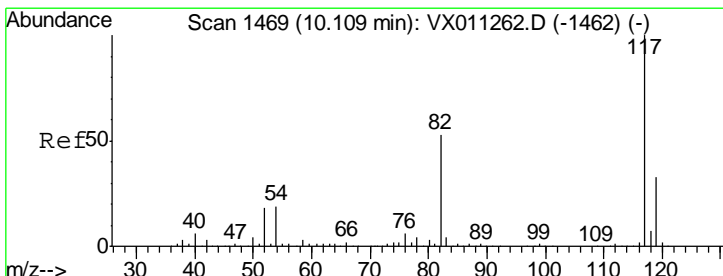
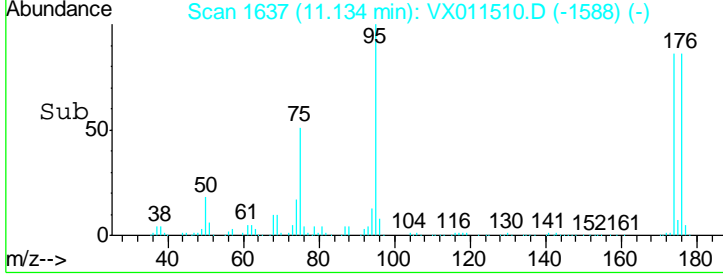
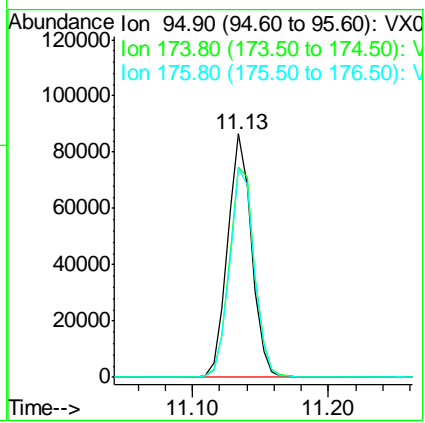
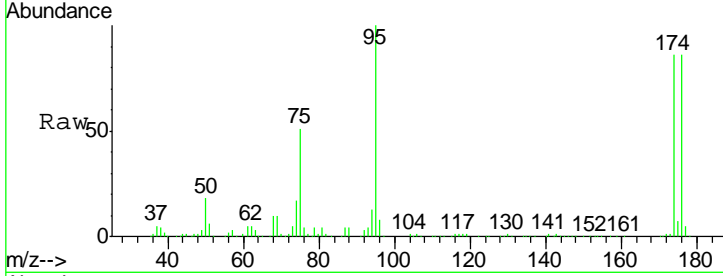




#62  
 4-Bromofluorobenzene  
 Concen: 44.152 ug/l  
 RT: 11.13 min Scan# 1637  
 Delta R.T. 0.00 min  
 Lab File: VX011510.D  
 Acq: 13 Aug 2019 02:23

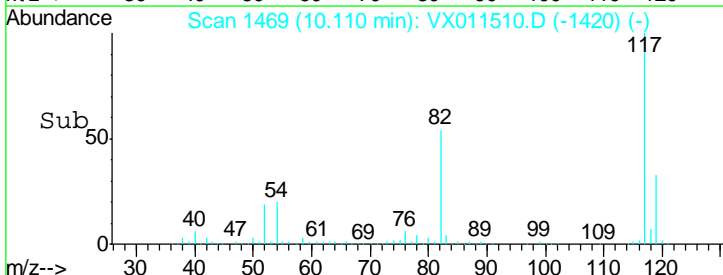
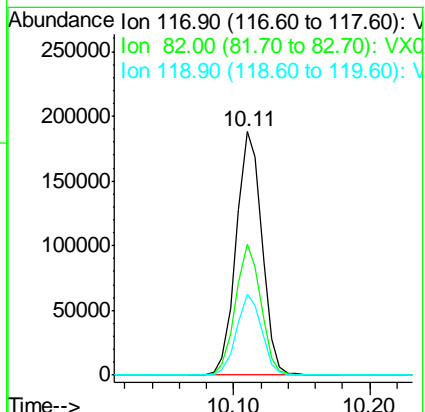
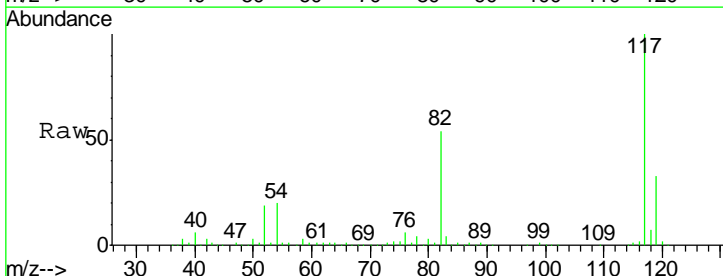
Instrument : MSVOA\_X  
 ClientSampled : 2S-D2-(0)

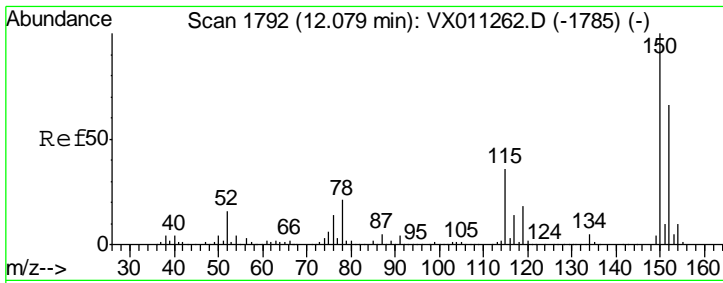
Tgt Ion	Resp	Lower	Upper
95	105826		
174	90.5	0.0	191.2
176	88.4	0.0	184.8



#63  
 Chlorobenzene-d5  
 Concen: 50.000 ug/l  
 RT: 10.11 min Scan# 1469  
 Delta R.T. 0.00 min  
 Lab File: VX011510.D  
 Acq: 13 Aug 2019 02:23

Tgt Ion	Resp	Lower	Upper
117	247796		
82	53.7	42.2	63.2
119	33.1	26.6	39.8





#72  
 1,4-Dichlorobenzene-d4  
 Concen: 50.000 ug/l  
 RT: 12.08 min Scan# 1792  
 Delta R.T. 0.00 min  
 Lab File: VX011510.D  
 Acq: 13 Aug 2019 02:23

Instrument : MSVOA\_X  
 ClientSampled : 2S-D2-(0)

Tot Ion	Resp	Lower	Upper
152	109681		
152	100		
115	55.6	40.0	119.9
150	154.1	0.0	350.4

