

Data Path : Z:\VOASRV\HPCHEM1\MSVOA X\DATA\VX081219\  
 Data File : VX011491.D  
 Acq On : 12 Aug 2019 18:13  
 Operator : JC/SP  
 Sample : K4278-05  
 Misc : 5.0mL/MSVOA X/WATER  
 ALS Vial : 21 Sample Multiplier: 1

Instrument :  
 MSVOA\_X  
 ClientSampled :  
 Z3-0691

Integration Parameters: RTEINT.P

Integrator: RTE  
 Smoothing : ON Filtering: 5  
 Sampling : 1 Min Area: 3 % of largest Peak  
 Start Thrs: 0.2 Max Peaks: 100  
 Stop Thrs : 0 Peak Location: TOP

If leading or trailing edge < 100 prefer < Baseline drop else tangent >  
 Peak separation: 5

Method : Z:\VOASRV\HPCHEM1\MSVOA\_X\METHOD\82X080119W.M  
 Title : SW846 8260

Signal : TIC

peak #	R.T. min	first scan	max scan	last scan	PK TY	peak height	corr. area	corr. % max.	% of total
1	1.270	15	19	26	rBV	25416	33427	4.00%	0.579%
2	1.398	37	40	45	rVB	20621	20776	2.49%	0.360%
3	1.593	65	72	75	rBV2	4661	8755	1.05%	0.152%
4	3.166	321	330	339	rBV3	8583	19916	2.39%	0.345%
5	4.592	554	564	575	rBV	78992	223142	26.73%	3.866%
6	5.495	701	712	723	rBV	101833	292431	35.02%	5.066%
7	5.659	727	739	755	rVB2	185298	521457	62.46%	9.034%
8	6.055	795	804	812	rBV	105942	276230	33.08%	4.786%
9	6.135	812	817	828	rVB	23308	61668	7.39%	1.068%
10	6.854	923	935	950	rBV	266095	623659	74.70%	10.805%
11	8.714	1232	1240	1248	rBV	553150	834925	100.00%	14.465%
12	10.110	1463	1469	1471	rBV	562456	788142	94.40%	13.655%
13	10.134	1471	1473	1485	rVV	673364	806604	96.61%	13.975%
14	11.134	1631	1637	1649	rBV	441857	555470	66.53%	9.624%
15	12.073	1786	1791	1802	rVB	525133	705360	84.48%	12.220%

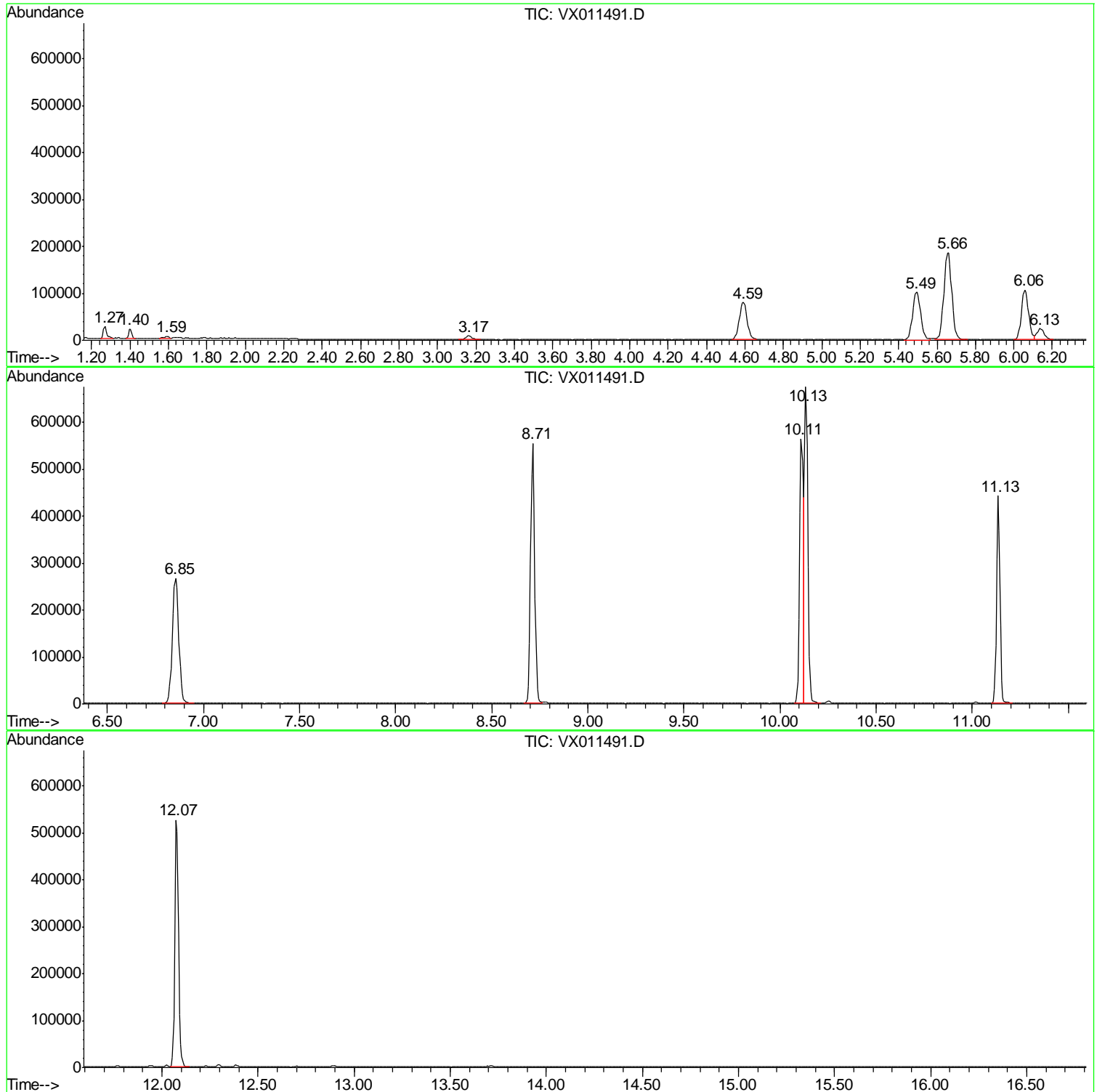
Sum of corrected areas: 5771962

Data Path : Z:\VOASRV\HPCHEM1\MSVOA X\DATA\VX081219\  
Data File : VX011491.D  
Acq On : 12 Aug 2019 18:13  
Operator : JC/SP  
Sample : K4278-05  
Misc : 5.0mL/MSVOA X/WATER  
ALS Vial : 21 Sample Multiplier: 1

Instrument :  
MSVOA\_X  
ClientSampled :  
Z3-0691

Quant Method : Z:\VOASRV\HPCHEM1\MSVOA\_X\METHOD\82X080119W.M  
Quant Title : SW846 8260

TIC Library : C:\DATABASE\NIST11.L  
TIC Integration Parameters: LSCINT.P



Data Path : Z:\VOASRV\HPCHEM1\MSVOA\_X\DATA\VX081219\  
Data File : VX011491.D  
Acq On : 12 Aug 2019 18:13  
Operator : JC/SP  
Sample : K4278-05  
Misc : 5.0mL/MSVOA\_X/WATER  
ALS Vial : 21 Sample Multiplier: 1

Instrument :  
MSVOA\_X  
ClientSampleId :  
Z3-0691

Quant Method : Z:\VOASRV\HPCHEM1\MSVOA\_X\METHOD\82X080119W.M  
Quant Title : SW846 8260

TIC Library : C:\DATABASE\NIST11.L  
TIC Integration Parameters: LSCINT.P

No Library Search Compounds Detected

\*\*\*\*\*

Data Path : Z:\VOASRV\HPCHEM1\MSVOA\_X\DATA\VX081219\  
Data File : VX011491.D  
Acq On : 12 Aug 2019 18:13  
Operator : JC/SP  
Sample : K4278-05  
Misc : 5.0mL/MSVOA\_X/WATER  
ALS Vial : 21 Sample Multiplier: 1

Instrument :  
MSVOA\_X  
ClientSampleId :  
Z3-0691

Quant Method : Z:\VOASRV\HPCHEM1\MSVOA\_X\METHOD\82X080119W.M  
Quant Title : SW846 8260

TIC Library : C:\DATABASE\NIST11.L  
TIC Integration Parameters: LSCINT.P

TIC Top Hit name	RT	EstConc	Units	Response	--Internal Standard--			
					#	RT	Resp	Conc

---