

Data Path : Z:\VOASRV\HPCHEM1\MSVOA X\DATA\VX081219\
 Data File : VX011518.D
 Acq On : 13 Aug 2019 05:30
 Operator : JC/SP
 Sample : K4278-18
 Misc : 5.0mL/MSVOA X/WATER
 ALS Vial : 50 Sample Multiplier: 1

Instrument :
 MSVOA_X
 ClientSampleId :
 Z3-0710

Integration Parameters: RTEINT.P
 Integrator: RTE
 Smoothing : ON Filtering: 5
 Sampling : 1 Min Area: 3 % of largest Peak
 Start Thrs: 0.2 Max Peaks: 100
 Stop Thrs : 0 Peak Location: TOP

If leading or trailing edge < 100 prefer < Baseline drop else tangent >
 Peak separation: 5

Method : Z:\VOASRV\HPCHEM1\MSVOA_X\METHOD\82X080119W.M
 Title : SW846 8260

Signal : TIC

peak #	R.T. min	first scan	max scan	last scan	PK TY	peak height	corr. area	corr. % max.	% of total
1	1.404	36	41	46	rVV	5664	8988	1.07%	0.196%
2	3.160	321	329	335	rBV3	5200	12127	1.44%	0.264%
3	4.592	557	564	573	rVB6	3148	9661	1.15%	0.210%
4	5.495	699	712	727	rBV	102657	296831	35.24%	6.465%
5	5.659	727	739	755	rVB	188948	526461	62.50%	11.466%
6	6.056	794	804	818	rBV	109114	285860	33.93%	6.226%
7	6.854	926	935	952	rBV	270603	631126	74.92%	13.746%
8	8.714	1231	1240	1250	rBV	552058	842391	100.00%	18.348%
9	10.110	1463	1469	1481	rBV	543124	730972	86.77%	15.921%
10	11.134	1631	1637	1649	rBV	443720	551817	65.51%	12.019%
11	12.073	1786	1791	1801	rBV	502008	662186	78.61%	14.423%
12	16.413	2495	2503	2510	rBV	17945	32890	3.90%	0.716%

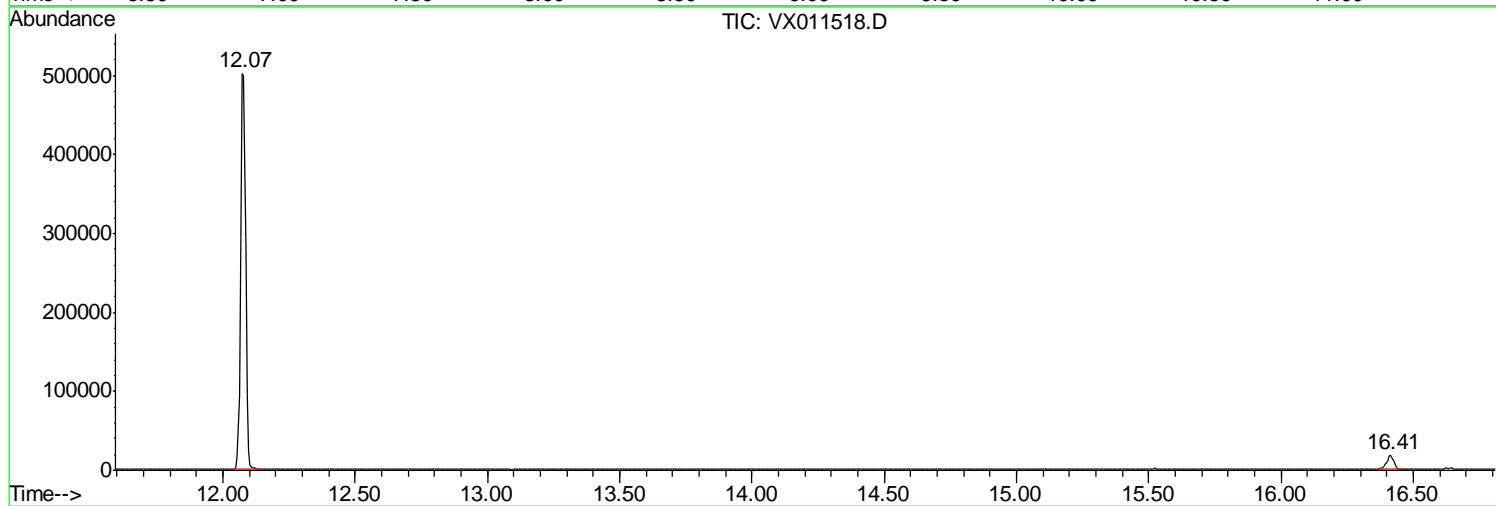
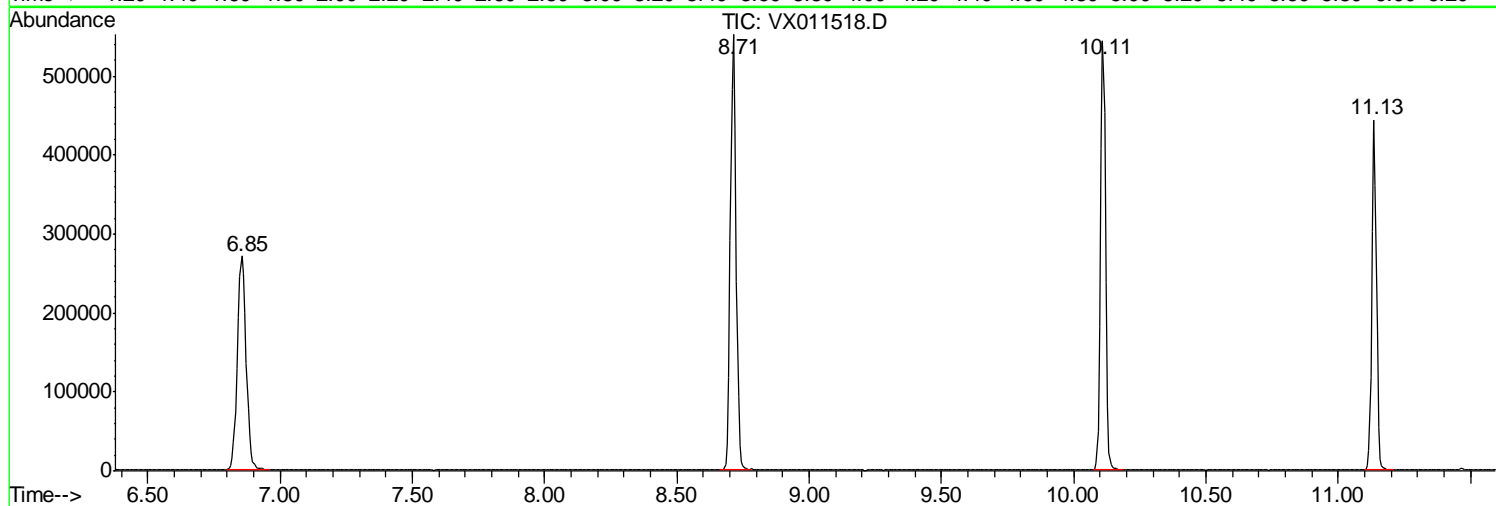
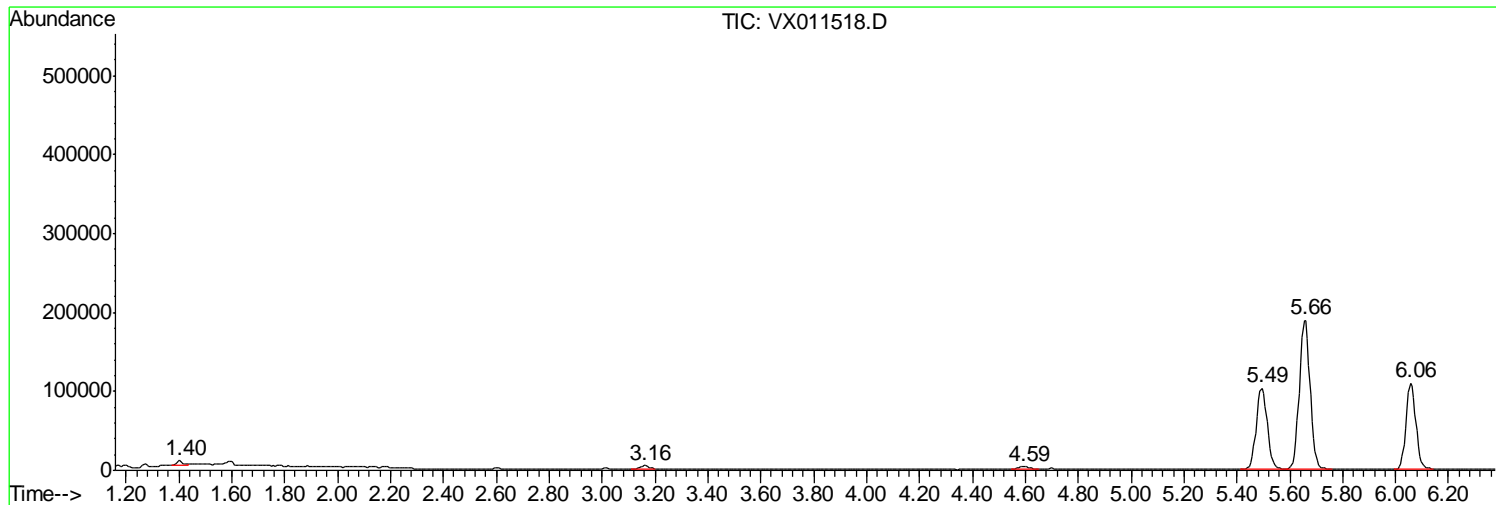
Sum of corrected areas: 4591310

Data Path : Z:\VOASRV\HPCHEM1\MSVOA X\DATA\VX081219\
Data File : VX011518.D
Acq On : 13 Aug 2019 05:30
Operator : JC/SP
Sample : K4278-18
Misc : 5.0mL/MSVOA X/WATER
ALS Vial : 50 Sample Multiplier: 1

Instrument :
MSVOA_X
ClientSampled :
Z3-0710

Quant Method : Z:\VOASRV\HPCHEM1\MSVOA_X\METHOD\82X080119W.M
Quant Title : SW846 8260

TIC Library : C:\DATABASE\NIST11.L
TIC Integration Parameters: LSCINT.P



Data Path : Z:\VOASRV\HPCHEM1\MSVOA_X\DATA\VX081219\
Data File : VX011518.D
Acq On : 13 Aug 2019 05:30
Operator : JC/SP
Sample : K4278-18
Misc : 5.0mL/MSVOA_X/WATER
ALS Vial : 50 Sample Multiplier: 1

Instrument :
MSVOA_X
ClientSampleId :
Z3-0710

Quant Method : Z:\VOASRV\HPCHEM1\MSVOA_X\METHOD\82X080119W.M
Quant Title : SW846 8260

TIC Library : C:\DATABASE\NIST11.L
TIC Integration Parameters: LSCINT.P

No Library Search Compounds Detected

Data Path : Z:\VOASRV\HPCHEM1\MSVOA_X\DATA\VX081219\
Data File : VX011518.D
Acq On : 13 Aug 2019 05:30
Operator : JC/SP
Sample : K4278-18
Misc : 5.0mL/MSVOA_X/WATER
ALS Vial : 50 Sample Multiplier: 1

Instrument :
MSVOA_X
ClientSampleId :
Z3-0710

Quant Method : Z:\VOASRV\HPCHEM1\MSVOA_X\METHOD\82X080119W.M
Quant Title : SW846 8260

TIC Library : C:\DATABASE\NIST11.L
TIC Integration Parameters: LSCINT.P

TIC Top Hit name	RT	EstConc	Units	Response	--Internal Standard--			
					#	RT	Resp	Conc
