

Data Path : Z:\voasrv\HPCHEM1\MSVOA_X\Data\VX081221\
 Data File : VX023663.D
 Acq On : 12 Aug 2021 10:22
 Operator : JC/MD
 Sample : VX0812MBL01
 Misc : 5.0g/5mL/100uL/5.00mL/MSVOA_X/MEOH
 ALS Vial : 3 Sample Multiplier: 1

Instrument :
 MSVOA_X
 ClientSampleId :
 VBLK606

Quant Time: Aug 13 01:01:24 2021
 Quant Method : Z:\voasrv\HPCHEM1\MSVOA_X\Method\SFAMXML081121WMA.M
 Quant Title : VOC Analysis
 QLast Update : Fri Aug 13 01:00:38 2021
 Response via : Initial Calibration

Compound	R.T.	QIon	Response	Conc	Units	Dev(Min)

Internal Standards						
1) 1,4-Difluorobenzene	6.769	114	322606	50.000	ug/L	0.00
28) Chlorobenzene-d5	10.055	117	286674	50.000	ug/L	0.00
58) 1,4-Dichlorobenzene-d4	12.024	152	119441	50.000	ug/L	0.00
System Monitoring Compounds						
4) Vinyl Chloride-d3	1.368	65	78637	46.765	ug/L	0.00
Spiked Amount	50.000	Range 60 - 135	Recovery =	93.540%		
7) Chloroethane-d5	1.666	69	66505	48.145	ug/L	0.00
Spiked Amount	50.000	Range 70 - 130	Recovery =	96.280%		
11) 1,1-Dichloroethene-d2	2.307	63	132657	36.319	ug/L	0.00
Spiked Amount	50.000	Range 60 - 125	Recovery =	72.640%		
21) 2-Butanone-d5	4.465	46	176356	108.785	ug/L	0.00
Spiked Amount	100.000	Range 40 - 130	Recovery =	108.790%		
24) Chloroform-d	5.068	84	180357	47.368	ug/L	0.00
Spiked Amount	50.000	Range 70 - 125	Recovery =	94.740%		
26) 1,2-Dichloroethane-d4	5.964	65	128963	49.410	ug/L	0.00
Spiked Amount	50.000	Range 70 - 125	Recovery =	98.820%		
32) Benzene-d6	5.983	84	376667	52.159	ug/L	0.00
Spiked Amount	50.000	Range 70 - 125	Recovery =	104.320%		
36) 1,2-Dichloropropane-d6	7.318	67	118775	52.273	ug/L	0.00
Spiked Amount	50.000	Range 70 - 120	Recovery =	104.540%		
41) Toluene-d8	8.653	98	344627	49.552	ug/L	0.00
Spiked Amount	50.000	Range 80 - 120	Recovery =	99.100%		
43) trans-1,3-Dichloroprop...	8.952	79	50921	47.356	ug/L	0.00
Spiked Amount	50.000	Range 60 - 125	Recovery =	94.720%		
47) 2-Hexanone-d5	9.391	63	118883	108.827	ug/L	0.00
Spiked Amount	100.000	Range 45 - 130	Recovery =	108.830%		
56) 1,1,2,2-Tetrachloroeth...	11.195	84	144161	47.627	ug/L	0.00
Spiked Amount	50.000	Range 65 - 120	Recovery =	95.260%		
66) 1,2-Dichlorobenzene-d4	12.323	152	109350	52.172	ug/L	0.00
Spiked Amount	50.000	Range 80 - 120	Recovery =	104.340%		

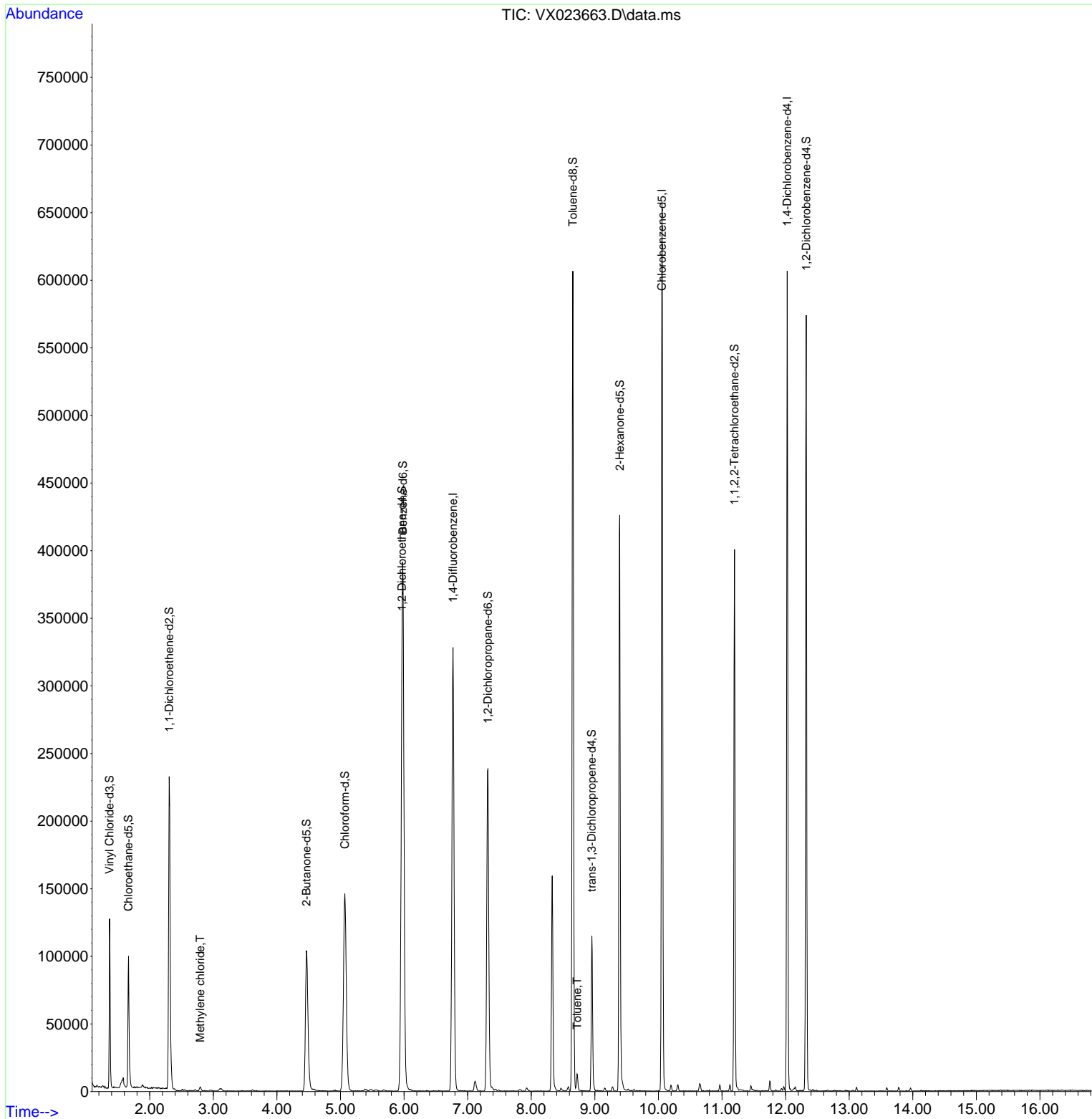
Target Compounds						Qvalue
16) Methylene chloride	2.794	84	1346	0.659	ug/L	85
42) Toluene	8.720	91	7289	0.878	ug/L	99

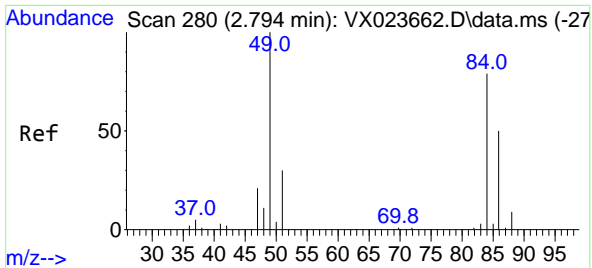
(#) = qualifier out of range (m) = manual integration (+) = signals summed

Data Path : Z:\voasrv\HPCHEM1\MSVOA_X\Data\VX081221\
 Data File : VX023663.D
 Acq On : 12 Aug 2021 10:22
 Operator : JC/MD
 Sample : VX0812MBL01
 Misc : 5.0g/5mL/100uL/5.00mL/MSVOA_X/MEOH
 ALS Vial : 3 Sample Multiplier: 1

Instrument :
 MSVOA_X
 ClientSampled :
 VBLK606

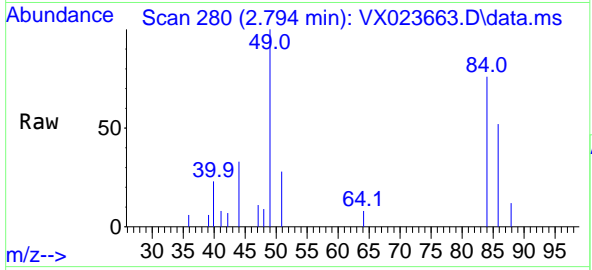
Quant Time: Aug 13 01:01:24 2021
 Quant Method : Z:\voasrv\HPCHEM1\MSVOA_X\Method\SFAMXML081121WMA.M
 Quant Title : VOC Analysis
 QLast Update : Fri Aug 13 01:00:38 2021
 Response via : Initial Calibration





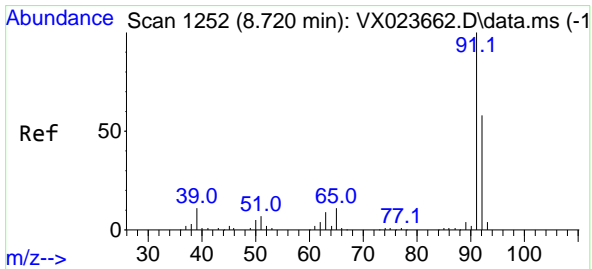
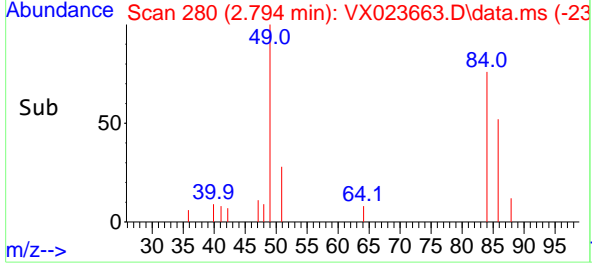
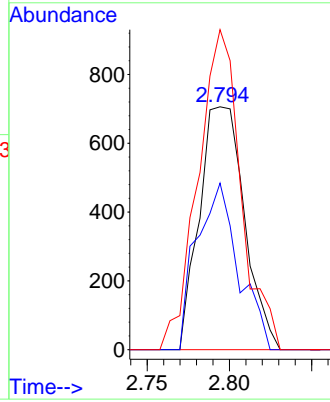
#16
 Methylene chloride
 Concen: 0.659 ug/L
 RT: 2.794 min Scan# 280
 Delta R.T. 0.000 min
 Lab File: VX023663.D
 Acq: 12 Aug 2021 10:22

Instrument :
 MSVOA_X
 ClientSampled :
 VBLK606



Tgt Ion: 84 Resp: 1346

Ion	Ratio	Lower	Upper
84	100		
86	68.6	44.2	82.0
49	131.7	77.8	144.6



#42
 Toluene
 Concen: 0.878 ug/L
 RT: 8.720 min Scan# 1252
 Delta R.T. 0.000 min
 Lab File: VX023663.D
 Acq: 12 Aug 2021 10:22

Tgt Ion: 91 Resp: 7289

Ion	Ratio	Lower	Upper
91	100		
92	57.1	40.5	75.1

