

Data Path : Z:\VOASRV\HPCHEM1\MSVOA X\DATA\VX081320\  
 Data File : VX017876.D  
 Acq On : 13 Aug 2020 15:34  
 Operator : JC/SP  
 Sample : L3643-11  
 Misc : 25.0mL/MSVOA X/WATER  
 ALS Vial : 12 Sample Multiplier: 1

Instrument :  
 MSVOA\_X  
 ClientSampleId :  
 BG0B7

Quant Time: Aug 14 08:16:20 2020  
 Quant Method : Z:\VOASRV\HPCHEM1\MSVOA\_X\METHOD\SOMXTR080720WMA.M  
 Quant Title : TRACE VOA SOM01.0  
 QLast Update : Fri Aug 14 07:35:30 2020  
 Response via : Initial Calibration

Internal Standards	R.T.	QIon	Response	Conc	Units	Dev(Min)
1) 1,4-Difluorobenzene	6.83	114	292586	5.00	ug/L	0.00
28) Chlorobenzene-d5	10.10	117	294764	5.00	ug/L	0.00
61) 1,4-Dichlorobenzene-d4	12.06	152	129644	5.00	ug/L	0.00

System Monitoring Compounds

4) Vinyl Chloride-d3	1.39	65	100762	4.98	ug/L	0.00
Spiked Amount	5.000	Range	40 - 130	Recovery	=	99.60%
7) Chloroethane-d5	1.70	69	77318	4.82	ug/L	0.00
Spiked Amount	5.000	Range	65 - 130	Recovery	=	96.40%
11) 1,1-Dichloroethene-d2	2.34	63	144689	3.48	ug/L	0.00
Spiked Amount	5.000	Range	60 - 125	Recovery	=	69.60%
20) 2-Butanone-d5	4.53	46	222281	41.40	ug/L	0.00
Spiked Amount	50.000	Range	40 - 130	Recovery	=	82.80%
24) Chloroform-d	5.14	84	170805	4.16	ug/L	0.00
Spiked Amount	5.000	Range	70 - 125	Recovery	=	83.20%
26) 1,2-Dichloroethane-d4	6.04	65	99195	4.40	ug/L	0.00
Spiked Amount	5.000	Range	70 - 130	Recovery	=	88.00%
32) Benzene-d6	6.05	84	343691	4.25	ug/L	0.00
Spiked Amount	5.000	Range	70 - 125	Recovery	=	85.00%
36) 1,2-Dichloropropane-d6	7.37	67	107805	4.31	ug/L	0.00
Spiked Amount	5.000	Range	60 - 140	Recovery	=	86.20%
41) Toluene-d8	8.70	98	308161	4.00	ug/L	0.00
Spiked Amount	5.000	Range	70 - 130	Recovery	=	80.00%
45) trans-1,3-Dichloropropene-	8.99	79	42500	3.92	ug/L	0.00
Spiked Amount	5.000	Range	55 - 130	Recovery	=	78.40%
48) 2-Hexanone-d5	9.43	63	175217	38.92	ug/L	0.00
Spiked Amount	50.000	Range	45 - 130	Recovery	=	77.84%
59) 1,1,2,2-Tetrachloroethane-	11.23	84	75416	3.97	ug/L	0.00
Spiked Amount	5.000	Range	65 - 120	Recovery	=	79.40%
65) 1,2-Dichlorobenzene-d4	12.36	152	117460	4.71	ug/L	0.00
Spiked Amount	5.000	Range	80 - 120	Recovery	=	94.20%

Target Compounds

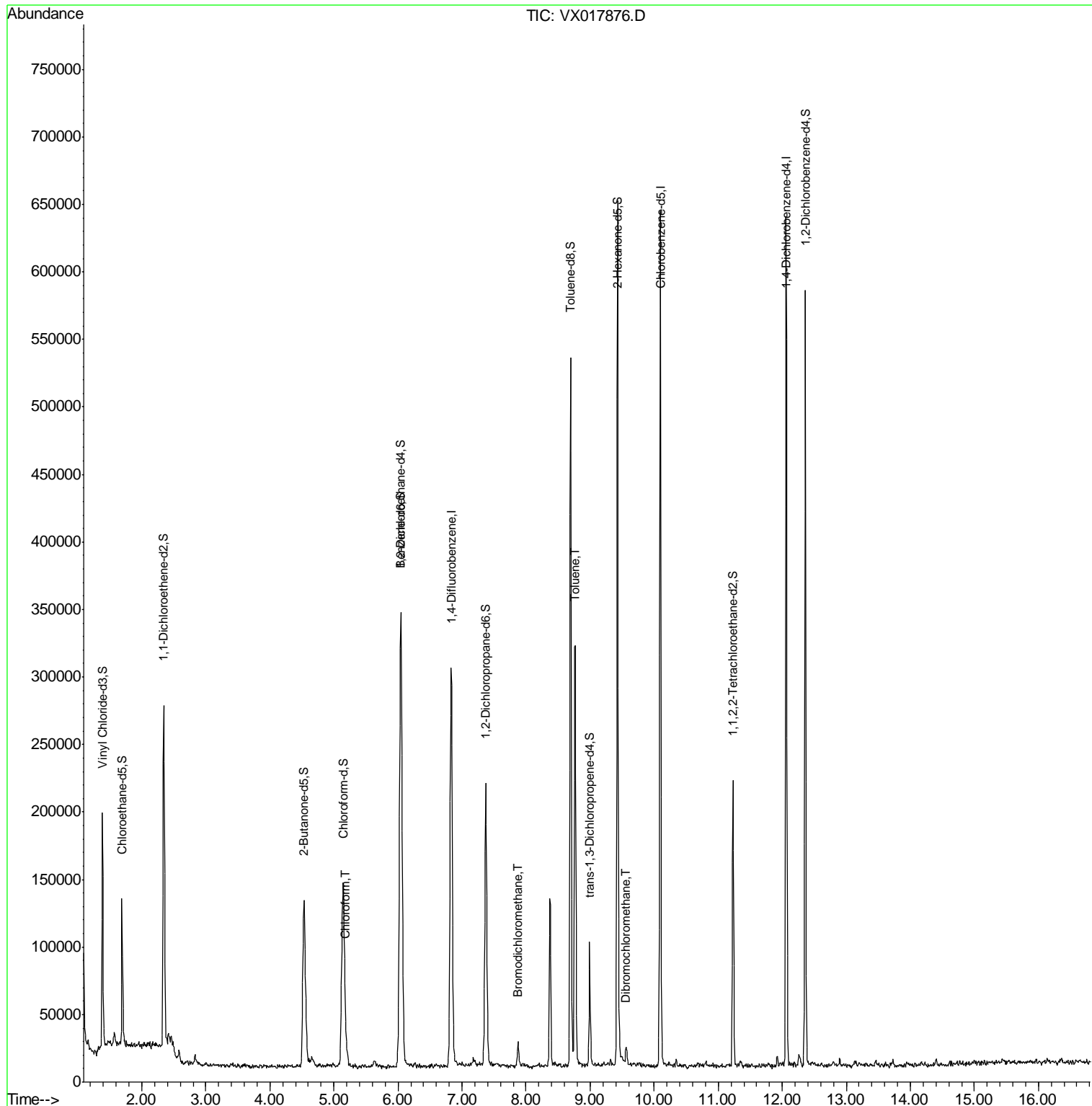
Target Compounds	R.T.	QIon	Response	Conc	Units	Ovalue
25) Chloroform	5.18	83	26916	0.551	ug/L	98
38) Bromodichloromethane	7.88	83	10639	0.291	ug/L	80
42) Toluene	8.76	91	204681	1.807	ug/L	98
51) Dibromochloromethane	9.56	129	3986	0.147	ug/L	97

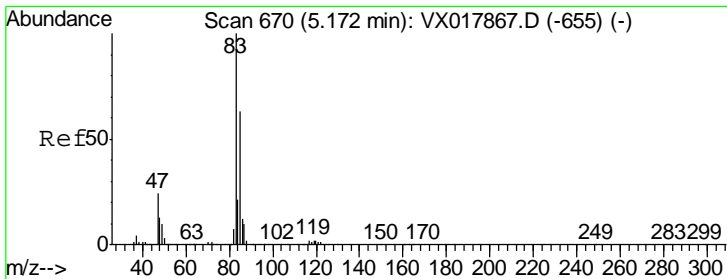
(#) = qualifier out of range (m) = manual integration (+) = signals summed

Data Path : Z:\VOASRV\HPCHEM1\MSVOA X\DATA\VX081320\  
 Data File : VX017876.D  
 Acq On : 13 Aug 2020 15:34  
 Operator : JC/SP  
 Sample : L3643-11  
 Misc : 25.0mL/MSVOA X/WATER  
 ALS Vial : 12 Sample Multiplier: 1

Instrument :  
 MSVOA\_X  
 Client Sampled :  
 BG0B7

Quant Time: Aug 14 08:16:20 2020  
 Quant Method : Z:\VOASRV\HPCHEM1\MSVOA\_X\METHOD\SOMXTR080720WMA.M  
 Quant Title : TRACE VOA SOM01.0  
 QLast Update : Fri Aug 14 07:35:30 2020  
 Response via : Initial Calibration

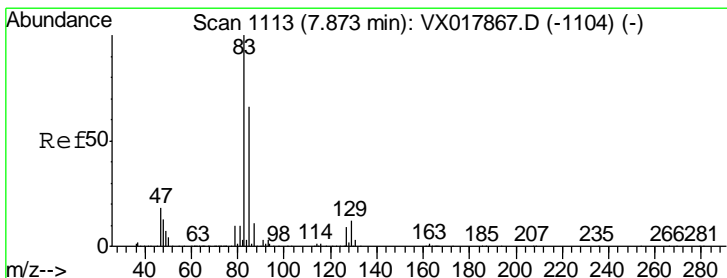
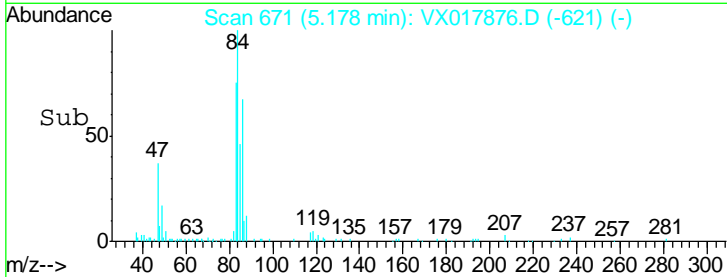
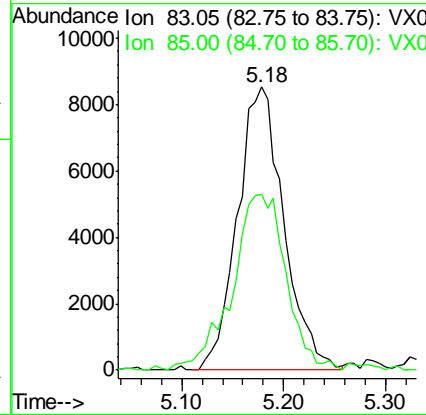
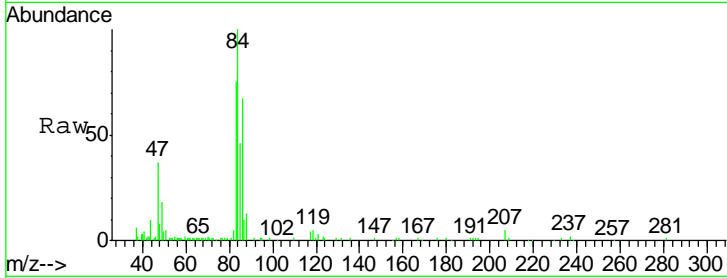




#25  
 Chloroform  
 Concen: 0.551 ug/L  
 RT: 5.18 min Scan# 671  
 Delta R.T. 0.01 min  
 Lab File: VX017876.D  
 Acq: 13 Aug 2020 15:34

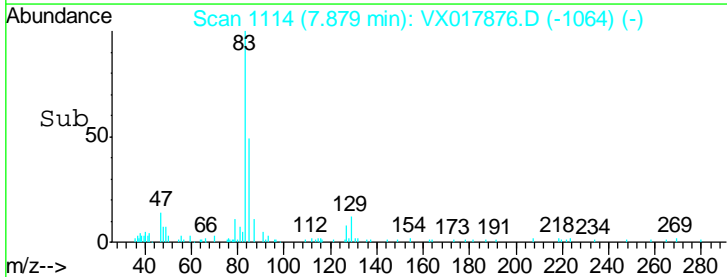
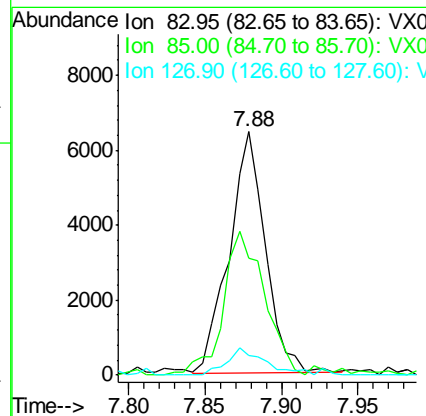
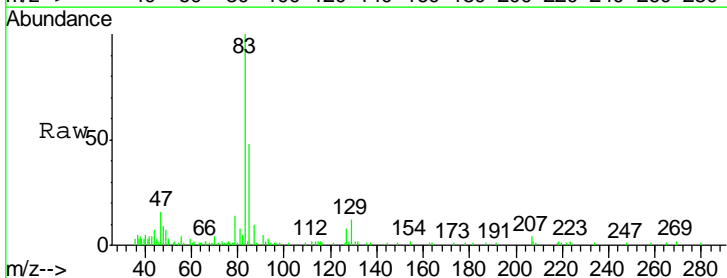
**Instrument :**  
 MSVOA\_X  
**Client Sampled :**  
 BG0B7

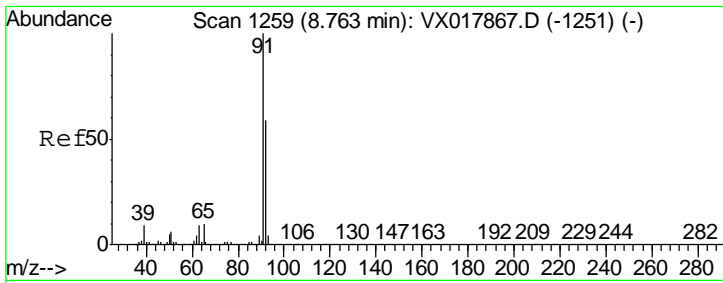
Tgt Ion	Resp	Lower	Upper
83	26916		
85	61.9	44.7	83.1



#38  
 Bromodichloromethane  
 Concen: 0.291 ug/L  
 RT: 7.88 min Scan# 1114  
 Delta R.T. 0.01 min  
 Lab File: VX017876.D  
 Acq: 13 Aug 2020 15:34

Tgt Ion	Resp	Lower	Upper
83	10639		
85	48.1	45.9	85.3
127	8.3	7.9	11.9

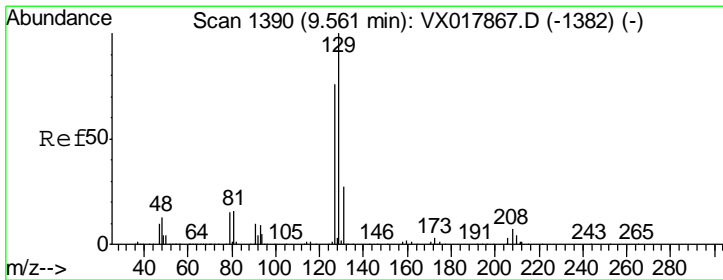
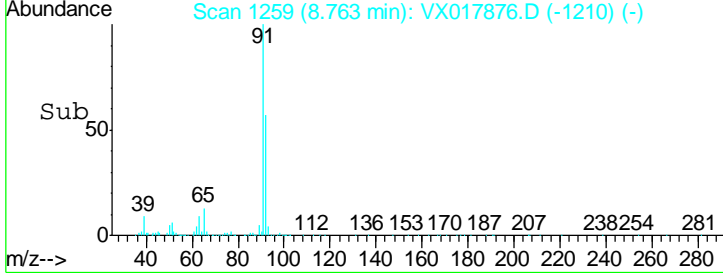
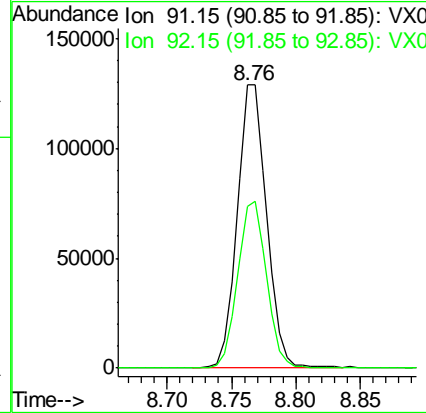
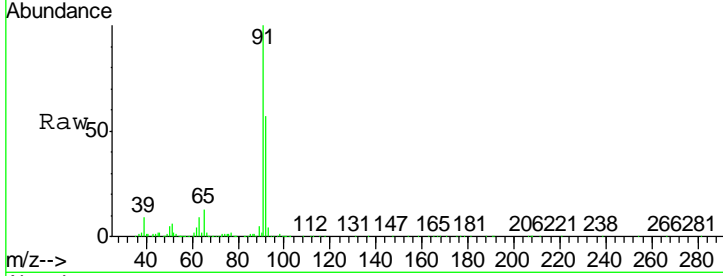




#42  
 Toluene  
 Concen: 1.807 ug/L  
 RT: 8.76 min Scan# 1259  
 Delta R.T. -0.00 min  
 Lab File: VX017876.D  
 Acq: 13 Aug 2020 15:34

Instrument :  
 MSVOA\_X  
 ClientSampled :  
 BG0B7

Tgt Ion	Resp	Lower	Upper
91	100		
92	57.0	38.8	72.0



#51  
 Dibromochloromethane  
 Concen: 0.147 ug/L  
 RT: 9.56 min Scan# 1390  
 Delta R.T. -0.00 min  
 Lab File: VX017876.D  
 Acq: 13 Aug 2020 15:34

Tgt Ion	Resp	Lower	Upper
129	100		
127	72.4	52.5	97.5

