

Data Path : Z:\VOASRV\HPCHEM1\MSVOA X\DATA\VX081418\  
 Data File : VX004047.D  
 Acq On : 15 Aug 2018 00:22  
 Operator : JC/MD  
 Sample : VX0814WBL02  
 Misc : 5.0mL/MSVOA X/WATER  
 ALS Vial : 31 Sample Multiplier: 1

Instrument :  
 MSVOA\_X  
 ClientSampleId :  
 VX0814WBL02

Integration Parameters: RTEINT.P  
 Integrator: RTE  
 Smoothing : ON Filtering: 5  
 Sampling : 1 Min Area: 3 % of largest Peak  
 Start Thrs: 0.2 Max Peaks: 100  
 Stop Thrs : 0 Peak Location: TOP

If leading or trailing edge < 100 prefer < Baseline drop else tangent >  
 Peak separation: 5

Method : Z:\VOASRV\HPCHEM1\MSVOA\_X\METHOD\82X081418W.M  
 Title : SW846 8260

Signal : TIC

peak #	R.T. min	first scan	max scan	last scan	PK TY	peak height	corr. area	corr. % max.	% of total
1	1.075	72	80	94	rBV	847324	1140317	67.47%	11.943%
2	4.733	669	680	690	rBV2	8060	26829	1.59%	0.281%
3	5.507	795	807	821	rBV	204181	577797	34.19%	6.051%
4	5.666	822	833	852	rVB	282164	791833	46.85%	8.293%
5	6.074	887	900	911	rBV	224511	588628	34.83%	6.165%
6	6.867	1017	1030	1041	rBV	441752	1035216	61.25%	10.842%
7	8.720	1326	1334	1355	rBV	1075243	1690070	100.00%	17.700%
8	10.116	1556	1563	1577	rBV	901958	1224974	72.48%	12.829%
9	11.140	1725	1731	1745	rBV	910343	1109286	65.64%	11.618%
10	12.079	1879	1885	1894	rBV	1160947	1363255	80.66%	14.278%

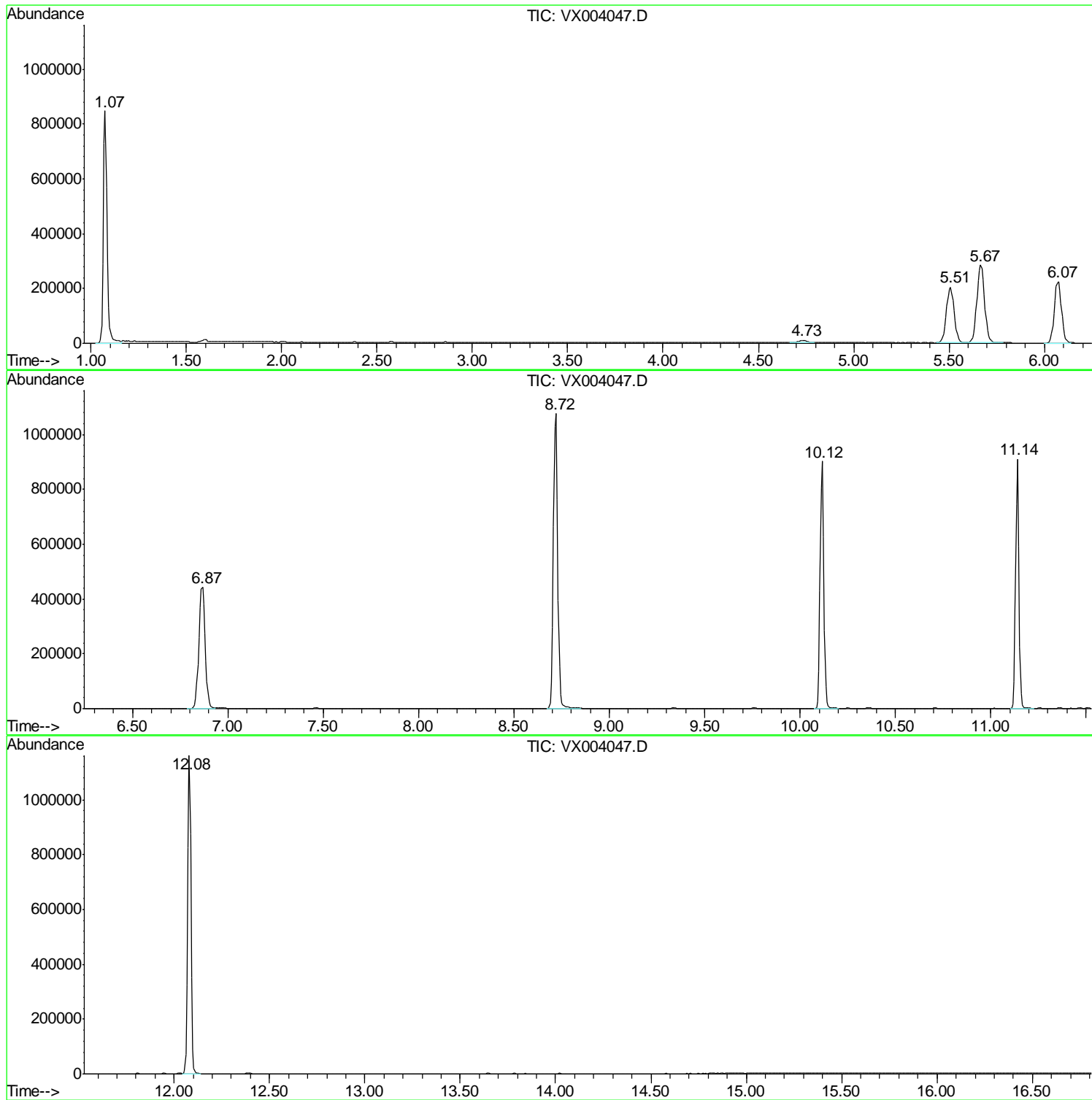
Sum of corrected areas: 9548205

Data Path : Z:\VOASRV\HPCHEM1\MSVOA X\DATA\VX081418\  
Data File : VX004047.D  
Acq On : 15 Aug 2018 00:22  
Operator : JC/MD  
Sample : VX0814WBL02  
Misc : 5.0mL/MSVOA X/WATER  
ALS Vial : 31 Sample Multiplier: 1

Instrument :  
MSVOA\_X  
ClientSampled :  
VX0814WBL02

Quant Method : Z:\VOASRV\HPCHEM1\MSVOA\_X\METHOD\82X081418W.M  
Quant Title : SW846 8260

TIC Library : C:\DATABASE\NIST11.L  
TIC Integration Parameters: LSCINT.P



Data Path : Z:\VOASRV\HPCHEM1\MSVOA\_X\DATA\VX081418\  
Data File : VX004047.D  
Acq On : 15 Aug 2018 00:22  
Operator : JC/MD  
Sample : VX0814WBL02  
Misc : 5.0mL/MSVOA\_X/WATER  
ALS Vial : 31 Sample Multiplier: 1

Instrument :  
MSVOA\_X  
ClientSampleId :  
VX0814WBL02

Quant Method : Z:\VOASRV\HPCHEM1\MSVOA\_X\METHOD\82X081418W.M  
Quant Title : SW846 8260

TIC Library : C:\DATABASE\NIST11.L  
TIC Integration Parameters: LSCINT.P

No Library Search Compounds Detected

\*\*\*\*\*

Data Path : Z:\VOASRV\HPCHEM1\MSVOA\_X\DATA\VX081418\  
Data File : VX004047.D  
Acq On : 15 Aug 2018 00:22  
Operator : JC/MD  
Sample : VX0814WBL02  
Misc : 5.0mL/MSVOA\_X/WATER  
ALS Vial : 31 Sample Multiplier: 1

Instrument :  
MSVOA\_X  
ClientSampleId :  
VX0814WBL02

Quant Method : Z:\VOASRV\HPCHEM1\MSVOA\_X\METHOD\82X081418W.M  
Quant Title : SW846 8260

TIC Library : C:\DATABASE\NIST11.L  
TIC Integration Parameters: LSCINT.P

TIC Top Hit name	RT	EstConc	Units	Response	--Internal Standard--			
					#	RT	Resp	Conc

---