

Data Path : Z:\VOASRV\HPCHEM1\MSVOA X\DATA\VX081420\
 Data File : VX017899.D
 Acq On : 14 Aug 2020 14:53
 Operator : JC/SP
 Sample : L3697-04
 Misc : 25.0mL/MSVOA X/WATER
 ALS Vial : 14 Sample Multiplier: 1

Instrument :
 MSVOA_X
 ClientSampled :
 BG0N1

Quant Time: Aug 19 03:31:48 2020
 Quant Method : Z:\VOASRV\HPCHEM1\MSVOA_X\METHOD\SOMXTR080720WMA.M
 Quant Title : TRACE VOA SOM01.0
 QLast Update : Mon Aug 17 04:16:10 2020
 Response via : Initial Calibration

Internal Standards	R.T.	QIon	Response	Conc	Units	Dev(Min)
1) 1,4-Difluorobenzene	6.83	114	305958	5.00	ug/L	0.00
28) Chlorobenzene-d5	10.10	117	283078	5.00	ug/L	0.00
61) 1,4-Dichlorobenzene-d4	12.07	152	148383	5.00	ug/L	0.00

System Monitoring Compounds

4) Vinyl Chloride-d3	1.39	65	99588	4.71	ug/L	0.00
Spiked Amount	5.000	Range	40 - 130	Recovery	=	94.20%
7) Chloroethane-d5	1.69	69	79865	4.76	ug/L	0.00
Spiked Amount	5.000	Range	65 - 130	Recovery	=	95.20%
11) 1,1-Dichloroethene-d2	2.34	63	147794	3.39	ug/L	0.00
Spiked Amount	5.000	Range	60 - 125	Recovery	=	67.80%
20) 2-Butanone-d5	4.53	46	278806	49.66	ug/L	0.00
Spiked Amount	50.000	Range	40 - 130	Recovery	=	99.32%
24) Chloroform-d	5.15	84	200784	4.68	ug/L	0.00
Spiked Amount	5.000	Range	70 - 125	Recovery	=	93.60%
26) 1,2-Dichloroethane-d4	6.04	65	110293	4.68	ug/L	0.00
Spiked Amount	5.000	Range	70 - 130	Recovery	=	93.60%
32) Benzene-d6	6.06	84	375207	4.83	ug/L	0.00
Spiked Amount	5.000	Range	70 - 125	Recovery	=	96.60%
36) 1,2-Dichloropropane-d6	7.37	67	122512	5.10	ug/L	0.00
Spiked Amount	5.000	Range	60 - 140	Recovery	=	102.00%
41) Toluene-d8	8.70	98	341952	4.62	ug/L	0.00
Spiked Amount	5.000	Range	70 - 130	Recovery	=	92.40%
45) trans-1,3-Dichloropropene-	8.99	79	46275	4.45	ug/L	0.00
Spiked Amount	5.000	Range	55 - 130	Recovery	=	89.00%
48) 2-Hexanone-d5	9.43	63	219355	50.73	ug/L	0.00
Spiked Amount	50.000	Range	45 - 130	Recovery	=	101.46%
59) 1,1,2,2-Tetrachloroethane-	11.23	84	87459	4.79	ug/L	0.00
Spiked Amount	5.000	Range	65 - 120	Recovery	=	95.80%
65) 1,2-Dichlorobenzene-d4	12.36	152	144509	5.06	ug/L	0.00
Spiked Amount	5.000	Range	80 - 120	Recovery	=	101.20%

Target Compounds

Target Compounds	R.T.	QIon	Response	Conc	Units	Ovalue
5) Vinyl chloride	1.39	62	61314	2.128	ug/L	100
8) Chloroethane	1.71	64	172407	10.696	ug/L	95
13) Acetone	2.42	43	74467	18.153	ug/L	98
17) Methyl tert-butyl Ether	3.17	73	22177	0.353	ug/L #	1
18) trans-1,2-Dichloroethene	3.14	96	4034	0.152	ug/L	90
19) 1,1-Dichloroethane	3.67	63	38870	0.819	ug/L	95
21) 2-Butanone	4.64	43	23210	3.276	ug/L	93
22) cis-1,2-Dichloroethene	4.57	96	345910	12.388	ug/L #	96
25) Chloroform	5.18	83	11727	0.229	ug/L	94
30) Cyclohexane	5.54	56	29584	0.734	ug/L	99
33) Benzene	6.12	78	22682924	226.341	ug/L	100
35) Methylcyclohexane	7.44	83	25855	0.629	ug/L	99
40) 4-Methyl-2-pentanone	8.62	43	44300	2.700	ug/L	99
42) Toluene	8.76	91	20205016	185.726	ug/L #	63
53) Chlorobenzene	10.12	112	3827453	54.052	ug/L	99
54) Ethylbenzene	10.24	91	5687681	47.907	ug/L	99
55) m,p-xylene	10.35	106	5846859	128.979	ug/L	89

Data Path : Z:\VOASRV\HPCHEM1\MSVOA X\DATA\VX081420\
 Data File : VX017899.D
 Acq On : 14 Aug 2020 14:53
 Operator : JC/SP
 Sample : L3697-04
 Misc : 25.0mL/MSVOA X/WATER
 ALS Vial : 14 Sample Multiplier: 1

Instrument :
 MSVOA_X
 ClientSampleId :
 BG0N1

Quant Time: Aug 19 03:31:48 2020
 Quant Method : Z:\VOASRV\HPCHEM1\MSVOA_X\METHOD\SOMXTR080720WMA.M
 Quant Title : TRACE VOA SOM01.0
 QLast Update : Mon Aug 17 04:16:10 2020
 Response via : Initial Calibration

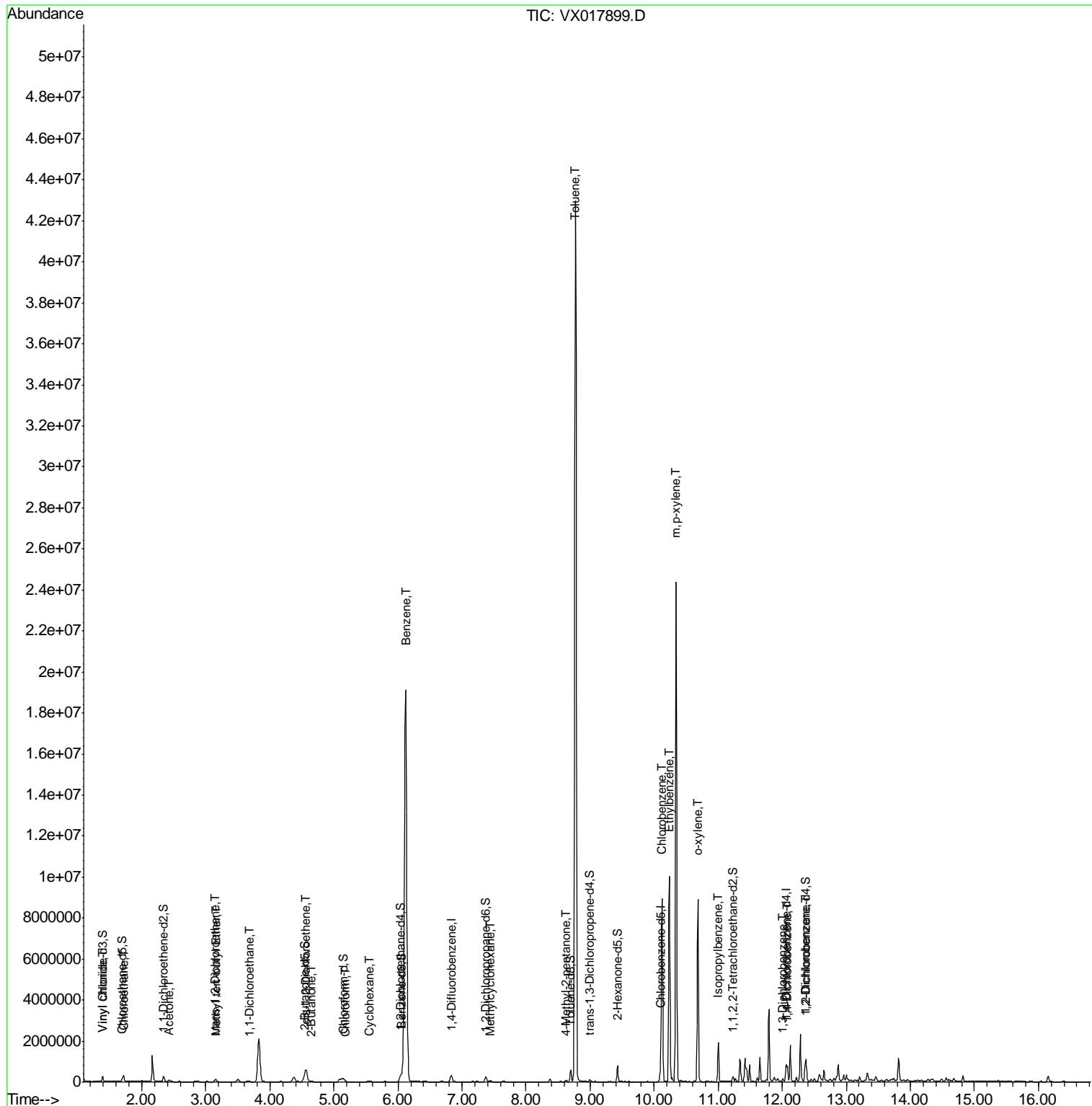
Internal Standards	R.T.	QIon	Response	Conc	Units	Dev(Min)
56) o-xylene	10.68	106	1849862	42.088	ug/L	98
58) Isopropylbenzene	11.01	105	1010564	8.590	ug/L	100
63) 1,3-Dichlorobenzene	12.01	146	34718	0.601	ug/L	94
64) 1,4-Dichlorobenzene	12.08	146	209024	3.636	ug/L	99
66) 1,2-Dichlorobenzene	12.38	146	234256	4.364	ug/L	98

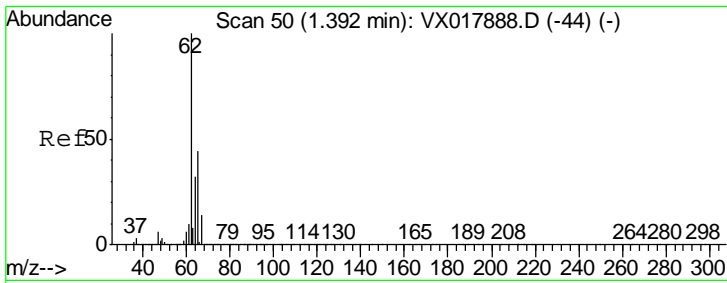
(#) = qualifier out of range (m) = manual integration (+) = signals summed

Data Path : Z:\VOASRV\HPCHEM1\MSVOA X\DATA\VX081420\
 Data File : VX017899.D
 Acq On : 14 Aug 2020 14:53
 Operator : JC/SP
 Sample : L3697-04
 Misc : 25.0mL/MSVOA X/WATER
 ALS Vial : 14 Sample Multiplier: 1

Instrument :
 MSVOA_X
 Client Sampled :
 BG0N1

Quant Time: Aug 19 03:31:48 2020
 Quant Method : Z:\VOASRV\HPCHEM1\MSVOA_X\METHOD\SOMXTR080720WMA.M
 Quant Title : TRACE VOA SOM01.0
 QLast Update : Mon Aug 17 04:16:10 2020
 Response via : Initial Calibration

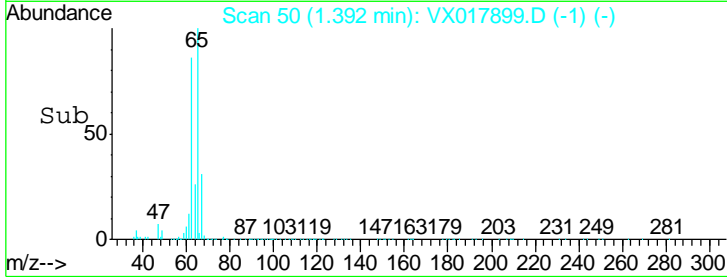
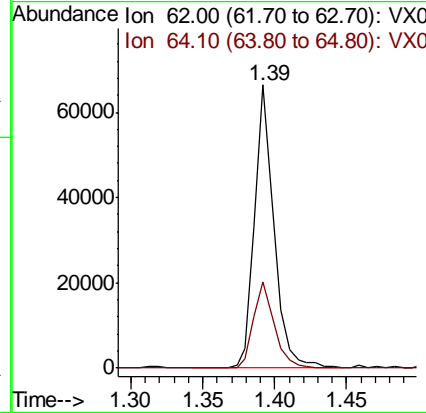
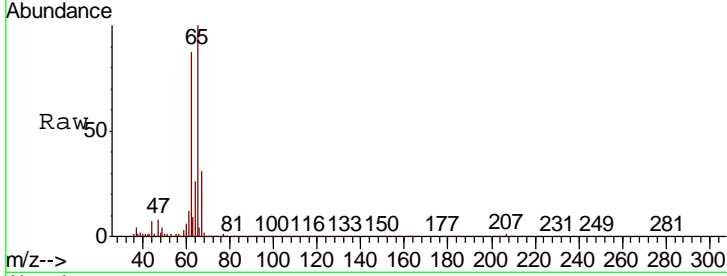




#5
 Vinyl chloride
 Concen: 2.128 ug/L
 RT: 1.39 min Scan# 50
 Delta R.T. -0.00 min
 Lab File: VX017899.D
 Acq: 14 Aug 2020 14:53

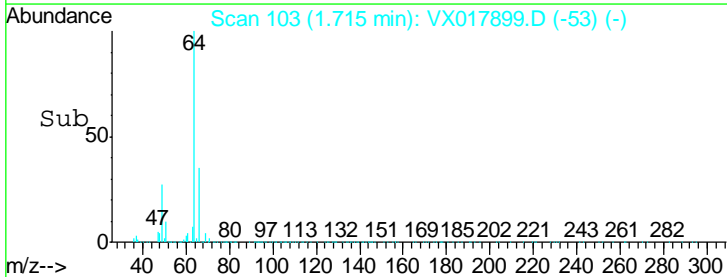
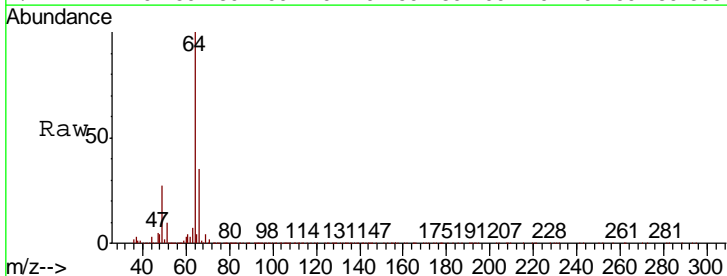
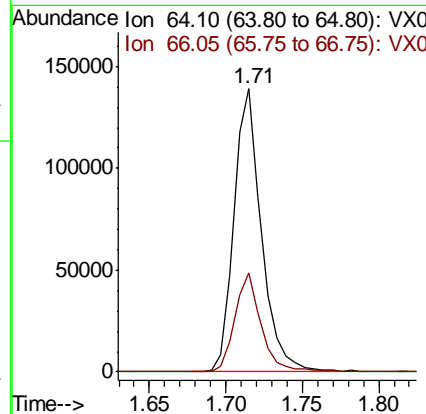
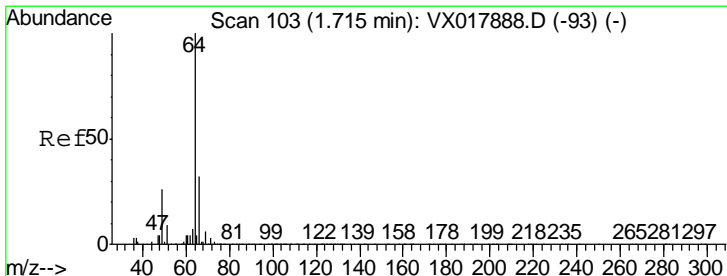
Instrument :
 MSVOA_X
ClientSampled :
 BG0N1

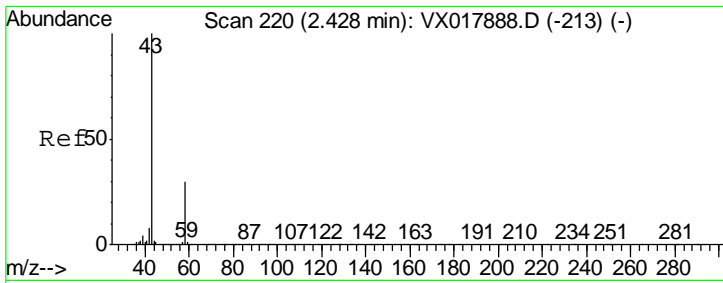
Tgt Ion	Resp	Lower	Upper
62	61314		
64	30.4	21.3	39.6



#8
 Chloroethane
 Concen: 10.696 ug/L
 RT: 1.71 min Scan# 103
 Delta R.T. 0.01 min
 Lab File: VX017899.D
 Acq: 14 Aug 2020 14:53

Tgt Ion	Resp	Lower	Upper
64	172407		
66	35.2	22.6	42.0

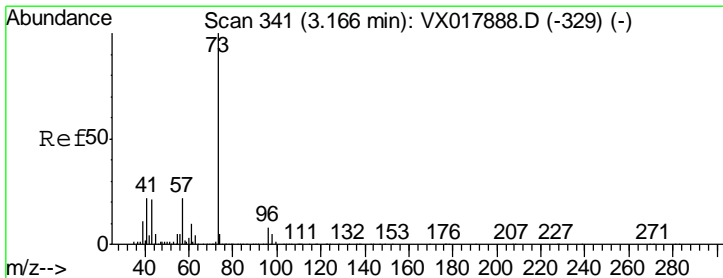
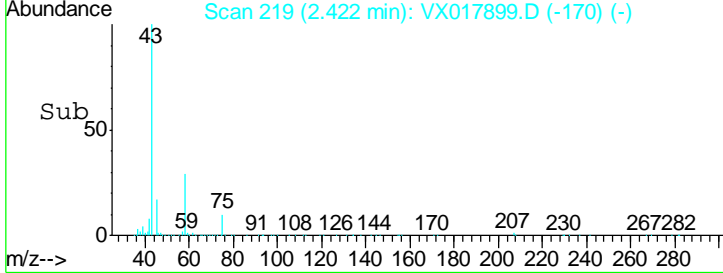
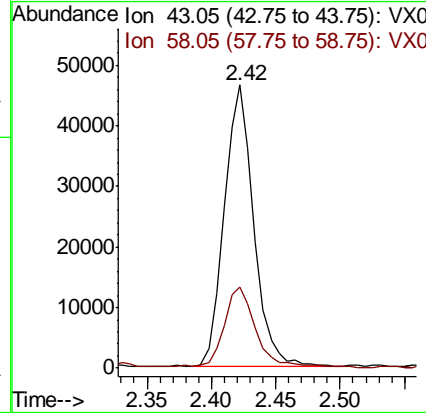
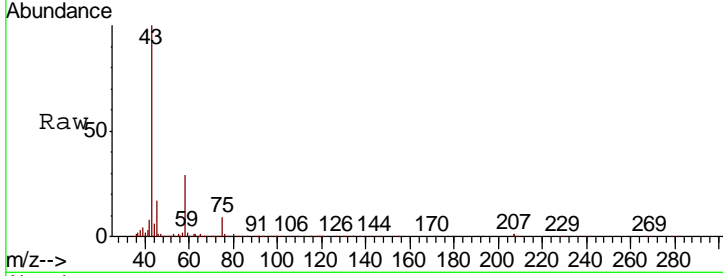




#13
 Acetone
 Concen: 18.153 ug/L
 RT: 2.42 min Scan# 219
 Delta R.T. -0.00 min
 Lab File: VX017899.D
 Acq: 14 Aug 2020 14:53

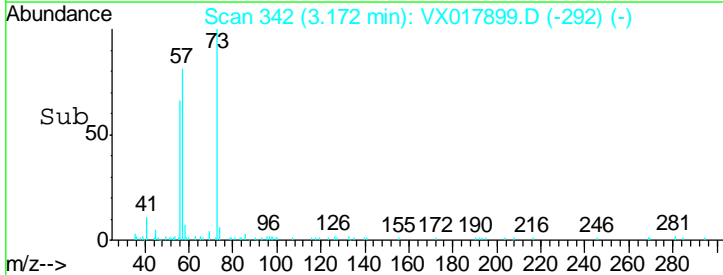
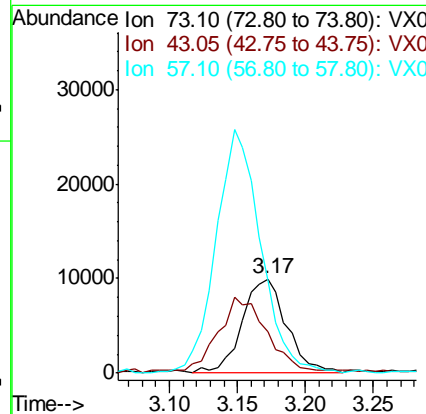
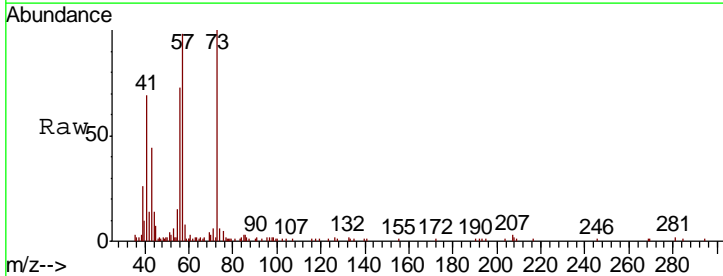
Instrument :
 MSVOA_X
 ClientSampled :
 BG0N1

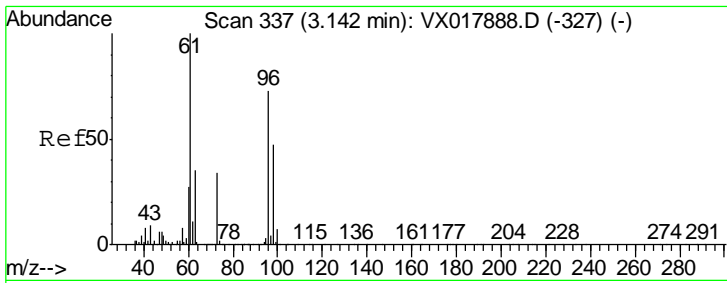
Tgt Ion	Resp	Lower	Upper
43	100		
58	31.4	0.0	60.8



#17
 Methyl tert-butyl Ether
 Concen: 0.353 ug/L
 RT: 3.17 min Scan# 342
 Delta R.T. 0.01 min
 Lab File: VX017899.D
 Acq: 14 Aug 2020 14:53

Tgt Ion	Resp	Lower	Upper
73	100		
43	89.0	17.7	26.5#
57	266.5	17.0	25.6#

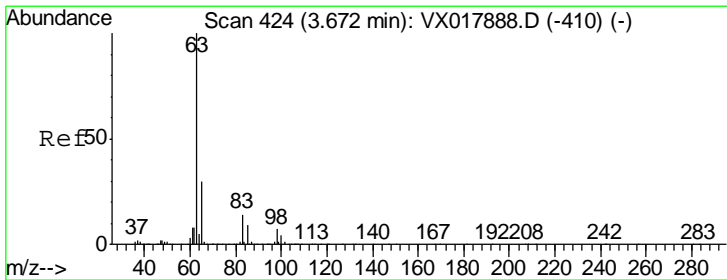
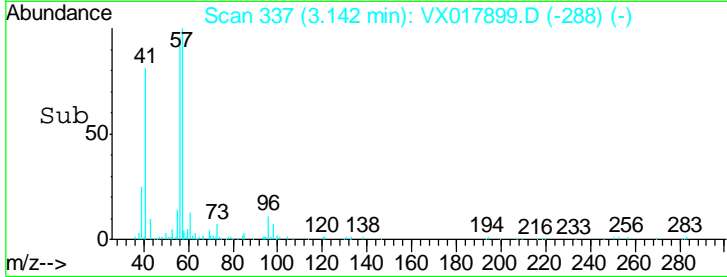
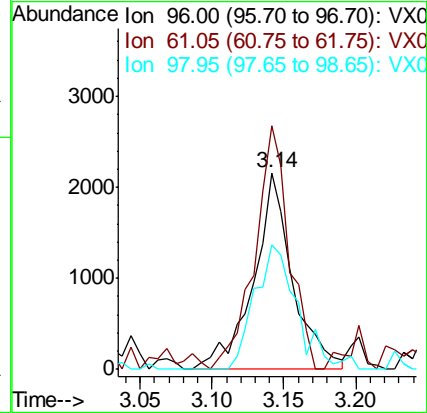
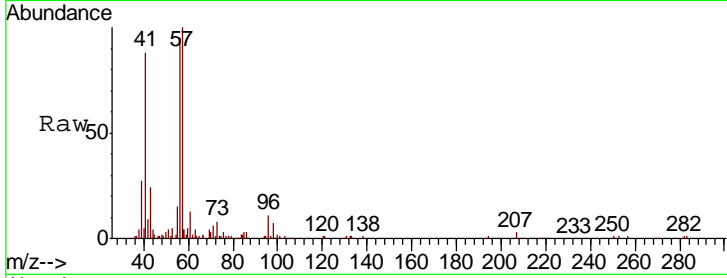




#18
 trans-1,2-Dichloroethene
 Concen: 0.152 ug/L
 RT: 3.14 min Scan# 337
 Delta R.T. -0.00 min
 Lab File: VX017899.D
 Acq: 14 Aug 2020 14:53

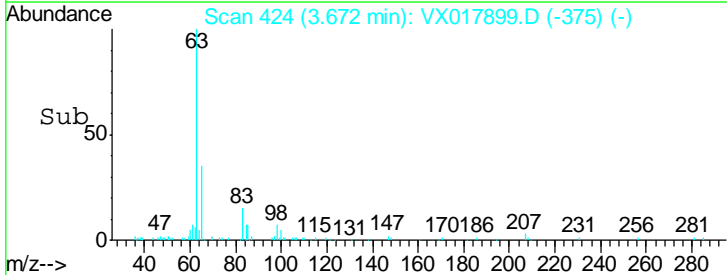
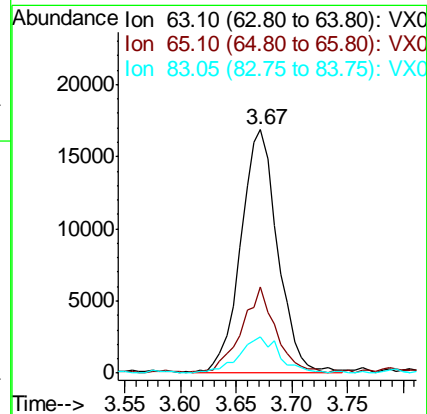
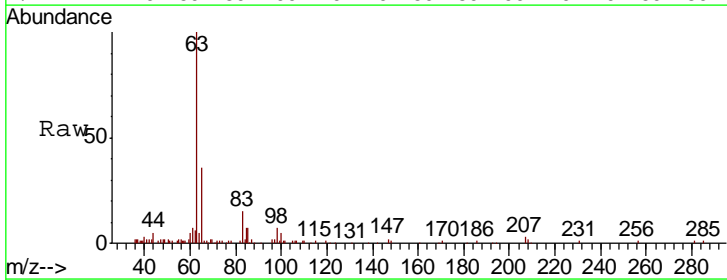
Instrument :
 MSVOA_X
 ClientSampleID :
 BG0N1

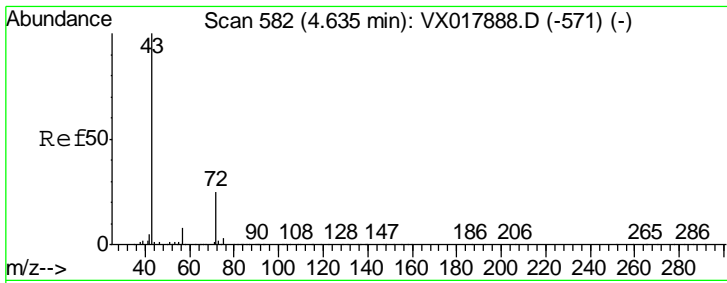
Tgt Ion	Resp	Lower	Upper
96	4034		
96	100		
61	123.9	98.4	182.8
98	63.3	44.9	83.5



#19
 1,1-Dichloroethane
 Concen: 0.819 ug/L
 RT: 3.67 min Scan# 424
 Delta R.T. -0.00 min
 Lab File: VX017899.D
 Acq: 14 Aug 2020 14:53

Tgt Ion	Resp	Lower	Upper
63	38870		
63	100		
65	35.5	22.6	42.0
83	14.9	9.5	17.7

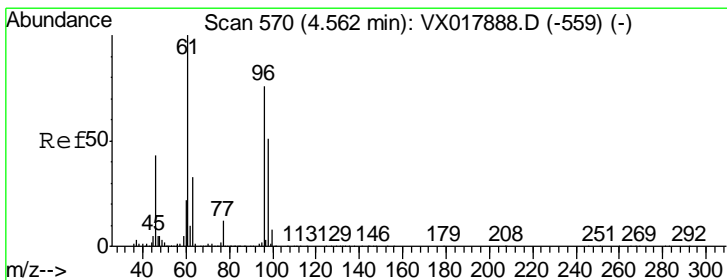
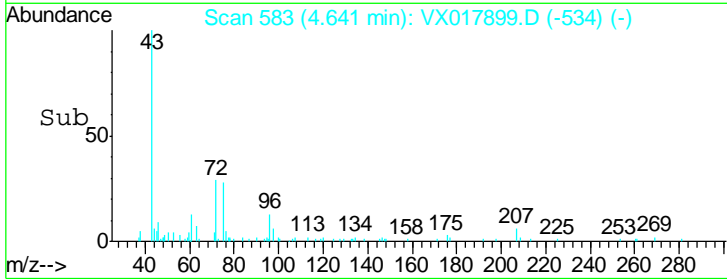
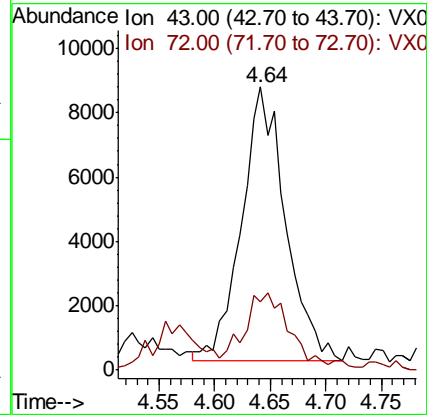
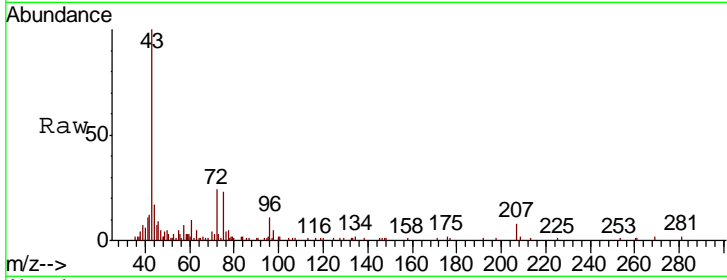




#21
 2-Butanone
 Concen: 3.276 ug/L
 RT: 4.64 min Scan# 583
 Delta R.T. -0.00 min
 Lab File: VX017899.D
 Acq: 14 Aug 2020 14:53

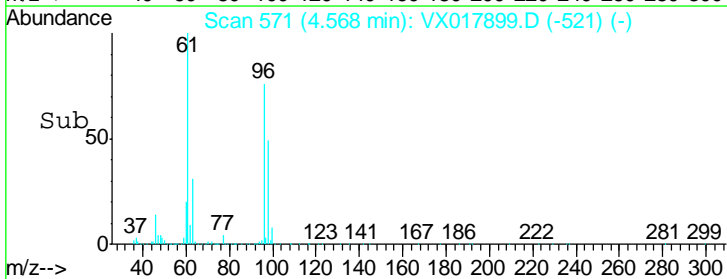
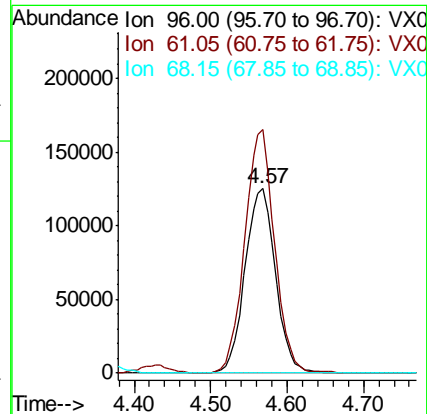
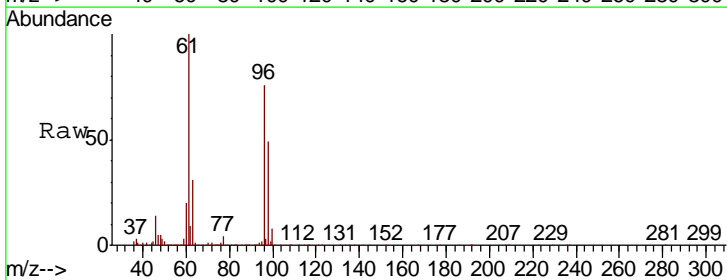
Instrument :
 MSVOA_X
 ClientSampled :
 BG0N1

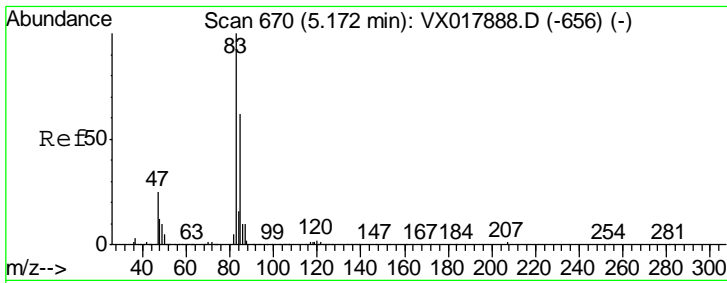
Tgt Ion: 43 Resp: 23210
 Ion Ratio Lower Upper
 43 100
 72 30.0 13.2 39.6



#22
 cis-1,2-Dichloroethene
 Concen: 12.388 ug/L
 RT: 4.57 min Scan# 571
 Delta R.T. 0.01 min
 Lab File: VX017899.D
 Acq: 14 Aug 2020 14:53

Tgt Ion: 96 Resp: 345910
 Ion Ratio Lower Upper
 96 100
 61 131.9 88.8 165.0
 68 0.0 0.2 0.4#

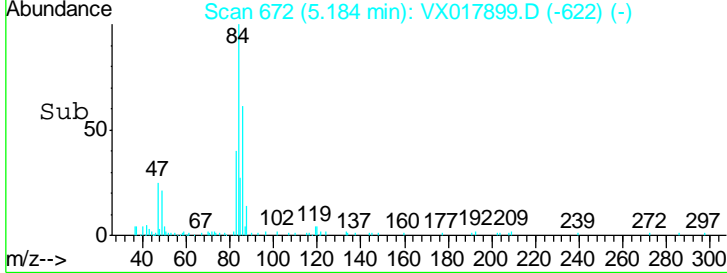
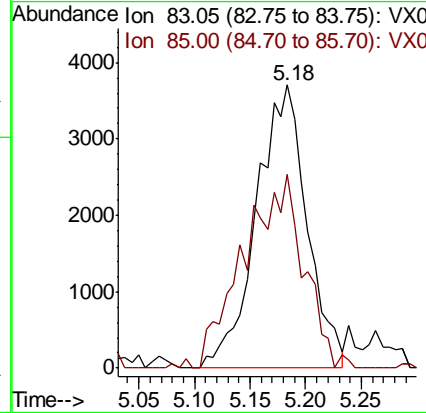
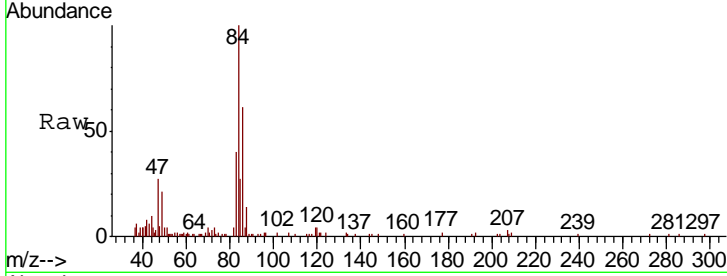




#25
 Chloroform
 Concen: 0.229 ug/L
 RT: 5.18 min Scan# 672
 Delta R.T. 0.01 min
 Lab File: VX017899.D
 Acq: 14 Aug 2020 14:53

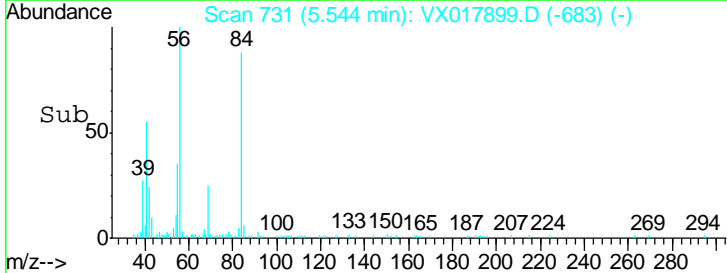
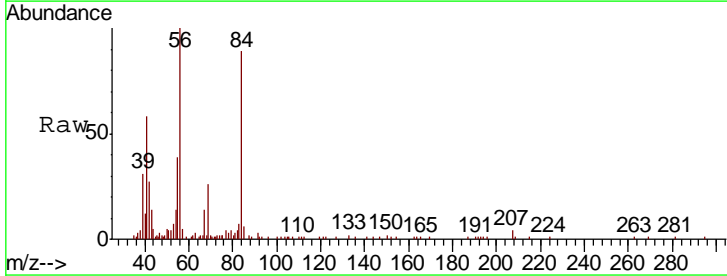
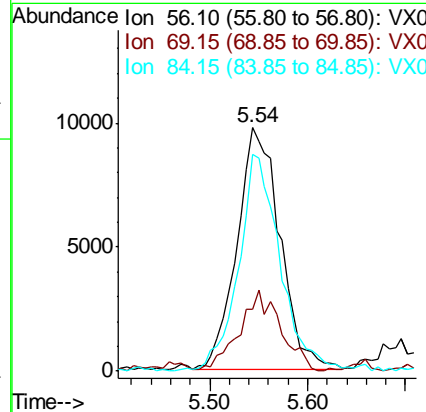
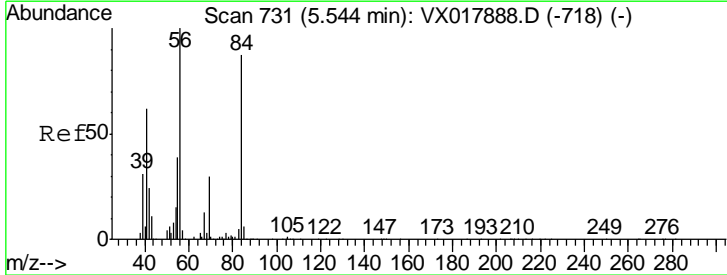
Instrument :
 MSVOA_X
ClientSampled :
 BG0N1

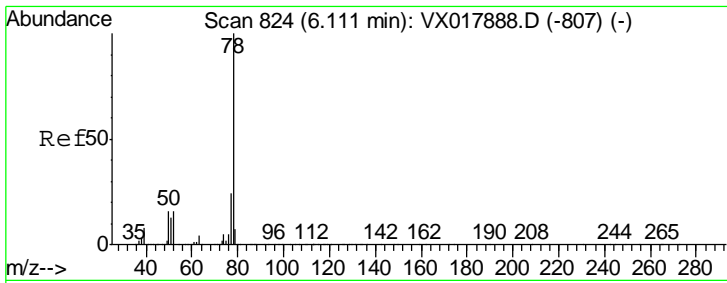
Tgt Ion	Resp	Lower	Upper
83	11727		
85	68.4	44.7	83.1



#30
 Cyclohexane
 Concen: 0.734 ug/L
 RT: 5.54 min Scan# 731
 Delta R.T. -0.01 min
 Lab File: VX017899.D
 Acq: 14 Aug 2020 14:53

Tgt Ion	Resp	Lower	Upper
56	29584		
69	32.4	25.1	37.7
84	87.3	70.7	106.1

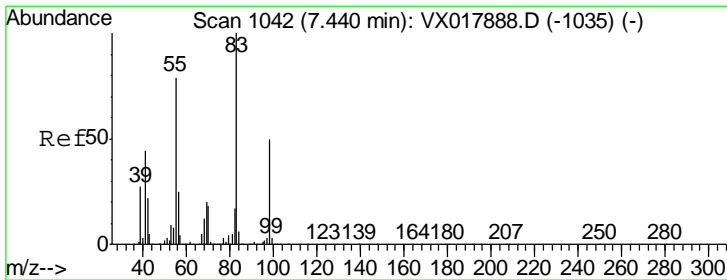
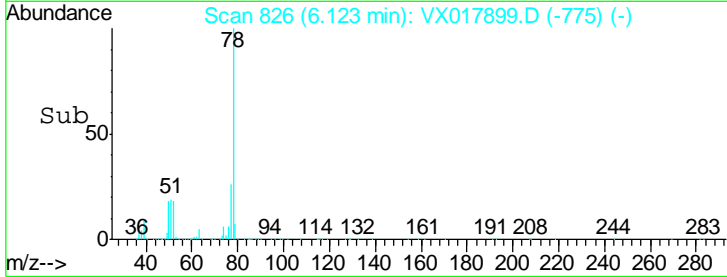
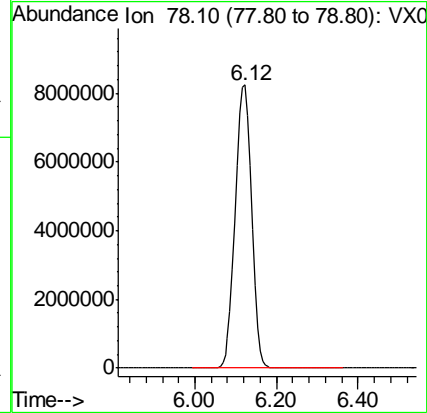
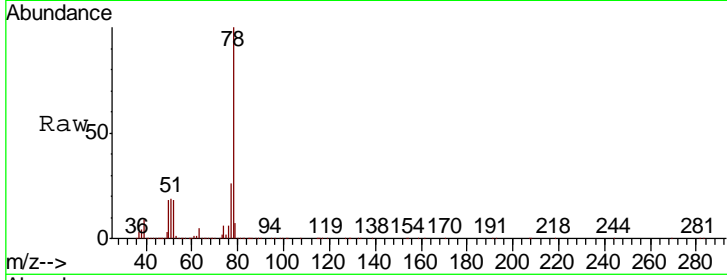




#33
Benzene
Concen: 226.341 ug/L
RT: 6.12 min Scan# 826
Delta R.T. 0.01 min
Lab File: VX017899.D
Acq: 14 Aug 2020 14:53

Instrument :
MSVOA_X
ClientSampled :
BG0N1

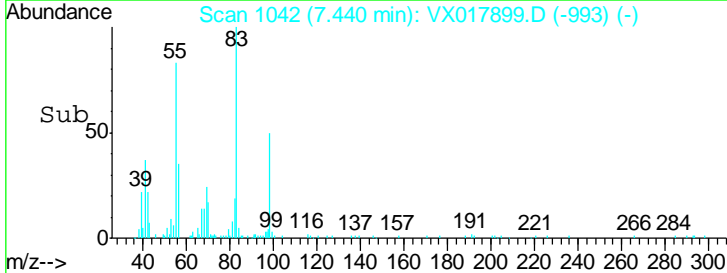
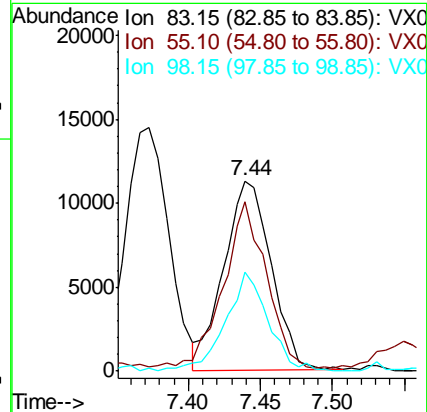
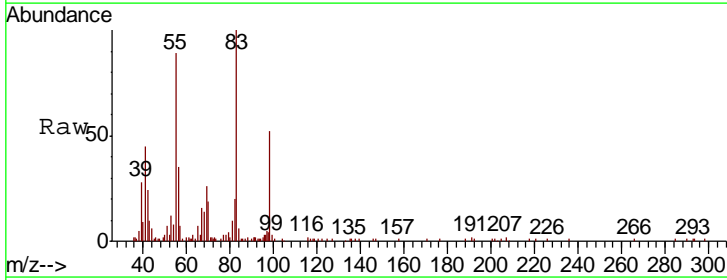
Tgt Ion: 78 Resp: 22682924

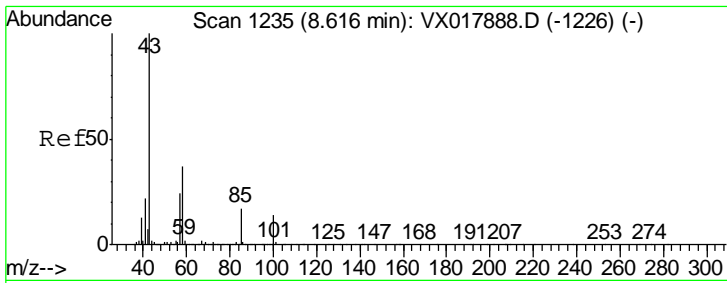


#35
Methylcyclohexane
Concen: 0.629 ug/L
RT: 7.44 min Scan# 1042
Delta R.T. -0.00 min
Lab File: VX017899.D
Acq: 14 Aug 2020 14:53

Tgt Ion: 83 Resp: 25855

Ion	Ratio	Lower	Upper
83	100		
55	78.8	62.4	93.6
98	46.9	38.0	57.0

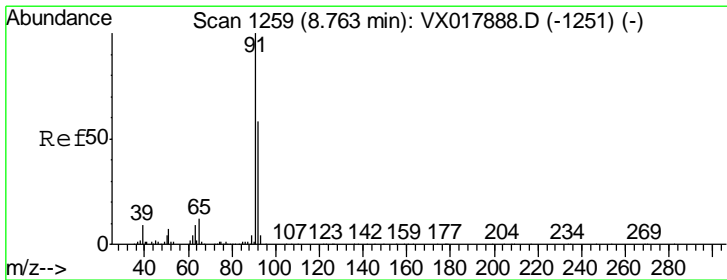
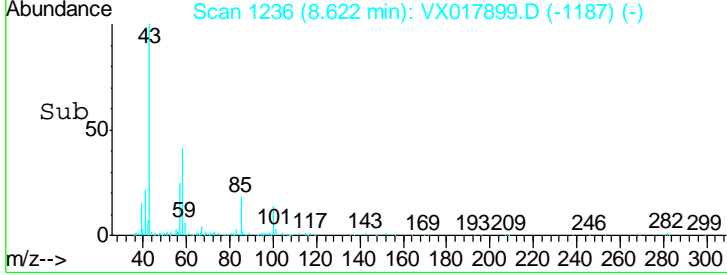
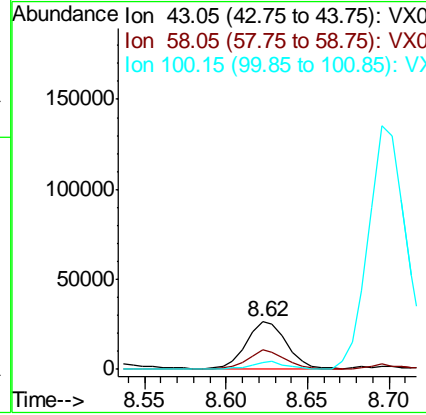
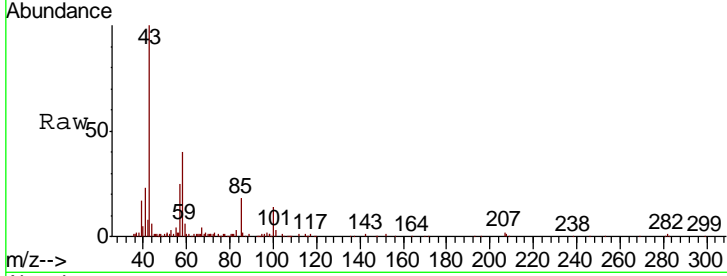




#40
 4-Methyl-2-pentanone
 Concen: 2.700 ug/L
 RT: 8.62 min Scan# 1236
 Delta R.T. -0.00 min
 Lab File: VX017899.D
 Acq: 14 Aug 2020 14:53

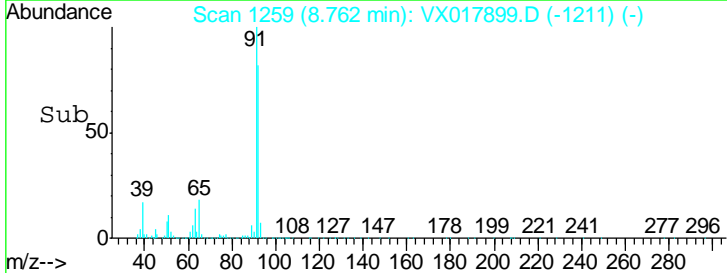
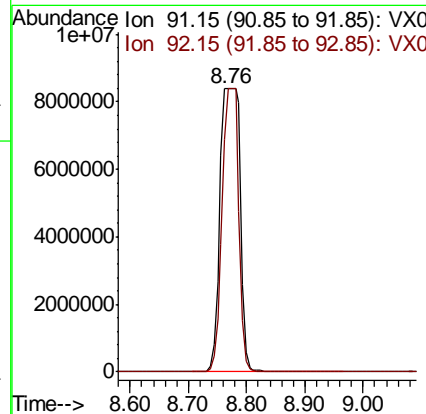
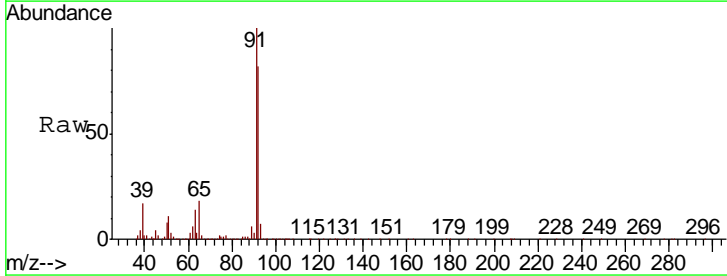
Instrument :
 MSVOA_X
ClientSampled :
 BG0N1

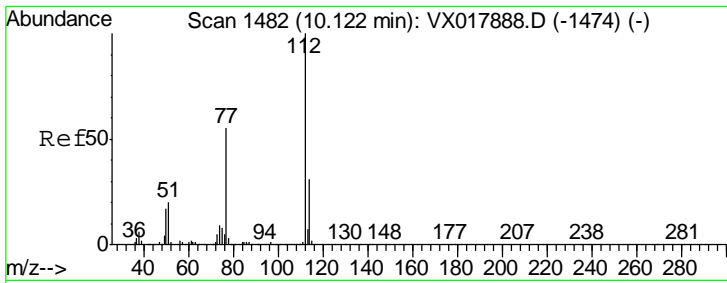
Tgt Ion	Resp	Lower	Upper
43	44300		
58	38.4	31.1	46.7
100	15.7	12.2	18.4



#42
 Toluene
 Concen: 185.726 ug/L
 RT: 8.76 min Scan# 1259
 Delta R.T. -0.01 min
 Lab File: VX017899.D
 Acq: 14 Aug 2020 14:53

Tgt Ion	Resp	Lower	Upper
91	20205016		
92	82.1	38.8	72.0#

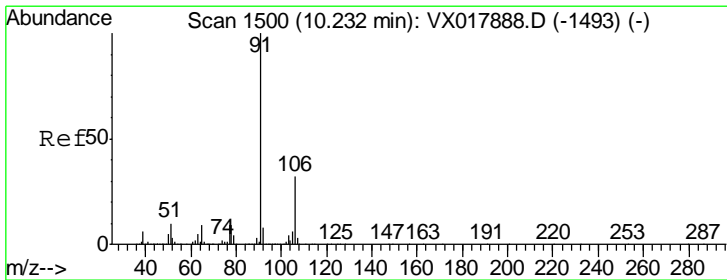
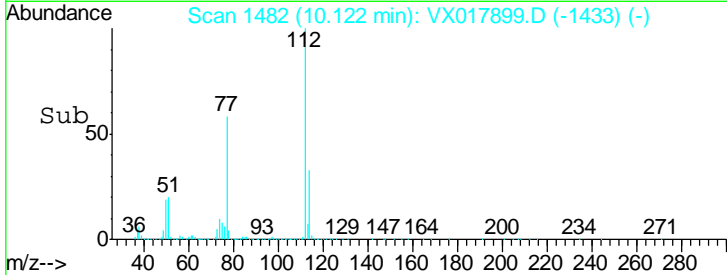
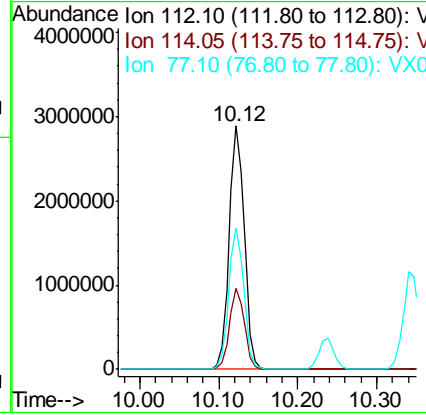
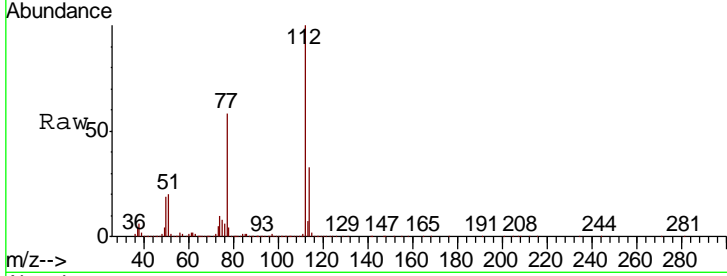




#53
 Chlorobenzene
 Concen: 54.052 ug/L
 RT: 10.12 min Scan# 1482
 Delta R.T. -0.00 min
 Lab File: VX017899.D
 Acq: 14 Aug 2020 14:53

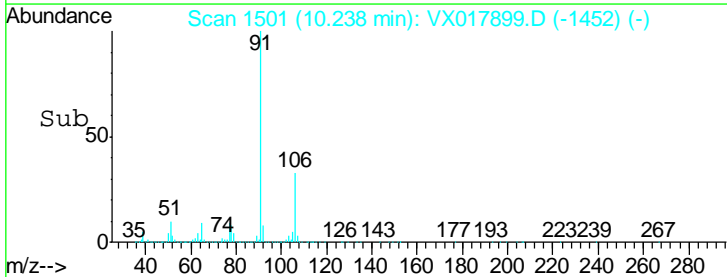
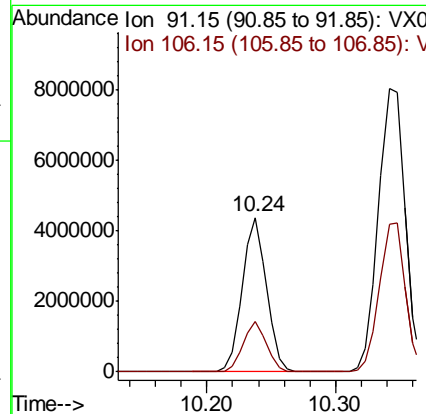
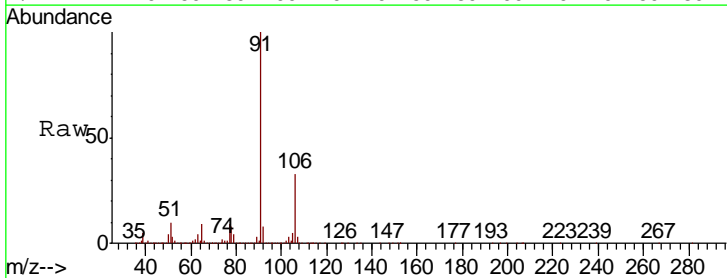
Instrument :
 MSVOA_X
 ClientSampled :
 BG0N1

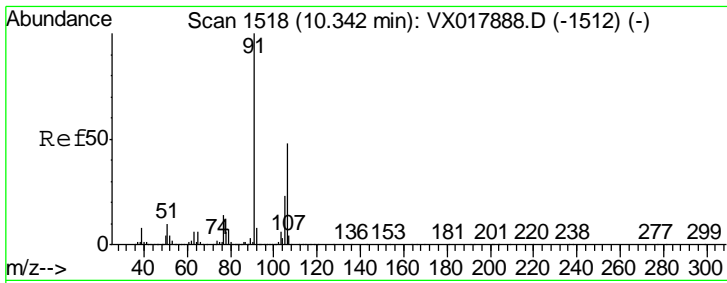
Tgt Ion	Resp	Lower	Upper
112	3827453		
114	33.1	23.5	43.7
77	58.0	46.7	70.1



#54
 Ethylbenzene
 Concen: 47.907 ug/L
 RT: 10.24 min Scan# 1501
 Delta R.T. -0.00 min
 Lab File: VX017899.D
 Acq: 14 Aug 2020 14:53

Tgt Ion	Resp	Lower	Upper
91	5687681		
106	32.5	22.5	41.9

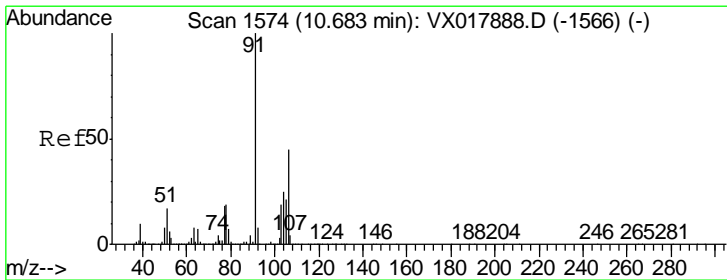
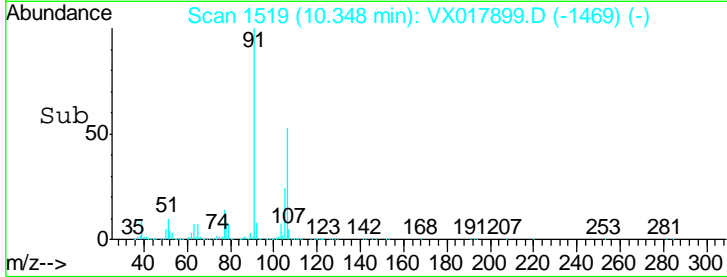
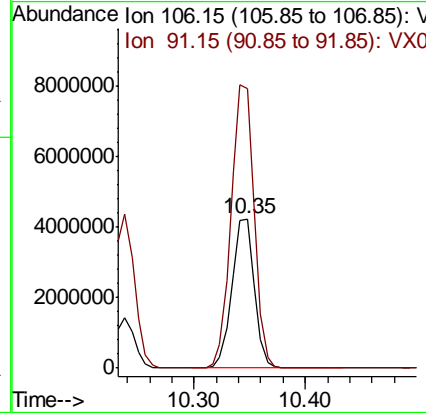
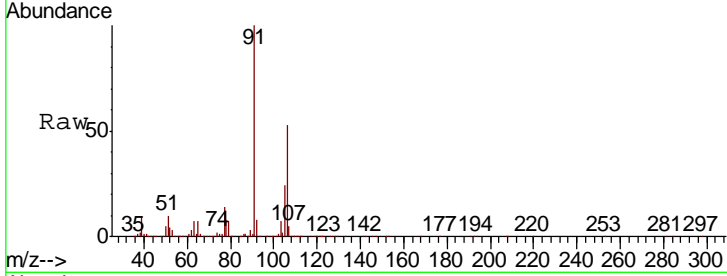




#55
 m,p-xylene
 Concen: 128.979 ug/L
 RT: 10.35 min Scan# 1519
 Delta R.T. 0.01 min
 Lab File: VX017899.D
 Acq: 14 Aug 2020 14:53

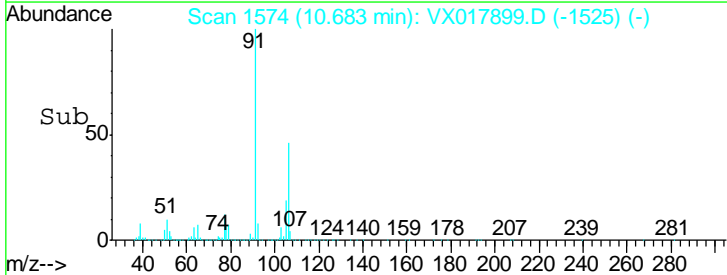
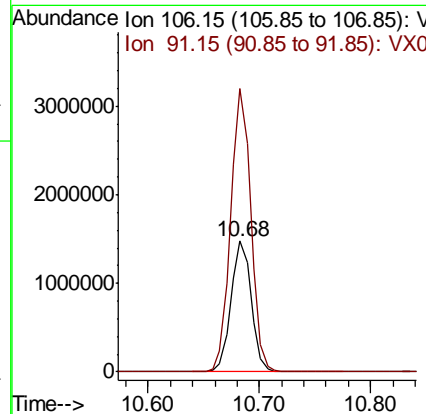
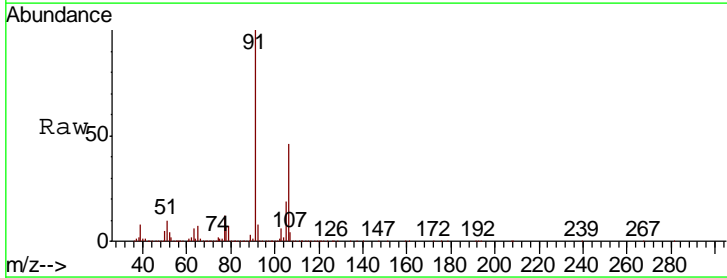
Instrument :
 MSVOA_X
 ClientSampled :
 BG0N1

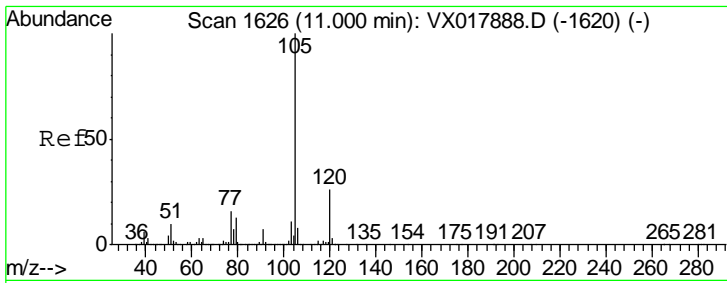
Tgt Ion:106 Resp: 5846859
 Ion Ratio Lower Upper
 106 100
 91 187.4 143.3 266.1



#56
 o-xylene
 Concen: 42.088 ug/L
 RT: 10.68 min Scan# 1574
 Delta R.T. -0.00 min
 Lab File: VX017899.D
 Acq: 14 Aug 2020 14:53

Tgt Ion:106 Resp: 1849862
 Ion Ratio Lower Upper
 106 100
 91 216.4 149.8 278.2

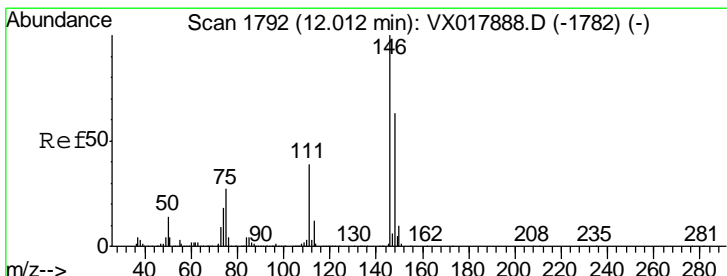
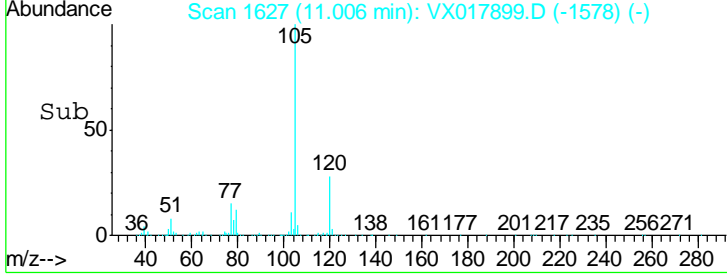
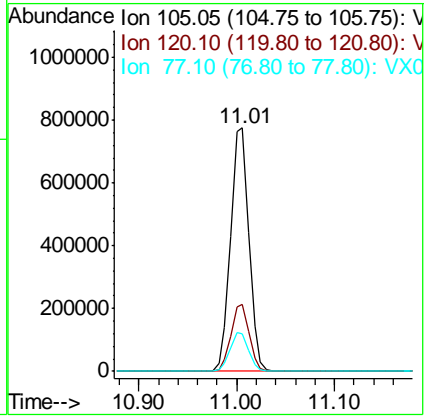
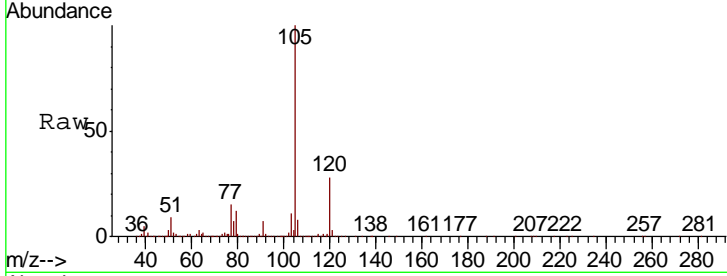




#58
 Isopropylbenzene
 Concen: 8.590 ug/L
 RT: 11.01 min Scan# 1627
 Delta R.T. -0.00 min
 Lab File: VX017899.D
 Acq: 14 Aug 2020 14:53

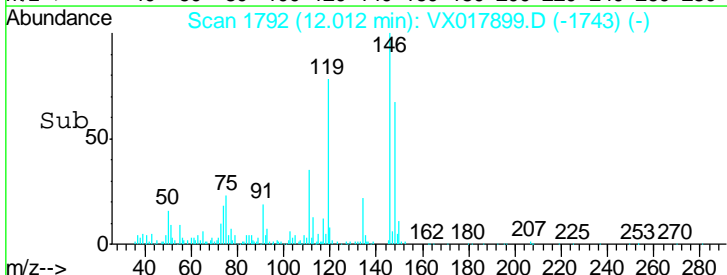
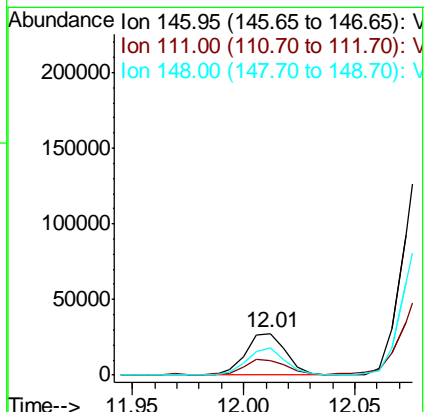
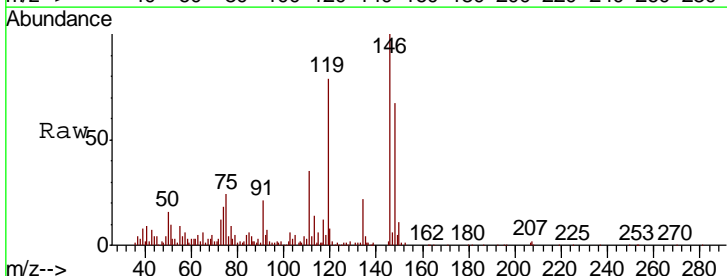
Instrument : MSVOA_X
 Client Sampled : BG0N1

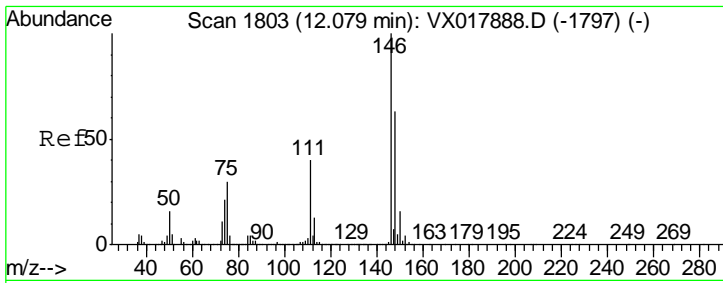
Tgt Ion	Resp	Lower	Upper
105	1010564		
120	27.5	21.8	32.6
77	15.9	12.8	19.2



#63
 1,3-Dichlorobenzene
 Concen: 0.601 ug/L
 RT: 12.01 min Scan# 1792
 Delta R.T. -0.00 min
 Lab File: VX017899.D
 Acq: 14 Aug 2020 14:53

Tgt Ion	Resp	Lower	Upper
146	34718		
111	35.3	27.6	51.4
148	66.7	43.9	81.5

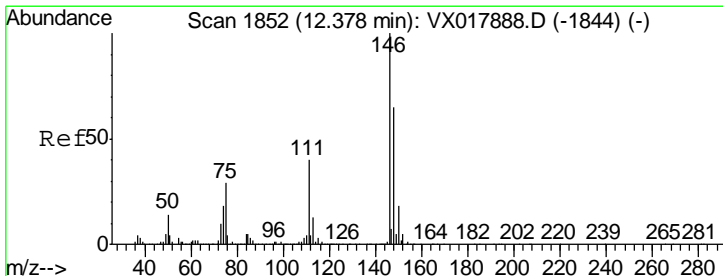
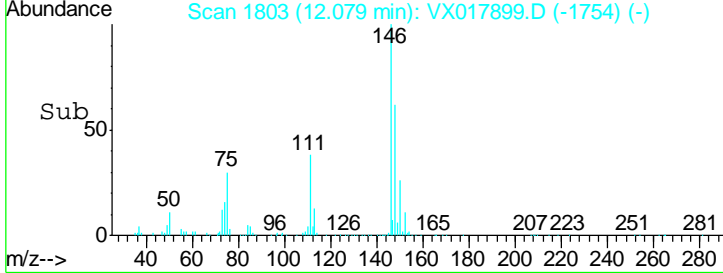
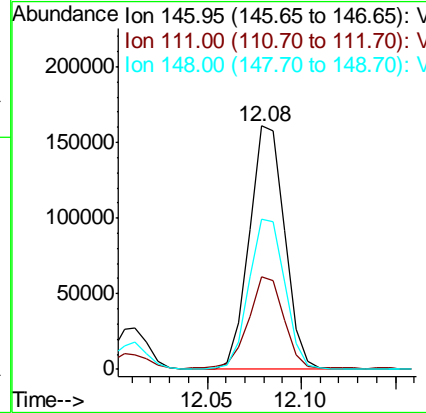
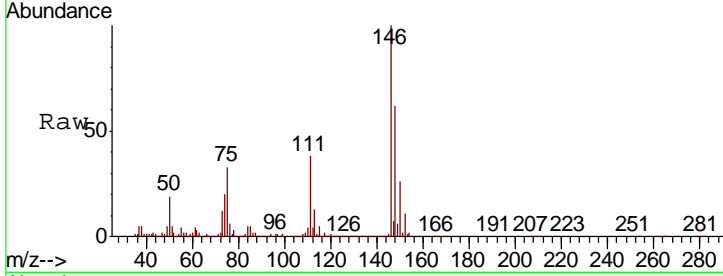




#64
 1,4-Dichlorobenzene
 Concen: 3.636 ug/L
 RT: 12.08 min Scan# 1803
 Delta R.T. -0.00 min
 Lab File: VX017899.D
 Acq: 14 Aug 2020 14:53

Instrument : MSVOA_X
 ClientSampled : B0N1

Tgt Ion	Resp	Lower	Upper
146	100		
111	38.0	26.0	48.2
148	61.8	43.2	80.2



#66
 1,2-Dichlorobenzene
 Concen: 4.364 ug/L
 RT: 12.38 min Scan# 1852
 Delta R.T. -0.00 min
 Lab File: VX017899.D
 Acq: 14 Aug 2020 14:53

Tgt Ion	Resp	Lower	Upper
146	100		
111	40.4	32.2	48.4
148	67.7	52.3	78.5

