

Data Path : Z:\voasrv\HPCHEM1\MSVOA\_X\Data\VX081425\  
 Data File : VX047337.D  
 Acq On : 14 Aug 2025 11:05  
 Operator : JC/MD  
 Sample : VX0814MBL01  
 Misc : 5.00g/10mL/100uL/5.00mL/MSVOA\_X/MEOH  
 ALS Vial : 3 Sample Multiplier: 1

Instrument :  
 MSVOA\_X  
 ClientSampleId :  
 VX0814MBL01

Quant Time: Aug 18 01:27:04 2025  
 Quant Method : Z:\voasrv\HPCHEM1\MSVOA\_X\Method\82X072125W.M  
 Quant Title : SW846 8260  
 QLast Update : Tue Jul 22 03:59:51 2025  
 Response via : Initial Calibration

| Compound                      | R.T.   | QIon           | Response | Conc      | Units     | Dev(Min) |
|-------------------------------|--------|----------------|----------|-----------|-----------|----------|
| Internal Standards            |        |                |          |           |           |          |
| 1) Pentafluorobenzene         | 5.562  | 168            | 185249   | 50.000    | ug/l      | 0.00     |
| 34) 1,4-Difluorobenzene       | 6.769  | 114            | 324168   | 50.000    | ug/l      | 0.00     |
| 63) Chlorobenzene-d5          | 10.055 | 117            | 301702   | 50.000    | ug/l      | 0.00     |
| 72) 1,4-Dichlorobenzene-d4    | 12.018 | 152            | 157404   | 50.000    | ug/l      | 0.00     |
| System Monitoring Compounds   |        |                |          |           |           |          |
| 33) 1,2-Dichloroethane-d4     | 5.958  | 65             | 149205   | 64.658    | ug/l      | 0.00     |
| Spiked Amount                 | 50.000 | Range 78 - 117 | Recovery | =         | 129.320%# |          |
| 35) Dibromofluoromethane      | 5.397  | 113            | 113421   | 56.667    | ug/l      | 0.00     |
| Spiked Amount                 | 50.000 | Range 75 - 124 | Recovery | =         | 113.340%  |          |
| 50) Toluene-d8                | 8.647  | 98             | 396084   | 61.106    | ug/l      | 0.00     |
| Spiked Amount                 | 50.000 | Range 92 - 112 | Recovery | =         | 122.220%# |          |
| 62) 4-Bromofluorobenzene      | 11.079 | 95             | 151374   | 54.191    | ug/l      | 0.00     |
| Spiked Amount                 | 50.000 | Range 83 - 123 | Recovery | =         | 108.380%  |          |
| Target Compounds              |        |                |          |           |           |          |
|                               |        |                |          |           |           | Qvalue   |
| 3) Chloromethane              | 1.312  | 50             | 565      | 0.232     | ug/l      | 90       |
| 5) Bromomethane               | 1.642  | 94             | 1501     | 1.056     | ug/l #    | 49       |
| 10) Methyl Iodide             | 2.483  | 142            | 7267     | 3.034     | ug/l #    | 86       |
| 11) Tert butyl alcohol        | 2.959  | 59             | 377      | Below Cal | #         | 72       |
| 13) Acrolein                  | 2.251  | 56             | 605      | 1.218     | ug/l #    | 76       |
| 14) Allyl chloride            | 2.678  | 41             | 921      | 0.219     | ug/l #    | 48       |
| 15) Acrylonitrile             | 3.080  | 53             | 375      | 0.341     | ug/l #    | 22       |
| 16) Acetone                   | 2.398  | 43             | 1789     | 1.935     | ug/l #    | 72       |
| 17) Carbon Disulfide          | 2.532  | 76             | 4397     | 0.653     | ug/l      | 97       |
| 18) Methyl Acetate            | 2.721  | 43             | 898      | 0.366     | ug/l #    | 54       |
| 20) Methylene Chloride        | 2.800  | 84             | 1196     | 0.470     | ug/l #    | 85       |
| 21) trans-1,2-Dichloroethene  | 3.117  | 96             | 529      | 0.222     | ug/l #    | 71       |
| 23) Vinyl Acetate             | 3.763  | 43             | 2202     | 0.339     | ug/l #    | 73       |
| 36) 1,1-Dichloropropene       | 5.556  | 75             | 15197    | 4.454     | ug/l #    | 52       |
| 38) Carbon Tetrachloride      | 5.562  | 117            | 19119    | 5.250     | ug/l #    | 16       |
| 39) Methylcyclohexane         | 7.397  | 83             | 1092     | 0.256     | ug/l #    | 81       |
| 49) 1,4-Dioxane               | 7.708  | 88             | 82       | 2.700     | ug/l #    | 1        |
| 51) 4-Methyl-2-Pentanone      | 8.579  | 43             | 1153     | 0.396     | ug/l #    | 68       |
| 59) 2-Hexanone                | 9.482  | 43             | 404      | 0.210     | ug/l      | 81       |
| 64) Tetrachloroethene         | 9.268  | 164            | 626      | 0.288     | ug/l #    | 62       |
| 68) m/p-Xylenes               | 10.311 | 106            | 1394     | 0.301     | ug/l      | 96       |
| 76) 1,2,3-Trichloropropane    | 11.079 | 75             | 78352    | 26.893    | ug/l #    | 35       |
| 77) Bromobenzene              | 11.195 | 156            | 605      | 0.203     | ug/l      | 97       |
| 78) n-propylbenzene           | 11.305 | 91             | 3475     | 0.234     | ug/l      | 94       |
| 79) 2-Chlorotoluene           | 11.366 | 91             | 2092     | 0.236     | ug/l      | 94       |
| 80) 1,3,5-Trimethylbenzene    | 11.457 | 105            | 2383     | 0.232     | ug/l      | 97       |
| 81) trans-1,4-Dichloro-2-b... | 11.079 | 75             | 78352    | 69.287    | ug/l #    | 8        |
| 82) 4-Chlorotoluene           | 11.463 | 91             | 2888     | 0.279     | ug/l      | 89       |
| 83) tert-Butylbenzene         | 11.713 | 119            | 2475     | 0.240     | ug/l      | 91       |
| 84) 1,2,4-Trimethylbenzene    | 11.750 | 105            | 2523     | 0.247     | ug/l      | 93       |
| 85) sec-Butylbenzene          | 11.890 | 105            | 4544     | 0.353     | ug/l      | 99       |
| 86) p-Isopropyltoluene        | 12.012 | 119            | 3928     | 0.368     | ug/l      | 85       |
| 87) 1,3-Dichlorobenzene       | 11.975 | 146            | 1886     | 0.333     | ug/l      | 94       |
| 88) 1,4-Dichlorobenzene       | 11.975 | 146            | 1886     | 0.329     | ug/l      | 92       |
| 89) n-Butylbenzene            | 12.335 | 91             | 5849     | 0.585     | ug/l      | 90       |
| 90) Hexachloroethane          | 12.536 | 117            | 719      | 0.377     | ug/l      | 96       |

Data Path : Z:\voasrv\HPCHEM1\MSVOA\_X\Data\VX081425\  
Data File : VX047337.D  
Acq On : 14 Aug 2025 11:05  
Operator : JC/MD  
Sample : VX0814MBL01  
Misc : 5.00g/10mL/100uL/5.00mL/MSVOA\_X/MEOH  
ALS Vial : 3 Sample Multiplier: 1

Instrument :  
MSVOA\_X  
ClientSampleId :  
VX0814MBL01

Quant Time: Aug 18 01:27:04 2025  
Quant Method : Z:\voasrv\HPCHEM1\MSVOA\_X\Method\82X072125W.M  
Quant Title : SW846 8260  
QLast Update : Tue Jul 22 03:59:51 2025  
Response via : Initial Calibration

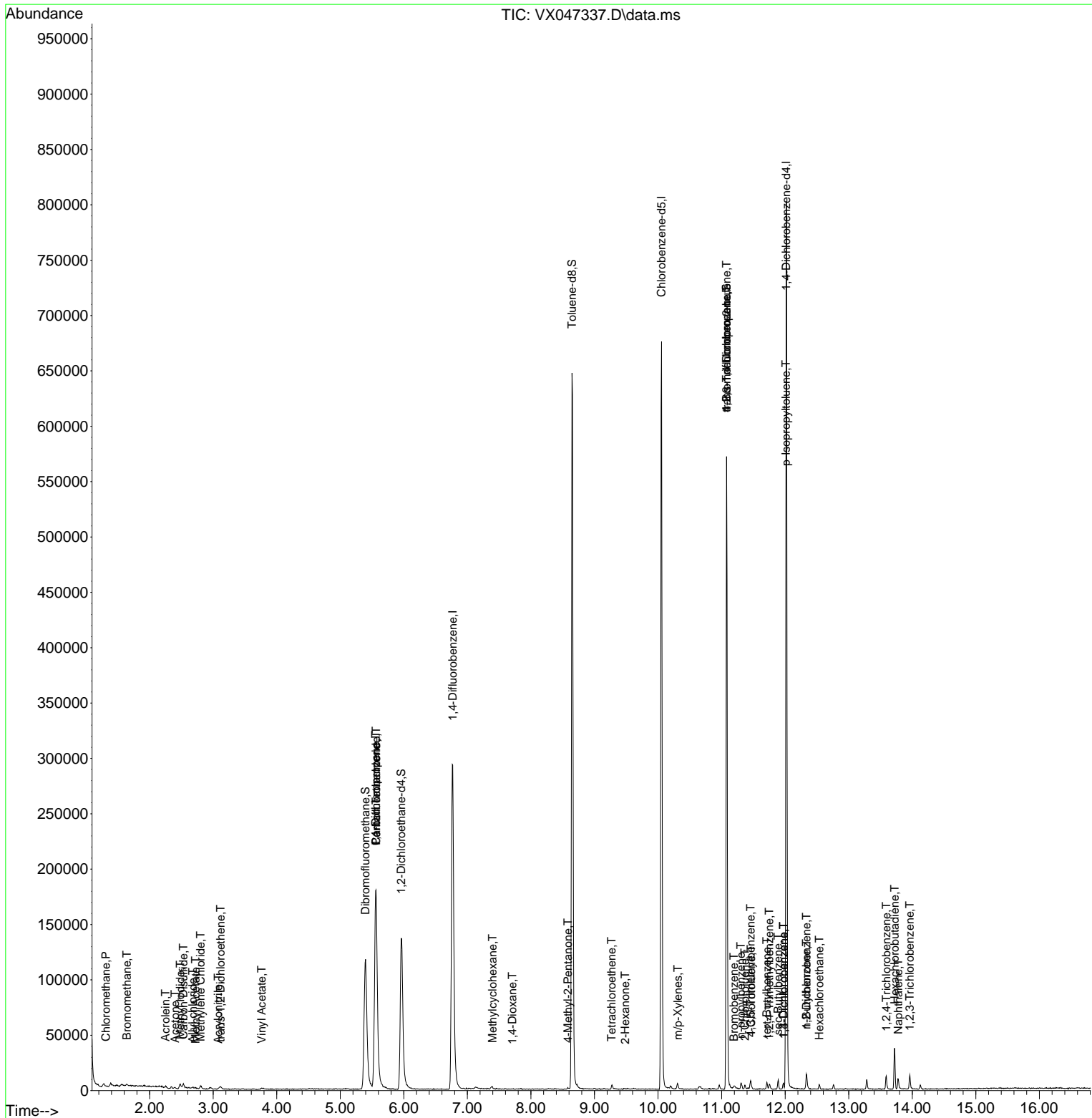
| Compound                   | R.T.   | QIon | Response | Conc  | Units | Dev(Min) |
|----------------------------|--------|------|----------|-------|-------|----------|
| 91) 1,2-Dichlorobenzene    | 12.335 | 146  | 1514     | 0.280 | ug/l  | 99       |
| 93) 1,2,4-Trichlorobenzene | 13.591 | 180  | 3131     | 0.876 | ug/l  | 95       |
| 94) Hexachlorobutadiene    | 13.725 | 225  | 5030     | 4.139 | ug/l  | 99       |
| 95) Naphthalene            | 13.780 | 128  | 7322     | 0.699 | ug/l  | 98       |
| 96) 1,2,3-Trichlorobenzene | 13.963 | 180  | 3087     | 0.897 | ug/l  | 92       |

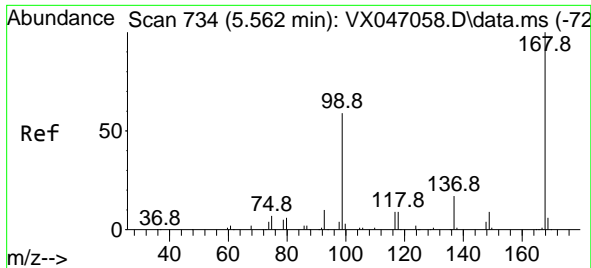
(#) = qualifier out of range (m) = manual integration (+) = signals summed

Data Path : Z:\voasrv\HPCHEM1\MSVOA\_X\Data\VX081425\  
 Data File : VX047337.D  
 Acq On : 14 Aug 2025 11:05  
 Operator : JC/MD  
 Sample : VX0814MBL01  
 Misc : 5.00g/10mL/100uL/5.00mL/MSVOA\_X/MEOH  
 ALS Vial : 3 Sample Multiplier: 1

Instrument :  
 MSVOA\_X  
 ClientSampleId :  
 VX0814MBL01

Quant Time: Aug 18 01:27:04 2025  
 Quant Method : Z:\voasrv\HPCHEM1\MSVOA\_X\Method\82X072125W.M  
 Quant Title : SW846 8260  
 QLast Update : Tue Jul 22 03:59:51 2025  
 Response via : Initial Calibration

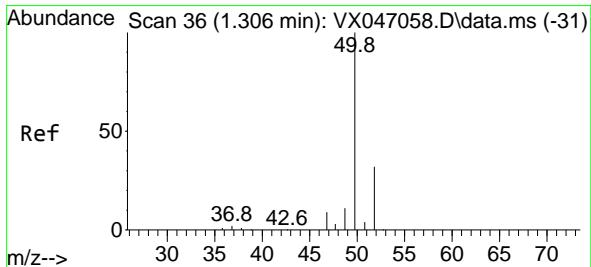
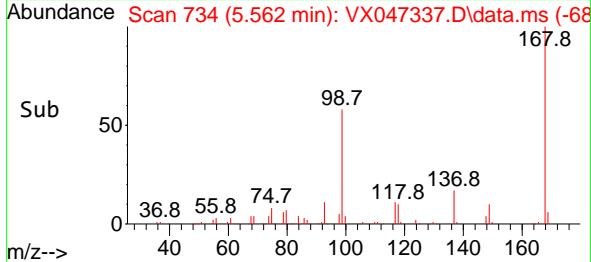
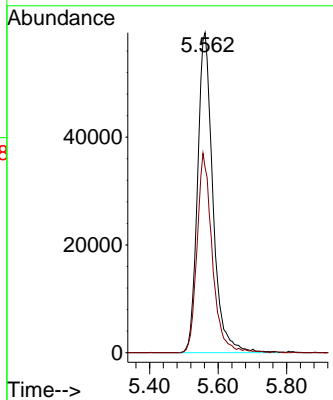
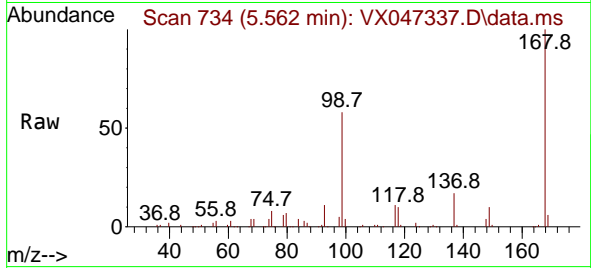




#1  
 Pentafluorobenzene  
 Concen: 50.000 ug/l  
 RT: 5.562 min Scan# 71  
 Delta R.T. -0.000 min  
 Lab File: VX047337.D  
 Acq: 14 Aug 2025 11:05

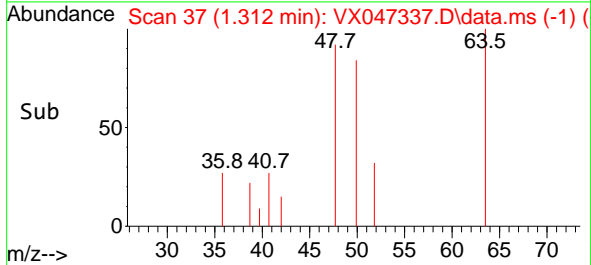
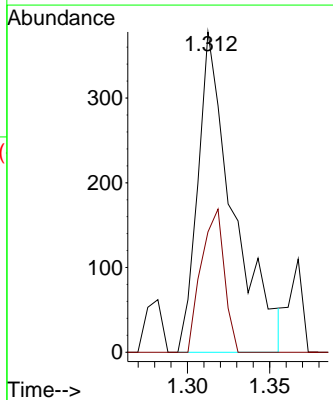
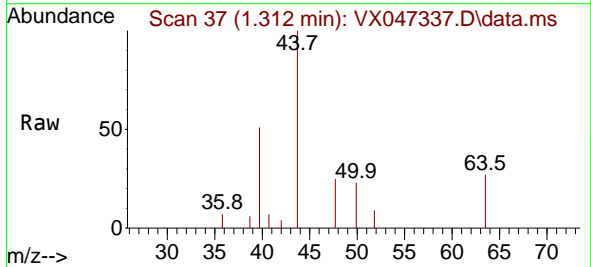
Instrument :  
 MSVOA\_X  
 ClientSampleId :  
 VX0814MBL01

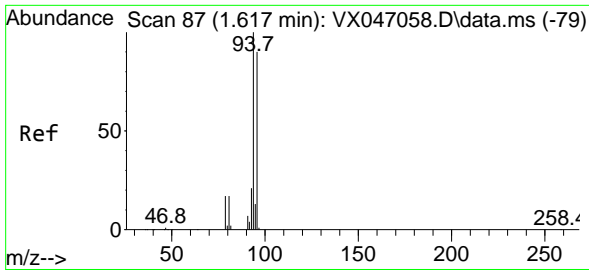
Tgt Ion:168 Resp: 185249  
 Ion Ratio Lower Upper  
 168 100  
 99 57.8 48.0 72.0



#3  
 Chloromethane  
 Concen: 0.232 ug/l  
 RT: 1.312 min Scan# 37  
 Delta R.T. 0.006 min  
 Lab File: VX047337.D  
 Acq: 14 Aug 2025 11:05

Tgt Ion: 50 Resp: 565  
 Ion Ratio Lower Upper  
 50 100  
 52 37.6 25.4 38.2

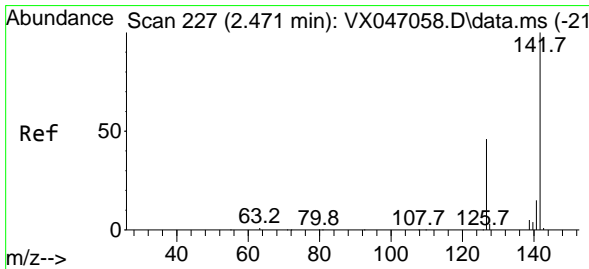
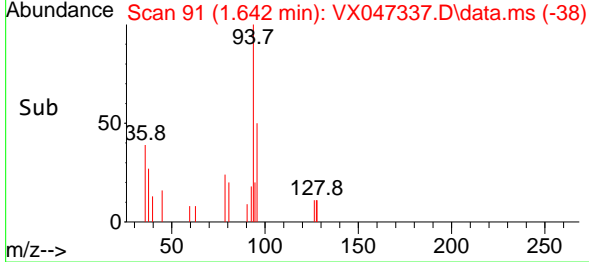
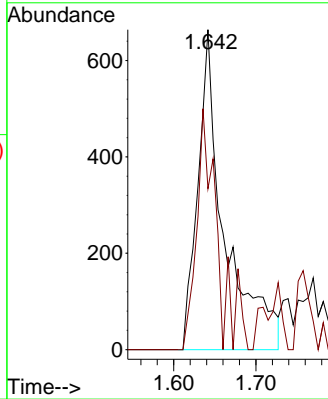
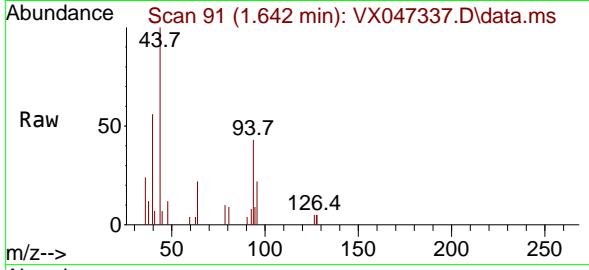




#5  
 Bromomethane  
 Concen: 1.056 ug/l  
 RT: 1.642 min Scan# 91  
 Delta R.T. 0.024 min  
 Lab File: VX047337.D  
 Acq: 14 Aug 2025 11:05

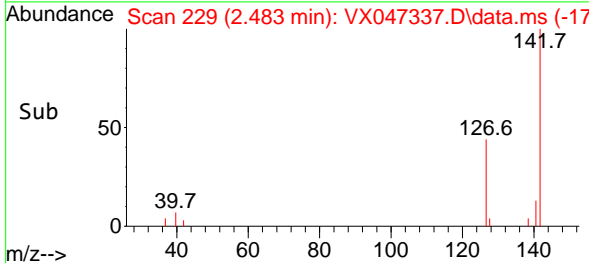
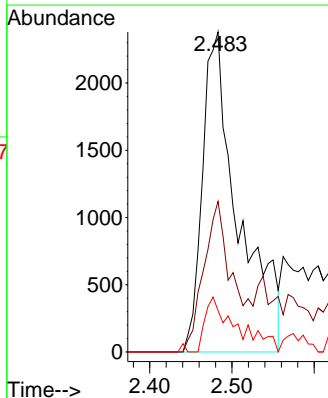
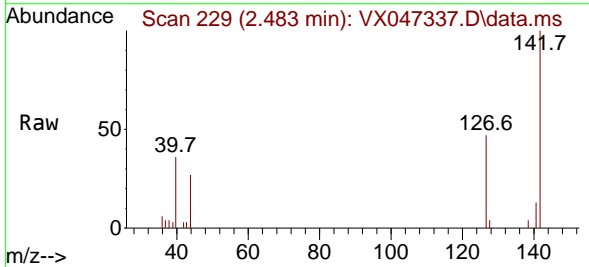
Instrument :  
 MSVOA\_X  
 ClientSampleId :  
 VX0814MBL01

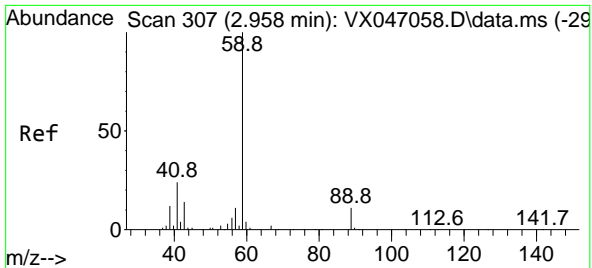
Tgt Ion: 94 Resp: 1501  
 Ion Ratio Lower Upper  
 94 100  
 96 41.8 72.3 108.5#



#10  
 Methyl Iodide  
 Concen: 3.034 ug/l  
 RT: 2.483 min Scan# 229  
 Delta R.T. 0.012 min  
 Lab File: VX047337.D  
 Acq: 14 Aug 2025 11:05

Tgt Ion: 142 Resp: 7267  
 Ion Ratio Lower Upper  
 142 100  
 127 35.0 36.6 54.8#  
 141 11.2 10.9 16.3

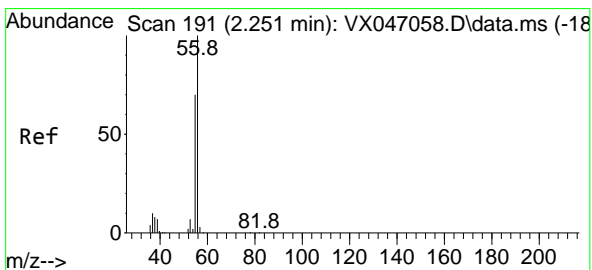
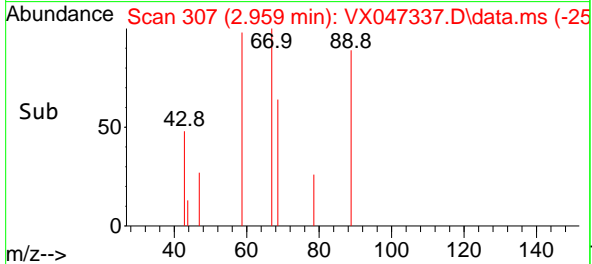
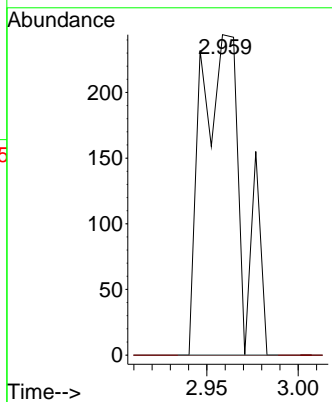
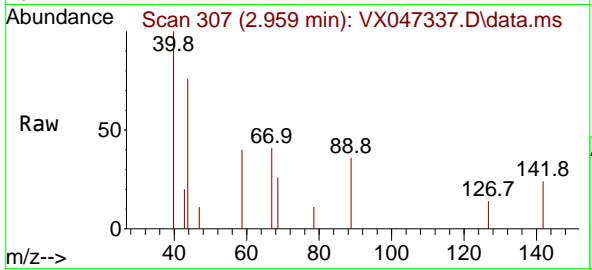




#11  
 Tert butyl alcohol  
 Concen: Below Cal  
 RT: 2.959 min Scan# 30  
 Delta R.T. 0.001 min  
 Lab File: VX047337.D  
 Acq: 14 Aug 2025 11:05

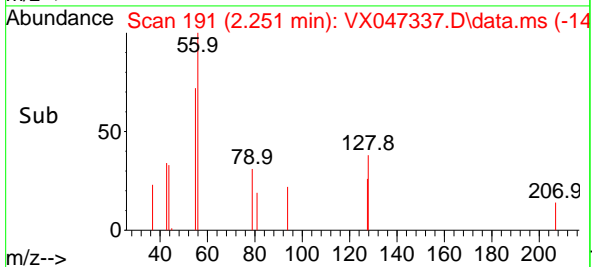
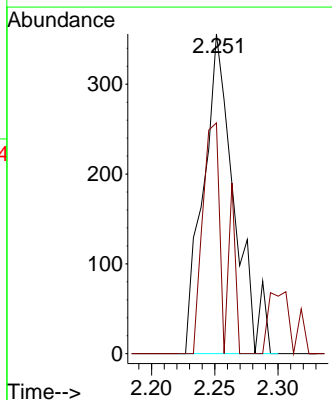
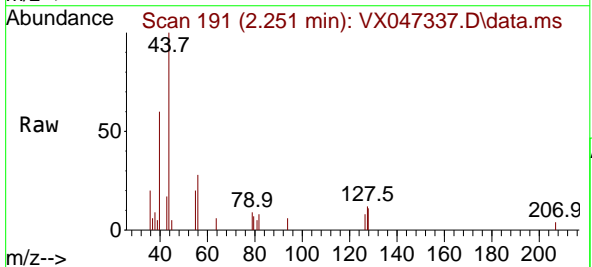
Instrument : MSVOA\_X  
 ClientSampleId : VX0814MBL01

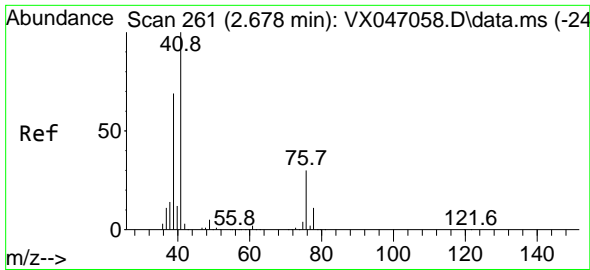
Tgt Ion: 59 Resp: 377  
 Ion Ratio Lower Upper  
 59 100  
 57 0.0 8.5 12.7#



#13  
 Acrolein  
 Concen: 1.218 ug/l  
 RT: 2.251 min Scan# 191  
 Delta R.T. 0.000 min  
 Lab File: VX047337.D  
 Acq: 14 Aug 2025 11:05

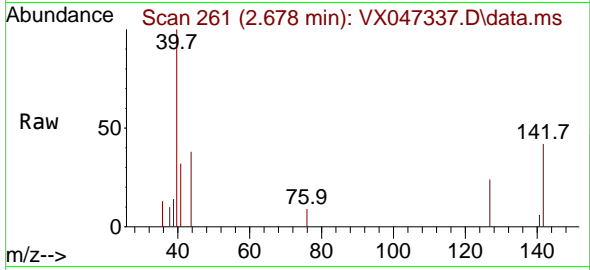
Tgt Ion: 56 Resp: 605  
 Ion Ratio Lower Upper  
 56 100  
 55 50.1 55.7 83.5#



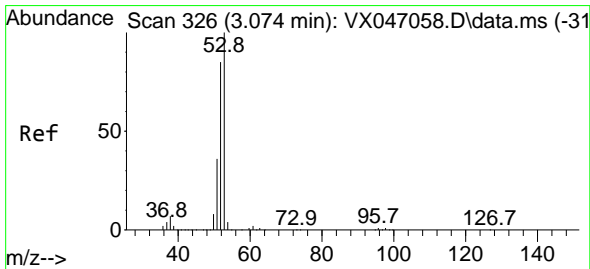
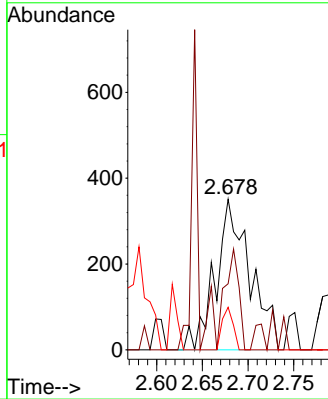
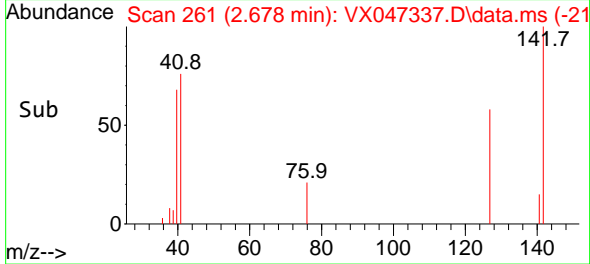


#14  
 Allyl chloride  
 Concen: 0.219 ug/l  
 RT: 2.678 min Scan# 20  
 Delta R.T. 0.000 min  
 Lab File: VX047337.D  
 Acq: 14 Aug 2025 11:05

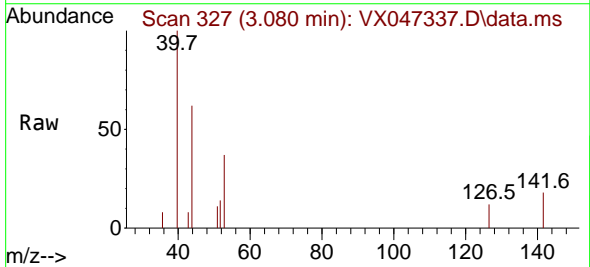
Instrument : MSVOA\_X  
 ClientSampleId : VX0814MBL01



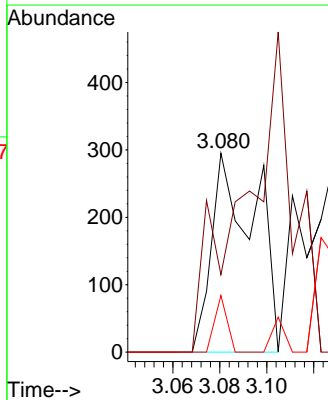
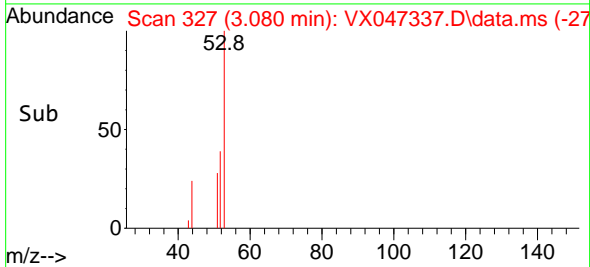
Tgt Ion: 41 Resp: 921  
 Ion Ratio Lower Upper  
 41 100  
 39 26.9 52.6 78.8#  
 76 0.0 25.7 38.5#

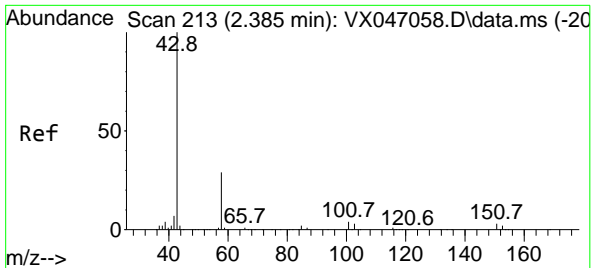


#15  
 Acrylonitrile  
 Concen: 0.341 ug/l  
 RT: 3.080 min Scan# 327  
 Delta R.T. 0.006 min  
 Lab File: VX047337.D  
 Acq: 14 Aug 2025 11:05



Tgt Ion: 53 Resp: 375  
 Ion Ratio Lower Upper  
 53 100  
 52 0.0 65.7 98.5#  
 51 8.3 28.8 43.2#

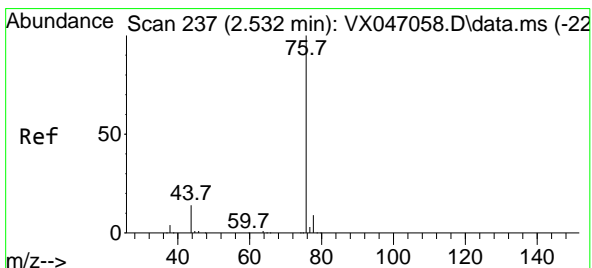
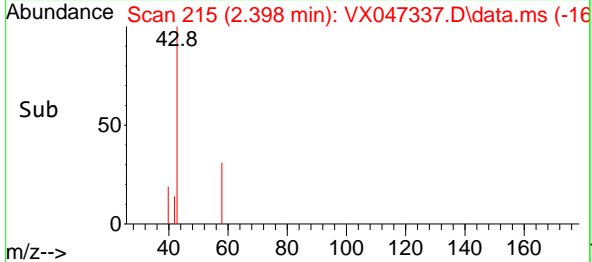
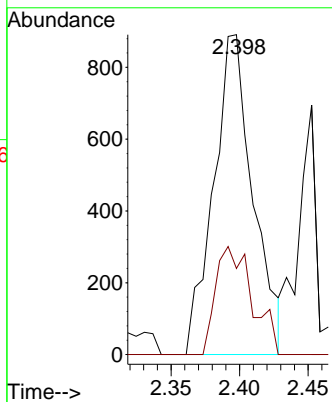
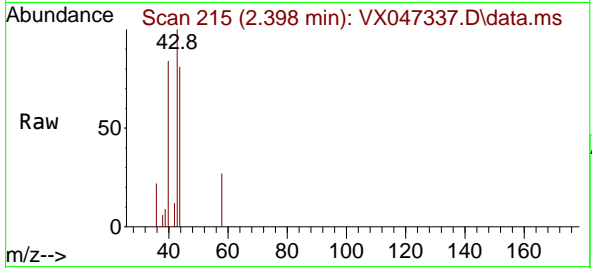




#16  
 Acetone  
 Concen: 1.935 ug/l  
 RT: 2.398 min Scan# 215  
 Delta R.T. 0.012 min  
 Lab File: VX047337.D  
 Acq: 14 Aug 2025 11:05

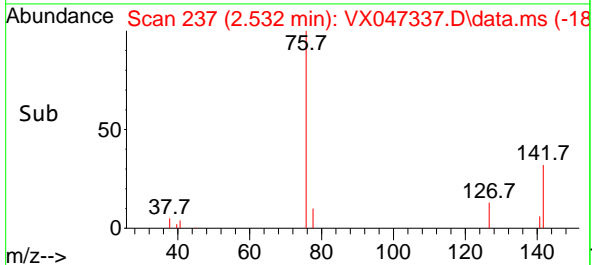
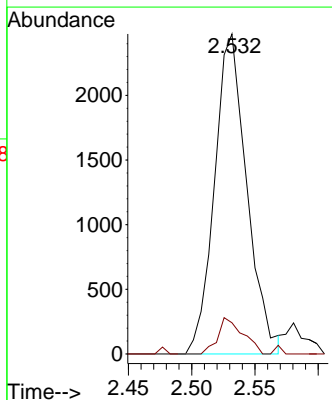
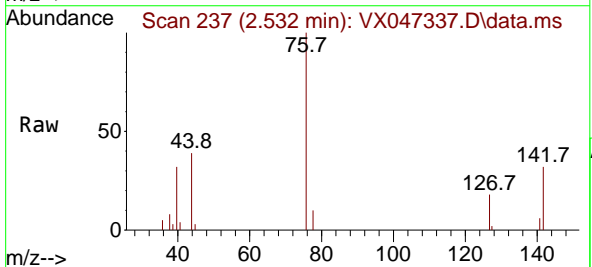
Instrument :  
 MSVOA\_X  
 ClientSampleId :  
 VX0814MBL01

Tgt Ion: 43 Resp: 1789  
 Ion Ratio Lower Upper  
 43 100  
 58 14.9 24.0 36.0#

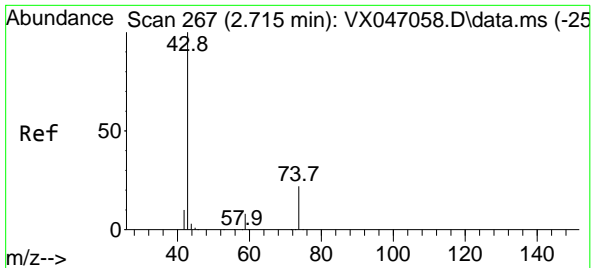


#17  
 Carbon Disulfide  
 Concen: 0.653 ug/l  
 RT: 2.532 min Scan# 237  
 Delta R.T. 0.000 min  
 Lab File: VX047337.D  
 Acq: 14 Aug 2025 11:05

Tgt Ion: 76 Resp: 4397  
 Ion Ratio Lower Upper  
 76 100  
 78 9.8 7.0 10.4



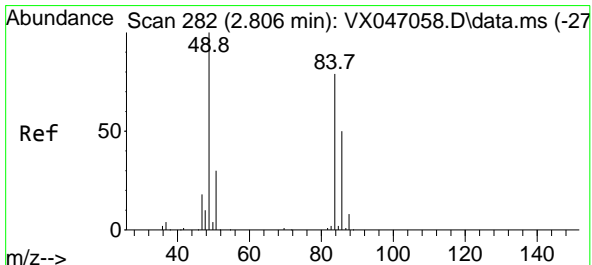
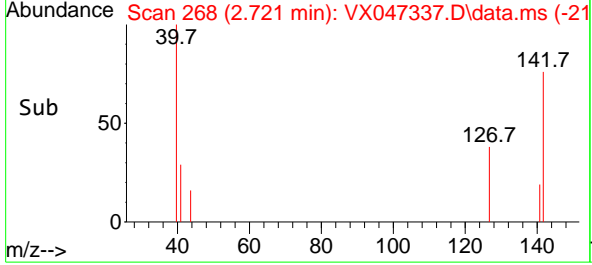
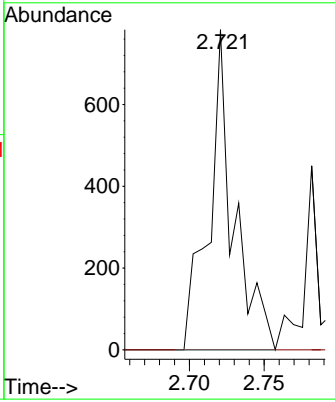
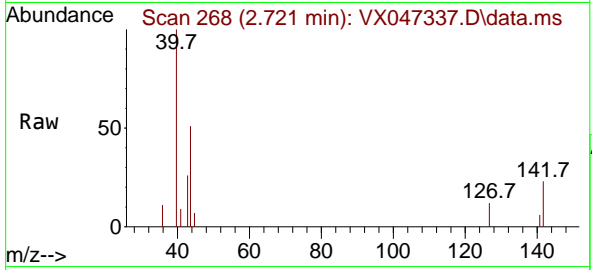




#18  
 Methyl Acetate  
 Concen: 0.366 ug/l  
 RT: 2.721 min Scan# 20  
 Delta R.T. 0.006 min  
 Lab File: VX047337.D  
 Acq: 14 Aug 2025 11:05

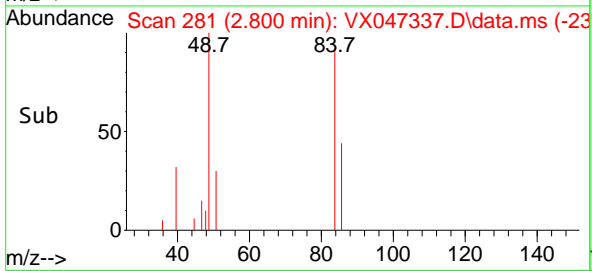
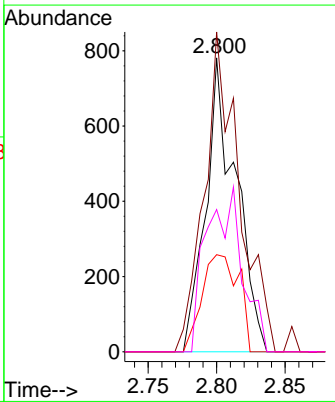
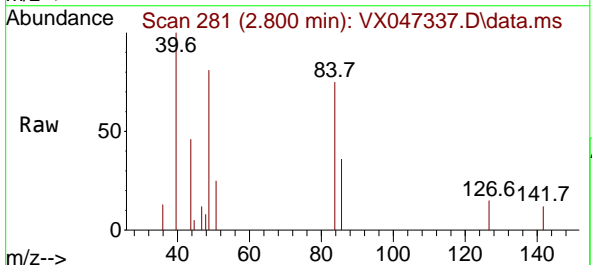
Instrument : MSVOA\_X  
 Client Sample Id : VX0814MBL01

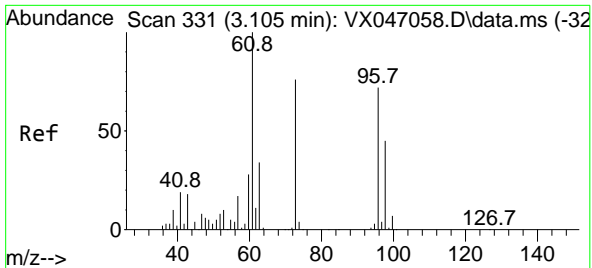
Tgt Ion: 43 Resp: 898  
 Ion Ratio Lower Upper  
 43 100  
 74 0.0 17.7 26.5#



#20  
 Methylene Chloride  
 Concen: 0.470 ug/l  
 RT: 2.800 min Scan# 281  
 Delta R.T. -0.006 min  
 Lab File: VX047337.D  
 Acq: 14 Aug 2025 11:05

Tgt Ion: 84 Resp: 1196  
 Ion Ratio Lower Upper  
 84 100  
 49 108.8 101.6 152.4  
 51 33.0 30.3 45.5  
 86 48.4 50.6 75.8#

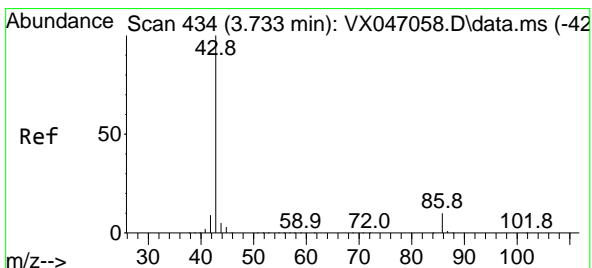
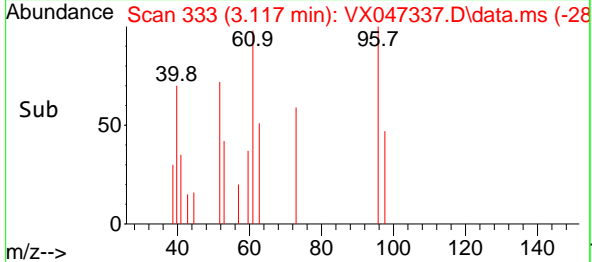
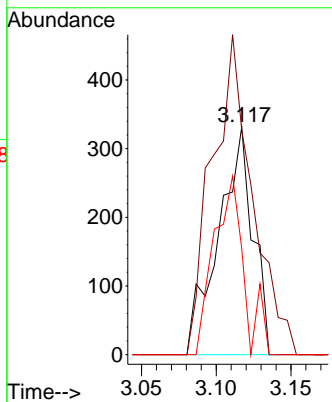
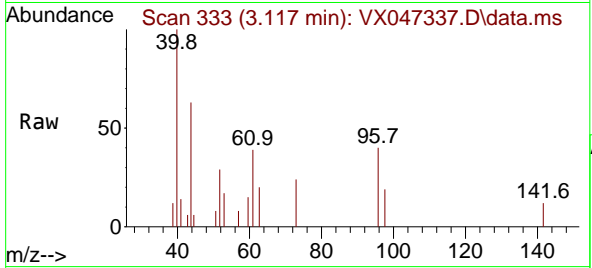




#21  
 trans-1,2-Dichloroethene  
 Concen: 0.222 ug/l  
 RT: 3.117 min Scan# 311  
 Delta R.T. 0.012 min  
 Lab File: VX047337.D  
 Acq: 14 Aug 2025 11:05

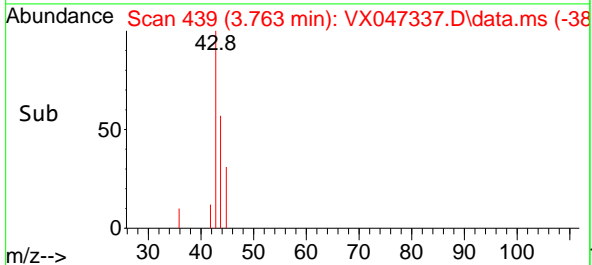
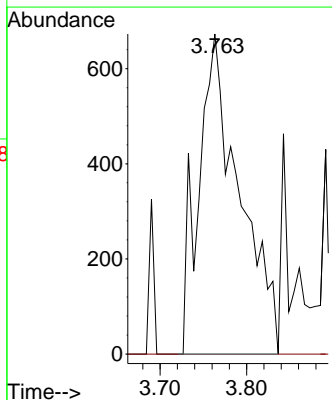
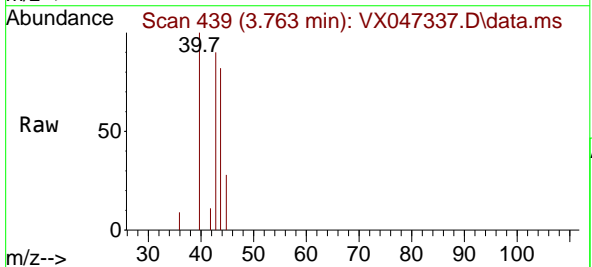
Instrument : MSVOA\_X  
 ClientSampleId : VX0814MBL01

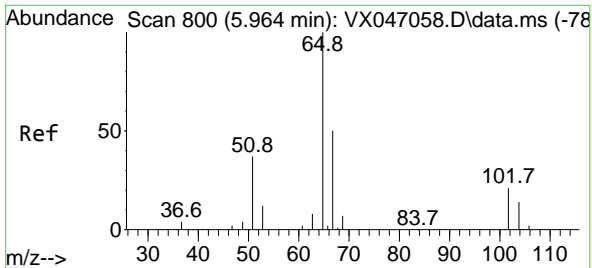
Tgt Ion: 96 Resp: 529  
 Ion Ratio Lower Upper  
 96 100  
 61 98.5 111.1 166.7#  
 98 46.7 49.6 74.4#



#23  
 Vinyl Acetate  
 Concen: 0.339 ug/l  
 RT: 3.763 min Scan# 439  
 Delta R.T. 0.031 min  
 Lab File: VX047337.D  
 Acq: 14 Aug 2025 11:05

Tgt Ion: 43 Resp: 2202  
 Ion Ratio Lower Upper  
 43 100  
 86 0.0 8.1 12.1#





#33  
 1,2-Dichloroethane-d4  
 Concen: 64.658 ug/l  
 RT: 5.958 min Scan# 799  
 Delta R.T. -0.006 min  
 Lab File: VX047337.D  
 Acq: 14 Aug 2025 11:05

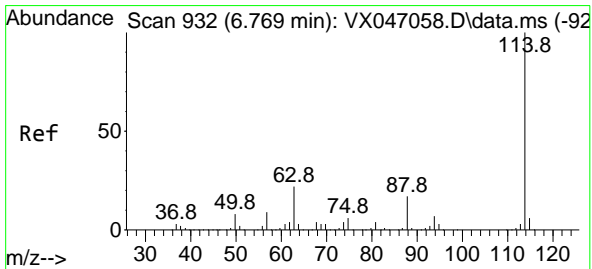
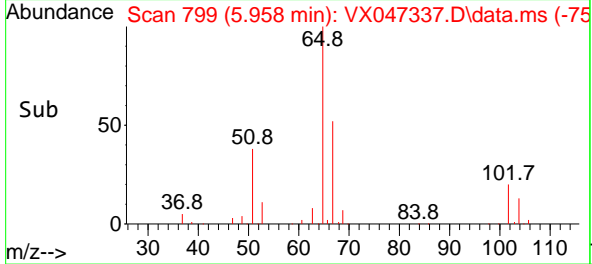
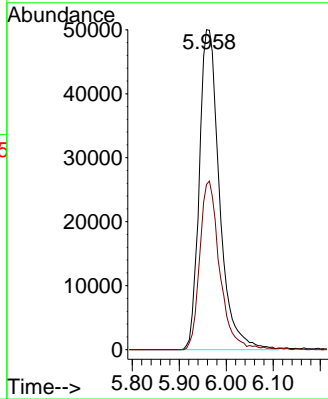
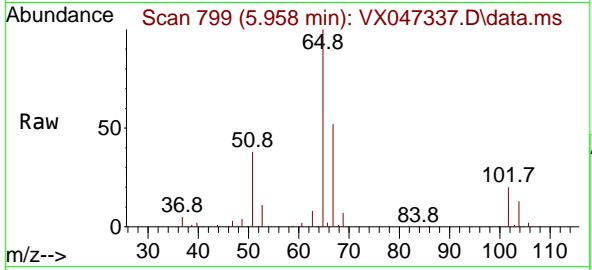
Instrument :

MSVOA\_X

ClientSampleId :

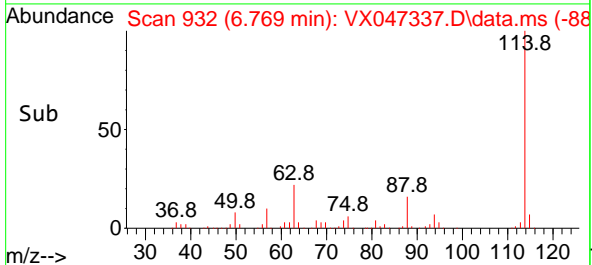
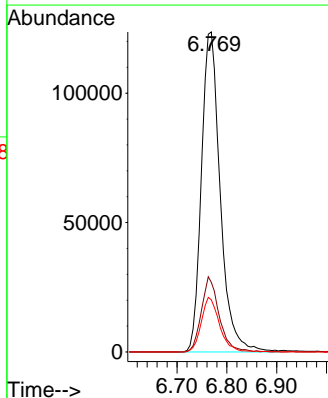
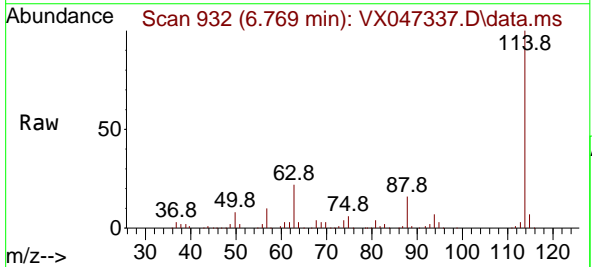
VX0814MBL01

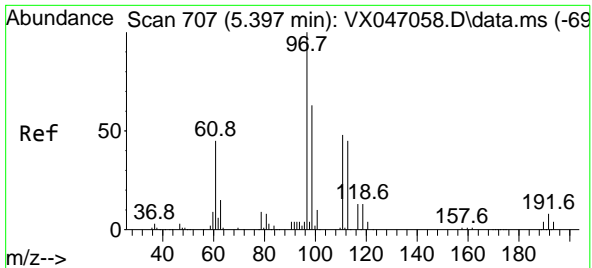
Tgt Ion: 65 Resp: 149205  
 Ion Ratio Lower Upper  
 65 100  
 67 52.2 0.0 104.8



#34  
 1,4-Difluorobenzene  
 Concen: 50.000 ug/l  
 RT: 6.769 min Scan# 932  
 Delta R.T. 0.000 min  
 Lab File: VX047337.D  
 Acq: 14 Aug 2025 11:05

Tgt Ion: 114 Resp: 324168  
 Ion Ratio Lower Upper  
 114 100  
 63 21.7 0.0 43.2  
 88 16.3 0.0 33.8



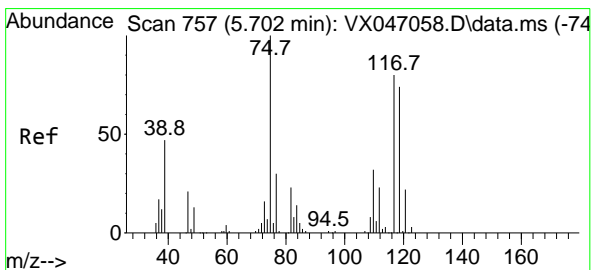
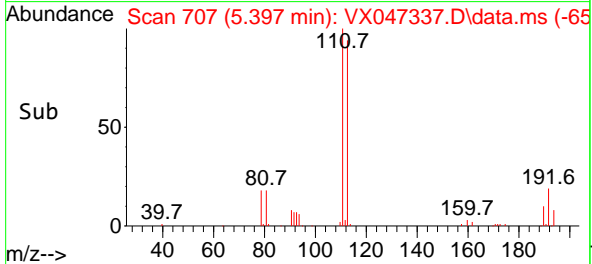
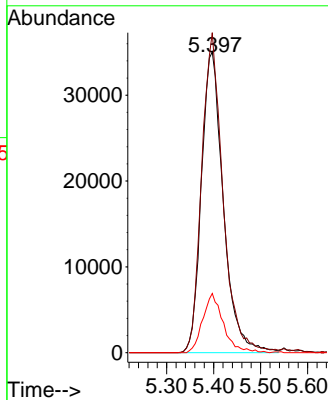
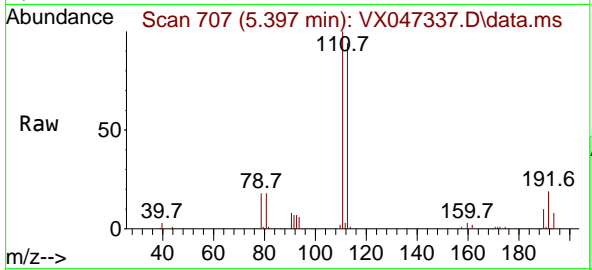


#35  
 Dibromofluoromethane  
 Concen: 56.667 ug/l  
 RT: 5.397 min Scan# 707  
 Delta R.T. 0.000 min  
 Lab File: VX047337.D  
 Acq: 14 Aug 2025 11:05

Instrument : MSVOA\_X  
 ClientSampleId : VX0814MBL01

Tgt Ion: 113 Resp: 113421

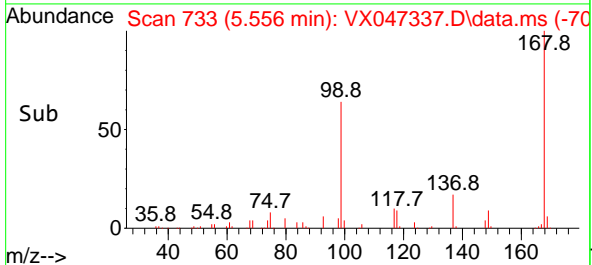
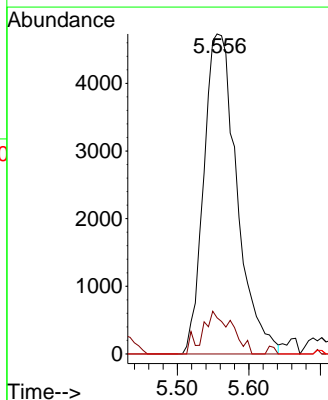
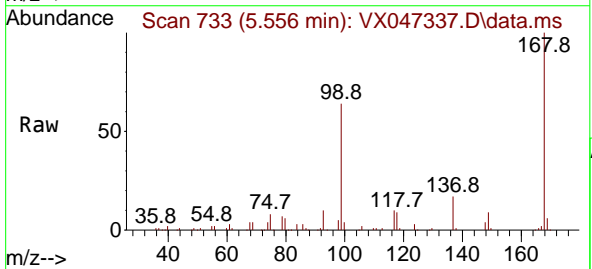
| Ion | Ratio | Lower | Upper |
|-----|-------|-------|-------|
| 113 | 100   |       |       |
| 111 | 102.9 | 82.6  | 124.0 |
| 192 | 18.5  | 14.9  | 22.3  |

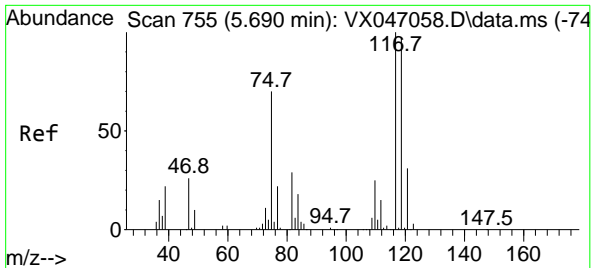


#36  
 1,1-Dichloropropene  
 Concen: 4.454 ug/l  
 RT: 5.556 min Scan# 733  
 Delta R.T. -0.146 min  
 Lab File: VX047337.D  
 Acq: 14 Aug 2025 11:05

Tgt Ion: 75 Resp: 15197

| Ion | Ratio | Lower | Upper |
|-----|-------|-------|-------|
| 75  | 100   |       |       |
| 110 | 11.8  | 17.2  | 51.5# |
| 77  | 0.0   | 25.1  | 37.7# |



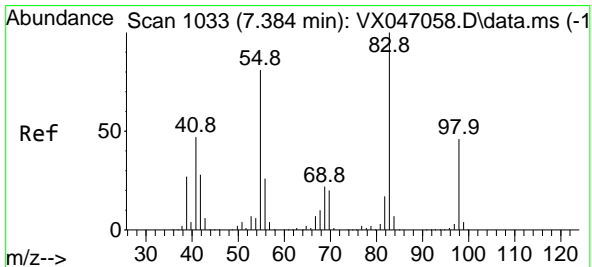
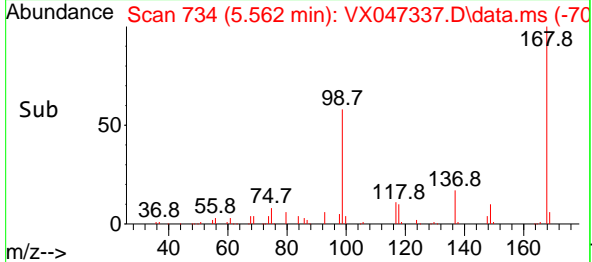
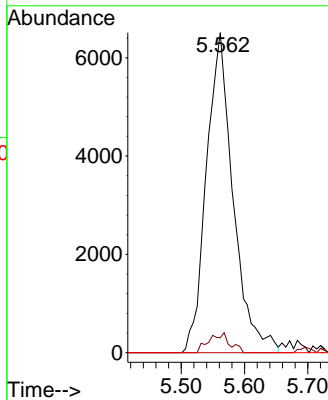
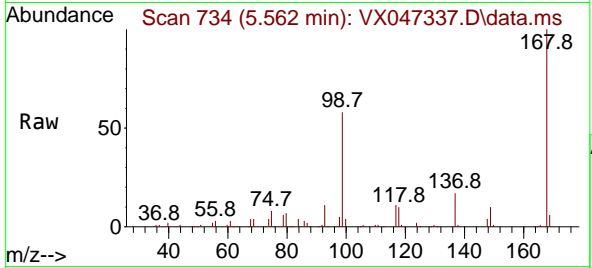


#38  
 Carbon Tetrachloride  
 Concen: 5.250 ug/l  
 RT: 5.562 min Scan# 71  
 Delta R.T. -0.128 min  
 Lab File: VX047337.D  
 Acq: 14 Aug 2025 11:05

Instrument : MSVOA\_X  
 ClientSampleId : VX0814MBL01

Tgt Ion:117 Resp: 19119

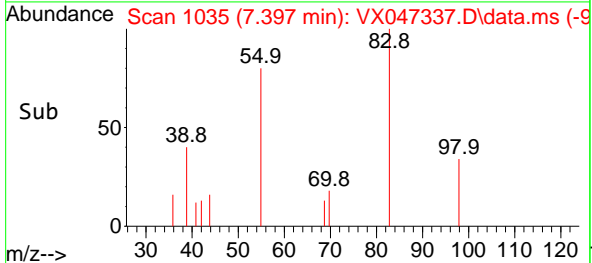
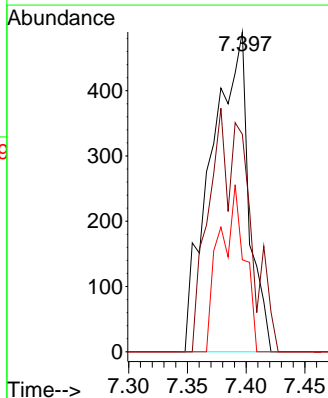
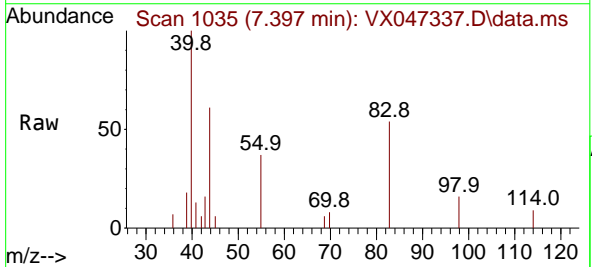
| Ion | Ratio | Lower | Upper  |
|-----|-------|-------|--------|
| 117 | 100   |       |        |
| 119 | 4.7   | 76.6  | 115.0# |
| 121 | 0.0   | 24.4  | 36.6#  |

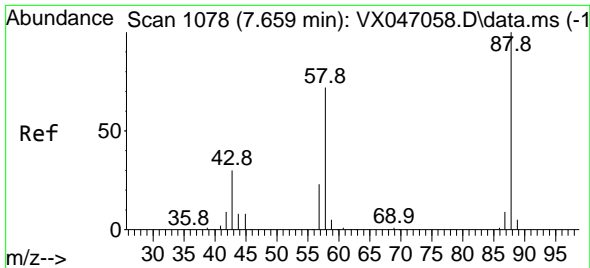


#39  
 Methylcyclohexane  
 Concen: 0.256 ug/l  
 RT: 7.397 min Scan# 1035  
 Delta R.T. 0.012 min  
 Lab File: VX047337.D  
 Acq: 14 Aug 2025 11:05

Tgt Ion: 83 Resp: 1092

| Ion | Ratio | Lower | Upper |
|-----|-------|-------|-------|
| 83  | 100   |       |       |
| 55  | 68.0  | 64.5  | 96.7  |
| 98  | 28.8  | 36.9  | 55.3# |

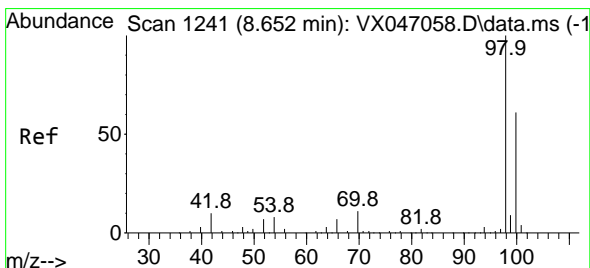
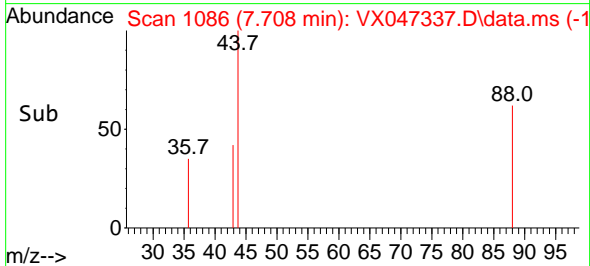
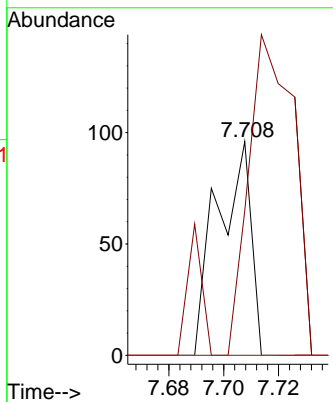
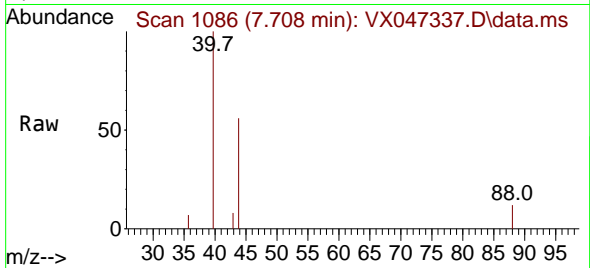




#49  
 1,4-Dioxane  
 Concen: 2.700 ug/l  
 RT: 7.708 min Scan# 1086  
 Delta R.T. 0.049 min  
 Lab File: VX047337.D  
 Acq: 14 Aug 2025 11:05

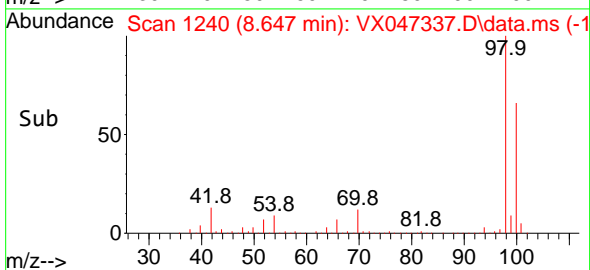
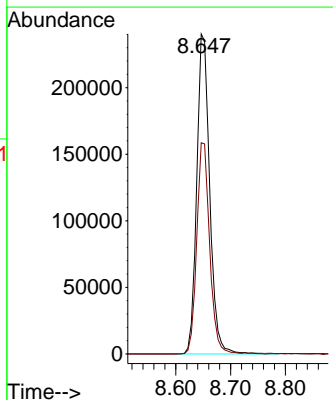
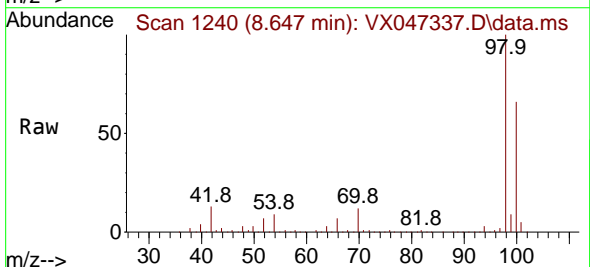
Instrument :  
 MSVOA\_X  
 ClientSampleId :  
 VX0814MBL01

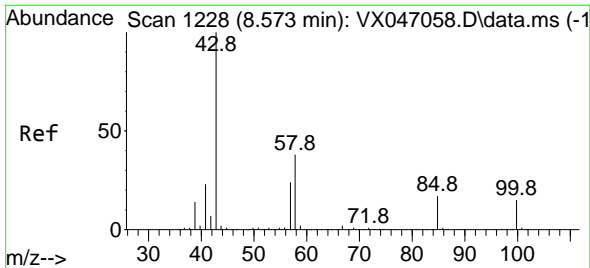
| Tgt Ion | Resp  | Lower | Upper |
|---------|-------|-------|-------|
| 88      | 100   |       |       |
| 43      | 200.0 | 33.6  | 50.4# |
| 58      | 0.0   | 58.8  | 88.2# |



#50  
 Toluene-d8  
 Concen: 61.106 ug/l  
 RT: 8.647 min Scan# 1240  
 Delta R.T. -0.006 min  
 Lab File: VX047337.D  
 Acq: 14 Aug 2025 11:05

| Tgt Ion | Resp | Lower | Upper |
|---------|------|-------|-------|
| 98      | 100  |       |       |
| 100     | 65.7 | 53.3  | 79.9  |

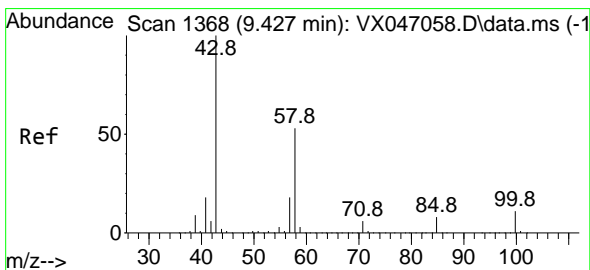
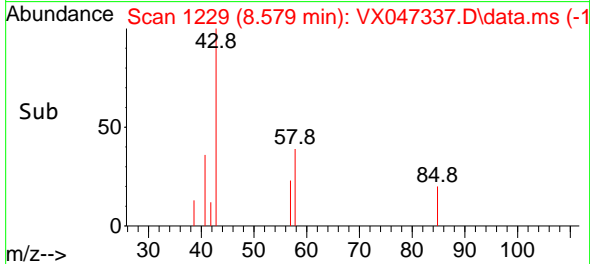
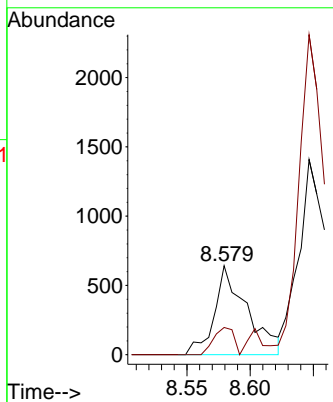
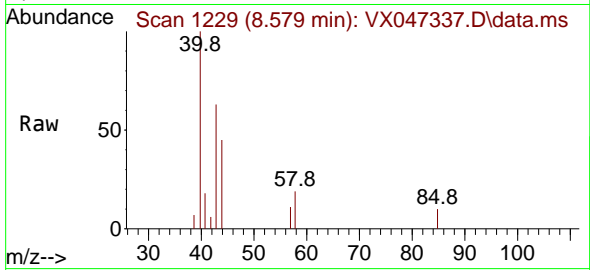




#51  
 4-Methyl-2-Pentanone  
 Concen: 0.396 ug/l  
 RT: 8.579 min Scan# 1153  
 Delta R.T. 0.006 min  
 Lab File: VX047337.D  
 Acq: 14 Aug 2025 11:05

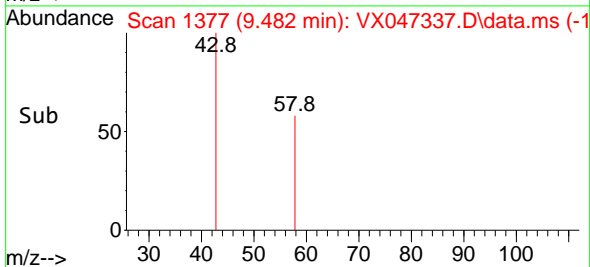
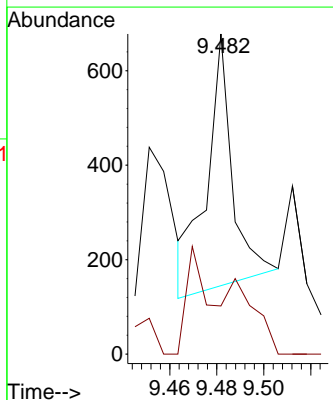
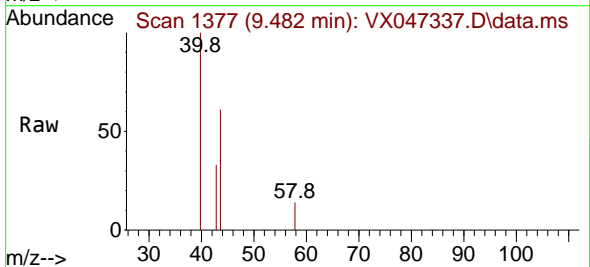
Instrument : MSVOA\_X  
 ClientSampleId : VX0814MBL01

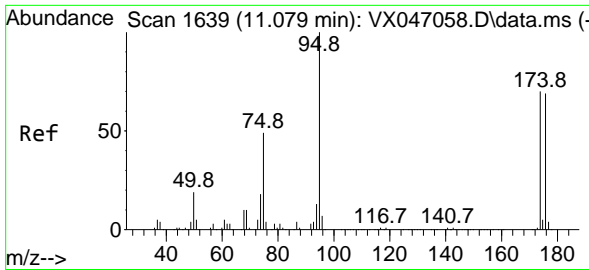
Tgt Ion: 43 Resp: 1153  
 Ion Ratio Lower Upper  
 43 100  
 58 18.6 30.6 45.8#



#59  
 2-Hexanone  
 Concen: 0.210 ug/l  
 RT: 9.482 min Scan# 1377  
 Delta R.T. 0.055 min  
 Lab File: VX047337.D  
 Acq: 14 Aug 2025 11:05

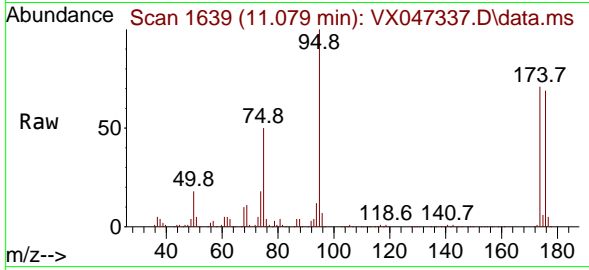
Tgt Ion: 43 Resp: 404  
 Ion Ratio Lower Upper  
 43 100  
 58 39.4 26.5 79.5



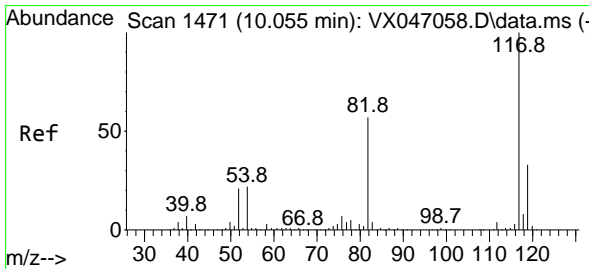
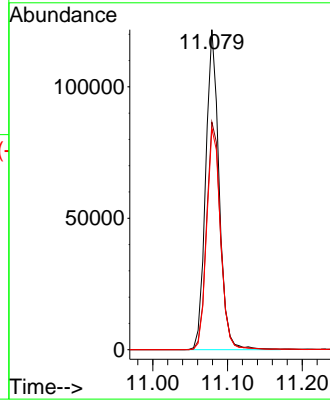
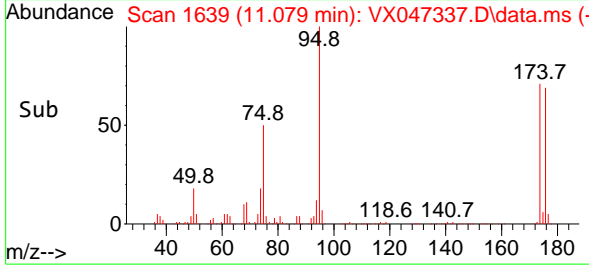


#62  
 4-Bromofluorobenzene  
 Concen: 54.191 ug/l  
 RT: 11.079 min Scan# 1639  
 Delta R.T. 0.000 min  
 Lab File: VX047337.D  
 Acq: 14 Aug 2025 11:05

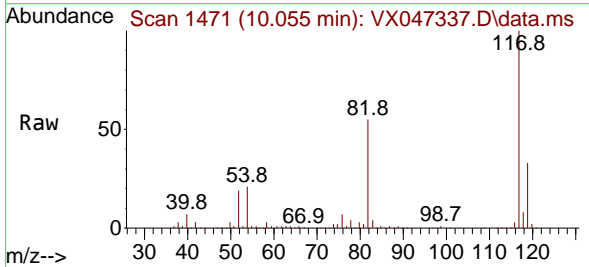
Instrument :  
 MSVOA\_X  
 ClientSampleId :  
 VX0814MBL01



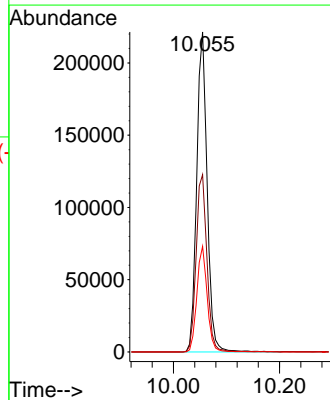
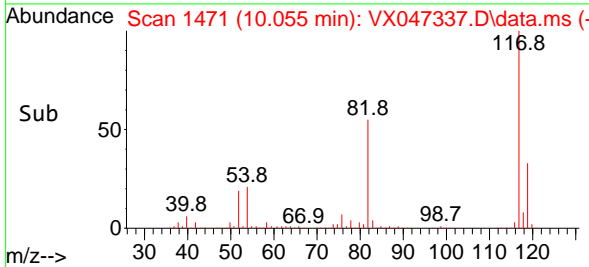
Tgt Ion: 95 Resp: 151374  
 Ion Ratio Lower Upper  
 95 100  
 174 74.2 0.0 144.6  
 176 71.7 0.0 139.6



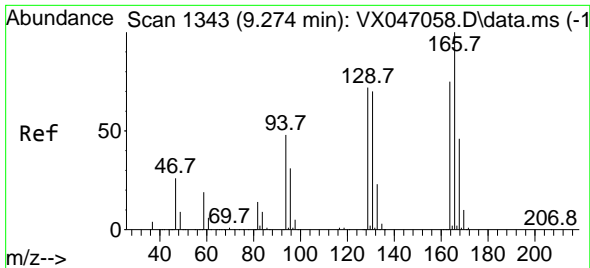
#63  
 Chlorobenzene-d5  
 Concen: 50.000 ug/l  
 RT: 10.055 min Scan# 1471  
 Delta R.T. 0.000 min  
 Lab File: VX047337.D  
 Acq: 14 Aug 2025 11:05



Tgt Ion: 117 Resp: 301702  
 Ion Ratio Lower Upper  
 117 100  
 82 55.4 45.4 68.2  
 119 33.0 26.1 39.1

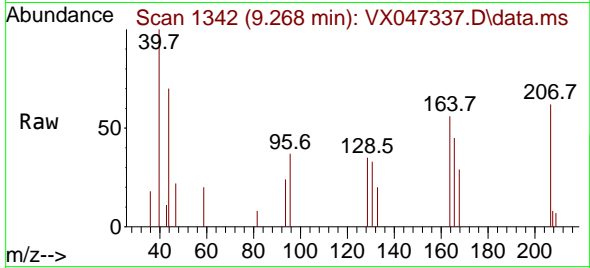






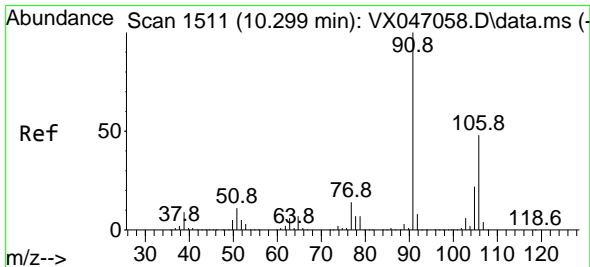
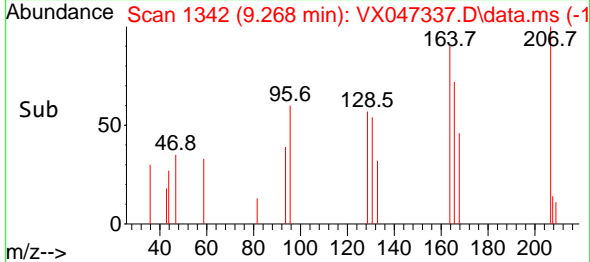
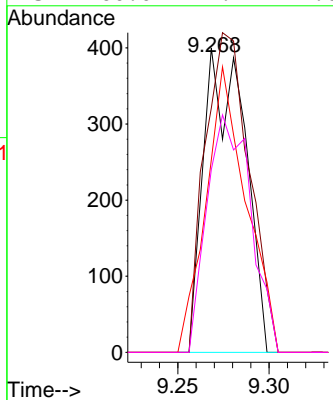
#64  
 Tetrachloroethene  
 Concen: 0.288 ug/l  
 RT: 9.268 min Scan# 11  
 Delta R.T. -0.006 min  
 Lab File: VX047337.D  
 Acq: 14 Aug 2025 11:05

Instrument :  
 MSVOA\_X  
 ClientSampleId :  
 VX0814MBL01



Tgt Ion:164 Resp: 626

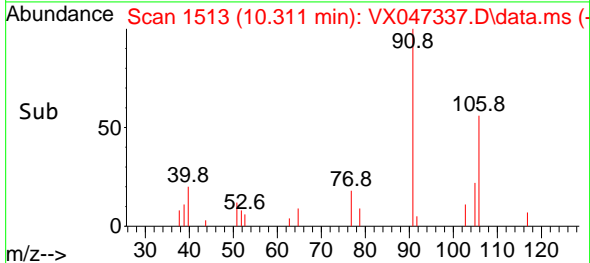
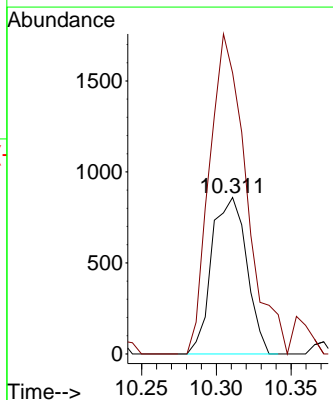
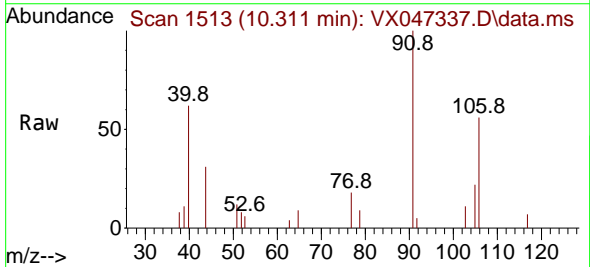
| Ion | Ratio | Lower | Upper  |
|-----|-------|-------|--------|
| 164 | 100   |       |        |
| 166 | 80.3  | 106.2 | 159.4# |
| 129 | 63.2  | 76.6  | 114.8# |
| 131 | 60.0  | 74.4  | 111.6# |

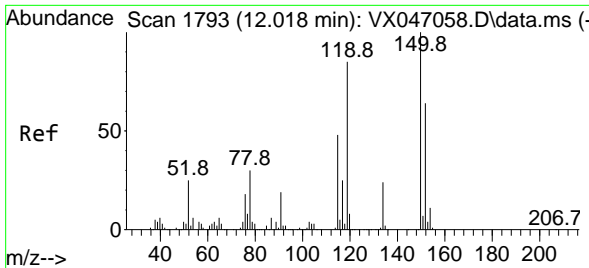


#68  
 m/p-Xylenes  
 Concen: 0.301 ug/l  
 RT: 10.311 min Scan# 1513  
 Delta R.T. 0.012 min  
 Lab File: VX047337.D  
 Acq: 14 Aug 2025 11:05

Tgt Ion:106 Resp: 1394

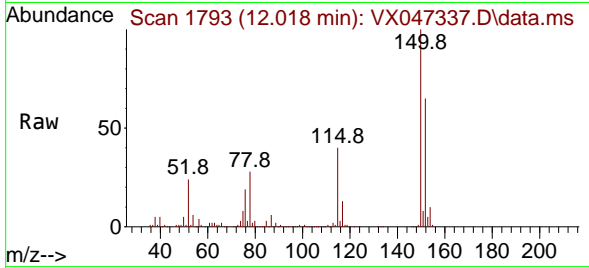
| Ion | Ratio | Lower | Upper |
|-----|-------|-------|-------|
| 106 | 100   |       |       |
| 91  | 215.9 | 167.4 | 251.0 |



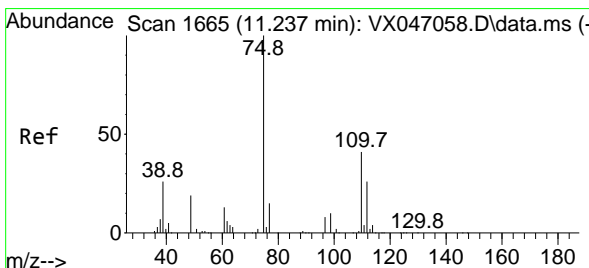
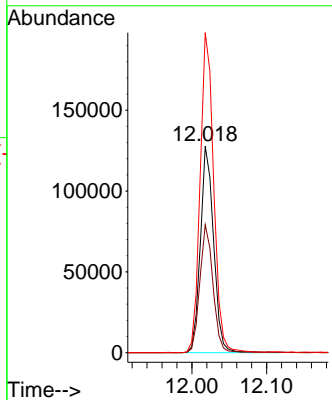
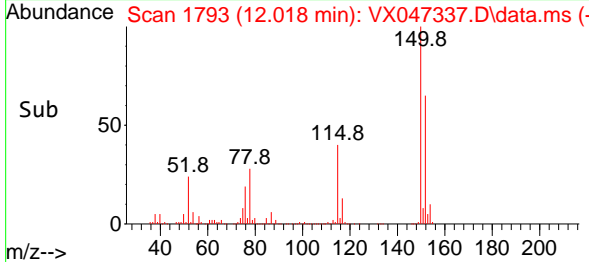


#72  
 1,4-Dichlorobenzene-d4  
 Concen: 50.000 ug/l  
 RT: 12.018 min Scan# 1  
 Delta R.T. 0.000 min  
 Lab File: VX047337.D  
 Acq: 14 Aug 2025 11:05

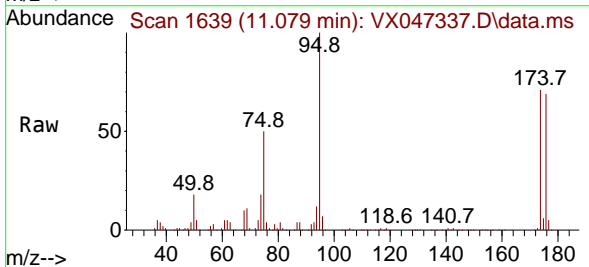
Instrument :  
 MSVOA\_X  
 ClientSampleId :  
 VX0814MBL01



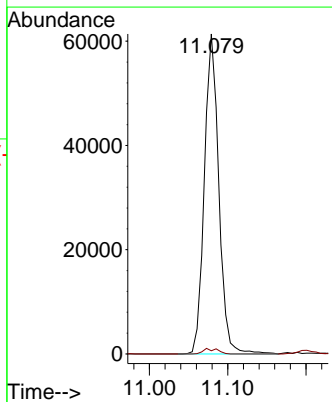
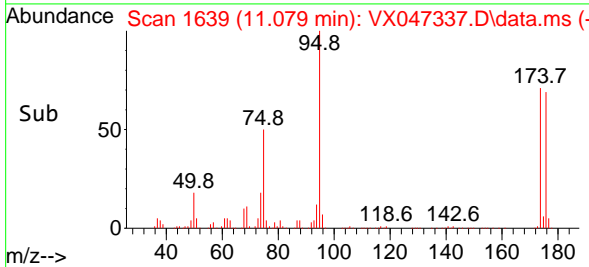
Tgt Ion:152 Resp: 157404  
 Ion Ratio Lower Upper  
 152 100  
 115 61.5 45.6 136.7  
 150 157.9 0.0 354.6

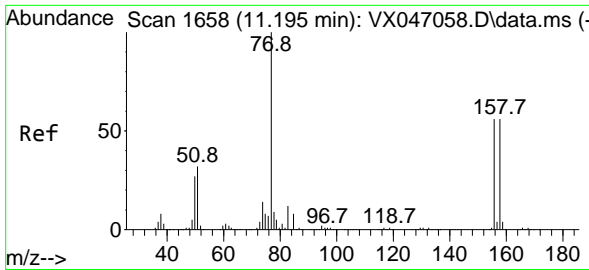


#76  
 1,2,3-Trichloropropane  
 Concen: 26.893 ug/l  
 RT: 11.079 min Scan# 1639  
 Delta R.T. -0.158 min  
 Lab File: VX047337.D  
 Acq: 14 Aug 2025 11:05



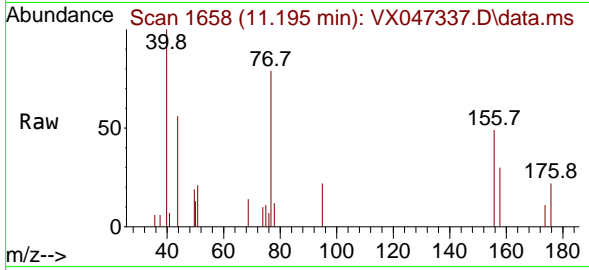
Tgt Ion: 75 Resp: 78352  
 Ion Ratio Lower Upper  
 75 100  
 77 1.7 21.6 65.0#





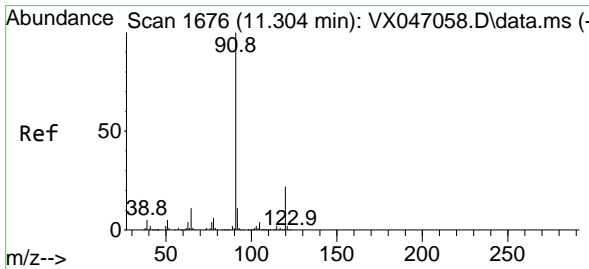
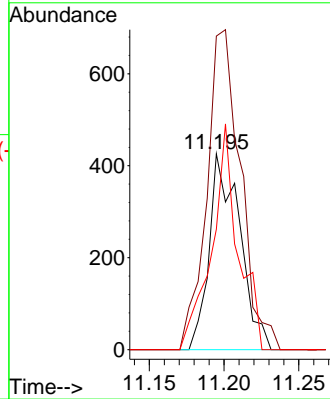
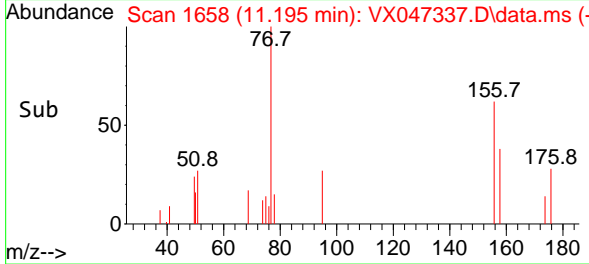
#77  
 Bromobenzene  
 Concen: 0.203 ug/l  
 RT: 11.195 min Scan# 1658  
 Delta R.T. 0.000 min  
 Lab File: VX047337.D  
 Acq: 14 Aug 2025 11:05

Instrument : MSVOA\_X  
 ClientSampleId : VX0814MBL01

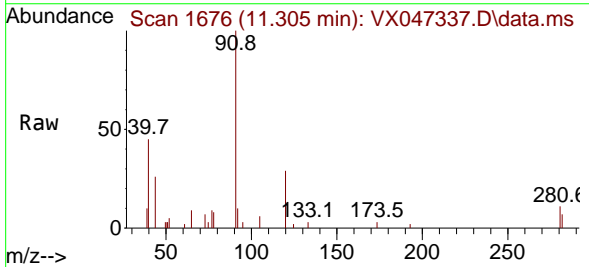


Tgt Ion: 156 Resp: 605

| Ion | Ratio | Lower | Upper |
|-----|-------|-------|-------|
| 156 | 100   |       |       |
| 77  | 180.5 | 87.3  | 261.9 |
| 158 | 99.3  | 48.9  | 146.6 |

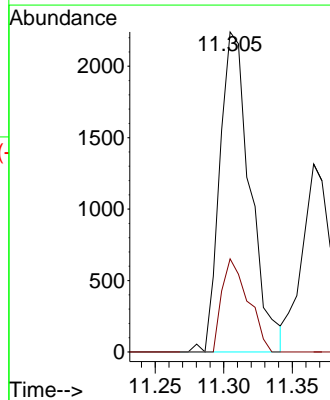
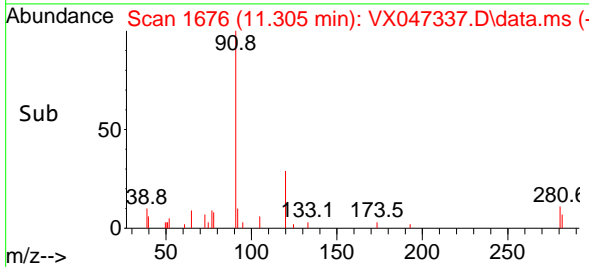


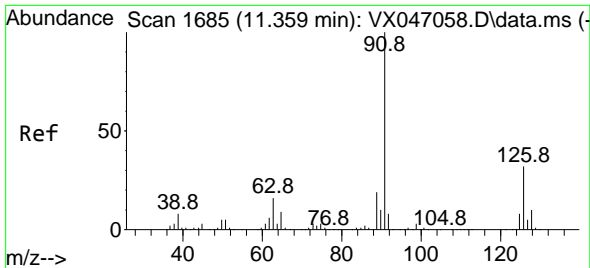
#78  
 n-propylbenzene  
 Concen: 0.234 ug/l  
 RT: 11.305 min Scan# 1676  
 Delta R.T. 0.000 min  
 Lab File: VX047337.D  
 Acq: 14 Aug 2025 11:05



Tgt Ion: 91 Resp: 3475

| Ion | Ratio | Lower | Upper |
|-----|-------|-------|-------|
| 91  | 100   |       |       |
| 120 | 25.1  | 11.0  | 33.0  |

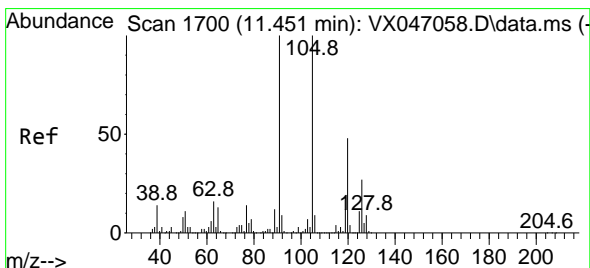
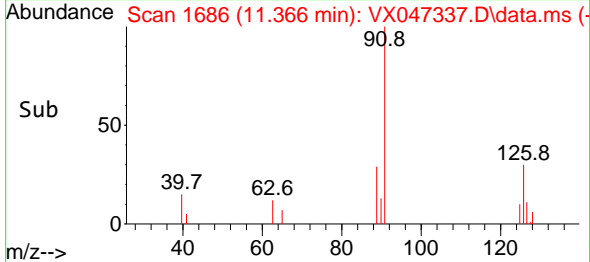
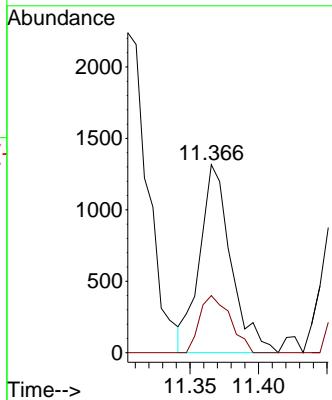
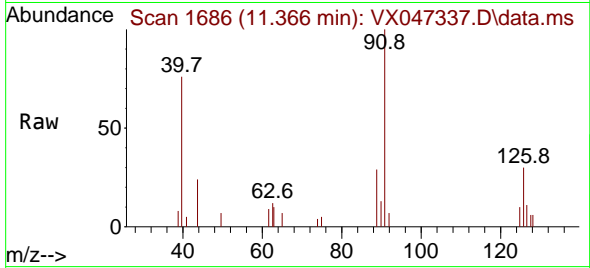




#79  
 2-Chlorotoluene  
 Concen: 0.236 ug/l  
 RT: 11.366 min Scan# 1  
 Delta R.T. 0.006 min  
 Lab File: VX047337.D  
 Acq: 14 Aug 2025 11:05

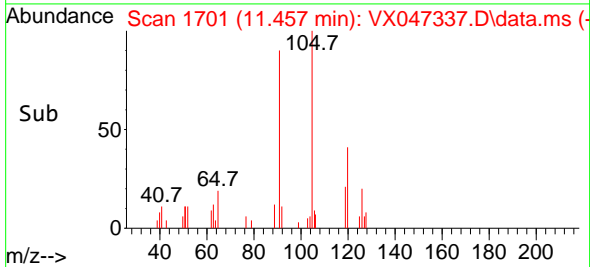
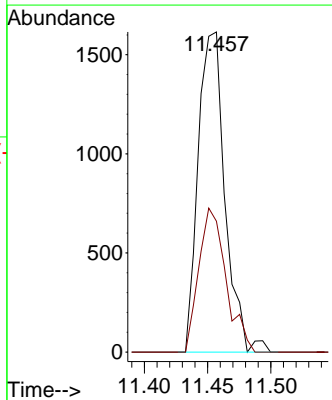
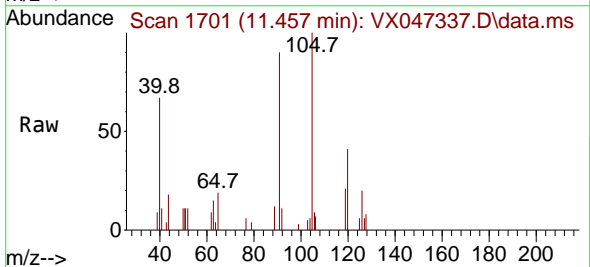
Instrument :  
 MSVOA\_X  
 ClientSampleId :  
 VX0814MBL01

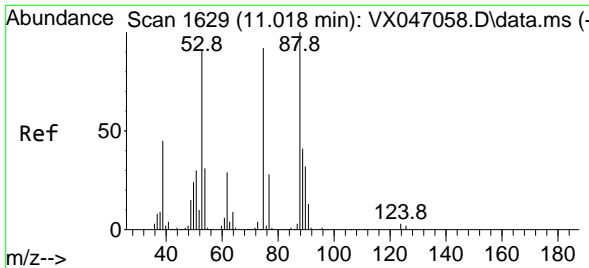
Tgt Ion: 91 Resp: 2092  
 Ion Ratio Lower Upper  
 91 100  
 126 29.7 16.4 49.4



#80  
 1,3,5-Trimethylbenzene  
 Concen: 0.232 ug/l  
 RT: 11.457 min Scan# 1701  
 Delta R.T. 0.006 min  
 Lab File: VX047337.D  
 Acq: 14 Aug 2025 11:05

Tgt Ion: 105 Resp: 2383  
 Ion Ratio Lower Upper  
 105 100  
 120 45.7 23.8 71.5

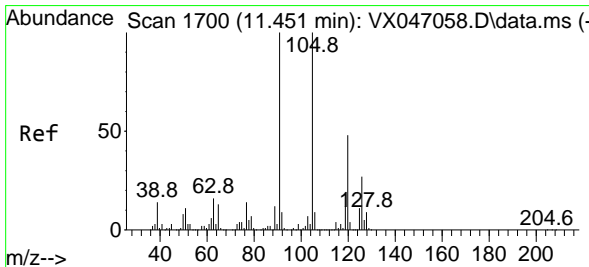
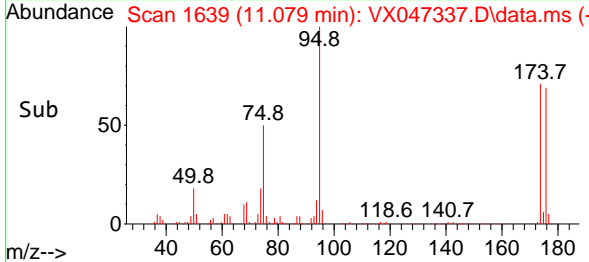
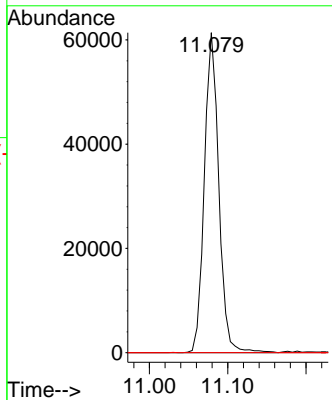
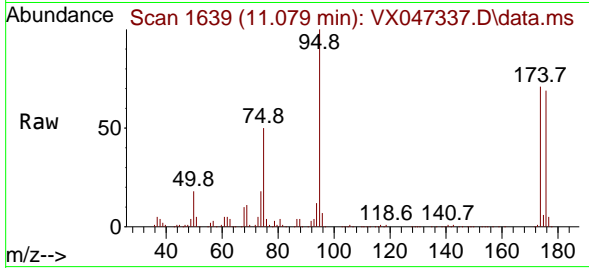




#81  
 trans-1,4-Dichloro-2-butene  
 Concen: 69.287 ug/l  
 RT: 11.079 min Scan# 1102  
 Delta R.T. 0.061 min  
 Lab File: VX047337.D  
 Acq: 14 Aug 2025 11:05

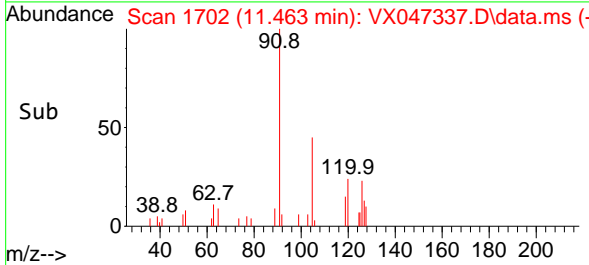
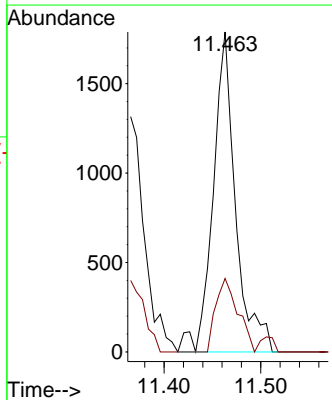
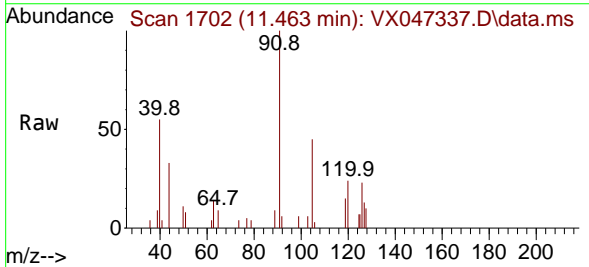
Instrument : MSVOA\_X  
 ClientSampleId : VX0814MBL01

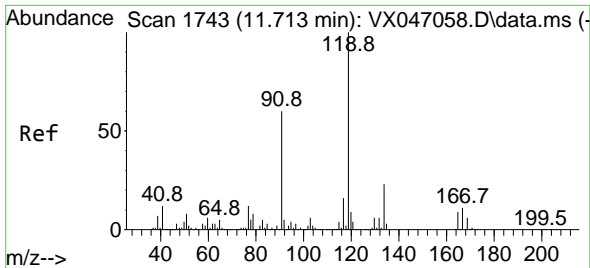
Tgt Ion: 75 Resp: 78352  
 Ion Ratio Lower Upper  
 75 100  
 53 0.0 84.2 126.4#  
 89 0.0 36.0 54.0#



#82  
 4-Chlorotoluene  
 Concen: 0.279 ug/l  
 RT: 11.463 min Scan# 1702  
 Delta R.T. 0.012 min  
 Lab File: VX047337.D  
 Acq: 14 Aug 2025 11:05

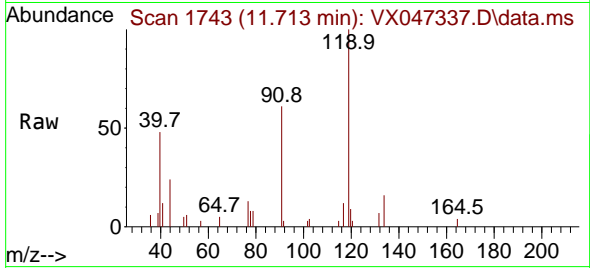
Tgt Ion: 91 Resp: 2888  
 Ion Ratio Lower Upper  
 91 100  
 126 22.6 14.1 42.3





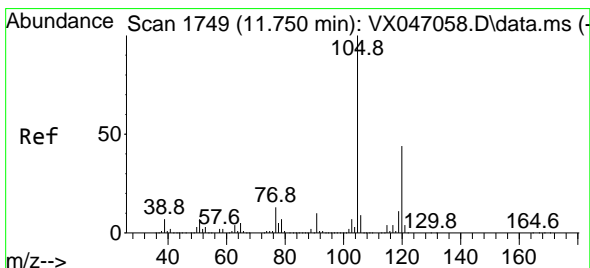
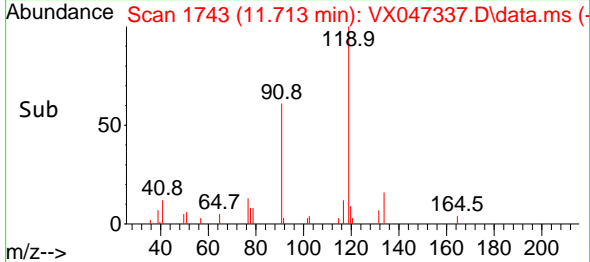
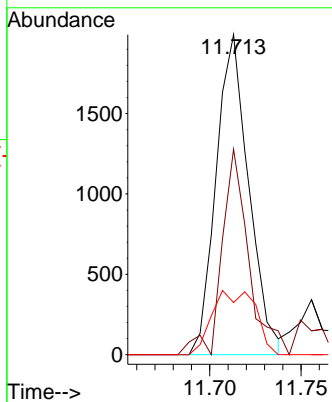
#83  
 tert-Butylbenzene  
 Concen: 0.240 ug/l  
 RT: 11.713 min Scan# 1743  
 Delta R.T. 0.000 min  
 Lab File: VX047337.D  
 Acq: 14 Aug 2025 11:05

Instrument : MSVOA\_X  
 ClientSampleId : VX0814MBL01



Tgt Ion:119 Resp: 2475

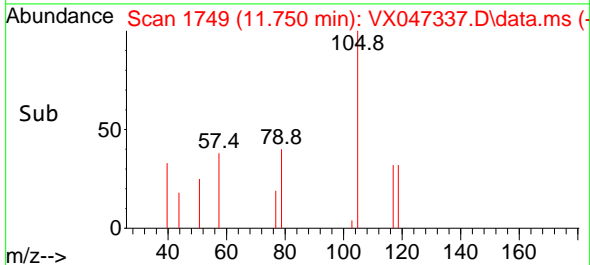
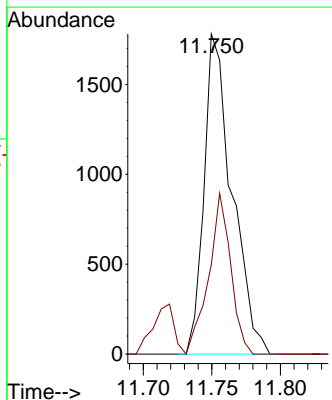
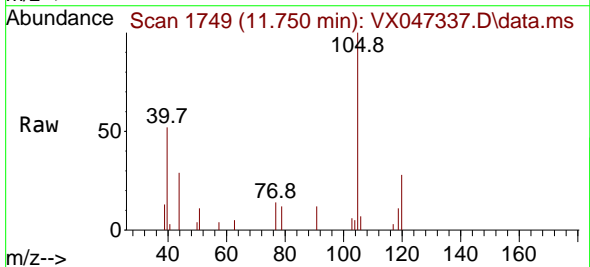
| Ion | Ratio | Lower | Upper |
|-----|-------|-------|-------|
| 119 | 100   |       |       |
| 91  | 52.5  | 29.6  | 88.8  |
| 134 | 26.5  | 11.4  | 34.1  |

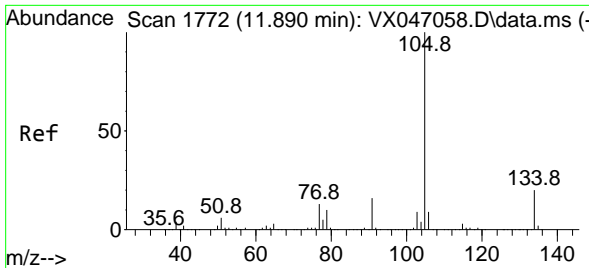


#84  
 1,2,4-Trimethylbenzene  
 Concen: 0.247 ug/l  
 RT: 11.750 min Scan# 1749  
 Delta R.T. 0.000 min  
 Lab File: VX047337.D  
 Acq: 14 Aug 2025 11:05

Tgt Ion:105 Resp: 2523

| Ion | Ratio | Lower | Upper |
|-----|-------|-------|-------|
| 105 | 100   |       |       |
| 120 | 39.5  | 22.0  | 66.0  |

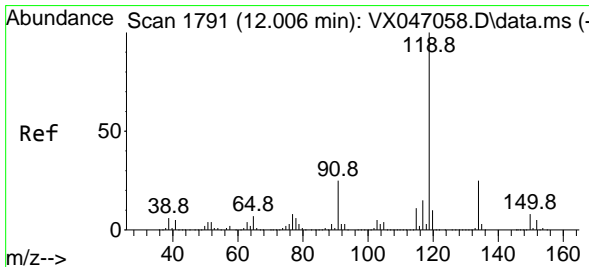
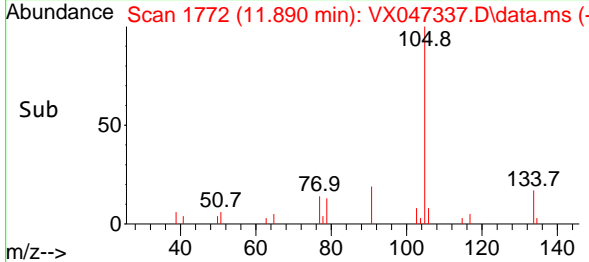
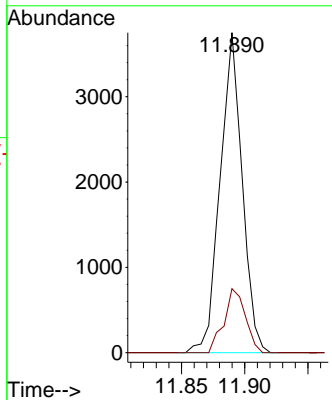
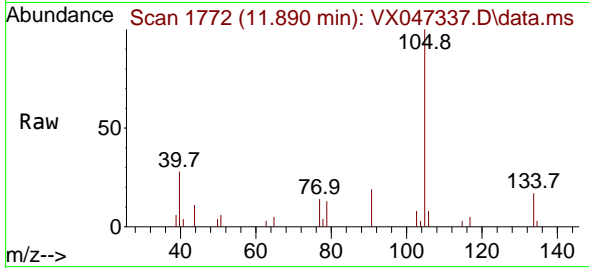




#85  
 sec-Butylbenzene  
 Concen: 0.353 ug/l  
 RT: 11.890 min Scan# 1792  
 Delta R.T. 0.000 min  
 Lab File: VX047337.D  
 Acq: 14 Aug 2025 11:05

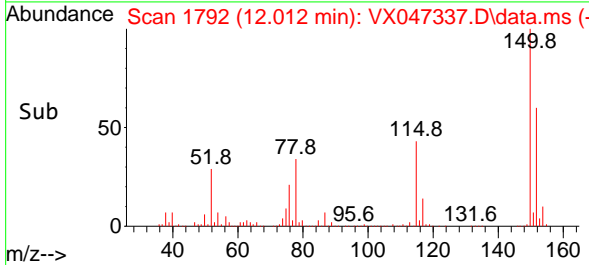
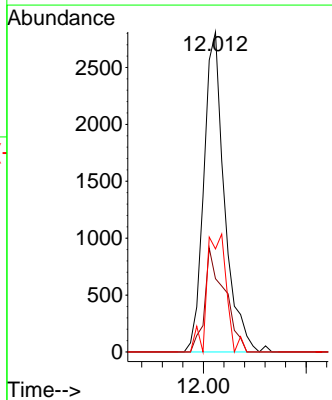
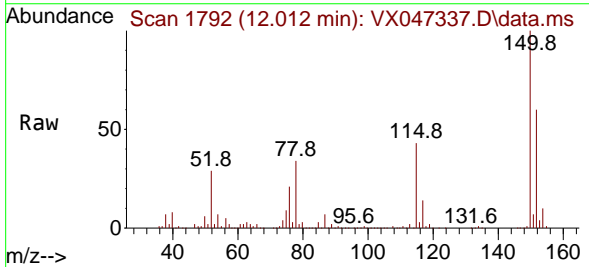
Instrument :  
 MSVOA\_X  
 ClientSampleId :  
 VX0814MBL01

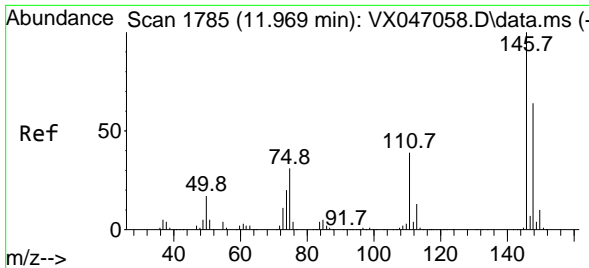
Tgt Ion:105 Resp: 4544  
 Ion Ratio Lower Upper  
 105 100  
 134 19.3 9.9 29.7



#86  
 p-Isopropyltoluene  
 Concen: 0.368 ug/l  
 RT: 12.012 min Scan# 1792  
 Delta R.T. 0.006 min  
 Lab File: VX047337.D  
 Acq: 14 Aug 2025 11:05

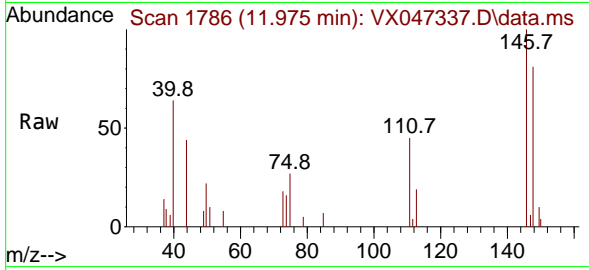
Tgt Ion:119 Resp: 3928  
 Ion Ratio Lower Upper  
 119 100  
 134 31.1 12.8 38.4  
 91 34.9 12.4 37.4



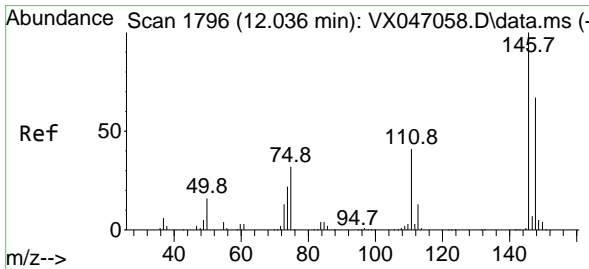
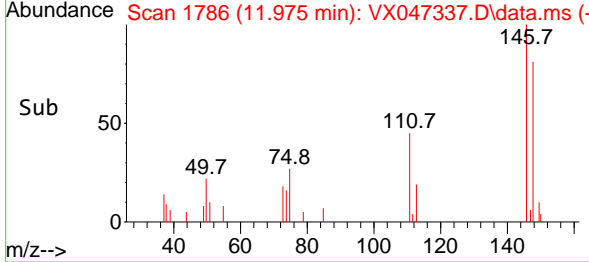
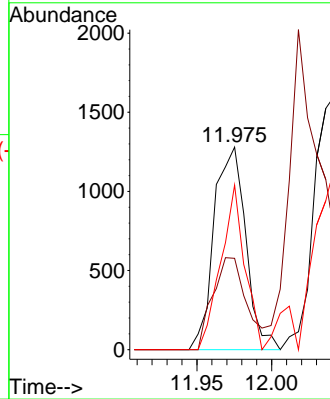


#87  
 1,3-Dichlorobenzene  
 Concen: 0.333 ug/l  
 RT: 11.975 min Scan# 1786  
 Delta R.T. 0.006 min  
 Lab File: VX047337.D  
 Acq: 14 Aug 2025 11:05

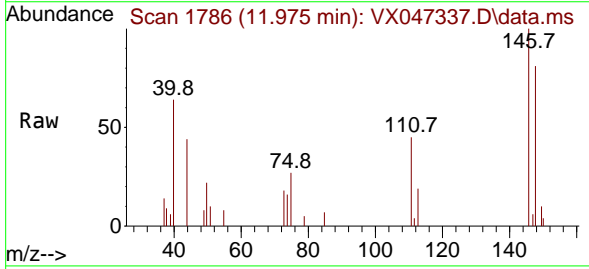
Instrument :  
 MSVOA\_X  
 ClientSampleId :  
 VX0814MBL01



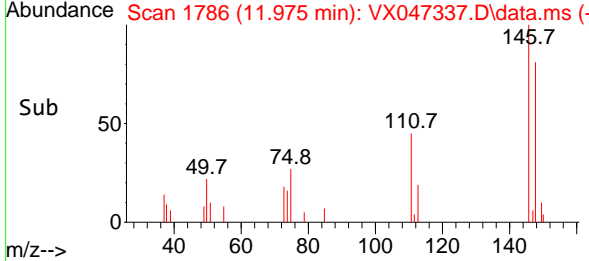
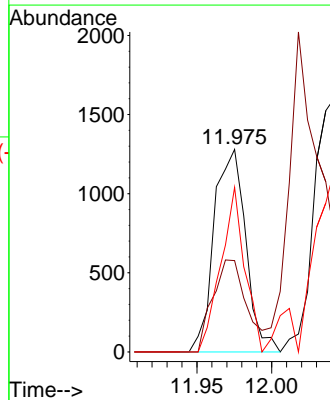
Tgt Ion:146 Resp: 1886  
 Ion Ratio Lower Upper  
 146 100  
 111 48.3 21.0 63.0  
 148 61.6 32.0 96.0



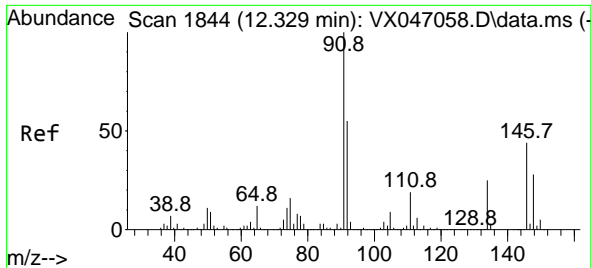
#88  
 1,4-Dichlorobenzene  
 Concen: 0.329 ug/l  
 RT: 11.975 min Scan# 1786  
 Delta R.T. -0.061 min  
 Lab File: VX047337.D  
 Acq: 14 Aug 2025 11:05



Tgt Ion:146 Resp: 1886  
 Ion Ratio Lower Upper  
 146 100  
 111 48.3 20.6 61.9  
 148 61.6 33.0 98.9

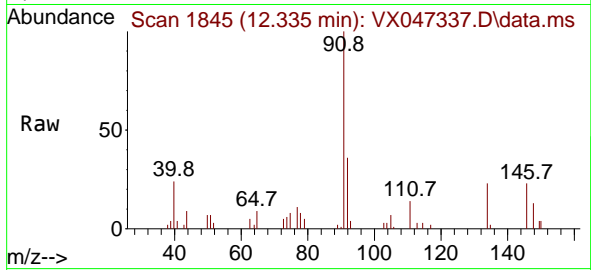






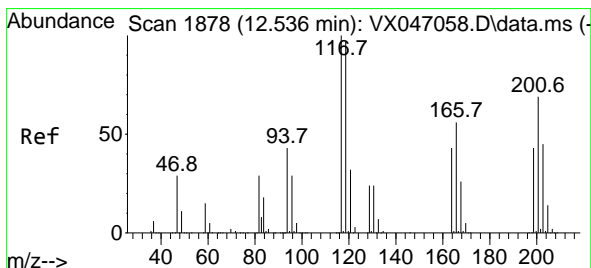
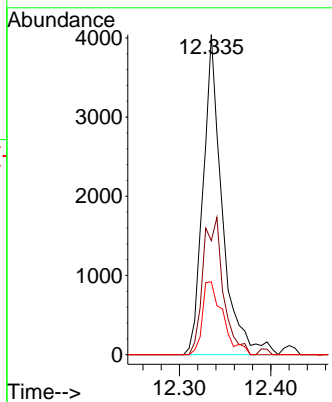
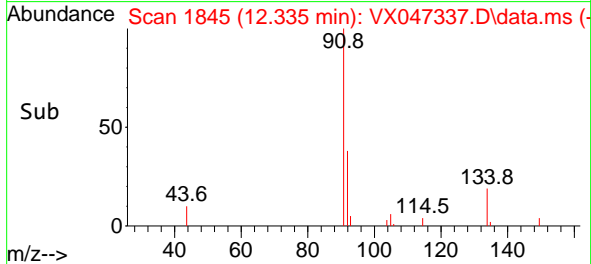
#89  
 n-Butylbenzene  
 Concen: 0.585 ug/l  
 RT: 12.335 min Scan# 1845  
 Delta R.T. 0.006 min  
 Lab File: VX047337.D  
 Acq: 14 Aug 2025 11:05

Instrument : MSVOA\_X  
 ClientSampleId : VX0814MBL01

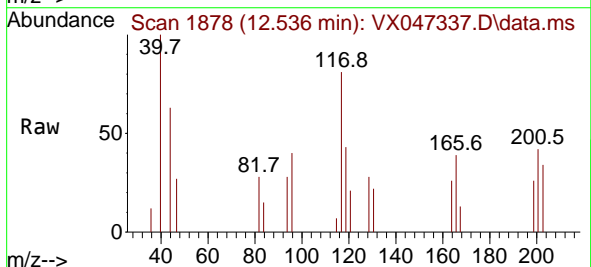


Tgt Ion: 91 Resp: 5849

| Ion | Ratio | Lower | Upper |
|-----|-------|-------|-------|
| 91  | 100   |       |       |
| 92  | 45.5  | 27.5  | 82.5  |
| 134 | 24.5  | 12.8  | 38.3  |

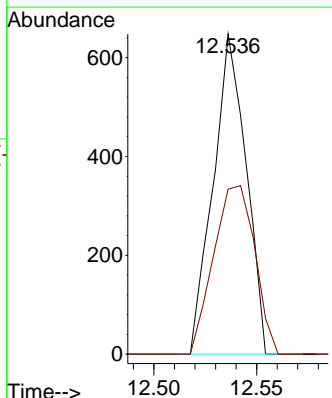
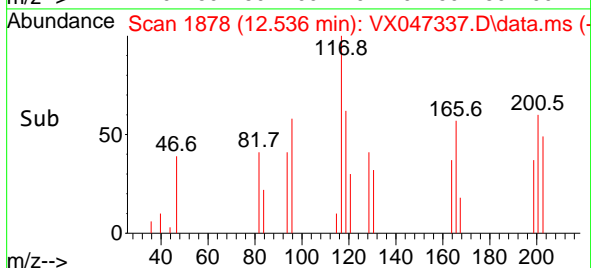


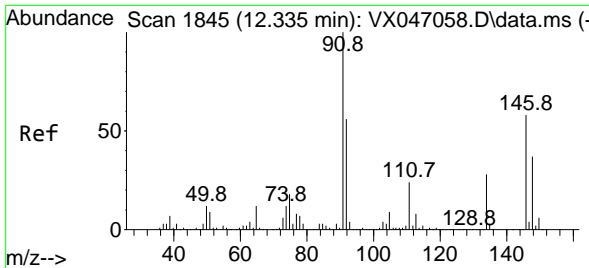
#90  
 Hexachloroethane  
 Concen: 0.377 ug/l  
 RT: 12.536 min Scan# 1878  
 Delta R.T. 0.000 min  
 Lab File: VX047337.D  
 Acq: 14 Aug 2025 11:05



Tgt Ion: 117 Resp: 719

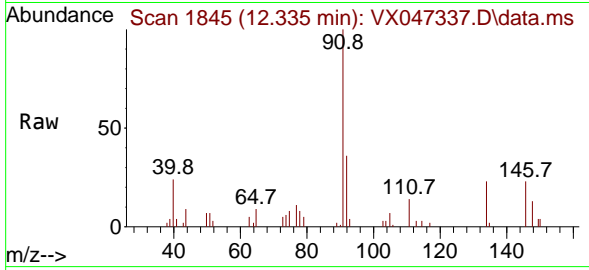
| Ion | Ratio | Lower | Upper |
|-----|-------|-------|-------|
| 117 | 100   |       |       |
| 201 | 66.2  | 34.8  | 104.5 |





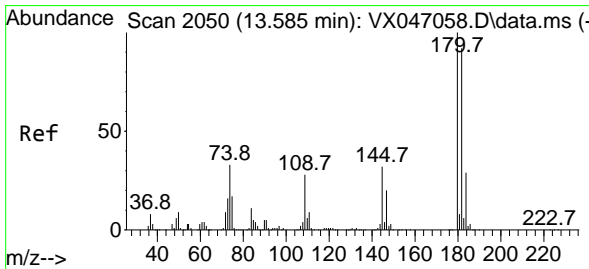
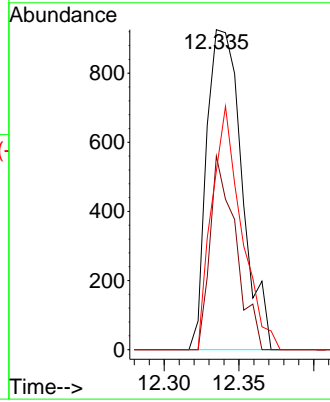
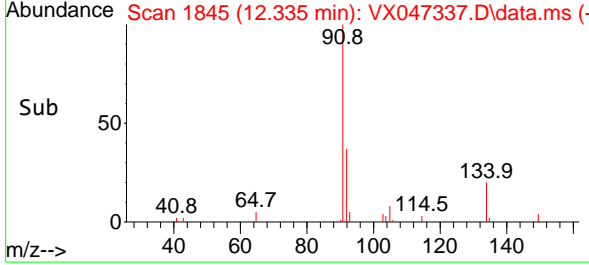
#91  
 1,2-Dichlorobenzene  
 Concen: 0.280 ug/l  
 RT: 12.335 min Scan# 1845  
 Delta R.T. 0.000 min  
 Lab File: VX047337.D  
 Acq: 14 Aug 2025 11:05

Instrument : MSVOA\_X  
 ClientSampleId : VX0814MBL01

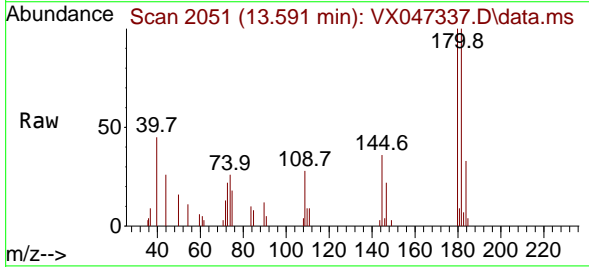


Tgt Ion:146 Resp: 1514

| Ion | Ratio | Lower | Upper |
|-----|-------|-------|-------|
| 146 | 100   |       |       |
| 111 | 44.2  | 21.6  | 64.6  |
| 148 | 64.1  | 31.9  | 95.7  |

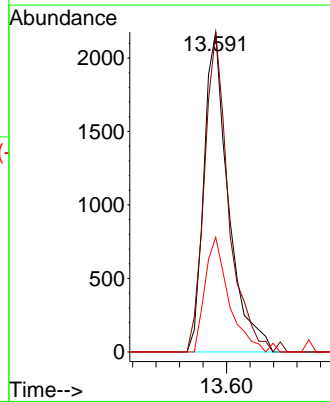
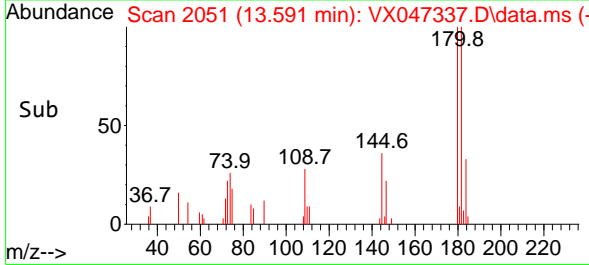


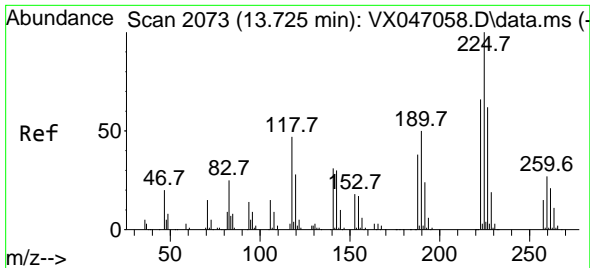
#93  
 1,2,4-Trichlorobenzene  
 Concen: 0.876 ug/l  
 RT: 13.591 min Scan# 2051  
 Delta R.T. 0.006 min  
 Lab File: VX047337.D  
 Acq: 14 Aug 2025 11:05



Tgt Ion:180 Resp: 3131

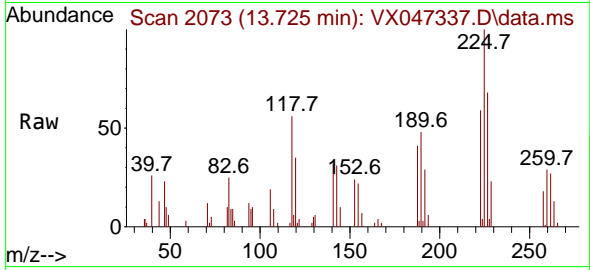
| Ion | Ratio | Lower | Upper |
|-----|-------|-------|-------|
| 180 | 100   |       |       |
| 182 | 99.7  | 47.3  | 141.8 |
| 145 | 35.7  | 16.4  | 49.1  |



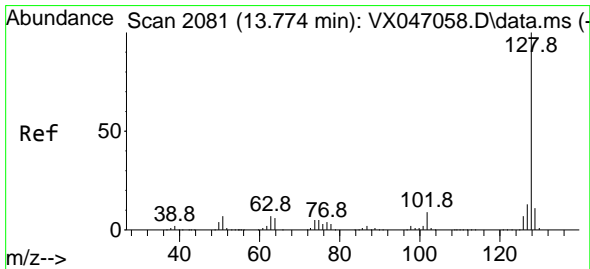
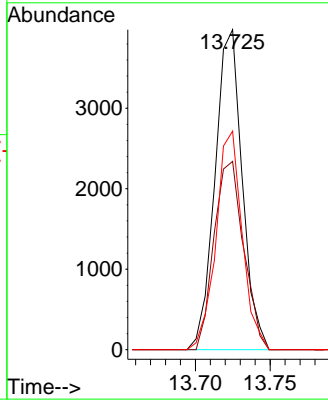
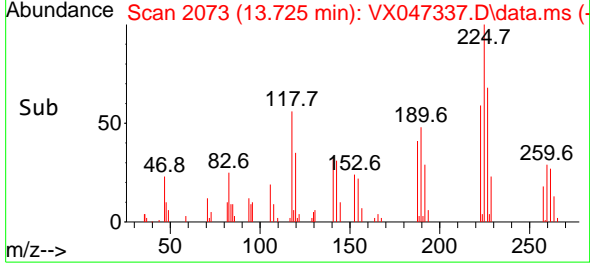


#94  
 Hexachlorobutadiene  
 Concen: 4.139 ug/l  
 RT: 13.725 min Scan# 2073  
 Delta R.T. 0.000 min  
 Lab File: VX047337.D  
 Acq: 14 Aug 2025 11:05

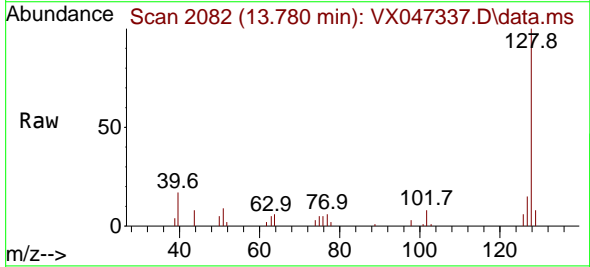
Instrument : MSVOA\_X  
 ClientSampleId : VX0814MBL01



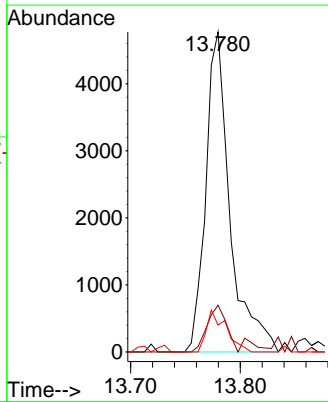
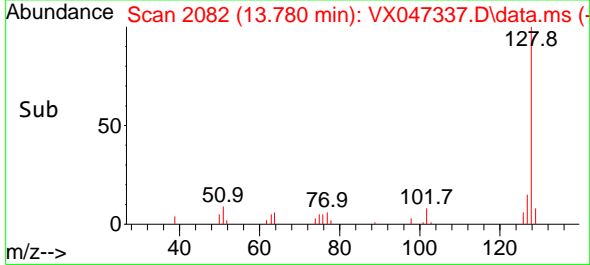
Tgt Ion:225 Resp: 5030  
 Ion Ratio Lower Upper  
 225 100  
 223 64.1 31.6 95.0  
 227 65.8 32.9 98.6

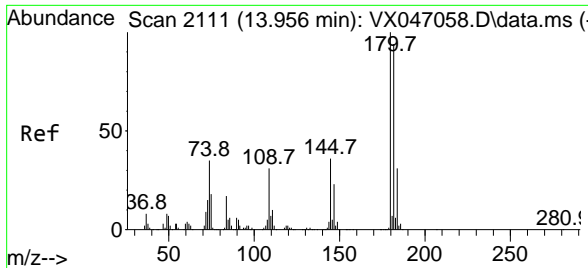


#95  
 Naphthalene  
 Concen: 0.699 ug/l  
 RT: 13.780 min Scan# 2082  
 Delta R.T. 0.006 min  
 Lab File: VX047337.D  
 Acq: 14 Aug 2025 11:05



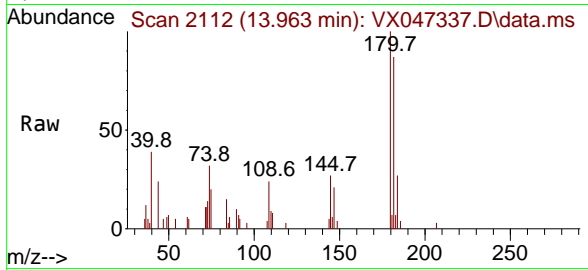
Tgt Ion:128 Resp: 7322  
 Ion Ratio Lower Upper  
 128 100  
 127 11.7 10.1 15.1  
 129 10.6 8.6 13.0





#96  
 1,2,3-Trichlorobenzene  
 Concen: 0.897 ug/l  
 RT: 13.963 min Scan# 21  
 Delta R.T. 0.006 min  
 Lab File: VX047337.D  
 Acq: 14 Aug 2025 11:05

Instrument :  
 MSVOA\_X  
 ClientSampleId :  
 VX0814MBL01



Tgt Ion:180 Resp: 3087

| Ion | Ratio | Lower | Upper |
|-----|-------|-------|-------|
| 180 | 100   |       |       |
| 182 | 100.8 | 46.9  | 140.6 |
| 145 | 29.2  | 17.3  | 52.0  |

