

Data Path : Z:\voasrv\HPCHEM1\MSVOA_X\Data\VX081425\
 Data File : VX047338.D
 Acq On : 14 Aug 2025 11:54
 Operator : JC/MD
 Sample : VX0814WBL01
 Misc : 5.0mL/MSVOA_X/WATER
 ALS Vial : 4 Sample Multiplier: 1

Instrument :
 MSVOA_X
 ClientSampleId :
 VX0814WBL01

Quant Time: Aug 18 01:27:39 2025
 Quant Method : Z:\voasrv\HPCHEM1\MSVOA_X\Method\82X072125W.M
 Quant Title : SW846 8260
 QLast Update : Tue Jul 22 03:59:51 2025
 Response via : Initial Calibration

Compound	R.T.	QIon	Response	Conc	Units	Dev(Min)

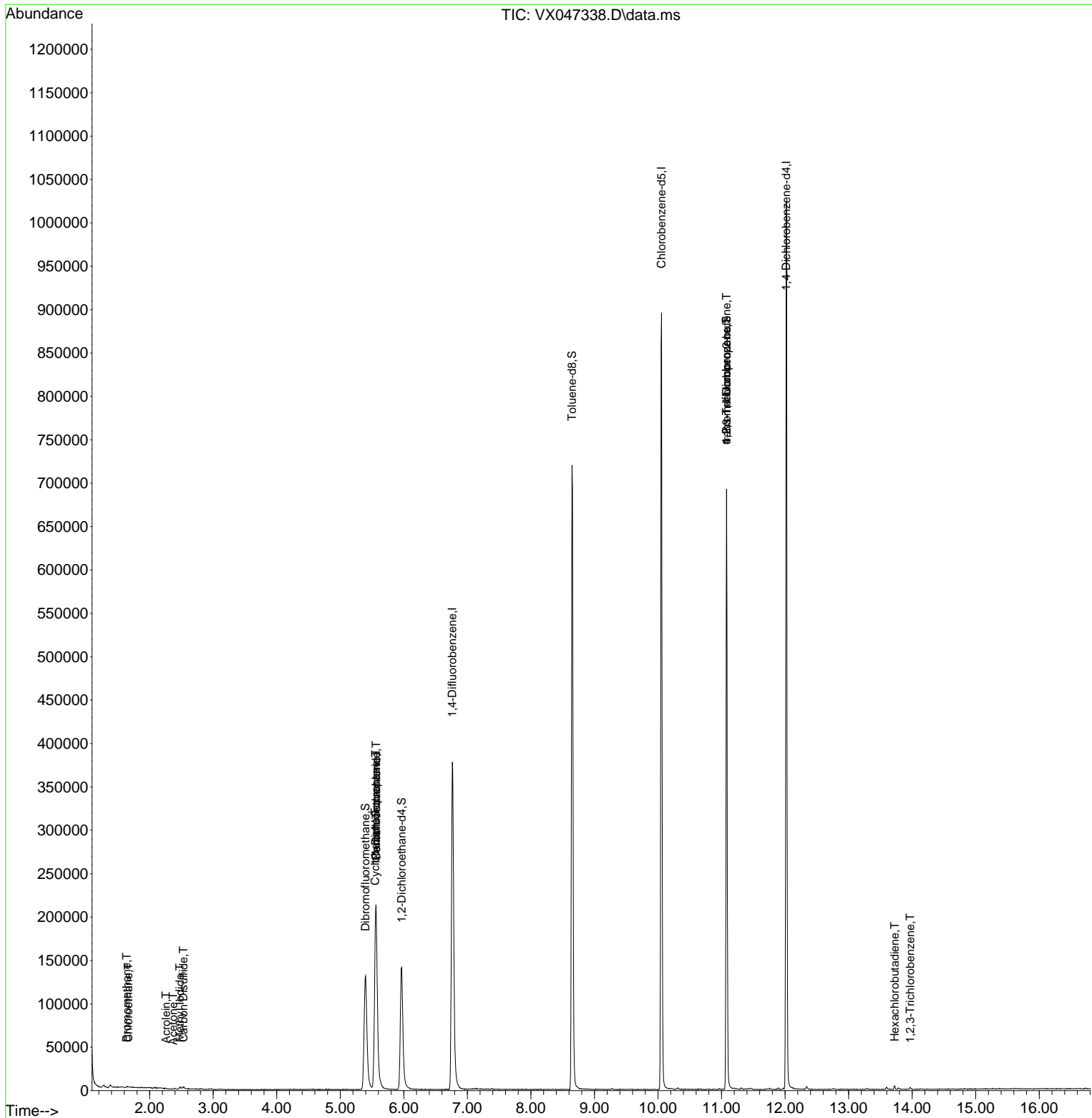
Internal Standards						
1) Pentafluorobenzene	5.562	168	213625	50.000	ug/l	0.00
34) 1,4-Difluorobenzene	6.763	114	406583	50.000	ug/l	0.00
63) Chlorobenzene-d5	10.055	117	399638	50.000	ug/l	0.00
72) 1,4-Dichlorobenzene-d4	12.018	152	203879	50.000	ug/l	0.00
System Monitoring Compounds						
33) 1,2-Dichloroethane-d4	5.964	65	151781	57.037	ug/l	0.00
Spiked Amount	50.000	Range 78 - 117	Recovery	=	114.080%	
35) Dibromofluoromethane	5.397	113	126155	50.253	ug/l	0.00
Spiked Amount	50.000	Range 75 - 124	Recovery	=	100.500%	
50) Toluene-d8	8.647	98	446363	54.905	ug/l	0.00
Spiked Amount	50.000	Range 92 - 112	Recovery	=	109.800%	
62) 4-Bromofluorobenzene	11.079	95	184977	52.798	ug/l	0.00
Spiked Amount	50.000	Range 83 - 123	Recovery	=	105.600%	
Target Compounds						
						Qvalue
5) Bromomethane	1.636	94	648	0.395	ug/l	82
6) Chloroethane	1.666	64	1068	0.539	ug/l #	43
10) Methyl Iodide	2.477	142	3437	1.244	ug/l #	90
11) Tert butyl alcohol	2.953	59	136	Below Cal	#	72
13) Acrolein	2.258	56	155	0.271	ug/l #	68
16) Acetone	2.368	43	218	0.204	ug/l #	45
17) Carbon Disulfide	2.532	76	3240	0.417	ug/l	99
31) Cyclohexane	5.550	56	4785	0.962	ug/l #	4
36) 1,1-Dichloropropene	5.556	75	17765	4.152	ug/l #	46
38) Carbon Tetrachloride	5.562	117	22138	4.847	ug/l #	16
76) 1,2,3-Trichloropropane	11.079	75	96090	25.463	ug/l #	34
81) trans-1,4-Dichloro-2-b...	11.079	75	96090	65.603	ug/l #	8
94) Hexachlorobutadiene	13.725	225	642	0.408	ug/l	96
96) 1,2,3-Trichlorobenzene	13.969	180	998	0.224	ug/l	87

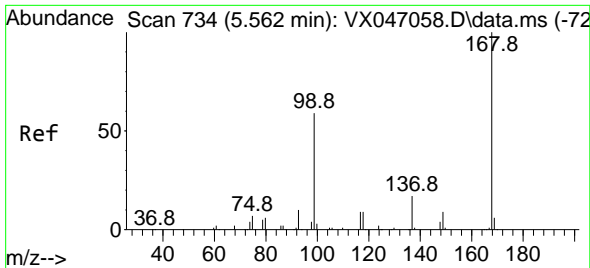
(#) = qualifier out of range (m) = manual integration (+) = signals summed

Data Path : Z:\voasrv\HPCHEM1\MSVOA_X\Data\VX081425\
 Data File : VX047338.D
 Acq On : 14 Aug 2025 11:54
 Operator : JC/MD
 Sample : VX0814WBL01
 Misc : 5.0mL/MSVOA_X/WATER
 ALS Vial : 4 Sample Multiplier: 1

Instrument :
 MSVOA_X
 ClientSampleId :
 VX0814WBL01

Quant Time: Aug 18 01:27:39 2025
 Quant Method : Z:\voasrv\HPCHEM1\MSVOA_X\Method\82X072125W.M
 Quant Title : SW846 8260
 QLast Update : Tue Jul 22 03:59:51 2025
 Response via : Initial Calibration

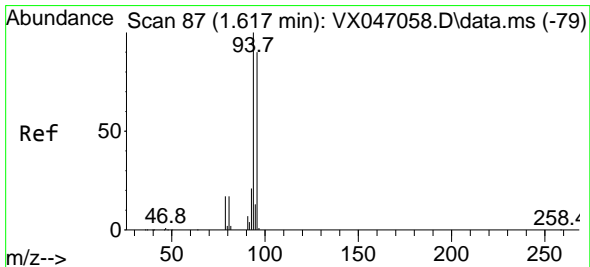
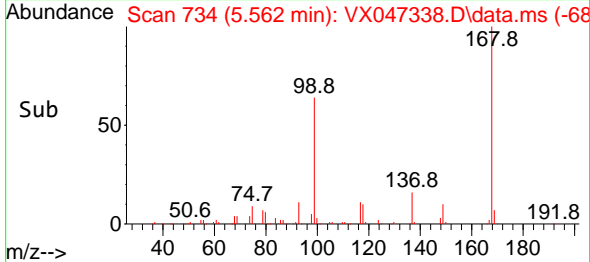
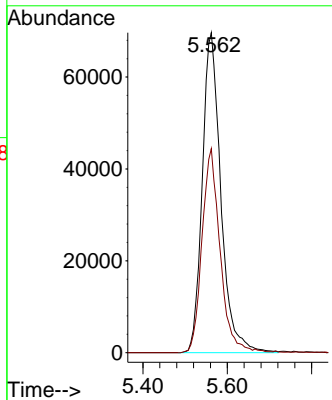
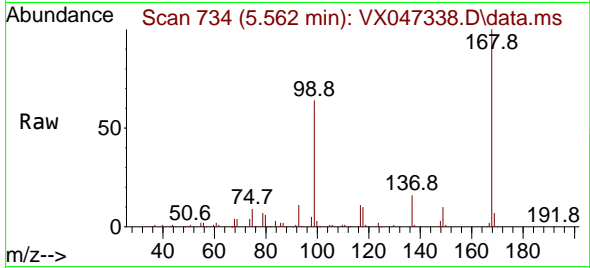




#1
 Pentafluorobenzene
 Concen: 50.000 ug/l
 RT: 5.562 min Scan# 71
 Delta R.T. 0.000 min
 Lab File: VX047338.D
 Acq: 14 Aug 2025 11:54

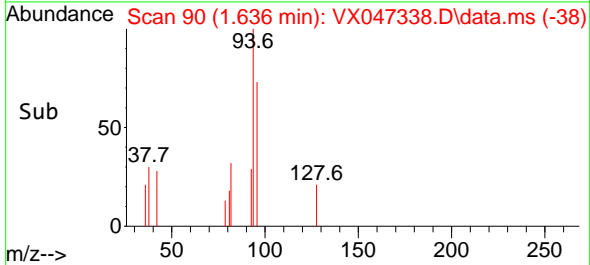
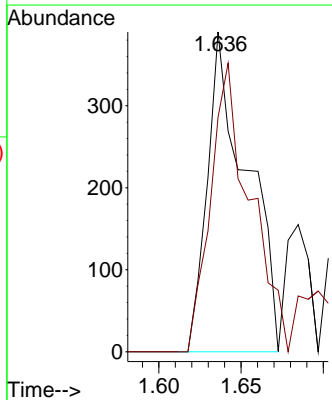
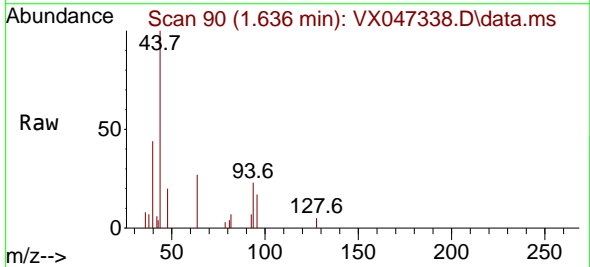
Instrument :
 MSVOA_X
 ClientSampleId :
 VX0814WBL01

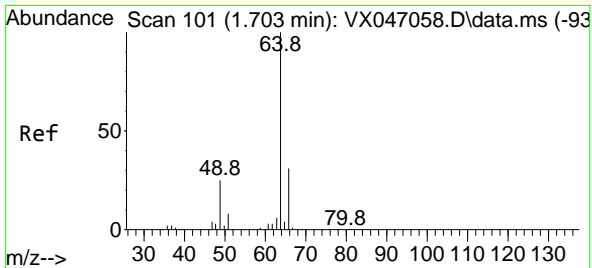
Tgt Ion:168 Resp: 213625
 Ion Ratio Lower Upper
 168 100
 99 63.7 48.0 72.0



#5
 Bromomethane
 Concen: 0.395 ug/l
 RT: 1.636 min Scan# 90
 Delta R.T. 0.019 min
 Lab File: VX047338.D
 Acq: 14 Aug 2025 11:54

Tgt Ion: 94 Resp: 648
 Ion Ratio Lower Upper
 94 100
 96 73.3 72.3 108.5

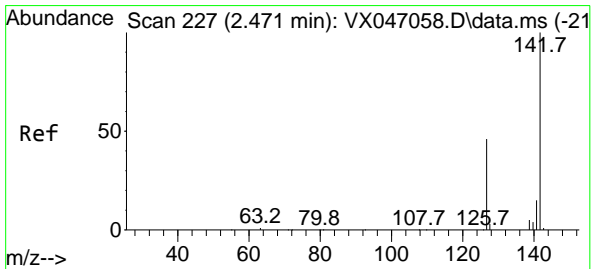
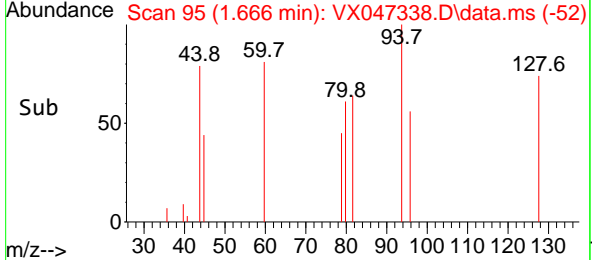
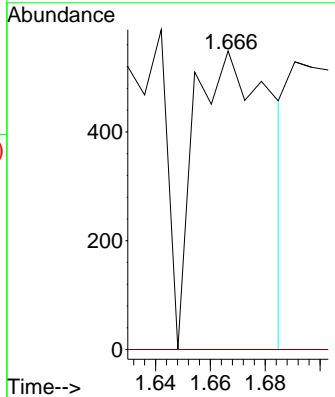
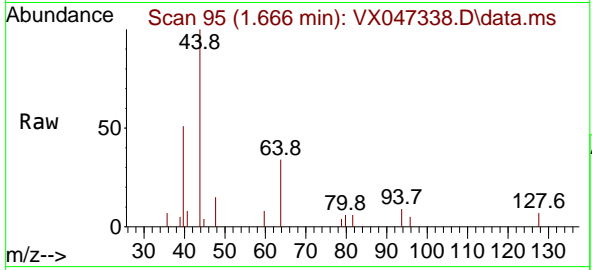




#6
 Chloroethane
 Concen: 0.539 ug/l
 RT: 1.666 min Scan# 91
 Delta R.T. -0.036 min
 Lab File: VX047338.D
 Acq: 14 Aug 2025 11:54

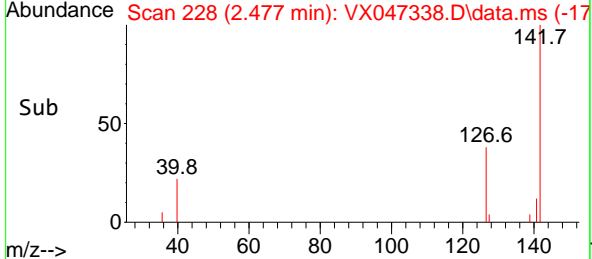
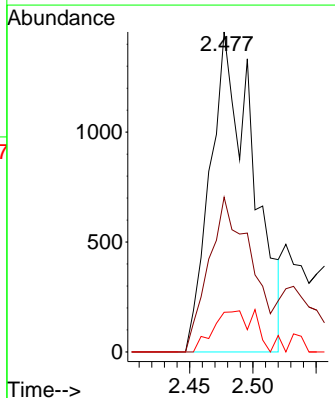
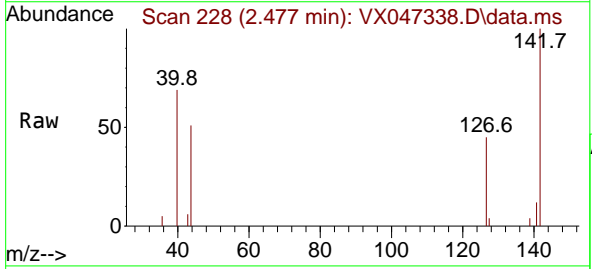
Instrument : MSVOA_X
 ClientSampleId : VX0814WBL01

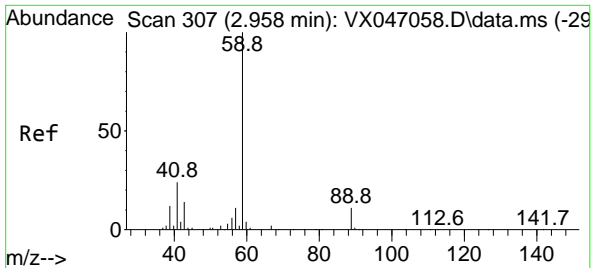
Tgt Ion: 64 Resp: 1068
 Ion Ratio Lower Upper
 64 100
 66 0.0 25.0 37.6#



#10
 Methyl Iodide
 Concen: 1.244 ug/l
 RT: 2.477 min Scan# 228
 Delta R.T. 0.007 min
 Lab File: VX047338.D
 Acq: 14 Aug 2025 11:54

Tgt Ion:142 Resp: 3437
 Ion Ratio Lower Upper
 142 100
 127 47.6 36.6 54.8
 141 0.0 10.9 16.3#

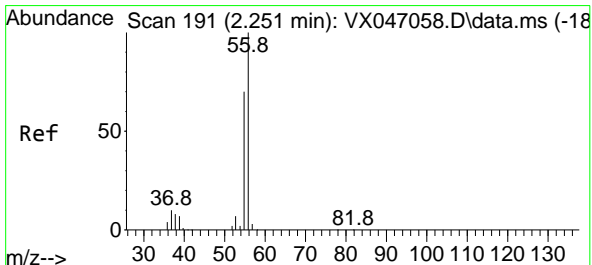
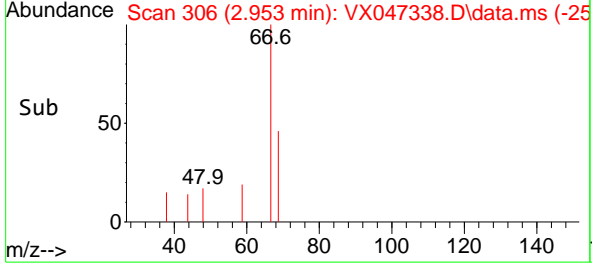
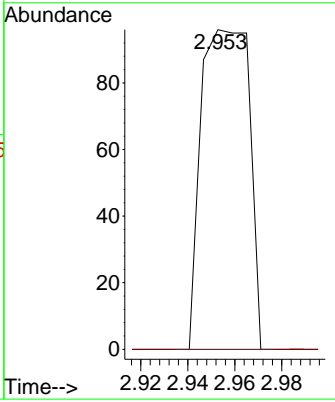
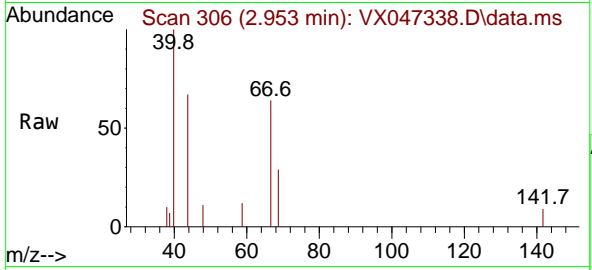




#11
 Tert butyl alcohol
 Concen: Below Cal
 RT: 2.953 min Scan# 30
 Delta R.T. -0.005 min
 Lab File: VX047338.D
 Acq: 14 Aug 2025 11:54

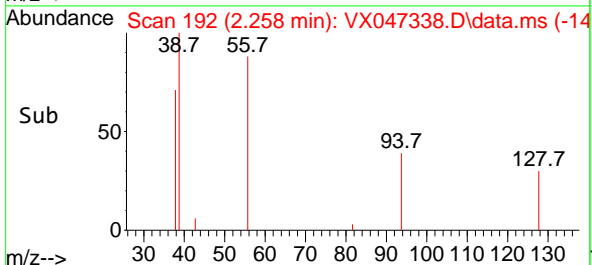
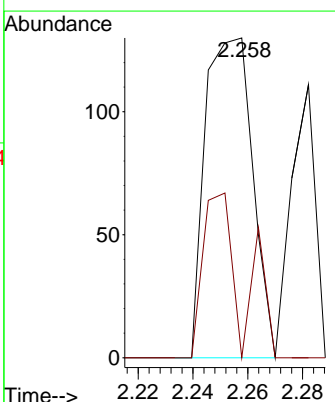
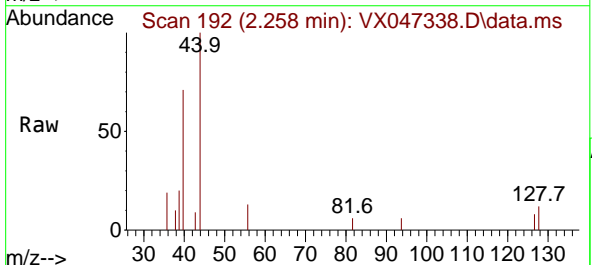
Instrument : MSVOA_X
 ClientSampleId : VX0814WBL01

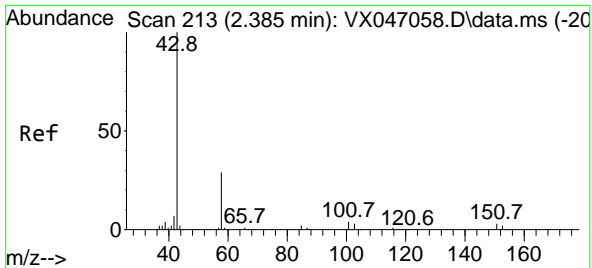
Tgt Ion: 59 Resp: 136
 Ion Ratio Lower Upper
 59 100
 57 0.0 8.5 12.7#



#13
 Acrolein
 Concen: 0.271 ug/l
 RT: 2.258 min Scan# 192
 Delta R.T. 0.007 min
 Lab File: VX047338.D
 Acq: 14 Aug 2025 11:54

Tgt Ion: 56 Resp: 155
 Ion Ratio Lower Upper
 56 100
 55 43.2 55.7 83.5#

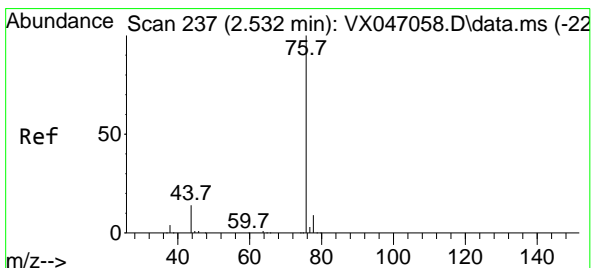
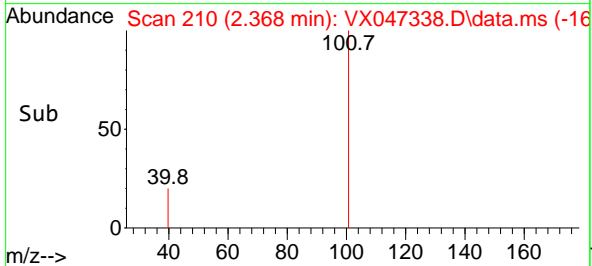
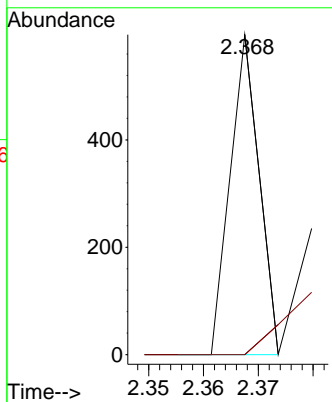
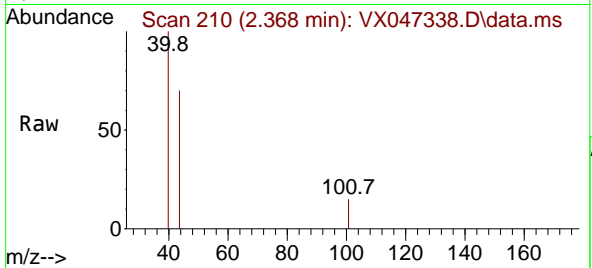




#16
 Acetone
 Concen: 0.204 ug/l
 RT: 2.368 min Scan# 210
 Delta R.T. -0.018 min
 Lab File: VX047338.D
 Acq: 14 Aug 2025 11:54

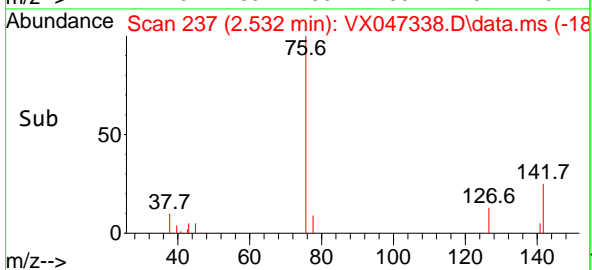
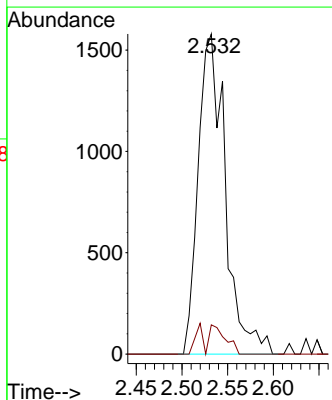
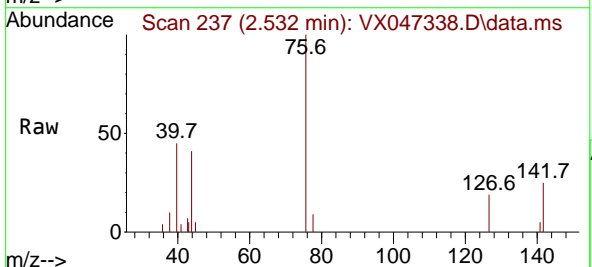
Instrument : MSVOA_X
 ClientSampleId : VX0814WBL01

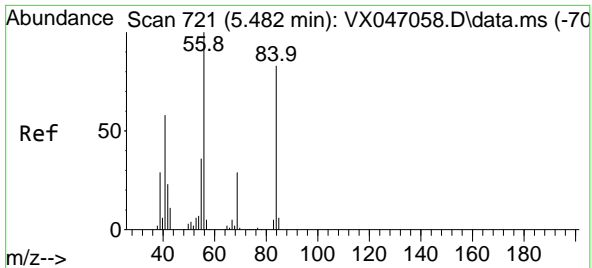
Tgt Ion: 43 Resp: 218
 Ion Ratio Lower Upper
 43 100
 58 0.0 24.0 36.0#



#17
 Carbon Disulfide
 Concen: 0.417 ug/l
 RT: 2.532 min Scan# 237
 Delta R.T. 0.000 min
 Lab File: VX047338.D
 Acq: 14 Aug 2025 11:54

Tgt Ion: 76 Resp: 3240
 Ion Ratio Lower Upper
 76 100
 78 9.1 7.0 10.4

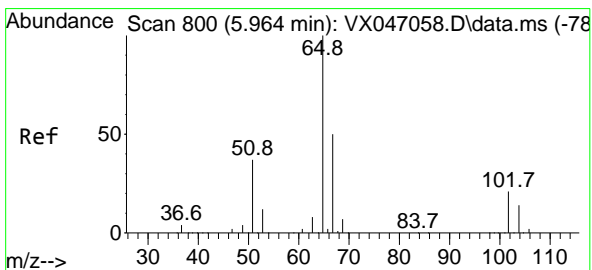
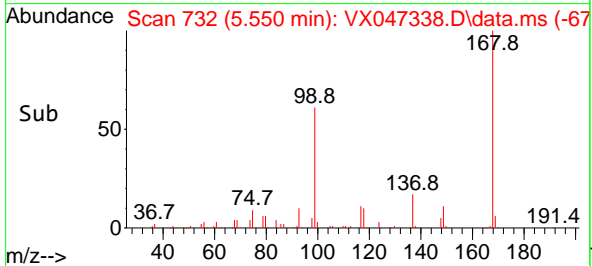
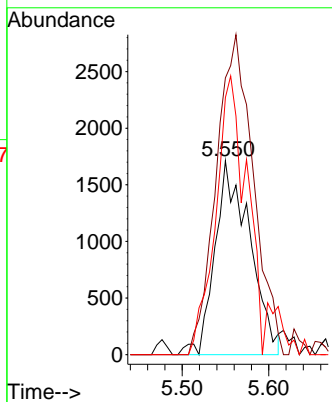
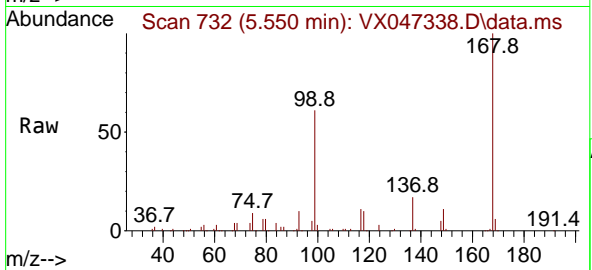




#31
 Cyclohexane
 Concen: 0.962 ug/l
 RT: 5.550 min Scan# 711
 Delta R.T. 0.068 min
 Lab File: VX047338.D
 Acq: 14 Aug 2025 11:54

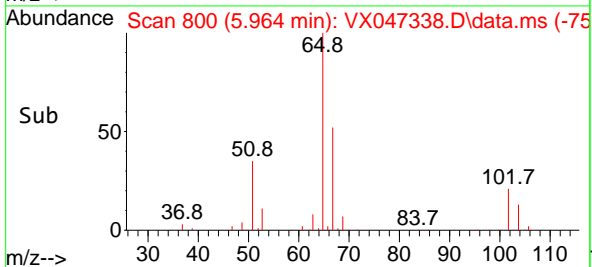
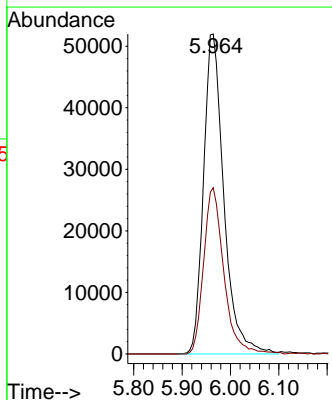
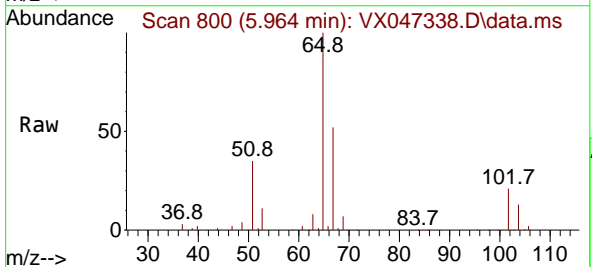
Instrument : MSVOA_X
 ClientSampleId : VX0814WBL01

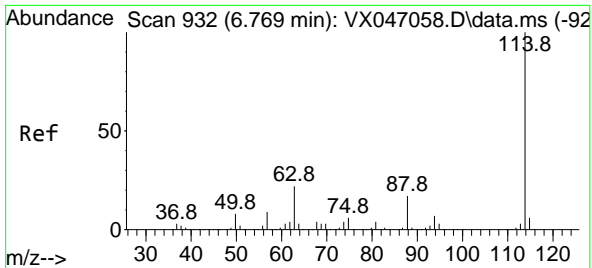
Tgt Ion: 56 Resp: 4785
 Ion Ratio Lower Upper
 56 100
 69 142.8 23.3 34.9#
 84 132.7 66.5 99.7#



#33
 1,2-Dichloroethane-d4
 Concen: 57.037 ug/l
 RT: 5.964 min Scan# 800
 Delta R.T. 0.000 min
 Lab File: VX047338.D
 Acq: 14 Aug 2025 11:54

Tgt Ion: 65 Resp: 151781
 Ion Ratio Lower Upper
 65 100
 67 51.6 0.0 104.8



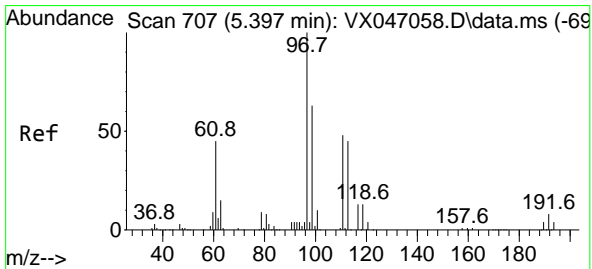
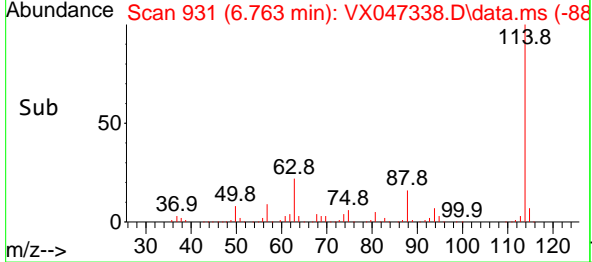
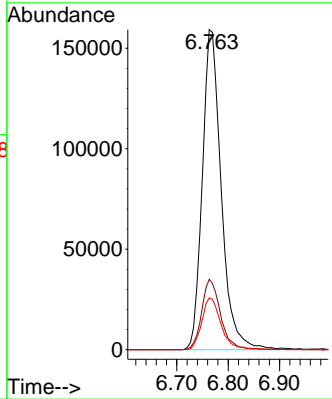
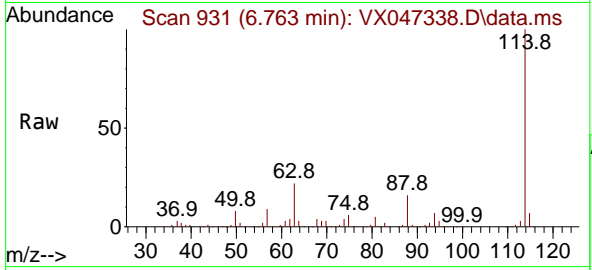


#34
 1,4-Difluorobenzene
 Concen: 50.000 ug/l
 RT: 6.763 min Scan# 911
 Delta R.T. -0.006 min
 Lab File: VX047338.D
 Acq: 14 Aug 2025 11:54

Instrument : MSVOA_X
 ClientSampleId : VX0814WBL01

Tgt Ion:114 Resp: 406583

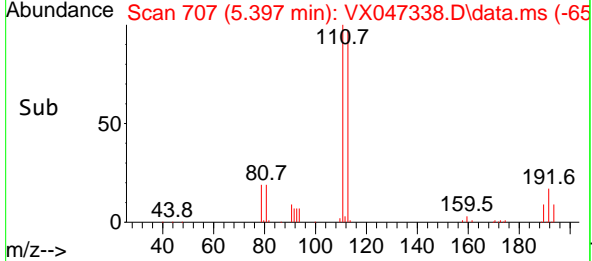
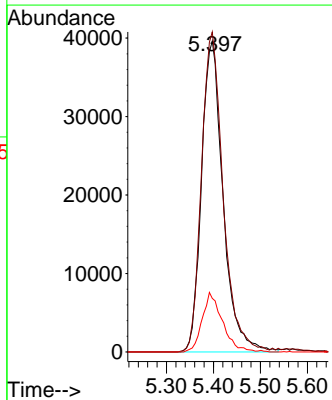
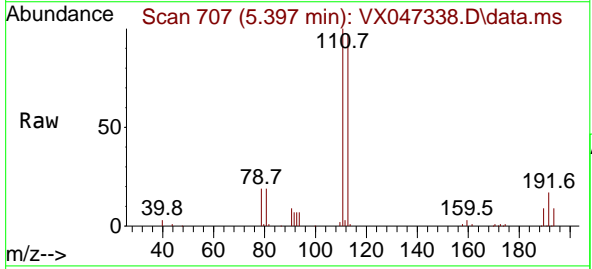
Ion	Ratio	Lower	Upper
114	100		
63	22.0	0.0	43.2
88	16.2	0.0	33.8

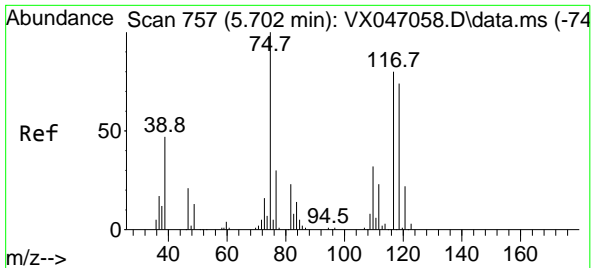


#35
 Dibromofluoromethane
 Concen: 50.253 ug/l
 RT: 5.397 min Scan# 707
 Delta R.T. 0.000 min
 Lab File: VX047338.D
 Acq: 14 Aug 2025 11:54

Tgt Ion:113 Resp: 126155

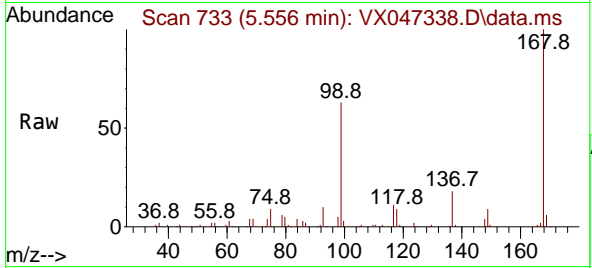
Ion	Ratio	Lower	Upper
113	100		
111	103.2	82.6	124.0
192	17.9	14.9	22.3



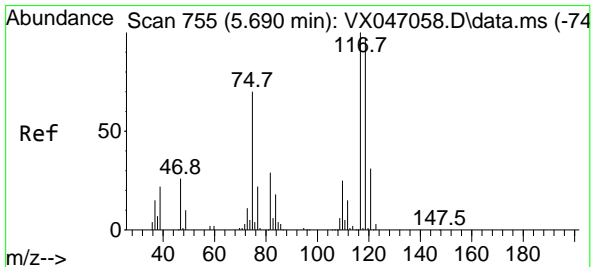
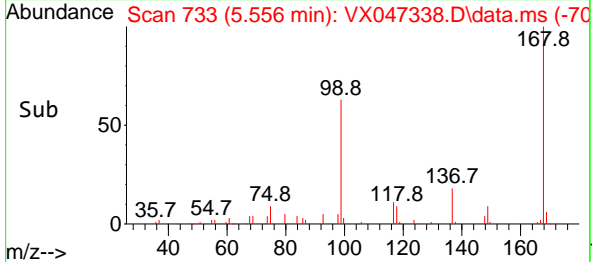
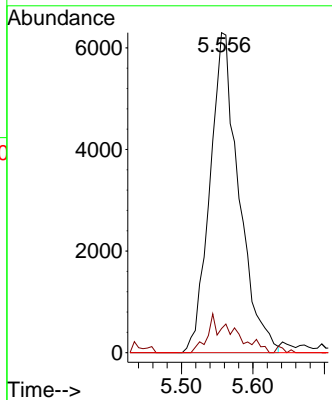


#36
 1,1-Dichloropropene
 Concen: 4.152 ug/l
 RT: 5.556 min Scan# 711
 Delta R.T. -0.146 min
 Lab File: VX047338.D
 Acq: 14 Aug 2025 11:54

Instrument : MSVOA_X
 Client Sample Id : VX0814WBL01

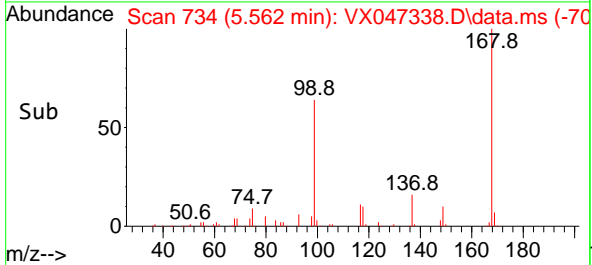
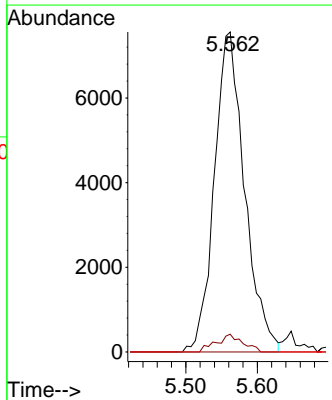
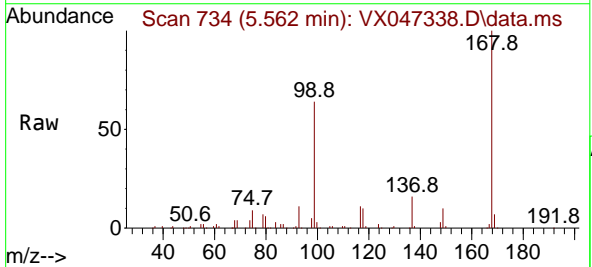


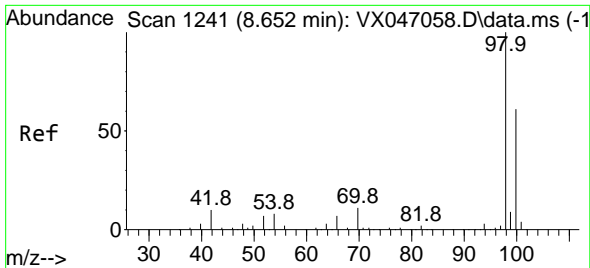
Tgt Ion: 75 Resp: 17765
 Ion Ratio Lower Upper
 75 100
 110 5.0 17.2 51.5#
 77 0.0 25.1 37.7#



#38
 Carbon Tetrachloride
 Concen: 4.847 ug/l
 RT: 5.562 min Scan# 734
 Delta R.T. -0.128 min
 Lab File: VX047338.D
 Acq: 14 Aug 2025 11:54

Tgt Ion: 117 Resp: 22138
 Ion Ratio Lower Upper
 117 100
 119 5.6 76.6 115.0#
 121 0.0 24.4 36.6#

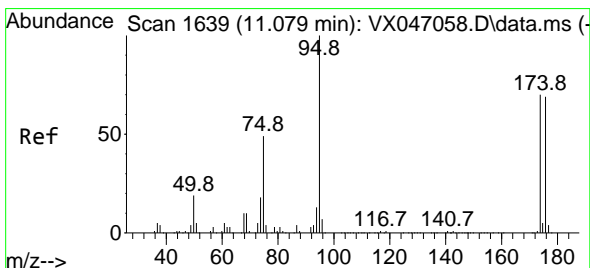
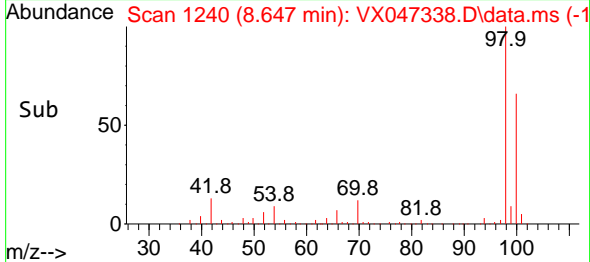
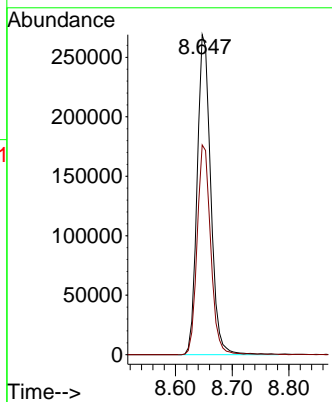
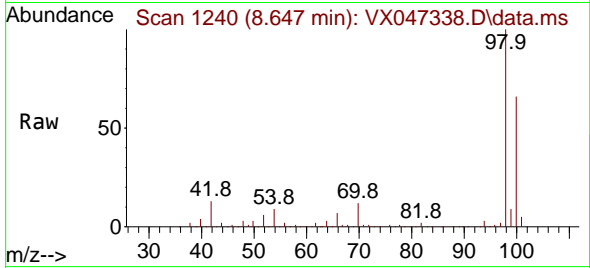




#50
 Toluene-d8
 Concen: 54.905 ug/l
 RT: 8.647 min Scan# 11
 Delta R.T. -0.006 min
 Lab File: VX047338.D
 Acq: 14 Aug 2025 11:54

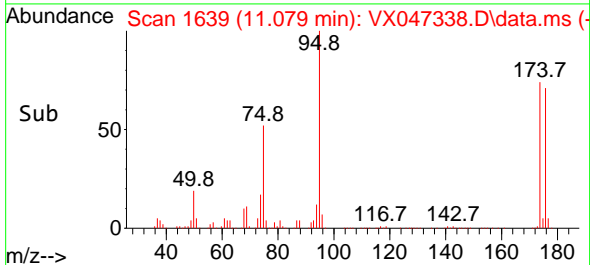
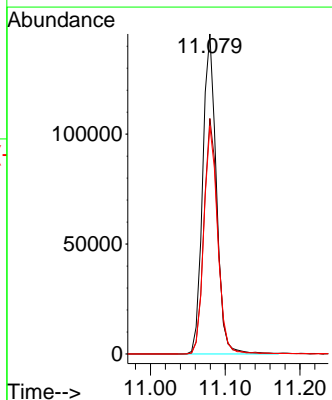
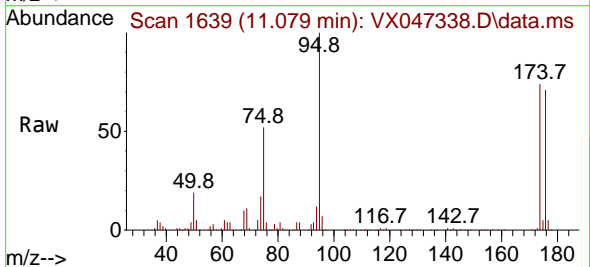
Instrument :
 MSVOA_X
 ClientSampleId :
 VX0814WBL01

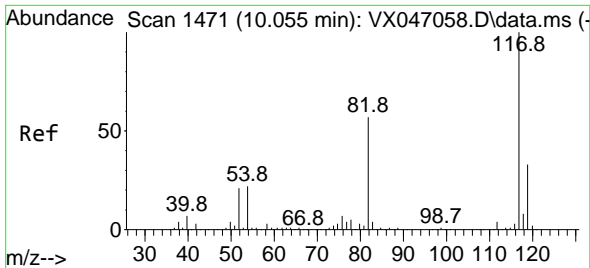
Tgt Ion: 98 Resp: 446363
 Ion Ratio Lower Upper
 98 100
 100 65.5 53.3 79.9



#62
 4-Bromofluorobenzene
 Concen: 52.798 ug/l
 RT: 11.079 min Scan# 1639
 Delta R.T. 0.000 min
 Lab File: VX047338.D
 Acq: 14 Aug 2025 11:54

Tgt Ion: 95 Resp: 184977
 Ion Ratio Lower Upper
 95 100
 174 74.1 0.0 144.6
 176 72.0 0.0 139.6



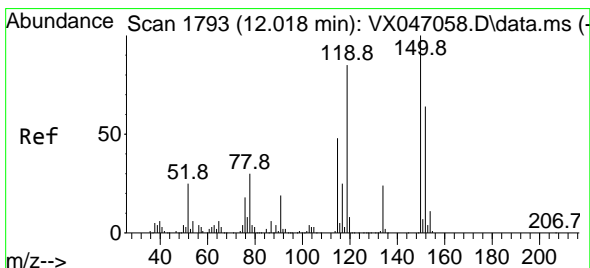
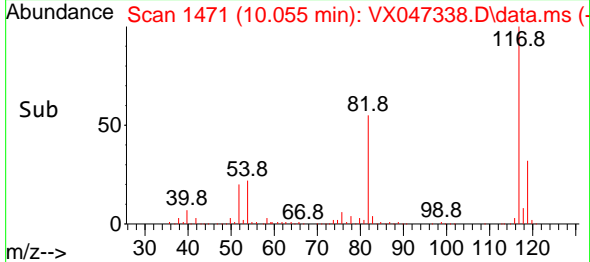
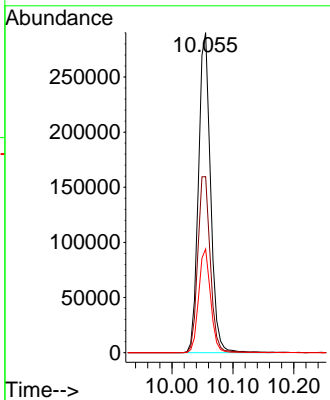
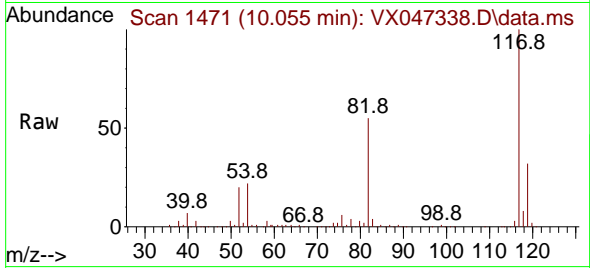


#63
 Chlorobenzene-d5
 Concen: 50.000 ug/l
 RT: 10.055 min Scan# 14
 Delta R.T. 0.000 min
 Lab File: VX047338.D
 Acq: 14 Aug 2025 11:54

Instrument :
 MSVOA_X
 ClientSampleId :
 VX0814WBL01

Tgt Ion:117 Resp: 399638

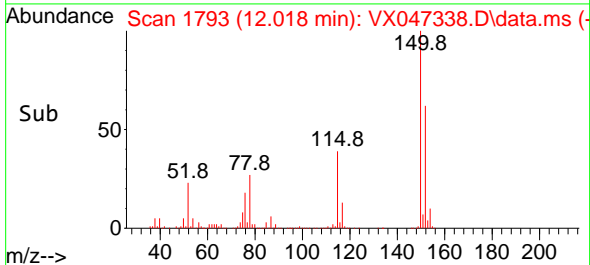
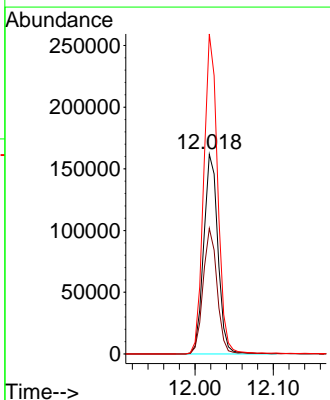
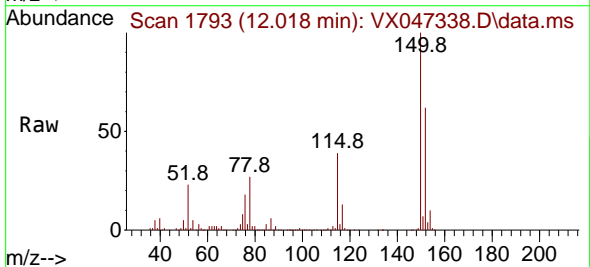
Ion	Ratio	Lower	Upper
117	100		
82	55.0	45.4	68.2
119	32.4	26.1	39.1

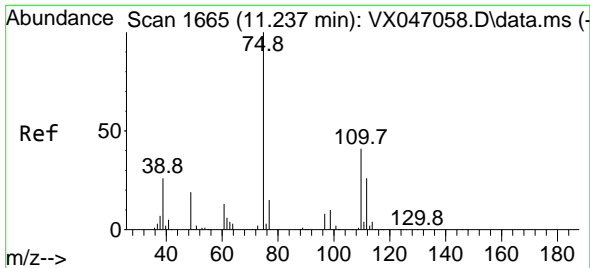


#72
 1,4-Dichlorobenzene-d4
 Concen: 50.000 ug/l
 RT: 12.018 min Scan# 1793
 Delta R.T. 0.000 min
 Lab File: VX047338.D
 Acq: 14 Aug 2025 11:54

Tgt Ion:152 Resp: 203879

Ion	Ratio	Lower	Upper
152	100		
115	61.9	45.6	136.7
150	157.8	0.0	354.6

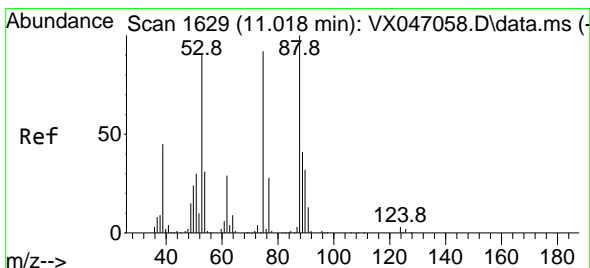
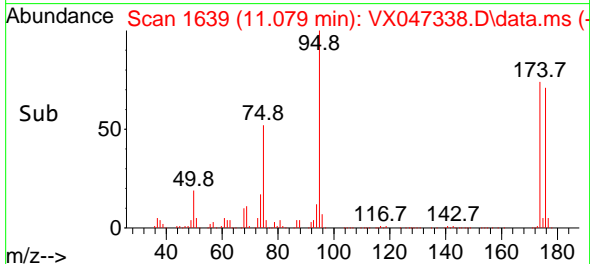
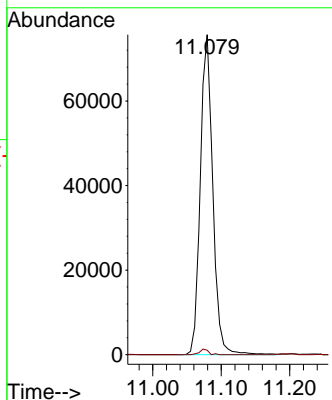
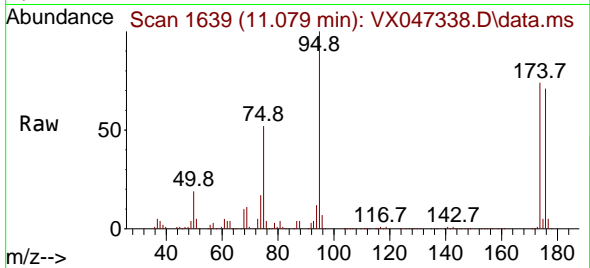




#76
 1,2,3-Trichloropropane
 Concen: 25.463 ug/l
 RT: 11.079 min Scan# 1639
 Delta R.T. -0.158 min
 Lab File: VX047338.D
 Acq: 14 Aug 2025 11:54

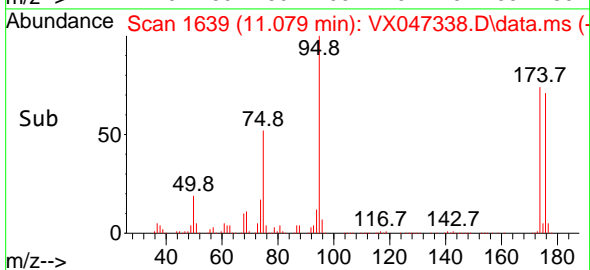
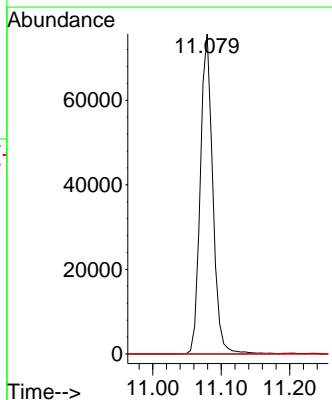
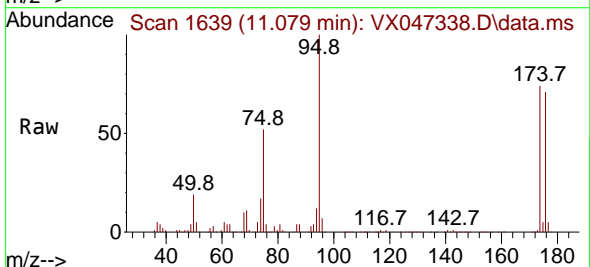
Instrument : MSVOA_X
 ClientSampleId : VX0814WBL01

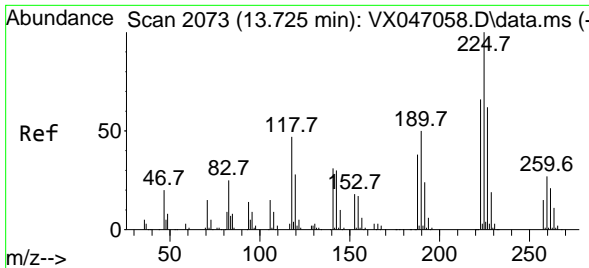
Tgt Ion: 75 Resp: 96090
 Ion Ratio Lower Upper
 75 100
 77 1.2 21.6 65.0#



#81
 trans-1,4-Dichloro-2-butene
 Concen: 65.603 ug/l
 RT: 11.079 min Scan# 1639
 Delta R.T. 0.061 min
 Lab File: VX047338.D
 Acq: 14 Aug 2025 11:54

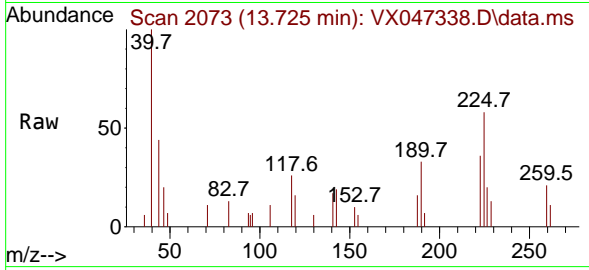
Tgt Ion: 75 Resp: 96090
 Ion Ratio Lower Upper
 75 100
 53 0.0 84.2 126.4#
 89 0.0 36.0 54.0#





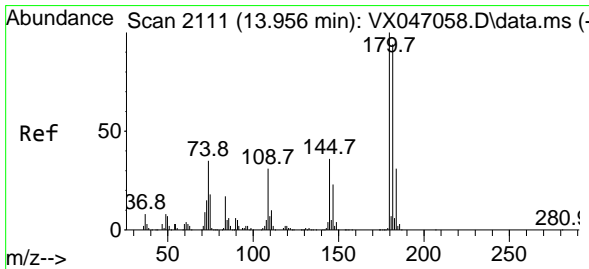
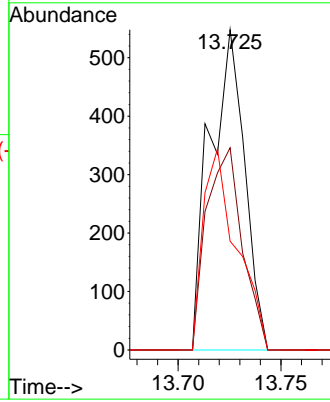
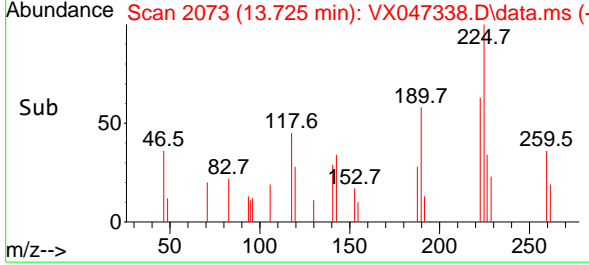
#94
 Hexachlorobutadiene
 Concen: 0.408 ug/l
 RT: 13.725 min Scan# 2073
 Delta R.T. 0.000 min
 Lab File: VX047338.D
 Acq: 14 Aug 2025 11:54

Instrument :
 MSVOA_X
 ClientSampleId :
 VX0814WBL01

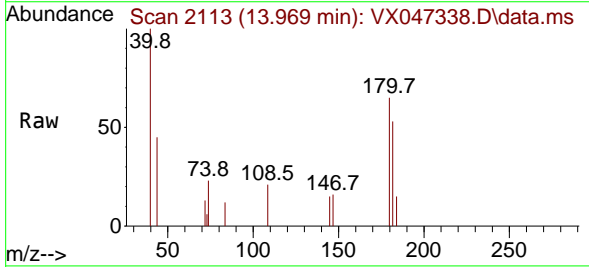


Tgt Ion: 225 Resp: 642

Ion	Ratio	Lower	Upper
225	100		
223	65.0	31.6	95.0
227	60.4	32.9	98.6



#96
 1,2,3-Trichlorobenzene
 Concen: 0.224 ug/l
 RT: 13.969 min Scan# 2113
 Delta R.T. 0.013 min
 Lab File: VX047338.D
 Acq: 14 Aug 2025 11:54



Tgt Ion: 180 Resp: 998

Ion	Ratio	Lower	Upper
180	100		
182	86.6	46.9	140.6
145	18.2	17.3	52.0

