

Data Path : Z:\voasrv\HPCHEM1\MSVOA_X\Data\VX081425\
 Data File : VX047339.D
 Acq On : 14 Aug 2025 12:47
 Operator : JC/MD
 Sample : Q2814-21RE
 Misc : 5.0mL/MSVOA_X/WATER
 ALS Vial : 5 Sample Multiplier: 1

Instrument :
 MSVOA_X
 ClientSampleId :
 TB

Quant Time: Aug 18 01:28:02 2025
 Quant Method : Z:\voasrv\HPCHEM1\MSVOA_X\Method\82X072125W.M
 Quant Title : SW846 8260
 QLast Update : Tue Jul 22 03:59:51 2025
 Response via : Initial Calibration

Compound	R.T.	QIon	Response	Conc Units	Dev(Min)

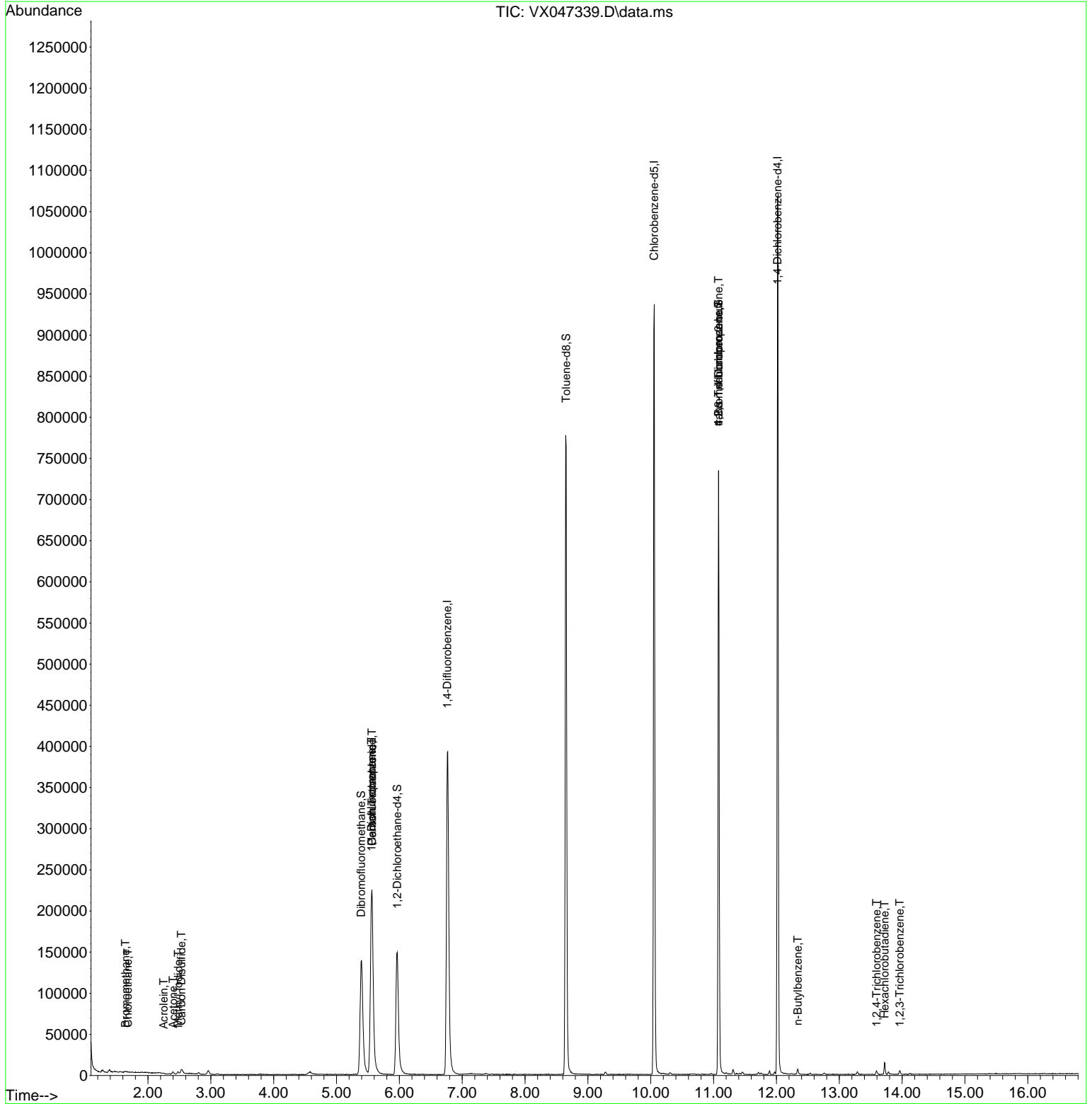
Internal Standards					
1) Pentafluorobenzene	5.562	168	228684	50.000 ug/l	0.00
34) 1,4-Difluorobenzene	6.763	114	436084	50.000 ug/l	0.00
63) Chlorobenzene-d5	10.055	117	425164	50.000 ug/l	0.00
72) 1,4-Dichlorobenzene-d4	12.018	152	212249	50.000 ug/l	0.00
System Monitoring Compounds					
33) 1,2-Dichloroethane-d4	5.964	65	162693	57.112 ug/l	0.00
Spiked Amount	50.000	Range 78 - 117	Recovery	= 114.220%	
35) Dibromofluoromethane	5.391	113	135473	50.314 ug/l	0.00
Spiked Amount	50.000	Range 75 - 124	Recovery	= 100.620%	
50) Toluene-d8	8.653	98	479102	54.945 ug/l	0.00
Spiked Amount	50.000	Range 92 - 112	Recovery	= 109.880%	
62) 4-Bromofluorobenzene	11.079	95	194775	51.834 ug/l	0.00
Spiked Amount	50.000	Range 83 - 123	Recovery	= 103.660%	
Target Compounds					
					Qvalue
5) Bromomethane	1.642	94	715	0.408 ug/l	87
6) Chloroethane	1.679	64	695	0.328 ug/l #	57
10) Methyl Iodide	2.483	142	4984	1.685 ug/l #	92
11) Tert butyl alcohol	2.959	59	2243	Below Cal #	75
13) Acrolein	2.252	56	159	0.259 ug/l #	77
16) Acetone	2.398	43	4133	3.622 ug/l	95
17) Carbon Disulfide	2.532	76	3265	0.393 ug/l	96
36) 1,1-Dichloropropene	5.556	75	18345	3.997 ug/l #	51
38) Carbon Tetrachloride	5.562	117	23216	4.739 ug/l #	17
76) 1,2,3-Trichloropropane	11.079	75	101097	25.733 ug/l #	35
81) trans-1,4-Dichloro-2-b...	11.079	75	101097	66.300 ug/l #	8
89) n-Butylbenzene	12.341	91	3074	0.228 ug/l	92
93) 1,2,4-Trichlorobenzene	13.591	180	1772	0.368 ug/l	82
94) Hexachlorobutadiene	13.719	225	1922	1.173 ug/l	98
96) 1,2,3-Trichlorobenzene	13.963	180	1314	0.283 ug/l	89

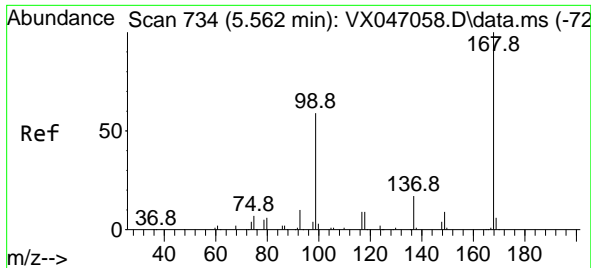
(#) = qualifier out of range (m) = manual integration (+) = signals summed

Data Path : Z:\voasrv\HPCHEM1\MSVOA_X\Data\VX081425\
 Data File : VX047339.D
 Acq On : 14 Aug 2025 12:47
 Operator : JC/MD
 Sample : Q2814-21RE
 Misc : 5.0mL/MSVOA_X/WATER
 ALS Vial : 5 Sample Multiplier: 1

Instrument :
 MSVOA_X
 ClientSampleId :
 TB

Quant Time: Aug 18 01:28:02 2025
 Quant Method : Z:\voasrv\HPCHEM1\MSVOA_X\Method\82X072125W.M
 Quant Title : SW846 8260
 QLast Update : Tue Jul 22 03:59:51 2025
 Response via : Initial Calibration

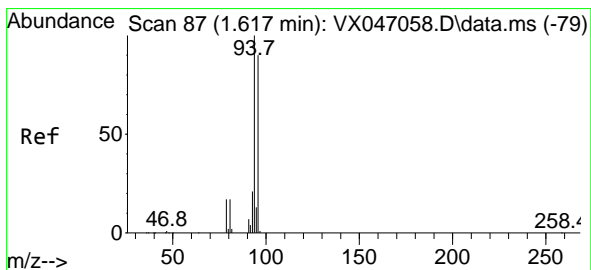
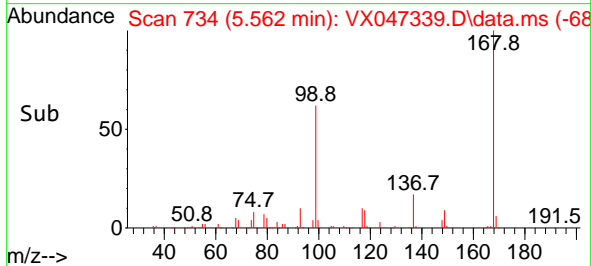
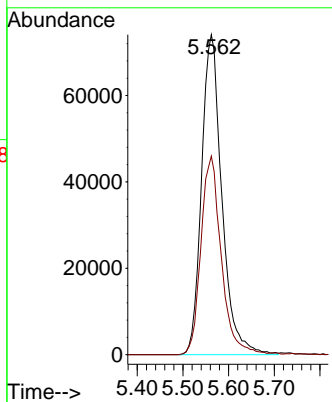
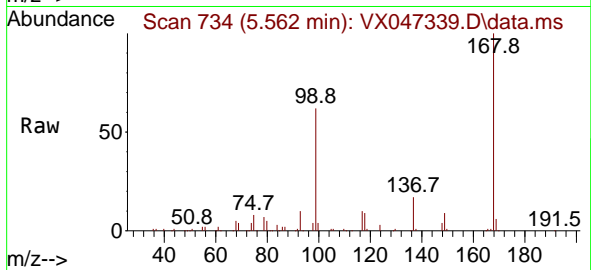




#1
 Pentafluorobenzene
 Concen: 50.000 ug/l
 RT: 5.562 min Scan# 71
 Delta R.T. 0.000 min
 Lab File: VX047339.D
 Acq: 14 Aug 2025 12:47

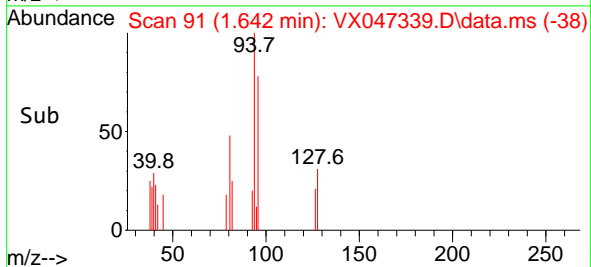
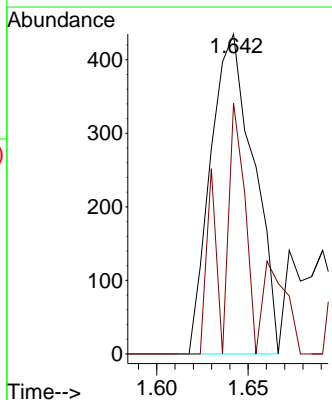
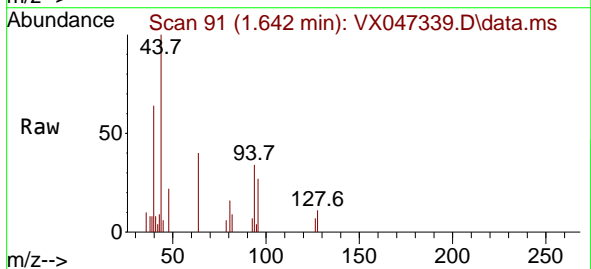
Instrument :
 MSVOA_X
 ClientSampleId :
 TB

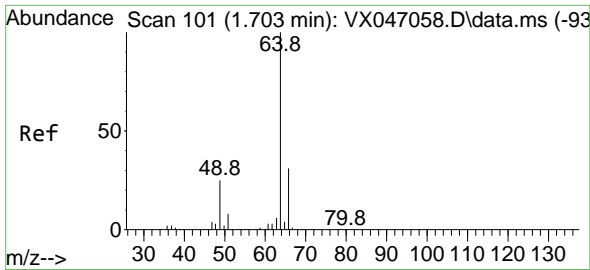
Tgt Ion:168 Resp: 228684
 Ion Ratio Lower Upper
 168 100
 99 62.1 48.0 72.0



#5
 Bromomethane
 Concen: 0.408 ug/l
 RT: 1.642 min Scan# 91
 Delta R.T. 0.025 min
 Lab File: VX047339.D
 Acq: 14 Aug 2025 12:47

Tgt Ion: 94 Resp: 715
 Ion Ratio Lower Upper
 94 100
 96 78.4 72.3 108.5

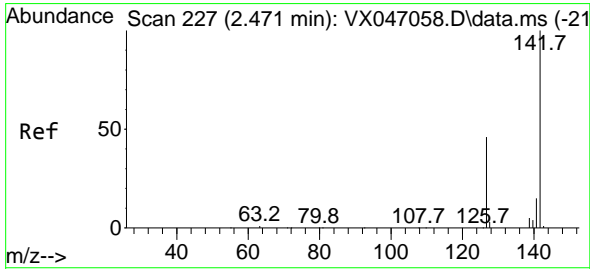
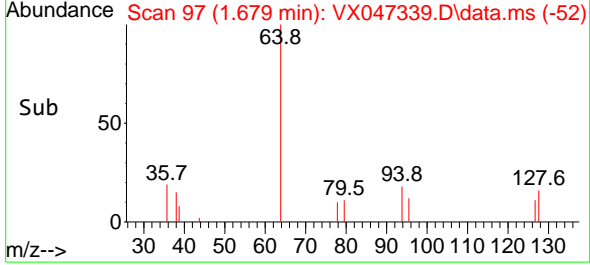
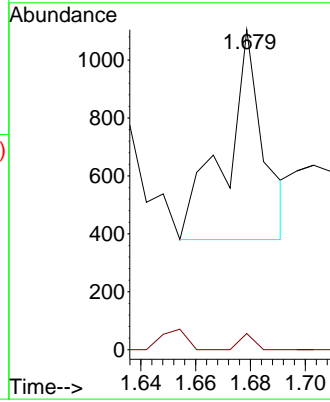
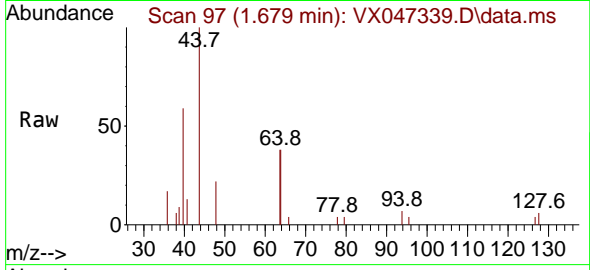




#6
 Chloroethane
 Concen: 0.328 ug/l
 RT: 1.679 min Scan# 91
 Delta R.T. -0.024 min
 Lab File: VX047339.D
 Acq: 14 Aug 2025 12:47

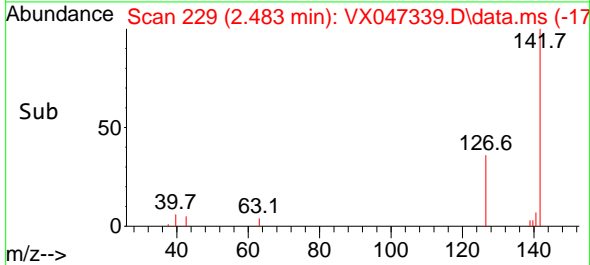
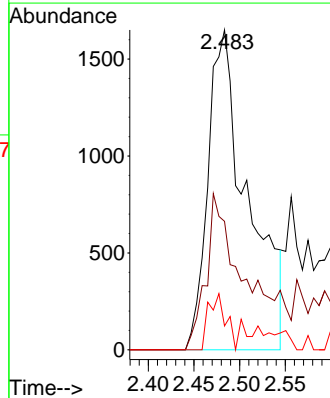
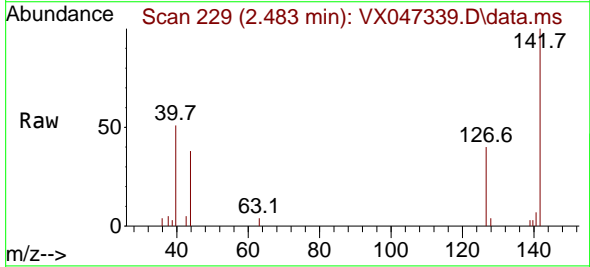
Instrument : MSVOA_X
 ClientSampleId : TB

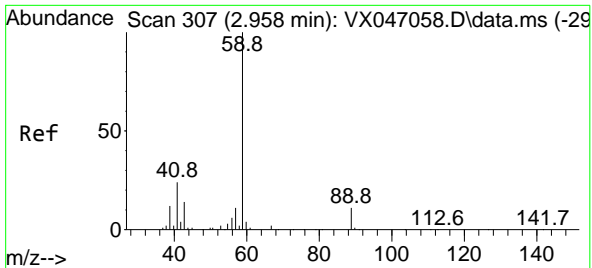
Tgt Ion: 64 Resp: 695
 Ion Ratio Lower Upper
 64 100
 66 7.7 25.0 37.6#



#10
 Methyl Iodide
 Concen: 1.685 ug/l
 RT: 2.483 min Scan# 229
 Delta R.T. 0.013 min
 Lab File: VX047339.D
 Acq: 14 Aug 2025 12:47

Tgt Ion:142 Resp: 4984
 Ion Ratio Lower Upper
 142 100
 127 49.8 36.6 54.8
 141 7.6 10.9 16.3#

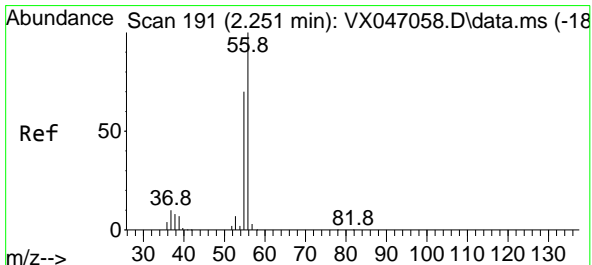
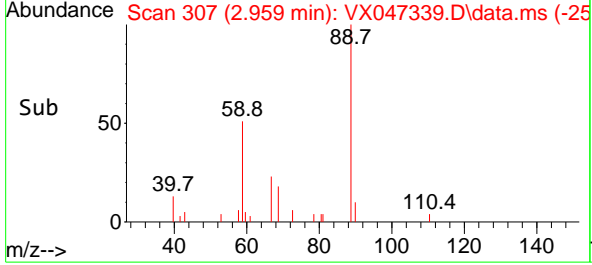
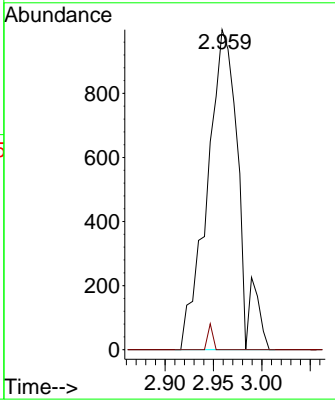
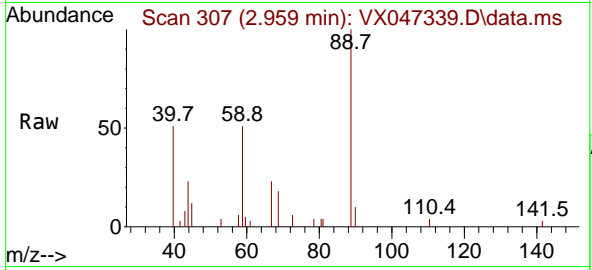




#11
 Tert butyl alcohol
 Concen: Below Cal
 RT: 2.959 min Scan# 30
 Delta R.T. 0.001 min
 Lab File: VX047339.D
 Acq: 14 Aug 2025 12:47

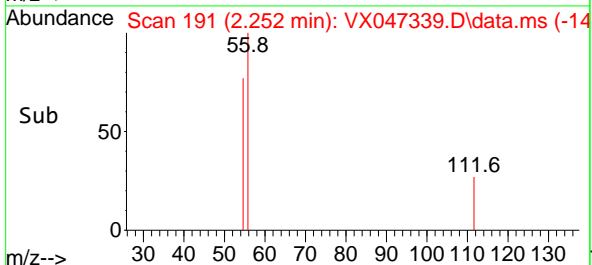
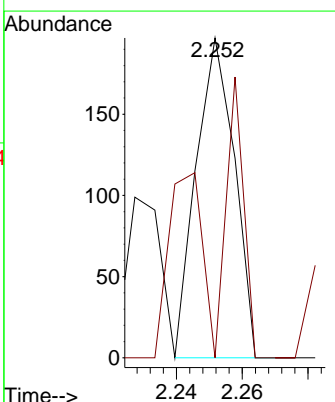
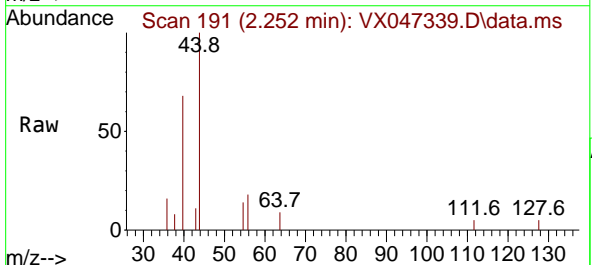
Instrument : MSVOA_X
 ClientSampleId : TB

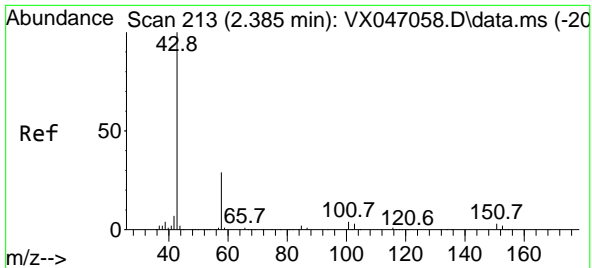
Tgt Ion: 59 Resp: 2243
 Ion Ratio Lower Upper
 59 100
 57 1.3 8.5 12.7#



#13
 Acrolein
 Concen: 0.259 ug/l
 RT: 2.252 min Scan# 191
 Delta R.T. 0.000 min
 Lab File: VX047339.D
 Acq: 14 Aug 2025 12:47

Tgt Ion: 56 Resp: 159
 Ion Ratio Lower Upper
 56 100
 55 50.9 55.7 83.5#

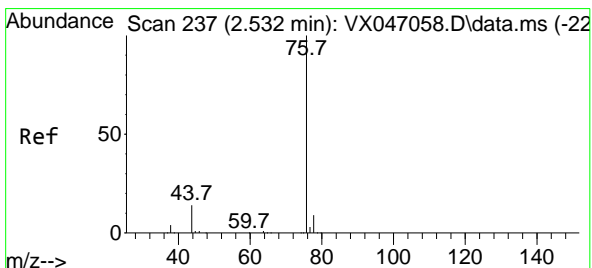
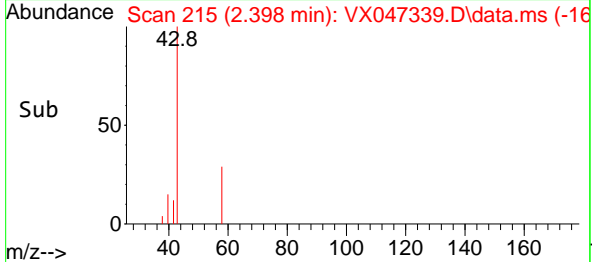
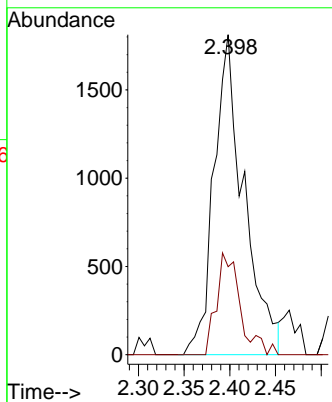
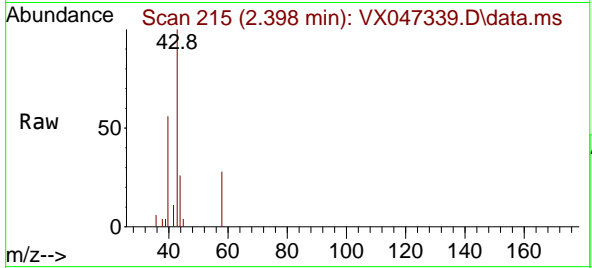




#16
 Acetone
 Concen: 3.622 ug/l
 RT: 2.398 min Scan# 21
 Delta R.T. 0.013 min
 Lab File: VX047339.D
 Acq: 14 Aug 2025 12:47

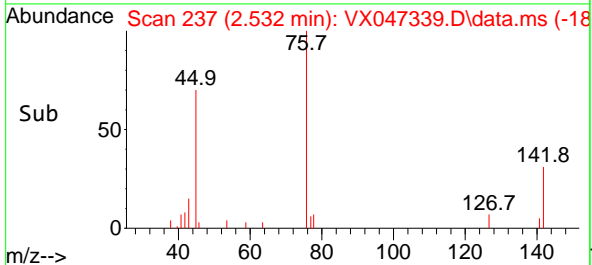
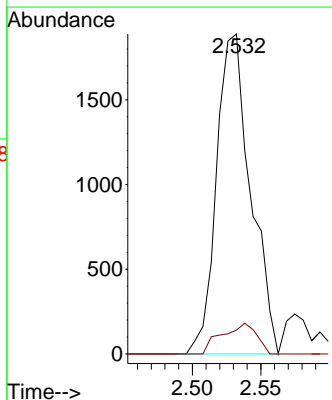
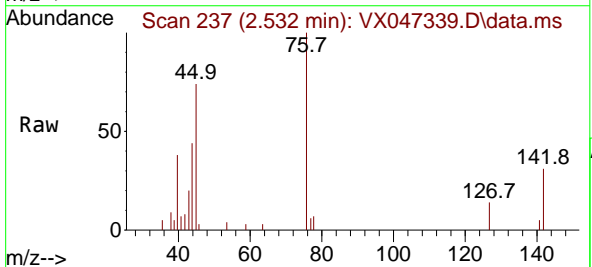
Instrument :
 MSVOA_X
 ClientSampleId :
 TB

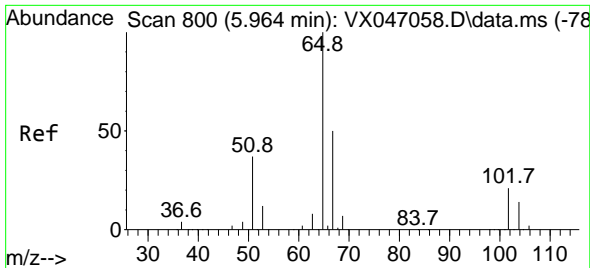
Tgt Ion: 43 Resp: 4133
 Ion Ratio Lower Upper
 43 100
 58 27.5 24.0 36.0



#17
 Carbon Disulfide
 Concen: 0.393 ug/l
 RT: 2.532 min Scan# 237
 Delta R.T. 0.000 min
 Lab File: VX047339.D
 Acq: 14 Aug 2025 12:47

Tgt Ion: 76 Resp: 3265
 Ion Ratio Lower Upper
 76 100
 78 7.4 7.0 10.4

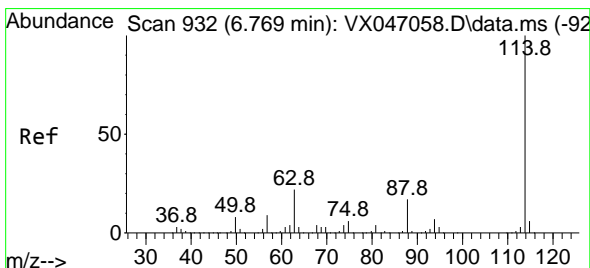
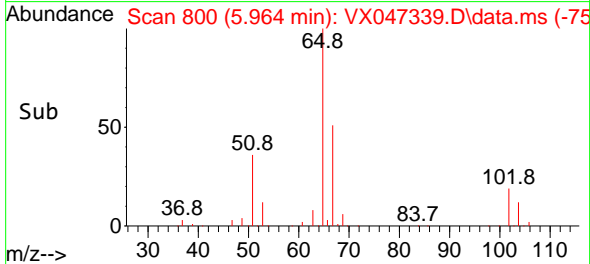
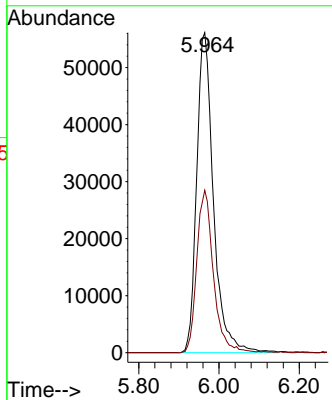
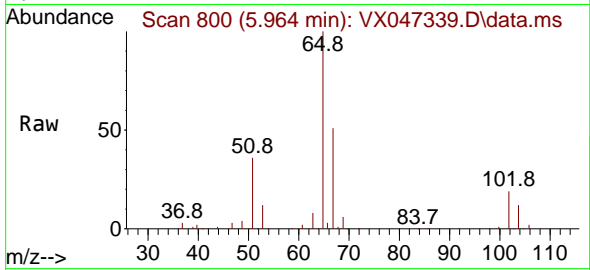




#33
 1,2-Dichloroethane-d4
 Concen: 57.112 ug/l
 RT: 5.964 min Scan# 800
 Delta R.T. 0.000 min
 Lab File: VX047339.D
 Acq: 14 Aug 2025 12:47

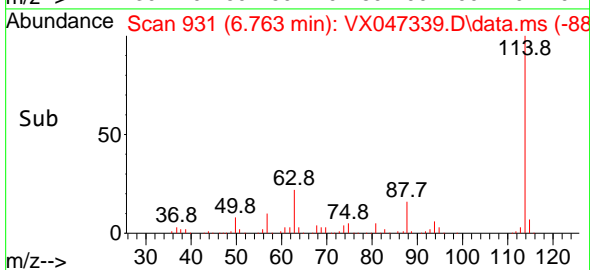
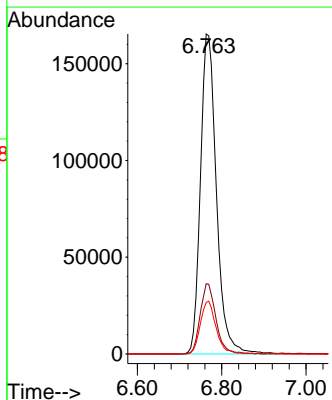
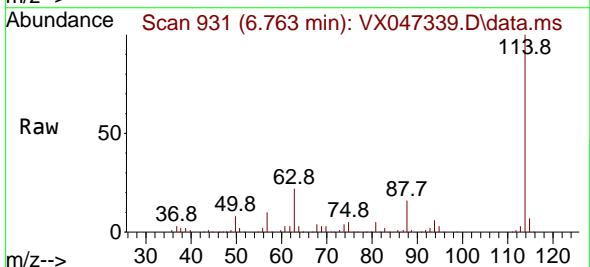
Instrument :
 MSVOA_X
 ClientSampleId :
 TB

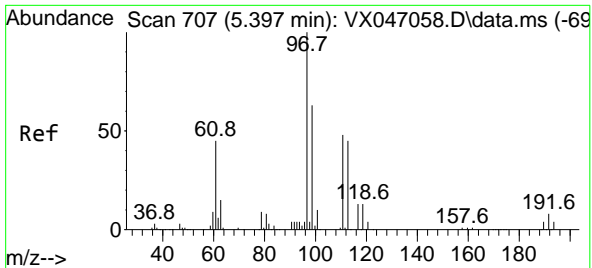
Tgt Ion: 65 Resp: 162693
 Ion Ratio Lower Upper
 65 100
 67 50.3 0.0 104.8



#34
 1,4-Difluorobenzene
 Concen: 50.000 ug/l
 RT: 6.763 min Scan# 931
 Delta R.T. -0.006 min
 Lab File: VX047339.D
 Acq: 14 Aug 2025 12:47

Tgt Ion: 114 Resp: 436084
 Ion Ratio Lower Upper
 114 100
 63 21.9 0.0 43.2
 88 16.1 0.0 33.8



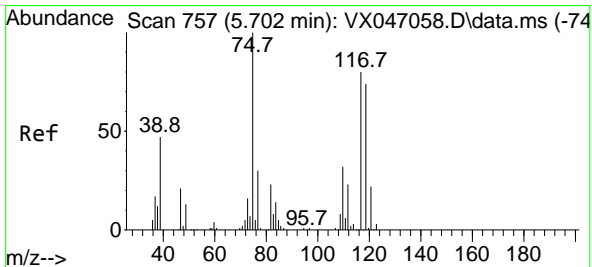
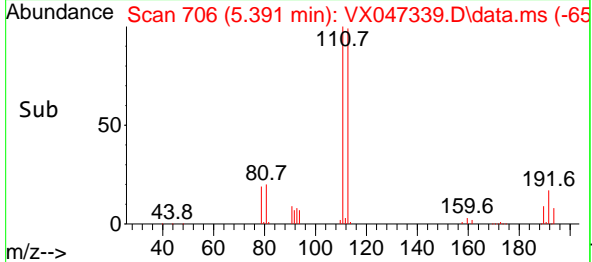
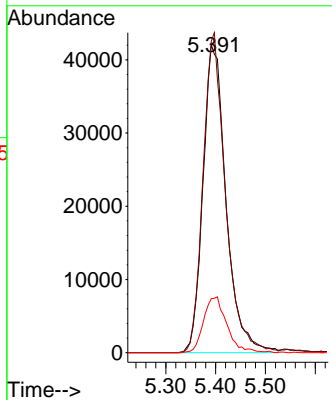
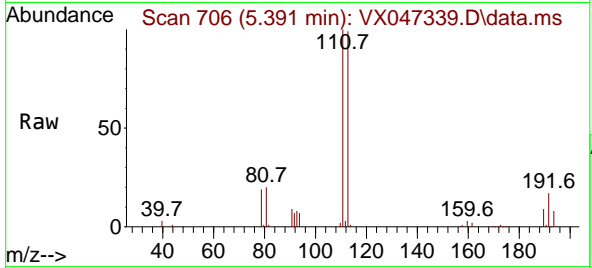


#35
 Dibromofluoromethane
 Concen: 50.314 ug/l
 RT: 5.391 min Scan# 706
 Delta R.T. -0.006 min
 Lab File: VX047339.D
 Acq: 14 Aug 2025 12:47

Instrument : MSVOA_X
 ClientSampleId : TB

Tgt Ion:113 Resp: 135473

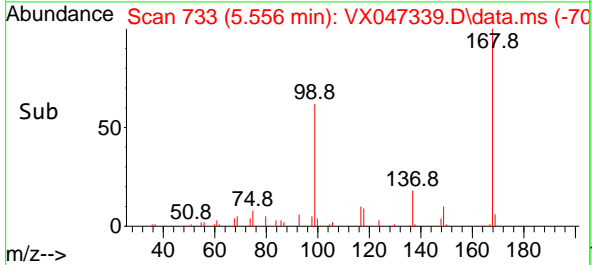
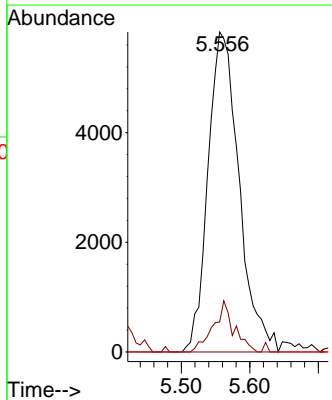
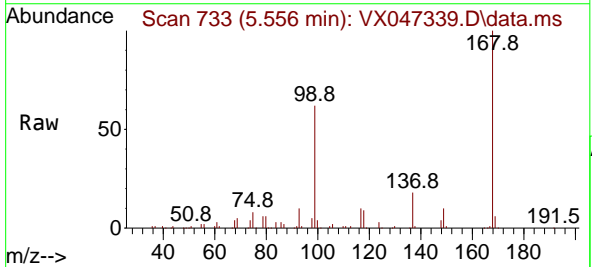
Ion	Ratio	Lower	Upper
113	100		
111	100.6	82.6	124.0
192	18.2	14.9	22.3

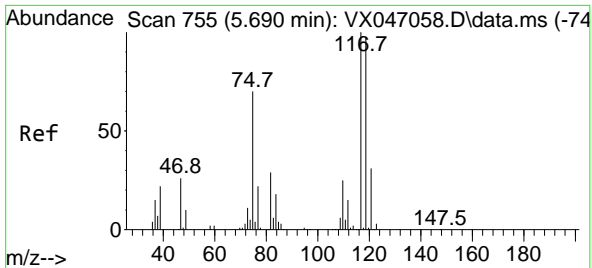


#36
 1,1-Dichloropropene
 Concen: 3.997 ug/l
 RT: 5.556 min Scan# 733
 Delta R.T. -0.146 min
 Lab File: VX047339.D
 Acq: 14 Aug 2025 12:47

Tgt Ion: 75 Resp: 18345

Ion	Ratio	Lower	Upper
75	100		
110	10.6	17.2	51.5#
77	0.0	25.1	37.7#

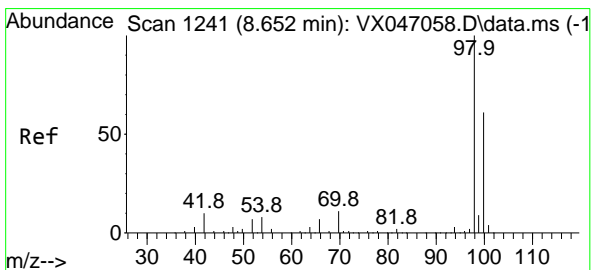
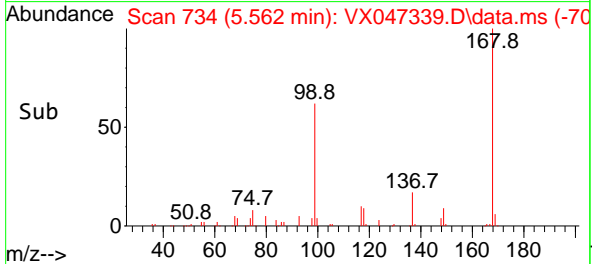
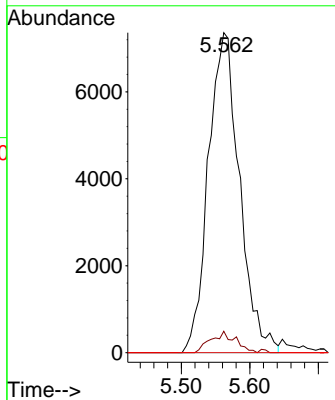
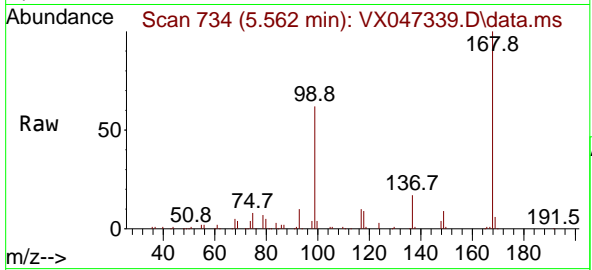




#38
 Carbon Tetrachloride
 Concen: 4.739 ug/l
 RT: 5.562 min Scan# 71
 Delta R.T. -0.128 min
 Lab File: VX047339.D
 Acq: 14 Aug 2025 12:47

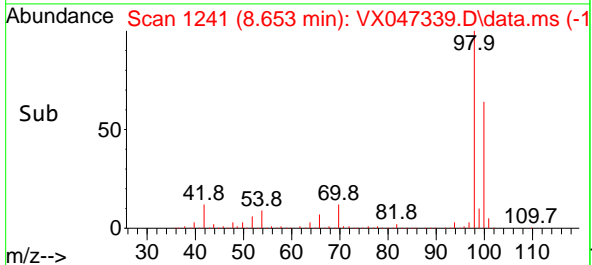
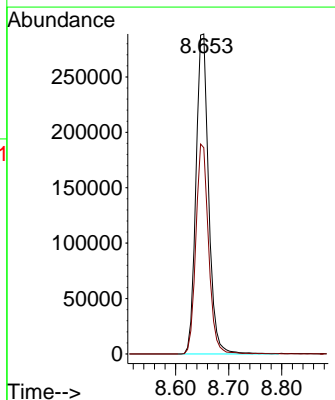
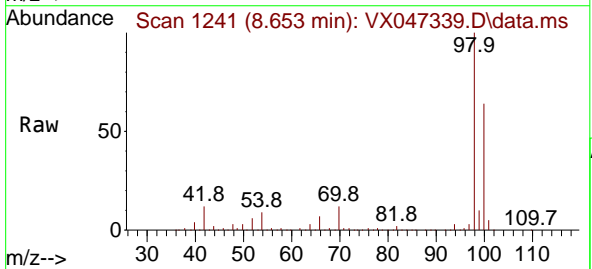
Instrument :
 MSVOA_X
 ClientSampleId :
 TB

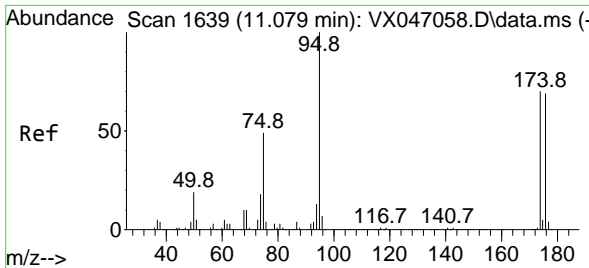
Tgt Ion:117 Resp: 23216
 Ion Ratio Lower Upper
 117 100
 119 6.7 76.6 115.0#
 121 0.0 24.4 36.6#



#50
 Toluene-d8
 Concen: 54.945 ug/l
 RT: 8.653 min Scan# 1241
 Delta R.T. 0.000 min
 Lab File: VX047339.D
 Acq: 14 Aug 2025 12:47

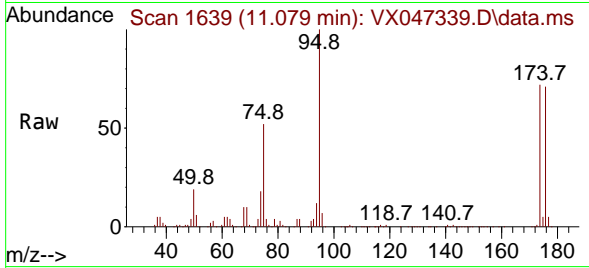
Tgt Ion: 98 Resp: 479102
 Ion Ratio Lower Upper
 98 100
 100 65.8 53.3 79.9



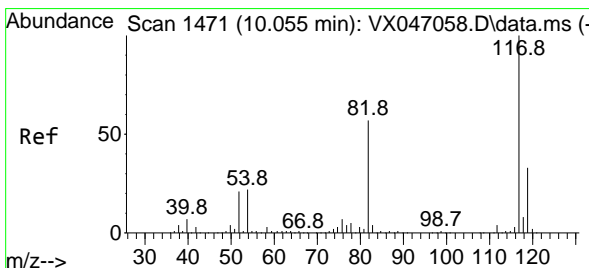
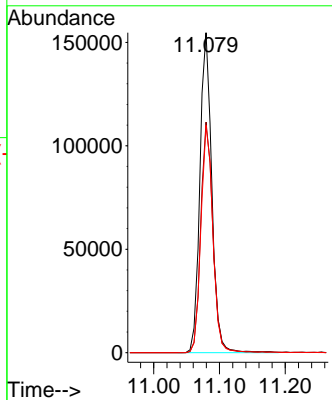
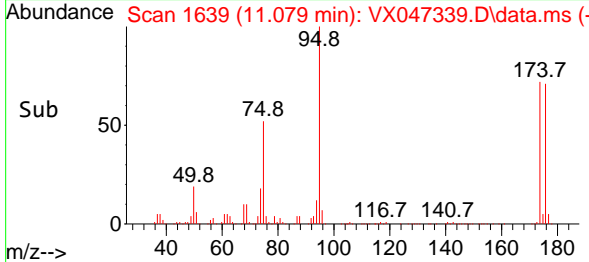


#62
 4-Bromofluorobenzene
 Concen: 51.834 ug/l
 RT: 11.079 min Scan# 1639
 Delta R.T. 0.000 min
 Lab File: VX047339.D
 Acq: 14 Aug 2025 12:47

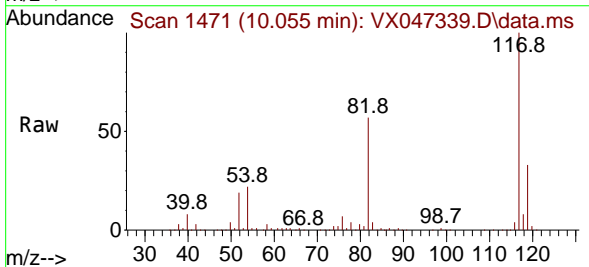
Instrument :
 MSVOA_X
 ClientSampleId :
 TB



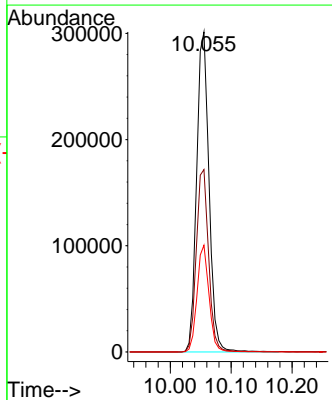
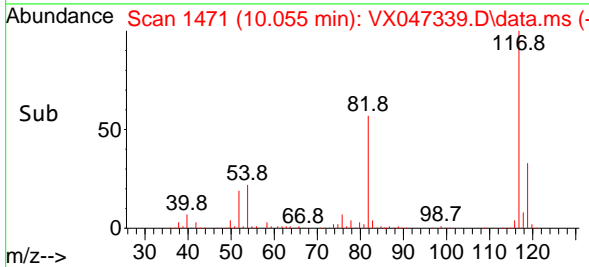
Tgt Ion: 95 Resp: 194775
 Ion Ratio Lower Upper
 95 100
 174 73.1 0.0 144.6
 176 71.7 0.0 139.6

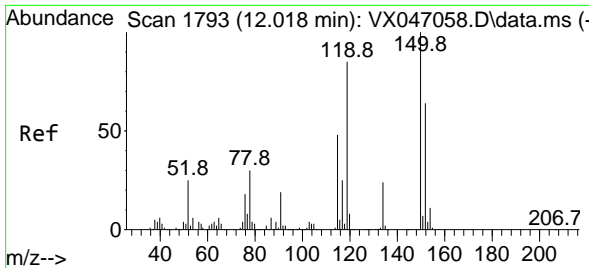


#63
 Chlorobenzene-d5
 Concen: 50.000 ug/l
 RT: 10.055 min Scan# 1471
 Delta R.T. 0.000 min
 Lab File: VX047339.D
 Acq: 14 Aug 2025 12:47



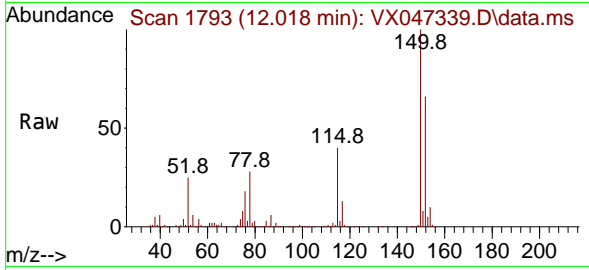
Tgt Ion: 117 Resp: 425164
 Ion Ratio Lower Upper
 117 100
 82 57.0 45.4 68.2
 119 33.4 26.1 39.1



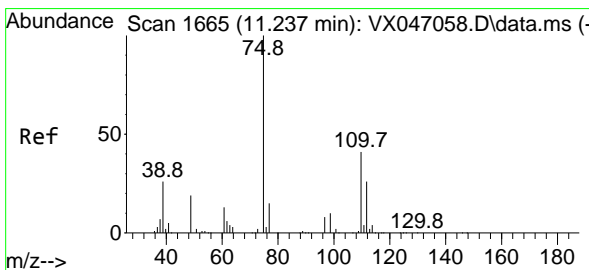
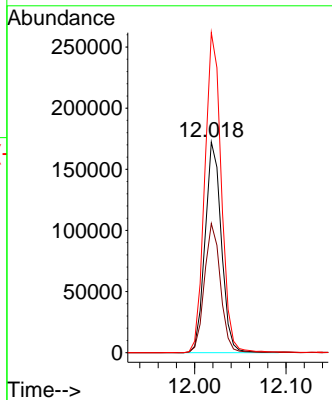
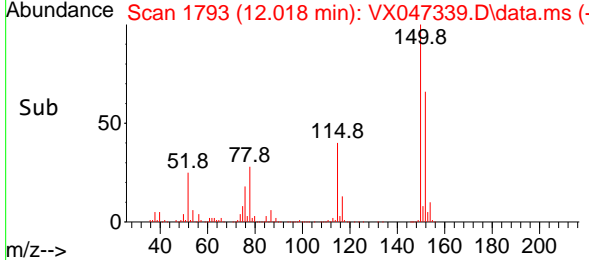


#72
 1,4-Dichlorobenzene-d4
 Concen: 50.000 ug/l
 RT: 12.018 min Scan# 11
 Delta R.T. 0.000 min
 Lab File: VX047339.D
 Acq: 14 Aug 2025 12:47

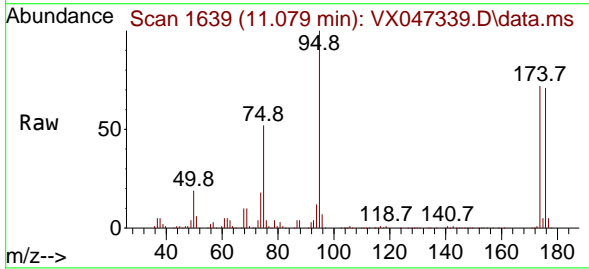
Instrument :
 MSVOA_X
 ClientSampleId :
 TB



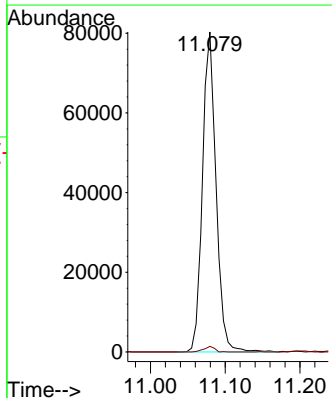
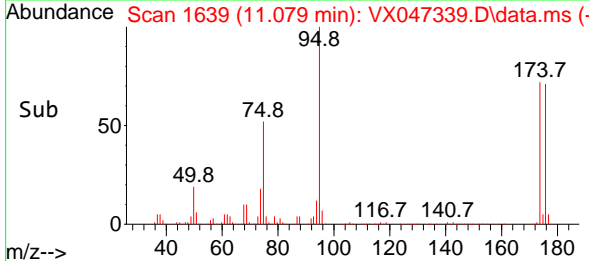
Tgt Ion:152 Resp: 212249
 Ion Ratio Lower Upper
 152 100
 115 60.5 45.6 136.7
 150 154.7 0.0 354.6

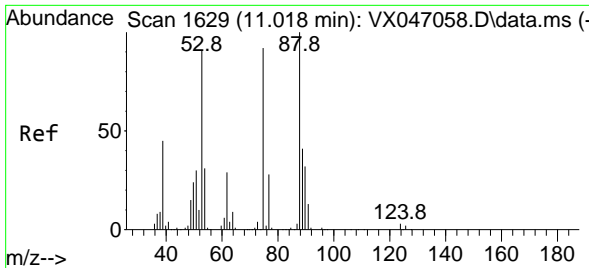


#76
 1,2,3-Trichloropropane
 Concen: 25.733 ug/l
 RT: 11.079 min Scan# 1639
 Delta R.T. -0.158 min
 Lab File: VX047339.D
 Acq: 14 Aug 2025 12:47



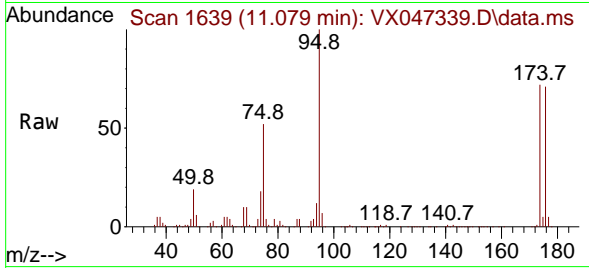
Tgt Ion: 75 Resp: 101097
 Ion Ratio Lower Upper
 75 100
 77 1.4 21.6 65.0#



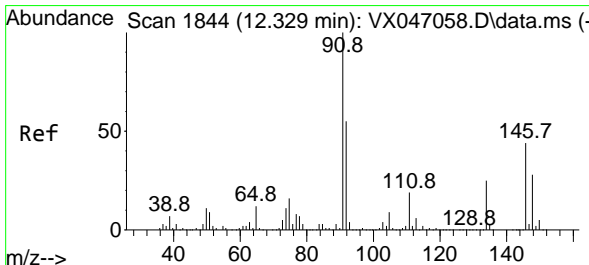
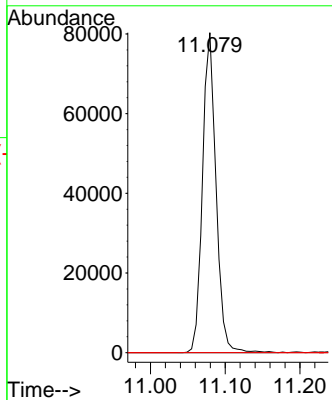
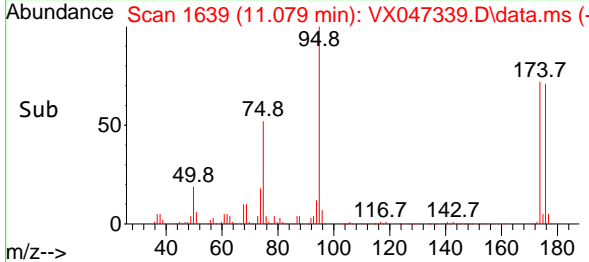


#81
 trans-1,4-Dichloro-2-butene
 Concen: 66.300 ug/l
 RT: 11.079 min Scan# 10
 Delta R.T. 0.061 min
 Lab File: VX047339.D
 Acq: 14 Aug 2025 12:47

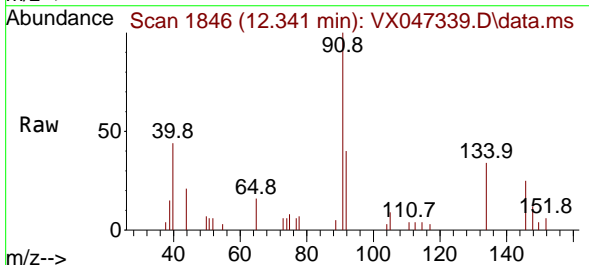
Instrument : MSVOA_X
 ClientSampleId : TB



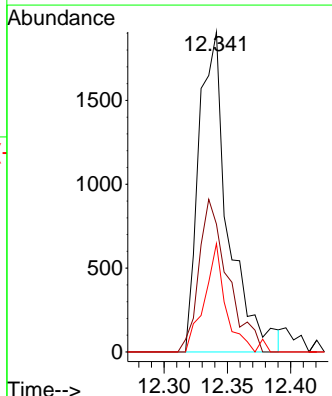
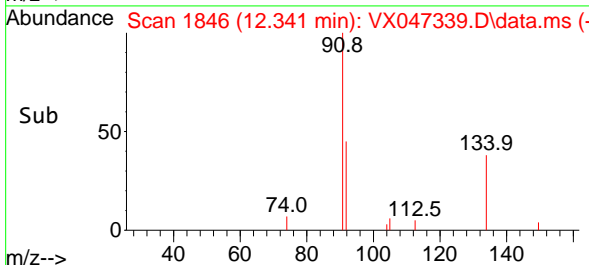
Tgt Ion: 75 Resp: 101097
 Ion Ratio Lower Upper
 75 100
 53 0.0 84.2 126.4#
 89 0.0 36.0 54.0#

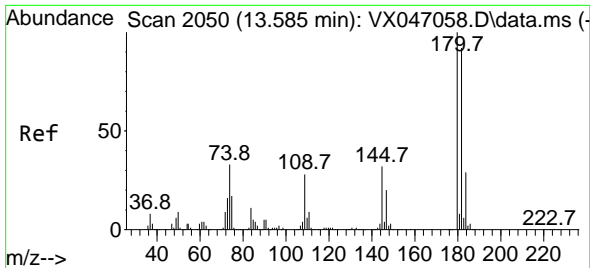


#89
 n-Butylbenzene
 Concen: 0.228 ug/l
 RT: 12.341 min Scan# 1846
 Delta R.T. 0.013 min
 Lab File: VX047339.D
 Acq: 14 Aug 2025 12:47



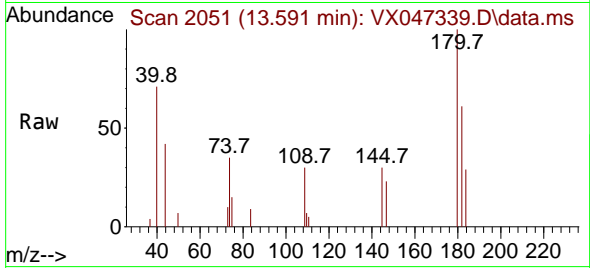
Tgt Ion: 91 Resp: 3074
 Ion Ratio Lower Upper
 91 100
 92 46.8 27.5 82.5
 134 24.3 12.8 38.3



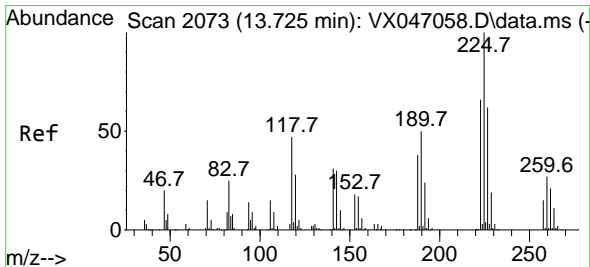
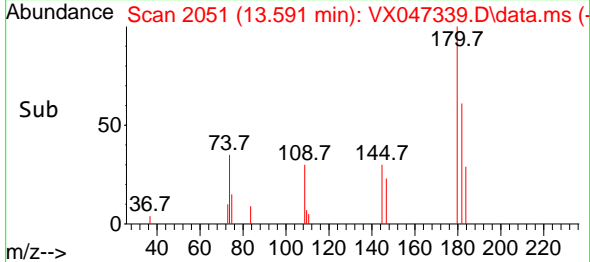
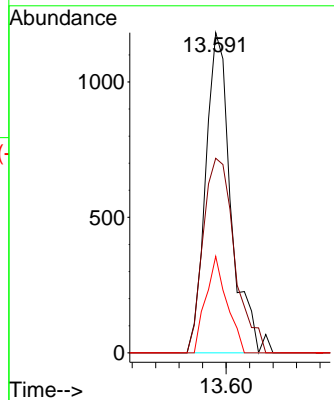


#93
 1,2,4-Trichlorobenzene
 Concen: 0.368 ug/l
 RT: 13.591 min Scan# 2050
 Delta R.T. 0.007 min
 Lab File: VX047339.D
 Acq: 14 Aug 2025 12:47

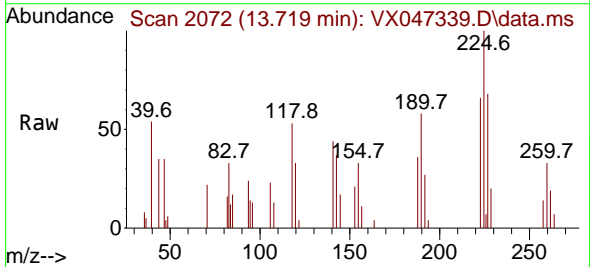
Instrument : MSVOA_X
 ClientSampleId : TB



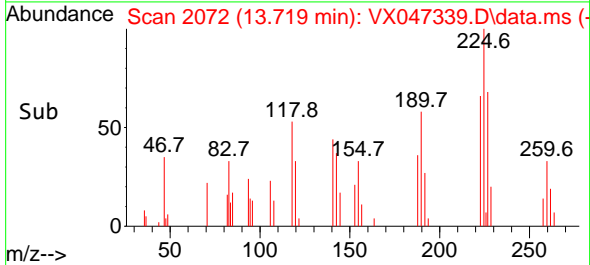
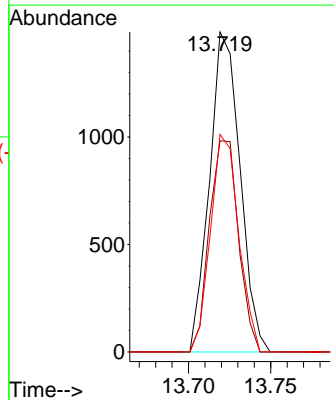
Tgt Ion:180 Resp: 1772
 Ion Ratio Lower Upper
 180 100
 182 75.2 47.3 141.8
 145 25.0 16.4 49.1

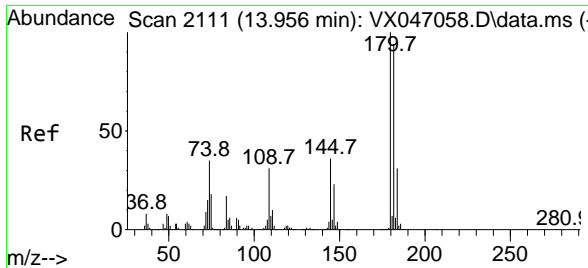


#94
 Hexachlorobutadiene
 Concen: 1.173 ug/l
 RT: 13.719 min Scan# 2072
 Delta R.T. -0.006 min
 Lab File: VX047339.D
 Acq: 14 Aug 2025 12:47



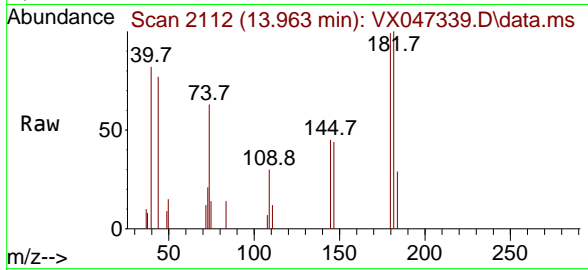
Tgt Ion:225 Resp: 1922
 Ion Ratio Lower Upper
 225 100
 223 62.9 31.6 95.0
 227 62.5 32.9 98.6





#96
 1,2,3-Trichlorobenzene
 Concen: 0.283 ug/l
 RT: 13.963 min Scan# 21
 Delta R.T. 0.007 min
 Lab File: VX047339.D
 Acq: 14 Aug 2025 12:47

Instrument :
 MSVOA_X
 ClientSampleId :
 TB



Tgt Ion:180 Resp: 1314

Ion	Ratio	Lower	Upper
180	100		
182	104.0	46.9	140.6
145	41.9	17.3	52.0

