

Data Path : Z:\voasrv\HPCHEM1\MSVOA_X\Data\VX081425\
 Data File : VX047341.D
 Acq On : 14 Aug 2025 13:58
 Operator : JC/MD
 Sample : Q2814-17RE
 Misc : 5.0mL/MSVOA_X/WATER
 ALS Vial : 7 Sample Multiplier: 1

Instrument :
 MSVOA_X
 ClientSampleId :
 TW-518R-S

Quant Time: Aug 18 01:29:12 2025
 Quant Method : Z:\voasrv\HPCHEM1\MSVOA_X\Method\82X072125W.M
 Quant Title : SW846 8260
 QLast Update : Tue Jul 22 03:59:51 2025
 Response via : Initial Calibration

Compound	R.T.	QIon	Response	Conc	Units	Dev(Min)

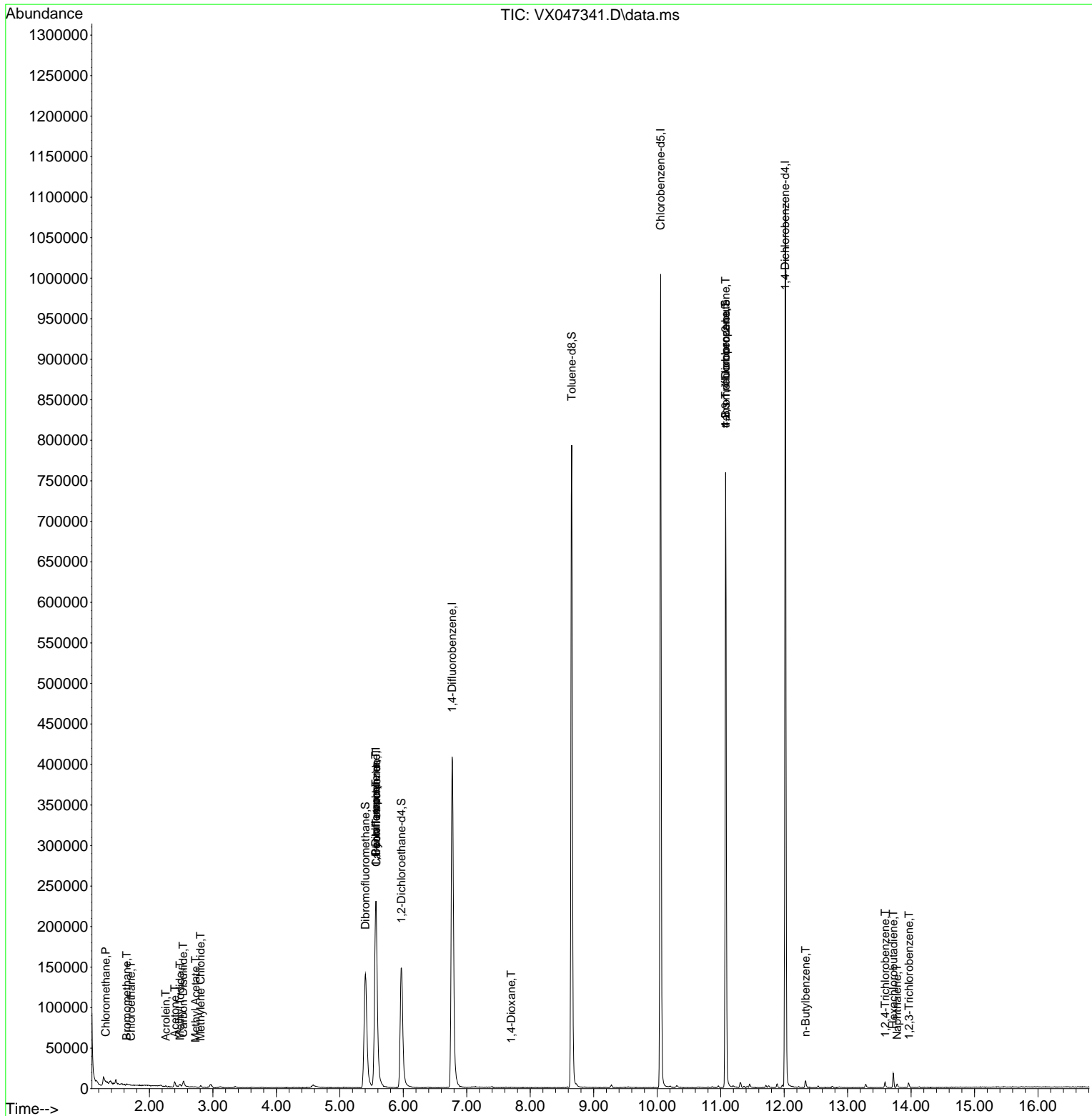
Internal Standards						
1) Pentafluorobenzene	5.568	168	230111	50.000	ug/l	0.00
34) 1,4-Difluorobenzene	6.769	114	440338	50.000	ug/l	0.00
63) Chlorobenzene-d5	10.055	117	435075	50.000	ug/l	0.00
72) 1,4-Dichlorobenzene-d4	12.018	152	217218	50.000	ug/l	0.00
System Monitoring Compounds						
33) 1,2-Dichloroethane-d4	5.971	65	159597	55.677	ug/l	0.00
Spiked Amount	50.000	Range 78 - 117	Recovery	=	111.360%	
35) Dibromofluoromethane	5.404	113	134982	49.648	ug/l	0.00
Spiked Amount	50.000	Range 75 - 124	Recovery	=	99.300%	
50) Toluene-d8	8.653	98	483933	54.963	ug/l	0.00
Spiked Amount	50.000	Range 92 - 112	Recovery	=	109.920%	
62) 4-Bromofluorobenzene	11.079	95	202666	53.412	ug/l	0.00
Spiked Amount	50.000	Range 83 - 123	Recovery	=	106.820%	
Target Compounds						
						Qvalue
3) Chloromethane	1.313	50	753	0.249	ug/l	97
5) Bromomethane	1.642	94	461	0.261	ug/l #	80
6) Chloroethane	1.709	64	557	0.261	ug/l #	70
10) Methyl Iodide	2.483	142	5075	1.705	ug/l	96
11) Tert butyl alcohol	2.965	59	2088	Below Cal	#	72
13) Acrolein	2.258	56	390	0.632	ug/l #	74
16) Acetone	2.398	43	8672	7.552	ug/l	92
17) Carbon Disulfide	2.532	76	7883	0.942	ug/l #	95
18) Methyl Acetate	2.727	43	712	0.233	ug/l #	54
20) Methylene Chloride	2.806	84	814	0.258	ug/l #	88
31) Cyclohexane	5.568	56	5112	0.954	ug/l #	43
36) 1,1-Dichloropropene	5.562	75	18721	4.040	ug/l #	49
38) Carbon Tetrachloride	5.574	117	24458	4.945	ug/l #	17
49) 1,4-Dioxane	7.702	88	182	4.412	ug/l #	80
76) 1,2,3-Trichloropropane	11.079	75	105305	26.191	ug/l #	35
81) trans-1,4-Dichloro-2-b...	11.079	75	105305	67.479	ug/l #	8
89) n-Butylbenzene	12.341	91	3605	0.261	ug/l	89
93) 1,2,4-Trichlorobenzene	13.591	180	2037	0.413	ug/l	86
94) Hexachlorobutadiene	13.719	225	2284	1.362	ug/l	95
95) Naphthalene	13.780	128	3457	0.239	ug/l	99
96) 1,2,3-Trichlorobenzene	13.969	180	1617	0.340	ug/l	98

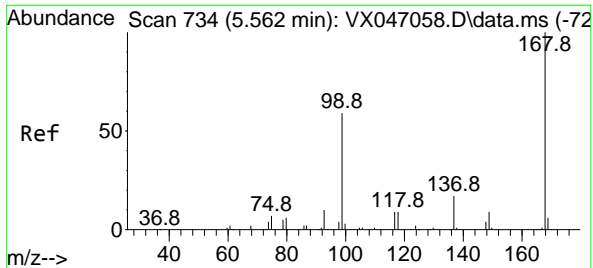
(#) = qualifier out of range (m) = manual integration (+) = signals summed

Data Path : Z:\voasrv\HPCHEM1\MSVOA_X\Data\VX081425\
 Data File : VX047341.D
 Acq On : 14 Aug 2025 13:58
 Operator : JC/MD
 Sample : Q2814-17RE
 Misc : 5.0mL/MSVOA_X/WATER
 ALS Vial : 7 Sample Multiplier: 1

Instrument :
 MSVOA_X
 ClientSampleId :
 TW-518R-S

Quant Time: Aug 18 01:29:12 2025
 Quant Method : Z:\voasrv\HPCHEM1\MSVOA_X\Method\82X072125W.M
 Quant Title : SW846 8260
 QLast Update : Tue Jul 22 03:59:51 2025
 Response via : Initial Calibration

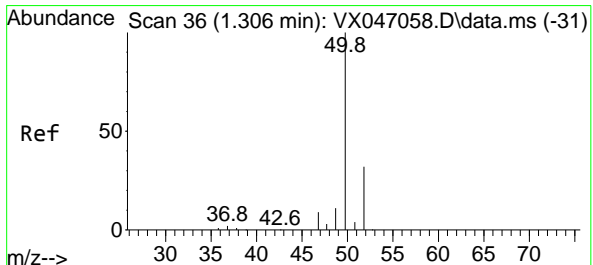
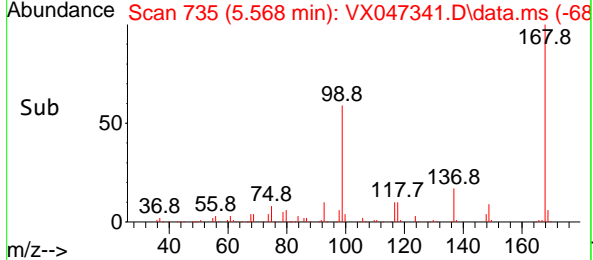
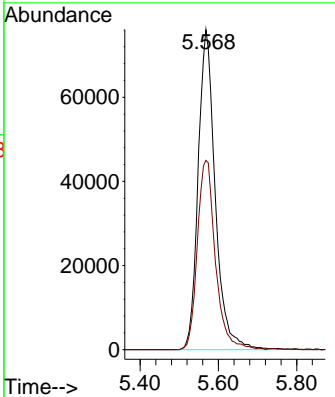
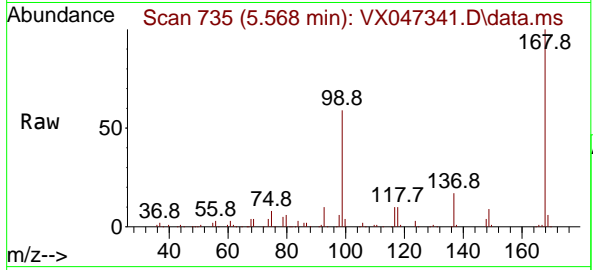




#1
 Pentafluorobenzene
 Concen: 50.000 ug/l
 RT: 5.568 min Scan# 71
 Delta R.T. 0.006 min
 Lab File: VX047341.D
 Acq: 14 Aug 2025 13:58

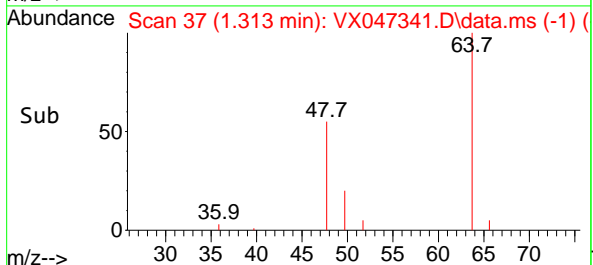
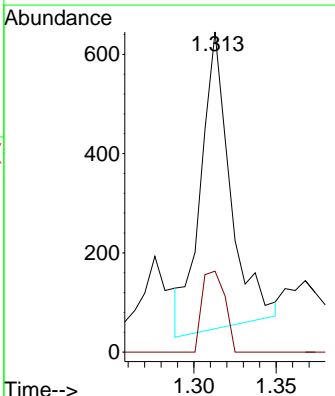
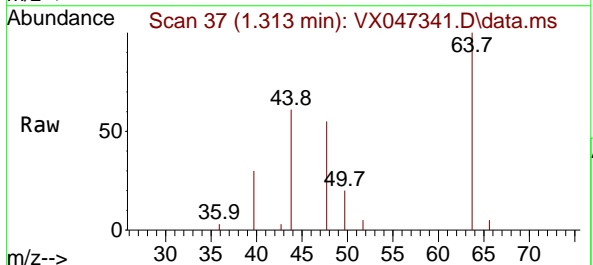
Instrument : MSVOA_X
 ClientSampleId : TW-518R-S

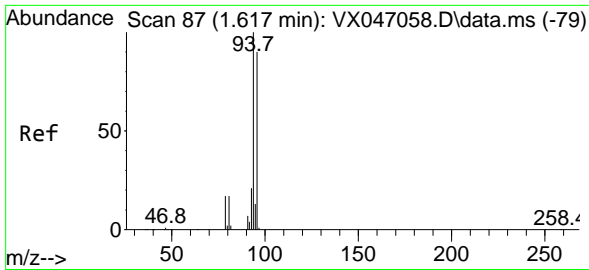
Tgt Ion:168 Resp: 230111
 Ion Ratio Lower Upper
 168 100
 99 59.2 48.0 72.0



#3
 Chloromethane
 Concen: 0.249 ug/l
 RT: 1.313 min Scan# 37
 Delta R.T. 0.007 min
 Lab File: VX047341.D
 Acq: 14 Aug 2025 13:58

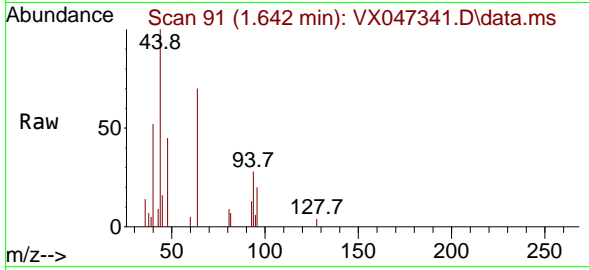
Tgt Ion: 50 Resp: 753
 Ion Ratio Lower Upper
 50 100
 52 30.0 25.4 38.2



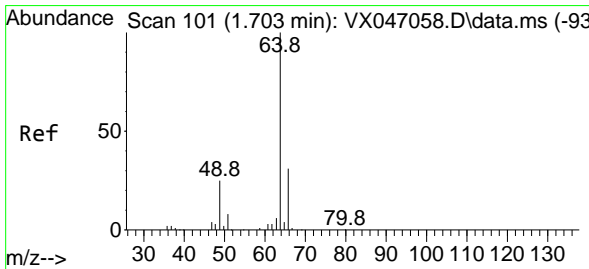
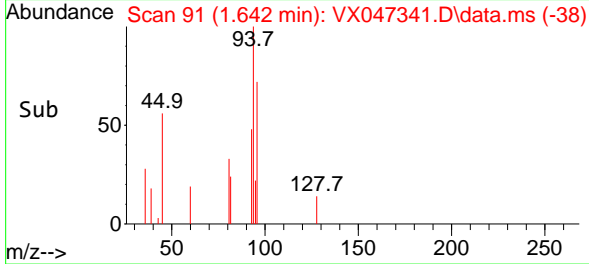
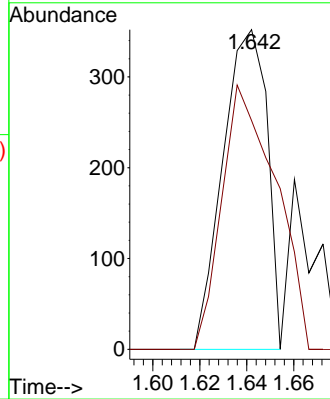


#5
 Bromomethane
 Concen: 0.261 ug/l
 RT: 1.642 min Scan# 91
 Delta R.T. 0.025 min
 Lab File: VX047341.D
 Acq: 14 Aug 2025 13:58

Instrument :
 MSVOA_X
 ClientSampleId :
 TW-518R-S

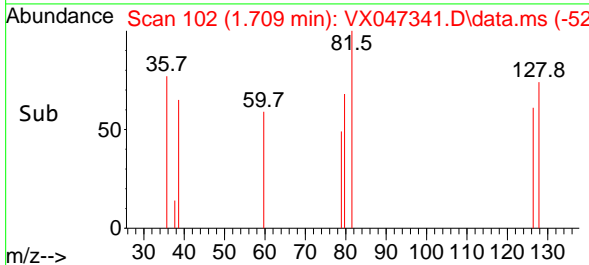
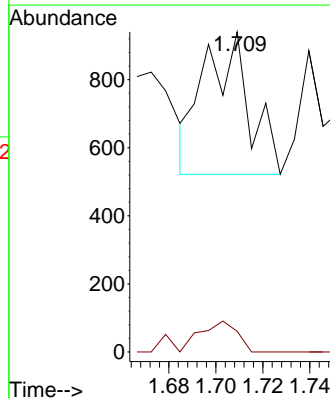
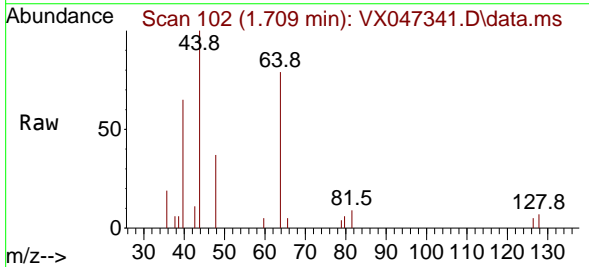


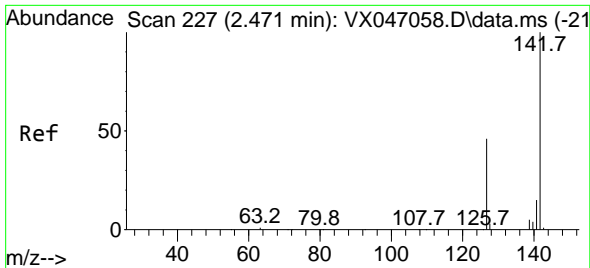
Tgt Ion: 94 Resp: 461
 Ion Ratio Lower Upper
 94 100
 96 71.6 72.3 108.5#



#6
 Chloroethane
 Concen: 0.261 ug/l
 RT: 1.709 min Scan# 102
 Delta R.T. 0.007 min
 Lab File: VX047341.D
 Acq: 14 Aug 2025 13:58

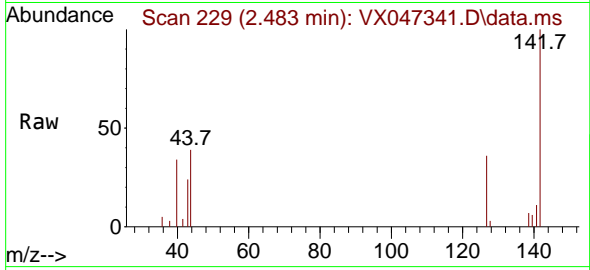
Tgt Ion: 64 Resp: 557
 Ion Ratio Lower Upper
 64 100
 66 14.6 25.0 37.6#



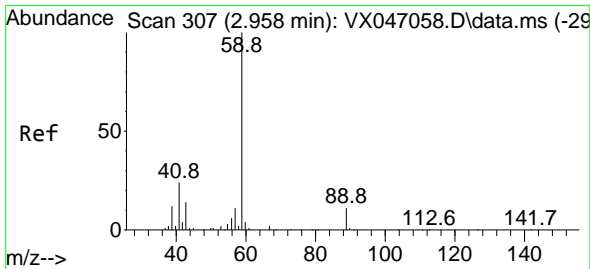
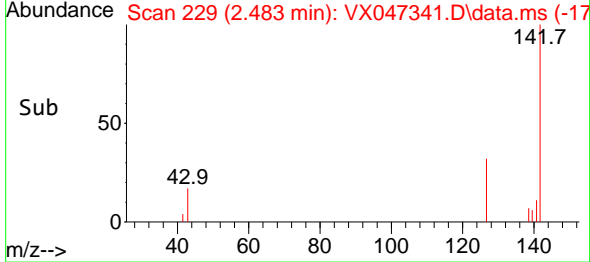
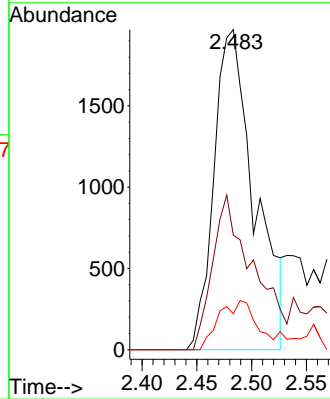


#10
 Methyl Iodide
 Concen: 1.705 ug/l
 RT: 2.483 min Scan# 21
 Delta R.T. 0.013 min
 Lab File: VX047341.D
 Acq: 14 Aug 2025 13:58

Instrument : MSVOA_X
 ClientSampleId : TW-518R-S

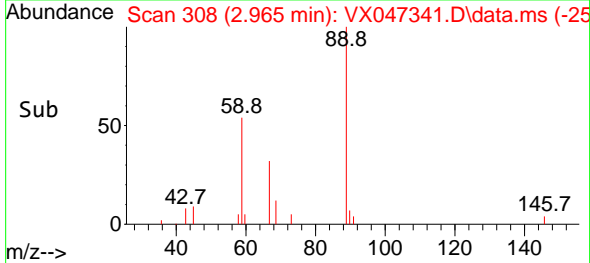
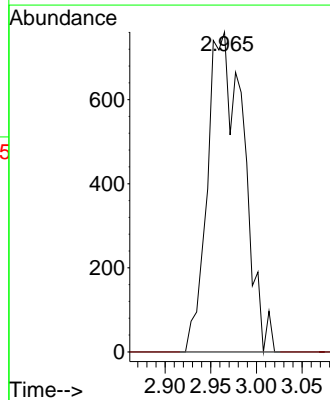
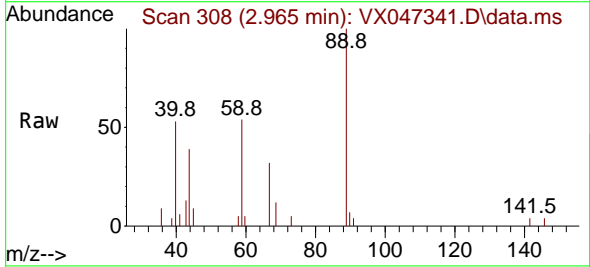


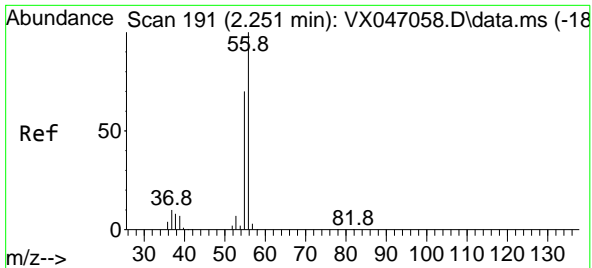
Tgt Ion:142 Resp: 5075
 Ion Ratio Lower Upper
 142 100
 127 48.9 36.6 54.8
 141 14.1 10.9 16.3



#11
 Tert butyl alcohol
 Concen: Below Cal
 RT: 2.965 min Scan# 308
 Delta R.T. 0.007 min
 Lab File: VX047341.D
 Acq: 14 Aug 2025 13:58

Tgt Ion: 59 Resp: 2088
 Ion Ratio Lower Upper
 59 100
 57 0.0 8.5 12.7#

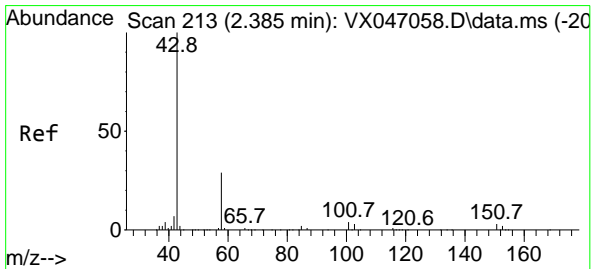
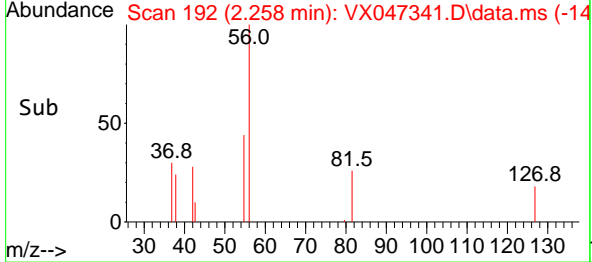
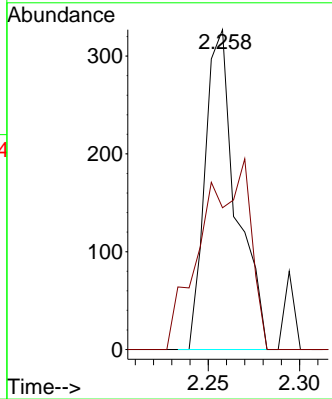
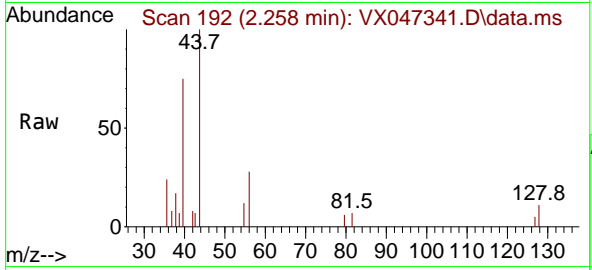




#13
 Acrolein
 Concen: 0.632 ug/l
 RT: 2.258 min Scan# 191
 Delta R.T. 0.007 min
 Lab File: VX047341.D
 Acq: 14 Aug 2025 13:58

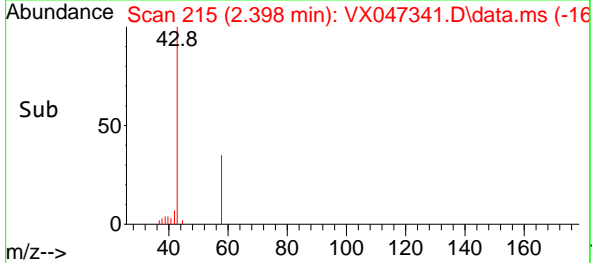
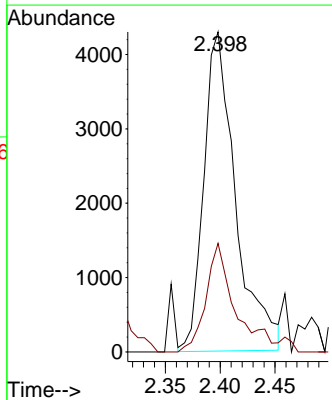
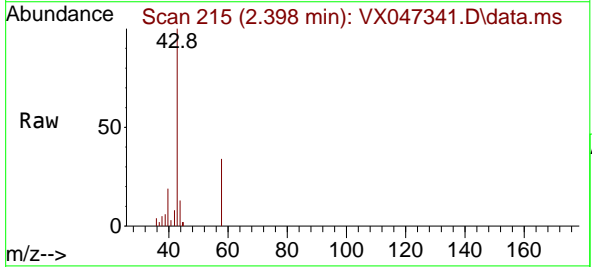
Instrument : MSVOA_X
 ClientSampleId : TW-518R-S

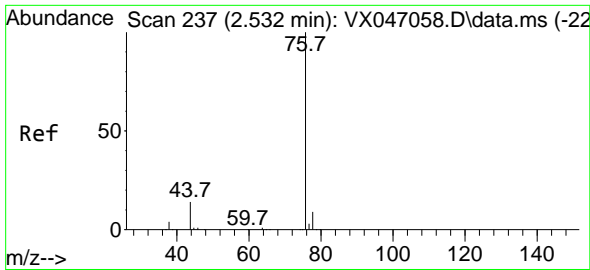
Tgt Ion: 56 Resp: 390
 Ion Ratio Lower Upper
 56 100
 55 91.0 55.7 83.5#



#16
 Acetone
 Concen: 7.552 ug/l
 RT: 2.398 min Scan# 215
 Delta R.T. 0.013 min
 Lab File: VX047341.D
 Acq: 14 Aug 2025 13:58

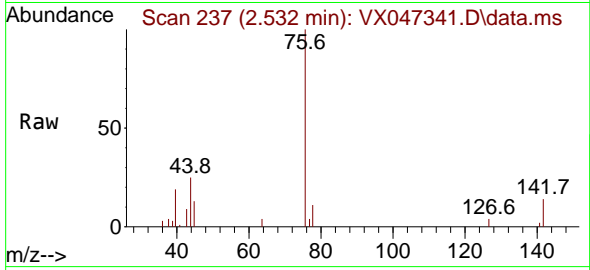
Tgt Ion: 43 Resp: 8672
 Ion Ratio Lower Upper
 43 100
 58 34.4 24.0 36.0



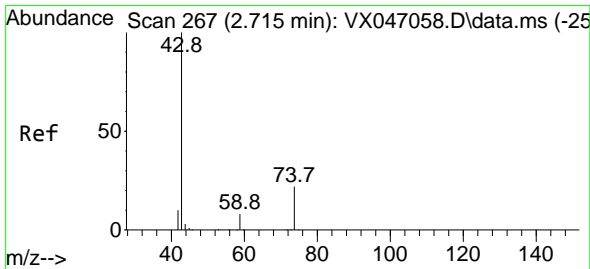
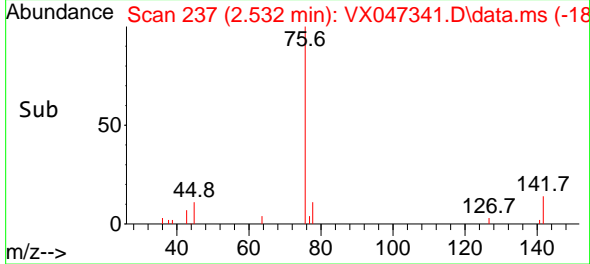
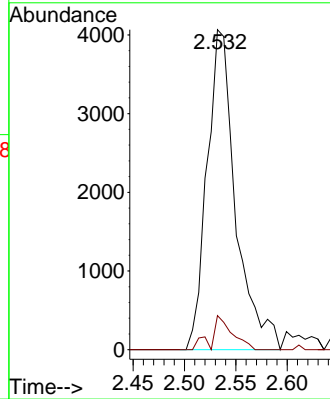


#17
 Carbon Disulfide
 Concen: 0.942 ug/l
 RT: 2.532 min Scan# 211
 Delta R.T. 0.000 min
 Lab File: VX047341.D
 Acq: 14 Aug 2025 13:58

Instrument : MSVOA_X
 ClientSampleId : TW-518R-S

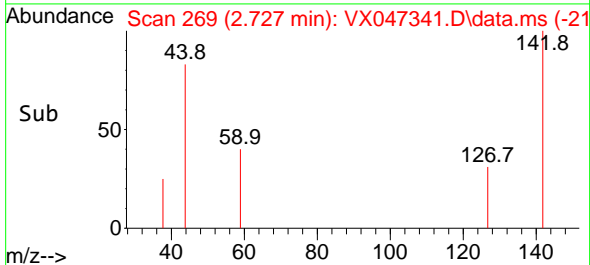
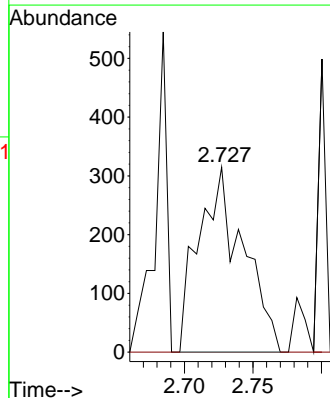
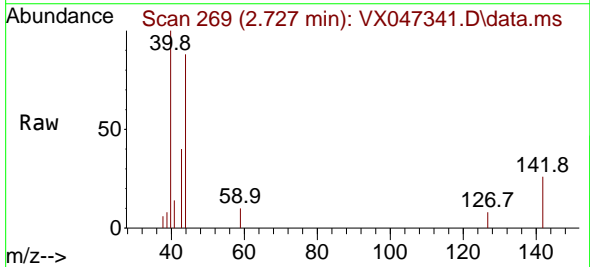


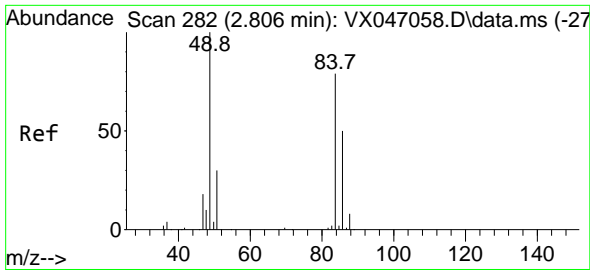
Tgt Ion: 76 Resp: 7883
 Ion Ratio Lower Upper
 76 100
 78 10.7 7.0 10.4#



#18
 Methyl Acetate
 Concen: 0.233 ug/l
 RT: 2.727 min Scan# 269
 Delta R.T. 0.013 min
 Lab File: VX047341.D
 Acq: 14 Aug 2025 13:58

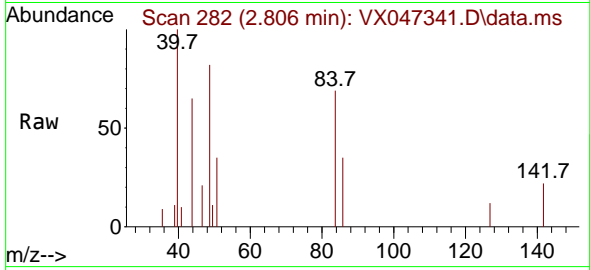
Tgt Ion: 43 Resp: 712
 Ion Ratio Lower Upper
 43 100
 74 0.0 17.7 26.5#





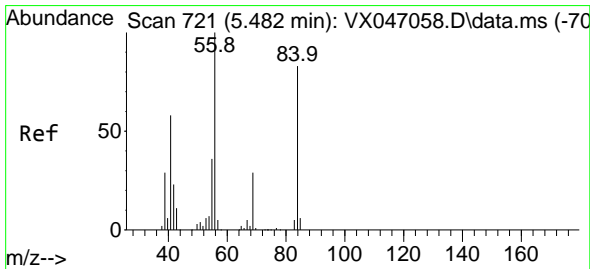
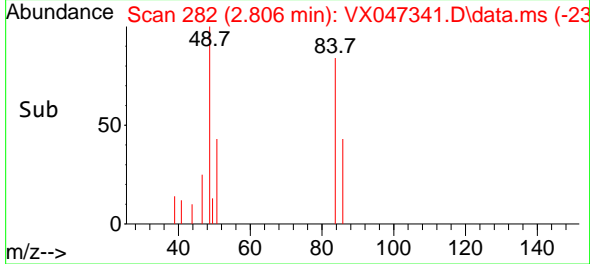
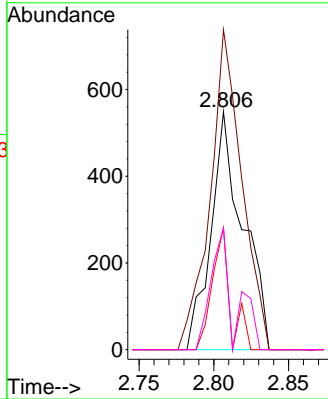
#20
 Methylene Chloride
 Concen: 0.258 ug/l
 RT: 2.806 min Scan# 21
 Delta R.T. 0.000 min
 Lab File: VX047341.D
 Acq: 14 Aug 2025 13:58

Instrument :
 MSVOA_X
 ClientSampleId :
 TW-518R-S



Tgt Ion: 84 Resp: 814

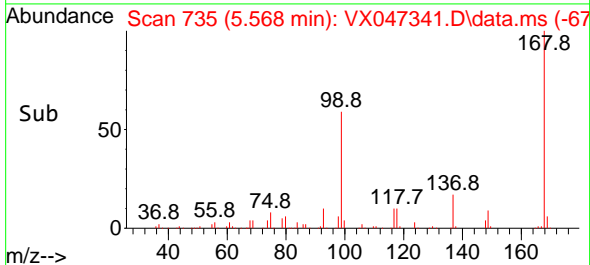
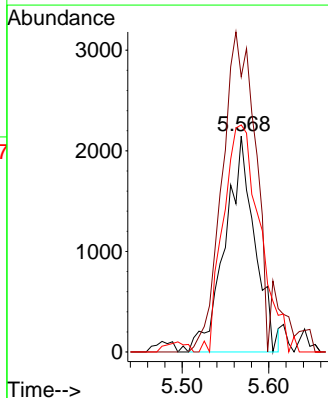
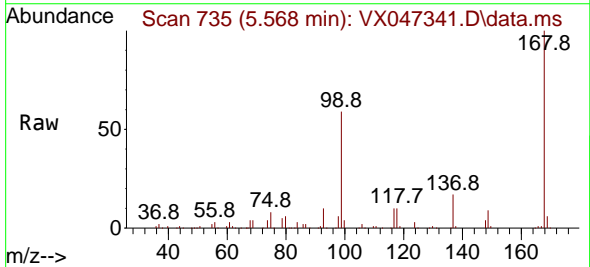
Ion	Ratio	Lower	Upper
84	100		
49	134.4	101.6	152.4
51	51.2	30.3	45.5#
86	51.2	50.6	75.8

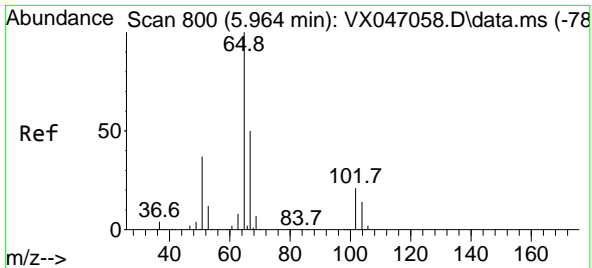


#31
 Cyclohexane
 Concen: 0.954 ug/l
 RT: 5.568 min Scan# 735
 Delta R.T. 0.086 min
 Lab File: VX047341.D
 Acq: 14 Aug 2025 13:58

Tgt Ion: 56 Resp: 5112

Ion	Ratio	Lower	Upper
56	100		
69	123.0	23.3	34.9#
84	97.0	66.5	99.7

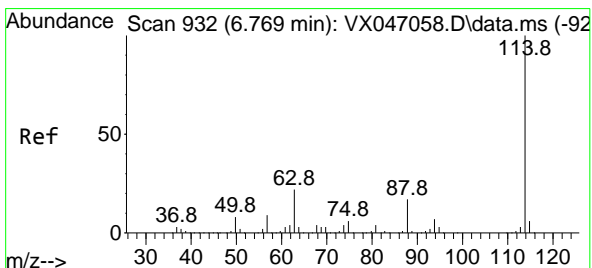
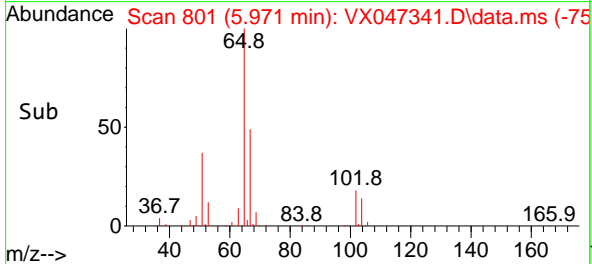
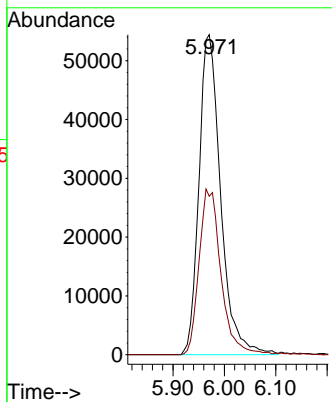
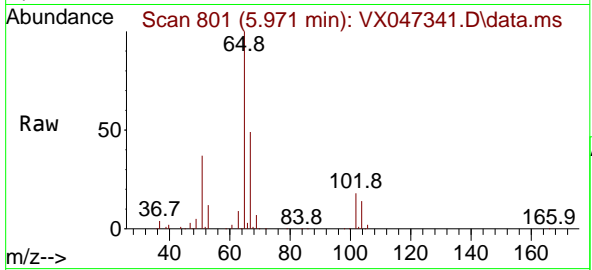




#33
 1,2-Dichloroethane-d4
 Concen: 55.677 ug/l
 RT: 5.971 min Scan# 801
 Delta R.T. 0.007 min
 Lab File: VX047341.D
 Acq: 14 Aug 2025 13:58

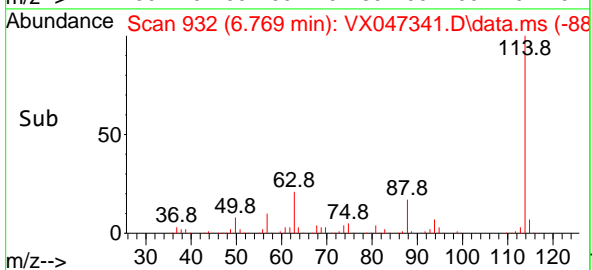
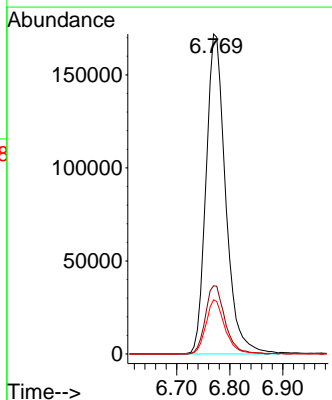
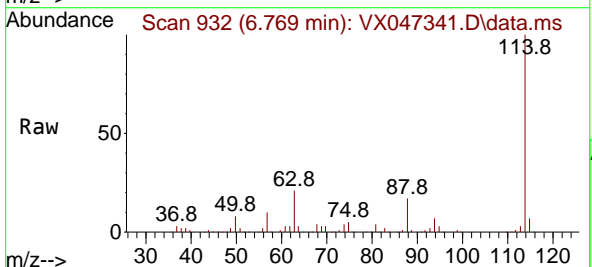
Instrument :
 MSVOA_X
 ClientSampleId :
 TW-518R-S

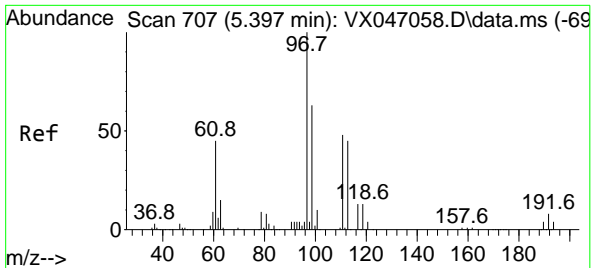
Tgt Ion: 65 Resp: 159597
 Ion Ratio Lower Upper
 65 100
 67 52.2 0.0 104.8



#34
 1,4-Difluorobenzene
 Concen: 50.000 ug/l
 RT: 6.769 min Scan# 932
 Delta R.T. 0.000 min
 Lab File: VX047341.D
 Acq: 14 Aug 2025 13:58

Tgt Ion: 114 Resp: 440338
 Ion Ratio Lower Upper
 114 100
 63 24.5 0.0 43.2
 88 16.9 0.0 33.8



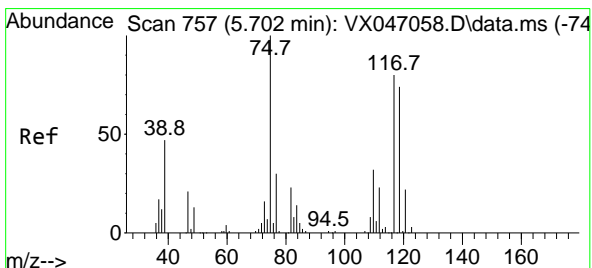
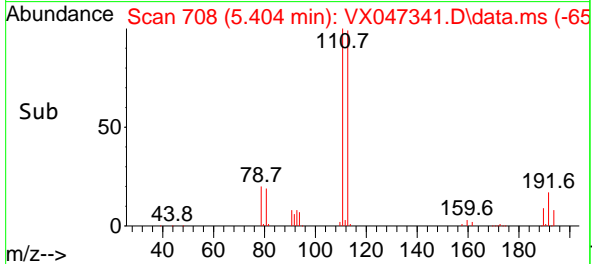
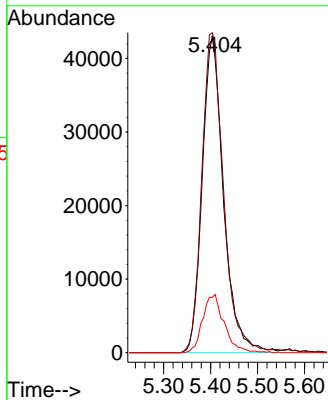
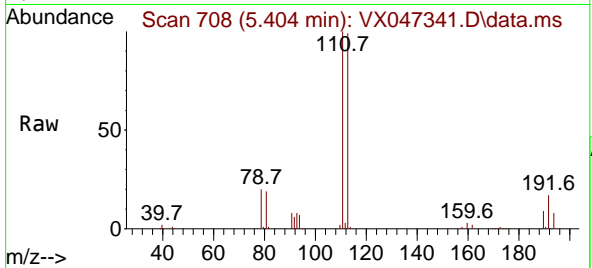


#35
 Dibromofluoromethane
 Concen: 49.648 ug/l
 RT: 5.404 min Scan# 707
 Delta R.T. 0.007 min
 Lab File: VX047341.D
 Acq: 14 Aug 2025 13:58

Instrument : MSVOA_X
 ClientSampleId : TW-518R-S

Tgt Ion:113 Resp: 134982

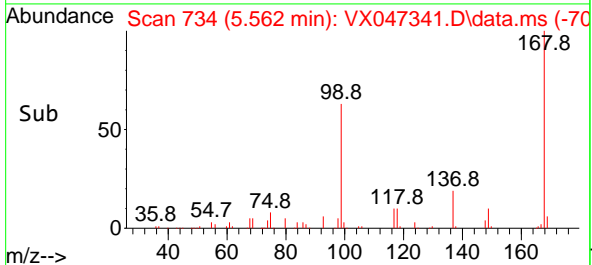
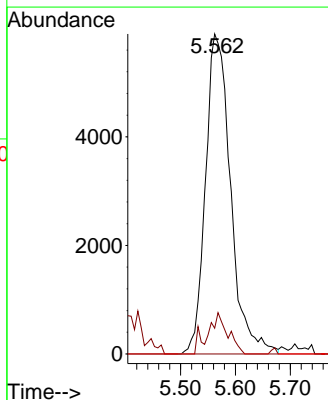
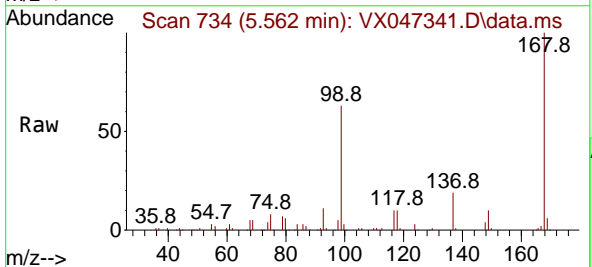
Ion	Ratio	Lower	Upper
113	100		
111	103.9	82.6	124.0
192	18.7	14.9	22.3

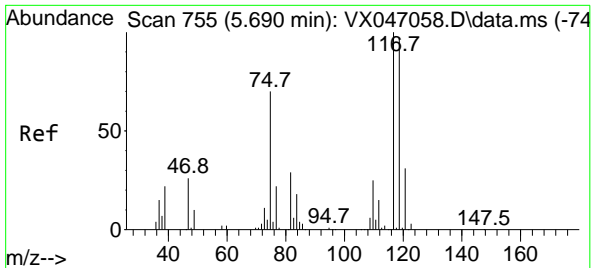


#36
 1,1-Dichloropropene
 Concen: 4.040 ug/l
 RT: 5.562 min Scan# 734
 Delta R.T. -0.140 min
 Lab File: VX047341.D
 Acq: 14 Aug 2025 13:58

Tgt Ion: 75 Resp: 18721

Ion	Ratio	Lower	Upper
75	100		
110	8.6	17.2	51.5#
77	0.0	25.1	37.7#



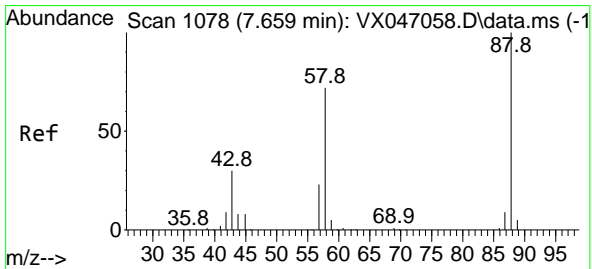
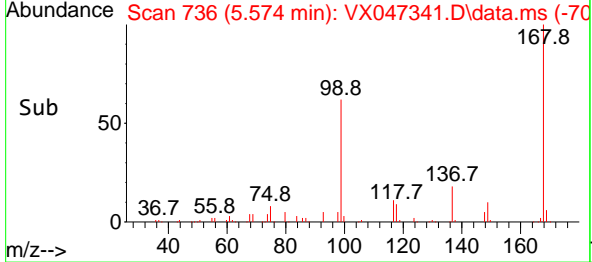
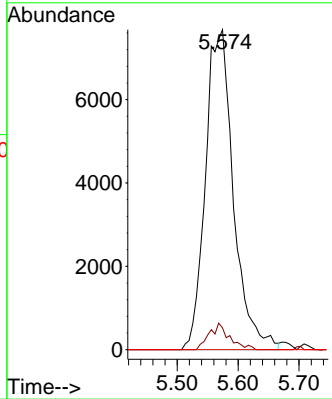
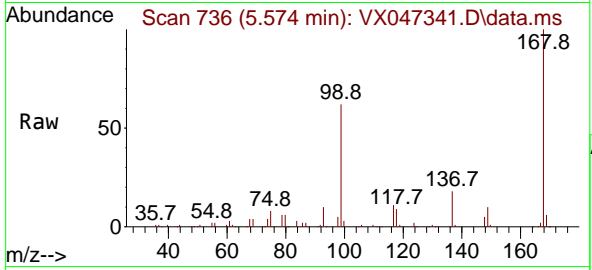


#38
 Carbon Tetrachloride
 Concen: 4.945 ug/l
 RT: 5.574 min Scan# 71
 Delta R.T. -0.115 min
 Lab File: VX047341.D
 Acq: 14 Aug 2025 13:58

Instrument : MSVOA_X
 ClientSampleId : TW-518R-S

Tgt Ion: 117 Resp: 24458

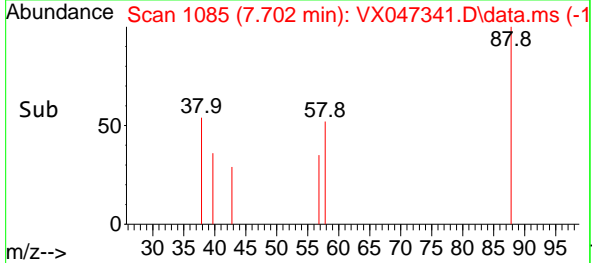
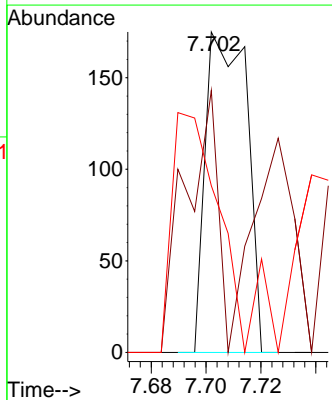
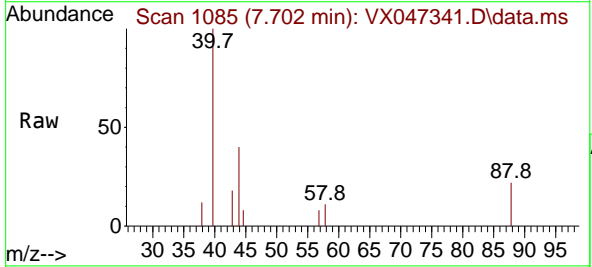
Ion	Ratio	Lower	Upper
117	100		
119	6.8	76.6	115.0#
121	0.0	24.4	36.6#

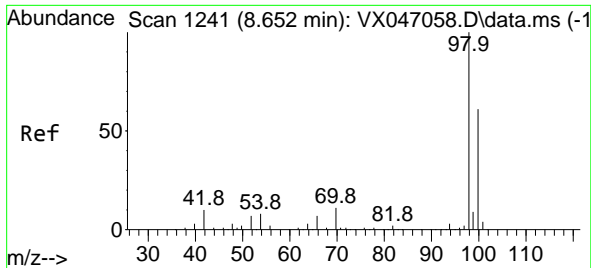


#49
 1,4-Dioxane
 Concen: 4.412 ug/l
 RT: 7.702 min Scan# 1085
 Delta R.T. 0.043 min
 Lab File: VX047341.D
 Acq: 14 Aug 2025 13:58

Tgt Ion: 88 Resp: 182

Ion	Ratio	Lower	Upper
88	100		
43	64.3	33.6	50.4#
58	83.5	58.8	88.2

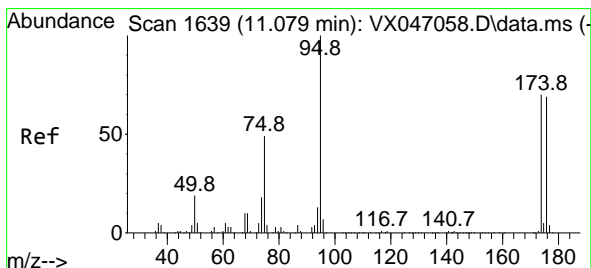
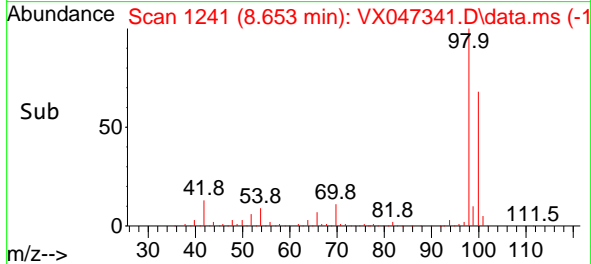
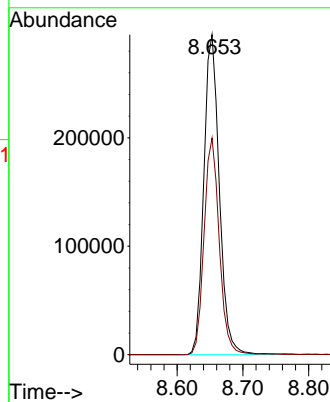
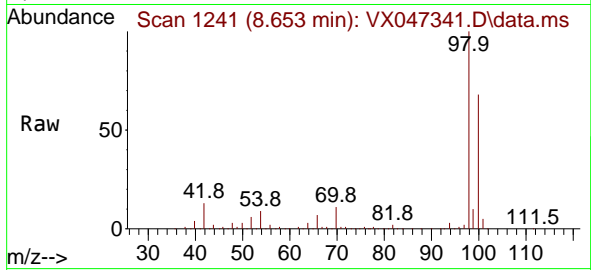




#50
 Toluene-d8
 Concen: 54.963 ug/l
 RT: 8.653 min Scan# 11
 Delta R.T. 0.000 min
 Lab File: VX047341.D
 Acq: 14 Aug 2025 13:58

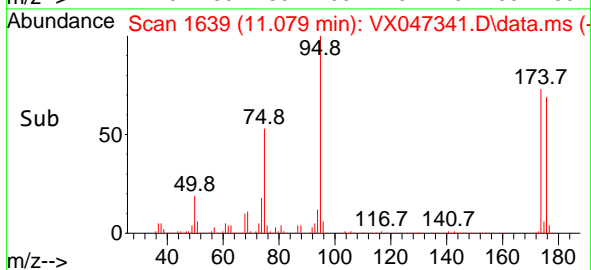
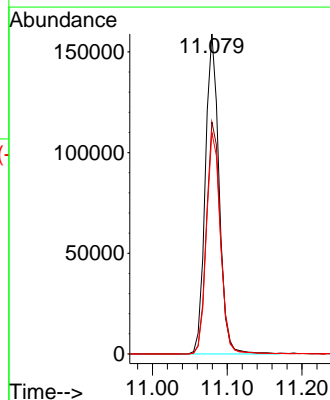
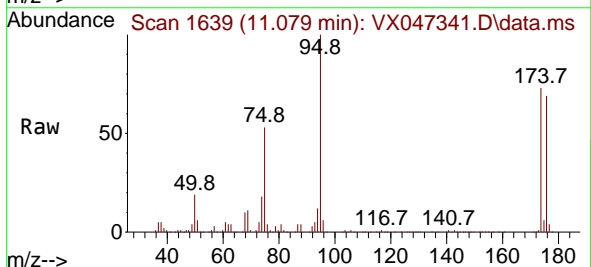
Instrument :
 MSVOA_X
 ClientSampleId :
 TW-518R-S

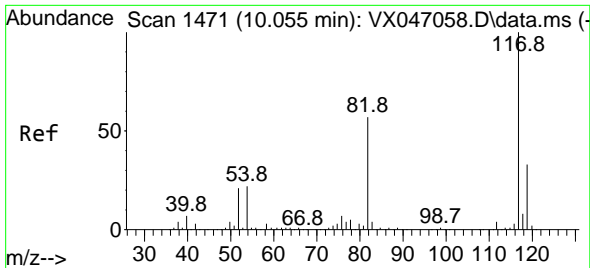
Tgt Ion: 98 Resp: 483933
 Ion Ratio Lower Upper
 98 100
 100 66.6 53.3 79.9



#62
 4-Bromofluorobenzene
 Concen: 53.412 ug/l
 RT: 11.079 min Scan# 1639
 Delta R.T. 0.000 min
 Lab File: VX047341.D
 Acq: 14 Aug 2025 13:58

Tgt Ion: 95 Resp: 202666
 Ion Ratio Lower Upper
 95 100
 174 73.9 0.0 144.6
 176 70.5 0.0 139.6



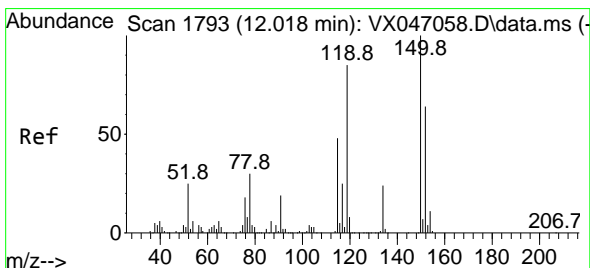
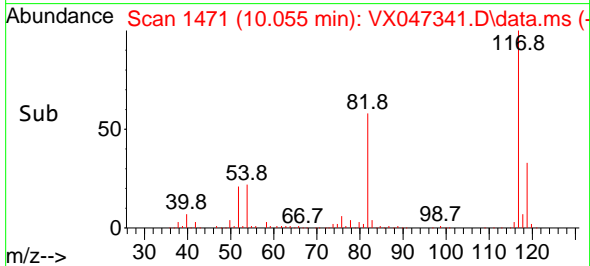
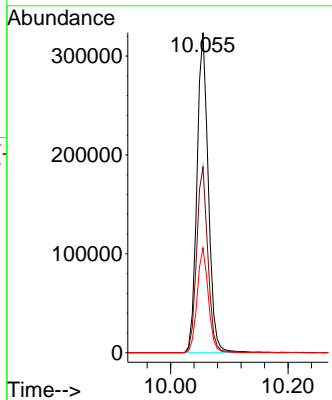
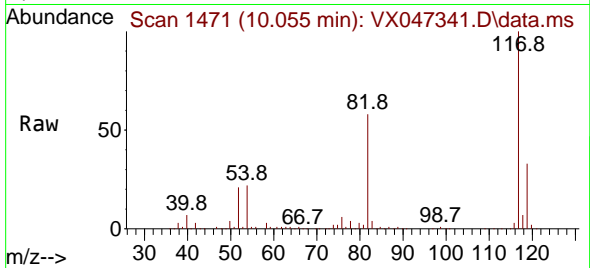


#63
 Chlorobenzene-d5
 Concen: 50.000 ug/l
 RT: 10.055 min Scan# 14
 Delta R.T. 0.000 min
 Lab File: VX047341.D
 Acq: 14 Aug 2025 13:58

Instrument :
 MSVOA_X
 ClientSampleId :
 TW-518R-S

Tgt Ion:117 Resp: 435075

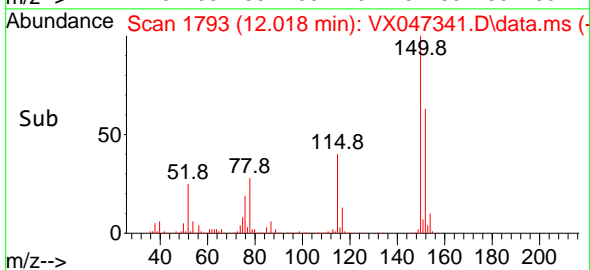
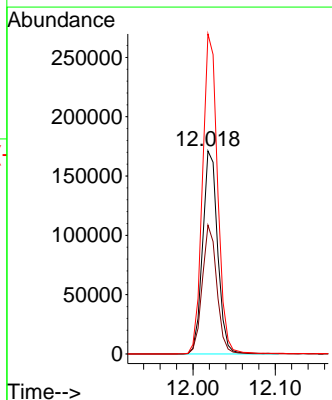
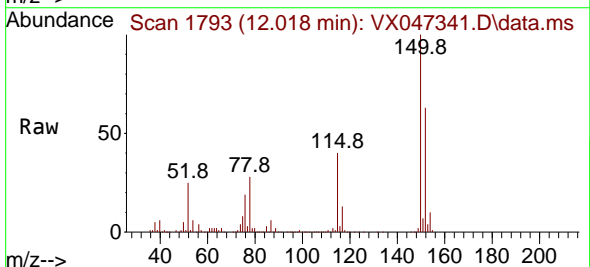
Ion	Ratio	Lower	Upper
117	100		
82	58.0	45.4	68.2
119	32.8	26.1	39.1

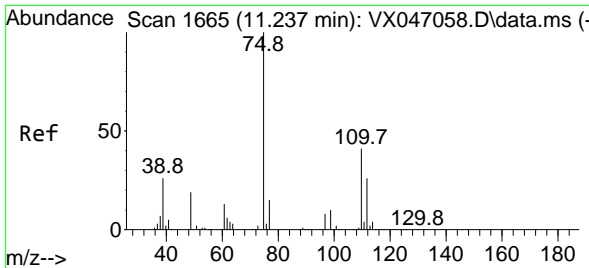


#72
 1,4-Dichlorobenzene-d4
 Concen: 50.000 ug/l
 RT: 12.018 min Scan# 1793
 Delta R.T. 0.000 min
 Lab File: VX047341.D
 Acq: 14 Aug 2025 13:58

Tgt Ion:152 Resp: 217218

Ion	Ratio	Lower	Upper
152	100		
115	61.6	45.6	136.7
150	158.4	0.0	354.6

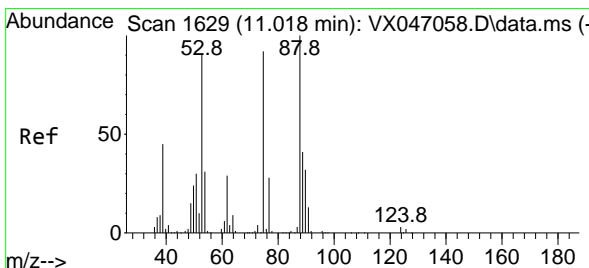
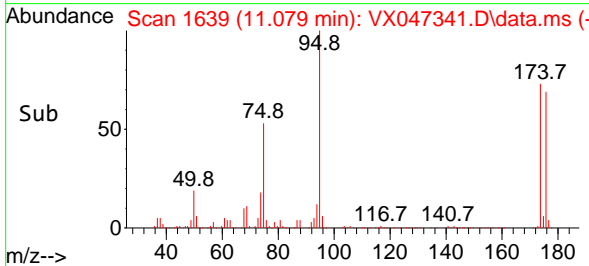
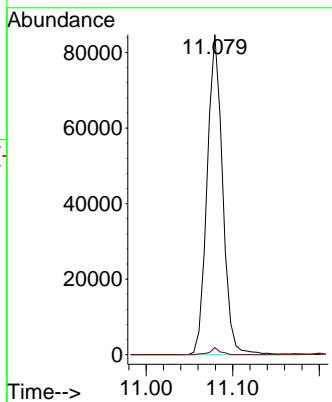
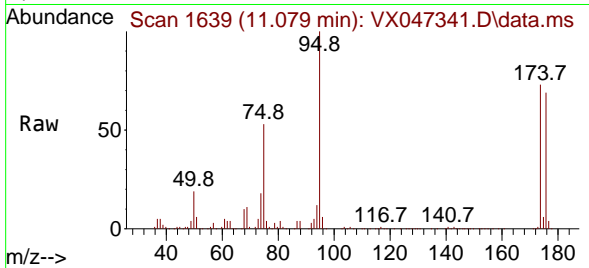




#76
 1,2,3-Trichloropropane
 Concen: 26.191 ug/l
 RT: 11.079 min Scan# 1639
 Delta R.T. -0.158 min
 Lab File: VX047341.D
 Acq: 14 Aug 2025 13:58

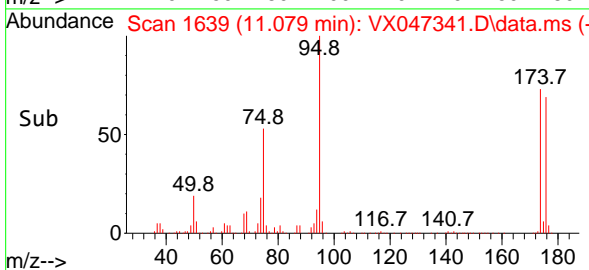
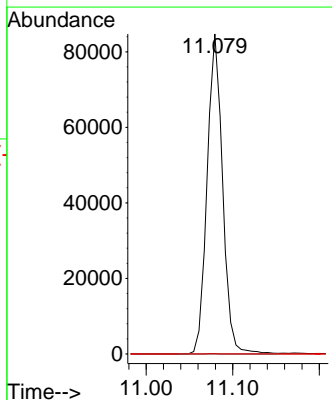
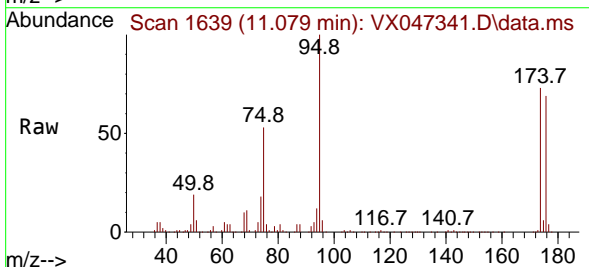
Instrument : MSVOA_X
 ClientSampleId : TW-518R-S

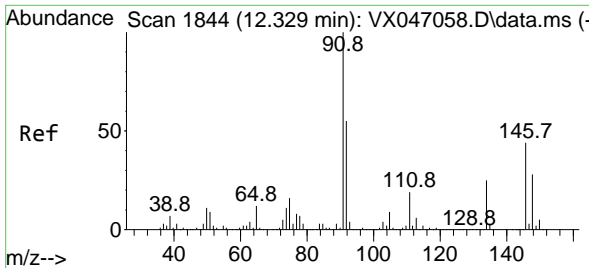
Tgt Ion: 75 Resp: 105305
 Ion Ratio Lower Upper
 75 100
 77 1.5 21.6 65.0#



#81
 trans-1,4-Dichloro-2-butene
 Concen: 67.479 ug/l
 RT: 11.079 min Scan# 1639
 Delta R.T. 0.061 min
 Lab File: VX047341.D
 Acq: 14 Aug 2025 13:58

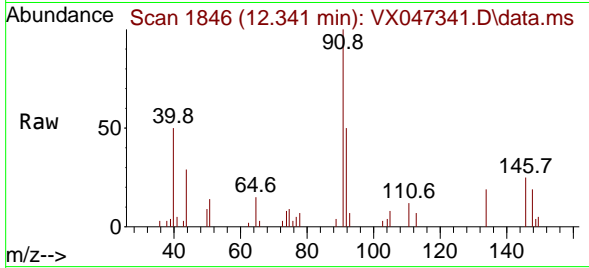
Tgt Ion: 75 Resp: 105305
 Ion Ratio Lower Upper
 75 100
 53 0.1 84.2 126.4#
 89 0.0 36.0 54.0#





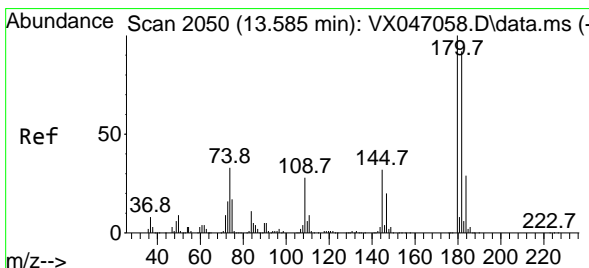
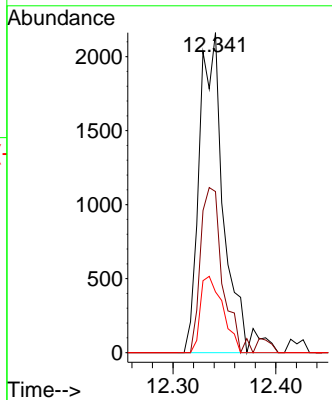
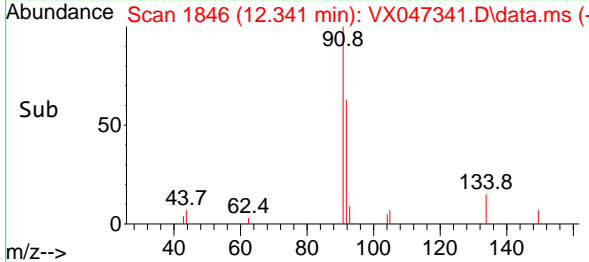
#89
 n-Butylbenzene
 Concen: 0.261 ug/l
 RT: 12.341 min Scan# 1846
 Delta R.T. 0.013 min
 Lab File: VX047341.D
 Acq: 14 Aug 2025 13:58

Instrument : MSVOA_X
 ClientSampleId : TW-518R-S

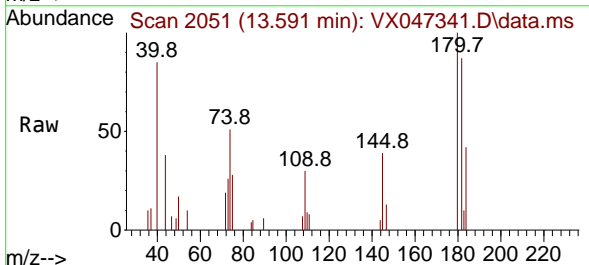


Tgt Ion: 91 Resp: 3605

Ion	Ratio	Lower	Upper
91	100		
92	46.3	27.5	82.5
134	21.7	12.8	38.3

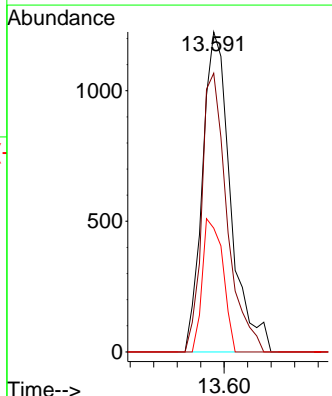
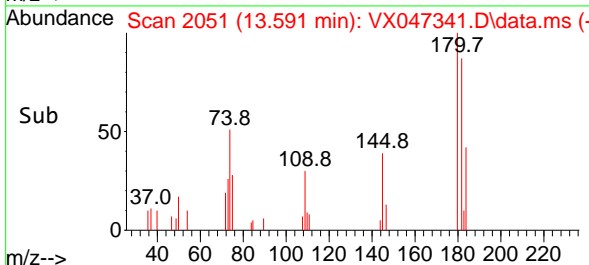


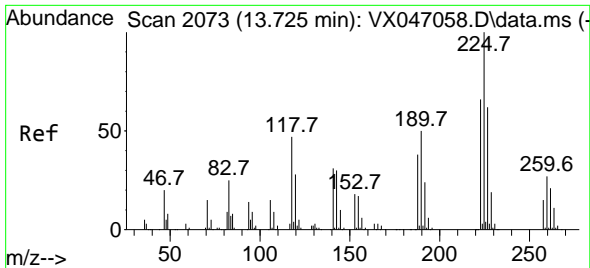
#93
 1,2,4-Trichlorobenzene
 Concen: 0.413 ug/l
 RT: 13.591 min Scan# 2051
 Delta R.T. 0.007 min
 Lab File: VX047341.D
 Acq: 14 Aug 2025 13:58



Tgt Ion: 180 Resp: 2037

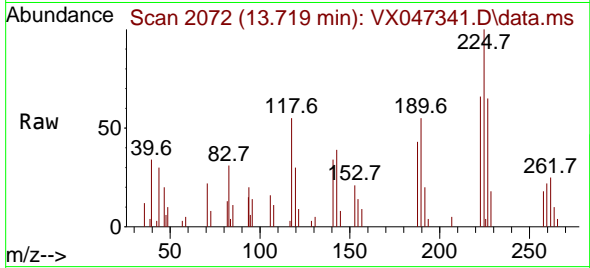
Ion	Ratio	Lower	Upper
180	100		
182	78.1	47.3	141.8
145	30.2	16.4	49.1



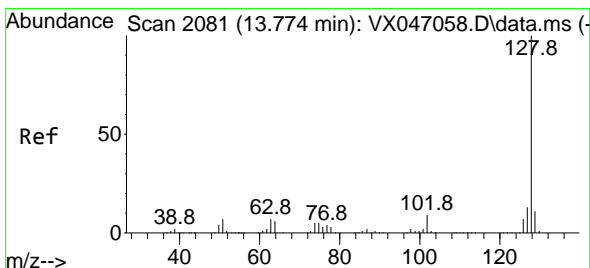
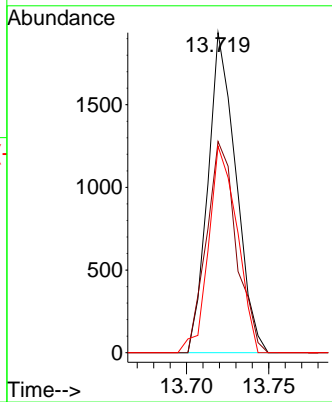
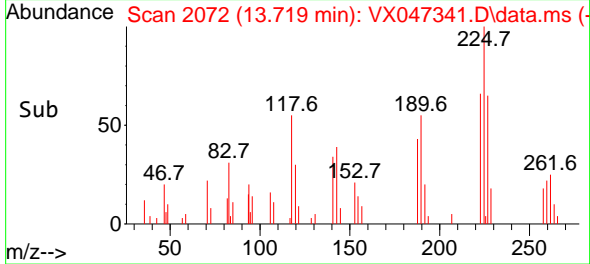


#94
 Hexachlorobutadiene
 Concen: 1.362 ug/l
 RT: 13.719 min Scan# 2072
 Delta R.T. -0.006 min
 Lab File: VX047341.D
 Acq: 14 Aug 2025 13:58

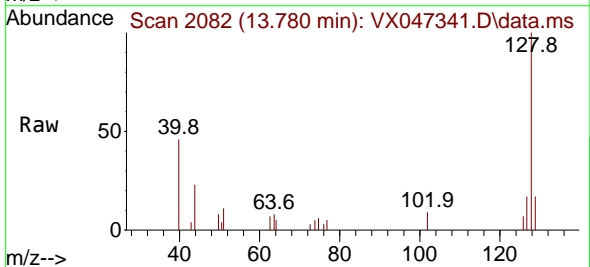
Instrument :
 MSVOA_X
 ClientSampleId :
 TW-518R-S



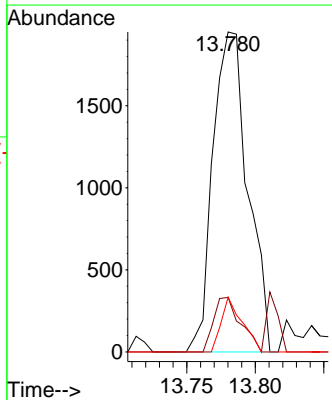
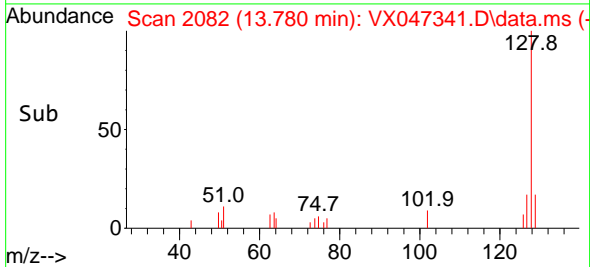
Tgt Ion:225 Resp: 2284
 Ion Ratio Lower Upper
 225 100
 223 70.3 31.6 95.0
 227 65.9 32.9 98.6

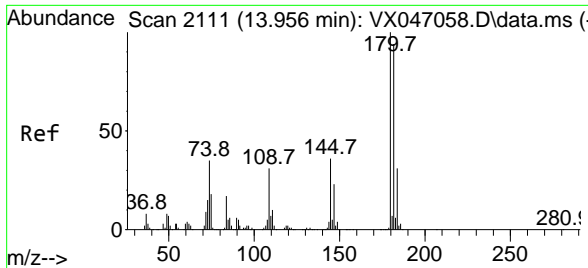


#95
 Naphthalene
 Concen: 0.239 ug/l
 RT: 13.780 min Scan# 2082
 Delta R.T. 0.007 min
 Lab File: VX047341.D
 Acq: 14 Aug 2025 13:58



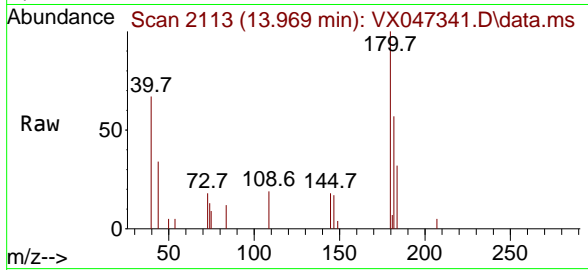
Tgt Ion:128 Resp: 3457
 Ion Ratio Lower Upper
 128 100
 127 13.1 10.1 15.1
 129 10.2 8.6 13.0





#96
 1,2,3-Trichlorobenzene
 Concen: 0.340 ug/l
 RT: 13.969 min Scan# 21
 Delta R.T. 0.013 min
 Lab File: VX047341.D
 Acq: 14 Aug 2025 13:58

Instrument :
 MSVOA_X
 ClientSampleId :
 TW-518R-S



Tgt Ion:180 Resp: 1617

Ion	Ratio	Lower	Upper
180	100		
182	94.1	46.9	140.6
145	30.0	17.3	52.0

