

Data Path : Z:\voasrv\HPCHEM1\MSVOA_X\Data\VX081425\
 Data File : VX047344.D
 Acq On : 14 Aug 2025 17:05
 Operator : JC/MD
 Sample : Q2814-18RE
 Misc : 5.0mL/MSVOA_X/WATER
 ALS Vial : 10 Sample Multiplier: 1

Instrument :
 MSVOA_X
 ClientSampleId :
 TW-518R-NRE

Quant Time: Aug 18 01:31:17 2025
 Quant Method : Z:\voasrv\HPCHEM1\MSVOA_X\Method\82X072125W.M
 Quant Title : SW846 8260
 QLast Update : Tue Jul 22 03:59:51 2025
 Response via : Initial Calibration

Compound	R.T.	QIon	Response	Conc	Units	Dev(Min)

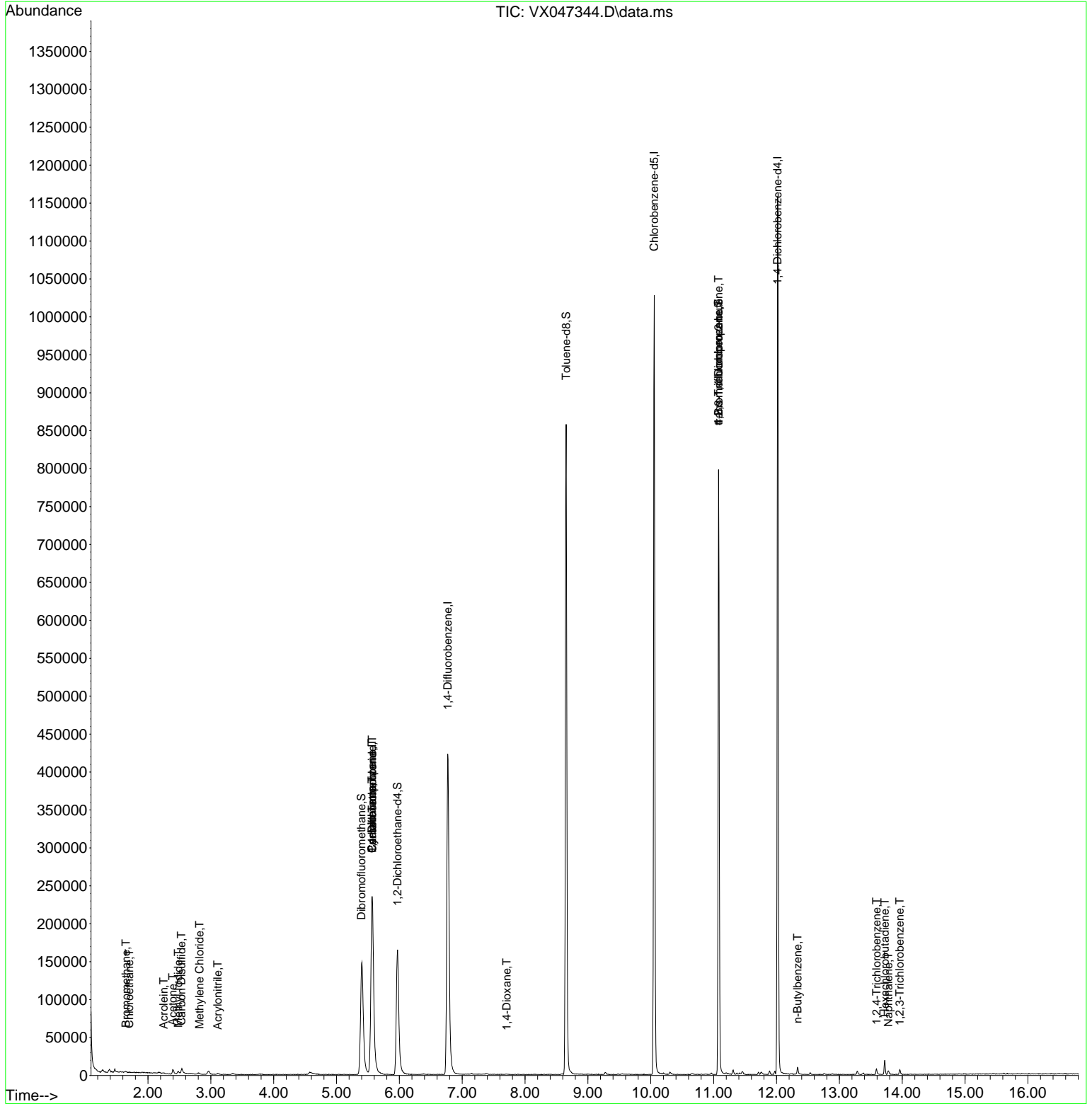
Internal Standards						
1) Pentafluorobenzene	5.568	168	238899	50.000	ug/l	0.00
34) 1,4-Difluorobenzene	6.769	114	455924	50.000	ug/l	0.00
63) Chlorobenzene-d5	10.055	117	448067	50.000	ug/l	0.00
72) 1,4-Dichlorobenzene-d4	12.018	152	229471	50.000	ug/l	0.00
System Monitoring Compounds						
33) 1,2-Dichloroethane-d4	5.970	65	173521	58.308	ug/l	0.00
Spiked Amount	50.000	Range 78 - 117	Recovery	=	116.620%	
35) Dibromofluoromethane	5.397	113	140972	50.078	ug/l	0.00
Spiked Amount	50.000	Range 75 - 124	Recovery	=	100.160%	
50) Toluene-d8	8.653	98	515123	56.505	ug/l	0.00
Spiked Amount	50.000	Range 92 - 112	Recovery	=	113.020%#	
62) 4-Bromofluorobenzene	11.079	95	214862	54.691	ug/l	0.00
Spiked Amount	50.000	Range 83 - 123	Recovery	=	109.380%	
Target Compounds						
						Qvalue
5) Bromomethane	1.648	94	754	0.411	ug/l	84
6) Chloroethane	1.703	64	801	0.361	ug/l #	43
10) Methyl Iodide	2.483	142	5081	1.645	ug/l	91
11) Tert butyl alcohol	2.965	59	2378	Below Cal	#	75
13) Acrolein	2.251	56	491	0.766	ug/l	93
15) Acrylonitrile	3.111	53	547	0.385	ug/l #	18
16) Acetone	2.392	43	8602	7.215	ug/l	99
17) Carbon Disulfide	2.532	76	4367	0.503	ug/l	99
20) Methylene Chloride	2.818	84	763	0.233	ug/l #	75
31) Cyclohexane	5.562	56	6102	1.097	ug/l #	26
36) 1,1-Dichloropropene	5.562	75	19895	4.146	ug/l #	51
38) Carbon Tetrachloride	5.568	117	25714	5.021	ug/l #	15
49) 1,4-Dioxane	7.708	88	37	0.866	ug/l #	20
76) 1,2,3-Trichloropropane	11.079	75	111130	26.164	ug/l #	35
81) trans-1,4-Dichloro-2-b...	11.079	75	111130	67.410	ug/l #	8
89) n-Butylbenzene	12.335	91	3808	0.261	ug/l	98
93) 1,2,4-Trichlorobenzene	13.591	180	2036	0.391	ug/l	97
94) Hexachlorobutadiene	13.725	225	2393	1.351	ug/l	94
95) Naphthalene	13.780	128	4579	0.300	ug/l #	95
96) 1,2,3-Trichlorobenzene	13.963	180	1698	0.338	ug/l	82

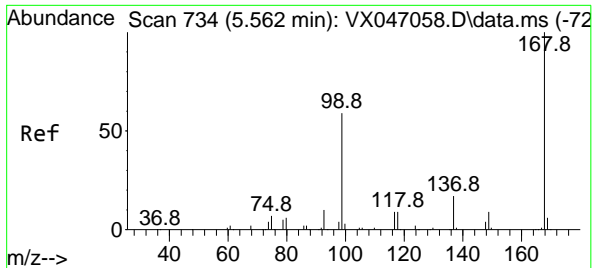
(#) = qualifier out of range (m) = manual integration (+) = signals summed

Data Path : Z:\voasrv\HPCHEM1\MSVOA_X\Data\VX081425\
 Data File : VX047344.D
 Acq On : 14 Aug 2025 17:05
 Operator : JC/MD
 Sample : Q2814-18RE
 Misc : 5.0mL/MSVOA_X/WATER
 ALS Vial : 10 Sample Multiplier: 1

Instrument :
 MSVOA_X
 ClientSampleId :
 TW-518R-NRE

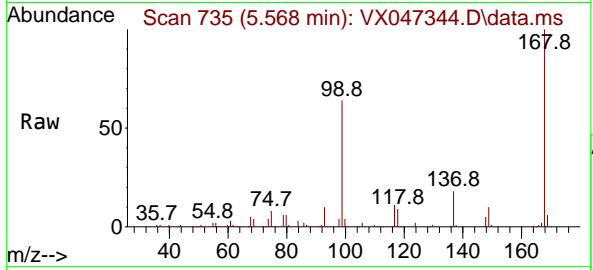
Quant Time: Aug 18 01:31:17 2025
 Quant Method : Z:\voasrv\HPCHEM1\MSVOA_X\Method\82X072125W.M
 Quant Title : SW846 8260
 QLast Update : Tue Jul 22 03:59:51 2025
 Response via : Initial Calibration



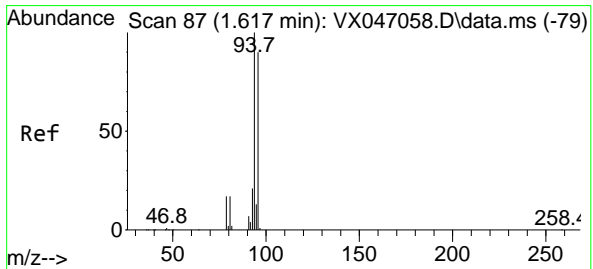
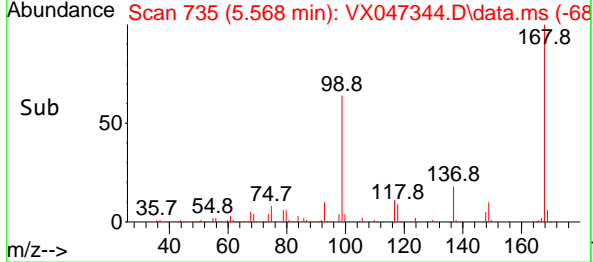
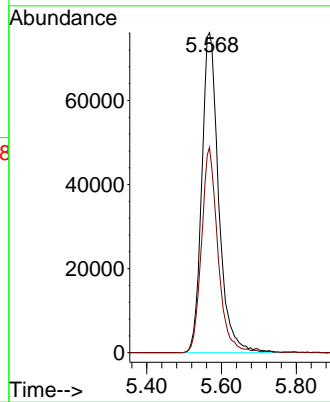


#1
 Pentafluorobenzene
 Concen: 50.000 ug/l
 RT: 5.568 min Scan# 71
 Delta R.T. 0.006 min
 Lab File: VX047344.D
 Acq: 14 Aug 2025 17:05

Instrument : MSVOA_X
 ClientSampleId : TW-518R-NRE

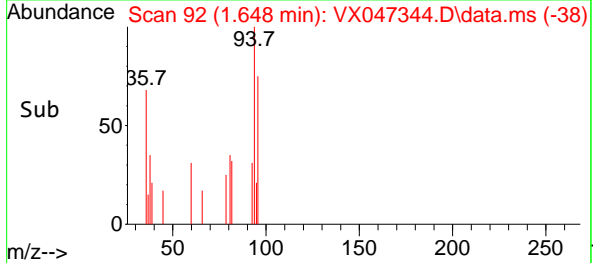
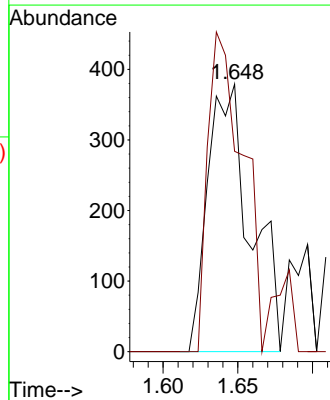
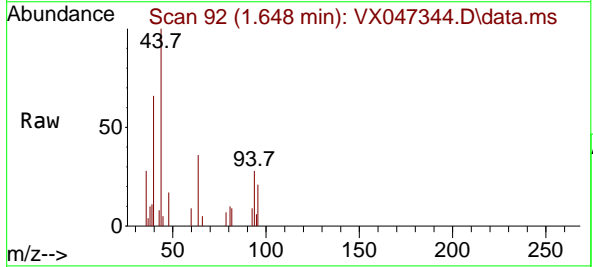


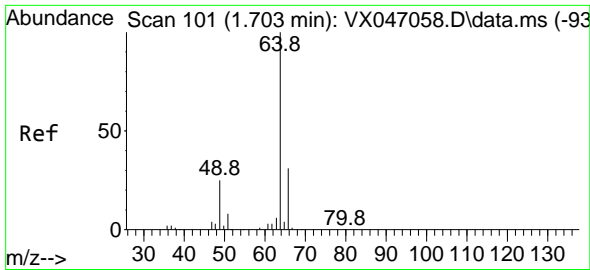
Tgt Ion:168 Resp: 238899
 Ion Ratio Lower Upper
 168 100
 99 64.2 48.0 72.0



#5
 Bromomethane
 Concen: 0.411 ug/l
 RT: 1.648 min Scan# 92
 Delta R.T. 0.031 min
 Lab File: VX047344.D
 Acq: 14 Aug 2025 17:05

Tgt Ion: 94 Resp: 754
 Ion Ratio Lower Upper
 94 100
 96 74.9 72.3 108.5

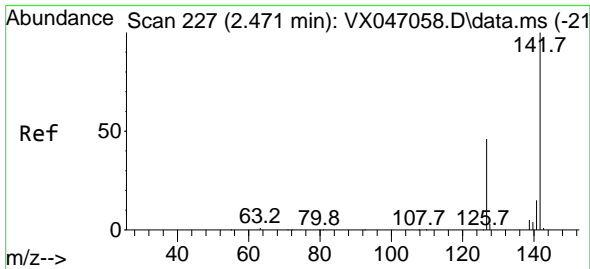
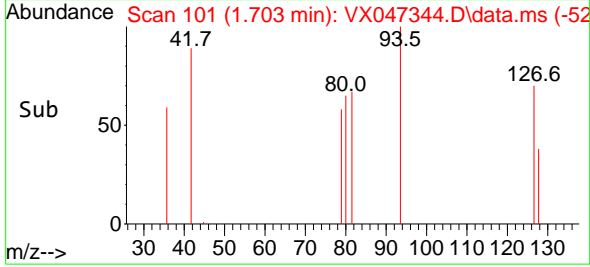
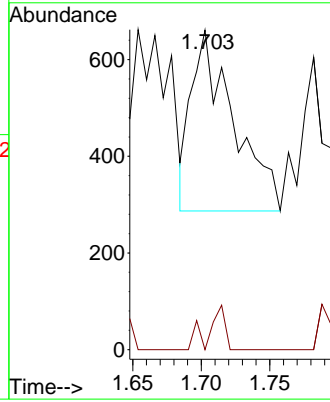
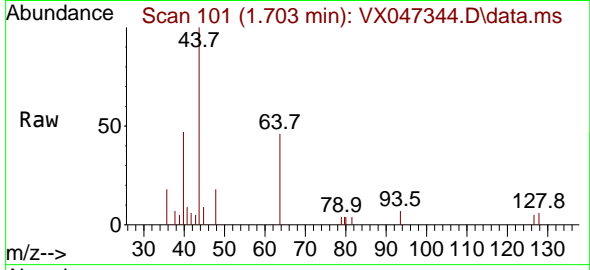




#6
 Chloroethane
 Concen: 0.361 ug/l
 RT: 1.703 min Scan# 101
 Delta R.T. 0.000 min
 Lab File: VX047344.D
 Acq: 14 Aug 2025 17:05

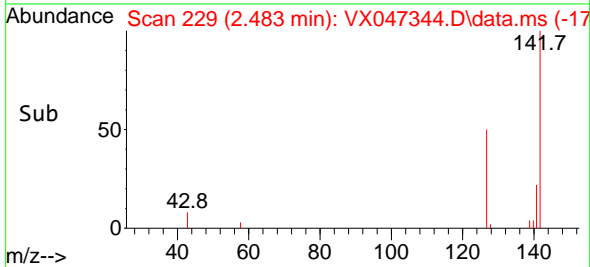
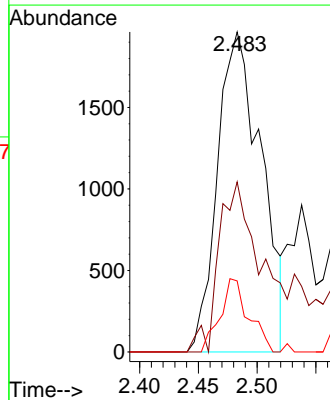
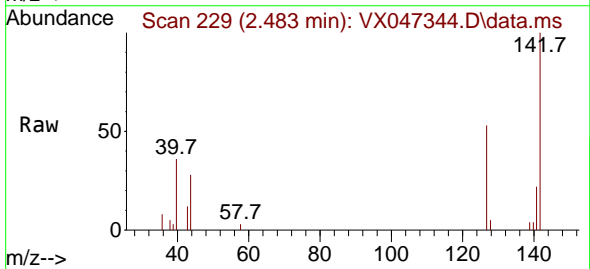
Instrument : MSVOA_X
 ClientSampleId : TW-518R-NRE

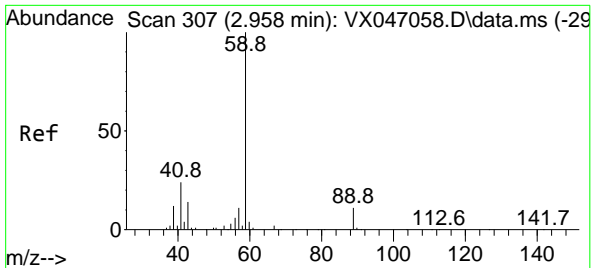
Tgt Ion: 64 Resp: 801
 Ion Ratio Lower Upper
 64 100
 66 0.0 25.0 37.6#



#10
 Methyl Iodide
 Concen: 1.645 ug/l
 RT: 2.483 min Scan# 229
 Delta R.T. 0.012 min
 Lab File: VX047344.D
 Acq: 14 Aug 2025 17:05

Tgt Ion: 142 Resp: 5081
 Ion Ratio Lower Upper
 142 100
 127 52.9 36.6 54.8
 141 15.0 10.9 16.3

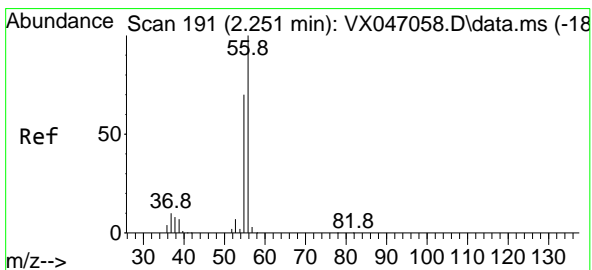
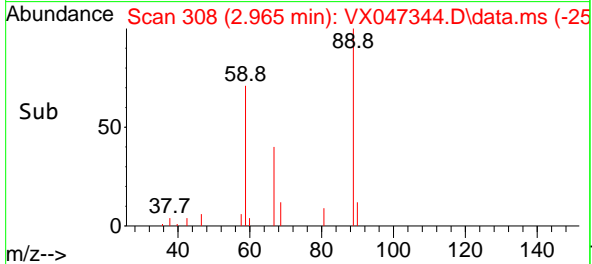
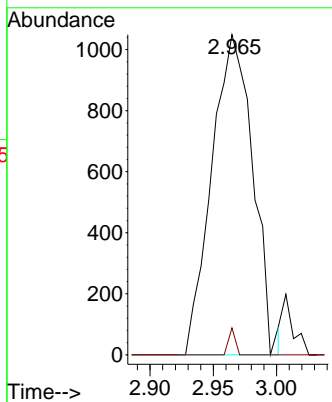
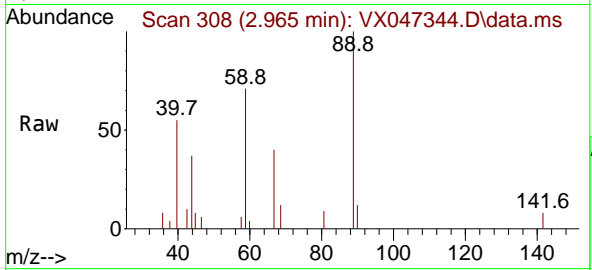




#11
 Tert butyl alcohol
 Concen: Below Cal
 RT: 2.965 min Scan# 307
 Delta R.T. 0.007 min
 Lab File: VX047344.D
 Acq: 14 Aug 2025 17:05

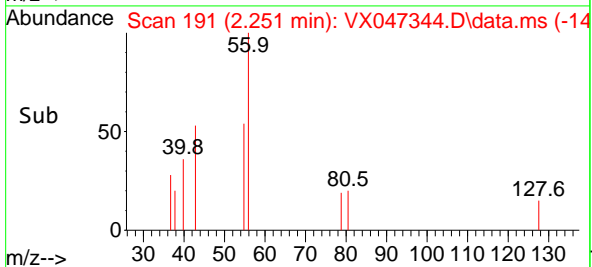
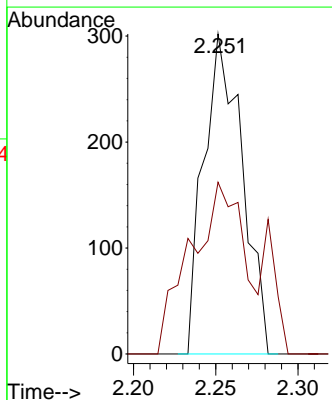
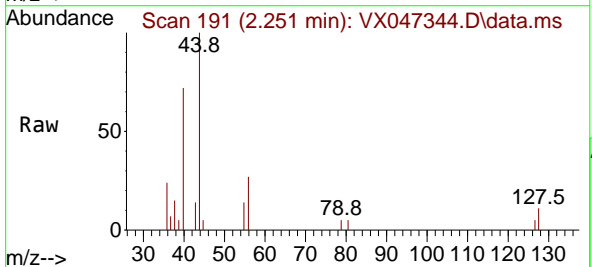
Instrument : MSVOA_X
 ClientSampleId : TW-518R-NRE

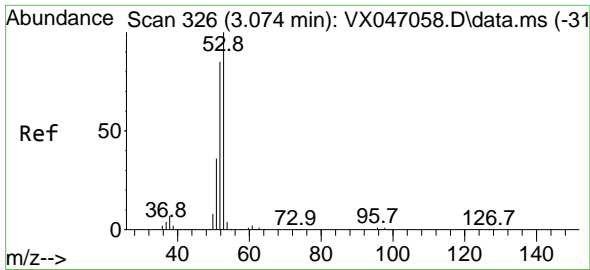
Tgt Ion: 59 Resp: 2378
 Ion Ratio Lower Upper
 59 100
 57 1.3 8.5 12.7#



#13
 Acrolein
 Concen: 0.766 ug/l
 RT: 2.251 min Scan# 191
 Delta R.T. 0.000 min
 Lab File: VX047344.D
 Acq: 14 Aug 2025 17:05

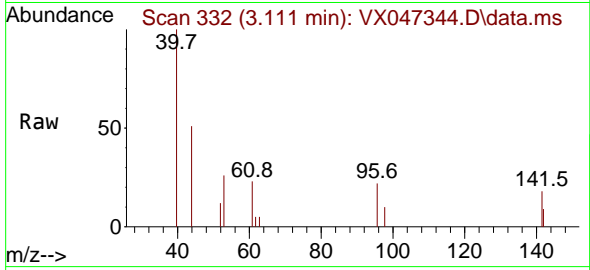
Tgt Ion: 56 Resp: 491
 Ion Ratio Lower Upper
 56 100
 55 74.9 55.7 83.5



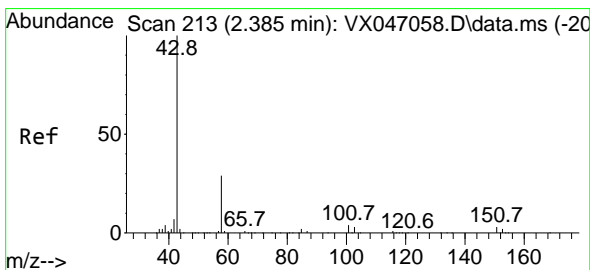
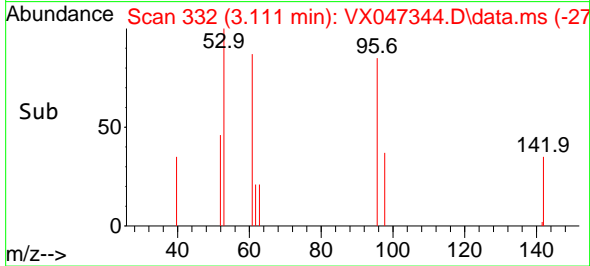
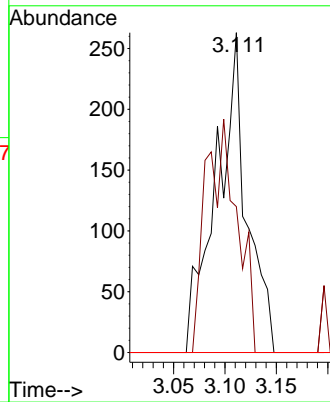


#15
 Acrylonitrile
 Concen: 0.385 ug/l
 RT: 3.111 min Scan# 31
 Delta R.T. 0.037 min
 Lab File: VX047344.D
 Acq: 14 Aug 2025 17:05

Instrument :
 MSVOA_X
 ClientSampleId :
 TW-518R-NRE

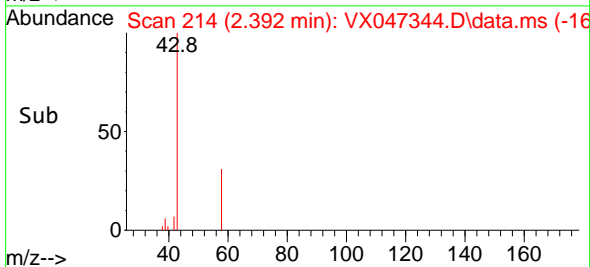
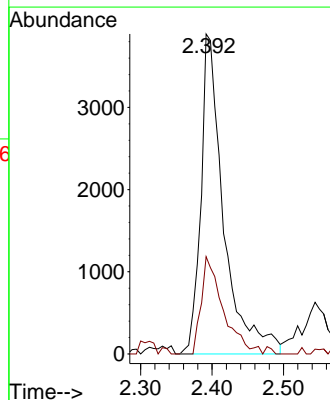
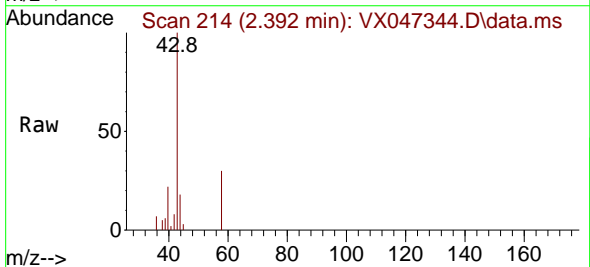


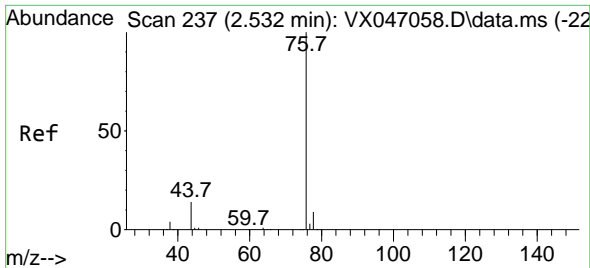
Tgt Ion: 53 Resp: 547
 Ion Ratio Lower Upper
 53 100
 52 0.0 65.7 98.5#
 51 0.0 28.8 43.2#



#16
 Acetone
 Concen: 7.215 ug/l
 RT: 2.392 min Scan# 214
 Delta R.T. 0.006 min
 Lab File: VX047344.D
 Acq: 14 Aug 2025 17:05

Tgt Ion: 43 Resp: 8602
 Ion Ratio Lower Upper
 43 100
 58 30.4 24.0 36.0

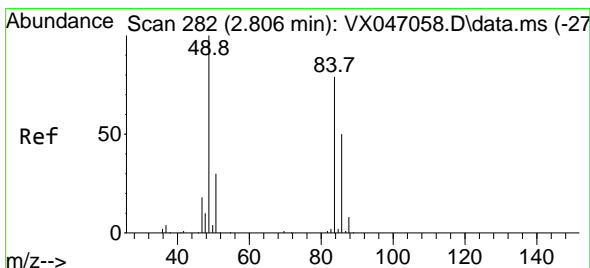
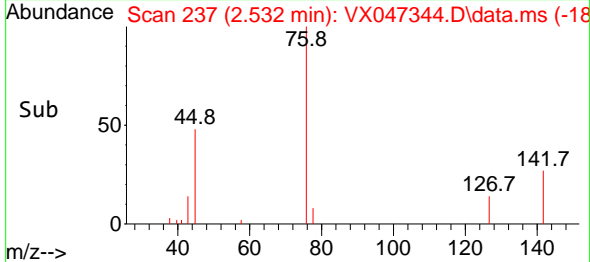
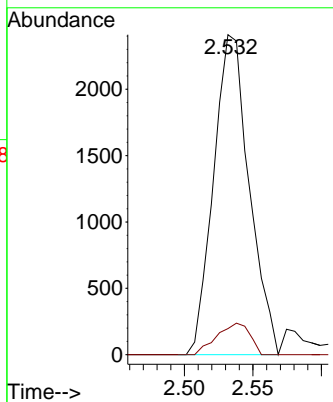
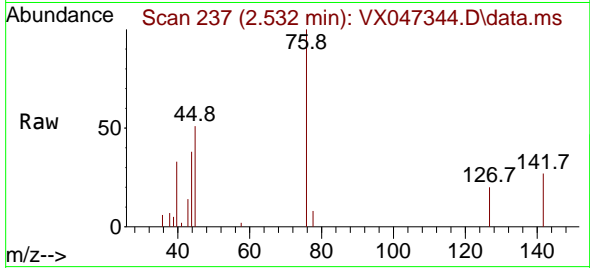




#17
 Carbon Disulfide
 Concen: 0.503 ug/l
 RT: 2.532 min Scan# 21
 Delta R.T. 0.000 min
 Lab File: VX047344.D
 Acq: 14 Aug 2025 17:05

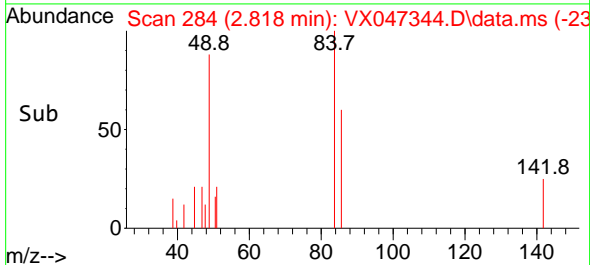
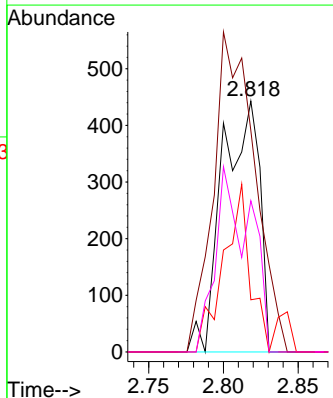
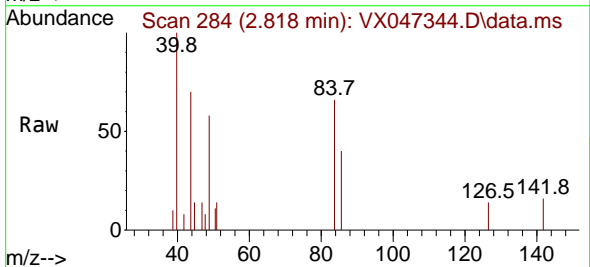
Instrument :
 MSVOA_X
 ClientSampleId :
 TW-518R-NRE

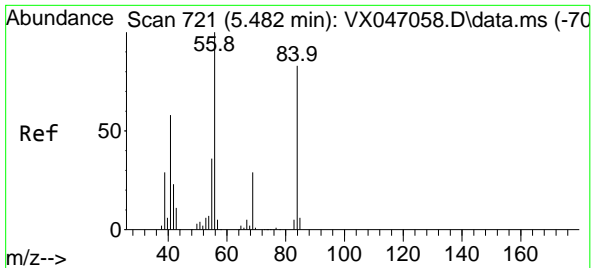
Tgt Ion: 76 Resp: 4367
 Ion Ratio Lower Upper
 76 100
 78 8.2 7.0 10.4



#20
 Methylene Chloride
 Concen: 0.233 ug/l
 RT: 2.818 min Scan# 284
 Delta R.T. 0.012 min
 Lab File: VX047344.D
 Acq: 14 Aug 2025 17:05

Tgt Ion: 84 Resp: 763
 Ion Ratio Lower Upper
 84 100
 49 88.3 101.6 152.4#
 51 20.8 30.3 45.5#
 86 60.3 50.6 75.8



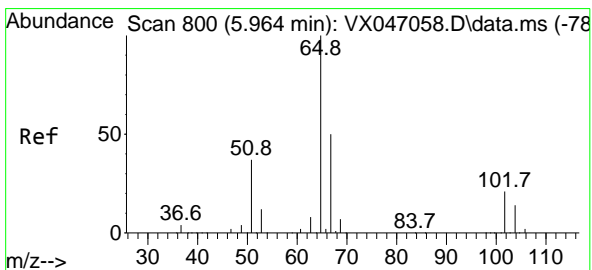
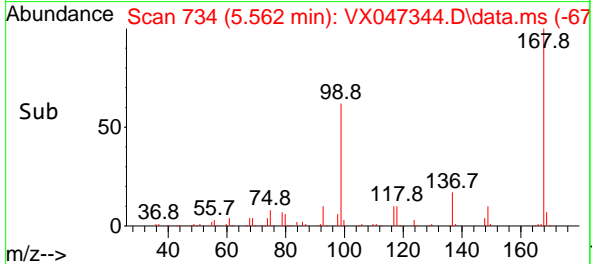
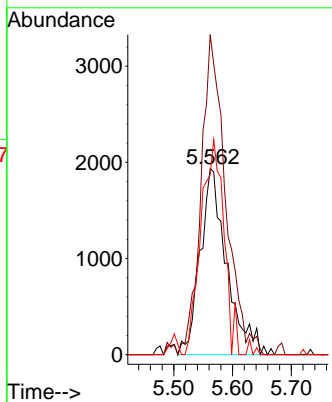
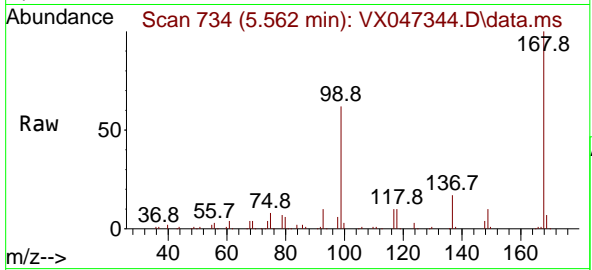


#31
 Cyclohexane
 Concen: 1.097 ug/l
 RT: 5.562 min Scan# 71
 Delta R.T. 0.079 min
 Lab File: VX047344.D
 Acq: 14 Aug 2025 17:05

Instrument : MSVOA_X
 ClientSampleId : TW-518R-NRE

Tgt Ion: 56 Resp: 6102

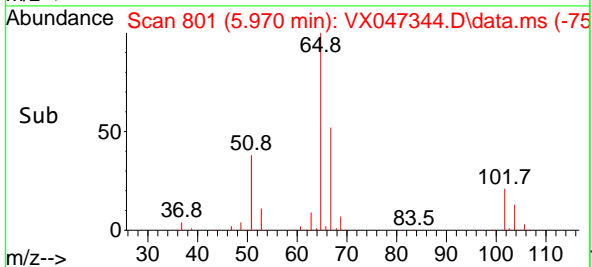
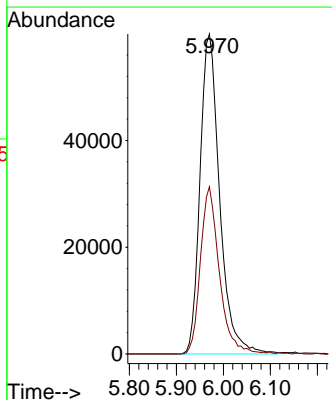
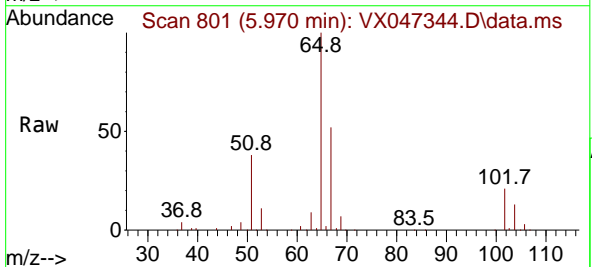
Ion	Ratio	Lower	Upper
56	100		
69	165.5	23.3	34.9#
84	93.0	66.5	99.7

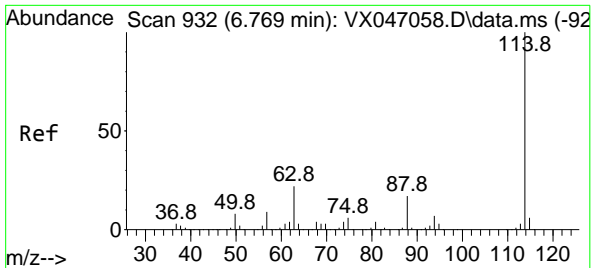


#33
 1,2-Dichloroethane-d4
 Concen: 58.308 ug/l
 RT: 5.970 min Scan# 801
 Delta R.T. 0.006 min
 Lab File: VX047344.D
 Acq: 14 Aug 2025 17:05

Tgt Ion: 65 Resp: 173521

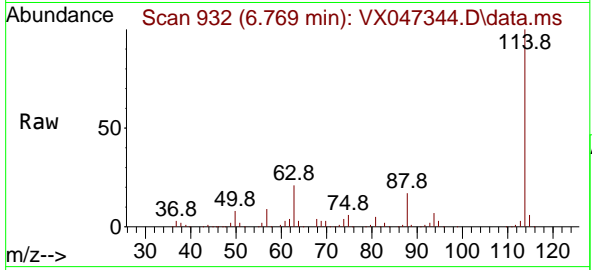
Ion	Ratio	Lower	Upper
65	100		
67	50.5	0.0	104.8



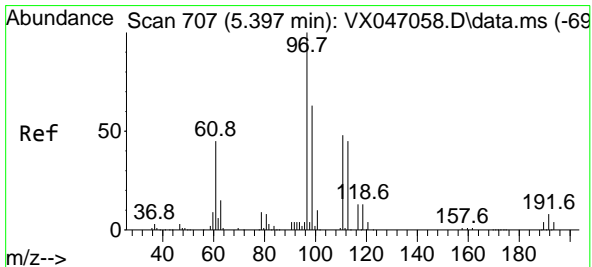
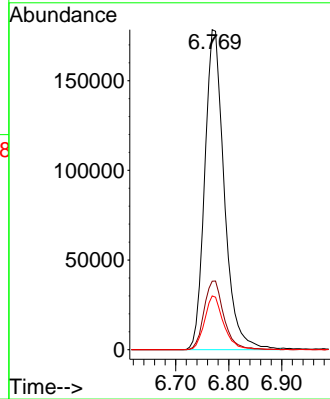
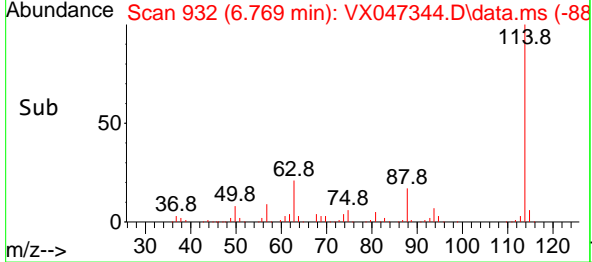


#34
 1,4-Difluorobenzene
 Concen: 50.000 ug/l
 RT: 6.769 min Scan# 91
 Delta R.T. 0.000 min
 Lab File: VX047344.D
 Acq: 14 Aug 2025 17:05

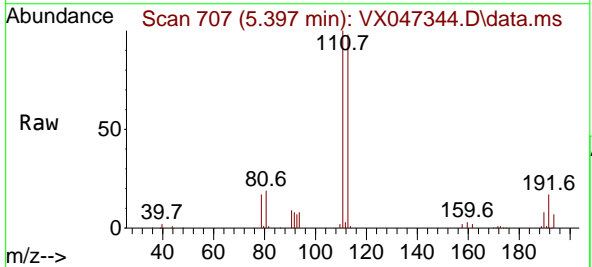
Instrument :
 MSVOA_X
 ClientSampleId :
 TW-518R-NRE



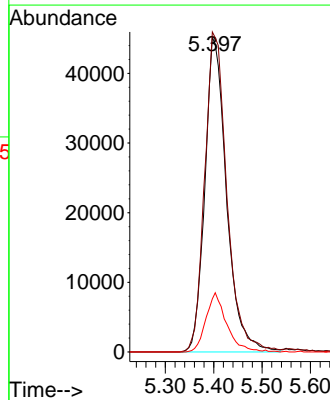
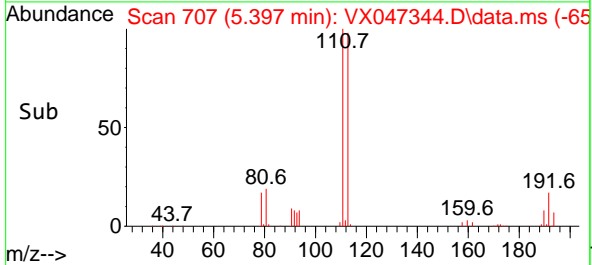
Tgt Ion:114 Resp: 455924
 Ion Ratio Lower Upper
 114 100
 63 21.4 0.0 43.2
 88 16.8 0.0 33.8

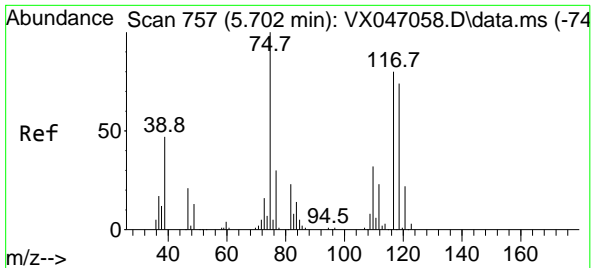


#35
 Dibromofluoromethane
 Concen: 50.078 ug/l
 RT: 5.397 min Scan# 707
 Delta R.T. 0.000 min
 Lab File: VX047344.D
 Acq: 14 Aug 2025 17:05



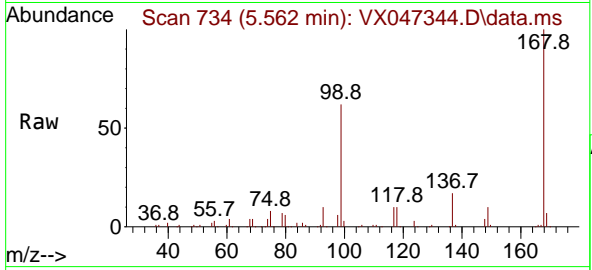
Tgt Ion:113 Resp: 140972
 Ion Ratio Lower Upper
 113 100
 111 104.3 82.6 124.0
 192 17.9 14.9 22.3



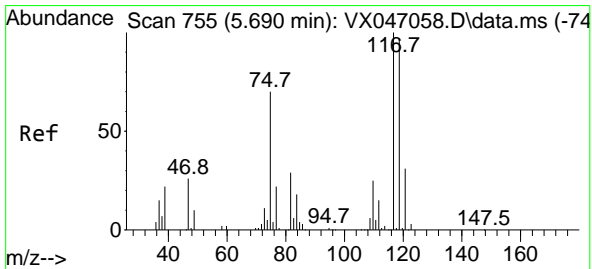
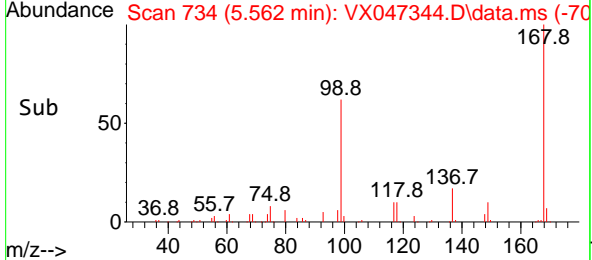
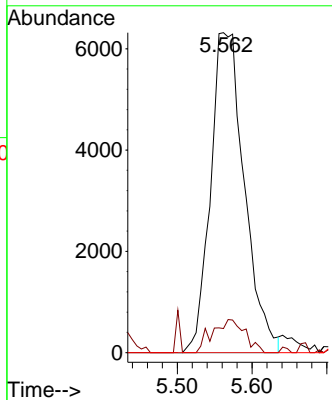


#36
 1,1-Dichloropropene
 Concen: 4.146 ug/l
 RT: 5.562 min Scan# 711
 Delta R.T. -0.140 min
 Lab File: VX047344.D
 Acq: 14 Aug 2025 17:05

Instrument : MSVOA_X
 ClientSampleId : TW-518R-NRE

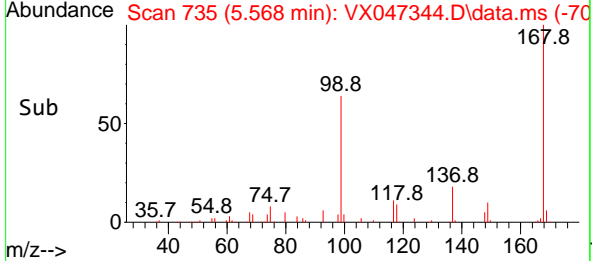
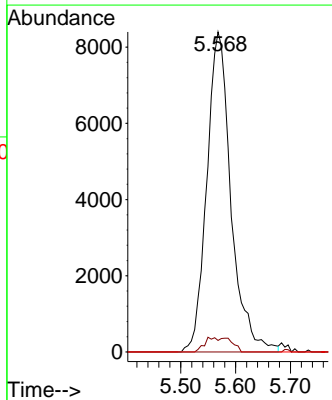
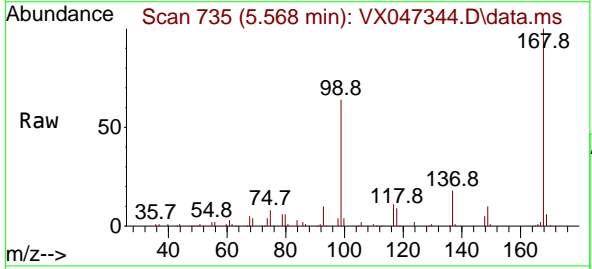


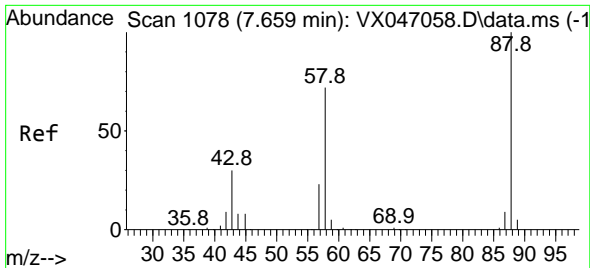
Tgt Ion: 75 Resp: 19895
 Ion Ratio Lower Upper
 75 100
 110 10.0 17.2 51.5#
 77 0.0 25.1 37.7#



#38
 Carbon Tetrachloride
 Concen: 5.021 ug/l
 RT: 5.568 min Scan# 735
 Delta R.T. -0.122 min
 Lab File: VX047344.D
 Acq: 14 Aug 2025 17:05

Tgt Ion: 117 Resp: 25714
 Ion Ratio Lower Upper
 117 100
 119 3.6 76.6 115.0#
 121 0.0 24.4 36.6#

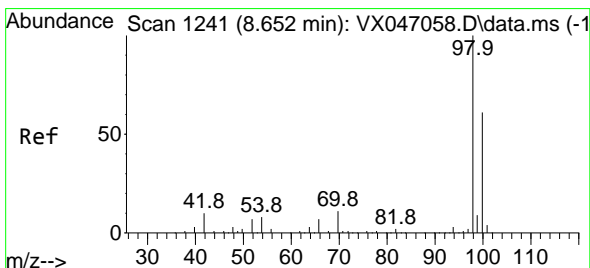
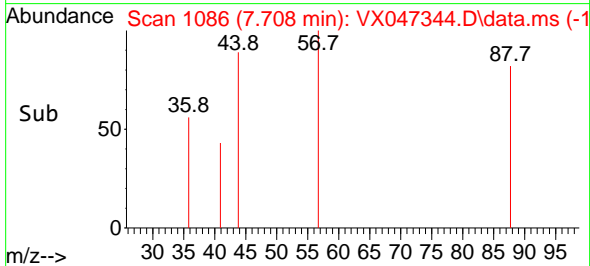
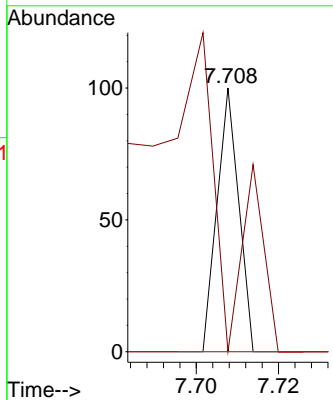
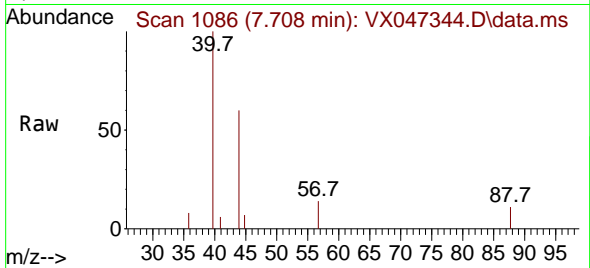




#49
 1,4-Dioxane
 Concen: 0.866 ug/l
 RT: 7.708 min Scan# 1086
 Delta R.T. 0.049 min
 Lab File: VX047344.D
 Acq: 14 Aug 2025 17:05

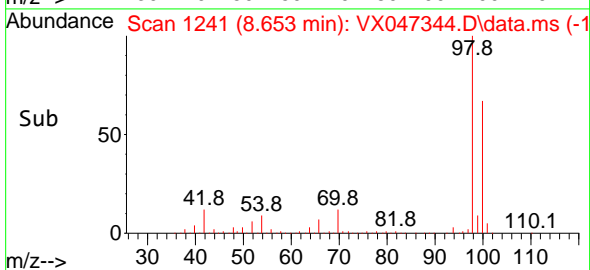
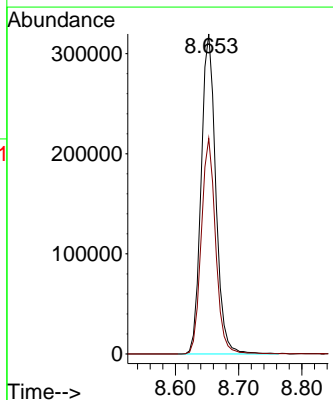
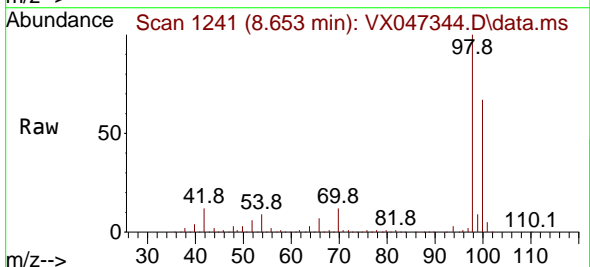
Instrument :
 MSVOA_X
 ClientSampleId :
 TW-518R-NRE

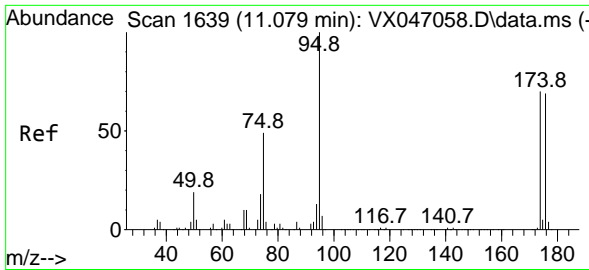
Tgt Ion	Resp	Lower	Upper
88	100		
43	0.0	33.6	50.4#
58	0.0	58.8	88.2#



#50
 Toluene-d8
 Concen: 56.505 ug/l
 RT: 8.653 min Scan# 1241
 Delta R.T. 0.000 min
 Lab File: VX047344.D
 Acq: 14 Aug 2025 17:05

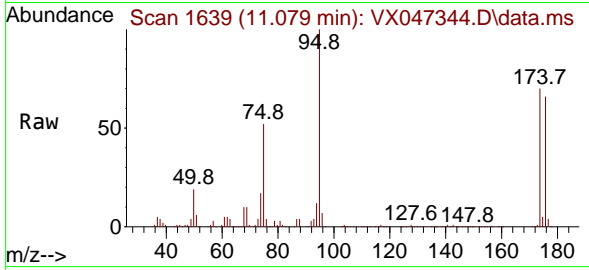
Tgt Ion	Resp	Lower	Upper
98	100		
100	66.1	53.3	79.9



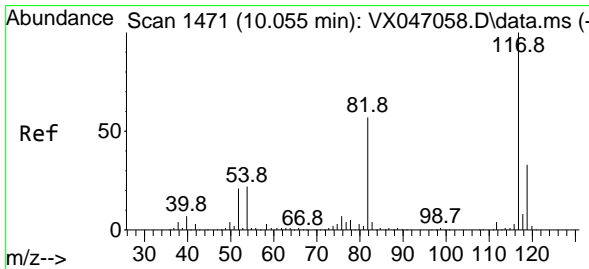
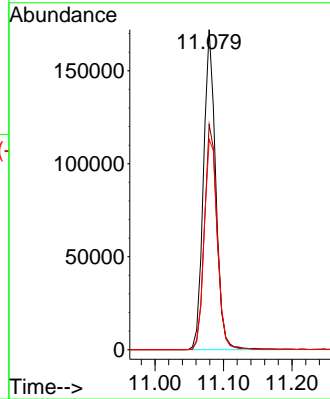
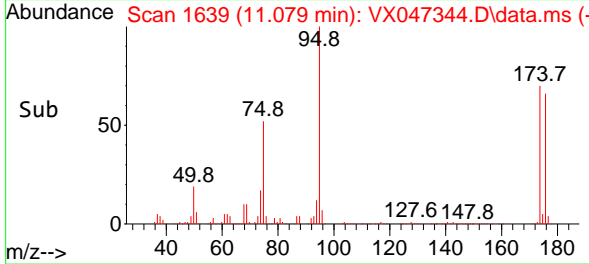


#62
 4-Bromofluorobenzene
 Concen: 54.691 ug/l
 RT: 11.079 min Scan# 1639
 Delta R.T. 0.000 min
 Lab File: VX047344.D
 Acq: 14 Aug 2025 17:05

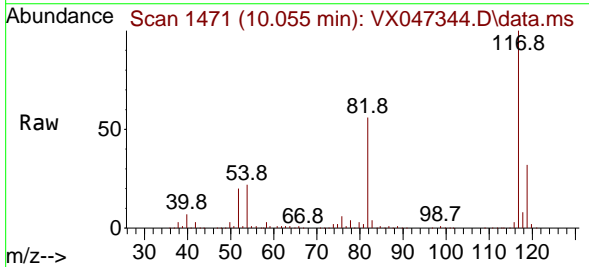
Instrument :
 MSVOA_X
 ClientSampleId :
 TW-518R-NRE



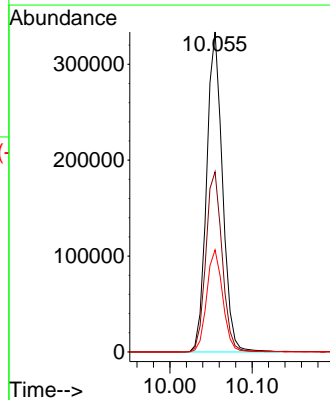
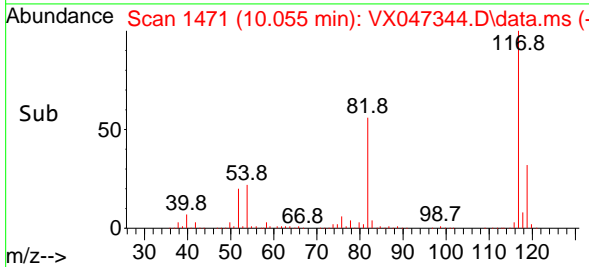
Tgt Ion: 95 Resp: 214862
 Ion Ratio Lower Upper
 95 100
 174 72.8 0.0 144.6
 176 70.5 0.0 139.6

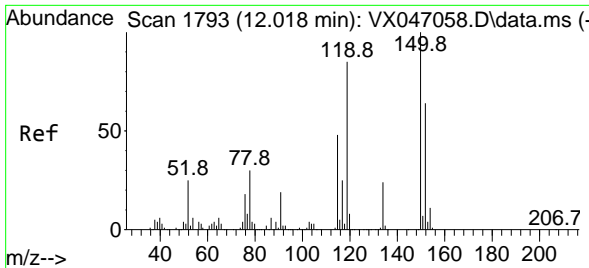


#63
 Chlorobenzene-d5
 Concen: 50.000 ug/l
 RT: 10.055 min Scan# 1471
 Delta R.T. 0.000 min
 Lab File: VX047344.D
 Acq: 14 Aug 2025 17:05



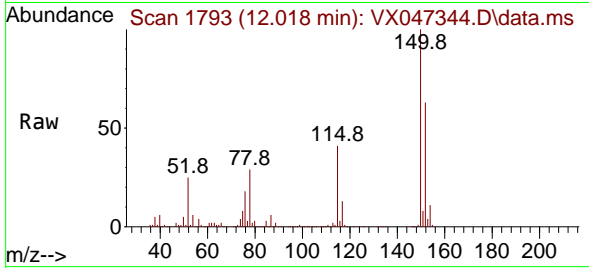
Tgt Ion: 117 Resp: 448067
 Ion Ratio Lower Upper
 117 100
 82 56.3 45.4 68.2
 119 31.9 26.1 39.1



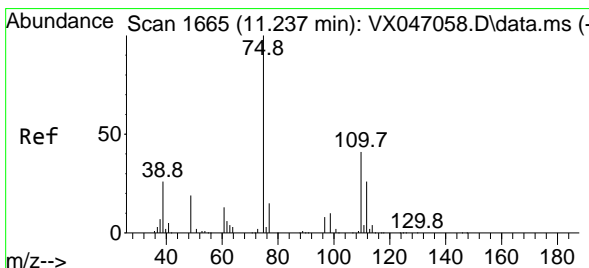
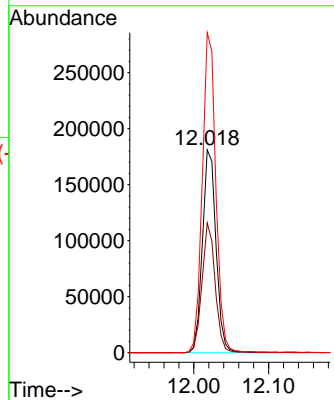
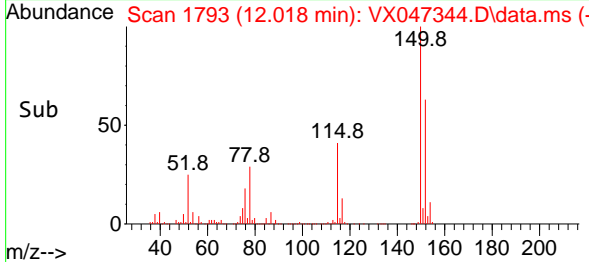


#72
 1,4-Dichlorobenzene-d4
 Concen: 50.000 ug/l
 RT: 12.018 min Scan# 11
 Delta R.T. 0.000 min
 Lab File: VX047344.D
 Acq: 14 Aug 2025 17:05

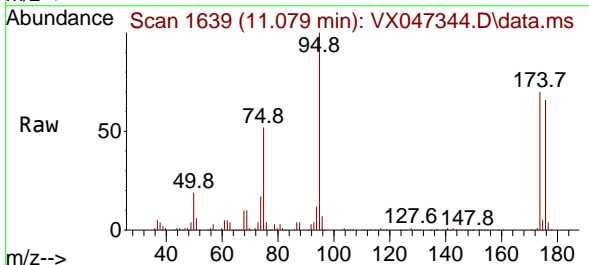
Instrument :
 MSVOA_X
 ClientSampleId :
 TW-518R-NRE



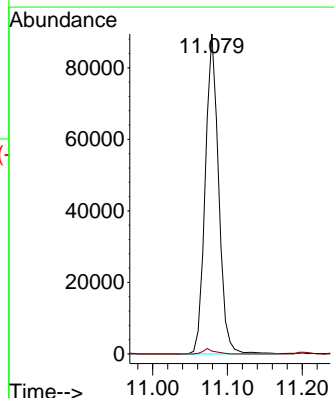
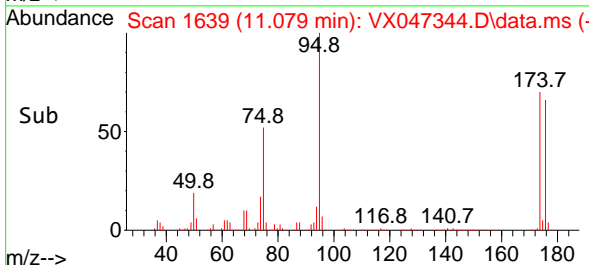
Tgt Ion:152 Resp: 229471
 Ion Ratio Lower Upper
 152 100
 115 61.9 45.6 136.7
 150 157.3 0.0 354.6

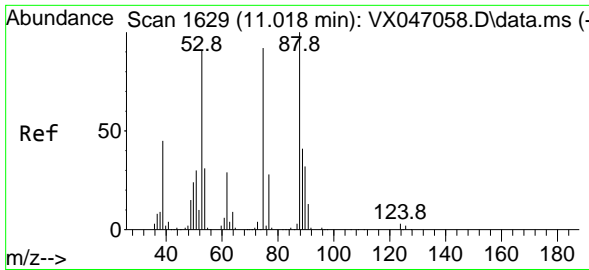


#76
 1,2,3-Trichloropropane
 Concen: 26.164 ug/l
 RT: 11.079 min Scan# 1639
 Delta R.T. -0.158 min
 Lab File: VX047344.D
 Acq: 14 Aug 2025 17:05



Tgt Ion: 75 Resp: 111130
 Ion Ratio Lower Upper
 75 100
 77 1.4 21.6 65.0#

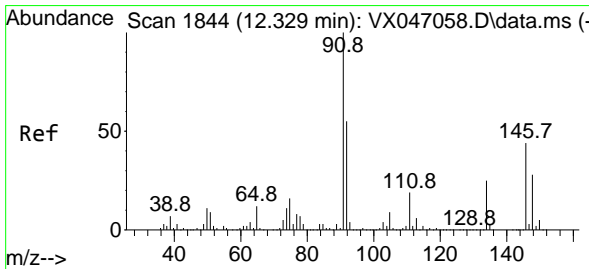
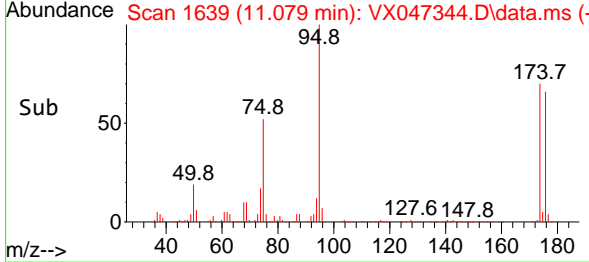
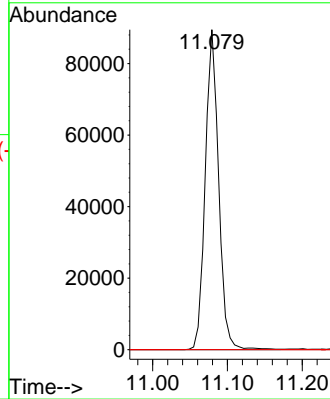
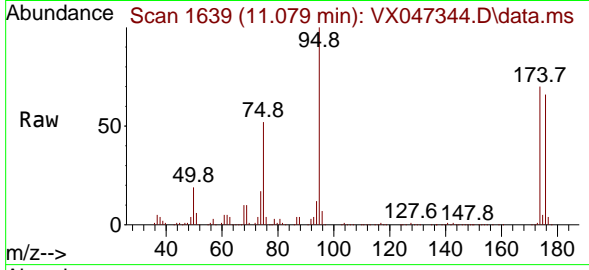




#81
 trans-1,4-Dichloro-2-butene
 Concen: 67.410 ug/l
 RT: 11.079 min Scan# 1
 Delta R.T. 0.061 min
 Lab File: VX047344.D
 Acq: 14 Aug 2025 17:05

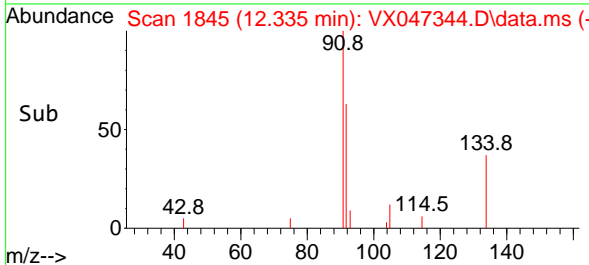
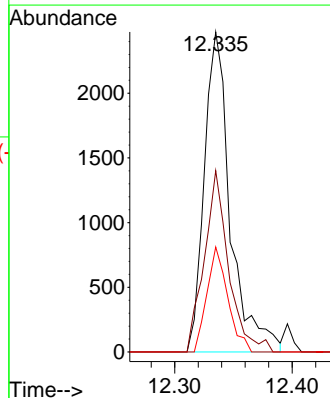
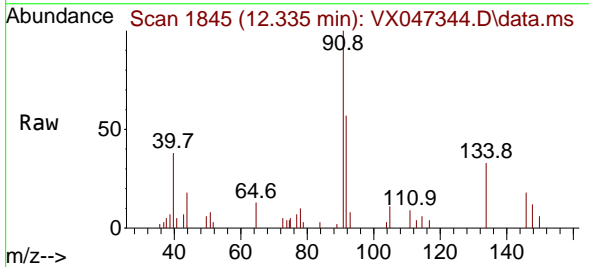
Instrument :
 MSVOA_X
 ClientSampleId :
 TW-518R-NRE

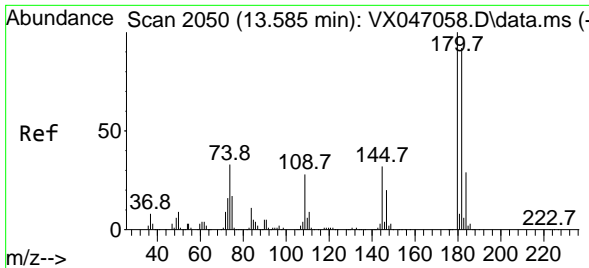
Tgt Ion: 75 Resp: 111130
 Ion Ratio Lower Upper
 75 100
 53 0.0 84.2 126.4#
 89 0.0 36.0 54.0#



#89
 n-Butylbenzene
 Concen: 0.261 ug/l
 RT: 12.335 min Scan# 1845
 Delta R.T. 0.006 min
 Lab File: VX047344.D
 Acq: 14 Aug 2025 17:05

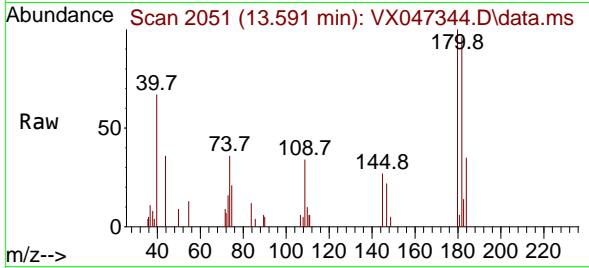
Tgt Ion: 91 Resp: 3808
 Ion Ratio Lower Upper
 91 100
 92 53.0 27.5 82.5
 134 26.4 12.8 38.3



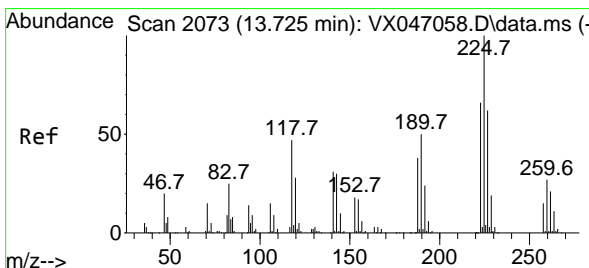
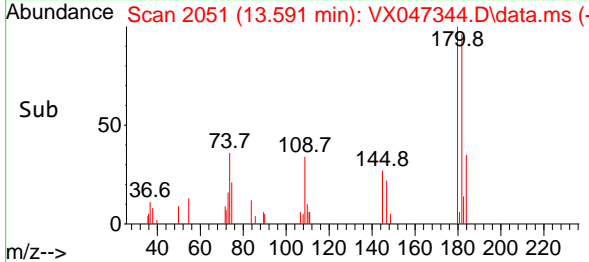
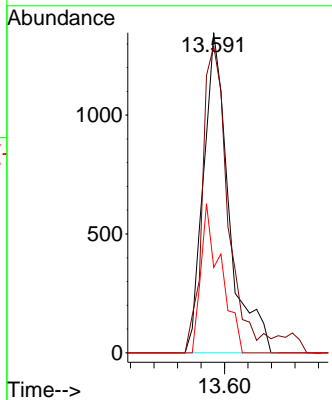


#93
 1,2,4-Trichlorobenzene
 Concen: 0.391 ug/l
 RT: 13.591 min Scan# 2051
 Delta R.T. 0.006 min
 Lab File: VX047344.D
 Acq: 14 Aug 2025 17:05

Instrument :
 MSVOA_X
 ClientSampleId :
 TW-518R-NRE

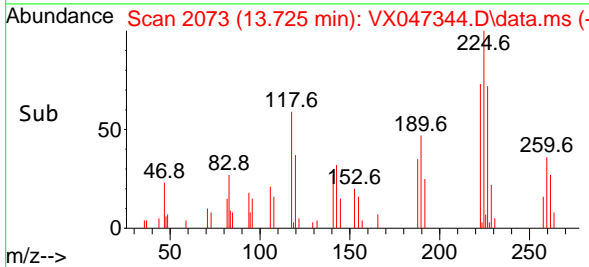
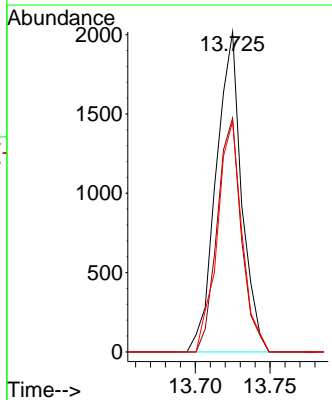
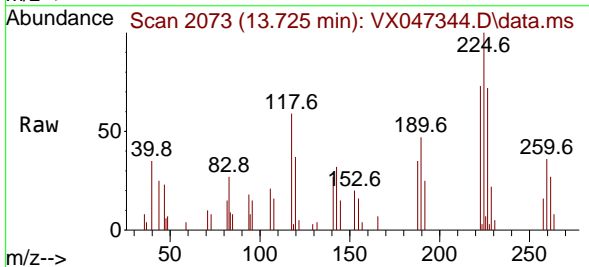


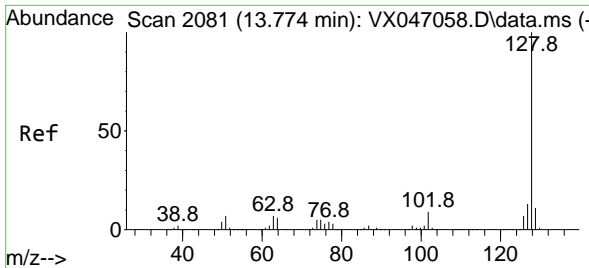
Tgt Ion:180 Resp: 2036
 Ion Ratio Lower Upper
 180 100
 182 96.4 47.3 141.8
 145 36.3 16.4 49.1



#94
 Hexachlorobutadiene
 Concen: 1.351 ug/l
 RT: 13.725 min Scan# 2073
 Delta R.T. 0.000 min
 Lab File: VX047344.D
 Acq: 14 Aug 2025 17:05

Tgt Ion:225 Resp: 2393
 Ion Ratio Lower Upper
 225 100
 223 69.4 31.6 95.0
 227 69.8 32.9 98.6



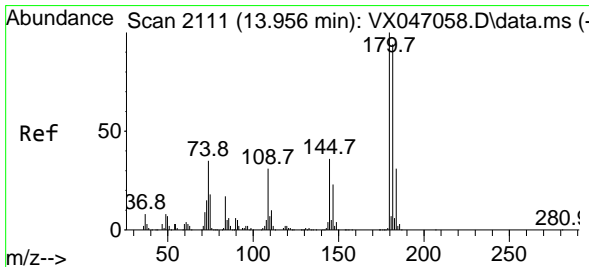
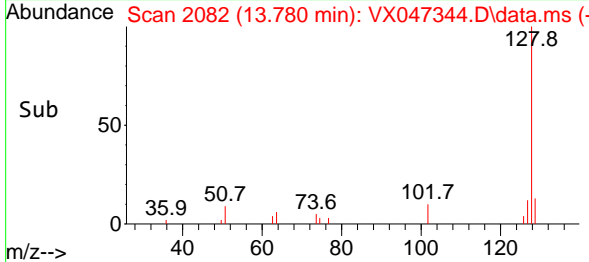
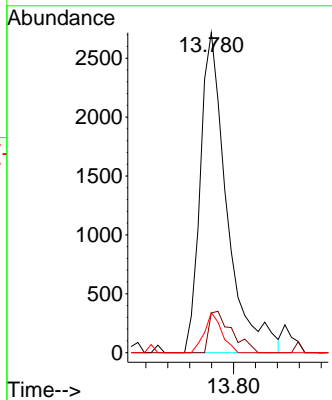
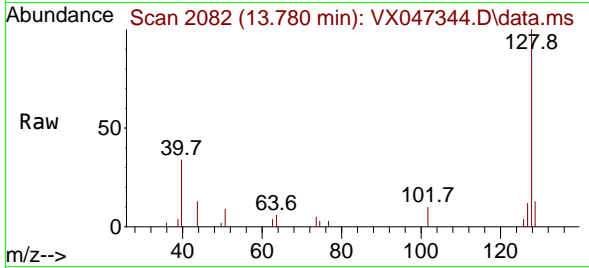


#95
 Naphthalene
 Concen: 0.300 ug/l
 RT: 13.780 min Scan# 2081
 Delta R.T. 0.006 min
 Lab File: VX047344.D
 Acq: 14 Aug 2025 17:05

Instrument :
 MSVOA_X
 ClientSampleId :
 TW-518R-NRE

Tgt Ion:128 Resp: 4579

Ion	Ratio	Lower	Upper
128	100		
127	11.0	10.1	15.1
129	8.1	8.6	13.0



#96
 1,2,3-Trichlorobenzene
 Concen: 0.338 ug/l
 RT: 13.963 min Scan# 2112
 Delta R.T. 0.006 min
 Lab File: VX047344.D
 Acq: 14 Aug 2025 17:05

Tgt Ion:180 Resp: 1698

Ion	Ratio	Lower	Upper
180	100		
182	114.7	46.9	140.6
145	39.6	17.3	52.0

