

Data Path : Z:\voasrv\HPCHEM1\MSVOA\_X\Data\VX081425\  
 Data File : VX047345.D  
 Acq On : 14 Aug 2025 17:26  
 Operator : JC/MD  
 Sample : Q2814-19RE  
 Misc : 5.0mL/MSVOA\_X/WATER  
 ALS Vial : 11 Sample Multiplier: 1

Instrument :  
 MSVOA\_X  
 ClientSampleId :  
 TW-518R-ERE

Quant Time: Aug 18 01:31:39 2025  
 Quant Method : Z:\voasrv\HPCHEM1\MSVOA\_X\Method\82X072125W.M  
 Quant Title : SW846 8260  
 QLast Update : Tue Jul 22 03:59:51 2025  
 Response via : Initial Calibration

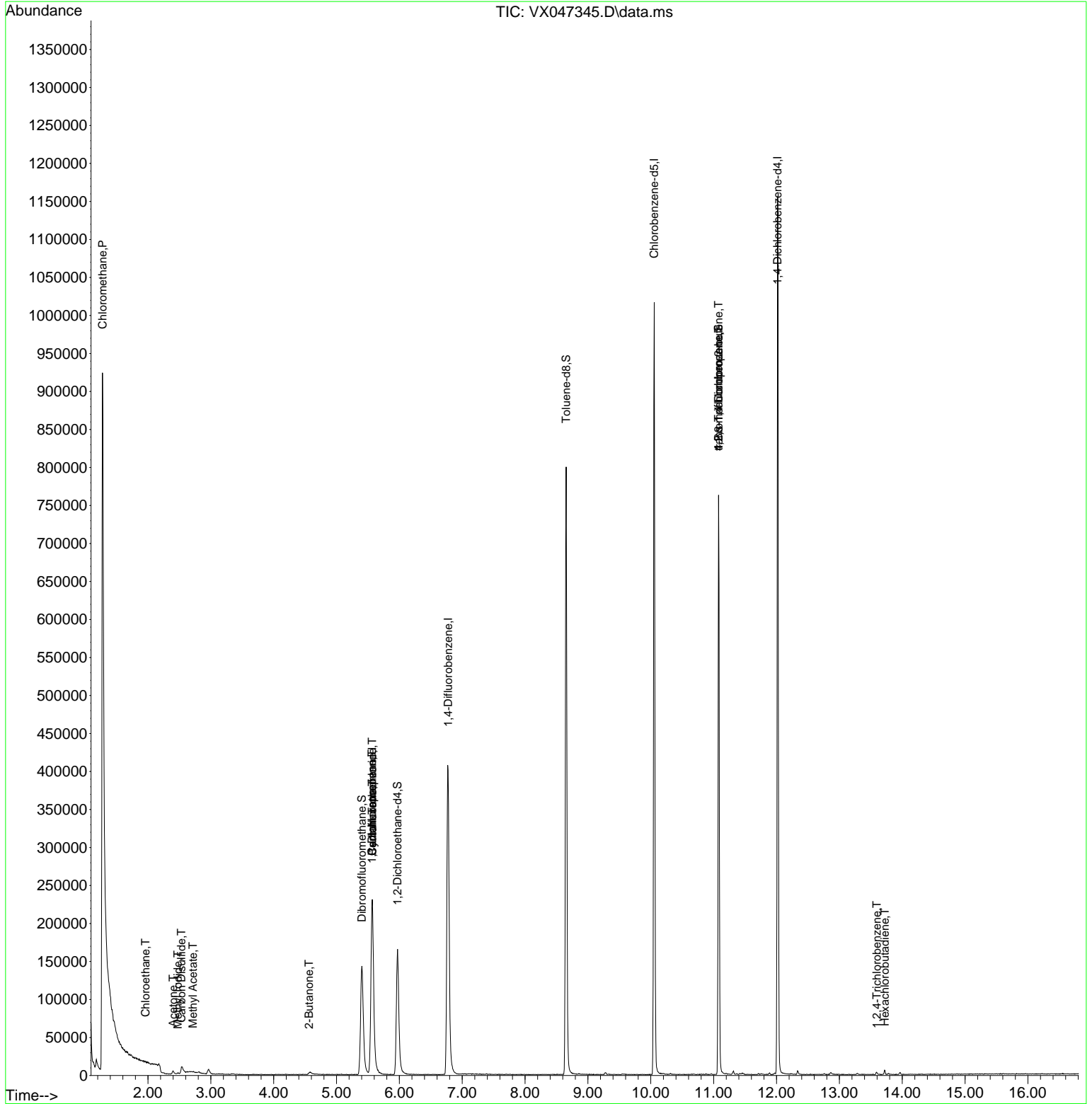
Compound	R.T.	QIon	Response	Conc	Units	Dev(Min)
-----						
Internal Standards						
1) Pentafluorobenzene	5.568	168	230467	50.000	ug/l	0.00
34) 1,4-Difluorobenzene	6.775	114	443658	50.000	ug/l	0.00
63) Chlorobenzene-d5	10.055	117	448334	50.000	ug/l	0.00
72) 1,4-Dichlorobenzene-d4	12.018	152	231965	50.000	ug/l	0.00
System Monitoring Compounds						
33) 1,2-Dichloroethane-d4	5.970	65	170697	59.458	ug/l	0.00
Spiked Amount	50.000	Range 78 - 117	Recovery	=	118.920%#	
35) Dibromofluoromethane	5.403	113	135809	49.578	ug/l	0.00
Spiked Amount	50.000	Range 75 - 124	Recovery	=	99.160%	
50) Toluene-d8	8.653	98	481532	54.281	ug/l	0.00
Spiked Amount	50.000	Range 92 - 112	Recovery	=	108.560%	
62) 4-Bromofluorobenzene	11.079	95	207062	54.163	ug/l	0.00
Spiked Amount	50.000	Range 83 - 123	Recovery	=	108.320%	
Target Compounds						
						Qvalue
3) Chloromethane	1.276	50	44904	14.829	ug/l #	43
6) Chloroethane	1.959	64	2320	1.085	ug/l #	46
10) Methyl Iodide	2.477	142	2110	0.708	ug/l #	86
11) Tert butyl alcohol	2.971	59	3220	Below Cal	#	74
16) Acetone	2.398	43	5950	5.174	ug/l #	87
17) Carbon Disulfide	2.532	76	16077	1.919	ug/l #	91
18) Methyl Acetate	2.715	43	947	0.310	ug/l #	64
25) 2-Butanone	4.562	43	381	0.228	ug/l #	52
31) Cyclohexane	5.568	56	4598	0.857	ug/l #	1
36) 1,1-Dichloropropene	5.562	75	19020	4.073	ug/l #	50
38) Carbon Tetrachloride	5.568	117	24693	4.955	ug/l #	16
76) 1,2,3-Trichloropropane	11.079	75	107874	25.125	ug/l #	35
81) trans-1,4-Dichloro-2-b...	11.079	75	107874	64.731	ug/l #	8
93) 1,2,4-Trichlorobenzene	13.597	180	1082	0.205	ug/l	93
94) Hexachlorobutadiene	13.725	225	826	0.461	ug/l	99

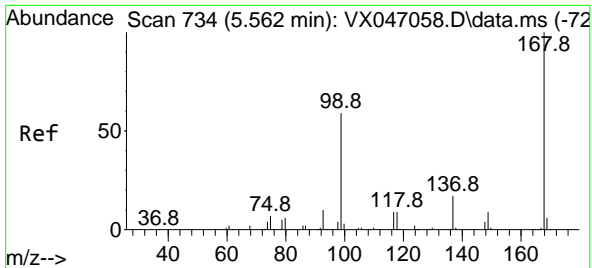
(#) = qualifier out of range (m) = manual integration (+) = signals summed

Data Path : Z:\voasrv\HPCHEM1\MSVOA\_X\Data\VX081425\  
 Data File : VX047345.D  
 Acq On : 14 Aug 2025 17:26  
 Operator : JC/MD  
 Sample : Q2814-19RE  
 Misc : 5.0mL/MSVOA\_X/WATER  
 ALS Vial : 11 Sample Multiplier: 1

Instrument :  
 MSVOA\_X  
 ClientSampleId :  
 TW-518R-ERE

Quant Time: Aug 18 01:31:39 2025  
 Quant Method : Z:\voasrv\HPCHEM1\MSVOA\_X\Method\82X072125W.M  
 Quant Title : SW846 8260  
 QLast Update : Tue Jul 22 03:59:51 2025  
 Response via : Initial Calibration

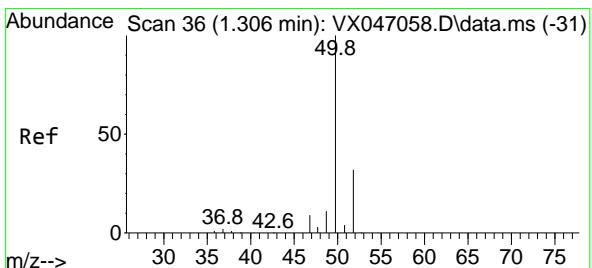
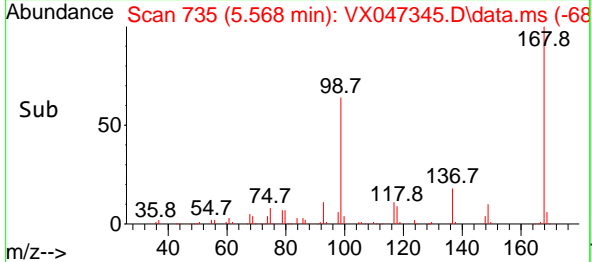
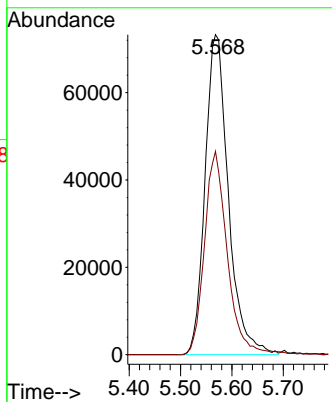
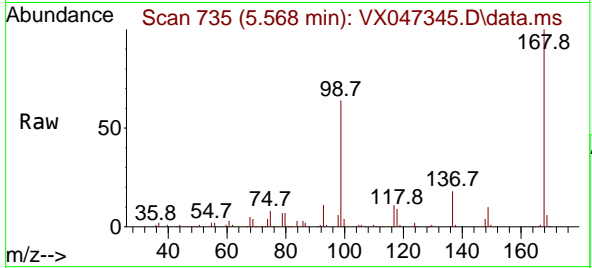




#1  
 Pentafluorobenzene  
 Concen: 50.000 ug/l  
 RT: 5.568 min Scan# 71  
 Delta R.T. 0.006 min  
 Lab File: VX047345.D  
 Acq: 14 Aug 2025 17:26

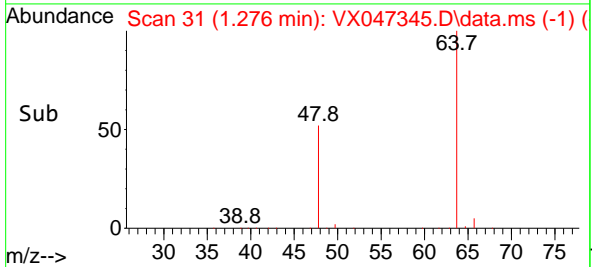
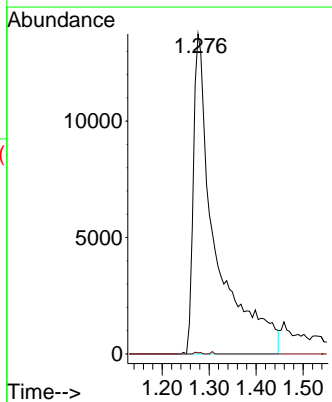
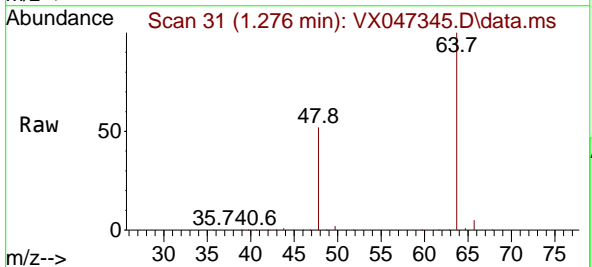
Instrument :  
 MSVOA\_X  
 ClientSampleId :  
 TW-518R-ERE

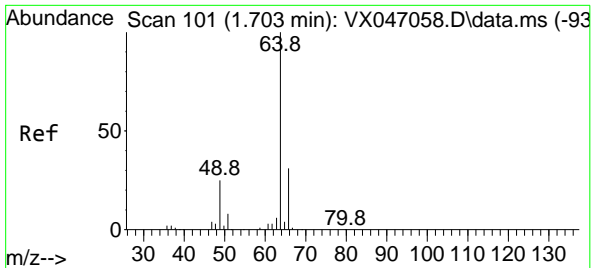
Tgt Ion:168 Resp: 230467  
 Ion Ratio Lower Upper  
 168 100  
 99 63.5 48.0 72.0



#3  
 Chloromethane  
 Concen: 14.829 ug/l  
 RT: 1.276 min Scan# 31  
 Delta R.T. -0.030 min  
 Lab File: VX047345.D  
 Acq: 14 Aug 2025 17:26

Tgt Ion: 50 Resp: 44904  
 Ion Ratio Lower Upper  
 50 100  
 52 0.4 25.4 38.2#



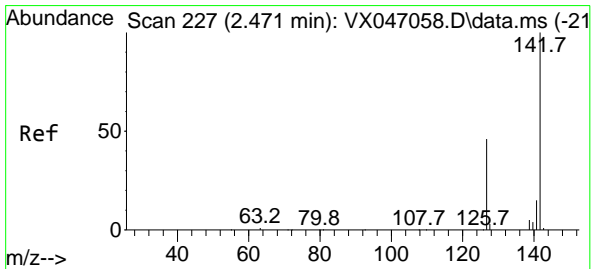
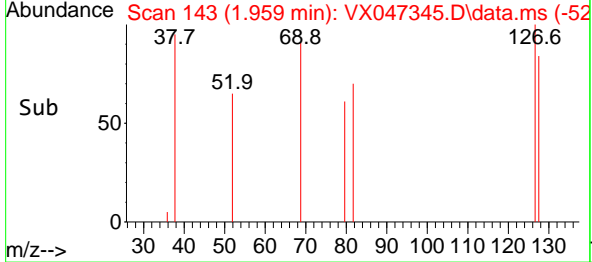
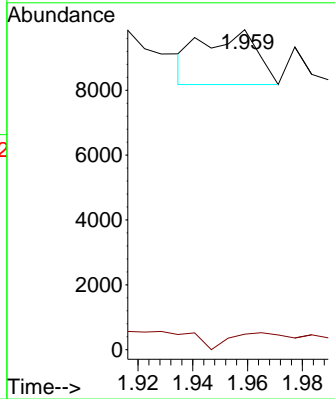
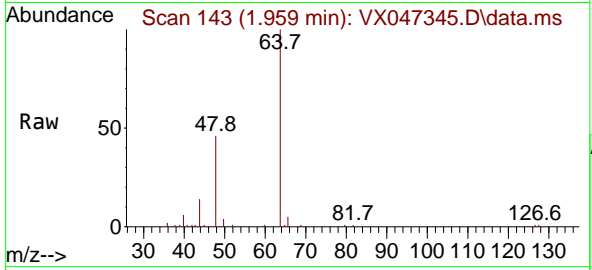


#6  
 Chloroethane  
 Concen: 1.085 ug/l  
 RT: 1.959 min Scan# 14  
 Delta R.T. 0.256 min  
 Lab File: VX047345.D  
 Acq: 14 Aug 2025 17:26

Instrument : MSVOA\_X  
 ClientSampleId : TW-518R-ERE

Tgt Ion: 64 Resp: 2320

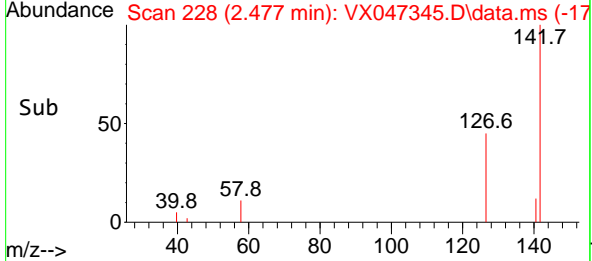
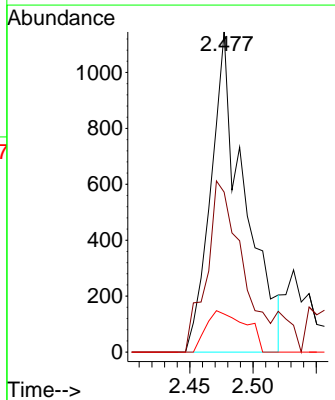
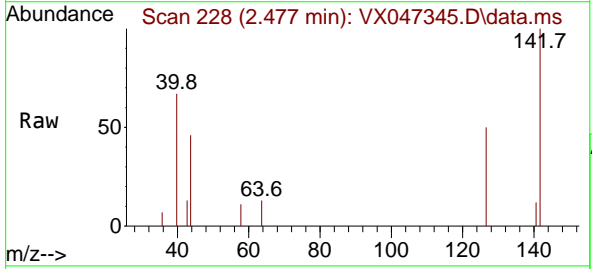
Ion	Ratio	Lower	Upper
64	100		
66	1.5	25.0	37.6#

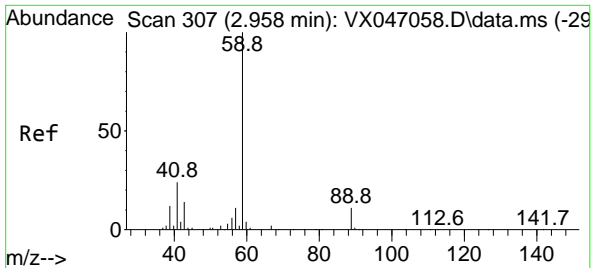


#10  
 Methyl Iodide  
 Concen: 0.708 ug/l  
 RT: 2.477 min Scan# 228  
 Delta R.T. 0.006 min  
 Lab File: VX047345.D  
 Acq: 14 Aug 2025 17:26

Tgt Ion: 142 Resp: 2110

Ion	Ratio	Lower	Upper
142	100		
127	56.6	36.6	54.8#
141	15.3	10.9	16.3

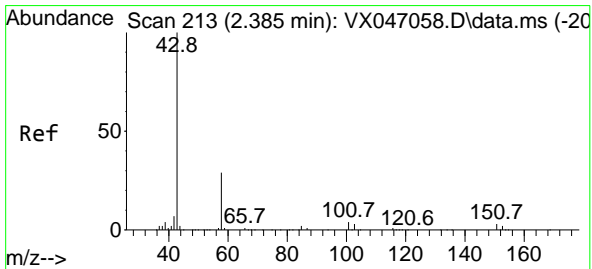
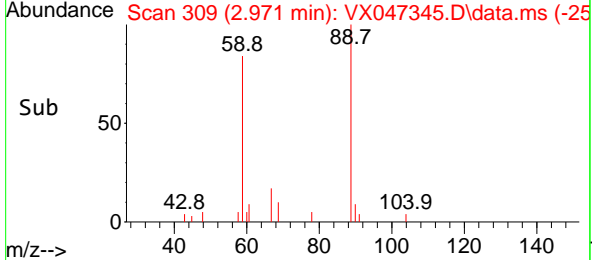
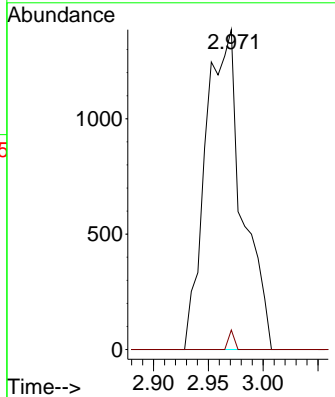
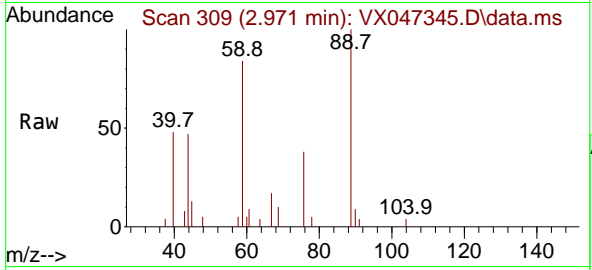




#11  
 Tert butyl alcohol  
 Concen: Below Cal  
 RT: 2.971 min Scan# 30  
 Delta R.T. 0.013 min  
 Lab File: VX047345.D  
 Acq: 14 Aug 2025 17:26

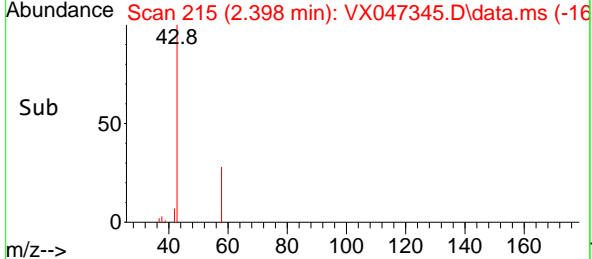
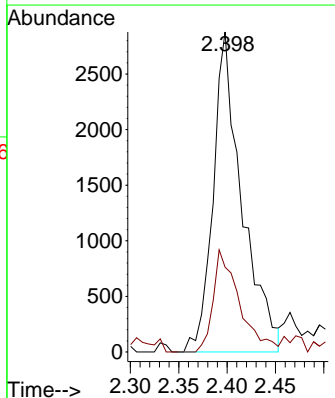
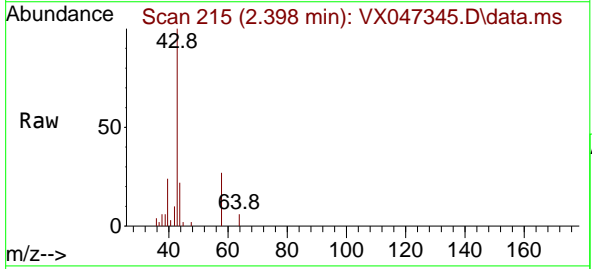
Instrument : MSVOA\_X  
 ClientSampleId : TW-518R-ERE

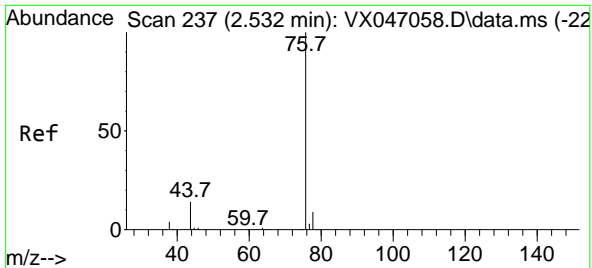
Tgt Ion: 59 Resp: 3220  
 Ion Ratio Lower Upper  
 59 100  
 57 1.0 8.5 12.7#



#16  
 Acetone  
 Concen: 5.174 ug/l  
 RT: 2.398 min Scan# 215  
 Delta R.T. 0.013 min  
 Lab File: VX047345.D  
 Acq: 14 Aug 2025 17:26

Tgt Ion: 43 Resp: 5950  
 Ion Ratio Lower Upper  
 43 100  
 58 23.1 24.0 36.0#

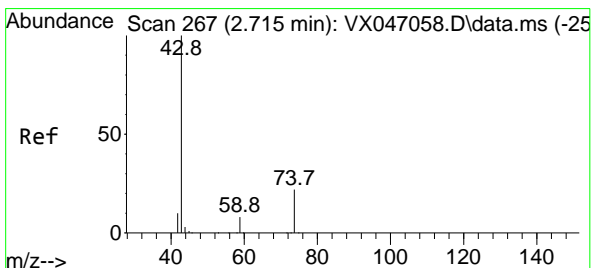
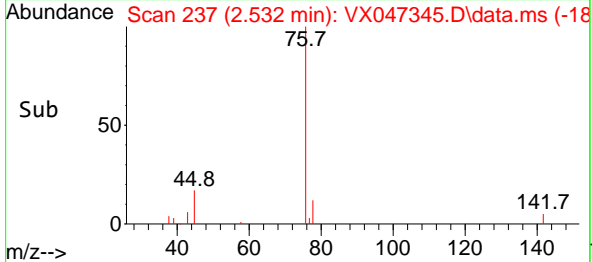
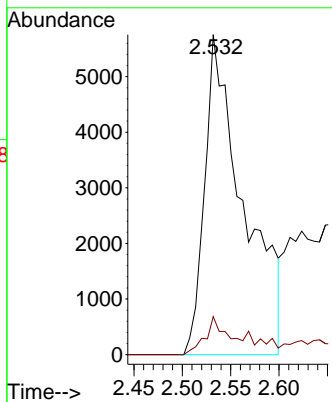
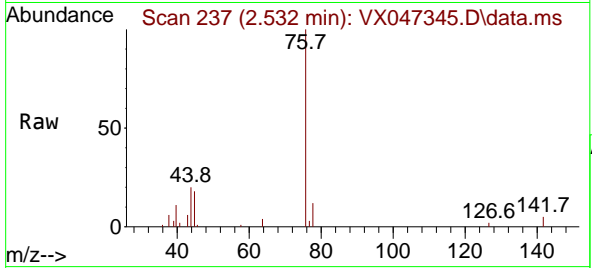




#17  
 Carbon Disulfide  
 Concen: 1.919 ug/l  
 RT: 2.532 min Scan# 21  
 Delta R.T. 0.000 min  
 Lab File: VX047345.D  
 Acq: 14 Aug 2025 17:26

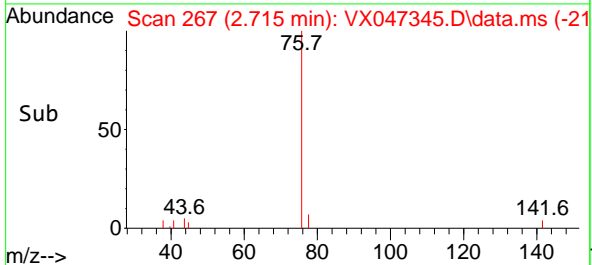
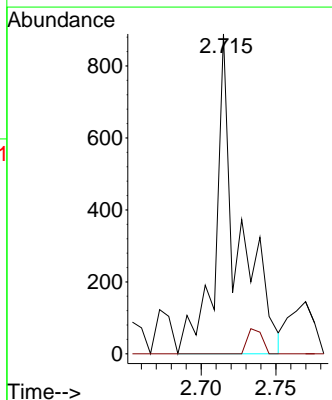
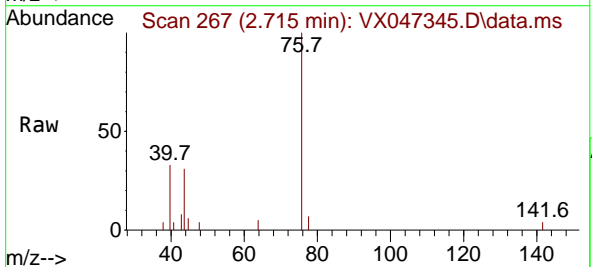
Instrument : MSVOA\_X  
 ClientSampleId : TW-518R-ERE

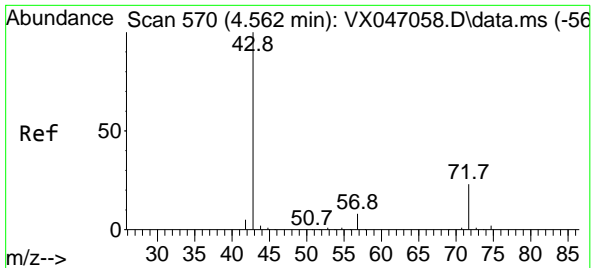
Tgt Ion: 76 Resp: 16077  
 Ion Ratio Lower Upper  
 76 100  
 78 11.9 7.0 10.4#



#18  
 Methyl Acetate  
 Concen: 0.310 ug/l  
 RT: 2.715 min Scan# 267  
 Delta R.T. 0.000 min  
 Lab File: VX047345.D  
 Acq: 14 Aug 2025 17:26

Tgt Ion: 43 Resp: 947  
 Ion Ratio Lower Upper  
 43 100  
 74 5.1 17.7 26.5#

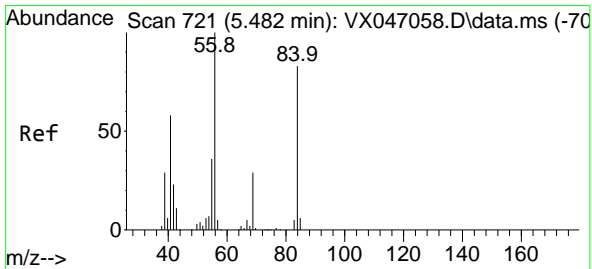
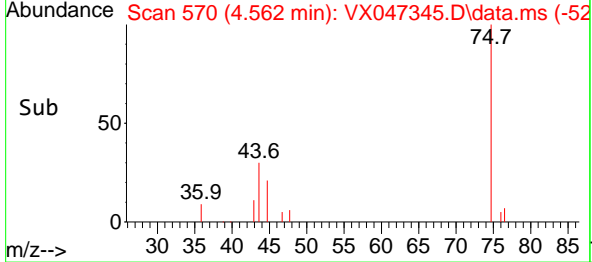
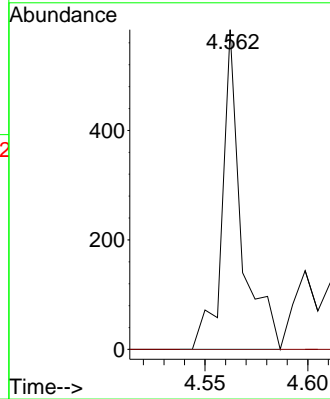
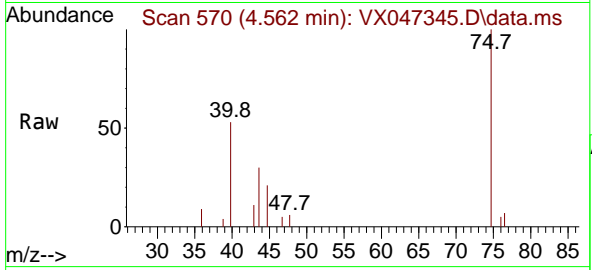




#25  
 2-Butanone  
 Concen: 0.228 ug/l  
 RT: 4.562 min Scan# 51  
 Delta R.T. 0.000 min  
 Lab File: VX047345.D  
 Acq: 14 Aug 2025 17:26

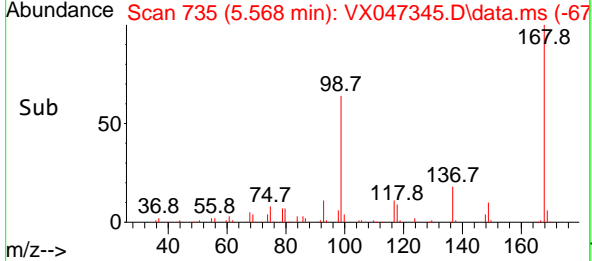
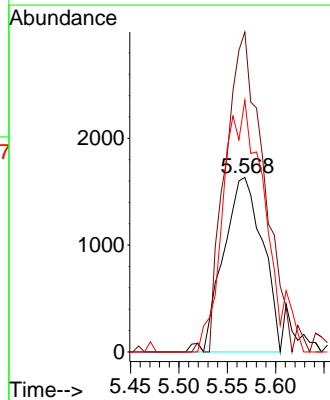
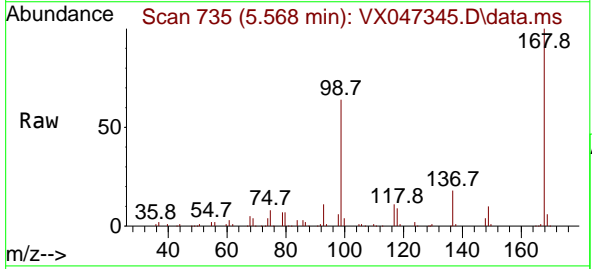
Instrument : MSVOA\_X  
 ClientSampleId : TW-518R-ERE

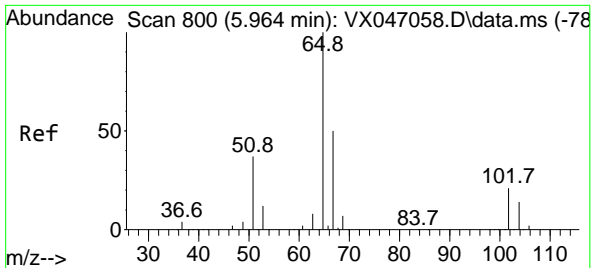
Tgt Ion: 43 Resp: 381  
 Ion Ratio Lower Upper  
 43 100  
 72 0.0 18.8 28.2#



#31  
 Cyclohexane  
 Concen: 0.857 ug/l  
 RT: 5.568 min Scan# 735  
 Delta R.T. 0.086 min  
 Lab File: VX047345.D  
 Acq: 14 Aug 2025 17:26

Tgt Ion: 56 Resp: 4598  
 Ion Ratio Lower Upper  
 56 100  
 69 183.4 23.3 34.9#  
 84 144.3 66.5 99.7#





#33  
 1,2-Dichloroethane-d4  
 Concen: 59.458 ug/l  
 RT: 5.970 min Scan# 801  
 Delta R.T. 0.006 min  
 Lab File: VX047345.D  
 Acq: 14 Aug 2025 17:26

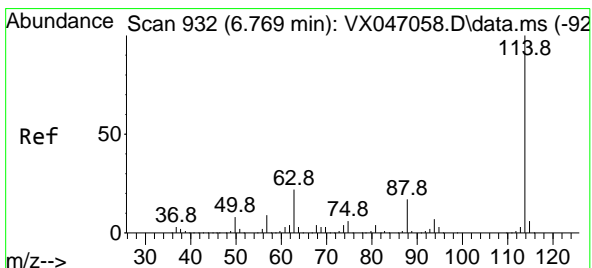
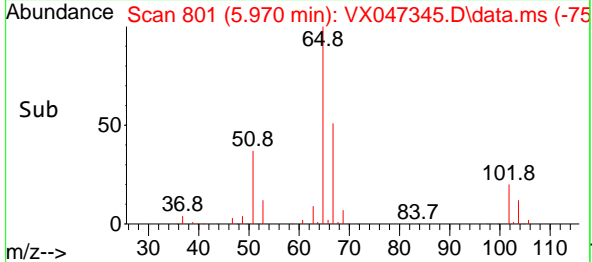
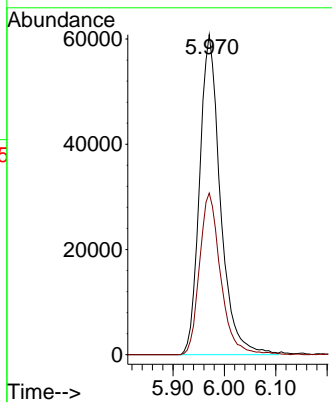
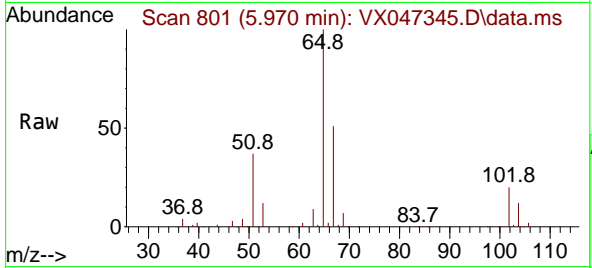
Instrument :

MSVOA\_X

ClientSampleId :

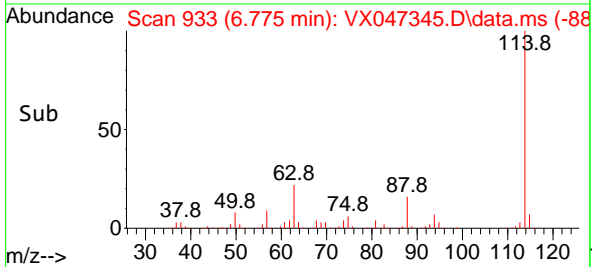
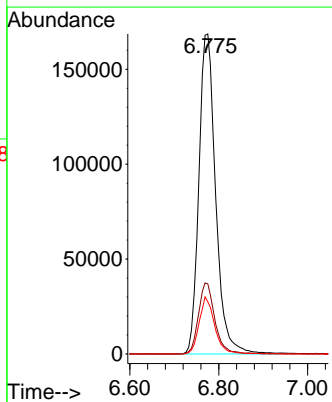
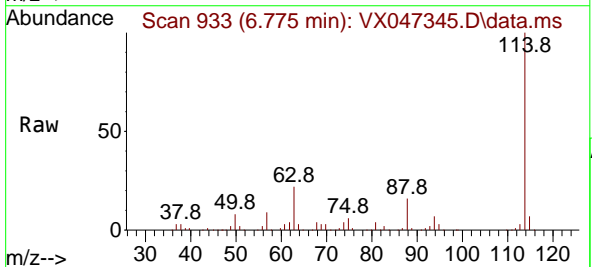
TW-518R-ERE

Tgt Ion: 65 Resp: 170697  
 Ion Ratio Lower Upper  
 65 100  
 67 51.3 0.0 104.8

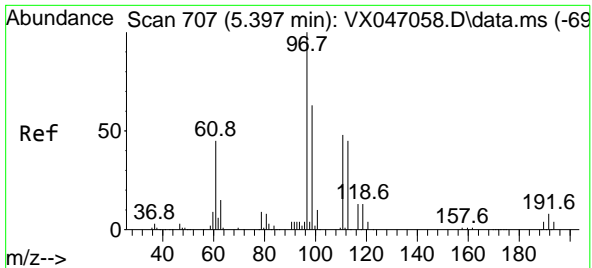


#34  
 1,4-Difluorobenzene  
 Concen: 50.000 ug/l  
 RT: 6.775 min Scan# 933  
 Delta R.T. 0.006 min  
 Lab File: VX047345.D  
 Acq: 14 Aug 2025 17:26

Tgt Ion: 114 Resp: 443658  
 Ion Ratio Lower Upper  
 114 100  
 63 21.9 0.0 43.2  
 88 16.3 0.0 33.8



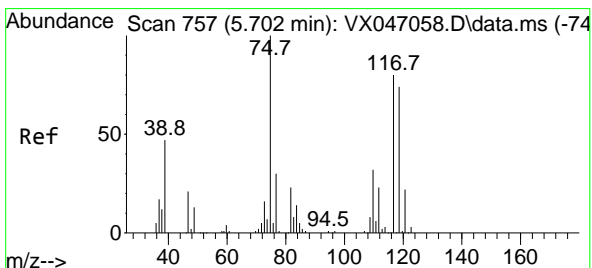
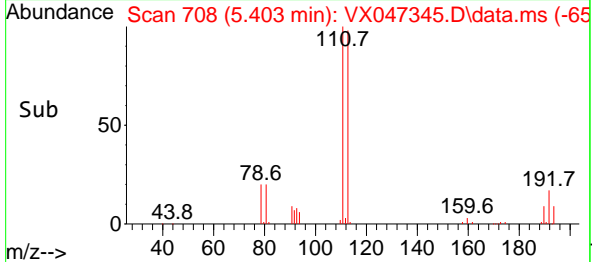
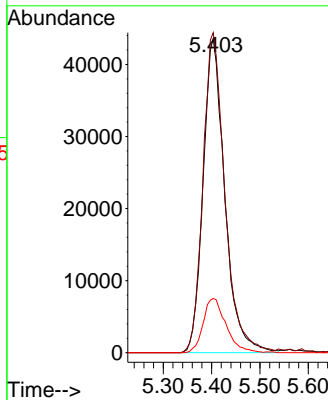
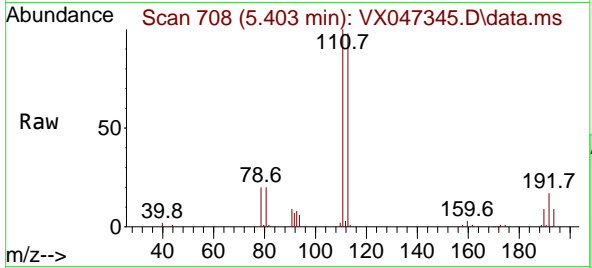




#35  
 Dibromofluoromethane  
 Concen: 49.578 ug/l  
 RT: 5.403 min Scan# 707  
 Delta R.T. 0.006 min  
 Lab File: VX047345.D  
 Acq: 14 Aug 2025 17:26

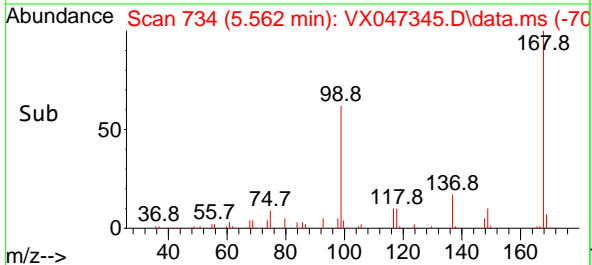
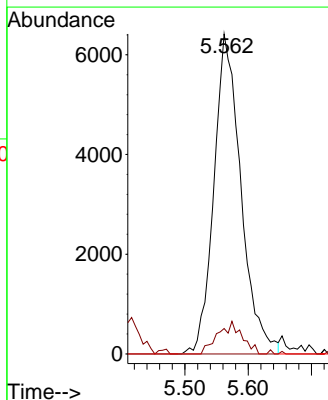
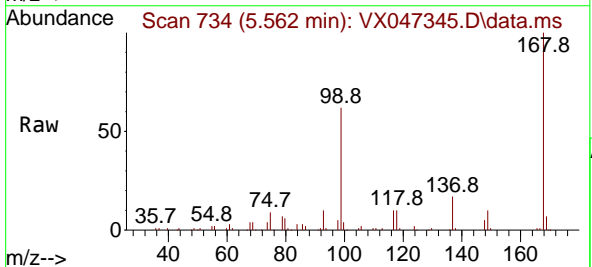
Instrument : MSVOA\_X  
 ClientSampleId : TW-518R-ERE

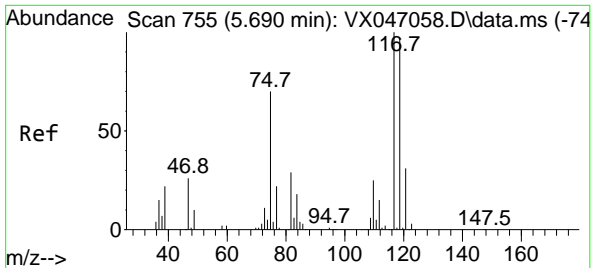
Tgt Ion:113 Resp: 135809  
 Ion Ratio Lower Upper  
 113 100  
 111 102.6 82.6 124.0  
 192 18.2 14.9 22.3



#36  
 1,1-Dichloropropene  
 Concen: 4.073 ug/l  
 RT: 5.562 min Scan# 734  
 Delta R.T. -0.140 min  
 Lab File: VX047345.D  
 Acq: 14 Aug 2025 17:26

Tgt Ion: 75 Resp: 19020  
 Ion Ratio Lower Upper  
 75 100  
 110 9.1 17.2 51.5#  
 77 0.0 25.1 37.7#



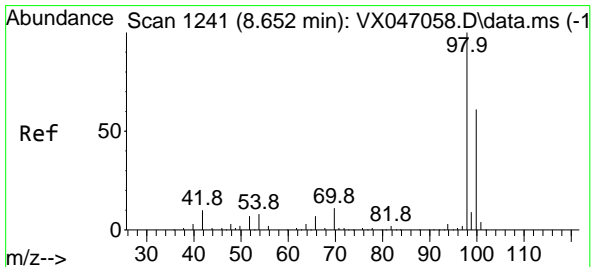
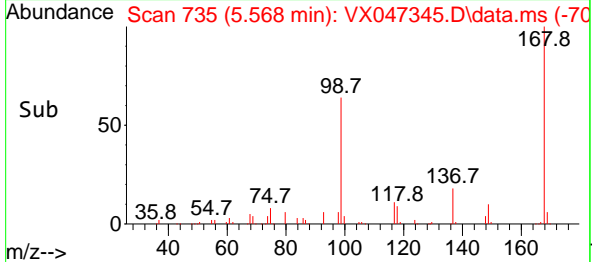
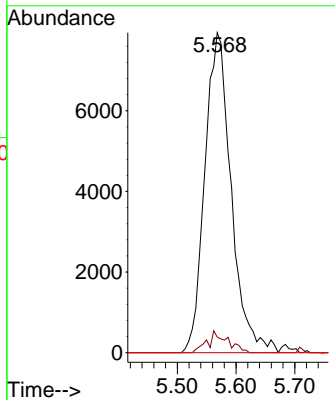
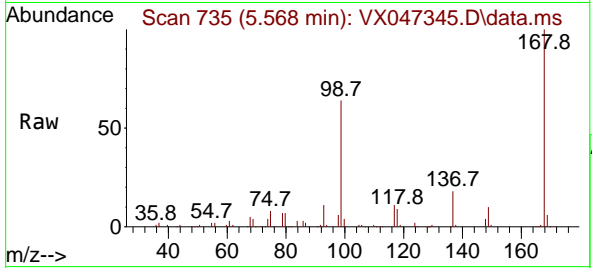


#38  
 Carbon Tetrachloride  
 Concen: 4.955 ug/l  
 RT: 5.568 min Scan# 711  
 Delta R.T. -0.122 min  
 Lab File: VX047345.D  
 Acq: 14 Aug 2025 17:26

Instrument : MSVOA\_X  
 ClientSampleId : TW-518R-ERE

Tgt Ion:117 Resp: 24693

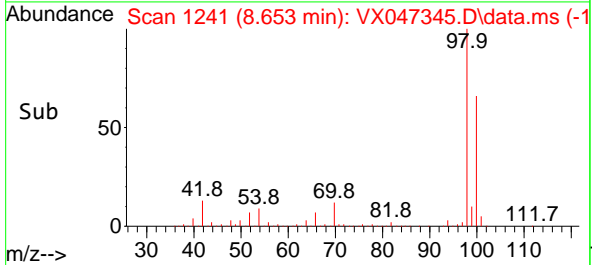
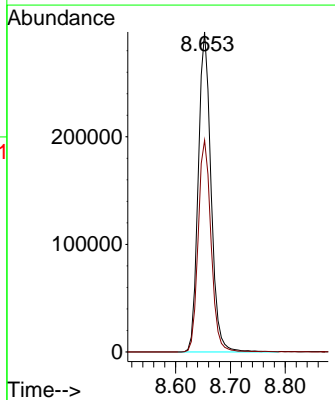
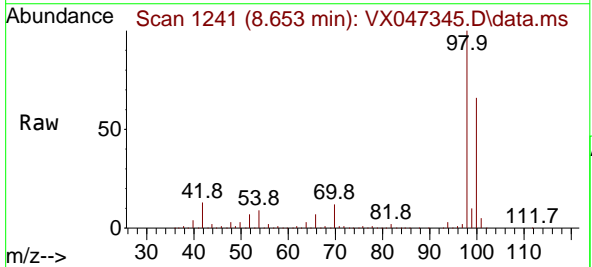
Ion	Ratio	Lower	Upper
117	100		
119	4.8	76.6	115.0#
121	0.0	24.4	36.6#

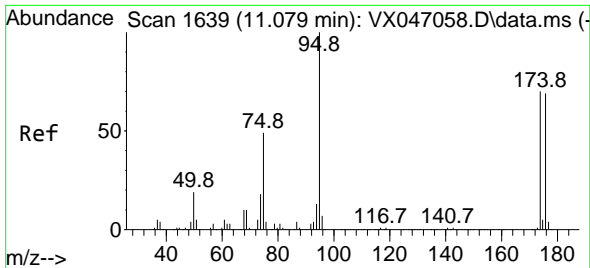


#50  
 Toluene-d8  
 Concen: 54.281 ug/l  
 RT: 8.653 min Scan# 1241  
 Delta R.T. 0.000 min  
 Lab File: VX047345.D  
 Acq: 14 Aug 2025 17:26

Tgt Ion: 98 Resp: 481532

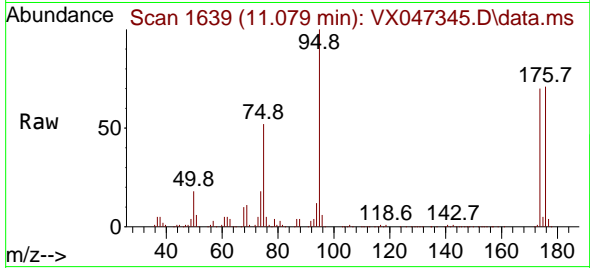
Ion	Ratio	Lower	Upper
98	100		
100	66.7	53.3	79.9



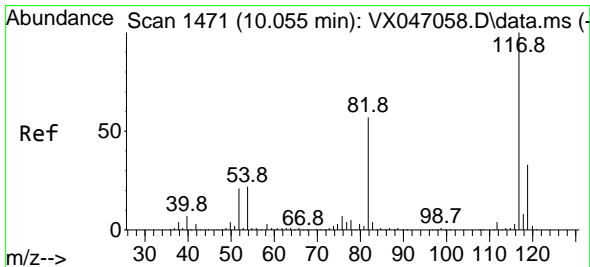
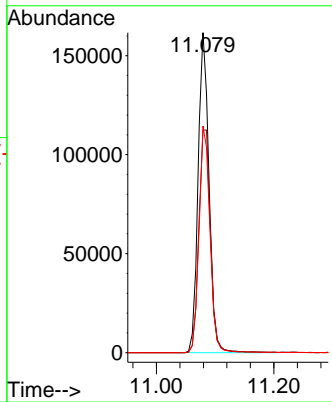
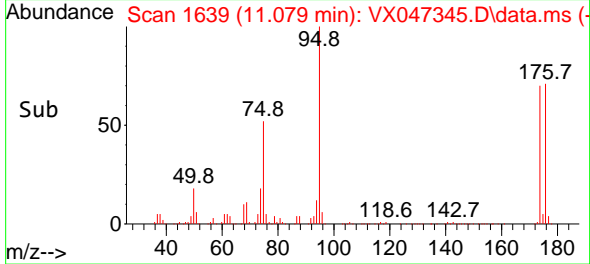


#62  
 4-Bromofluorobenzene  
 Concen: 54.163 ug/l  
 RT: 11.079 min Scan# 1639  
 Delta R.T. 0.000 min  
 Lab File: VX047345.D  
 Acq: 14 Aug 2025 17:26

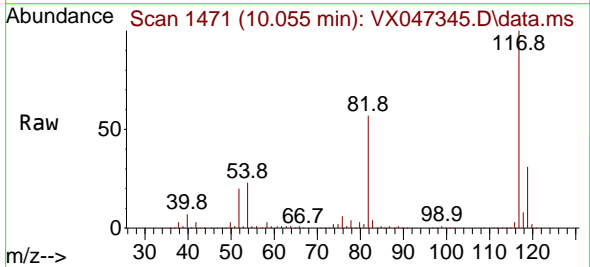
Instrument : MSVOA\_X  
 ClientSampleId : TW-518R-ERE



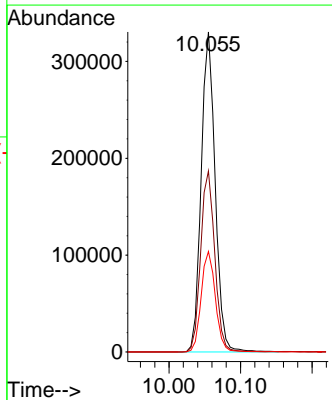
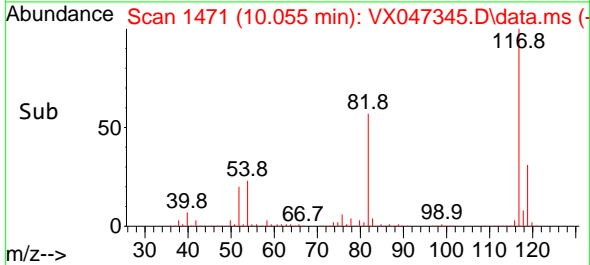
Tgt Ion: 95 Resp: 207062  
 Ion Ratio Lower Upper  
 95 100  
 174 74.6 0.0 144.6  
 176 71.2 0.0 139.6

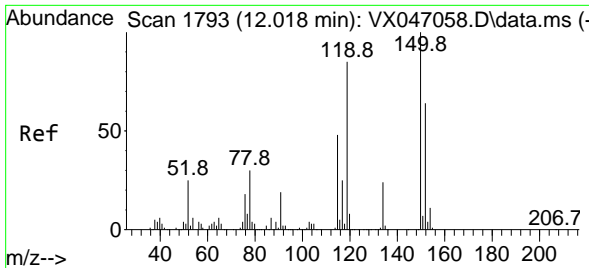


#63  
 Chlorobenzene-d5  
 Concen: 50.000 ug/l  
 RT: 10.055 min Scan# 1471  
 Delta R.T. 0.000 min  
 Lab File: VX047345.D  
 Acq: 14 Aug 2025 17:26



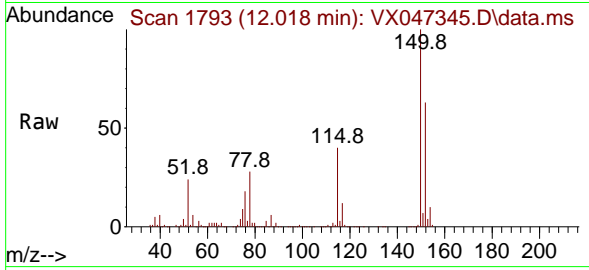
Tgt Ion: 117 Resp: 448334  
 Ion Ratio Lower Upper  
 117 100  
 82 56.5 45.4 68.2  
 119 31.4 26.1 39.1



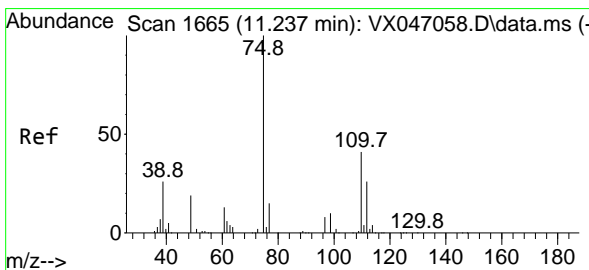
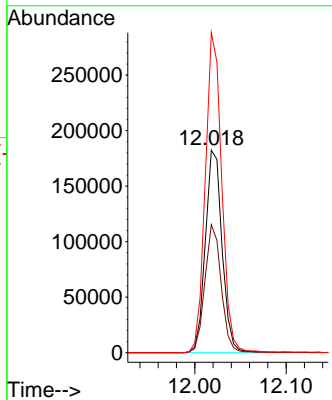
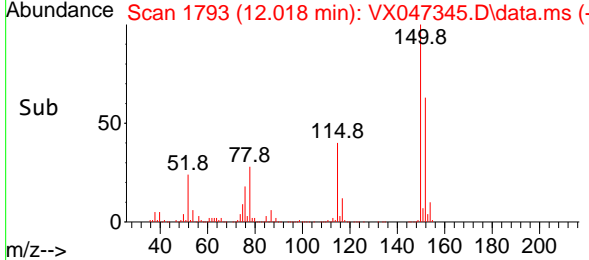


#72  
 1,4-Dichlorobenzene-d4  
 Concen: 50.000 ug/l  
 RT: 12.018 min Scan# 11  
 Delta R.T. 0.000 min  
 Lab File: VX047345.D  
 Acq: 14 Aug 2025 17:26

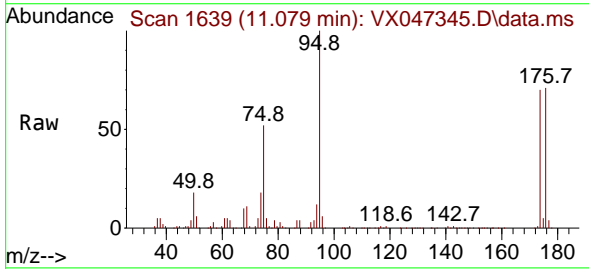
Instrument :  
 MSVOA\_X  
 ClientSampleId :  
 TW-518R-ERE



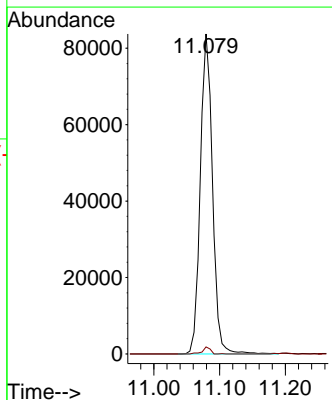
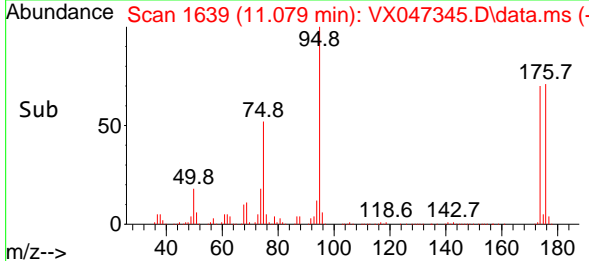
Tgt Ion:152 Resp: 231965  
 Ion Ratio Lower Upper  
 152 100  
 115 61.6 45.6 136.7  
 150 155.5 0.0 354.6

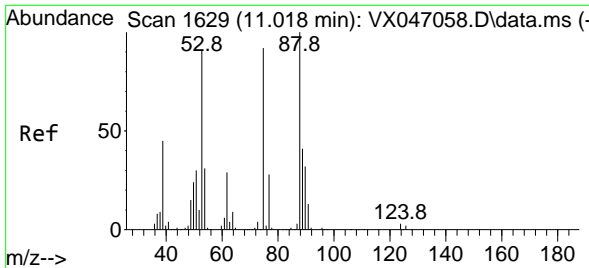


#76  
 1,2,3-Trichloropropane  
 Concen: 25.125 ug/l  
 RT: 11.079 min Scan# 1639  
 Delta R.T. -0.158 min  
 Lab File: VX047345.D  
 Acq: 14 Aug 2025 17:26



Tgt Ion: 75 Resp: 107874  
 Ion Ratio Lower Upper  
 75 100  
 77 1.4 21.6 65.0#



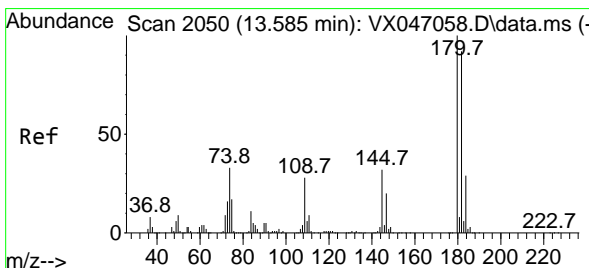
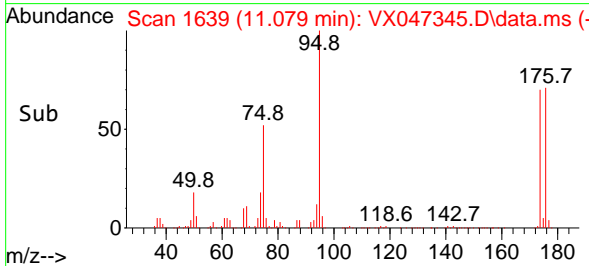
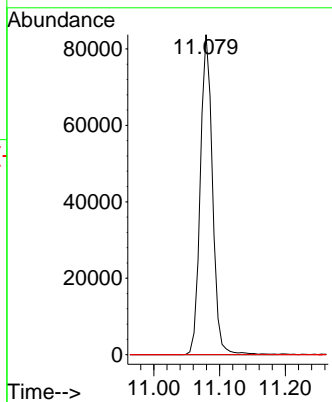
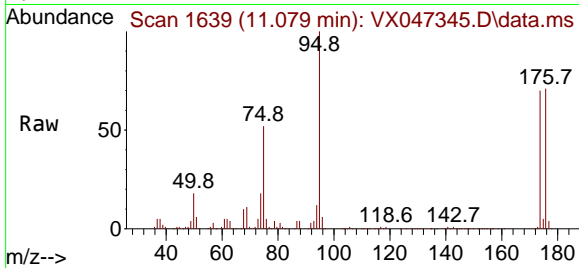


#81  
 trans-1,4-Dichloro-2-butene  
 Concen: 64.731 ug/l  
 RT: 11.079 min Scan# 1639  
 Delta R.T. 0.061 min  
 Lab File: VX047345.D  
 Acq: 14 Aug 2025 17:26

Instrument : MSVOA\_X  
 ClientSampleId : TW-518R-ERE

Tgt Ion: 75 Resp: 107874

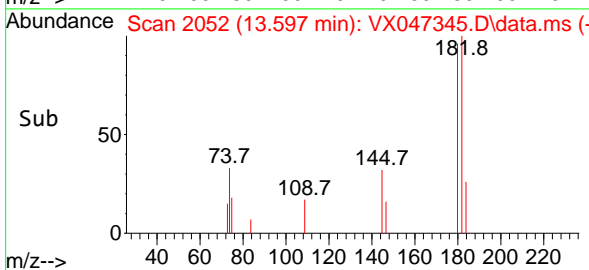
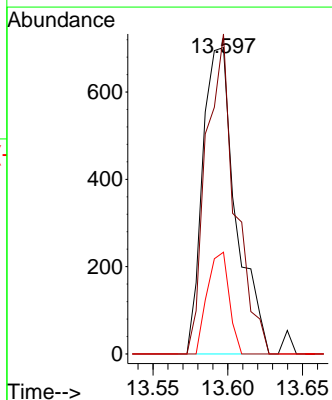
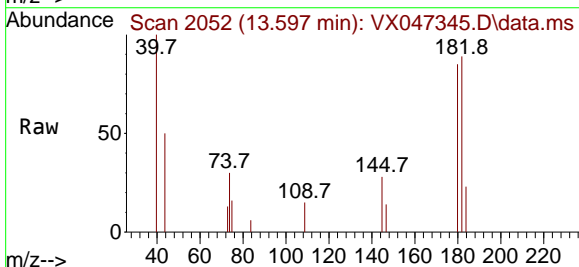
Ion	Ratio	Lower	Upper
75	100		
53	0.0	84.2	126.4#
89	0.0	36.0	54.0#

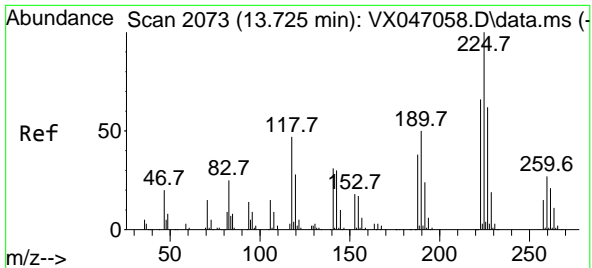


#93  
 1,2,4-Trichlorobenzene  
 Concen: 0.205 ug/l  
 RT: 13.597 min Scan# 2052  
 Delta R.T. 0.013 min  
 Lab File: VX047345.D  
 Acq: 14 Aug 2025 17:26

Tgt Ion: 180 Resp: 1082

Ion	Ratio	Lower	Upper
180	100		
182	91.3	47.3	141.8
145	21.8	16.4	49.1





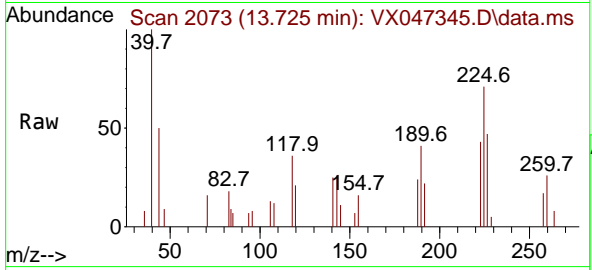
#94  
 Hexachlorobutadiene  
 Concen: 0.461 ug/l  
 RT: 13.725 min Scan# 20  
 Delta R.T. 0.000 min  
 Lab File: VX047345.D  
 Acq: 14 Aug 2025 17:26

Instrument :

MSVOA\_X

ClientSampleId :

TW-518R-ERE



Tgt Ion: 225 Resp: 826

Ion	Ratio	Lower	Upper
225	100		
223	64.2	31.6	95.0
227	66.0	32.9	98.6

