

Data Path : Z:\VOASRV\HPCHEM1\MSVOA X\DATA\VX081518\
 Data File : VX004083.D
 Acq On : 15 Aug 2018 20:01
 Operator : JC/MD
 Sample : J4473-05
 Misc : 5.0mL/MSVOA X/WATER
 ALS Vial : 15 Sample Multiplier: 1

Instrument :
 MSVOA_X
 ClientSampleId :
 KY038PS036-180813

Quant Time: Aug 16 16:57:31 2018
 Quant Method : Z:\VOASRV\HPCHEM1\MSVOA_X\METHOD\82X081418W.M
 Quant Title : SW846 8260
 QLast Update : Tue Aug 14 13:27:25 2018
 Response via : Initial Calibration

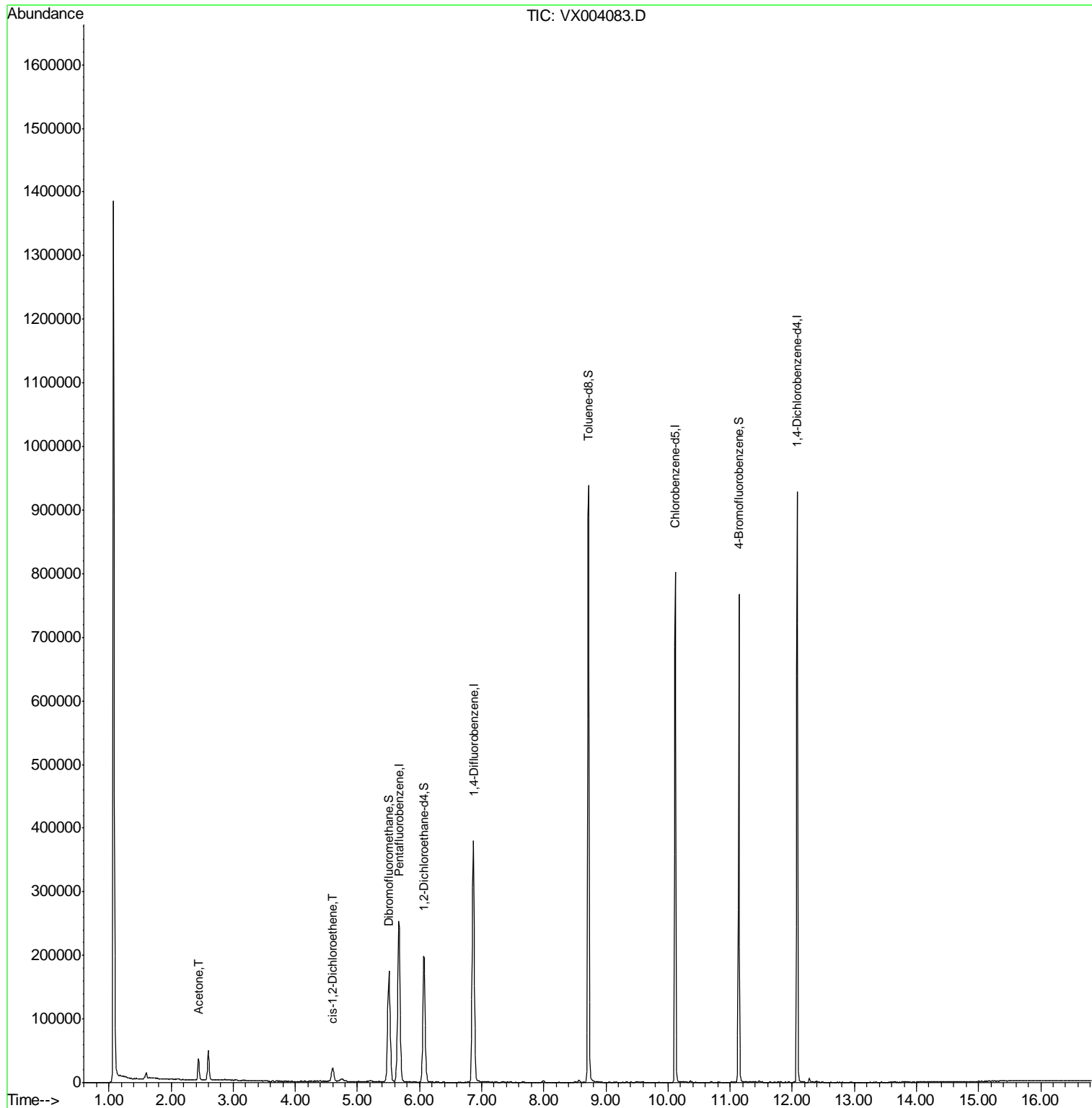
Internal Standards	R.T.	QIon	Response	Conc	Units	Dev(Min)
1) Pentafluorobenzene	5.67	168	255543	50.00	ug/l	0.00
34) 1,4-Difluorobenzene	6.87	114	384066	50.00	ug/l	0.00
63) Chlorobenzene-d5	10.12	117	361469	50.00	ug/l	0.00
72) 1,4-Dichlorobenzene-d4	12.08	152	191057	50.00	ug/l	0.00
System Monitoring Compounds						
33) 1,2-Dichloroethane-d4	6.07	65	182874	50.79	ug/l	0.00
Spiked Amount	50.000		Recovery	=	101.58%	
35) Dibromofluoromethane	5.51	113	149162	51.89	ug/l	0.00
Spiked Amount	50.000		Recovery	=	103.78%	
50) Toluene-d8	8.72	98	549790	47.18	ug/l	0.00
Spiked Amount	50.000		Recovery	=	94.36%	
62) 4-Bromofluorobenzene	11.14	95	184066	43.55	ug/l	0.00
Spiked Amount	50.000		Recovery	=	87.10%	
Target Compounds						
16) Acetone	2.44	43	36650	19.58	ug/l	97
27) cis-1,2-Dichloroethene	4.60	96	13389	3.90	ug/l	99

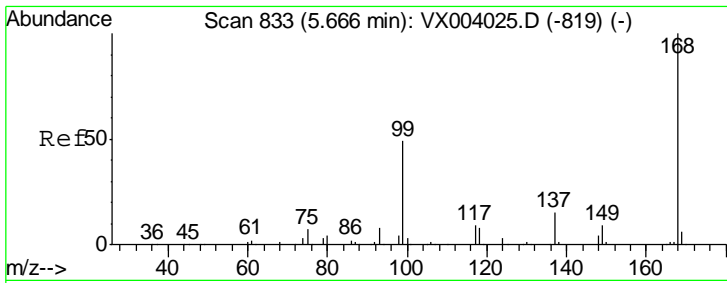
(#) = qualifier out of range (m) = manual integration (+) = signals summed

Data Path : Z:\VOASRV\HPCHEM1\MSVOA X\DATA\VX081518\
Data File : VX004083.D
Acq On : 15 Aug 2018 20:01
Operator : JC/MD
Sample : J4473-05
Misc : 5.0mL/MSVOA X/WATER
ALS Vial : 15 Sample Multiplier: 1

Instrument :
MSVOA_X
ClientSampleId :
KY038PS036-180813

Quant Time: Aug 16 16:57:31 2018
Quant Method : Z:\VOASRV\HPCHEM1\MSVOA_X\METHOD\82X081418W.M
Quant Title : SW846 8260
QLast Update : Tue Aug 14 13:27:25 2018
Response via : Initial Calibration

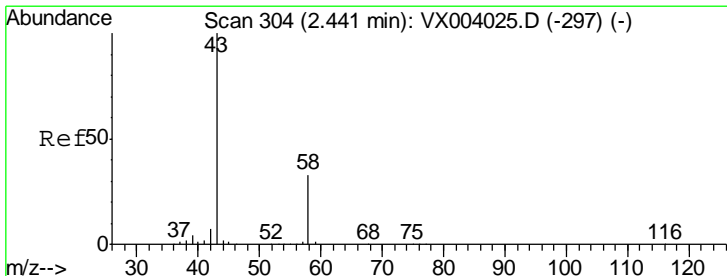
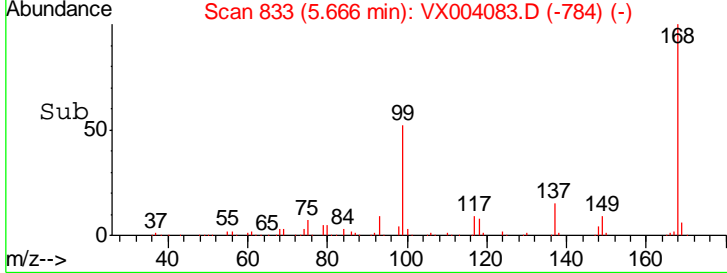
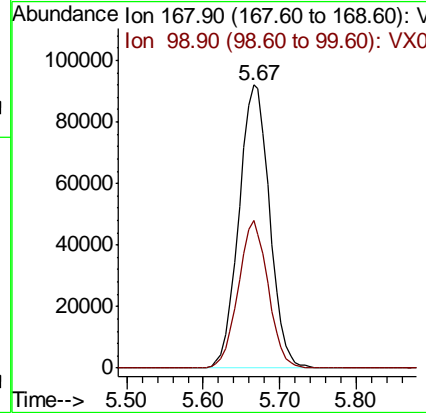
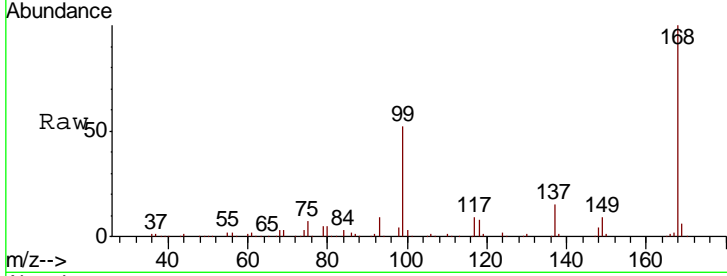




#1
 Pentafluorobenzene
 Concen: 50.00 ug/l
 RT: 5.67 min Scan# 833
 Delta R.T. -0.00 min
 Lab File: VX004083.D
 Acq: 15 Aug 2018 20:01

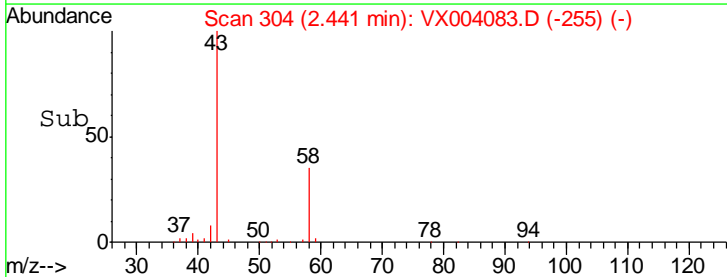
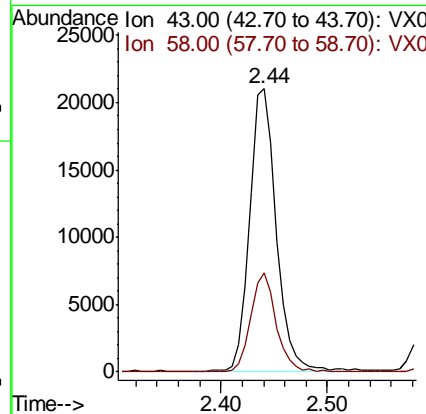
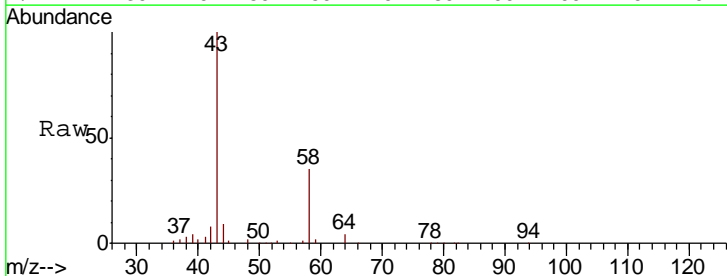
Instrument : MSVOA_X
 ClientSampleId : KY038PS036-180813

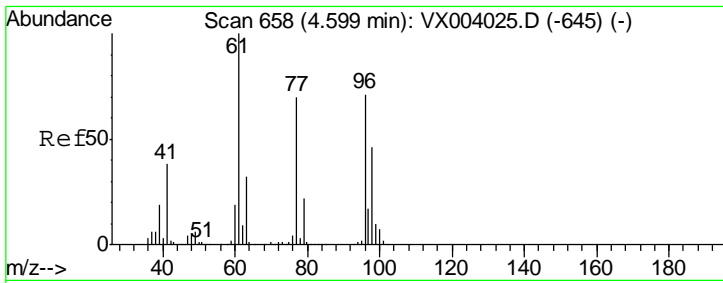
Tot Ion: 168 Resp: 255543
 Ion Ratio Lower Upper
 168 100
 99 52.0 40.1 60.1



#16
 Acetone
 Concen: 19.58 ug/l
 RT: 2.44 min Scan# 304
 Delta R.T. -0.00 min
 Lab File: VX004083.D
 Acq: 15 Aug 2018 20:01

Tgt Ion: 43 Resp: 36650
 Ion Ratio Lower Upper
 43 100
 58 35.0 26.4 39.6

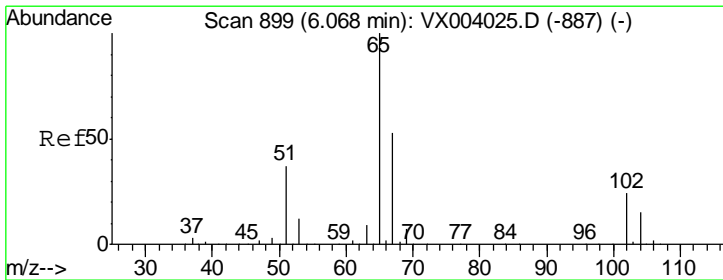
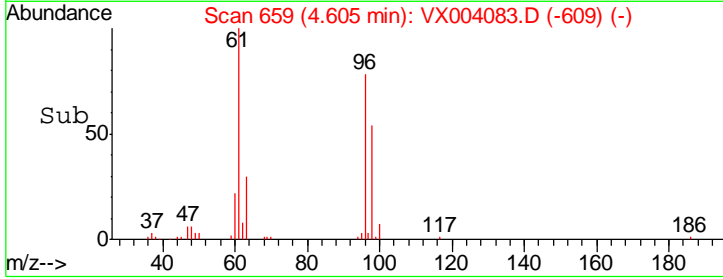
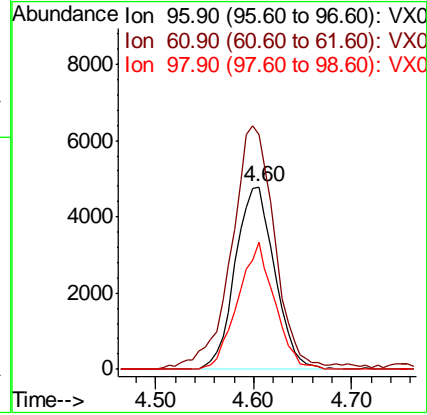
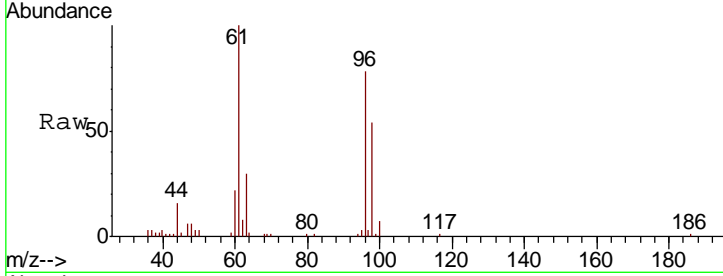




#27
 cis-1,2-Dichloroethene
 Concen: 3.90 ug/l
 RT: 4.60 min Scan# 659
 Delta R.T. 0.01 min
 Lab File: VX004083.D
 Acq: 15 Aug 2018 20:01

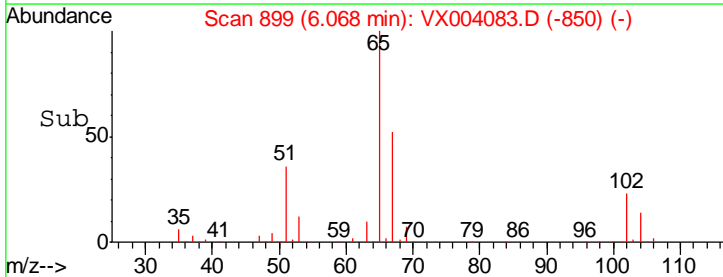
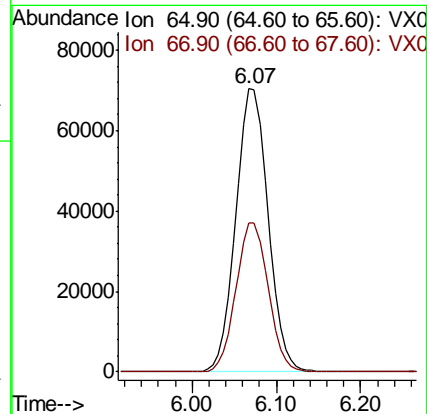
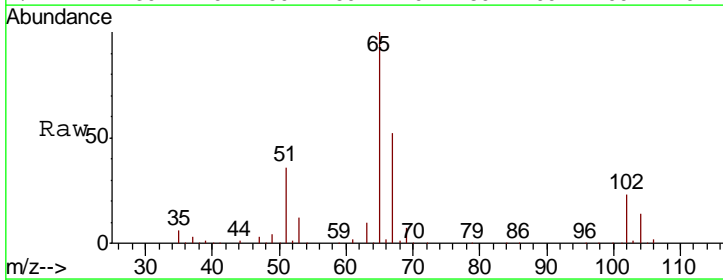
Instrument :
 MSVOA_X
 ClientSampled :
 KY038PS036-180813

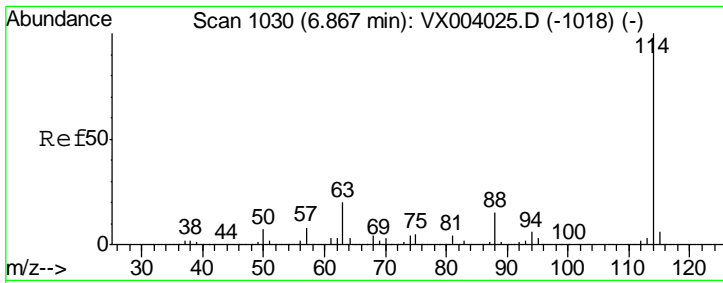
Tgt Ion	Resp	Lower	Upper
96	13389		
61	146.2	0.0	293.0
98	65.0	0.0	131.8



#33
 1,2-Dichloroethane-d4
 Concen: 50.79 ug/l
 RT: 6.07 min Scan# 899
 Delta R.T. -0.00 min
 Lab File: VX004083.D
 Acq: 15 Aug 2018 20:01

Tgt Ion	Resp	Lower	Upper
65	182874		
67	52.7	0.0	105.8

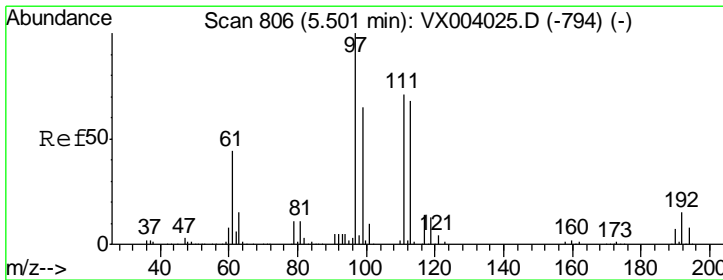
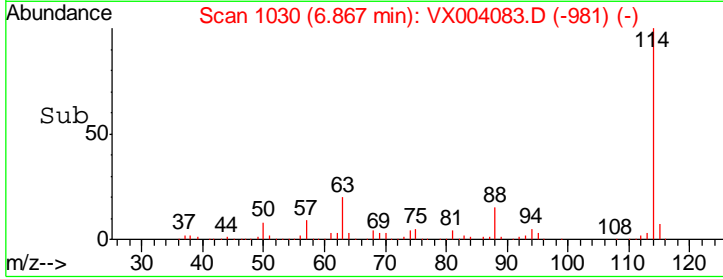
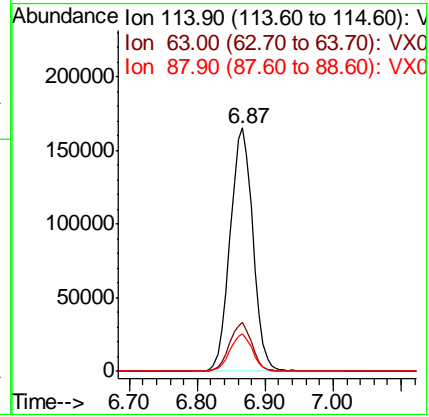
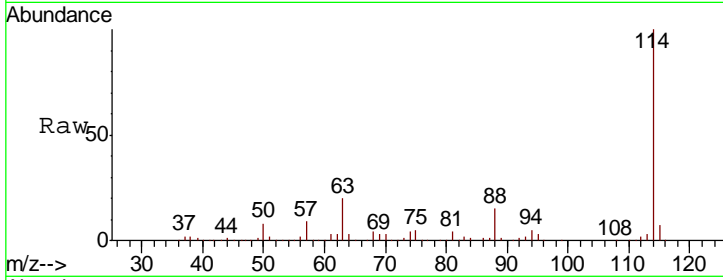




#34
 1,4-Difluorobenzene
 Concen: 50.00 ug/l
 RT: 6.87 min Scan# 1030
 Delta R.T. -0.00 min
 Lab File: VX004083.D
 Acq: 15 Aug 2018 20:01

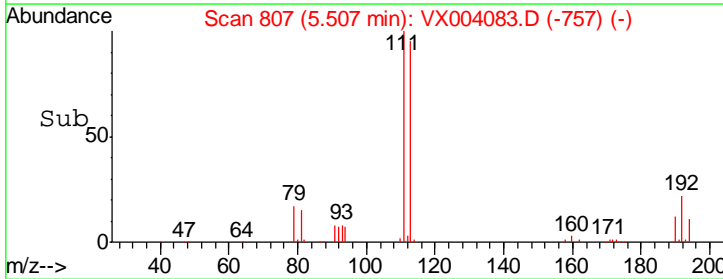
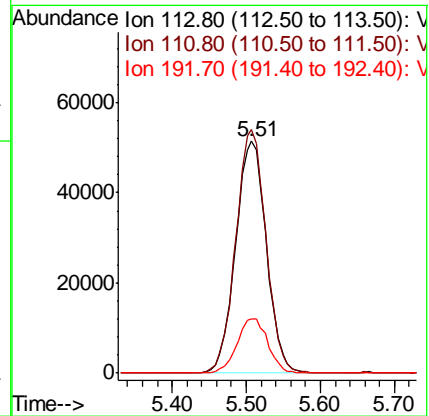
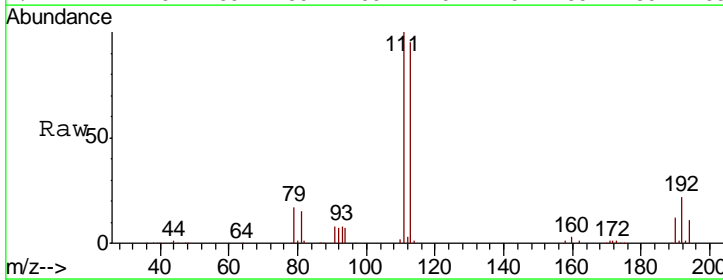
Instrument : MSVOA_X
 ClientSampleId : KY038PS036-180813

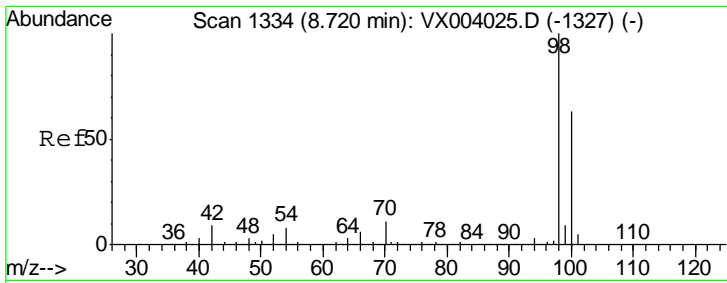
Tgt Ion	Resp	Lower	Upper
114	100		
63	20.3	0.0	39.0
88	15.5	0.0	32.0



#35
 Dibromofluoromethane
 Concen: 51.89 ug/l
 RT: 5.51 min Scan# 807
 Delta R.T. 0.01 min
 Lab File: VX004083.D
 Acq: 15 Aug 2018 20:01

Tgt Ion	Resp	Lower	Upper
113	100		
111	102.8	82.0	123.0
192	23.4	19.0	28.4

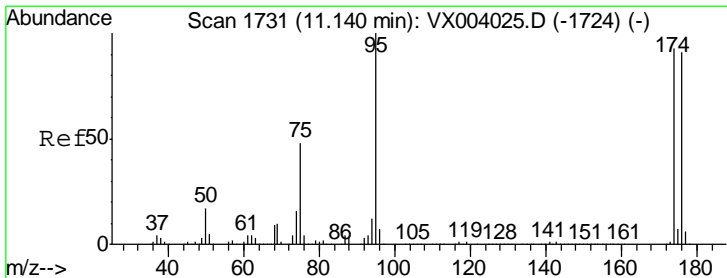
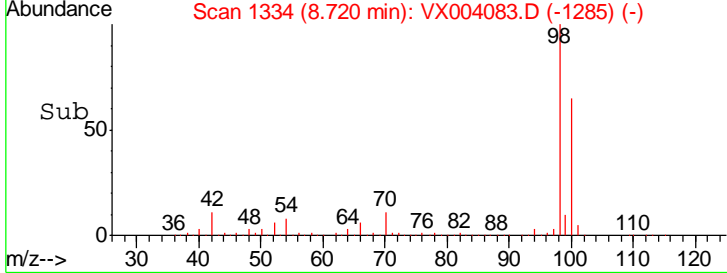
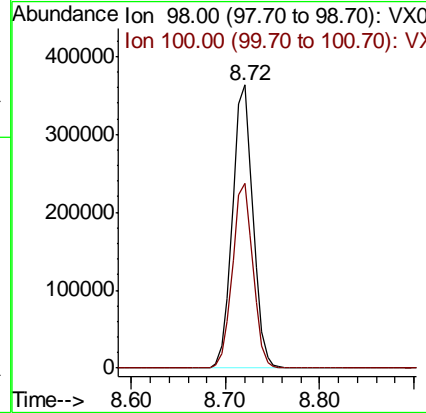
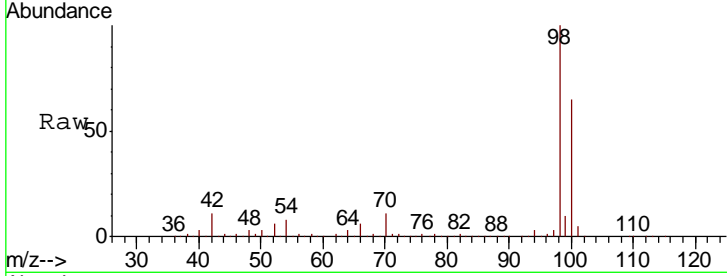




#50
 Toluene-d8
 Concen: 47.18 ug/l
 RT: 8.72 min Scan# 1334
 Delta R.T. -0.00 min
 Lab File: VX004083.D
 Acq: 15 Aug 2018 20:01

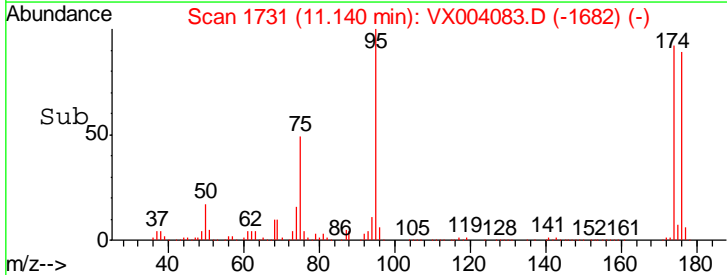
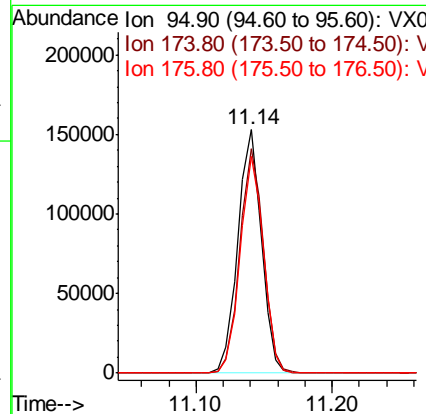
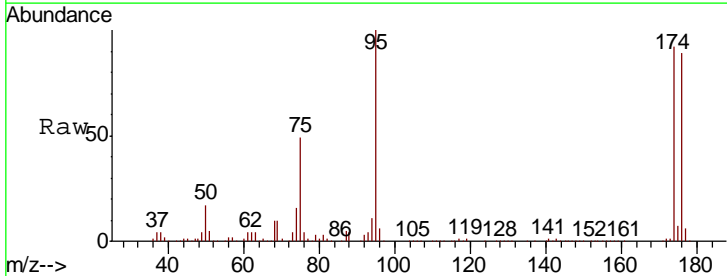
Instrument :
 MSVOA_X
ClientSampled :
 KY038PS036-180813

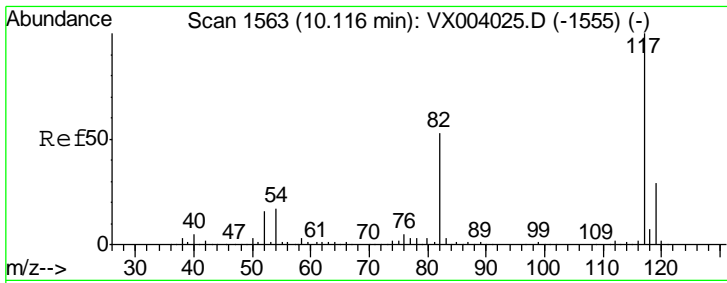
Tgt Ion	Resp	Lower	Upper
98	549790		
100	65.1	53.3	79.9



#62
 4-Bromofluorobenzene
 Concen: 43.55 ug/l
 RT: 11.14 min Scan# 1731
 Delta R.T. -0.00 min
 Lab File: VX004083.D
 Acq: 15 Aug 2018 20:01

Tgt Ion	Resp	Lower	Upper
95	184066		
174	92.9	0.0	182.8
176	89.0	0.0	179.0

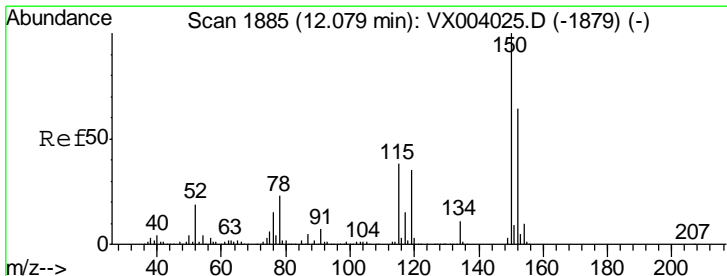
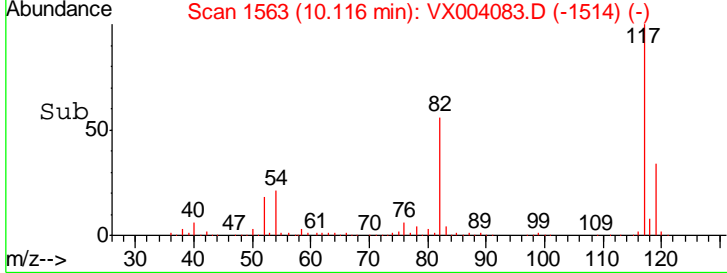
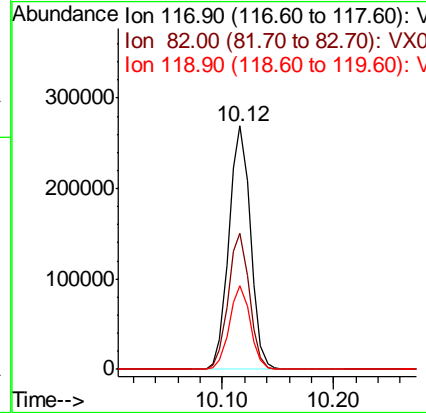
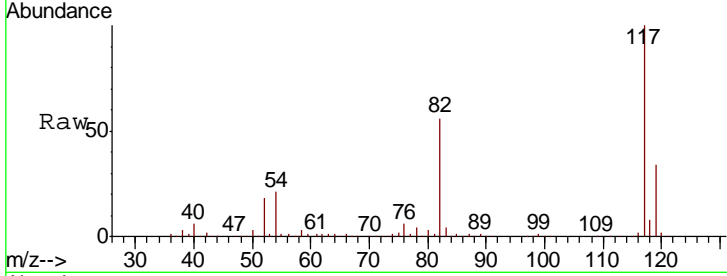




#63
 Chlorobenzene-d5
 Concen: 50.00 ug/l
 RT: 10.12 min Scan# 1563
 Delta R.T. -0.00 min
 Lab File: VX004083.D
 Acq: 15 Aug 2018 20:01

Instrument : MSVOA_X
 ClientSampled : KY038PS036-180813

Tgt Ion	Resp	Lower	Upper
117	361469		
82	56.1	45.4	68.0
119	34.5	26.6	40.0



#72
 1,4-Dichlorobenzene-d4
 Concen: 50.00 ug/l
 RT: 12.08 min Scan# 1885
 Delta R.T. -0.00 min
 Lab File: VX004083.D
 Acq: 15 Aug 2018 20:01

Tgt Ion	Resp	Lower	Upper
152	191057		
152	100		
115	55.5	39.1	117.3
150	155.0	0.0	349.2

