

Data Path : Z:\voasrv\HPCHEM1\MSVOA_X\Data\VX081522\
 Data File : VX030619.D
 Acq On : 15 Aug 2022 10:55
 Operator : JC/MD
 Sample : VX0815MBL01
 Misc : 5.00g/5mL/100uL/5.00mL/MSVOA_X/MEOH
 ALS Vial : 3 Sample Multiplier: 1

Instrument :
 MSVOA_X
 ClientSampleId :
 VBLK684

Integration Parameters: LSCINT.P

Integrator: RTE
 Smoothing : OFF Filtering: 5
 Sampling : 1 Min Area: 0 % of largest Peak
 Start Thrs: 0.2 Max Peaks: 100
 Stop Thrs : 0 Peak Location: TOP

If leading or trailing edge < 100 prefer < Baseline drop else tangent >
 Peak separation: 5

Method : Z:\voasrv\HPCHEM1\MSVOA_X\Method\SFAMXML080422WMA.M
 Title : VOC Analysis

Signal : TIC: VX030619.D\data.ms

peak #	R.T. min	first scan	max scan	last scan	PK TY	peak height	corr. area	corr. % max.	% of total
1	1.368	43	46	57	rVB	95477	97428	10.36%	1.291%
2	1.673	92	96	104	rVB	81571	97678	10.39%	1.295%
3	2.307	194	200	210	rVB	181378	272359	28.96%	3.610%
4	2.410	215	217	218	rVB2	752	372	0.04%	0.005%
5	2.459	223	225	227	rVB2	487	359	0.04%	0.005%
6	2.514	230	234	238	rVB3	1127	1908	0.20%	0.025%
7	2.654	255	257	258	rVB	794	367	0.04%	0.005%
8	2.666	258	259	261	rBV2	549	464	0.05%	0.006%
9	2.794	275	280	282	rBV2	1345	2014	0.21%	0.027%
10	2.947	298	305	312	rVV2	7351	16756	1.78%	0.222%
11	3.038	319	320	325	rVB2	785	840	0.09%	0.011%
12	3.081	325	327	331	rBV2	763	1000	0.11%	0.013%
13	3.148	336	338	341	rVB	364	341	0.04%	0.005%
14	3.483	391	393	396	rBV	423	567	0.06%	0.008%
15	3.727	432	433	436	rBV2	543	563	0.06%	0.007%
16	3.977	473	474	479	rBV2	387	489	0.05%	0.006%
17	4.087	489	492	494	rBV	310	379	0.04%	0.005%
18	4.465	545	554	567	rBV	94244	291170	30.96%	3.859%
19	4.684	589	590	593	rVB2	769	541	0.06%	0.007%
20	4.709	593	594	597	rBV	675	515	0.05%	0.007%
21	5.056	638	651	669	rVV	135581	414913	44.12%	5.499%
22	5.202	673	675	677	rVB2	648	381	0.04%	0.005%
23	5.306	690	692	694	rBV2	415	425	0.05%	0.006%
24	5.330	694	696	699	rVB2	744	655	0.07%	0.009%
25	5.379	699	704	709	rBV5	1526	3567	0.38%	0.047%
26	5.538	728	730	731	rBV	1071	773	0.08%	0.010%
27	5.684	751	754	755	rBV	531	491	0.05%	0.007%
28	5.830	776	778	781	rBV2	323	437	0.05%	0.006%
29	5.971	787	801	819	rBV2	316889	940423	100.00%	12.464%
30	6.318	854	858	859	rBV2	407	440	0.05%	0.006%
31	6.538	890	894	897	rBV3	523	759	0.08%	0.010%
32	6.763	921	931	946	rBV	264012	627218	66.70%	8.313%
33	6.934	957	959	961	rBV2	455	443	0.05%	0.006%
34	6.952	961	962	968	rVB2	746	1061	0.11%	0.014%
35	6.995	968	969	972	rBV	513	508	0.05%	0.007%
36	7.104	981	987	997	rVV3	7639	19242	2.05%	0.255%

Data Path : Z:\voasrv\HPCHEM1\MSVOA_X\Data\VX081522\
 Data File : VX030619.D
 Acq On : 15 Aug 2022 10:55
 Operator : JC/MD
 Sample : VX0815MBL01
 Misc : 5.00g/5mL/100uL/5.00mL/MSVOA_X/MEOH
 ALS Vial : 3 Sample Multiplier: 1

Instrument :
 MSVOA_X
 ClientSampleId :
 VBLK684

Integration Parameters: LSCINT.P

Integrator: RTE
 Smoothing : OFF
 Sampling : 1
 Start Thrs: 0.2
 Stop Thrs : 0

Filtering: 5
 Min Area: 0 % of largest Peak
 Max Peaks: 100
 Peak Location: TOP

If leading or trailing edge < 100 prefer < Baseline drop else tangent >
 Peak separation: 5

Method : Z:\voasrv\HPCHEM1\MSVOA_X\Method\SFAMXML080422WMA.M
 Title : VOC Analysis

37	7.178	997	999	1001	rVB2	537	351	0.04%	0.005%
38	7.312	1012	1021	1037	rBV	202388	455190	48.40%	6.033%
39	7.476	1046	1048	1052	rBV2	670	863	0.09%	0.011%
40	7.543	1057	1059	1063	rBV2	599	802	0.09%	0.011%
41	7.641	1073	1075	1080	rVV2	482	635	0.07%	0.008%
42	7.928	1119	1122	1126	rVV2	1813	2798	0.30%	0.037%
43	8.013	1134	1136	1138	rBV2	474	466	0.05%	0.006%
44	8.251	1170	1175	1180	rVB4	2283	3913	0.42%	0.052%
45	8.324	1181	1187	1199	rVV	136400	227256	24.17%	3.012%
46	8.482	1207	1213	1218	rBV5	1410	2956	0.31%	0.039%
47	8.574	1226	1228	1231	rBV2	511	555	0.06%	0.007%
48	8.647	1234	1240	1250	rBV	425229	679254	72.23%	9.003%
49	8.860	1272	1275	1276	rBV2	307	339	0.04%	0.004%
50	8.952	1283	1290	1303	rBV	104211	152929	16.26%	2.027%
51	9.037	1303	1304	1308	rVB	804	614	0.07%	0.008%
52	9.135	1319	1320	1323	rBV	578	433	0.05%	0.006%
53	9.257	1337	1340	1341	rBV	462	376	0.04%	0.005%
54	9.385	1355	1361	1376	rBV	432708	625268	66.49%	8.287%
55	9.702	1409	1413	1419	rBV4	2757	4596	0.49%	0.061%
56	9.988	1455	1460	1461	rBV2	700	920	0.10%	0.012%
57	10.055	1465	1471	1482	rBV	536565	720364	76.60%	9.547%
58	10.177	1489	1491	1492	rBV	468	382	0.04%	0.005%
59	10.311	1507	1513	1516	rVB2	1225	1647	0.18%	0.022%
60	10.421	1529	1531	1533	rVB2	501	437	0.05%	0.006%
61	10.451	1533	1536	1537	rBV2	496	440	0.05%	0.006%
62	10.647	1566	1568	1569	rVV2	912	745	0.08%	0.010%
63	10.836	1595	1599	1602	rBV3	430	798	0.08%	0.011%
64	10.964	1617	1620	1623	rBV2	738	959	0.10%	0.013%
65	11.085	1638	1640	1646	rBV3	406	688	0.07%	0.009%
66	11.195	1652	1658	1667	rBV	404282	520213	55.32%	6.895%
67	11.311	1675	1677	1678	rBV2	521	353	0.04%	0.005%
68	11.457	1696	1701	1706	rVB3	925	1650	0.18%	0.022%
69	11.689	1737	1739	1741	rBV2	346	358	0.04%	0.005%
70	11.756	1747	1750	1752	rBV2	1011	1196	0.13%	0.016%
71	11.884	1769	1771	1773	rBV	448	354	0.04%	0.005%
72	11.957	1780	1783	1784	rBV2	370	366	0.04%	0.005%
73	11.976	1784	1786	1788	rBV2	1350	1147	0.12%	0.015%
74	12.024	1789	1794	1805	rVV	558827	670480	71.30%	8.886%
75	12.323	1837	1843	1852	rVV	495385	643638	68.44%	8.531%
76	12.536	1876	1878	1881	rVV2	372	463	0.05%	0.006%

Data Path : Z:\voasrv\HPCHEM1\MSVOA_X\Data\VX081522\
 Data File : VX030619.D
 Acq On : 15 Aug 2022 10:55
 Operator : JC/MD
 Sample : VX0815MBL01
 Misc : 5.00g/5mL/100uL/5.00mL/MSVOA_X/MEOH
 ALS Vial : 3 Sample Multiplier: 1

Instrument :
 MSVOA_X
 ClientSampleId :
 VBLK684

Integration Parameters: LSCINT.P

Integrator: RTE
 Smoothing : OFF Filtering: 5
 Sampling : 1 Min Area: 0 % of largest Peak
 Start Thrs: 0.2 Max Peaks: 100
 Stop Thrs : 0 Peak Location: TOP

If leading or trailing edge < 100 prefer < Baseline drop else tangent >
 Peak separation: 5

Method : Z:\voasrv\HPCHEM1\MSVOA_X\Method\SFAMXML080422WMA.M
 Title : VOC Analysis

77	12.603	1887	1889	1895	rBV2	379	361	0.04%	0.005%
78	13.116	1970	1973	1979	rVB3	1125	1928	0.21%	0.026%
79	13.164	1979	1981	1984	rBV2	415	359	0.04%	0.005%
80	13.335	2007	2009	2012	rVB2	443	415	0.04%	0.006%
81	13.487	2032	2034	2038	rBV	544	654	0.07%	0.009%
82	13.536	2041	2042	2044	rVV	511	358	0.04%	0.005%
83	13.561	2044	2046	2048	rVV	466	341	0.04%	0.005%
84	13.591	2048	2051	2056	rVB3	1789	2472	0.26%	0.033%
85	13.695	2066	2068	2071	rVB2	667	600	0.06%	0.008%
86	13.731	2071	2074	2075	rBV2	478	410	0.04%	0.005%
87	13.780	2079	2082	2084	rBV4	1755	1791	0.19%	0.024%
88	13.847	2089	2093	2096	rVV3	420	699	0.07%	0.009%
89	13.963	2109	2112	2117	rVB3	2000	2156	0.23%	0.029%
90	14.134	2136	2140	2145	rBV4	949	1589	0.17%	0.021%
91	14.231	2153	2156	2160	rBV2	518	499	0.05%	0.007%
92	14.628	2219	2221	2224	rVB3	568	491	0.05%	0.007%
93	14.780	2244	2246	2250	rVB2	493	403	0.04%	0.005%
94	14.999	2280	2282	2283	rBV	610	403	0.04%	0.005%
95	15.085	2294	2296	2297	rBV	620	404	0.04%	0.005%
96	15.262	2324	2325	2327	rVB	562	336	0.04%	0.004%
97	15.944	2435	2437	2440	rBV3	965	1155	0.12%	0.015%
98	16.219	2481	2482	2484	rVB2	995	499	0.05%	0.007%
99	16.414	2512	2514	2516	rBV	894	661	0.07%	0.009%
100	16.725	2560	2565	2566	rBV2	707	1038	0.11%	0.014%

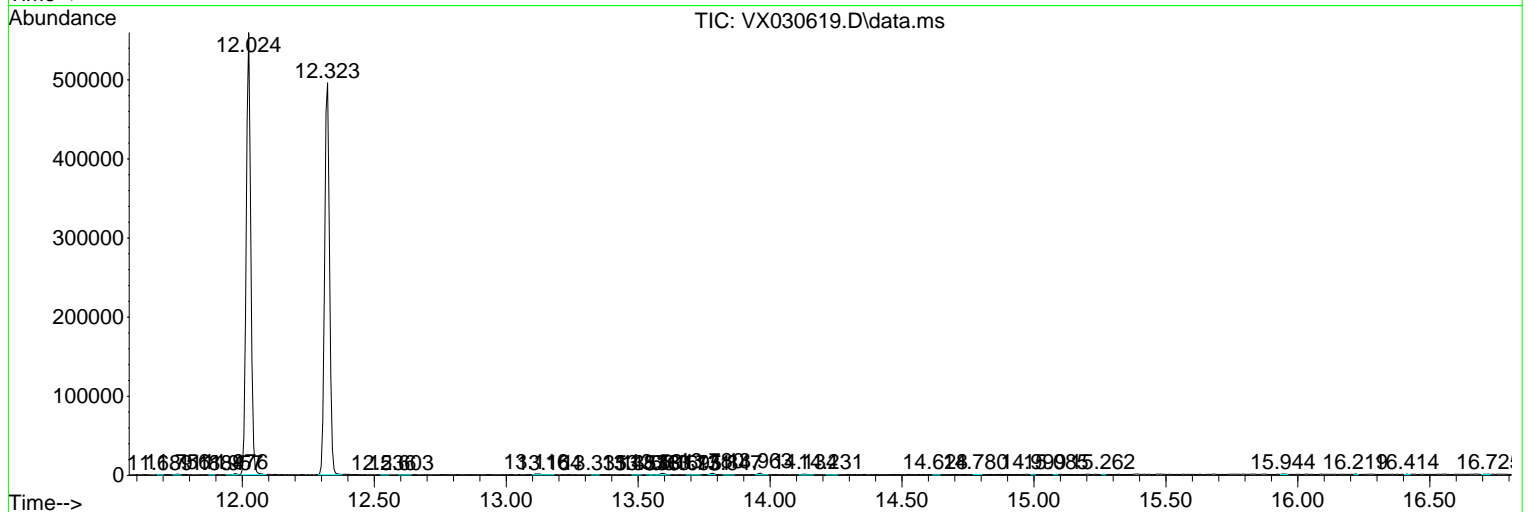
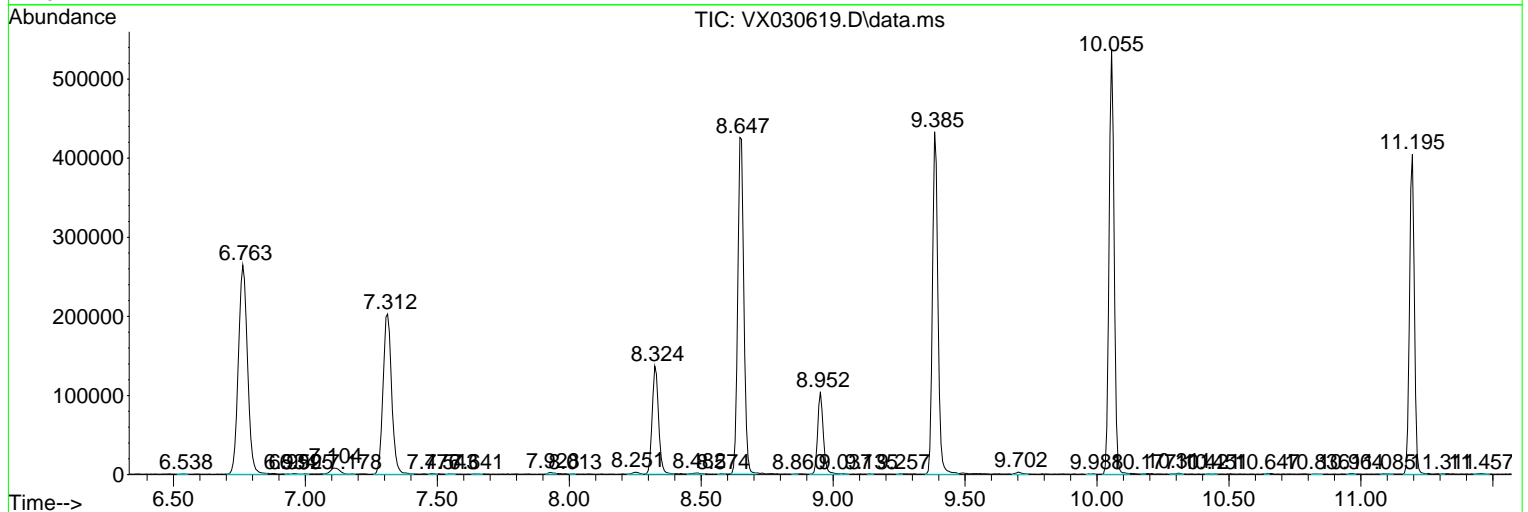
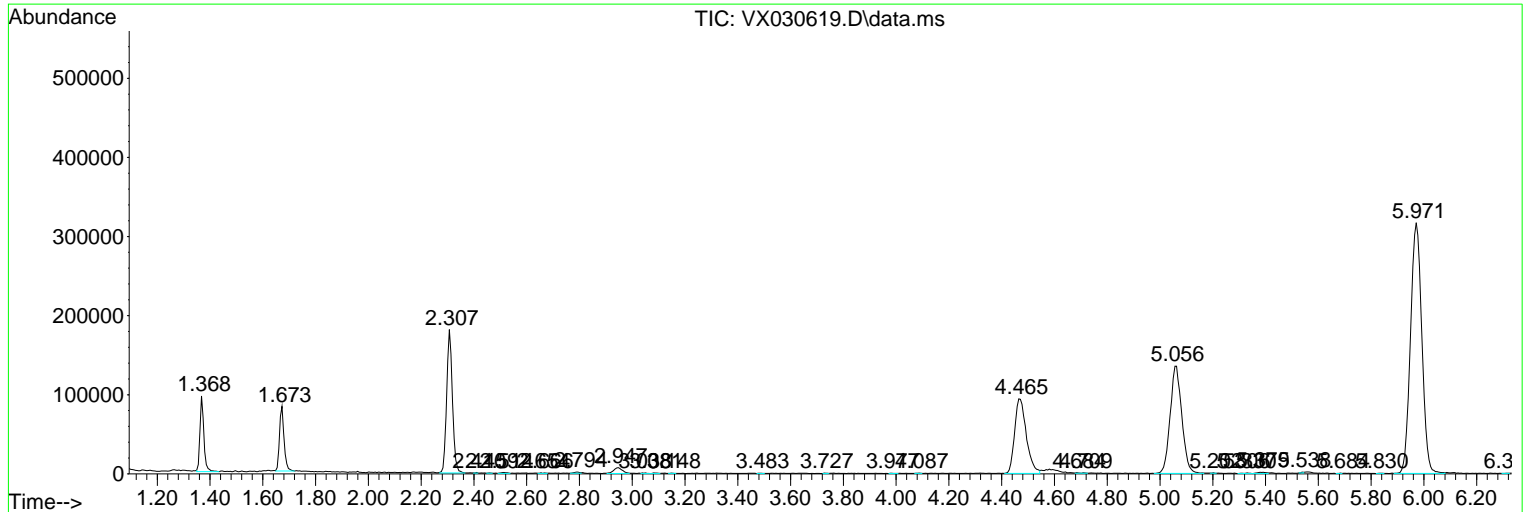
Sum of corrected areas: 7545060

Data Path : Z:\voasrv\HPCHEM1\MSVOA_X\Data\VX081522\
 Data File : VX030619.D
 Acq On : 15 Aug 2022 10:55
 Operator : JC/MD
 Sample : VX0815MBL01
 Misc : 5.00g/5mL/100uL/5.00mL/MSVOA_X/MEOH
 ALS Vial : 3 Sample Multiplier: 1

Instrument :
 MSVOA_X
 ClientSampleId :
 VBLK684

Quant Method : Z:\voasrv\HPCHEM1\MSVOA_X\Method\SFAMXML080422WMA.M
 Quant Title : VOC Analysis

TIC Library : C:\Database\NIST20.L
 TIC Integration Parameters: LSCINT.P



Data Path : Z:\voasrv\HPCHEM1\MSVOA_X\Data\VX081522\
Data File : VX030619.D
Acq On : 15 Aug 2022 10:55
Operator : JC/MD
Sample : VX0815MBL01
Misc : 5.00g/5mL/100uL/5.00mL/MSVOA_X/MEOH
ALS Vial : 3 Sample Multiplier: 1

Instrument :
MSVOA_X
ClientSampleId :
VBLK684

Quant Method : Z:\voasrv\HPCHEM1\MSVOA_X\Method\SFAMXML080422WMA.M
Quant Title : VOC Analysis

TIC Library : C:\Database\NIST20.L
TIC Integration Parameters: LSCINT.P

No Library Search Compounds Detected

Data Path : Z:\voasrv\HPCHEM1\MSVOA_X\Data\VX081522\
Data File : VX030619.D
Acq On : 15 Aug 2022 10:55
Operator : JC/MD
Sample : VX0815MBL01
Misc : 5.00g/5mL/100uL/5.00mL/MSVOA_X/MEOH
ALS Vial : 3 Sample Multiplier: 1

Instrument :
MSVOA_X
ClientSampleId :
VBLK684

Quant Method : Z:\voasrv\HPCHEM1\MSVOA_X\Method\SFAMXML080422WMA.M
Quant Title : VOC Analysis

TIC Library : C:\Database\NIST20.L
TIC Integration Parameters: LSCINT.P

TIC Top Hit name	RT	EstConc	Units	Response	--Internal Standard--			
					#	RT	Resp	Conc
