

Data Path : Z:\voasrv\HPCHEM1\MSVOA\_X\Data\VX081523\  
 Data File : VX036996.D  
 Acq On : 15 Aug 2023 18:32  
 Operator : JC/MD  
 Sample : 03932-02 10X  
 Misc : 5.30g/10mL/100uL/5.00mL/MSVOA\_X/MEOH  
 ALS Vial : 20 Sample Multiplier: 1

Instrument :  
 MSVOA\_X  
 ClientSampleId :  
 NEVINS-SB-01-Z20-22

Quant Time: Aug 16 05:35:23 2023  
 Quant Method : Z:\voasrv\HPCHEM1\MSVOA\_X\Method\82X072123W.M  
 Quant Title : SW846 8260  
 QLast Update : Fri Jul 21 12:14:12 2023  
 Response via : Initial Calibration

Compound	R.T.	QIon	Response	Conc	Units	Dev(Min)
Internal Standards						
1) Pentafluorobenzene	5.556	168	123748	50.000	ug/l	0.00
34) 1,4-Difluorobenzene	6.763	114	225336	50.000	ug/l	0.00
63) Chlorobenzene-d5	10.055	117	215004	50.000	ug/l	0.00
72) 1,4-Dichlorobenzene-d4	12.024	152	103584	50.000	ug/l	0.00
System Monitoring Compounds						
33) 1,2-Dichloroethane-d4	5.958	65	85003	46.423	ug/l	0.00
Spiked Amount	50.000	Range	78 - 117	Recovery	=	92.840%
35) Dibromofluoromethane	5.385	113	71398	46.098	ug/l	0.00
Spiked Amount	50.000	Range	75 - 124	Recovery	=	92.200%
50) Toluene-d8	8.647	98	270594	49.266	ug/l	0.00
Spiked Amount	50.000	Range	92 - 112	Recovery	=	98.540%
62) 4-Bromofluorobenzene	11.079	95	109558	52.870	ug/l	0.00
Spiked Amount	50.000	Range	83 - 123	Recovery	=	105.740%
Target Compounds						
						Qvalue
11) Tert butyl alcohol	2.977	59	233	0.538	ug/l #	78
16) Acetone	2.386	43	1143	1.504	ug/l	96
17) Carbon Disulfide	2.508	76	1217	0.318	ug/l #	87
18) Methyl Acetate	2.709	43	832	0.260	ug/l #	88
20) Methylene Chloride	2.788	84	1078	0.638	ug/l #	79
25) 2-Butanone	4.580	43	1691	1.372	ug/l #	51
26) 2,2-Dichloropropane	4.586	77	2193	0.801	ug/l #	54
31) Cyclohexane	5.464	56	634	0.250	ug/l	99
36) 1,1-Dichloropropene	5.550	75	10094	4.372	ug/l #	52
37) Ethyl Acetate	4.580	43	1691	0.647	ug/l #	6
38) Carbon Tetrachloride	5.550	117	12983	5.290	ug/l #	14
39) Methylcyclohexane	7.379	83	4752	1.655	ug/l #	86
40) Benzene	6.043	78	38703	5.762	ug/l	99
55) 1,1,2-Trichloroethane	9.098	97	1024	0.579	ug/l #	17
59) 2-Hexanone	9.384	43	1441	0.780	ug/l #	26
67) Ethyl Benzene	10.195	91	169367	19.562	ug/l	99
68) m/p-Xylenes	10.305	106	3209	0.993	ug/l	98
69) o-Xylene	10.640	106	7405	2.297	ug/l	91
73) Isopropylbenzene	10.963	105	23963	2.795	ug/l	98
75) 1,1,2,2-Tetrachloroethane	11.219	83	988	0.341	ug/l #	31
76) 1,2,3-Trichloropropane	11.079	75	56330	23.120	ug/l #	39
78) n-propylbenzene	11.305	91	14272	1.440	ug/l	99
79) 2-Chlorotoluene	11.396	91	3895	0.648	ug/l #	48
80) 1,3,5-Trimethylbenzene	11.451	105	30076	4.194	ug/l	98
81) trans-1,4-Dichloro-2-b...	11.079	75	56330	52.403	ug/l #	5
82) 4-Chlorotoluene	11.451	91	3833	0.560	ug/l #	46
83) tert-Butylbenzene	11.750	119	11677	1.657	ug/l #	50
84) 1,2,4-Trimethylbenzene	11.750	105	99056	13.811	ug/l	96
85) sec-Butylbenzene	11.750	105	99056	11.274	ug/l #	57
86) p-Isopropyltoluene	12.006	119	11786	1.630	ug/l	93
89) n-Butylbenzene	12.317	91	16992	2.626	ug/l #	2
90) Hexachloroethane	12.695	117	44364	30.269	ug/l #	17
92) 1,2-Dibromo-3-Chloropr...	12.914	75	159	0.236	ug/l #	9
95) Naphthalene	13.774	128	2564033	342.270	ug/l	99
96) 1,2,3-Trichlorobenzene	13.975	180	515	0.243	ug/l #	1

Data Path : Z:\voasrv\HPCHEM1\MSVOA\_X\Data\VX081523\  
Data File : VX036996.D  
Acq On : 15 Aug 2023 18:32  
Operator : JC/MD  
Sample : 03932-02 10X  
Misc : 5.30g/10mL/100uL/5.00mL/MSVOA\_X/MEOH  
ALS Vial : 20 Sample Multiplier: 1

Instrument :  
MSVOA\_X  
ClientSampleId :  
NEVINS-SB-01-Z20-22

Quant Time: Aug 16 05:35:23 2023  
Quant Method : Z:\voasrv\HPCHEM1\MSVOA\_X\Method\82X072123W.M  
Quant Title : SW846 8260  
QLast Update : Fri Jul 21 12:14:12 2023  
Response via : Initial Calibration

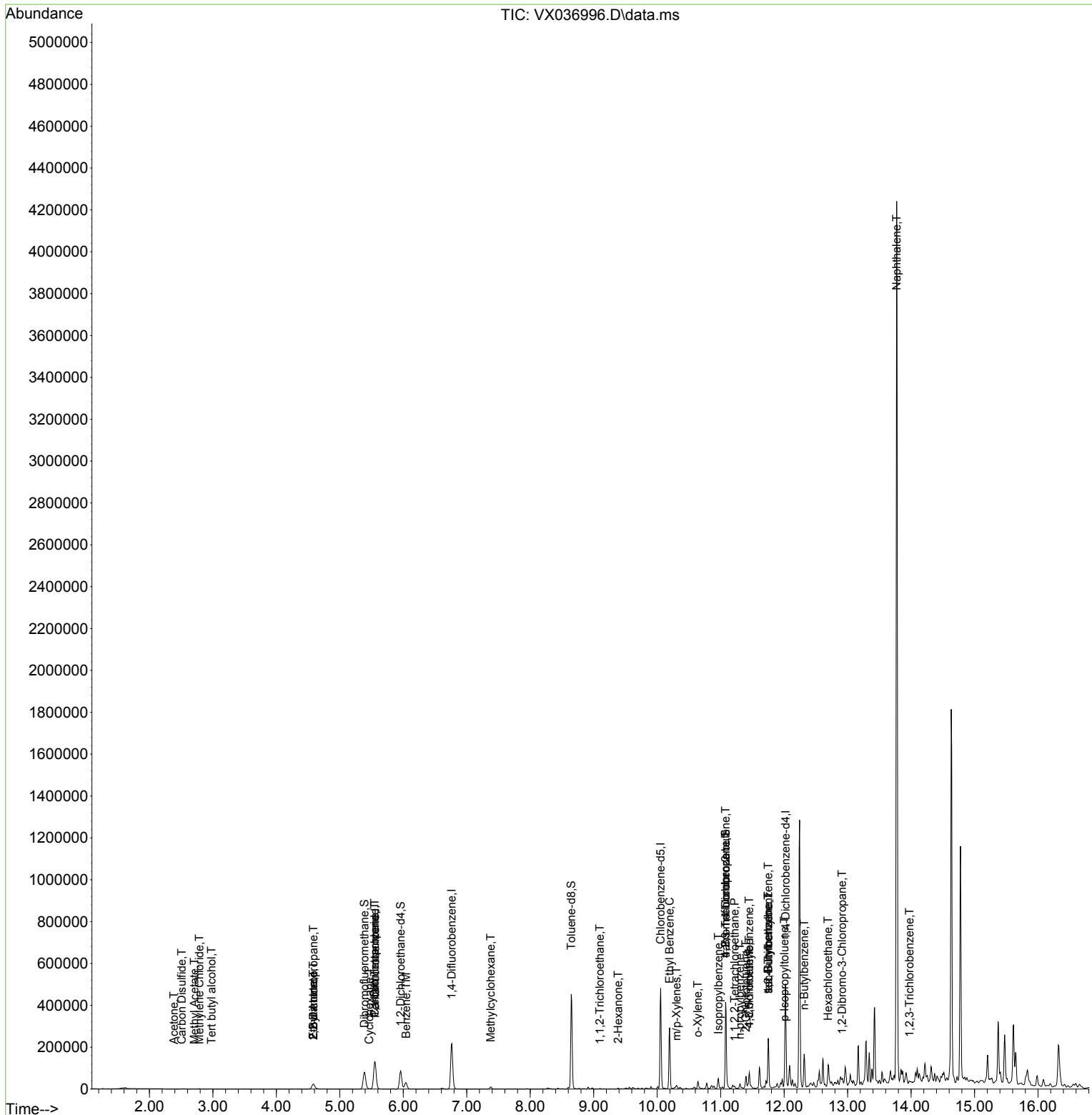
Compound	R.T.	QIon	Response	Conc	Units	Dev(Min)
----------	------	------	----------	------	-------	----------

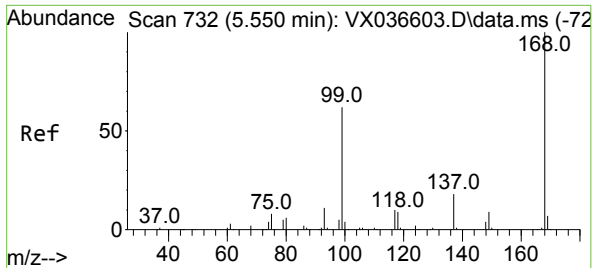
-----  
(#) = qualifier out of range (m) = manual integration (+) = signals summed

Data Path : Z:\voasrv\HPCHEM1\MSVOA\_X\Data\VX081523\  
 Data File : VX036996.D  
 Acq On : 15 Aug 2023 18:32  
 Operator : JC/MD  
 Sample : 03932-02 10X  
 Misc : 5.30g/10mL/100uL/5.00mL/MSVOA\_X/MEOH  
 ALS Vial : 20 Sample Multiplier: 1

Instrument :  
 MSVOA\_X  
 ClientSampleId :  
 NEVINS-SB-01-Z20-22

Quant Time: Aug 16 05:35:23 2023  
 Quant Method : Z:\voasrv\HPCHEM1\MSVOA\_X\Method\82X072123W.M  
 Quant Title : SW846 8260  
 QLast Update : Fri Jul 21 12:14:12 2023  
 Response via : Initial Calibration

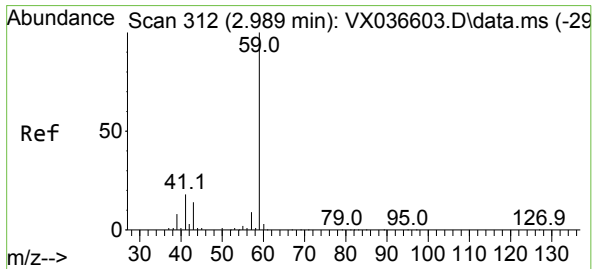
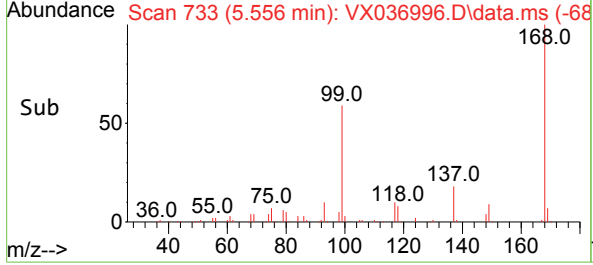
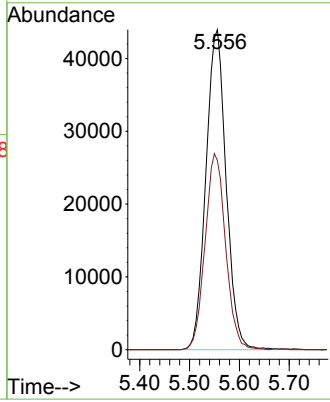
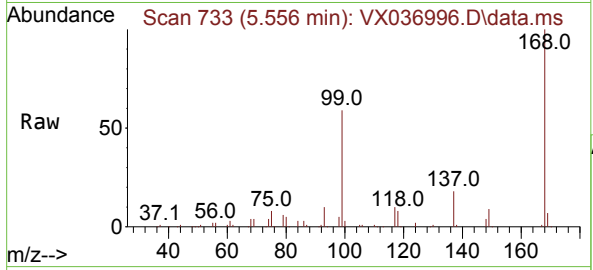




#1  
 Pentafluorobenzene  
 Concen: 50.000 ug/l  
 RT: 5.556 min Scan# 71  
 Delta R.T. 0.006 min  
 Lab File: VX036996.D  
 Acq: 15 Aug 2023 18:32

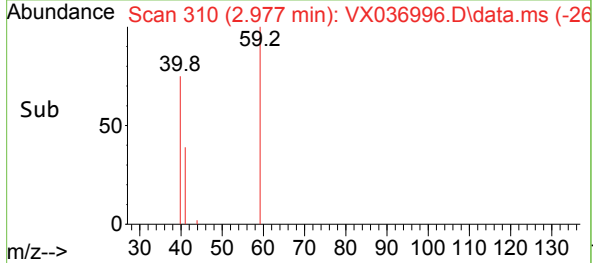
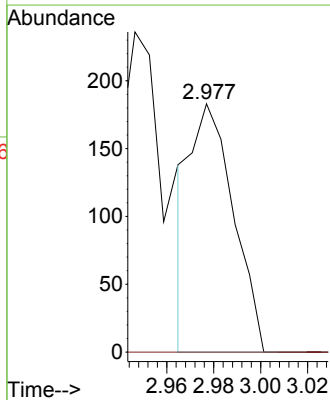
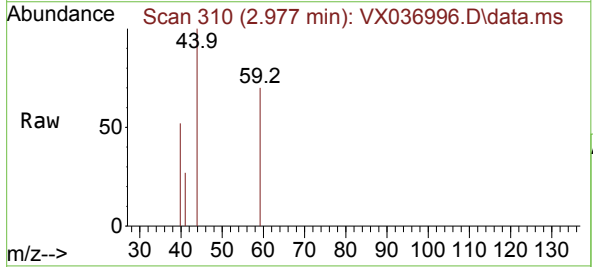
Instrument : MSVOA\_X  
 ClientSampleId : NEVINS-SB-01-Z20-22

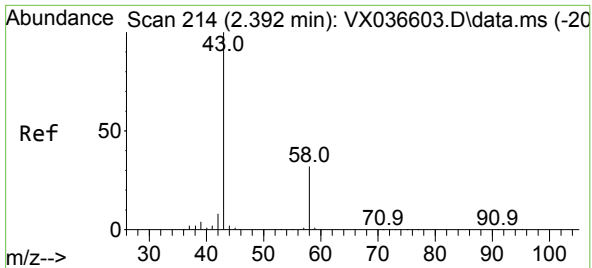
Tgt Ion:168 Resp: 123748  
 Ion Ratio Lower Upper  
 168 100  
 99 59.1 56.6 85.0



#11  
 Tert butyl alcohol  
 Concen: 0.538 ug/l  
 RT: 2.977 min Scan# 310  
 Delta R.T. -0.012 min  
 Lab File: VX036996.D  
 Acq: 15 Aug 2023 18:32

Tgt Ion: 59 Resp: 233  
 Ion Ratio Lower Upper  
 59 100  
 57 0.0 6.0 9.0#

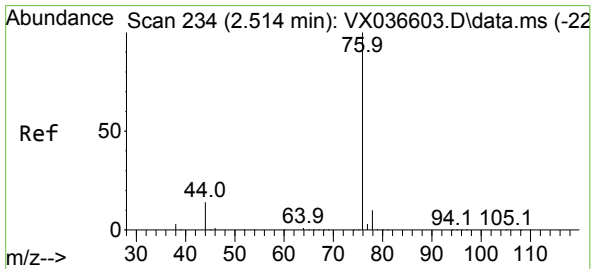
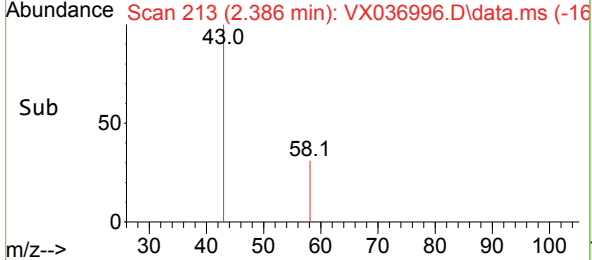
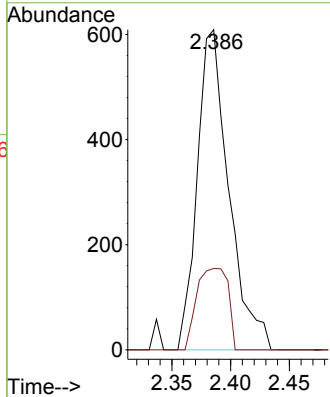
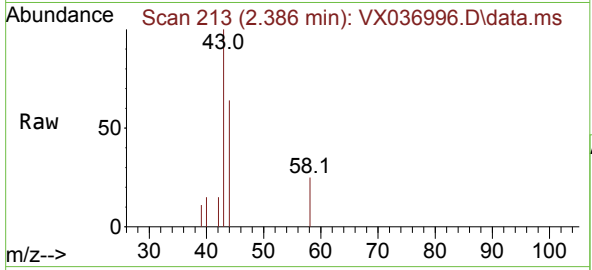




#16  
 Acetone  
 Concen: 1.504 ug/l  
 RT: 2.386 min Scan# 213  
 Delta R.T. -0.006 min  
 Lab File: VX036996.D  
 Acq: 15 Aug 2023 18:32

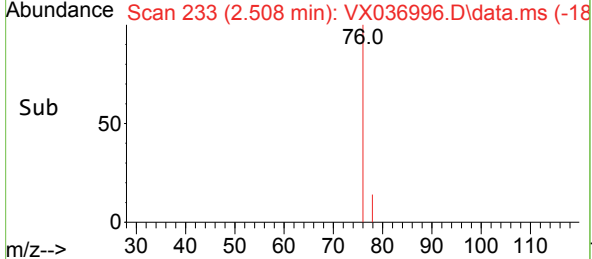
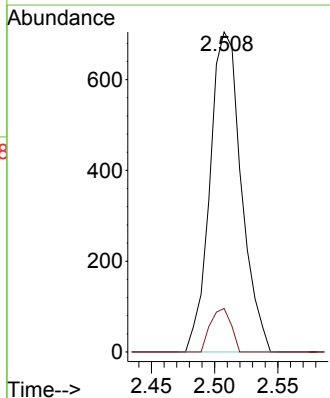
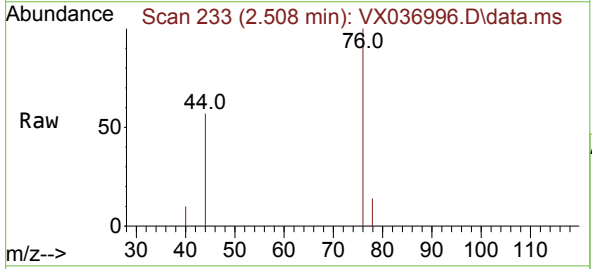
Instrument : MSVOA\_X  
 ClientSampleId : NEVINS-SB-01-Z20-22

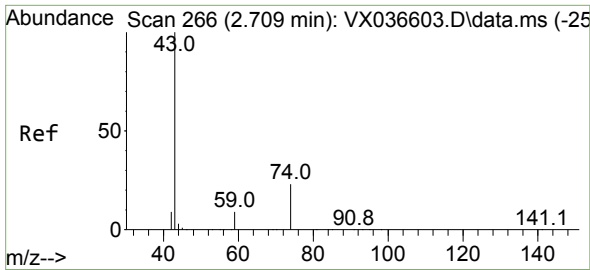
Tgt Ion	Resp	Lower	Upper
43	1143		
58	25.5	21.9	32.9



#17  
 Carbon Disulfide  
 Concen: 0.318 ug/l  
 RT: 2.508 min Scan# 233  
 Delta R.T. -0.006 min  
 Lab File: VX036996.D  
 Acq: 15 Aug 2023 18:32

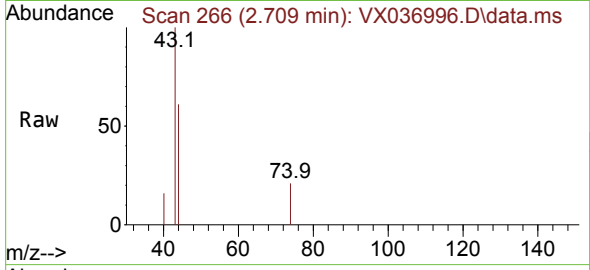
Tgt Ion	Resp	Lower	Upper
76	1217		
78	13.6	7.0	10.6



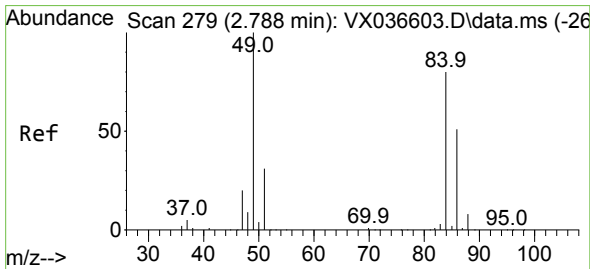
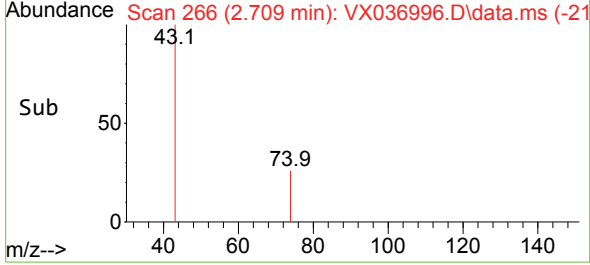
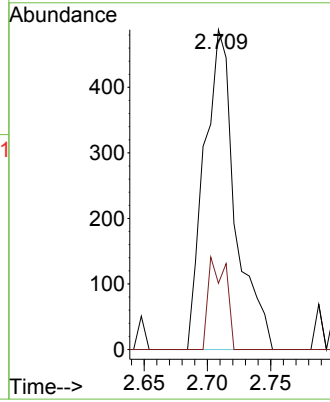


#18  
 Methyl Acetate  
 Concen: 0.260 ug/l  
 RT: 2.709 min Scan# 266  
 Delta R.T. -0.000 min  
 Lab File: VX036996.D  
 Acq: 15 Aug 2023 18:32

Instrument : MSVOA\_X  
 ClientSampleId : NEVINS-SB-01-Z20-22

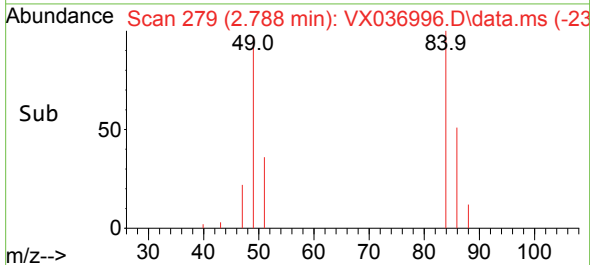
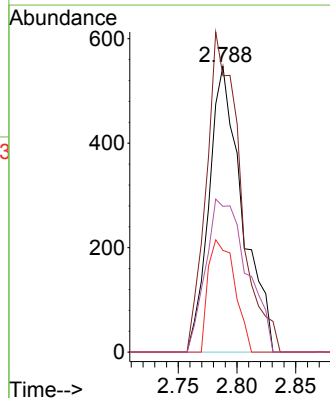
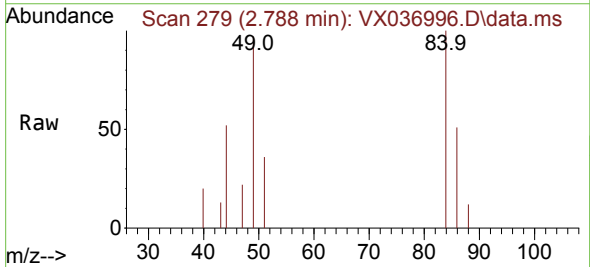


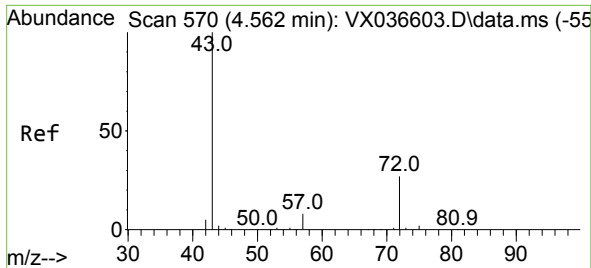
Tgt Ion: 43 Resp: 832  
 Ion Ratio Lower Upper  
 43 100  
 74 16.3 17.8 26.8#



#20  
 Methylene Chloride  
 Concen: 0.638 ug/l  
 RT: 2.788 min Scan# 279  
 Delta R.T. -0.000 min  
 Lab File: VX036996.D  
 Acq: 15 Aug 2023 18:32

Tgt Ion: 84 Resp: 1078  
 Ion Ratio Lower Upper  
 84 100  
 49 96.7 103.6 155.4#  
 51 35.6 33.8 50.6  
 86 51.0 49.4 74.0

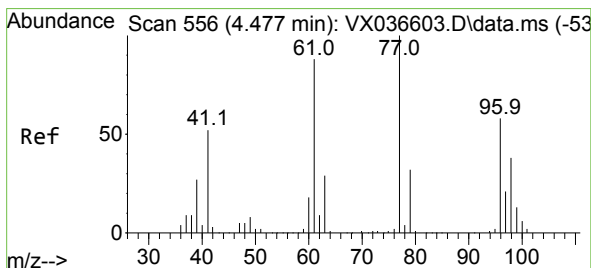
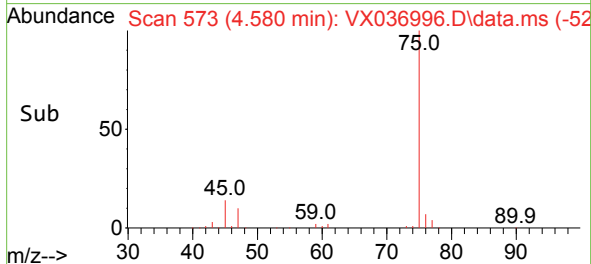
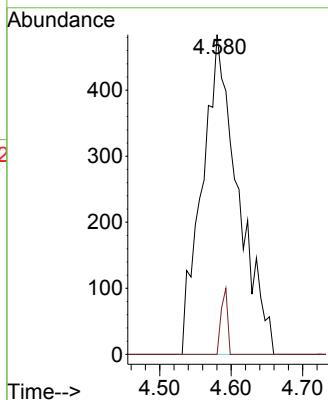
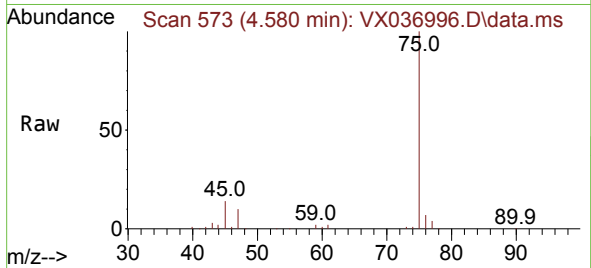




#25  
 2-Butanone  
 Concen: 1.372 ug/l  
 RT: 4.580 min Scan# 570  
 Delta R.T. 0.018 min  
 Lab File: VX036996.D  
 Acq: 15 Aug 2023 18:32

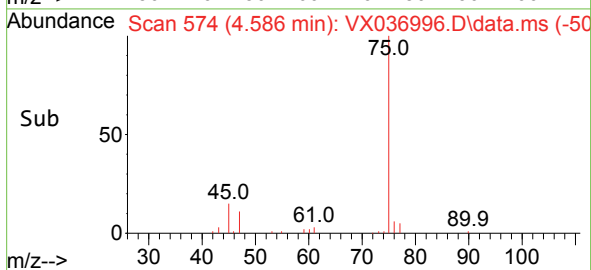
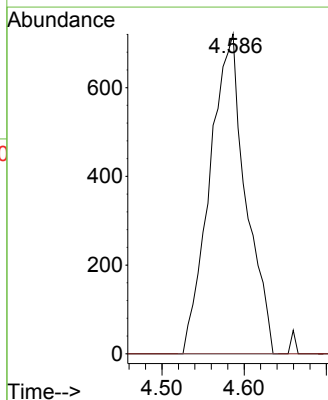
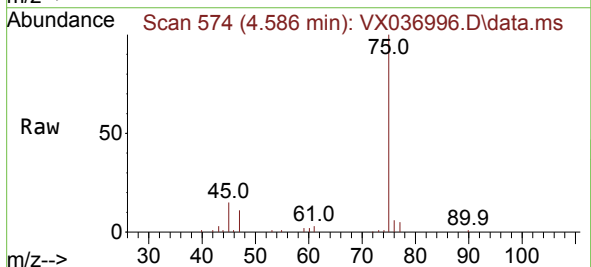
Instrument : MSVOA\_X  
 ClientSampleId : NEVINS-SB-01-Z20-22

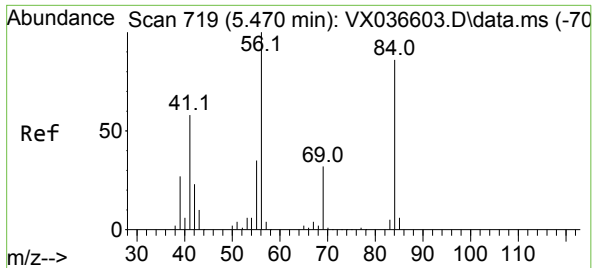
Tgt Ion: 43 Resp: 1691  
 Ion Ratio Lower Upper  
 43 100  
 72 0.0 19.4 29.2#



#26  
 2,2-Dichloropropane  
 Concen: 0.801 ug/l  
 RT: 4.586 min Scan# 574  
 Delta R.T. 0.110 min  
 Lab File: VX036996.D  
 Acq: 15 Aug 2023 18:32

Tgt Ion: 77 Resp: 2193  
 Ion Ratio Lower Upper  
 77 100  
 97 0.0 10.8 32.3#

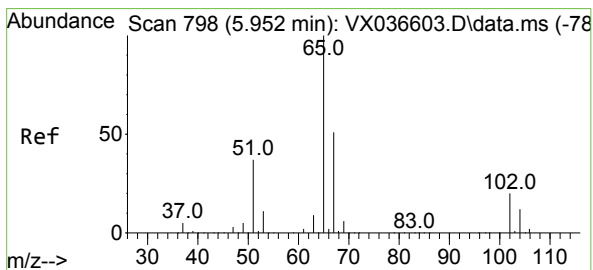
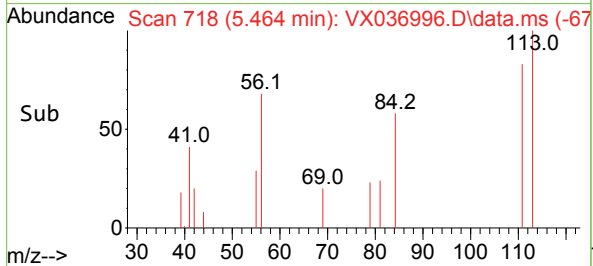
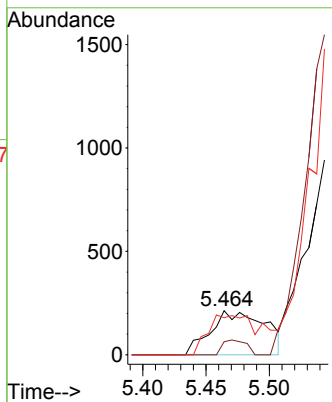
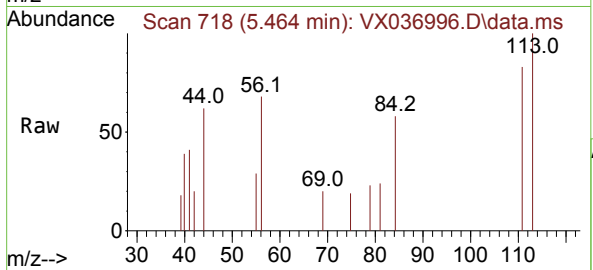




#31  
 Cyclohexane  
 Concen: 0.250 ug/l  
 RT: 5.464 min Scan# 719  
 Delta R.T. -0.006 min  
 Lab File: VX036996.D  
 Acq: 15 Aug 2023 18:32

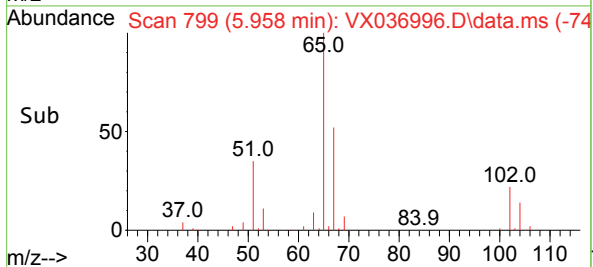
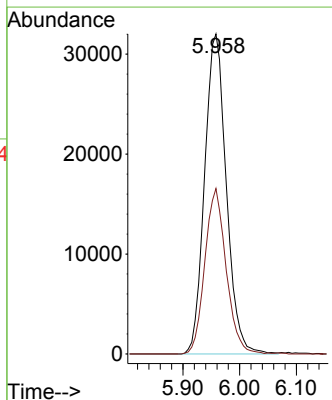
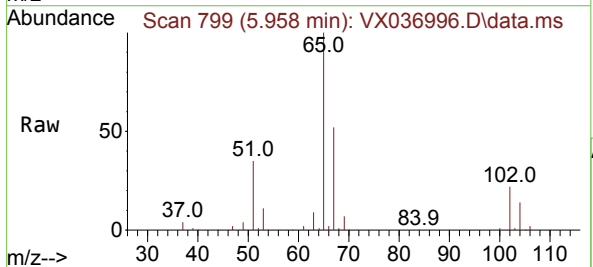
Instrument : MSVOA\_X  
 ClientSampleId : NEVINS-SB-01-Z20-22

Tgt Ion	Resp	Lower	Upper
56	100		
69	29.6	23.4	35.2
84	84.0	65.9	98.9

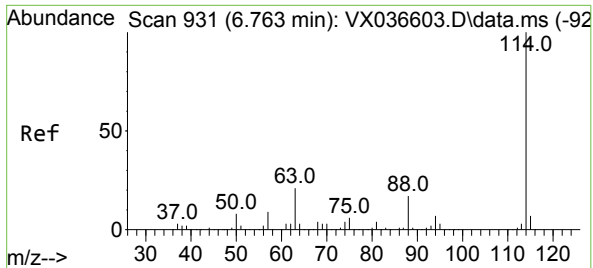


#33  
 1,2-Dichloroethane-d4  
 Concen: 46.423 ug/l  
 RT: 5.958 min Scan# 799  
 Delta R.T. 0.006 min  
 Lab File: VX036996.D  
 Acq: 15 Aug 2023 18:32

Tgt Ion	Resp	Lower	Upper
65	100		
67	50.7	0.0	100.2





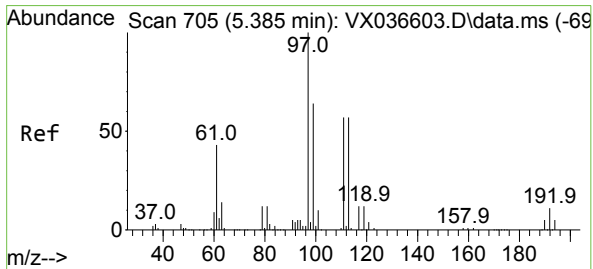
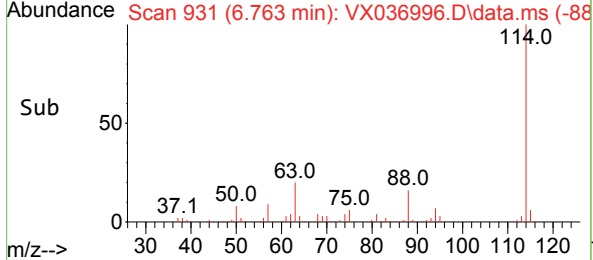
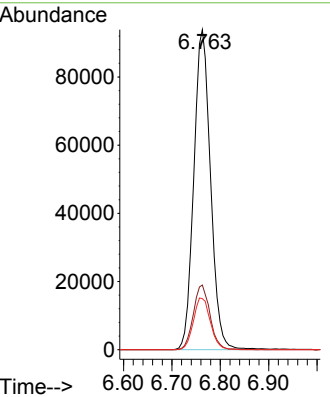
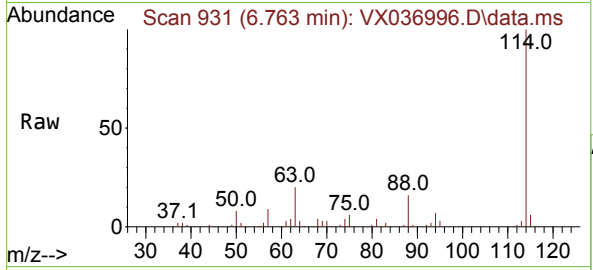


#34  
 1,4-Difluorobenzene  
 Concen: 50.000 ug/l  
 RT: 6.763 min Scan# 911  
 Delta R.T. -0.000 min  
 Lab File: VX036996.D  
 Acq: 15 Aug 2023 18:32

Instrument : MSVOA\_X  
 ClientSampleId : NEVINS-SB-01-Z20-22

Tgt Ion:114 Resp: 225336

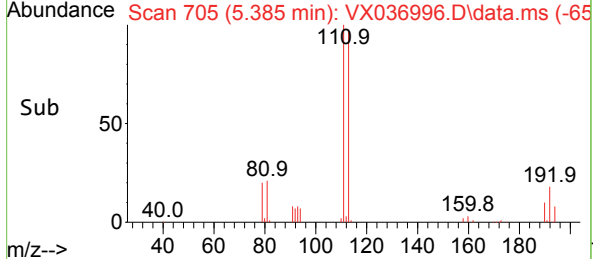
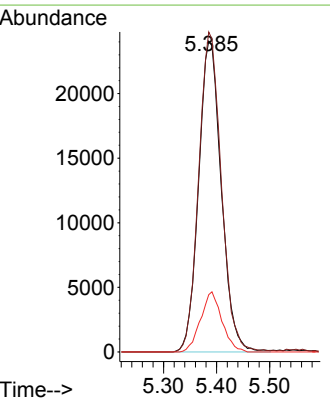
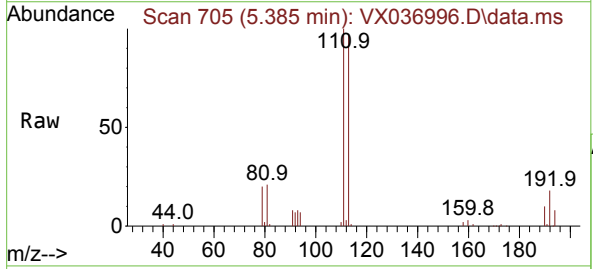
Ion	Ratio	Lower	Upper
114	100		
63	20.2	0.0	45.0
88	16.0	0.0	36.6

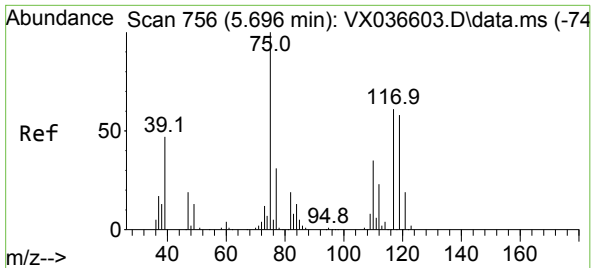


#35  
 Dibromofluoromethane  
 Concen: 46.098 ug/l  
 RT: 5.385 min Scan# 705  
 Delta R.T. -0.000 min  
 Lab File: VX036996.D  
 Acq: 15 Aug 2023 18:32

Tgt Ion:113 Resp: 71398

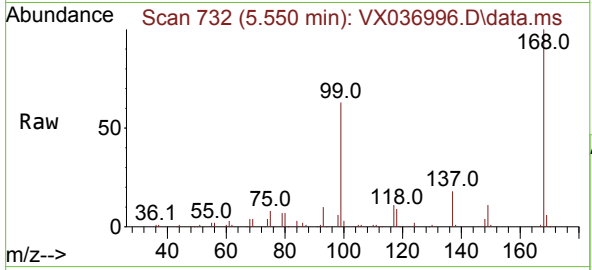
Ion	Ratio	Lower	Upper
113	100		
111	102.4	82.9	124.3
192	18.2	13.3	19.9





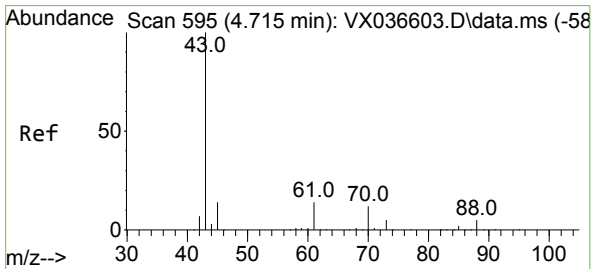
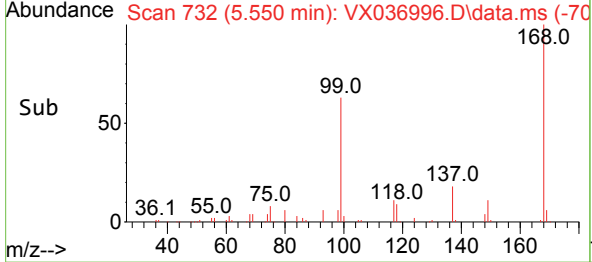
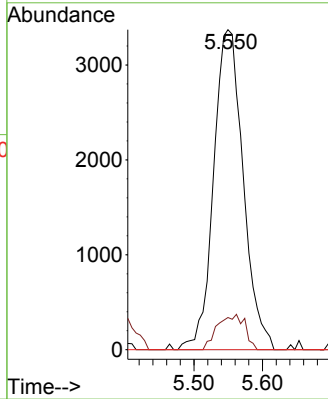
#36  
 1,1-Dichloropropene  
 Concen: 4.372 ug/l  
 RT: 5.550 min Scan# 71  
 Delta R.T. -0.146 min  
 Lab File: VX036996.D  
 Acq: 15 Aug 2023 18:32

Instrument : MSVOA\_X  
 ClientSampleId : NEVINS-SB-01-Z20-22



Tgt Ion: 75 Resp: 10094

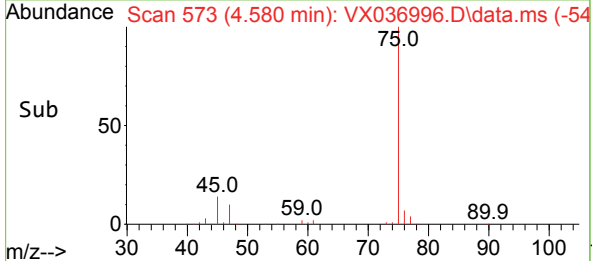
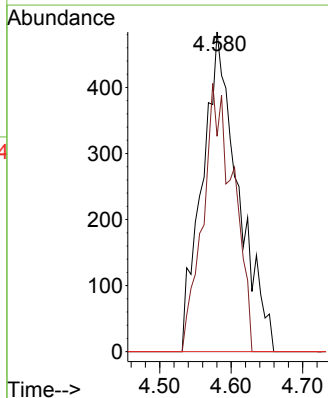
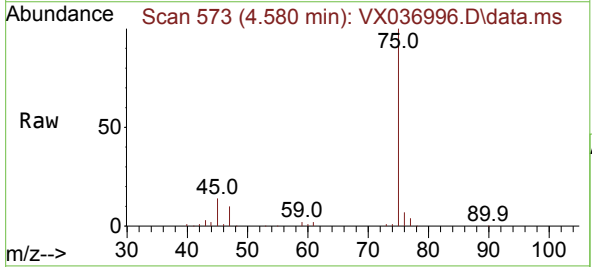
Ion	Ratio	Lower	Upper
75	100		
110	10.2	17.0	50.9#
77	0.0	24.7	37.1#

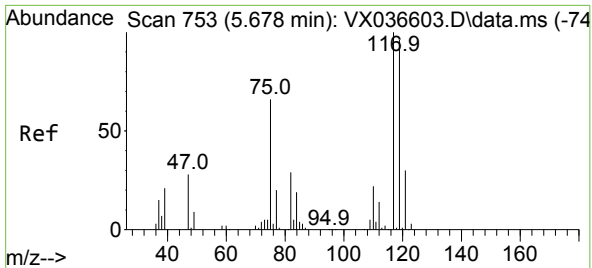


#37  
 Ethyl Acetate  
 Concen: 0.647 ug/l  
 RT: 4.580 min Scan# 573  
 Delta R.T. -0.134 min  
 Lab File: VX036996.D  
 Acq: 15 Aug 2023 18:32

Tgt Ion: 43 Resp: 1691

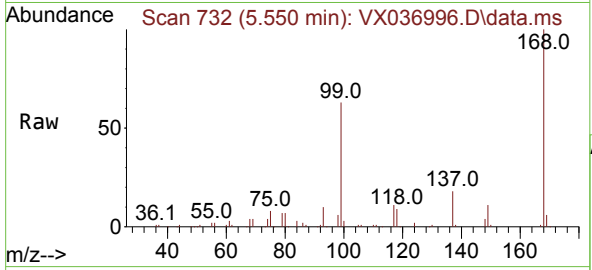
Ion	Ratio	Lower	Upper
43	100		
61	71.6	10.6	16.0#
70	0.0	8.3	12.5#



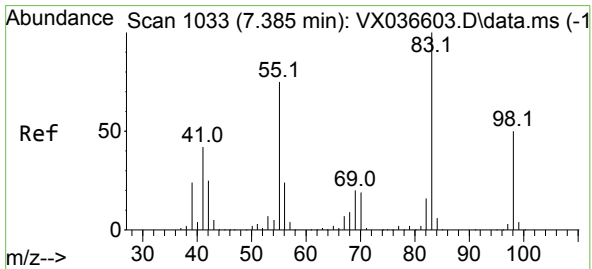
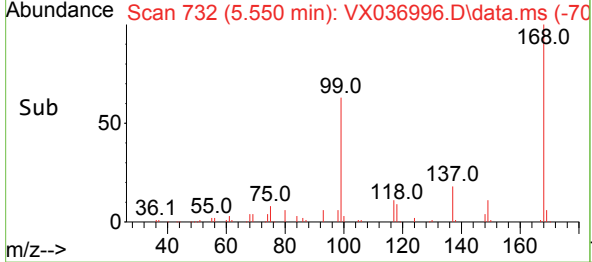
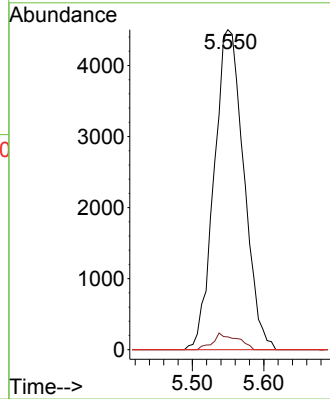


#38  
 Carbon Tetrachloride  
 Concen: 5.290 ug/l  
 RT: 5.550 min Scan# 71  
 Delta R.T. -0.128 min  
 Lab File: VX036996.D  
 Acq: 15 Aug 2023 18:32

Instrument : MSVOA\_X  
 ClientSampleId : NEVINS-SB-01-Z20-22

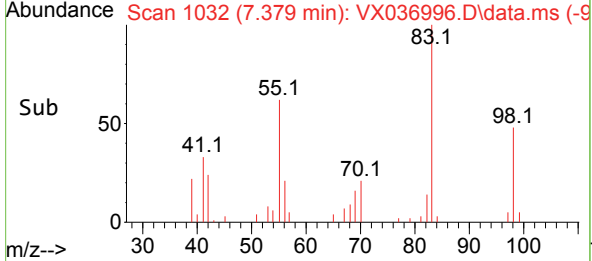
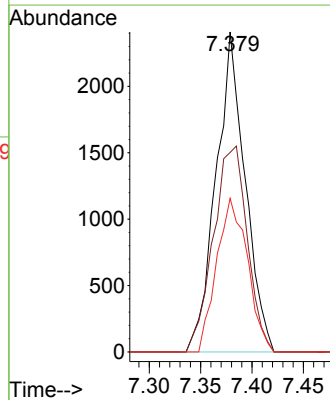
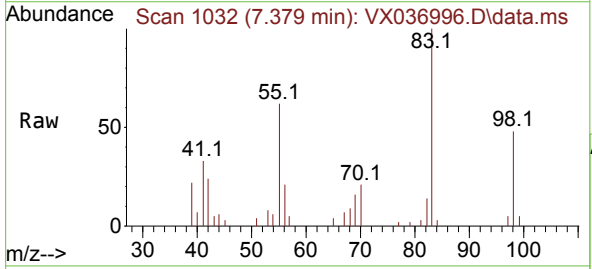


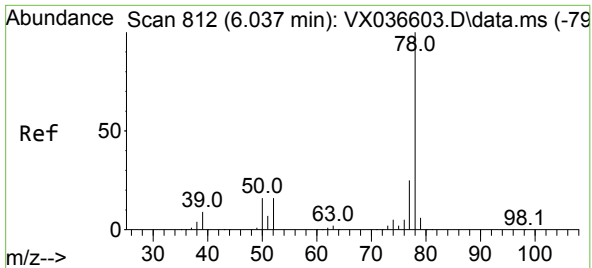
Tgt Ion:117 Resp: 12983  
 Ion Ratio Lower Upper  
 117 100  
 119 4.0 78.2 117.2#  
 121 0.0 24.4 36.6#



#39  
 Methylcyclohexane  
 Concen: 1.655 ug/l  
 RT: 7.379 min Scan# 1032  
 Delta R.T. -0.006 min  
 Lab File: VX036996.D  
 Acq: 15 Aug 2023 18:32

Tgt Ion: 83 Resp: 4752  
 Ion Ratio Lower Upper  
 83 100  
 55 62.3 64.6 97.0#  
 98 48.0 36.7 55.1

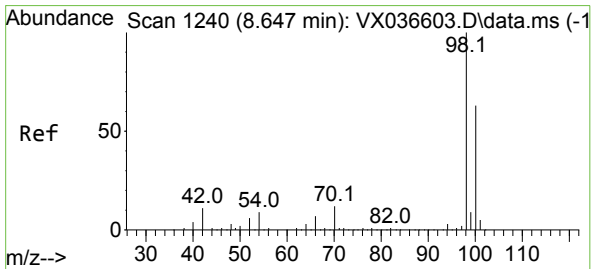
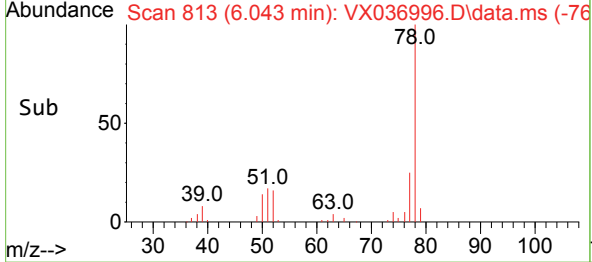
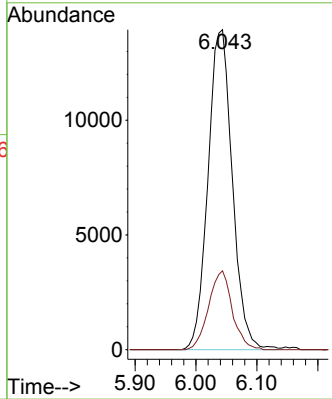
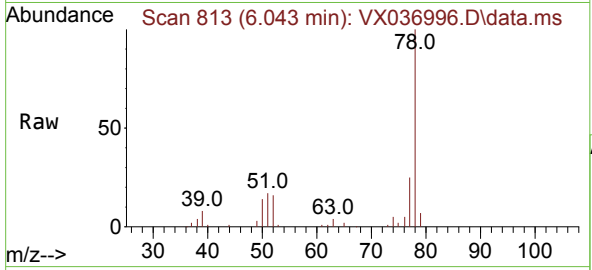




#40  
Benzene  
Concen: 5.762 ug/l  
RT: 6.043 min Scan# 812  
Delta R.T. 0.006 min  
Lab File: VX036996.D  
Acq: 15 Aug 2023 18:32

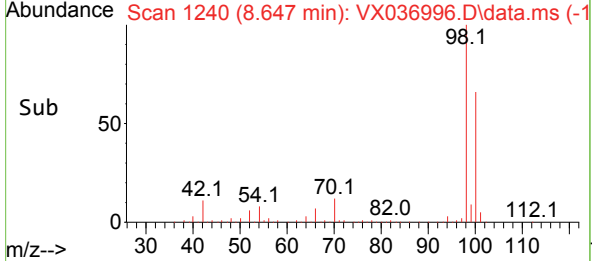
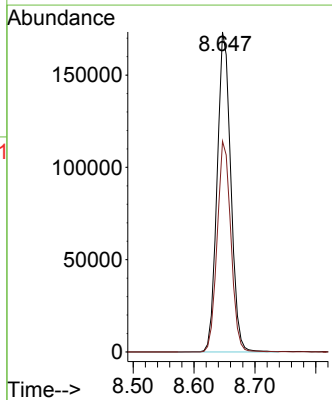
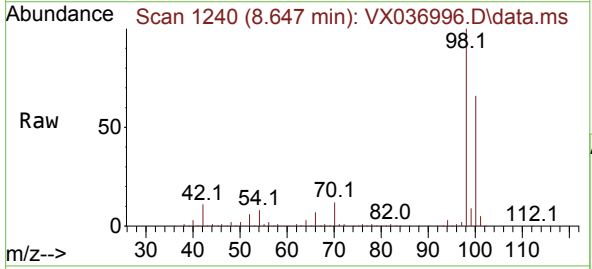
Instrument : MSVOA\_X  
ClientSampleId : NEVINS-SB-01-Z20-22

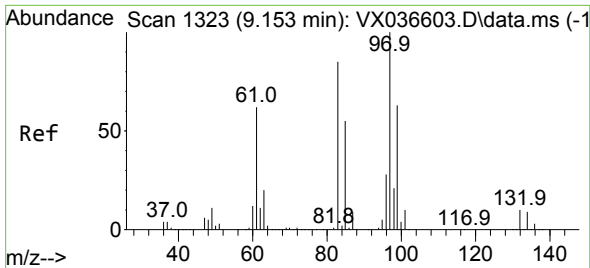
Tgt Ion: 78 Resp: 38703  
Ion Ratio Lower Upper  
78 100  
77 24.7 19.3 28.9



#50  
Toluene-d8  
Concen: 49.266 ug/l  
RT: 8.647 min Scan# 1240  
Delta R.T. -0.000 min  
Lab File: VX036996.D  
Acq: 15 Aug 2023 18:32

Tgt Ion: 98 Resp: 270594  
Ion Ratio Lower Upper  
98 100  
100 66.1 53.1 79.7

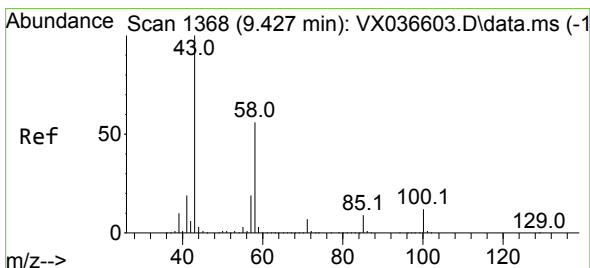
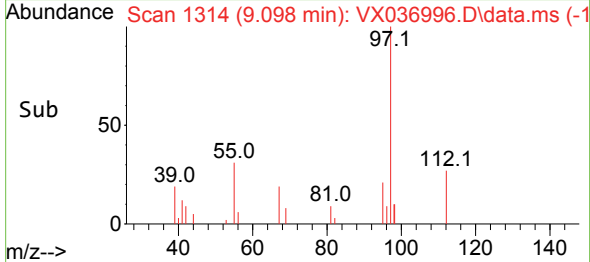
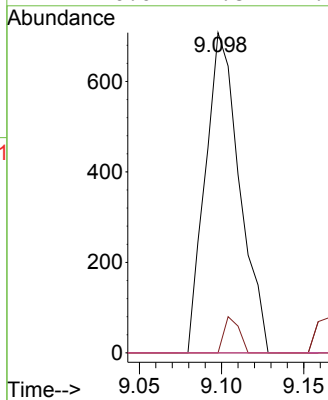
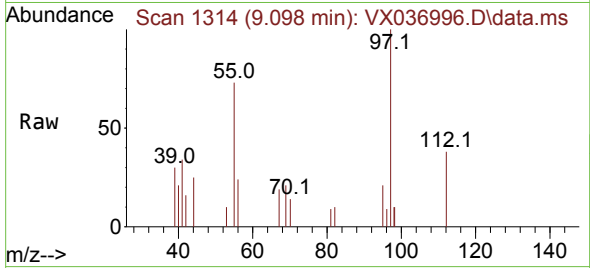




#55  
 1,1,2-Trichloroethane  
 Concen: 0.579 ug/l  
 RT: 9.098 min Scan# 111  
 Delta R.T. -0.055 min  
 Lab File: VX036996.D  
 Acq: 15 Aug 2023 18:32

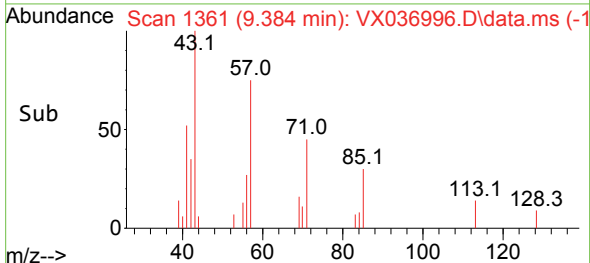
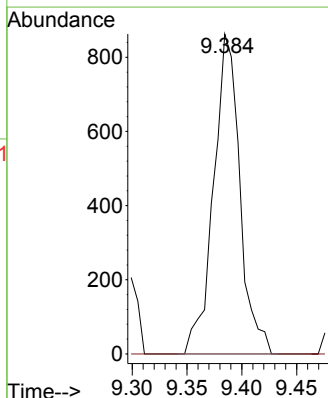
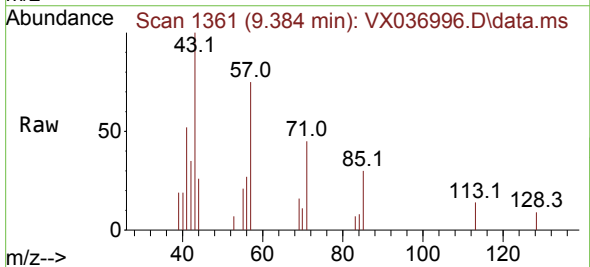
Instrument : MSVOA\_X  
 ClientSampleId : NEVINS-SB-01-Z20-22

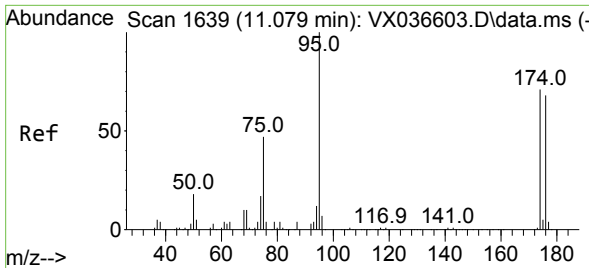
Tgt Ion	Resp	Lower	Upper
97	1024		
97	100		
83	0.0	65.8	98.8#
85	0.0	41.6	62.4#
99	0.0	47.8	71.8#



#59  
 2-Hexanone  
 Concen: 0.780 ug/l  
 RT: 9.384 min Scan# 1361  
 Delta R.T. -0.043 min  
 Lab File: VX036996.D  
 Acq: 15 Aug 2023 18:32

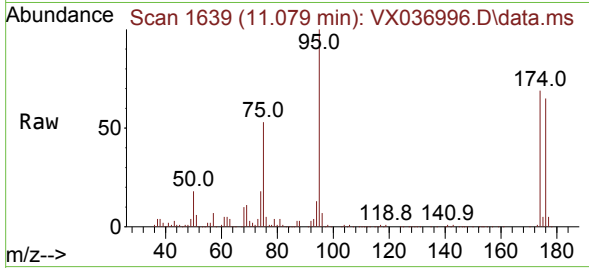
Tgt Ion	Resp	Lower	Upper
43	1441		
43	100		
58	0.0	26.2	78.5#



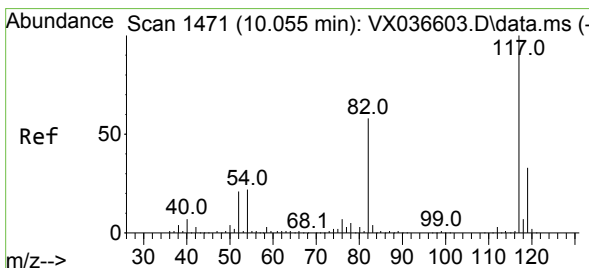
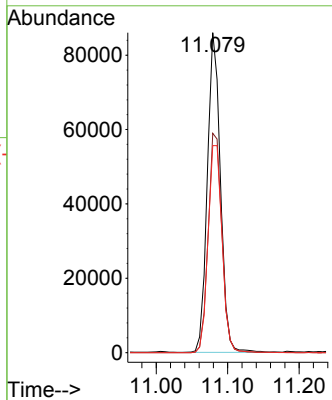
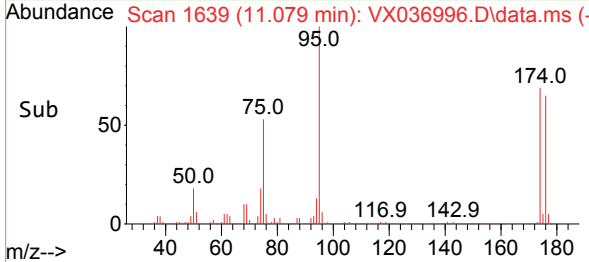


#62  
 4-Bromofluorobenzene  
 Concen: 52.870 ug/l  
 RT: 11.079 min Scan# 1639  
 Delta R.T. -0.000 min  
 Lab File: VX036996.D  
 Acq: 15 Aug 2023 18:32

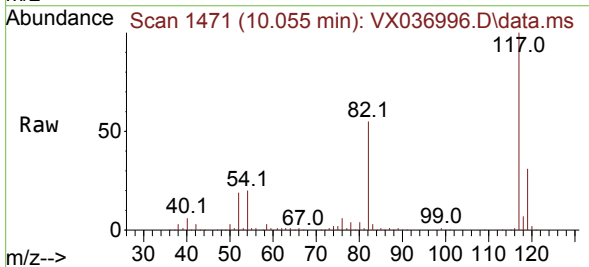
Instrument : MSVOA\_X  
 ClientSampleId : NEVINS-SB-01-Z20-22



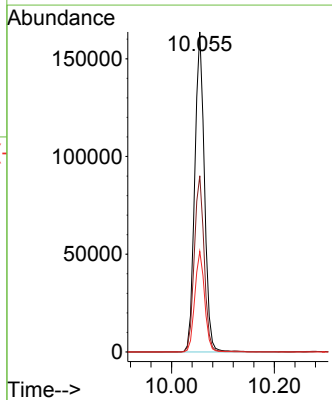
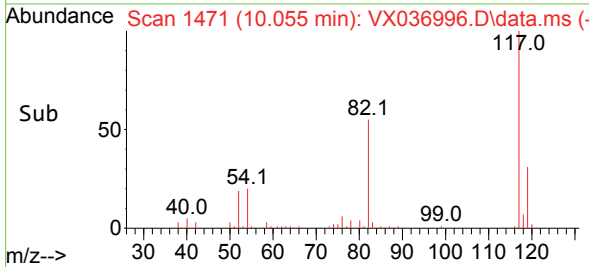
Tgt Ion: 95 Resp: 109558  
 Ion Ratio Lower Upper  
 95 100  
 174 71.5 0.0 135.6  
 176 69.6 0.0 131.0

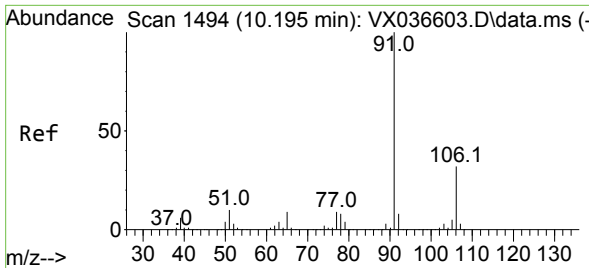


#63  
 Chlorobenzene-d5  
 Concen: 50.000 ug/l  
 RT: 10.055 min Scan# 1471  
 Delta R.T. -0.000 min  
 Lab File: VX036996.D  
 Acq: 15 Aug 2023 18:32



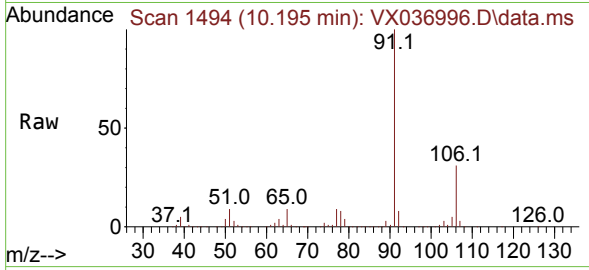
Tgt Ion: 117 Resp: 215004  
 Ion Ratio Lower Upper  
 117 100  
 82 55.0 46.2 69.4  
 119 31.4 25.5 38.3



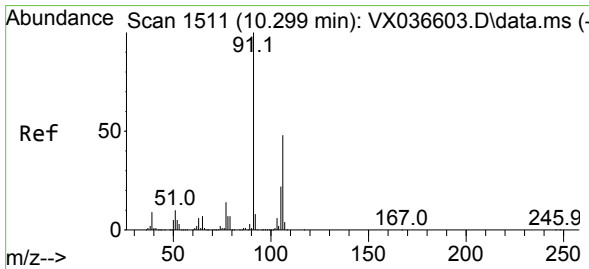
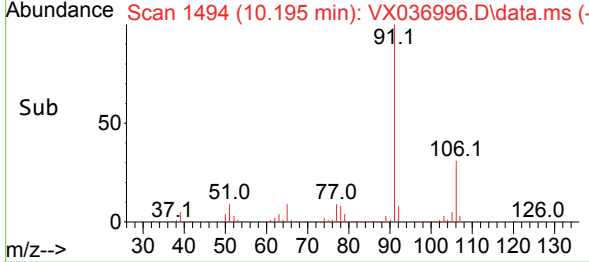
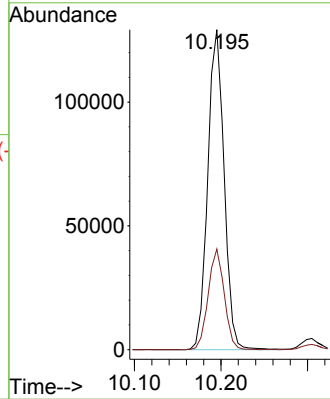


#67  
 Ethyl Benzene  
 Concen: 19.562 ug/l  
 RT: 10.195 min Scan# 1494  
 Delta R.T. -0.000 min  
 Lab File: VX036996.D  
 Acq: 15 Aug 2023 18:32

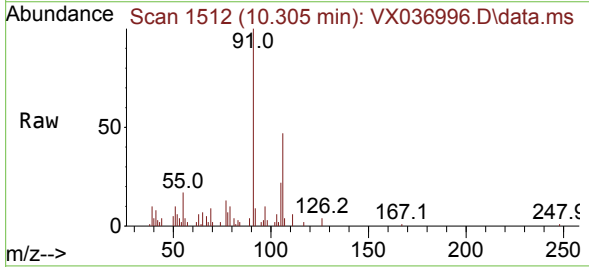
Instrument : MSVOA\_X  
 ClientSampleId : NEVINS-SB-01-Z20-22



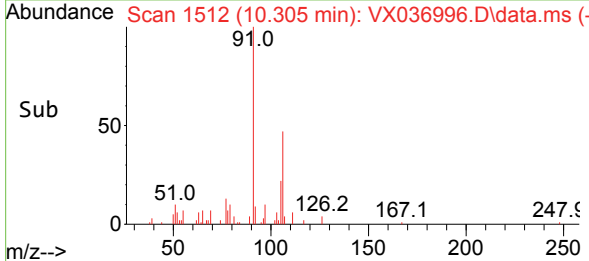
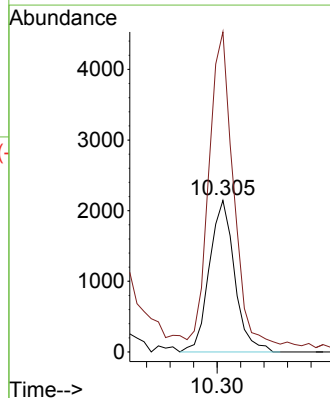
Tgt Ion: 91 Resp: 169367  
 Ion Ratio Lower Upper  
 91 100  
 106 31.4 24.9 37.3

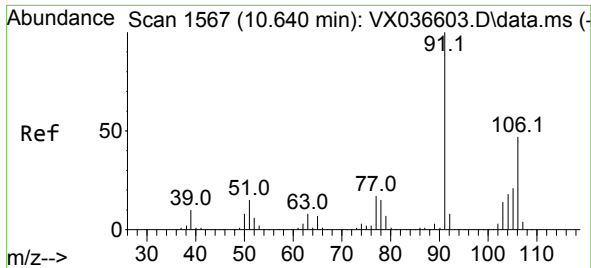


#68  
 m/p-Xylenes  
 Concen: 0.993 ug/l  
 RT: 10.305 min Scan# 1512  
 Delta R.T. 0.006 min  
 Lab File: VX036996.D  
 Acq: 15 Aug 2023 18:32



Tgt Ion: 106 Resp: 3209  
 Ion Ratio Lower Upper  
 106 100  
 91 209.5 165.5 248.3

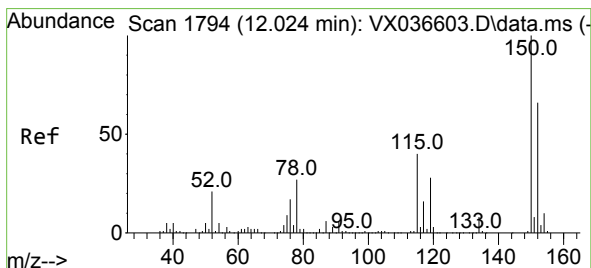
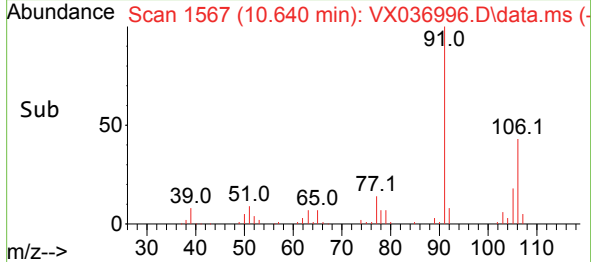
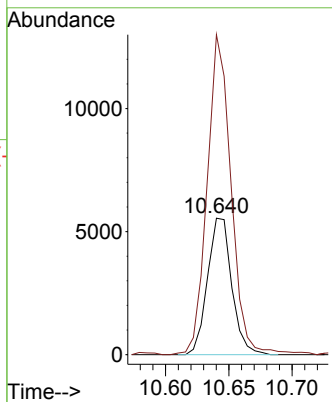
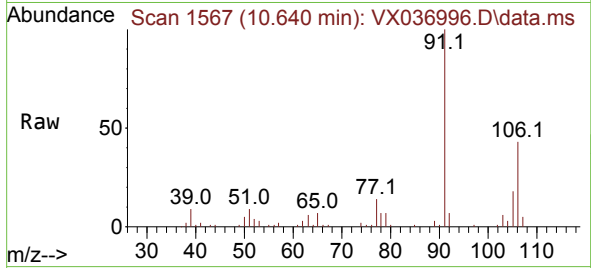




#69  
 o-Xylene  
 Concen: 2.297 ug/l  
 RT: 10.640 min Scan# 11  
 Delta R.T. -0.000 min  
 Lab File: VX036996.D  
 Acq: 15 Aug 2023 18:32

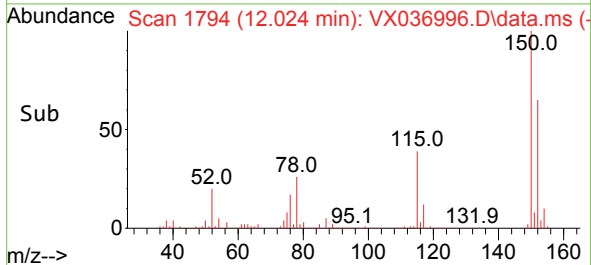
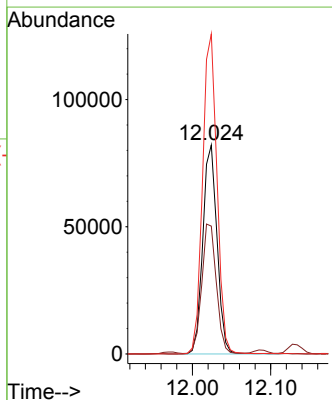
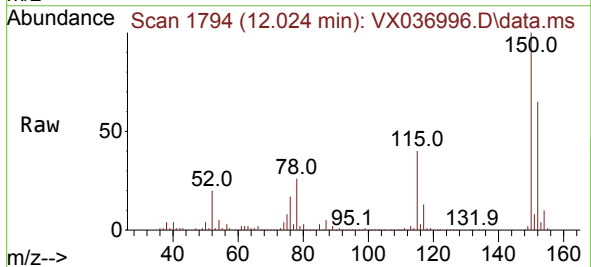
Instrument : MSVOA\_X  
 ClientSampleId : NEVINS-SB-01-Z20-22

Tgt Ion:106 Resp: 7405  
 Ion Ratio Lower Upper  
 106 100  
 91 231.9 108.9 326.8

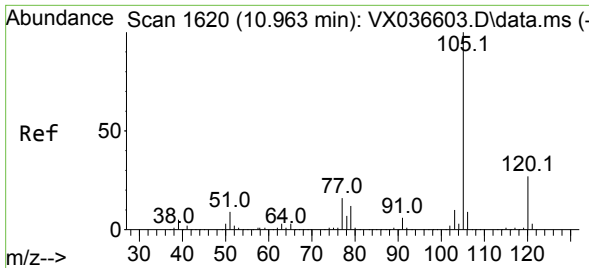


#72  
 1,4-Dichlorobenzene-d4  
 Concen: 50.000 ug/l  
 RT: 12.024 min Scan# 1794  
 Delta R.T. -0.000 min  
 Lab File: VX036996.D  
 Acq: 15 Aug 2023 18:32

Tgt Ion:152 Resp: 103584  
 Ion Ratio Lower Upper  
 152 100  
 115 63.1 43.3 129.9  
 150 154.8 0.0 345.0

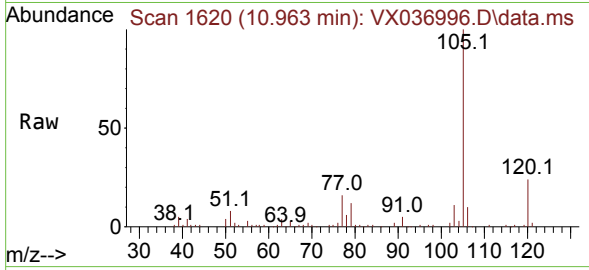




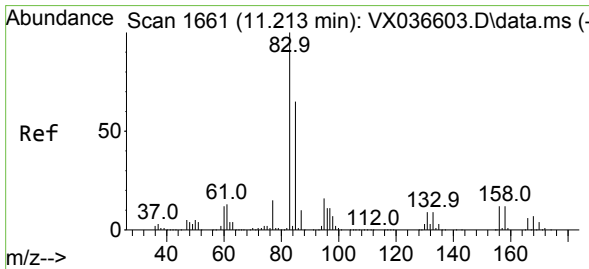
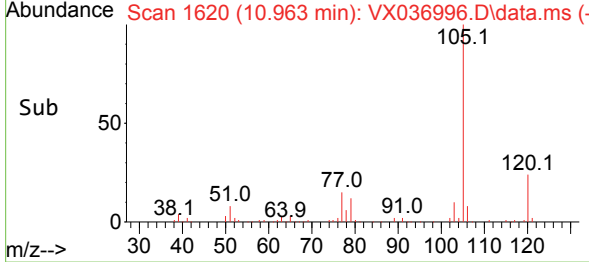
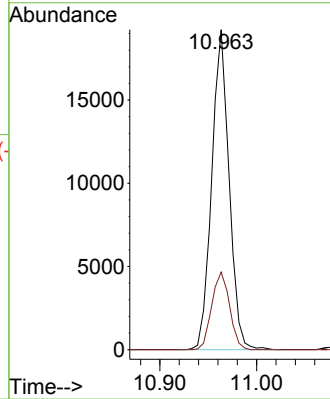


#73  
 Isopropylbenzene  
 Concen: 2.795 ug/l  
 RT: 10.963 min Scan# 1620  
 Delta R.T. -0.000 min  
 Lab File: VX036996.D  
 Acq: 15 Aug 2023 18:32

Instrument : MSVOA\_X  
 ClientSampleId : NEVINS-SB-01-Z20-22

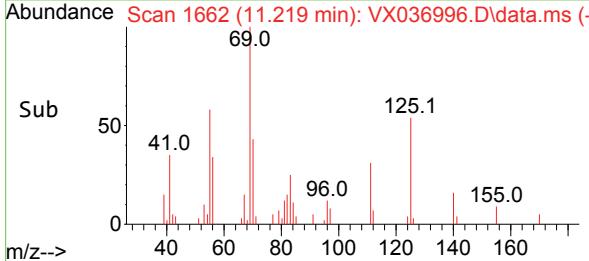
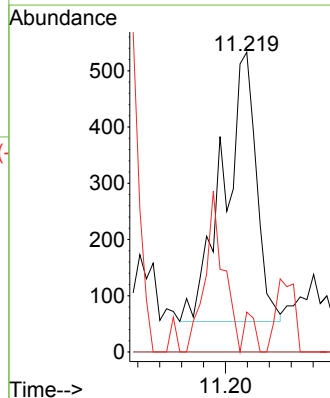
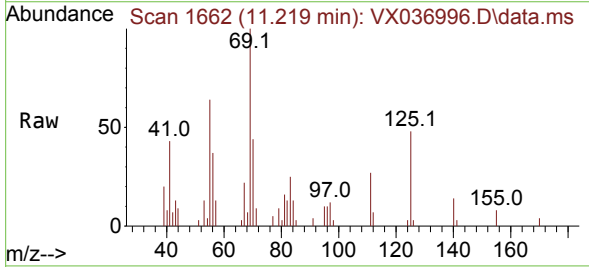


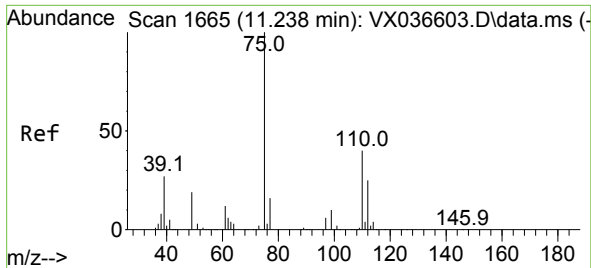
Tgt Ion: 105 Resp: 23963  
 Ion Ratio Lower Upper  
 105 100  
 120 24.9 12.9 38.6



#75  
 1,1,2,2-Tetrachloroethane  
 Concen: 0.341 ug/l  
 RT: 11.219 min Scan# 1662  
 Delta R.T. 0.006 min  
 Lab File: VX036996.D  
 Acq: 15 Aug 2023 18:32

Tgt Ion: 83 Resp: 988  
 Ion Ratio Lower Upper  
 83 100  
 131 0.0 5.3 15.8#  
 85 4.9 32.0 96.2#

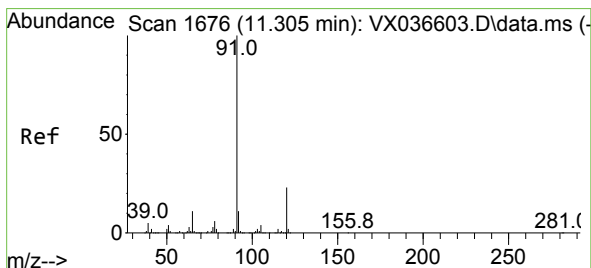
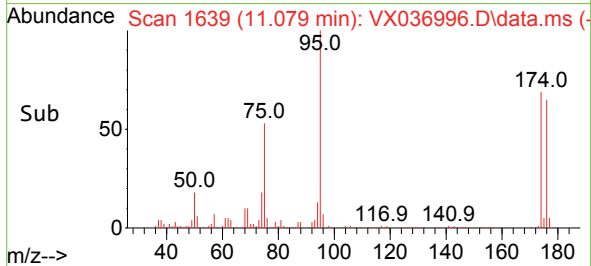
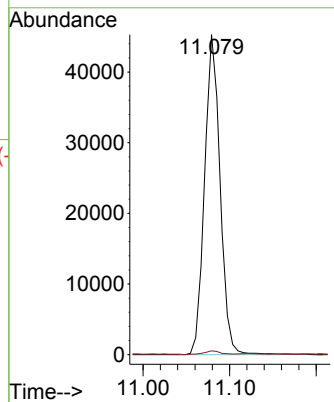
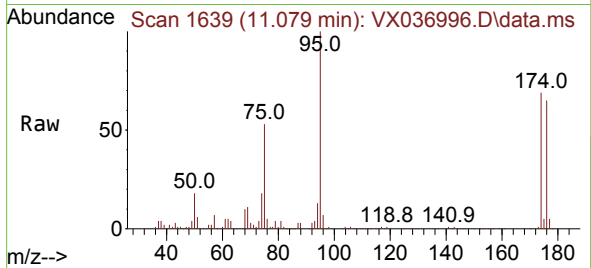




#76  
 1,2,3-Trichloropropane  
 Concen: 23.120 ug/l  
 RT: 11.079 min Scan# 1639  
 Delta R.T. -0.159 min  
 Lab File: VX036996.D  
 Acq: 15 Aug 2023 18:32

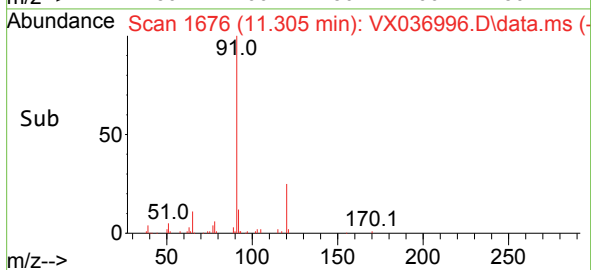
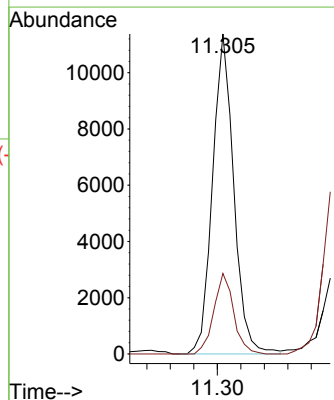
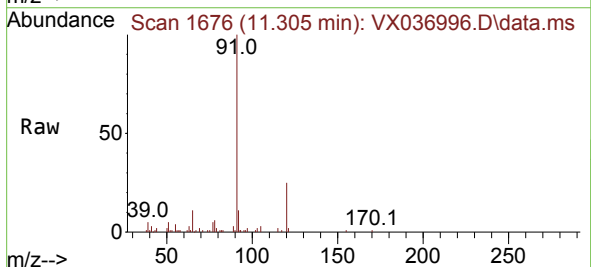
Instrument : MSVOA\_X  
 ClientSampleId : NEVINS-SB-01-Z20-22

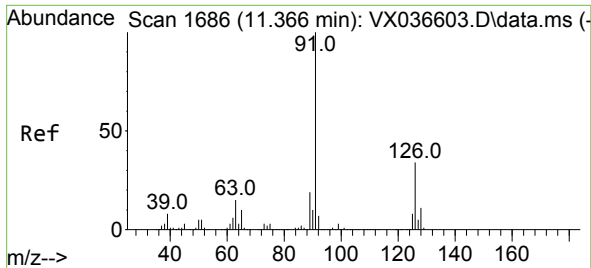
Tgt Ion: 75 Resp: 56330  
 Ion Ratio Lower Upper  
 75 100  
 77 1.4 19.1 57.5#



#78  
 n-propylbenzene  
 Concen: 1.440 ug/l  
 RT: 11.305 min Scan# 1676  
 Delta R.T. -0.000 min  
 Lab File: VX036996.D  
 Acq: 15 Aug 2023 18:32

Tgt Ion: 91 Resp: 14272  
 Ion Ratio Lower Upper  
 91 100  
 120 23.5 11.5 34.4

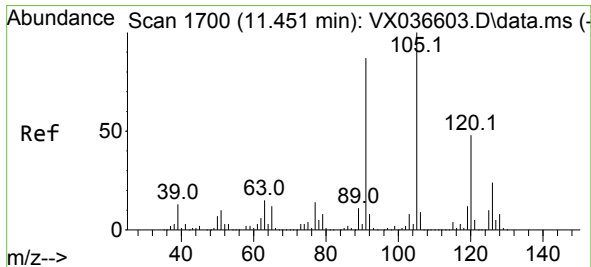
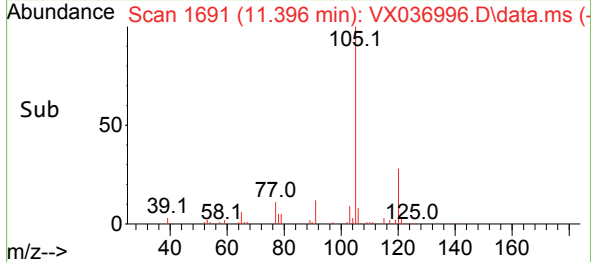
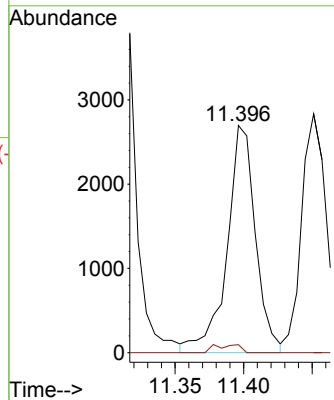
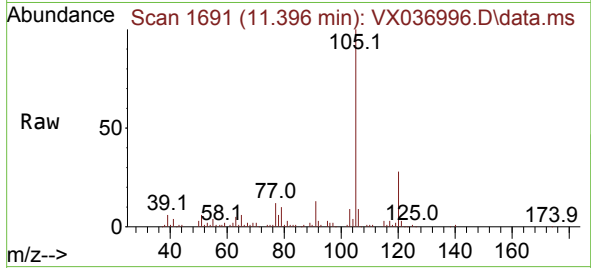




#79  
 2-Chlorotoluene  
 Concen: 0.648 ug/l  
 RT: 11.396 min Scan# 11396  
 Delta R.T. 0.030 min  
 Lab File: VX036996.D  
 Acq: 15 Aug 2023 18:32

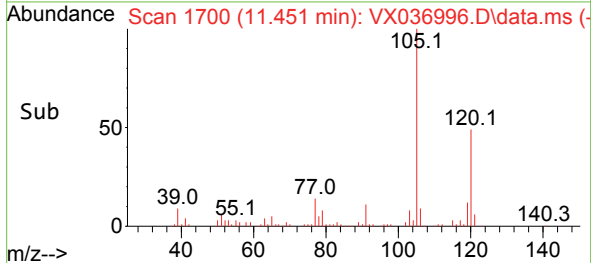
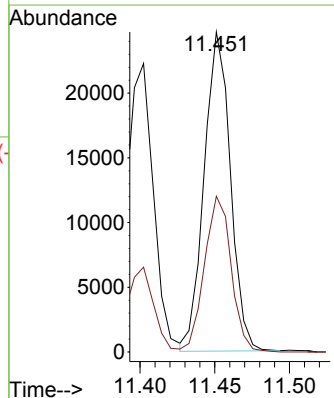
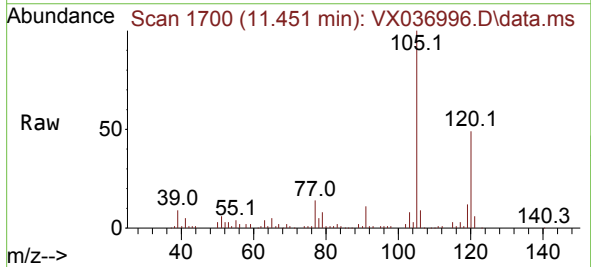
Instrument : MSVOA\_X  
 ClientSampleId : NEVINS-SB-01-Z20-22

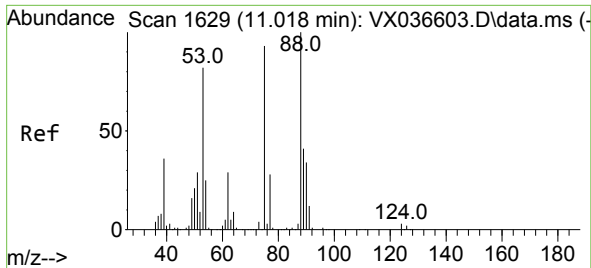
Tgt Ion: 91 Resp: 3895  
 Ion Ratio Lower Upper  
 91 100  
 126 3.1 16.3 48.8#



#80  
 1,3,5-Trimethylbenzene  
 Concen: 4.194 ug/l  
 RT: 11.451 min Scan# 1700  
 Delta R.T. -0.000 min  
 Lab File: VX036996.D  
 Acq: 15 Aug 2023 18:32

Tgt Ion: 105 Resp: 30076  
 Ion Ratio Lower Upper  
 105 100  
 120 49.7 24.1 72.3

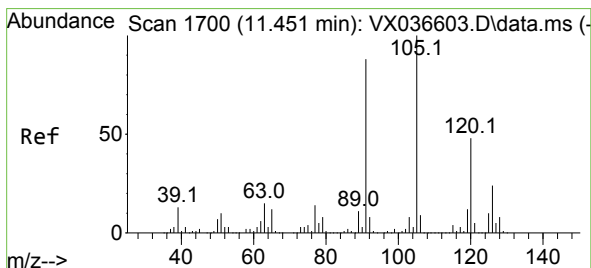
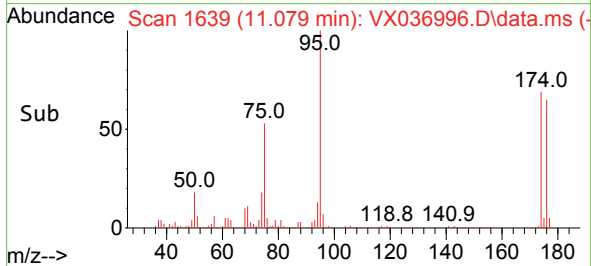
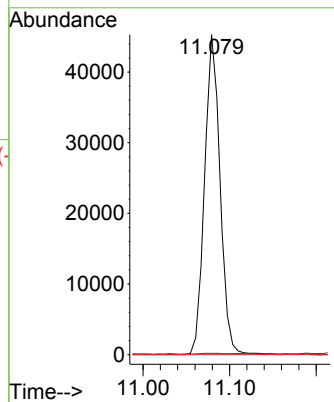
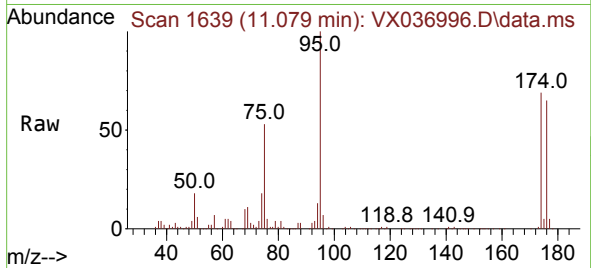




#81  
 trans-1,4-Dichloro-2-butene  
 Concen: 52.403 ug/l  
 RT: 11.079 min Scan# 1100  
 Delta R.T. 0.061 min  
 Lab File: VX036996.D  
 Acq: 15 Aug 2023 18:32

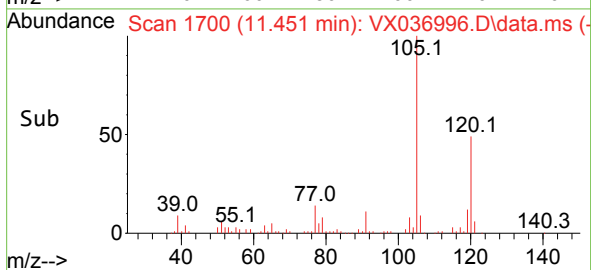
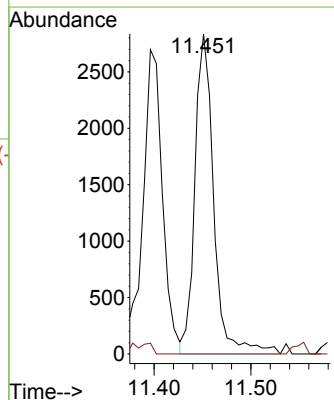
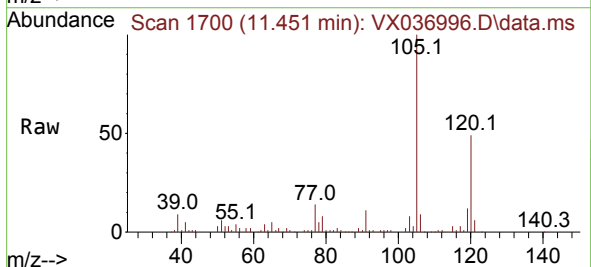
Instrument : MSVOA\_X  
 ClientSampleId : NEVINS-SB-01-Z20-22

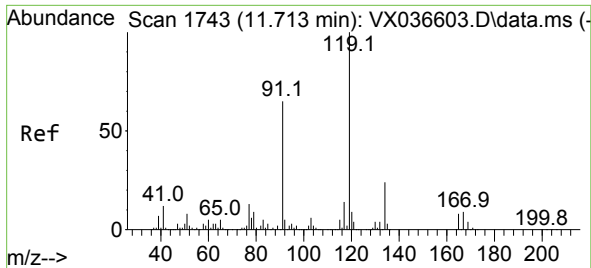
Tgt Ion: 75 Resp: 56330  
 Ion Ratio Lower Upper  
 75 100  
 53 0.4 90.5 135.7#  
 89 0.0 36.9 55.3#



#82  
 4-Chlorotoluene  
 Concen: 0.560 ug/l  
 RT: 11.451 min Scan# 1700  
 Delta R.T. -0.000 min  
 Lab File: VX036996.D  
 Acq: 15 Aug 2023 18:32

Tgt Ion: 91 Resp: 3833  
 Ion Ratio Lower Upper  
 91 100  
 126 0.0 14.2 42.6#



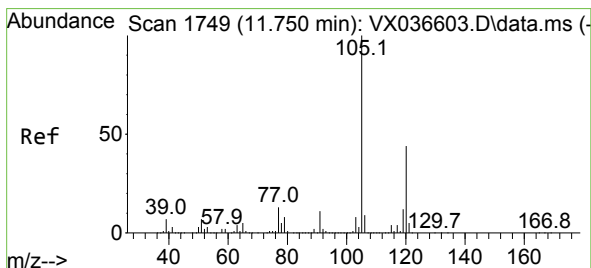
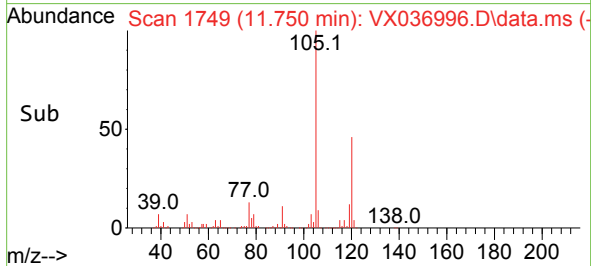
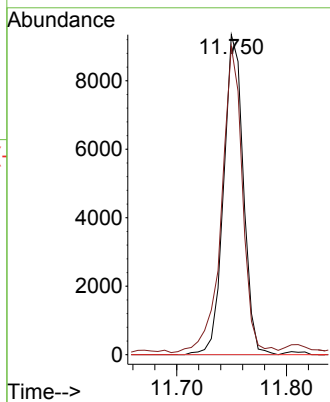
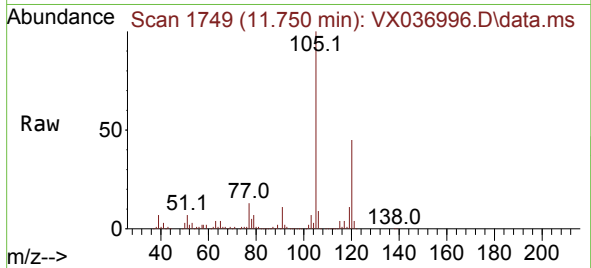


#83  
 tert-Butylbenzene  
 Concen: 1.657 ug/l  
 RT: 11.750 min Scan# 1749  
 Delta R.T. 0.037 min  
 Lab File: VX036996.D  
 Acq: 15 Aug 2023 18:32

Instrument : MSVOA\_X  
 ClientSampleId : NEVINS-SB-01-Z20-22

Tgt Ion:119 Resp: 11677

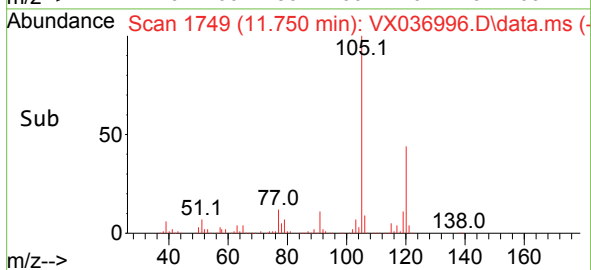
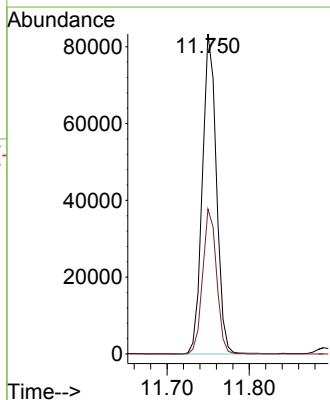
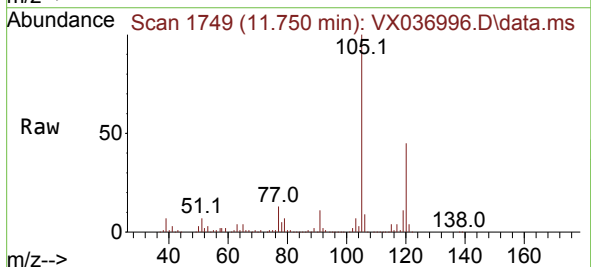
Ion	Ratio	Lower	Upper
119	100		
91	101.5	31.2	93.6#
134	0.0	11.7	35.0#

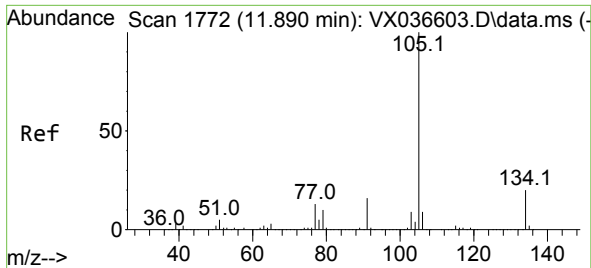


#84  
 1,2,4-Trimethylbenzene  
 Concen: 13.811 ug/l  
 RT: 11.750 min Scan# 1749  
 Delta R.T. -0.000 min  
 Lab File: VX036996.D  
 Acq: 15 Aug 2023 18:32

Tgt Ion:105 Resp: 99056

Ion	Ratio	Lower	Upper
105	100		
120	44.8	21.2	63.6

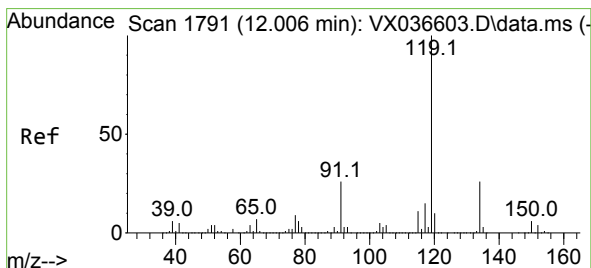
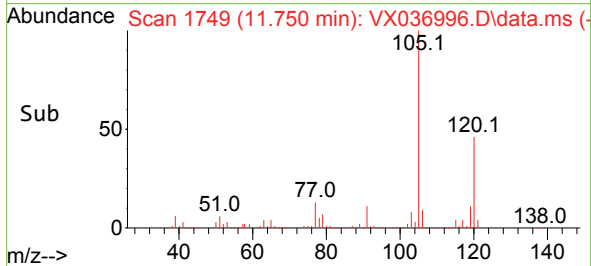
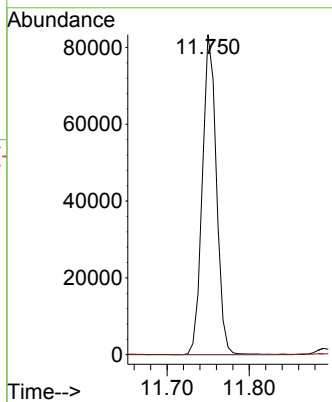
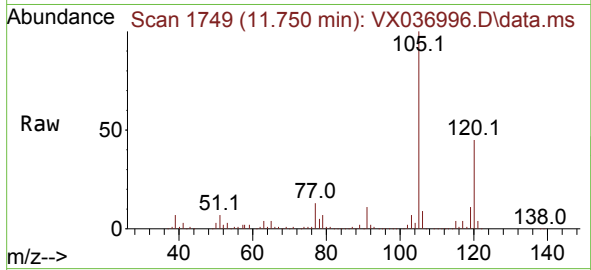




#85  
 sec-Butylbenzene  
 Concen: 11.274 ug/l  
 RT: 11.750 min Scan# 1749  
 Delta R.T. -0.140 min  
 Lab File: VX036996.D  
 Acq: 15 Aug 2023 18:32

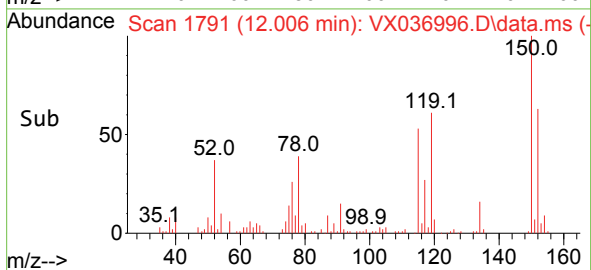
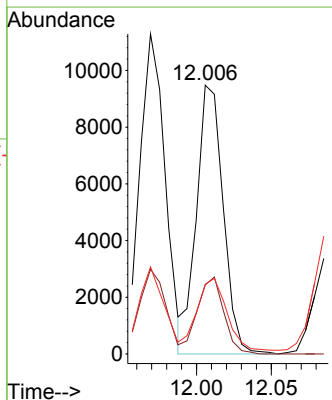
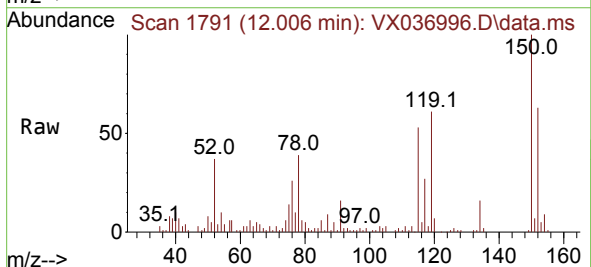
Instrument : MSVOA\_X  
 ClientSampleId : NEVINS-SB-01-Z20-22

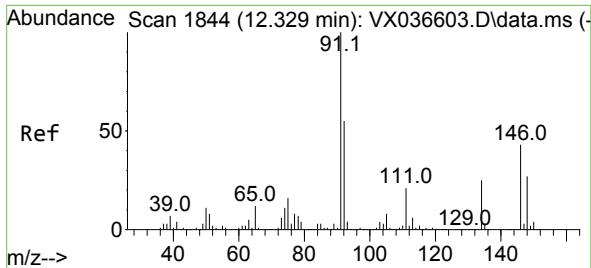
Tgt Ion:105 Resp: 99056  
 Ion Ratio Lower Upper  
 105 100  
 134 0.0 9.8 29.4#



#86  
 p-Isopropyltoluene  
 Concen: 1.630 ug/l  
 RT: 12.006 min Scan# 1791  
 Delta R.T. -0.000 min  
 Lab File: VX036996.D  
 Acq: 15 Aug 2023 18:32

Tgt Ion:119 Resp: 11786  
 Ion Ratio Lower Upper  
 119 100  
 134 28.4 12.8 38.3  
 91 30.7 13.1 39.3



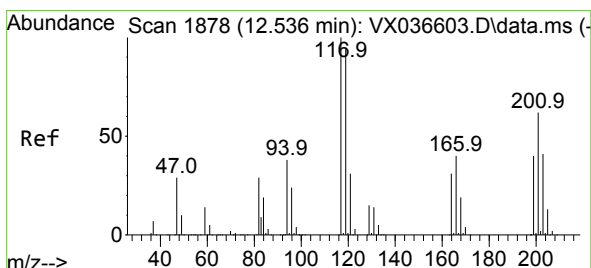
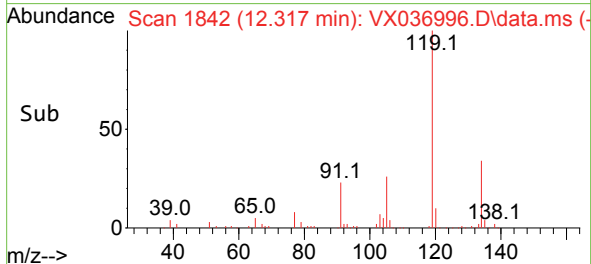
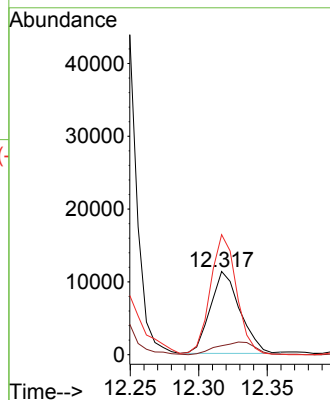
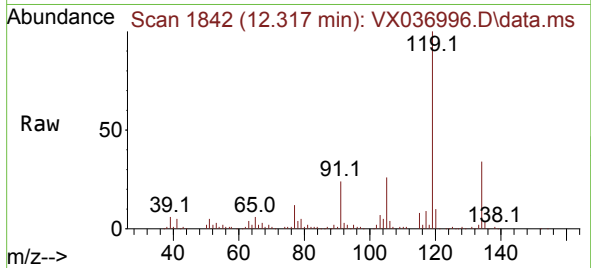


#89  
 n-Butylbenzene  
 Concen: 2.626 ug/l  
 RT: 12.317 min Scan# 11  
 Delta R.T. -0.012 min  
 Lab File: VX036996.D  
 Acq: 15 Aug 2023 18:32

Instrument : MSVOA\_X  
 ClientSampleId : NEVINS-SB-01-Z20-22

Tgt Ion: 91 Resp: 16992

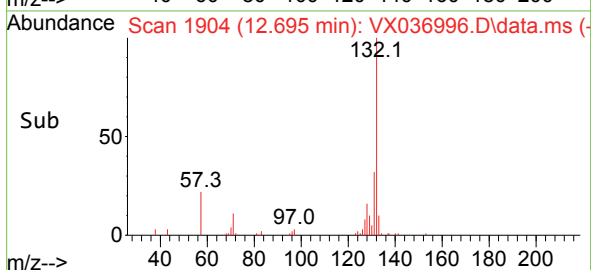
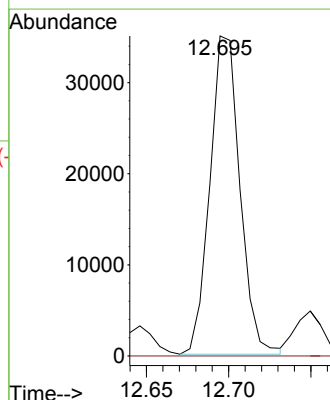
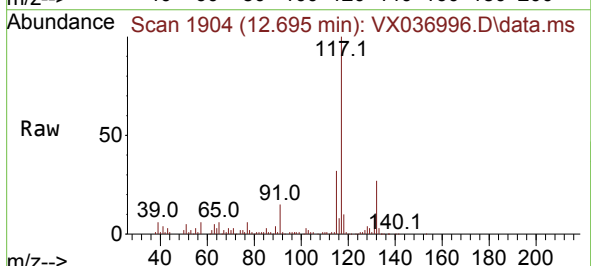
Ion	Ratio	Lower	Upper
91	100		
92	20.2	27.4	82.0#
134	129.6	12.6	37.8#

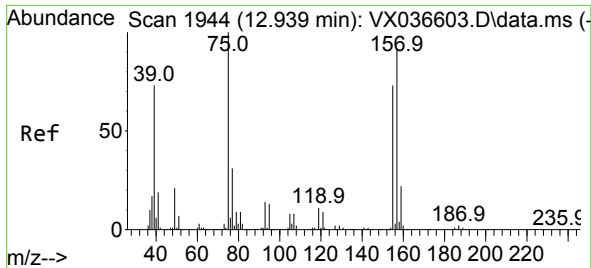


#90  
 Hexachloroethane  
 Concen: 30.269 ug/l  
 RT: 12.695 min Scan# 1904  
 Delta R.T. 0.158 min  
 Lab File: VX036996.D  
 Acq: 15 Aug 2023 18:32

Tgt Ion: 117 Resp: 44364

Ion	Ratio	Lower	Upper
117	100		
201	0.0	32.9	98.6#



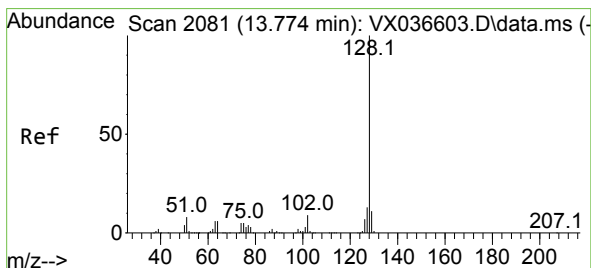
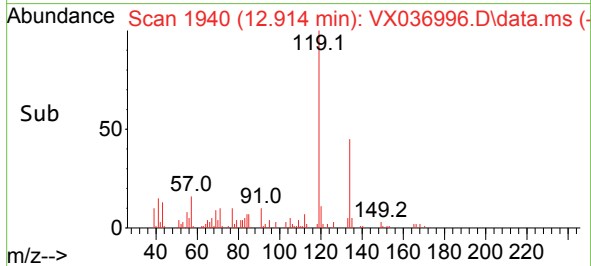
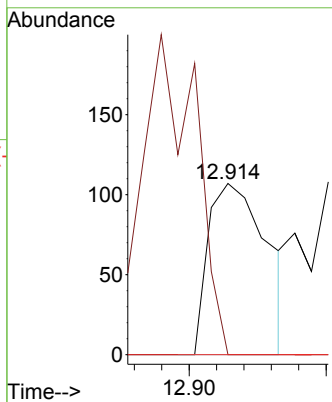
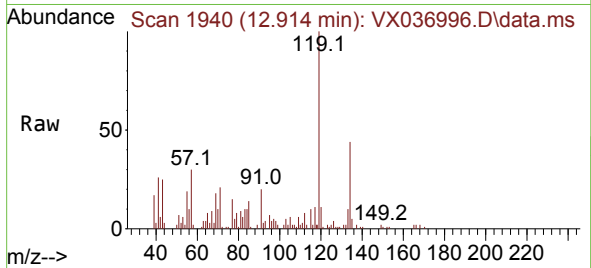


#92  
 1,2-Dibromo-3-Chloropropane  
 Concen: 0.236 ug/l  
 RT: 12.914 min Scan# 1940  
 Delta R.T. -0.024 min  
 Lab File: VX036996.D  
 Acq: 15 Aug 2023 18:32

Instrument : MSVOA\_X  
 ClientSampleId : NEVINS-SB-01-Z20-22

Tgt Ion: 75 Resp: 159

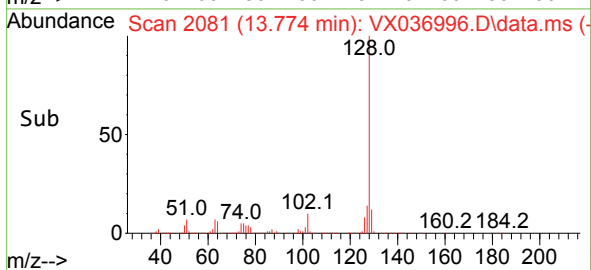
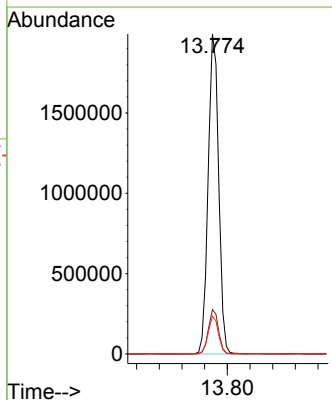
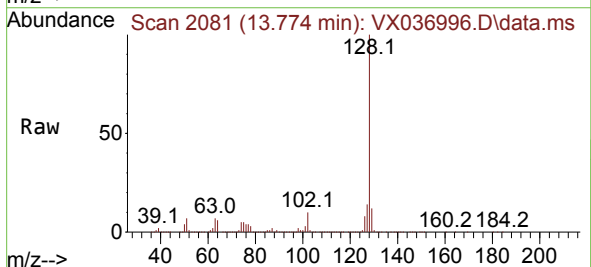
Ion	Ratio	Lower	Upper
75	100		
155	0.0	36.1	108.5#
157	0.0	44.9	134.7#



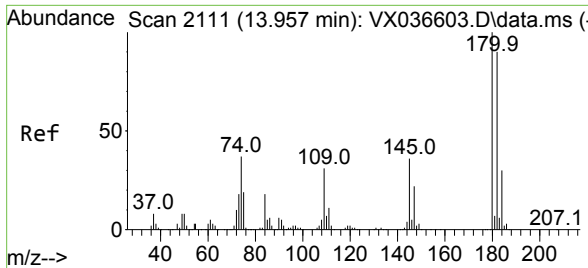
#95  
 Naphthalene  
 Concen: 342.270 ug/l  
 RT: 13.774 min Scan# 2081  
 Delta R.T. -0.000 min  
 Lab File: VX036996.D  
 Acq: 15 Aug 2023 18:32

Tgt Ion: 128 Resp: 2564033

Ion	Ratio	Lower	Upper
128	100		
127	13.4	10.3	15.5
129	11.5	8.8	13.2

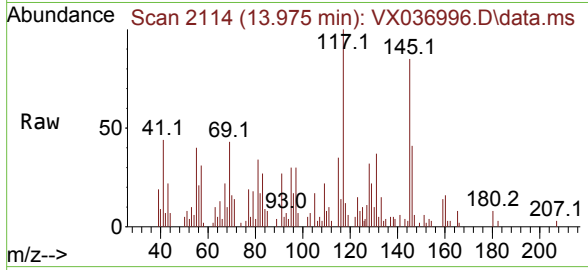






#96  
 1,2,3-Trichlorobenzene  
 Concen: 0.243 ug/l  
 RT: 13.975 min Scan# 21  
 Delta R.T. 0.018 min  
 Lab File: VX036996.D  
 Acq: 15 Aug 2023 18:32

Instrument :  
 MSVOA\_X  
 ClientSampleId :  
 NEVINS-SB-01-Z20-22



Tgt Ion:180 Resp: 515

Ion	Ratio	Lower	Upper
180	100		
182	32.8	46.9	140.6#
145	553.0	17.8	53.5#

