

Data Path : Z:\VOASRV\HPCHEM1\MSVOA X\DATA\VX081619\
 Data File : VX011580.D
 Acq On : 16 Aug 2019 14:50
 Operator : JC/SP
 Sample : K4368-01
 Misc : 5.0mL/MSVOA X/WATER
 ALS Vial : 11 Sample Multiplier: 1

Instrument :
 MSVOA_X
 ClientSampled :
 PH2-0134

Integration Parameters: RTEINT.P

Integrator: RTE
 Smoothing : ON
 Sampling : 1
 Start Thrs: 0.2
 Stop Thrs : 0

Filtering: 5
 Min Area: 3 % of largest Peak
 Max Peaks: 100
 Peak Location: TOP

If leading or trailing edge < 100 prefer < Baseline drop else tangent >
 Peak separation: 5

Method : Z:\VOASRV\HPCHEM1\MSVOA_X\METHOD\82X081519W.M
 Title : SW846 8260

Signal : TIC

peak #	R.T. min	first scan	max scan	last scan	PK TY	peak height	corr. area	corr. % max.	% of total
1	1.270	15	19	26	rBV3	9213	20763	1.04%	0.146%
2	1.782	99	103	110	rVB	35157	46340	2.32%	0.326%
3	2.837	269	276	284	rBV	17105	37638	1.89%	0.265%
4	3.166	323	330	338	rVB	25696	56865	2.85%	0.400%
5	5.495	700	712	721	rBV	211841	602616	30.23%	4.238%
6	5.653	728	738	747	rBV	386667	1080849	54.22%	7.601%
7	5.946	778	786	795	rVB8	14453	38029	1.91%	0.267%
8	6.055	795	804	814	rBV	211404	549199	27.55%	3.862%
9	6.263	828	838	844	rBV5	23076	76282	3.83%	0.536%
10	6.348	846	852	862	rVB3	31940	94479	4.74%	0.664%
11	6.854	924	935	952	rBV	555069	1305313	65.48%	9.180%
12	7.445	1026	1032	1043	rVB5	43470	111555	5.60%	0.785%
13	7.848	1091	1098	1103	rBV	38500	74945	3.76%	0.527%
14	8.031	1120	1128	1141	rVB3	54117	156206	7.84%	1.099%
15	8.177	1144	1152	1159	rBV	64281	129471	6.49%	0.911%
16	8.384	1178	1186	1193	rBV3	26464	56237	2.82%	0.395%
17	8.714	1227	1240	1253	rBV	1099616	1774822	89.03%	12.482%
18	8.835	1255	1260	1266	rVB	49437	81257	4.08%	0.571%
19	9.037	1287	1293	1303	rVB	146248	231228	11.60%	1.626%
20	9.159	1306	1313	1319	rBV	25901	45112	2.26%	0.317%
21	9.567	1372	1380	1386	rBV3	22970	42251	2.12%	0.297%
22	9.677	1391	1398	1402	rBV	76083	119069	5.97%	0.837%
23	10.110	1463	1469	1478	rBV	1101278	1480816	74.28%	10.414%
24	10.183	1478	1481	1485	rVV2	14535	20235	1.02%	0.142%
25	10.250	1485	1492	1502	rVV	1526465	1993468	100.00%	14.019%
26	10.353	1502	1509	1516	rVB6	33020	73241	3.67%	0.515%
27	11.018	1613	1618	1629	rVB	342163	463401	23.25%	3.259%
28	11.134	1631	1637	1643	rBV	958356	1206547	60.53%	8.485%
29	11.274	1653	1660	1665	rBV7	13154	24687	1.24%	0.174%
30	11.359	1668	1674	1683	rBV	171858	228466	11.46%	1.607%
31	11.664	1716	1724	1734	rBV	63069	94809	4.76%	0.667%
32	11.945	1767	1770	1777	rVB	28299	35830	1.80%	0.252%
33	12.073	1786	1791	1798	rBV	1163610	1445540	72.51%	10.166%
34	12.140	1798	1802	1806	rVB	17836	22203	1.11%	0.156%

Data Path : Z:\VOASRV\HPCHEM1\MSVOA X\DATA\VX081619\
Data File : VX011580.D
Acq On : 16 Aug 2019 14:50
Operator : JC/SP
Sample : K4368-01
Misc : 5.0mL/MSVOA X/WATER
ALS Vial : 11 Sample Multiplier: 1

Instrument :
MSVOA_X
ClientSampled :
PH2-0134

Integration Parameters: RTEINT.P
Integrator: RTE
Smoothing : ON Filtering: 5
Sampling : 1 Min Area: 3 % of largest Peak
Start Thrs: 0.2 Max Peaks: 100
Stop Thrs : 0 Peak Location: TOP

If leading or trailing edge < 100 prefer < Baseline drop else tangent >
Peak separation: 5

Method : Z:\VOASRV\HPCHEM1\MSVOA_X\METHOD\82X081519W.M
Title : SW846 8260

35	12.298	1821	1828	1833	rVV	143460	188613	9.46%	1.326%
36	12.365	1833	1839	1849	rVB4	15610	34777	1.74%	0.245%
37	12.664	1880	1888	1891	rBV	18588	29264	1.47%	0.206%
38	12.701	1891	1894	1898	rVV	18916	24706	1.24%	0.174%
39	12.755	1898	1903	1909	rVB2	35224	54323	2.73%	0.382%
40	13.341	1995	1999	2005	rVB3	26175	37687	1.89%	0.265%
41	13.713	2054	2060	2067	rVB3	12122	30229	1.52%	0.213%

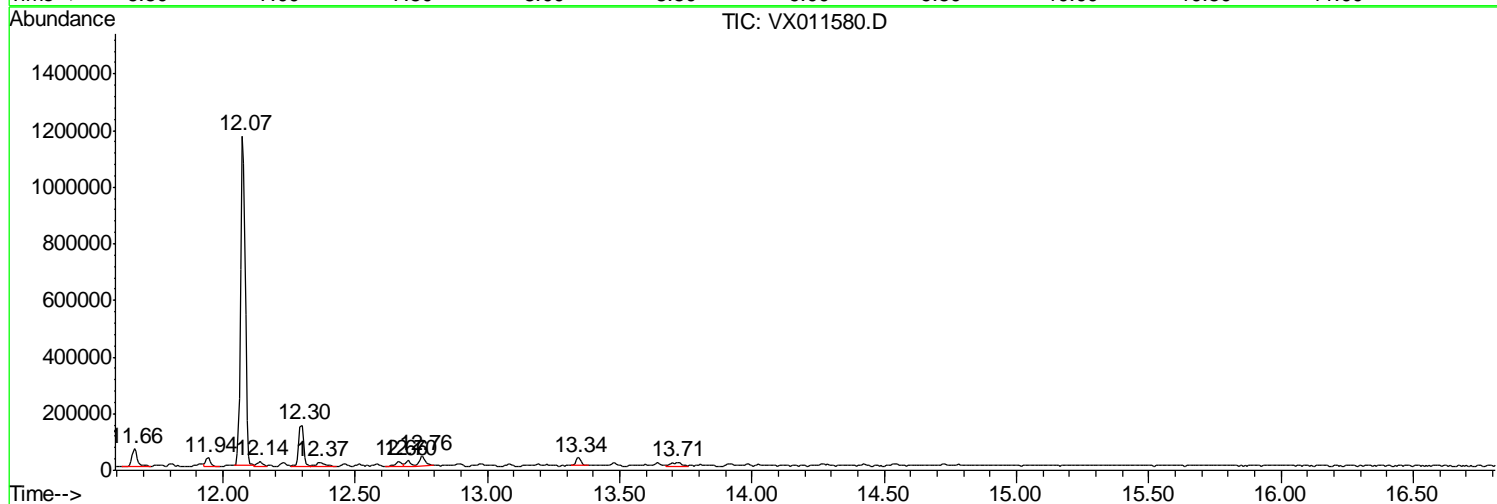
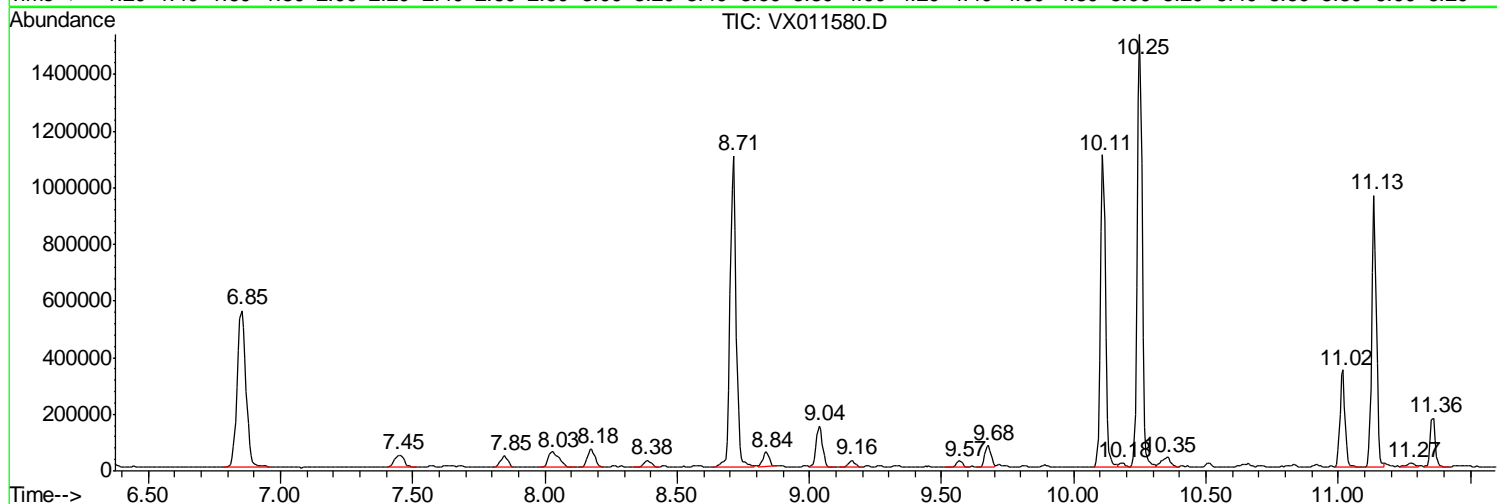
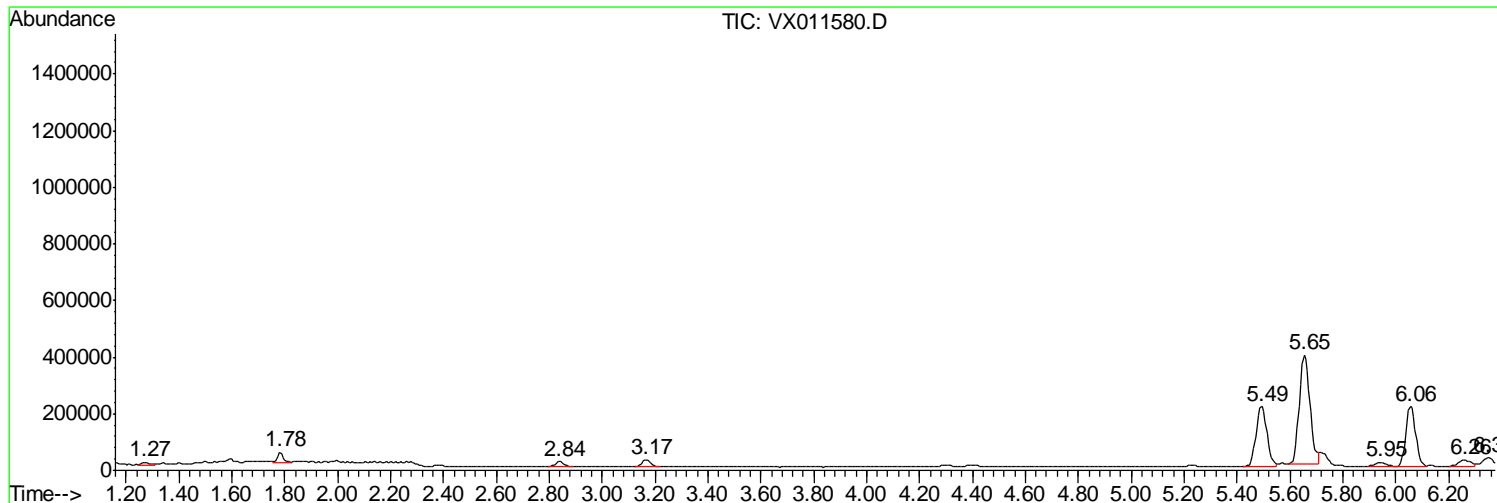
Sum of corrected areas: 14219368

Data Path : Z:\VOASRV\HPCHEM1\MSVOA X\DATA\VX081619\
 Data File : VX011580.D
 Acq On : 16 Aug 2019 14:50
 Operator : JC/SP
 Sample : K4368-01
 Misc : 5.0mL/MSVOA X/WATER
 ALS Vial : 11 Sample Multiplier: 1

Instrument :
 MSVOA_X
 ClientSampled :
 PH2-0134

Quant Method : Z:\VOASRV\HPCHEM1\MSVOA_X\METHOD\82X081519W.M
 Quant Title : SW846 8260

TIC Library : C:\DATABASE\NIST11.L
 TIC Integration Parameters: LSCINT.P



Data Path : Z:\VOASRV\HPCHEM1\MSVOA X\DATA\VX081619\
 Data File : VX011580.D
 Acq On : 16 Aug 2019 14:50
 Operator : JC/SP
 Sample : K4368-01
 Misc : 5.0mL/MSVOA X/WATER
 ALS Vial : 11 Sample Multiplier: 1

Instrument :
 MSVOA_X
 ClientSampleID :
 PH2-0134

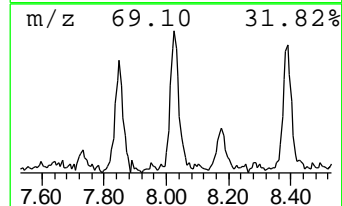
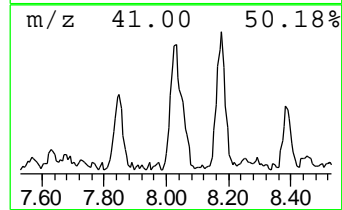
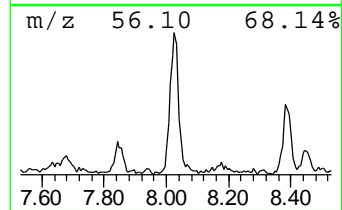
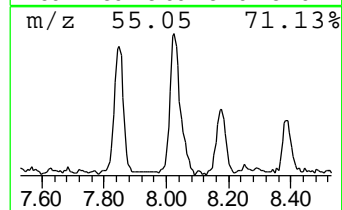
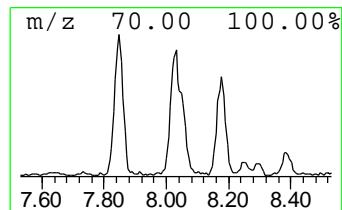
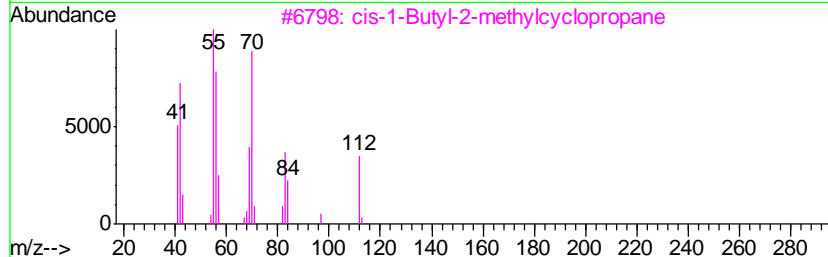
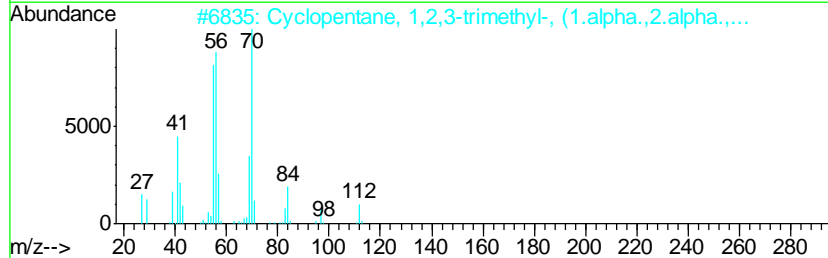
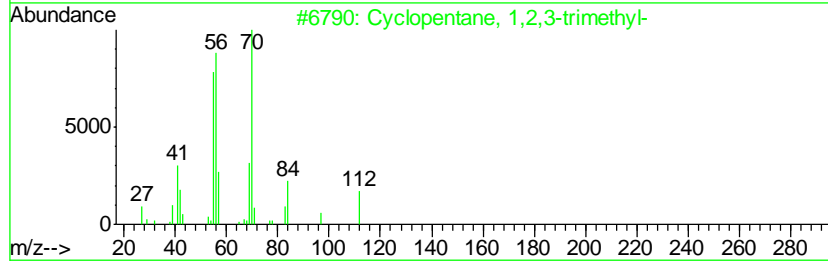
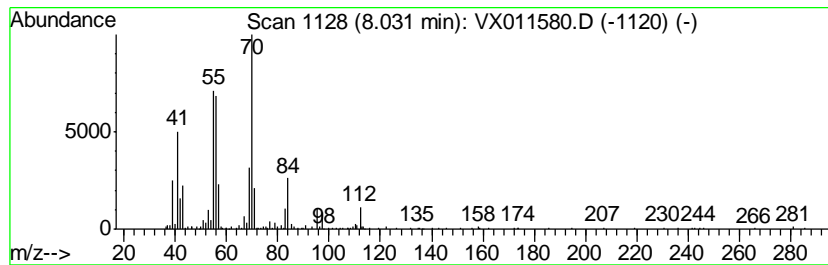
Quant Method : Z:\VOASRV\HPCHEM1\MSVOA_X\METHOD\82X081519W.M
 Quant Title : SW846 8260

TIC Library : C:\DATABASE\NIST11.L
 TIC Integration Parameters: LSCINT.P

 Peak Number 1 Cyclopentane, 1,2,3-trimethyl- Concentration Rank 3

R.T.	EstConc	Area	Relative to ISTD	R.T.
8.03	5.98 ug/l	156206	1,4-Difluorobenzene	6.85

Hit#	of	Tentative ID	MW	MolForm	CAS#	Qual
1	5	Cyclopentane, 1,2,3-trimethyl-	112	C8H16	002815-57-8	87
2		Cyclopentane, 1,2,3-trimethyl-, ...	112	C8H16	015890-40-1	87
3		cis-1-Butyl-2-methylcyclopropane	112	C8H16	038851-69-3	64
4		Cyclopentane, 1,2,4-trimethyl-	112	C8H16	002815-58-9	52
5		Hexane, 2-methyl-4-methylene-	112	C8H16	003404-80-6	49



Data Path : Z:\VOASRV\HPCHEM1\MSVOA X\DATA\VX081619\
 Data File : VX011580.D
 Acq On : 16 Aug 2019 14:50
 Operator : JC/SP
 Sample : K4368-01
 Misc : 5.0mL/MSVOA X/WATER
 ALS Vial : 11 Sample Multiplier: 1

Instrument :
 MSVOA_X
 ClientSampled :
 PH2-0134

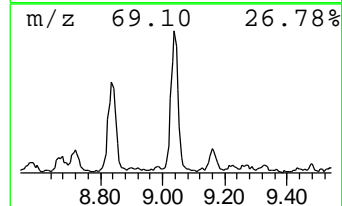
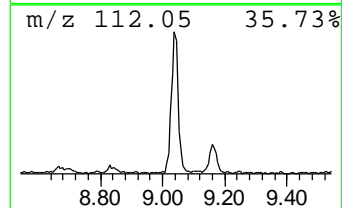
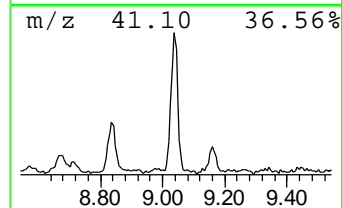
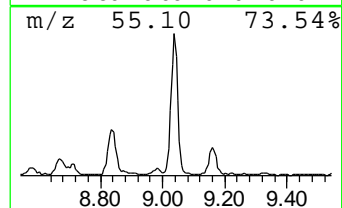
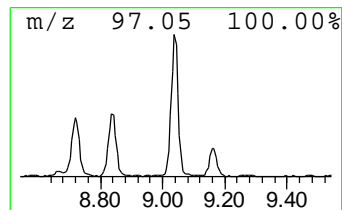
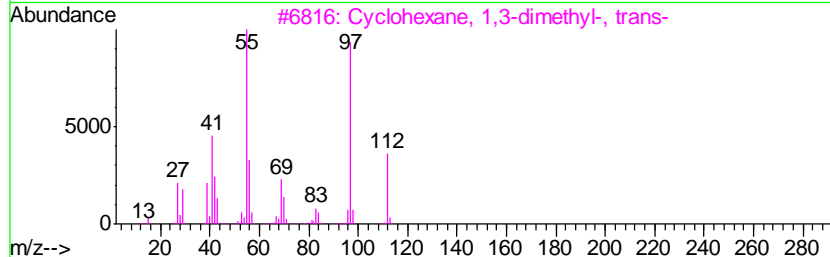
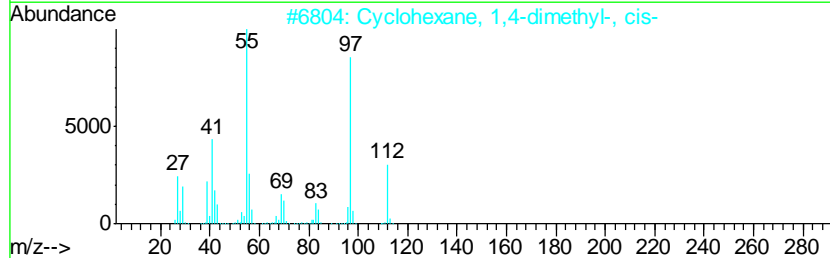
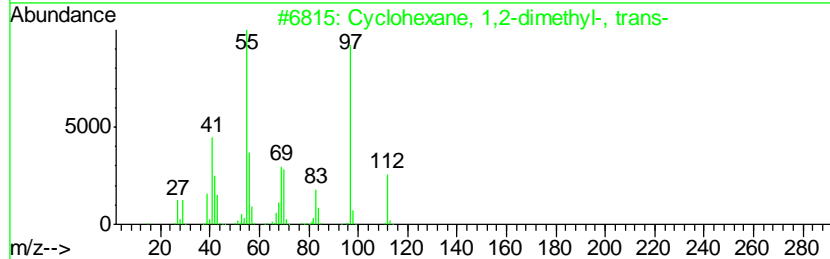
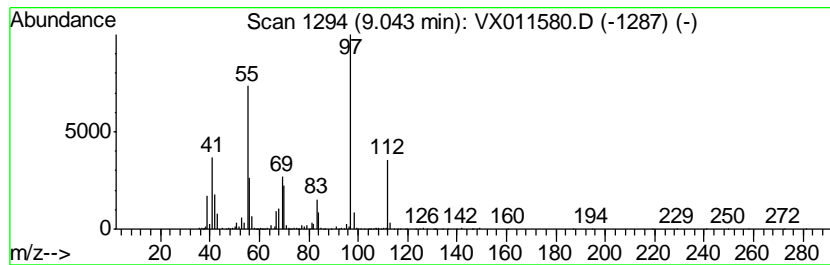
Quant Method : Z:\VOASRV\HPCHEM1\MSVOA_X\METHOD\82X081519W.M
 Quant Title : SW846 8260

TIC Library : C:\DATABASE\NIST11.L
 TIC Integration Parameters: LSCINT.P

 Peak Number 2 Cyclohexane, 1,2-dimethyl-,... Concentration Rank 1

R.T.	EstConc	Area	Relative to ISTD	R.T.
9.04	7.81 ug/l	231228	Chlorobenzene-d5	10.11

Hit#	of	Tentative ID	MW	MolForm	CAS#	Qual
1	5	Cyclohexane, 1,2-dimethyl-, trans-	112	C8H16	006876-23-9	95
2		Cyclohexane, 1,4-dimethyl-, cis-	112	C8H16	000624-29-3	90
3		Cyclohexane, 1,3-dimethyl-, trans-	112	C8H16	002207-03-6	90
4		Cyclohexane, 1,4-dimethyl-, trans-	112	C8H16	002207-04-7	90
5		Cyclohexane, 1,2-dimethyl- (cis/...	112	C8H16	000583-57-3	90



Data Path : Z:\VOASRV\HPCHEM1\MSVOA X\DATA\VX081619\
 Data File : VX011580.D
 Acq On : 16 Aug 2019 14:50
 Operator : JC/SP
 Sample : K4368-01
 Misc : 5.0mL/MSVOA X/WATER
 ALS Vial : 11 Sample Multiplier: 1

Instrument :
 MSVOA_X
 ClientSampled :
 PH2-0134

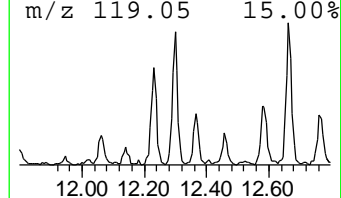
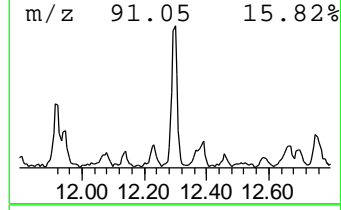
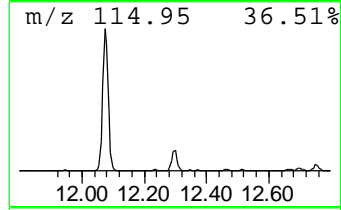
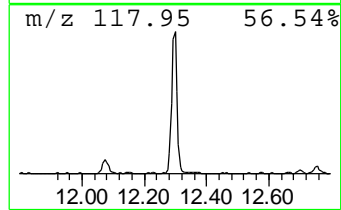
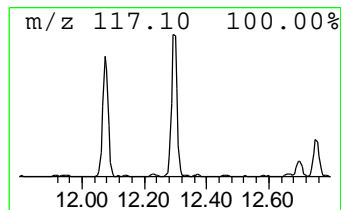
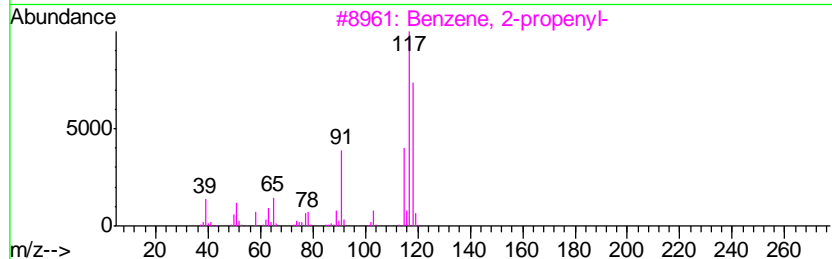
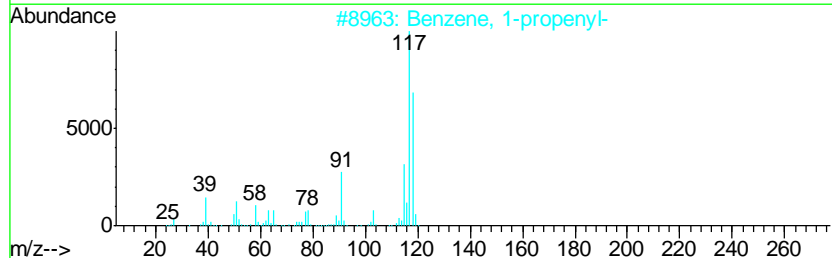
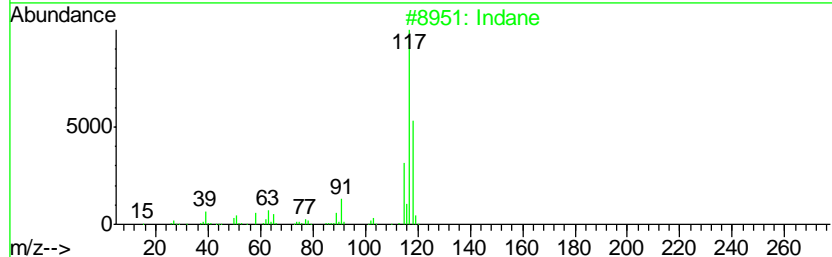
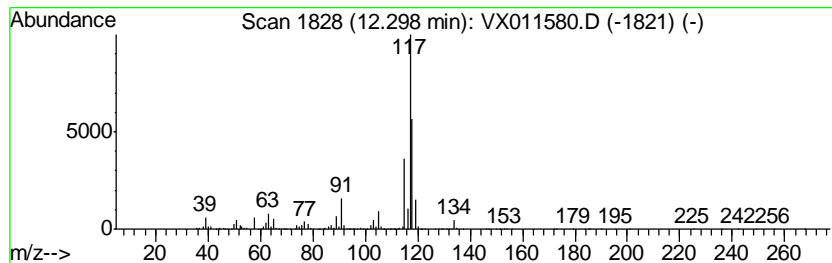
Quant Method : Z:\VOASRV\HPCHEM1\MSVOA_X\METHOD\82X081519W.M
 Quant Title : SW846 8260

TIC Library : C:\DATABASE\NIST11.L
 TIC Integration Parameters: LSCINT.P

 Peak Number 3 Indane Concentration Rank 2

R.T.	EstConc	Area	Relative to ISTD	R.T.
12.30	6.52 ug/l	188613	1,4-Dichlorobenzene-d4	12.07

Hit#	of	Tentative ID	MW	MolForm	CAS#	Qual
1	5	Indane	118	C9H10	000496-11-7	94
2		Benzene, 1-propenyl-	118	C9H10	000637-50-3	68
3		Benzene, 2-propenyl-	118	C9H10	000300-57-2	64
4		Deltacyclene	118	C9H10	007785-10-6	64
5		Benzene, cyclopropyl-	118	C9H10	000873-49-4	64



Data Path : Z:\VOASRV\HPCHEM1\MSVOA_X\DATA\VX081619\
Data File : VX011580.D
Acq On : 16 Aug 2019 14:50
Operator : JC/SP
Sample : K4368-01
Misc : 5.0mL/MSVOA_X/WATER
ALS Vial : 11 Sample Multiplier: 1

Instrument :
MSVOA_X
ClientSampleId :
PH2-0134

Quant Method : Z:\VOASRV\HPCHEM1\MSVOA_X\METHOD\82X081519W.M
Quant Title : SW846 8260

TIC Library : C:\DATABASE\NIST11.L
TIC Integration Parameters: LSCINT.P

TIC Top Hit name	RT	EstConc	Units	Response	--Internal Standard--			
					#	RT	Resp	Conc
Cyclopentane, 1,2...	8.03	6.0	ug/l	156206	2	6.85	1305310	50.0
Cyclohexane, 1,2-...	9.04	7.8	ug/l	231228	3	10.11	1480820	50.0
Indane	12.30	6.5	ug/l	188613	4	12.07	1445540	50.0