

Data Path : Z:\voasrv\HPCHEM1\MSVOA\_X\Data\VX081623\  
 Data File : VX037025.D  
 Acq On : 16 Aug 2023 18:12  
 Operator : JC/MD  
 Sample : 04024-16  
 Misc : 5.0mL/MSVOA\_X/WATER  
 ALS Vial : 22 Sample Multiplier: 1

Instrument :  
 MSVOA\_X  
 ClientSampleId :  
 TT14911-20230815

Quant Time: Aug 17 04:18:22 2023  
 Quant Method : Z:\voasrv\HPCHEM1\MSVOA\_X\Method\82X072123W.M  
 Quant Title : SW846 8260  
 QLast Update : Fri Jul 21 12:14:12 2023  
 Response via : Initial Calibration

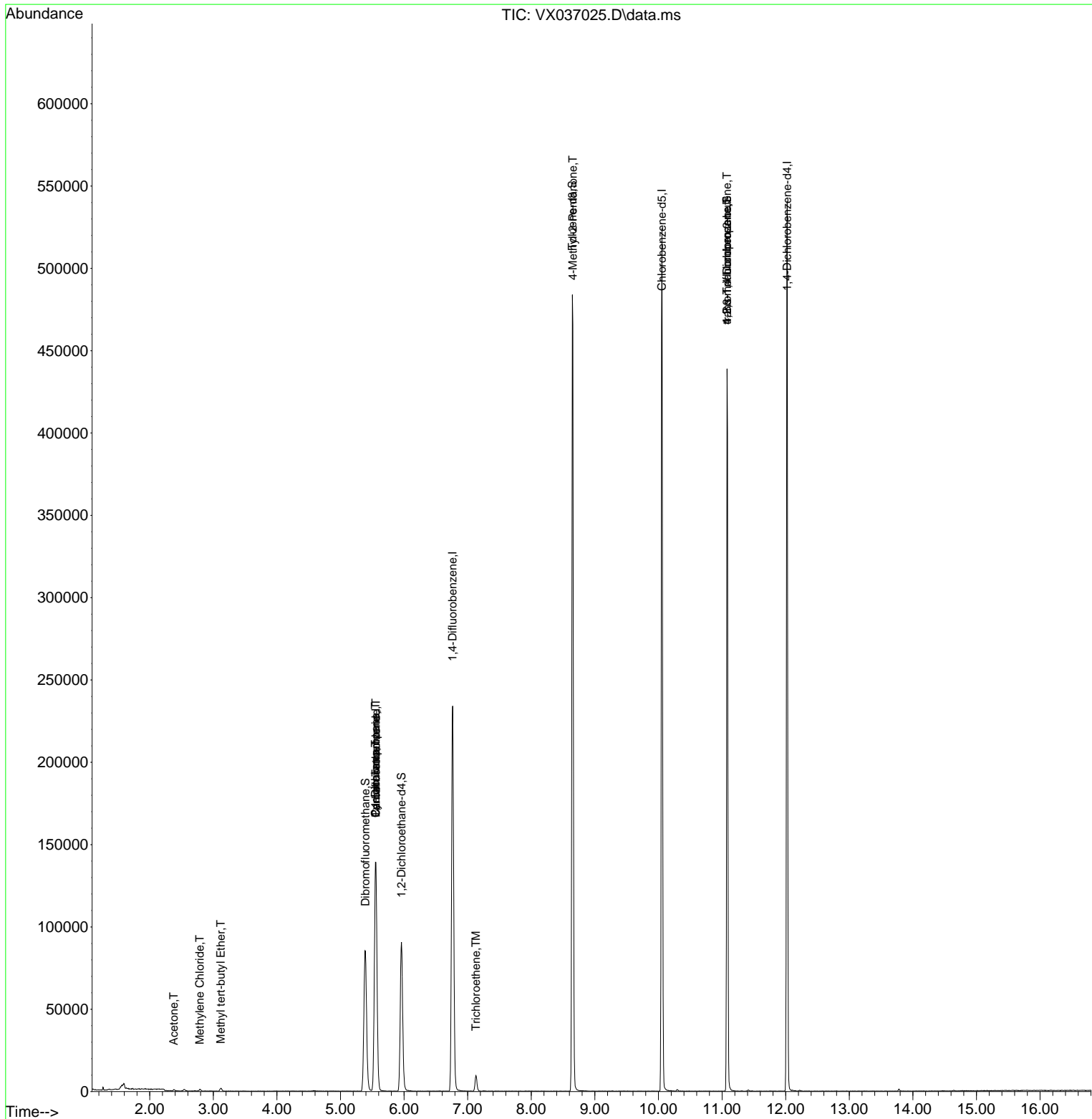
Compound	R.T.	QIon	Response	Conc	Units	Dev(Min)
-----						
Internal Standards						
1) Pentafluorobenzene	5.556	168	130085	50.000	ug/l	0.00
34) 1,4-Difluorobenzene	6.763	114	242935	50.000	ug/l	0.00
63) Chlorobenzene-d5	10.055	117	237048	50.000	ug/l	0.00
72) 1,4-Dichlorobenzene-d4	12.024	152	112347	50.000	ug/l	0.00
System Monitoring Compounds						
33) 1,2-Dichloroethane-d4	5.958	65	91794	47.690	ug/l	0.00
Spiked Amount	50.000	Range	78 - 117	Recovery	=	95.380%
35) Dibromofluoromethane	5.391	113	76596	45.871	ug/l	0.00
Spiked Amount	50.000	Range	75 - 124	Recovery	=	91.740%
50) Toluene-d8	8.647	98	292545	49.404	ug/l	0.00
Spiked Amount	50.000	Range	92 - 112	Recovery	=	98.800%
62) 4-Bromofluorobenzene	11.079	95	119585	53.528	ug/l	0.00
Spiked Amount	50.000	Range	83 - 123	Recovery	=	107.060%
Target Compounds						
					Qvalue	
16) Acetone	2.379	43	918	1.149	ug/l #	85
19) Methyl tert-butyl Ether	3.117	73	2129	0.389	ug/l	91
20) Methylene Chloride	2.788	84	600	0.338	ug/l #	89
31) Cyclohexane	5.550	56	2739	1.028	ug/l #	1
36) 1,1-Dichloropropene	5.550	75	10607	4.262	ug/l #	51
38) Carbon Tetrachloride	5.556	117	14422	5.451	ug/l #	15
44) Trichloroethene	7.129	130	3817	2.017	ug/l	87
51) 4-Methyl-2-Pentanone	8.653	43	1254	0.467	ug/l #	1
76) 1,2,3-Trichloropropane	11.079	75	63114	23.884	ug/l #	38
81) trans-1,4-Dichloro-2-b...	11.079	75	63114	54.134	ug/l #	5
-----						

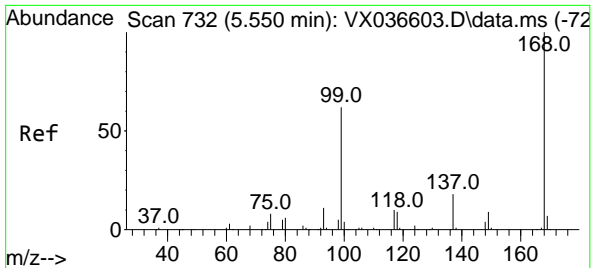
(#) = qualifier out of range (m) = manual integration (+) = signals summed

Data Path : Z:\voasrv\HPCHEM1\MSVOA\_X\Data\VX081623\  
 Data File : VX037025.D  
 Acq On : 16 Aug 2023 18:12  
 Operator : JC/MD  
 Sample : 04024-16  
 Misc : 5.0mL/MSVOA\_X/WATER  
 ALS Vial : 22 Sample Multiplier: 1

Instrument :  
 MSVOA\_X  
 ClientSampleId :  
 TT149I1-20230815

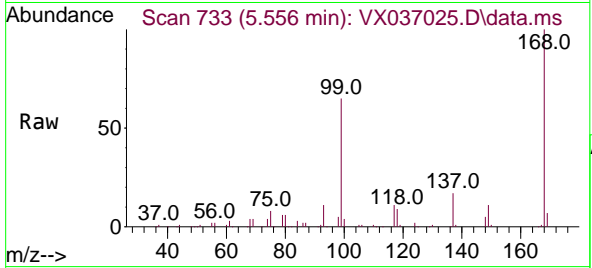
Quant Time: Aug 17 04:18:22 2023  
 Quant Method : Z:\voasrv\HPCHEM1\MSVOA\_X\Method\82X072123W.M  
 Quant Title : SW846 8260  
 QLast Update : Fri Jul 21 12:14:12 2023  
 Response via : Initial Calibration



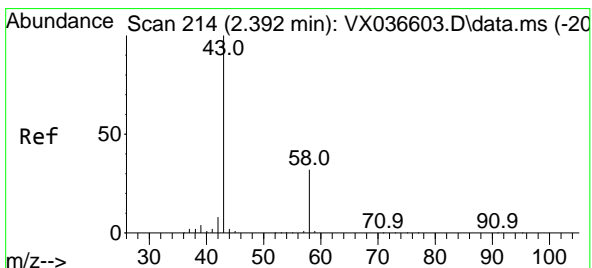
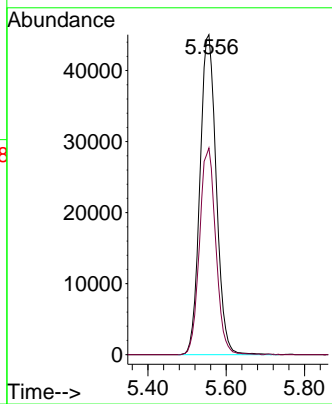
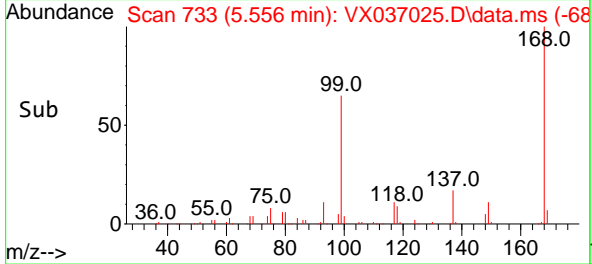


#1  
 Pentafluorobenzene  
 Concen: 50.000 ug/l  
 RT: 5.556 min Scan# 71  
 Delta R.T. 0.006 min  
 Lab File: VX037025.D  
 Acq: 16 Aug 2023 18:12

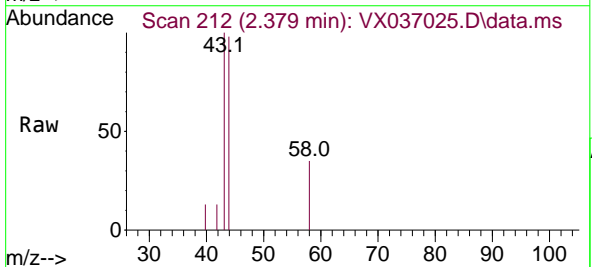
Instrument : MSVOA\_X  
 ClientSampleId : TT14911-20230815



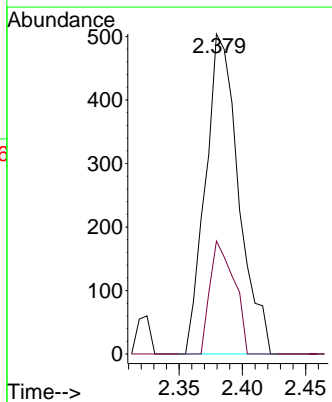
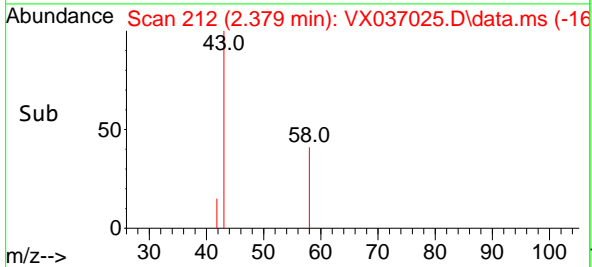
Tgt Ion:168 Resp: 130085  
 Ion Ratio Lower Upper  
 168 100  
 99 64.6 56.6 85.0

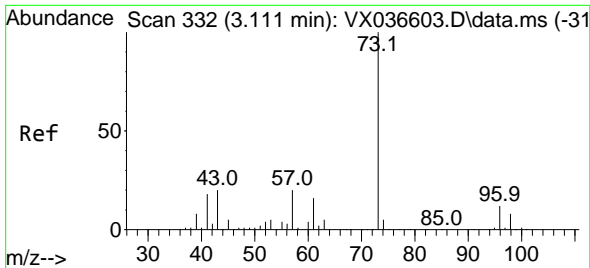


#16  
 Acetone  
 Concen: 1.149 ug/l  
 RT: 2.379 min Scan# 212  
 Delta R.T. -0.012 min  
 Lab File: VX037025.D  
 Acq: 16 Aug 2023 18:12



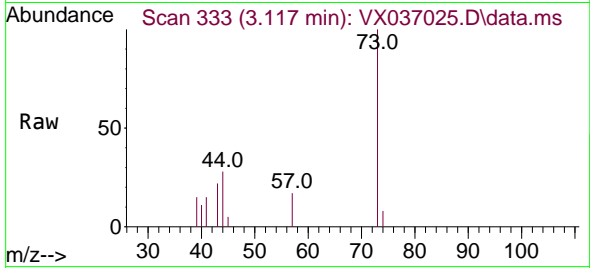
Tgt Ion: 43 Resp: 918  
 Ion Ratio Lower Upper  
 43 100  
 58 35.3 21.9 32.9#



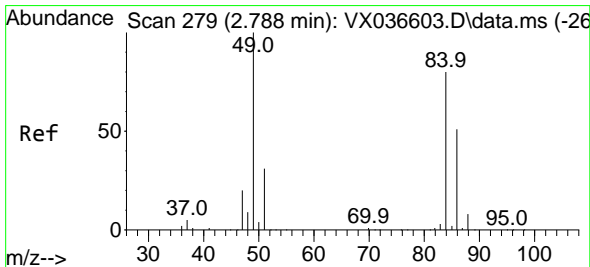
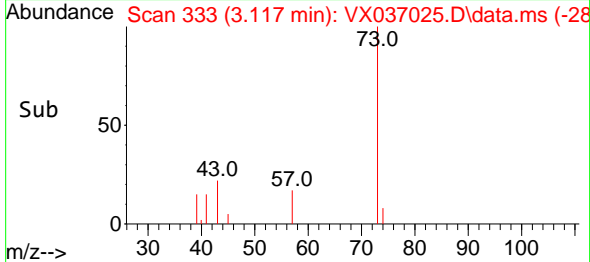
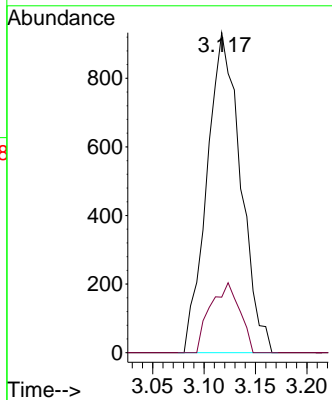


#19  
 Methyl tert-butyl Ether  
 Concen: 0.389 ug/l  
 RT: 3.117 min Scan# 311  
 Delta R.T. 0.006 min  
 Lab File: VX037025.D  
 Acq: 16 Aug 2023 18:12

Instrument : MSVOA\_X  
 ClientSampleId : TT14911-20230815

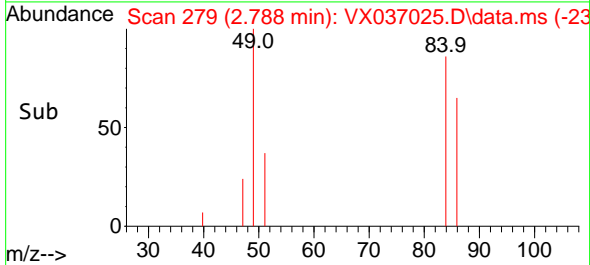
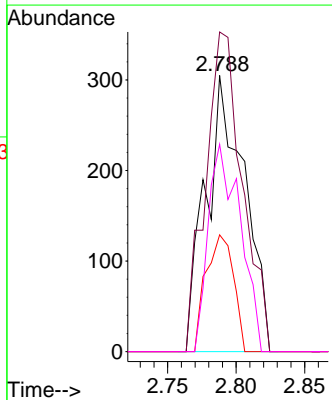
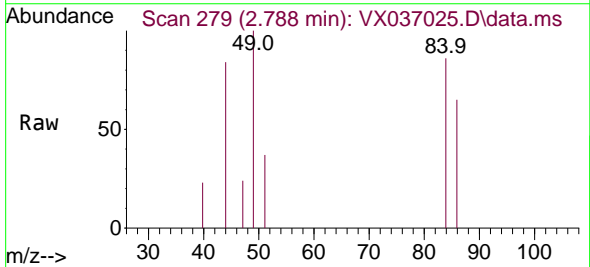


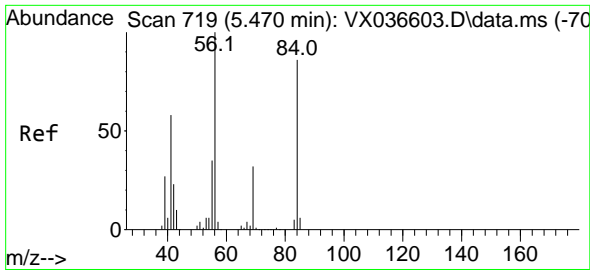
Tgt Ion: 73 Resp: 2129  
 Ion Ratio Lower Upper  
 73 100  
 57 17.4 17.3 25.9



#20  
 Methylene Chloride  
 Concen: 0.338 ug/l  
 RT: 2.788 min Scan# 279  
 Delta R.T. -0.000 min  
 Lab File: VX037025.D  
 Acq: 16 Aug 2023 18:12

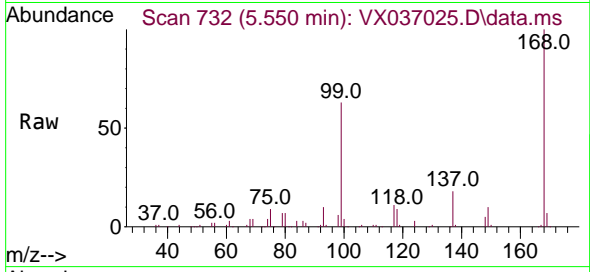
Tgt Ion: 84 Resp: 600  
 Ion Ratio Lower Upper  
 84 100  
 49 115.7 103.6 155.4  
 51 42.3 33.8 50.6  
 86 75.1 49.4 74.0#



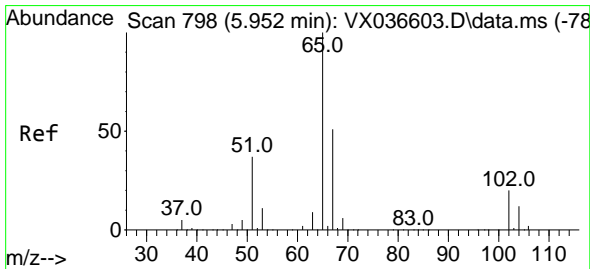
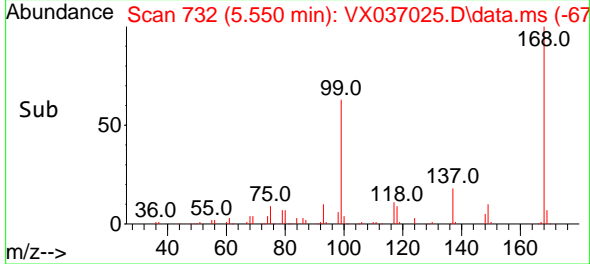
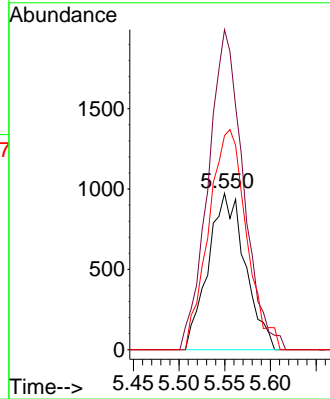


#31  
 Cyclohexane  
 Concen: 1.028 ug/l  
 RT: 5.550 min Scan# 719  
 Delta R.T. 0.079 min  
 Lab File: VX037025.D  
 Acq: 16 Aug 2023 18:12

Instrument : MSVOA\_X  
 ClientSampleId : TT14911-20230815

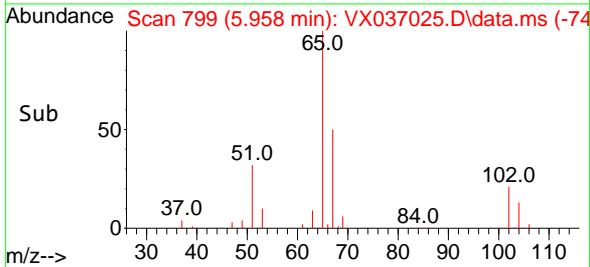
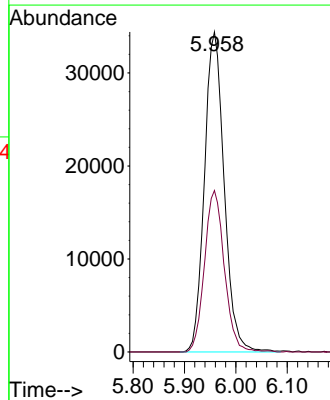
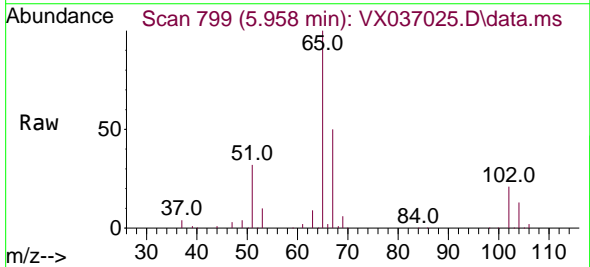


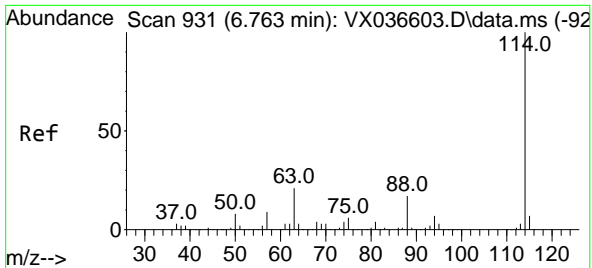
Tgt Ion: 56 Resp: 2739  
 Ion Ratio Lower Upper  
 56 100  
 69 204.7 23.4 35.2#  
 84 137.0 65.9 98.9#



#33  
 1,2-Dichloroethane-d4  
 Concen: 47.690 ug/l  
 RT: 5.958 min Scan# 799  
 Delta R.T. 0.006 min  
 Lab File: VX037025.D  
 Acq: 16 Aug 2023 18:12

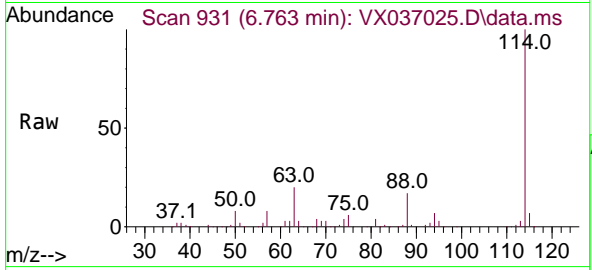
Tgt Ion: 65 Resp: 91794  
 Ion Ratio Lower Upper  
 65 100  
 67 50.8 0.0 100.2





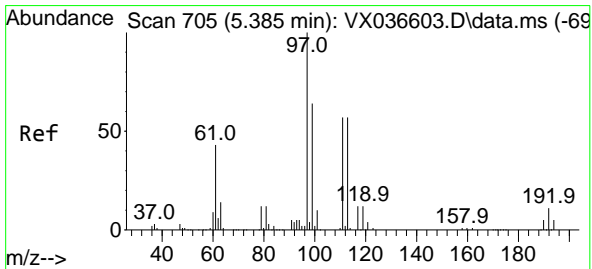
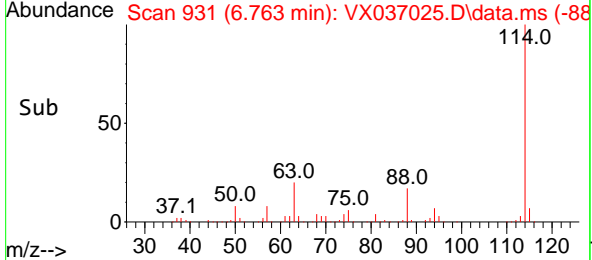
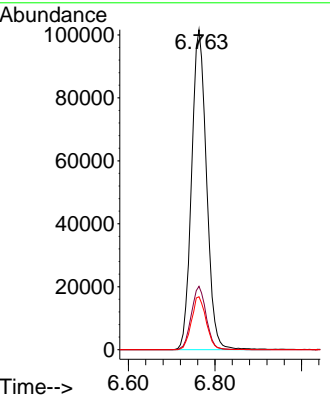
#34  
 1,4-Difluorobenzene  
 Concen: 50.000 ug/l  
 RT: 6.763 min Scan# 911  
 Delta R.T. -0.000 min  
 Lab File: VX037025.D  
 Acq: 16 Aug 2023 18:12

Instrument : MSVOA\_X  
 ClientSampleId : TT14911-20230815

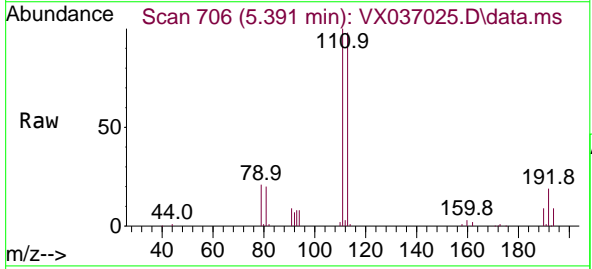


Tgt Ion:114 Resp: 242935

Ion	Ratio	Lower	Upper
114	100		
63	19.8	0.0	45.0
88	16.6	0.0	36.6

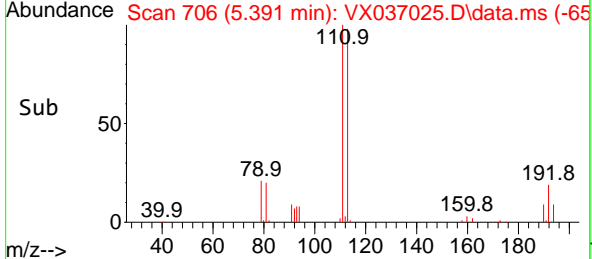
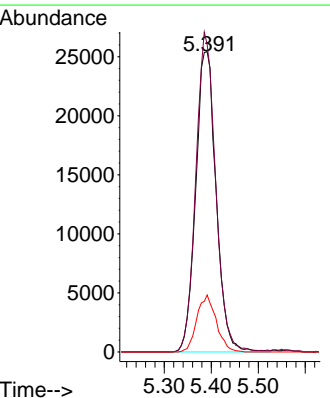


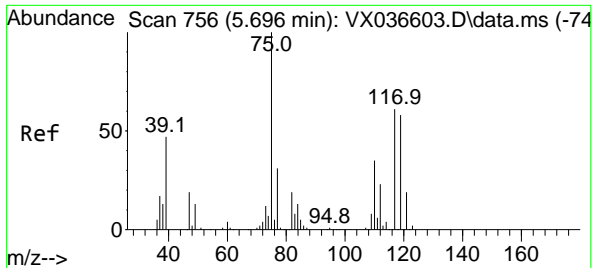
#35  
 Dibromofluoromethane  
 Concen: 45.871 ug/l  
 RT: 5.391 min Scan# 706  
 Delta R.T. 0.006 min  
 Lab File: VX037025.D  
 Acq: 16 Aug 2023 18:12



Tgt Ion:113 Resp: 76596

Ion	Ratio	Lower	Upper
113	100		
111	103.0	82.9	124.3
192	18.0	13.3	19.9

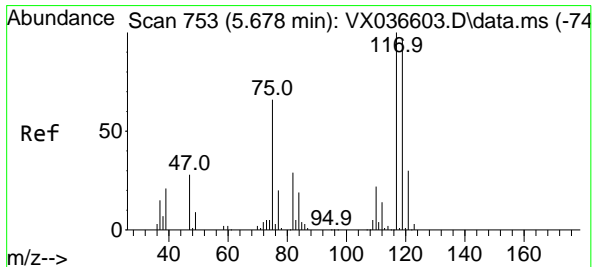
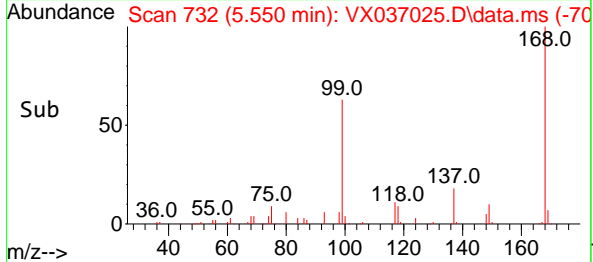
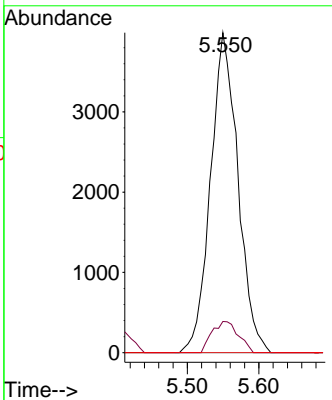
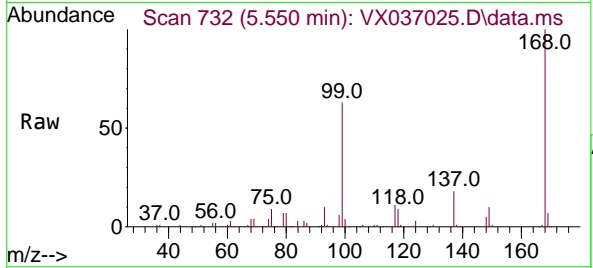




#36  
 1,1-Dichloropropene  
 Concen: 4.262 ug/l  
 RT: 5.550 min Scan# 711  
 Delta R.T. -0.146 min  
 Lab File: VX037025.D  
 Acq: 16 Aug 2023 18:12

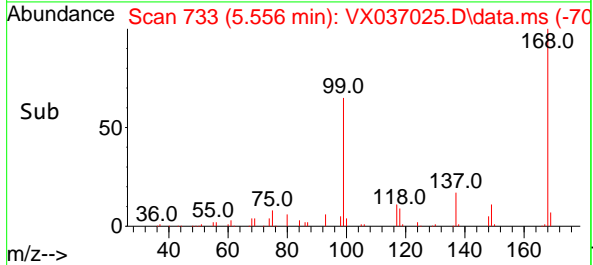
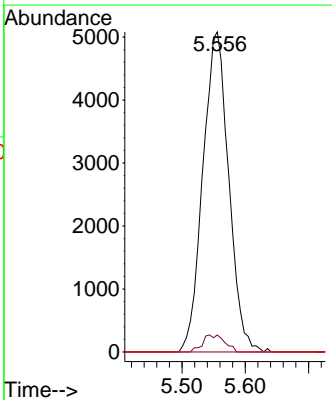
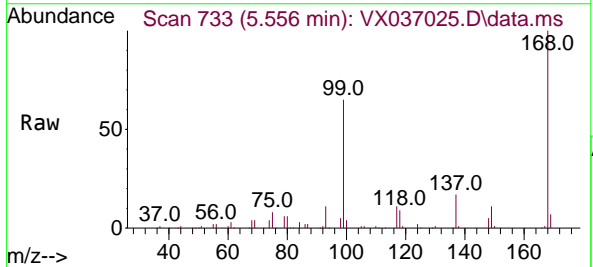
Instrument : MSVOA\_X  
 ClientSampleId : TT14911-20230815

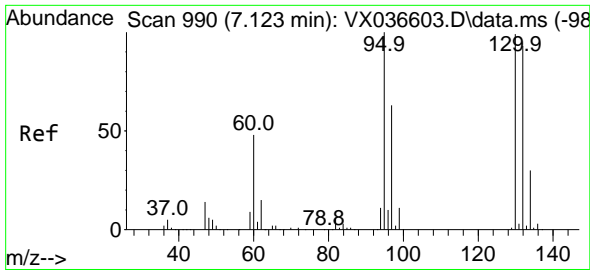
Tgt Ion	Resp	Lower	Upper
75	10607		
110	9.4	17.0	50.9#
77	0.0	24.7	37.1#



#38  
 Carbon Tetrachloride  
 Concen: 5.451 ug/l  
 RT: 5.556 min Scan# 733  
 Delta R.T. -0.122 min  
 Lab File: VX037025.D  
 Acq: 16 Aug 2023 18:12

Tgt Ion	Resp	Lower	Upper
117	14422		
119	5.3	78.2	117.2#
121	0.0	24.4	36.6#

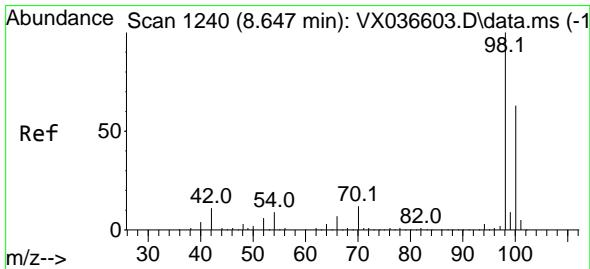
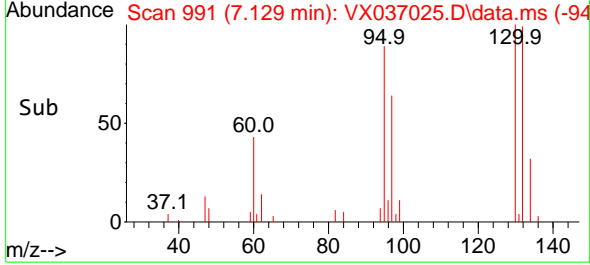
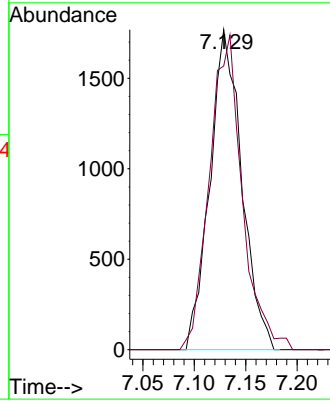
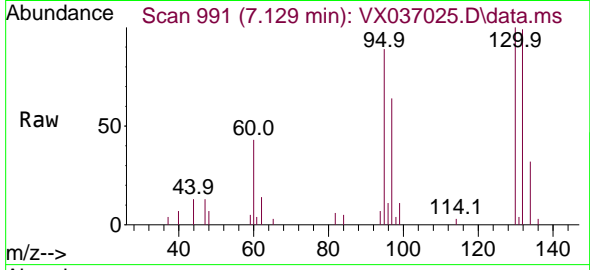




#44  
 Trichloroethene  
 Concen: 2.017 ug/l  
 RT: 7.129 min Scan# 990  
 Delta R.T. 0.006 min  
 Lab File: VX037025.D  
 Acq: 16 Aug 2023 18:12

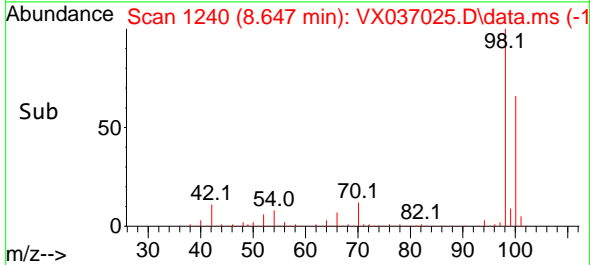
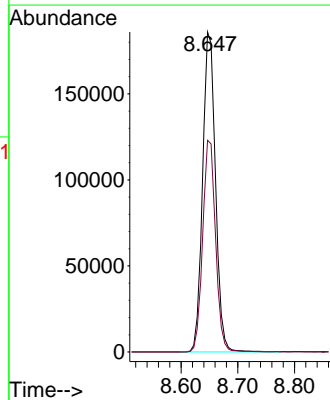
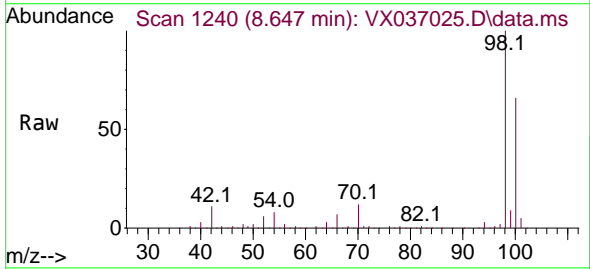
Instrument : MSVOA\_X  
 ClientSampleId : TT14911-20230815

Tgt Ion:130 Resp: 3817  
 Ion Ratio Lower Upper  
 130 100  
 95 88.6 0.0 204.4

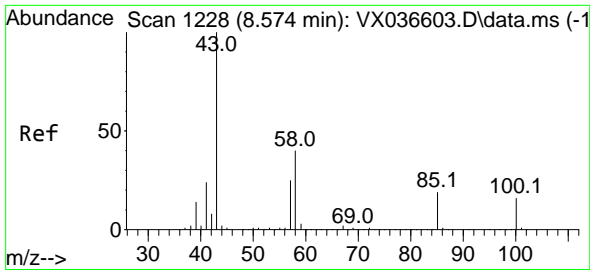


#50  
 Toluene-d8  
 Concen: 49.404 ug/l  
 RT: 8.647 min Scan# 1240  
 Delta R.T. -0.000 min  
 Lab File: VX037025.D  
 Acq: 16 Aug 2023 18:12

Tgt Ion: 98 Resp: 292545  
 Ion Ratio Lower Upper  
 98 100  
 100 66.4 53.1 79.7



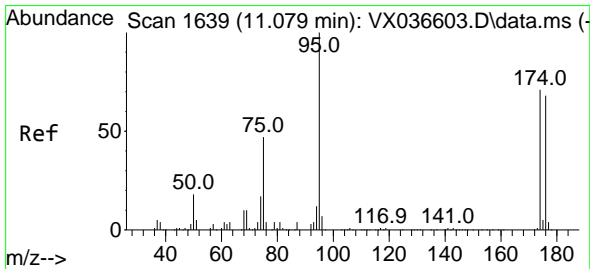
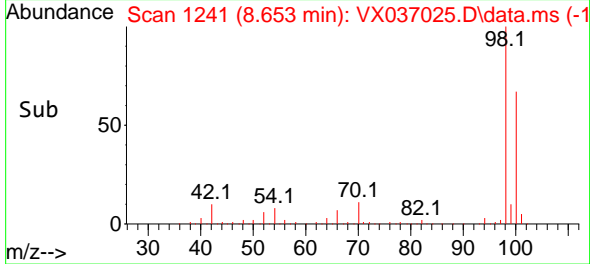
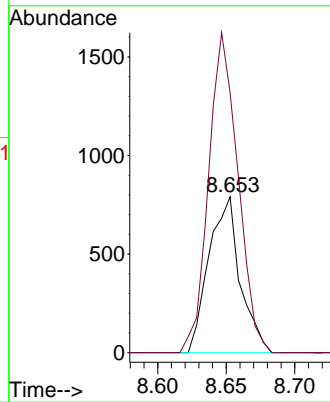
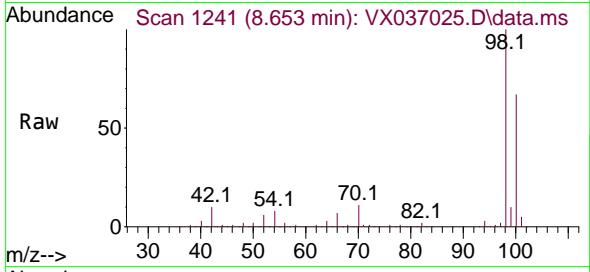




#51  
 4-Methyl-2-Pentanone  
 Concen: 0.467 ug/l  
 RT: 8.653 min Scan# 11  
 Delta R.T. 0.079 min  
 Lab File: VX037025.D  
 Acq: 16 Aug 2023 18:12

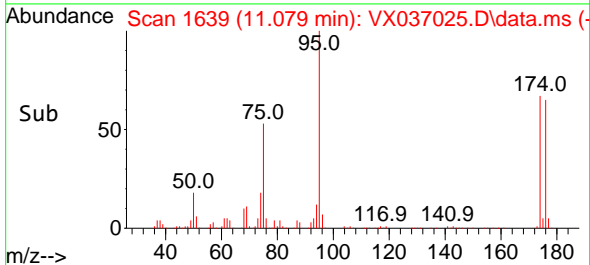
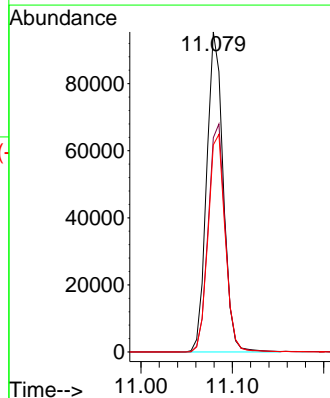
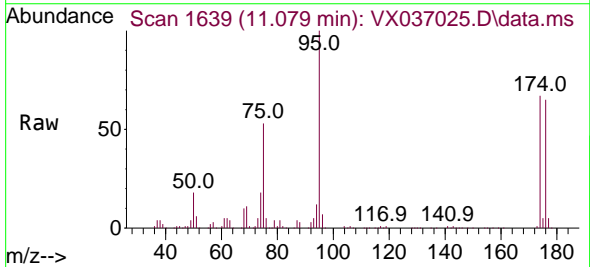
Instrument :  
 MSVOA\_X  
 ClientSampleId :  
 TT14911-20230815

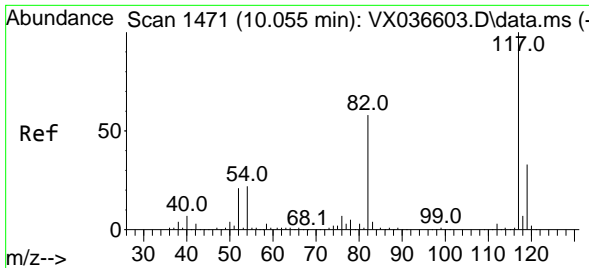
Tgt Ion: 43 Resp: 1254  
 Ion Ratio Lower Upper  
 43 100  
 58 192.8 30.4 45.6#



#62  
 4-Bromofluorobenzene  
 Concen: 53.528 ug/l  
 RT: 11.079 min Scan# 1639  
 Delta R.T. -0.000 min  
 Lab File: VX037025.D  
 Acq: 16 Aug 2023 18:12

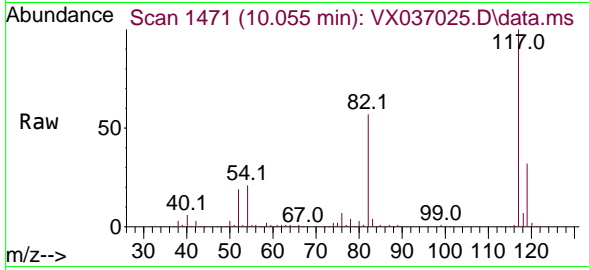
Tgt Ion: 95 Resp: 119585  
 Ion Ratio Lower Upper  
 95 100  
 174 73.2 0.0 135.6  
 176 70.4 0.0 131.0



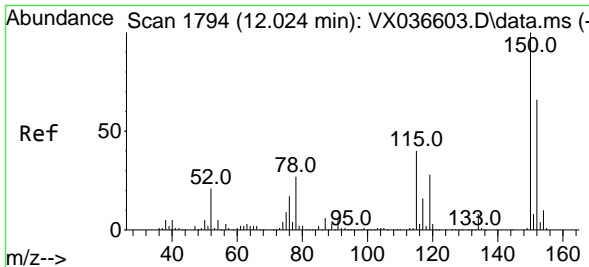
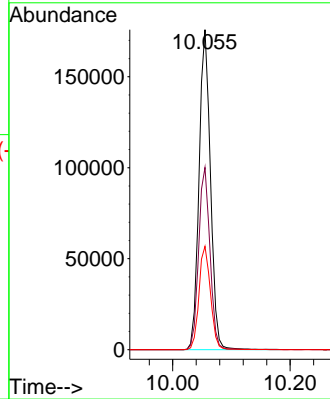
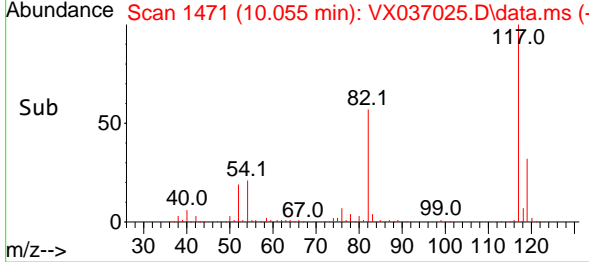


#63  
 Chlorobenzene-d5  
 Concen: 50.000 ug/l  
 RT: 10.055 min Scan# 1471  
 Delta R.T. -0.000 min  
 Lab File: VX037025.D  
 Acq: 16 Aug 2023 18:12

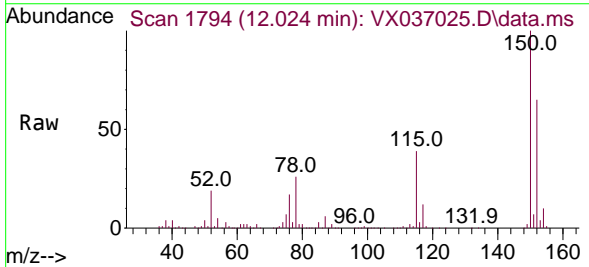
Instrument : MSVOA\_X  
 ClientSampleId : TT14911-20230815



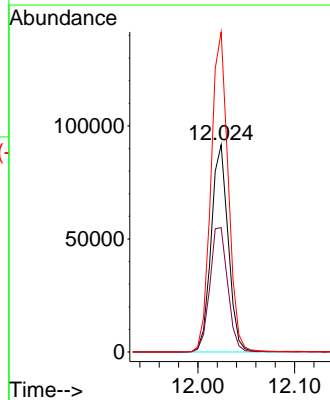
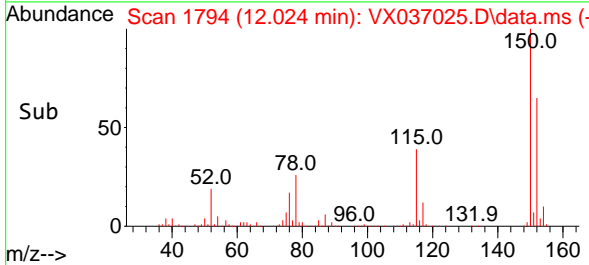
Tgt Ion:117 Resp: 237048  
 Ion Ratio Lower Upper  
 117 100  
 82 56.9 46.2 69.4  
 119 32.3 25.5 38.3

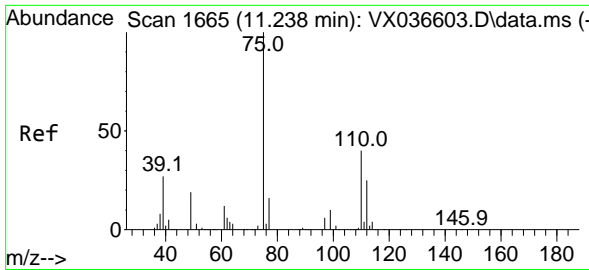


#72  
 1,4-Dichlorobenzene-d4  
 Concen: 50.000 ug/l  
 RT: 12.024 min Scan# 1794  
 Delta R.T. -0.000 min  
 Lab File: VX037025.D  
 Acq: 16 Aug 2023 18:12



Tgt Ion:152 Resp: 112347  
 Ion Ratio Lower Upper  
 152 100  
 115 63.2 43.3 129.9  
 150 156.1 0.0 345.0

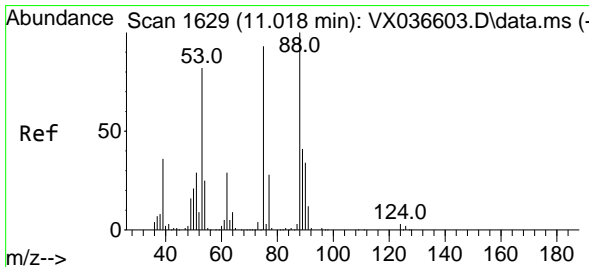
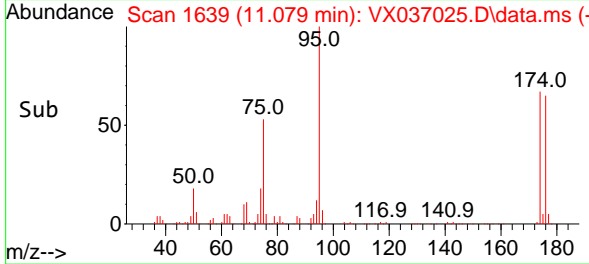
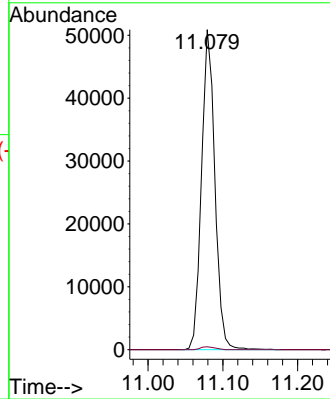
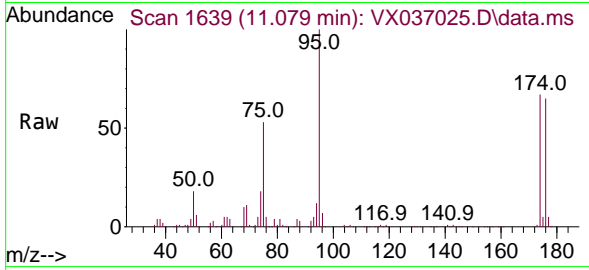




#76  
 1,2,3-Trichloropropane  
 Concen: 23.884 ug/l  
 RT: 11.079 min Scan# 1639  
 Delta R.T. -0.159 min  
 Lab File: VX037025.D  
 Acq: 16 Aug 2023 18:12

Instrument : MSVOA\_X  
 ClientSampleId : TT14911-20230815

Tgt Ion: 75 Resp: 63114  
 Ion Ratio Lower Upper  
 75 100  
 77 1.0 19.1 57.5#



#81  
 trans-1,4-Dichloro-2-butene  
 Concen: 54.134 ug/l  
 RT: 11.079 min Scan# 1639  
 Delta R.T. 0.061 min  
 Lab File: VX037025.D  
 Acq: 16 Aug 2023 18:12

Tgt Ion: 75 Resp: 63114  
 Ion Ratio Lower Upper  
 75 100  
 53 0.0 90.5 135.7#  
 89 0.0 36.9 55.3#

