

Data Path : Z:\VOASRV\HPCHEM1\MSVOA X\DATA\ VX081720\  
 Data File : VX017951.D  
 Acq On : 17 Aug 2020 20:44  
 Operator : JC/SP  
 Sample : VSTDCCC005EC  
 Misc : 25.0mL/MSVOA X/WATER  
 ALS Vial : 24 Sample Multiplier: 1

Instrument :  
 MSVOA\_X  
 ClientSampleId :

Quant Time: Aug 18 01:03:02 2020  
 Quant Method : Z:\VOASRV\HPCHEM1\MSVOA\_X\METHOD\SOMXTR080720WMA.M  
 Quant Title : TRACE VOA SOM01.0  
 QLast Update : Tue Aug 18 00:59:21 2020  
 Response via : Initial Calibration

Internal Standards	R.T.	QIon	Response	Conc	Units	Dev(Min)
1) 1,4-Difluorobenzene	6.84	114	252210	5.00	ug/L	0.00
28) Chlorobenzene-d5	10.10	117	237215	5.00	ug/L	0.00
61) 1,4-Dichlorobenzene-d4	12.06	152	134001	5.00	ug/L	0.00

System Monitoring Compounds

4) Vinyl Chloride-d3	1.39	65	83395	4.78	ug/L	0.00
Spiked Amount	5.000	Range	40 - 130	Recovery	=	95.60%
7) Chloroethane-d5	1.69	69	71919	5.20	ug/L	0.00
Spiked Amount	5.000	Range	65 - 130	Recovery	=	104.00%
11) 1,1-Dichloroethene-d2	2.34	63	188814	5.26	ug/L	0.00
Spiked Amount	5.000	Range	60 - 125	Recovery	=	105.20%
20) 2-Butanone-d5	4.53	46	253362	54.74	ug/L	0.00
Spiked Amount	50.000	Range	40 - 130	Recovery	=	109.48%
24) Chloroform-d	5.14	84	183912	5.20	ug/L	0.00
Spiked Amount	5.000	Range	70 - 125	Recovery	=	104.00%
26) 1,2-Dichloroethane-d4	6.03	65	100947	5.20	ug/L	0.00
Spiked Amount	5.000	Range	70 - 130	Recovery	=	104.00%
32) Benzene-d6	6.04	84	321115	4.93	ug/L	0.00
Spiked Amount	5.000	Range	70 - 125	Recovery	=	98.60%
36) 1,2-Dichloropropane-d6	7.37	67	115171	5.72	ug/L	0.00
Spiked Amount	5.000	Range	60 - 140	Recovery	=	114.40%
41) Toluene-d8	8.70	98	335361	5.41	ug/L	0.00
Spiked Amount	5.000	Range	70 - 130	Recovery	=	108.20%
45) trans-1,3-Dichloropropene-	8.99	79	47267	5.42	ug/L	0.00
Spiked Amount	5.000	Range	55 - 130	Recovery	=	108.40%
48) 2-Hexanone-d5	9.43	63	196908	54.34	ug/L	0.00
Spiked Amount	50.000	Range	45 - 130	Recovery	=	108.68%
59) 1,1,2,2-Tetrachloroethane-	11.23	84	81127	5.30	ug/L	0.00
Spiked Amount	5.000	Range	65 - 120	Recovery	=	106.00%
65) 1,2-Dichlorobenzene-d4	12.36	152	126390	4.90	ug/L	0.00
Spiked Amount	5.000	Range	80 - 120	Recovery	=	98.00%

Target Compounds

Target Compounds	R.T.	QIon	Response	Conc	Units	Ovalue
2) Dichlorodifluoromethane	1.18	85	133372	4.548	ug/L	97
3) Chloromethane	1.31	50	133810	5.588	ug/L	99
5) Vinyl chloride	1.39	62	136684	5.754	ug/L	98
6) Bromomethane	1.63	94	83993	6.076	ug/L	92
8) Chloroethane	1.71	64	79684	5.997	ug/L	98
9) Trichlorofluoromethane	1.92	101	223629	5.850	ug/L	98
10) 1,1,2-Trichloro-1,2,2-trif	2.37	101	125868	6.033	ug/L	98
12) 1,1-Dichloroethene	2.35	96	119019	6.157	ug/L	89
13) Acetone	2.42	43	178652	52.831	ug/L	99
14) Carbon disulfide	2.55	76	324581	4.675	ug/L	100
15) Methyl Acetate	2.75	43	48990	4.914	ug/L	97
16) Methylene chloride	2.83	84	124747	4.672	ug/L	96
17) Methyl tert-butyl Ether	3.17	73	270046	5.217	ug/L	98
18) trans-1,2-Dichloroethene	3.14	96	116353	5.304	ug/L	99
19) 1,1-Dichloroethane	3.67	63	219428	5.608	ug/L	98
21) 2-Butanone	4.63	43	294189	50.372	ug/L	97
22) cis-1,2-Dichloroethene	4.57	96	120040	5.215	ug/L #	99

Data Path : Z:\VOASRV\HPCHEM1\MSVOA X\DATA\VX081720\  
 Data File : VX017951.D  
 Acq On : 17 Aug 2020 20:44  
 Operator : JC/SP  
 Sample : VSTDCCC005EC  
 Misc : 25.0mL/MSVOA X/WATER  
 ALS Vial : 24 Sample Multiplier: 1

Instrument :  
 MSVOA\_X  
 ClientSampleId :

Quant Time: Aug 18 01:03:02 2020  
 Quant Method : Z:\VOASRV\HPCHEM1\MSVOA\_X\METHOD\SOMXTR080720WMA.M  
 Quant Title : TRACE VOA SOM01.0  
 QLast Update : Tue Aug 18 00:59:21 2020  
 Response via : Initial Calibration

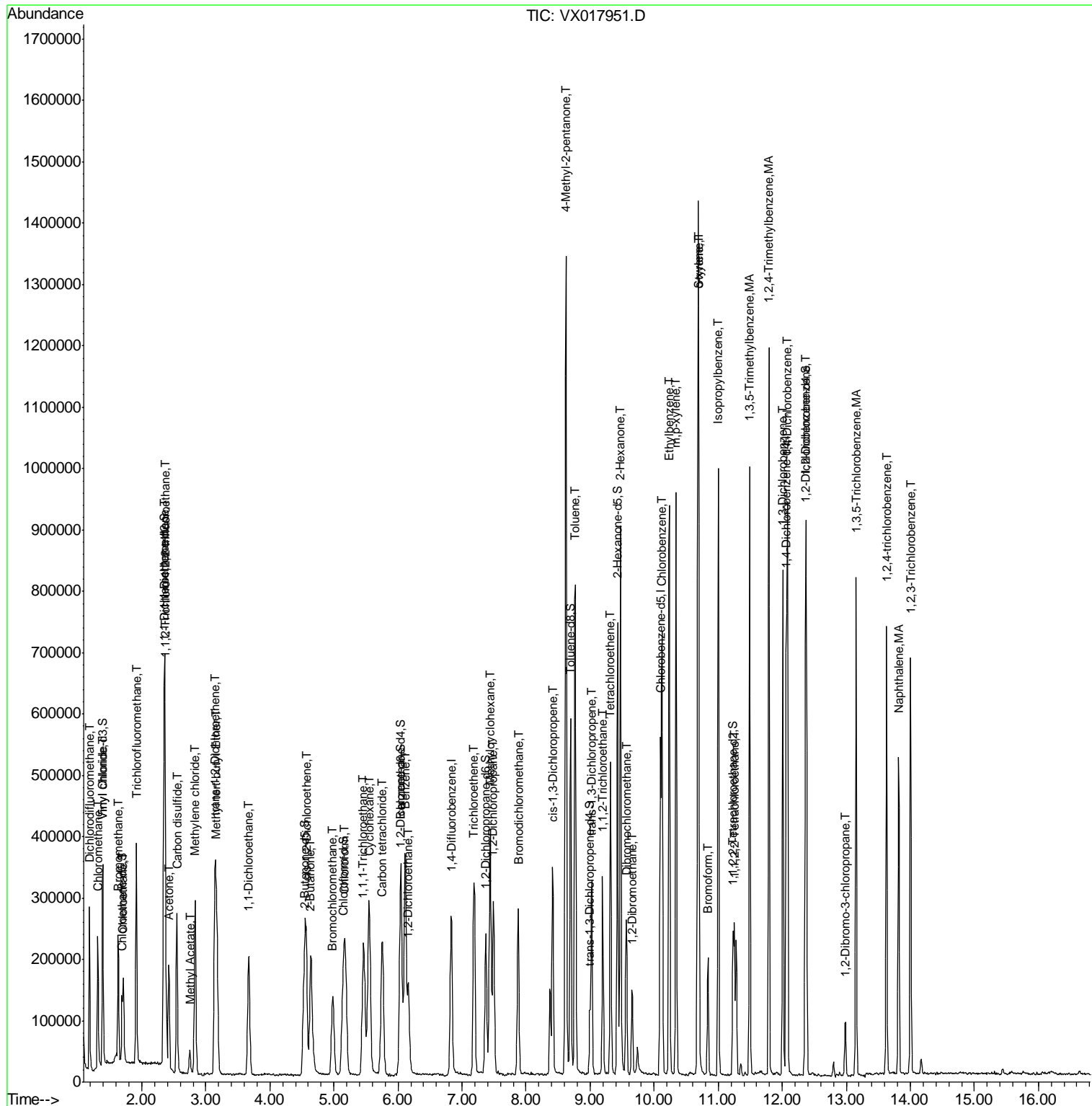
Internal Standards	R.T.	QIon	Response	Conc	Units	Dev(Min)
23) Bromochloromethane	4.98	128	59505	5.524	ug/L	91
25) Chloroform	5.17	83	234901	5.574	ug/L	99
27) 1,2-Dichloroethane	6.16	62	148324	5.487	ug/L	99
29) 1,1,1-Trichloroethane	5.46	97	221600	5.694	ug/L	99
30) Cyclohexane	5.55	56	178767	5.294	ug/L	98
31) Carbon tetrachloride	5.76	117	204632	5.705	ug/L	99
33) Benzene	6.12	78	437313	5.207	ug/L	100
34) Trichloroethene	7.19	95	123598	5.042	ug/L	94
35) Methylcyclohexane	7.44	83	161310	4.681	ug/L	96
37) 1,2-Dichloropropane	7.49	63	111817	5.295	ug/L	100
38) Bromodichloromethane	7.88	83	176756	6.008	ug/L	93
39) cis-1,3-Dichloropropene	8.41	75	172875	5.317	ug/L	97
40) 4-Methyl-2-pentanone	8.62	43	765343	55.663	ug/L	99
42) Toluene	8.77	91	526916	5.780	ug/L	97
43) 1,3,5-Trimethylbenzene	11.49	105	420538	5.054	ug/L	99
44) 1,2,4-Trimethylbenzene	11.79	105	451470	5.328	ug/L	99
46) trans-1,3-Dichloropropene	9.02	75	148519	5.121	ug/L	99
47) 1,1,2-Trichloroethane	9.20	97	87188	5.502	ug/L	98
49) Tetrachloroethene	9.32	164	103602	5.283	ug/L	95
50) 2-Hexanone	9.48	43	480187	48.723	ug/L	98
51) Dibromochloromethane	9.57	129	116949	5.358	ug/L	95
52) 1,2-Dibromoethane	9.65	107	77952	5.025	ug/L #	93
53) Chlorobenzene	10.12	112	310962	5.240	ug/L	96
54) Ethylbenzene	10.24	91	524490	5.272	ug/L	98
55) m,p-xylene	10.34	106	203745	5.363	ug/L	95
56) o-xylene	10.68	106	212256	5.763	ug/L	96
57) Styrene	10.69	104	372617	5.982	ug/L	95
58) Isopropylbenzene	11.01	105	511556	5.189	ug/L	99
60) 1,1,2,2-Tetrachloroethane	11.26	83	89010	5.115	ug/L	99
62) Bromoform	10.84	173	66288	4.946	ug/L	100
63) 1,3-Dichlorobenzene	12.01	146	264482	5.068	ug/L	98
64) 1,4-Dichlorobenzene	12.08	146	273453	5.267	ug/L	96
66) 1,2-Dichlorobenzene	12.38	146	236665	4.882	ug/L	98
67) 1,2-Dibromo-3-chloropropan	12.99	75	19661	4.669	ug/L	91
68) 1,3,5-Trichlorobenzene	13.15	180	195133	5.063	ug/L	94
69) 1,2,4-trichlorobenzene	13.63	180	175289	5.138	ug/L	97
70) Naphthalene	13.82	128	309784	4.943	ug/L	99
71) 1,2,3-Trichlorobenzene	14.01	180	167861	5.229	ug/L	100

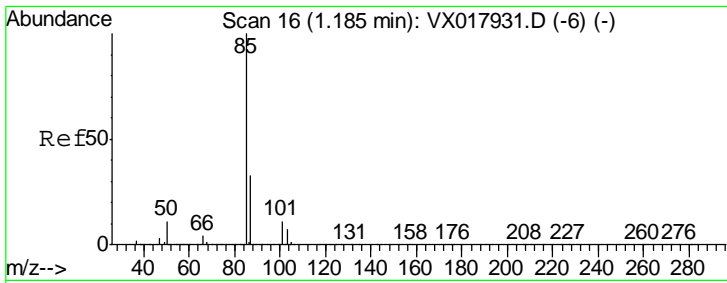
(#) = qualifier out of range (m) = manual integration (+) = signals summed

Data Path : Z:\VOASRV\HPCHEM1\MSVOA X\DATA\VX081720\  
 Data File : VX017951.D  
 Acq On : 17 Aug 2020 20:44  
 Operator : JC/SP  
 Sample : VSTDCCC005EC  
 Misc : 25.0mL/MSVOA X/WATER  
 ALS Vial : 24 Sample Multiplier: 1

Instrument :  
 MSVOA\_X  
 Client Sampled :

Quant Time: Aug 18 01:03:02 2020  
 Quant Method : Z:\VOASRV\HPCHEM1\MSVOA\_X\METHOD\SOMXTR080720WMA.M  
 Quant Title : TRACE VOA SOM01.0  
 QLast Update : Tue Aug 18 00:59:21 2020  
 Response via : Initial Calibration

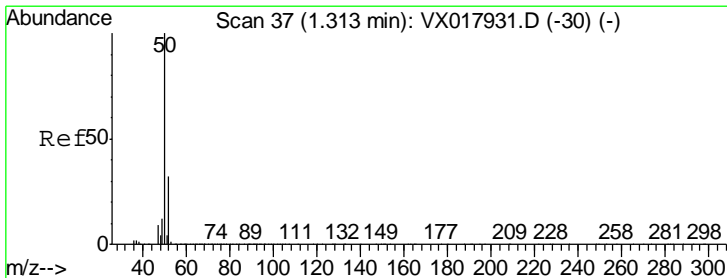
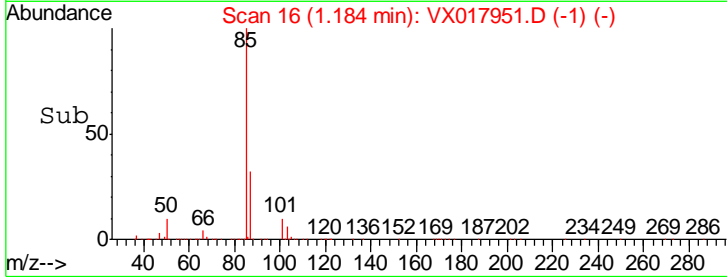
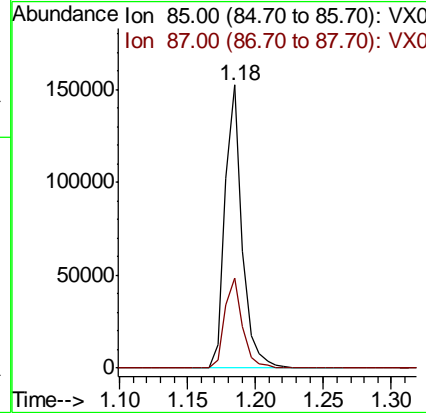
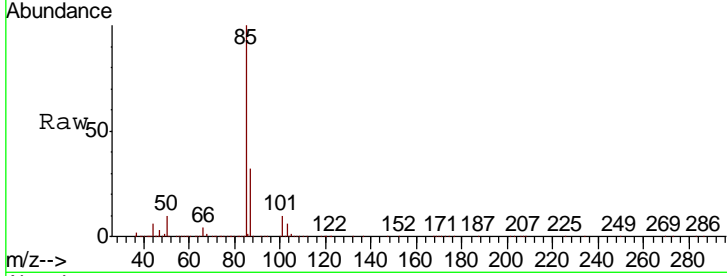




#2  
 Dichlorodifluoromethane  
 Concen: 4.548 ug/L  
 RT: 1.18 min Scan# 16  
 Delta R.T. -0.00 min  
 Lab File: VX017951.D  
 Acq: 17 Aug 2020 20:44

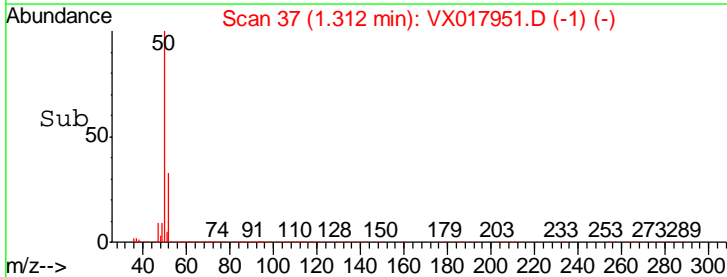
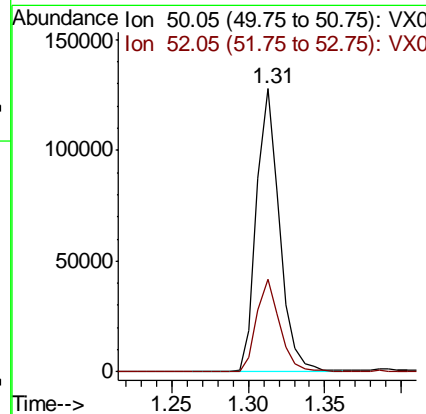
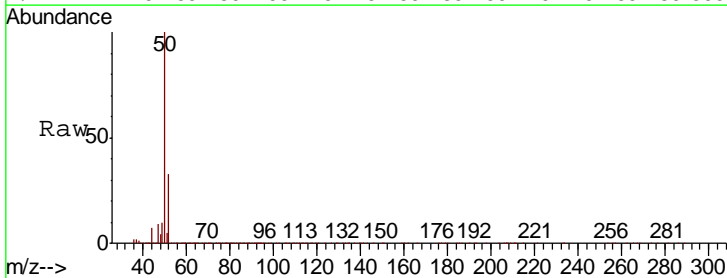
Instrument :  
 MSVOA\_X  
 ClientSampled :

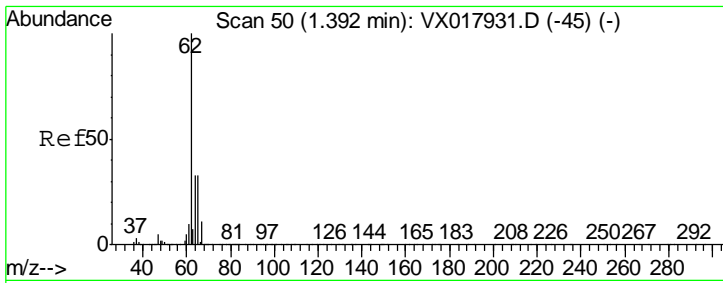
Tgt Ion: 85 Resp: 133372  
 Ion Ratio Lower Upper  
 85 100  
 87 33.3 25.2 37.8



#3  
 Chloromethane  
 Concen: 5.588 ug/L  
 RT: 1.31 min Scan# 37  
 Delta R.T. -0.00 min  
 Lab File: VX017951.D  
 Acq: 17 Aug 2020 20:44

Tgt Ion: 50 Resp: 133810  
 Ion Ratio Lower Upper  
 50 100  
 52 32.6 22.5 41.9

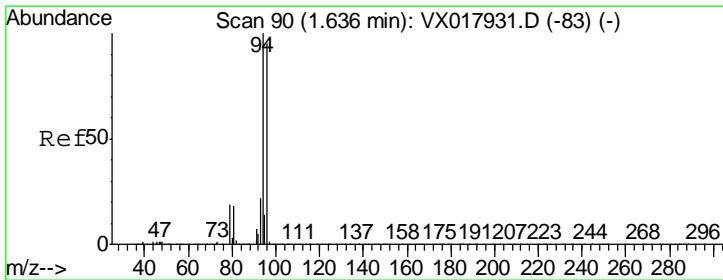
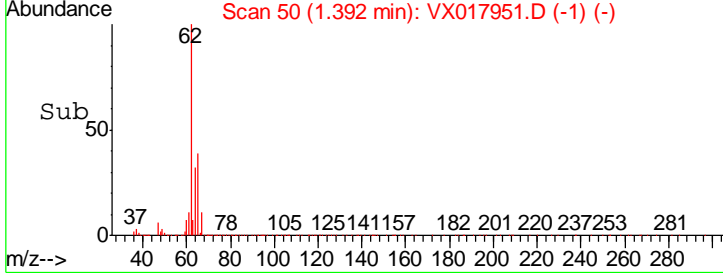
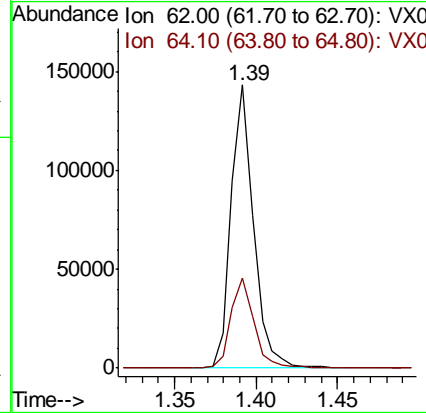
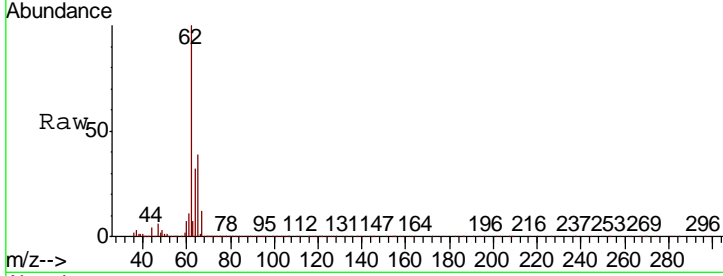




#5  
 Vinyl chloride  
 Concen: 5.754 ug/L  
 RT: 1.39 min Scan# 50  
 Delta R.T. -0.00 min  
 Lab File: VX017951.D  
 Acq: 17 Aug 2020 20:44

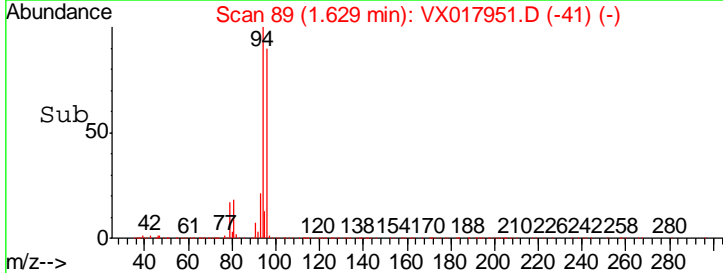
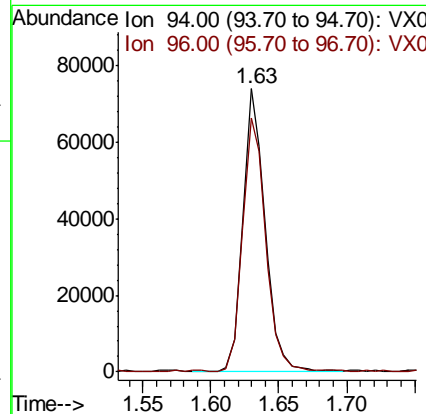
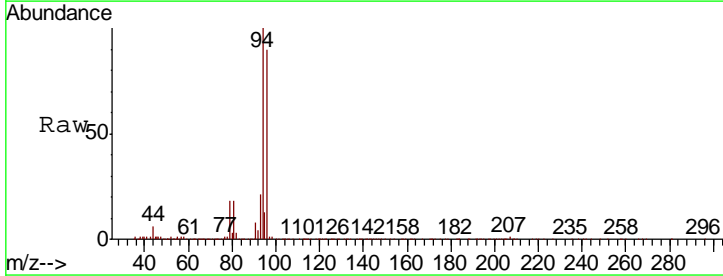
Instrument :  
 MSVOA\_X  
 ClientSampled :

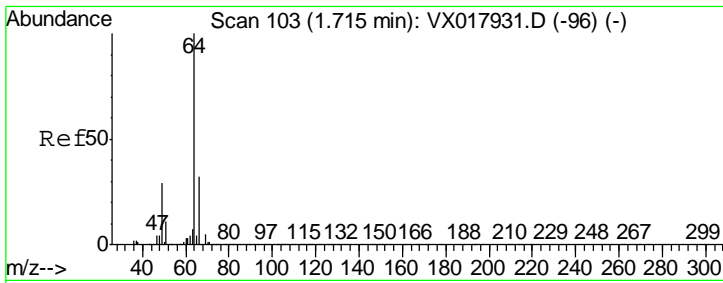
Tgt Ion	Resp	Lower	Upper
62	136684		
64	31.8	21.3	39.6



#6  
 Bromomethane  
 Concen: 6.076 ug/L  
 RT: 1.63 min Scan# 89  
 Delta R.T. -0.01 min  
 Lab File: VX017951.D  
 Acq: 17 Aug 2020 20:44

Tgt Ion	Resp	Lower	Upper
94	83993		
96	89.9	68.5	127.1

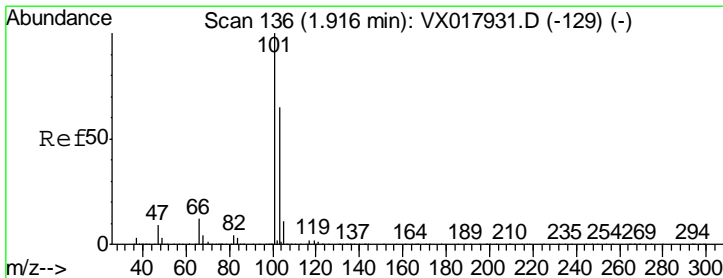
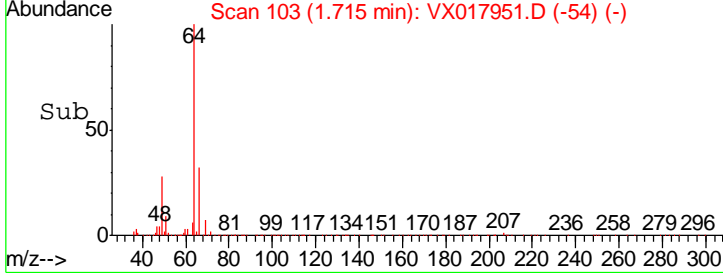
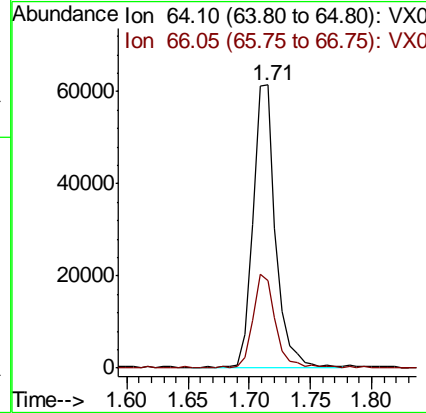
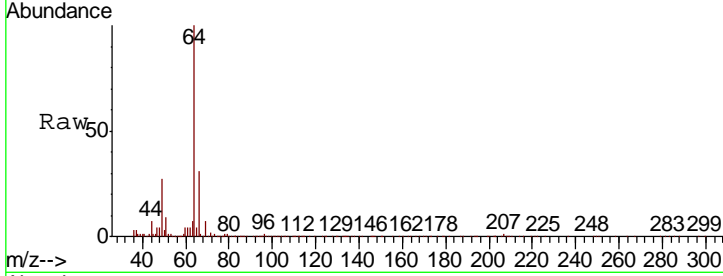




#8  
 Chloroethane  
 Concen: 5.997 ug/L  
 RT: 1.71 min Scan# 103  
 Delta R.T. -0.00 min  
 Lab File: VX017951.D  
 Acq: 17 Aug 2020 20:44

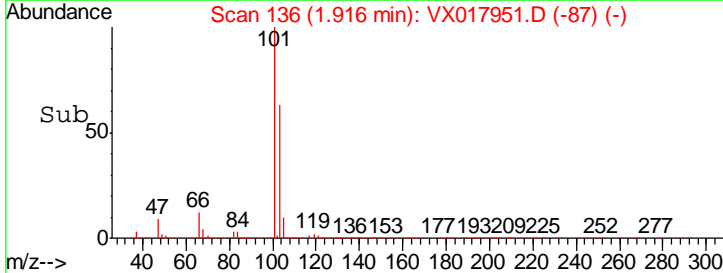
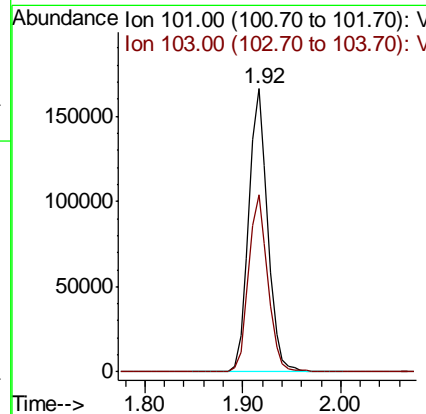
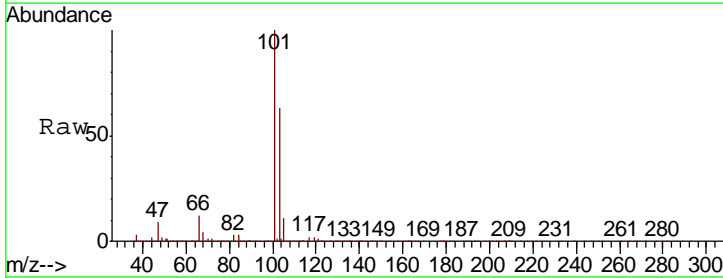
Instrument :  
 MSVOA\_X  
 ClientSampled :

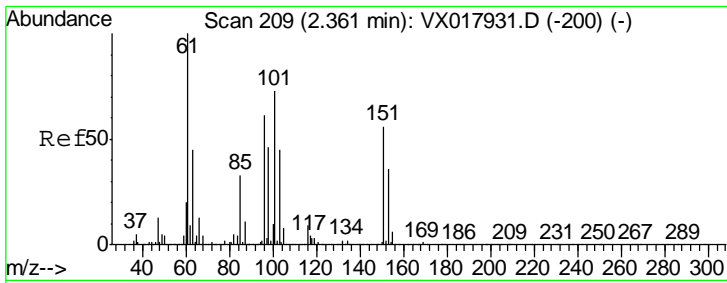
Tgt Ion	Resp	Lower	Upper
64	100		
66	31.1	22.6	42.0



#9  
 Trichlorofluoromethane  
 Concen: 5.850 ug/L  
 RT: 1.92 min Scan# 136  
 Delta R.T. -0.00 min  
 Lab File: VX017951.D  
 Acq: 17 Aug 2020 20:44

Tgt Ion	Resp	Lower	Upper
101	100		
103	63.5	52.0	78.0

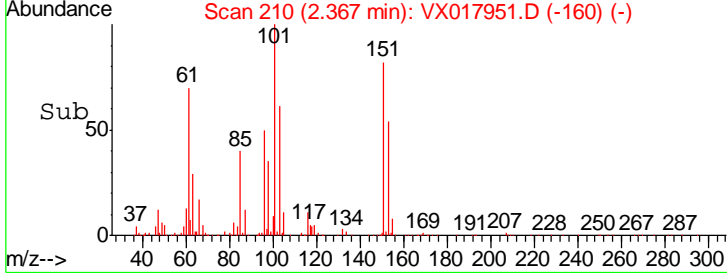
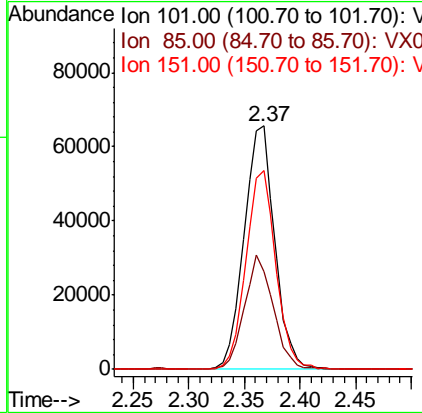
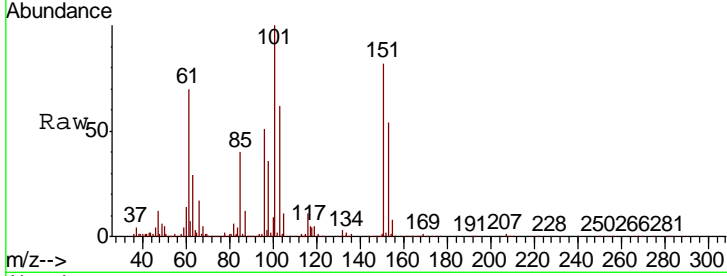




#10  
 1,1,2-Trichloro-1,2,2-trifluoroethane  
 Concen: 6.033 ug/L  
 RT: 2.37 min Scan# 210  
 Delta R.T. 0.01 min  
 Lab File: VX017951.D  
 Acq: 17 Aug 2020 20:44

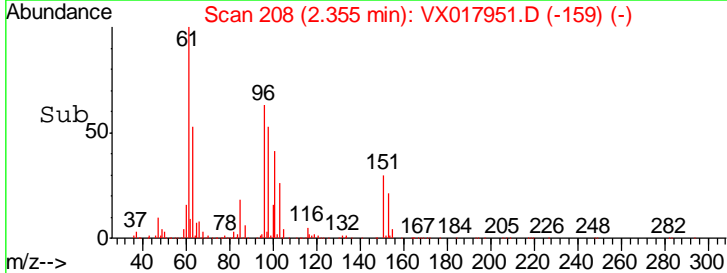
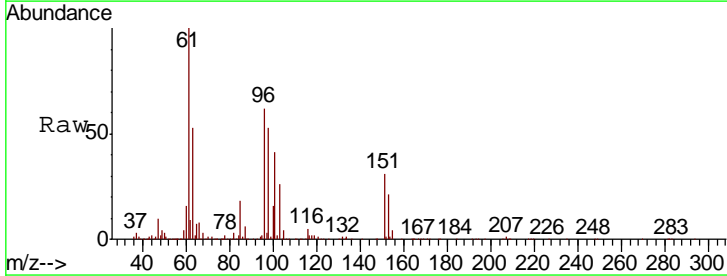
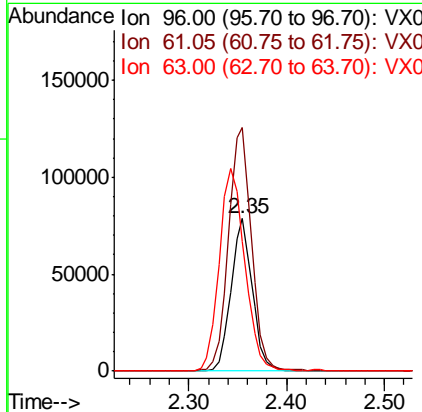
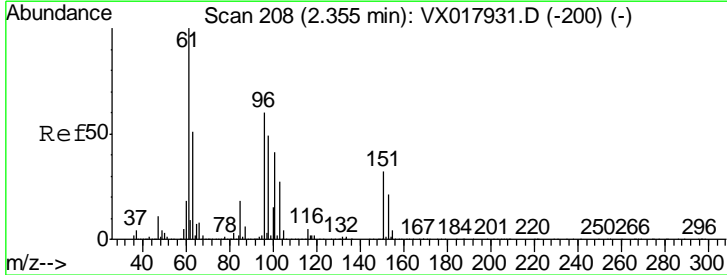
Instrument :  
 MSVOA\_X  
 ClientSampled :

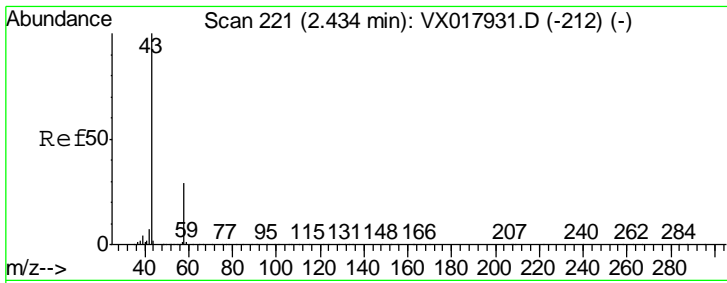
Tgt Ion	Resp	Lower	Upper
101	125868		
85	44.6	34.3	51.5
151	80.0	64.8	97.2



#12  
 1,1-Dichloroethene  
 Concen: 6.157 ug/L  
 RT: 2.35 min Scan# 208  
 Delta R.T. -0.00 min  
 Lab File: VX017951.D  
 Acq: 17 Aug 2020 20:44

Tgt Ion	Resp	Lower	Upper
96	119019		
61	160.0	123.5	229.3
63	85.3	67.0	124.4

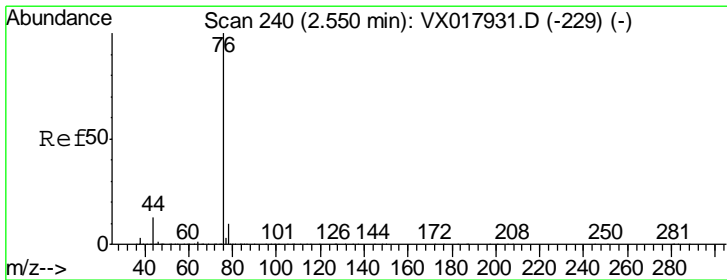
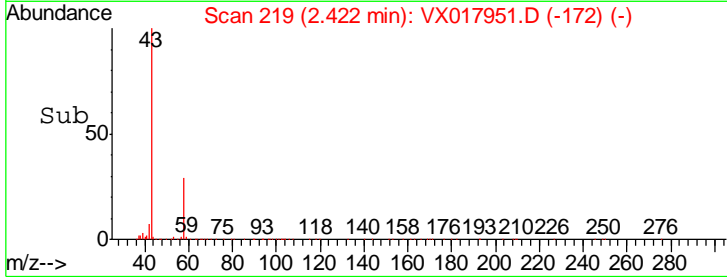
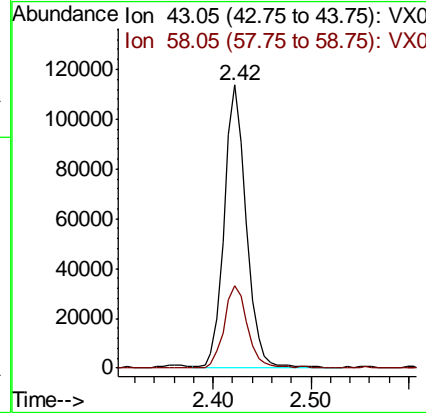
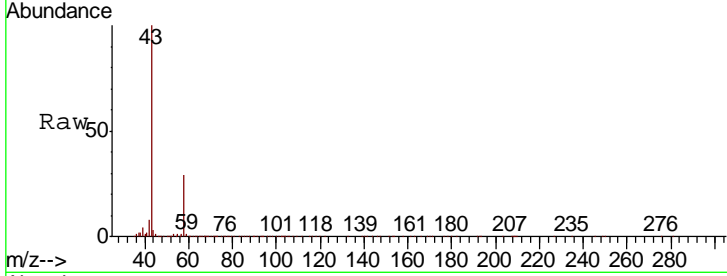




#13  
 Acetone  
 Concen: 52.831 ug/L  
 RT: 2.42 min Scan# 219  
 Delta R.T. -0.01 min  
 Lab File: VX017951.D  
 Acq: 17 Aug 2020 20:44

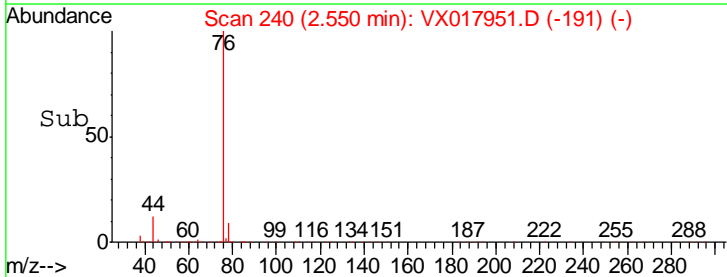
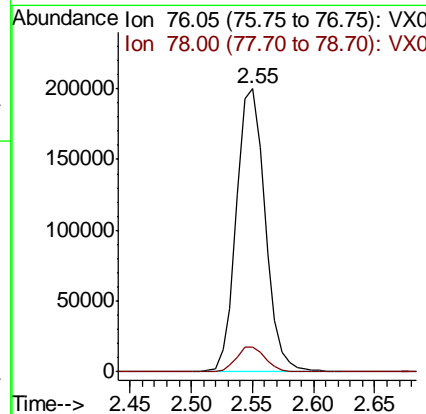
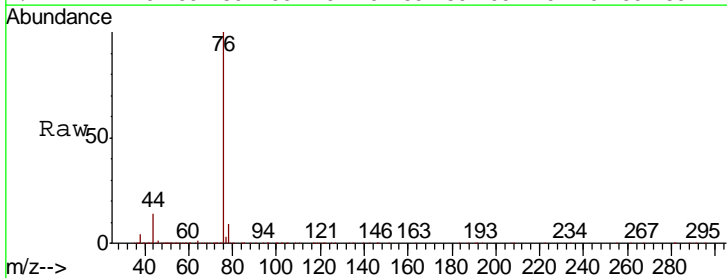
Instrument :  
 MSVOA\_X  
 ClientSampled :

Tgt Ion	Resp	Lower	Upper
43	178652		
58	30.7	0.0	60.8

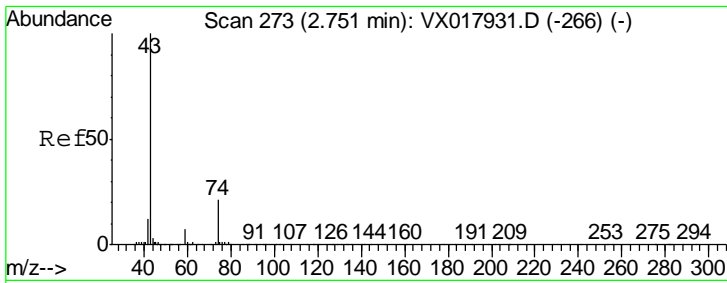


#14  
 Carbon disulfide  
 Concen: 4.675 ug/L  
 RT: 2.55 min Scan# 240  
 Delta R.T. -0.00 min  
 Lab File: VX017951.D  
 Acq: 17 Aug 2020 20:44

Tgt Ion	Resp	Lower	Upper
76	324581		
78	8.7	7.0	10.4



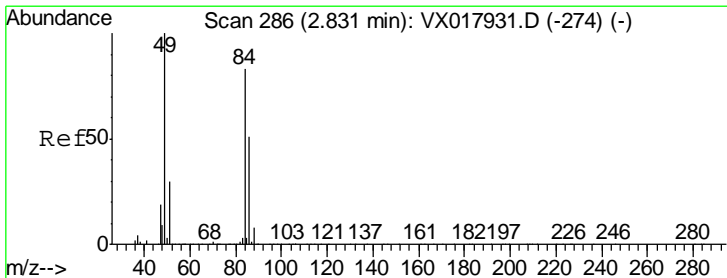
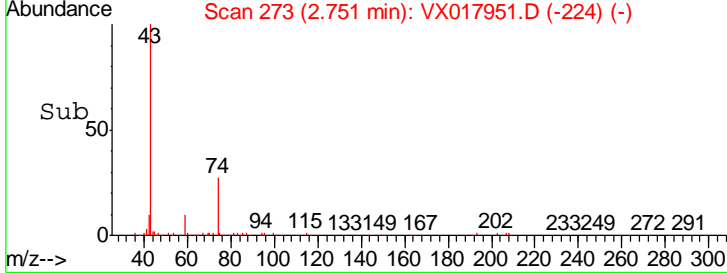
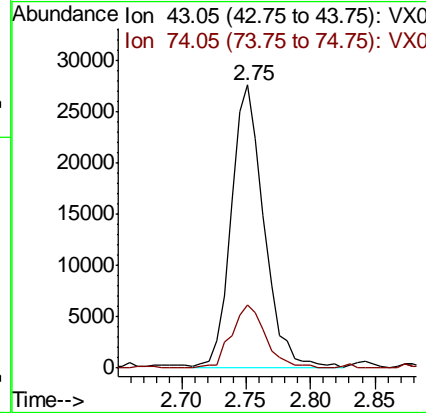
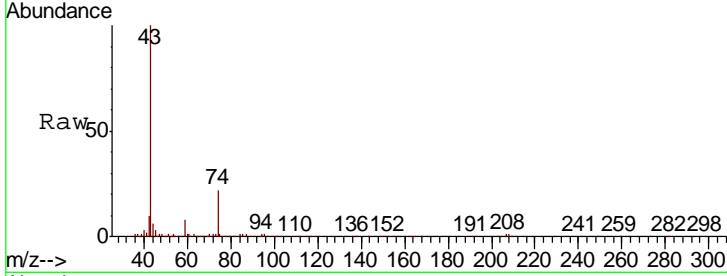




#15  
 Methyl Acetate  
 Concen: 4.914 ug/L  
 RT: 2.75 min Scan# 273  
 Delta R.T. -0.00 min  
 Lab File: VX017951.D  
 Acq: 17 Aug 2020 20:44

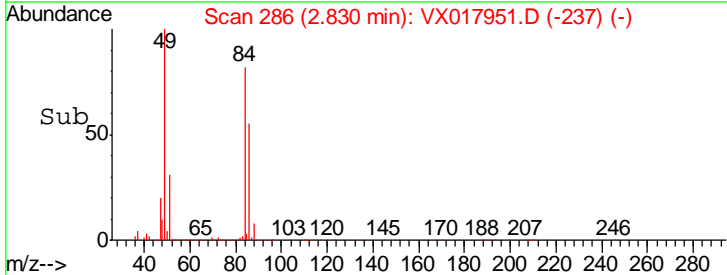
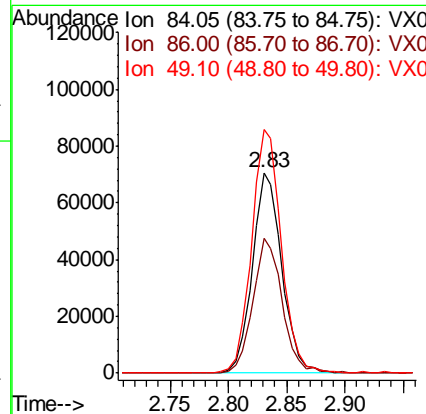
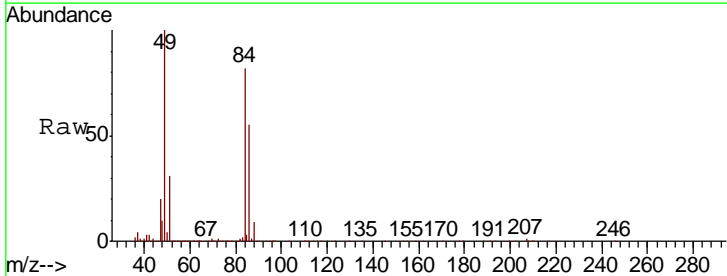
Instrument :  
 MSVOA\_X  
 ClientSampled :

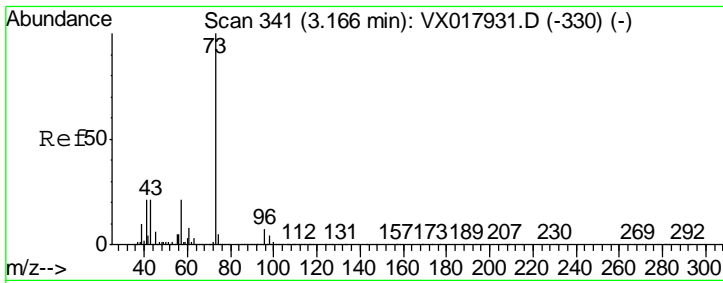
Tgt Ion	Resp	Lower	Upper
43	48990		
74	23.8	20.4	30.6



#16  
 Methylene chloride  
 Concen: 4.672 ug/L  
 RT: 2.83 min Scan# 286  
 Delta R.T. -0.00 min  
 Lab File: VX017951.D  
 Acq: 17 Aug 2020 20:44

Tgt Ion	Resp	Lower	Upper
84	124747		
86	67.0	43.0	80.0
49	121.6	86.9	161.3

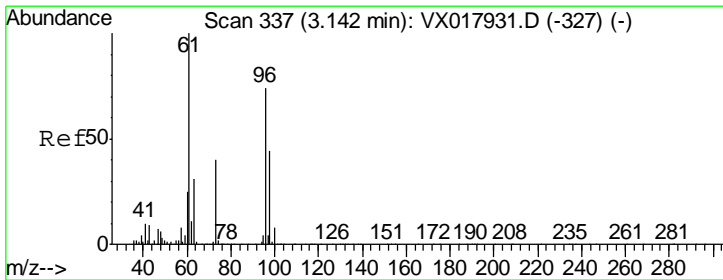
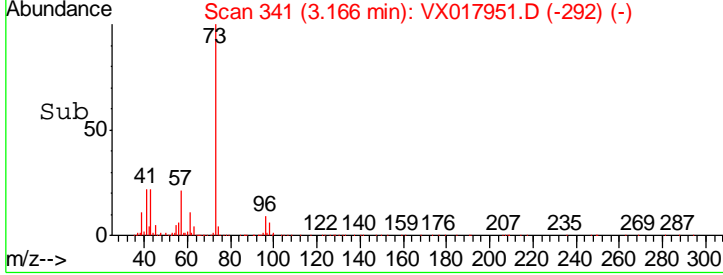
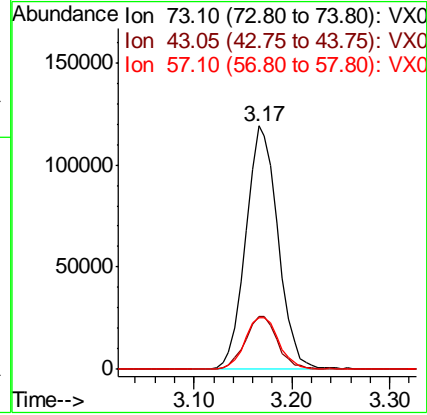
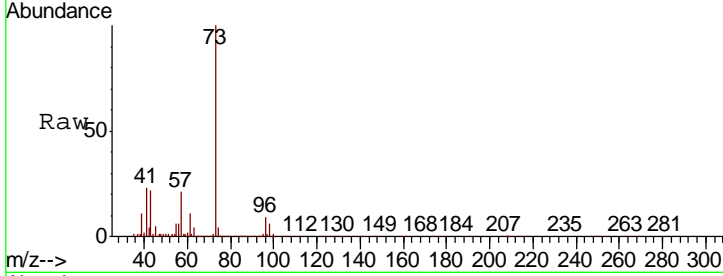




#17  
 Methyl tert-butyl Ether  
 Concen: 5.217 ug/L  
 RT: 3.17 min Scan# 341  
 Delta R.T. -0.00 min  
 Lab File: VX017951.D  
 Acq: 17 Aug 2020 20:44

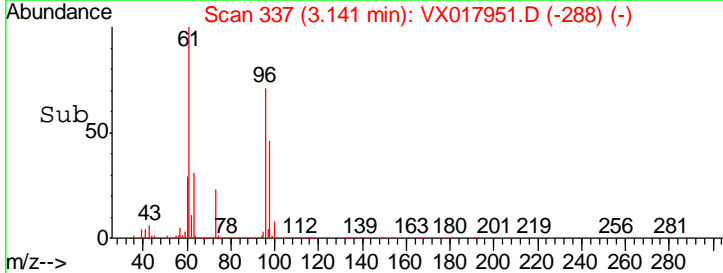
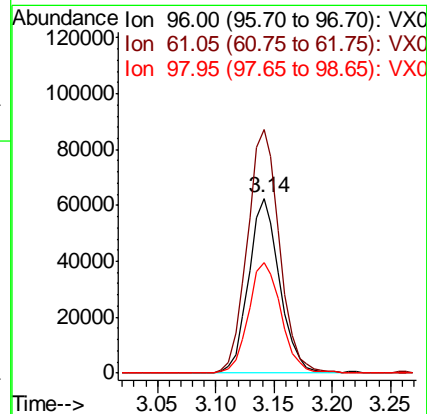
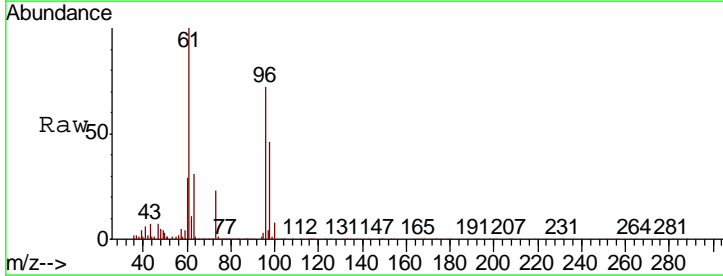
Instrument :  
 MSVOA\_X  
 ClientSampled :

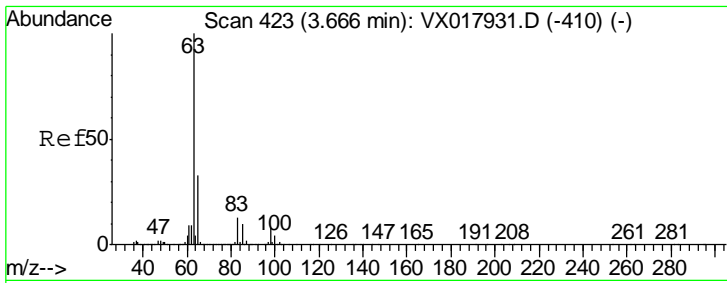
Tgt Ion	Resp	Lower	Upper
73	270046		
43	21.7	17.7	26.5
57	22.4	17.0	25.6



#18  
 trans-1,2-Dichloroethene  
 Concen: 5.304 ug/L  
 RT: 3.14 min Scan# 337  
 Delta R.T. -0.00 min  
 Lab File: VX017951.D  
 Acq: 17 Aug 2020 20:44

Tgt Ion	Resp	Lower	Upper
96	116353		
61	139.5	98.4	182.8
98	63.7	44.9	83.5

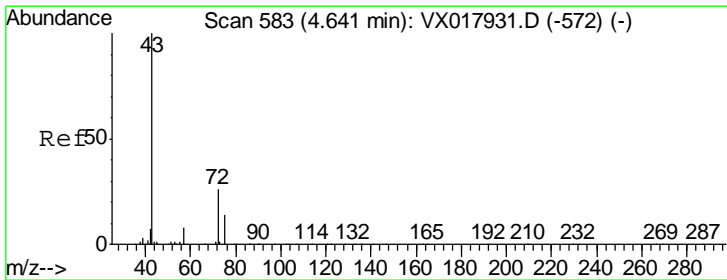
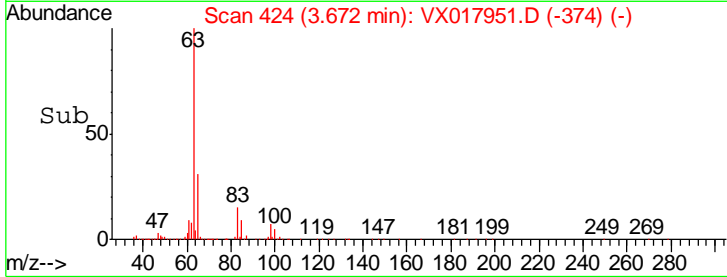
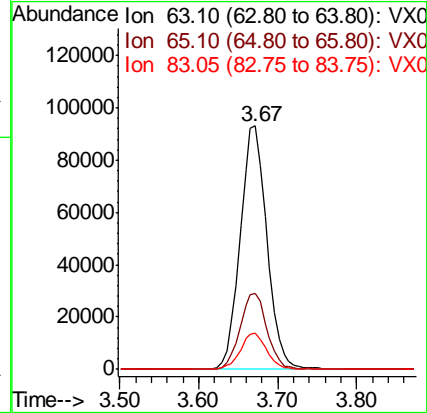
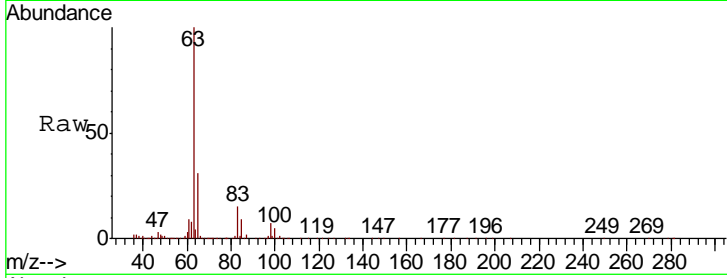




#19  
 1,1-Dichloroethane  
 Concen: 5.608 ug/L  
 RT: 3.67 min Scan# 424  
 Delta R.T. 0.01 min  
 Lab File: VX017951.D  
 Acq: 17 Aug 2020 20:44

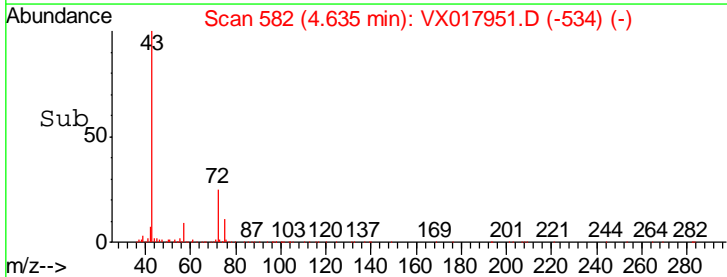
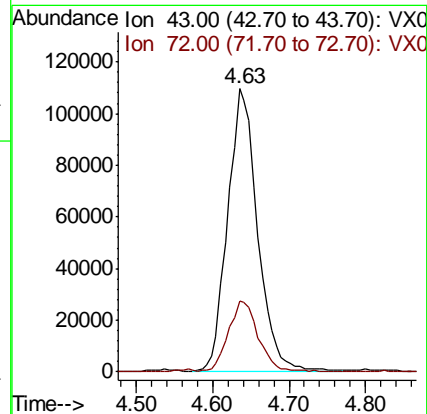
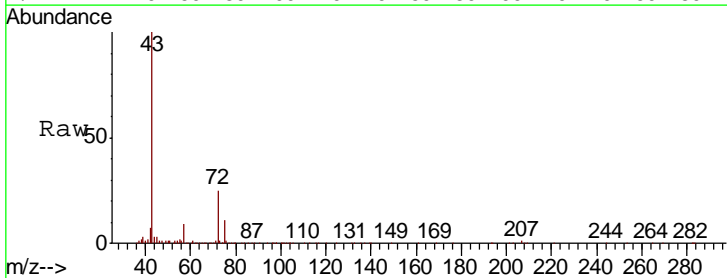
Instrument :  
 MSVOA\_X  
 ClientSampled :

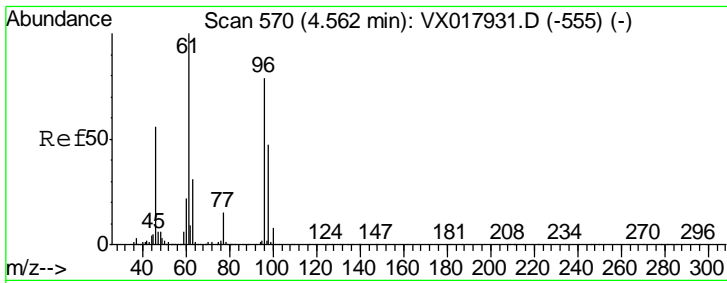
Tgt Ion	Resp	Lower	Upper
63	100		
65	31.4	22.6	42.0
83	15.0	9.5	17.7



#21  
 2-Butanone  
 Concen: 50.372 ug/L  
 RT: 4.63 min Scan# 582  
 Delta R.T. -0.01 min  
 Lab File: VX017951.D  
 Acq: 17 Aug 2020 20:44

Tgt Ion	Resp	Lower	Upper
43	100		
72	24.9	13.2	39.6

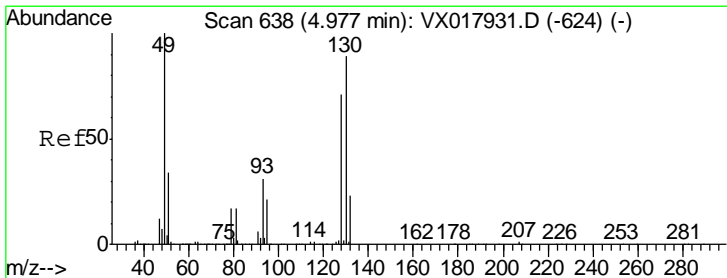
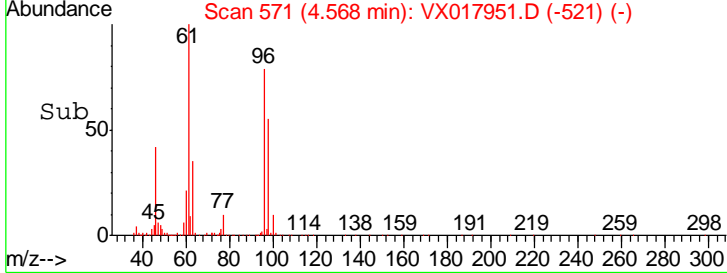
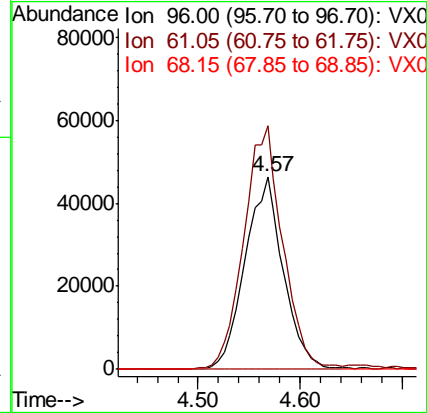
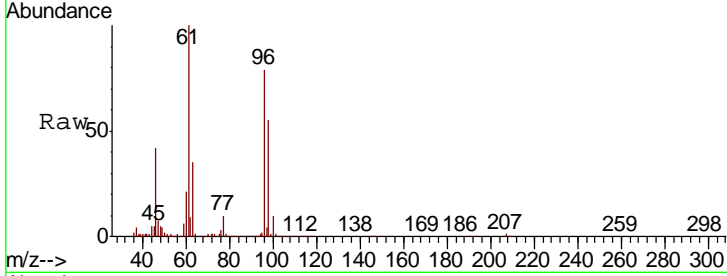




#22  
 cis-1,2-Dichloroethene  
 Concen: 5.215 ug/L  
 RT: 4.57 min Scan# 571  
 Delta R.T. 0.01 min  
 Lab File: VX017951.D  
 Acq: 17 Aug 2020 20:44

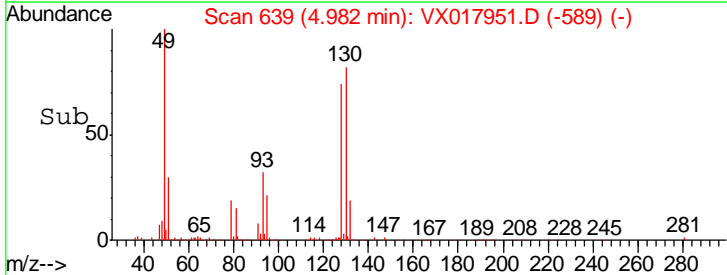
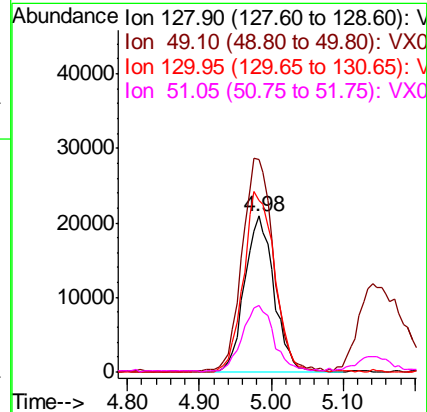
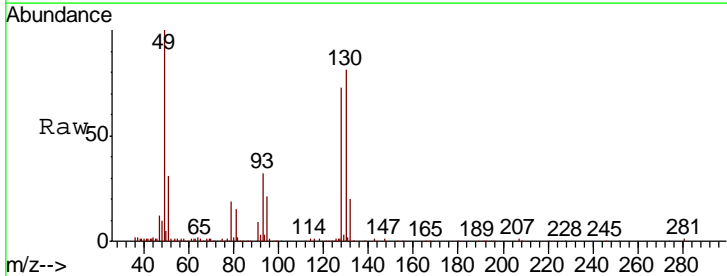
Instrument : MSVOA\_X  
 ClientSampled :

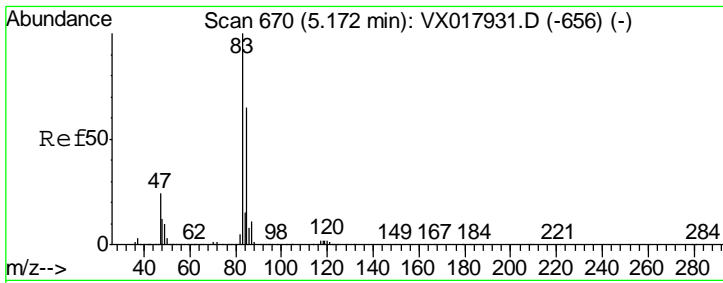
Tgt Ion	Resp	Lower	Upper
96	120040		
61	100	88.8	165.0
68	0.4	0.2	0.4#



#23  
 Bromochloromethane  
 Concen: 5.524 ug/L  
 RT: 4.98 min Scan# 639  
 Delta R.T. 0.01 min  
 Lab File: VX017951.D  
 Acq: 17 Aug 2020 20:44

Tgt Ion	Resp	Lower	Upper
128	59505		
49	100	100.2	186.0
130	110.4	89.1	165.5
51	42.6	37.2	55.8

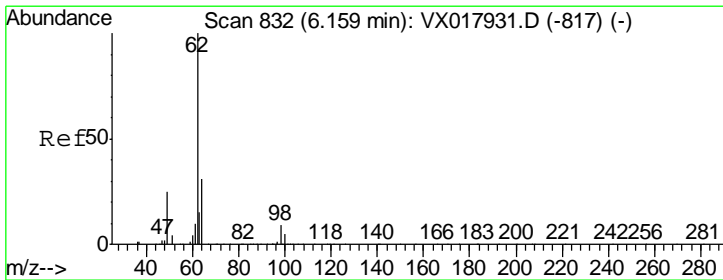
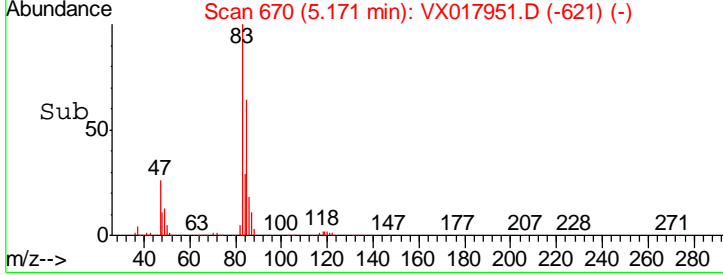
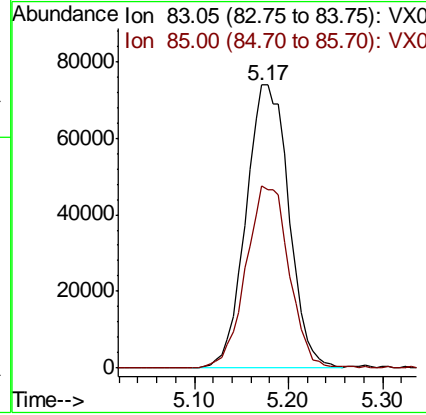
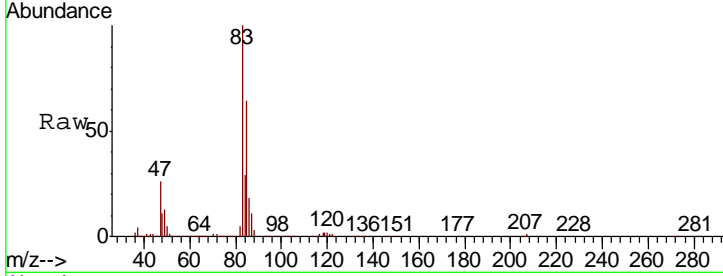




#25  
 Chloroform  
 Concen: 5.574 ug/L  
 RT: 5.17 min Scan# 670  
 Delta R.T. -0.00 min  
 Lab File: VX017951.D  
 Acq: 17 Aug 2020 20:44

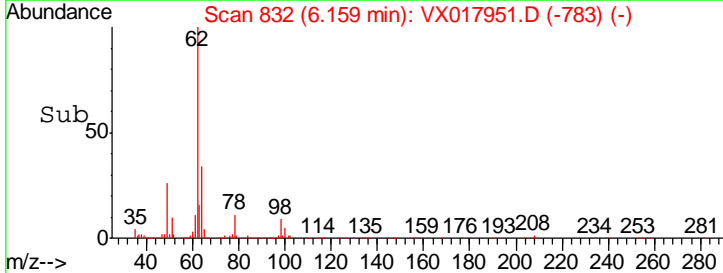
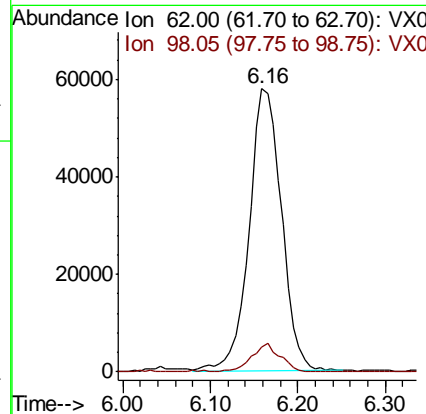
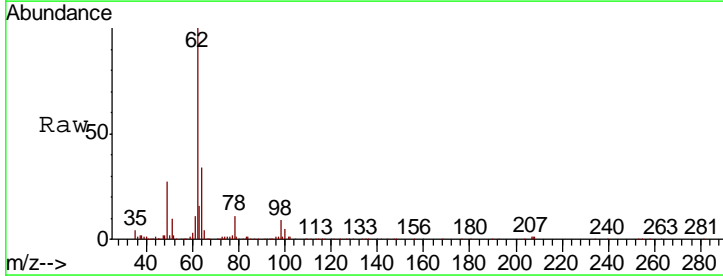
Instrument :  
 MSVOA\_X  
 ClientSampled :

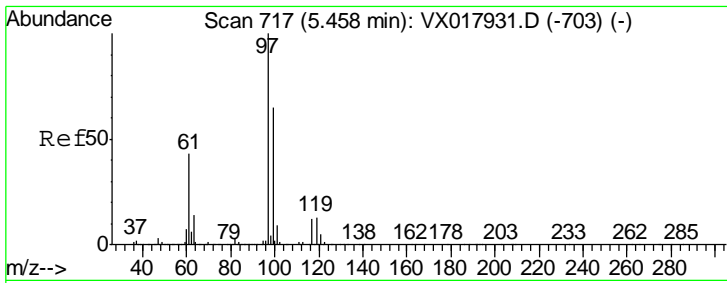
Tgt Ion	Resp	Lower	Upper
83	100		
85	64.4	44.7	83.1



#27  
 1,2-Dichloroethane  
 Concen: 5.487 ug/L  
 RT: 6.16 min Scan# 832  
 Delta R.T. -0.00 min  
 Lab File: VX017951.D  
 Acq: 17 Aug 2020 20:44

Tgt Ion	Resp	Lower	Upper
62	100		
98	8.7	6.7	10.1

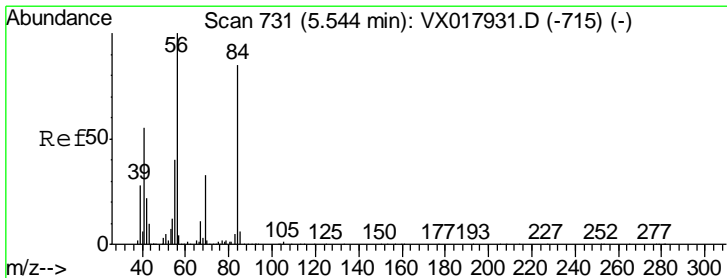
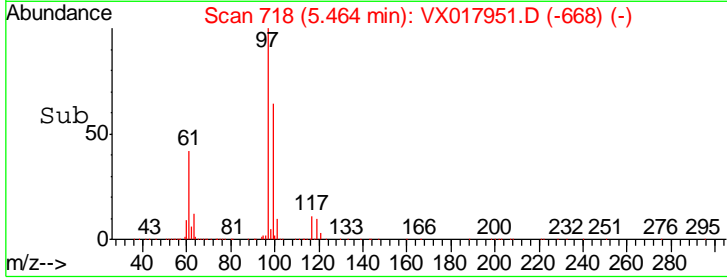
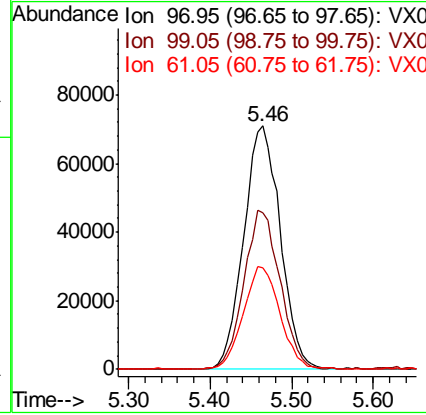
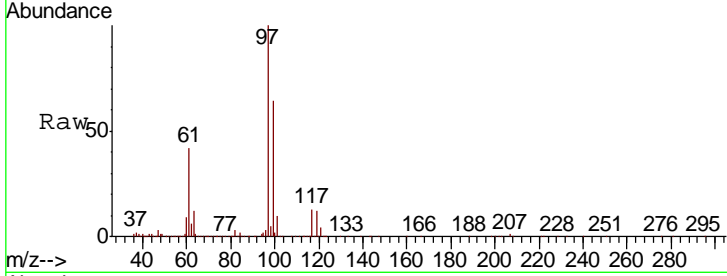




#29  
 1,1,1-Trichloroethane  
 Concen: 5.694 ug/L  
 RT: 5.46 min Scan# 718  
 Delta R.T. 0.01 min  
 Lab File: VX017951.D  
 Acq: 17 Aug 2020 20:44

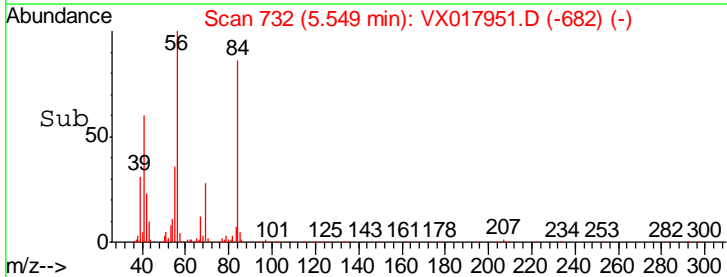
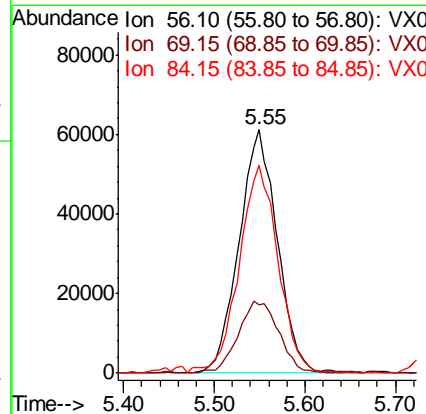
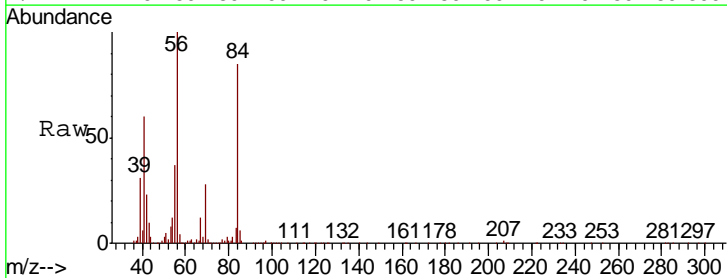
Instrument :  
 MSVOA\_X  
 ClientSampled :

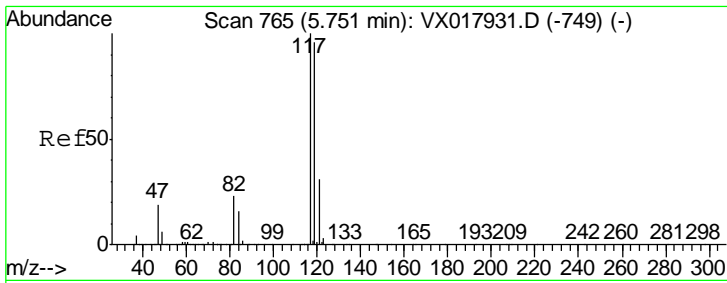
Tgt Ion	Resp	Lower	Upper
97	100		
99	64.5	52.2	78.2
61	42.6	33.8	50.6



#30  
 Cyclohexane  
 Concen: 5.294 ug/L  
 RT: 5.55 min Scan# 732  
 Delta R.T. 0.01 min  
 Lab File: VX017951.D  
 Acq: 17 Aug 2020 20:44

Tgt Ion	Resp	Lower	Upper
56	100		
69	31.2	25.1	37.7
84	86.6	70.7	106.1

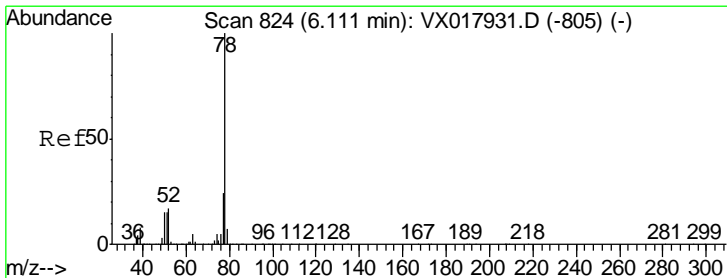
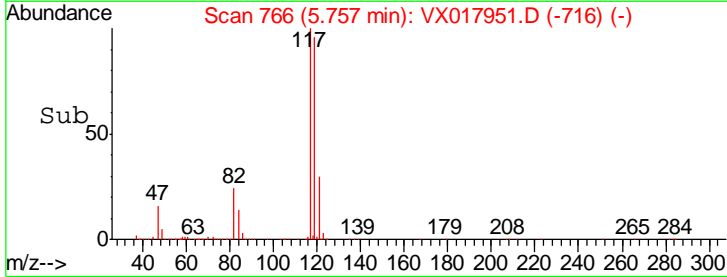
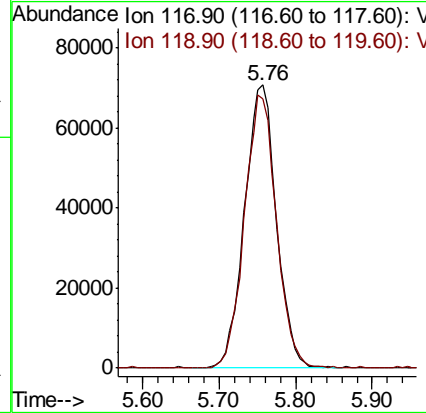
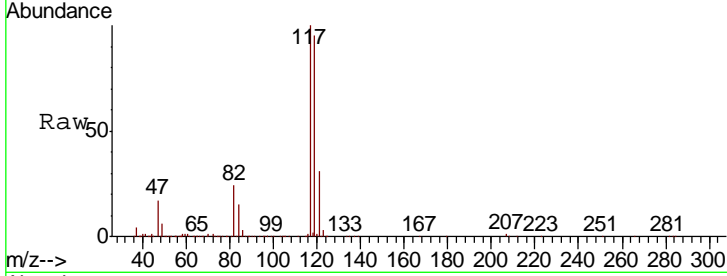




#31  
 Carbon tetrachloride  
 Concen: 5.705 ug/L  
 RT: 5.76 min Scan# 766  
 Delta R.T. 0.01 min  
 Lab File: VX017951.D  
 Acq: 17 Aug 2020 20:44

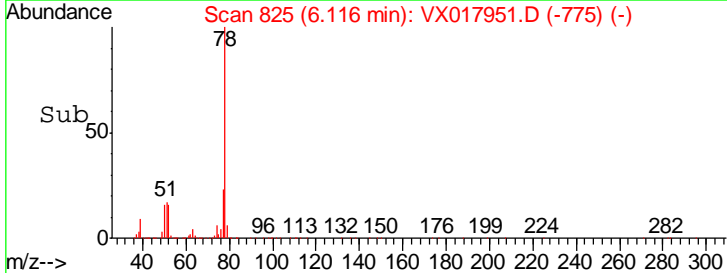
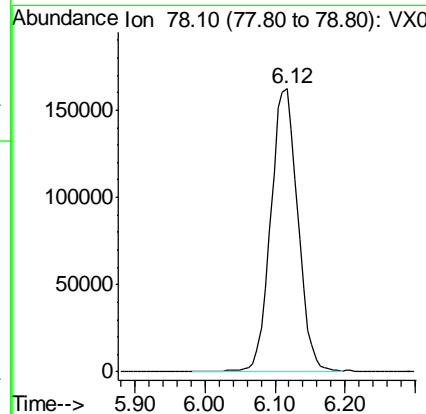
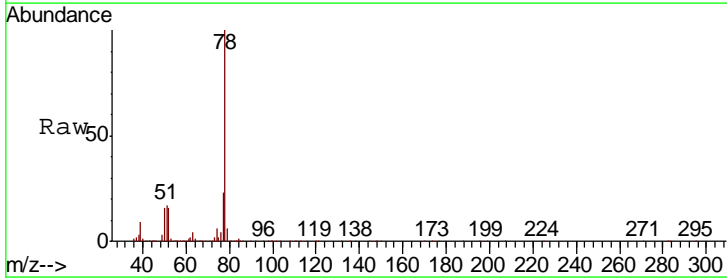
Instrument : MSVOA\_X  
 ClientSampled :

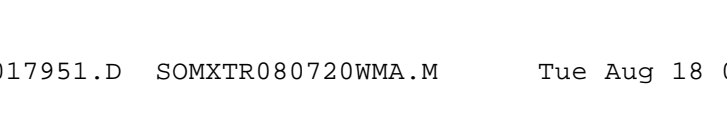
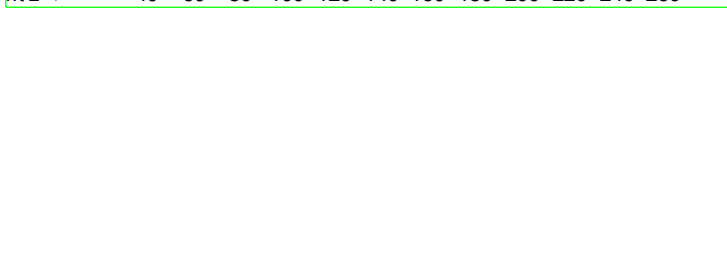
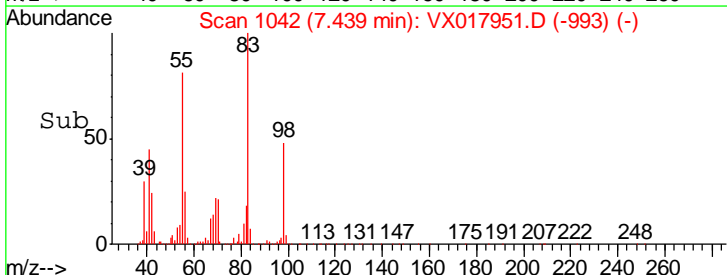
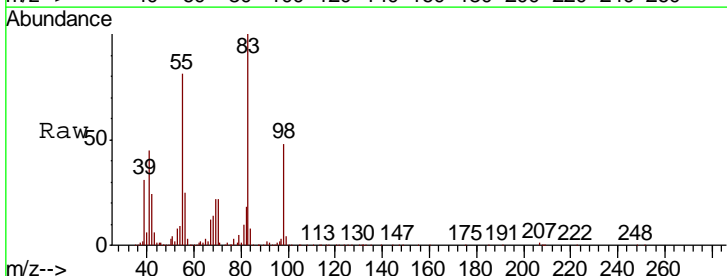
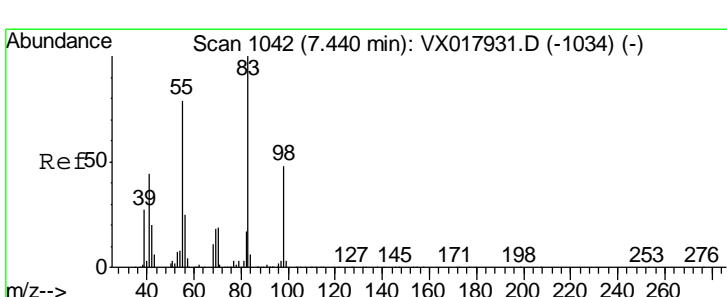
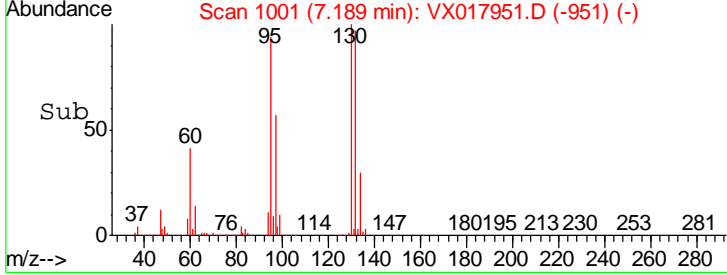
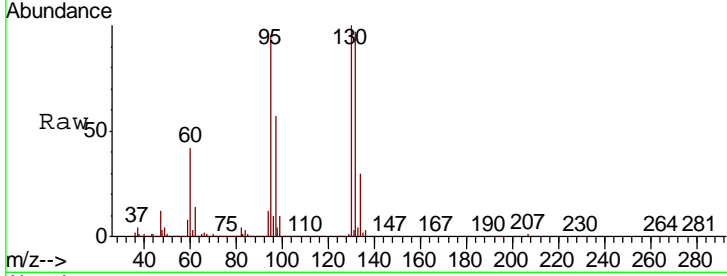
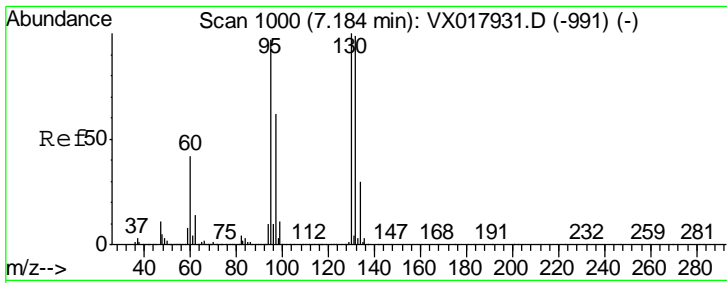
Tgt Ion: 117 Resp: 204632  
 Ion Ratio Lower Upper  
 117 100  
 119 96.3 77.6 116.4



#33  
 Benzene  
 Concen: 5.207 ug/L  
 RT: 6.12 min Scan# 825  
 Delta R.T. 0.01 min  
 Lab File: VX017951.D  
 Acq: 17 Aug 2020 20:44

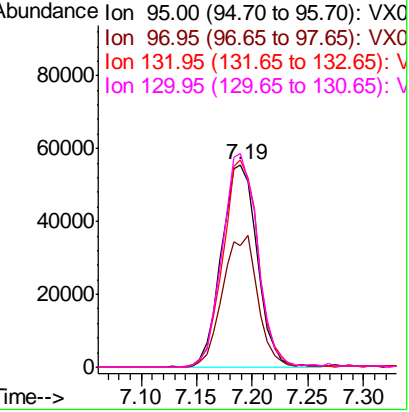
Tgt Ion: 78 Resp: 437313





#34  
 Trichloroethene  
 Concen: 5.042 ug/L  
 RT: 7.19 min Scan# 1001  
 Delta R.T. 0.01 min  
 Lab File: VX017951.D  
 Acq: 17 Aug 2020 20:44

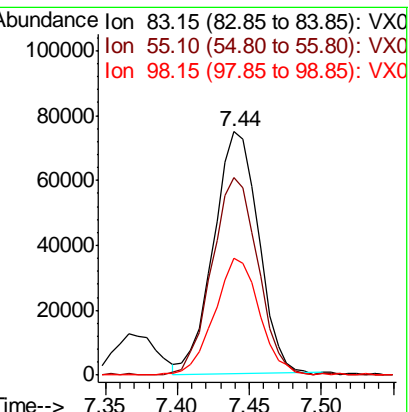
Tgt Ion	Resp	Lower	Upper
95	123598		
97	60.2	46.1	85.5
132	102.6	66.0	122.6
130	105.6	71.7	133.1



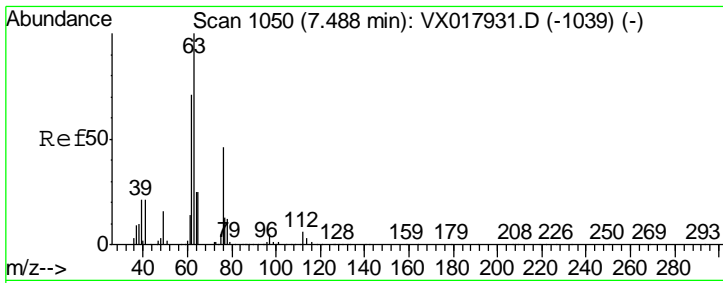
Instrument : MSVOA\_X  
 ClientSampled :

#35  
 Methylcyclohexane  
 Concen: 4.681 ug/L  
 RT: 7.44 min Scan# 1042  
 Delta R.T. -0.00 min  
 Lab File: VX017951.D  
 Acq: 17 Aug 2020 20:44

Tgt Ion	Resp	Lower	Upper
83	161310		
55	82.9	62.4	93.6
98	48.7	38.0	57.0



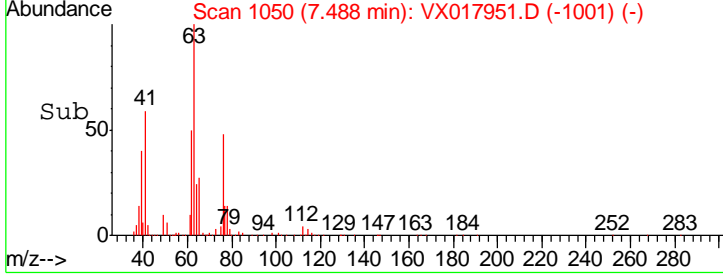
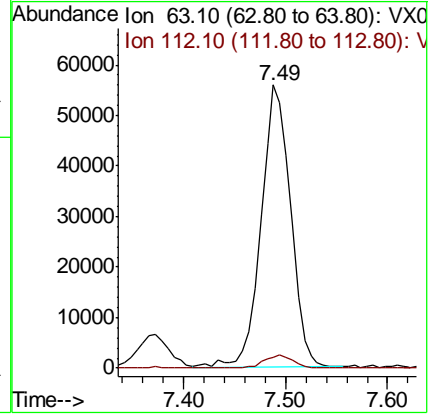
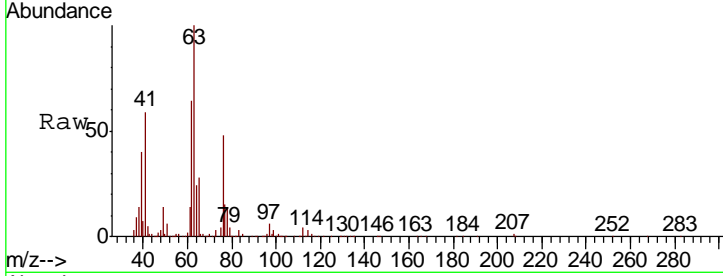




#37  
 1,2-Dichloropropane  
 Concen: 5.295 ug/L  
 RT: 7.49 min Scan# 1050  
 Delta R.T. -0.00 min  
 Lab File: VX017951.D  
 Acq: 17 Aug 2020 20:44

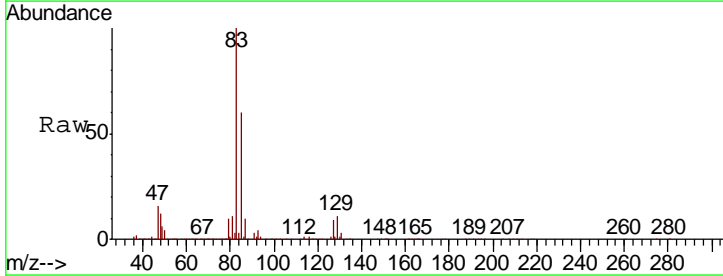
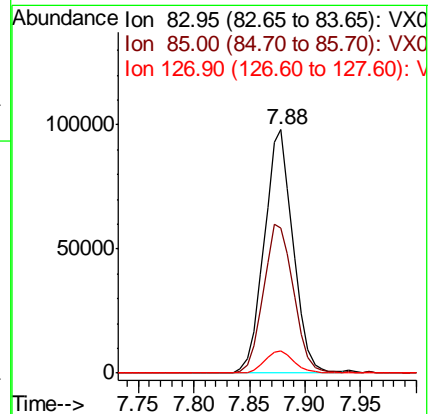
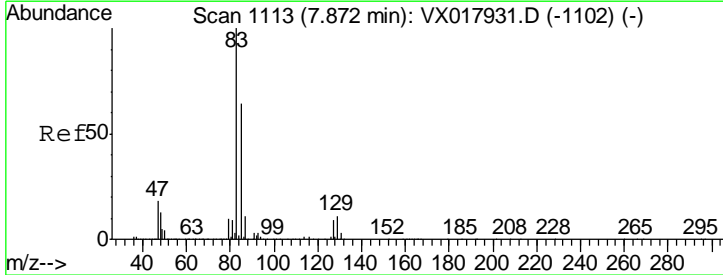
Instrument :  
 MSVOA\_X  
 ClientSampled :

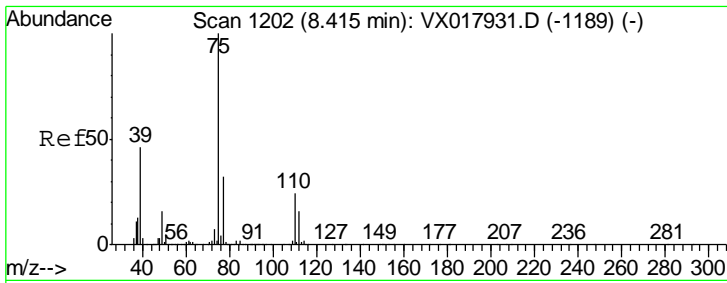
Tgt Ion	Resp	Lower	Upper
63	111817		
112	4.6	3.6	5.4



#38  
 Bromodichloromethane  
 Concen: 6.008 ug/L  
 RT: 7.88 min Scan# 1114  
 Delta R.T. 0.01 min  
 Lab File: VX017951.D  
 Acq: 17 Aug 2020 20:44

Tgt Ion	Resp	Lower	Upper
83	176756		
85	59.8	45.9	85.3
127	9.0	7.9	11.9

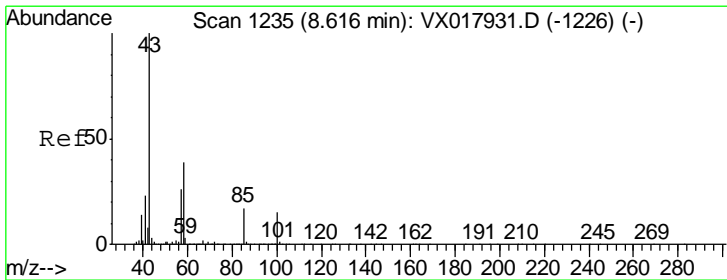
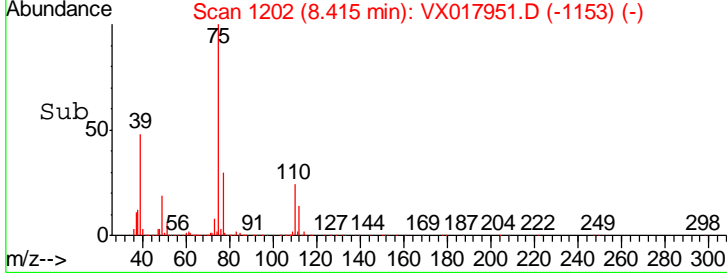
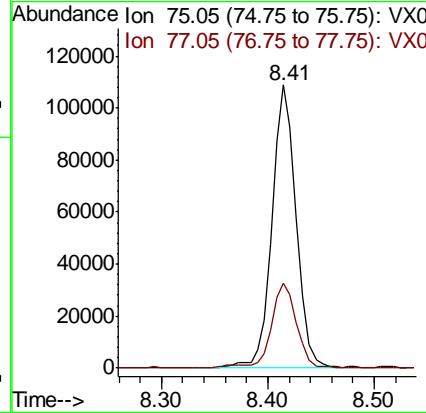
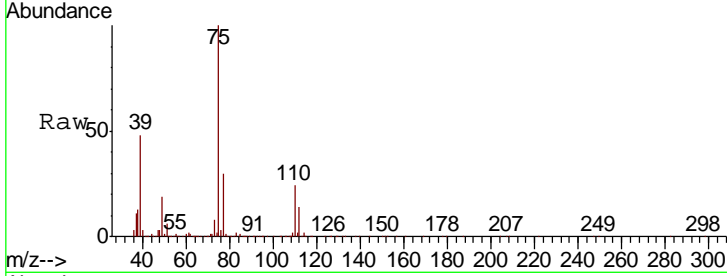




#39  
 cis-1,3-Dichloropropene  
 Concen: 5.317 ug/L  
 RT: 8.41 min Scan# 1202  
 Delta R.T. -0.00 min  
 Lab File: VX017951.D  
 Acq: 17 Aug 2020 20:44

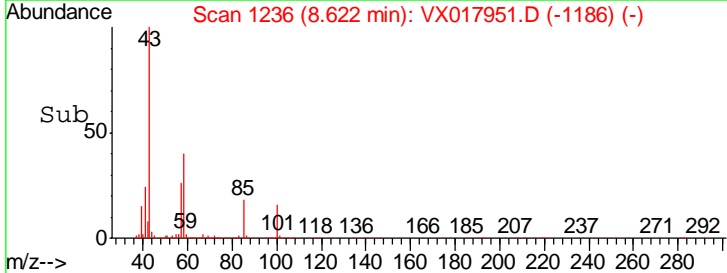
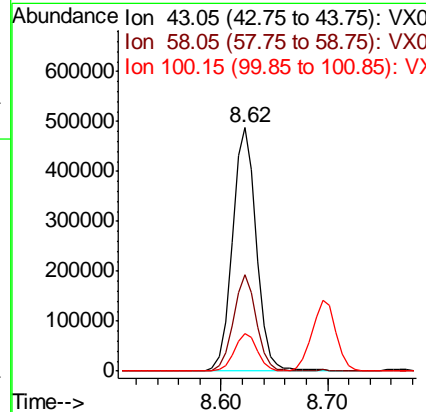
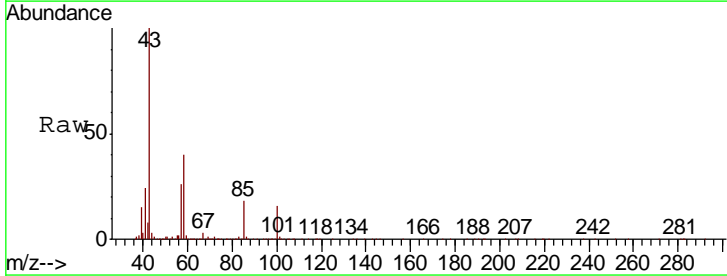
Instrument :  
 MSVOA\_X  
 ClientSampled :

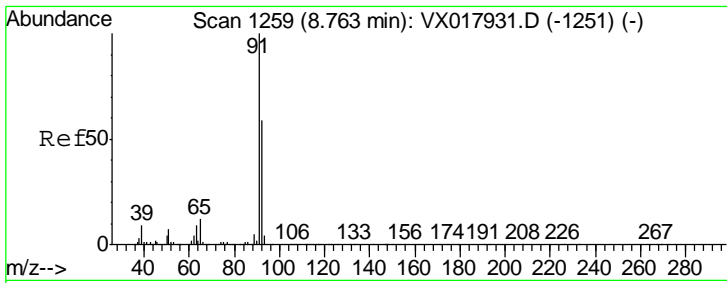
Tgt Ion	Resp	Lower	Upper
75	172875		
77	29.9	22.2	41.2



#40  
 4-Methyl-2-pentanone  
 Concen: 55.663 ug/L  
 RT: 8.62 min Scan# 1236  
 Delta R.T. 0.01 min  
 Lab File: VX017951.D  
 Acq: 17 Aug 2020 20:44

Tgt Ion	Resp	Lower	Upper
43	765343		
58	38.0	31.1	46.7
100	15.0	12.2	18.4

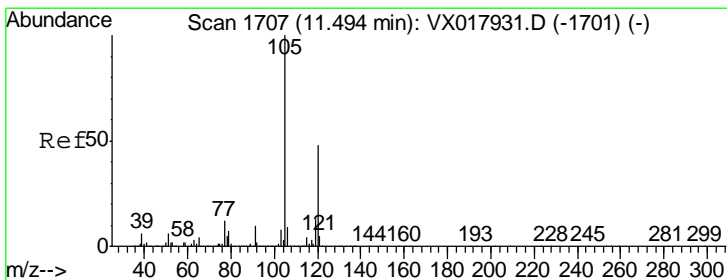
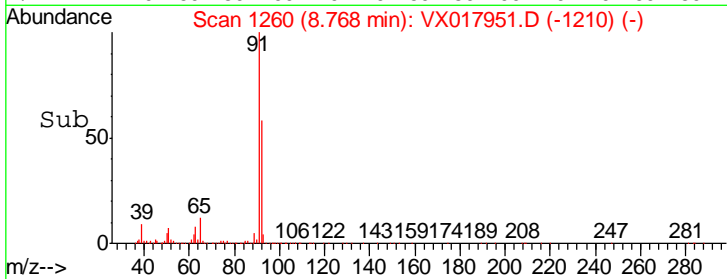
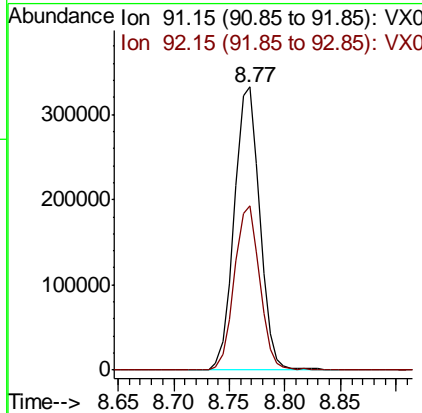
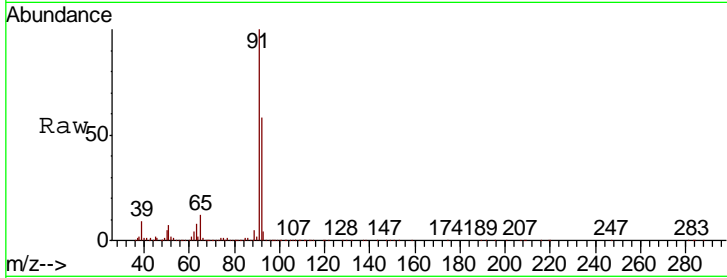




#42  
 Toluene  
 Concen: 5.780 ug/L  
 RT: 8.77 min Scan# 1260  
 Delta R.T. 0.01 min  
 Lab File: VX017951.D  
 Acq: 17 Aug 2020 20:44

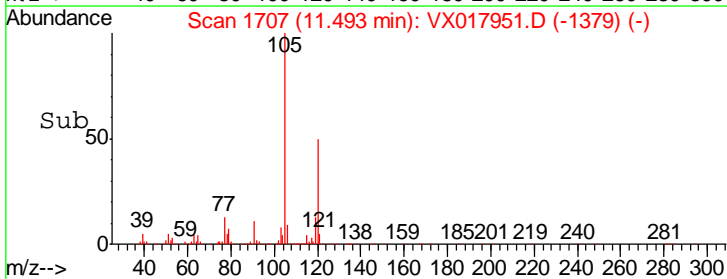
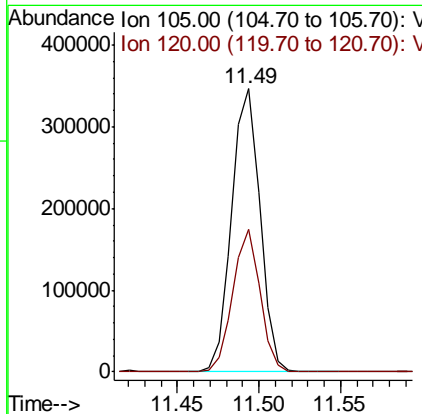
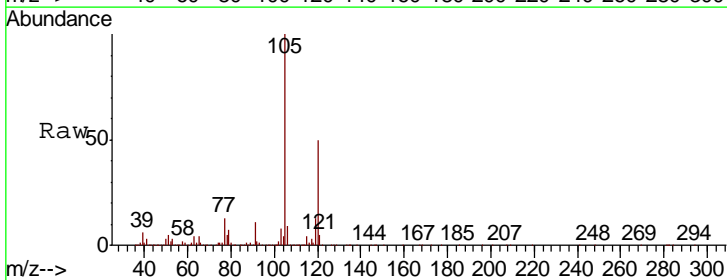
Instrument :  
 MSVOA\_X  
 ClientSampled :

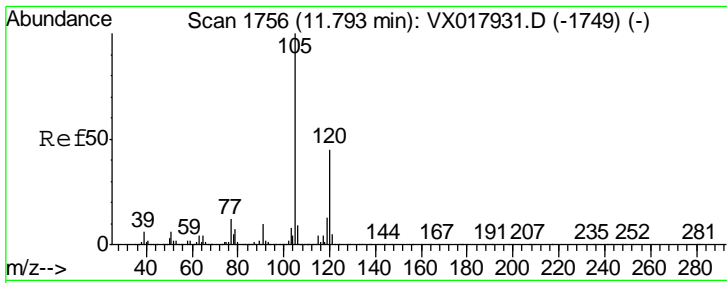
Tgt Ion	Resp	Lower	Upper
91	526916		
92	57.9	38.8	72.0



#43  
 1,3,5-Trimethylbenzene  
 Concen: 5.054 ug/L  
 RT: 11.49 min Scan# 1707  
 Delta R.T. -0.00 min  
 Lab File: VX017951.D  
 Acq: 17 Aug 2020 20:44

Tgt Ion	Resp	Lower	Upper
105	420538		
120	48.4	38.1	57.1

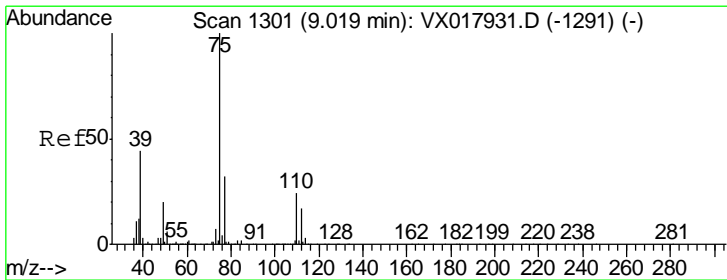
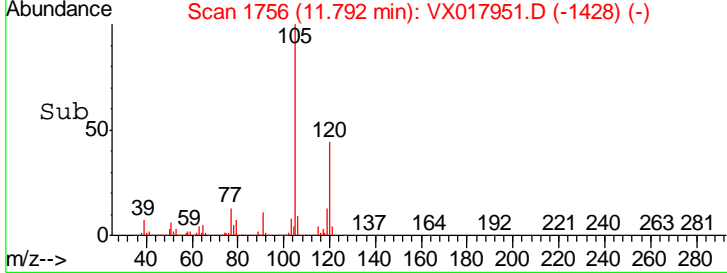
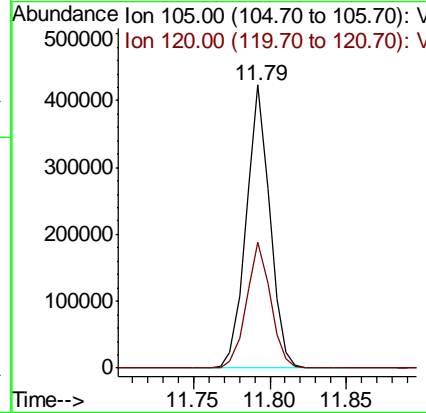
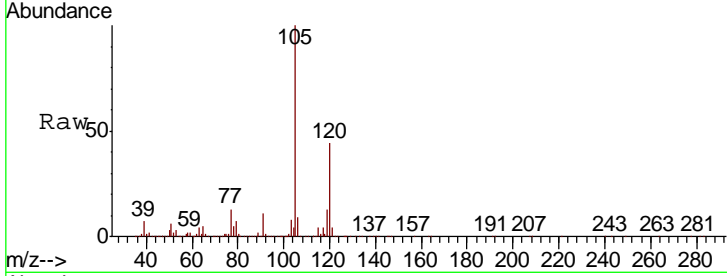




#44  
 1,2,4-Trimethylbenzene  
 Concen: 5.328 ug/L  
 RT: 11.79 min Scan# 1756  
 Delta R.T. -0.00 min  
 Lab File: VX017951.D  
 Acq: 17 Aug 2020 20:44

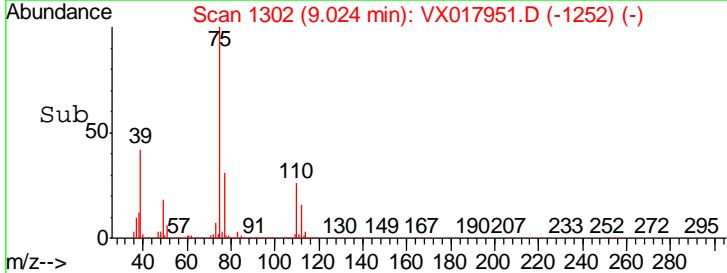
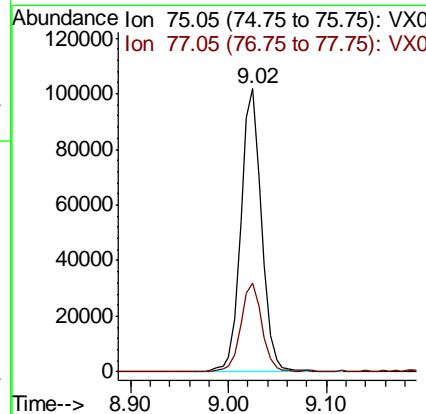
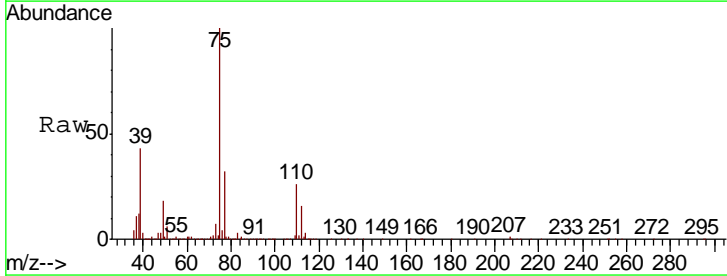
Instrument : MSVOA\_X  
 ClientSampled :

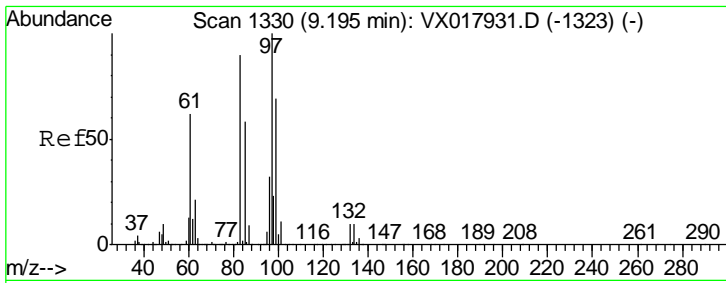
Tgt Ion	Resp	Lower	Upper
105	100		
120	45.3	35.8	53.8



#46  
 trans-1,3-Dichloropropene  
 Concen: 5.121 ug/L  
 RT: 9.02 min Scan# 1302  
 Delta R.T. 0.01 min  
 Lab File: VX017951.D  
 Acq: 17 Aug 2020 20:44

Tgt Ion	Resp	Lower	Upper
75	100		
77	31.5	21.6	40.2

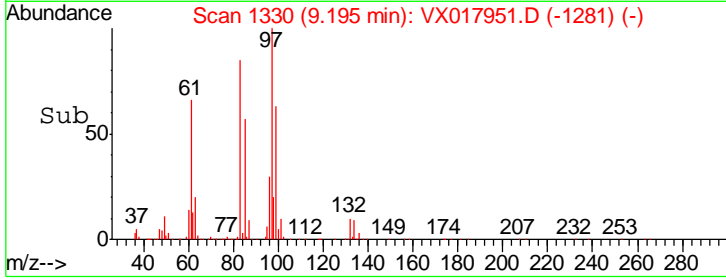
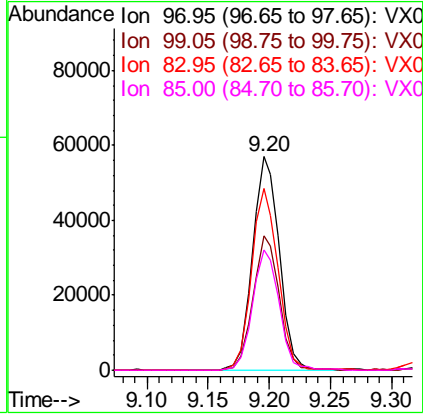
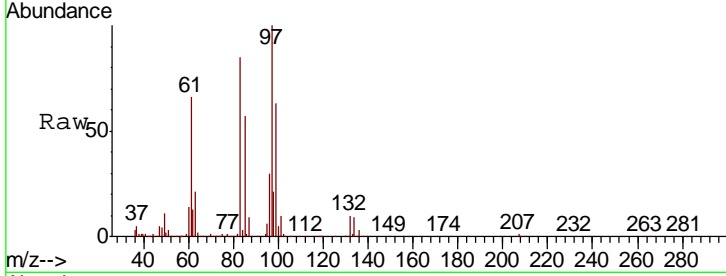




#47  
 1,1,2-Trichloroethane  
 Concen: 5.502 ug/L  
 RT: 9.20 min Scan# 1330  
 Delta R.T. -0.00 min  
 Lab File: VX017951.D  
 Acq: 17 Aug 2020 20:44

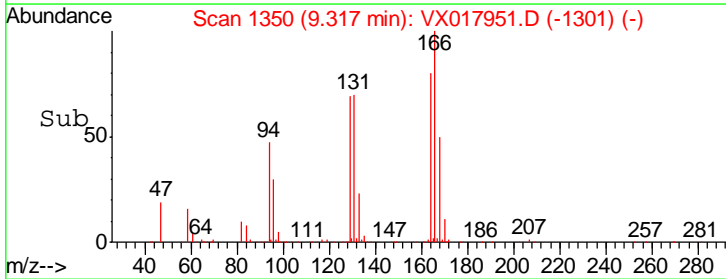
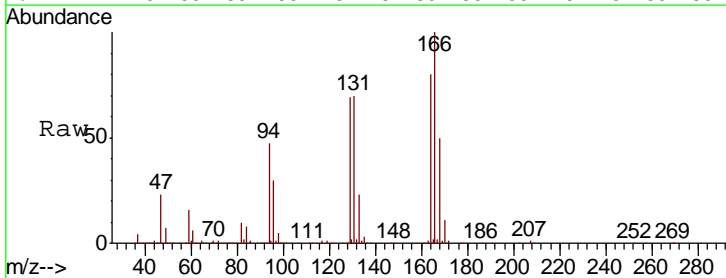
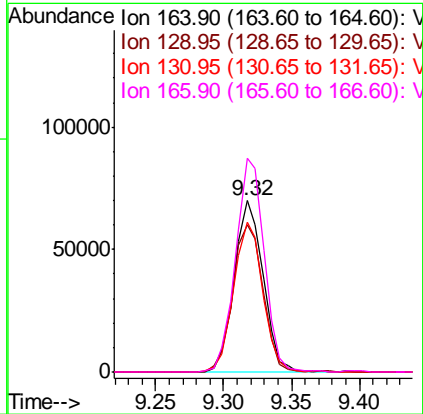
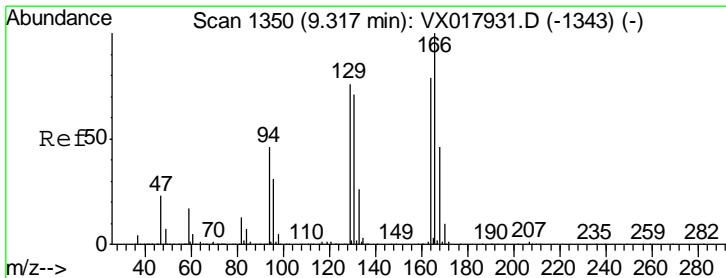
Instrument :  
 MSVOA\_X  
 ClientSampled :

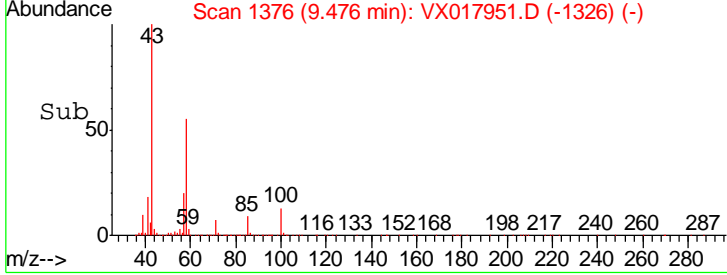
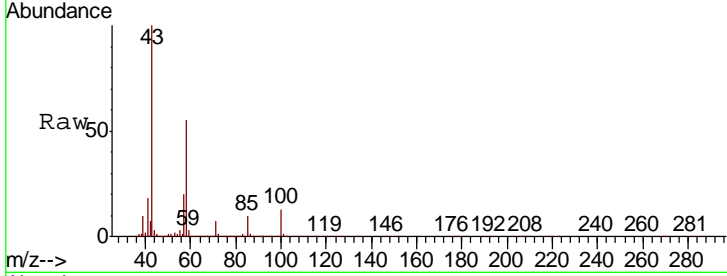
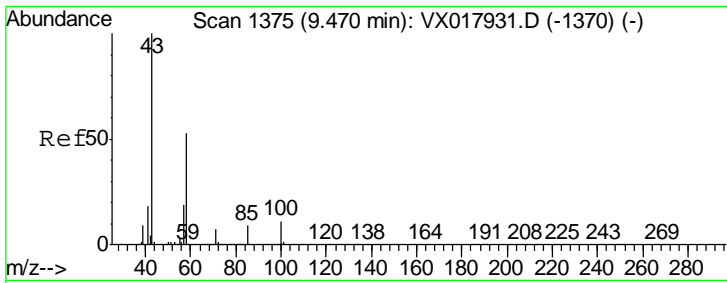
Tgt Ion	Resp	Lower	Upper
97	100		
99	62.9	43.9	81.5
83	84.9	58.4	108.6
85	56.5	37.5	69.6



#49  
 Tetrachloroethene  
 Concen: 5.283 ug/L  
 RT: 9.32 min Scan# 1350  
 Delta R.T. -0.00 min  
 Lab File: VX017951.D  
 Acq: 17 Aug 2020 20:44

Tgt Ion	Resp	Lower	Upper
164	100		
129	86.0	67.4	125.2
131	87.3	65.3	121.3
166	124.7	87.2	161.9

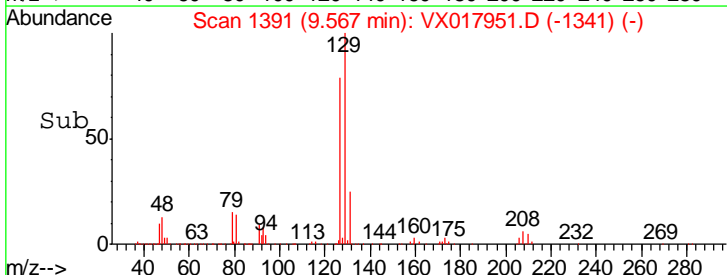
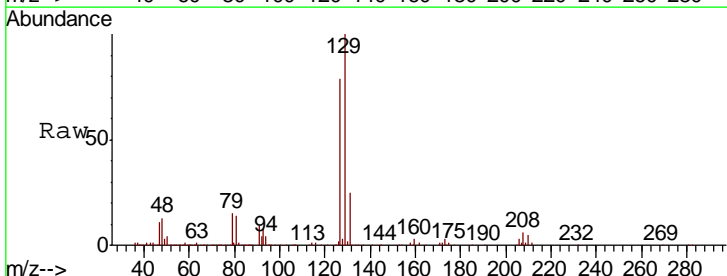
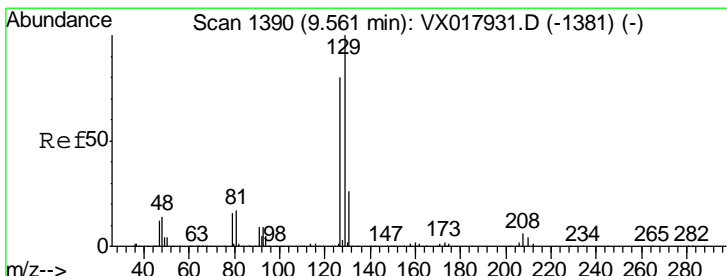
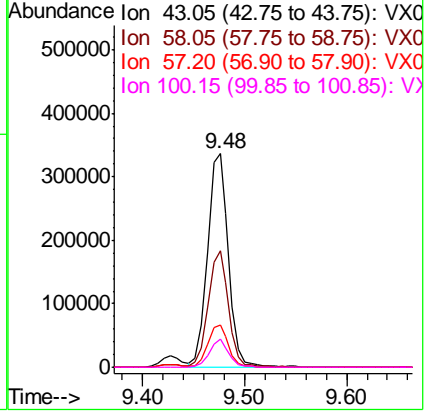




#50  
 2-Hexanone  
 Concen: 48.723 ug/L  
 RT: 9.48 min Scan# 1376  
 Delta R.T. 0.01 min  
 Lab File: VX017951.D  
 Acq: 17 Aug 2020 20:44

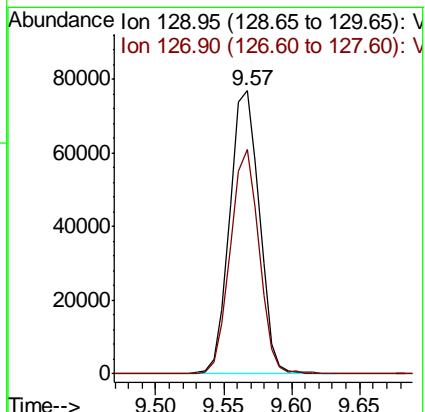
Instrument :  
 MSVOA\_X  
 ClientSampled :

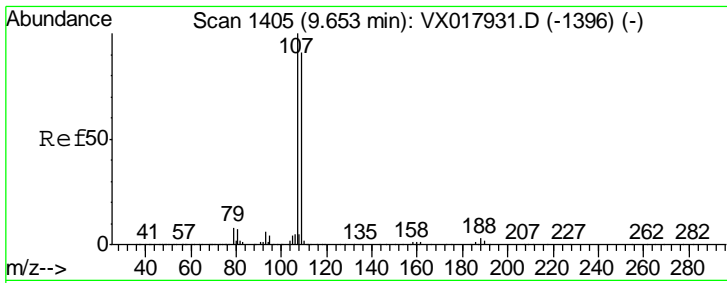
Tgt Ion	Resp	Lower	Upper
43	100		
58	52.5	43.0	64.6
57	19.4	15.0	22.4
100	12.2	9.2	13.8



#51  
 Dibromochloromethane  
 Concen: 5.358 ug/L  
 RT: 9.57 min Scan# 1391  
 Delta R.T. 0.01 min  
 Lab File: VX017951.D  
 Acq: 17 Aug 2020 20:44

Tgt Ion	Resp	Lower	Upper
129	100		
127	79.1	52.5	97.5

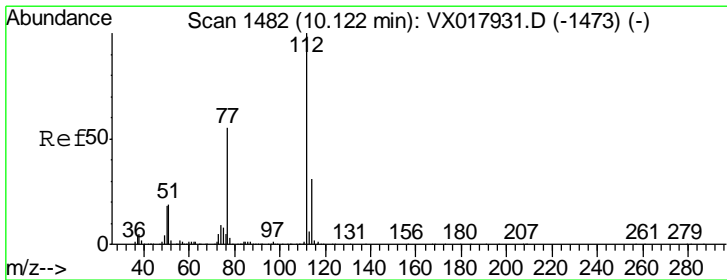
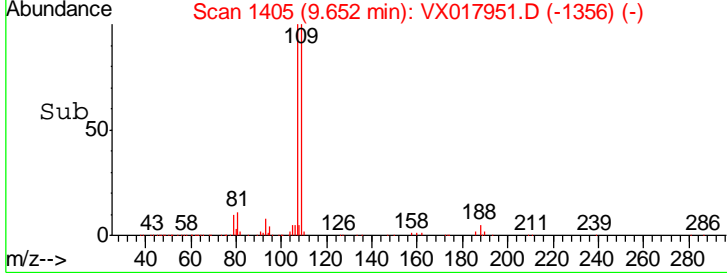
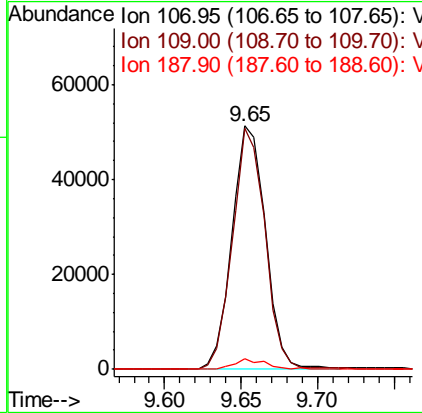
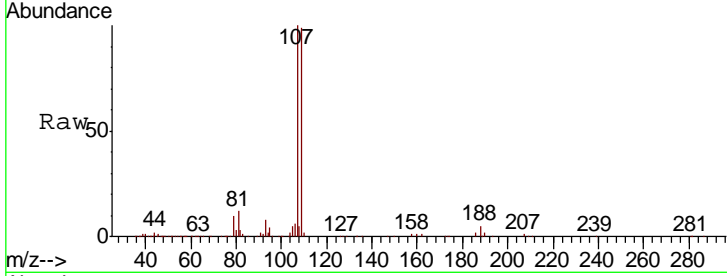




#52  
 1,2-Dibromoethane  
 Concen: 5.025 ug/L  
 RT: 9.65 min Scan# 1405  
 Delta R.T. -0.00 min  
 Lab File: VX017951.D  
 Acq: 17 Aug 2020 20:44

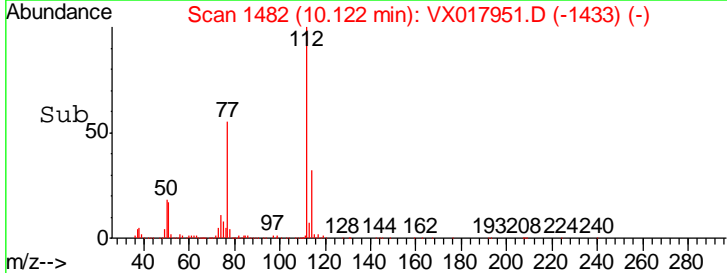
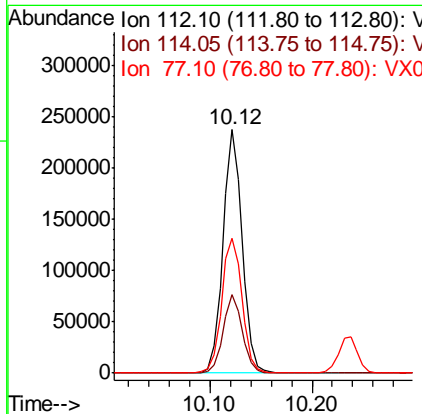
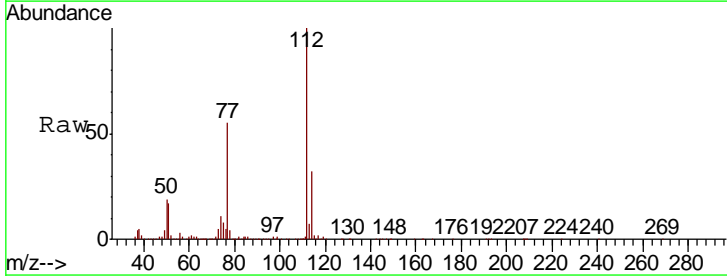
Instrument : MSVOA\_X  
 ClientSampled :

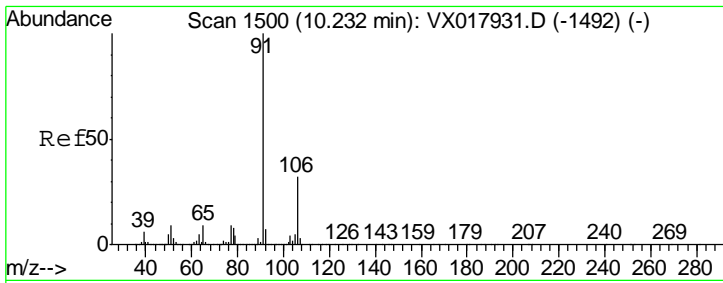
Tgt Ion	Resp	Lower	Upper
107	77952		
109	99.3	64.6	120.0
188	4.6	2.5	3.7#



#53  
 Chlorobenzene  
 Concen: 5.240 ug/L  
 RT: 10.12 min Scan# 1482  
 Delta R.T. -0.00 min  
 Lab File: VX017951.D  
 Acq: 17 Aug 2020 20:44

Tgt Ion	Resp	Lower	Upper
112	310962		
114	32.1	23.5	43.7
77	55.4	46.7	70.1

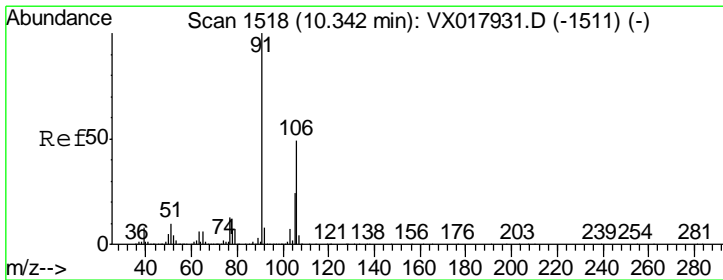
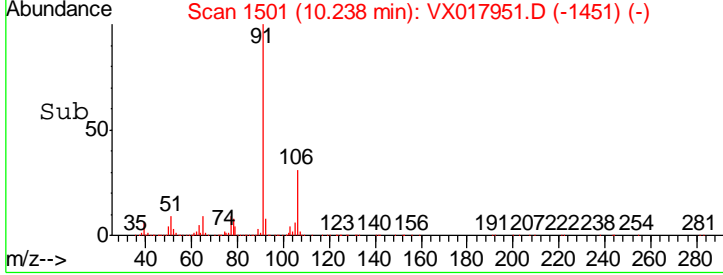
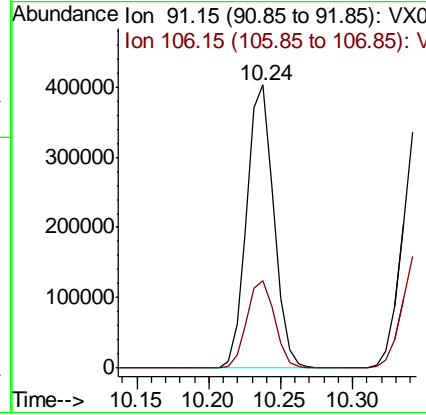
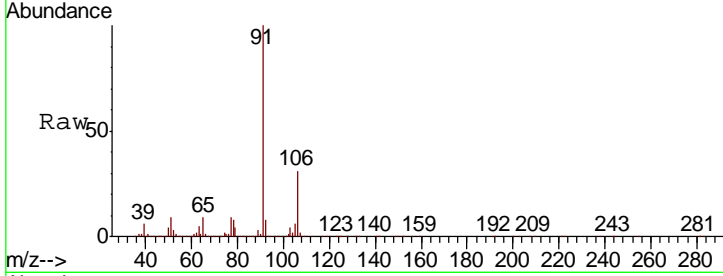




#54  
 Ethylbenzene  
 Concen: 5.272 ug/L  
 RT: 10.24 min Scan# 1501  
 Delta R.T. 0.01 min  
 Lab File: VX017951.D  
 Acq: 17 Aug 2020 20:44

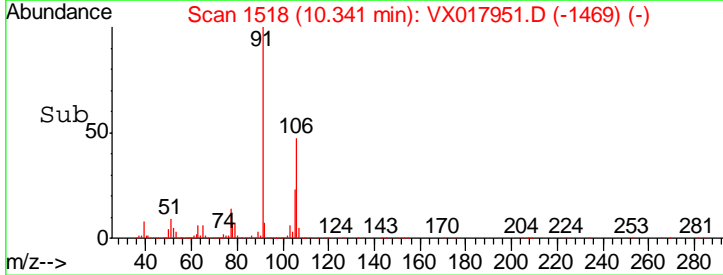
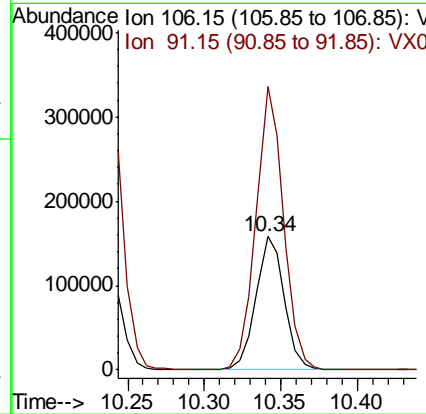
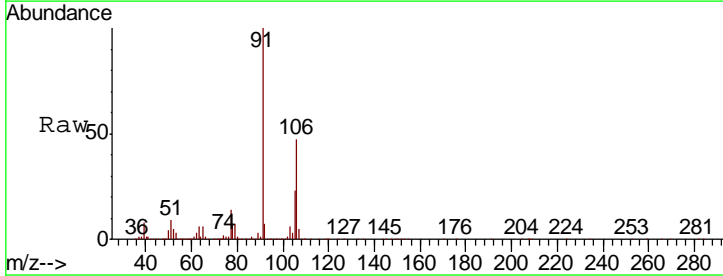
Instrument : MSVOA\_X  
 ClientSampled :

Tgt Ion	Resp	Lower	Upper
91	100		
106	30.8	22.5	41.9

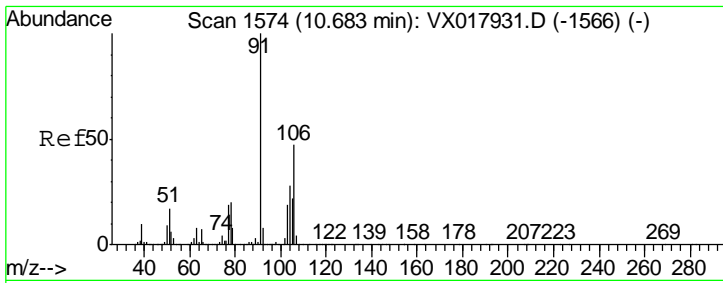


#55  
 m,p-xylene  
 Concen: 5.363 ug/L  
 RT: 10.34 min Scan# 1518  
 Delta R.T. -0.00 min  
 Lab File: VX017951.D  
 Acq: 17 Aug 2020 20:44

Tgt Ion	Resp	Lower	Upper
106	100		
91	212.0	143.3	266.1



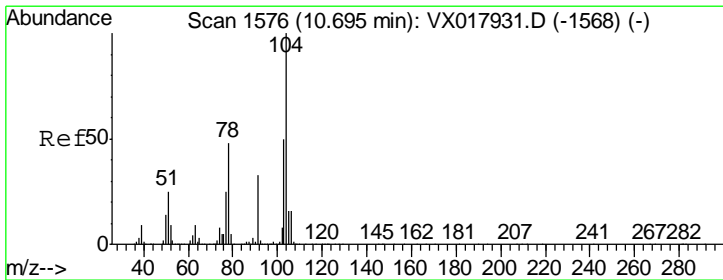
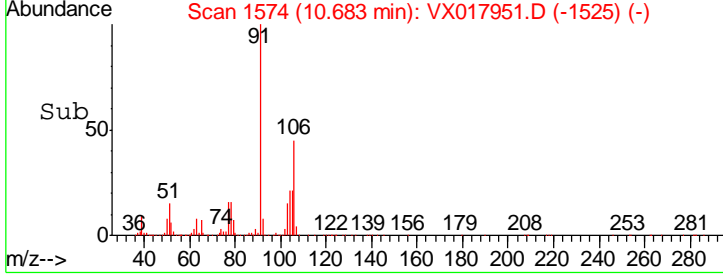
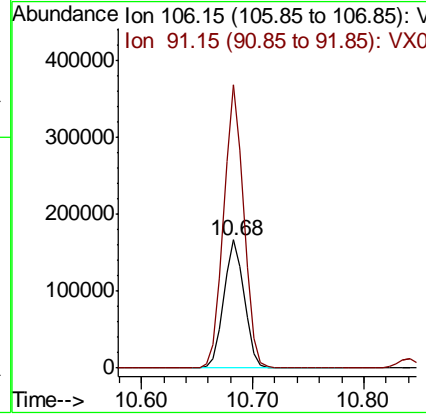
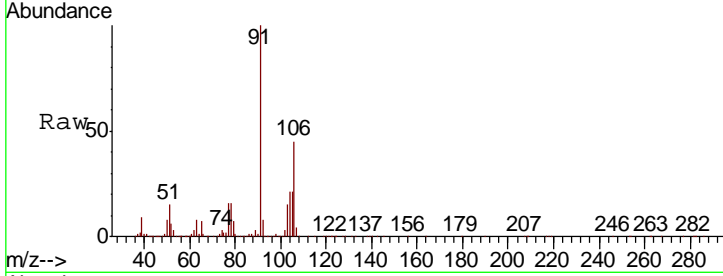




#56  
 o-xylene  
 Concen: 5.763 ug/L  
 RT: 10.68 min Scan# 1574  
 Delta R.T. -0.00 min  
 Lab File: VX017951.D  
 Acq: 17 Aug 2020 20:44

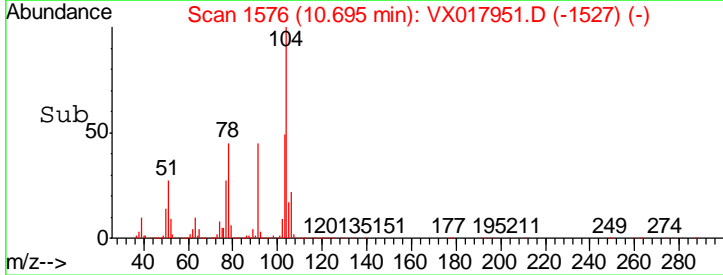
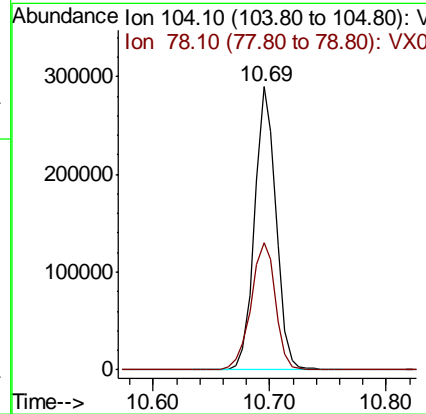
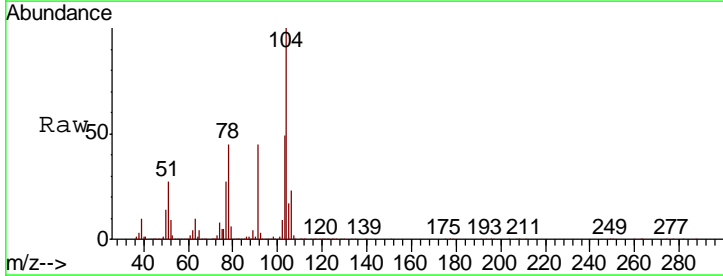
Instrument : MSVOA\_X  
 ClientSampled :

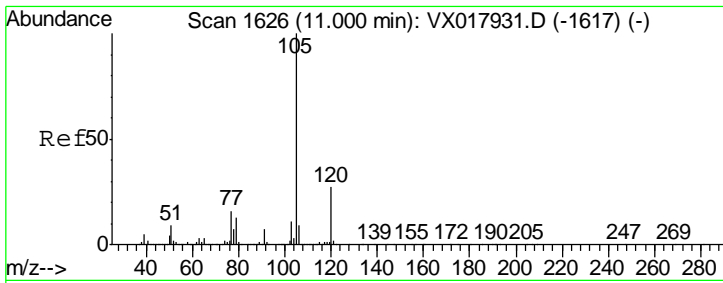
Tgt Ion	Resp	Lower	Upper
106	212256		
91	220.8	149.8	278.2



#57  
 Styrene  
 Concen: 5.982 ug/L  
 RT: 10.69 min Scan# 1576  
 Delta R.T. -0.00 min  
 Lab File: VX017951.D  
 Acq: 17 Aug 2020 20:44

Tgt Ion	Resp	Lower	Upper
104	372617		
78	45.0	33.7	62.5

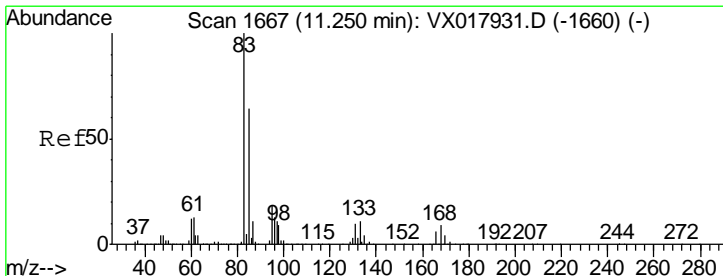
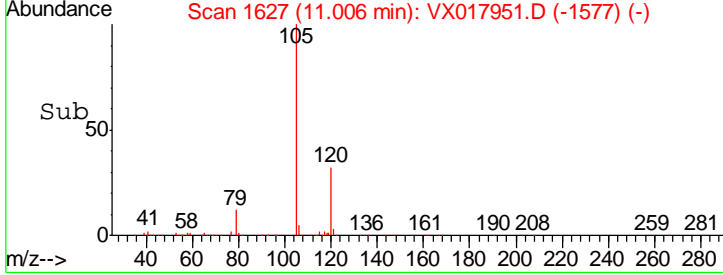
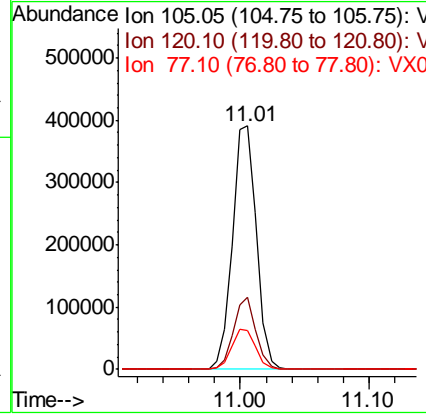
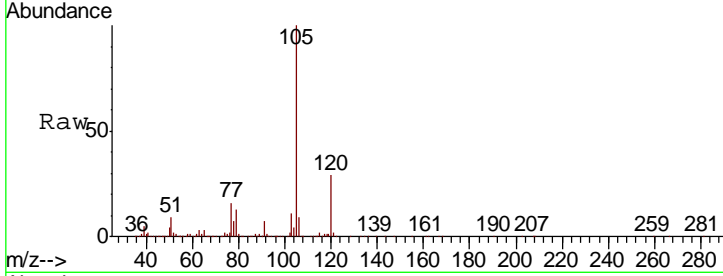




#58  
 Isopropylbenzene  
 Concen: 5.189 ug/L  
 RT: 11.01 min Scan# 1627  
 Delta R.T. 0.01 min  
 Lab File: VX017951.D  
 Acq: 17 Aug 2020 20:44

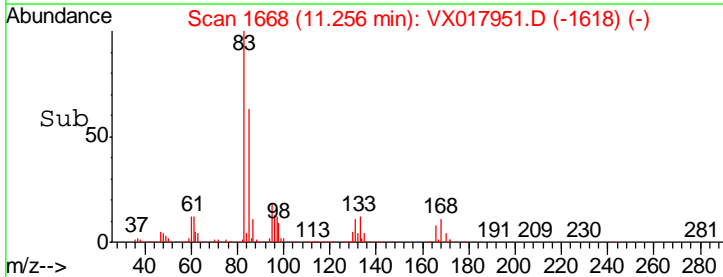
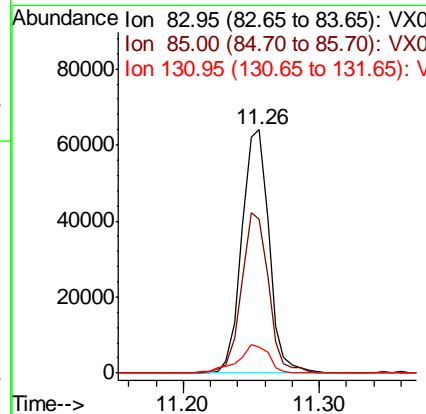
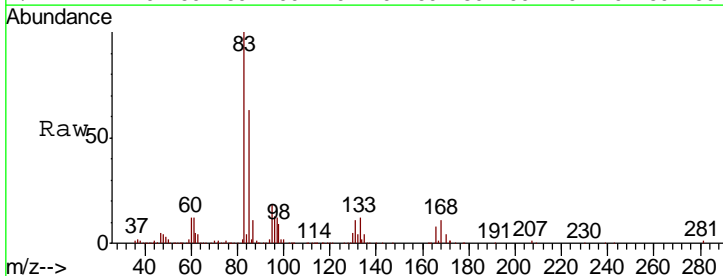
Instrument :  
 MSVOA\_X  
 ClientSampled :

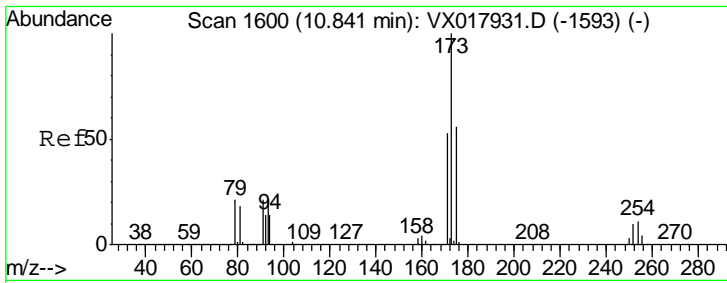
Tgt Ion	Resp	Lower	Upper
105	511556		
120	27.6	21.8	32.6
77	16.3	12.8	19.2



#60  
 1,1,2,2-Tetrachloroethane  
 Concen: 5.115 ug/L  
 RT: 11.26 min Scan# 1668  
 Delta R.T. 0.01 min  
 Lab File: VX017951.D  
 Acq: 17 Aug 2020 20:44

Tgt Ion	Resp	Lower	Upper
83	89010		
85	63.3	44.6	82.8
131	10.6	8.2	12.2

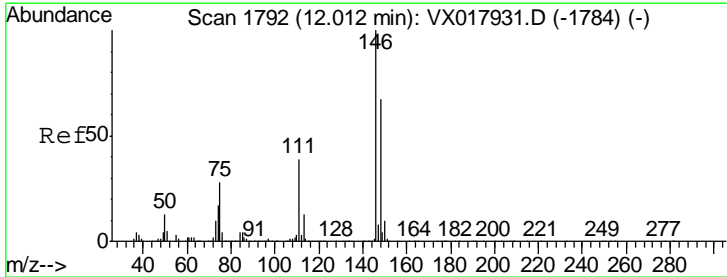
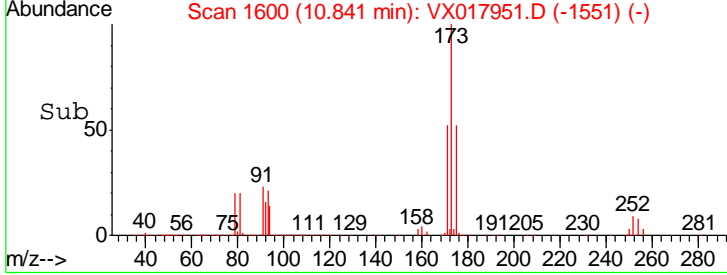
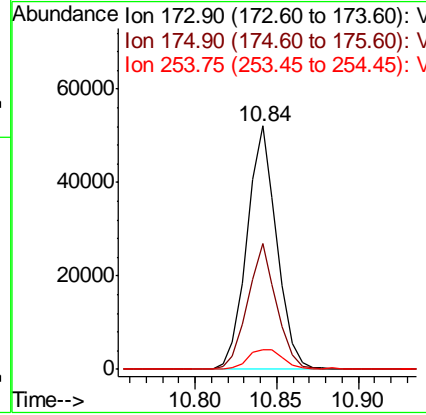
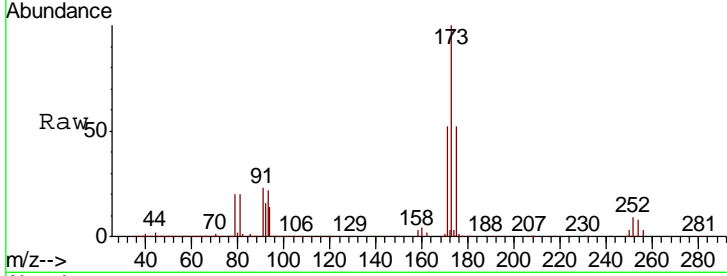




#62  
 Bromoform  
 Concen: 4.946 ug/L  
 RT: 10.84 min Scan# 1600  
 Delta R.T. -0.00 min  
 Lab File: VX017951.D  
 Acq: 17 Aug 2020 20:44

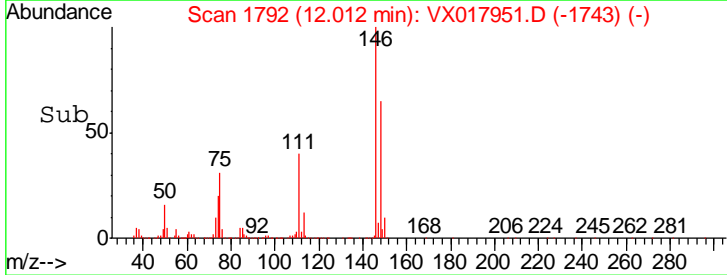
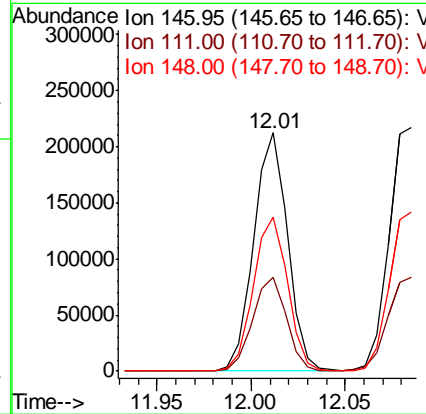
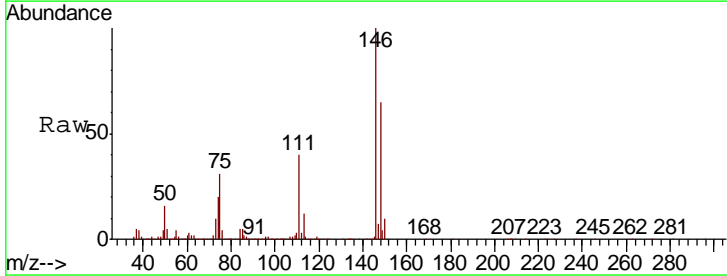
Instrument : MSVOA\_X  
 ClientSampled :

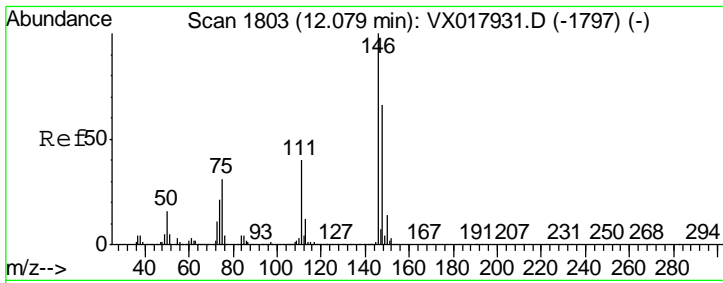
Tgt Ion	Resp	Lower	Upper
173	66288		
175	50.3	40.0	60.0
254	9.8	7.7	11.5



#63  
 1,3-Dichlorobenzene  
 Concen: 5.068 ug/L  
 RT: 12.01 min Scan# 1792  
 Delta R.T. -0.00 min  
 Lab File: VX017951.D  
 Acq: 17 Aug 2020 20:44

Tgt Ion	Resp	Lower	Upper
146	264482		
111	39.6	27.6	51.4
148	64.6	43.9	81.5

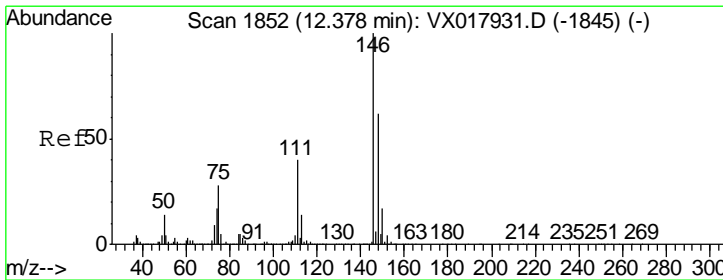
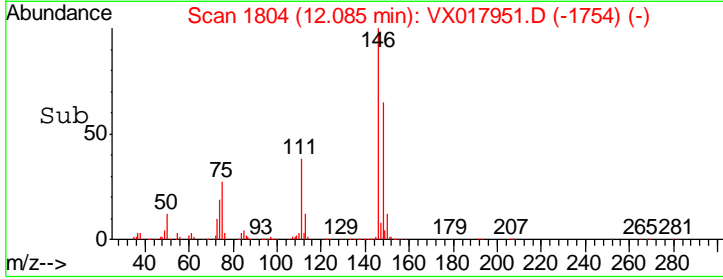
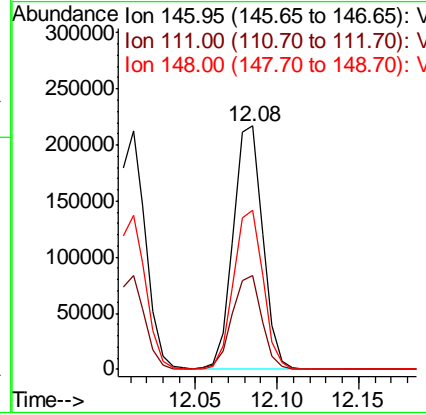
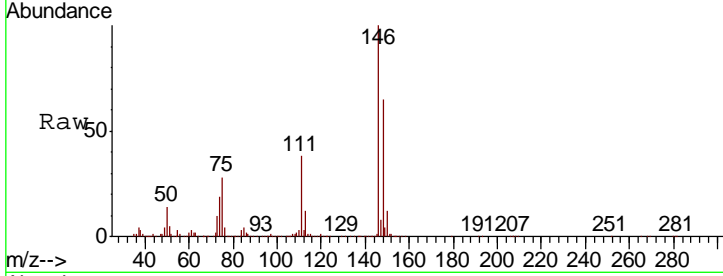




#64  
 1,4-Dichlorobenzene  
 Concen: 5.267 ug/L  
 RT: 12.08 min Scan# 1804  
 Delta R.T. 0.01 min  
 Lab File: VX017951.D  
 Acq: 17 Aug 2020 20:44

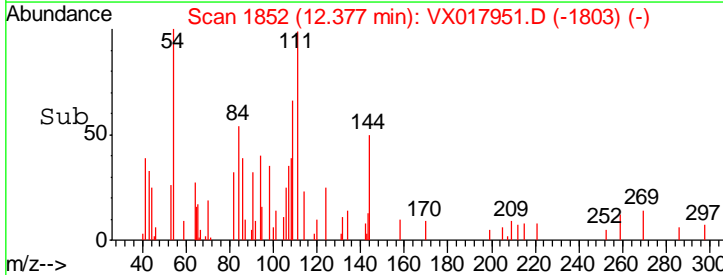
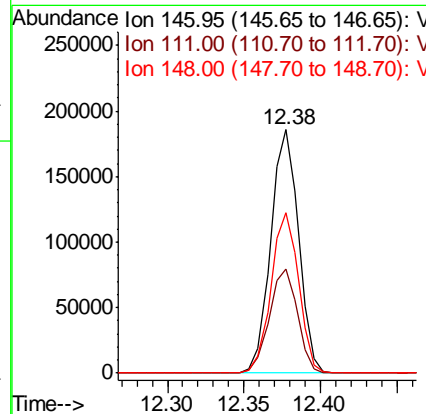
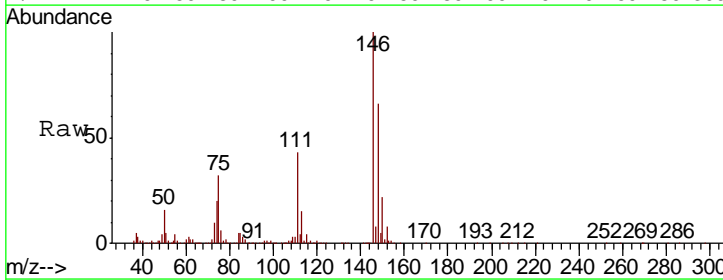
Instrument : MSVOA\_X  
 ClientSampled :

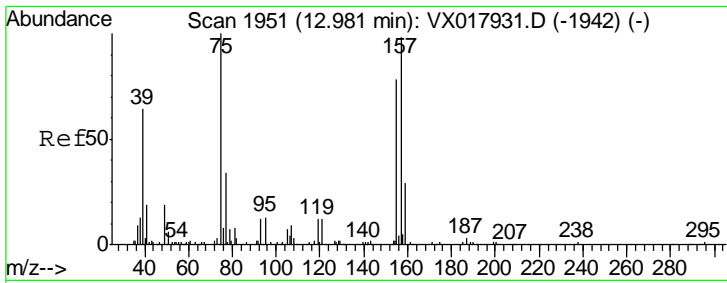
Tgt Ion	Resp	Lower	Upper
146	100		
111	38.5	26.0	48.2
148	65.5	43.2	80.2



#66  
 1,2-Dichlorobenzene  
 Concen: 4.882 ug/L  
 RT: 12.38 min Scan# 1852  
 Delta R.T. -0.00 min  
 Lab File: VX017951.D  
 Acq: 17 Aug 2020 20:44

Tgt Ion	Resp	Lower	Upper
146	100		
111	43.0	32.2	48.4
148	65.7	52.3	78.5

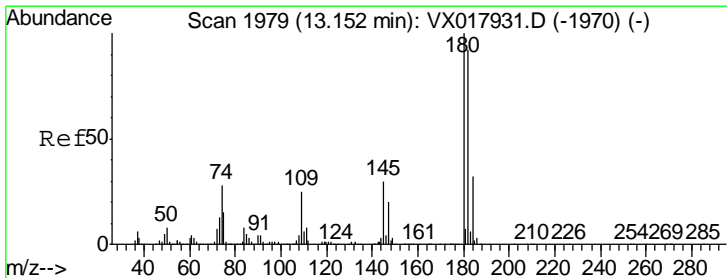
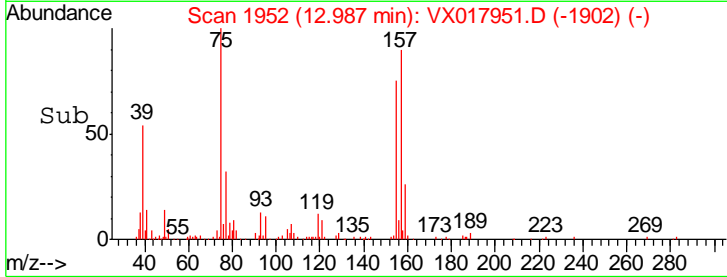
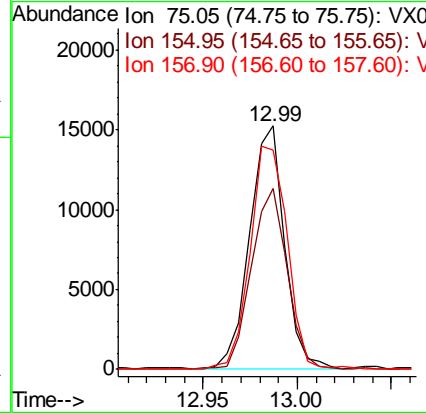
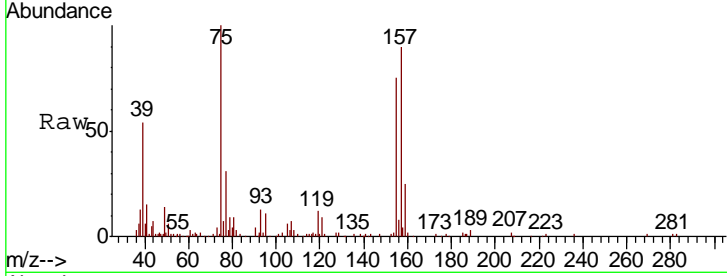




#67  
 1,2-Dibromo-3-chloropropane  
 Concen: 4.669 ug/L  
 RT: 12.99 min Scan# 1952  
 Delta R.T. 0.01 min  
 Lab File: VX017951.D  
 Acq: 17 Aug 2020 20:44

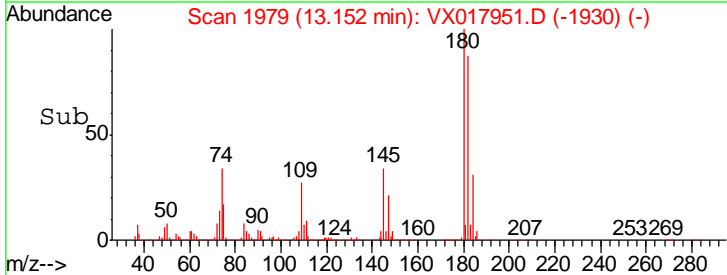
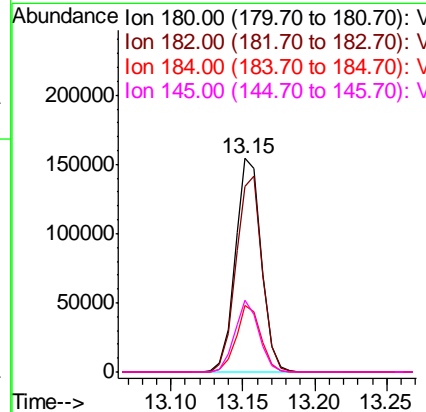
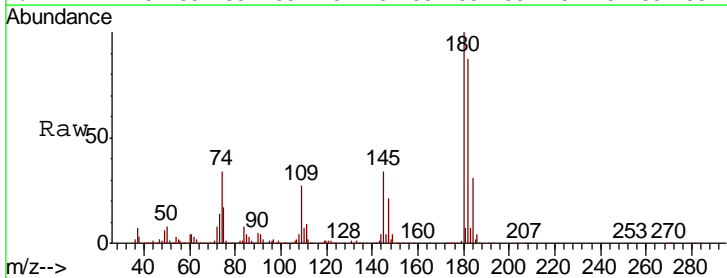
Instrument :  
 MSVOA\_X  
 ClientSampled :

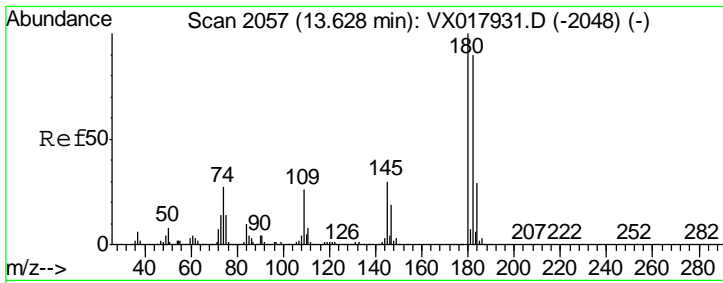
Tgt Ion	Resp	Lower	Upper
75	19661		
155	74.5	60.9	91.3
157	89.9	83.3	124.9



#68  
 1,3,5-Trichlorobenzene  
 Concen: 5.063 ug/L  
 RT: 13.15 min Scan# 1979  
 Delta R.T. -0.00 min  
 Lab File: VX017951.D  
 Acq: 17 Aug 2020 20:44

Tgt Ion	Resp	Lower	Upper
180	195133		
182	91.8	80.2	120.4
184	29.5	24.9	37.3
145	31.6	25.1	37.7

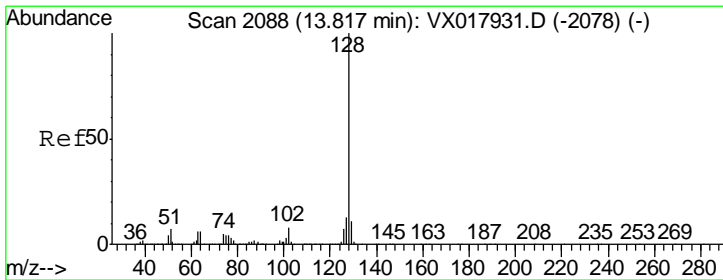
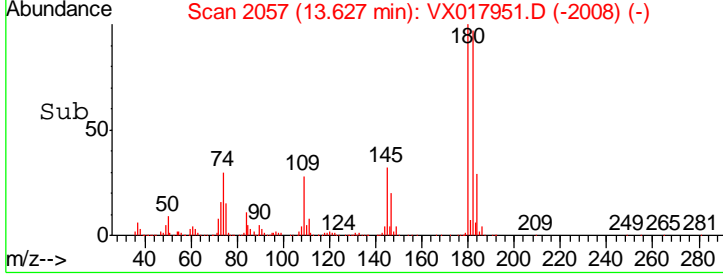
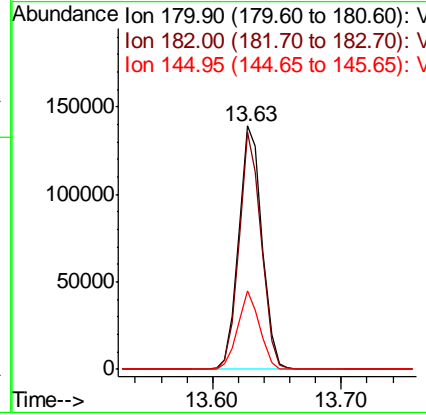
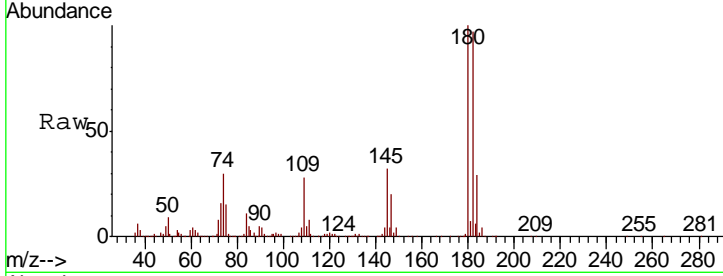




#69  
 1,2,4-trichlorobenzene  
 Concen: 5.138 ug/L  
 RT: 13.63 min Scan# 2057  
 Delta R.T. -0.00 min  
 Lab File: VX017951.D  
 Acq: 17 Aug 2020 20:44

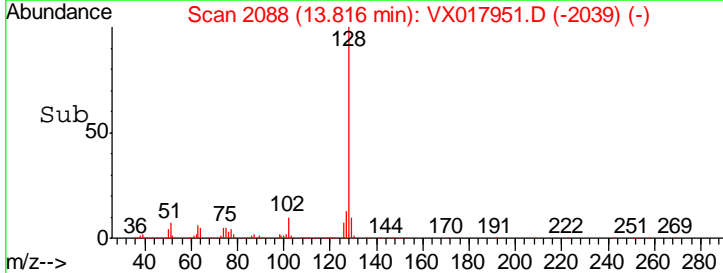
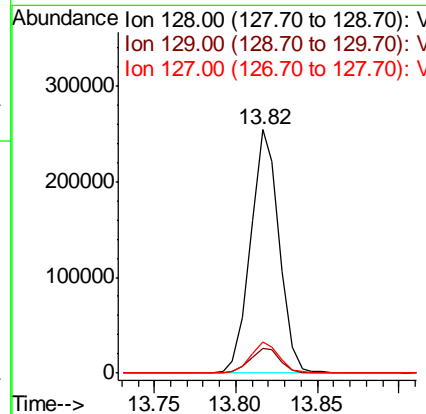
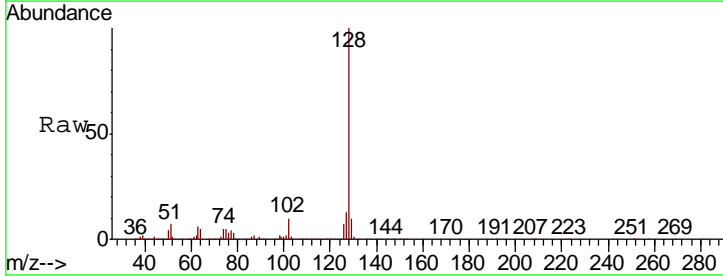
Instrument : MSVOA\_X  
 ClientSampled :

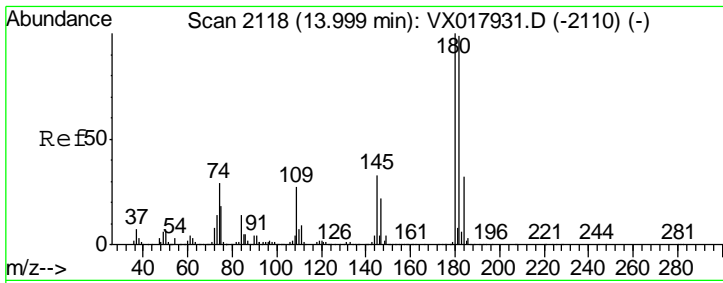
Tgt Ion	Resp	Lower	Upper
180	175289		
182	92.9	76.5	114.7
145	30.4	25.4	38.0



#70  
 Naphthalene  
 Concen: 4.943 ug/L  
 RT: 13.82 min Scan# 2088  
 Delta R.T. -0.00 min  
 Lab File: VX017951.D  
 Acq: 17 Aug 2020 20:44

Tgt Ion	Resp	Lower	Upper
128	309784		
129	10.7	8.4	12.6
127	12.9	11.0	16.4





#71  
 1,2,3-Trichlorobenzene  
 Concen: 5.229 ug/L  
 RT: 14.01 min Scan# 2119  
 Delta R.T. 0.01 min  
 Lab File: VX017951.D  
 Acq: 17 Aug 2020 20:44

Instrument :  
 MSVOA\_X  
 ClientSampled :

Tot Ion	180	Resp	167861
Ion Ratio	Lower	Upper	
180	100		
182	94.3	75.4	113.0
145	33.3	27.4	41.0

