

Data Path : Z:\VOASRV\HPCHEM1\MSVOA X\DATA\VX081720\  
 Data File : VX017948.D  
 Acq On : 17 Aug 2020 19:30  
 Operator : JC/SP  
 Sample : L3701-09  
 Misc : 25.0mL/MSVOA X/WATER  
 ALS Vial : 21 Sample Multiplier: 1

Instrument :  
 MSVOA\_X  
 ClientSampleId :  
 JLTX8

Integration Parameters: rteint.p  
 Integrator: RTE  
 Smoothing : ON  
 Sampling : 1  
 Start Thrs: 0.1  
 Stop Thrs : 0

Filtering: 5  
 Min Area: 3 % of largest Peak  
 Max Peaks: 100  
 Peak Location: TOP

If leading or trailing edge < 100 prefer < Baseline drop else tangent >  
 Peak separation: 5

Method : Z:\VOASRV\HPCHEM1\MSVOA\_X\METHOD\SOMXTR080720WMA.M  
 Title : TRACE VOA SOM01.0

Signal : TIC

peak #	R.T. min	first scan	max scan	last scan	PK TY	peak height	corr. area	corr. % max.	% of total
1	1.319	32	38	40	rBV6	12113	21728	2.15%	0.266%
2	1.386	46	49	57	rVB	136712	130383	12.89%	1.596%
3	1.496	63	67	70	rBV6	7164	11277	1.11%	0.138%
4	1.691	95	99	108	rVB	106629	133951	13.24%	1.640%
5	2.343	201	206	214	rVB	211571	344846	34.08%	4.222%
6	4.538	556	566	578	rBV	141649	428273	42.33%	5.243%
7	5.141	652	665	679	rBV2	144209	443971	43.88%	5.435%
8	6.050	801	814	828	rVV3	340083	1000610	98.89%	12.250%
9	6.830	932	942	954	rBV	238465	588450	58.16%	7.204%
10	7.171	993	998	1005	rBV10	9432	21755	2.15%	0.266%
11	7.366	1020	1030	1042	rBV	221813	498427	49.26%	6.102%
12	8.372	1187	1195	1205	rBV	121416	199117	19.68%	2.438%
13	8.695	1241	1248	1256	rBV	452967	718747	71.03%	8.799%
14	8.994	1291	1297	1304	rBV	93225	135274	13.37%	1.656%
15	9.427	1362	1368	1380	rBV	750921	1011841	100.00%	12.388%
16	10.098	1470	1478	1484	rBV	542170	730512	72.20%	8.943%
17	11.232	1658	1664	1672	rVB	232059	293335	28.99%	3.591%
18	11.354	1679	1684	1689	rVB5	8880	13479	1.33%	0.165%
19	12.061	1795	1800	1811	rVB	543434	666012	65.82%	8.154%
20	12.262	1827	1833	1840	rBV3	23171	43770	4.33%	0.536%
21	12.359	1843	1849	1856	rVV	550706	703025	69.48%	8.607%
22	12.884	1931	1935	1940	rBV8	9477	19108	1.89%	0.234%
23	16.151	2466	2471	2474	rBV7	5080	10328	1.02%	0.126%

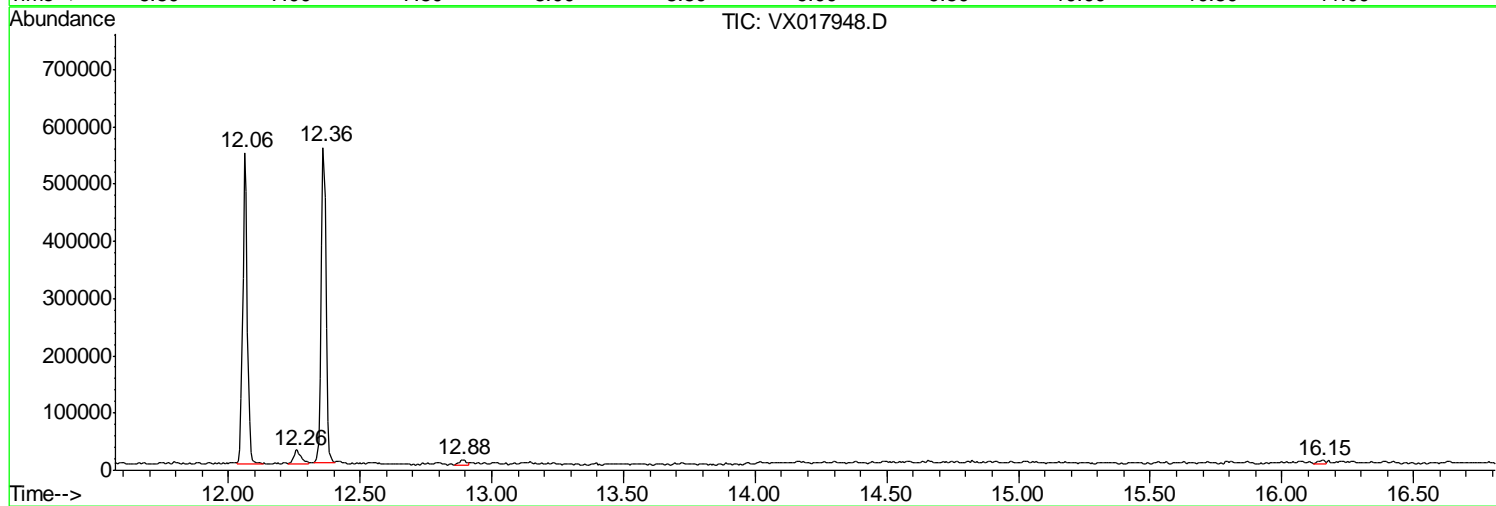
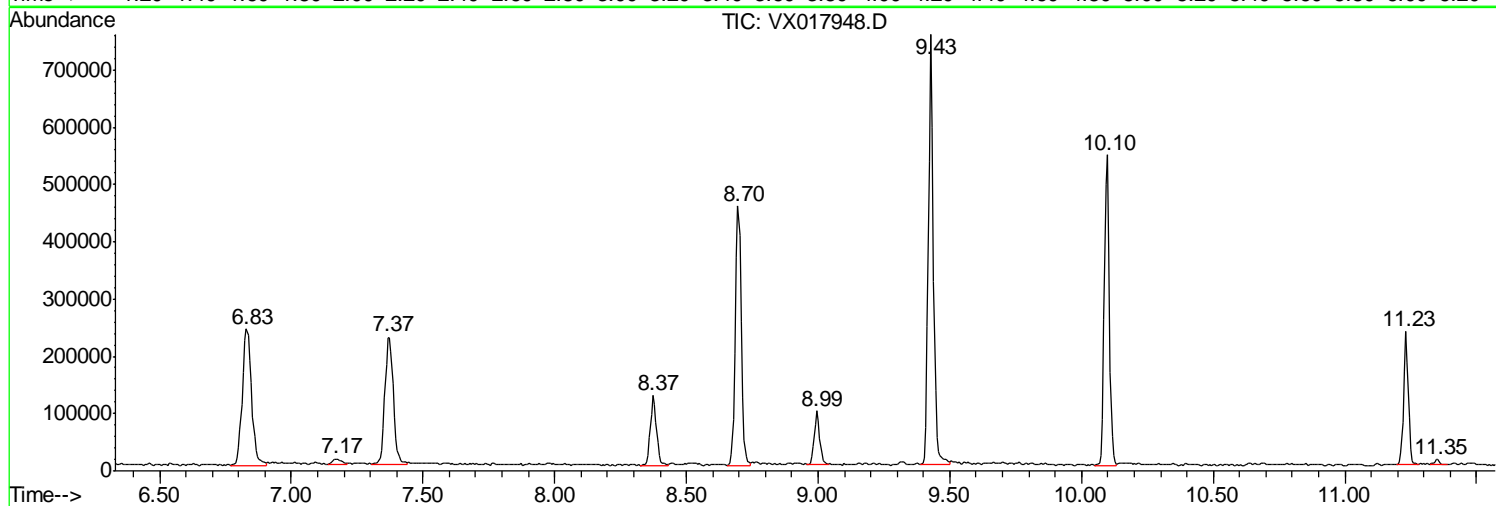
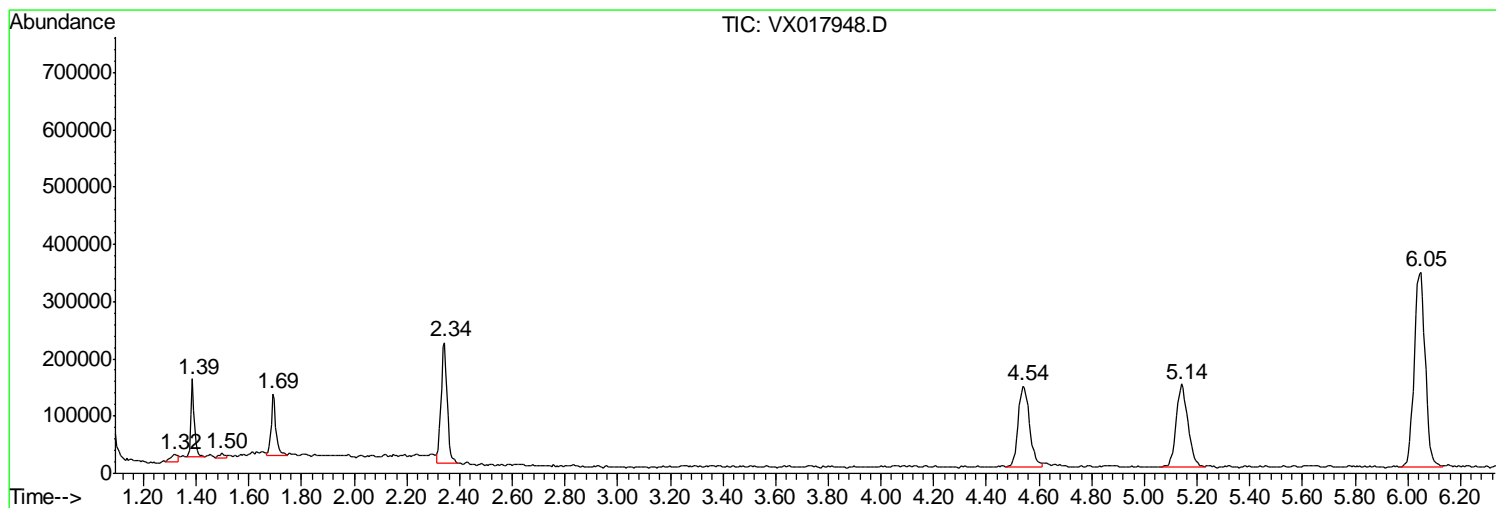
Sum of corrected areas: 8168219

Data Path : Z:\VOASRV\HPCHEM1\MSVOA X\DATA\VX081720\  
Data File : VX017948.D  
Acq On : 17 Aug 2020 19:30  
Operator : JC/SP  
Sample : L3701-09  
Misc : 25.0mL/MSVOA X/WATER  
ALS Vial : 21 Sample Multiplier: 1

Instrument :  
MSVOA\_X  
ClientSampled :  
JLTX8

Quant Method : Z:\VOASRV\HPCHEM1\MSVOA\_X\METHOD\SOMXTR080720WMA.M  
Quant Title : TRACE VOA SOM01.0

TIC Library : C:\DATABASE\NIST11.L  
TIC Integration Parameters: LSCINT.P



Data Path : Z:\VOASRV\HPCHEM1\MSVOA\_X\DATA\VX081720\  
Data File : VX017948.D  
Acq On : 17 Aug 2020 19:30  
Operator : JC/SP  
Sample : L3701-09  
Misc : 25.0mL/MSVOA\_X/WATER  
ALS Vial : 21 Sample Multiplier: 1

Instrument :  
MSVOA\_X  
ClientSampleId :  
JLTX8

Quant Method : Z:\VOASRV\HPCHEM1\MSVOA\_X\METHOD\SOMXTR080720WMA.M  
Quant Title : TRACE VOA SOM01.0

TIC Library : C:\DATABASE\NIST11.L  
TIC Integration Parameters: LSCINT.P

No Library Search Compounds Detected

\*\*\*\*\*

Data Path : Z:\VOASRV\HPCHEM1\MSVOA\_X\DATA\VX081720\  
Data File : VX017948.D  
Acq On : 17 Aug 2020 19:30  
Operator : JC/SP  
Sample : L3701-09  
Misc : 25.0mL/MSVOA\_X/WATER  
ALS Vial : 21 Sample Multiplier: 1

Instrument :  
MSVOA\_X  
ClientSampleId :  
JLTX8

Quant Method : Z:\VOASRV\HPCHEM1\MSVOA\_X\METHOD\SOMXTR080720WMA.M  
Quant Title : TRACE VOA SOM01.0

TIC Library : C:\DATABASE\NIST11.L  
TIC Integration Parameters: LSCINT.P

TIC Top Hit name	RT	EstConc	Units	Response	--Internal Standard--			
					#	RT	Resp	Conc

---