

Data Path : Z:\voasrv\HPCHEM1\MSVOA_X\Data\VX081721\
 Data File : VX023798.D
 Acq On : 18 Aug 2021 05:50
 Operator : JC/MD
 Sample : M3429-05
 Misc : 5.0mL/MSVOA_X/WATER
 ALS Vial : 49 Sample Multiplier: 1

Instrument :
 MSVOA_X
 ClientSampled :
 WC-2

Quant Time: Aug 18 07:05:23 2021
 Quant Method : Z:\voasrv\HPCHEM1\MSVOA_X\Method\82X081721W.M
 Quant Title : SW846 8260
 QLast Update : Tue Aug 17 11:57:51 2021
 Response via : Initial Calibration

Compound	R.T.	QIon	Response	Conc	Units	Dev(Min)

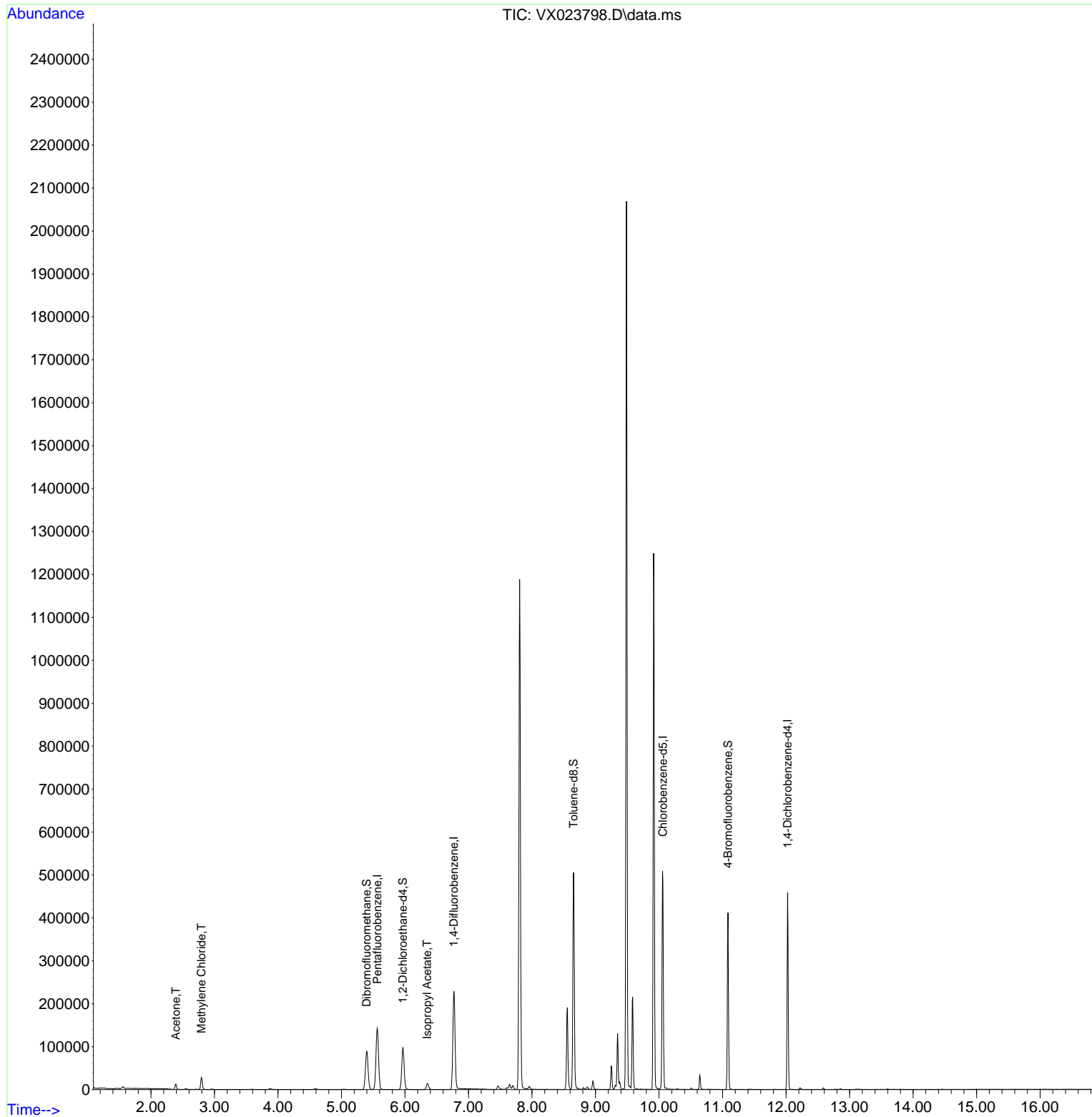
Internal Standards						
1) Pentafluorobenzene	5.562	168	134901	50.000	ug/l	0.00
34) 1,4-Difluorobenzene	6.769	114	230105	50.000	ug/l	0.00
63) Chlorobenzene-d5	10.061	117	224053	50.000	ug/l	0.00
72) 1,4-Dichlorobenzene-d4	12.024	152	89494	50.000	ug/l	0.00
System Monitoring Compounds						
33) 1,2-Dichloroethane-d4	5.964	65	95716	50.837	ug/l	0.00
Spiked Amount	50.000	Range	78 - 117	Recovery	=	101.680%
35) Dibromofluoromethane	5.397	113	75086	49.301	ug/l	0.00
Spiked Amount	50.000	Range	75 - 124	Recovery	=	98.600%
50) Toluene-d8	8.653	98	293973	50.714	ug/l	0.00
Spiked Amount	50.000	Range	92 - 112	Recovery	=	101.420%
62) 4-Bromofluorobenzene	11.085	95	98642	46.226	ug/l	0.00
Spiked Amount	50.000	Range	83 - 123	Recovery	=	92.460%
Target Compounds						
						Qvalue
16) Acetone	2.392	43	13077	15.534	ug/l	91
20) Methylene Chloride	2.794	84	12260	7.624	ug/l #	87
43) Isopropyl Acetate	6.348	43	19175	4.680	ug/l	93

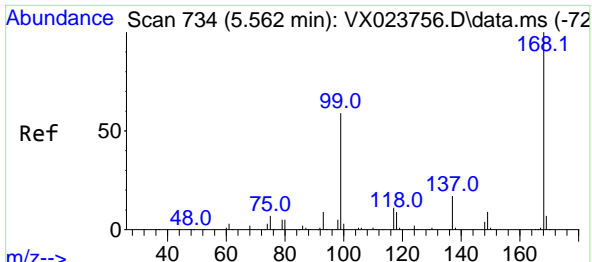
(#) = qualifier out of range (m) = manual integration (+) = signals summed

Data Path : Z:\voasrv\HPCHEM1\MSVOA_X\Data\VX081721\
 Data File : VX023798.D
 Acq On : 18 Aug 2021 05:50
 Operator : JC/MD
 Sample : M3429-05
 Misc : 5.0mL/MSVOA_X/WATER
 ALS Vial : 49 Sample Multiplier: 1

Instrument :
 MSVOA_X
 ClientSampleId :
 WC-2

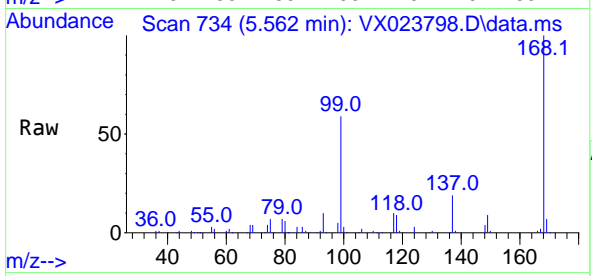
Quant Time: Aug 18 07:05:23 2021
 Quant Method : Z:\voasrv\HPCHEM1\MSVOA_X\Method\82X081721W.M
 Quant Title : SW846 8260
 QLast Update : Tue Aug 17 11:57:51 2021
 Response via : Initial Calibration



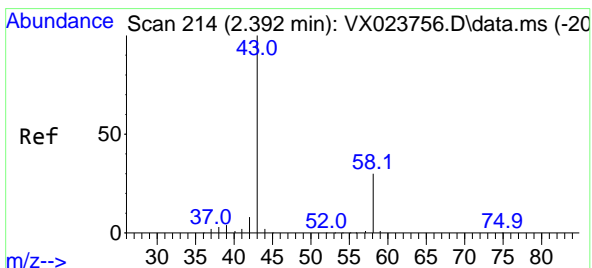
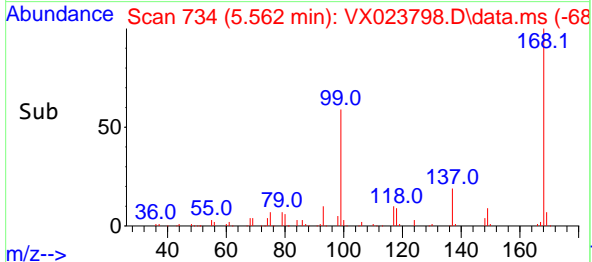
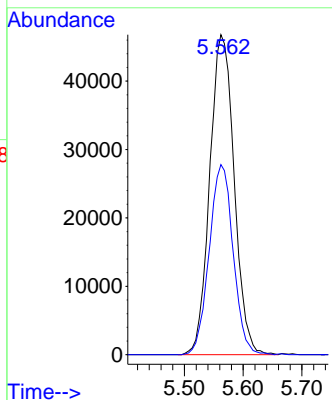


#1
 Pentafluorobenzene
 Concen: 50.000 ug/l
 RT: 5.562 min Scan# 734
 Delta R.T. -0.000 min
 Lab File: VX023798.D
 Acq: 18 Aug 2021 05:50

Instrument :
 MSVOA_X
 ClientSampled :
 WC-2

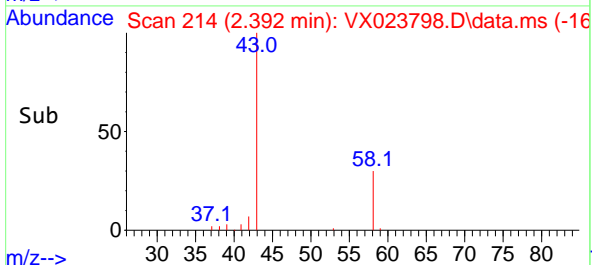
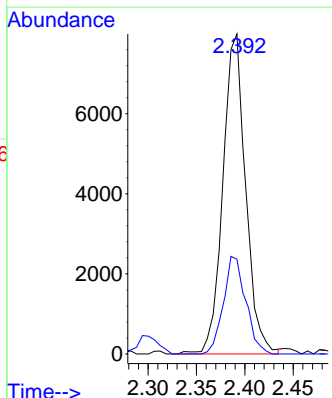
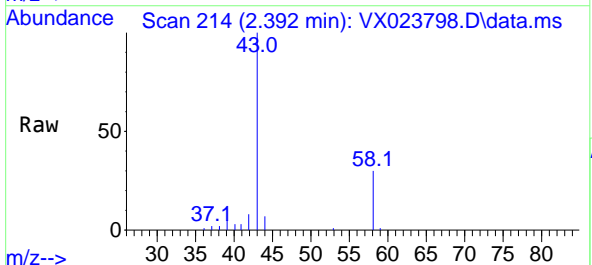


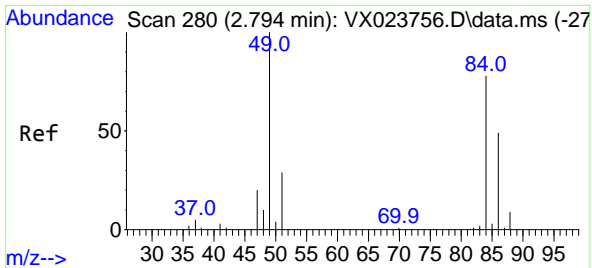
Tgt Ion: 168 Resp: 134901
 Ion Ratio Lower Upper
 168 100
 99 59.4 45.8 68.6



#16
 Acetone
 Concen: 15.534 ug/l
 RT: 2.392 min Scan# 214
 Delta R.T. -0.000 min
 Lab File: VX023798.D
 Acq: 18 Aug 2021 05:50

Tgt Ion: 43 Resp: 13077
 Ion Ratio Lower Upper
 43 100
 58 29.6 27.8 41.8



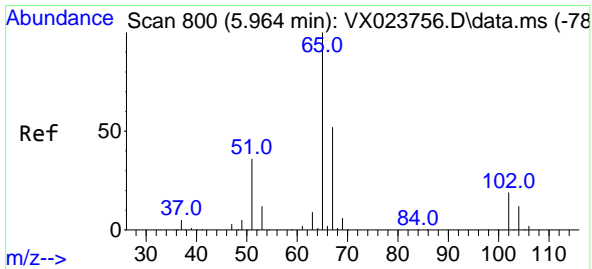
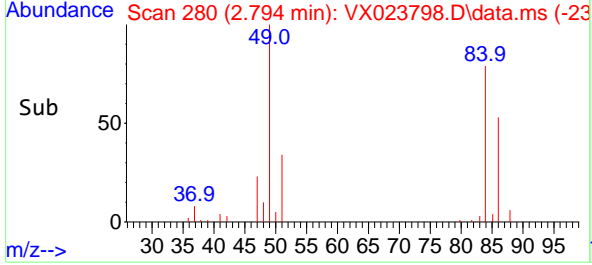
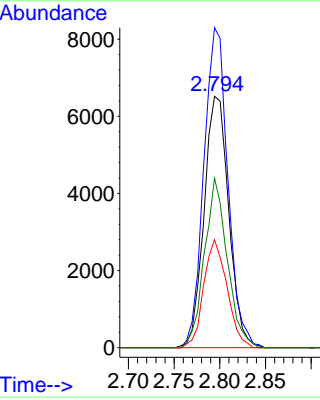
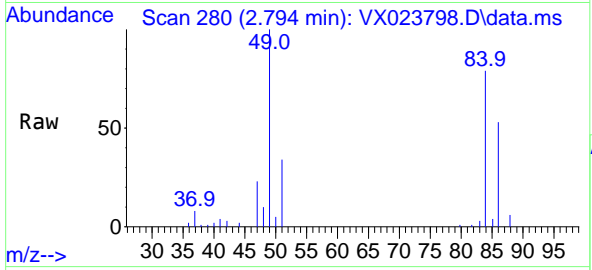


#20
 Methylene Chloride
 Concen: 7.624 ug/l
 RT: 2.794 min Scan# 280
 Delta R.T. 0.000 min
 Lab File: VX023798.D
 Acq: 18 Aug 2021 05:50

Instrument :
 MSVOA_X
 ClientSampled :
 WC-2

Tgt Ion: 84 Resp: 12260

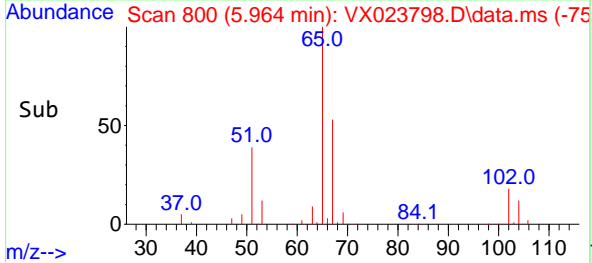
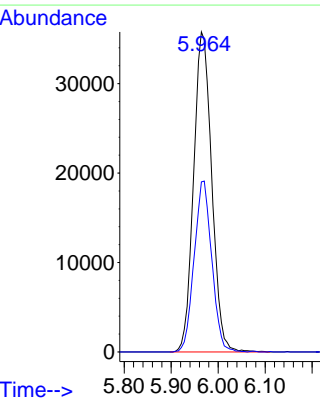
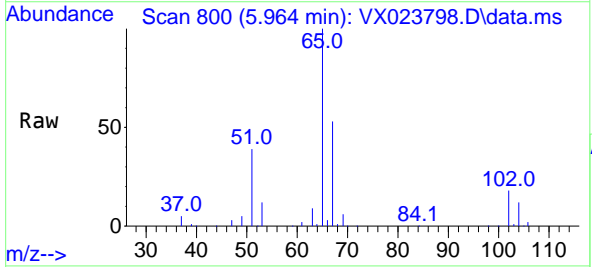
Ion	Ratio	Lower	Upper
84	100		
49	127.3	88.6	132.8
51	42.9	27.0	40.6#
86	67.5	50.3	75.5

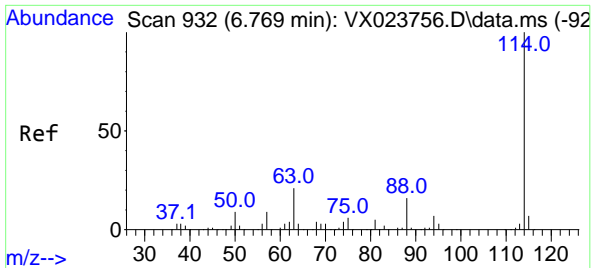


#33
 1,2-Dichloroethane-d4
 Concen: 50.837 ug/l
 RT: 5.964 min Scan# 800
 Delta R.T. 0.000 min
 Lab File: VX023798.D
 Acq: 18 Aug 2021 05:50

Tgt Ion: 65 Resp: 95716

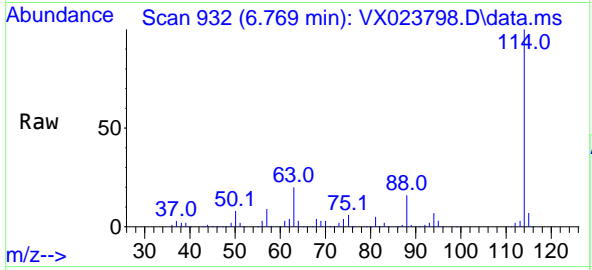
Ion	Ratio	Lower	Upper
65	100		
67	52.0	0.0	105.4





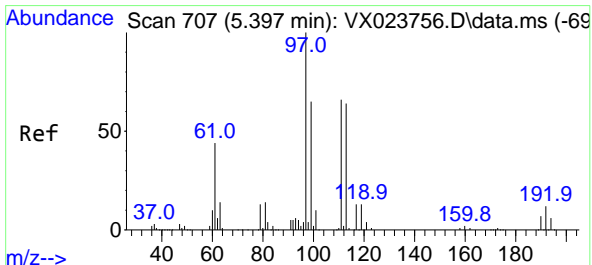
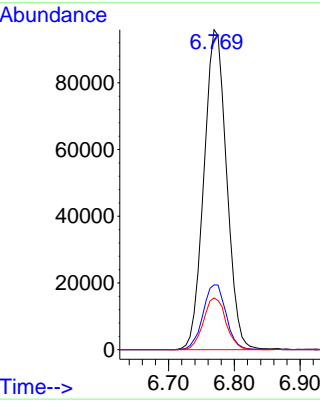
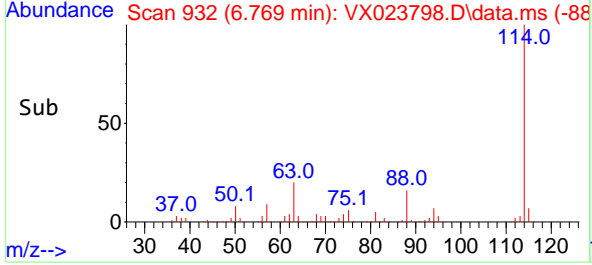
#34
 1,4-Difluorobenzene
 Concen: 50.000 ug/l
 RT: 6.769 min Scan# 932
 Delta R.T. 0.000 min
 Lab File: VX023798.D
 Acq: 18 Aug 2021 05:50

Instrument :
 MSVOA_X
 ClientSampled :
 WC-2

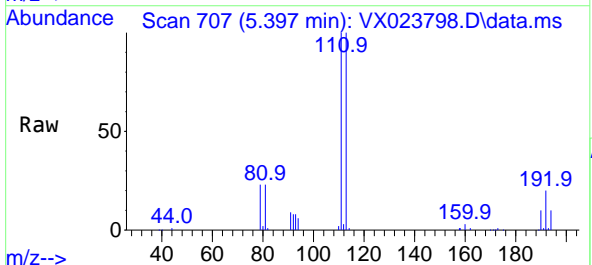


Tgt Ion:114 Resp: 230105

Ion	Ratio	Lower	Upper
114	100		
63	20.3	0.0	40.8
88	16.2	0.0	32.8

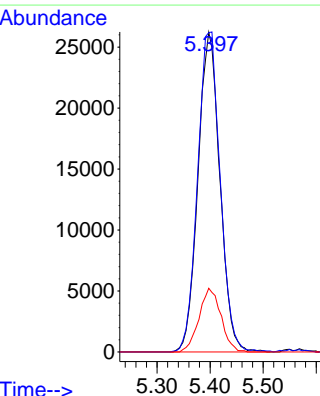
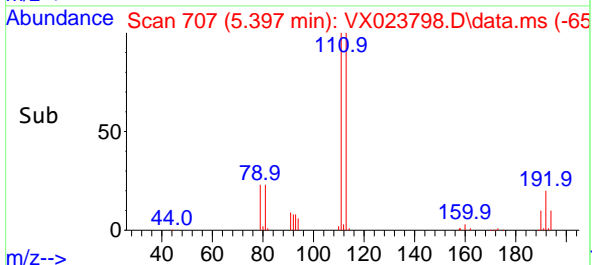


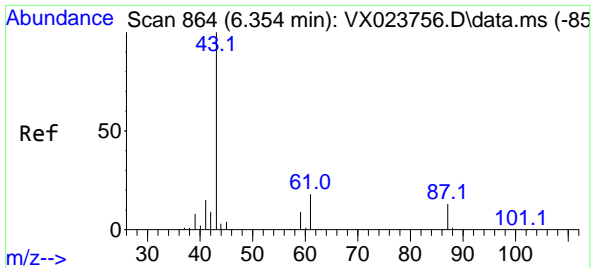
#35
 Dibromofluoromethane
 Concen: 49.301 ug/l
 RT: 5.397 min Scan# 707
 Delta R.T. 0.000 min
 Lab File: VX023798.D
 Acq: 18 Aug 2021 05:50



Tgt Ion:113 Resp: 75086

Ion	Ratio	Lower	Upper
113	100		
111	103.3	81.9	122.9
192	20.0	16.7	25.1



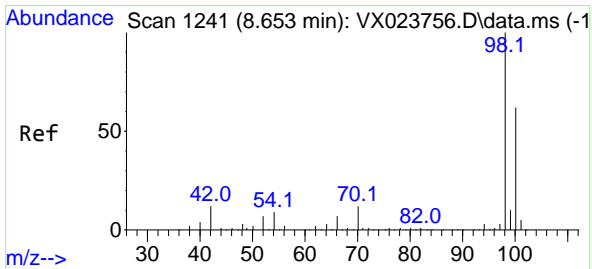
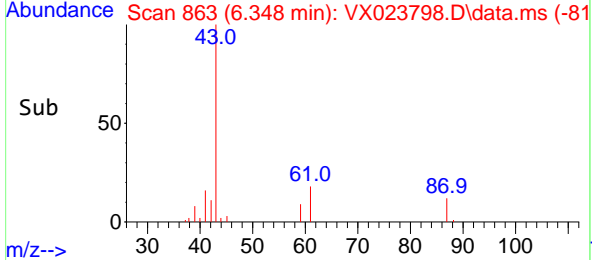
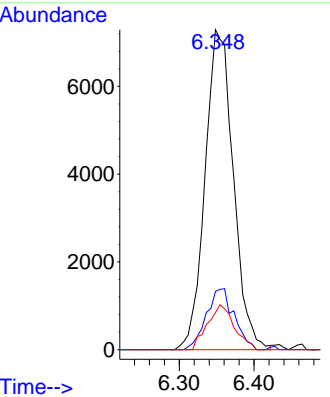
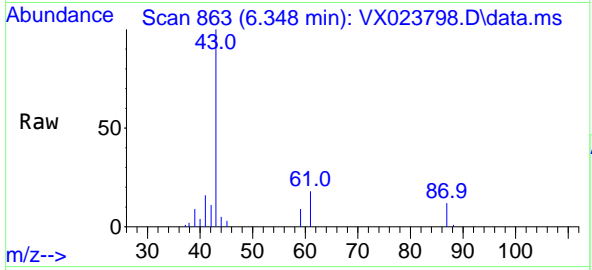


#43
 Isopropyl Acetate
 Concen: 4.680 ug/l
 RT: 6.348 min Scan# 863
 Delta R.T. -0.006 min
 Lab File: VX023798.D
 Acq: 18 Aug 2021 05:50

Instrument :
 MSVOA_X
 ClientSampled :
 WC-2

Tgt Ion: 43 Resp: 19175

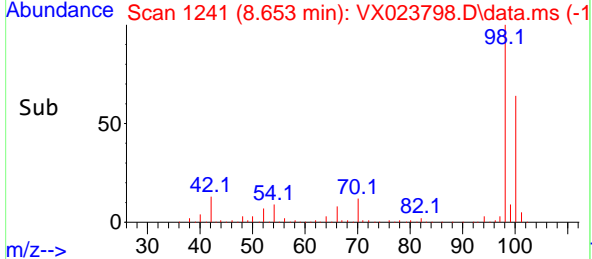
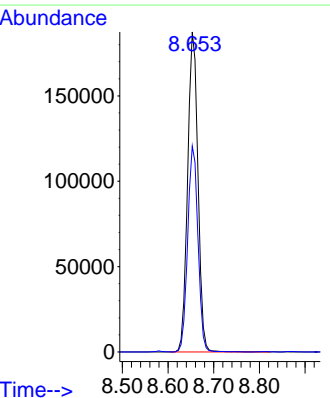
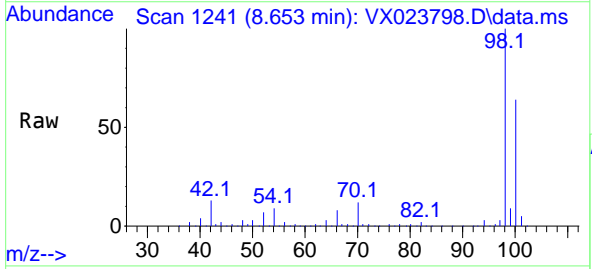
Ion	Ratio	Lower	Upper
43	100		
61	18.7	18.2	27.4
87	13.3	12.5	18.7

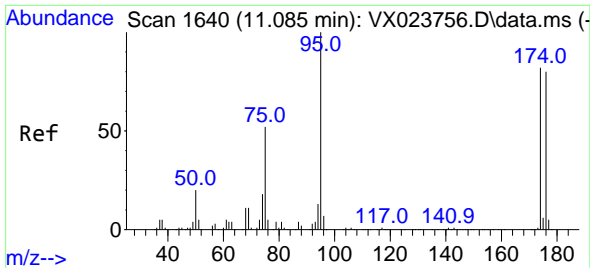


#50
 Toluene-d8
 Concen: 50.714 ug/l
 RT: 8.653 min Scan# 1241
 Delta R.T. -0.000 min
 Lab File: VX023798.D
 Acq: 18 Aug 2021 05:50

Tgt Ion: 98 Resp: 293973

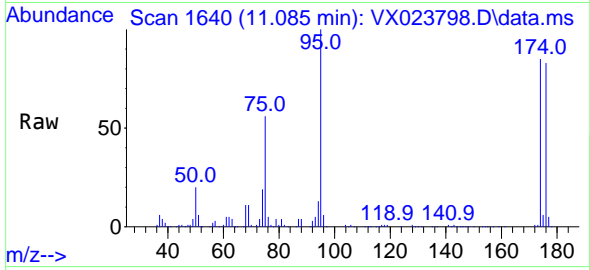
Ion	Ratio	Lower	Upper
98	100		
100	64.1	51.9	77.9



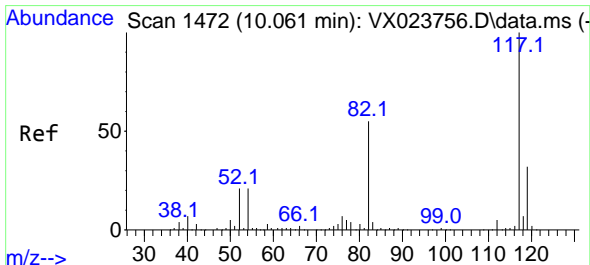
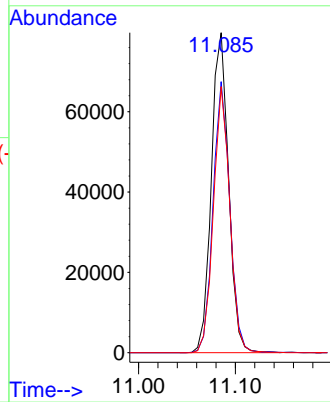
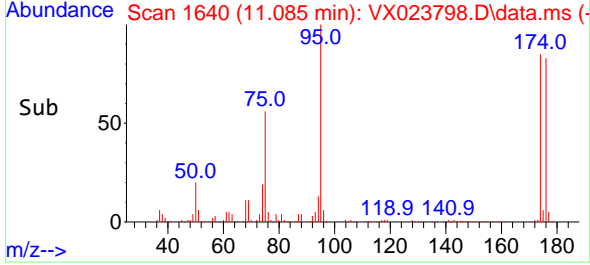


#62
 4-Bromofluorobenzene
 Concen: 46.226 ug/l
 RT: 11.085 min Scan# 1640
 Delta R.T. 0.000 min
 Lab File: VX023798.D
 Acq: 18 Aug 2021 05:50

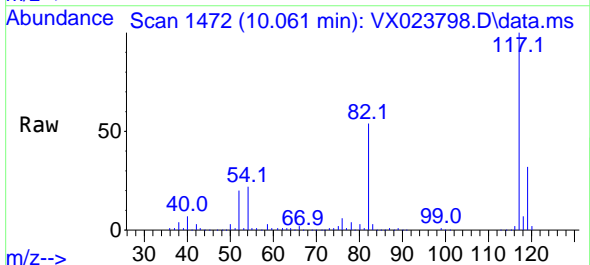
Instrument :
 MSVOA_X
 ClientSampled :
 WC-2



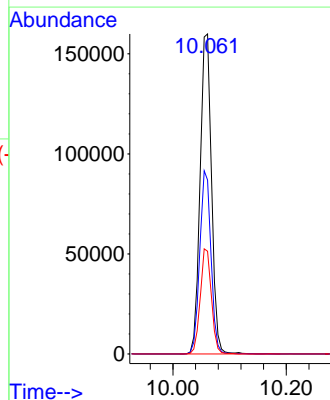
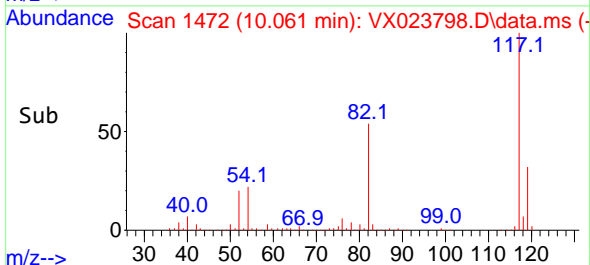
Tgt Ion: 95 Resp: 98642
 Ion Ratio Lower Upper
 95 100
 174 82.2 0.0 154.6
 176 79.1 0.0 155.8

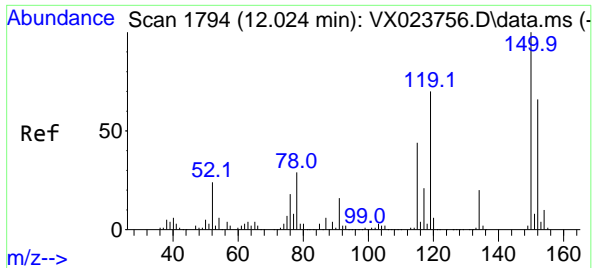


#63
 Chlorobenzene-d5
 Concen: 50.000 ug/l
 RT: 10.061 min Scan# 1472
 Delta R.T. 0.000 min
 Lab File: VX023798.D
 Acq: 18 Aug 2021 05:50



Tgt Ion: 117 Resp: 224053
 Ion Ratio Lower Upper
 117 100
 82 54.4 47.4 71.2
 119 32.1 26.6 39.8





#72
 1,4-Dichlorobenzene-d4
 Concen: 50.000 ug/l
 RT: 12.024 min Scan# 1794
 Delta R.T. 0.000 min
 Lab File: VX023798.D
 Acq: 18 Aug 2021 05:50

Instrument :
 MSVOA_X
 ClientSampled :
 WC-2

Tgt Ion:152 Resp: 89494

Ion	Ratio	Lower	Upper
152	100		
115	59.4	41.1	123.3
150	158.2	0.0	349.0

