

Data Path : Z:\voasrv\HPCHEM1\MSVOA_X\Data\VX081823\
 Data File : VX037108.D
 Acq On : 19 Aug 2023 04:49
 Operator : JC/MD
 Sample : 04024-20RE
 Misc : 5.0mL/MSVOA_X/WATER
 ALS Vial : 43 Sample Multiplier: 1

Instrument :
 MSVOA_X
ClientSampleId :
 RE108D1-20230815

Quant Time: Aug 21 01:41:03 2023
 Quant Method : Z:\voasrv\HPCHEM1\MSVOA_X\Method\82X081723W.M
 Quant Title : SW846 8260
 QLast Update : Fri Aug 18 09:30:38 2023
 Response via : Initial Calibration

Compound	R.T.	QIon	Response	Conc	Units	Dev(Min)

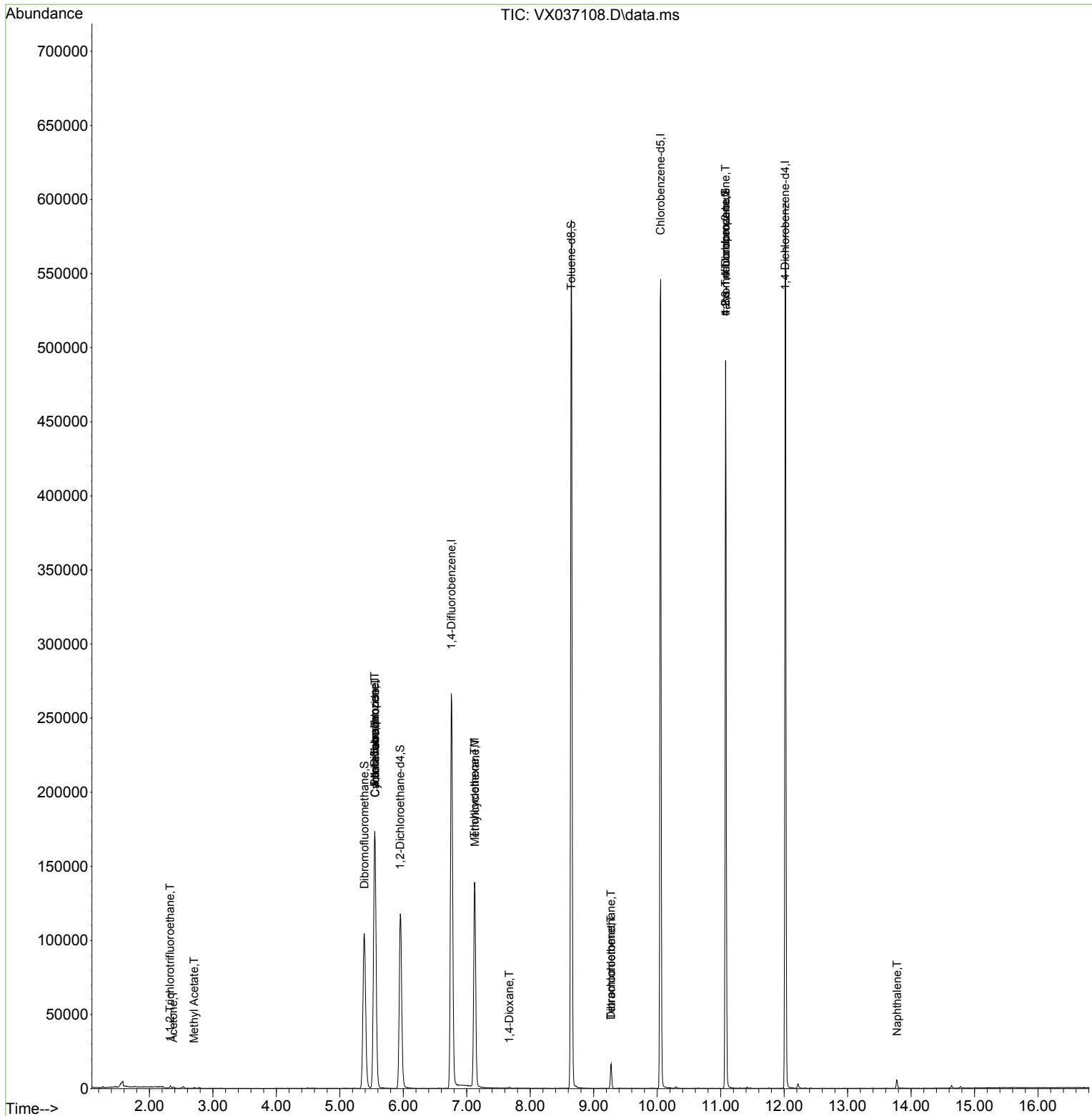
Internal Standards						
1) Pentafluorobenzene	5.550	168	162420	50.000	ug/l	0.00
34) 1,4-Difluorobenzene	6.757	114	276854	50.000	ug/l	0.00
63) Chlorobenzene-d5	10.055	117	255972	50.000	ug/l	0.00
72) 1,4-Dichlorobenzene-d4	12.018	152	118915	50.000	ug/l	0.00
System Monitoring Compounds						
33) 1,2-Dichloroethane-d4	5.952	65	120052	51.270	ug/l	0.00
Spiked Amount	50.000	Range 78 - 117	Recovery	=	102.540%	
35) Dibromofluoromethane	5.385	113	93638	51.070	ug/l	0.00
Spiked Amount	50.000	Range 75 - 124	Recovery	=	102.140%	
50) Toluene-d8	8.647	98	345495	51.947	ug/l	0.00
Spiked Amount	50.000	Range 92 - 112	Recovery	=	103.900%	
62) 4-Bromofluorobenzene	11.079	95	132406	50.658	ug/l	0.00
Spiked Amount	50.000	Range 83 - 123	Recovery	=	101.320%	
Target Compounds						
						Qvalue
9) 1,1,2-Trichlorotrifluo...	2.325	101	723	0.421	ug/l	94
16) Acetone	2.374	43	860	0.939	ug/l #	88
18) Methyl Acetate	2.703	43	835	0.242	ug/l #	80
31) Cyclohexane	5.556	56	3421	1.299	ug/l #	1
36) 1,1-Dichloropropene	5.550	75	12908	4.955	ug/l #	51
38) Carbon Tetrachloride	5.556	117	17216	6.084	ug/l #	14
39) Methylcyclohexane	7.129	83	670	0.245	ug/l #	1
44) Trichloroethene	7.123	130	54234	25.601	ug/l	98
49) 1,4-Dioxane	7.671	88	609	10.976	ug/l #	54
60) Dibromochloromethane	9.275	129	3060	1.430	ug/l #	11
64) Tetrachloroethene	9.275	164	2928	1.568	ug/l	87
76) 1,2,3-Trichloropropane	11.079	75	68155	26.912	ug/l #	38
81) trans-1,4-Dichloro-2-b...	11.079	75	68155	75.167	ug/l #	5
95) Naphthalene	13.780	128	4879	0.492	ug/l	98

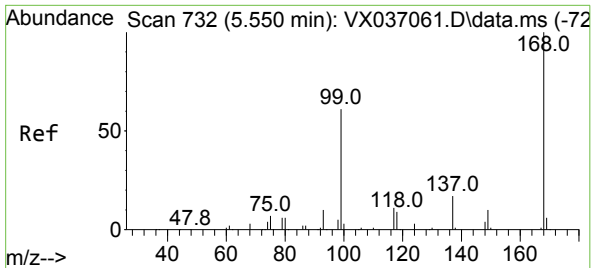
(#) = qualifier out of range (m) = manual integration (+) = signals summed

Data Path : Z:\voasrv\HPCHEM1\MSVOA_X\Data\VX081823\
 Data File : VX037108.D
 Acq On : 19 Aug 2023 04:49
 Operator : JC/MD
 Sample : 04024-20RE
 Misc : 5.0mL/MSVOA_X/WATER
 ALS Vial : 43 Sample Multiplier: 1

Instrument :
 MSVOA_X
 ClientSampleId :
 RE108D1-20230815

Quant Time: Aug 21 01:41:03 2023
 Quant Method : Z:\voasrv\HPCHEM1\MSVOA_X\Method\82X081723W.M
 Quant Title : SW846 8260
 QLast Update : Fri Aug 18 09:30:38 2023
 Response via : Initial Calibration

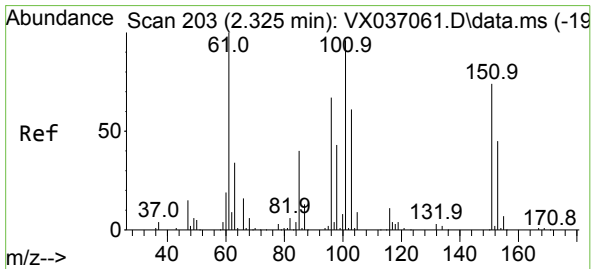
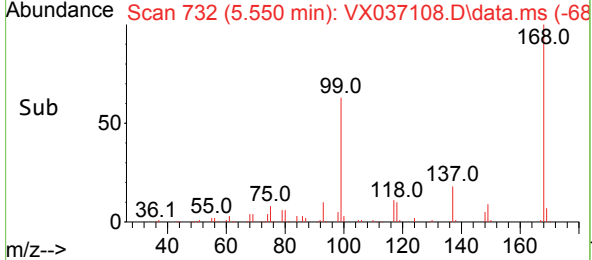
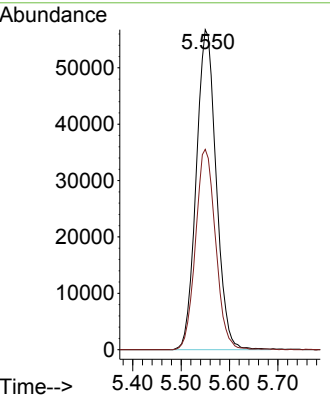
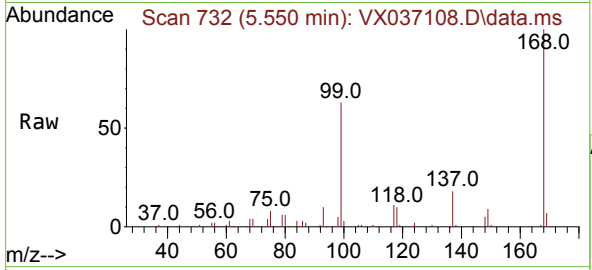




#1
 Pentafluorobenzene
 Concen: 50.000 ug/l
 RT: 5.550 min Scan# 71
 Delta R.T. -0.000 min
 Lab File: VX037108.D
 Acq: 19 Aug 2023 04:49

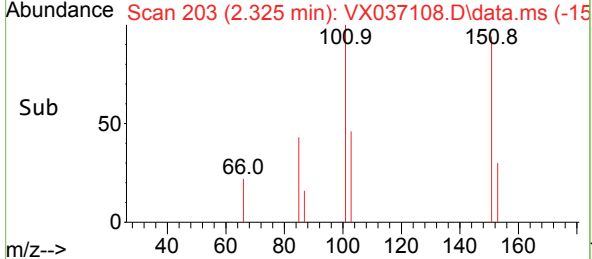
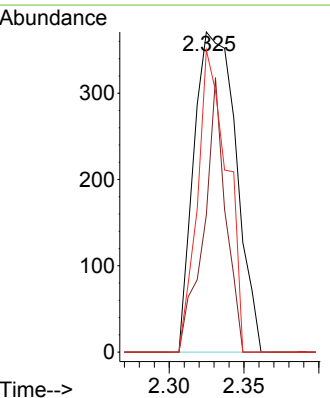
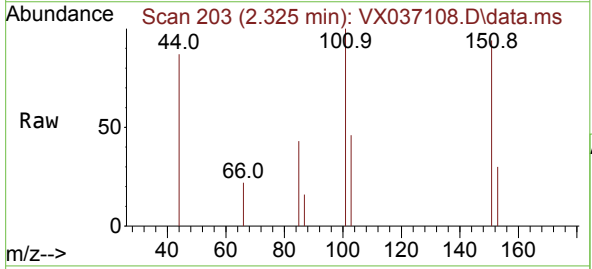
Instrument : MSVOA_X
 ClientSampleId : RE108D1-20230815

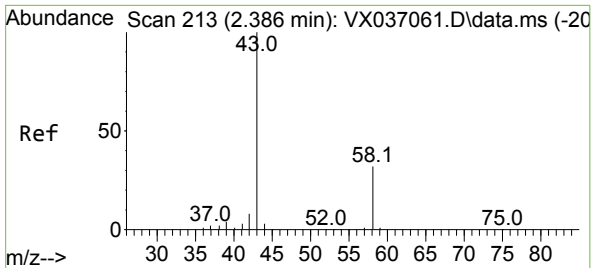
Tgt Ion:168 Resp: 162420
 Ion Ratio Lower Upper
 168 100
 99 62.6 56.6 85.0



#9
 1,1,2-Trichlorotrifluoroethane
 Concen: 0.421 ug/l
 RT: 2.325 min Scan# 203
 Delta R.T. 0.000 min
 Lab File: VX037108.D
 Acq: 19 Aug 2023 04:49

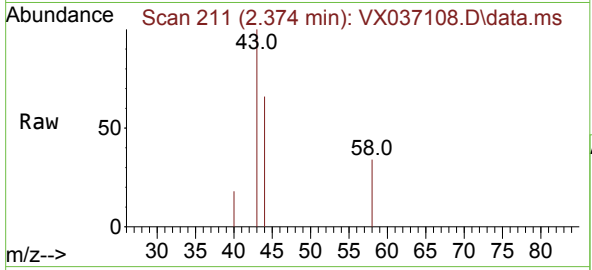
Tgt Ion:101 Resp: 723
 Ion Ratio Lower Upper
 101 100
 85 44.5 37.0 55.6
 151 66.7 58.6 87.8



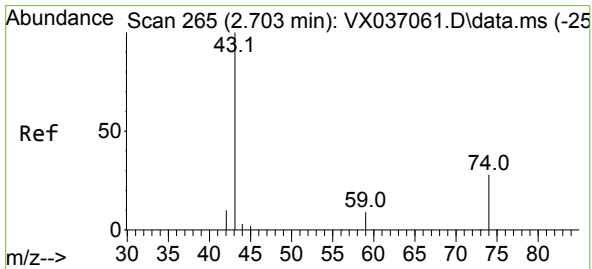
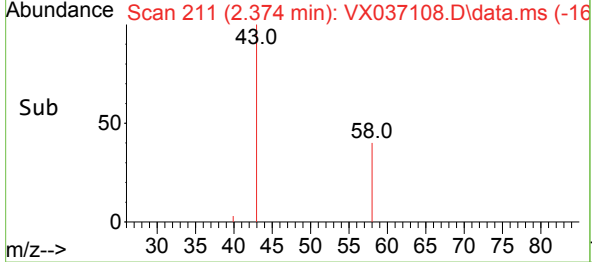
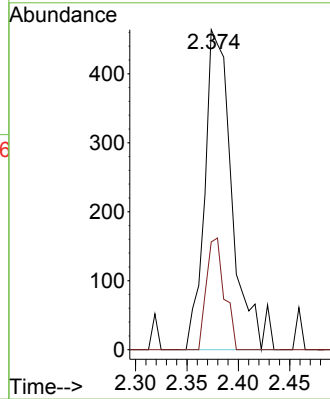


#16
 Acetone
 Concen: 0.939 ug/l
 RT: 2.374 min Scan# 211
 Delta R.T. -0.012 min
 Lab File: VX037108.D
 Acq: 19 Aug 2023 04:49

Instrument : MSVOA_X
 ClientSampleId : RE108D1-20230815

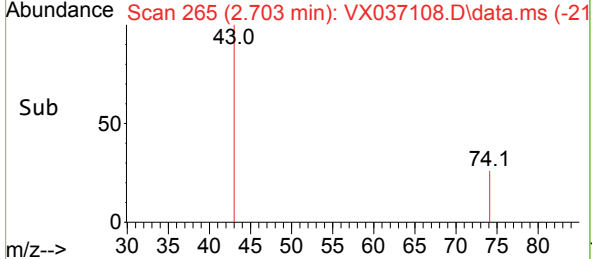
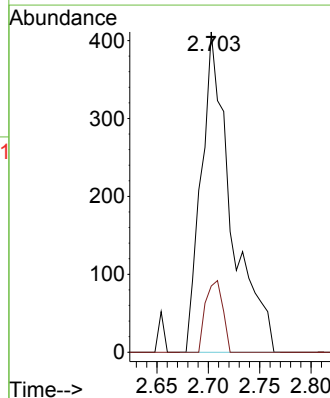
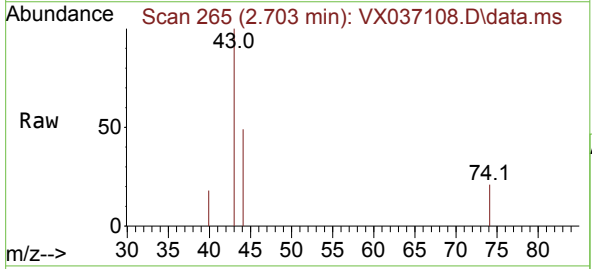


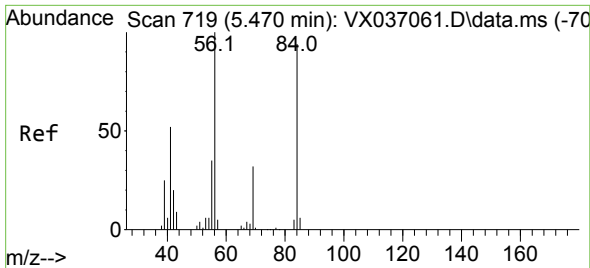
Tgt Ion: 43 Resp: 860
 Ion Ratio Lower Upper
 43 100
 58 33.6 21.9 32.9#



#18
 Methyl Acetate
 Concen: 0.242 ug/l
 RT: 2.703 min Scan# 265
 Delta R.T. 0.000 min
 Lab File: VX037108.D
 Acq: 19 Aug 2023 04:49

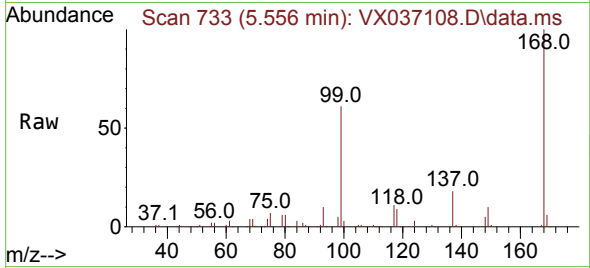
Tgt Ion: 43 Resp: 835
 Ion Ratio Lower Upper
 43 100
 74 12.8 17.8 26.8#



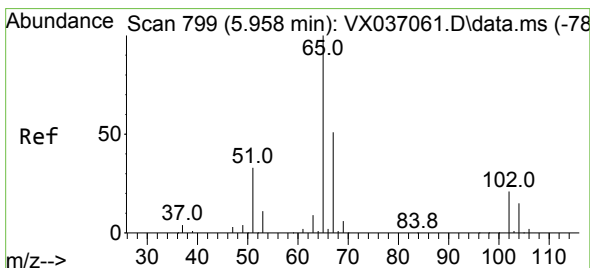
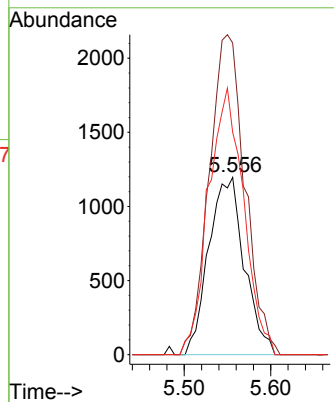
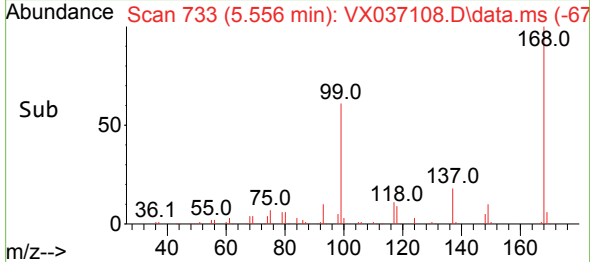


#31
 Cyclohexane
 Concen: 1.299 ug/l
 RT: 5.556 min Scan# 719
 Delta R.T. 0.085 min
 Lab File: VX037108.D
 Acq: 19 Aug 2023 04:49

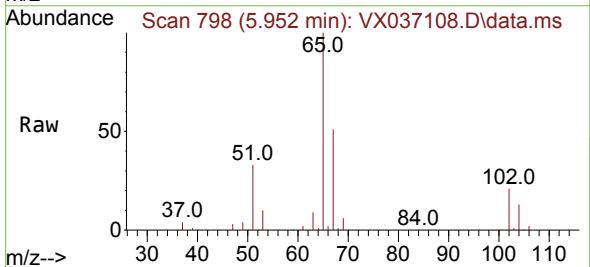
Instrument : MSVOA_X
 ClientSampleId : RE108D1-20230815



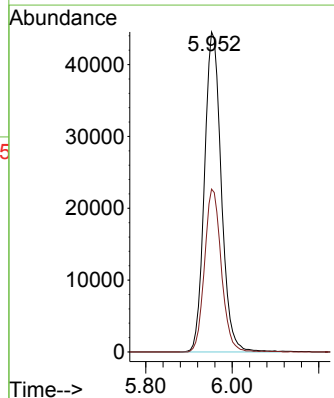
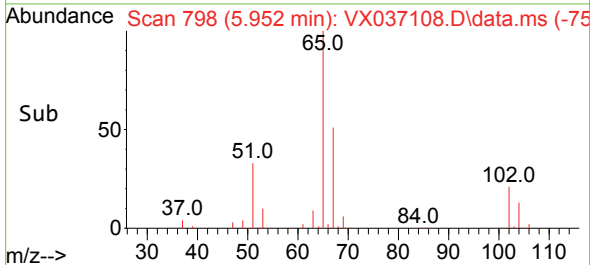
Tgt Ion: 56 Resp: 3421
 Ion Ratio Lower Upper
 56 100
 69 175.8 23.4 35.2#
 84 125.5 65.9 98.9#

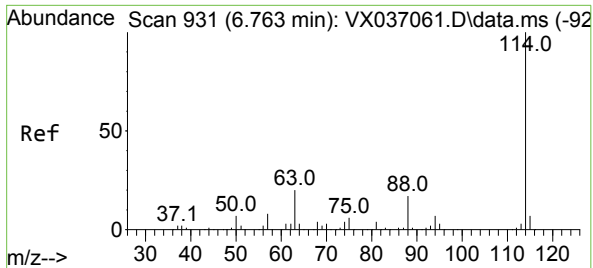


#33
 1,2-Dichloroethane-d4
 Concen: 51.270 ug/l
 RT: 5.952 min Scan# 798
 Delta R.T. -0.006 min
 Lab File: VX037108.D
 Acq: 19 Aug 2023 04:49



Tgt Ion: 65 Resp: 120052
 Ion Ratio Lower Upper
 65 100
 67 50.7 0.0 100.2



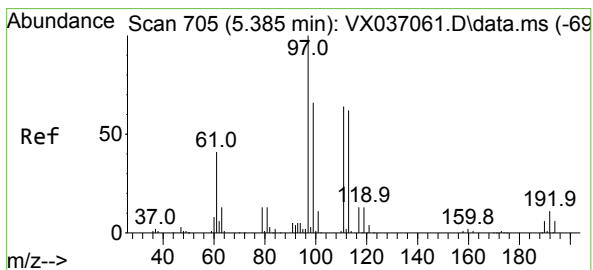
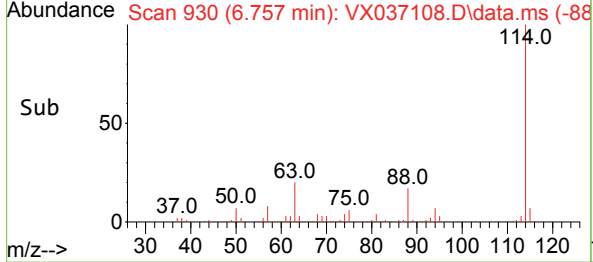
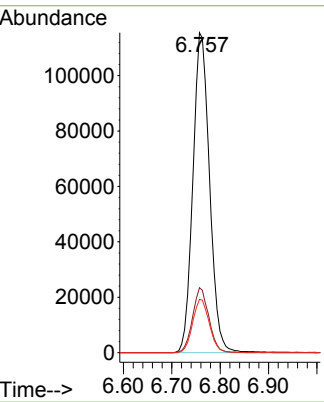
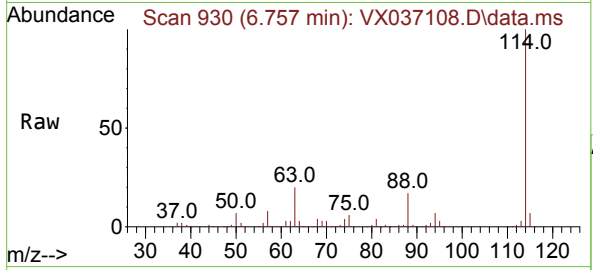


#34
 1,4-Difluorobenzene
 Concen: 50.000 ug/l
 RT: 6.757 min Scan# 911
 Delta R.T. -0.006 min
 Lab File: VX037108.D
 Acq: 19 Aug 2023 04:49

Instrument : MSVOA_X
 ClientSampleId : RE108D1-20230815

Tgt Ion:114 Resp: 276854

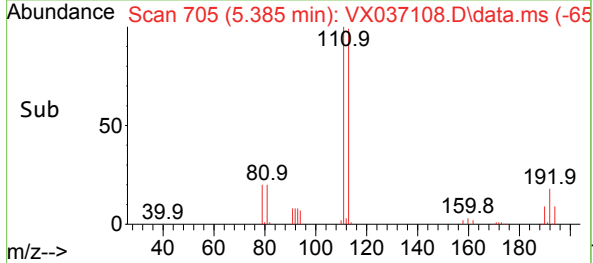
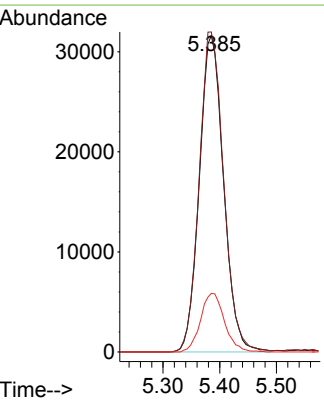
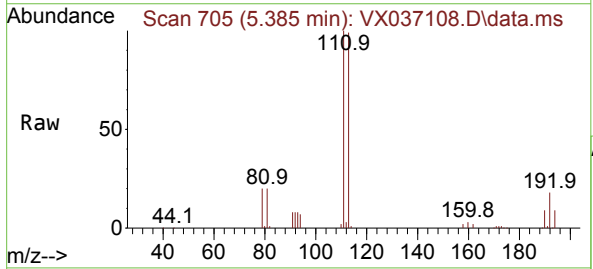
Ion	Ratio	Lower	Upper
114	100		
63	20.3	0.0	45.0
88	16.6	0.0	36.6

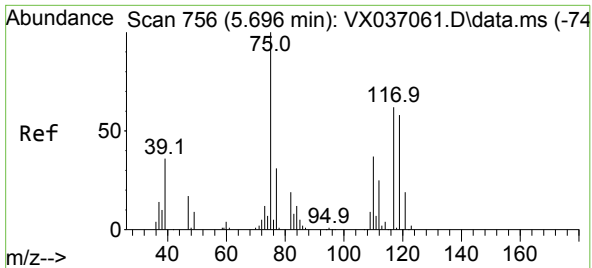


#35
 Dibromofluoromethane
 Concen: 51.070 ug/l
 RT: 5.385 min Scan# 705
 Delta R.T. 0.000 min
 Lab File: VX037108.D
 Acq: 19 Aug 2023 04:49

Tgt Ion:113 Resp: 93638

Ion	Ratio	Lower	Upper
113	100		
111	102.3	82.9	124.3
192	18.4	13.3	19.9

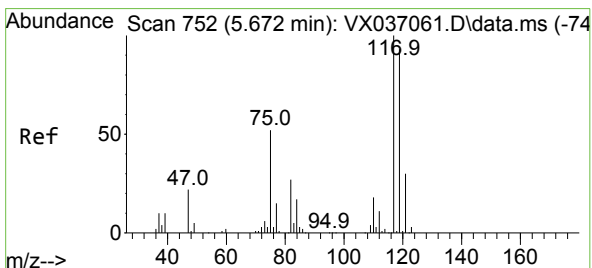
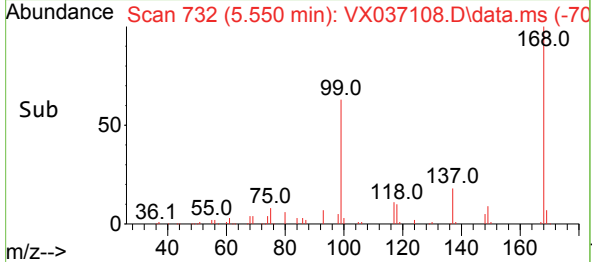
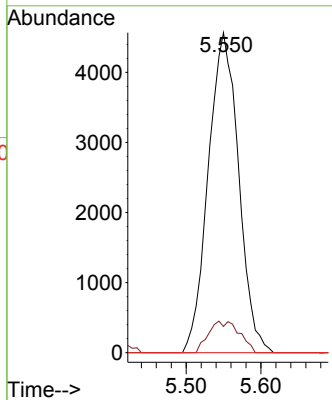
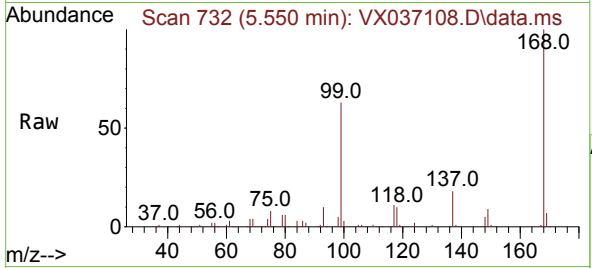




#36
 1,1-Dichloropropene
 Concen: 4.955 ug/l
 RT: 5.550 min Scan# 711
 Delta R.T. -0.146 min
 Lab File: VX037108.D
 Acq: 19 Aug 2023 04:49

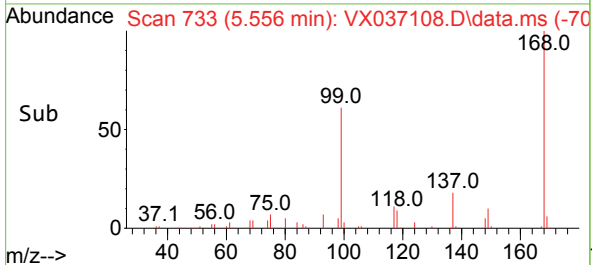
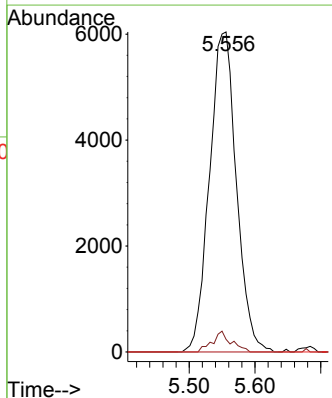
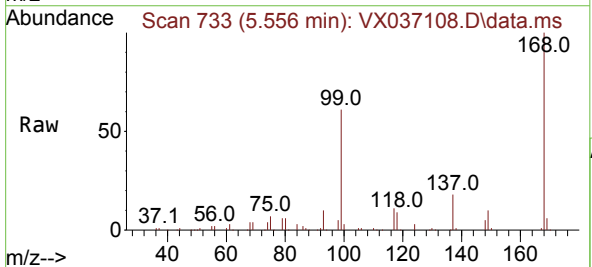
Instrument : MSVOA_X
 ClientSampleId : RE108D1-20230815

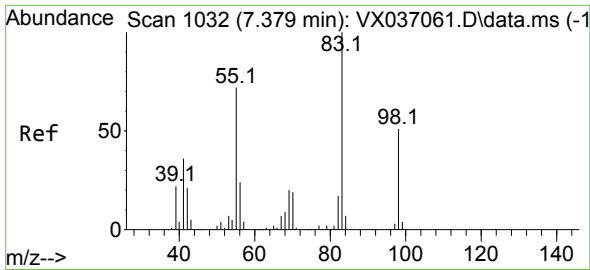
Tgt Ion	Resp	Lower	Upper
75	12908		
75	100		
110	10.0	17.0	50.9#
77	0.0	24.7	37.1#



#38
 Carbon Tetrachloride
 Concen: 6.084 ug/l
 RT: 5.556 min Scan# 733
 Delta R.T. -0.116 min
 Lab File: VX037108.D
 Acq: 19 Aug 2023 04:49

Tgt Ion	Resp	Lower	Upper
117	17216		
117	100		
119	4.0	78.2	117.2#
121	0.0	24.4	36.6#

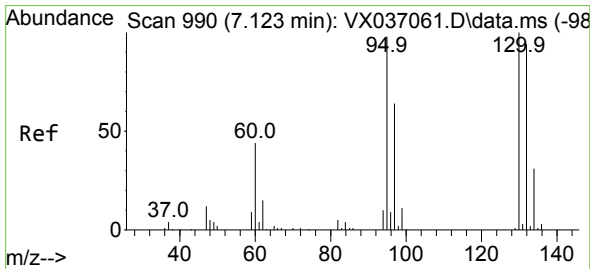
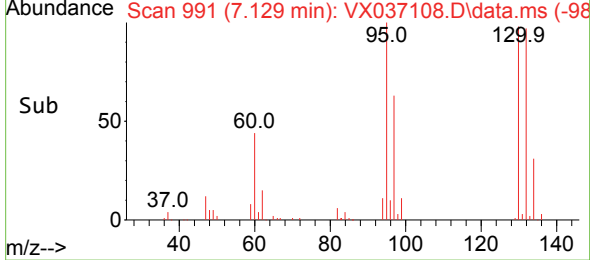
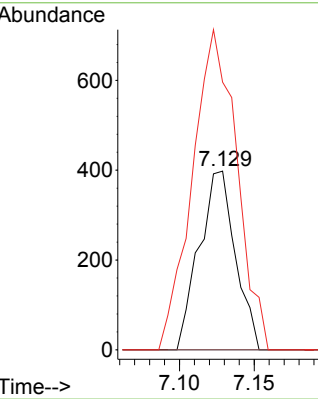
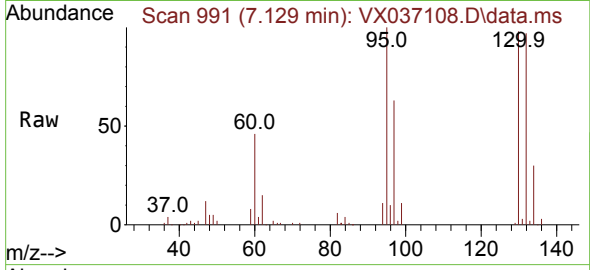




#39
 Methylcyclohexane
 Concen: 0.245 ug/l
 RT: 7.129 min Scan# 991
 Delta R.T. -0.250 min
 Lab File: VX037108.D
 Acq: 19 Aug 2023 04:49

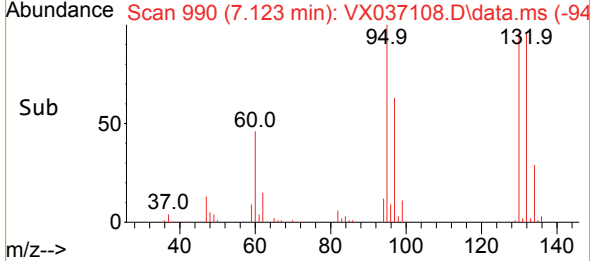
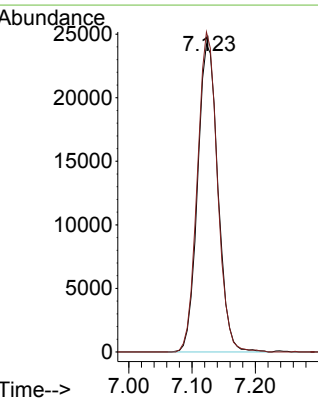
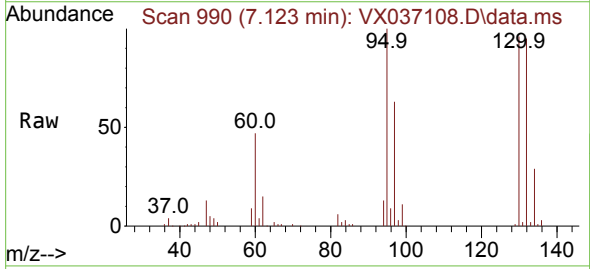
Instrument :
 MSVOA_X
 ClientSampleId :
 RE108D1-20230815

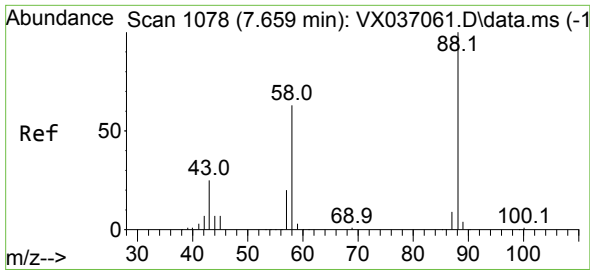
Tgt Ion	Resp	Lower	Upper
83	100		
55	0.0	64.6	97.0#
98	149.7	36.7	55.1#



#44
 Trichloroethene
 Concen: 25.601 ug/l
 RT: 7.123 min Scan# 990
 Delta R.T. 0.000 min
 Lab File: VX037108.D
 Acq: 19 Aug 2023 04:49

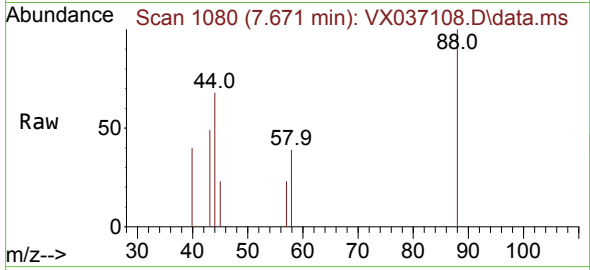
Tgt Ion	Resp	Lower	Upper
130	100		
95	104.0	0.0	204.4



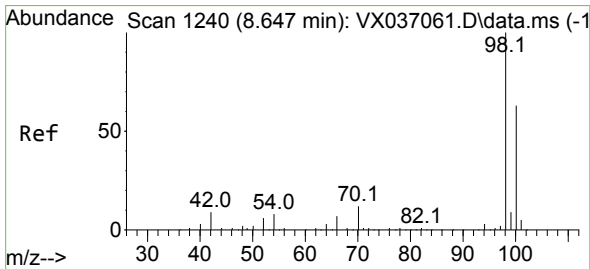
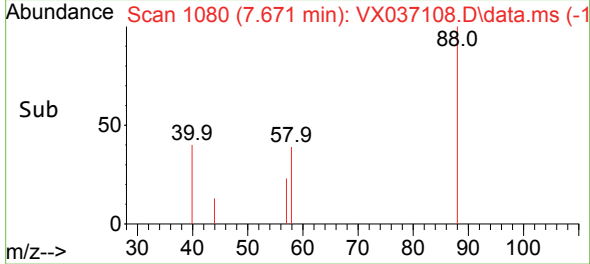
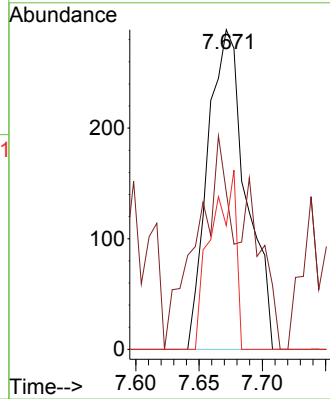


#49
 1,4-Dioxane
 Concen: 10.976 ug/l
 RT: 7.671 min Scan# 1078
 Delta R.T. 0.012 min
 Lab File: VX037108.D
 Acq: 19 Aug 2023 04:49

Instrument : MSVOA_X
 ClientSampleId : RE108D1-20230815

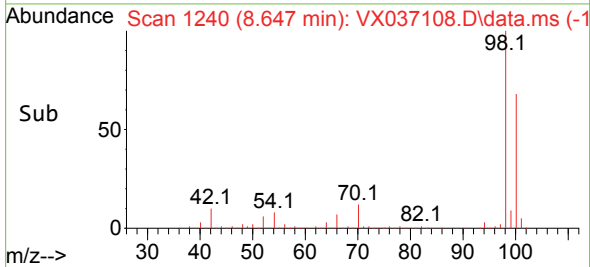
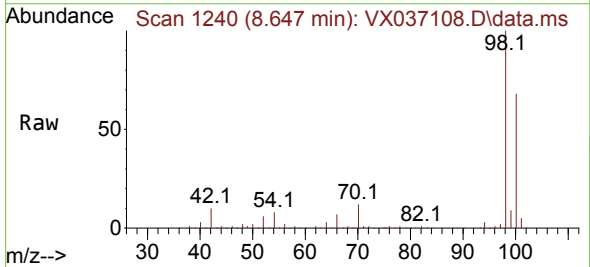
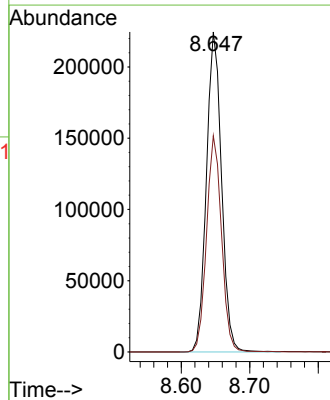


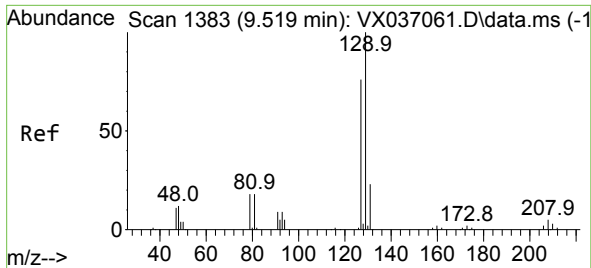
Tgt Ion: 88 Resp: 609
 Ion Ratio Lower Upper
 88 100
 43 57.3 0.0 0.0#
 58 36.1 60.1 90.1#



#50
 Toluene-d8
 Concen: 51.947 ug/l
 RT: 8.647 min Scan# 1240
 Delta R.T. 0.000 min
 Lab File: VX037108.D
 Acq: 19 Aug 2023 04:49

Tgt Ion: 98 Resp: 345495
 Ion Ratio Lower Upper
 98 100
 100 66.9 53.1 79.7

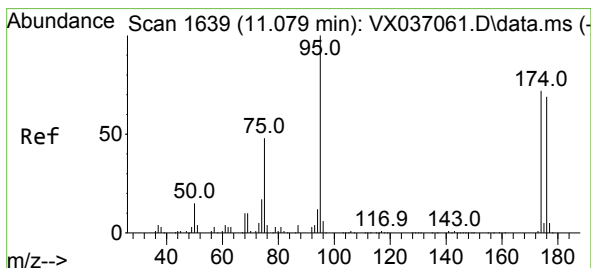
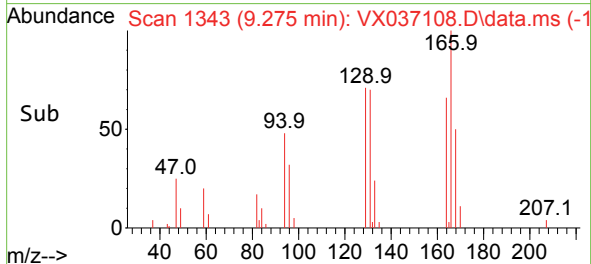
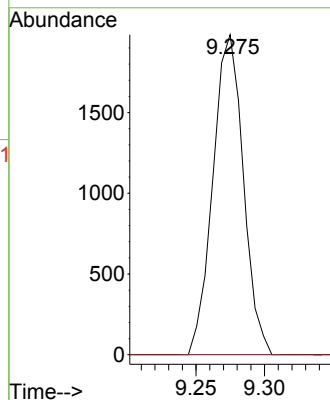
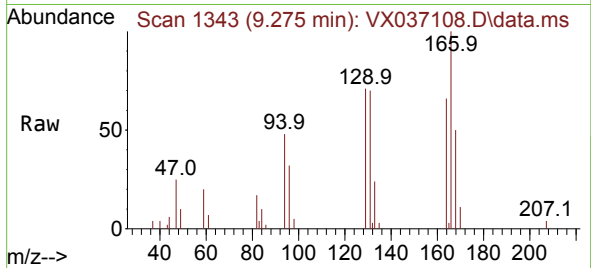




#60
 Dibromochloromethane
 Concen: 1.430 ug/l
 RT: 9.275 min Scan# 11
 Delta R.T. -0.244 min
 Lab File: VX037108.D
 Acq: 19 Aug 2023 04:49

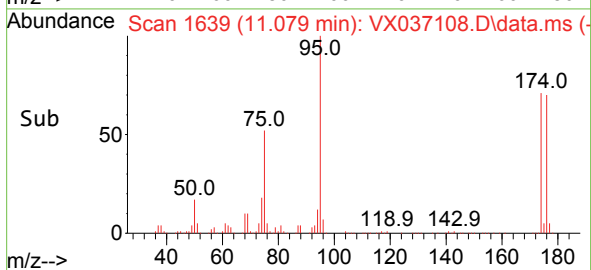
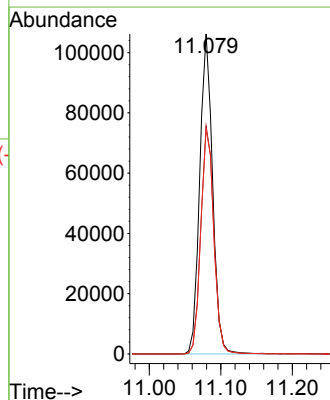
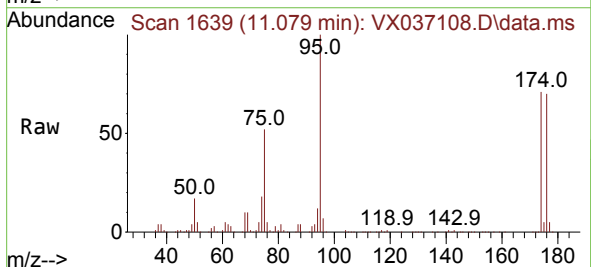
Instrument : MSVOA_X
 ClientSampleId : RE108D1-20230815

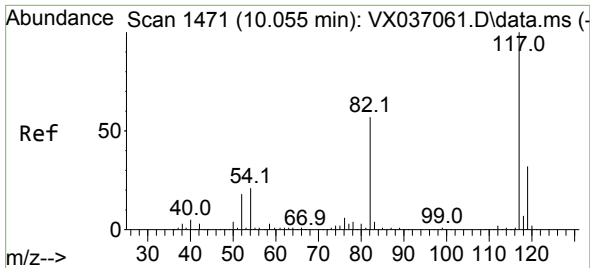
Tgt Ion:129 Resp: 3060
 Ion Ratio Lower Upper
 129 100
 127 0.0 38.8 116.4#



#62
 4-Bromofluorobenzene
 Concen: 50.658 ug/l
 RT: 11.079 min Scan# 1639
 Delta R.T. 0.000 min
 Lab File: VX037108.D
 Acq: 19 Aug 2023 04:49

Tgt Ion: 95 Resp: 132406
 Ion Ratio Lower Upper
 95 100
 174 72.2 0.0 135.6
 176 71.2 0.0 131.0



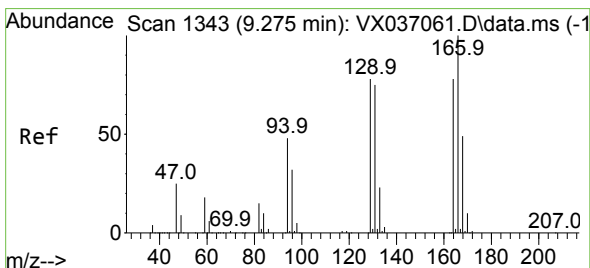
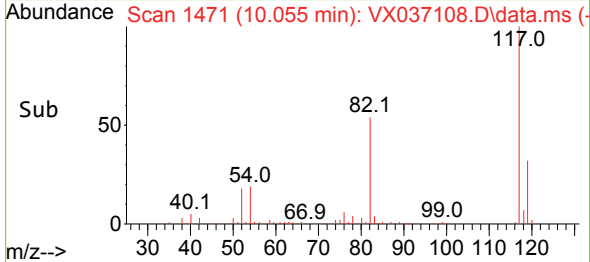
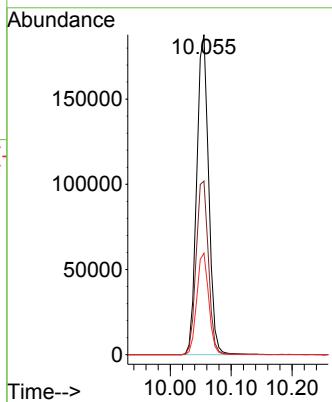
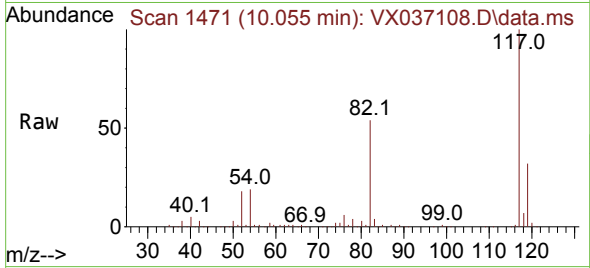


#63
 Chlorobenzene-d5
 Concen: 50.000 ug/l
 RT: 10.055 min Scan# 14
 Delta R.T. 0.000 min
 Lab File: VX037108.D
 Acq: 19 Aug 2023 04:49

Instrument :
 MSVOA_X
 ClientSampleId :
 RE108D1-20230815

Tgt Ion:117 Resp: 255972

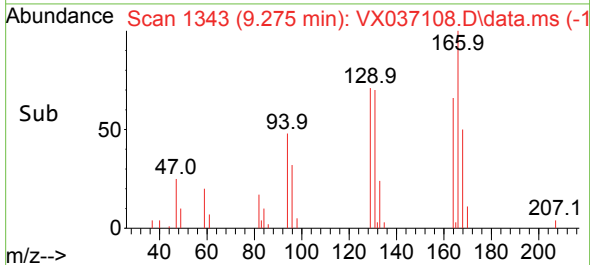
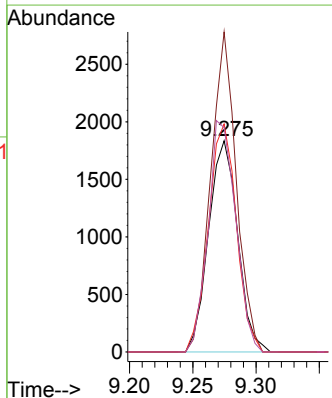
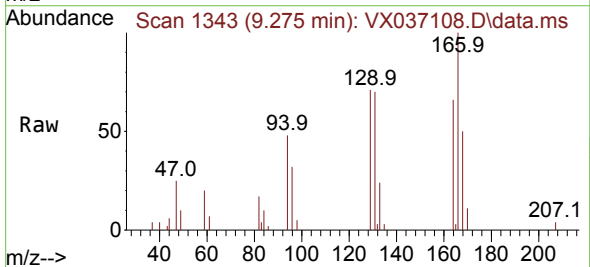
Ion	Ratio	Lower	Upper
117	100		
82	54.3	46.2	69.4
119	31.7	25.5	38.3

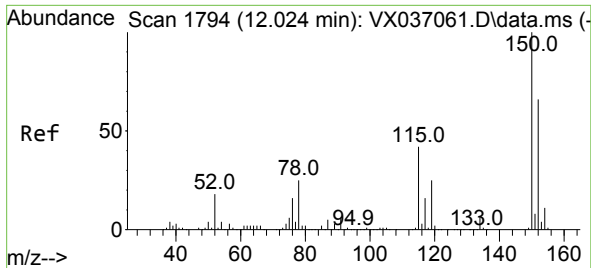


#64
 Tetrachloroethene
 Concen: 1.568 ug/l
 RT: 9.275 min Scan# 1343
 Delta R.T. 0.000 min
 Lab File: VX037108.D
 Acq: 19 Aug 2023 04:49

Tgt Ion:164 Resp: 2928

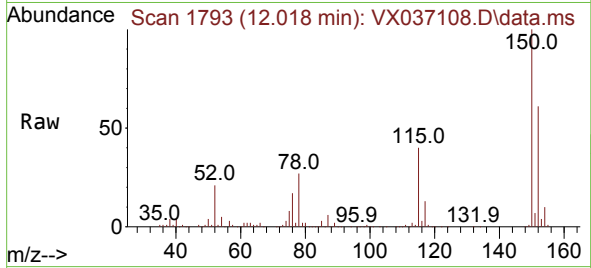
Ion	Ratio	Lower	Upper
164	100		
166	151.5	102.7	154.1
129	108.0	80.4	120.6
131	106.2	76.5	114.7



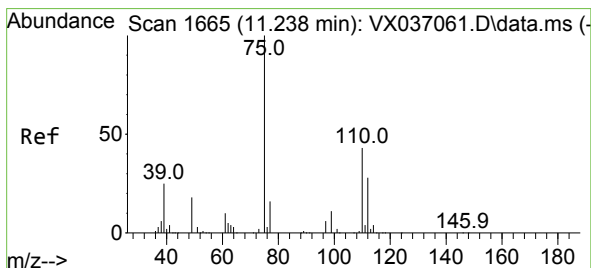
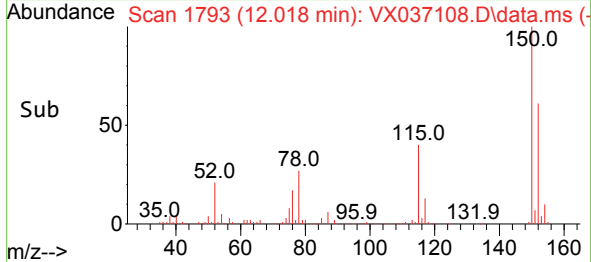
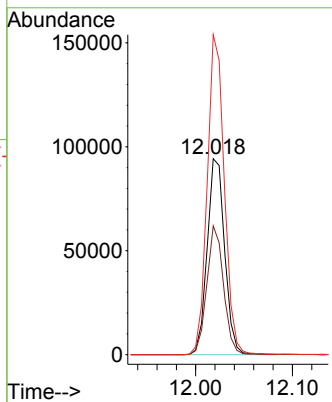


#72
 1,4-Dichlorobenzene-d4
 Concen: 50.000 ug/l
 RT: 12.018 min Scan# 11
 Delta R.T. -0.006 min
 Lab File: VX037108.D
 Acq: 19 Aug 2023 04:49

Instrument :
 MSVOA_X
 ClientSampleId :
 RE108D1-20230815

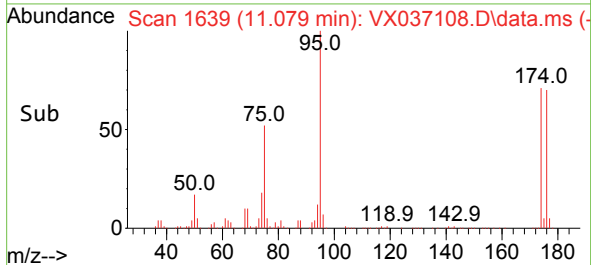
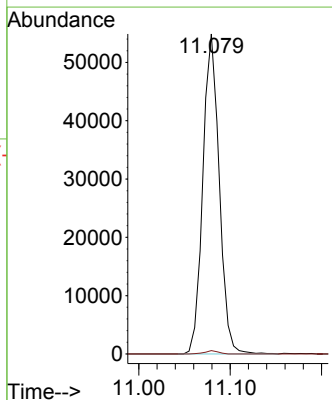
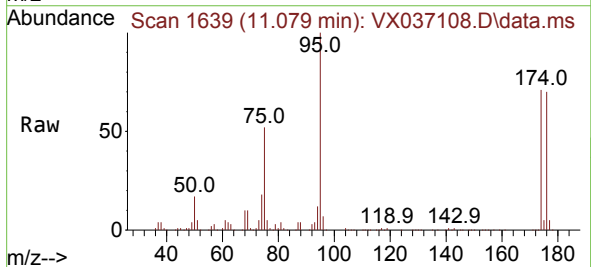


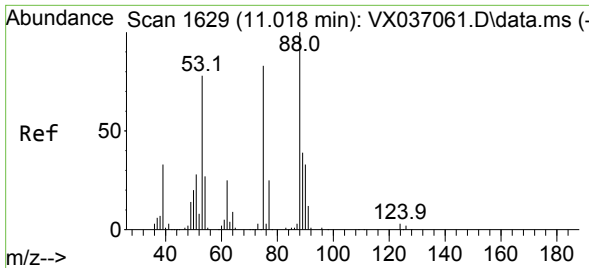
Tgt Ion:152 Resp: 118915
 Ion Ratio Lower Upper
 152 100
 115 62.9 43.3 129.9
 150 159.3 0.0 345.0



#76
 1,2,3-Trichloropropane
 Concen: 26.912 ug/l
 RT: 11.079 min Scan# 1639
 Delta R.T. -0.158 min
 Lab File: VX037108.D
 Acq: 19 Aug 2023 04:49

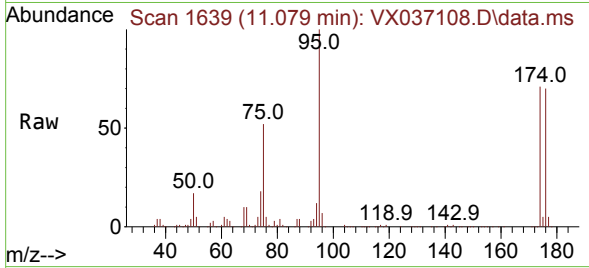
Tgt Ion: 75 Resp: 68155
 Ion Ratio Lower Upper
 75 100
 77 0.9 19.1 57.5#



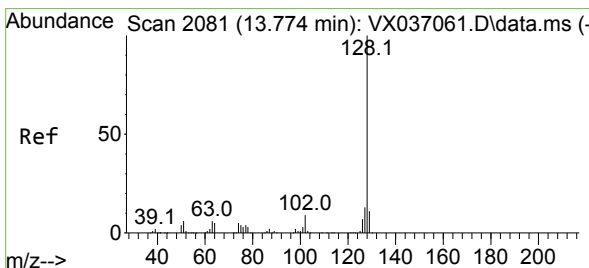
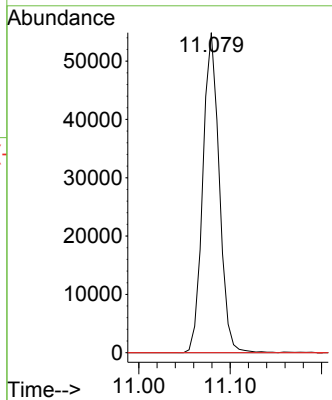
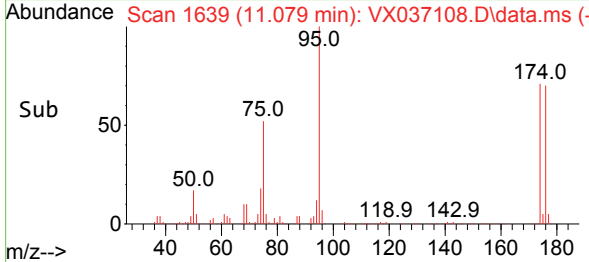


#81
 trans-1,4-Dichloro-2-butene
 Concen: 75.167 ug/l
 RT: 11.079 min Scan# 1639
 Delta R.T. 0.061 min
 Lab File: VX037108.D
 Acq: 19 Aug 2023 04:49

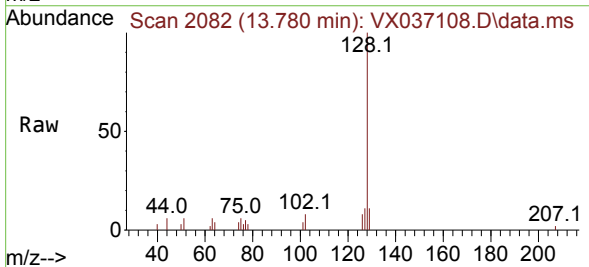
Instrument : MSVOA_X
 ClientSampleId : RE108D1-20230815



Tgt Ion: 75 Resp: 68155
 Ion Ratio Lower Upper
 75 100
 53 0.0 90.5 135.7#
 89 0.0 36.9 55.3#



#95
 Naphthalene
 Concen: 0.492 ug/l
 RT: 13.780 min Scan# 2082
 Delta R.T. 0.006 min
 Lab File: VX037108.D
 Acq: 19 Aug 2023 04:49



Tgt Ion: 128 Resp: 4879
 Ion Ratio Lower Upper
 128 100
 127 12.5 10.3 15.5
 129 9.8 8.8 13.2

