

Data Path : Z:\voasrv\HPCHEM1\MSVOA_X\Data\VX081825\
 Data File : VX047372.D
 Acq On : 18 Aug 2025 10:28
 Operator : JC/MD
 Sample : VX0818MBL01
 Misc : 5.00g/10mL/100uL/5.00mL/MSVOA_X/MEOH
 ALS Vial : 3 Sample Multiplier: 1

Instrument :
 MSVOA_X
 ClientSampleId :
 VX0818MBL01

Quant Time: Aug 19 01:37:58 2025
 Quant Method : Z:\voasrv\HPCHEM1\MSVOA_X\Method\82X081525W.M
 Quant Title : SW846 8260
 QLast Update : Mon Aug 18 04:18:28 2025
 Response via : Initial Calibration

Compound	R.T.	QIon	Response	Conc	Units	Dev(Min)

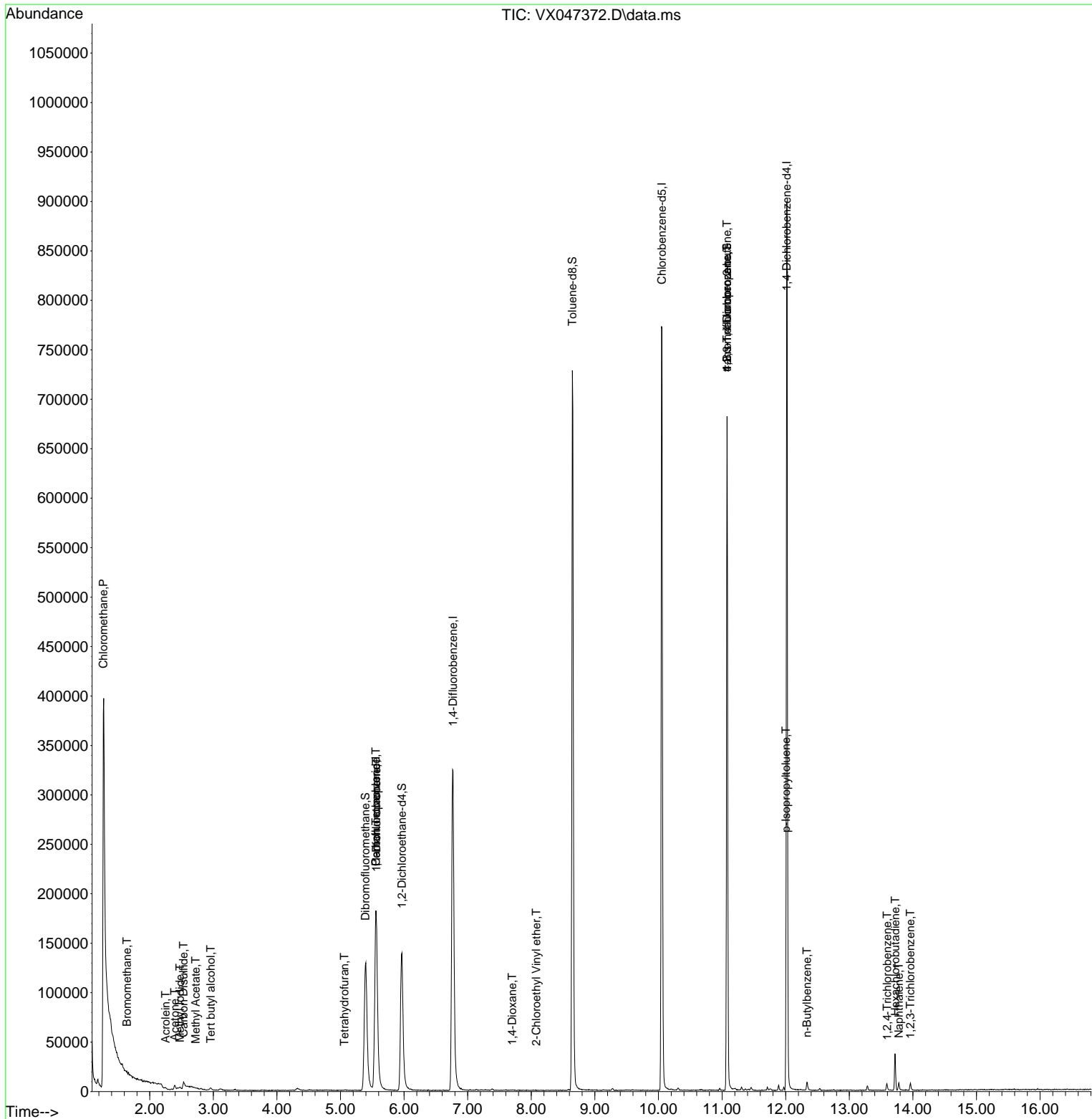
Internal Standards						
1) Pentafluorobenzene	5.556	168	181435	50.000	ug/l	-0.01
34) 1,4-Difluorobenzene	6.769	114	358582	50.000	ug/l	0.00
63) Chlorobenzene-d5	10.055	117	359943	50.000	ug/l	0.00
72) 1,4-Dichlorobenzene-d4	12.018	152	177351	50.000	ug/l	0.00
System Monitoring Compounds						
33) 1,2-Dichloroethane-d4	5.964	65	147863	58.231	ug/l	0.00
Spiked Amount	50.000	Range	78 - 117	Recovery	=	116.460%
35) Dibromofluoromethane	5.391	113	125895	54.096	ug/l	0.00
Spiked Amount	50.000	Range	75 - 124	Recovery	=	108.200%
50) Toluene-d8	8.647	98	442801	53.233	ug/l	0.00
Spiked Amount	50.000	Range	92 - 112	Recovery	=	106.460%
62) 4-Bromofluorobenzene	11.079	95	182292	59.387	ug/l	0.00
Spiked Amount	50.000	Range	83 - 123	Recovery	=	118.780%
Target Compounds						
						Qvalue
3) Chloromethane	1.270	50	19273	9.263	ug/l #	41
5) Bromomethane	1.642	94	295	0.280	ug/l	94
10) Methyl Iodide	2.477	142	3954	1.030	ug/l #	93
11) Tert butyl alcohol	2.959	59	1360	6.157	ug/l #	85
13) Acrolein	2.252	56	394	0.845	ug/l #	48
16) Acetone	2.392	43	6613	6.929	ug/l	95
17) Carbon Disulfide	2.532	76	14724	2.136	ug/l #	94
18) Methyl Acetate	2.721	43	541	0.219	ug/l #	53
29) Tetrahydrofuran	5.062	42	178	0.220	ug/l #	34
36) 1,1-Dichloropropene	5.562	75	14988	4.080	ug/l #	52
38) Carbon Tetrachloride	5.556	117	19953	4.970	ug/l #	17
49) 1,4-Dioxane	7.702	88	146	5.281	ug/l #	45
58) 2-Chloroethyl Vinyl ether	8.080	63	46	8.380	ug/l #	46
76) 1,2,3-Trichloropropane	11.079	75	92774	28.521	ug/l #	38
81) trans-1,4-Dichloro-2-b...	11.079	75	92774	112.340	ug/l #	7
86) p-Isopropyltoluene	12.006	119	2470	0.207	ug/l	93
89) n-Butylbenzene	12.335	91	3637	0.327	ug/l	97
93) 1,2,4-Trichlorobenzene	13.597	180	2213	0.537	ug/l	90
94) Hexachlorobutadiene	13.725	225	5164	3.522	ug/l	95
95) Naphthalene	13.780	128	5858	0.498	ug/l #	92
96) 1,2,3-Trichlorobenzene	13.963	180	2309	0.595	ug/l	96

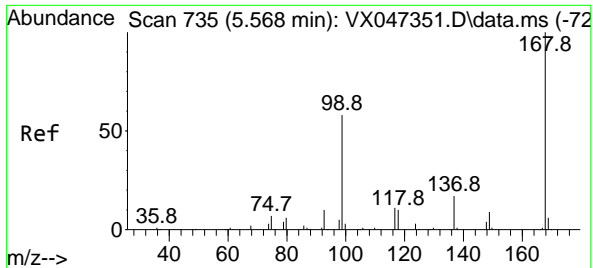
(#) = qualifier out of range (m) = manual integration (+) = signals summed

Data Path : Z:\voasrv\HPCHEM1\MSVOA_X\Data\VX081825\
 Data File : VX047372.D
 Acq On : 18 Aug 2025 10:28
 Operator : JC/MD
 Sample : VX0818MBL01
 Misc : 5.00g/10mL/100uL/5.00mL/MSVOA_X/MEOH
 ALS Vial : 3 Sample Multiplier: 1

Instrument :
 MSVOA_X
 ClientSampleId :
 VX0818MBL01

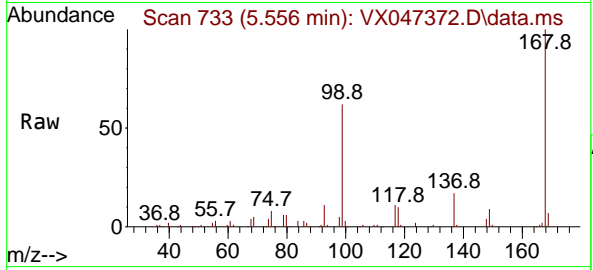
Quant Time: Aug 19 01:37:58 2025
 Quant Method : Z:\voasrv\HPCHEM1\MSVOA_X\Method\82X081525W.M
 Quant Title : SW846 8260
 QLast Update : Mon Aug 18 04:18:28 2025
 Response via : Initial Calibration



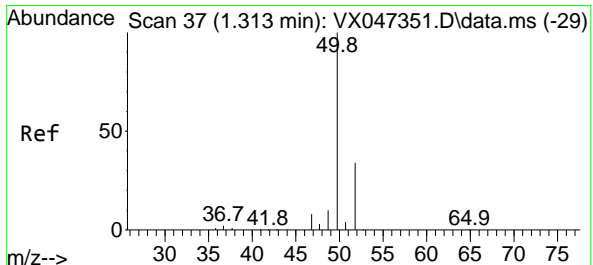
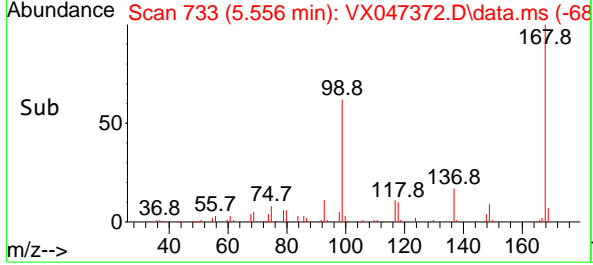
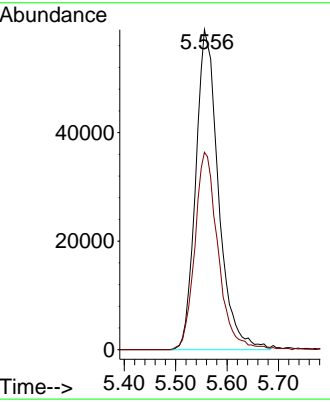


#1
 Pentafluorobenzene
 Concen: 50.000 ug/l
 RT: 5.556 min Scan# 71
 Delta R.T. -0.012 min
 Lab File: VX047372.D
 Acq: 18 Aug 2025 10:28

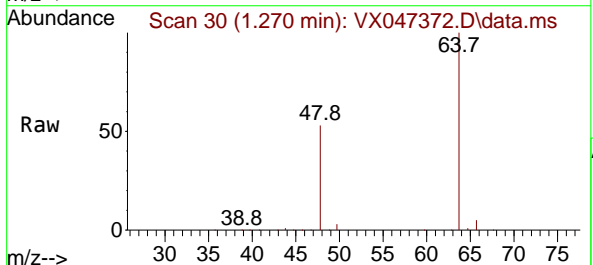
Instrument : MSVOA_X
 ClientSampleId : VX0818MBL01



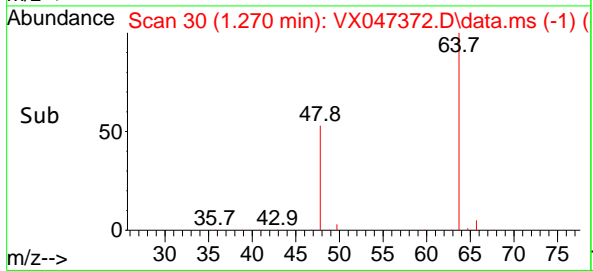
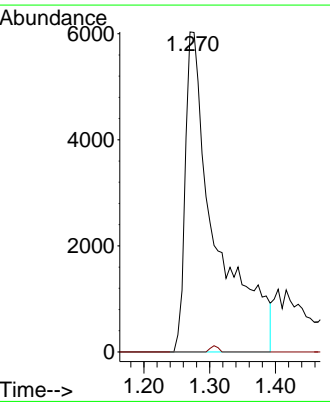
Tgt Ion:168 Resp: 181435
 Ion Ratio Lower Upper
 168 100
 99 61.7 47.9 71.9

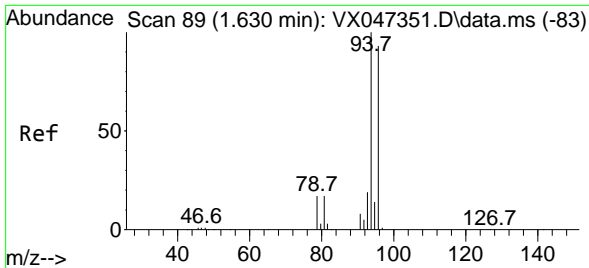


#3
 Chloromethane
 Concen: 9.263 ug/l
 RT: 1.270 min Scan# 30
 Delta R.T. -0.043 min
 Lab File: VX047372.D
 Acq: 18 Aug 2025 10:28



Tgt Ion: 50 Resp: 19273
 Ion Ratio Lower Upper
 50 100
 52 0.0 27.0 40.4





#5
 Bromomethane
 Concen: 0.280 ug/l
 RT: 1.642 min Scan# 91
 Delta R.T. 0.012 min
 Lab File: VX047372.D
 Acq: 18 Aug 2025 10:28

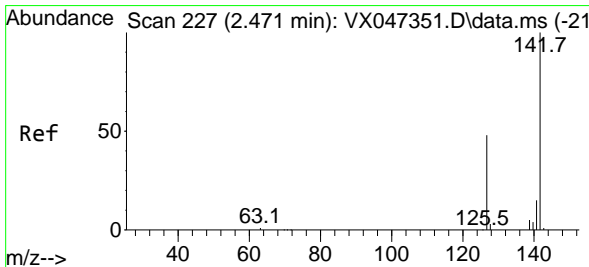
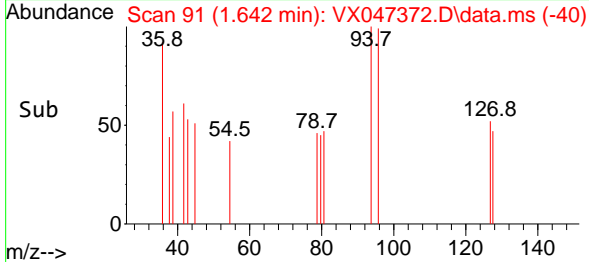
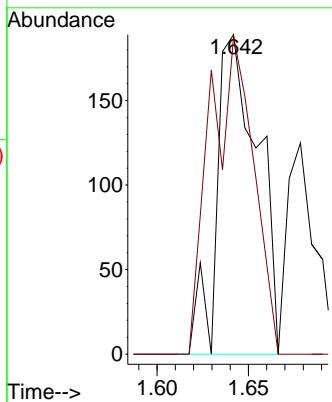
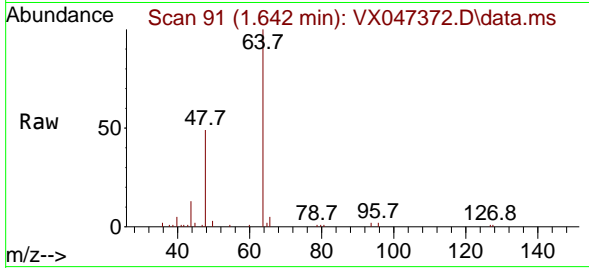
Instrument :

MSVOA_X

ClientSampleId :

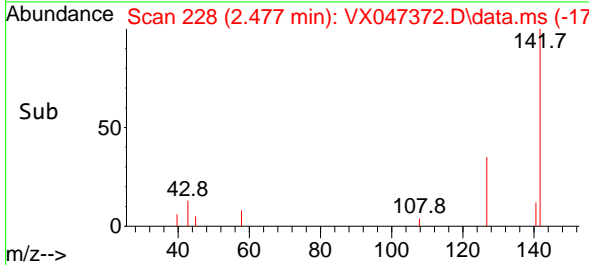
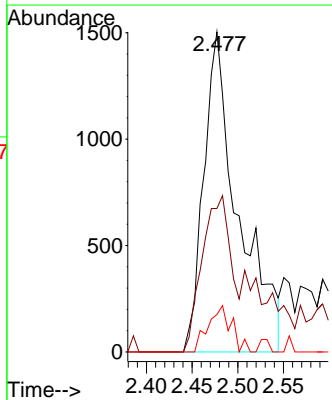
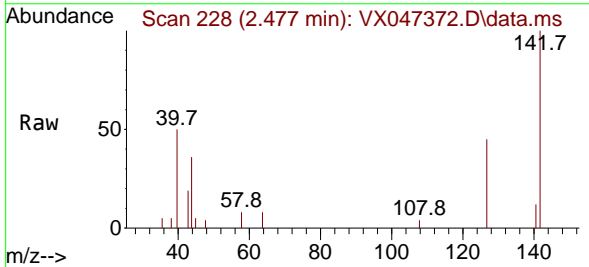
VX0818MBL01

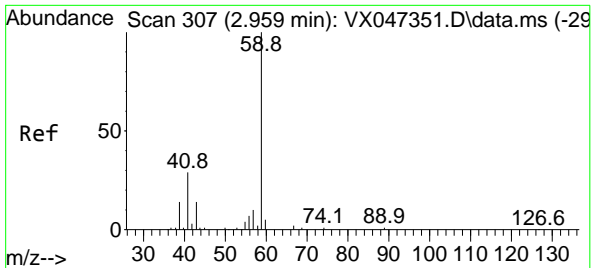
Tgt Ion: 94 Resp: 295
 Ion Ratio Lower Upper
 94 100
 96 99.5 74.7 112.1



#10
 Methyl Iodide
 Concen: 1.030 ug/l
 RT: 2.477 min Scan# 228
 Delta R.T. 0.006 min
 Lab File: VX047372.D
 Acq: 18 Aug 2025 10:28

Tgt Ion:142 Resp: 3954
 Ion Ratio Lower Upper
 142 100
 127 41.4 36.1 54.1
 141 9.7 11.1 16.7#

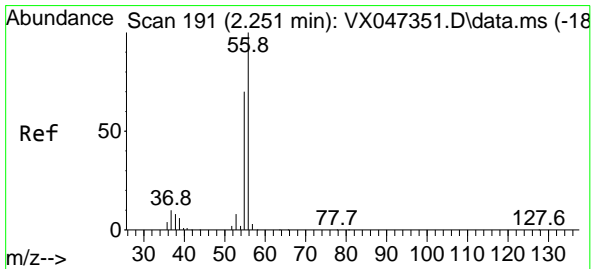
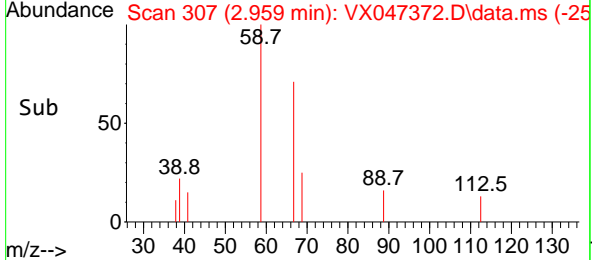
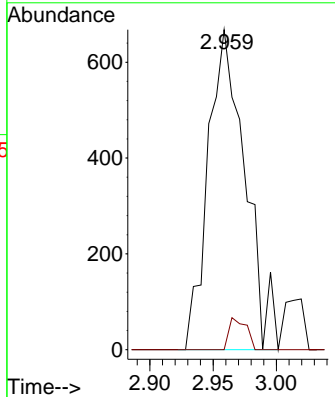
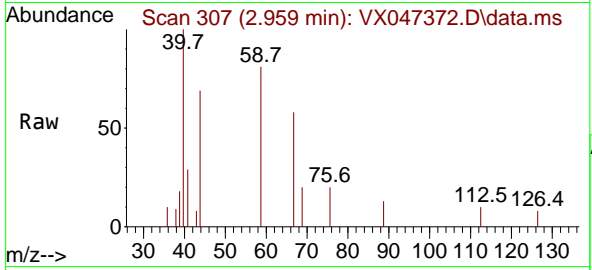




#11
 Tert butyl alcohol
 Concen: 6.157 ug/l
 RT: 2.959 min Scan# 307
 Delta R.T. 0.000 min
 Lab File: VX047372.D
 Acq: 18 Aug 2025 10:28

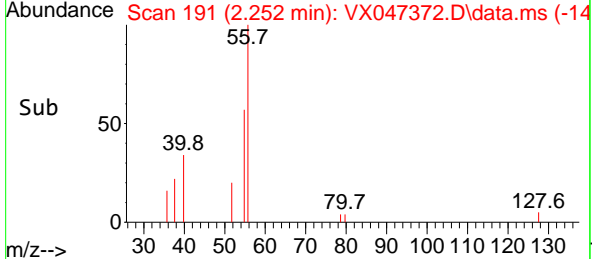
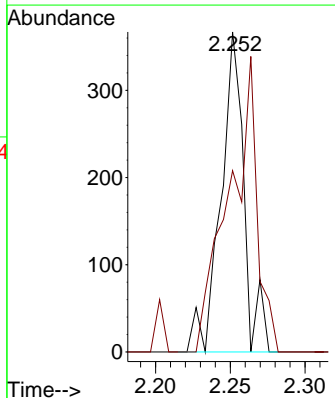
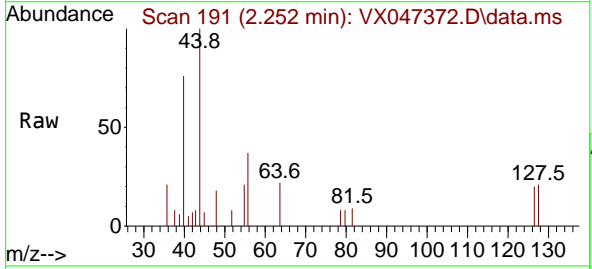
Instrument : MSVOA_X
 ClientSampleId : VX0818MBL01

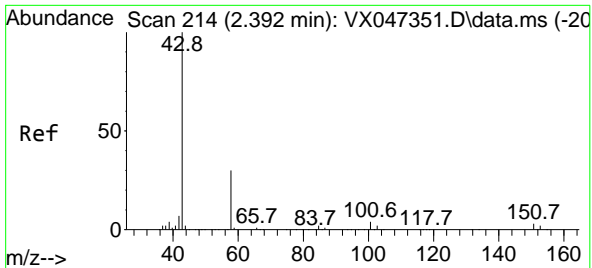
Tgt Ion: 59 Resp: 1360
 Ion Ratio Lower Upper
 59 100
 57 4.6 8.3 12.5#



#13
 Acrolein
 Concen: 0.845 ug/l
 RT: 2.252 min Scan# 191
 Delta R.T. 0.000 min
 Lab File: VX047372.D
 Acq: 18 Aug 2025 10:28

Tgt Ion: 56 Resp: 394
 Ion Ratio Lower Upper
 56 100
 55 112.2 55.5 83.3#

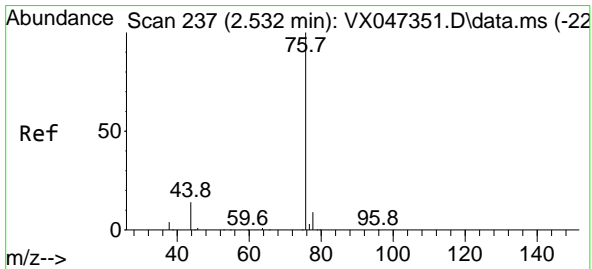
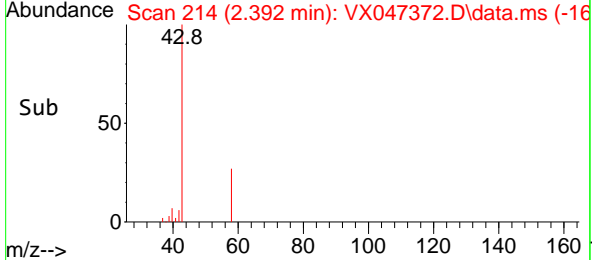
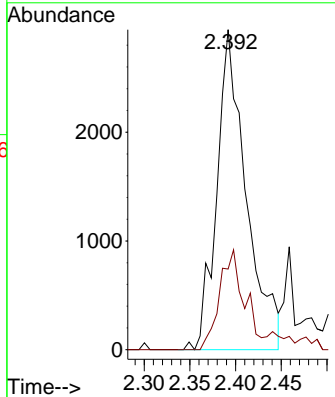
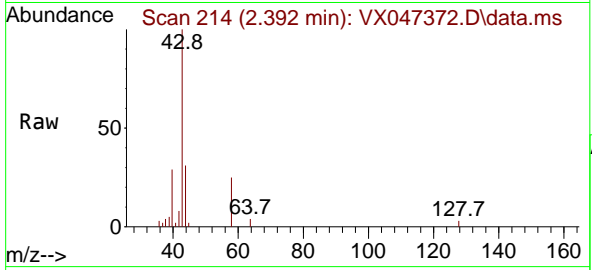




#16
 Acetone
 Concen: 6.929 ug/l
 RT: 2.392 min Scan# 216
 Delta R.T. 0.000 min
 Lab File: VX047372.D
 Acq: 18 Aug 2025 10:28

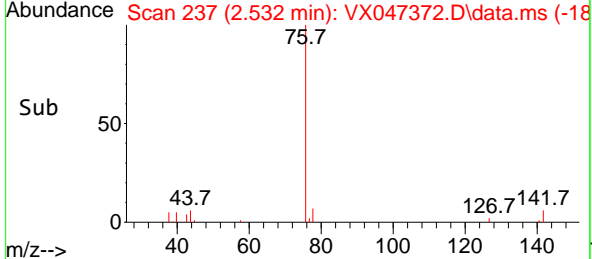
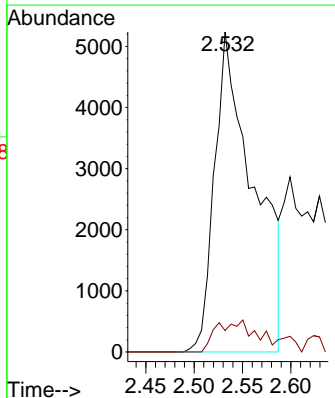
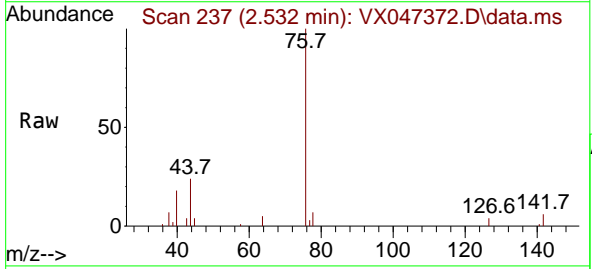
Instrument : MSVOA_X
 ClientSampleId : VX0818MBL01

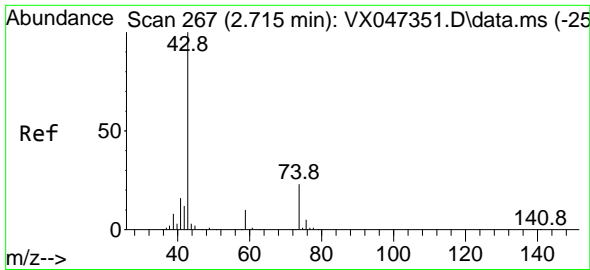
Tgt Ion: 43 Resp: 6613
 Ion Ratio Lower Upper
 43 100
 58 28.4 24.8 37.2



#17
 Carbon Disulfide
 Concen: 2.136 ug/l
 RT: 2.532 min Scan# 237
 Delta R.T. 0.000 min
 Lab File: VX047372.D
 Acq: 18 Aug 2025 10:28

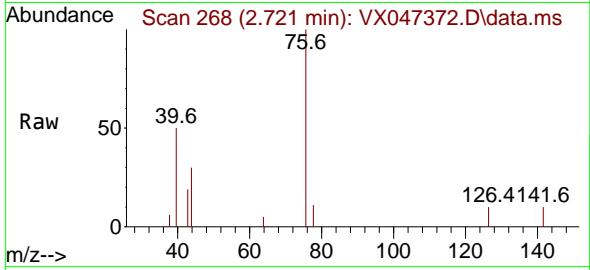
Tgt Ion: 76 Resp: 14724
 Ion Ratio Lower Upper
 76 100
 78 6.7 7.2 10.8#



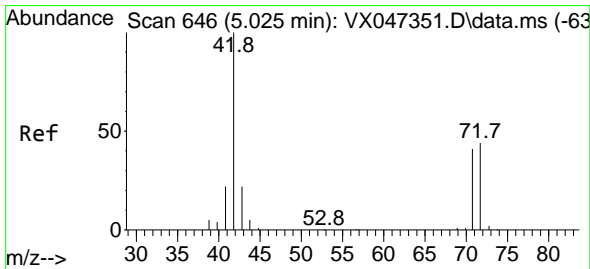
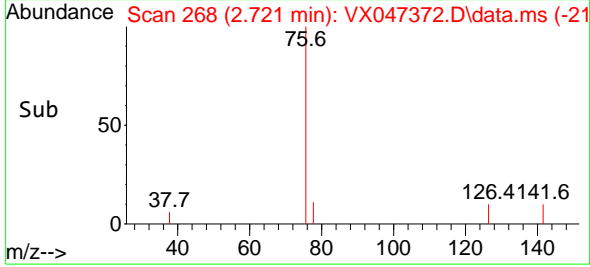
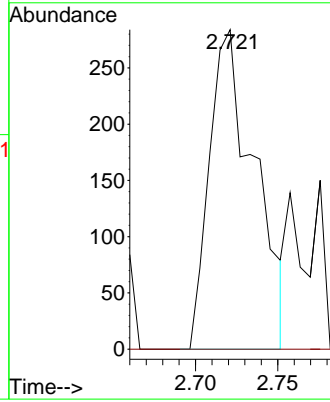


#18
 Methyl Acetate
 Concen: 0.219 ug/l
 RT: 2.721 min Scan# 20
 Delta R.T. 0.006 min
 Lab File: VX047372.D
 Acq: 18 Aug 2025 10:28

Instrument :
 MSVOA_X
 ClientSampleId :
 VX0818MBL01

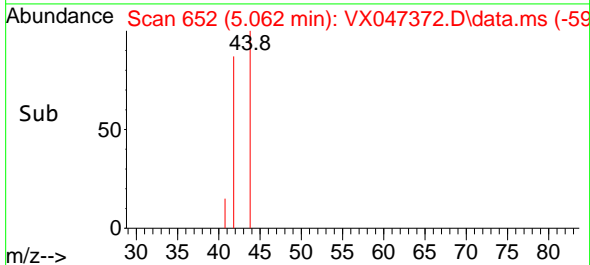
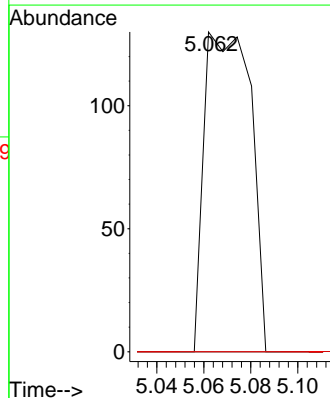
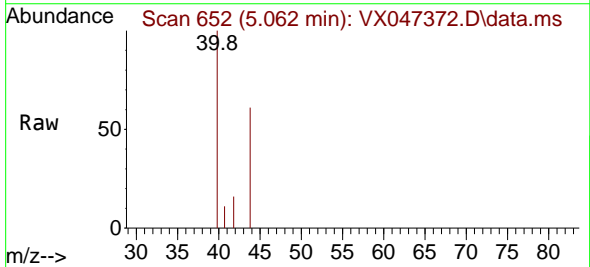


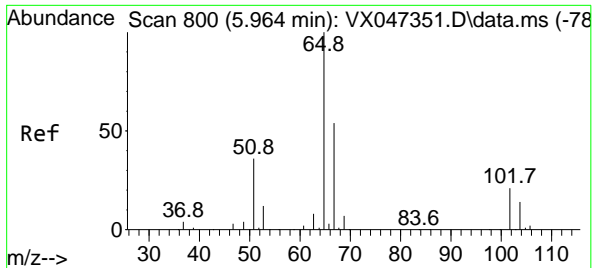
Tgt Ion: 43 Resp: 541
 Ion Ratio Lower Upper
 43 100
 74 0.0 18.4 27.6#



#29
 Tetrahydrofuran
 Concen: 0.220 ug/l
 RT: 5.062 min Scan# 652
 Delta R.T. 0.037 min
 Lab File: VX047372.D
 Acq: 18 Aug 2025 10:28

Tgt Ion: 42 Resp: 178
 Ion Ratio Lower Upper
 42 100
 72 0.0 34.6 51.8#
 71 0.0 32.6 49.0#

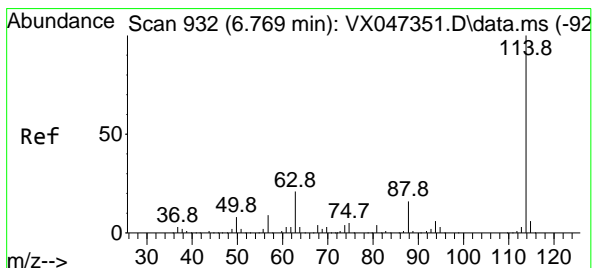
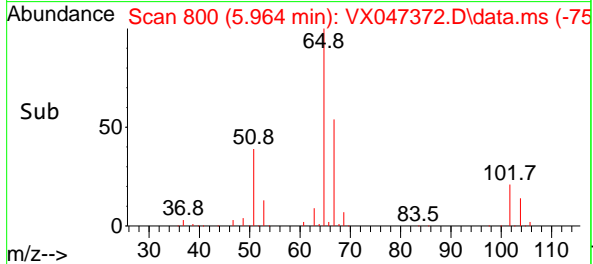
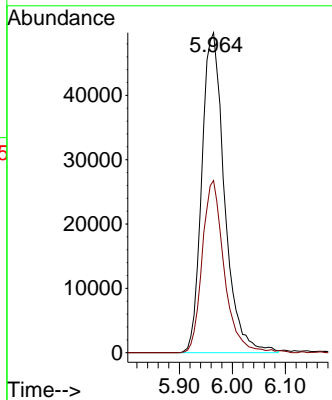
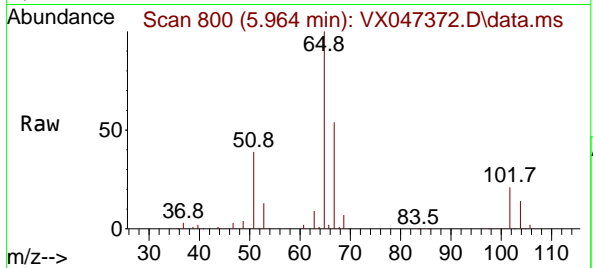




#33
 1,2-Dichloroethane-d4
 Concen: 58.231 ug/l
 RT: 5.964 min Scan# 800
 Delta R.T. 0.000 min
 Lab File: VX047372.D
 Acq: 18 Aug 2025 10:28

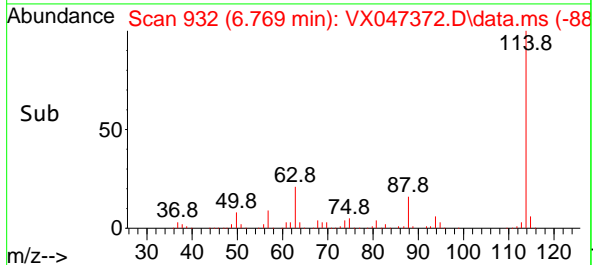
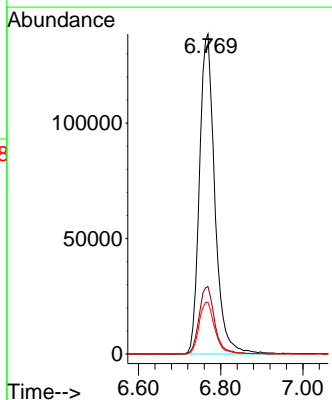
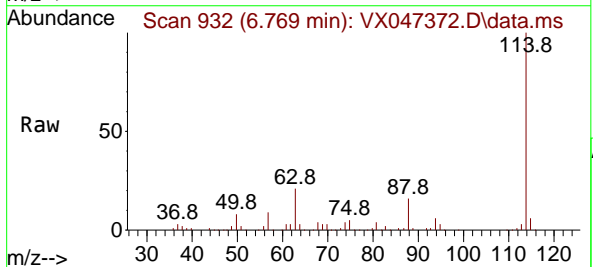
Instrument :
 MSVOA_X
 ClientSampleId :
 VX0818MBL01

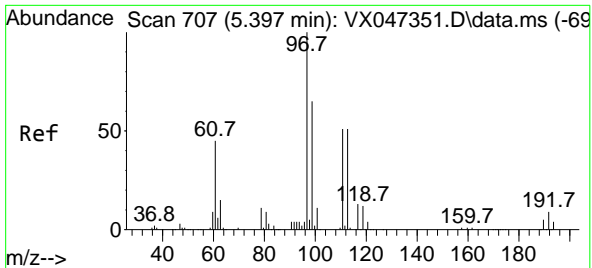
Tgt Ion: 65 Resp: 147863
 Ion Ratio Lower Upper
 65 100
 67 52.3 0.0 106.0



#34
 1,4-Difluorobenzene
 Concen: 50.000 ug/l
 RT: 6.769 min Scan# 932
 Delta R.T. 0.000 min
 Lab File: VX047372.D
 Acq: 18 Aug 2025 10:28

Tgt Ion: 114 Resp: 358582
 Ion Ratio Lower Upper
 114 100
 63 21.0 0.0 42.4
 88 16.1 0.0 33.0

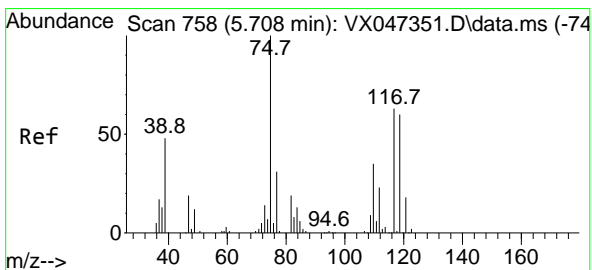
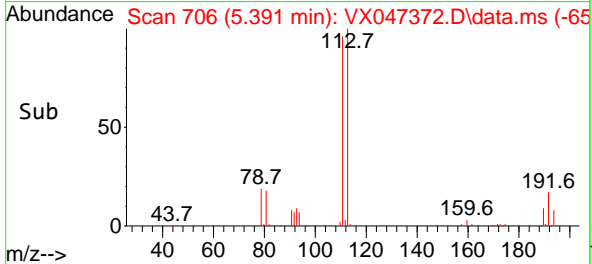
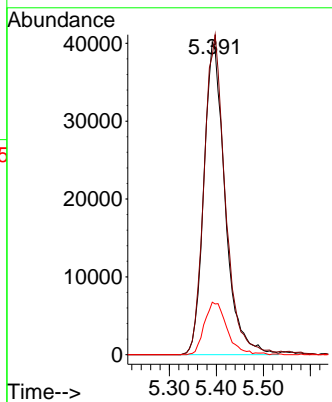
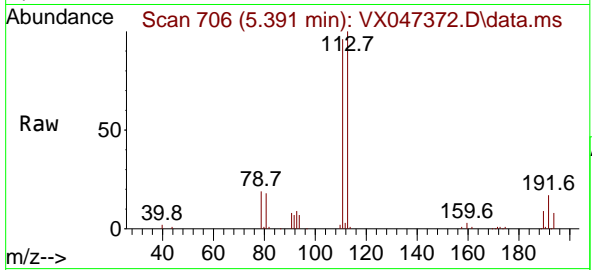




#35
 Dibromofluoromethane
 Concen: 54.096 ug/l
 RT: 5.391 min Scan# 706
 Delta R.T. -0.006 min
 Lab File: VX047372.D
 Acq: 18 Aug 2025 10:28

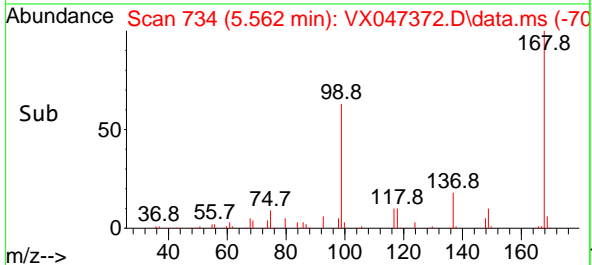
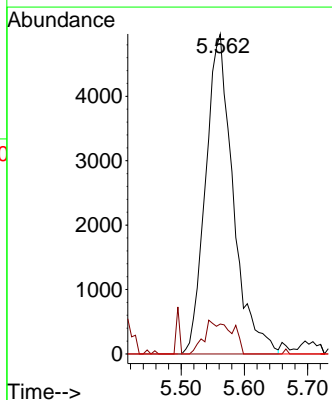
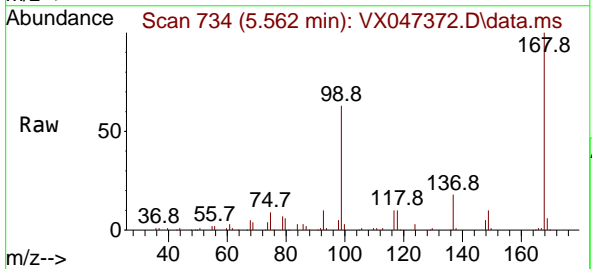
Instrument : MSVOA_X
 ClientSampleId : VX0818MBL01

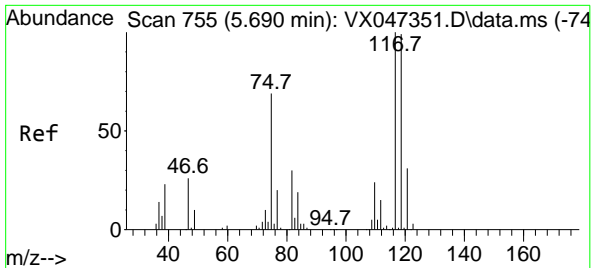
Tgt Ion	Resp	Lower	Upper
113	125895		
111	102.6	81.4	122.2
192	17.8	14.1	21.1



#36
 1,1-Dichloropropene
 Concen: 4.080 ug/l
 RT: 5.562 min Scan# 734
 Delta R.T. -0.146 min
 Lab File: VX047372.D
 Acq: 18 Aug 2025 10:28

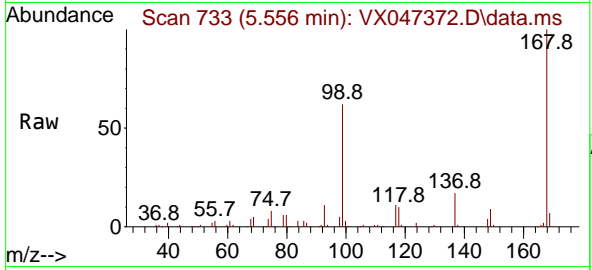
Tgt Ion	Resp	Lower	Upper
75	14988		
75	100		
110	10.6	17.4	52.2#
77	0.0	24.4	36.6#



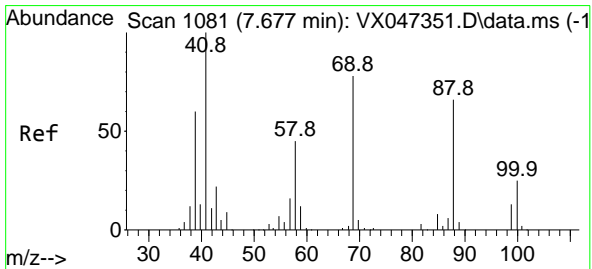
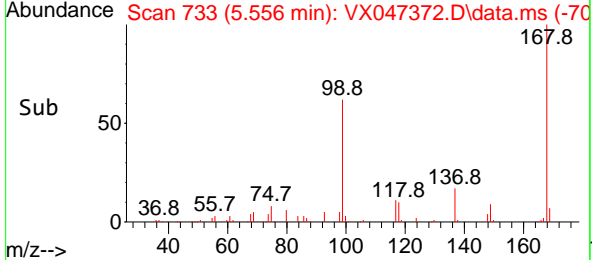
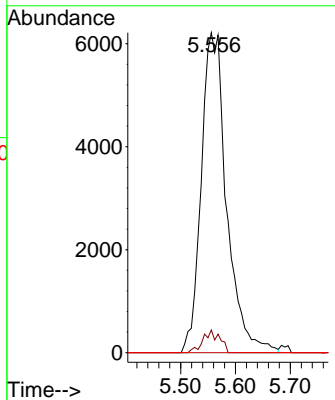


#38
 Carbon Tetrachloride
 Concen: 4.970 ug/l
 RT: 5.556 min Scan# 71
 Delta R.T. -0.134 min
 Lab File: VX047372.D
 Acq: 18 Aug 2025 10:28

Instrument :
 MSVOA_X
 ClientSampleId :
 VX0818MBL01

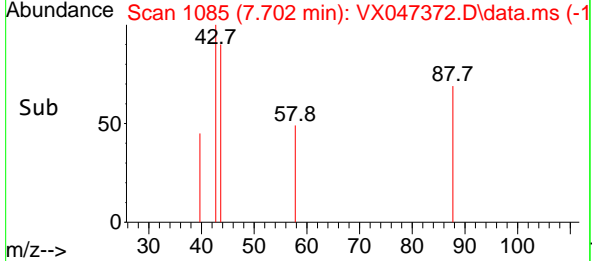
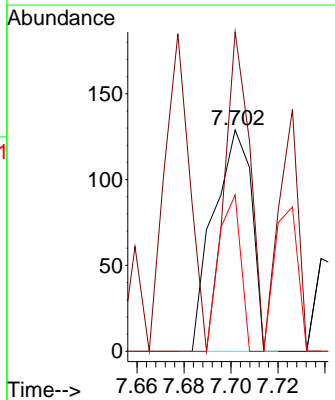
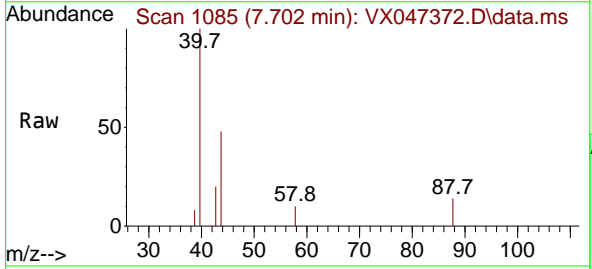


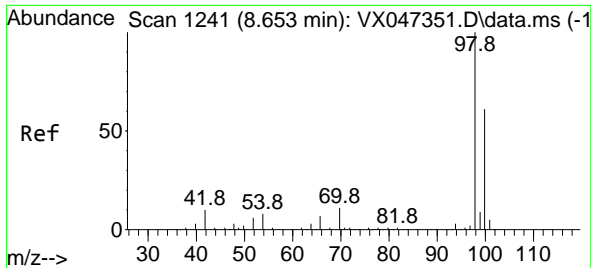
Tgt Ion:117 Resp: 19953
 Ion Ratio Lower Upper
 117 100
 119 7.1 78.5 117.7#
 121 0.0 24.7 37.1#



#49
 1,4-Dioxane
 Concen: 5.281 ug/l
 RT: 7.702 min Scan# 1085
 Delta R.T. 0.024 min
 Lab File: VX047372.D
 Acq: 18 Aug 2025 10:28

Tgt Ion: 88 Resp: 146
 Ion Ratio Lower Upper
 88 100
 43 95.2 32.4 48.6#
 58 41.1 56.9 85.3#

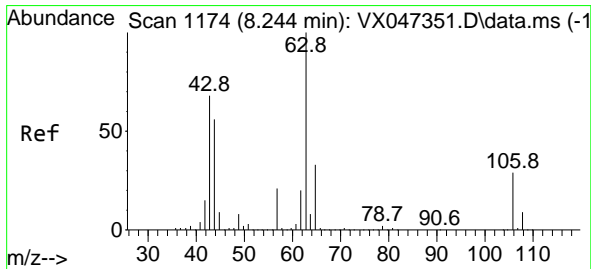
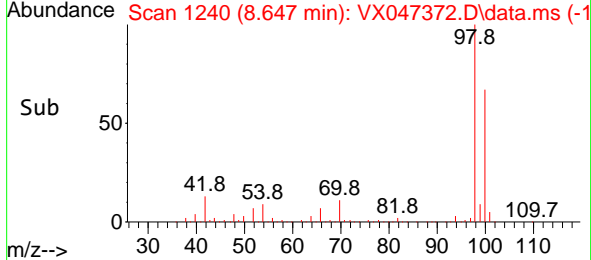
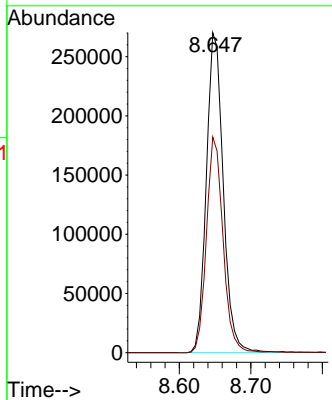
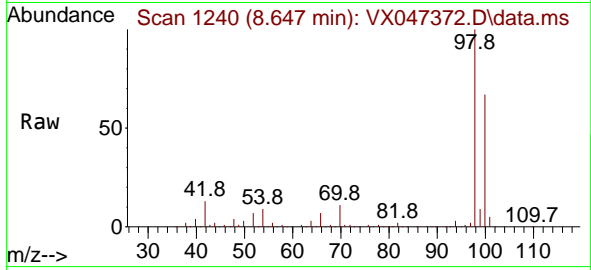




#50
 Toluene-d8
 Concen: 53.233 ug/l
 RT: 8.647 min Scan# 1147
 Delta R.T. -0.006 min
 Lab File: VX047372.D
 Acq: 18 Aug 2025 10:28

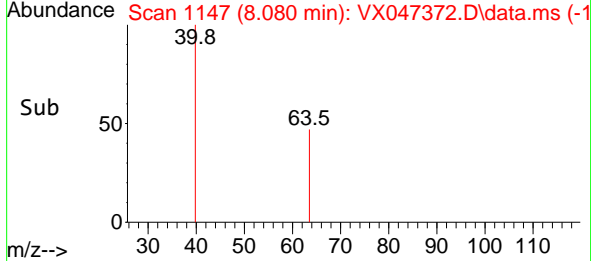
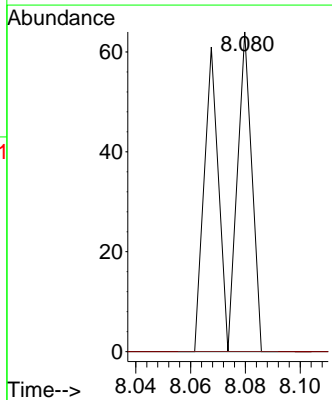
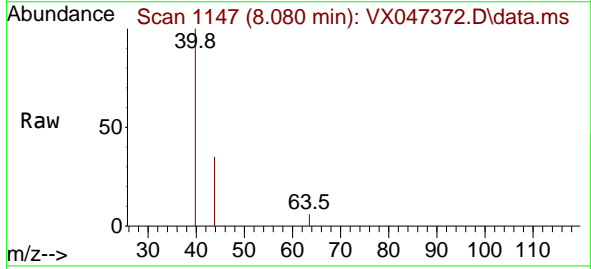
Instrument : MSVOA_X
 ClientSampleId : VX0818MBL01

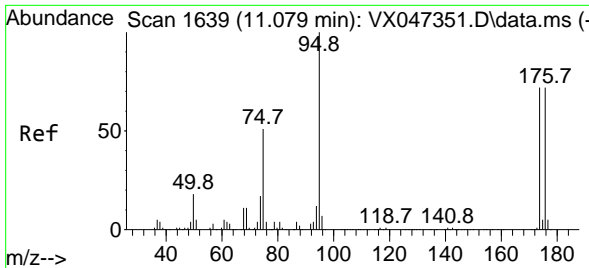
Tgt Ion: 98 Resp: 442801
 Ion Ratio Lower Upper
 98 100
 100 66.2 53.9 80.9



#58
 2-Chloroethyl Vinyl ether
 Concen: 8.380 ug/l
 RT: 8.080 min Scan# 1147
 Delta R.T. -0.165 min
 Lab File: VX047372.D
 Acq: 18 Aug 2025 10:28

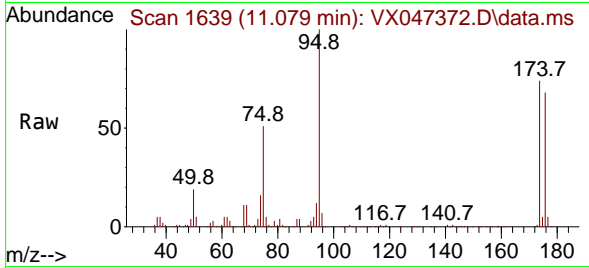
Tgt Ion: 63 Resp: 46
 Ion Ratio Lower Upper
 63 100
 106 0.0 22.8 34.2#



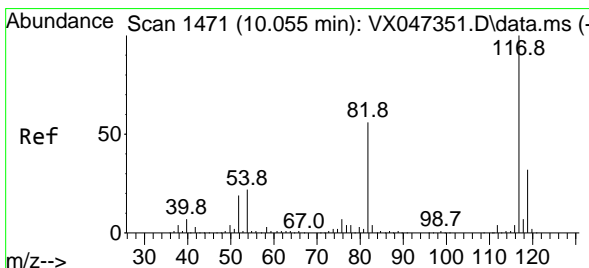
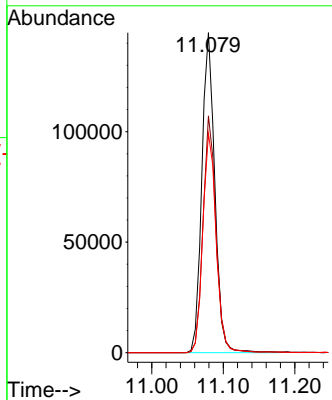
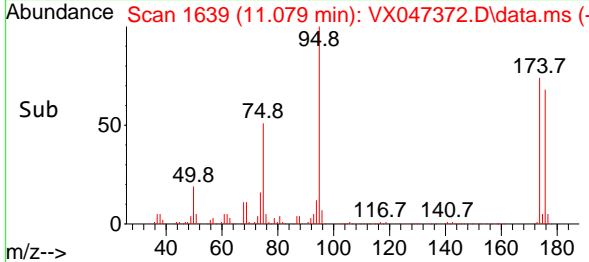


#62
 4-Bromofluorobenzene
 Concen: 59.387 ug/l
 RT: 11.079 min Scan# 1639
 Delta R.T. 0.000 min
 Lab File: VX047372.D
 Acq: 18 Aug 2025 10:28

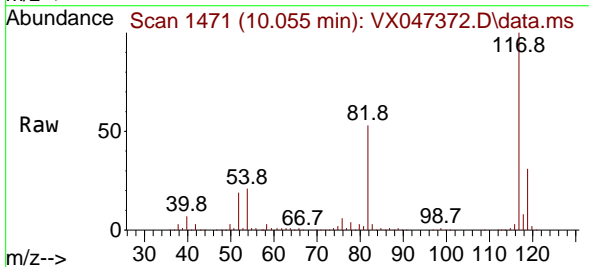
Instrument :
 MSVOA_X
 ClientSampleId :
 VX0818MBL01



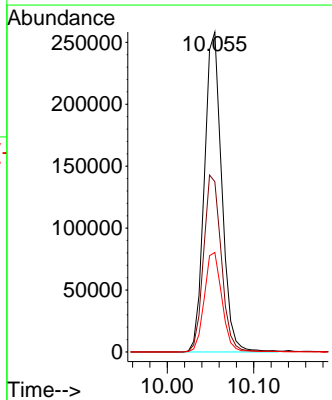
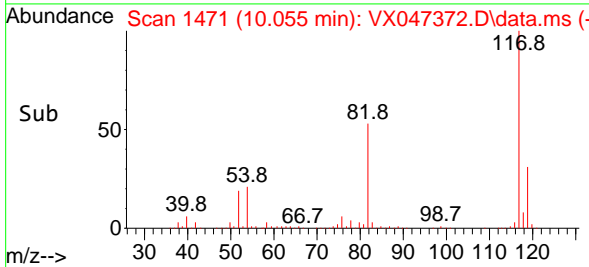
Tgt Ion: 95 Resp: 182292
 Ion Ratio Lower Upper
 95 100
 174 74.4 0.0 148.0
 176 70.4 0.0 145.4

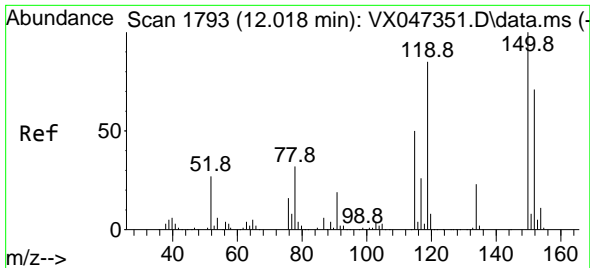


#63
 Chlorobenzene-d5
 Concen: 50.000 ug/l
 RT: 10.055 min Scan# 1471
 Delta R.T. 0.000 min
 Lab File: VX047372.D
 Acq: 18 Aug 2025 10:28



Tgt Ion: 117 Resp: 359943
 Ion Ratio Lower Upper
 117 100
 82 53.2 45.0 67.4
 119 31.1 25.8 38.8

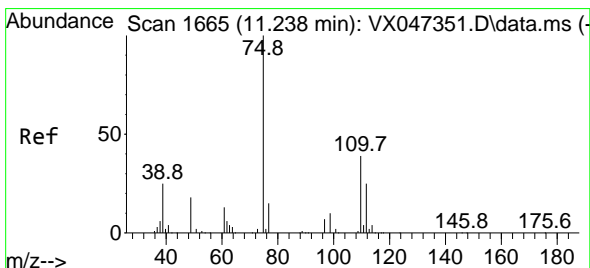
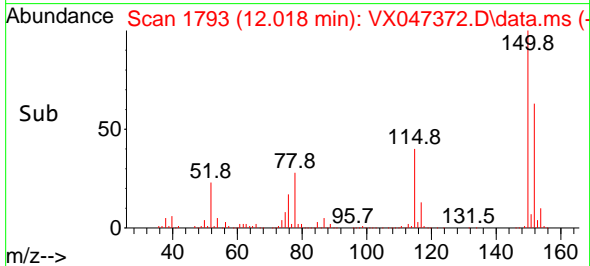
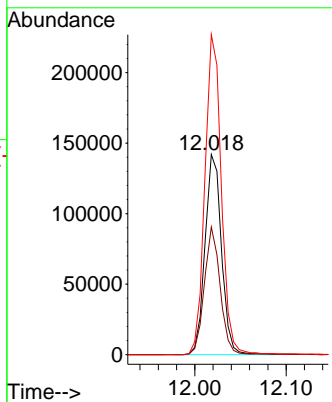
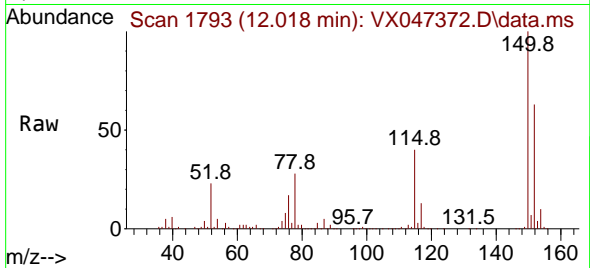




#72
 1,4-Dichlorobenzene-d4
 Concen: 50.000 ug/l
 RT: 12.018 min Scan# 11
 Delta R.T. 0.000 min
 Lab File: VX047372.D
 Acq: 18 Aug 2025 10:28

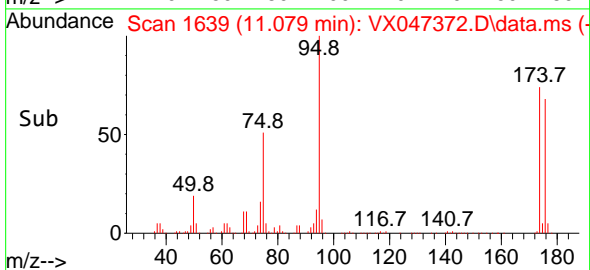
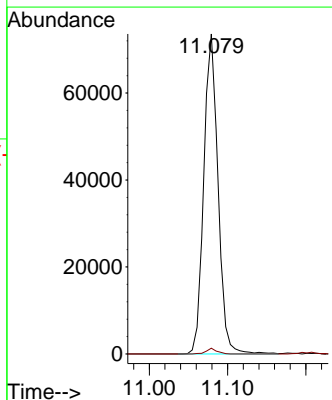
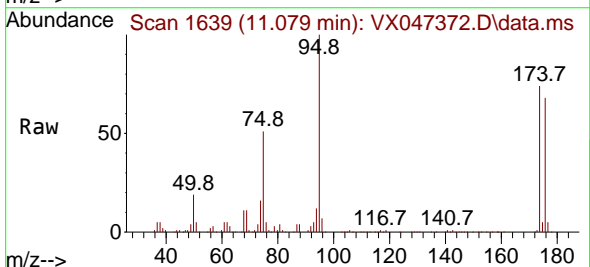
Instrument :
 MSVOA_X
 ClientSampleId :
 VX0818MBL01

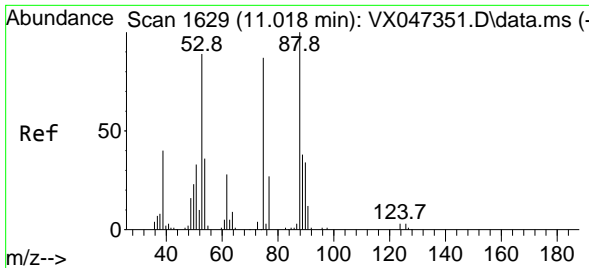
Tgt Ion:152 Resp: 177351
 Ion Ratio Lower Upper
 152 100
 115 61.5 44.6 133.8
 150 159.3 0.0 349.8



#76
 1,2,3-Trichloropropane
 Concen: 28.521 ug/l
 RT: 11.079 min Scan# 1639
 Delta R.T. -0.158 min
 Lab File: VX047372.D
 Acq: 18 Aug 2025 10:28

Tgt Ion: 75 Resp: 92774
 Ion Ratio Lower Upper
 75 100
 77 1.3 19.4 58.2#



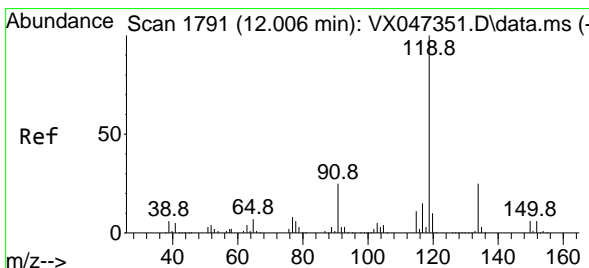
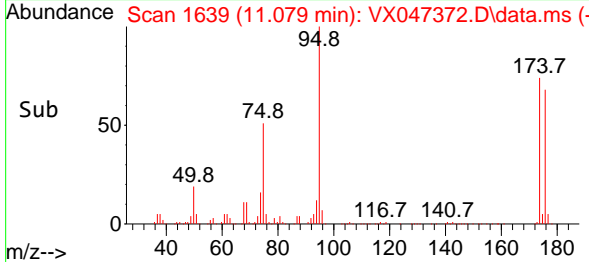
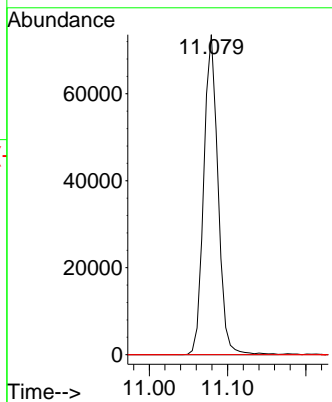
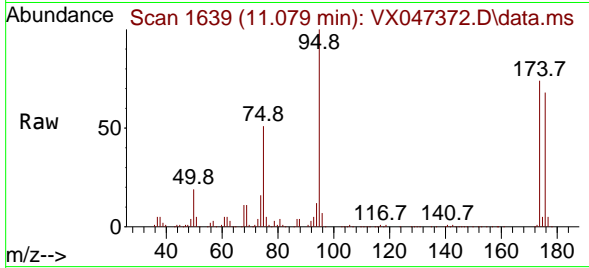


#81
 trans-1,4-Dichloro-2-butene
 Concen: 112.340 ug/l
 RT: 11.079 min Scan# 1639
 Delta R.T. 0.061 min
 Lab File: VX047372.D
 Acq: 18 Aug 2025 10:28

Instrument :
 MSVOA_X
 ClientSampleId :
 VX0818MBL01

Tgt Ion: 75 Resp: 92774

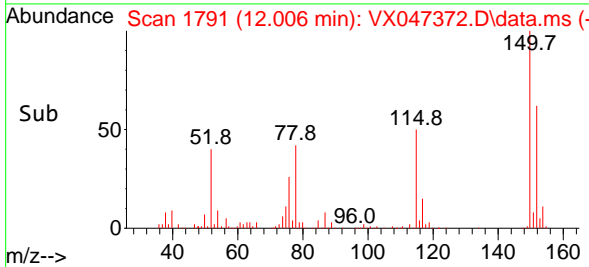
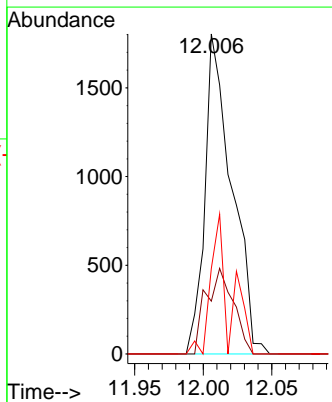
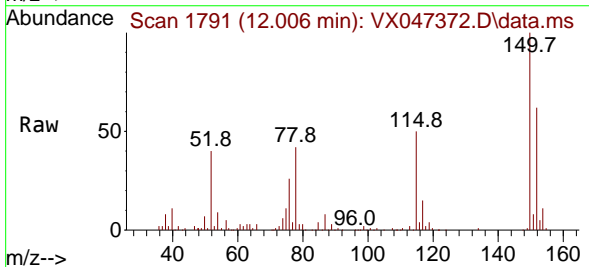
Ion	Ratio	Lower	Upper
75	100		
53	0.0	85.2	127.8#
89	0.0	36.7	55.1#

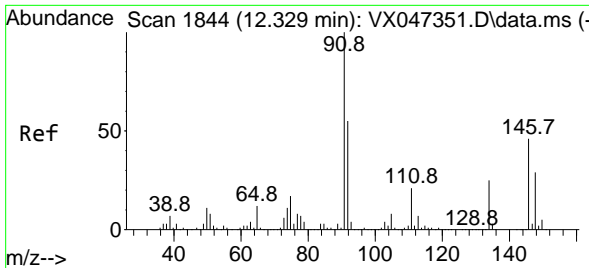


#86
 p-Isopropyltoluene
 Concen: 0.207 ug/l
 RT: 12.006 min Scan# 1791
 Delta R.T. 0.000 min
 Lab File: VX047372.D
 Acq: 18 Aug 2025 10:28

Tgt Ion: 119 Resp: 2470

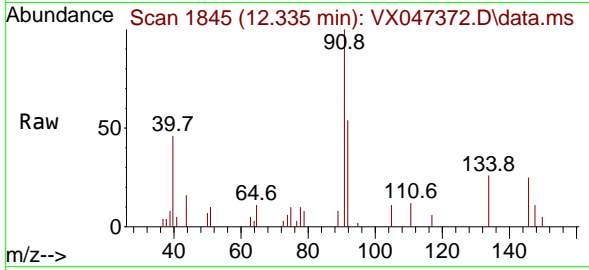
Ion	Ratio	Lower	Upper
119	100		
134	27.2	12.8	38.4
91	30.6	12.4	37.4





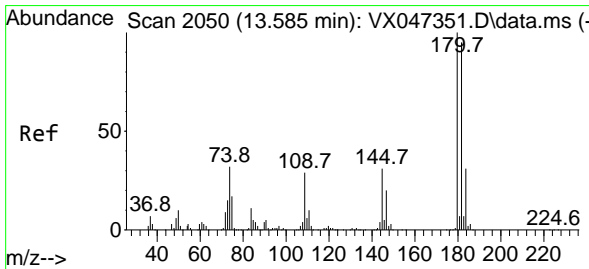
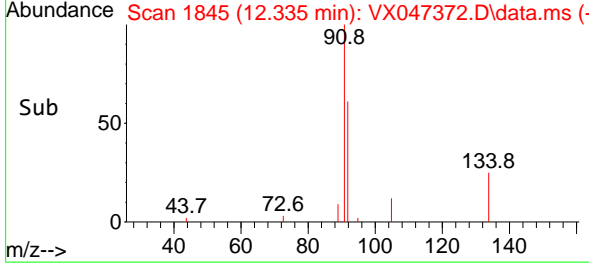
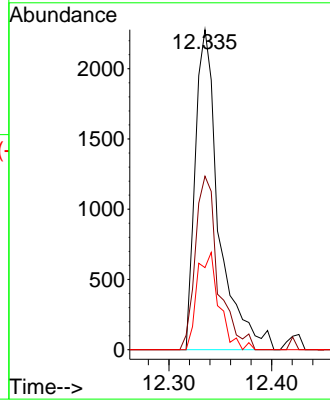
#89
 n-Butylbenzene
 Concen: 0.327 ug/l
 RT: 12.335 min Scan# 1845
 Delta R.T. 0.006 min
 Lab File: VX047372.D
 Acq: 18 Aug 2025 10:28

Instrument : MSVOA_X
 ClientSampleId : VX0818MBL01



Tgt Ion: 91 Resp: 3637

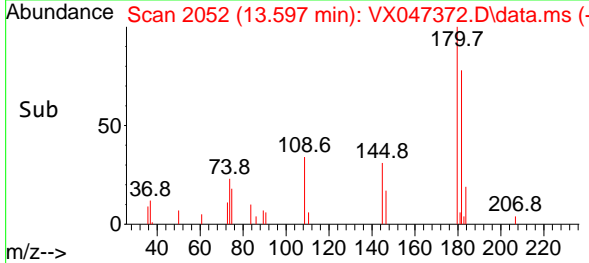
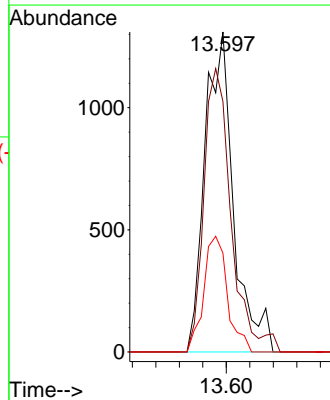
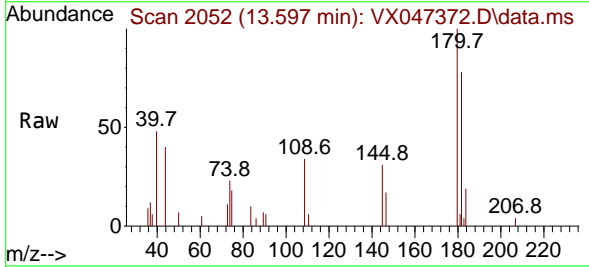
Ion	Ratio	Lower	Upper
91	100		
92	52.8	27.2	81.5
134	28.5	12.6	37.8

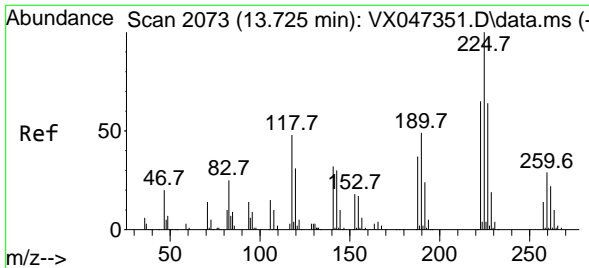


#93
 1,2,4-Trichlorobenzene
 Concen: 0.537 ug/l
 RT: 13.597 min Scan# 2052
 Delta R.T. 0.012 min
 Lab File: VX047372.D
 Acq: 18 Aug 2025 10:28

Tgt Ion: 180 Resp: 2213

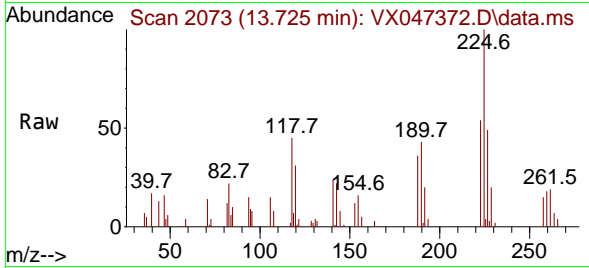
Ion	Ratio	Lower	Upper
180	100		
182	84.3	48.1	144.4
145	30.1	16.2	48.5



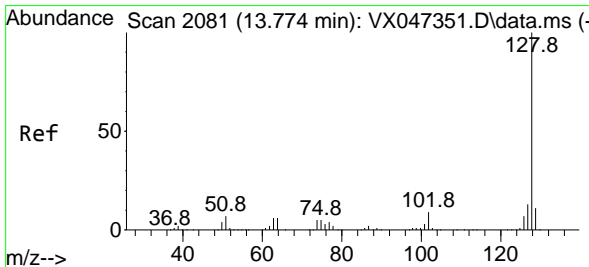
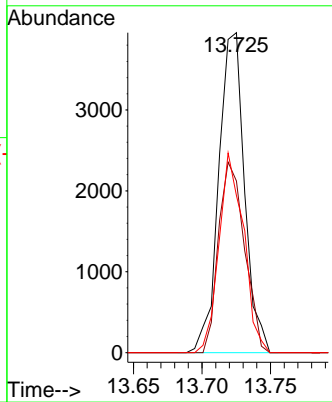
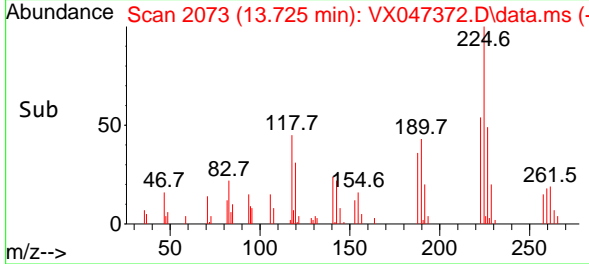


#94
 Hexachlorobutadiene
 Concen: 3.522 ug/l
 RT: 13.725 min Scan# 2073
 Delta R.T. 0.000 min
 Lab File: VX047372.D
 Acq: 18 Aug 2025 10:28

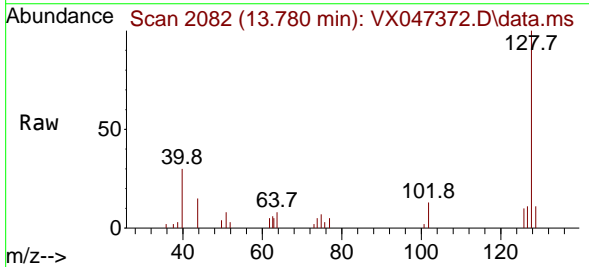
Instrument : MSVOA_X
 ClientSampleId : VX0818MBL01



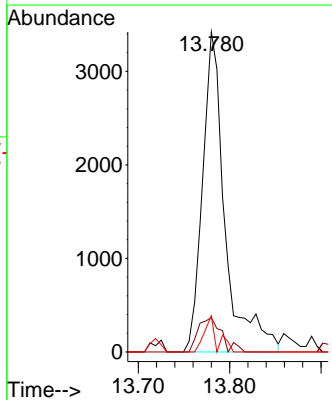
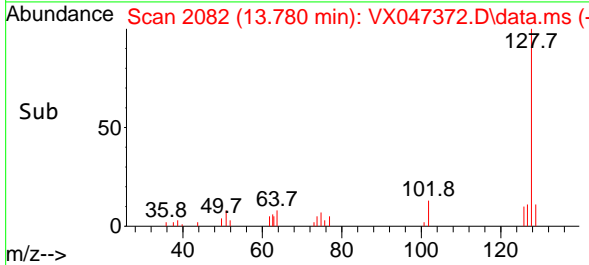
Tgt Ion:225 Resp: 5164
 Ion Ratio Lower Upper
 225 100
 223 60.3 32.2 96.6
 227 59.6 31.6 95.0

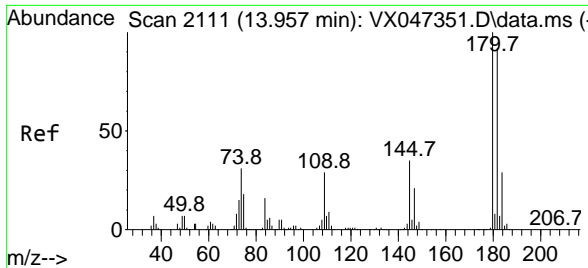


#95
 Naphthalene
 Concen: 0.498 ug/l
 RT: 13.780 min Scan# 2082
 Delta R.T. 0.006 min
 Lab File: VX047372.D
 Acq: 18 Aug 2025 10:28



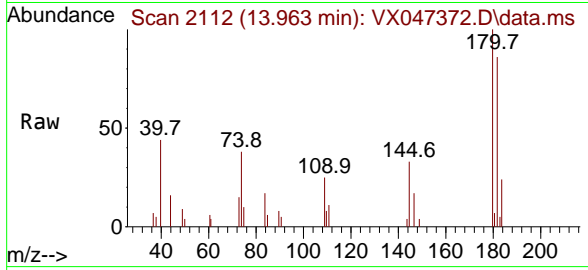
Tgt Ion:128 Resp: 5858
 Ion Ratio Lower Upper
 128 100
 127 11.1 10.1 15.1
 129 6.4 8.7 13.1#





#96
 1,2,3-Trichlorobenzene
 Concen: 0.595 ug/l
 RT: 13.963 min Scan# 2112
 Delta R.T. 0.006 min
 Lab File: VX047372.D
 Acq: 18 Aug 2025 10:28

Instrument :
 MSVOA_X
 ClientSampleId :
 VX0818MBL01



Tgt Ion:180 Resp: 2309

Ion	Ratio	Lower	Upper
180	100		
182	94.6	48.0	144.2
145	28.6	17.4	52.2

