

Data Path : Z:\voasrv\HPCHEM1\MSVOA_X\Data\VX081825\
 Data File : VX047373.D
 Acq On : 18 Aug 2025 11:50
 Operator : JC/MD
 Sample : VX0818WBL01
 Misc : 5.0mL/MSVOA_X/WATER
 ALS Vial : 4 Sample Multiplier: 1

Instrument :
 MSVOA_X
ClientSampleId :
 VX0818WBL01

Quant Time: Aug 19 01:38:25 2025
 Quant Method : Z:\voasrv\HPCHEM1\MSVOA_X\Method\82X081525W.M
 Quant Title : SW846 8260
 QLast Update : Mon Aug 18 04:18:28 2025
 Response via : Initial Calibration

Compound	R.T.	QIon	Response	Conc	Units	Dev(Min)

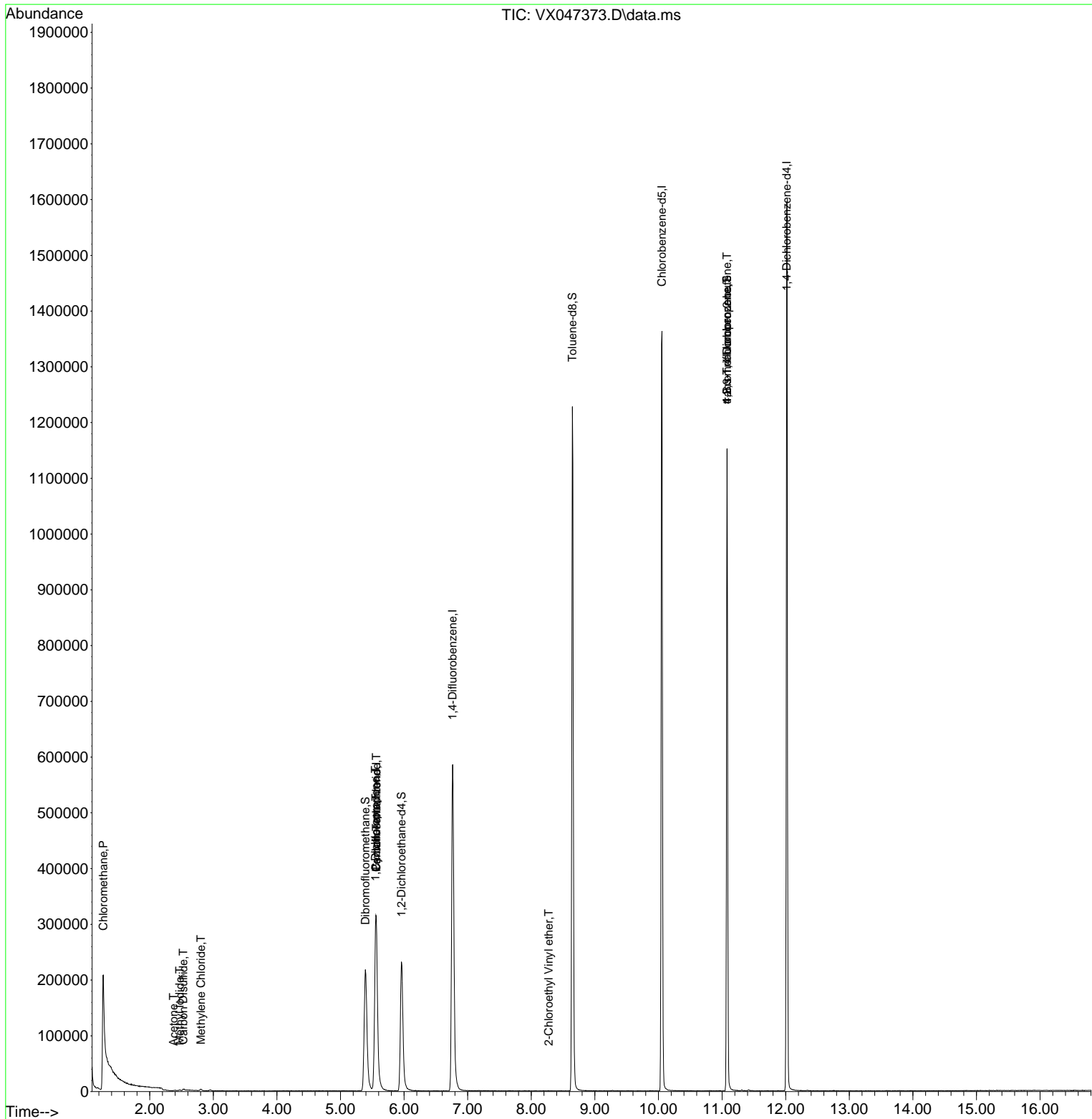
Internal Standards						
1) Pentafluorobenzene	5.562	168	325331	50.000	ug/l	0.00
34) 1,4-Difluorobenzene	6.763	114	630884	50.000	ug/l	0.00
63) Chlorobenzene-d5	10.055	117	620229	50.000	ug/l	0.00
72) 1,4-Dichlorobenzene-d4	12.018	152	309313	50.000	ug/l	0.00
System Monitoring Compounds						
33) 1,2-Dichloroethane-d4	5.958	65	246116	54.054	ug/l	0.00
Spiked Amount	50.000	Range 78 - 117	Recovery	=	108.100%	
35) Dibromofluoromethane	5.391	113	208435	50.906	ug/l	0.00
Spiked Amount	50.000	Range 75 - 124	Recovery	=	101.820%	
50) Toluene-d8	8.647	98	734400	50.182	ug/l	0.00
Spiked Amount	50.000	Range 92 - 112	Recovery	=	100.360%	
62) 4-Bromofluorobenzene	11.079	95	302912	56.089	ug/l	0.00
Spiked Amount	50.000	Range 83 - 123	Recovery	=	112.180%	
Target Compounds						
					Qvalue	
3) Chloromethane	1.270	50	8121	2.177	ug/l #	41
10) Methyl Iodide	2.471	142	1718	0.250	ug/l #	75
16) Acetone	2.373	43	673	0.393	ug/l #	44
17) Carbon Disulfide	2.526	76	6036	0.488	ug/l #	94
20) Methylene Chloride	2.806	84	1405	0.310	ug/l	86
31) Cyclohexane	5.556	56	6917	0.944	ug/l #	1
36) 1,1-Dichloropropene	5.550	75	27671	4.281	ug/l #	51
38) Carbon Tetrachloride	5.562	117	34636	4.904	ug/l #	15
58) 2-Chloroethyl Vinyl ether	8.275	63	43	8.368	ug/l #	46
76) 1,2,3-Trichloropropane	11.079	75	155854	27.472	ug/l #	38
81) trans-1,4-Dichloro-2-b...	11.079	75	155854	108.498	ug/l #	7

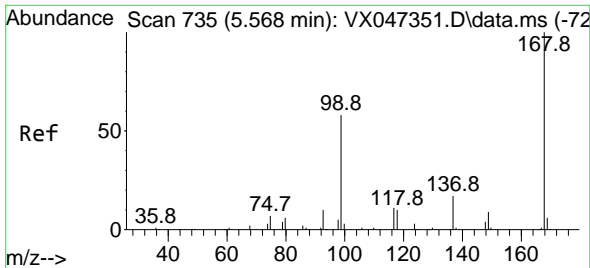
(#) = qualifier out of range (m) = manual integration (+) = signals summed

Data Path : Z:\voasrv\HPCHEM1\MSVOA_X\Data\VX081825\
 Data File : VX047373.D
 Acq On : 18 Aug 2025 11:50
 Operator : JC/MD
 Sample : VX0818WBL01
 Misc : 5.0mL/MSVOA_X/WATER
 ALS Vial : 4 Sample Multiplier: 1

Instrument :
 MSVOA_X
 ClientSampleId :
 VX0818WBL01

Quant Time: Aug 19 01:38:25 2025
 Quant Method : Z:\voasrv\HPCHEM1\MSVOA_X\Method\82X081525W.M
 Quant Title : SW846 8260
 QLast Update : Mon Aug 18 04:18:28 2025
 Response via : Initial Calibration

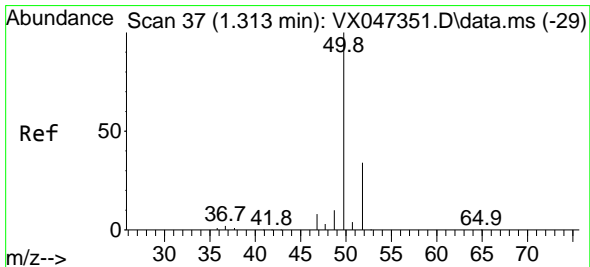
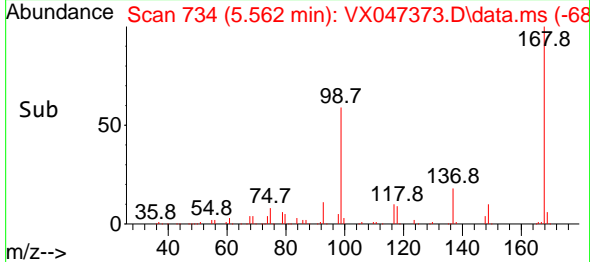
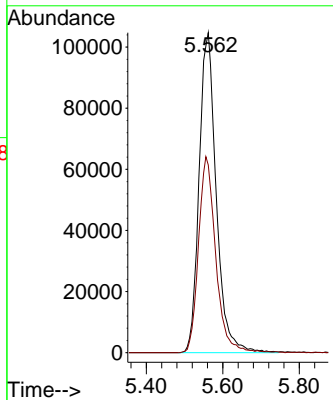
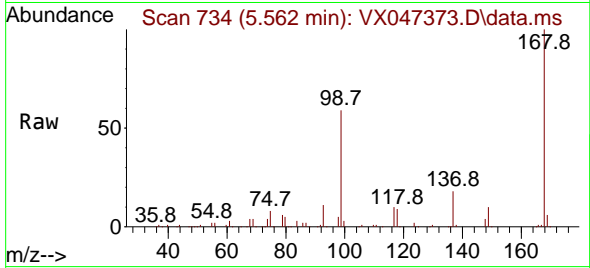




#1
 Pentafluorobenzene
 Concen: 50.000 ug/l
 RT: 5.562 min Scan# 71
 Delta R.T. -0.006 min
 Lab File: VX047373.D
 Acq: 18 Aug 2025 11:50

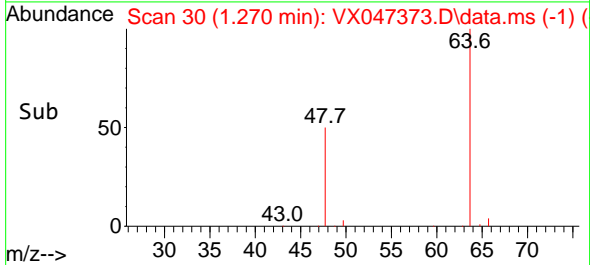
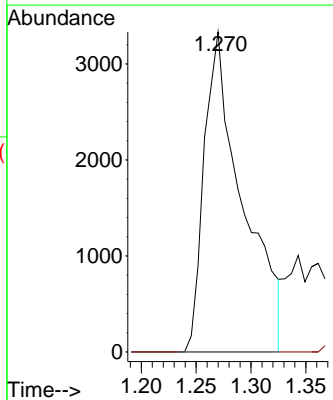
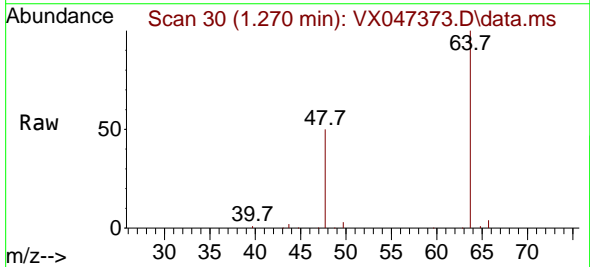
Instrument :
 MSVOA_X
 ClientSampleId :
 VX0818WBL01

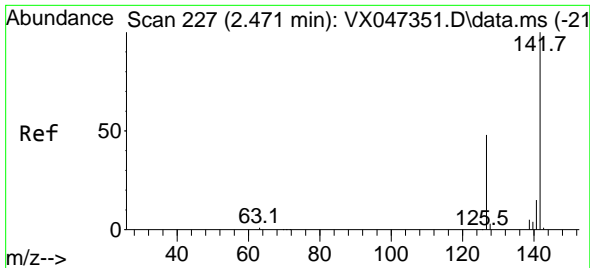
Tgt Ion:168 Resp: 325331
 Ion Ratio Lower Upper
 168 100
 99 58.7 47.9 71.9



#3
 Chloromethane
 Concen: 2.177 ug/l
 RT: 1.270 min Scan# 30
 Delta R.T. -0.043 min
 Lab File: VX047373.D
 Acq: 18 Aug 2025 11:50

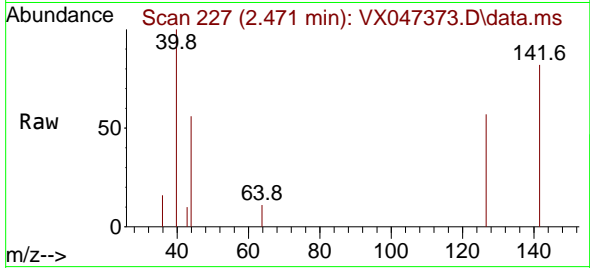
Tgt Ion: 50 Resp: 8121
 Ion Ratio Lower Upper
 50 100
 52 0.0 27.0 40.4#



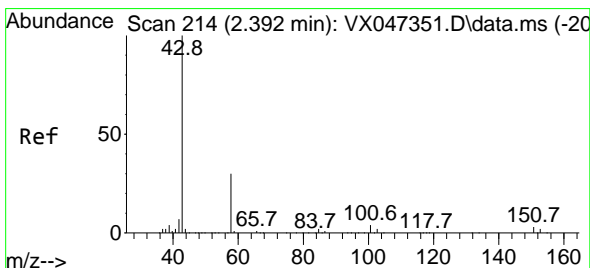
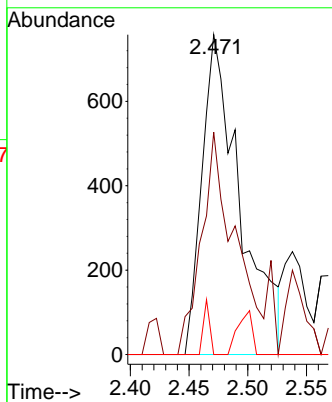
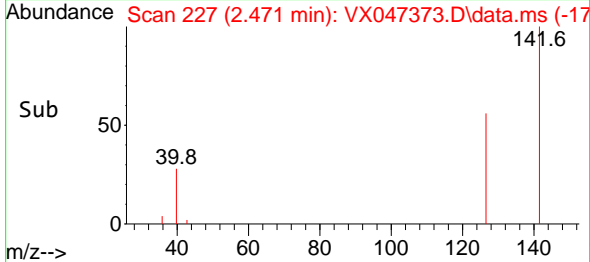


#10
 Methyl Iodide
 Concen: 0.250 ug/l
 RT: 2.471 min Scan# 211
 Delta R.T. -0.000 min
 Lab File: VX047373.D
 Acq: 18 Aug 2025 11:50

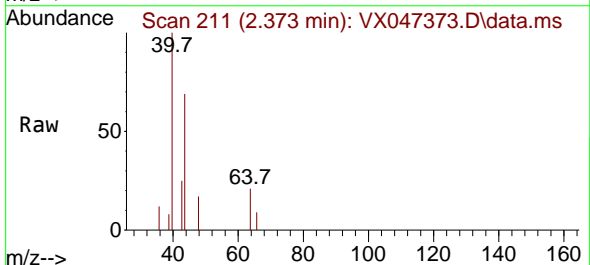
Instrument : MSVOA_X
 Client Sample Id : VX0818WBL01



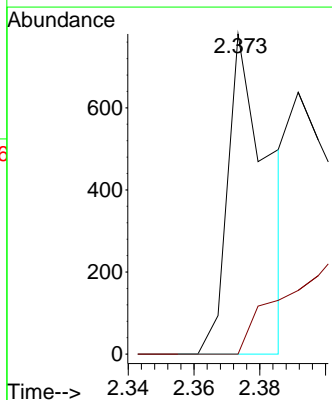
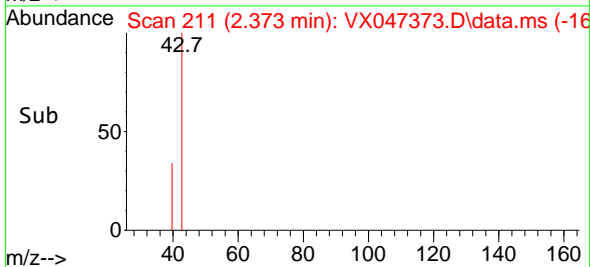
Tgt Ion: 142 Resp: 1718
 Ion Ratio Lower Upper
 142 100
 127 60.9 36.1 54.1#
 141 2.8 11.1 16.7#

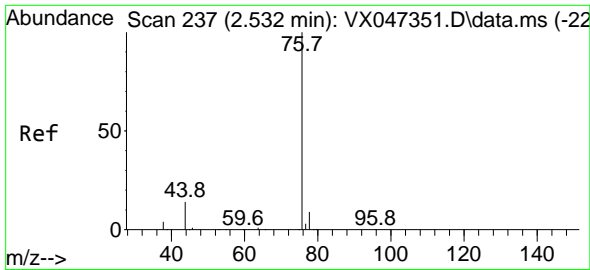


#16
 Acetone
 Concen: 0.393 ug/l
 RT: 2.373 min Scan# 211
 Delta R.T. -0.018 min
 Lab File: VX047373.D
 Acq: 18 Aug 2025 11:50



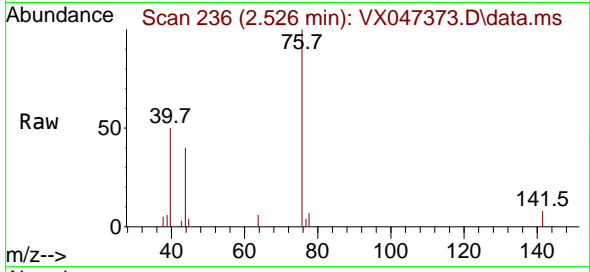
Tgt Ion: 43 Resp: 673
 Ion Ratio Lower Upper
 43 100
 58 0.0 24.8 37.2#



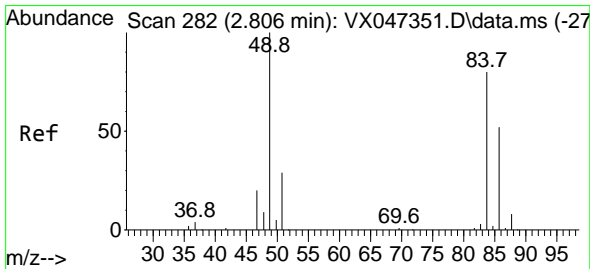
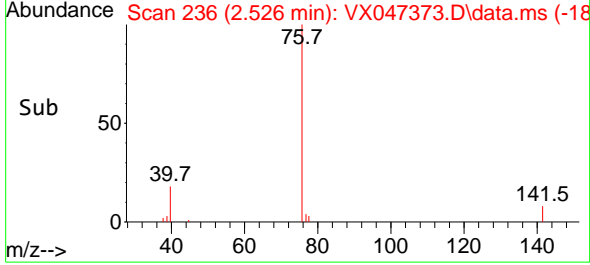
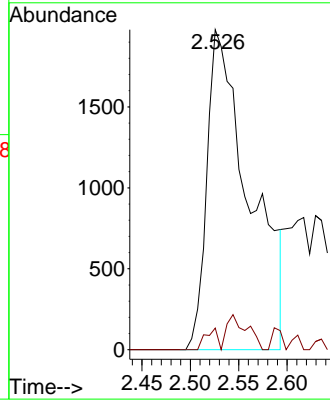


#17
 Carbon Disulfide
 Concen: 0.488 ug/l
 RT: 2.526 min Scan# 211
 Delta R.T. -0.006 min
 Lab File: VX047373.D
 Acq: 18 Aug 2025 11:50

Instrument : MSVOA_X
 ClientSampleId : VX0818WBL01

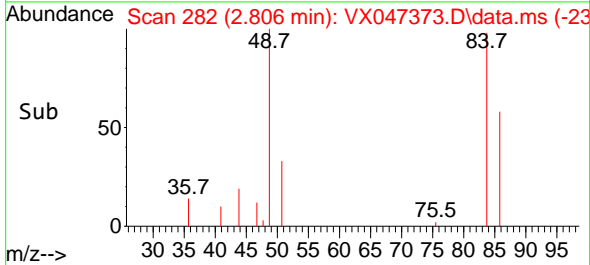
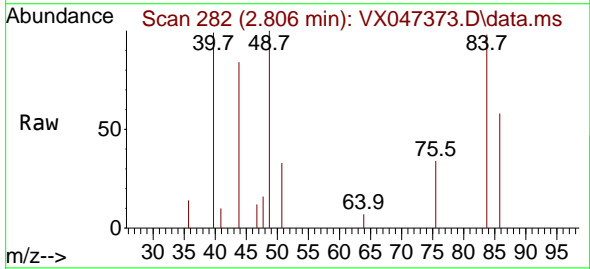
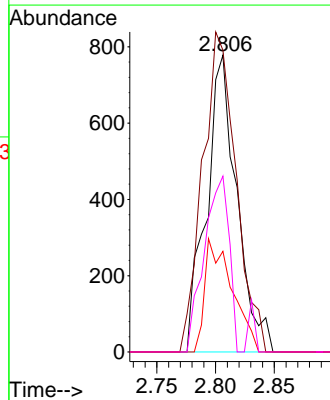


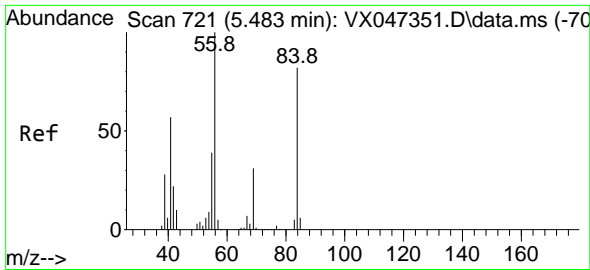
Tgt Ion: 76 Resp: 6036
 Ion Ratio Lower Upper
 76 100
 78 6.8 7.2 10.8#



#20
 Methylene Chloride
 Concen: 0.310 ug/l
 RT: 2.806 min Scan# 282
 Delta R.T. -0.000 min
 Lab File: VX047373.D
 Acq: 18 Aug 2025 11:50

Tgt Ion: 84 Resp: 1405
 Ion Ratio Lower Upper
 84 100
 49 101.7 100.1 150.1
 51 33.9 29.5 44.3
 86 59.3 51.8 77.8

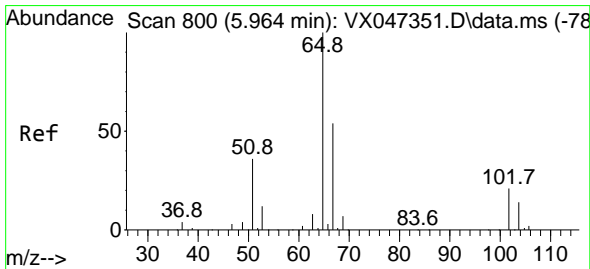
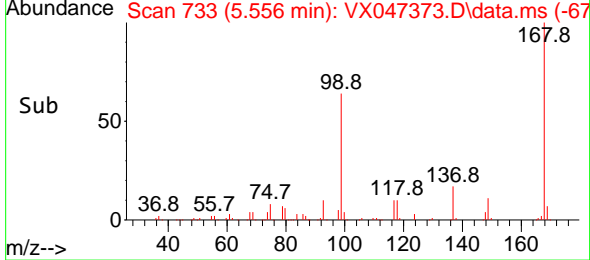
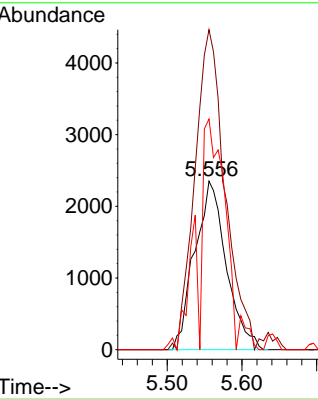
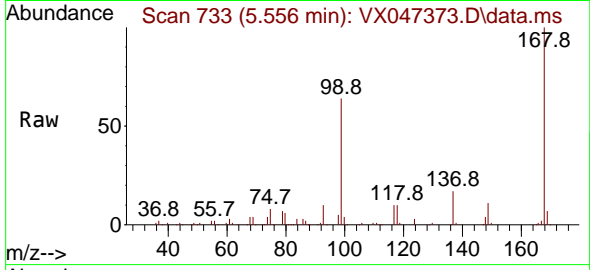




#31
 Cyclohexane
 Concen: 0.944 ug/l
 RT: 5.556 min Scan# 719
 Delta R.T. 0.073 min
 Lab File: VX047373.D
 Acq: 18 Aug 2025 11:50

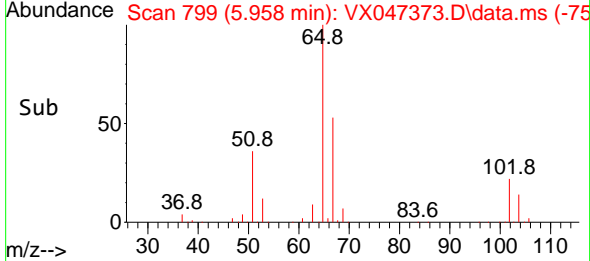
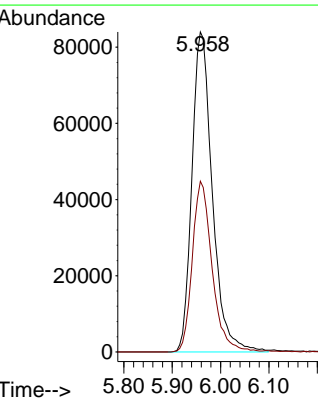
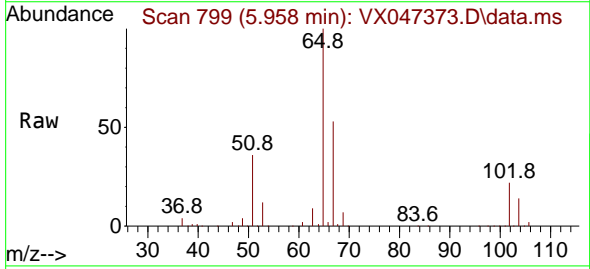
Instrument : MSVOA_X
 ClientSampleId : VX0818WBL01

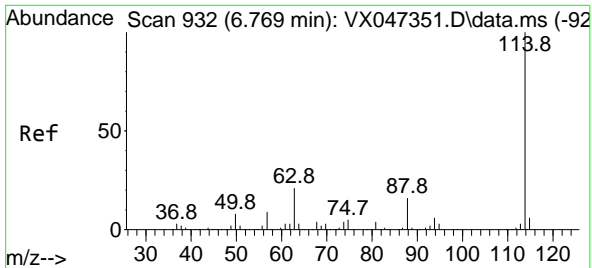
Tgt Ion	Resp	Lower	Upper
56	6917		
56	100		
69	189.9	24.3	36.5#
84	133.9	65.3	97.9#



#33
 1,2-Dichloroethane-d4
 Concen: 54.054 ug/l
 RT: 5.958 min Scan# 799
 Delta R.T. -0.006 min
 Lab File: VX047373.D
 Acq: 18 Aug 2025 11:50

Tgt Ion	Resp	Lower	Upper
65	246116		
65	100		
67	51.8	0.0	106.0



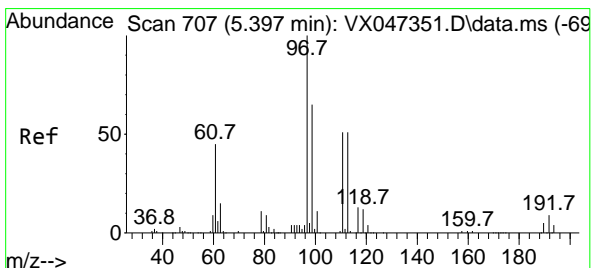
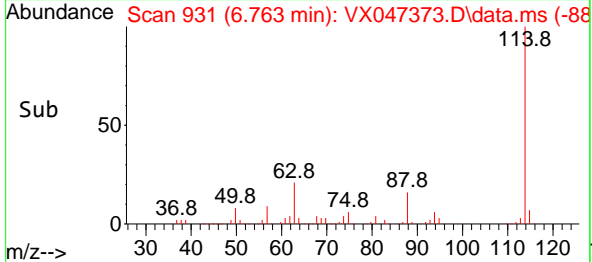
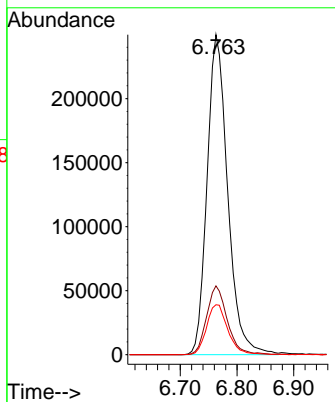
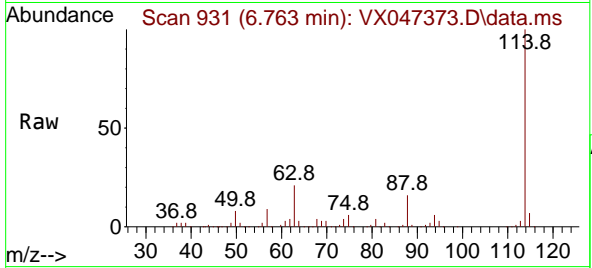


#34
 1,4-Difluorobenzene
 Concen: 50.000 ug/l
 RT: 6.763 min Scan# 91
 Delta R.T. -0.006 min
 Lab File: VX047373.D
 Acq: 18 Aug 2025 11:50

Instrument :
 MSVOA_X
 ClientSampleId :
 VX0818WBL01

Tgt Ion:114 Resp: 630884

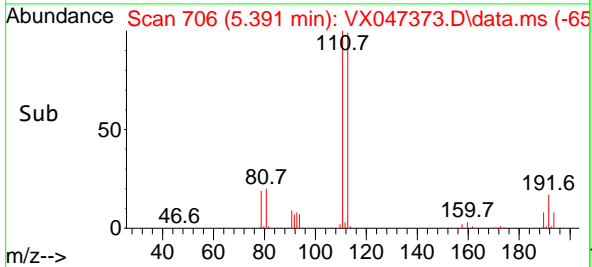
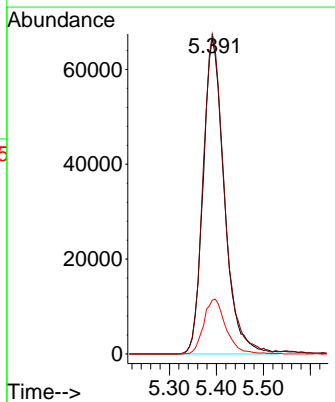
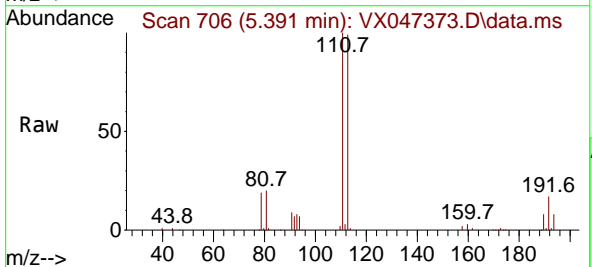
Ion	Ratio	Lower	Upper
114	100		
63	21.5	0.0	42.4
88	15.6	0.0	33.0

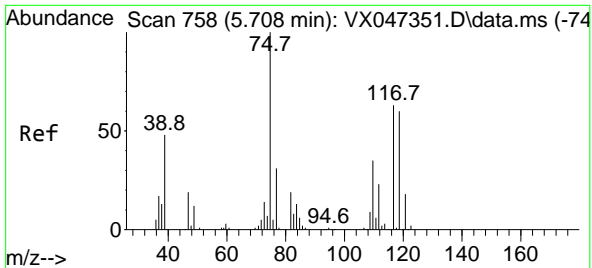


#35
 Dibromofluoromethane
 Concen: 50.906 ug/l
 RT: 5.391 min Scan# 706
 Delta R.T. -0.006 min
 Lab File: VX047373.D
 Acq: 18 Aug 2025 11:50

Tgt Ion:113 Resp: 208435

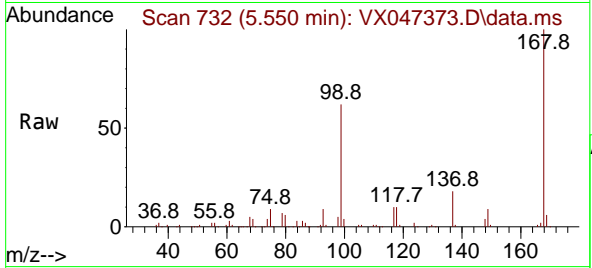
Ion	Ratio	Lower	Upper
113	100		
111	101.8	81.4	122.2
192	18.2	14.1	21.1



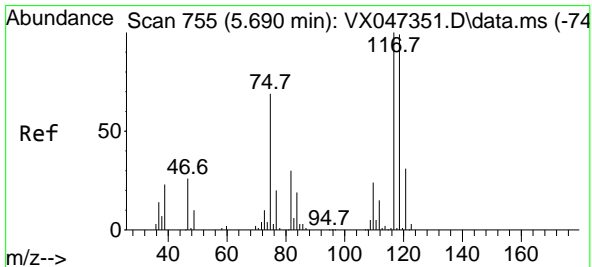
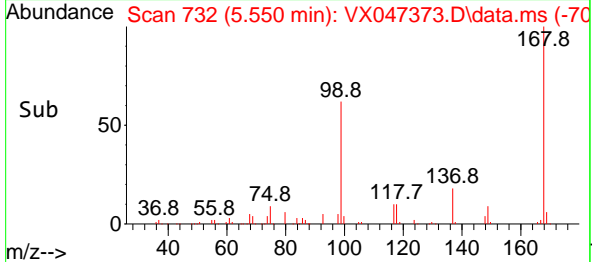
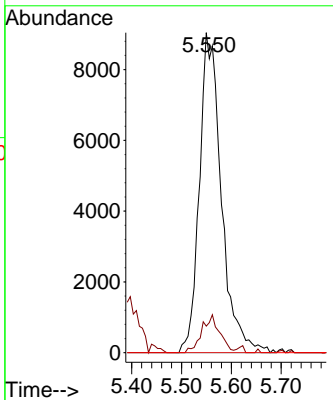


#36
 1,1-Dichloropropene
 Concen: 4.281 ug/l
 RT: 5.550 min Scan# 71
 Delta R.T. -0.159 min
 Lab File: VX047373.D
 Acq: 18 Aug 2025 11:50

Instrument :
 MSVOA_X
 ClientSampleId :
 VX0818WBL01

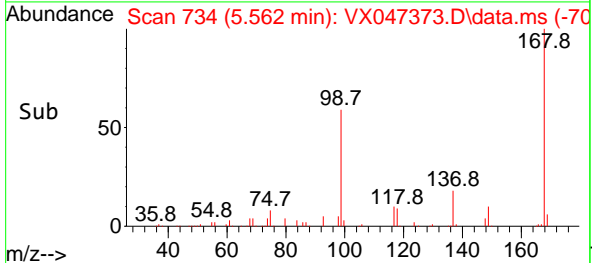
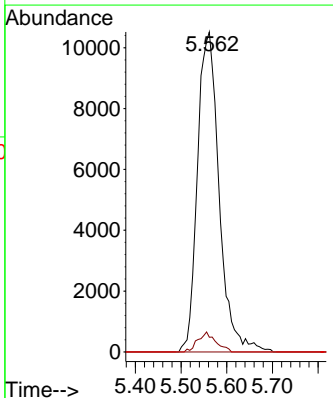
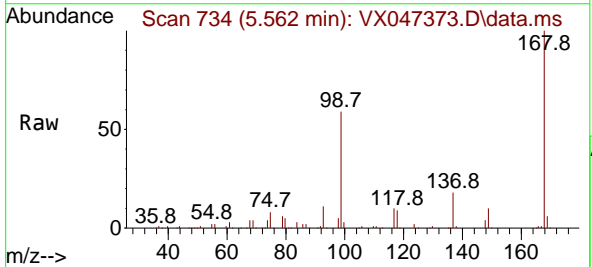


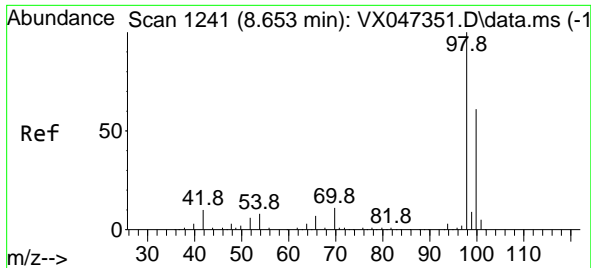
Tgt Ion: 75 Resp: 27671
 Ion Ratio Lower Upper
 75 100
 110 9.6 17.4 52.2#
 77 0.0 24.4 36.6#



#38
 Carbon Tetrachloride
 Concen: 4.904 ug/l
 RT: 5.562 min Scan# 734
 Delta R.T. -0.128 min
 Lab File: VX047373.D
 Acq: 18 Aug 2025 11:50

Tgt Ion: 117 Resp: 34636
 Ion Ratio Lower Upper
 117 100
 119 4.6 78.5 117.7#
 121 0.0 24.7 37.1#

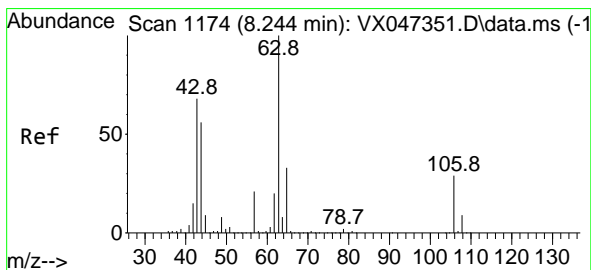
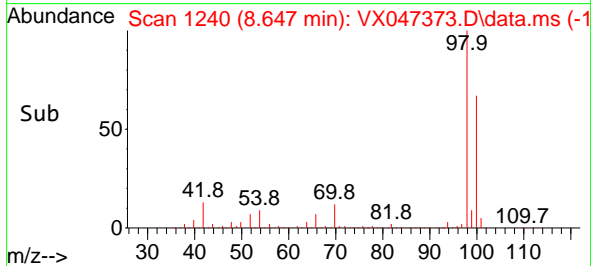
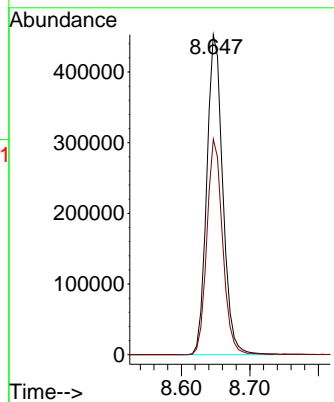
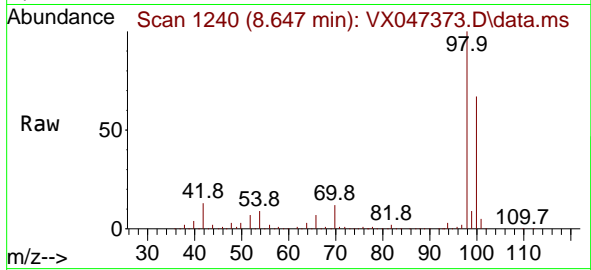




#50
 Toluene-d8
 Concen: 50.182 ug/l
 RT: 8.647 min Scan# 1179
 Delta R.T. -0.006 min
 Lab File: VX047373.D
 Acq: 18 Aug 2025 11:50

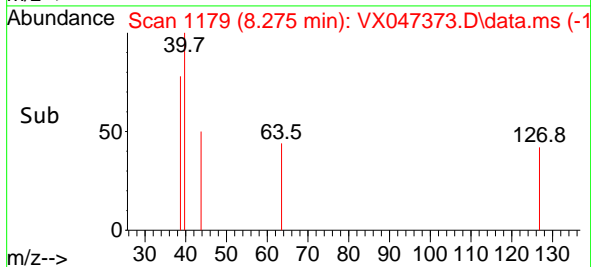
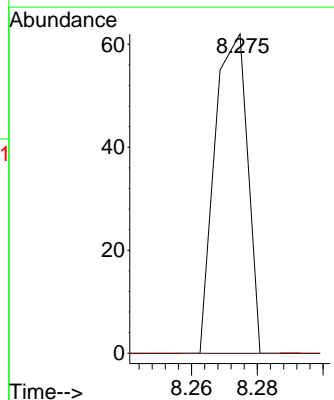
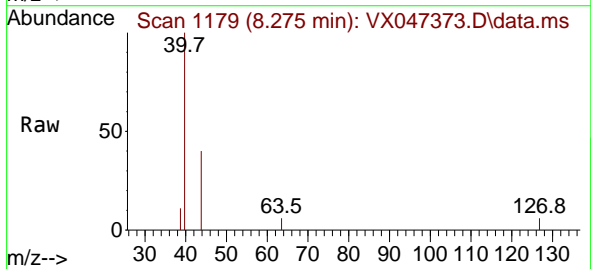
Instrument :
 MSVOA_X
 ClientSampleId :
 VX0818WBL01

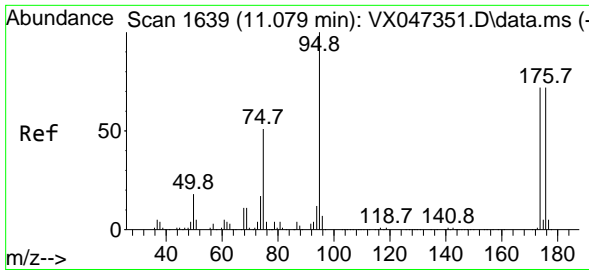
Tgt Ion: 98 Resp: 734400
 Ion Ratio Lower Upper
 98 100
 100 66.5 53.9 80.9



#58
 2-Chloroethyl Vinyl ether
 Concen: 8.368 ug/l
 RT: 8.275 min Scan# 1179
 Delta R.T. 0.030 min
 Lab File: VX047373.D
 Acq: 18 Aug 2025 11:50

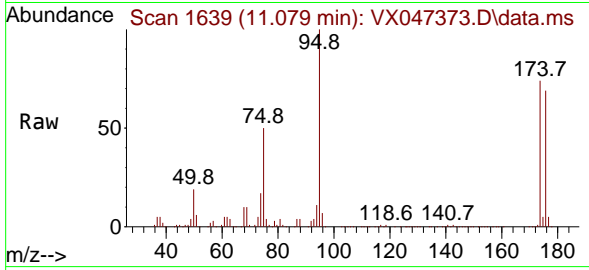
Tgt Ion: 63 Resp: 43
 Ion Ratio Lower Upper
 63 100
 106 0.0 22.8 34.2#



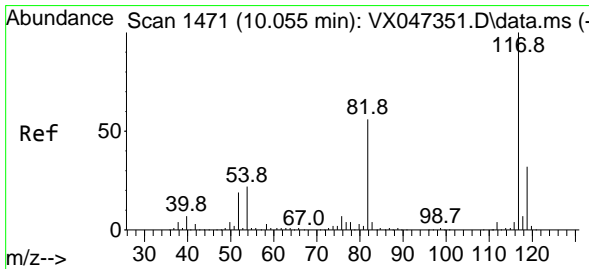
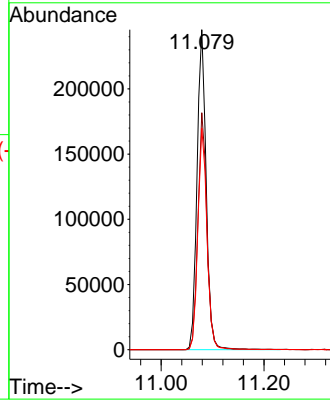
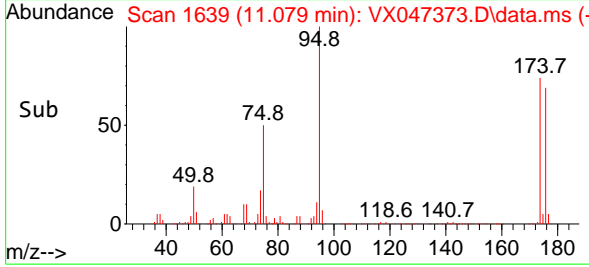


#62
 4-Bromofluorobenzene
 Concen: 56.089 ug/l
 RT: 11.079 min Scan# 1639
 Delta R.T. -0.000 min
 Lab File: VX047373.D
 Acq: 18 Aug 2025 11:50

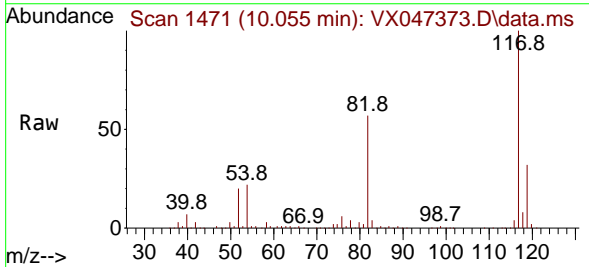
Instrument : MSVOA_X
 ClientSampleId : VX0818WBL01



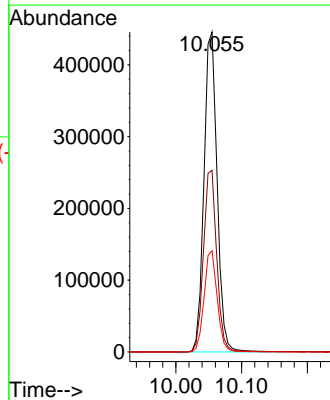
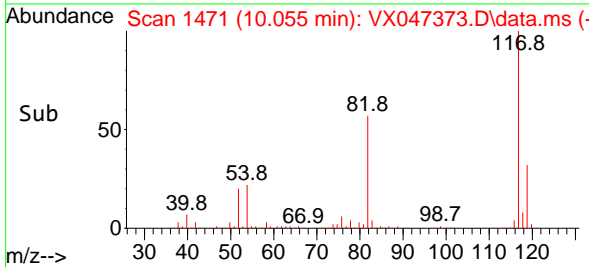
Tgt Ion: 95 Resp: 302912
 Ion Ratio Lower Upper
 95 100
 174 73.2 0.0 148.0
 176 69.2 0.0 145.4

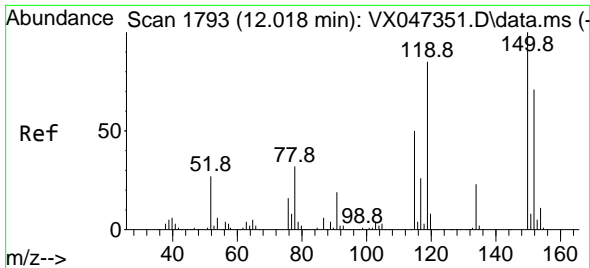


#63
 Chlorobenzene-d5
 Concen: 50.000 ug/l
 RT: 10.055 min Scan# 1471
 Delta R.T. -0.000 min
 Lab File: VX047373.D
 Acq: 18 Aug 2025 11:50



Tgt Ion: 117 Resp: 620229
 Ion Ratio Lower Upper
 117 100
 82 56.7 45.0 67.4
 119 31.6 25.8 38.8



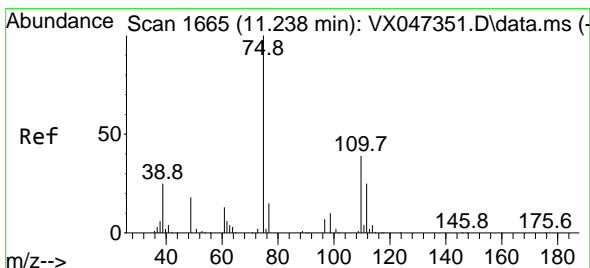
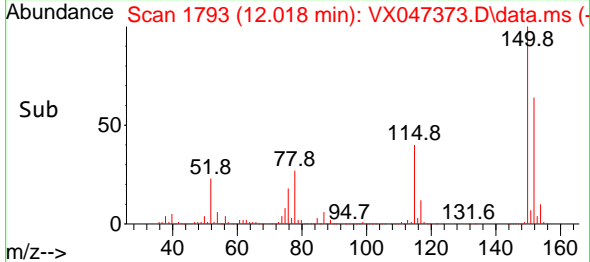
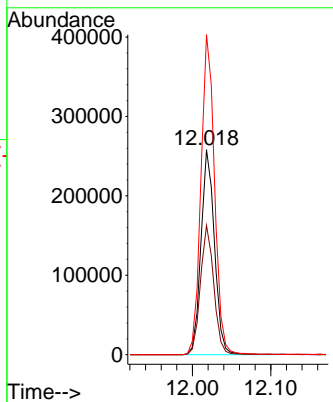
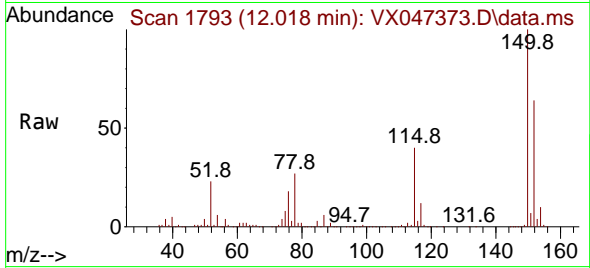


#72
 1,4-Dichlorobenzene-d4
 Concen: 50.000 ug/l
 RT: 12.018 min Scan# 11
 Delta R.T. -0.000 min
 Lab File: VX047373.D
 Acq: 18 Aug 2025 11:50

Instrument :
 MSVOA_X
 ClientSampleId :
 VX0818WBL01

Tgt Ion:152 Resp: 309313

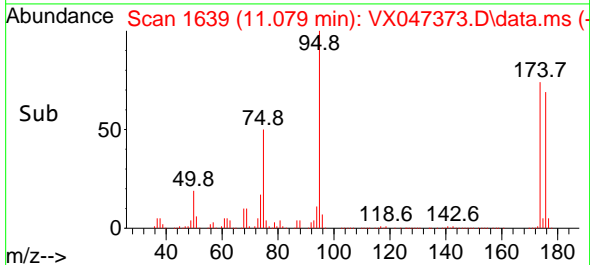
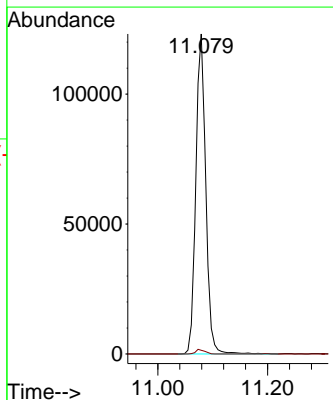
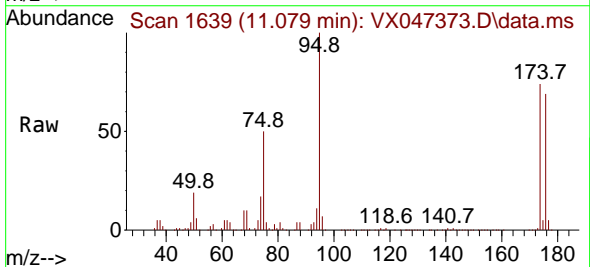
Ion	Ratio	Lower	Upper
152	100		
115	62.8	44.6	133.8
150	157.1	0.0	349.8

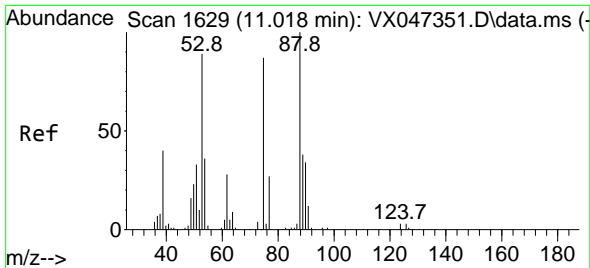


#76
 1,2,3-Trichloropropane
 Concen: 27.472 ug/l
 RT: 11.079 min Scan# 1639
 Delta R.T. -0.159 min
 Lab File: VX047373.D
 Acq: 18 Aug 2025 11:50

Tgt Ion: 75 Resp: 155854

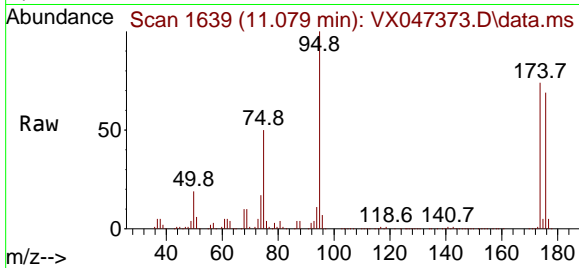
Ion	Ratio	Lower	Upper
75	100		
77	1.3	19.4	58.2#





#81
 trans-1,4-Dichloro-2-butene
 Concen: 108.498 ug/l
 RT: 11.079 min Scan# 1
 Delta R.T. 0.061 min
 Lab File: VX047373.D
 Acq: 18 Aug 2025 11:50

Instrument :
 MSVOA_X
 ClientSampleId :
 VX0818WBL01



Tgt Ion: 75 Resp: 155854
 Ion Ratio Lower Upper
 75 100
 53 0.0 85.2 127.8#
 89 0.0 36.7 55.1#

