

Data Path : Z:\voasrv\HPCHEM1\MSVOA_X\Data\VX081825\
 Data File : VX047376.D
 Acq On : 18 Aug 2025 13:06
 Operator : JC/MD
 Sample : Q2286-02RE
 Misc : 5.0mL/MSVOA_X/WATER
 ALS Vial : 7 Sample Multiplier: 1

Instrument :
 MSVOA_X
 ClientSampleId :
 BP-TT182D-GW-20250814

Quant Time: Aug 19 01:41:10 2025
 Quant Method : Z:\voasrv\HPCHEM1\MSVOA_X\Method\82X081525W.M
 Quant Title : SW846 8260
 QLast Update : Mon Aug 18 04:18:28 2025
 Response via : Initial Calibration

Compound	R.T.	QIon	Response	Conc	Units	Dev(Min)

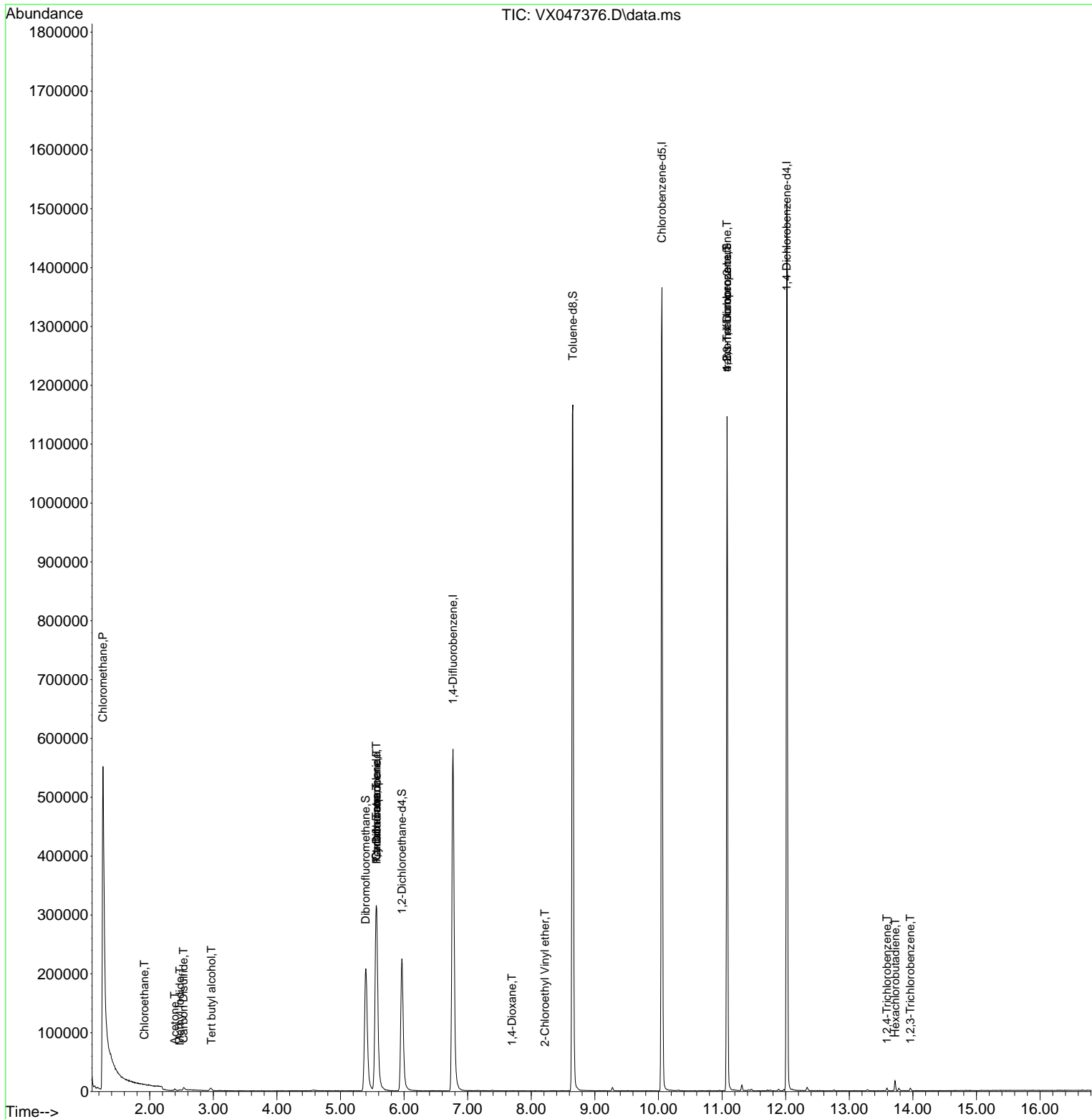
Internal Standards						
1) Pentafluorobenzene	5.568	168	318653	50.000	ug/l	0.00
34) 1,4-Difluorobenzene	6.769	114	625670	50.000	ug/l	0.00
63) Chlorobenzene-d5	10.055	117	611655	50.000	ug/l	0.00
72) 1,4-Dichlorobenzene-d4	12.018	152	302397	50.000	ug/l	0.00
System Monitoring Compounds						
33) 1,2-Dichloroethane-d4	5.964	65	236218	52.968	ug/l	0.00
Spiked Amount	50.000	Range 78 - 117	Recovery	=	105.940%	
35) Dibromofluoromethane	5.397	113	199944	49.239	ug/l	0.00
Spiked Amount	50.000	Range 75 - 124	Recovery	=	98.480%	
50) Toluene-d8	8.653	98	713374	49.151	ug/l	0.00
Spiked Amount	50.000	Range 92 - 112	Recovery	=	98.300%	
62) 4-Bromofluorobenzene	11.079	95	296765	55.409	ug/l	0.00
Spiked Amount	50.000	Range 83 - 123	Recovery	=	110.820%	
Target Compounds						
						Qvalue
3) Chloromethane	1.264	50	22901	6.267	ug/l #	43
6) Chloroethane	1.916	64	812	0.289	ug/l #	63
10) Methyl Iodide	2.477	142	1940	0.288	ug/l #	81
11) Tert butyl alcohol	2.971	59	2432	6.269	ug/l #	72
16) Acetone	2.392	43	3078	1.836	ug/l #	75
17) Carbon Disulfide	2.532	76	7574	0.626	ug/l	97
31) Cyclohexane	5.562	56	7106	0.990	ug/l #	20
36) 1,1-Dichloropropene	5.568	75	25872	4.036	ug/l #	51
38) Carbon Tetrachloride	5.562	117	34231	4.887	ug/l #	15
49) 1,4-Dioxane	7.696	88	171	3.545	ug/l #	50
58) 2-Chloroethyl Vinyl ether	8.214	63	20	8.361	ug/l #	46
76) 1,2,3-Trichloropropane	11.079	75	153426	27.663	ug/l #	39
81) trans-1,4-Dichloro-2-b...	11.079	75	153426	109.196	ug/l #	7
93) 1,2,4-Trichlorobenzene	13.591	180	1429	0.203	ug/l	92
94) Hexachlorobutadiene	13.725	225	2488	0.995	ug/l	96
96) 1,2,3-Trichlorobenzene	13.963	180	1403	0.212	ug/l	97

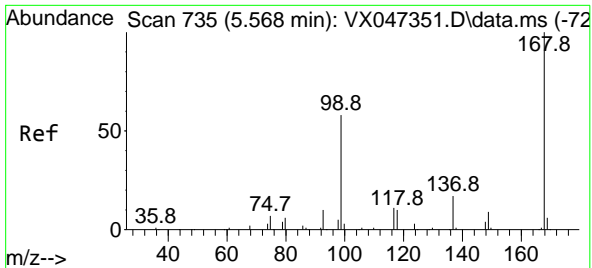
(#) = qualifier out of range (m) = manual integration (+) = signals summed

Data Path : Z:\voasrv\HPCHEM1\MSVOA_X\Data\VX081825\
 Data File : VX047376.D
 Acq On : 18 Aug 2025 13:06
 Operator : JC/MD
 Sample : Q2286-02RE
 Misc : 5.0mL/MSVOA_X/WATER
 ALS Vial : 7 Sample Multiplier: 1

Instrument :
 MSVOA_X
 ClientSampleId :
 BP-TT182D-GW-20250814

Quant Time: Aug 19 01:41:10 2025
 Quant Method : Z:\voasrv\HPCHEM1\MSVOA_X\Method\82X081525W.M
 Quant Title : SW846 8260
 QLast Update : Mon Aug 18 04:18:28 2025
 Response via : Initial Calibration

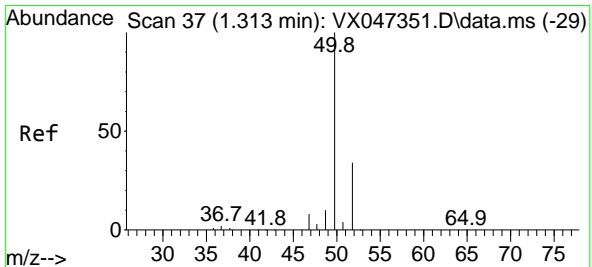
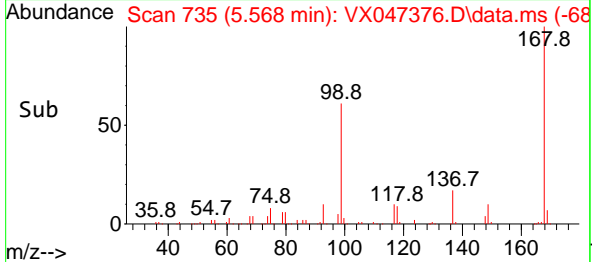
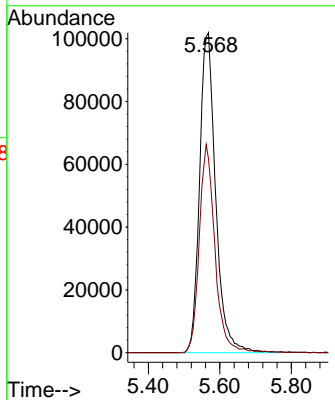
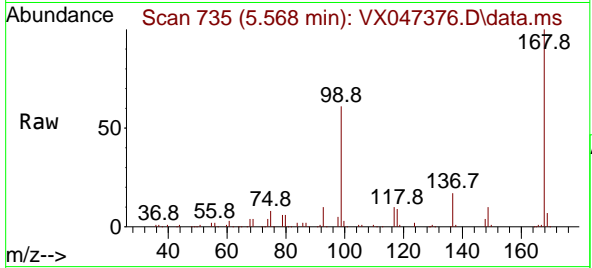




#1
 Pentafluorobenzene
 Concen: 50.000 ug/l
 RT: 5.568 min Scan# 71
 Delta R.T. 0.000 min
 Lab File: VX047376.D
 Acq: 18 Aug 2025 13:06

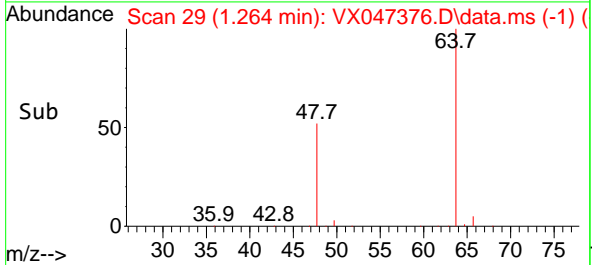
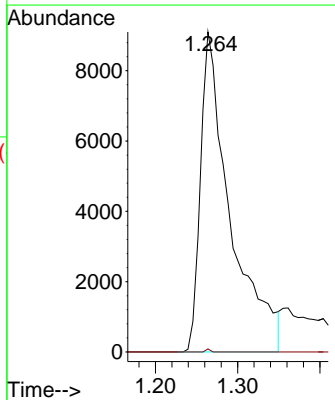
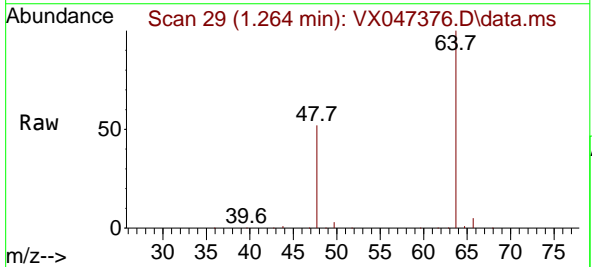
Instrument : MSVOA_X
 ClientSampleId : BP-TT182D-GW-20250814

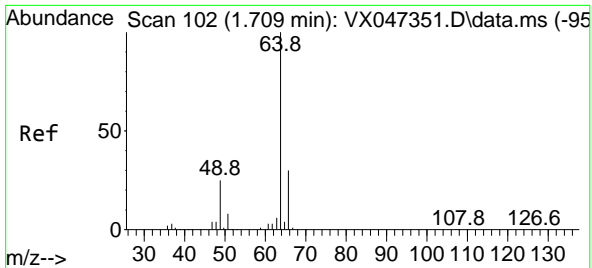
Tgt Ion:168 Resp: 318653
 Ion Ratio Lower Upper
 168 100
 99 60.7 47.9 71.9



#3
 Chloromethane
 Concen: 6.267 ug/l
 RT: 1.264 min Scan# 29
 Delta R.T. -0.049 min
 Lab File: VX047376.D
 Acq: 18 Aug 2025 13:06

Tgt Ion: 50 Resp: 22901
 Ion Ratio Lower Upper
 50 100
 52 0.9 27.0 40.4#

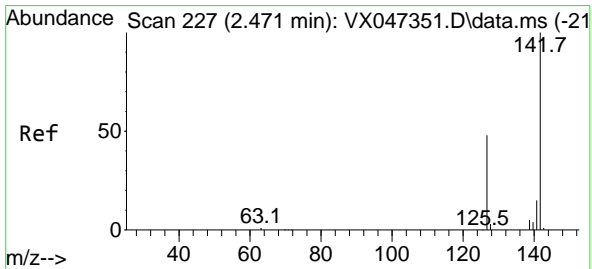
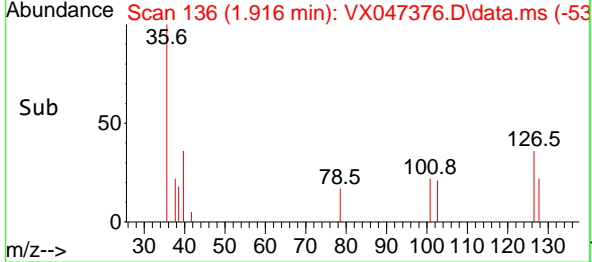
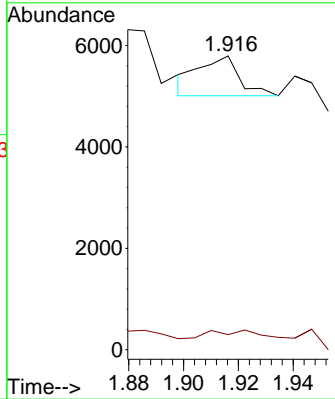
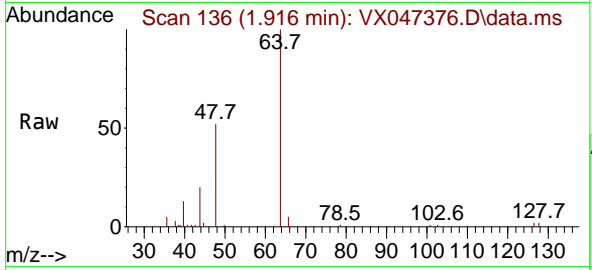




#6
 Chloroethane
 Concen: 0.289 ug/l
 RT: 1.916 min Scan# 11
 Delta R.T. 0.207 min
 Lab File: VX047376.D
 Acq: 18 Aug 2025 13:06

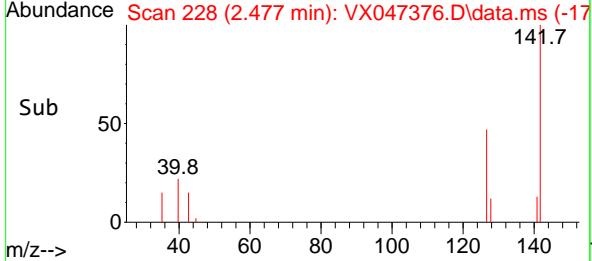
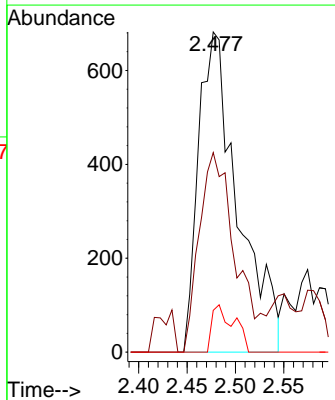
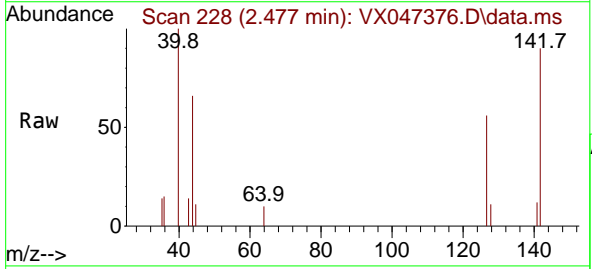
Instrument : MSVOA_X
 ClientSampleId : BP-TT182D-GW-20250814

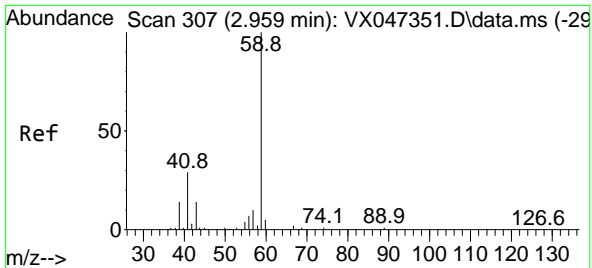
Tgt Ion: 64 Resp: 812
 Ion Ratio Lower Upper
 64 100
 66 10.3 24.4 36.6#



#10
 Methyl Iodide
 Concen: 0.288 ug/l
 RT: 2.477 min Scan# 228
 Delta R.T. 0.006 min
 Lab File: VX047376.D
 Acq: 18 Aug 2025 13:06

Tgt Ion:142 Resp: 1940
 Ion Ratio Lower Upper
 142 100
 127 58.2 36.1 54.1#
 141 8.1 11.1 16.7#

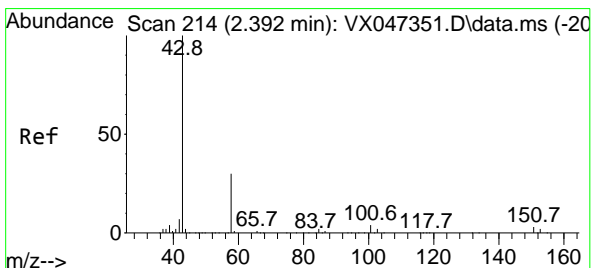
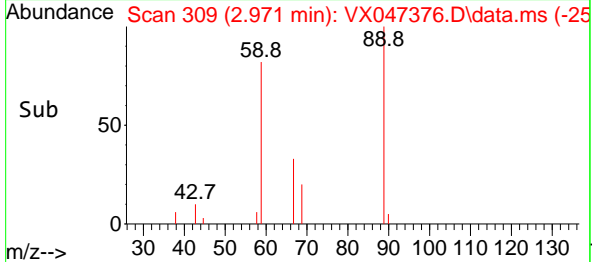
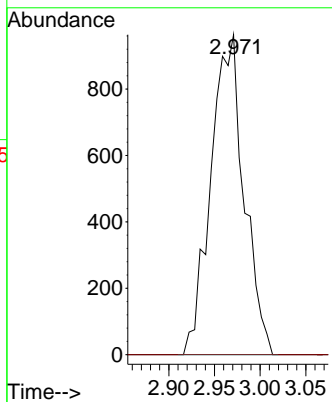
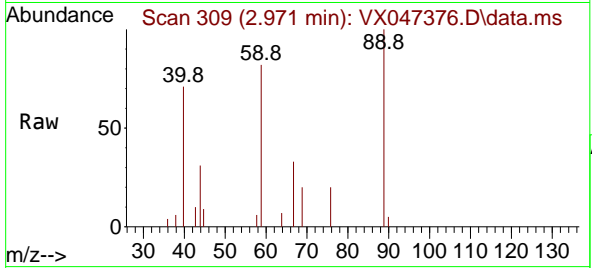




#11
 Tert butyl alcohol
 Concen: 6.269 ug/l
 RT: 2.971 min Scan# 309
 Delta R.T. 0.012 min
 Lab File: VX047376.D
 Acq: 18 Aug 2025 13:06

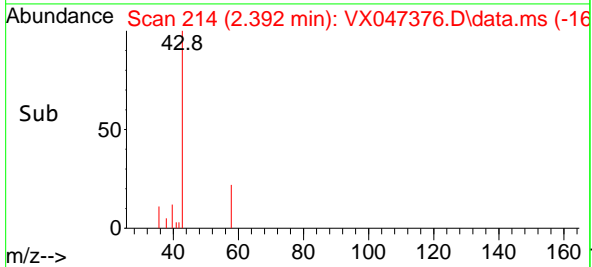
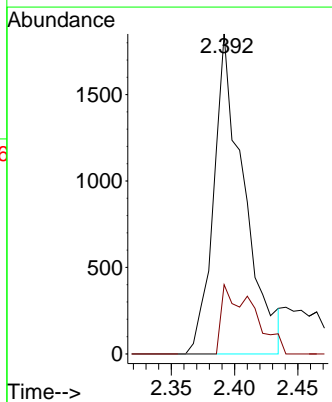
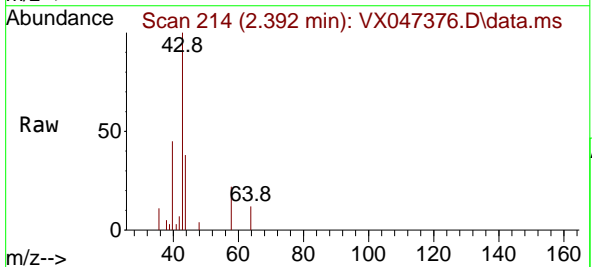
Instrument : MSVOA_X
 ClientSampleId : BP-TT182D-GW-20250814

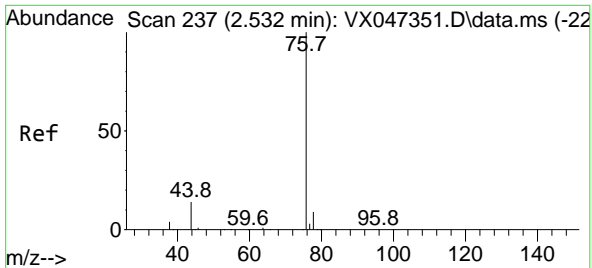
Tgt Ion: 59 Resp: 2432
 Ion Ratio Lower Upper
 59 100
 57 0.0 8.3 12.5#



#16
 Acetone
 Concen: 1.836 ug/l
 RT: 2.392 min Scan# 214
 Delta R.T. 0.000 min
 Lab File: VX047376.D
 Acq: 18 Aug 2025 13:06

Tgt Ion: 43 Resp: 3078
 Ion Ratio Lower Upper
 43 100
 58 17.5 24.8 37.2#

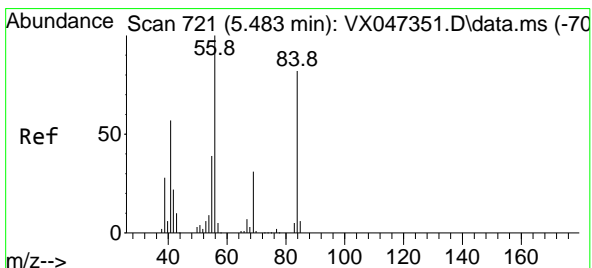
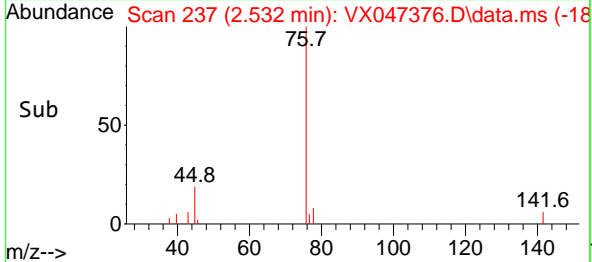
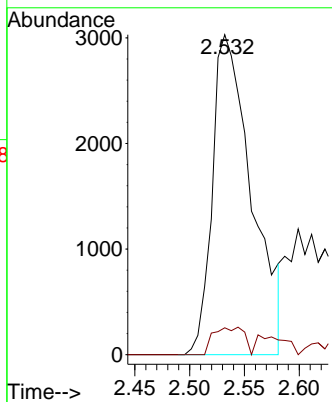
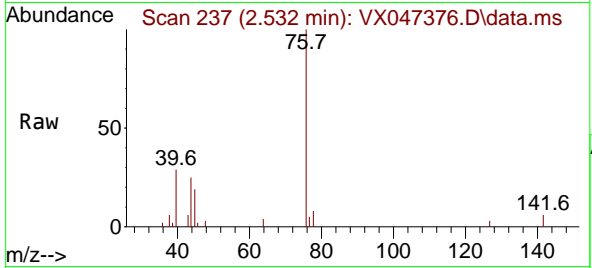




#17
 Carbon Disulfide
 Concen: 0.626 ug/l
 RT: 2.532 min Scan# 21
 Delta R.T. 0.000 min
 Lab File: VX047376.D
 Acq: 18 Aug 2025 13:06

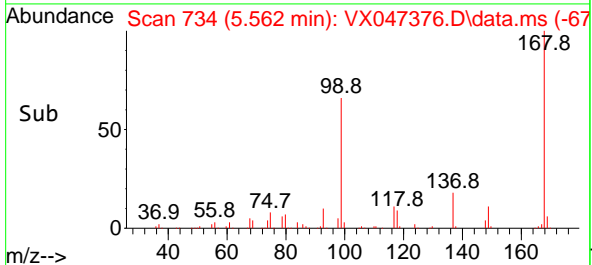
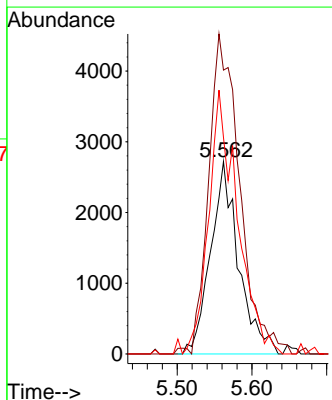
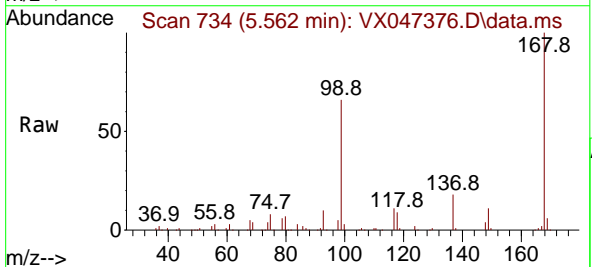
Instrument : MSVOA_X
 ClientSampleId : BP-TT182D-GW-20250814

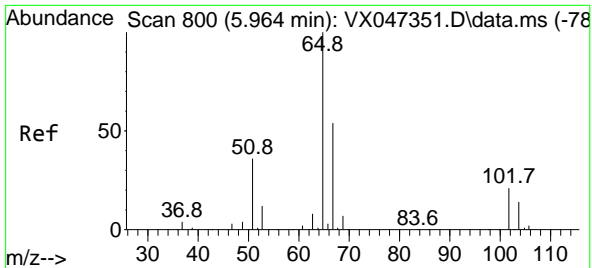
Tgt Ion: 76 Resp: 7574
 Ion Ratio Lower Upper
 76 100
 78 8.0 7.2 10.8



#31
 Cyclohexane
 Concen: 0.990 ug/l
 RT: 5.562 min Scan# 734
 Delta R.T. 0.079 min
 Lab File: VX047376.D
 Acq: 18 Aug 2025 13:06

Tgt Ion: 56 Resp: 7106
 Ion Ratio Lower Upper
 56 100
 69 144.5 24.3 36.5#
 84 110.0 65.3 97.9#

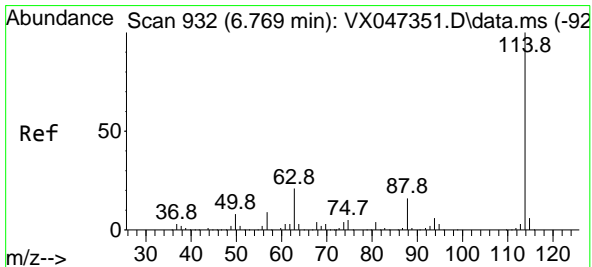
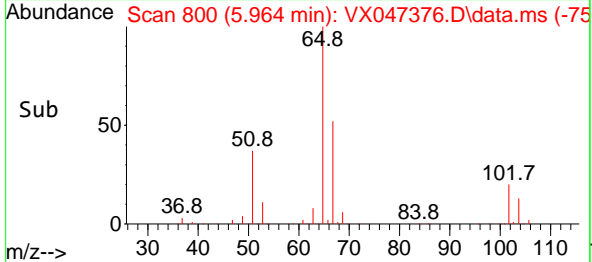
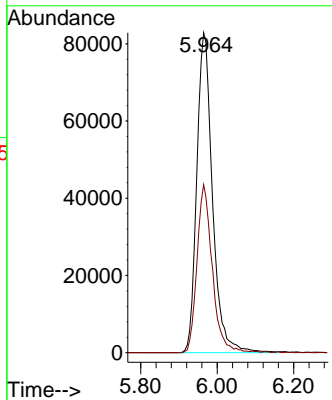
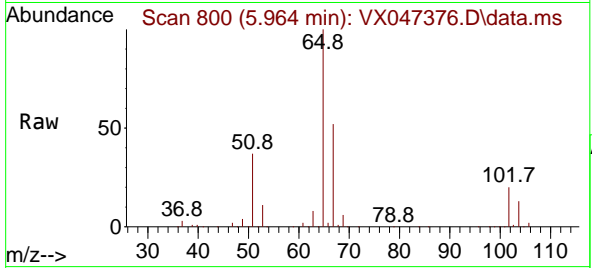




#33
 1,2-Dichloroethane-d4
 Concen: 52.968 ug/l
 RT: 5.964 min Scan# 800
 Delta R.T. 0.000 min
 Lab File: VX047376.D
 Acq: 18 Aug 2025 13:06

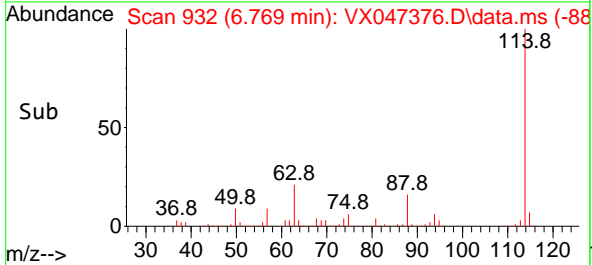
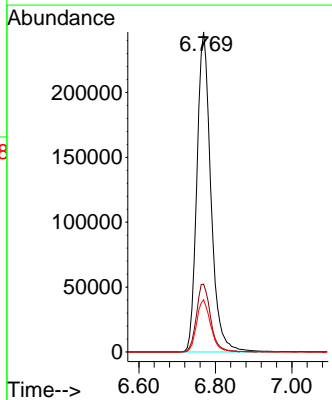
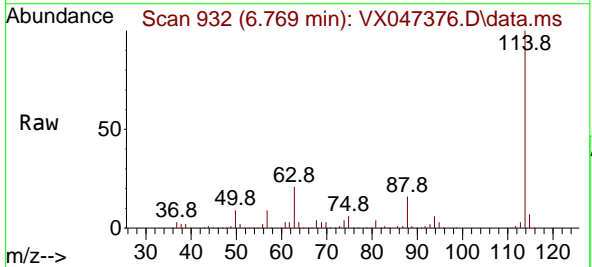
Instrument : MSVOA_X
 ClientSampleId : BP-TT182D-GW-20250814

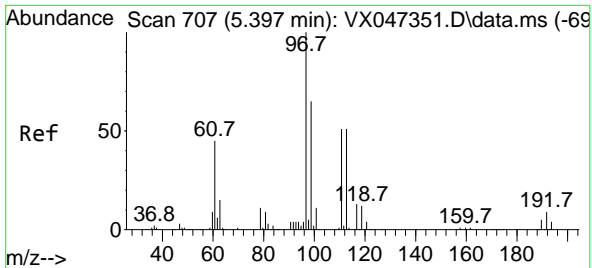
Tgt Ion: 65 Resp: 236218
 Ion Ratio Lower Upper
 65 100
 67 50.9 0.0 106.0



#34
 1,4-Difluorobenzene
 Concen: 50.000 ug/l
 RT: 6.769 min Scan# 932
 Delta R.T. 0.000 min
 Lab File: VX047376.D
 Acq: 18 Aug 2025 13:06

Tgt Ion: 114 Resp: 625670
 Ion Ratio Lower Upper
 114 100
 63 21.2 0.0 42.4
 88 16.3 0.0 33.0



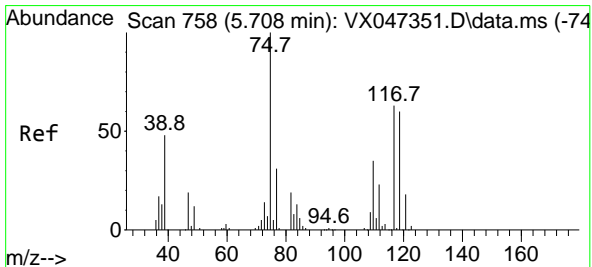
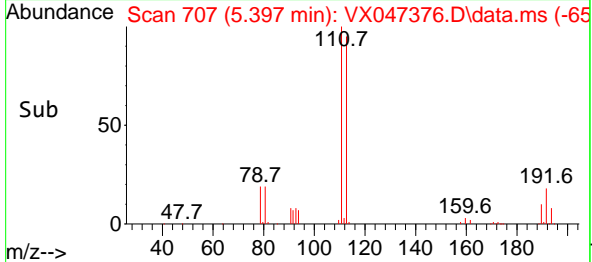
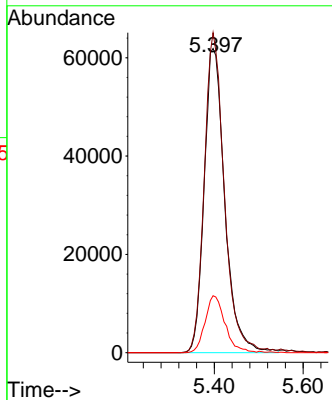
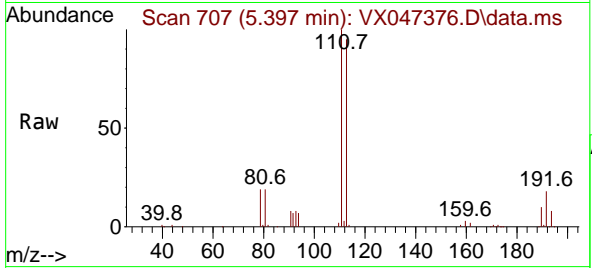


#35
 Dibromofluoromethane
 Concen: 49.239 ug/l
 RT: 5.397 min Scan# 707
 Delta R.T. 0.000 min
 Lab File: VX047376.D
 Acq: 18 Aug 2025 13:06

Instrument : MSVOA_X
 ClientSampleId : BP-TT182D-GW-20250814

Tgt Ion: 113 Resp: 199944

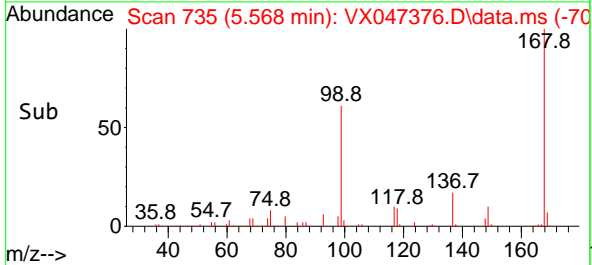
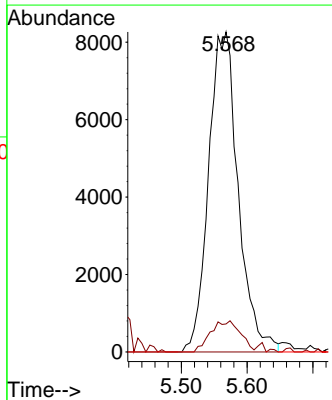
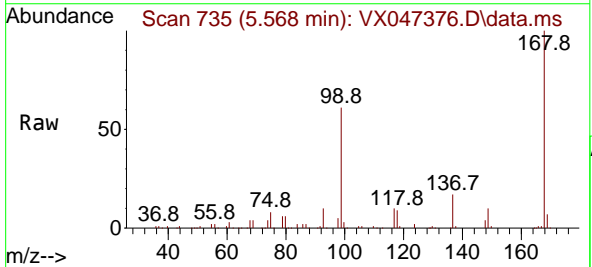
Ion	Ratio	Lower	Upper
113	100		
111	102.3	81.4	122.2
192	18.1	14.1	21.1

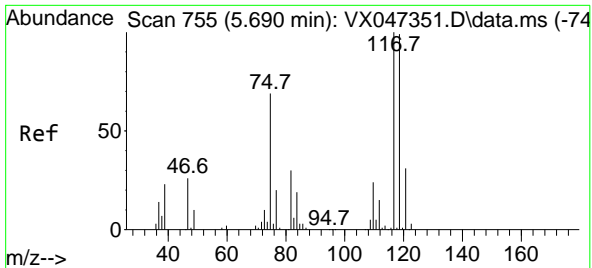


#36
 1,1-Dichloropropene
 Concen: 4.036 ug/l
 RT: 5.568 min Scan# 735
 Delta R.T. -0.140 min
 Lab File: VX047376.D
 Acq: 18 Aug 2025 13:06

Tgt Ion: 75 Resp: 25872

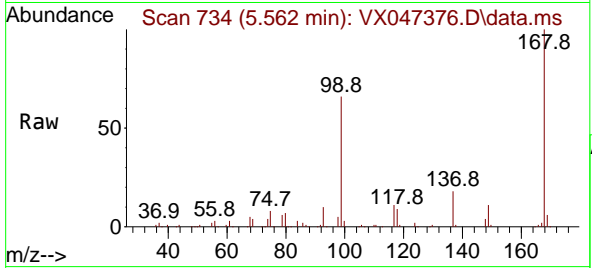
Ion	Ratio	Lower	Upper
75	100		
110	9.8	17.4	52.2#
77	0.0	24.4	36.6#





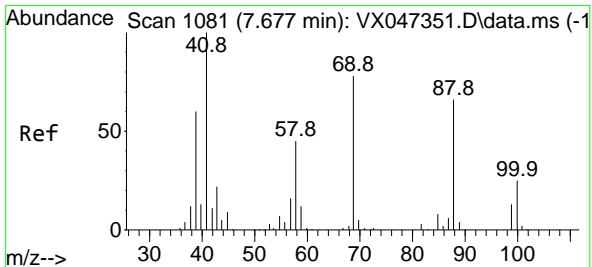
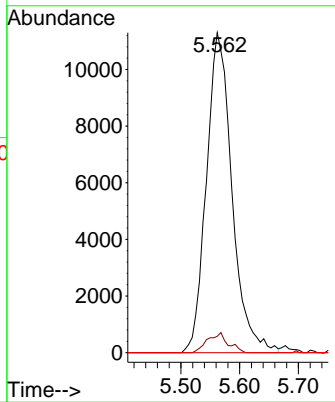
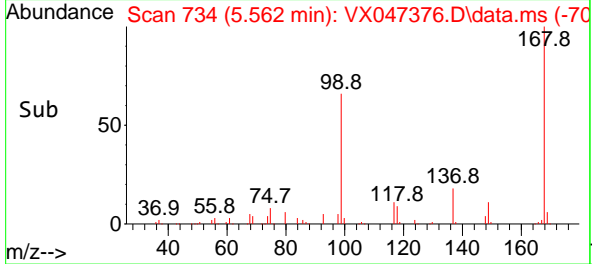
#38
 Carbon Tetrachloride
 Concen: 4.887 ug/l
 RT: 5.562 min Scan# 71
 Delta R.T. -0.128 min
 Lab File: VX047376.D
 Acq: 18 Aug 2025 13:06

Instrument : MSVOA_X
 ClientSampleId : BP-TT182D-GW-20250814

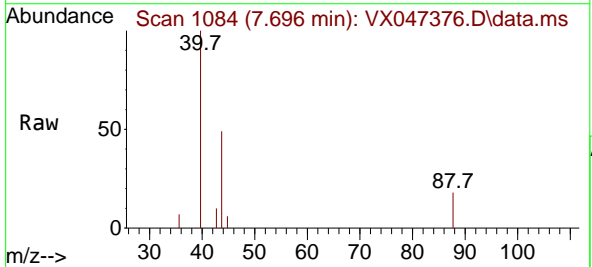


Tgt Ion: 117 Resp: 34231

Ion	Ratio	Lower	Upper
117	100		
119	5.1	78.5	117.7#
121	0.0	24.7	37.1#

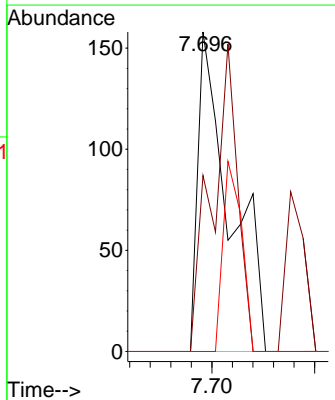
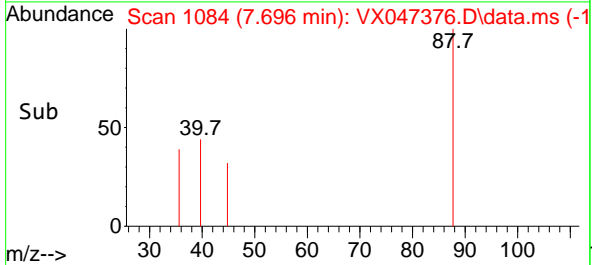


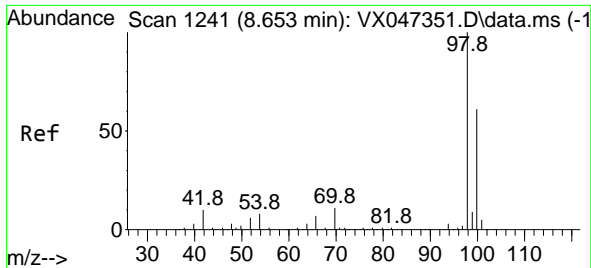
#49
 1,4-Dioxane
 Concen: 3.545 ug/l
 RT: 7.696 min Scan# 1084
 Delta R.T. 0.018 min
 Lab File: VX047376.D
 Acq: 18 Aug 2025 13:06



Tgt Ion: 88 Resp: 171

Ion	Ratio	Lower	Upper
88	100		
43	77.2	32.4	48.6#
58	34.5	56.9	85.3#

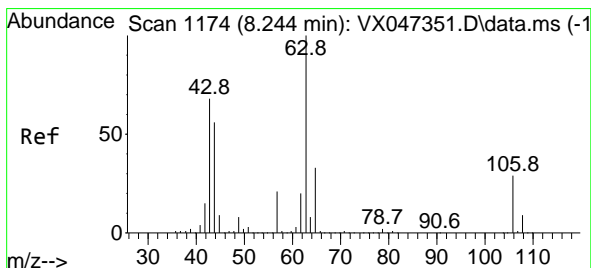
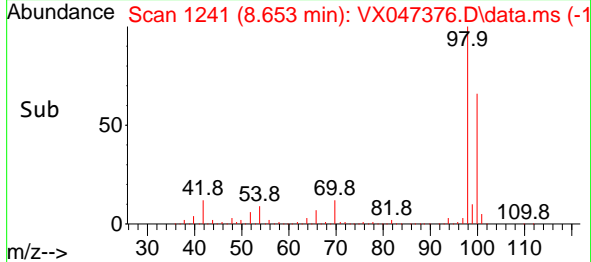
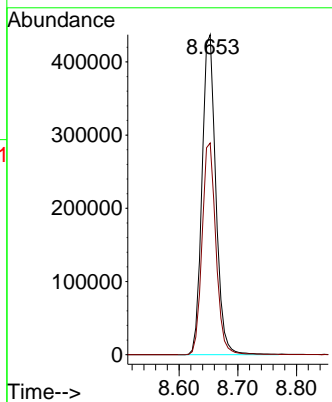
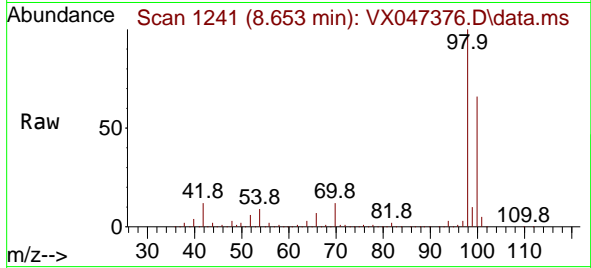




#50
 Toluene-d8
 Concen: 49.151 ug/l
 RT: 8.653 min Scan# 1169
 Delta R.T. 0.000 min
 Lab File: VX047376.D
 Acq: 18 Aug 2025 13:06

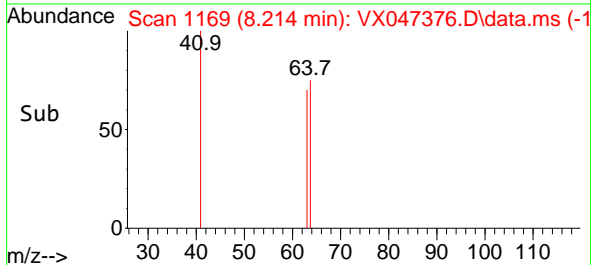
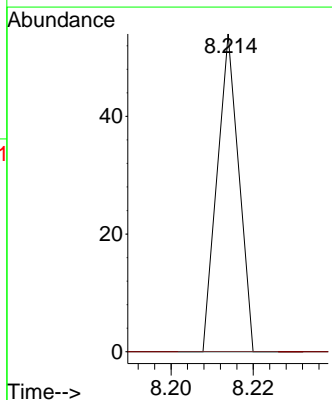
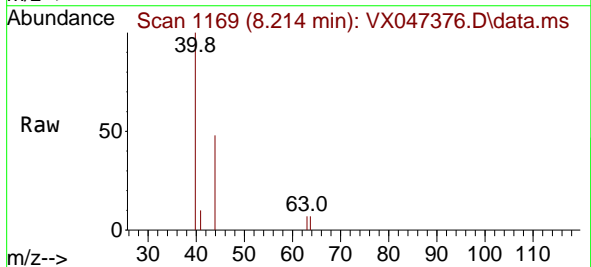
Instrument : MSVOA_X
 ClientSampleId : BP-TT182D-GW-20250814

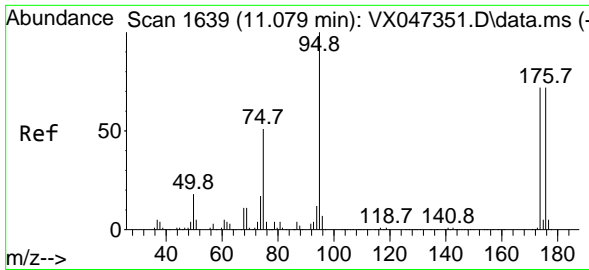
Tgt Ion: 98 Resp: 713374
 Ion Ratio Lower Upper
 98 100
 100 66.3 53.9 80.9



#58
 2-Chloroethyl Vinyl ether
 Concen: 8.361 ug/l
 RT: 8.214 min Scan# 1169
 Delta R.T. -0.030 min
 Lab File: VX047376.D
 Acq: 18 Aug 2025 13:06

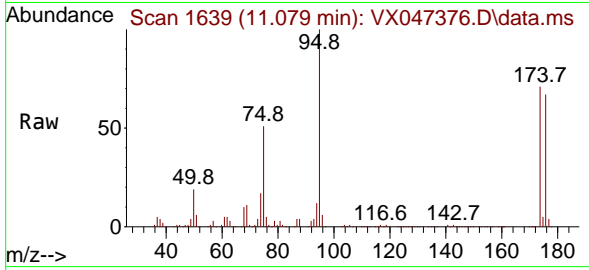
Tgt Ion: 63 Resp: 20
 Ion Ratio Lower Upper
 63 100
 106 0.0 22.8 34.2#



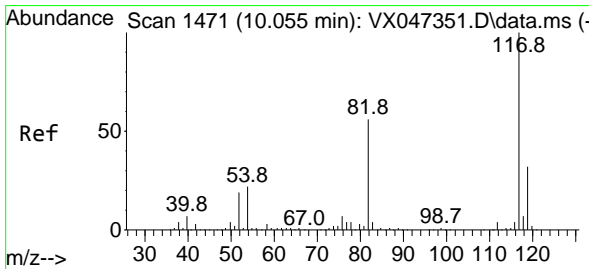
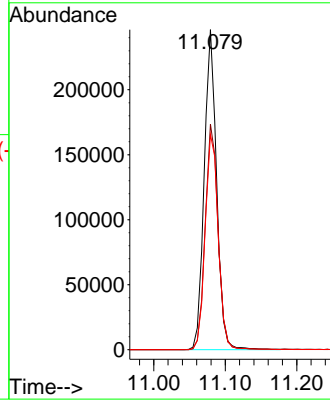
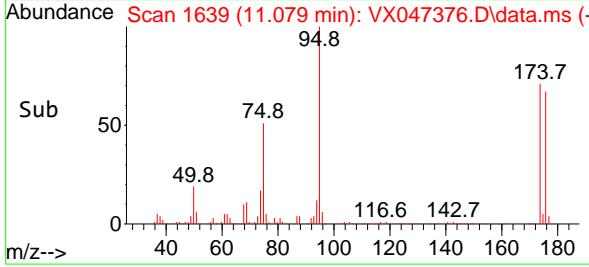


#62
 4-Bromofluorobenzene
 Concen: 55.409 ug/l
 RT: 11.079 min Scan# 1639
 Delta R.T. 0.000 min
 Lab File: VX047376.D
 Acq: 18 Aug 2025 13:06

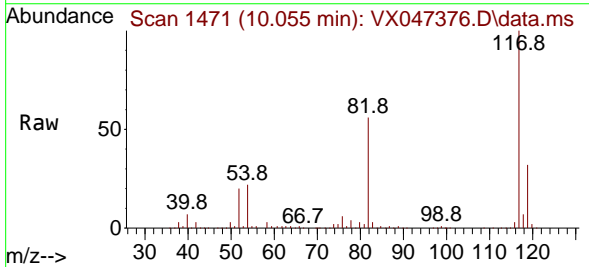
Instrument : MSVOA_X
 ClientSampleId : BP-TT182D-GW-20250814



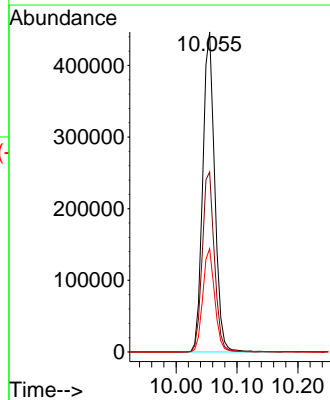
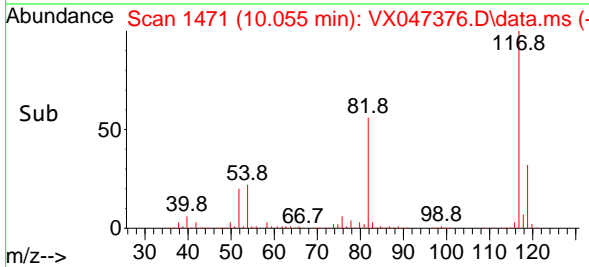
Tgt Ion: 95 Resp: 296765
 Ion Ratio Lower Upper
 95 100
 174 73.4 0.0 148.0
 176 71.3 0.0 145.4

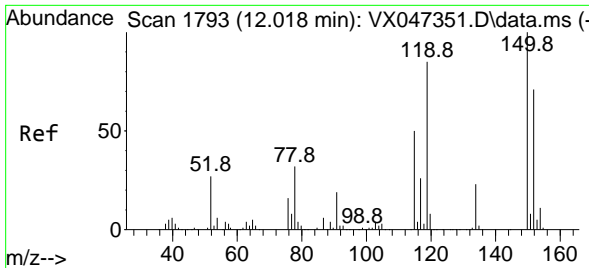


#63
 Chlorobenzene-d5
 Concen: 50.000 ug/l
 RT: 10.055 min Scan# 1471
 Delta R.T. 0.000 min
 Lab File: VX047376.D
 Acq: 18 Aug 2025 13:06



Tgt Ion: 117 Resp: 611655
 Ion Ratio Lower Upper
 117 100
 82 56.3 45.0 67.4
 119 32.3 25.8 38.8

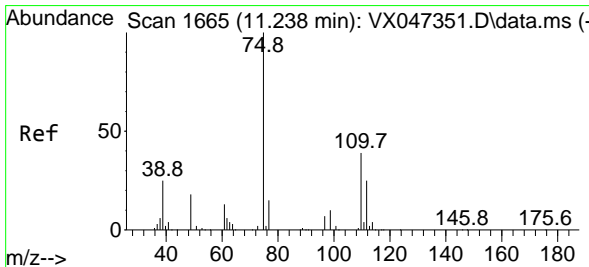
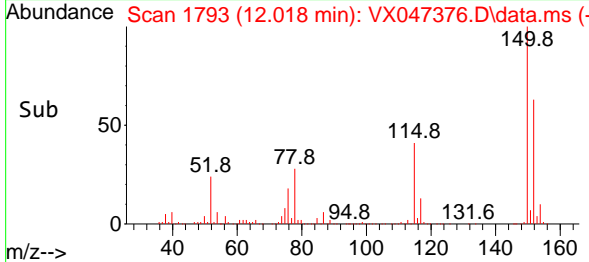
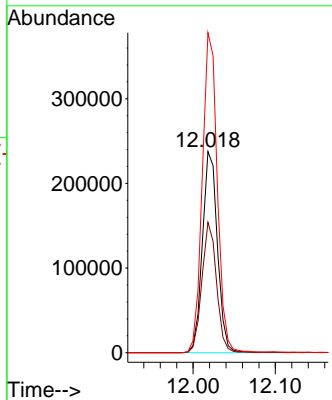
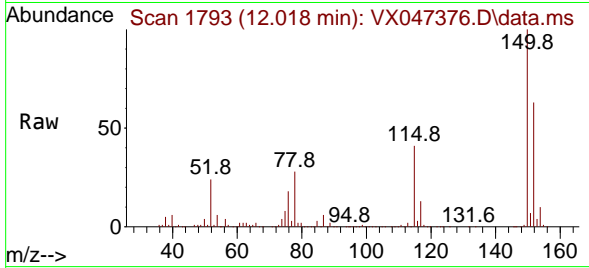




#72
 1,4-Dichlorobenzene-d4
 Concen: 50.000 ug/l
 RT: 12.018 min Scan# 1
 Delta R.T. 0.000 min
 Lab File: VX047376.D
 Acq: 18 Aug 2025 13:06

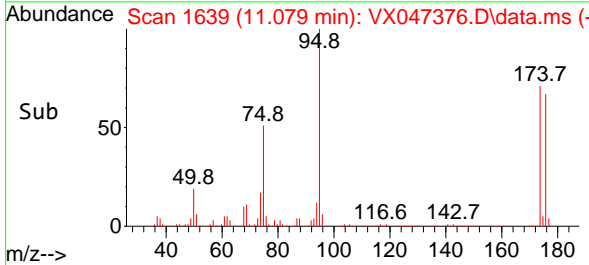
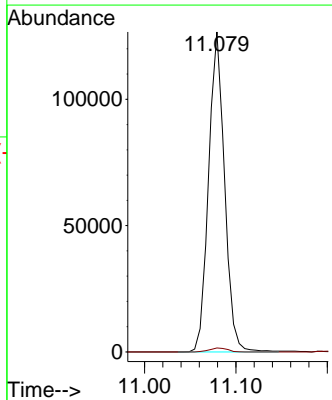
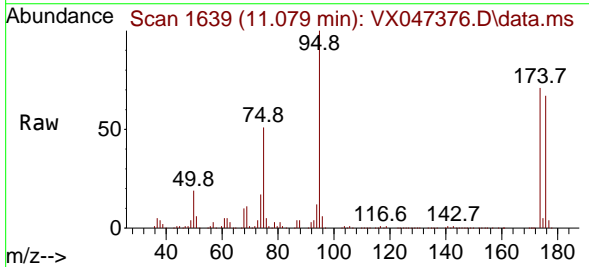
Instrument :
 MSVOA_X
 ClientSampleId :
 BP-TT182D-GW-20250814

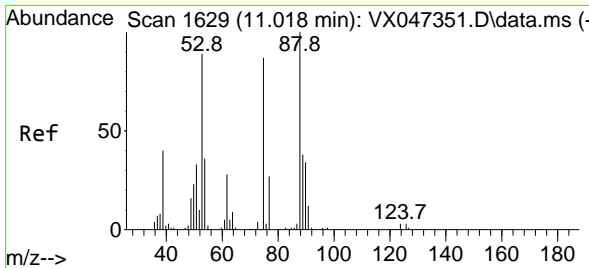
Tgt Ion:152 Resp: 302397
 Ion Ratio Lower Upper
 152 100
 115 63.0 44.6 133.8
 150 158.3 0.0 349.8



#76
 1,2,3-Trichloropropane
 Concen: 27.663 ug/l
 RT: 11.079 min Scan# 1639
 Delta R.T. -0.158 min
 Lab File: VX047376.D
 Acq: 18 Aug 2025 13:06

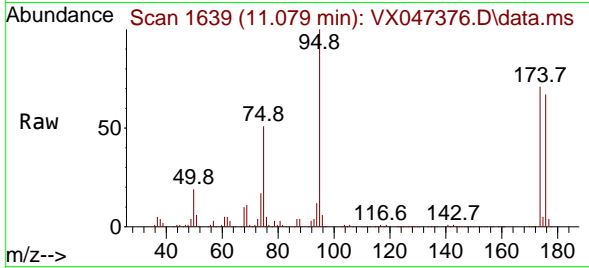
Tgt Ion: 75 Resp: 153426
 Ion Ratio Lower Upper
 75 100
 77 1.4 19.4 58.2#



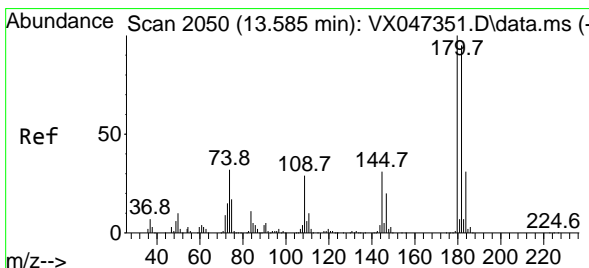
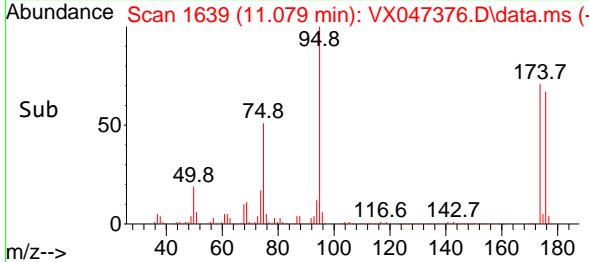
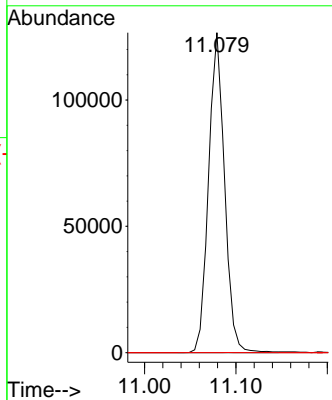


#81
 trans-1,4-Dichloro-2-butene
 Concen: 109.196 ug/l
 RT: 11.079 min Scan# 1
 Delta R.T. 0.061 min
 Lab File: VX047376.D
 Acq: 18 Aug 2025 13:06

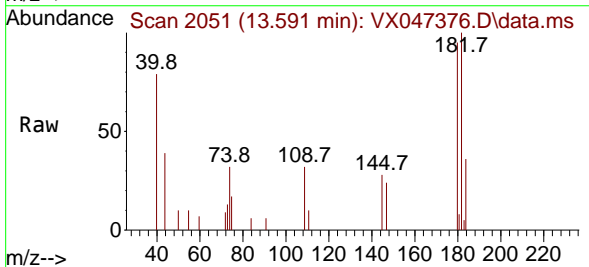
Instrument : MSVOA_X
 ClientSampleId : BP-TT182D-GW-20250814



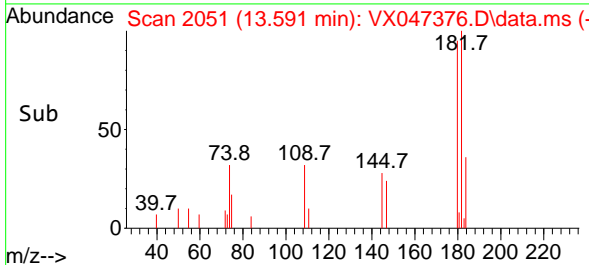
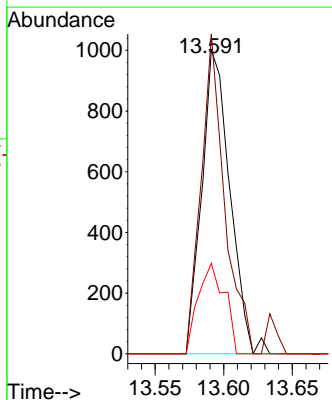
Tgt Ion: 75 Resp: 153426
 Ion Ratio Lower Upper
 75 100
 53 0.0 85.2 127.8#
 89 0.0 36.7 55.1#

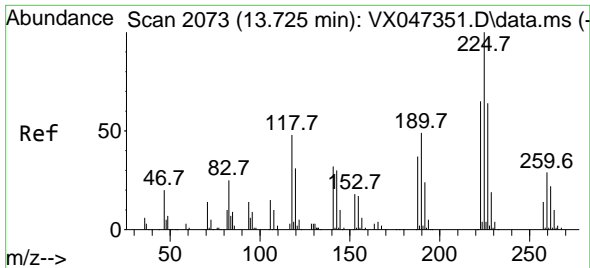


#93
 1,2,4-Trichlorobenzene
 Concen: 0.203 ug/l
 RT: 13.591 min Scan# 2051
 Delta R.T. 0.006 min
 Lab File: VX047376.D
 Acq: 18 Aug 2025 13:06



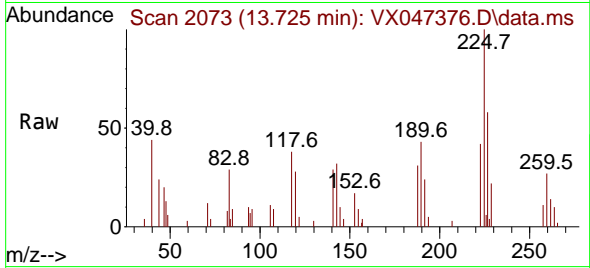
Tgt Ion:180 Resp: 1429
 Ion Ratio Lower Upper
 180 100
 182 88.2 48.1 144.4
 145 27.9 16.2 48.5





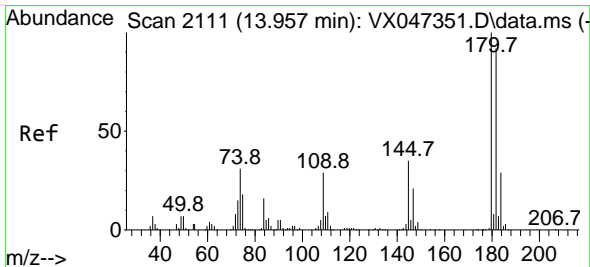
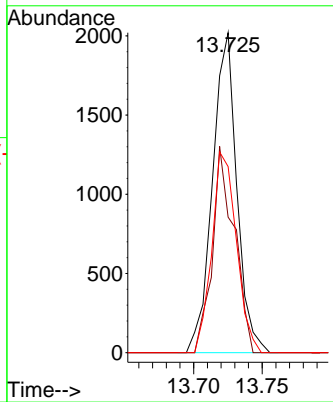
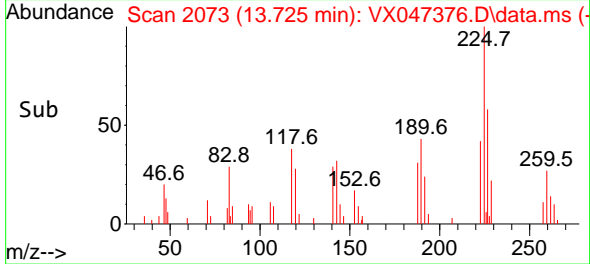
#94
 Hexachlorobutadiene
 Concen: 0.995 ug/l
 RT: 13.725 min Scan# 2073
 Delta R.T. 0.000 min
 Lab File: VX047376.D
 Acq: 18 Aug 2025 13:06

Instrument : MSVOA_X
 ClientSampleId : BP-TT182D-GW-20250814

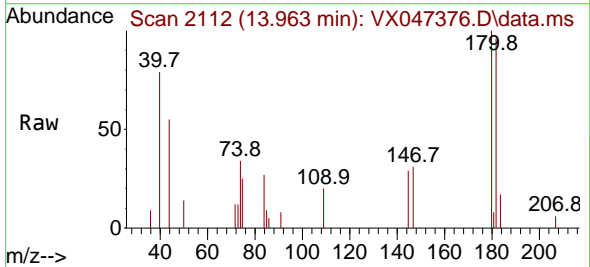


Tgt Ion: 225 Resp: 2488

Ion	Ratio	Lower	Upper
225	100		
223	57.8	32.2	96.6
227	63.3	31.6	95.0



#96
 1,2,3-Trichlorobenzene
 Concen: 0.212 ug/l
 RT: 13.963 min Scan# 2112
 Delta R.T. 0.006 min
 Lab File: VX047376.D
 Acq: 18 Aug 2025 13:06



Tgt Ion: 180 Resp: 1403

Ion	Ratio	Lower	Upper
180	100		
182	99.0	48.0	144.2
145	35.6	17.4	52.2

