

Data Path : Z:\voasrv\HPCHEM1\MSVOA_X\Data\VX081825\
 Data File : VX047377.D
 Acq On : 18 Aug 2025 13:27
 Operator : JC/MD
 Sample : Q2815-01RE
 Misc : 5.0mL/MSVOA_X/WATER
 ALS Vial : 8 Sample Multiplier: 1

Instrument :
 MSVOA_X
 ClientSampleId :
 TW-705R-S

Quant Time: Aug 19 01:41:42 2025
 Quant Method : Z:\voasrv\HPCHEM1\MSVOA_X\Method\82X081525W.M
 Quant Title : SW846 8260
 QLast Update : Mon Aug 18 04:18:28 2025
 Response via : Initial Calibration

Compound	R.T.	QIon	Response	Conc	Units	Dev(Min)

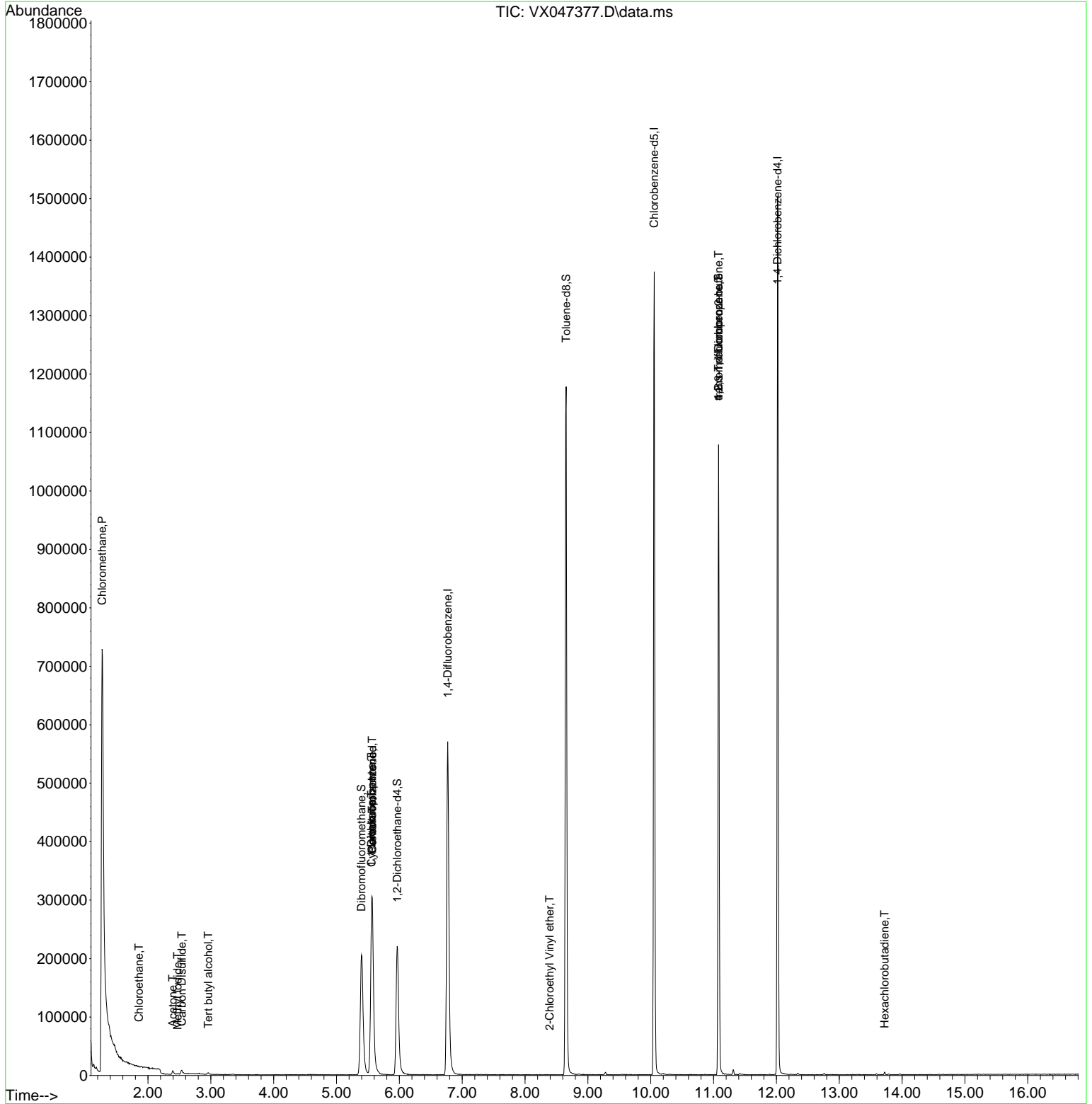
Internal Standards						
1) Pentafluorobenzene	5.568	168	311120	50.000	ug/l	0.00
34) 1,4-Difluorobenzene	6.769	114	608136	50.000	ug/l	0.00
63) Chlorobenzene-d5	10.055	117	595081	50.000	ug/l	0.00
72) 1,4-Dichlorobenzene-d4	12.018	152	295876	50.000	ug/l	0.00
System Monitoring Compounds						
33) 1,2-Dichloroethane-d4	5.964	65	234233	53.794	ug/l	0.00
Spiked Amount	50.000	Range 78 - 117	Recovery	=	107.580%	
35) Dibromofluoromethane	5.397	113	199309	50.498	ug/l	0.00
Spiked Amount	50.000	Range 75 - 124	Recovery	=	101.000%	
50) Toluene-d8	8.653	98	713925	50.607	ug/l	0.00
Spiked Amount	50.000	Range 92 - 112	Recovery	=	101.220%	
62) 4-Bromofluorobenzene	11.079	95	291116	55.921	ug/l	0.00
Spiked Amount	50.000	Range 83 - 123	Recovery	=	111.840%	
Target Compounds						
					Qvalue	
3) Chloromethane	1.270	50	35833	10.043	ug/l #	41
6) Chloroethane	1.855	64	1581	0.577	ug/l #	44
10) Methyl Iodide	2.471	142	1752	0.266	ug/l #	78
11) Tert butyl alcohol	2.959	59	719	1.898	ug/l #	72
16) Acetone	2.392	43	7258	4.435	ug/l	96
17) Carbon Disulfide	2.538	76	12234	1.035	ug/l #	90
31) Cyclohexane	5.556	56	7305	1.042	ug/l #	3
36) 1,1-Dichloropropene	5.556	75	26394	4.236	ug/l #	50
38) Carbon Tetrachloride	5.568	117	33073	4.858	ug/l #	15
58) 2-Chloroethyl Vinyl ether	8.391	63	71	8.378	ug/l #	46
76) 1,2,3-Trichloropropane	11.079	75	149824	27.609	ug/l #	39
81) trans-1,4-Dichloro-2-b...	11.079	75	149824	108.997	ug/l #	7
94) Hexachlorobutadiene	13.719	225	575	0.235	ug/l	88

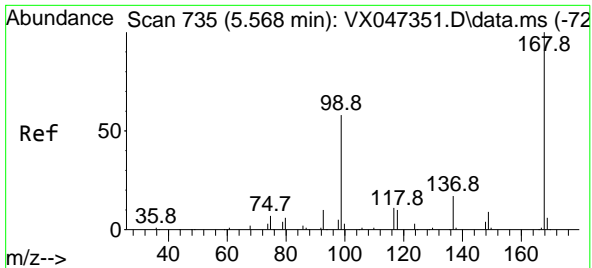
(#) = qualifier out of range (m) = manual integration (+) = signals summed

Data Path : Z:\voasrv\HPCHEM1\MSVOA_X\Data\VX081825\
 Data File : VX047377.D
 Acq On : 18 Aug 2025 13:27
 Operator : JC/MD
 Sample : Q2815-01RE
 Misc : 5.0mL/MSVOA_X/WATER
 ALS Vial : 8 Sample Multiplier: 1

Instrument :
 MSVOA_X
ClientSampleId :
 TW-705R-S

Quant Time: Aug 19 01:41:42 2025
 Quant Method : Z:\voasrv\HPCHEM1\MSVOA_X\Method\82X081525W.M
 Quant Title : SW846 8260
 QLast Update : Mon Aug 18 04:18:28 2025
 Response via : Initial Calibration

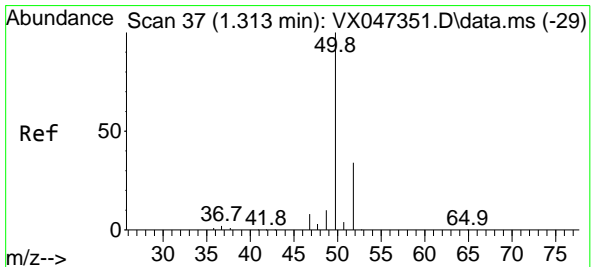
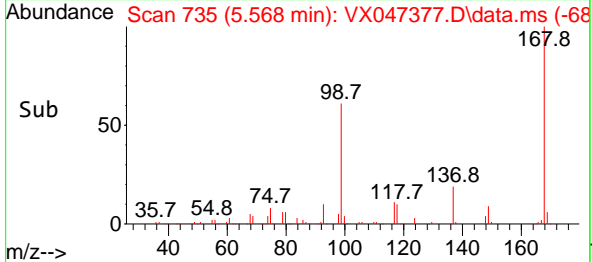
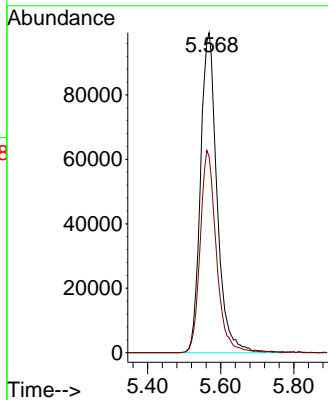
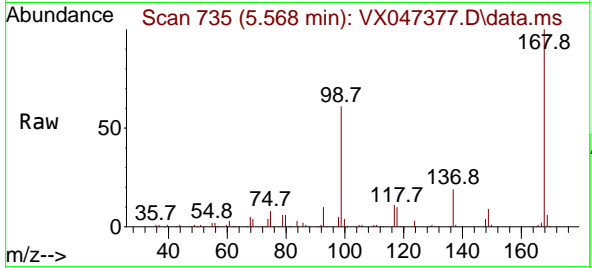




#1
 Pentafluorobenzene
 Concen: 50.000 ug/l
 RT: 5.568 min Scan# 71
 Delta R.T. 0.000 min
 Lab File: VX047377.D
 Acq: 18 Aug 2025 13:27

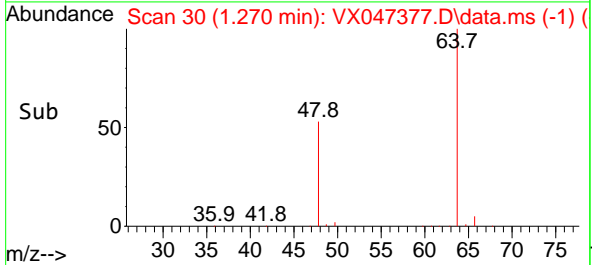
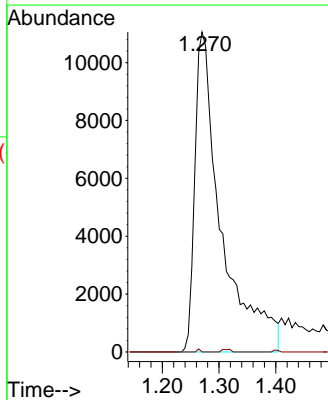
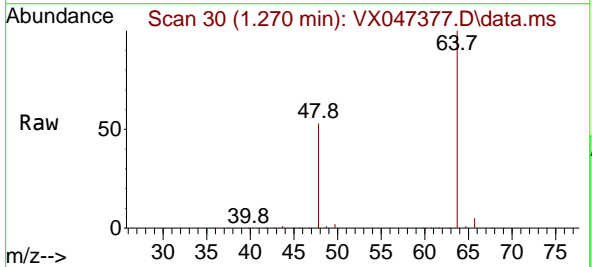
Instrument :
 MSVOA_X
 ClientSampleId :
 TW-705R-S

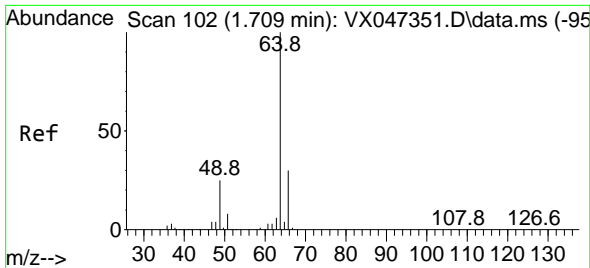
Tgt Ion:168 Resp: 311120
 Ion Ratio Lower Upper
 168 100
 99 61.3 47.9 71.9



#3
 Chloromethane
 Concen: 10.043 ug/l
 RT: 1.270 min Scan# 30
 Delta R.T. -0.042 min
 Lab File: VX047377.D
 Acq: 18 Aug 2025 13:27

Tgt Ion: 50 Resp: 35833
 Ion Ratio Lower Upper
 50 100
 52 0.0 27.0 40.4#

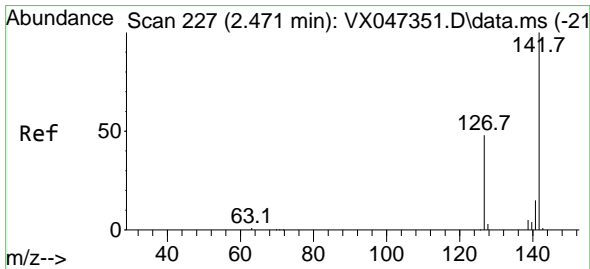
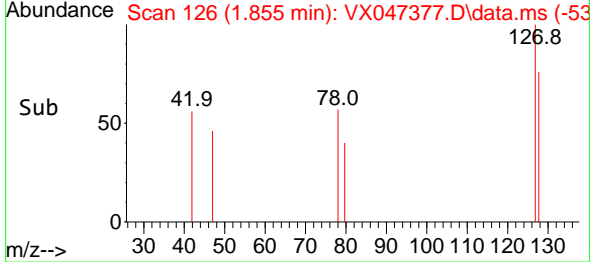
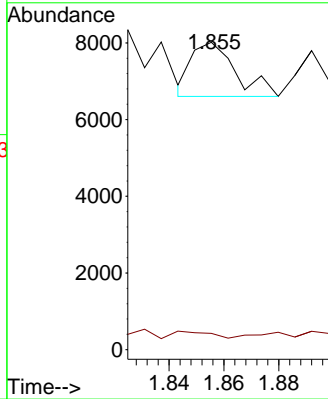
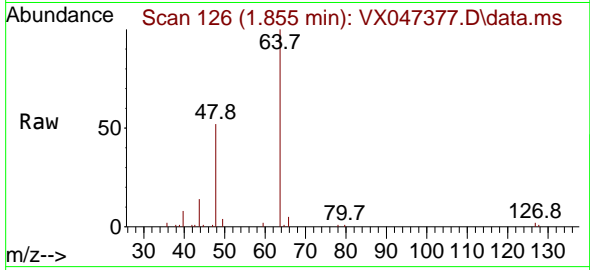




#6
 Chloroethane
 Concen: 0.577 ug/l
 RT: 1.855 min Scan# 11
 Delta R.T. 0.147 min
 Lab File: VX047377.D
 Acq: 18 Aug 2025 13:27

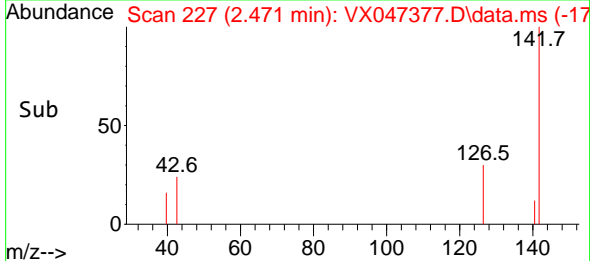
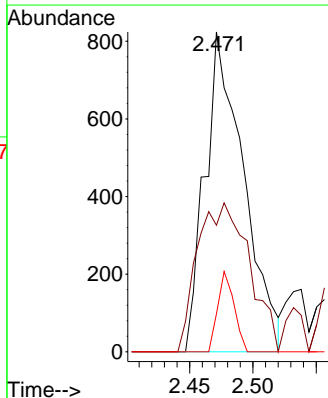
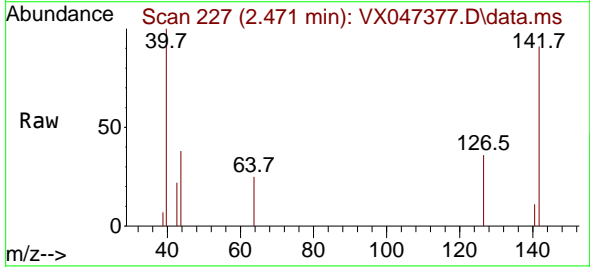
Instrument :
 MSVOA_X
 ClientSampleId :
 TW-705R-S

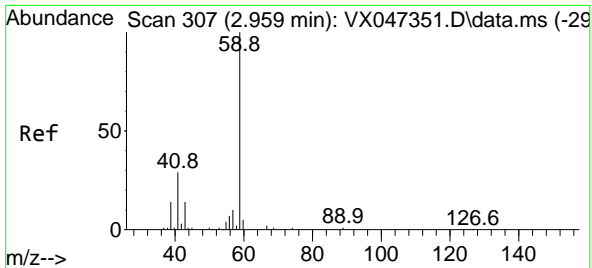
Tgt Ion: 64 Resp: 1581
 Ion Ratio Lower Upper
 64 100
 66 0.0 24.4 36.6#



#10
 Methyl Iodide
 Concen: 0.266 ug/l
 RT: 2.471 min Scan# 227
 Delta R.T. 0.000 min
 Lab File: VX047377.D
 Acq: 18 Aug 2025 13:27

Tgt Ion:142 Resp: 1752
 Ion Ratio Lower Upper
 142 100
 127 62.3 36.1 54.1#
 141 10.6 11.1 16.7#

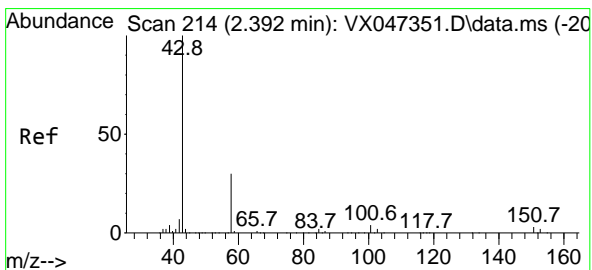
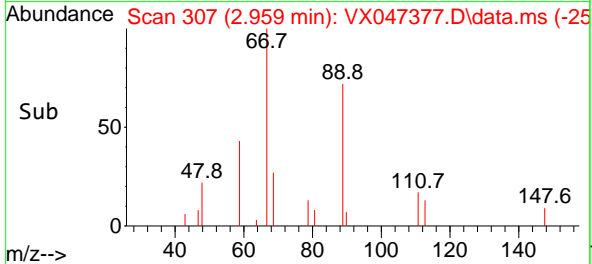
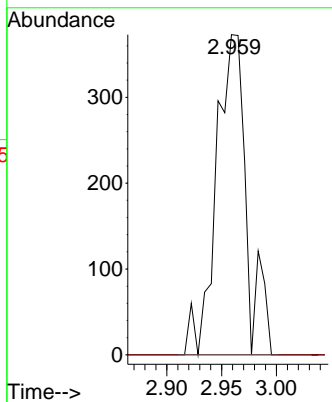
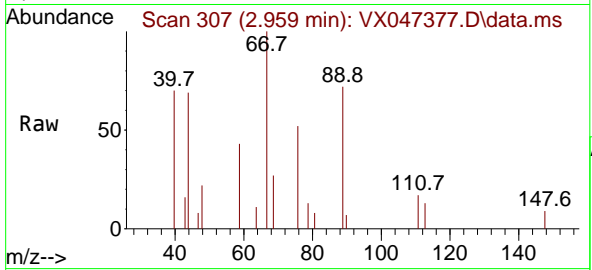




#11
 Tert butyl alcohol
 Concen: 1.898 ug/l
 RT: 2.959 min Scan# 307
 Delta R.T. 0.000 min
 Lab File: VX047377.D
 Acq: 18 Aug 2025 13:27

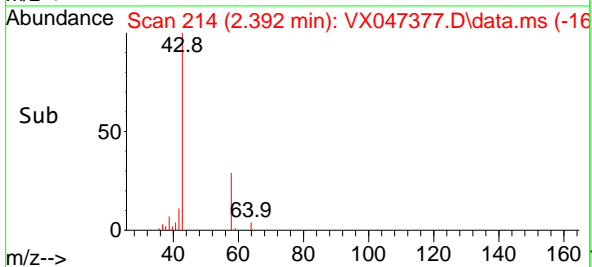
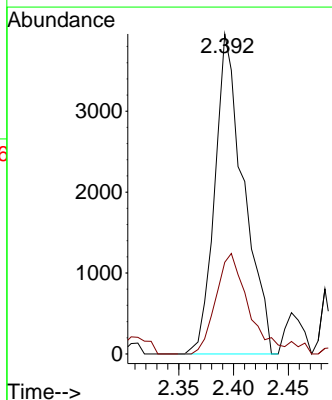
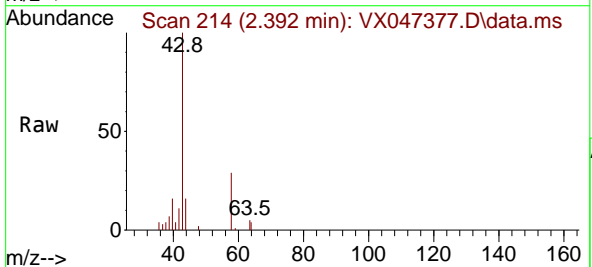
Instrument : MSVOA_X
 ClientSampleId : TW-705R-S

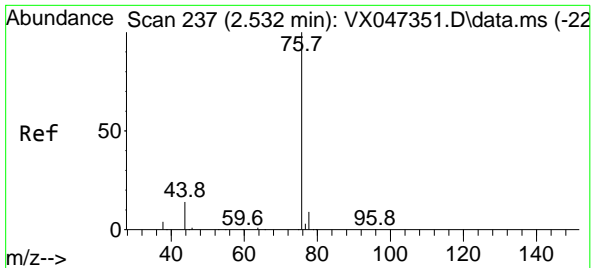
Tgt Ion: 59 Resp: 719
 Ion Ratio Lower Upper
 59 100
 57 0.0 8.3 12.5#



#16
 Acetone
 Concen: 4.435 ug/l
 RT: 2.392 min Scan# 214
 Delta R.T. 0.000 min
 Lab File: VX047377.D
 Acq: 18 Aug 2025 13:27

Tgt Ion: 43 Resp: 7258
 Ion Ratio Lower Upper
 43 100
 58 28.6 24.8 37.2

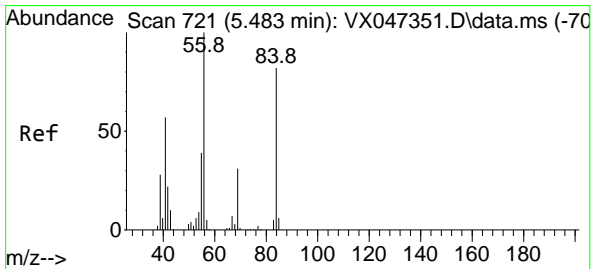
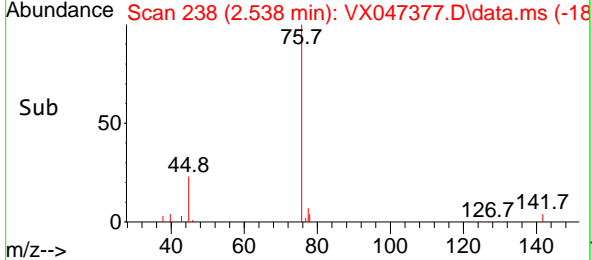
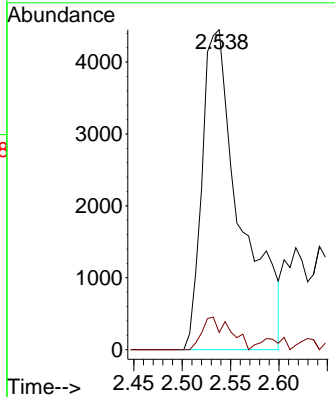
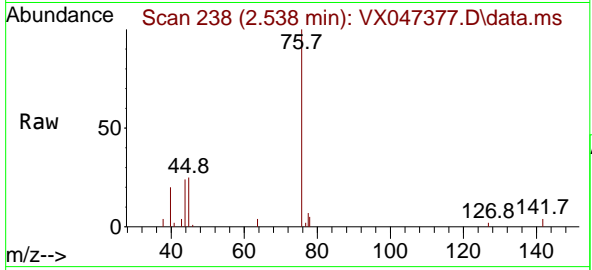




#17
 Carbon Disulfide
 Concen: 1.035 ug/l
 RT: 2.538 min Scan# 21
 Delta R.T. 0.006 min
 Lab File: VX047377.D
 Acq: 18 Aug 2025 13:27

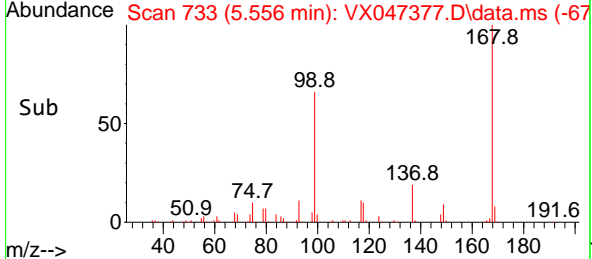
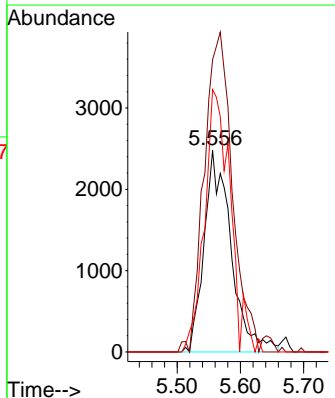
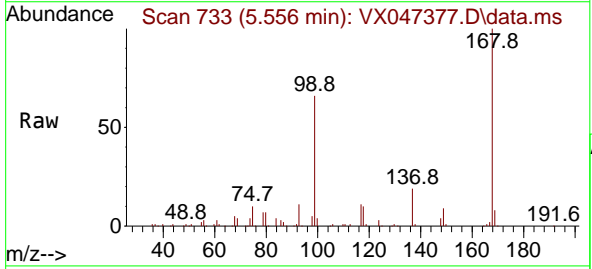
Instrument : MSVOA_X
 Client Sample Id : TW-705R-S

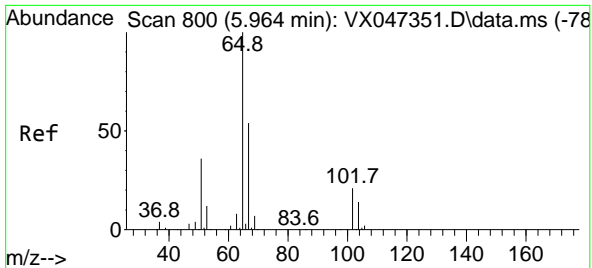
Tgt Ion: 76 Resp: 12234
 Ion Ratio Lower Upper
 76 100
 78 5.4 7.2 10.8#



#31
 Cyclohexane
 Concen: 1.042 ug/l
 RT: 5.556 min Scan# 733
 Delta R.T. 0.073 min
 Lab File: VX047377.D
 Acq: 18 Aug 2025 13:27

Tgt Ion: 56 Resp: 7305
 Ion Ratio Lower Upper
 56 100
 69 145.0 24.3 36.5#
 84 130.1 65.3 97.9#

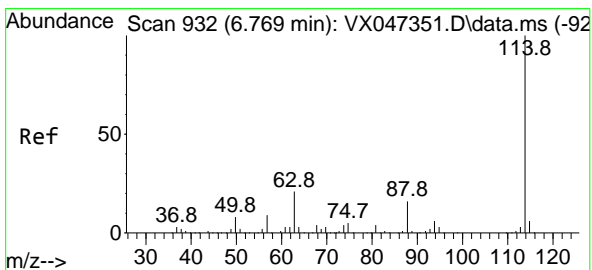
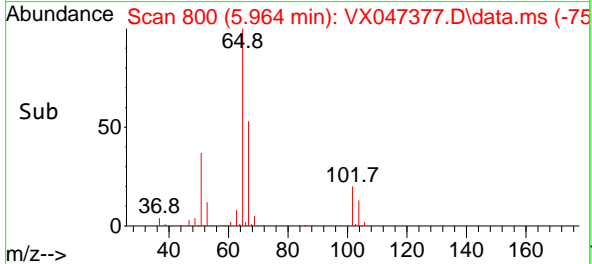
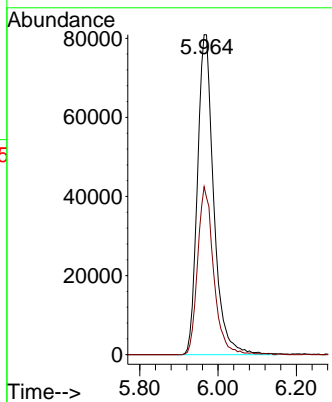
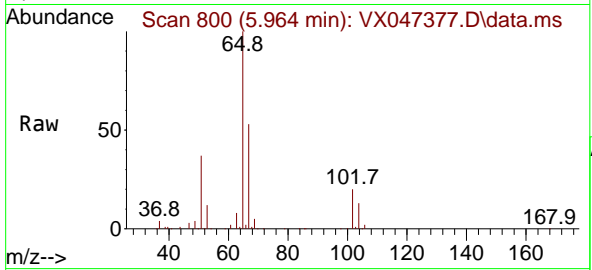




#33
 1,2-Dichloroethane-d4
 Concen: 53.794 ug/l
 RT: 5.964 min Scan# 800
 Delta R.T. 0.000 min
 Lab File: VX047377.D
 Acq: 18 Aug 2025 13:27

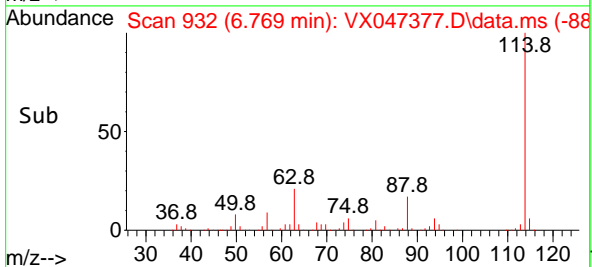
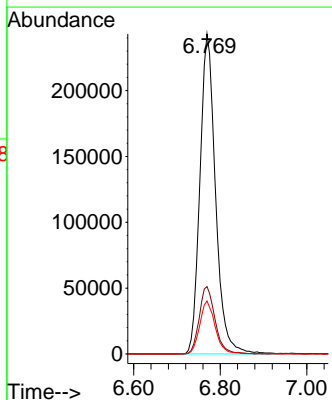
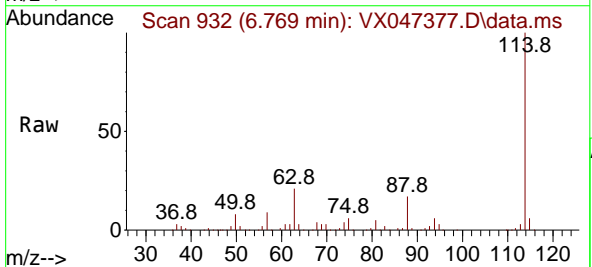
Instrument :
 MSVOA_X
 ClientSampleId :
 TW-705R-S

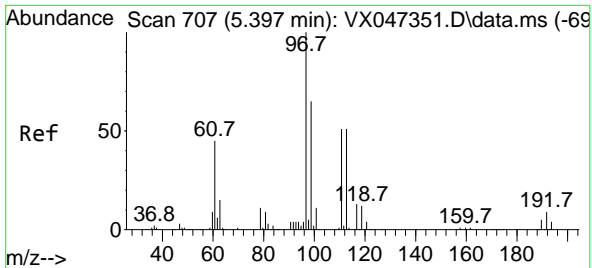
Tgt Ion: 65 Resp: 234233
 Ion Ratio Lower Upper
 65 100
 67 51.5 0.0 106.0



#34
 1,4-Difluorobenzene
 Concen: 50.000 ug/l
 RT: 6.769 min Scan# 932
 Delta R.T. 0.000 min
 Lab File: VX047377.D
 Acq: 18 Aug 2025 13:27

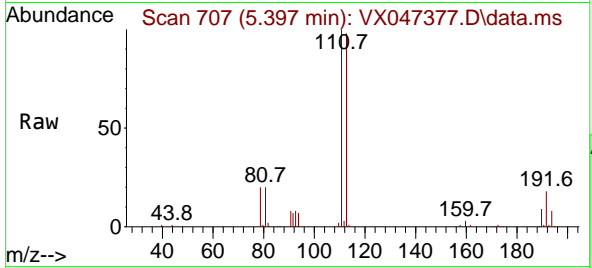
Tgt Ion: 114 Resp: 608136
 Ion Ratio Lower Upper
 114 100
 63 21.1 0.0 42.4
 88 16.5 0.0 33.0



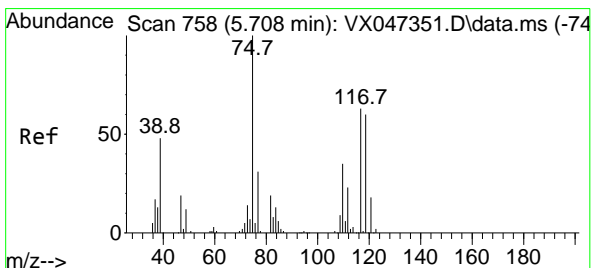
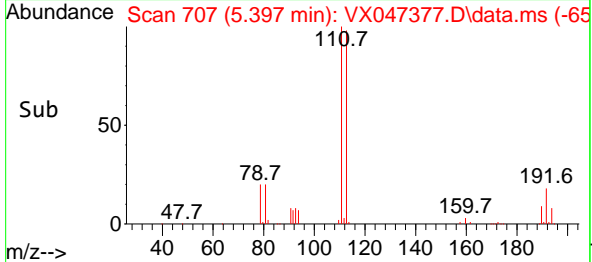
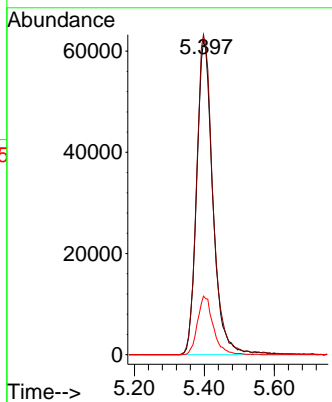


#35
 Dibromofluoromethane
 Concen: 50.498 ug/l
 RT: 5.397 min Scan# 707
 Delta R.T. 0.000 min
 Lab File: VX047377.D
 Acq: 18 Aug 2025 13:27

Instrument : MSVOA_X
 ClientSampleId : TW-705R-S

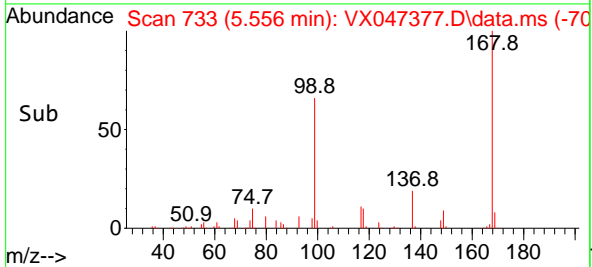
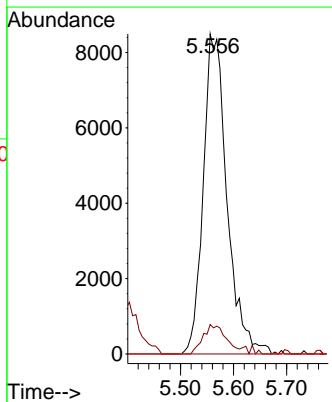
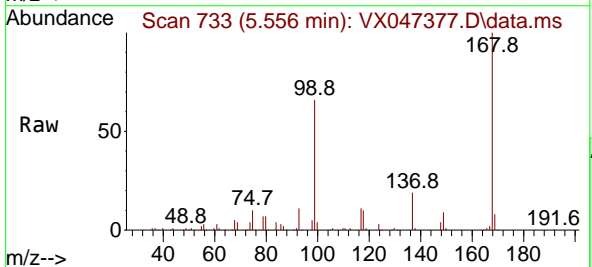


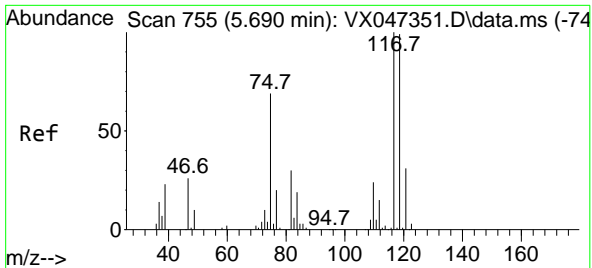
Tgt Ion: 113 Resp: 199309
 Ion Ratio Lower Upper
 113 100
 111 101.8 81.4 122.2
 192 18.0 14.1 21.1



#36
 1,1-Dichloropropene
 Concen: 4.236 ug/l
 RT: 5.556 min Scan# 733
 Delta R.T. -0.152 min
 Lab File: VX047377.D
 Acq: 18 Aug 2025 13:27

Tgt Ion: 75 Resp: 26394
 Ion Ratio Lower Upper
 75 100
 110 9.3 17.4 52.2#
 77 0.0 24.4 36.6#

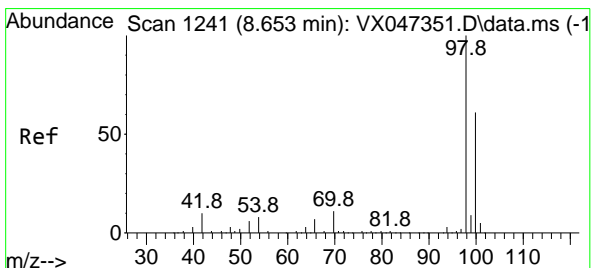
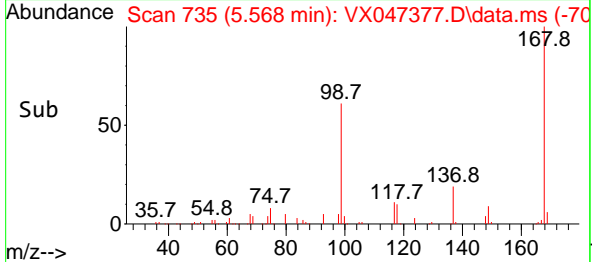
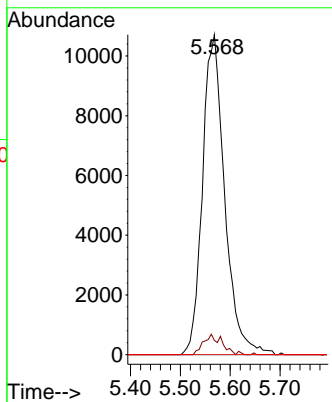
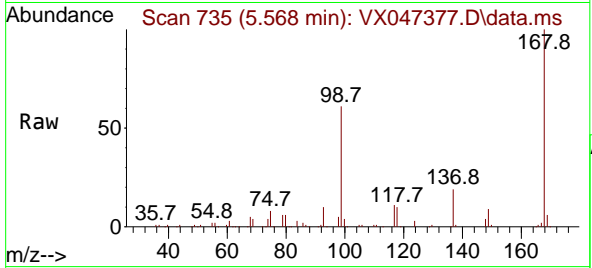




#38
 Carbon Tetrachloride
 Concen: 4.858 ug/l
 RT: 5.568 min Scan# 71
 Delta R.T. -0.122 min
 Lab File: VX047377.D
 Acq: 18 Aug 2025 13:27

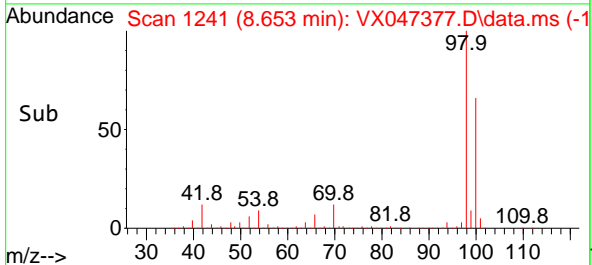
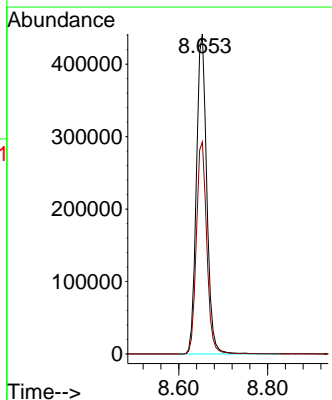
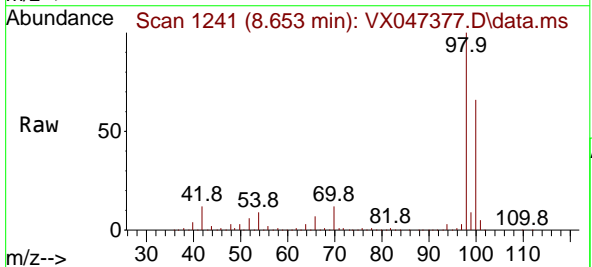
Instrument : MSVOA_X
 ClientSampleId : TW-705R-S

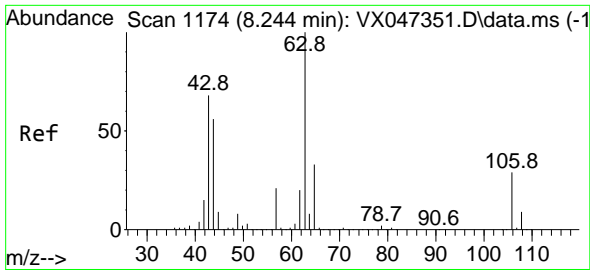
Tgt Ion:117 Resp: 33073
 Ion Ratio Lower Upper
 117 100
 119 4.4 78.5 117.7#
 121 0.0 24.7 37.1#



#50
 Toluene-d8
 Concen: 50.607 ug/l
 RT: 8.653 min Scan# 1241
 Delta R.T. 0.000 min
 Lab File: VX047377.D
 Acq: 18 Aug 2025 13:27

Tgt Ion: 98 Resp: 713925
 Ion Ratio Lower Upper
 98 100
 100 66.2 53.9 80.9

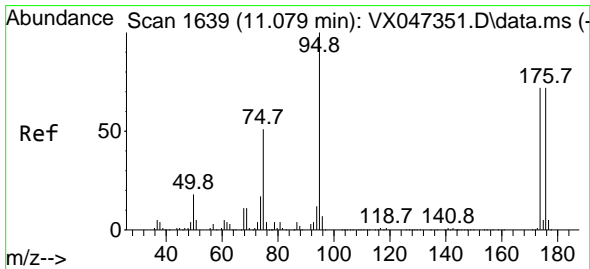
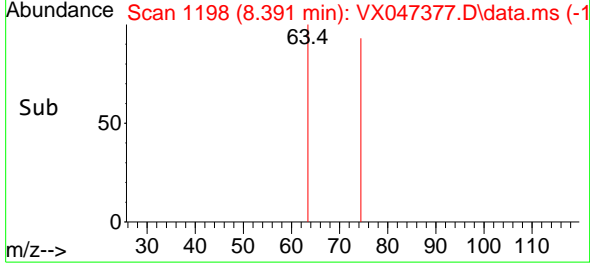
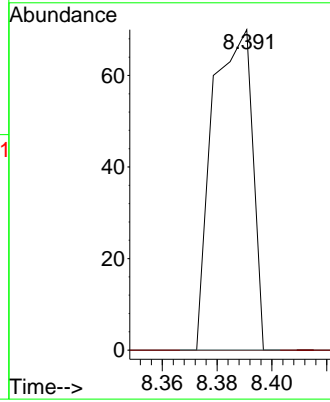
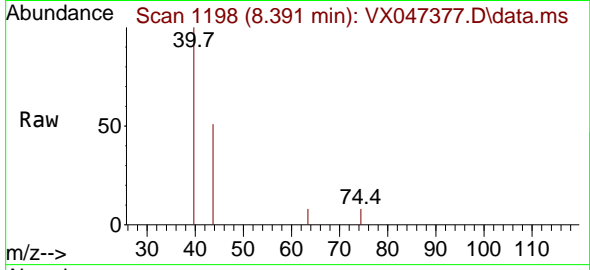




#58
 2-Chloroethyl Vinyl ether
 Concen: 8.378 ug/l
 RT: 8.391 min Scan# 1174
 Delta R.T. 0.147 min
 Lab File: VX047377.D
 Acq: 18 Aug 2025 13:27

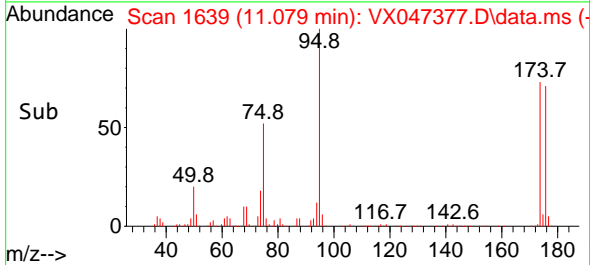
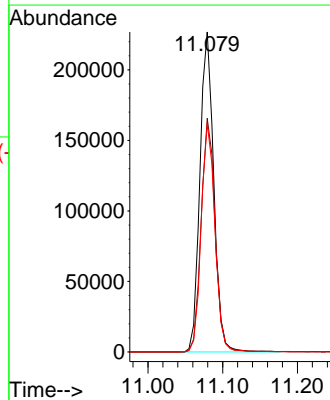
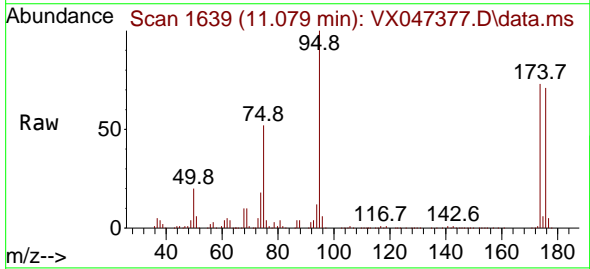
Instrument : MSVOA_X
 ClientSampleId : TW-705R-S

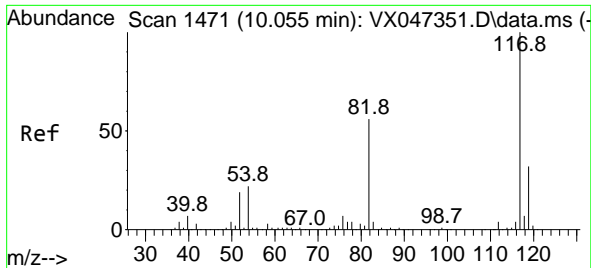
Tgt Ion: 63 Resp: 71
 Ion Ratio Lower Upper
 63 100
 106 0.0 22.8 34.2#



#62
 4-Bromofluorobenzene
 Concen: 55.921 ug/l
 RT: 11.079 min Scan# 1639
 Delta R.T. 0.000 min
 Lab File: VX047377.D
 Acq: 18 Aug 2025 13:27

Tgt Ion: 95 Resp: 291116
 Ion Ratio Lower Upper
 95 100
 174 73.6 0.0 148.0
 176 71.1 0.0 145.4

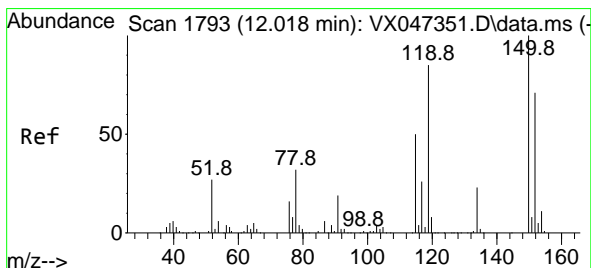
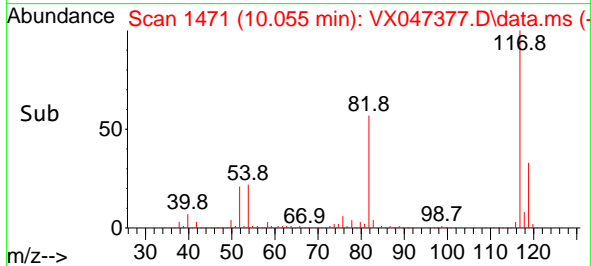
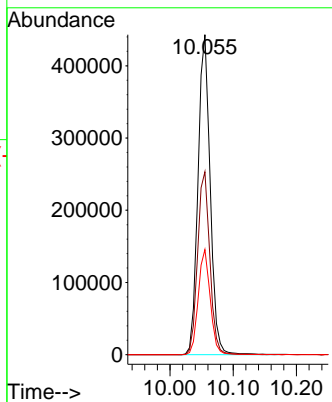
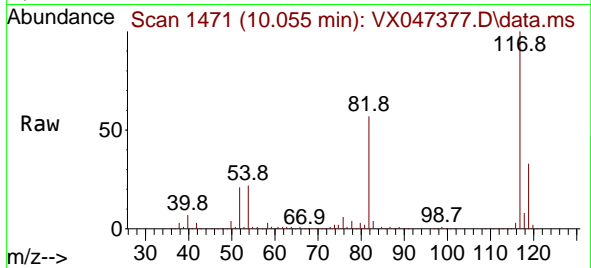




#63
 Chlorobenzene-d5
 Concen: 50.000 ug/l
 RT: 10.055 min Scan# 14
 Delta R.T. 0.000 min
 Lab File: VX047377.D
 Acq: 18 Aug 2025 13:27

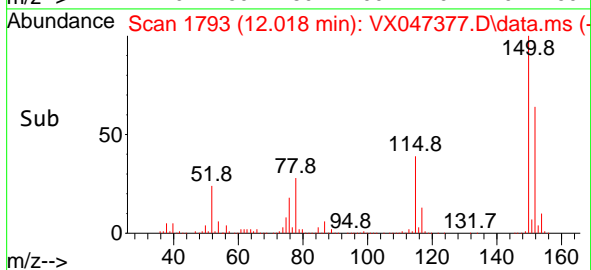
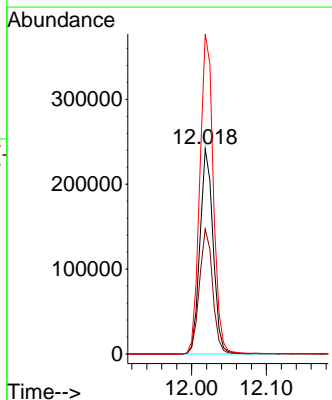
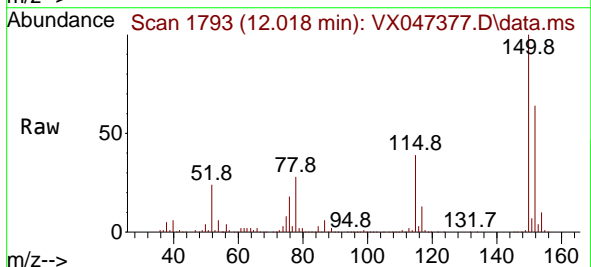
Instrument :
 MSVOA_X
 ClientSampleId :
 TW-705R-S

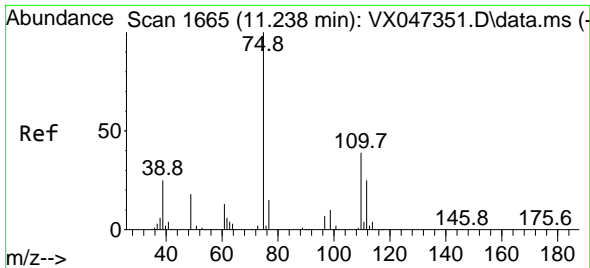
Tgt Ion	Resp	Ion Ratio	Lower	Upper
117	595081	100		
82		57.2	45.0	67.4
119		32.9	25.8	38.8



#72
 1,4-Dichlorobenzene-d4
 Concen: 50.000 ug/l
 RT: 12.018 min Scan# 1793
 Delta R.T. 0.000 min
 Lab File: VX047377.D
 Acq: 18 Aug 2025 13:27

Tgt Ion	Resp	Ion Ratio	Lower	Upper
152	295876	100		
115		61.2	44.6	133.8
150		160.0	0.0	349.8

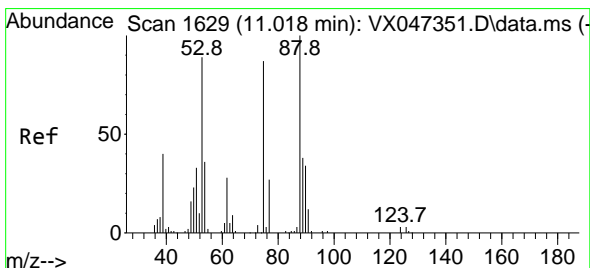
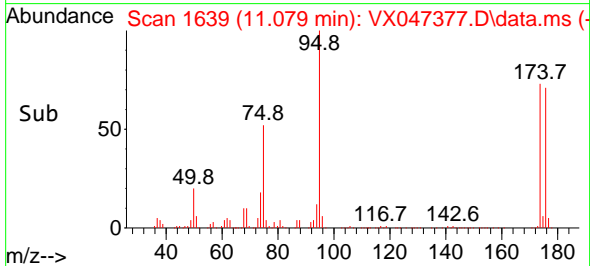
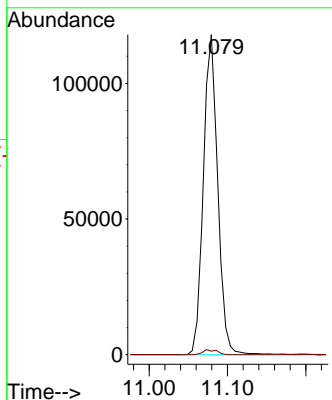
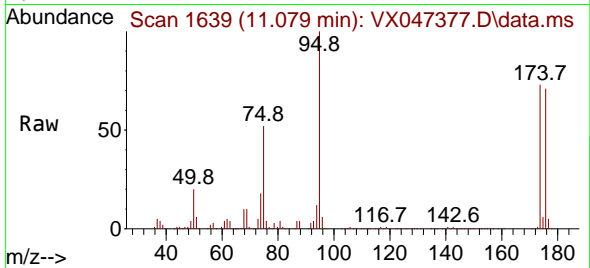




#76
 1,2,3-Trichloropropane
 Concen: 27.609 ug/l
 RT: 11.079 min Scan# 1639
 Delta R.T. -0.158 min
 Lab File: VX047377.D
 Acq: 18 Aug 2025 13:27

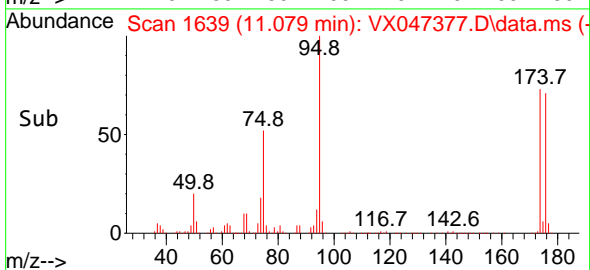
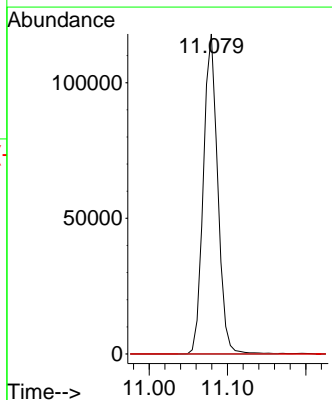
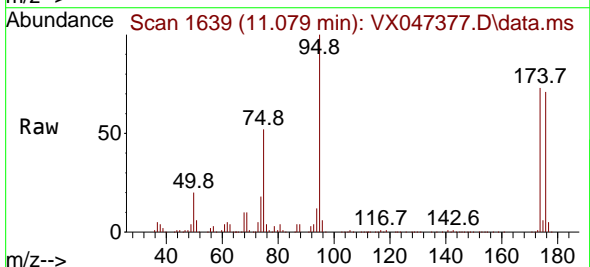
Instrument : MSVOA_X
 ClientSampleId : TW-705R-S

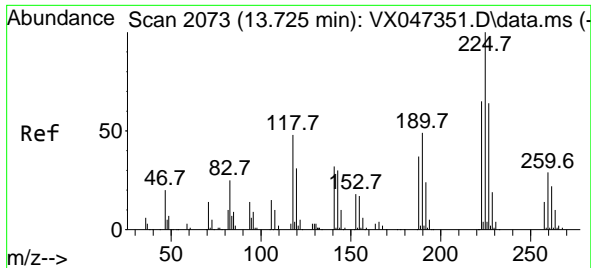
Tgt Ion: 75 Resp: 149824
 Ion Ratio Lower Upper
 75 100
 77 1.5 19.4 58.2#



#81
 trans-1,4-Dichloro-2-butene
 Concen: 108.997 ug/l
 RT: 11.079 min Scan# 1639
 Delta R.T. 0.061 min
 Lab File: VX047377.D
 Acq: 18 Aug 2025 13:27

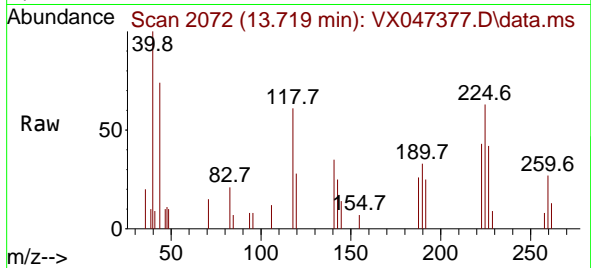
Tgt Ion: 75 Resp: 149824
 Ion Ratio Lower Upper
 75 100
 53 0.0 85.2 127.8#
 89 0.0 36.7 55.1#





#94
 Hexachlorobutadiene
 Concen: 0.235 ug/l
 RT: 13.719 min Scan# 2072
 Delta R.T. -0.006 min
 Lab File: VX047377.D
 Acq: 18 Aug 2025 13:27

Instrument :
 MSVOA_X
 ClientSampleId :
 TW-705R-S



Tgt Ion: 225 Resp: 575

Ion	Ratio	Lower	Upper
225	100		
223	67.1	32.2	96.6
227	79.5	31.6	95.0

