

Data Path : Z:\voasrv\HPCHEM1\MSVOA_X\Data\VX081825\
 Data File : VX047380.D
 Acq On : 18 Aug 2025 14:31
 Operator : JC/MD
 Sample : Q2815-04RE
 Misc : 5.0mL/MSVOA_X/WATER
 ALS Vial : 11 Sample Multiplier: 1

Instrument :
 MSVOA_X
 ClientSampleId :
 TW-10P-S

Quant Time: Aug 19 01:42:58 2025
 Quant Method : Z:\voasrv\HPCHEM1\MSVOA_X\Method\82X081525W.M
 Quant Title : SW846 8260
 QLast Update : Mon Aug 18 04:18:28 2025
 Response via : Initial Calibration

Compound	R.T.	QIon	Response	Conc	Units	Dev(Min)

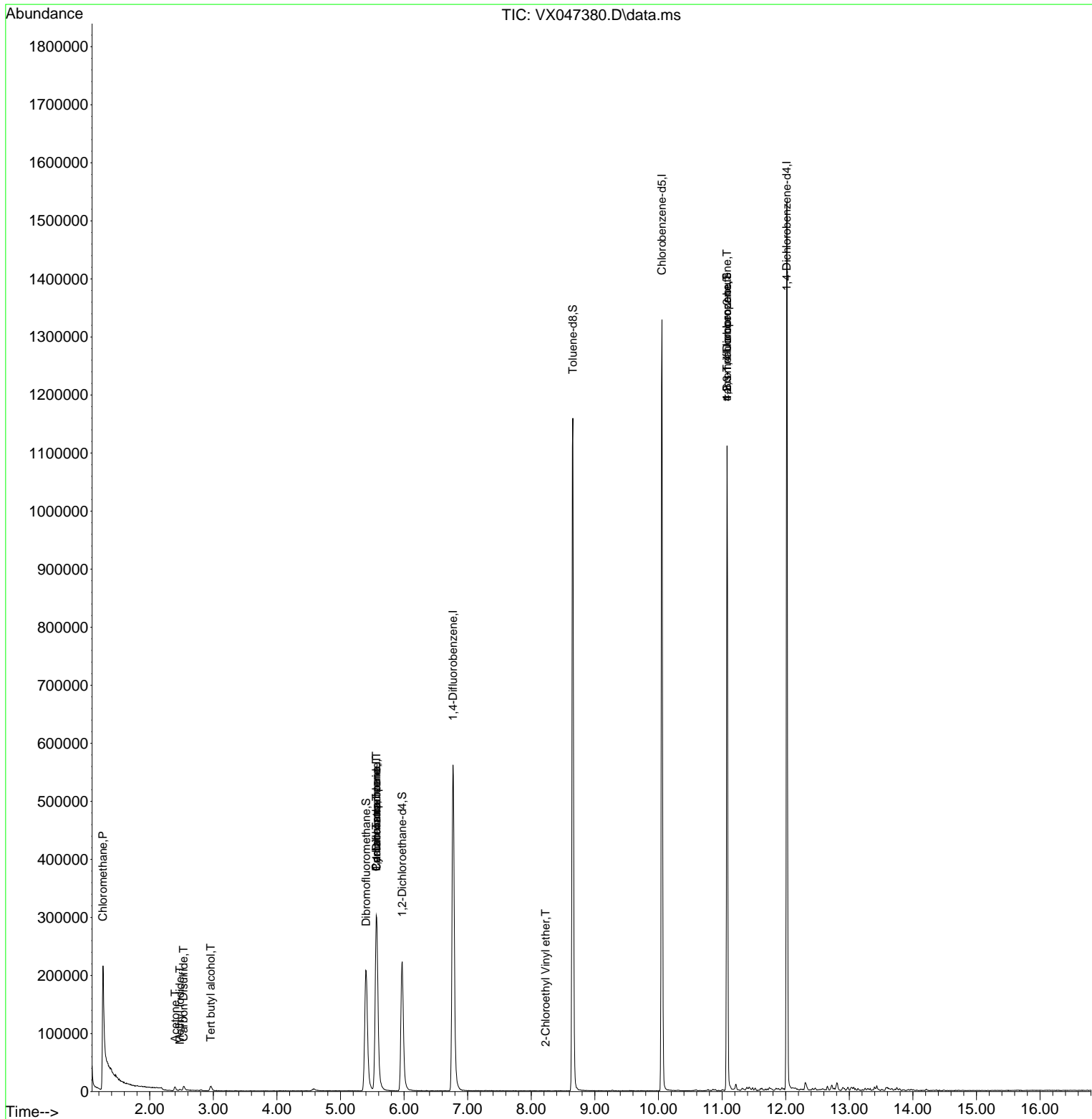
Internal Standards						
1) Pentafluorobenzene	5.562	168	309908	50.000	ug/l	0.00
34) 1,4-Difluorobenzene	6.769	114	607870	50.000	ug/l	0.00
63) Chlorobenzene-d5	10.055	117	591077	50.000	ug/l	0.00
72) 1,4-Dichlorobenzene-d4	12.018	152	297143	50.000	ug/l	0.00
System Monitoring Compounds						
33) 1,2-Dichloroethane-d4	5.970	65	235710	54.345	ug/l	0.00
Spiked Amount	50.000	Range 78 - 117	Recovery	=	108.700%	
35) Dibromofluoromethane	5.403	113	200682	50.868	ug/l	0.00
Spiked Amount	50.000	Range 75 - 124	Recovery	=	101.740%	
50) Toluene-d8	8.653	98	709656	50.327	ug/l	0.00
Spiked Amount	50.000	Range 92 - 112	Recovery	=	100.660%	
62) 4-Bromofluorobenzene	11.079	95	288877	55.516	ug/l	0.00
Spiked Amount	50.000	Range 83 - 123	Recovery	=	111.040%	
Target Compounds						
					Qvalue	
3) Chloromethane	1.264	50	6499	1.829	ug/l #	41
10) Methyl Iodide	2.477	142	2861	0.436	ug/l	99
11) Tert butyl alcohol	2.959	59	3827	10.143	ug/l #	72
16) Acetone	2.398	43	8764	5.376	ug/l	96
17) Carbon Disulfide	2.532	76	9530	0.809	ug/l #	91
31) Cyclohexane	5.562	56	7021	1.006	ug/l #	25
36) 1,1-Dichloropropene	5.562	75	26257	4.216	ug/l #	45
38) Carbon Tetrachloride	5.562	117	33084	4.861	ug/l #	15
58) 2-Chloroethyl Vinyl ether	8.226	63	49	8.371	ug/l #	46
76) 1,2,3-Trichloropropane	11.079	75	150115	27.544	ug/l #	38
81) trans-1,4-Dichloro-2-b...	11.079	75	150115	108.762	ug/l #	7

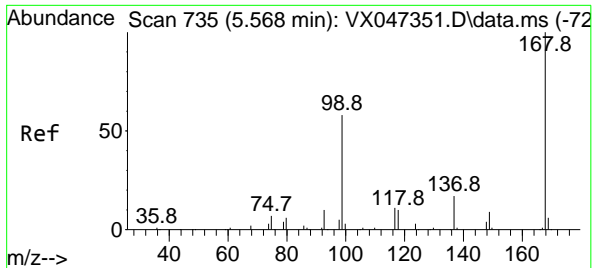
(#) = qualifier out of range (m) = manual integration (+) = signals summed

Data Path : Z:\voasrv\HPCHEM1\MSVOA_X\Data\VX081825\
 Data File : VX047380.D
 Acq On : 18 Aug 2025 14:31
 Operator : JC/MD
 Sample : Q2815-04RE
 Misc : 5.0mL/MSVOA_X/WATER
 ALS Vial : 11 Sample Multiplier: 1

Instrument :
 MSVOA_X
 ClientSampleId :
 TW-10P-S

Quant Time: Aug 19 01:42:58 2025
 Quant Method : Z:\voasrv\HPCHEM1\MSVOA_X\Method\82X081525W.M
 Quant Title : SW846 8260
 QLast Update : Mon Aug 18 04:18:28 2025
 Response via : Initial Calibration

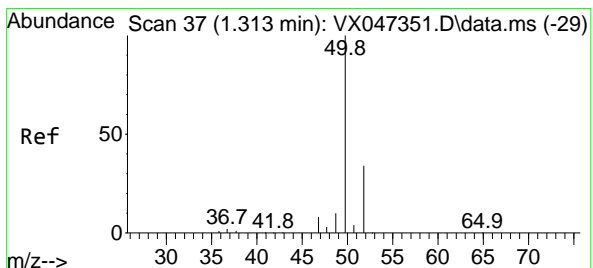
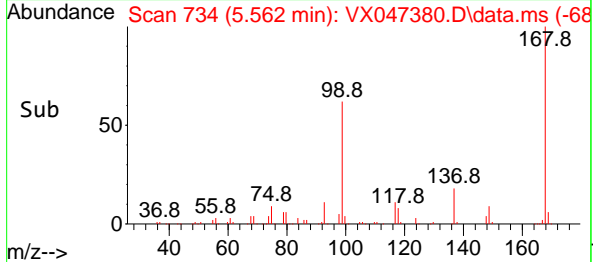
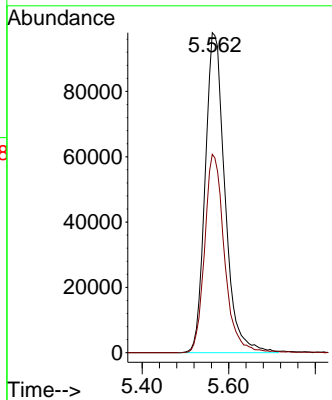
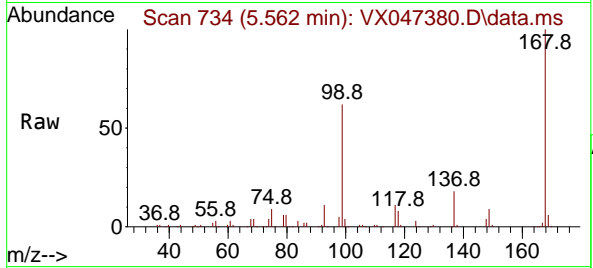




#1
 Pentafluorobenzene
 Concen: 50.000 ug/l
 RT: 5.562 min Scan# 71
 Delta R.T. -0.006 min
 Lab File: VX047380.D
 Acq: 18 Aug 2025 14:31

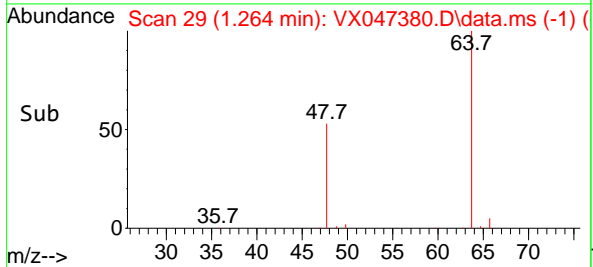
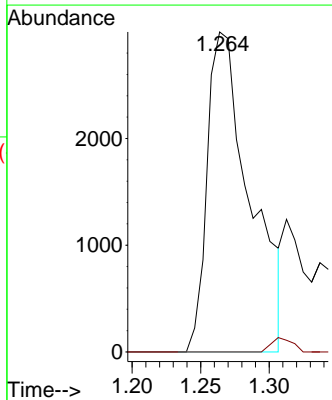
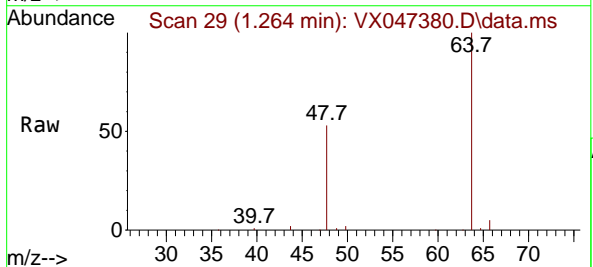
Instrument :
 MSVOA_X
 ClientSampleId :
 TW-10P-S

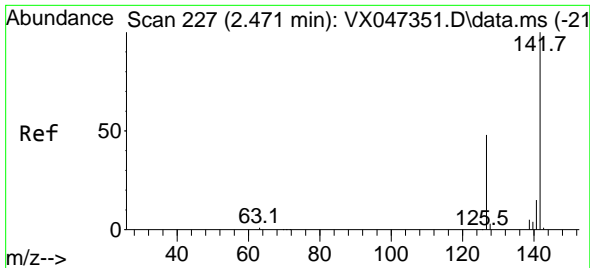
Tgt Ion:168 Resp: 309908
 Ion Ratio Lower Upper
 168 100
 99 62.0 47.9 71.9



#3
 Chloromethane
 Concen: 1.829 ug/l
 RT: 1.264 min Scan# 29
 Delta R.T. -0.049 min
 Lab File: VX047380.D
 Acq: 18 Aug 2025 14:31

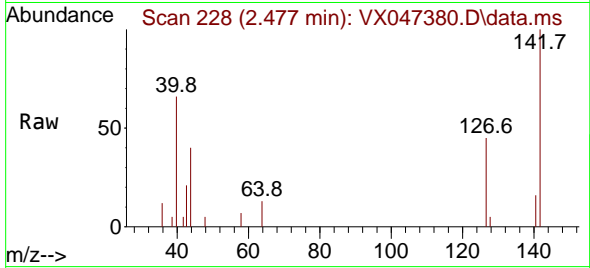
Tgt Ion: 50 Resp: 6499
 Ion Ratio Lower Upper
 50 100
 52 0.0 27.0 40.4#



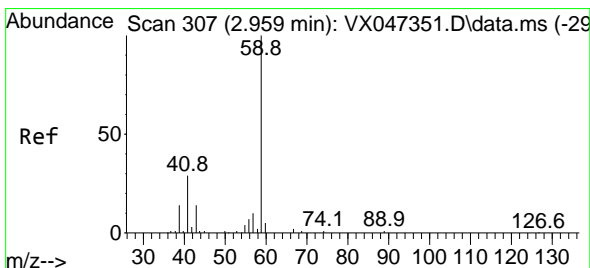
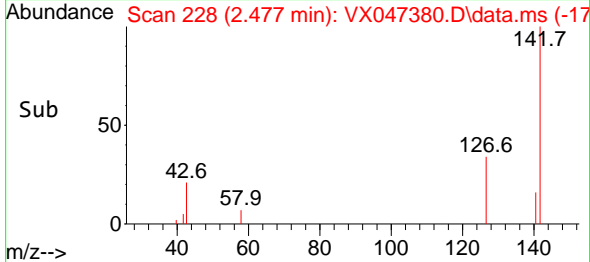
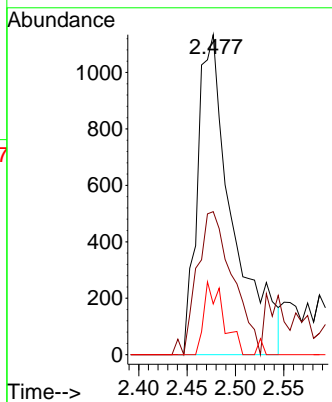


#10
Methyl Iodide
Concen: 0.436 ug/l
RT: 2.477 min Scan# 21
Delta R.T. 0.006 min
Lab File: VX047380.D
Acq: 18 Aug 2025 14:31

Instrument : MSVOA_X
Client SampleId : TW-10P-S

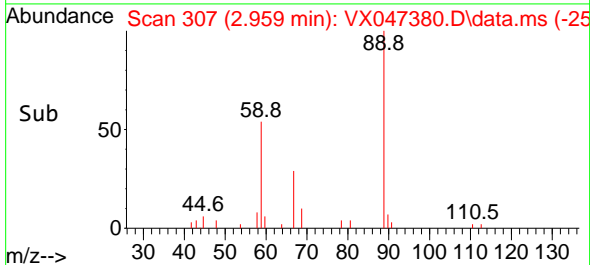
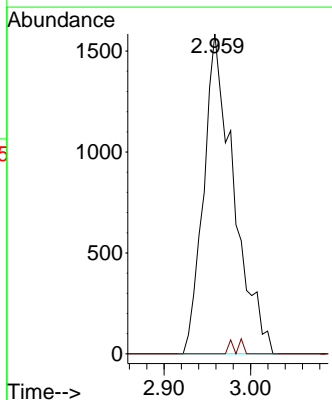
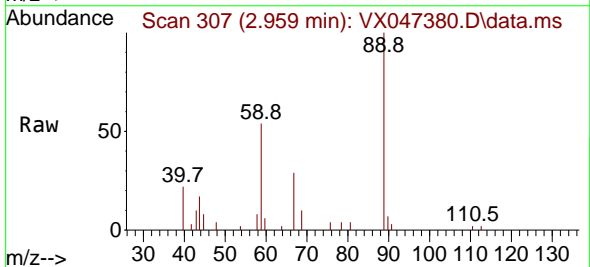


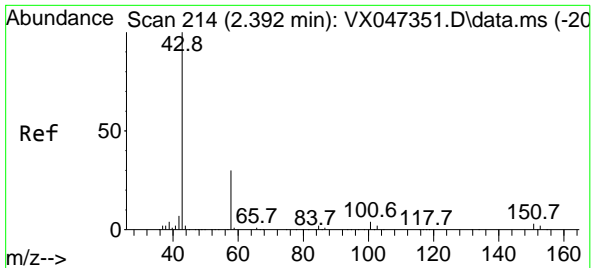
Tgt Ion:142 Resp: 2861
Ion Ratio Lower Upper
142 100
127 45.4 36.1 54.1
141 12.7 11.1 16.7



#11
Tert butyl alcohol
Concen: 10.143 ug/l
RT: 2.959 min Scan# 307
Delta R.T. 0.000 min
Lab File: VX047380.D
Acq: 18 Aug 2025 14:31

Tgt Ion: 59 Resp: 3827
Ion Ratio Lower Upper
59 100
57 0.0 8.3 12.5#

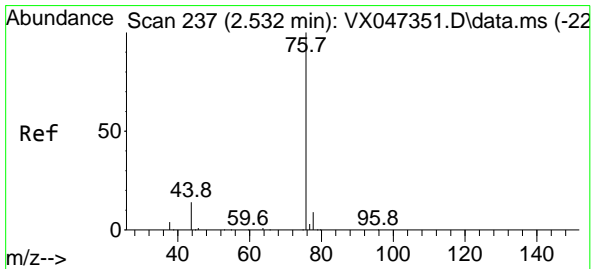
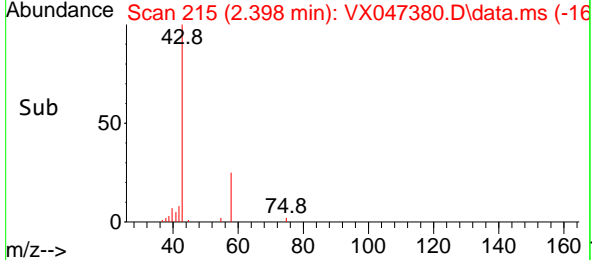
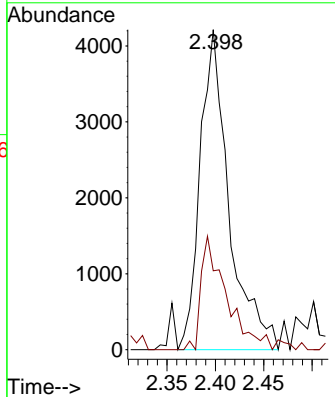
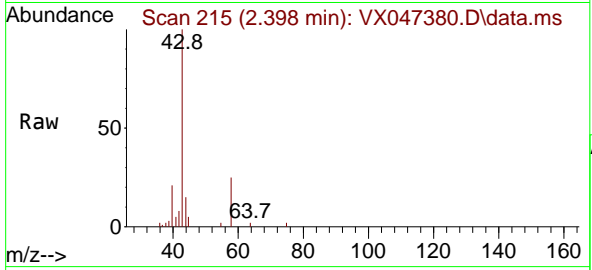




#16
 Acetone
 Concen: 5.376 ug/l
 RT: 2.398 min Scan# 21
 Delta R.T. 0.006 min
 Lab File: VX047380.D
 Acq: 18 Aug 2025 14:31

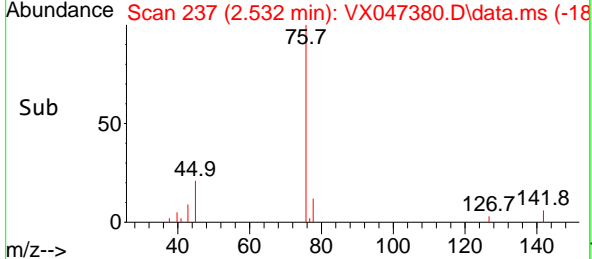
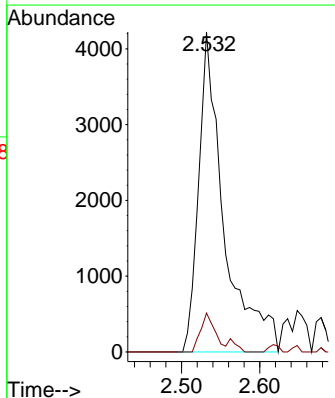
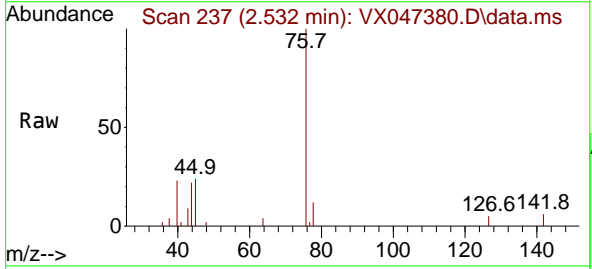
Instrument : MSVOA_X
 ClientSampleId : TW-10P-S

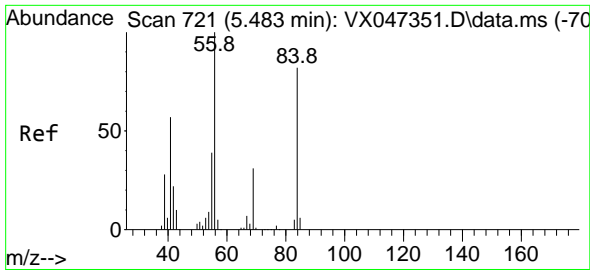
Tgt Ion: 43 Resp: 8764
 Ion Ratio Lower Upper
 43 100
 58 28.7 24.8 37.2



#17
 Carbon Disulfide
 Concen: 0.809 ug/l
 RT: 2.532 min Scan# 237
 Delta R.T. 0.000 min
 Lab File: VX047380.D
 Acq: 18 Aug 2025 14:31

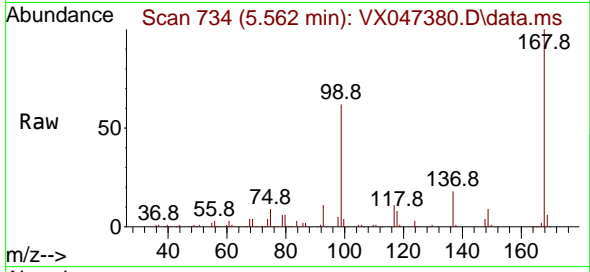
Tgt Ion: 76 Resp: 9530
 Ion Ratio Lower Upper
 76 100
 78 12.1 7.2 10.8#



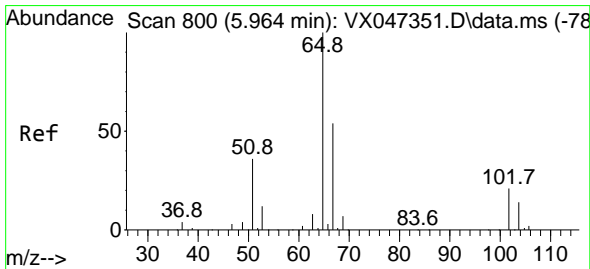
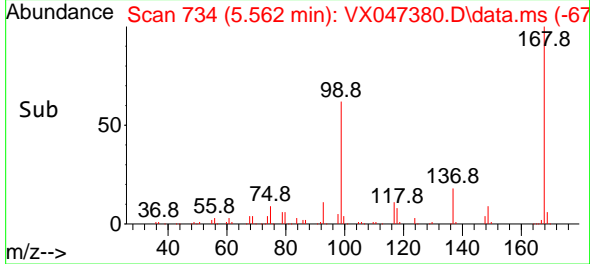
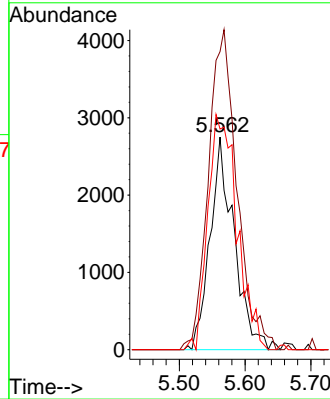


#31
 Cyclohexane
 Concen: 1.006 ug/l
 RT: 5.562 min Scan# 701
 Delta R.T. 0.079 min
 Lab File: VX047380.D
 Acq: 18 Aug 2025 14:31

Instrument : MSVOA_X
 ClientSampleId : TW-10P-S

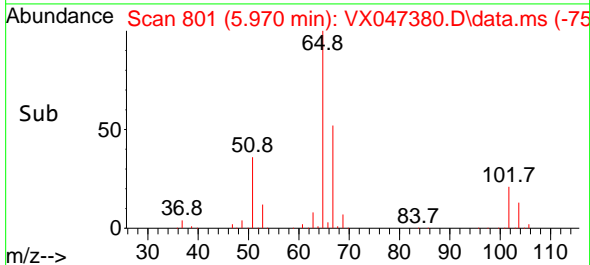
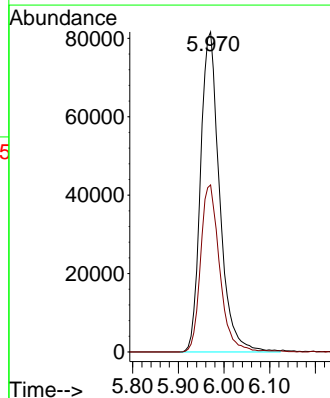
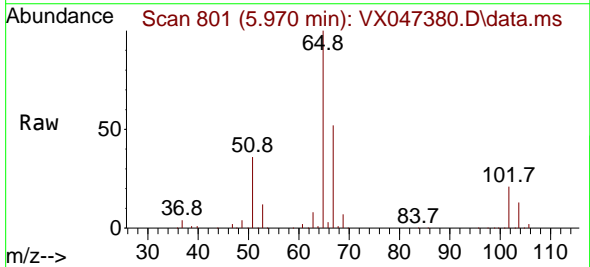


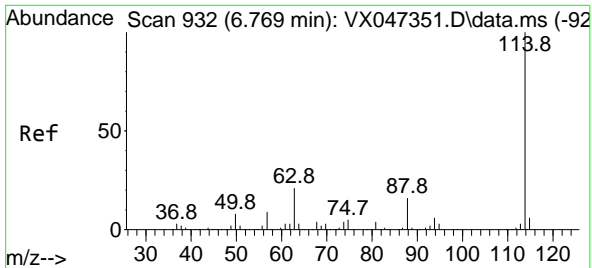
Tgt Ion: 56 Resp: 7021
 Ion Ratio Lower Upper
 56 100
 69 144.0 24.3 36.5#
 84 103.7 65.3 97.9#



#33
 1,2-Dichloroethane-d4
 Concen: 54.345 ug/l
 RT: 5.970 min Scan# 801
 Delta R.T. 0.006 min
 Lab File: VX047380.D
 Acq: 18 Aug 2025 14:31

Tgt Ion: 65 Resp: 235710
 Ion Ratio Lower Upper
 65 100
 67 52.2 0.0 106.0



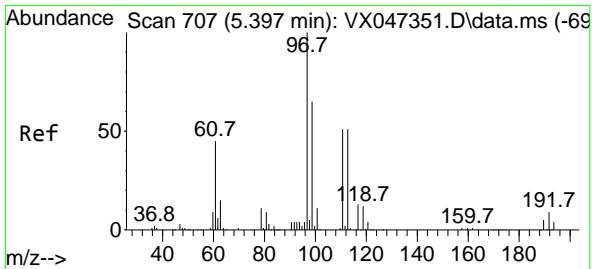
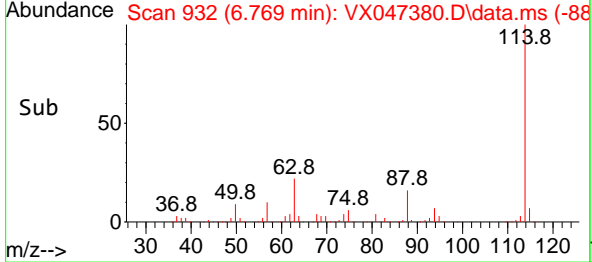
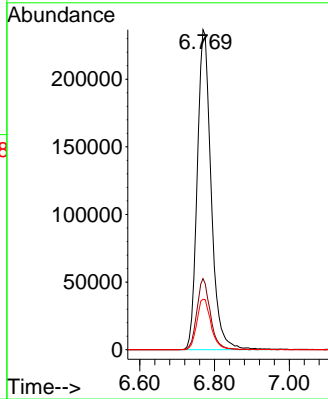
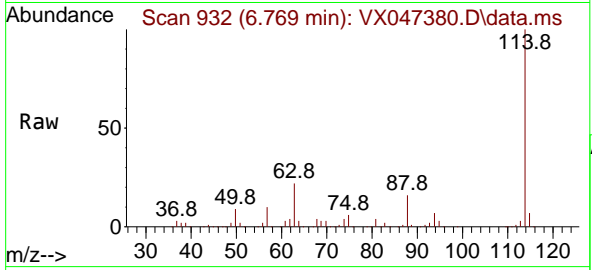


#34
 1,4-Difluorobenzene
 Concen: 50.000 ug/l
 RT: 6.769 min Scan# 91
 Delta R.T. 0.000 min
 Lab File: VX047380.D
 Acq: 18 Aug 2025 14:31

Instrument :
 MSVOA_X
 ClientSampleId :
 TW-10P-S

Tgt Ion:114 Resp: 607870

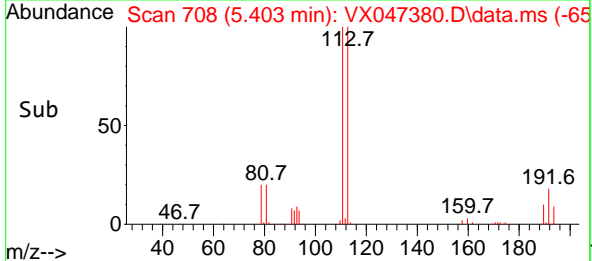
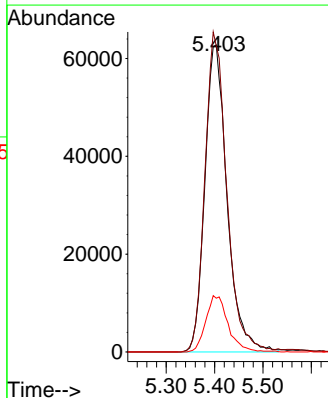
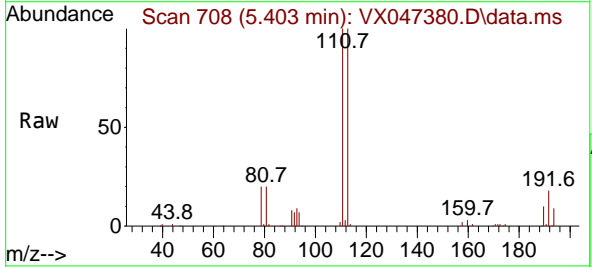
Ion	Ratio	Lower	Upper
114	100		
63	22.2	0.0	42.4
88	15.8	0.0	33.0

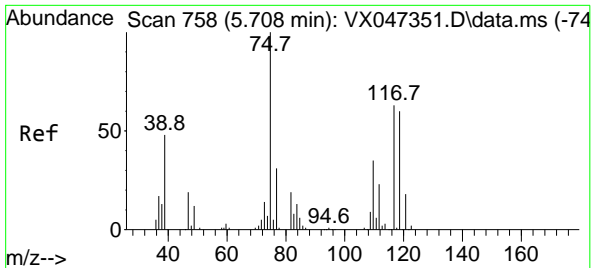


#35
 Dibromofluoromethane
 Concen: 50.868 ug/l
 RT: 5.403 min Scan# 708
 Delta R.T. 0.006 min
 Lab File: VX047380.D
 Acq: 18 Aug 2025 14:31

Tgt Ion:113 Resp: 200682

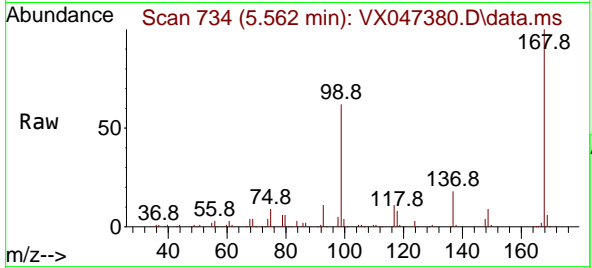
Ion	Ratio	Lower	Upper
113	100		
111	102.3	81.4	122.2
192	18.3	14.1	21.1



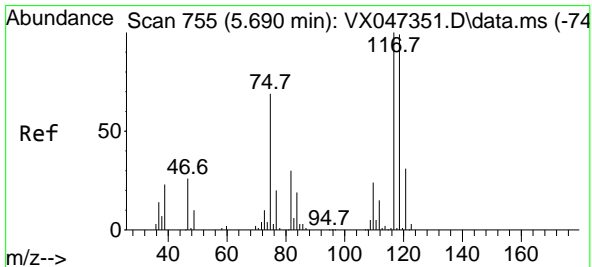
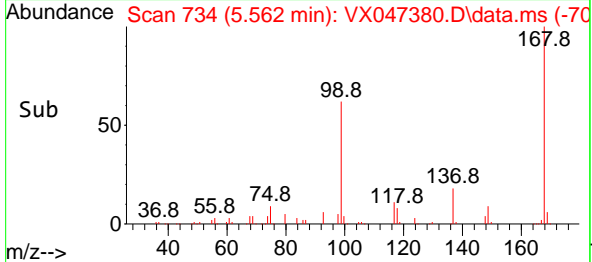
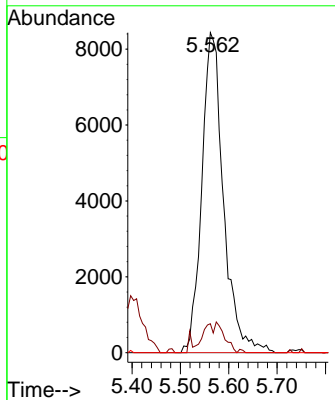


#36
 1,1-Dichloropropene
 Concen: 4.216 ug/l
 RT: 5.562 min Scan# 734
 Delta R.T. -0.146 min
 Lab File: VX047380.D
 Acq: 18 Aug 2025 14:31

Instrument : MSVOA_X
 ClientSampleId : TW-10P-S

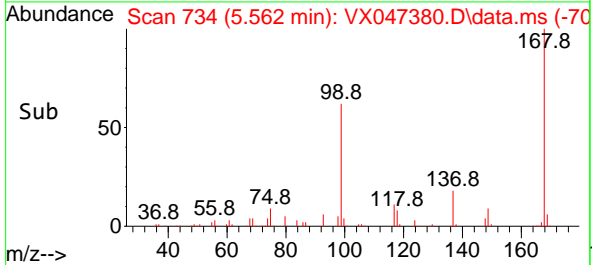
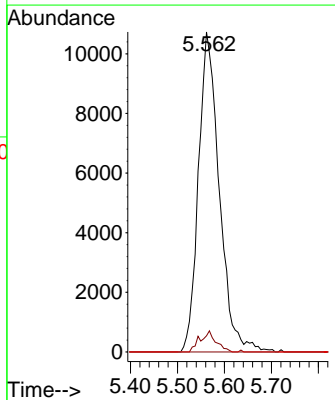
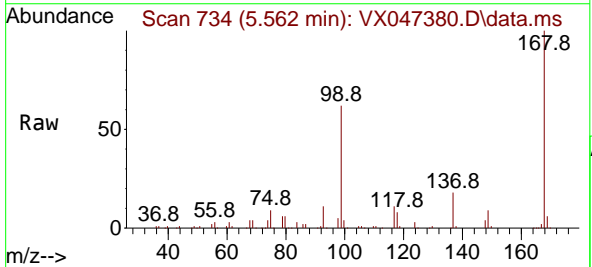


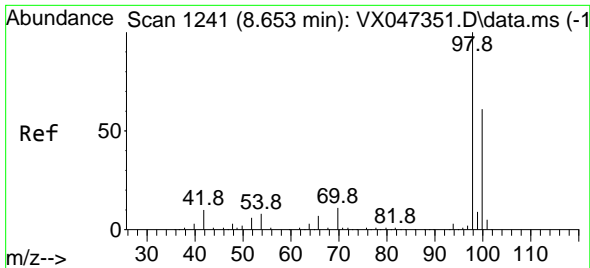
Tgt Ion: 75 Resp: 26257
 Ion Ratio Lower Upper
 75 100
 110 3.0 17.4 52.2#
 77 0.0 24.4 36.6#



#38
 Carbon Tetrachloride
 Concen: 4.861 ug/l
 RT: 5.562 min Scan# 734
 Delta R.T. -0.128 min
 Lab File: VX047380.D
 Acq: 18 Aug 2025 14:31

Tgt Ion: 117 Resp: 33084
 Ion Ratio Lower Upper
 117 100
 119 5.1 78.5 117.7#
 121 0.0 24.7 37.1#

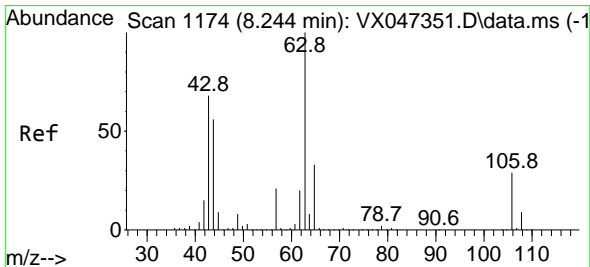
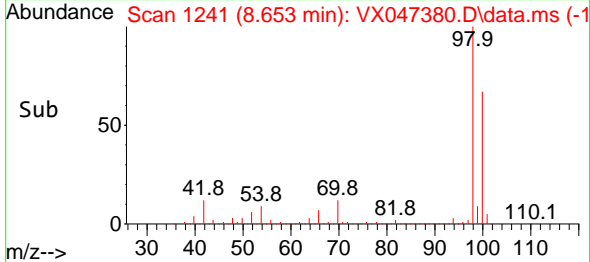
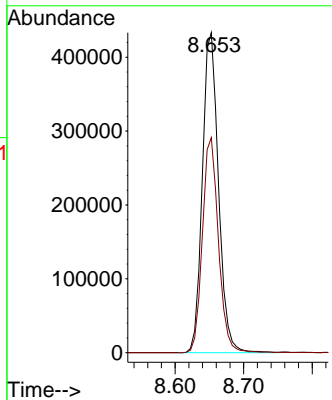
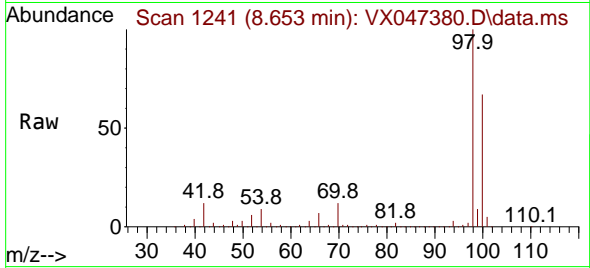




#50
 Toluene-d8
 Concen: 50.327 ug/l
 RT: 8.653 min Scan# 111
 Delta R.T. 0.000 min
 Lab File: VX047380.D
 Acq: 18 Aug 2025 14:31

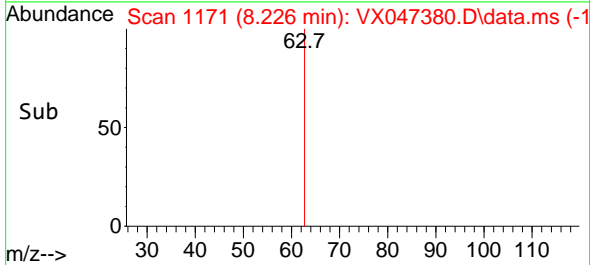
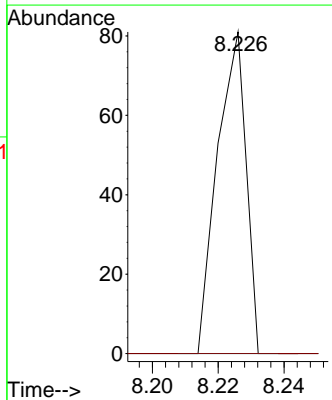
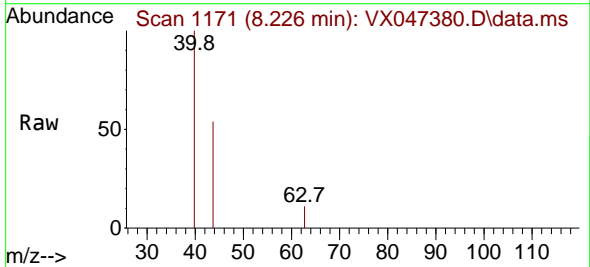
Instrument :
 MSVOA_X
 ClientSampleId :
 TW-10P-S

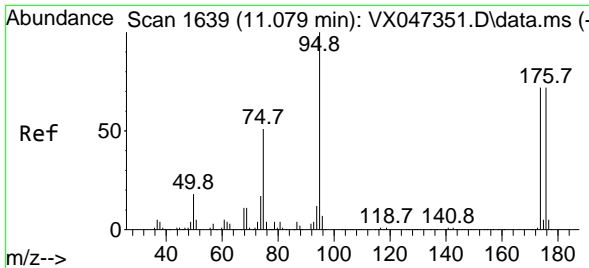
Tgt Ion: 98 Resp: 709656
 Ion Ratio Lower Upper
 98 100
 100 66.7 53.9 80.9



#58
 2-Chloroethyl Vinyl ether
 Concen: 8.371 ug/l
 RT: 8.226 min Scan# 1171
 Delta R.T. -0.018 min
 Lab File: VX047380.D
 Acq: 18 Aug 2025 14:31

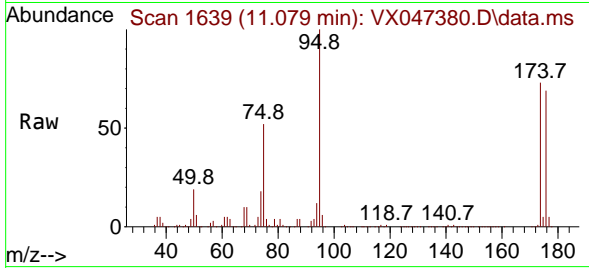
Tgt Ion: 63 Resp: 49
 Ion Ratio Lower Upper
 63 100
 106 0.0 22.8 34.2#



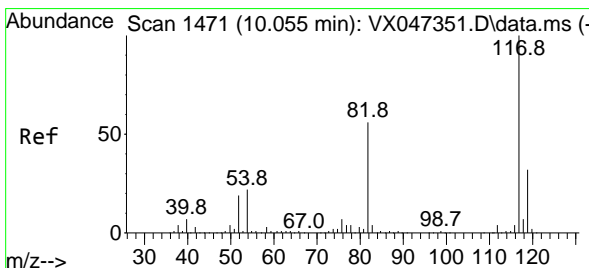
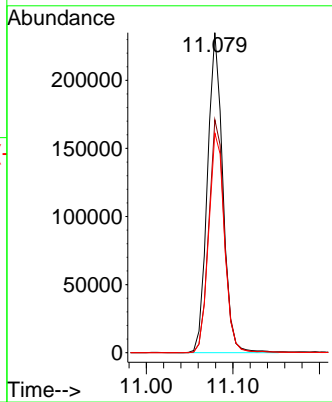
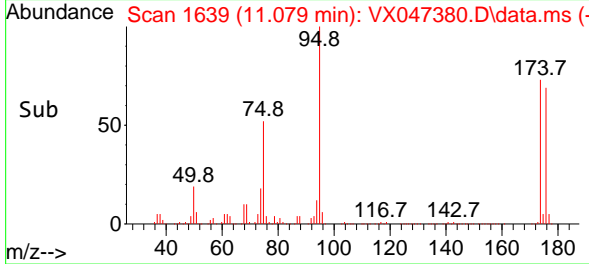


#62
 4-Bromofluorobenzene
 Concen: 55.516 ug/l
 RT: 11.079 min Scan# 1639
 Delta R.T. 0.000 min
 Lab File: VX047380.D
 Acq: 18 Aug 2025 14:31

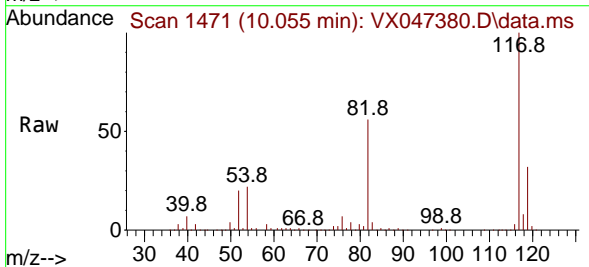
Instrument : MSVOA_X
 ClientSampleId : TW-10P-S



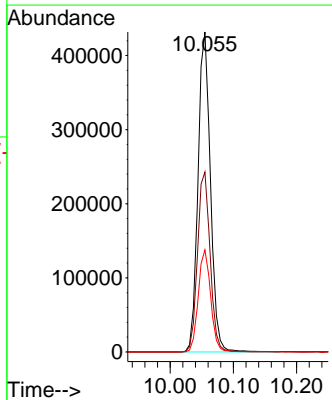
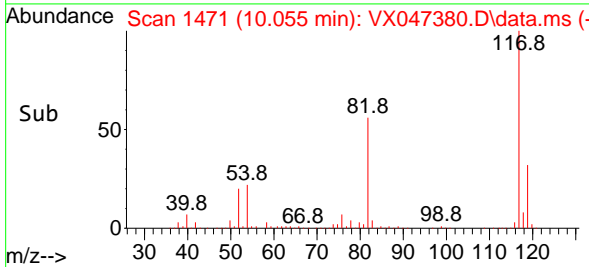
Tgt Ion: 95 Resp: 288877
 Ion Ratio Lower Upper
 95 100
 174 74.5 0.0 148.0
 176 70.9 0.0 145.4

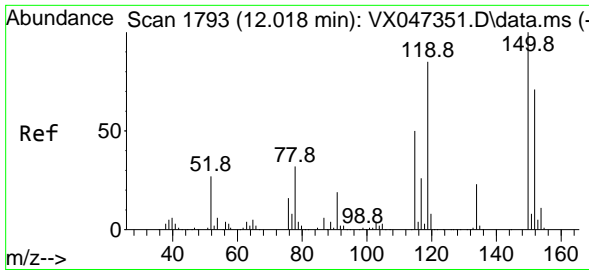


#63
 Chlorobenzene-d5
 Concen: 50.000 ug/l
 RT: 10.055 min Scan# 1471
 Delta R.T. 0.000 min
 Lab File: VX047380.D
 Acq: 18 Aug 2025 14:31



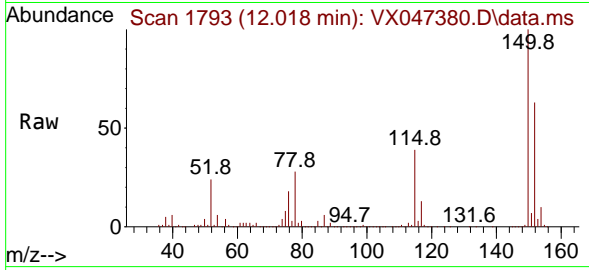
Tgt Ion: 117 Resp: 591077
 Ion Ratio Lower Upper
 117 100
 82 56.2 45.0 67.4
 119 31.9 25.8 38.8



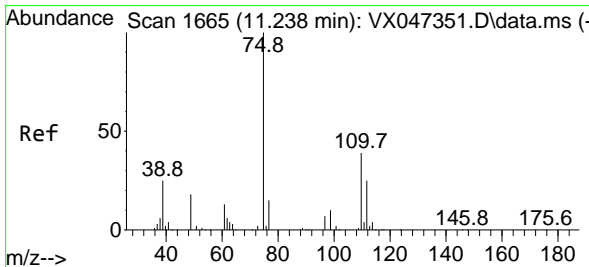
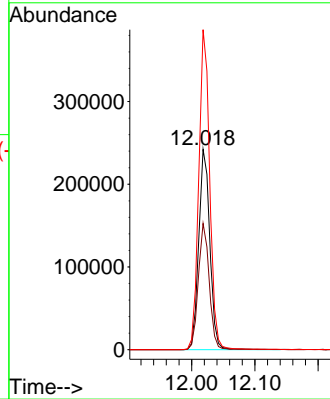
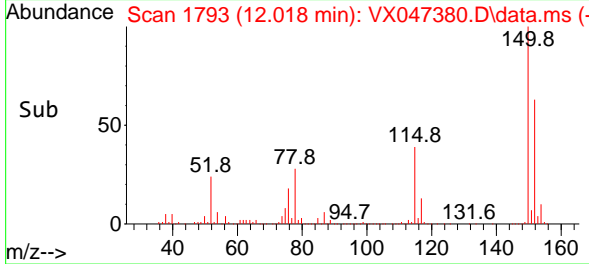


#72
 1,4-Dichlorobenzene-d4
 Concen: 50.000 ug/l
 RT: 12.018 min Scan# 11
 Delta R.T. 0.000 min
 Lab File: VX047380.D
 Acq: 18 Aug 2025 14:31

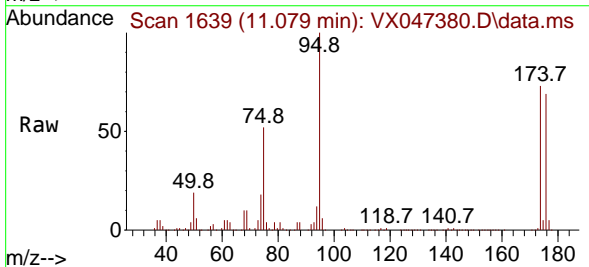
Instrument :
 MSVOA_X
 ClientSampleId :
 TW-10P-S



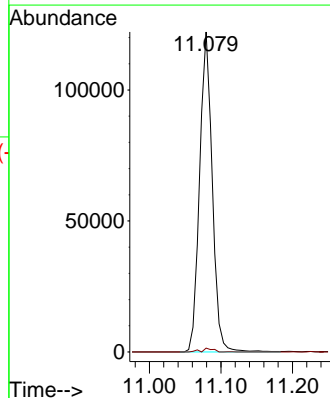
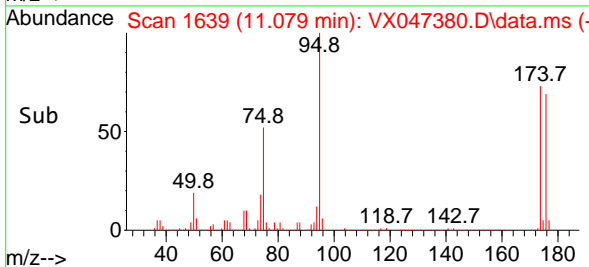
Tgt Ion:152 Resp: 297143
 Ion Ratio Lower Upper
 152 100
 115 61.7 44.6 133.8
 150 157.1 0.0 349.8

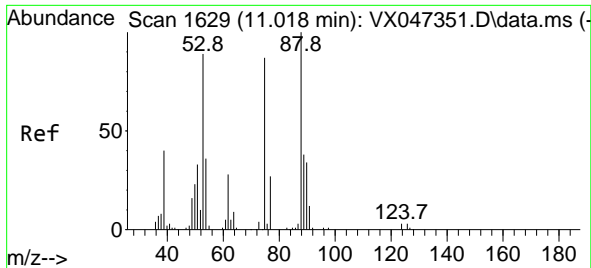


#76
 1,2,3-Trichloropropane
 Concen: 27.544 ug/l
 RT: 11.079 min Scan# 1639
 Delta R.T. -0.158 min
 Lab File: VX047380.D
 Acq: 18 Aug 2025 14:31



Tgt Ion: 75 Resp: 150115
 Ion Ratio Lower Upper
 75 100
 77 1.1 19.4 58.2#





#81
 trans-1,4-Dichloro-2-butene
 Concen: 108.762 ug/l
 RT: 11.079 min Scan# 10
 Delta R.T. 0.061 min
 Lab File: VX047380.D
 Acq: 18 Aug 2025 14:31

Instrument :
 MSVOA_X
 ClientSampleId :
 TW-10P-S

Tgt Ion: 75 Resp: 150115
 Ion Ratio Lower Upper
 75 100
 53 0.0 85.2 127.8#
 89 0.0 36.7 55.1#

