

Data Path : Z:\voasrv\HPCHEM1\MSVOA_X\Data\VX081825\
 Data File : VX047381.D
 Acq On : 18 Aug 2025 14:53
 Operator : JC/MD
 Sample : Q2815-05RE
 Misc : 5.0mL/MSVOA_X/WATER
 ALS Vial : 12 Sample Multiplier: 1

Instrument :
 MSVOA_X
 ClientSampleId :
 TW-10P-W

Quant Time: Aug 19 01:43:21 2025
 Quant Method : Z:\voasrv\HPCHEM1\MSVOA_X\Method\82X081525W.M
 Quant Title : SW846 8260
 QLast Update : Mon Aug 18 04:18:28 2025
 Response via : Initial Calibration

Compound	R.T.	QIon	Response	Conc	Units	Dev(Min)

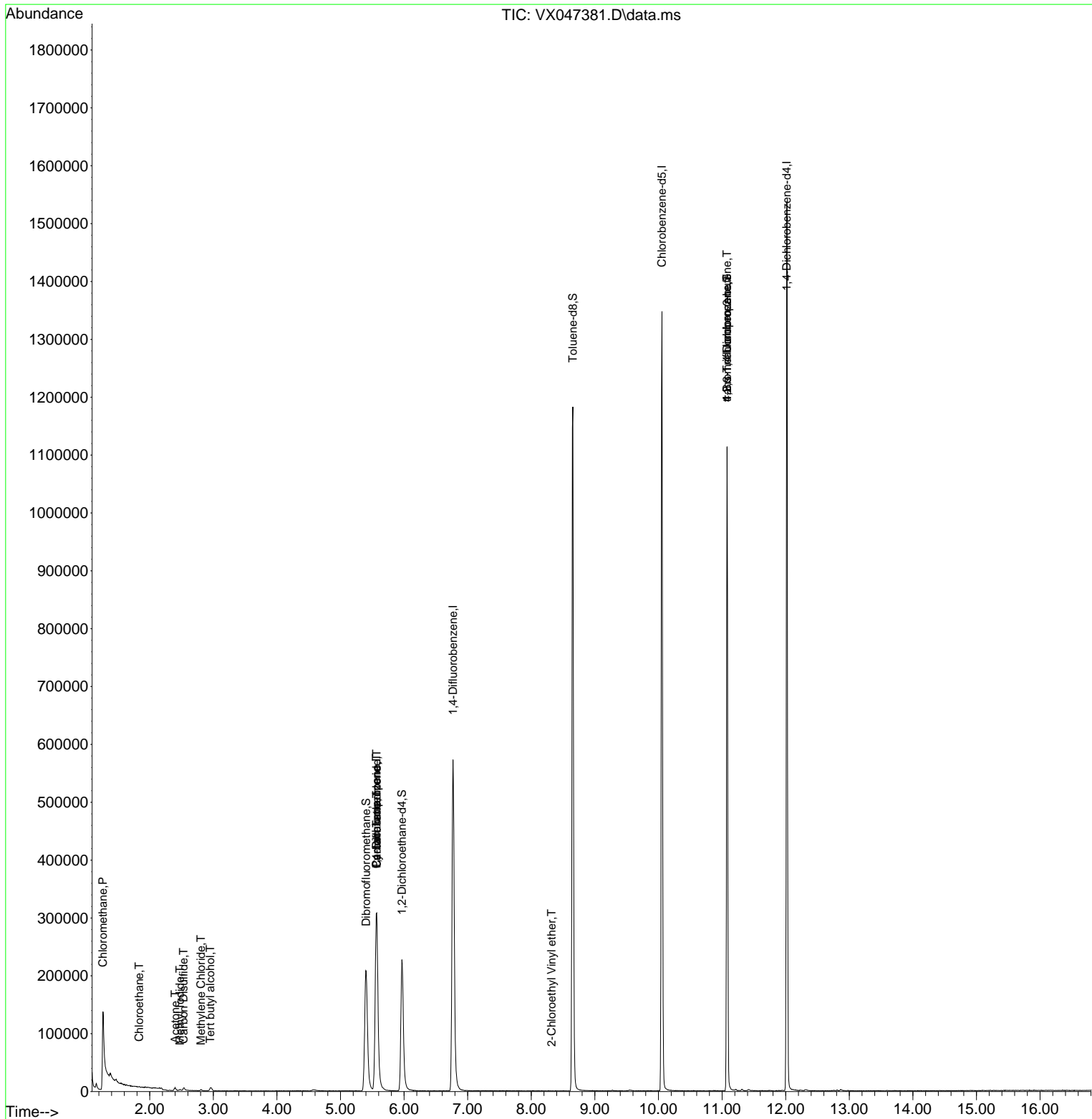
Internal Standards						
1) Pentafluorobenzene	5.568	168	309685	50.000	ug/l	0.00
34) 1,4-Difluorobenzene	6.769	114	613603	50.000	ug/l	0.00
63) Chlorobenzene-d5	10.055	117	600484	50.000	ug/l	0.00
72) 1,4-Dichlorobenzene-d4	12.018	152	297817	50.000	ug/l	0.00
System Monitoring Compounds						
33) 1,2-Dichloroethane-d4	5.964	65	234917	54.202	ug/l	0.00
Spiked Amount	50.000	Range 78 - 117	Recovery	=	108.400%	
35) Dibromofluoromethane	5.403	113	199891	50.194	ug/l	0.00
Spiked Amount	50.000	Range 75 - 124	Recovery	=	100.380%	
50) Toluene-d8	8.653	98	716925	50.367	ug/l	0.00
Spiked Amount	50.000	Range 92 - 112	Recovery	=	100.740%	
62) 4-Bromofluorobenzene	11.079	95	289159	55.051	ug/l	0.00
Spiked Amount	50.000	Range 83 - 123	Recovery	=	110.100%	
Target Compounds						
					Qvalue	
3) Chloromethane	1.264	50	5440	1.532	ug/l #	41
6) Chloroethane	1.831	64	2310	0.847	ug/l #	44
10) Methyl Iodide	2.477	142	2672	0.408	ug/l #	96
11) Tert butyl alcohol	2.953	59	2705	7.174	ug/l #	72
16) Acetone	2.398	43	6805	4.177	ug/l #	88
17) Carbon Disulfide	2.532	76	6025	0.512	ug/l	99
20) Methylene Chloride	2.806	84	903	0.209	ug/l #	70
31) Cyclohexane	5.568	56	7415	1.063	ug/l #	1
36) 1,1-Dichloropropene	5.562	75	26377	4.196	ug/l #	44
38) Carbon Tetrachloride	5.568	117	32649	4.753	ug/l #	15
58) 2-Chloroethyl Vinyl ether	8.317	63	23	8.362	ug/l #	46
76) 1,2,3-Trichloropropane	11.079	75	150415	27.537	ug/l #	38
81) trans-1,4-Dichloro-2-b...	11.079	75	150415	108.735	ug/l #	7

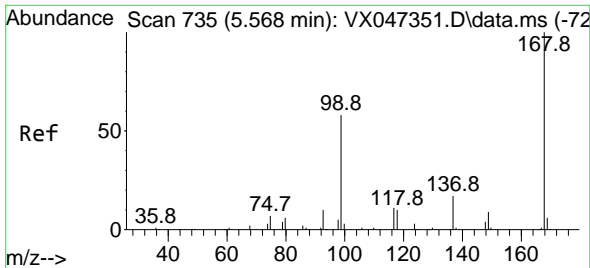
(#) = qualifier out of range (m) = manual integration (+) = signals summed

Data Path : Z:\voasrv\HPCHEM1\MSVOA_X\Data\VX081825\
 Data File : VX047381.D
 Acq On : 18 Aug 2025 14:53
 Operator : JC/MD
 Sample : Q2815-05RE
 Misc : 5.0mL/MSVOA_X/WATER
 ALS Vial : 12 Sample Multiplier: 1

Instrument :
 MSVOA_X
 ClientSampleId :
 TW-10P-W

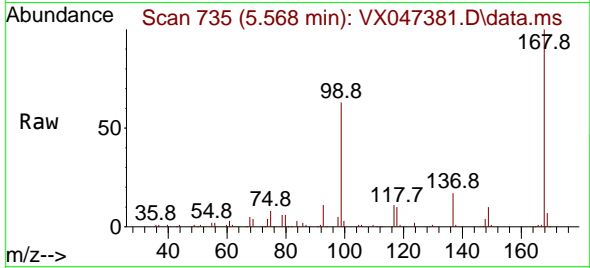
Quant Time: Aug 19 01:43:21 2025
 Quant Method : Z:\voasrv\HPCHEM1\MSVOA_X\Method\82X081525W.M
 Quant Title : SW846 8260
 QLast Update : Mon Aug 18 04:18:28 2025
 Response via : Initial Calibration



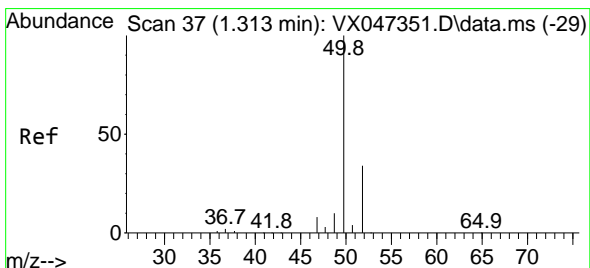
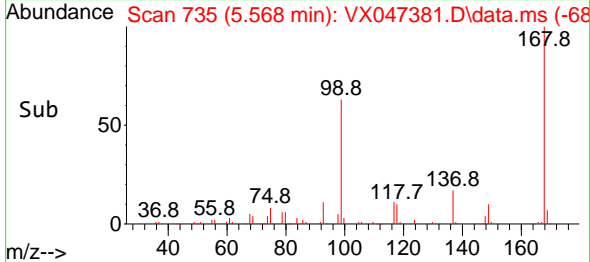
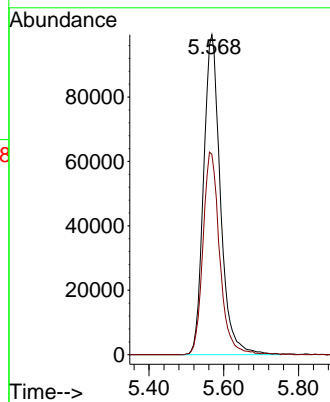


#1
 Pentafluorobenzene
 Concen: 50.000 ug/l
 RT: 5.568 min Scan# 71
 Delta R.T. -0.000 min
 Lab File: VX047381.D
 Acq: 18 Aug 2025 14:53

Instrument :
 MSVOA_X
 ClientSampleId :
 TW-10P-W

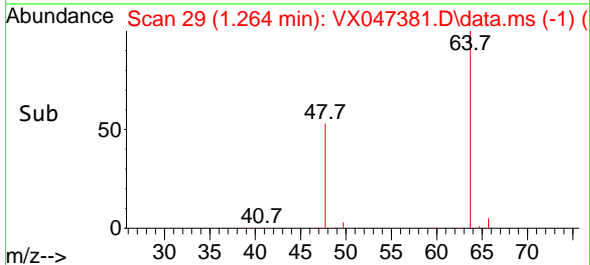
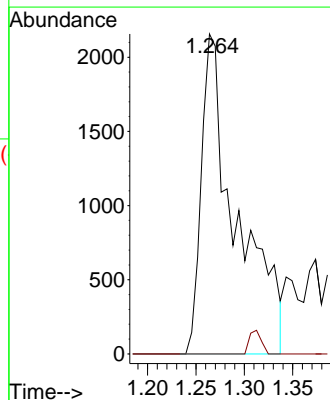
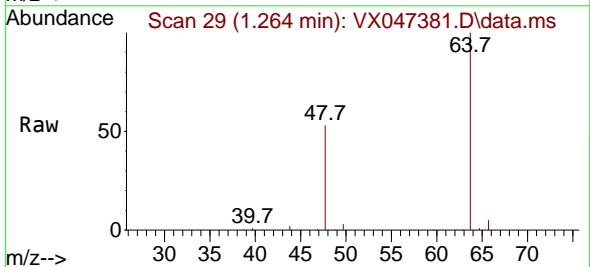


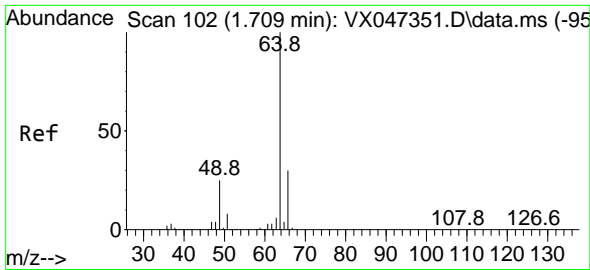
Tgt Ion:168 Resp: 309685
 Ion Ratio Lower Upper
 168 100
 99 62.6 47.9 71.9



#3
 Chloromethane
 Concen: 1.532 ug/l
 RT: 1.264 min Scan# 29
 Delta R.T. -0.049 min
 Lab File: VX047381.D
 Acq: 18 Aug 2025 14:53

Tgt Ion: 50 Resp: 5440
 Ion Ratio Lower Upper
 50 100
 52 0.0 27.0 40.4#

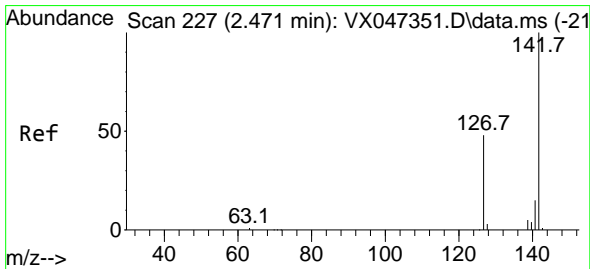
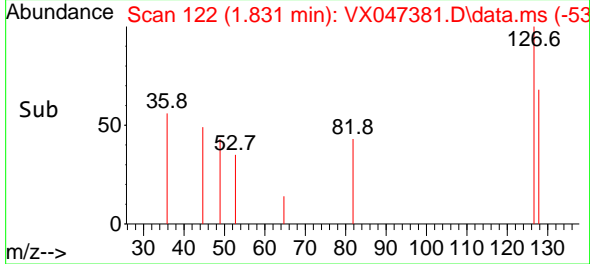
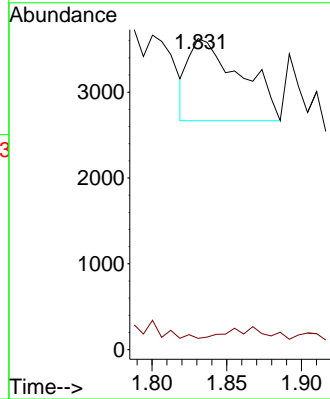
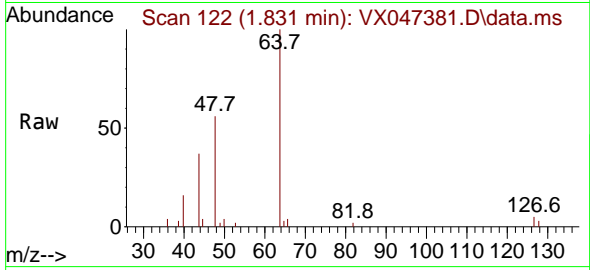




#6
 Chloroethane
 Concen: 0.847 ug/l
 RT: 1.831 min Scan# 11
 Delta R.T. 0.122 min
 Lab File: VX047381.D
 Acq: 18 Aug 2025 14:53

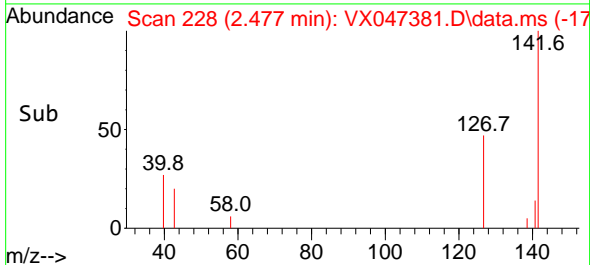
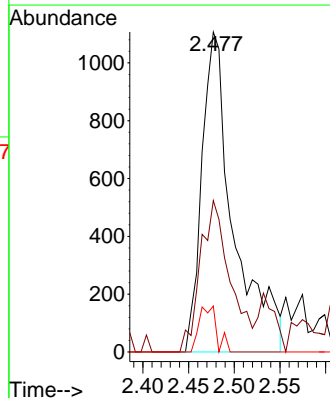
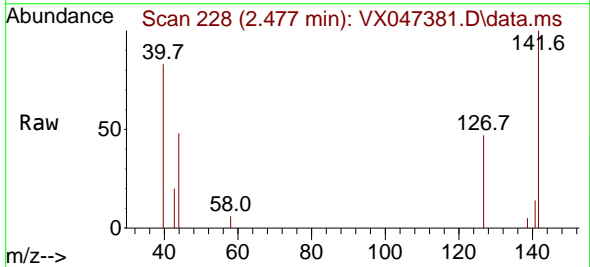
Instrument :
 MSVOA_X
 ClientSampleId :
 TW-10P-W

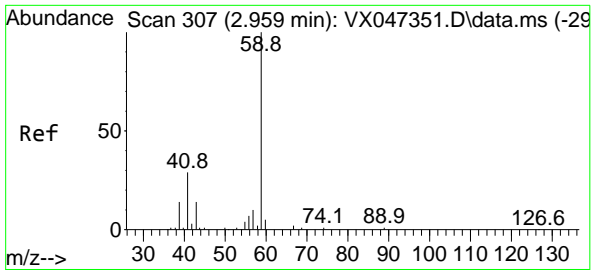
Tgt Ion: 64 Resp: 2310
 Ion Ratio Lower Upper
 64 100
 66 0.0 24.4 36.6#



#10
 Methyl Iodide
 Concen: 0.408 ug/l
 RT: 2.477 min Scan# 228
 Delta R.T. 0.006 min
 Lab File: VX047381.D
 Acq: 18 Aug 2025 14:53

Tgt Ion:142 Resp: 2672
 Ion Ratio Lower Upper
 142 100
 127 44.5 36.1 54.1
 141 8.0 11.1 16.7#

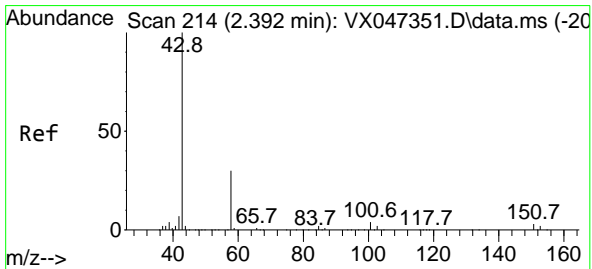
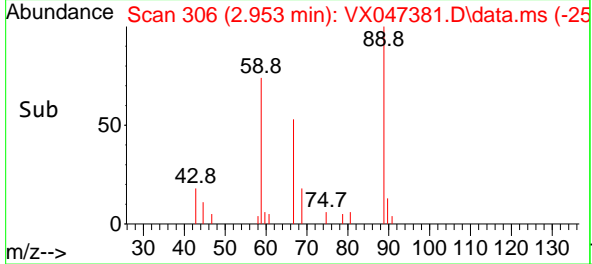
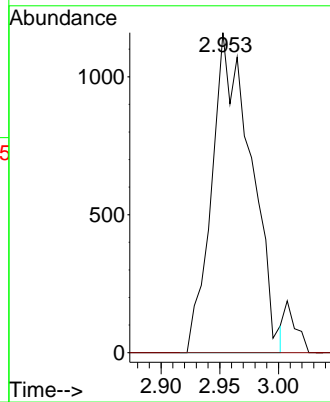
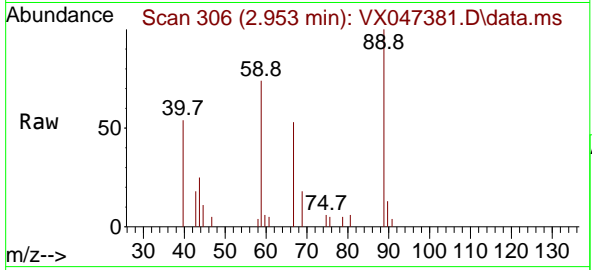




#11
 Tert butyl alcohol
 Concen: 7.174 ug/l
 RT: 2.953 min Scan# 307
 Delta R.T. -0.006 min
 Lab File: VX047381.D
 Acq: 18 Aug 2025 14:53

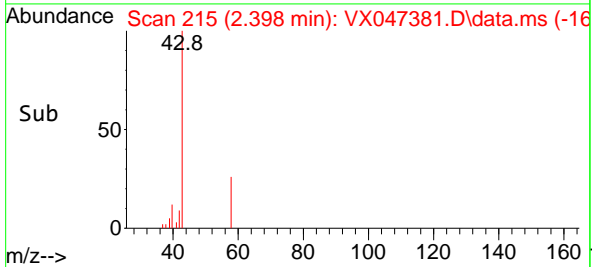
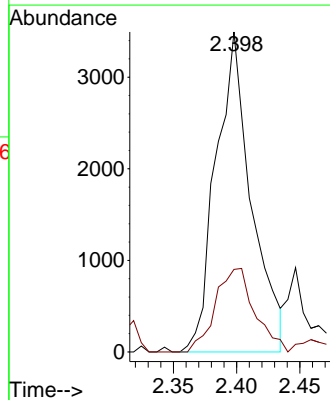
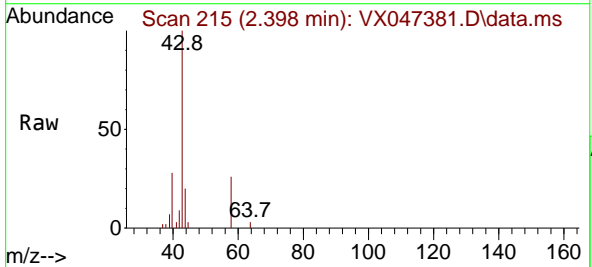
Instrument : MSVOA_X
 ClientSampleId : TW-10P-W

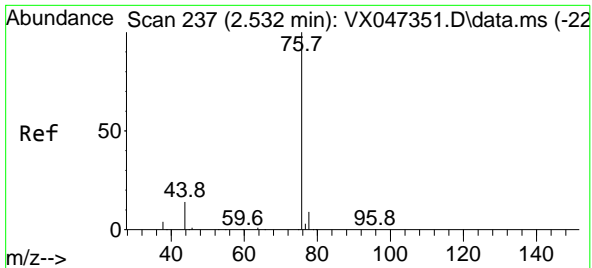
Tgt Ion: 59 Resp: 2705
 Ion Ratio Lower Upper
 59 100
 57 0.0 8.3 12.5#



#16
 Acetone
 Concen: 4.177 ug/l
 RT: 2.398 min Scan# 215
 Delta R.T. 0.006 min
 Lab File: VX047381.D
 Acq: 18 Aug 2025 14:53

Tgt Ion: 43 Resp: 6805
 Ion Ratio Lower Upper
 43 100
 58 24.3 24.8 37.2#

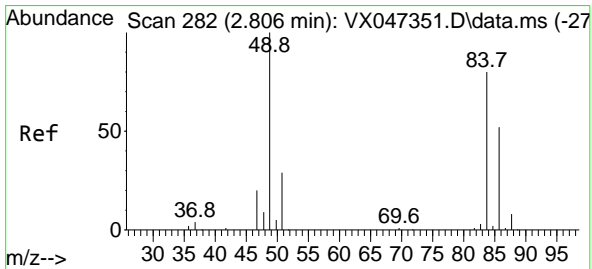
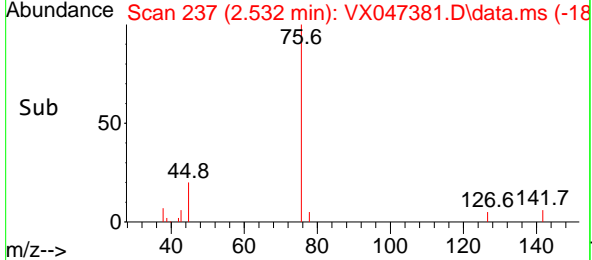
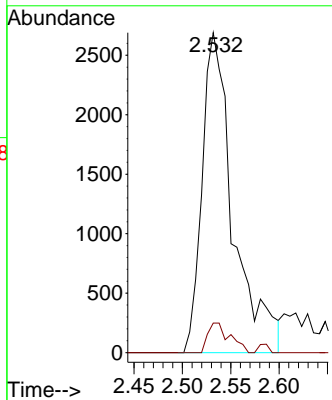
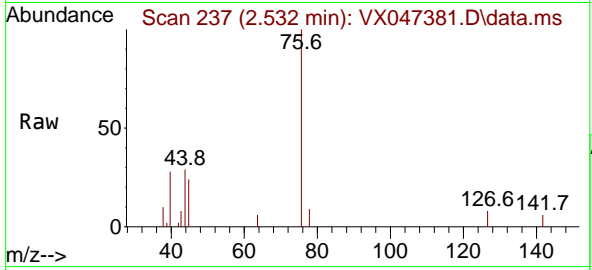




#17
 Carbon Disulfide
 Concen: 0.512 ug/l
 RT: 2.532 min Scan# 21
 Delta R.T. 0.000 min
 Lab File: VX047381.D
 Acq: 18 Aug 2025 14:53

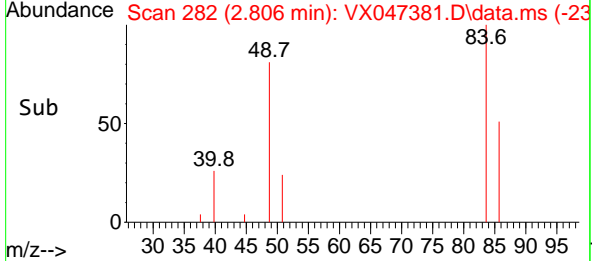
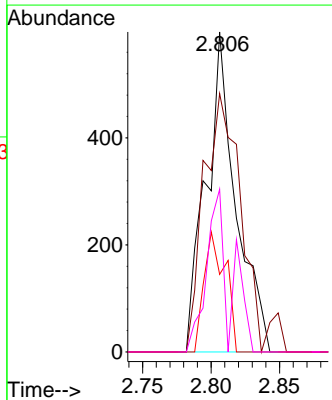
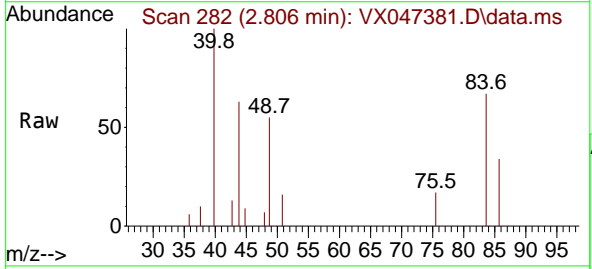
Instrument : MSVOA_X
 Client SampleId : TW-10P-W

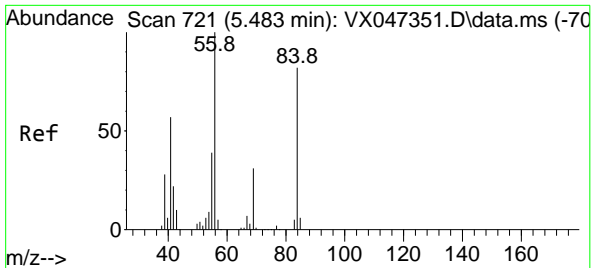
Tgt Ion	Resp	Lower	Upper
76	6025		
76	100		
78	9.3	7.2	10.8



#20
 Methylene Chloride
 Concen: 0.209 ug/l
 RT: 2.806 min Scan# 282
 Delta R.T. 0.000 min
 Lab File: VX047381.D
 Acq: 18 Aug 2025 14:53

Tgt Ion	Resp	Lower	Upper
84	903		
84	100		
49	80.8	100.1	150.1#
51	24.2	29.5	44.3#
86	50.8	51.8	77.8#

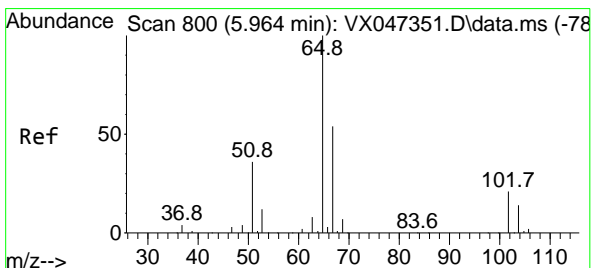
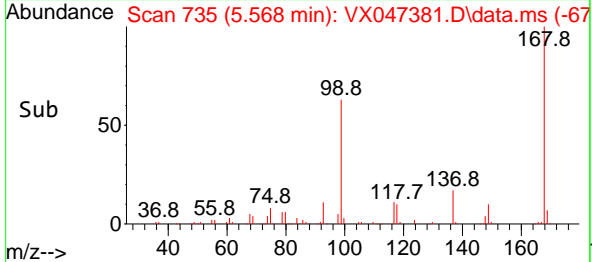
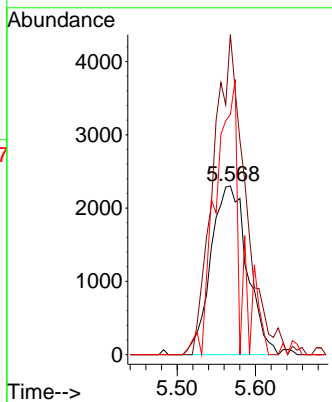
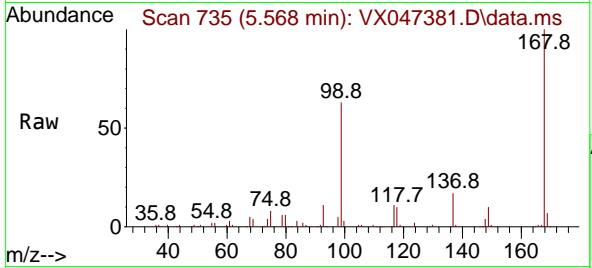




#31
 Cyclohexane
 Concen: 1.063 ug/l
 RT: 5.568 min Scan# 715
 Delta R.T. 0.085 min
 Lab File: VX047381.D
 Acq: 18 Aug 2025 14:53

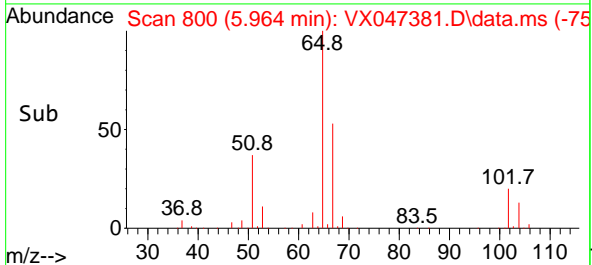
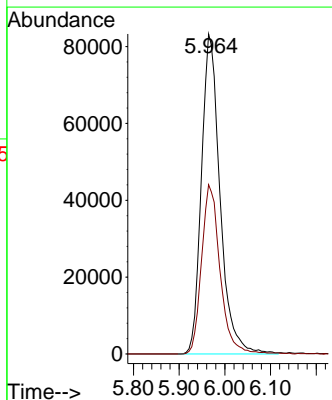
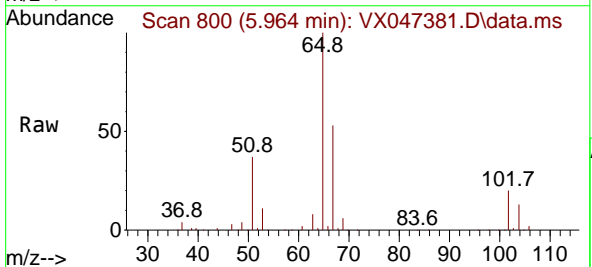
Instrument : MSVOA_X
 ClientSampleId : TW-10P-W

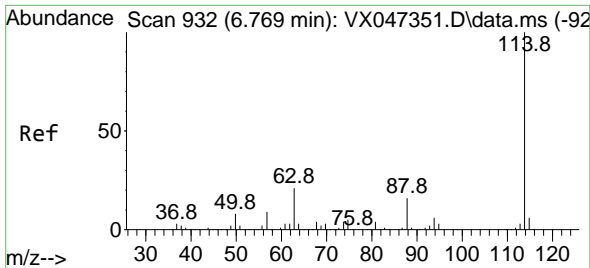
Tgt Ion: 56 Resp: 7415
 Ion Ratio Lower Upper
 56 100
 69 189.6 24.3 36.5#
 84 142.3 65.3 97.9#



#33
 1,2-Dichloroethane-d4
 Concen: 54.202 ug/l
 RT: 5.964 min Scan# 800
 Delta R.T. 0.000 min
 Lab File: VX047381.D
 Acq: 18 Aug 2025 14:53

Tgt Ion: 65 Resp: 234917
 Ion Ratio Lower Upper
 65 100
 67 52.8 0.0 106.0



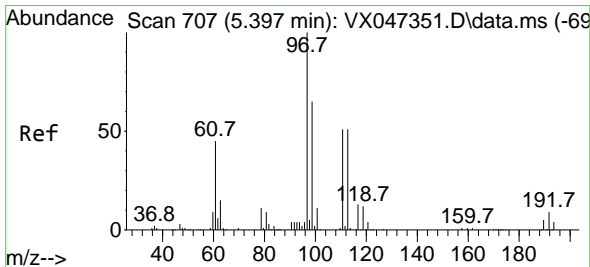
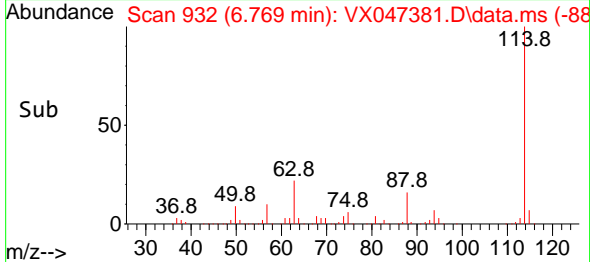
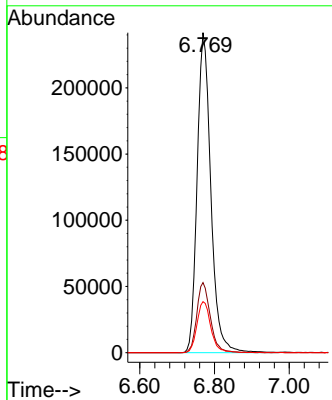
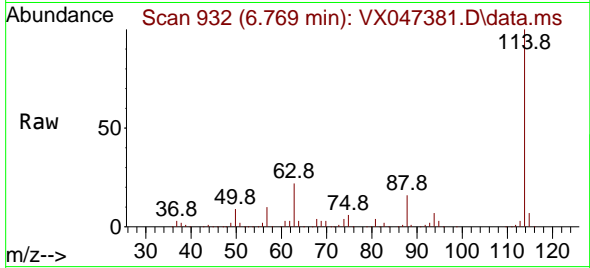


#34
 1,4-Difluorobenzene
 Concen: 50.000 ug/l
 RT: 6.769 min Scan# 91
 Delta R.T. 0.000 min
 Lab File: VX047381.D
 Acq: 18 Aug 2025 14:53

Instrument :
 MSVOA_X
 ClientSampleId :
 TW-10P-W

Tgt Ion:114 Resp: 613603

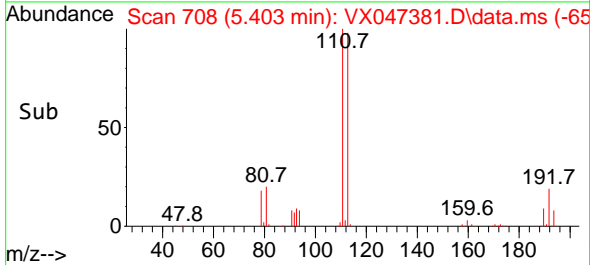
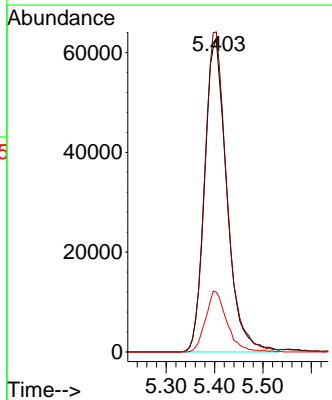
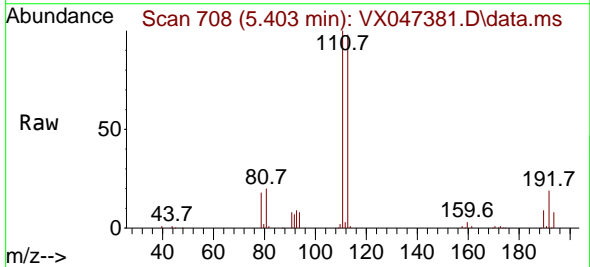
Ion	Ratio	Lower	Upper
114	100		
63	21.9	0.0	42.4
88	16.0	0.0	33.0

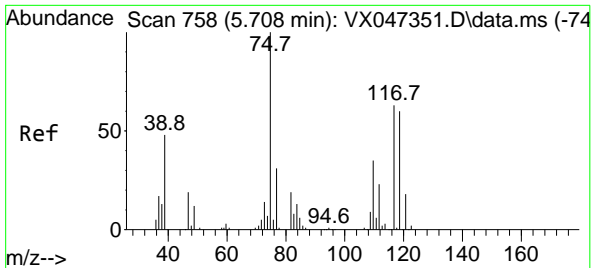


#35
 Dibromofluoromethane
 Concen: 50.194 ug/l
 RT: 5.403 min Scan# 708
 Delta R.T. 0.006 min
 Lab File: VX047381.D
 Acq: 18 Aug 2025 14:53

Tgt Ion:113 Resp: 199891

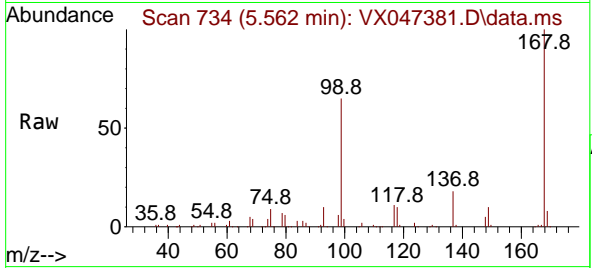
Ion	Ratio	Lower	Upper
113	100		
111	102.3	81.4	122.2
192	18.8	14.1	21.1



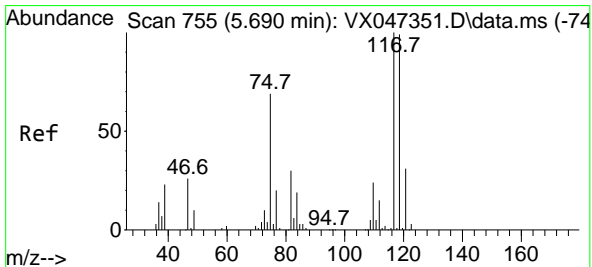
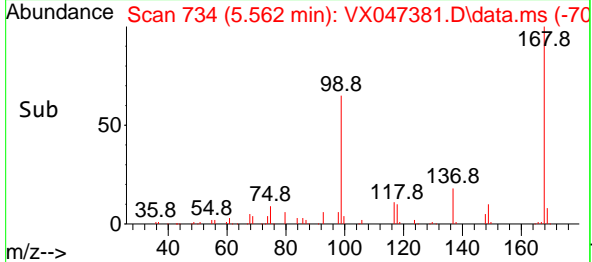
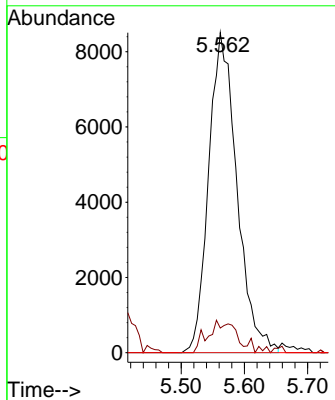


#36
 1,1-Dichloropropene
 Concen: 4.196 ug/l
 RT: 5.562 min Scan# 711
 Delta R.T. -0.146 min
 Lab File: VX047381.D
 Acq: 18 Aug 2025 14:53

Instrument : MSVOA_X
 ClientSampleId : TW-10P-W

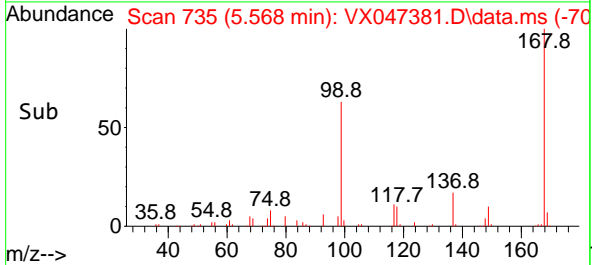
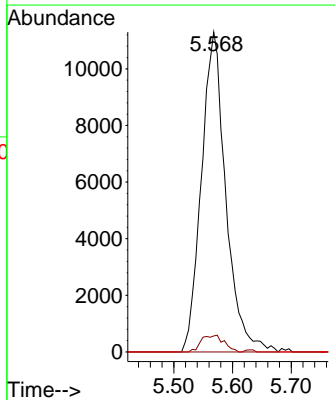
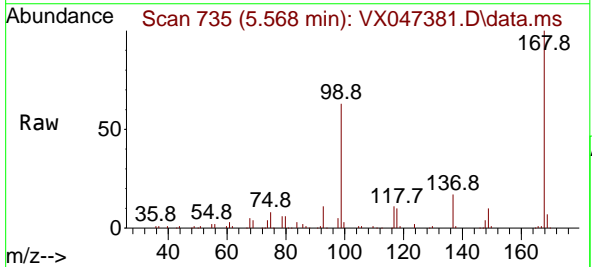


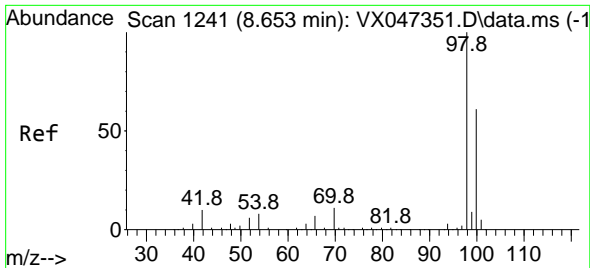
Tgt Ion: 75 Resp: 26377
 Ion Ratio Lower Upper
 75 100
 110 2.2 17.4 52.2#
 77 0.0 24.4 36.6#



#38
 Carbon Tetrachloride
 Concen: 4.753 ug/l
 RT: 5.568 min Scan# 735
 Delta R.T. -0.122 min
 Lab File: VX047381.D
 Acq: 18 Aug 2025 14:53

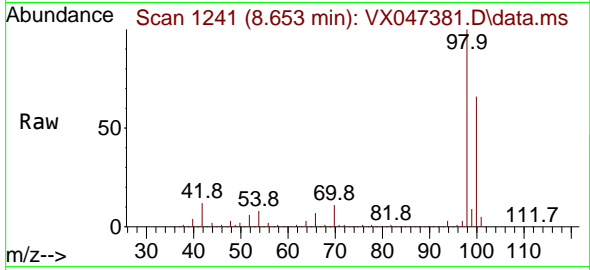
Tgt Ion: 117 Resp: 32649
 Ion Ratio Lower Upper
 117 100
 119 5.0 78.5 117.7#
 121 0.0 24.7 37.1#



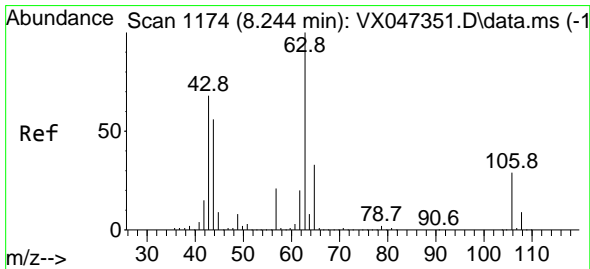
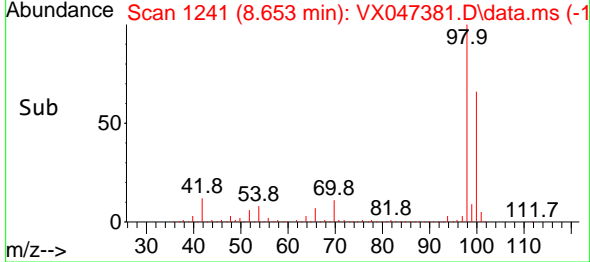
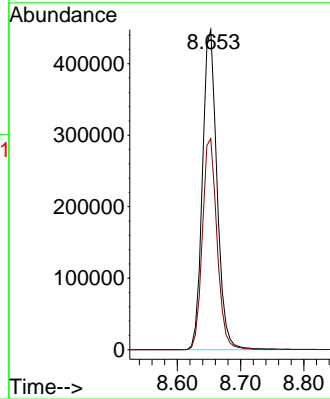


#50
 Toluene-d8
 Concen: 50.367 ug/l
 RT: 8.653 min Scan# 1186
 Delta R.T. 0.000 min
 Lab File: VX047381.D
 Acq: 18 Aug 2025 14:53

Instrument : MSVOA_X
 ClientSampleId : TW-10P-W

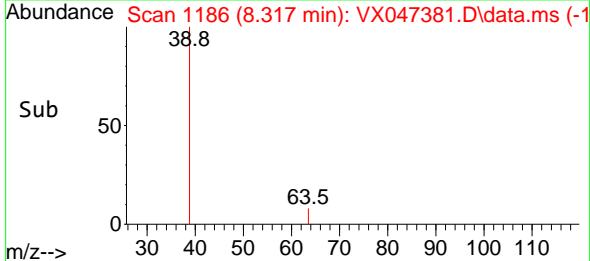
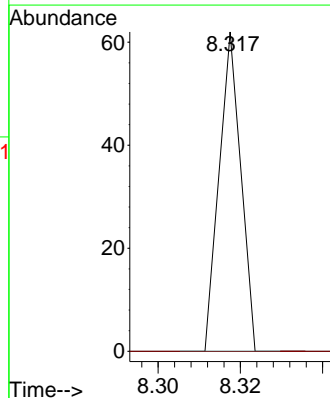
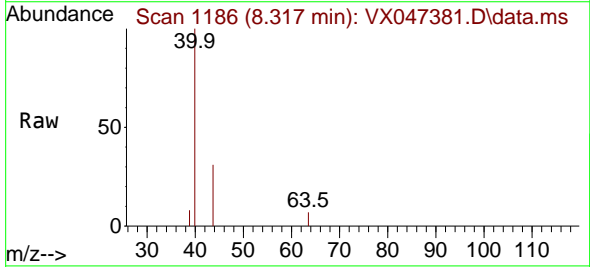


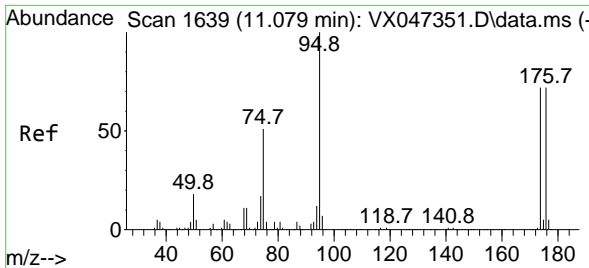
Tgt Ion: 98 Resp: 716925
 Ion Ratio Lower Upper
 98 100
 100 66.4 53.9 80.9



#58
 2-Chloroethyl Vinyl ether
 Concen: 8.362 ug/l
 RT: 8.317 min Scan# 1186
 Delta R.T. 0.073 min
 Lab File: VX047381.D
 Acq: 18 Aug 2025 14:53

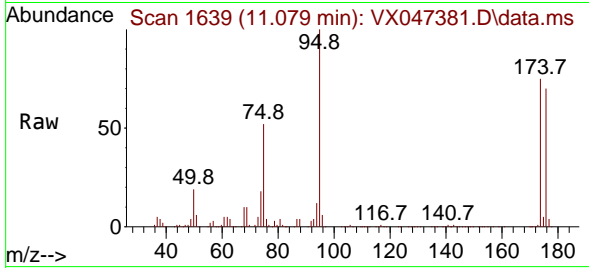
Tgt Ion: 63 Resp: 23
 Ion Ratio Lower Upper
 63 100
 106 0.0 22.8 34.2#



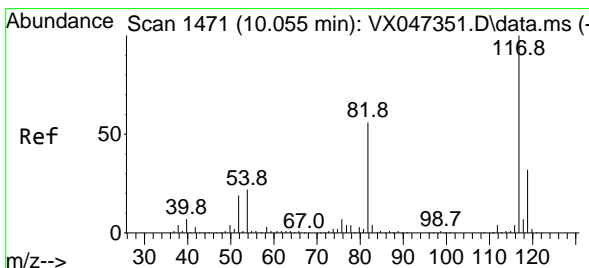
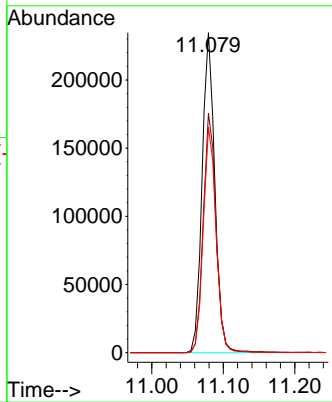
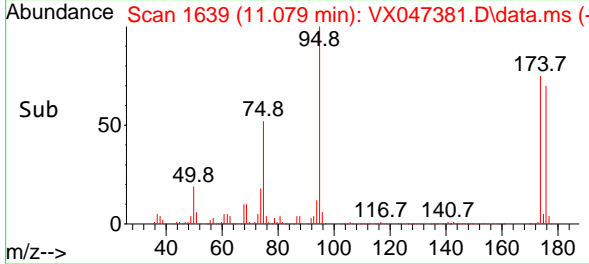


#62
 4-Bromofluorobenzene
 Concen: 55.051 ug/l
 RT: 11.079 min Scan# 1639
 Delta R.T. 0.000 min
 Lab File: VX047381.D
 Acq: 18 Aug 2025 14:53

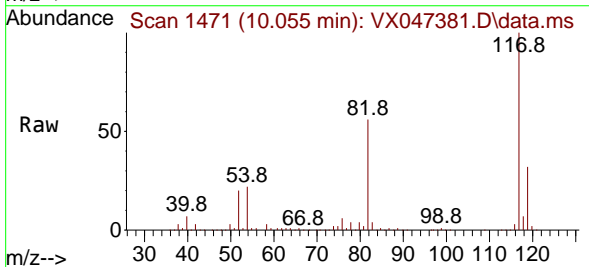
Instrument : MSVOA_X
 ClientSampleId : TW-10P-W



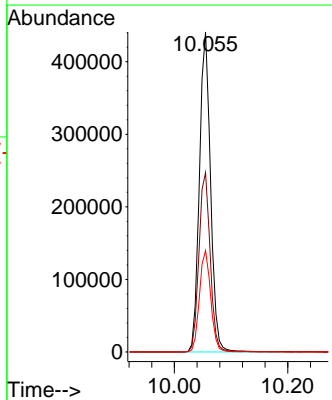
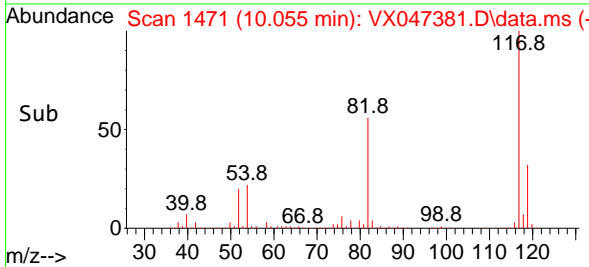
Tgt Ion: 95 Resp: 289159
 Ion Ratio Lower Upper
 95 100
 174 75.9 0.0 148.0
 176 71.3 0.0 145.4

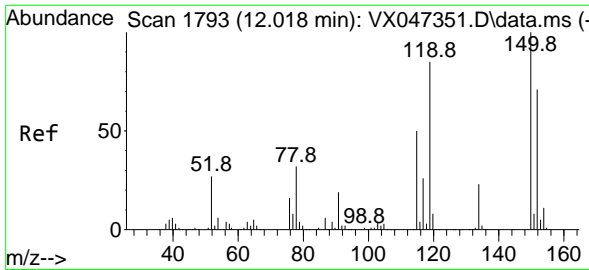


#63
 Chlorobenzene-d5
 Concen: 50.000 ug/l
 RT: 10.055 min Scan# 1471
 Delta R.T. 0.000 min
 Lab File: VX047381.D
 Acq: 18 Aug 2025 14:53



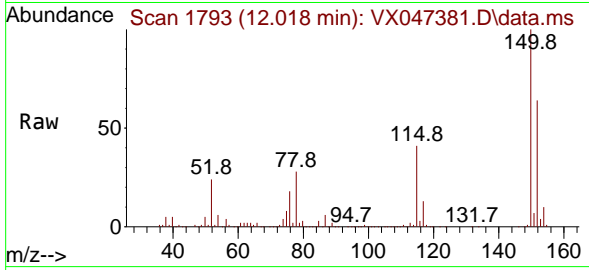
Tgt Ion: 117 Resp: 600484
 Ion Ratio Lower Upper
 117 100
 82 56.1 45.0 67.4
 119 31.7 25.8 38.8



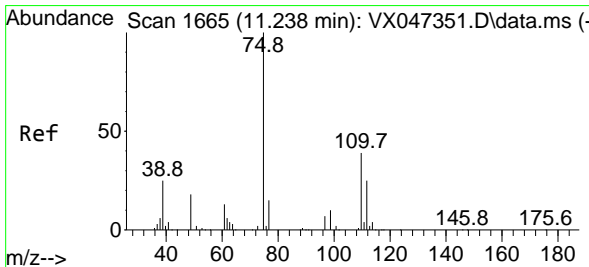
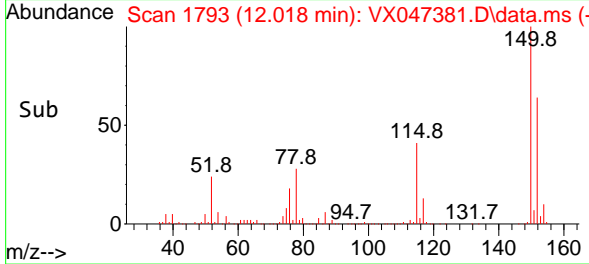
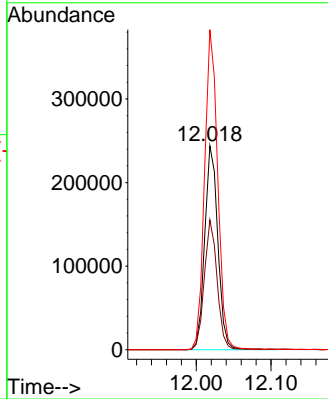


#72
 1,4-Dichlorobenzene-d4
 Concen: 50.000 ug/l
 RT: 12.018 min Scan# 1
 Delta R.T. 0.000 min
 Lab File: VX047381.D
 Acq: 18 Aug 2025 14:53

Instrument :
 MSVOA_X
 ClientSampleId :
 TW-10P-W

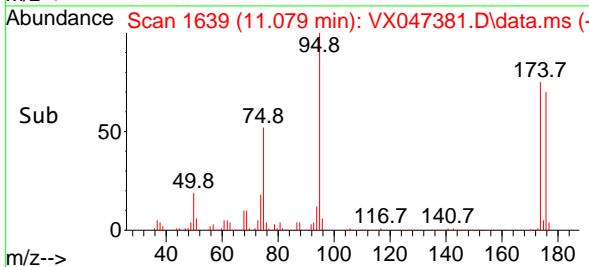
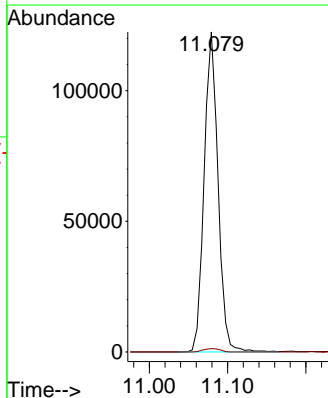
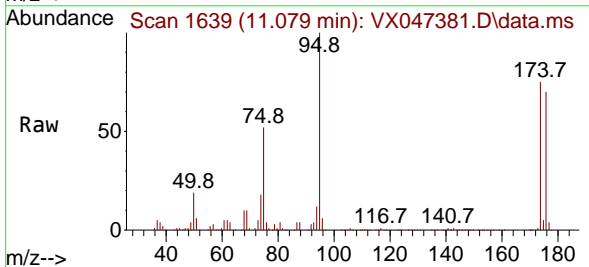


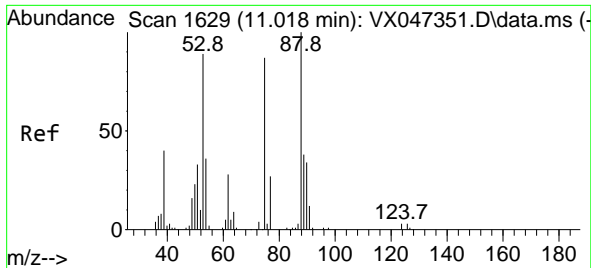
Tgt Ion:152 Resp: 297817
 Ion Ratio Lower Upper
 152 100
 115 62.1 44.6 133.8
 150 157.1 0.0 349.8



#76
 1,2,3-Trichloropropane
 Concen: 27.537 ug/l
 RT: 11.079 min Scan# 1639
 Delta R.T. -0.158 min
 Lab File: VX047381.D
 Acq: 18 Aug 2025 14:53

Tgt Ion: 75 Resp: 150415
 Ion Ratio Lower Upper
 75 100
 77 1.3 19.4 58.2#





#81
 trans-1,4-Dichloro-2-butene
 Concen: 108.735 ug/l
 RT: 11.079 min Scan# 1
 Delta R.T. 0.061 min
 Lab File: VX047381.D
 Acq: 18 Aug 2025 14:53

Instrument :
 MSVOA_X
 ClientSampleId :
 TW-10P-W

Tgt Ion: 75 Resp: 150415
 Ion Ratio Lower Upper
 75 100
 53 0.0 85.2 127.8#
 89 0.0 36.7 55.1#

