

Data Path : Z:\voasrv\HPCHEM1\MSVOA_X\Data\VX081825\
 Data File : VX047382.D
 Acq On : 18 Aug 2025 15:14
 Operator : JC/MD
 Sample : Q2815-06RE
 Misc : 5.0mL/MSVOA_X/WATER
 ALS Vial : 13 Sample Multiplier: 1

Instrument :
 MSVOA_X
 ClientSampleId :
 TW-10P-NRE

Quant Time: Aug 19 01:43:48 2025
 Quant Method : Z:\voasrv\HPCHEM1\MSVOA_X\Method\82X081525W.M
 Quant Title : SW846 8260
 QLast Update : Mon Aug 18 04:18:28 2025
 Response via : Initial Calibration

Compound	R.T.	QIon	Response	Conc	Units	Dev(Min)

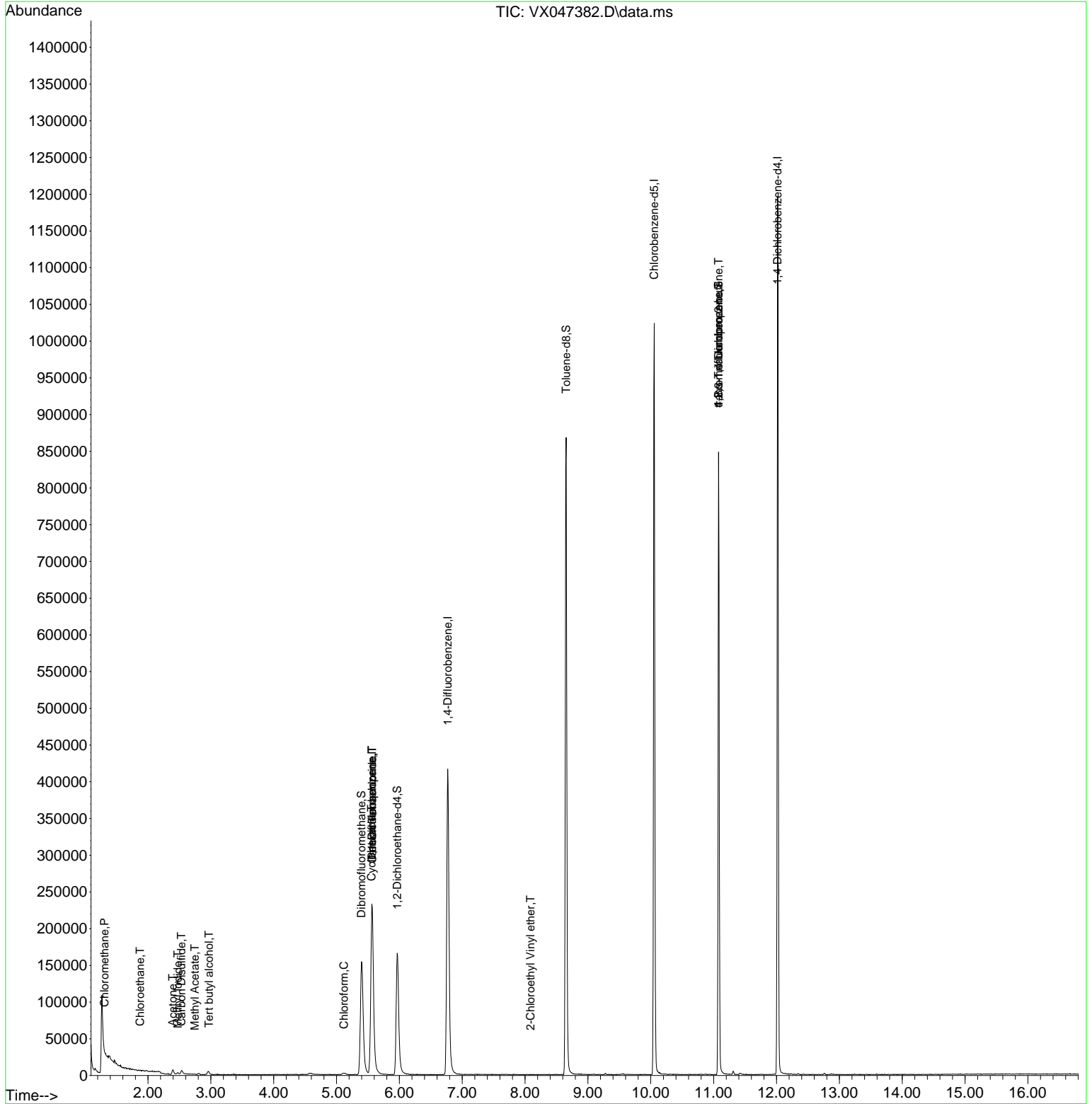
Internal Standards						
1) Pentafluorobenzene	5.562	168	232145	50.000	ug/l	0.00
34) 1,4-Difluorobenzene	6.769	114	447155	50.000	ug/l	0.00
63) Chlorobenzene-d5	10.055	117	455584	50.000	ug/l	0.00
72) 1,4-Dichlorobenzene-d4	12.018	152	236692	50.000	ug/l	0.00
System Monitoring Compounds						
33) 1,2-Dichloroethane-d4	5.964	65	177252	54.557	ug/l	0.00
Spiked Amount	50.000	Range 78 - 117	Recovery	=	109.120%	
35) Dibromofluoromethane	5.397	113	146545	50.497	ug/l	0.00
Spiked Amount	50.000	Range 75 - 124	Recovery	=	101.000%	
50) Toluene-d8	8.653	98	523865	50.504	ug/l	0.00
Spiked Amount	50.000	Range 92 - 112	Recovery	=	101.000%	
62) 4-Bromofluorobenzene	11.079	95	223111	58.288	ug/l	0.00
Spiked Amount	50.000	Range 83 - 123	Recovery	=	116.580%	
Target Compounds						
						Qvalue
3) Chloromethane	1.307	50	705	0.265	ug/l #	72
6) Chloroethane	1.874	64	768	0.376	ug/l #	79
10) Methyl Iodide	2.477	142	3205	0.652	ug/l #	93
11) Tert butyl alcohol	2.971	59	2297	8.127	ug/l #	72
16) Acetone	2.392	43	8786	7.194	ug/l	98
17) Carbon Disulfide	2.532	76	4913	0.557	ug/l #	94
18) Methyl Acetate	2.745	43	633	0.200	ug/l #	53
30) Chloroform	5.117	83	3048	0.527	ug/l	90
31) Cyclohexane	5.556	56	4781	0.914	ug/l #	1
36) 1,1-Dichloropropene	5.562	75	19549	4.267	ug/l #	50
38) Carbon Tetrachloride	5.568	117	24038	4.802	ug/l #	15
58) 2-Chloroethyl Vinyl ether	8.086	63	52	8.378	ug/l #	46
76) 1,2,3-Trichloropropane	11.079	75	116526	26.842	ug/l #	39
81) trans-1,4-Dichloro-2-b...	11.079	75	116526	106.189	ug/l #	7

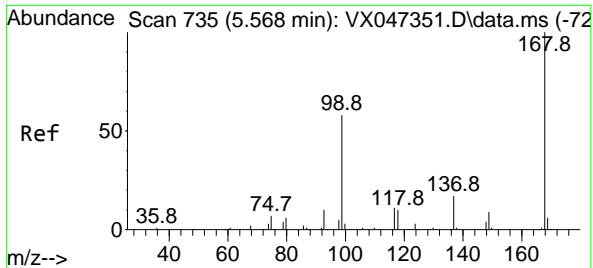
(#) = qualifier out of range (m) = manual integration (+) = signals summed

Data Path : Z:\voasrv\HPCHEM1\MSVOA_X\Data\VX081825\
 Data File : VX047382.D
 Acq On : 18 Aug 2025 15:14
 Operator : JC/MD
 Sample : Q2815-06RE
 Misc : 5.0mL/MSVOA_X/WATER
 ALS Vial : 13 Sample Multiplier: 1

Instrument :
 MSVOA_X
ClientSampleId :
 TW-10P-NRE

Quant Time: Aug 19 01:43:48 2025
 Quant Method : Z:\voasrv\HPCHEM1\MSVOA_X\Method\82X081525W.M
 Quant Title : SW846 8260
 QLast Update : Mon Aug 18 04:18:28 2025
 Response via : Initial Calibration

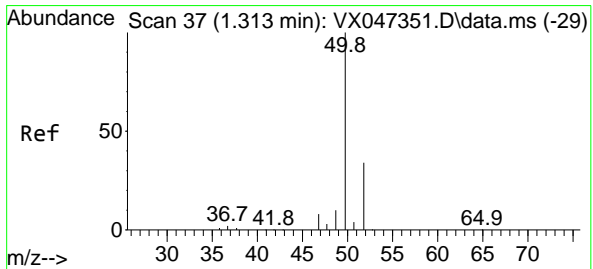
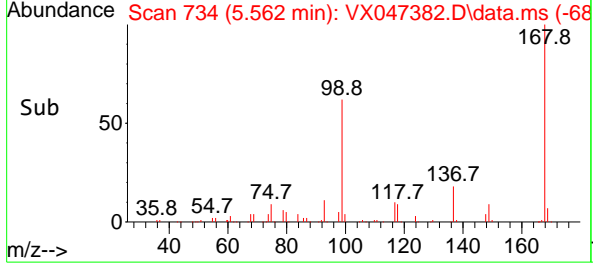
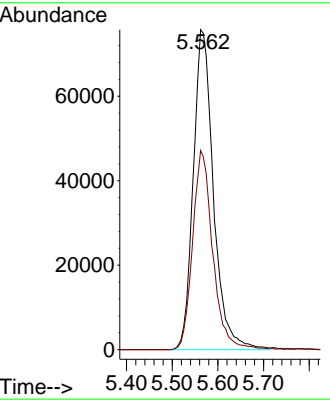
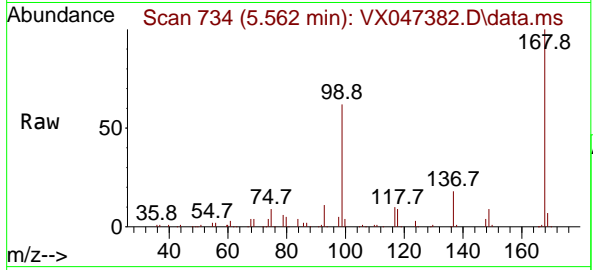




#1
 Pentafluorobenzene
 Concen: 50.000 ug/l
 RT: 5.562 min Scan# 71
 Delta R.T. -0.006 min
 Lab File: VX047382.D
 Acq: 18 Aug 2025 15:14

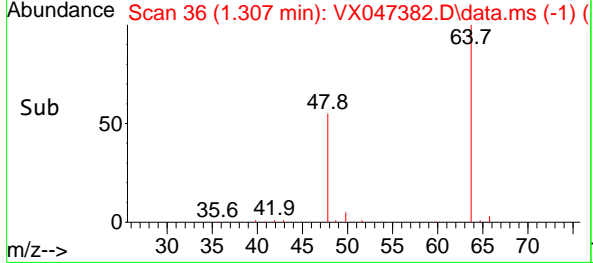
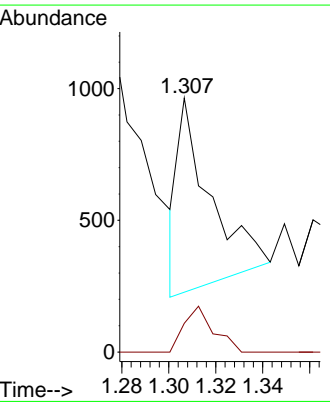
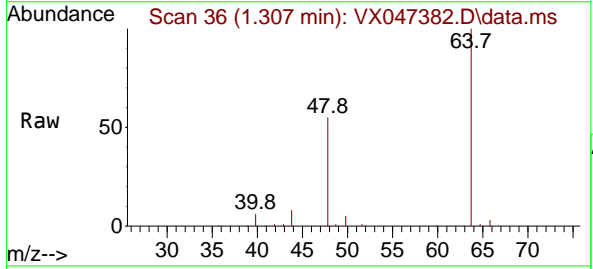
Instrument : MSVOA_X
 ClientSampleId : TW-10P-NRE

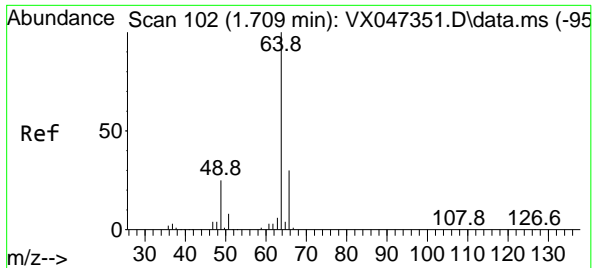
Tgt Ion:168 Resp: 232145
 Ion Ratio Lower Upper
 168 100
 99 62.2 47.9 71.9



#3
 Chloromethane
 Concen: 0.265 ug/l
 RT: 1.307 min Scan# 36
 Delta R.T. -0.006 min
 Lab File: VX047382.D
 Acq: 18 Aug 2025 15:14

Tgt Ion: 50 Resp: 705
 Ion Ratio Lower Upper
 50 100
 52 17.5 27.0 40.4#

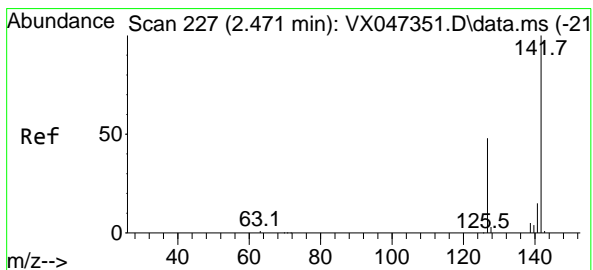
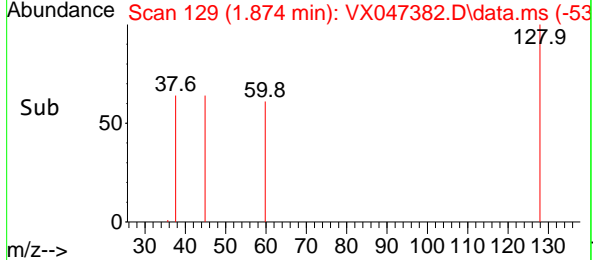
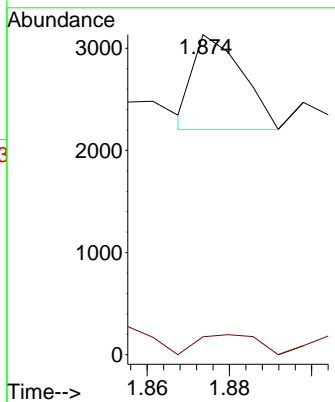
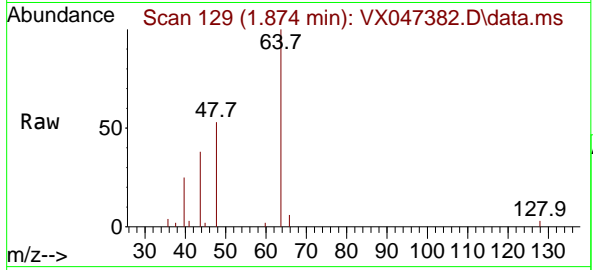




#6
 Chloroethane
 Concen: 0.376 ug/l
 RT: 1.874 min Scan# 11
 Delta R.T. 0.165 min
 Lab File: VX047382.D
 Acq: 18 Aug 2025 15:14

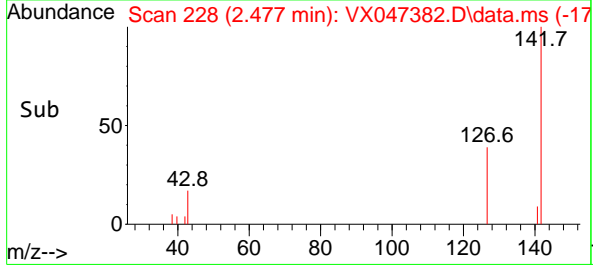
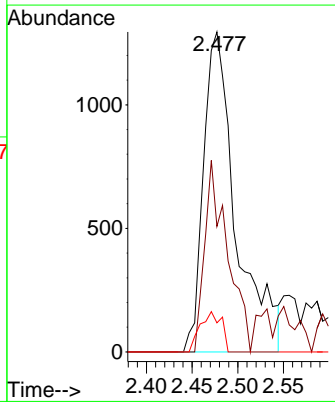
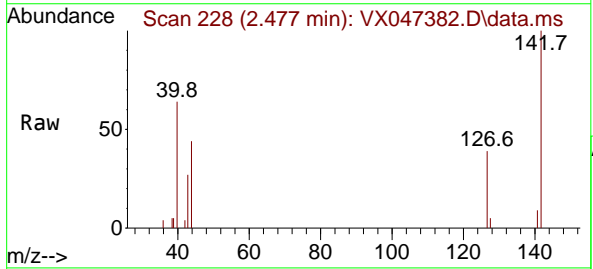
Instrument : MSVOA_X
 ClientSampleId : TW-10P-NRE

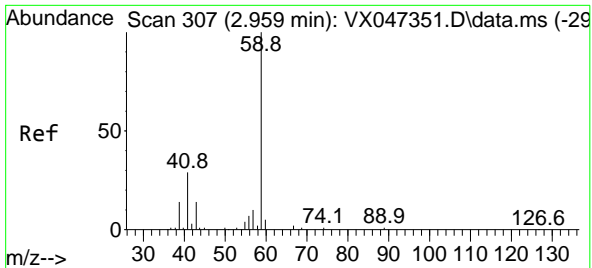
Tgt Ion: 64 Resp: 768
 Ion Ratio Lower Upper
 64 100
 66 19.0 24.4 36.6#



#10
 Methyl Iodide
 Concen: 0.652 ug/l
 RT: 2.477 min Scan# 228
 Delta R.T. 0.006 min
 Lab File: VX047382.D
 Acq: 18 Aug 2025 15:14

Tgt Ion:142 Resp: 3205
 Ion Ratio Lower Upper
 142 100
 127 41.8 36.1 54.1
 141 8.2 11.1 16.7#

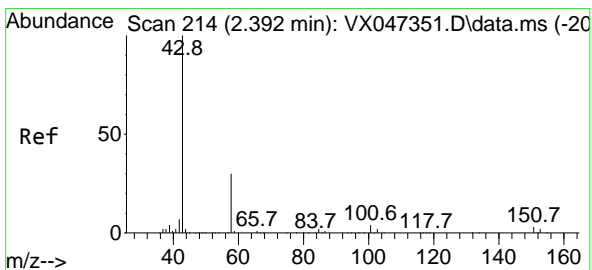
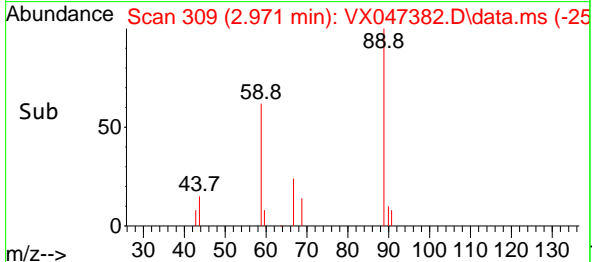
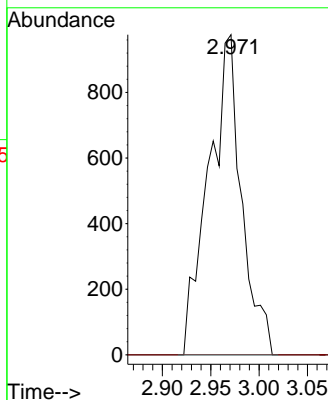
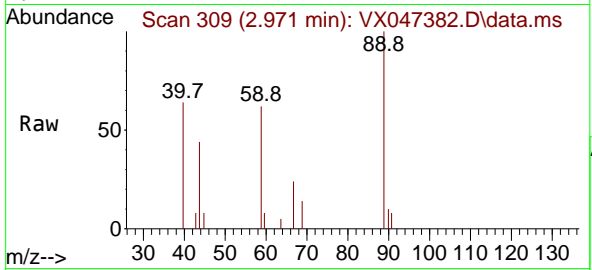




#11
 Tert butyl alcohol
 Concen: 8.127 ug/l
 RT: 2.971 min Scan# 30
 Delta R.T. 0.012 min
 Lab File: VX047382.D
 Acq: 18 Aug 2025 15:14

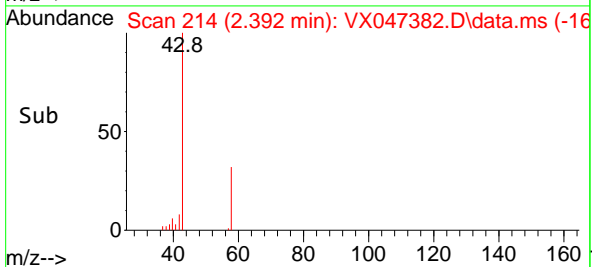
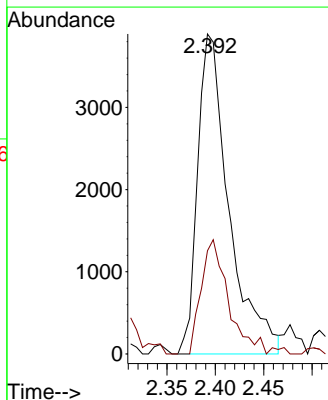
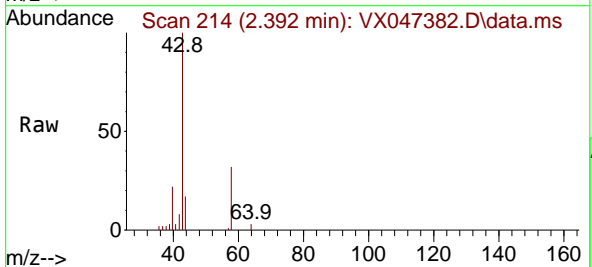
Instrument : MSVOA_X
 ClientSampleId : TW-10P-NRE

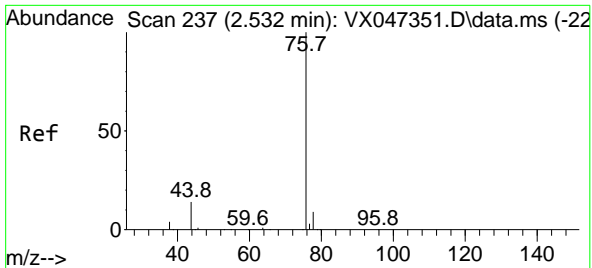
Tgt Ion: 59 Resp: 2297
 Ion Ratio Lower Upper
 59 100
 57 0.0 8.3 12.5#



#16
 Acetone
 Concen: 7.194 ug/l
 RT: 2.392 min Scan# 214
 Delta R.T. 0.000 min
 Lab File: VX047382.D
 Acq: 18 Aug 2025 15:14

Tgt Ion: 43 Resp: 8786
 Ion Ratio Lower Upper
 43 100
 58 32.3 24.8 37.2

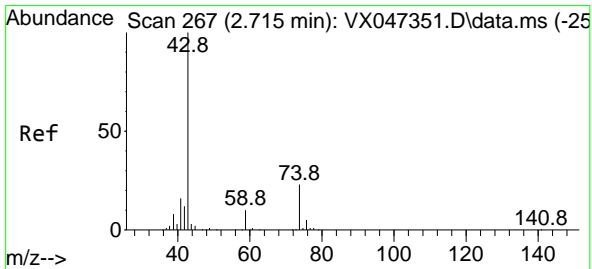
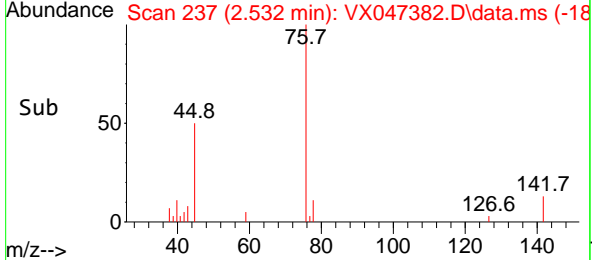
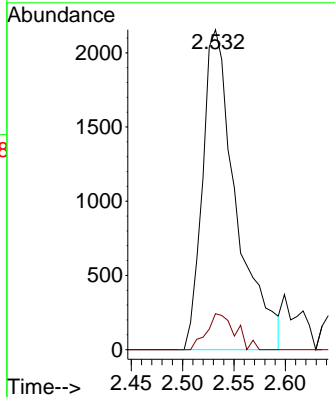
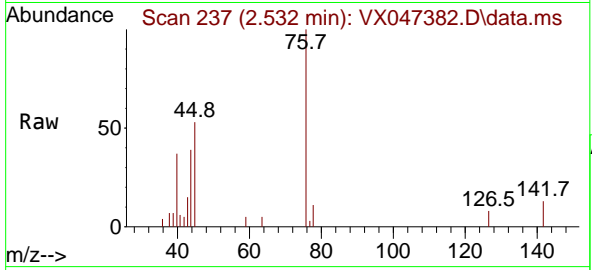




#17
 Carbon Disulfide
 Concen: 0.557 ug/l
 RT: 2.532 min Scan# 211
 Delta R.T. 0.000 min
 Lab File: VX047382.D
 Acq: 18 Aug 2025 15:14

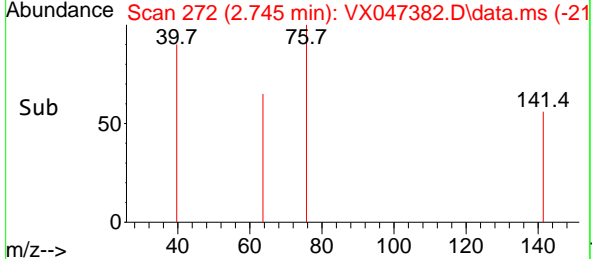
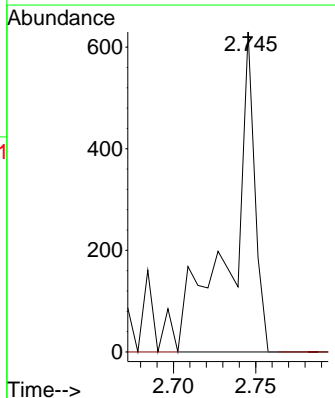
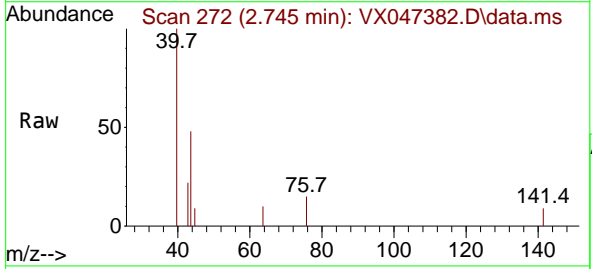
Instrument : MSVOA_X
 Client Sample Id : TW-10P-NRE

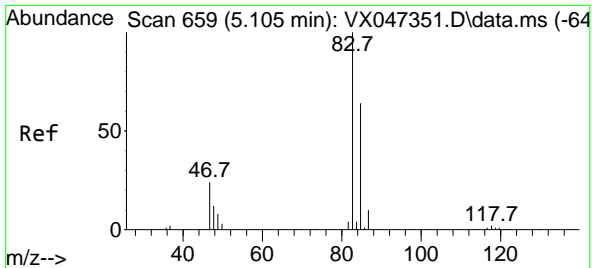
Tgt Ion: 76 Resp: 4913
 Ion Ratio Lower Upper
 76 100
 78 11.2 7.2 10.8#



#18
 Methyl Acetate
 Concen: 0.200 ug/l
 RT: 2.745 min Scan# 272
 Delta R.T. 0.031 min
 Lab File: VX047382.D
 Acq: 18 Aug 2025 15:14

Tgt Ion: 43 Resp: 633
 Ion Ratio Lower Upper
 43 100
 74 0.0 18.4 27.6#

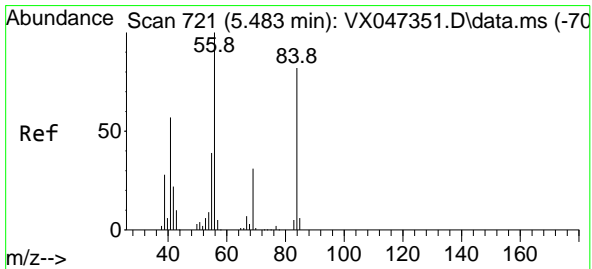
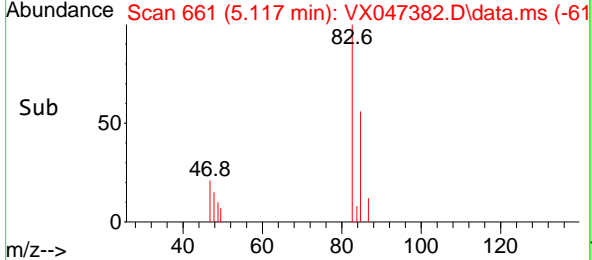
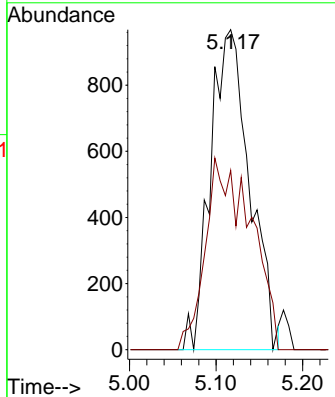
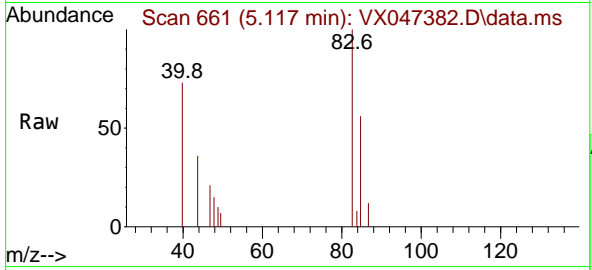




#30
 Chloroform
 Concen: 0.527 ug/l
 RT: 5.117 min Scan# 60
 Delta R.T. 0.012 min
 Lab File: VX047382.D
 Acq: 18 Aug 2025 15:14

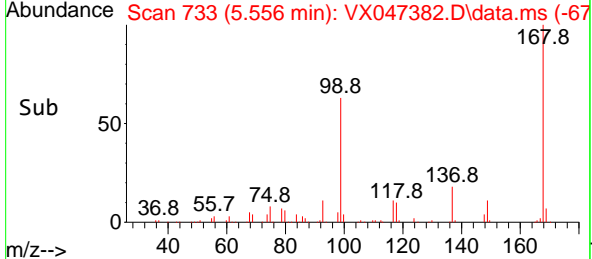
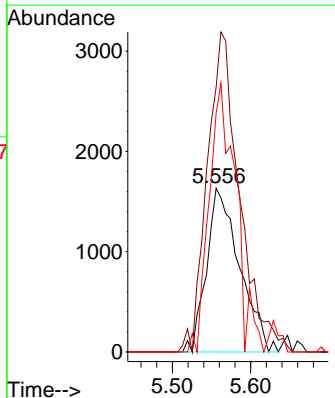
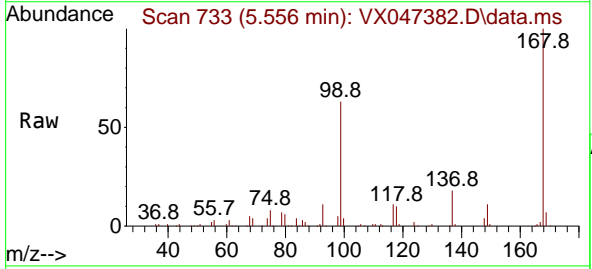
Instrument : MSVOA_X
 ClientSampleId : TW-10P-NRE

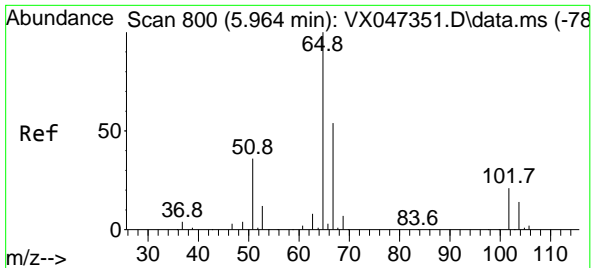
Tgt Ion: 83 Resp: 3048
 Ion Ratio Lower Upper
 83 100
 85 56.0 51.2 76.8



#31
 Cyclohexane
 Concen: 0.914 ug/l
 RT: 5.556 min Scan# 733
 Delta R.T. 0.073 min
 Lab File: VX047382.D
 Acq: 18 Aug 2025 15:14

Tgt Ion: 56 Resp: 4781
 Ion Ratio Lower Upper
 56 100
 69 161.9 24.3 36.5#
 84 145.9 65.3 97.9#

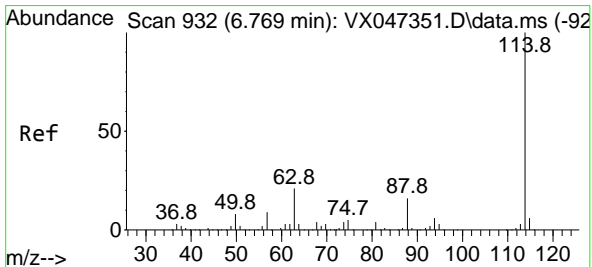
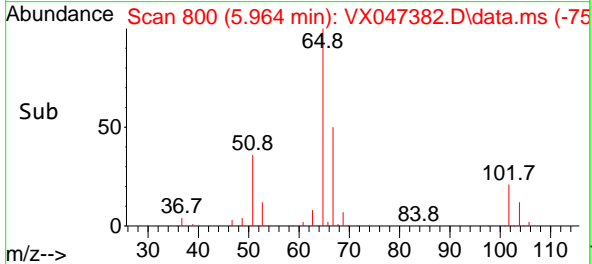
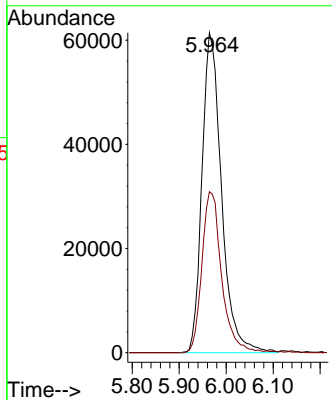
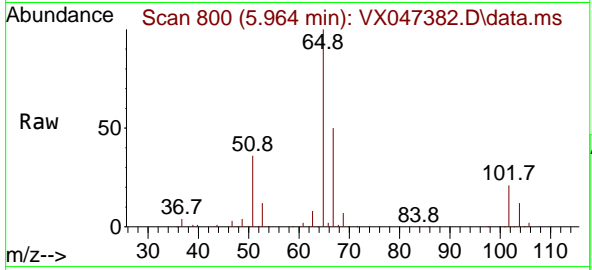




#33
 1,2-Dichloroethane-d4
 Concen: 54.557 ug/l
 RT: 5.964 min Scan# 800
 Delta R.T. 0.000 min
 Lab File: VX047382.D
 Acq: 18 Aug 2025 15:14

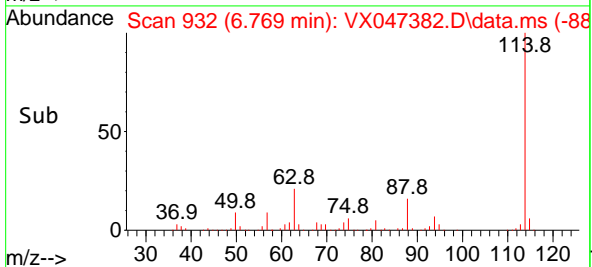
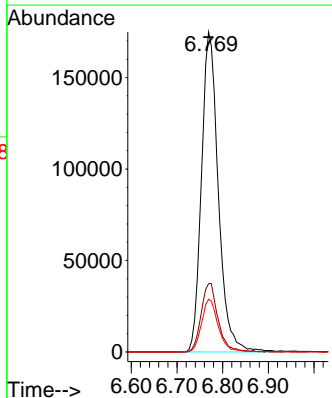
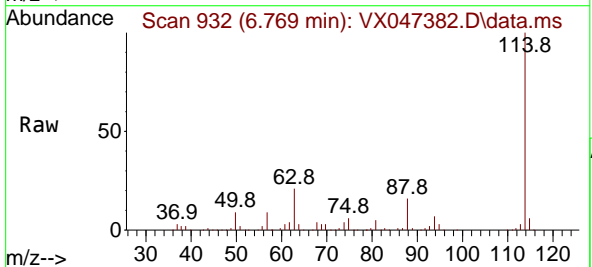
Instrument :
 MSVOA_X
 ClientSampleId :
 TW-10P-NRE

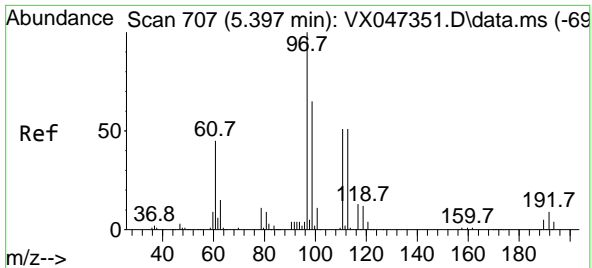
Tgt Ion: 65 Resp: 177252
 Ion Ratio Lower Upper
 65 100
 67 51.0 0.0 106.0



#34
 1,4-Difluorobenzene
 Concen: 50.000 ug/l
 RT: 6.769 min Scan# 932
 Delta R.T. 0.000 min
 Lab File: VX047382.D
 Acq: 18 Aug 2025 15:14

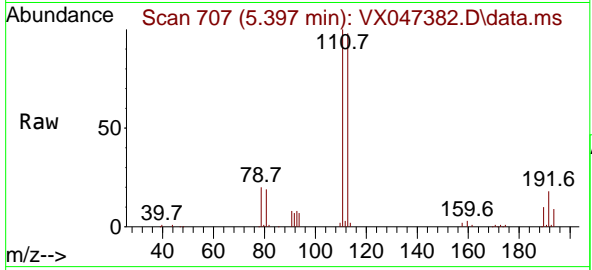
Tgt Ion: 114 Resp: 447155
 Ion Ratio Lower Upper
 114 100
 63 21.3 0.0 42.4
 88 16.5 0.0 33.0





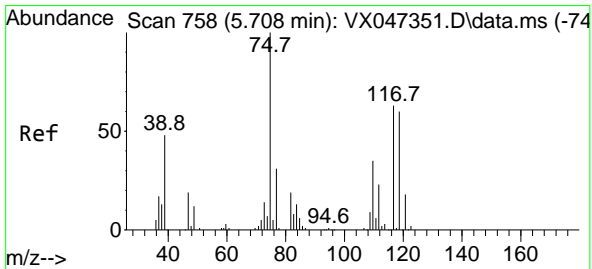
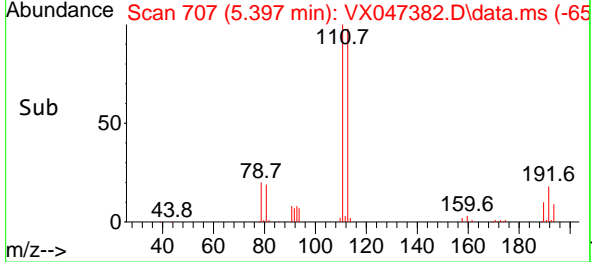
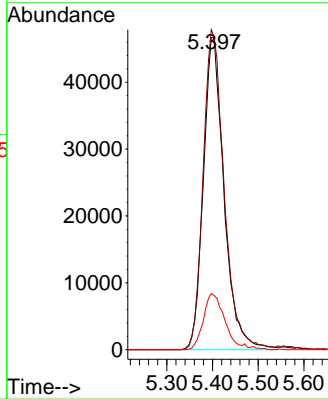
#35
 Dibromofluoromethane
 Concen: 50.497 ug/l
 RT: 5.397 min Scan# 707
 Delta R.T. 0.000 min
 Lab File: VX047382.D
 Acq: 18 Aug 2025 15:14

Instrument : MSVOA_X
 ClientSampleId : TW-10P-NRE

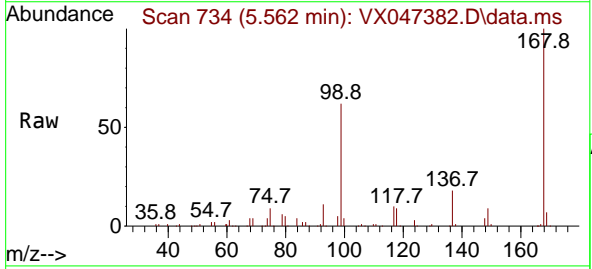


Tgt Ion: 113 Resp: 146545

Ion	Ratio	Lower	Upper
113	100		
111	104.3	81.4	122.2
192	18.9	14.1	21.1

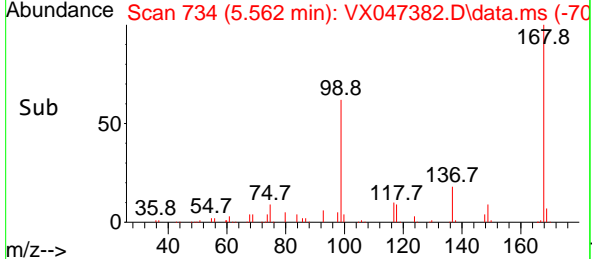
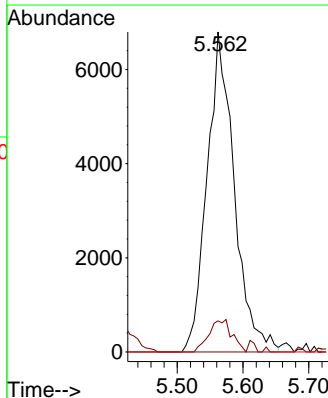


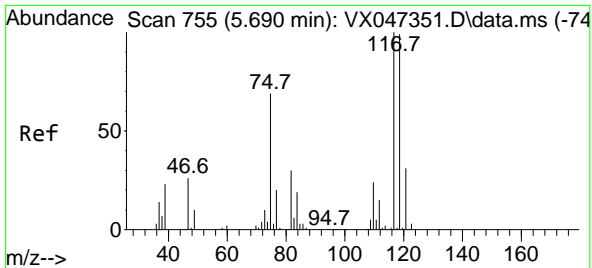
#36
 1,1-Dichloropropene
 Concen: 4.267 ug/l
 RT: 5.562 min Scan# 734
 Delta R.T. -0.146 min
 Lab File: VX047382.D
 Acq: 18 Aug 2025 15:14



Tgt Ion: 75 Resp: 19549

Ion	Ratio	Lower	Upper
75	100		
110	8.5	17.4	52.2#
77	0.0	24.4	36.6#



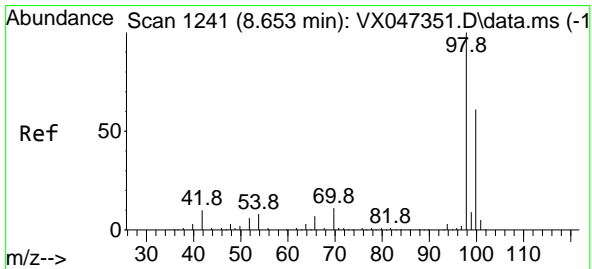
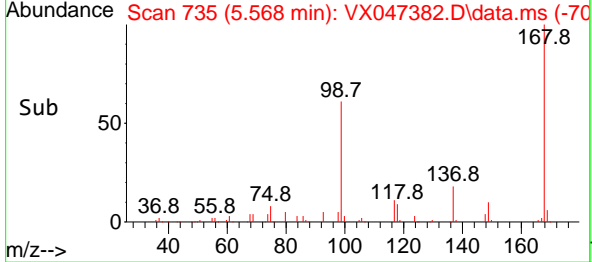
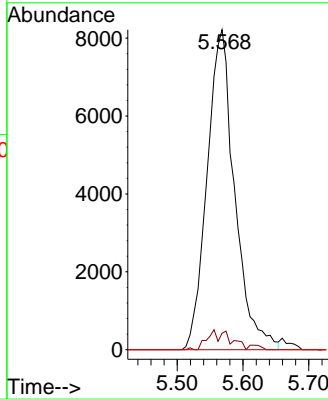
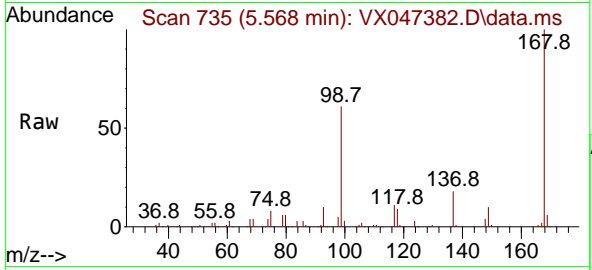


#38
 Carbon Tetrachloride
 Concen: 4.802 ug/l
 RT: 5.568 min Scan# 71
 Delta R.T. -0.122 min
 Lab File: VX047382.D
 Acq: 18 Aug 2025 15:14

Instrument :
 MSVOA_X
 ClientSampleId :
 TW-10P-NRE

Tgt Ion:117 Resp: 24038

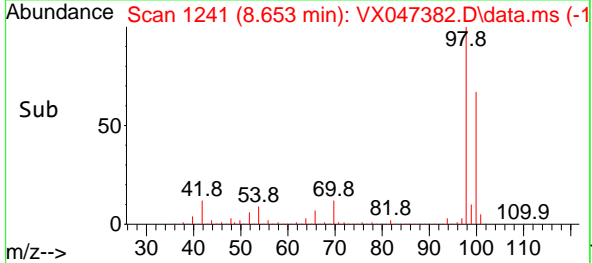
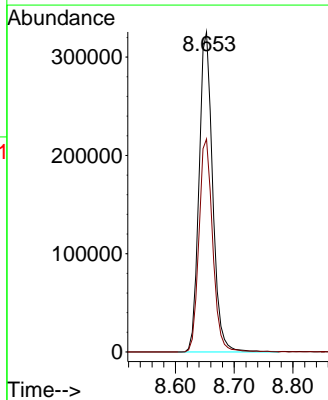
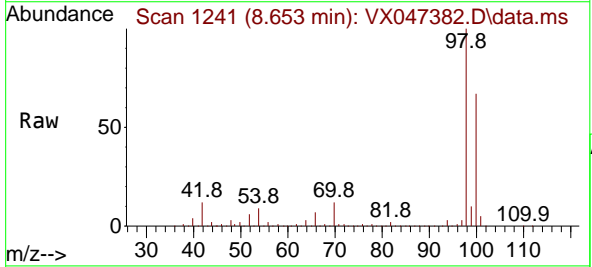
Ion	Ratio	Lower	Upper
117	100		
119	5.1	78.5	117.7#
121	0.0	24.7	37.1#

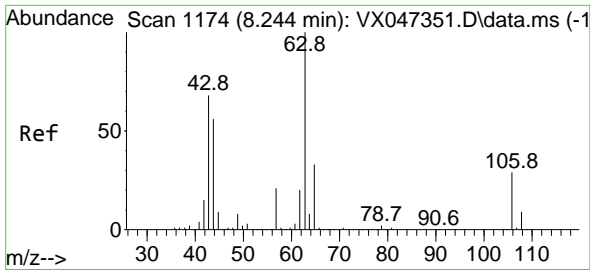


#50
 Toluene-d8
 Concen: 50.504 ug/l
 RT: 8.653 min Scan# 1241
 Delta R.T. 0.000 min
 Lab File: VX047382.D
 Acq: 18 Aug 2025 15:14

Tgt Ion: 98 Resp: 523865

Ion	Ratio	Lower	Upper
98	100		
100	67.2	53.9	80.9

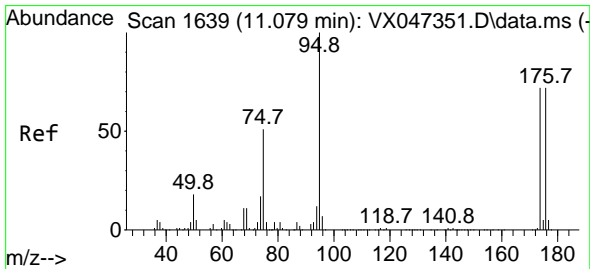
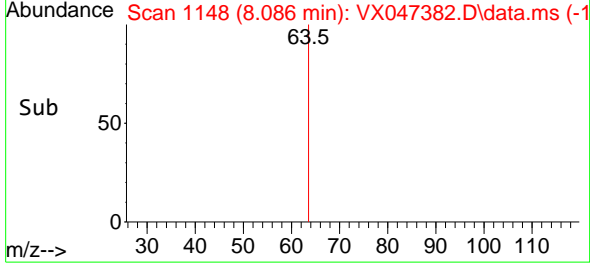
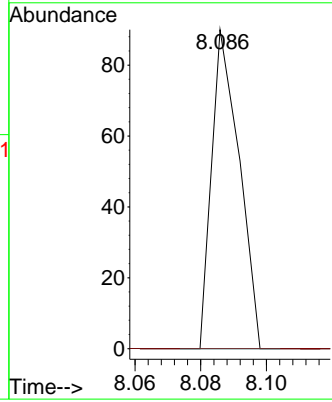
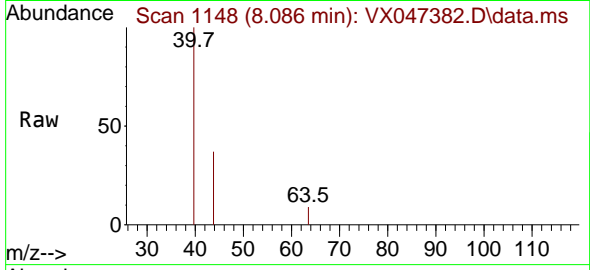




#58
 2-Chloroethyl Vinyl ether
 Concen: 8.378 ug/l
 RT: 8.086 min Scan# 1114
 Delta R.T. -0.158 min
 Lab File: VX047382.D
 Acq: 18 Aug 2025 15:14

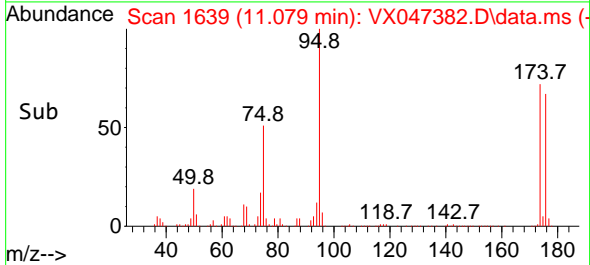
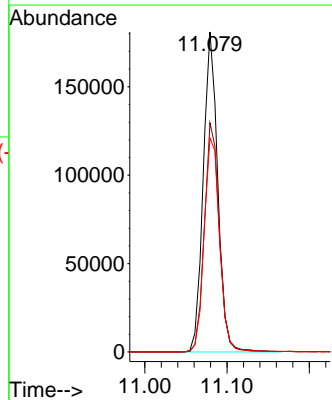
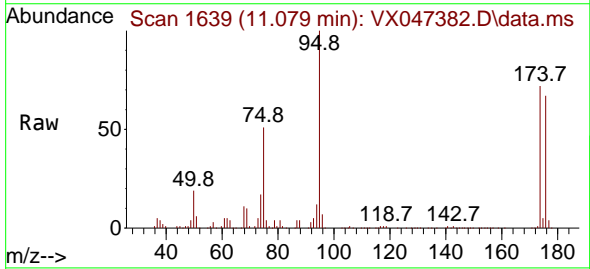
Instrument : MSVOA_X
 ClientSampleId : TW-10P-NRE

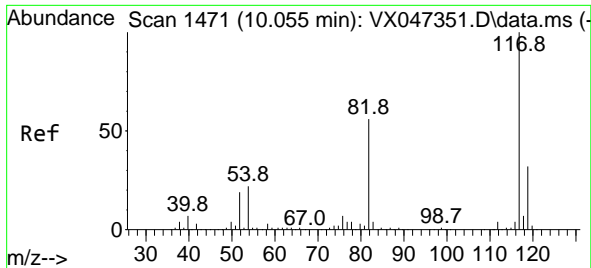
Tgt Ion: 63 Resp: 52
 Ion Ratio Lower Upper
 63 100
 106 0.0 22.8 34.2#



#62
 4-Bromofluorobenzene
 Concen: 58.288 ug/l
 RT: 11.079 min Scan# 1639
 Delta R.T. 0.000 min
 Lab File: VX047382.D
 Acq: 18 Aug 2025 15:14

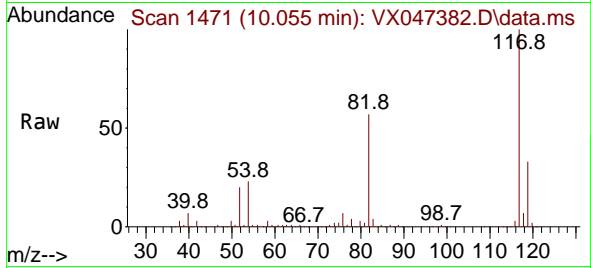
Tgt Ion: 95 Resp: 223111
 Ion Ratio Lower Upper
 95 100
 174 73.5 0.0 148.0
 176 71.1 0.0 145.4





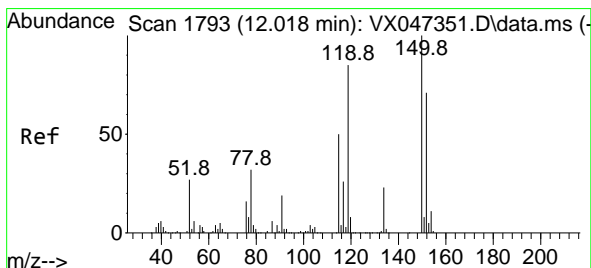
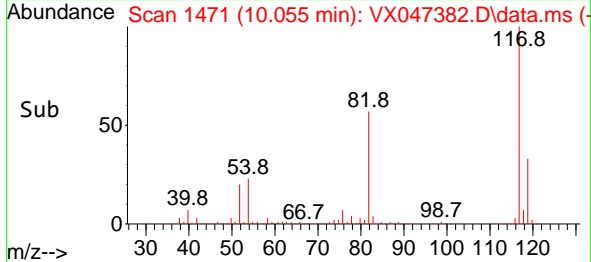
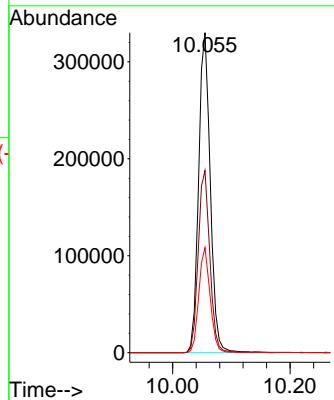
#63
 Chlorobenzene-d5
 Concen: 50.000 ug/l
 RT: 10.055 min Scan# 14
 Delta R.T. 0.000 min
 Lab File: VX047382.D
 Acq: 18 Aug 2025 15:14

Instrument :
 MSVOA_X
 ClientSampleId :
 TW-10P-NRE



Tgt Ion:117 Resp: 455584

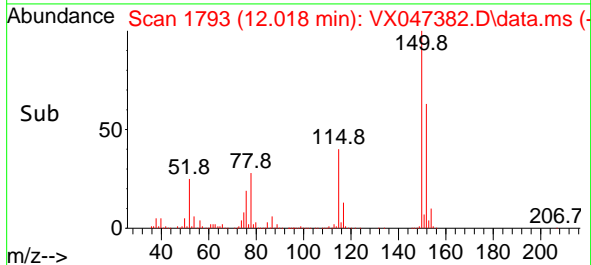
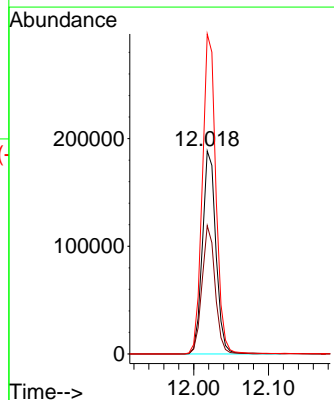
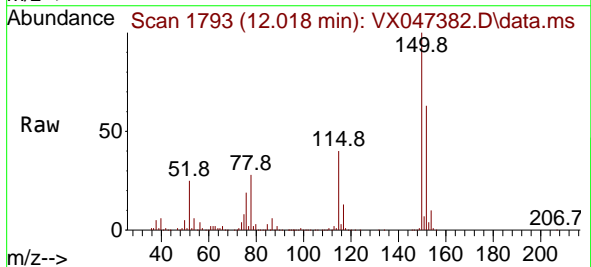
Ion	Ratio	Lower	Upper
117	100		
82	56.9	45.0	67.4
119	32.8	25.8	38.8

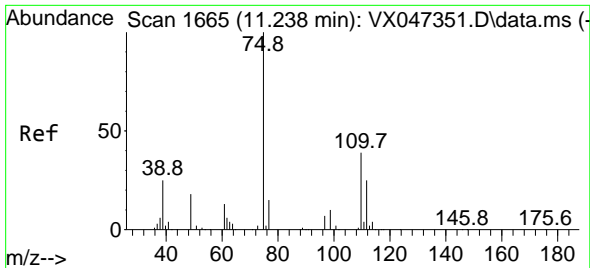


#72
 1,4-Dichlorobenzene-d4
 Concen: 50.000 ug/l
 RT: 12.018 min Scan# 1793
 Delta R.T. 0.000 min
 Lab File: VX047382.D
 Acq: 18 Aug 2025 15:14

Tgt Ion:152 Resp: 236692

Ion	Ratio	Lower	Upper
152	100		
115	61.5	44.6	133.8
150	158.1	0.0	349.8

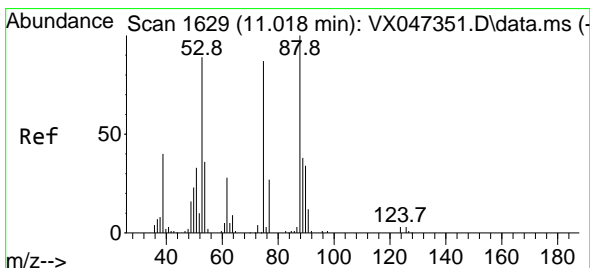
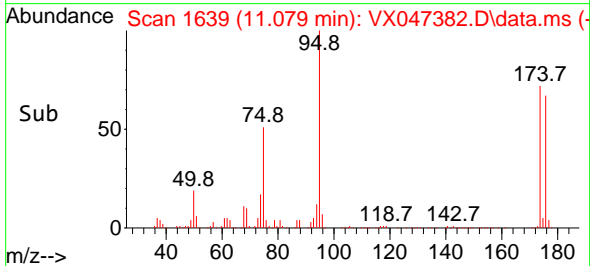
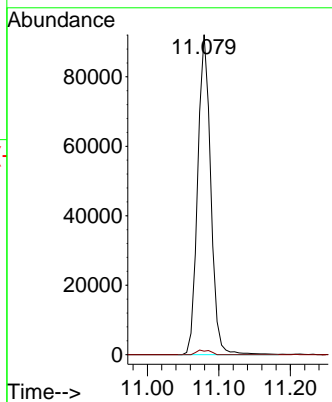
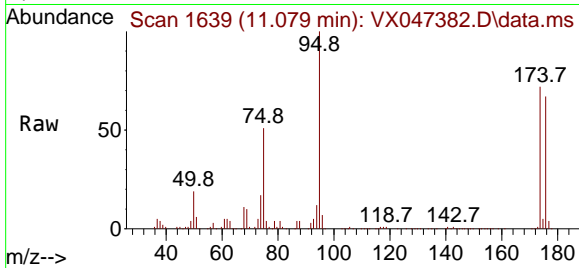




#76
 1,2,3-Trichloropropane
 Concen: 26.842 ug/l
 RT: 11.079 min Scan# 1639
 Delta R.T. -0.158 min
 Lab File: VX047382.D
 Acq: 18 Aug 2025 15:14

Instrument : MSVOA_X
 ClientSampleId : TW-10P-NRE

Tgt Ion: 75 Resp: 116526
 Ion Ratio Lower Upper
 75 100
 77 1.5 19.4 58.2#



#81
 trans-1,4-Dichloro-2-butene
 Concen: 106.189 ug/l
 RT: 11.079 min Scan# 1639
 Delta R.T. 0.061 min
 Lab File: VX047382.D
 Acq: 18 Aug 2025 15:14

Tgt Ion: 75 Resp: 116526
 Ion Ratio Lower Upper
 75 100
 53 0.0 85.2 127.8#
 89 0.0 36.7 55.1#

