

Data Path : Z:\voasrv\HPCHEM1\MSVOA_X\Data\VX081825\
 Data File : VX047383.D
 Acq On : 18 Aug 2025 15:35
 Operator : JC/MD
 Sample : Q2815-08RE
 Misc : 5.0mL/MSVOA_X/WATER
 ALS Vial : 14 Sample Multiplier: 1

Instrument :
 MSVOA_X
 ClientSampleId :
 TW-88H-N

Quant Time: Aug 19 01:44:14 2025
 Quant Method : Z:\voasrv\HPCHEM1\MSVOA_X\Method\82X081525W.M
 Quant Title : SW846 8260
 QLast Update : Mon Aug 18 04:18:28 2025
 Response via : Initial Calibration

Compound	R.T.	QIon	Response	Conc	Units	Dev(Min)

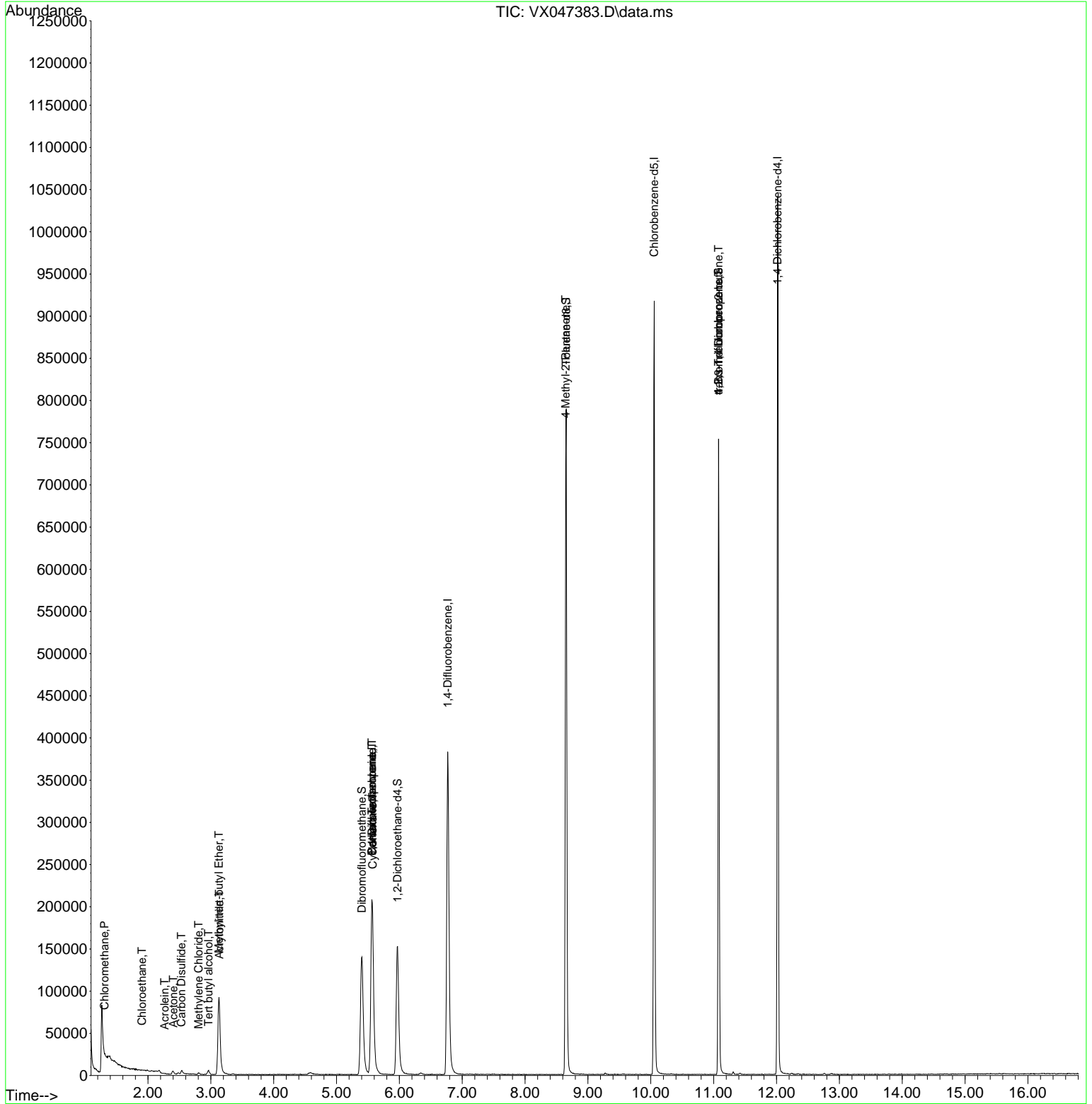
Internal Standards						
1) Pentafluorobenzene	5.562	168	210172	50.000	ug/l	0.00
34) 1,4-Difluorobenzene	6.769	114	408314	50.000	ug/l	0.00
63) Chlorobenzene-d5	10.055	117	407032	50.000	ug/l	0.00
72) 1,4-Dichlorobenzene-d4	12.018	152	209517	50.000	ug/l	0.00
System Monitoring Compounds						
33) 1,2-Dichloroethane-d4	5.970	65	159813	54.332	ug/l	0.00
Spiked Amount	50.000	Range 78 - 117	Recovery	=	108.660%	
35) Dibromofluoromethane	5.404	113	135188	51.014	ug/l	0.00
Spiked Amount	50.000	Range 75 - 124	Recovery	=	102.020%	
50) Toluene-d8	8.653	98	480604	50.741	ug/l	0.00
Spiked Amount	50.000	Range 92 - 112	Recovery	=	101.480%	
62) 4-Bromofluorobenzene	11.079	95	199196	56.990	ug/l	0.00
Spiked Amount	50.000	Range 83 - 123	Recovery	=	113.980%	
Target Compounds						
						Qvalue
3) Chloromethane	1.307	50	731	0.303	ug/l #	77
6) Chloroethane	1.904	64	1297	0.701	ug/l #	46
11) Tert butyl alcohol	2.965	59	2408	9.410	ug/l #	72
13) Acrolein	2.264	56	170	0.315	ug/l #	33
15) Acrylonitrile	3.136	53	1352	1.093	ug/l #	45
16) Acetone	2.404	43	5829	5.272	ug/l	89
17) Carbon Disulfide	2.532	76	3861	0.484	ug/l #	75
19) Methyl tert-butyl Ether	3.130	73	108594	13.489	ug/l	98
20) Methylene Chloride	2.806	84	860	0.294	ug/l #	88
31) Cyclohexane	5.574	56	4530	0.957	ug/l #	1
36) 1,1-Dichloropropene	5.562	75	17934	4.287	ug/l #	50
38) Carbon Tetrachloride	5.562	117	21915	4.794	ug/l #	13
51) 4-Methyl-2-Pentanone	8.647	43	2423	0.675	ug/l #	1
76) 1,2,3-Trichloropropane	11.079	75	102359	26.637	ug/l #	38
81) trans-1,4-Dichloro-2-b...	11.079	75	102359	105.437	ug/l #	7

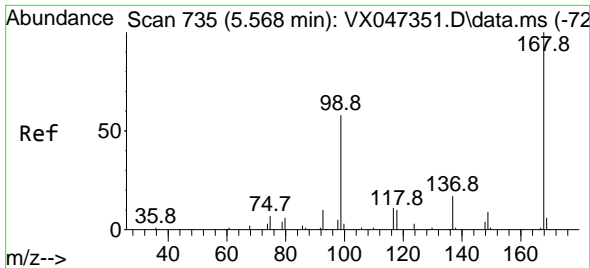
(#) = qualifier out of range (m) = manual integration (+) = signals summed

Data Path : Z:\voasrv\HPCHEM1\MSVOA_X\Data\VX081825\
 Data File : VX047383.D
 Acq On : 18 Aug 2025 15:35
 Operator : JC/MD
 Sample : Q2815-08RE
 Misc : 5.0mL/MSVOA_X/WATER
 ALS Vial : 14 Sample Multiplier: 1

Instrument :
 MSVOA_X
 ClientSampleId :
 TW-88H-N

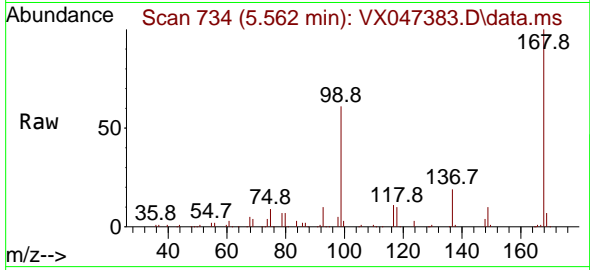
Quant Time: Aug 19 01:44:14 2025
 Quant Method : Z:\voasrv\HPCHEM1\MSVOA_X\Method\82X081525W.M
 Quant Title : SW846 8260
 QLast Update : Mon Aug 18 04:18:28 2025
 Response via : Initial Calibration



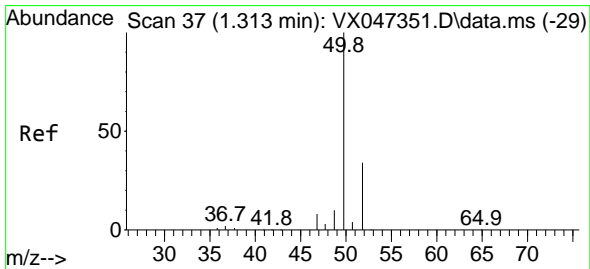
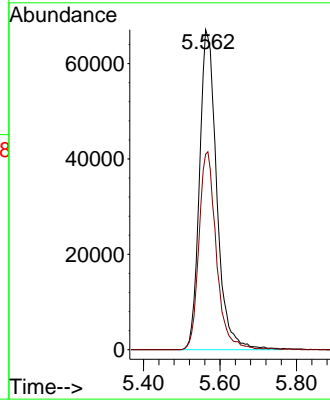
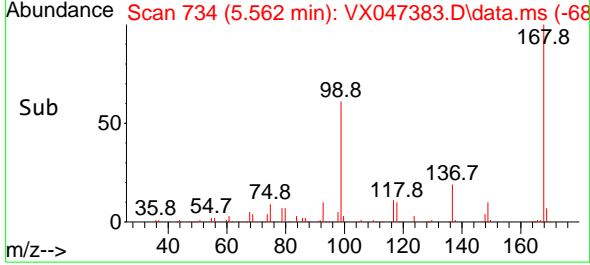


#1
 Pentafluorobenzene
 Concen: 50.000 ug/l
 RT: 5.562 min Scan# 71
 Delta R.T. -0.006 min
 Lab File: VX047383.D
 Acq: 18 Aug 2025 15:35

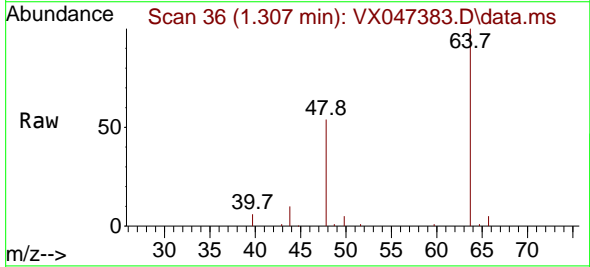
Instrument :
 MSVOA_X
 Client Sample Id :
 TW-88H-N



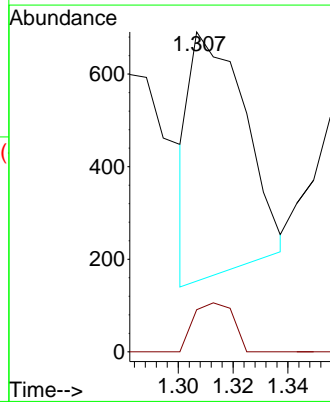
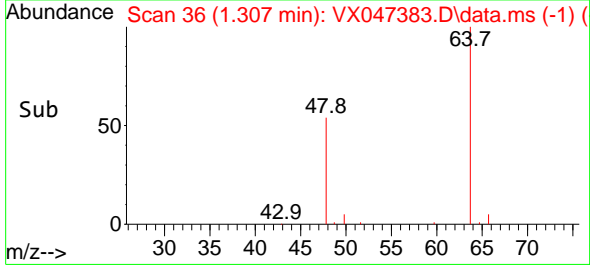
Tgt Ion: 168 Resp: 210172
 Ion Ratio Lower Upper
 168 100
 99 61.1 47.9 71.9

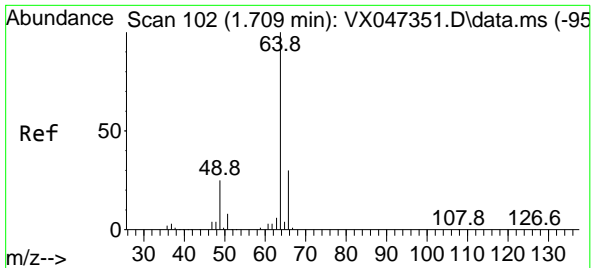


#3
 Chloromethane
 Concen: 0.303 ug/l
 RT: 1.307 min Scan# 36
 Delta R.T. -0.006 min
 Lab File: VX047383.D
 Acq: 18 Aug 2025 15:35



Tgt Ion: 50 Resp: 731
 Ion Ratio Lower Upper
 50 100
 52 20.8 27.0 40.4

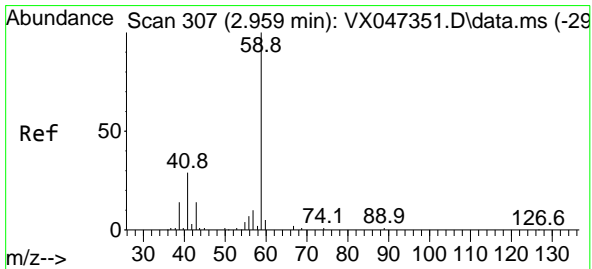
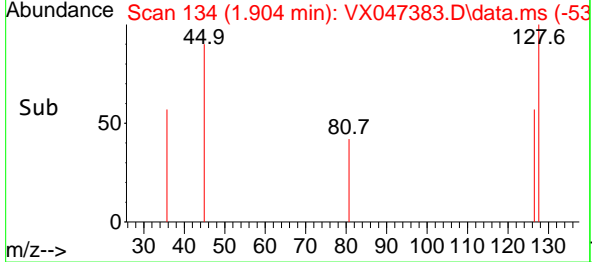
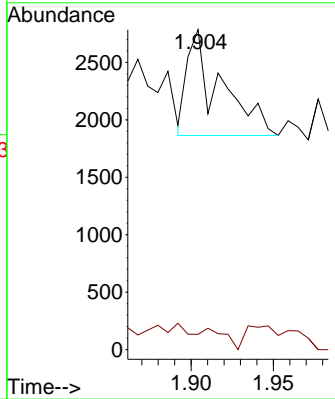
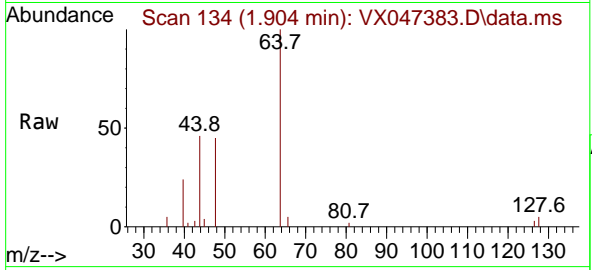




#6
 Chloroethane
 Concen: 0.701 ug/l
 RT: 1.904 min Scan# 11
 Delta R.T. 0.195 min
 Lab File: VX047383.D
 Acq: 18 Aug 2025 15:35

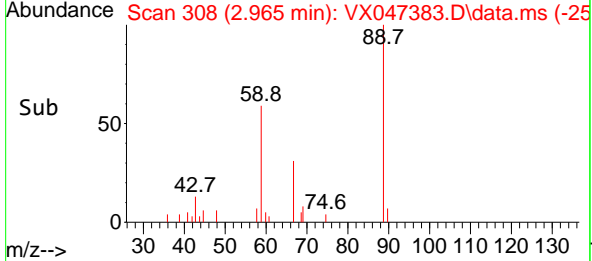
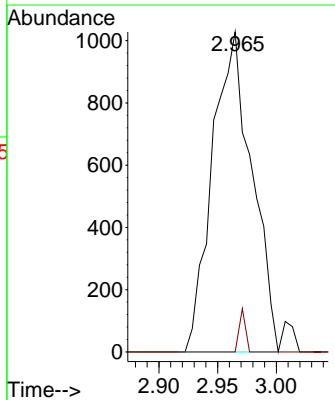
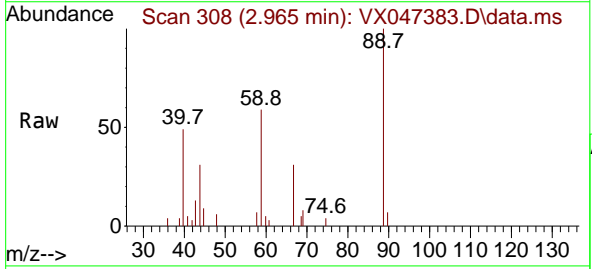
Instrument : MSVOA_X
 ClientSampleId : TW-88H-N

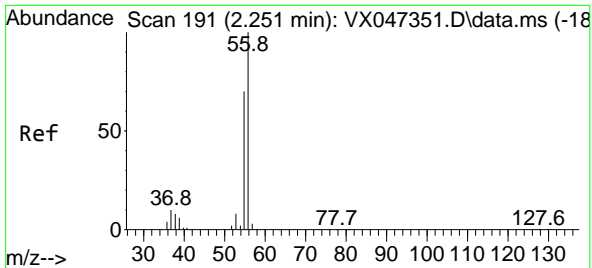
Tgt Ion: 64 Resp: 1297
 Ion Ratio Lower Upper
 64 100
 66 1.1 24.4 36.6#



#11
 Tert butyl alcohol
 Concen: 9.410 ug/l
 RT: 2.965 min Scan# 308
 Delta R.T. 0.006 min
 Lab File: VX047383.D
 Acq: 18 Aug 2025 15:35

Tgt Ion: 59 Resp: 2408
 Ion Ratio Lower Upper
 59 100
 57 0.0 8.3 12.5#

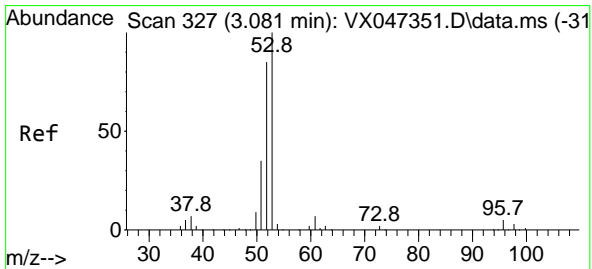
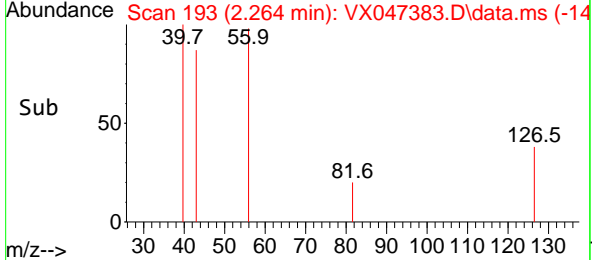
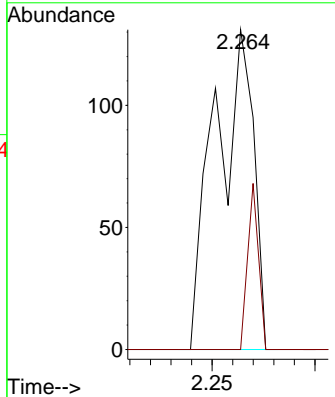
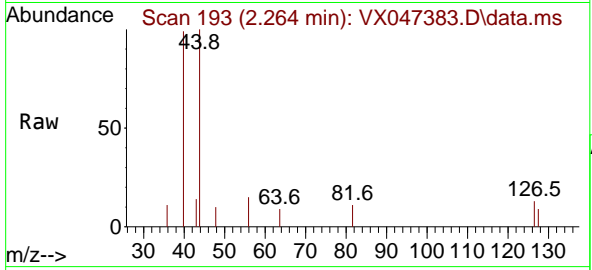




#13
 Acrolein
 Concen: 0.315 ug/l
 RT: 2.264 min Scan# 14
 Delta R.T. 0.012 min
 Lab File: VX047383.D
 Acq: 18 Aug 2025 15:35

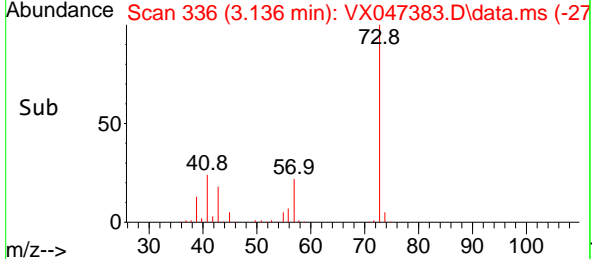
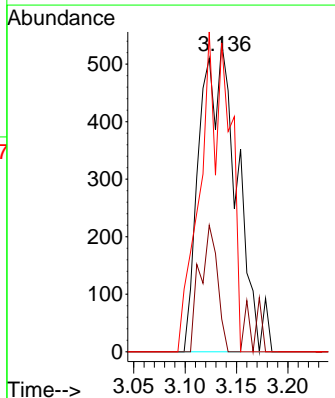
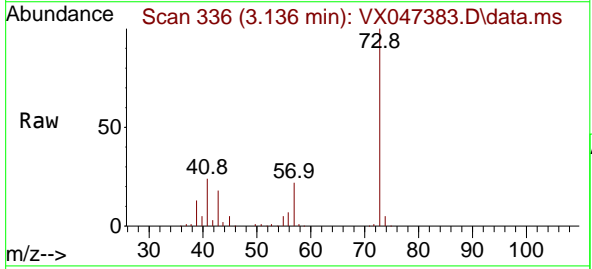
Instrument : MSVOA_X
 ClientSampleId : TW-88H-N

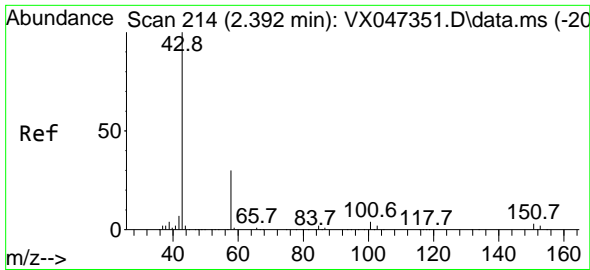
Tgt Ion: 56 Resp: 170
 Ion Ratio Lower Upper
 56 100
 55 14.7 55.5 83.3#



#15
 Acrylonitrile
 Concen: 1.093 ug/l
 RT: 3.136 min Scan# 336
 Delta R.T. 0.055 min
 Lab File: VX047383.D
 Acq: 18 Aug 2025 15:35

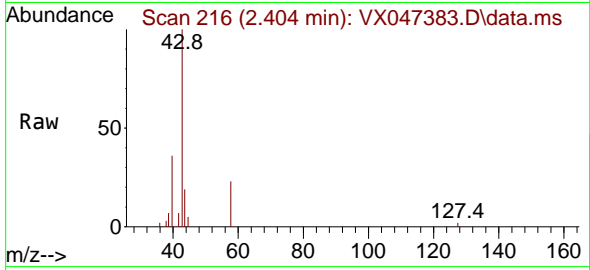
Tgt Ion: 53 Resp: 1352
 Ion Ratio Lower Upper
 53 100
 52 19.5 65.8 98.6#
 51 45.9 28.2 42.2#



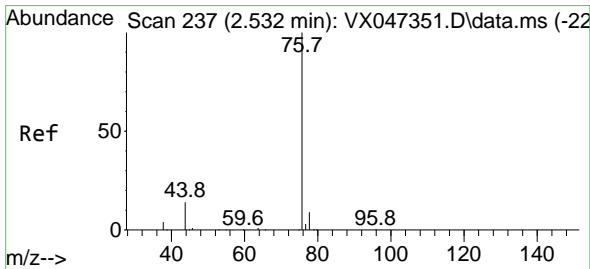
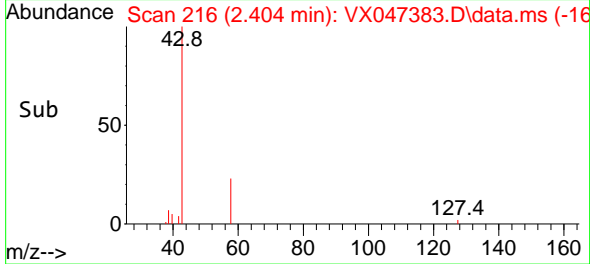
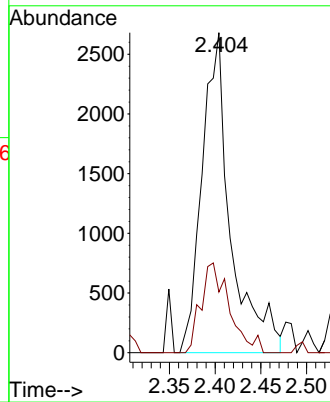


#16
 Acetone
 Concen: 5.272 ug/l
 RT: 2.404 min Scan# 216
 Delta R.T. 0.012 min
 Lab File: VX047383.D
 Acq: 18 Aug 2025 15:35

Instrument : MSVOA_X
 ClientSampleId : TW-88H-N

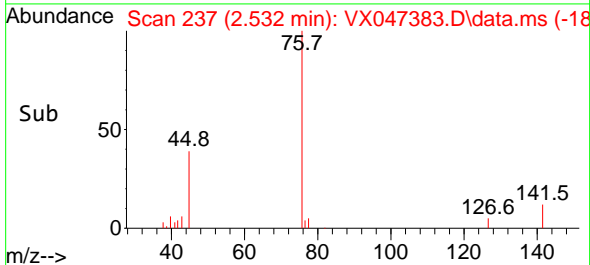
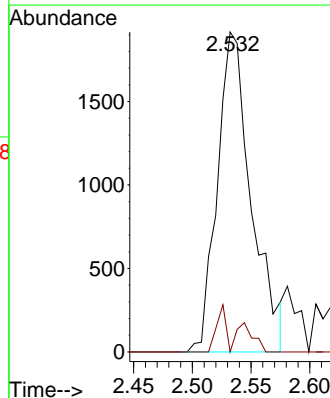
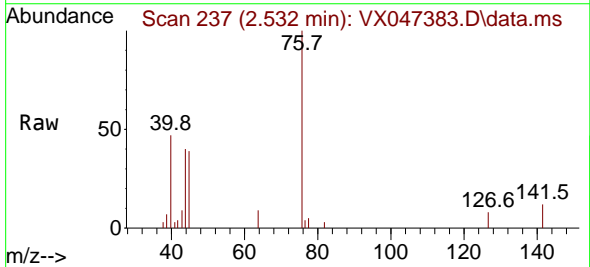


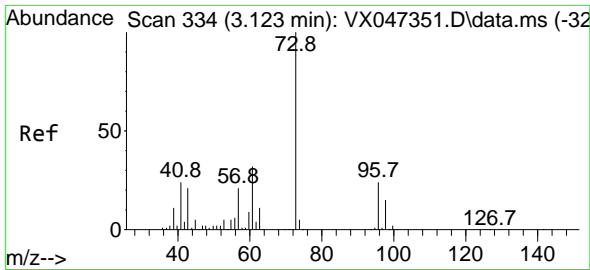
Tgt Ion: 43 Resp: 5829
 Ion Ratio Lower Upper
 43 100
 58 24.8 24.8 37.2



#17
 Carbon Disulfide
 Concen: 0.484 ug/l
 RT: 2.532 min Scan# 237
 Delta R.T. 0.000 min
 Lab File: VX047383.D
 Acq: 18 Aug 2025 15:35

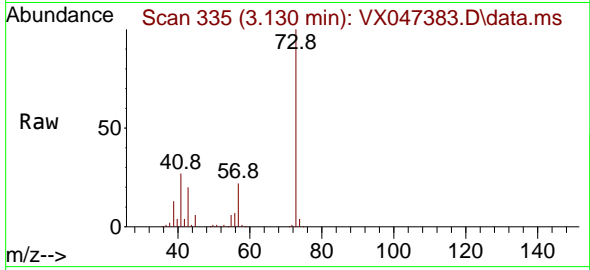
Tgt Ion: 76 Resp: 3861
 Ion Ratio Lower Upper
 76 100
 78 0.0 7.2 10.8#



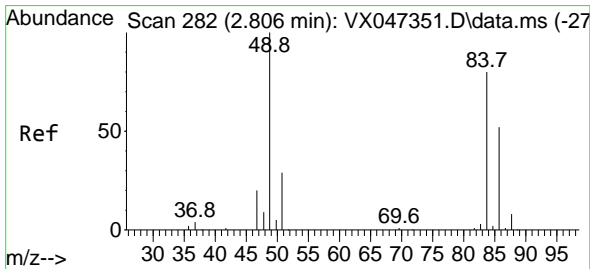
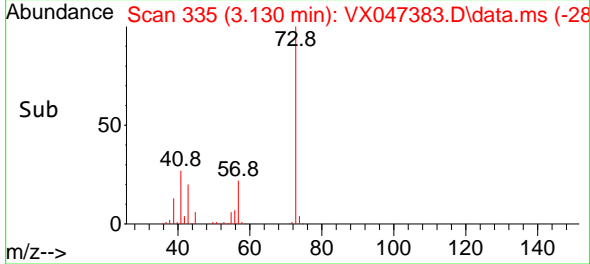
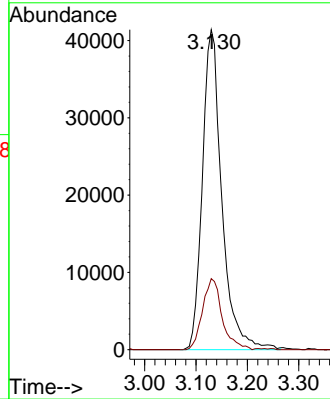


#19
 Methyl tert-butyl Ether
 Concen: 13.489 ug/l
 RT: 3.130 min Scan# 311
 Delta R.T. 0.006 min
 Lab File: VX047383.D
 Acq: 18 Aug 2025 15:35

Instrument : MSVOA_X
 ClientSampleId : TW-88H-N

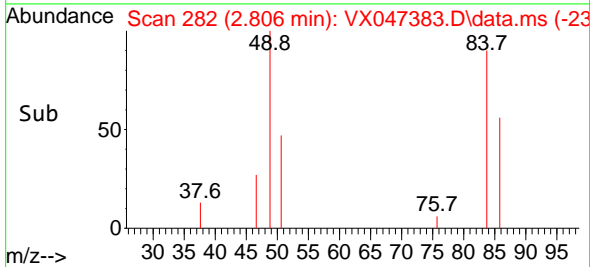
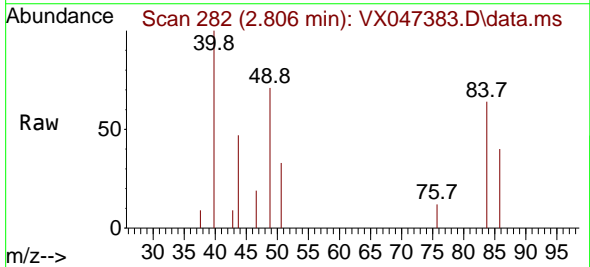
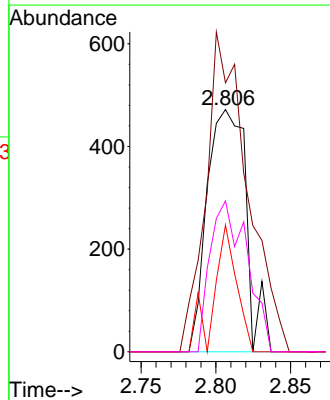


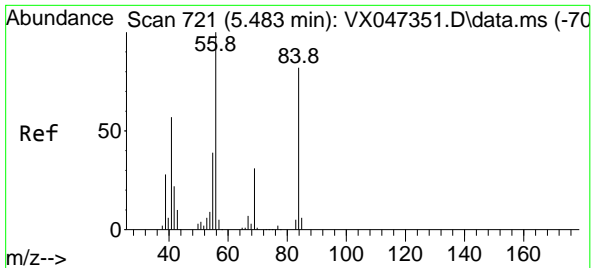
Tgt Ion: 73 Resp: 108594
 Ion Ratio Lower Upper
 73 100
 57 22.2 17.0 25.6



#20
 Methylene Chloride
 Concen: 0.294 ug/l
 RT: 2.806 min Scan# 282
 Delta R.T. 0.000 min
 Lab File: VX047383.D
 Acq: 18 Aug 2025 15:35

Tgt Ion: 84 Resp: 860
 Ion Ratio Lower Upper
 84 100
 49 111.0 100.1 150.1
 51 52.3 29.5 44.3#
 86 62.3 51.8 77.8

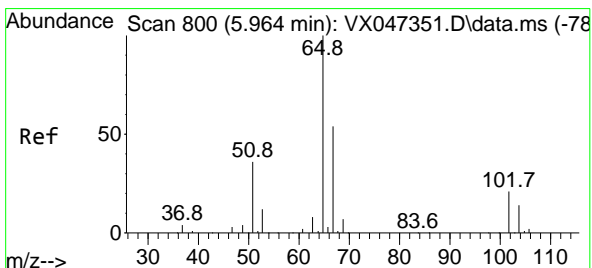
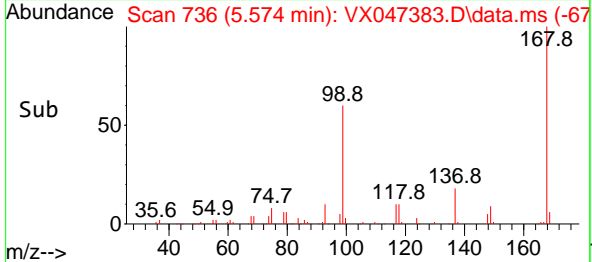
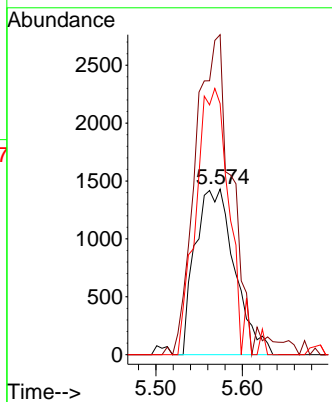
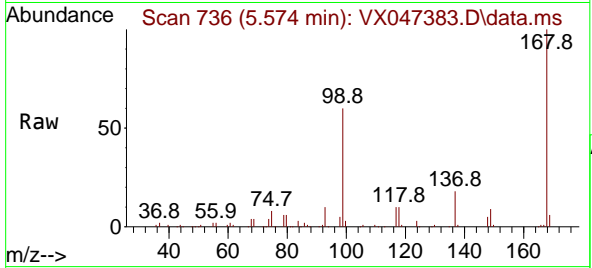




#31
 Cyclohexane
 Concen: 0.957 ug/l
 RT: 5.574 min Scan# 711
 Delta R.T. 0.092 min
 Lab File: VX047383.D
 Acq: 18 Aug 2025 15:35

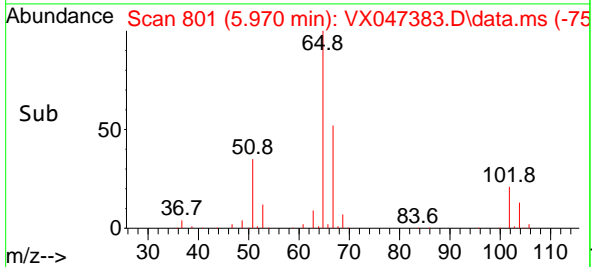
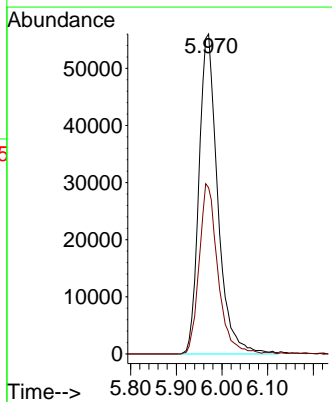
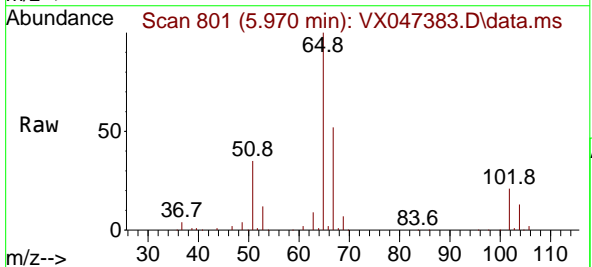
Instrument :
 MSVOA_X
 ClientSampleId :
 TW-88H-N

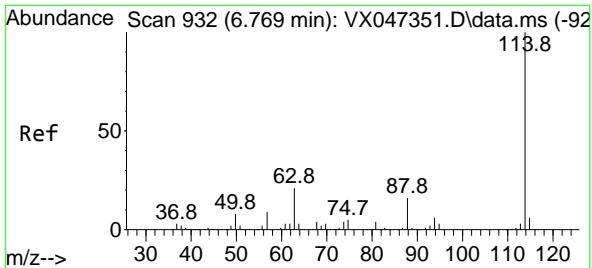
Tgt Ion: 56 Resp: 4530
 Ion Ratio Lower Upper
 56 100
 69 185.7 24.3 36.5#
 84 151.6 65.3 97.9#



#33
 1,2-Dichloroethane-d4
 Concen: 54.332 ug/l
 RT: 5.970 min Scan# 801
 Delta R.T. 0.006 min
 Lab File: VX047383.D
 Acq: 18 Aug 2025 15:35

Tgt Ion: 65 Resp: 159813
 Ion Ratio Lower Upper
 65 100
 67 52.9 0.0 106.0



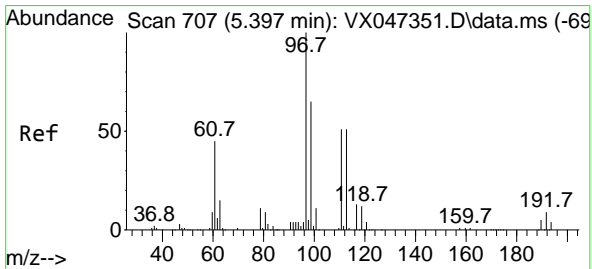
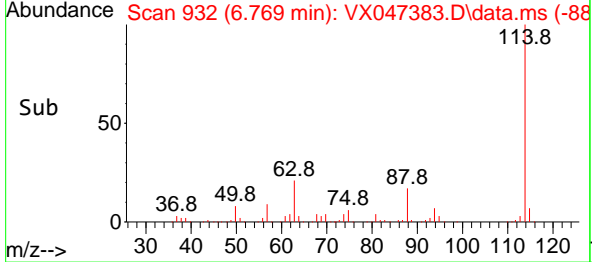
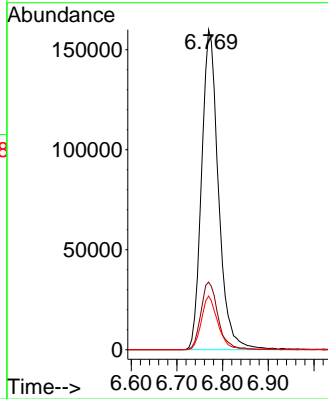
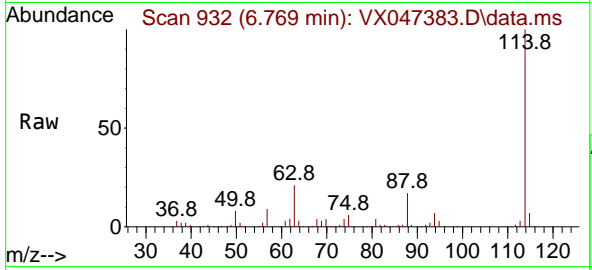


#34
 1,4-Difluorobenzene
 Concen: 50.000 ug/l
 RT: 6.769 min Scan# 91
 Delta R.T. 0.000 min
 Lab File: VX047383.D
 Acq: 18 Aug 2025 15:35

Instrument :
 MSVOA_X
 ClientSampleId :
 TW-88H-N

Tgt Ion:114 Resp: 408314

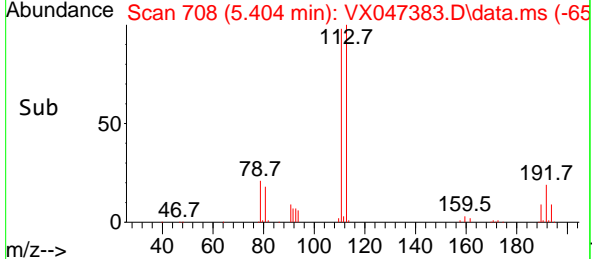
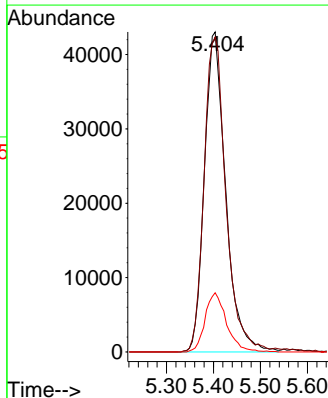
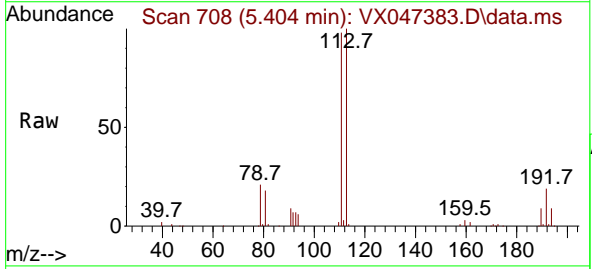
Ion	Ratio	Lower	Upper
114	100		
63	21.1	0.0	42.4
88	16.8	0.0	33.0

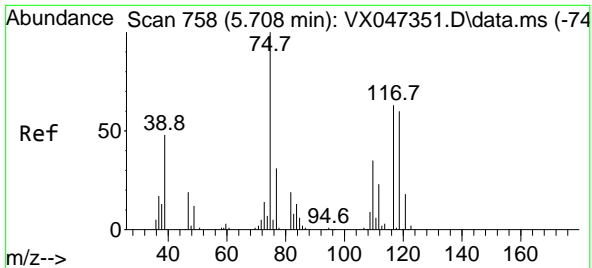


#35
 Dibromofluoromethane
 Concen: 51.014 ug/l
 RT: 5.404 min Scan# 708
 Delta R.T. 0.006 min
 Lab File: VX047383.D
 Acq: 18 Aug 2025 15:35

Tgt Ion:113 Resp: 135188

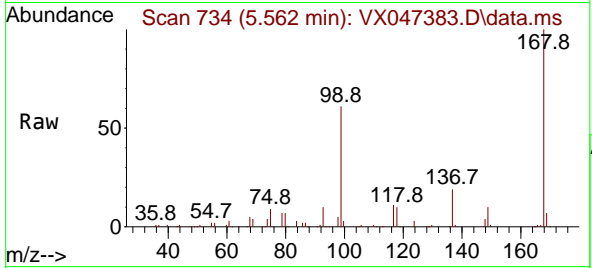
Ion	Ratio	Lower	Upper
113	100		
111	101.0	81.4	122.2
192	18.7	14.1	21.1



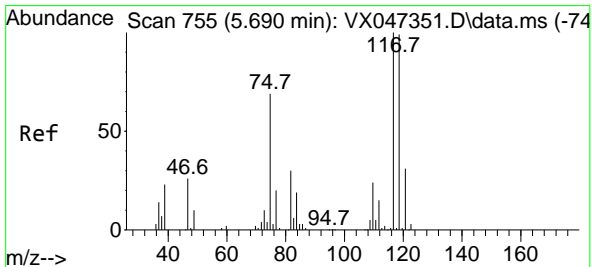
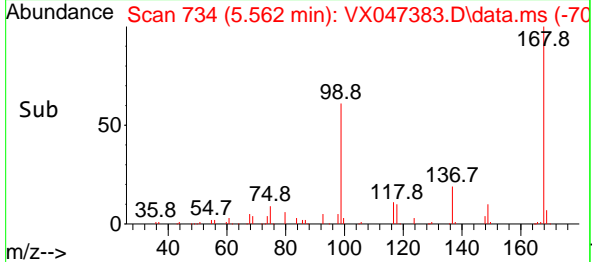
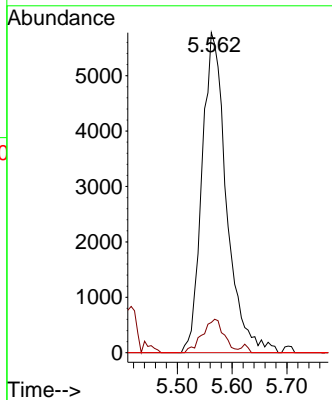


#36
 1,1-Dichloropropene
 Concen: 4.287 ug/l
 RT: 5.562 min Scan# 711
 Delta R.T. -0.146 min
 Lab File: VX047383.D
 Acq: 18 Aug 2025 15:35

Instrument : MSVOA_X
 ClientSampleId : TW-88H-N

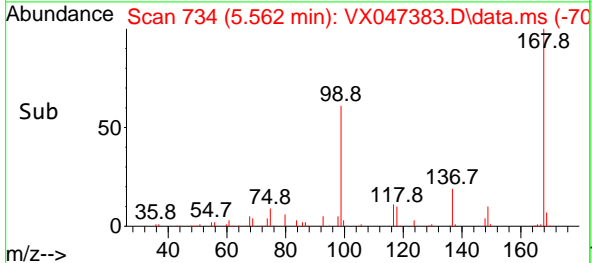
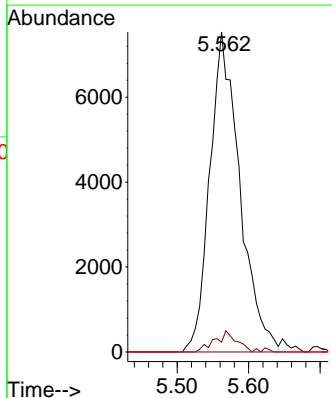
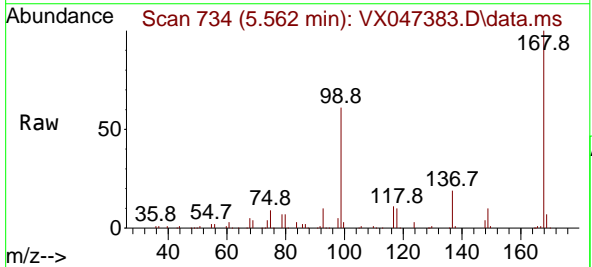


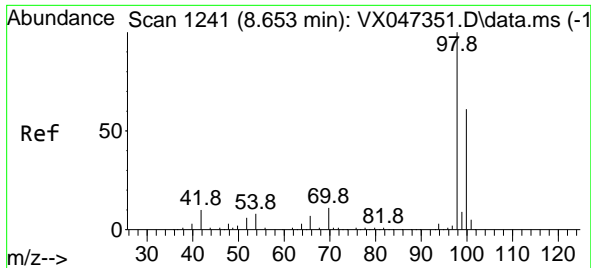
Tgt Ion: 75 Resp: 17934
 Ion Ratio Lower Upper
 75 100
 110 9.3 17.4 52.2#
 77 0.0 24.4 36.6#



#38
 Carbon Tetrachloride
 Concen: 4.794 ug/l
 RT: 5.562 min Scan# 734
 Delta R.T. -0.128 min
 Lab File: VX047383.D
 Acq: 18 Aug 2025 15:35

Tgt Ion: 117 Resp: 21915
 Ion Ratio Lower Upper
 117 100
 119 3.1 78.5 117.7#
 121 0.0 24.7 37.1#

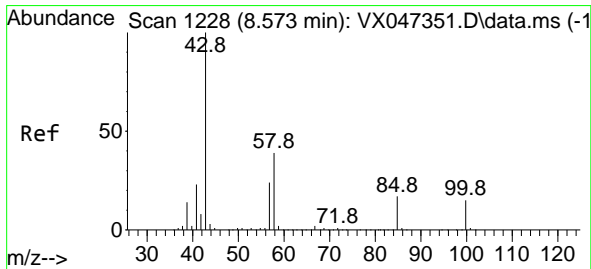
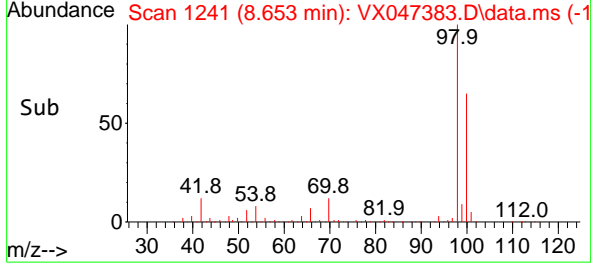
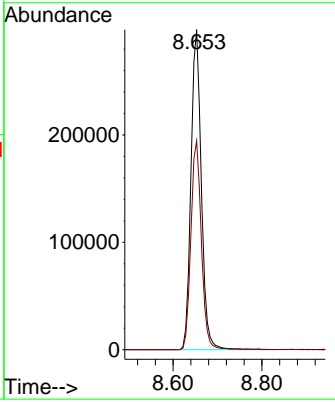
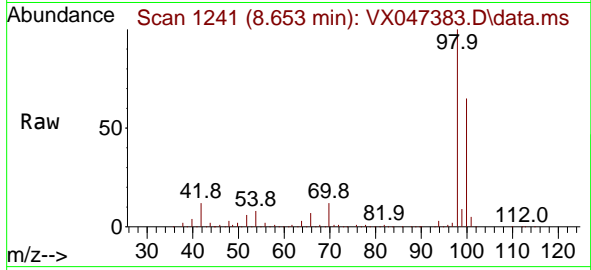




#50
 Toluene-d8
 Concen: 50.741 ug/l
 RT: 8.653 min Scan# 1240
 Delta R.T. 0.000 min
 Lab File: VX047383.D
 Acq: 18 Aug 2025 15:35

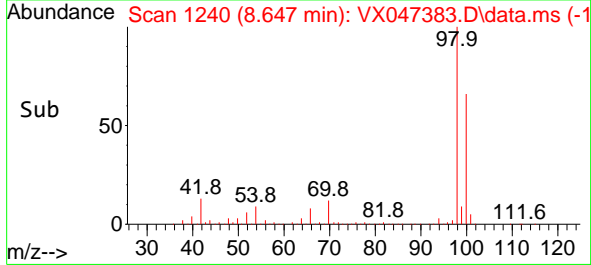
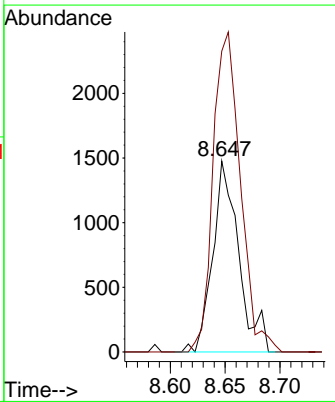
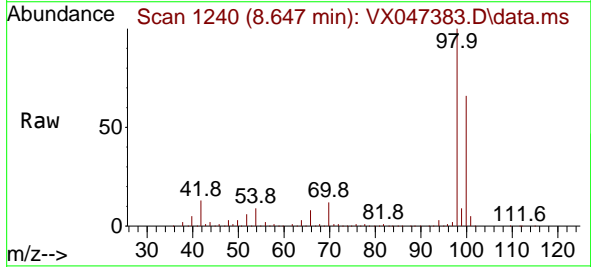
Instrument : MSVOA_X
 ClientSampleId : TW-88H-N

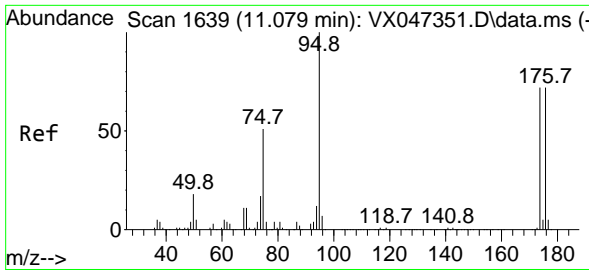
Tgt Ion: 98 Resp: 480604
 Ion Ratio Lower Upper
 98 100
 100 65.9 53.9 80.9



#51
 4-Methyl-2-Pentanone
 Concen: 0.675 ug/l
 RT: 8.647 min Scan# 1240
 Delta R.T. 0.073 min
 Lab File: VX047383.D
 Acq: 18 Aug 2025 15:35

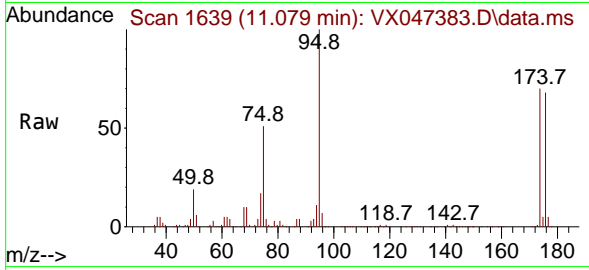
Tgt Ion: 43 Resp: 2423
 Ion Ratio Lower Upper
 43 100
 58 177.3 31.2 46.8#



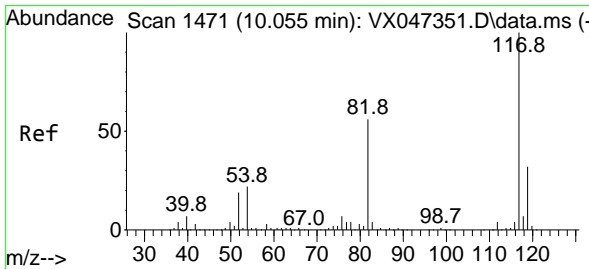
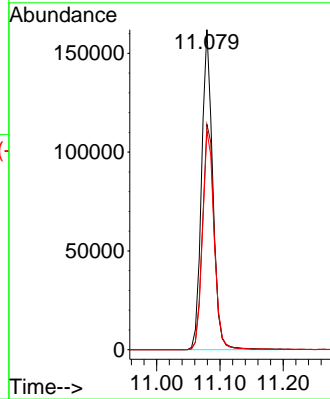
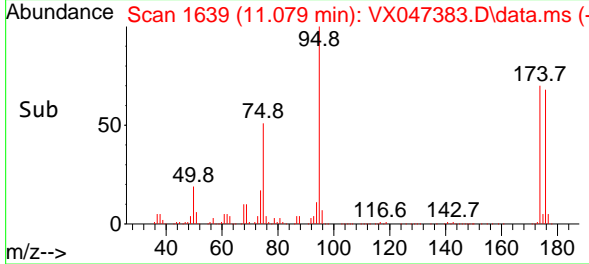


#62
 4-Bromofluorobenzene
 Concen: 56.990 ug/l
 RT: 11.079 min Scan# 1639
 Delta R.T. 0.000 min
 Lab File: VX047383.D
 Acq: 18 Aug 2025 15:35

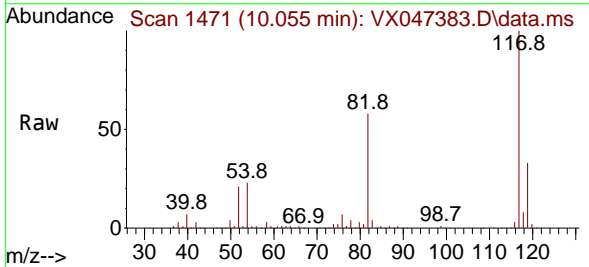
Instrument : MSVOA_X
 ClientSampleId : TW-88H-N



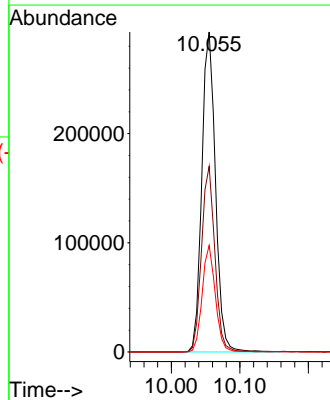
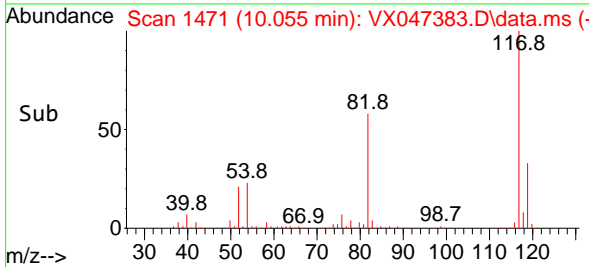
Tgt Ion: 95 Resp: 199196
 Ion Ratio Lower Upper
 95 100
 174 74.2 0.0 148.0
 176 71.3 0.0 145.4

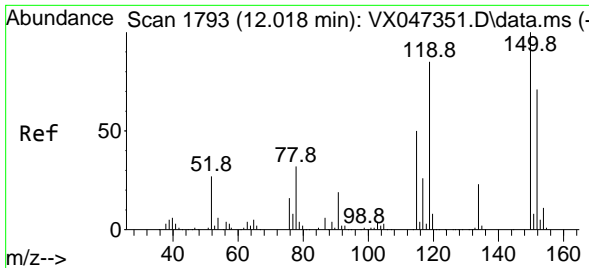


#63
 Chlorobenzene-d5
 Concen: 50.000 ug/l
 RT: 10.055 min Scan# 1471
 Delta R.T. 0.000 min
 Lab File: VX047383.D
 Acq: 18 Aug 2025 15:35



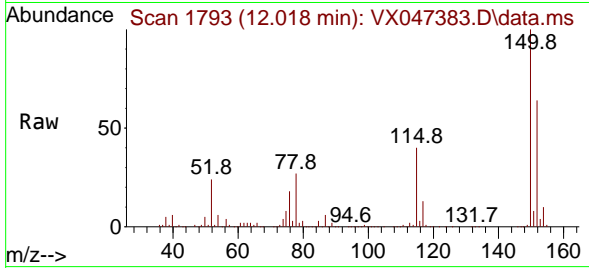
Tgt Ion: 117 Resp: 407032
 Ion Ratio Lower Upper
 117 100
 82 58.0 45.0 67.4
 119 33.3 25.8 38.8



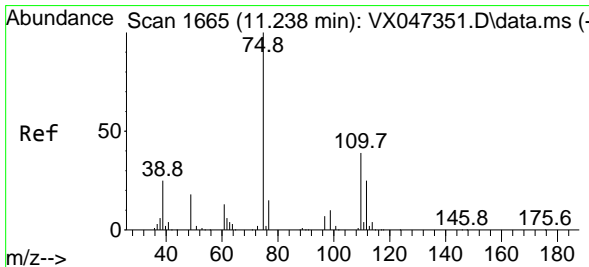
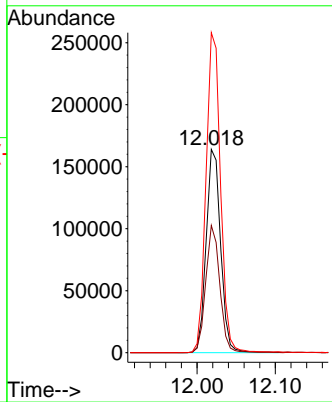
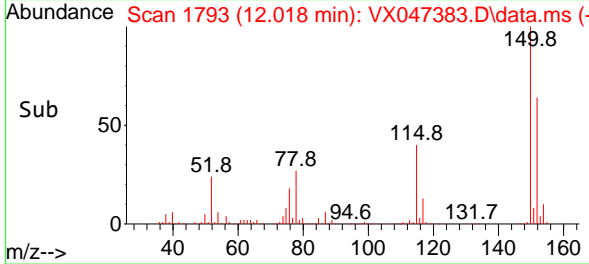


#72
 1,4-Dichlorobenzene-d4
 Concen: 50.000 ug/l
 RT: 12.018 min Scan# 1
 Delta R.T. 0.000 min
 Lab File: VX047383.D
 Acq: 18 Aug 2025 15:35

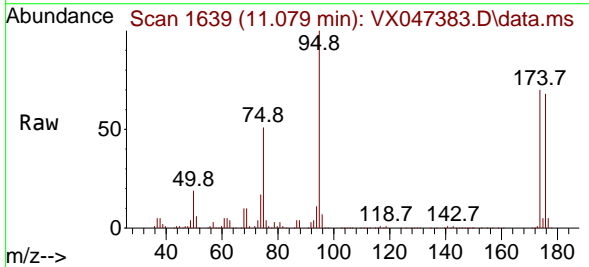
Instrument :
 MSVOA_X
 ClientSampleId :
 TW-88H-N



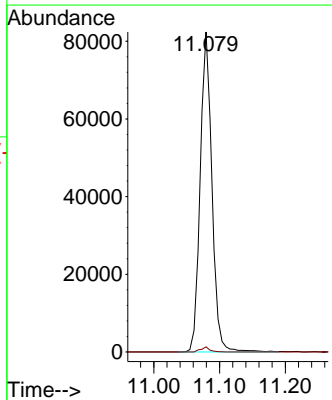
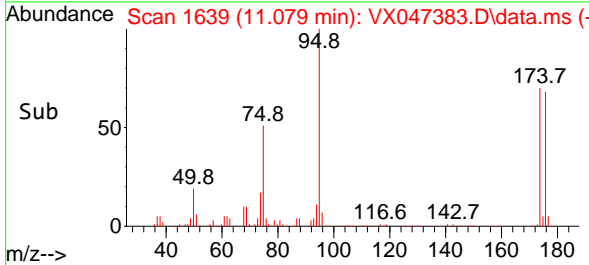
Tgt Ion:152 Resp: 209517
 Ion Ratio Lower Upper
 152 100
 115 61.0 44.6 133.8
 150 158.6 0.0 349.8

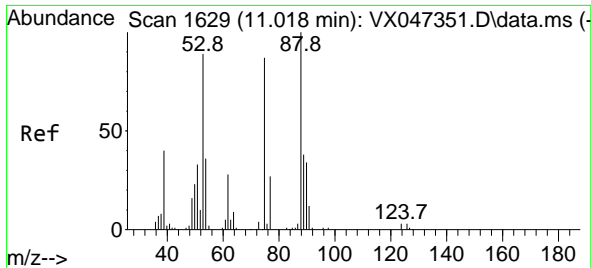


#76
 1,2,3-Trichloropropane
 Concen: 26.637 ug/l
 RT: 11.079 min Scan# 1639
 Delta R.T. -0.158 min
 Lab File: VX047383.D
 Acq: 18 Aug 2025 15:35



Tgt Ion: 75 Resp: 102359
 Ion Ratio Lower Upper
 75 100
 77 1.2 19.4 58.2#





#81
 trans-1,4-Dichloro-2-butene
 Concen: 105.437 ug/l
 RT: 11.079 min Scan# 10
 Delta R.T. 0.061 min
 Lab File: VX047383.D
 Acq: 18 Aug 2025 15:35

Instrument :
 MSVOA_X
 ClientSampleId :
 TW-88H-N

Tgt Ion: 75 Resp: 102359

Ion	Ratio	Lower	Upper
75	100		
53	0.0	85.2	127.8#
89	0.0	36.7	55.1#

