

Data Path : Z:\voasrv\HPCHEM1\MSVOA_X\Data\VX081825\
 Data File : VX047384.D
 Acq On : 18 Aug 2025 15:57
 Operator : JC/MD
 Sample : Q2815-09RE
 Misc : 5.0mL/MSVOA_X/WATER
 ALS Vial : 15 Sample Multiplier: 1

Instrument :
 MSVOA_X
 ClientSampleId :
 TW-88H-W

Quant Time: Aug 19 01:44:45 2025
 Quant Method : Z:\voasrv\HPCHEM1\MSVOA_X\Method\82X081525W.M
 Quant Title : SW846 8260
 QLast Update : Mon Aug 18 04:18:28 2025
 Response via : Initial Calibration

Compound	R.T.	QIon	Response	Conc	Units	Dev(Min)

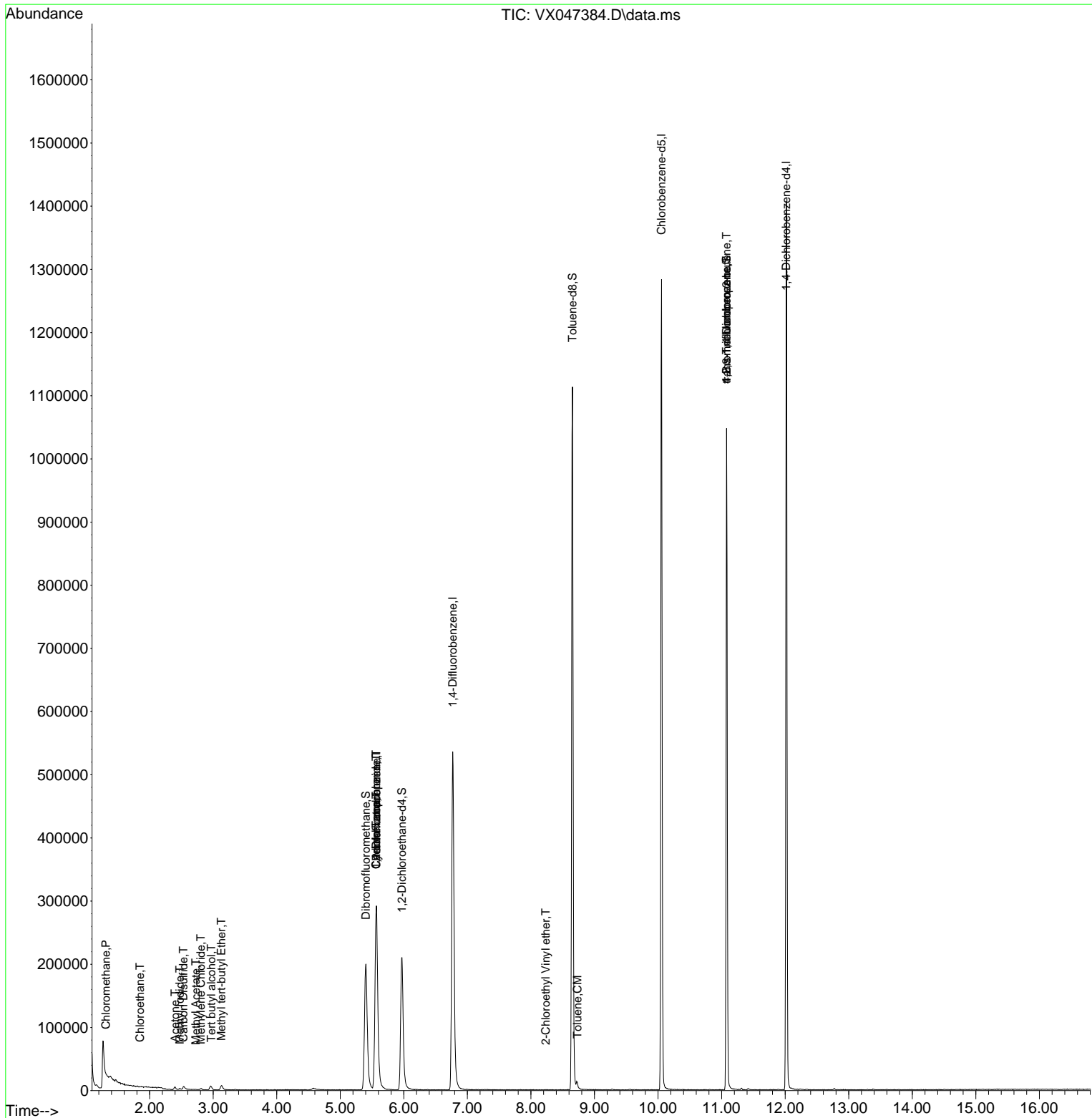
Internal Standards						
1) Pentafluorobenzene	5.568	168	290353	50.000	ug/l	0.00
34) 1,4-Difluorobenzene	6.769	114	574943	50.000	ug/l	0.00
63) Chlorobenzene-d5	10.055	117	568154	50.000	ug/l	0.00
72) 1,4-Dichlorobenzene-d4	12.018	152	285001	50.000	ug/l	0.00
System Monitoring Compounds						
33) 1,2-Dichloroethane-d4	5.970	65	221717	54.562	ug/l	0.00
Spiked Amount	50.000	Range 78 - 117	Recovery	=	109.120%	
35) Dibromofluoromethane	5.403	113	190013	50.922	ug/l	0.00
Spiked Amount	50.000	Range 75 - 124	Recovery	=	101.840%	
50) Toluene-d8	8.653	98	675048	50.614	ug/l	0.00
Spiked Amount	50.000	Range 92 - 112	Recovery	=	101.220%	
62) 4-Bromofluorobenzene	11.079	95	276904	56.262	ug/l	0.00
Spiked Amount	50.000	Range 83 - 123	Recovery	=	112.520%	
Target Compounds						
						Qvalue
3) Chloromethane	1.313	50	690	0.207	ug/l #	87
6) Chloroethane	1.849	64	530	0.207	ug/l #	44
10) Methyl Iodide	2.477	142	1915	0.312	ug/l #	90
11) Tert butyl alcohol	2.971	59	3160	8.939	ug/l #	72
16) Acetone	2.398	43	5720	3.745	ug/l	94
17) Carbon Disulfide	2.532	76	3740	0.339	ug/l #	95
18) Methyl Acetate	2.727	43	874	0.221	ug/l #	53
19) Methyl tert-butyl Ether	3.129	73	8021	0.721	ug/l	91
20) Methylene Chloride	2.806	84	1071	0.265	ug/l	92
31) Cyclohexane	5.562	56	6429	0.983	ug/l #	1
36) 1,1-Dichloropropene	5.562	75	24295	4.125	ug/l #	50
38) Carbon Tetrachloride	5.562	117	31550	4.901	ug/l #	16
52) Toluene	8.732	92	4470	0.410	ug/l	94
58) 2-Chloroethyl Vinyl ether	8.232	63	21	8.362	ug/l #	46
76) 1,2,3-Trichloropropane	11.079	75	141214	27.015	ug/l #	38
81) trans-1,4-Dichloro-2-b...	11.079	75	141214	106.823	ug/l #	7

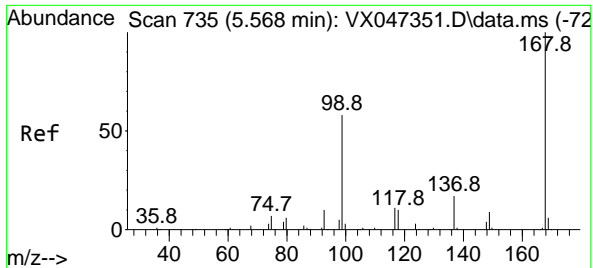
(#) = qualifier out of range (m) = manual integration (+) = signals summed

Data Path : Z:\voasrv\HPCHEM1\MSVOA_X\Data\VX081825\
 Data File : VX047384.D
 Acq On : 18 Aug 2025 15:57
 Operator : JC/MD
 Sample : Q2815-09RE
 Misc : 5.0mL/MSVOA_X/WATER
 ALS Vial : 15 Sample Multiplier: 1

Instrument :
 MSVOA_X
 ClientSampleId :
 TW-88H-W

Quant Time: Aug 19 01:44:45 2025
 Quant Method : Z:\voasrv\HPCHEM1\MSVOA_X\Method\82X081525W.M
 Quant Title : SW846 8260
 QLast Update : Mon Aug 18 04:18:28 2025
 Response via : Initial Calibration

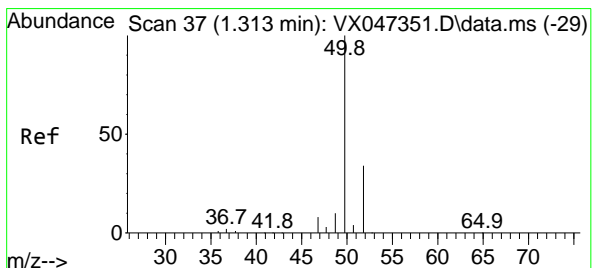
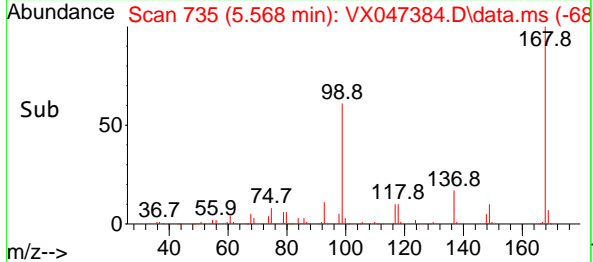
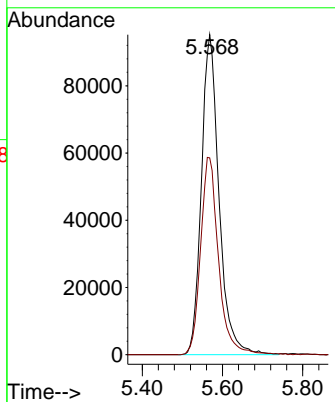
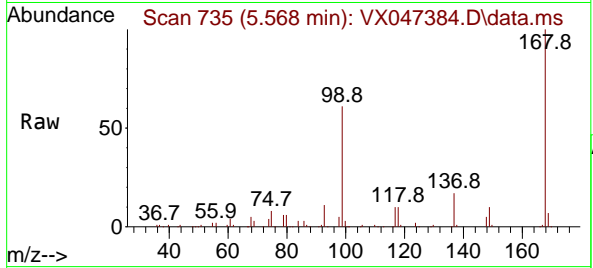




#1
 Pentafluorobenzene
 Concen: 50.000 ug/l
 RT: 5.568 min Scan# 71
 Delta R.T. 0.000 min
 Lab File: VX047384.D
 Acq: 18 Aug 2025 15:57

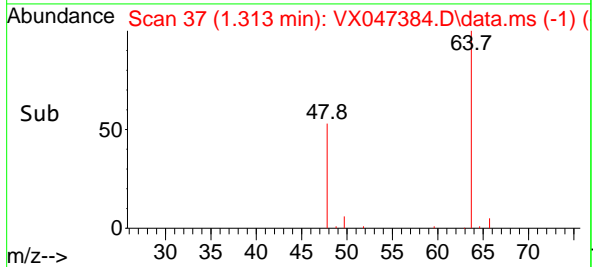
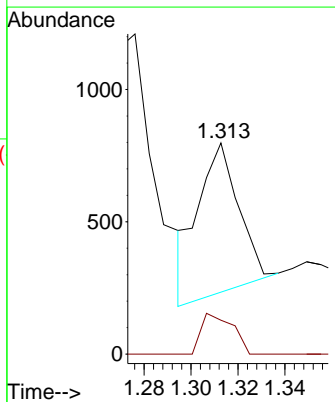
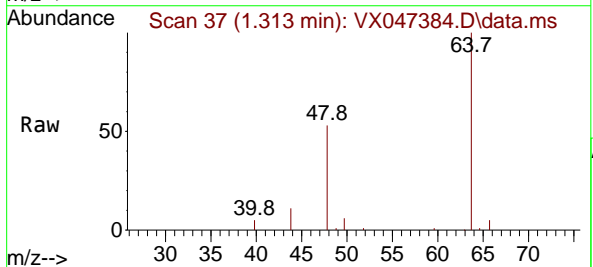
Instrument :
 MSVOA_X
 ClientSampleId :
 TW-88H-W

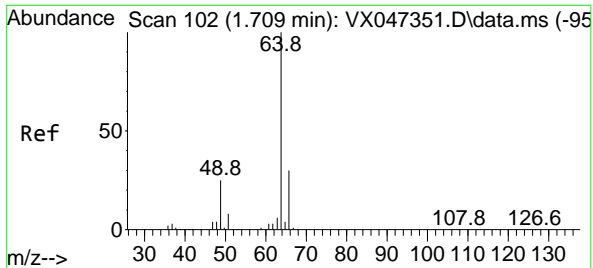
Tgt Ion:168 Resp: 290353
 Ion Ratio Lower Upper
 168 100
 99 61.5 47.9 71.9



#3
 Chloromethane
 Concen: 0.207 ug/l
 RT: 1.313 min Scan# 37
 Delta R.T. 0.000 min
 Lab File: VX047384.D
 Acq: 18 Aug 2025 15:57

Tgt Ion: 50 Resp: 690
 Ion Ratio Lower Upper
 50 100
 52 26.0 27.0 40.4#

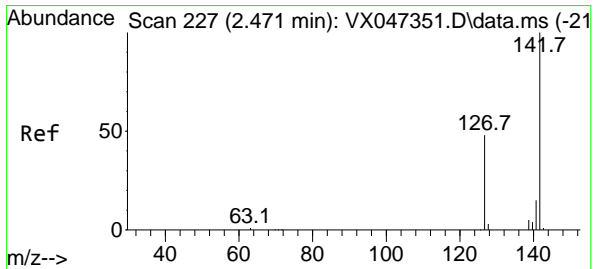
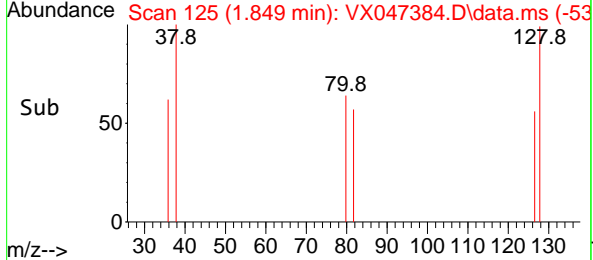
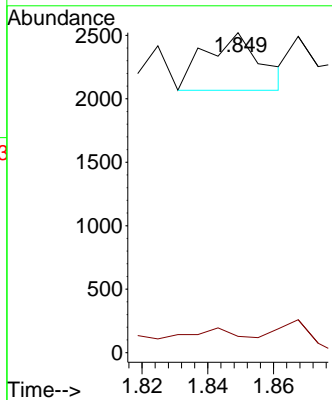
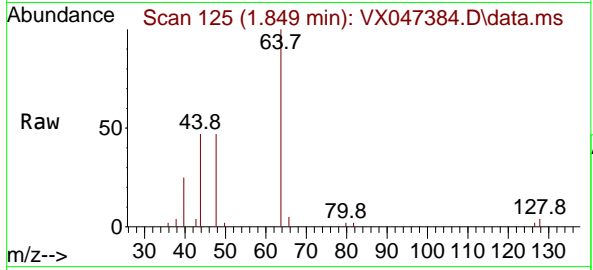




#6
 Chloroethane
 Concen: 0.207 ug/l
 RT: 1.849 min Scan# 11
 Delta R.T. 0.140 min
 Lab File: VX047384.D
 Acq: 18 Aug 2025 15:57

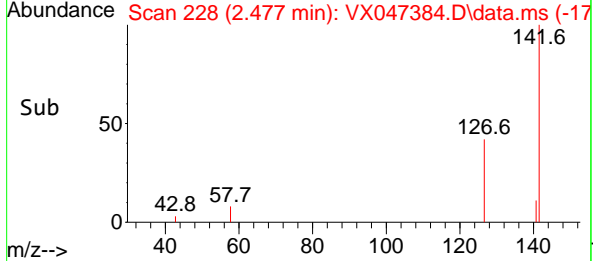
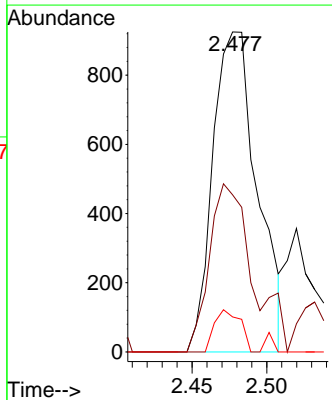
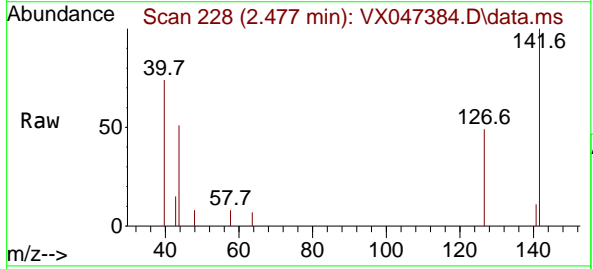
Instrument : MSVOA_X
 Client SampleId : TW-88H-W

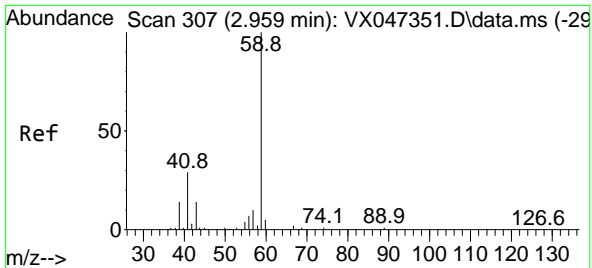
Tgt Ion: 64 Resp: 530
 Ion Ratio Lower Upper
 64 100
 66 0.0 24.4 36.6#



#10
 Methyl Iodide
 Concen: 0.312 ug/l
 RT: 2.477 min Scan# 228
 Delta R.T. 0.006 min
 Lab File: VX047384.D
 Acq: 18 Aug 2025 15:57

Tgt Ion:142 Resp: 1915
 Ion Ratio Lower Upper
 142 100
 127 50.5 36.1 54.1
 141 7.7 11.1 16.7#

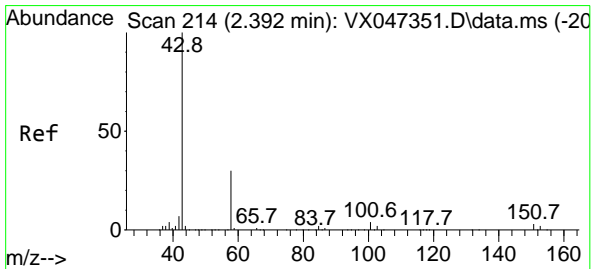
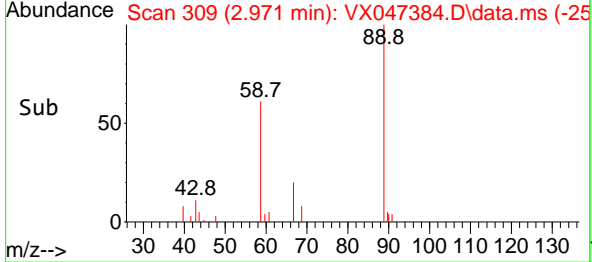
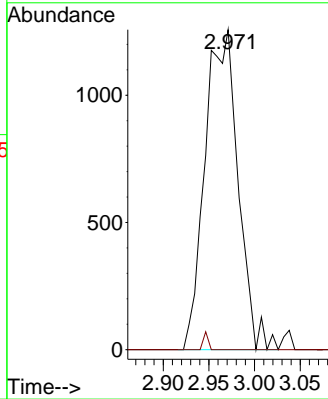
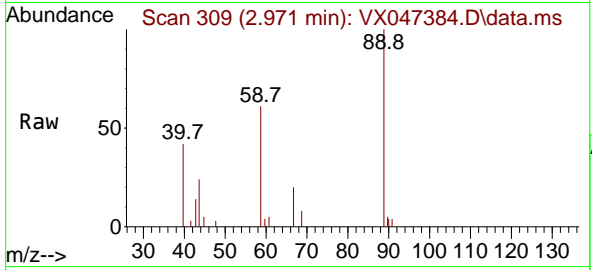




#11
 Tert butyl alcohol
 Concen: 8.939 ug/l
 RT: 2.971 min Scan# 307
 Delta R.T. 0.012 min
 Lab File: VX047384.D
 Acq: 18 Aug 2025 15:57

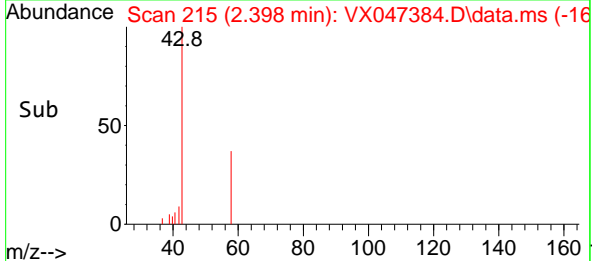
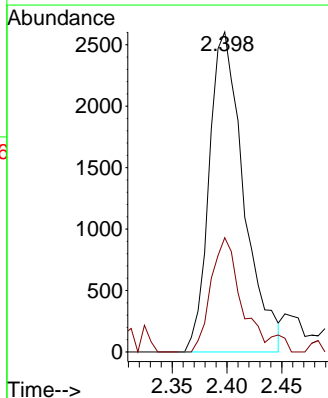
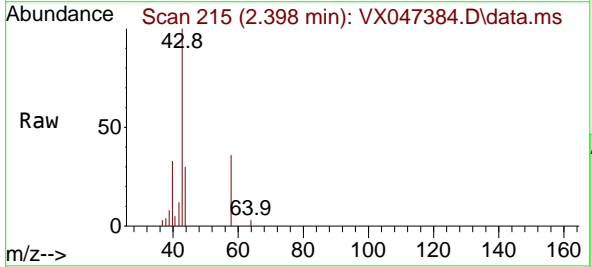
Instrument : MSVOA_X
 ClientSampleId : TW-88H-W

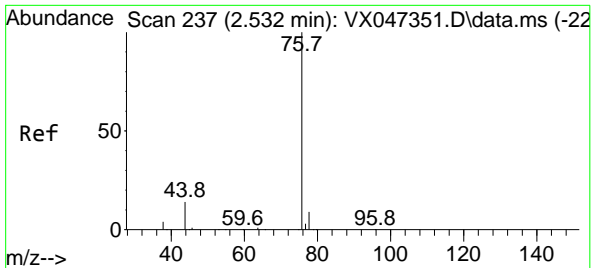
Tgt Ion: 59 Resp: 3160
 Ion Ratio Lower Upper
 59 100
 57 0.0 8.3 12.5#



#16
 Acetone
 Concen: 3.745 ug/l
 RT: 2.398 min Scan# 215
 Delta R.T. 0.006 min
 Lab File: VX047384.D
 Acq: 18 Aug 2025 15:57

Tgt Ion: 43 Resp: 5720
 Ion Ratio Lower Upper
 43 100
 58 27.6 24.8 37.2

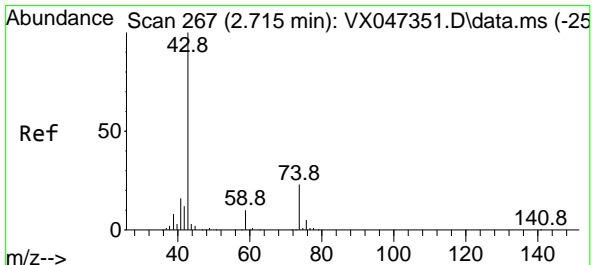
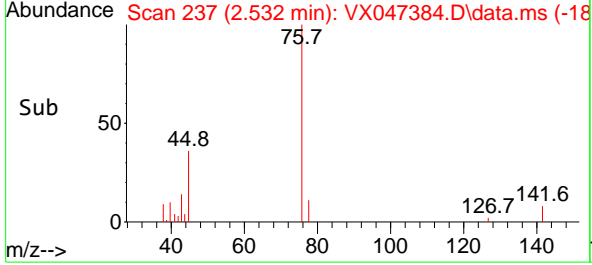
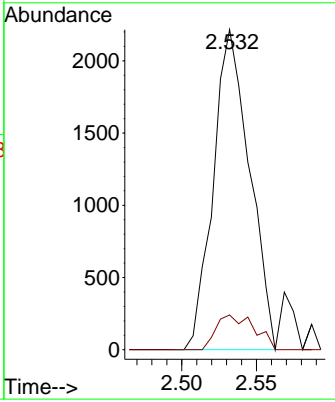
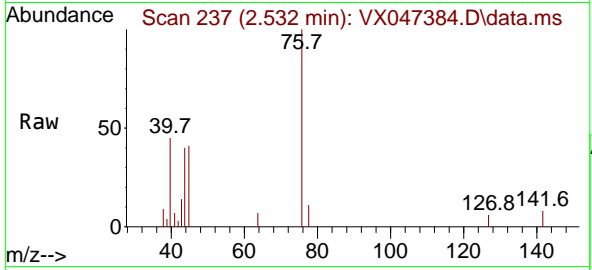




#17
 Carbon Disulfide
 Concen: 0.339 ug/l
 RT: 2.532 min Scan# 211
 Delta R.T. 0.000 min
 Lab File: VX047384.D
 Acq: 18 Aug 2025 15:57

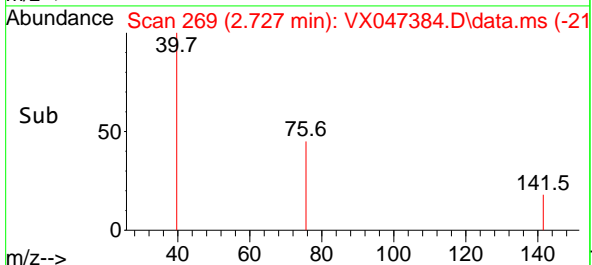
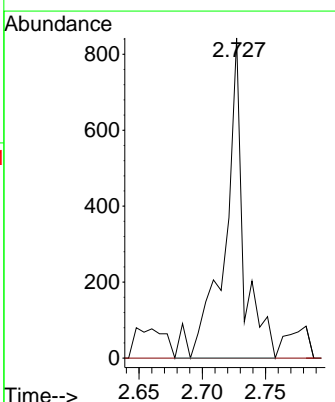
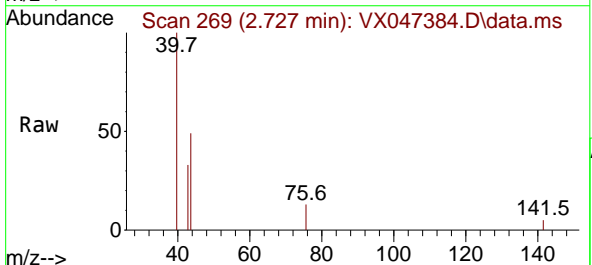
Instrument : MSVOA_X
 ClientSampleId : TW-88H-W

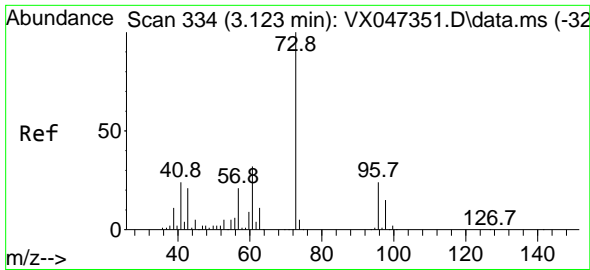
Tgt Ion: 76 Resp: 3740
 Ion Ratio Lower Upper
 76 100
 78 10.9 7.2 10.8#



#18
 Methyl Acetate
 Concen: 0.221 ug/l
 RT: 2.727 min Scan# 269
 Delta R.T. 0.012 min
 Lab File: VX047384.D
 Acq: 18 Aug 2025 15:57

Tgt Ion: 43 Resp: 874
 Ion Ratio Lower Upper
 43 100
 74 0.0 18.4 27.6#

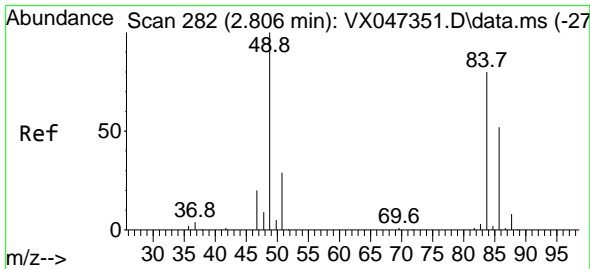
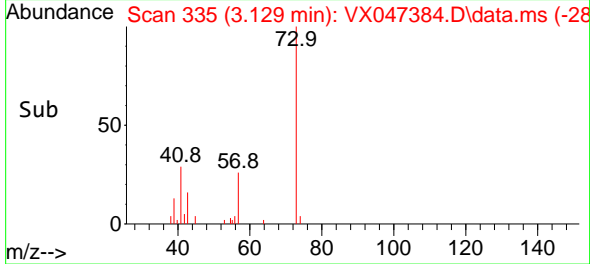
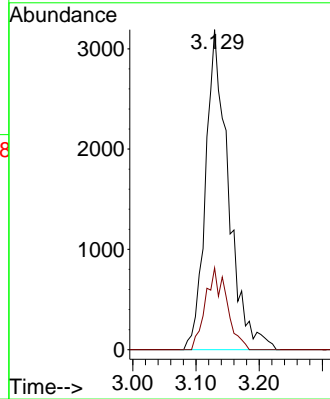
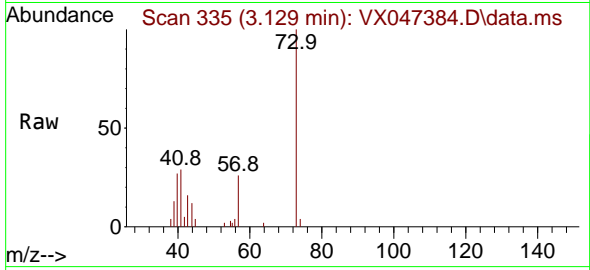




#19
 Methyl tert-butyl Ether
 Concen: 0.721 ug/l
 RT: 3.129 min Scan# 311
 Delta R.T. 0.006 min
 Lab File: VX047384.D
 Acq: 18 Aug 2025 15:57

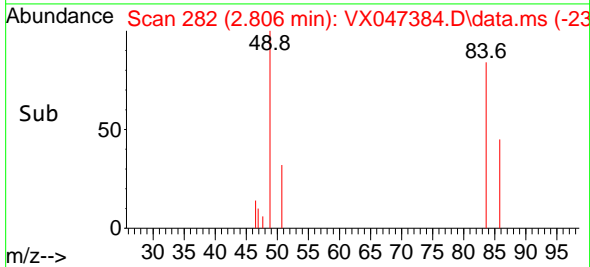
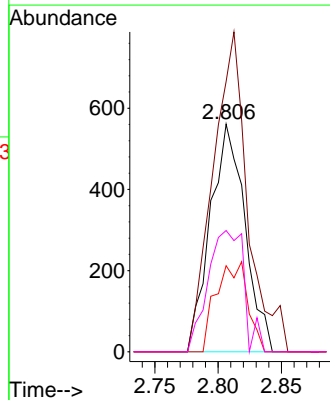
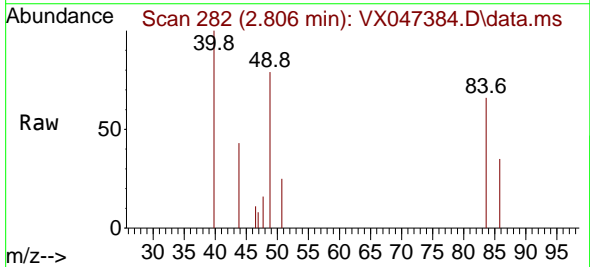
Instrument : MSVOA_X
 ClientSampleId : TW-88H-W

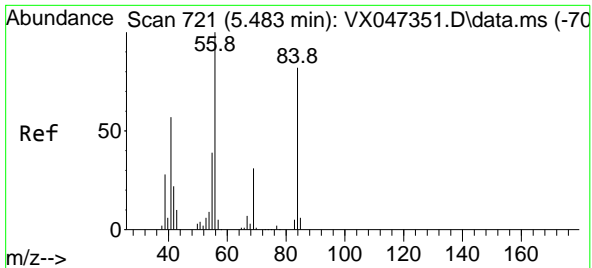
Tgt Ion: 73 Resp: 8021
 Ion Ratio Lower Upper
 73 100
 57 25.5 17.0 25.6



#20
 Methylene Chloride
 Concen: 0.265 ug/l
 RT: 2.806 min Scan# 282
 Delta R.T. 0.000 min
 Lab File: VX047384.D
 Acq: 18 Aug 2025 15:57

Tgt Ion: 84 Resp: 1071
 Ion Ratio Lower Upper
 84 100
 49 118.7 100.1 150.1
 51 37.8 29.5 44.3
 86 53.3 51.8 77.8



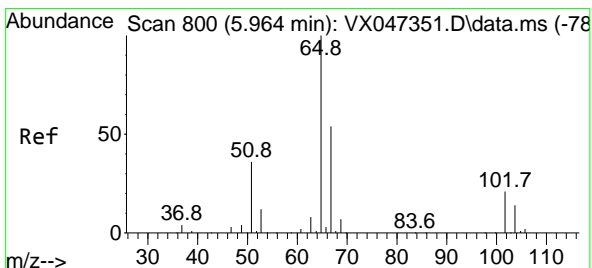
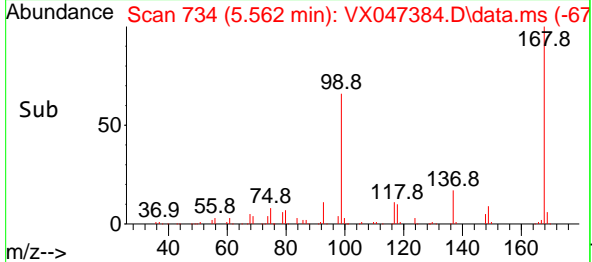
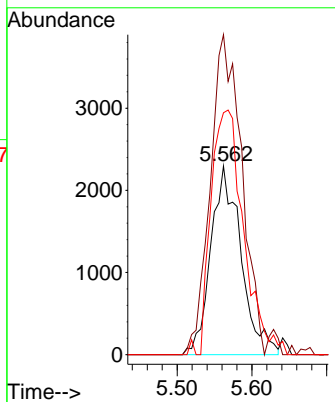
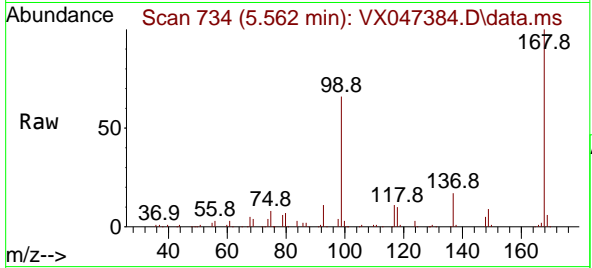


#31
 Cyclohexane
 Concen: 0.983 ug/l
 RT: 5.562 min Scan# 711
 Delta R.T. 0.079 min
 Lab File: VX047384.D
 Acq: 18 Aug 2025 15:57

Instrument : MSVOA_X
 ClientSampleId : TW-88H-W

Tgt Ion: 56 Resp: 6429

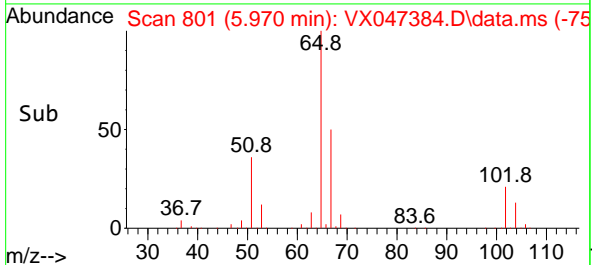
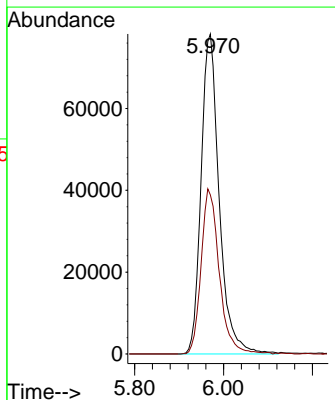
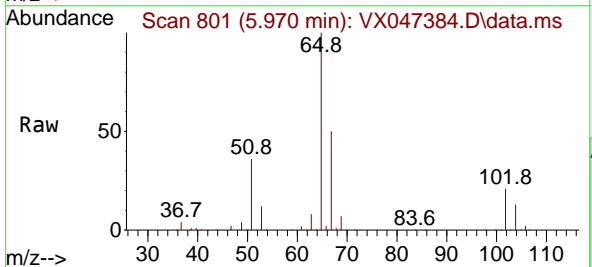
Ion	Ratio	Lower	Upper
56	100		
69	169.6	24.3	36.5#
84	128.2	65.3	97.9#

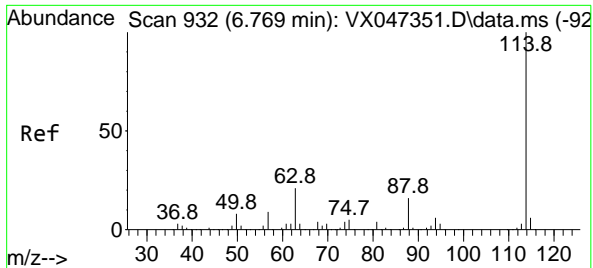


#33
 1,2-Dichloroethane-d4
 Concen: 54.562 ug/l
 RT: 5.970 min Scan# 801
 Delta R.T. 0.006 min
 Lab File: VX047384.D
 Acq: 18 Aug 2025 15:57

Tgt Ion: 65 Resp: 221717

Ion	Ratio	Lower	Upper
65	100		
67	51.8	0.0	106.0



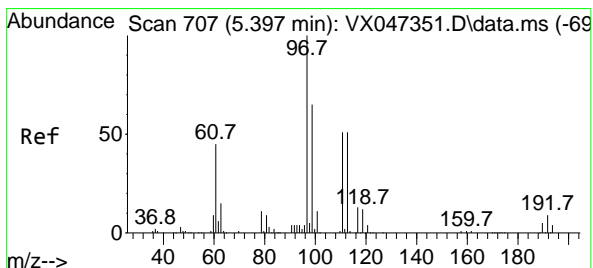
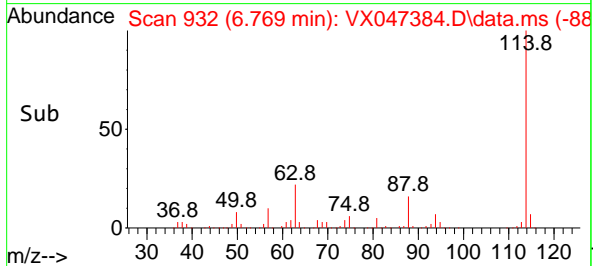
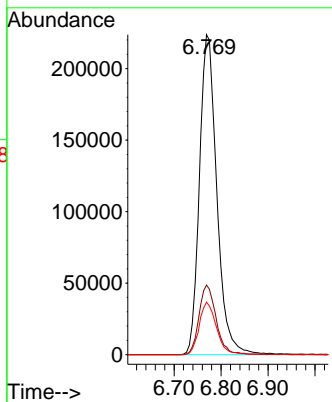
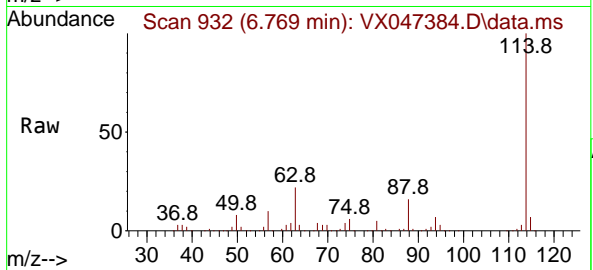


#34
 1,4-Difluorobenzene
 Concen: 50.000 ug/l
 RT: 6.769 min Scan# 91
 Delta R.T. 0.000 min
 Lab File: VX047384.D
 Acq: 18 Aug 2025 15:57

Instrument :
 MSVOA_X
 ClientSampleId :
 TW-88H-W

Tgt Ion:114 Resp: 574943

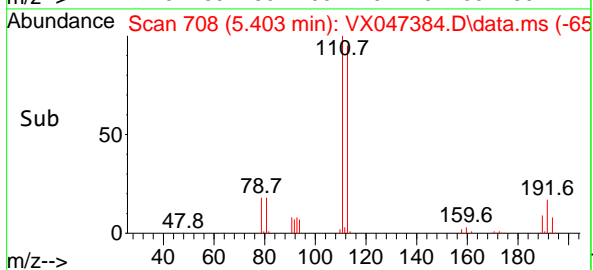
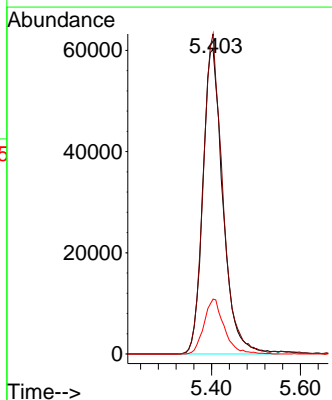
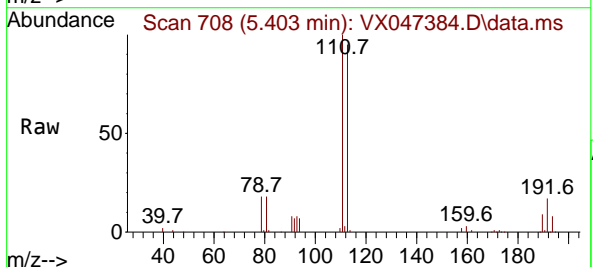
Ion	Ratio	Lower	Upper
114	100		
63	24.7	0.0	42.4
88	16.4	0.0	33.0

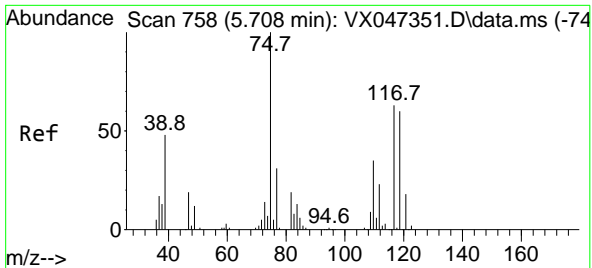


#35
 Dibromofluoromethane
 Concen: 50.922 ug/l
 RT: 5.403 min Scan# 708
 Delta R.T. 0.006 min
 Lab File: VX047384.D
 Acq: 18 Aug 2025 15:57

Tgt Ion:113 Resp: 190013

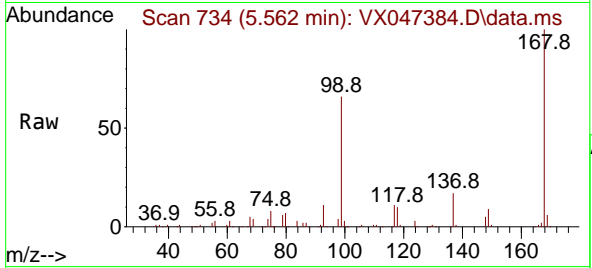
Ion	Ratio	Lower	Upper
113	100		
111	101.8	81.4	122.2
192	18.0	14.1	21.1



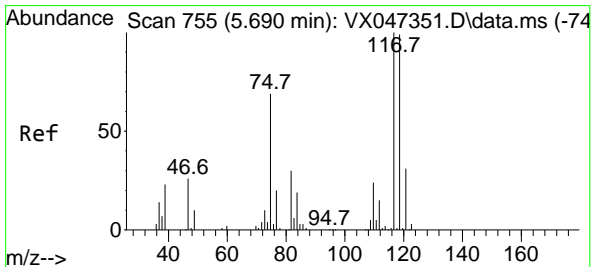
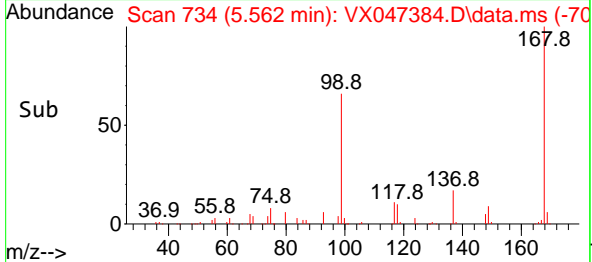
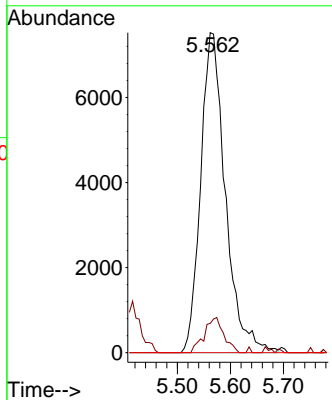


#36
 1,1-Dichloropropene
 Concen: 4.125 ug/l
 RT: 5.562 min Scan# 734
 Delta R.T. -0.146 min
 Lab File: VX047384.D
 Acq: 18 Aug 2025 15:57

Instrument : MSVOA_X
 ClientSampleId : TW-88H-W

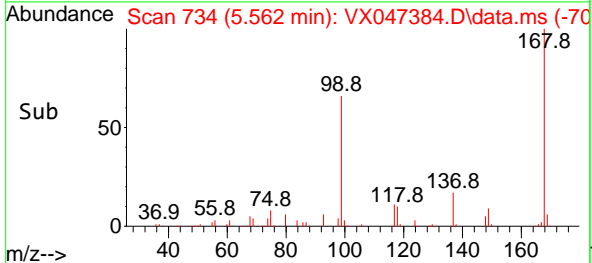
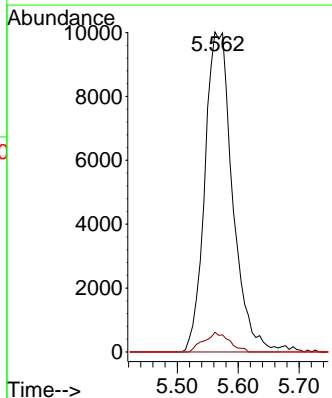
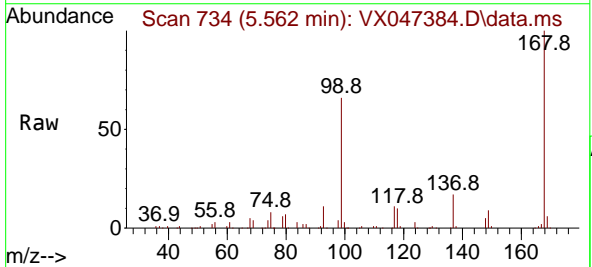


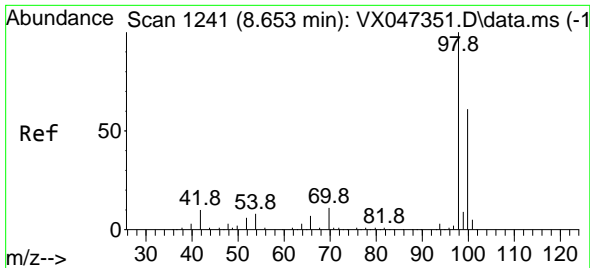
Tgt Ion: 75 Resp: 24295
 Ion Ratio Lower Upper
 75 100
 110 8.7 17.4 52.2#
 77 0.0 24.4 36.6#



#38
 Carbon Tetrachloride
 Concen: 4.901 ug/l
 RT: 5.562 min Scan# 734
 Delta R.T. -0.128 min
 Lab File: VX047384.D
 Acq: 18 Aug 2025 15:57

Tgt Ion: 117 Resp: 31550
 Ion Ratio Lower Upper
 117 100
 119 6.2 78.5 117.7#
 121 0.0 24.7 37.1#

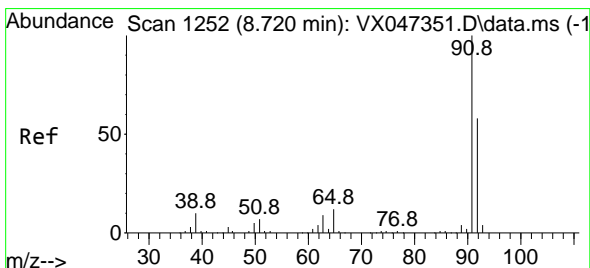
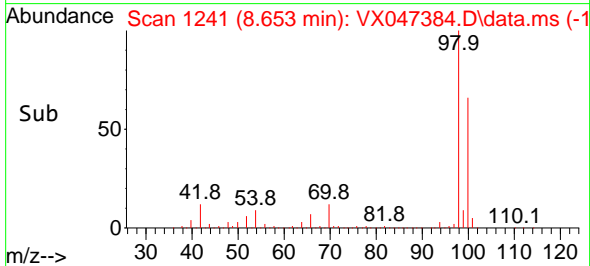
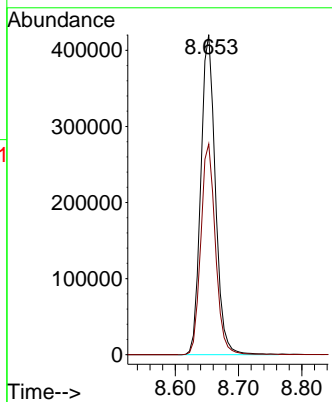
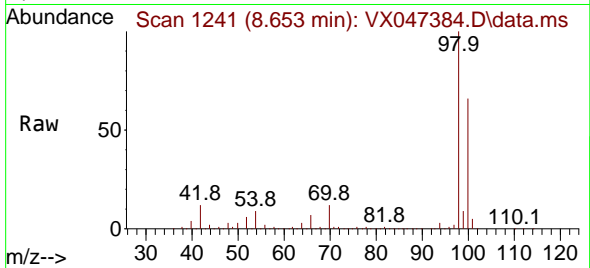




#50
 Toluene-d8
 Concen: 50.614 ug/l
 RT: 8.653 min Scan# 1241
 Delta R.T. 0.000 min
 Lab File: VX047384.D
 Acq: 18 Aug 2025 15:57

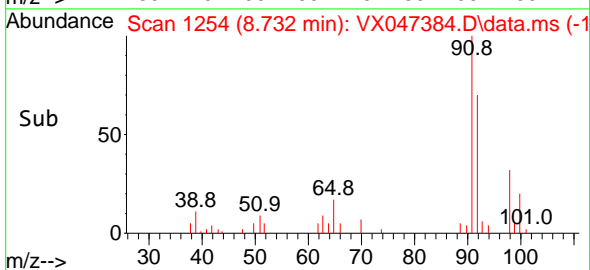
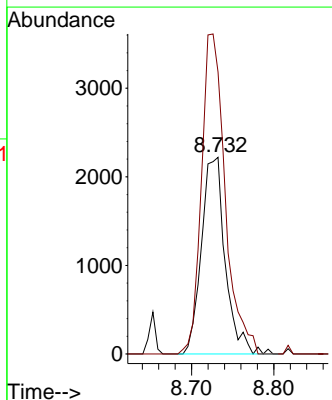
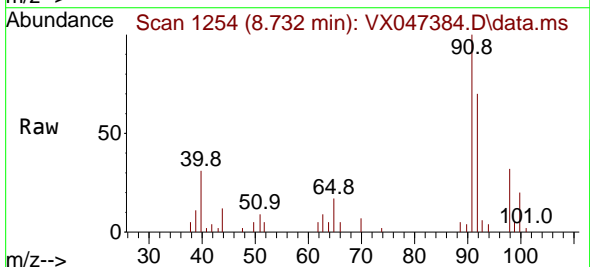
Instrument : MSVOA_X
 ClientSampleId : TW-88H-W

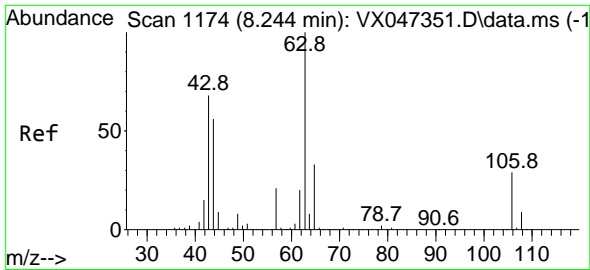
Tgt Ion: 98 Resp: 675048
 Ion Ratio Lower Upper
 98 100
 100 66.0 53.9 80.9



#52
 Toluene
 Concen: 0.410 ug/l
 RT: 8.732 min Scan# 1254
 Delta R.T. 0.012 min
 Lab File: VX047384.D
 Acq: 18 Aug 2025 15:57

Tgt Ion: 92 Resp: 4470
 Ion Ratio Lower Upper
 92 100
 91 162.3 136.3 204.5

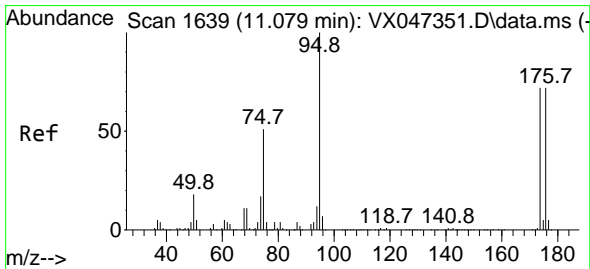
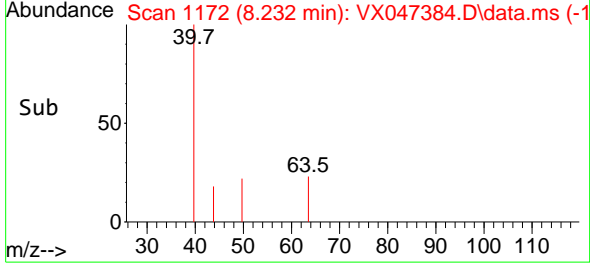
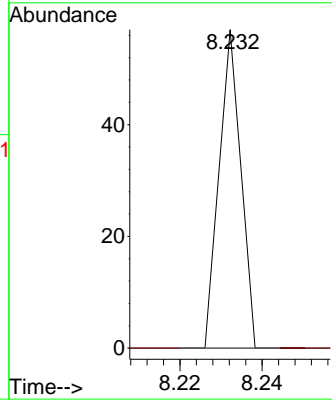
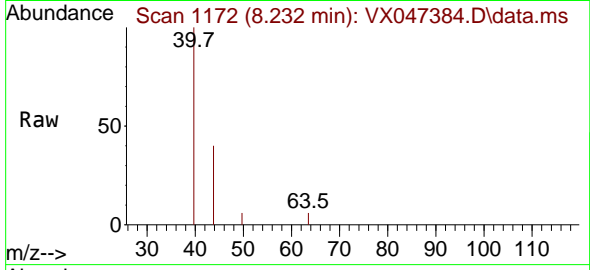




#58
 2-Chloroethyl Vinyl ether
 Concen: 8.362 ug/l
 RT: 8.232 min Scan# 1172
 Delta R.T. -0.012 min
 Lab File: VX047384.D
 Acq: 18 Aug 2025 15:57

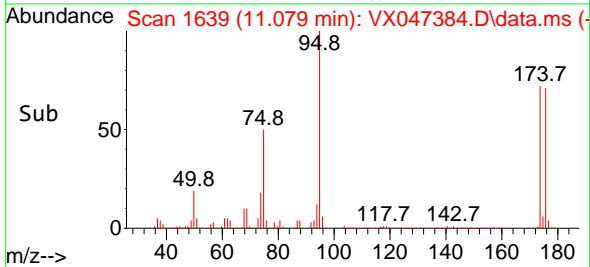
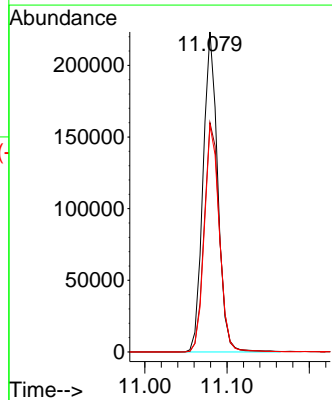
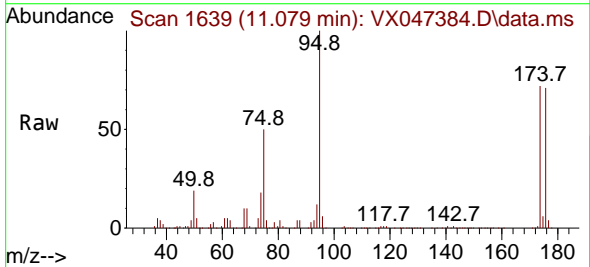
Instrument : MSVOA_X
 ClientSampleId : TW-88H-W

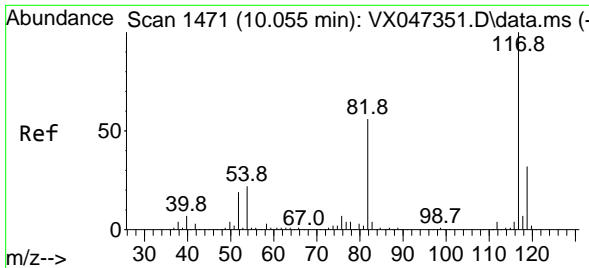
Tgt Ion: 63 Resp: 21
 Ion Ratio Lower Upper
 63 100
 106 0.0 22.8 34.2#



#62
 4-Bromofluorobenzene
 Concen: 56.262 ug/l
 RT: 11.079 min Scan# 1639
 Delta R.T. 0.000 min
 Lab File: VX047384.D
 Acq: 18 Aug 2025 15:57

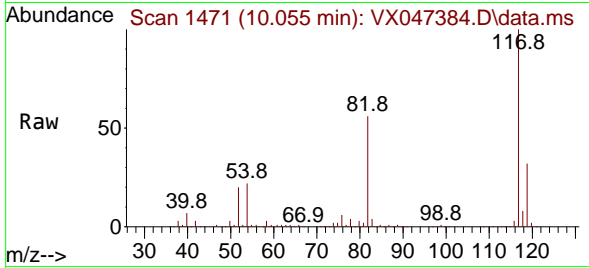
Tgt Ion: 95 Resp: 276904
 Ion Ratio Lower Upper
 95 100
 174 74.3 0.0 148.0
 176 72.4 0.0 145.4





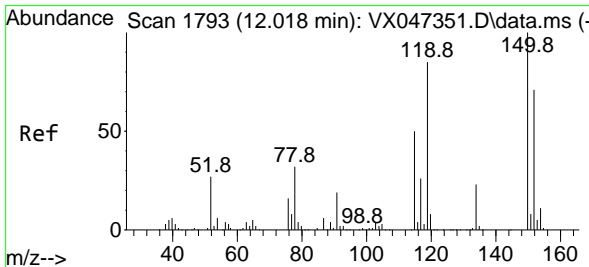
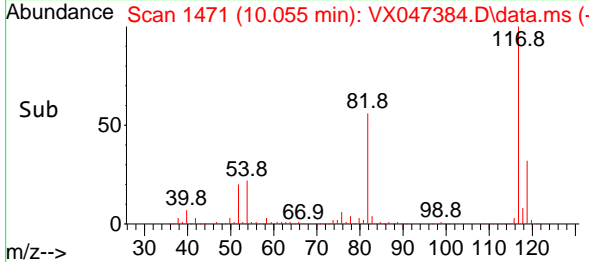
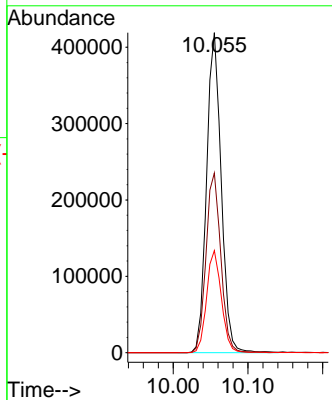
#63
 Chlorobenzene-d5
 Concen: 50.000 ug/l
 RT: 10.055 min Scan# 14
 Delta R.T. 0.000 min
 Lab File: VX047384.D
 Acq: 18 Aug 2025 15:57

Instrument :
 MSVOA_X
 ClientSampleId :
 TW-88H-W



Tgt Ion:117 Resp: 568154

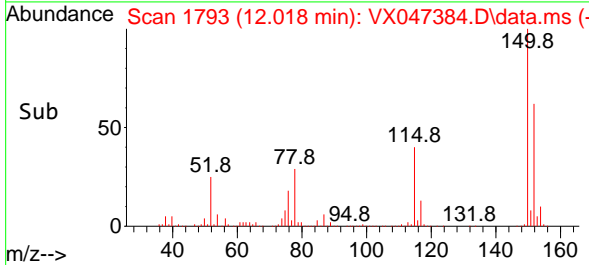
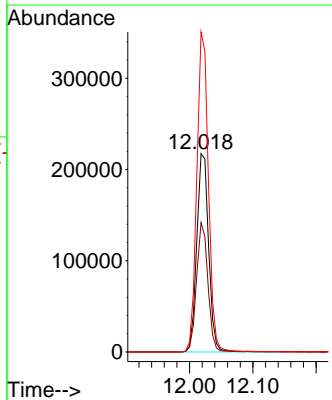
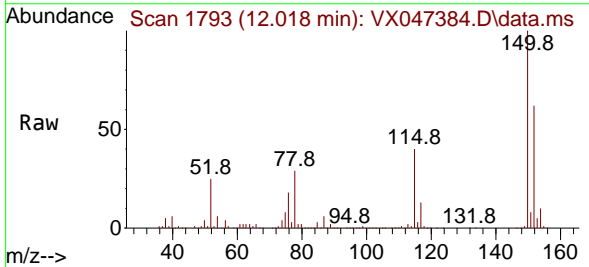
Ion	Ratio	Lower	Upper
117	100		
82	56.2	45.0	67.4
119	31.9	25.8	38.8

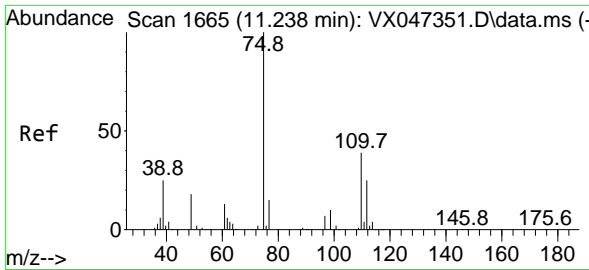


#72
 1,4-Dichlorobenzene-d4
 Concen: 50.000 ug/l
 RT: 12.018 min Scan# 1793
 Delta R.T. 0.000 min
 Lab File: VX047384.D
 Acq: 18 Aug 2025 15:57

Tgt Ion:152 Resp: 285001

Ion	Ratio	Lower	Upper
152	100		
115	62.5	44.6	133.8
150	157.9	0.0	349.8

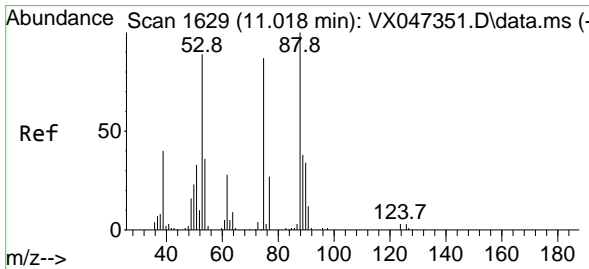
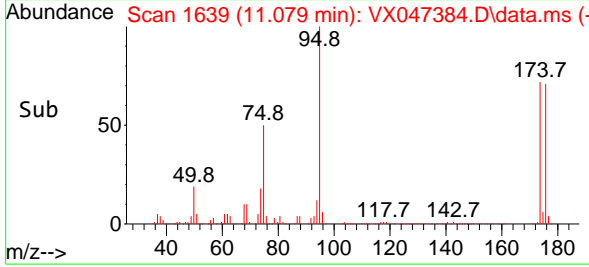
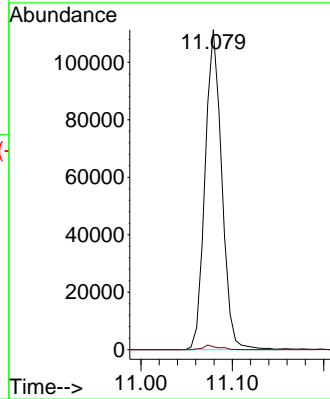
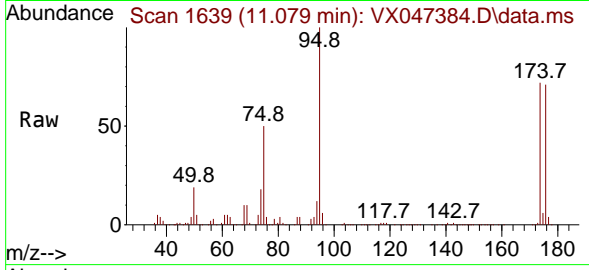




#76
 1,2,3-Trichloropropane
 Concen: 27.015 ug/l
 RT: 11.079 min Scan# 1639
 Delta R.T. -0.158 min
 Lab File: VX047384.D
 Acq: 18 Aug 2025 15:57

Instrument : MSVOA_X
 ClientSampleId : TW-88H-W

Tgt Ion: 75 Resp: 141214
 Ion Ratio Lower Upper
 75 100
 77 1.3 19.4 58.2#



#81
 trans-1,4-Dichloro-2-butene
 Concen: 106.823 ug/l
 RT: 11.079 min Scan# 1639
 Delta R.T. 0.061 min
 Lab File: VX047384.D
 Acq: 18 Aug 2025 15:57

Tgt Ion: 75 Resp: 141214
 Ion Ratio Lower Upper
 75 100
 53 0.0 85.2 127.8#
 89 0.0 36.7 55.1#

