

Data Path : Z:\voasrv\HPCHEM1\MSVOA_X\Data\VX081825\
 Data File : VX047385.D
 Acq On : 18 Aug 2025 16:18
 Operator : JC/MD
 Sample : Q2815-10RE
 Misc : 5.0mL/MSVOA_X/WATER
 ALS Vial : 16 Sample Multiplier: 1

Instrument :
 MSVOA_X
ClientSampleId :
 TW-88H-S

Quant Time: Aug 19 01:45:11 2025
 Quant Method : Z:\voasrv\HPCHEM1\MSVOA_X\Method\82X081525W.M
 Quant Title : SW846 8260
 QLast Update : Mon Aug 18 04:18:28 2025
 Response via : Initial Calibration

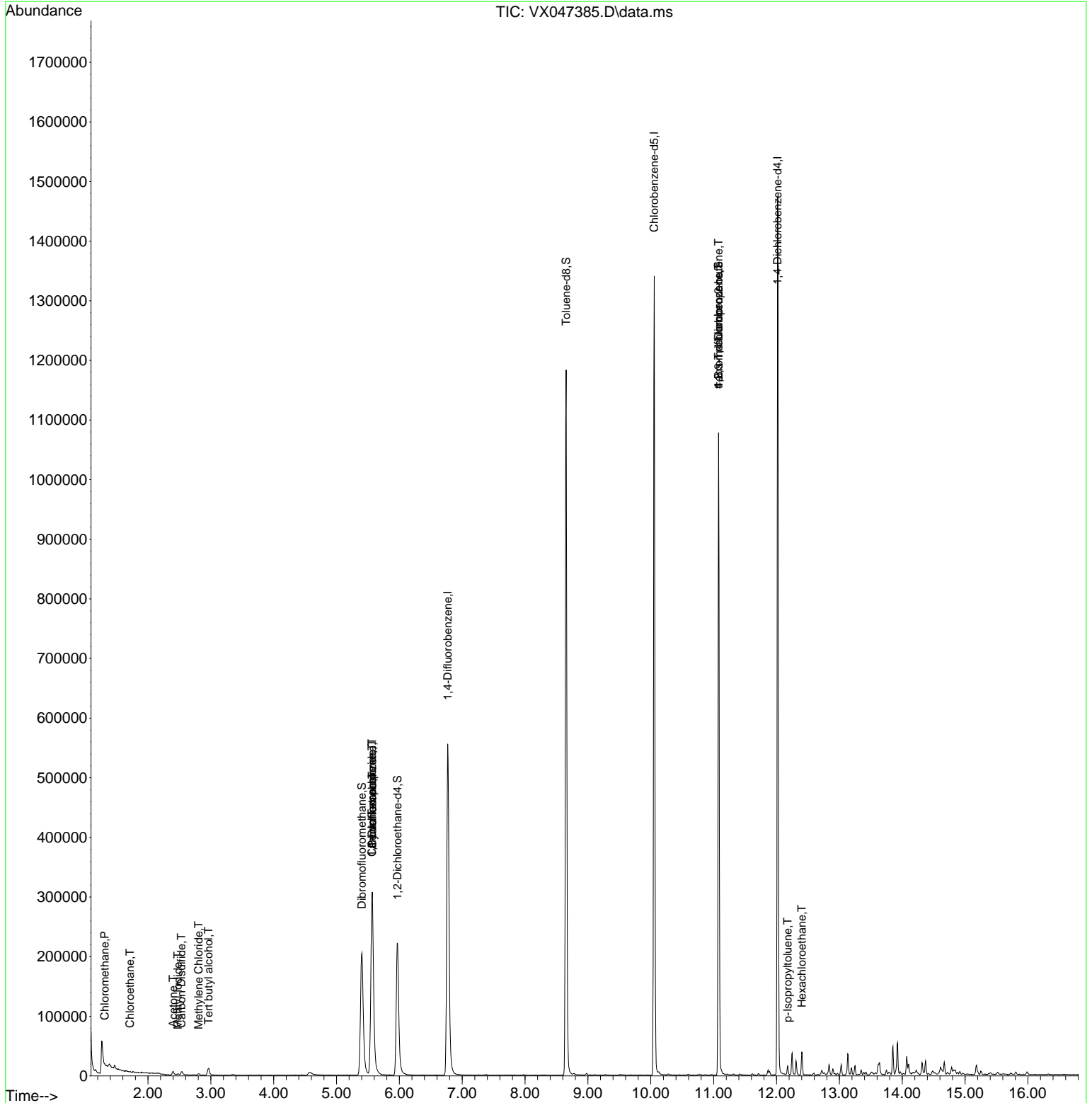
Compound	R.T.	QIon	Response	Conc	Units	Dev(Min)
Internal Standards						
1) Pentafluorobenzene	5.568	168	302438	50.000	ug/l	0.00
34) 1,4-Difluorobenzene	6.769	114	598959	50.000	ug/l	0.00
63) Chlorobenzene-d5	10.055	117	585621	50.000	ug/l	0.00
72) 1,4-Dichlorobenzene-d4	12.018	152	291956	50.000	ug/l	0.00
System Monitoring Compounds						
33) 1,2-Dichloroethane-d4	5.970	65	234397	55.377	ug/l	0.00
Spiked Amount	50.000	Range 78 - 117	Recovery	=	110.760%	
35) Dibromofluoromethane	5.403	113	196800	50.626	ug/l	0.00
Spiked Amount	50.000	Range 75 - 124	Recovery	=	101.260%	
50) Toluene-d8	8.653	98	700819	50.439	ug/l	0.00
Spiked Amount	50.000	Range 92 - 112	Recovery	=	100.880%	
62) 4-Bromofluorobenzene	11.079	95	286348	55.848	ug/l	0.00
Spiked Amount	50.000	Range 83 - 123	Recovery	=	111.700%	
Target Compounds						
						Qvalue
3) Chloromethane	1.312	50	862	0.249	ug/l #	84
6) Chloroethane	1.715	64	974	0.366	ug/l #	80
10) Methyl Iodide	2.477	142	2010	0.314	ug/l #	73
11) Tert butyl alcohol	2.965	59	6480	17.598	ug/l #	75
16) Acetone	2.398	43	9034	5.678	ug/l	97
17) Carbon Disulfide	2.532	76	4734	0.412	ug/l #	93
20) Methylene Chloride	2.806	84	1239	0.294	ug/l #	75
31) Cyclohexane	5.568	56	7057	1.036	ug/l #	5
36) 1,1-Dichloropropene	5.562	75	25659	4.181	ug/l #	50
38) Carbon Tetrachloride	5.562	117	32309	4.818	ug/l #	15
76) 1,2,3-Trichloropropane	11.079	75	151021	28.203	ug/l #	38
81) trans-1,4-Dichloro-2-b...	11.079	75	151021	111.174	ug/l #	7
86) p-Isopropyltoluene	12.176	119	5486	0.279	ug/l	95
90) Hexachloroethane	12.402	117	2583	0.749	ug/l #	15

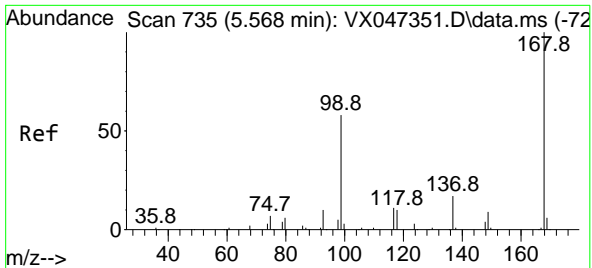
(#) = qualifier out of range (m) = manual integration (+) = signals summed

Data Path : Z:\voasrv\HPCHEM1\MSVOA_X\Data\VX081825\
 Data File : VX047385.D
 Acq On : 18 Aug 2025 16:18
 Operator : JC/MD
 Sample : Q2815-10RE
 Misc : 5.0mL/MSVOA_X/WATER
 ALS Vial : 16 Sample Multiplier: 1

Instrument :
 MSVOA_X
ClientSampleId :
 TW-88H-S

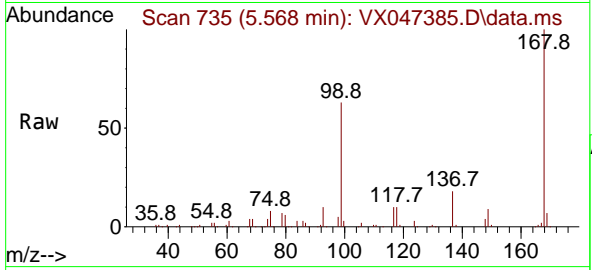
Quant Time: Aug 19 01:45:11 2025
 Quant Method : Z:\voasrv\HPCHEM1\MSVOA_X\Method\82X081525W.M
 Quant Title : SW846 8260
 QLast Update : Mon Aug 18 04:18:28 2025
 Response via : Initial Calibration



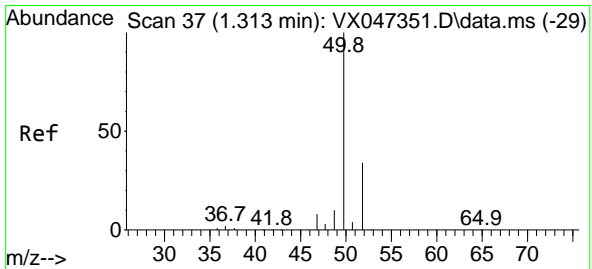
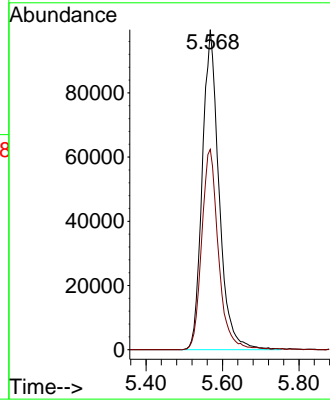
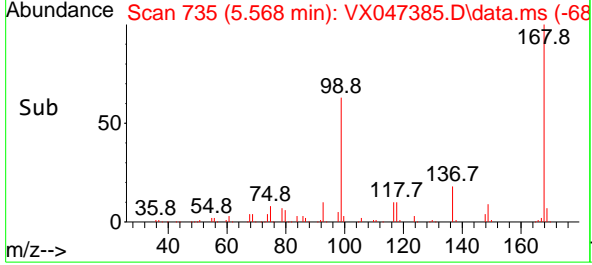


#1
 Pentafluorobenzene
 Concen: 50.000 ug/l
 RT: 5.568 min Scan# 71
 Delta R.T. -0.000 min
 Lab File: VX047385.D
 Acq: 18 Aug 2025 16:18

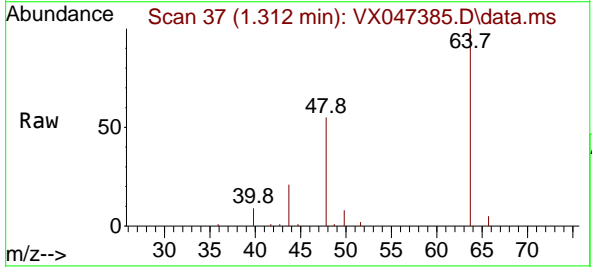
Instrument :
 MSVOA_X
 ClientSampleId :
 TW-88H-S



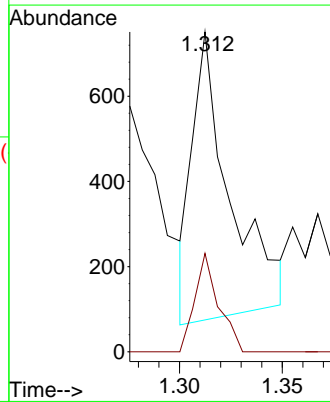
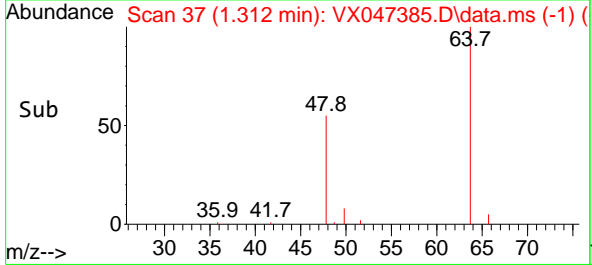
Tgt Ion:168 Resp: 302438
 Ion Ratio Lower Upper
 168 100
 99 62.6 47.9 71.9

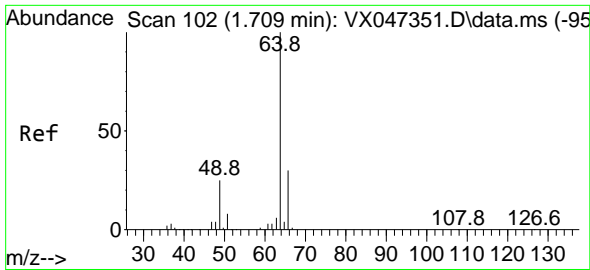


#3
 Chloromethane
 Concen: 0.249 ug/l
 RT: 1.312 min Scan# 37
 Delta R.T. -0.000 min
 Lab File: VX047385.D
 Acq: 18 Aug 2025 16:18



Tgt Ion: 50 Resp: 862
 Ion Ratio Lower Upper
 50 100
 52 43.1 27.0 40.4#

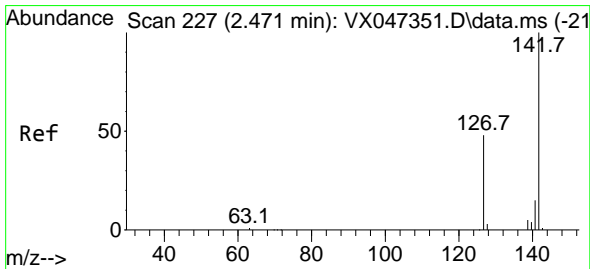
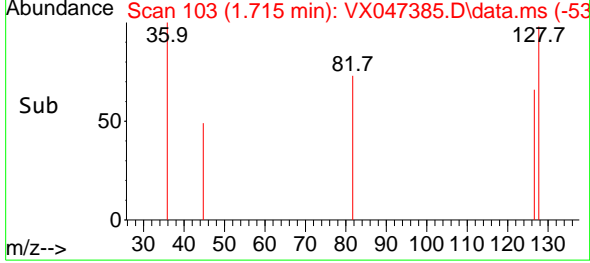
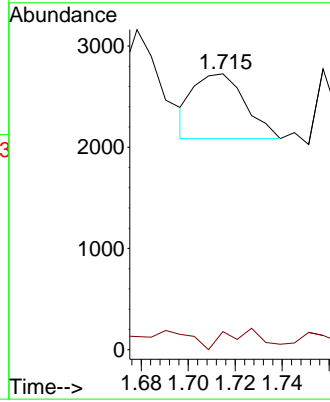
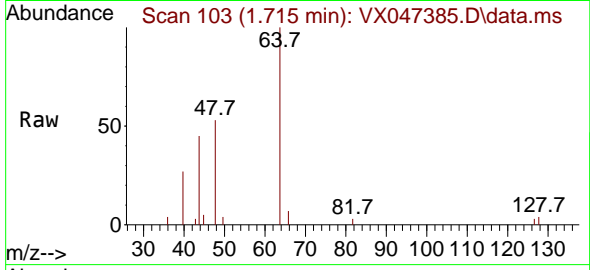




#6
 Chloroethane
 Concen: 0.366 ug/l
 RT: 1.715 min Scan# 10
 Delta R.T. 0.006 min
 Lab File: VX047385.D
 Acq: 18 Aug 2025 16:18

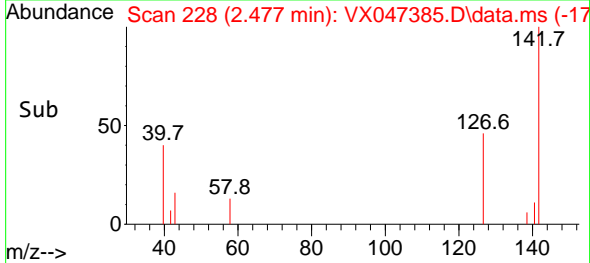
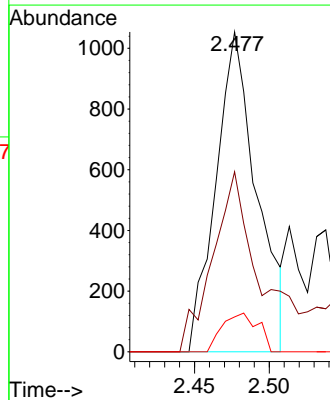
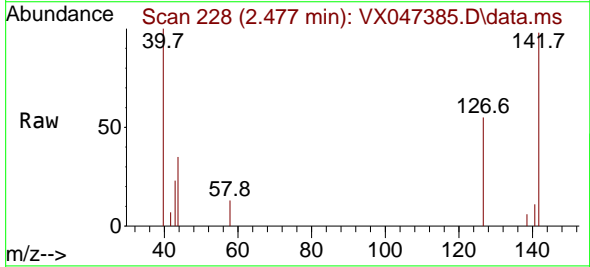
Instrument : MSVOA_X
 ClientSampleId : TW-88H-S

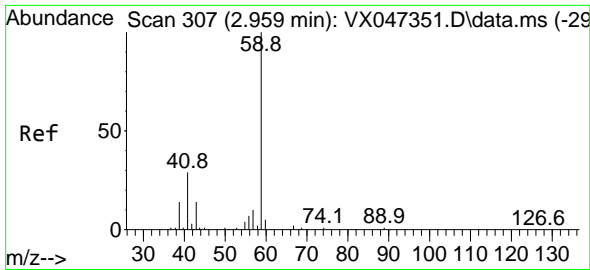
Tgt Ion: 64 Resp: 974
 Ion Ratio Lower Upper
 64 100
 66 19.4 24.4 36.6#



#10
 Methyl Iodide
 Concen: 0.314 ug/l
 RT: 2.477 min Scan# 228
 Delta R.T. 0.006 min
 Lab File: VX047385.D
 Acq: 18 Aug 2025 16:18

Tgt Ion:142 Resp: 2010
 Ion Ratio Lower Upper
 142 100
 127 66.4 36.1 54.1#
 141 10.6 11.1 16.7#

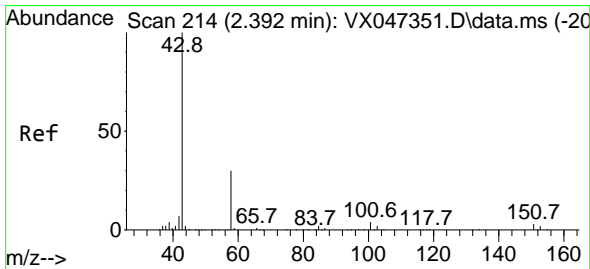
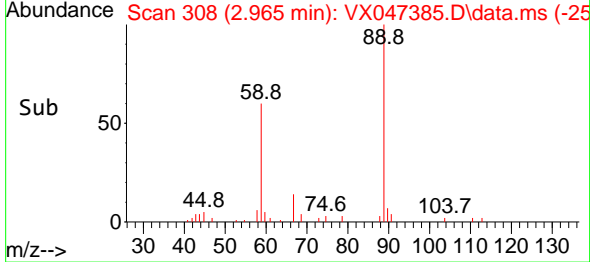
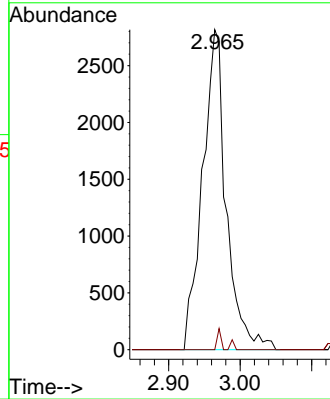
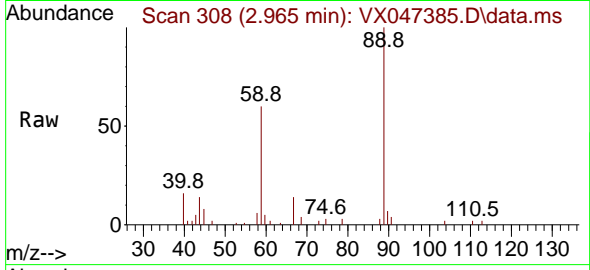




#11
 Tert butyl alcohol
 Concen: 17.598 ug/l
 RT: 2.965 min Scan# 30
 Delta R.T. 0.006 min
 Lab File: VX047385.D
 Acq: 18 Aug 2025 16:18

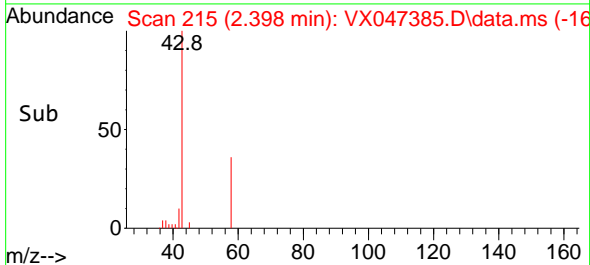
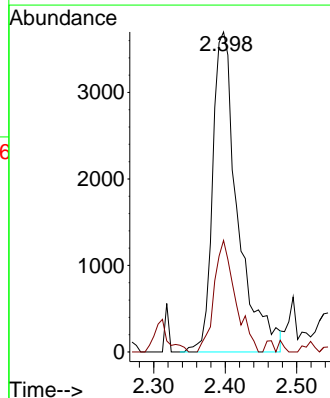
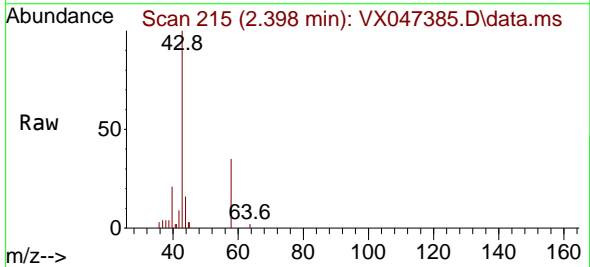
Instrument : MSVOA_X
 ClientSampleId : TW-88H-S

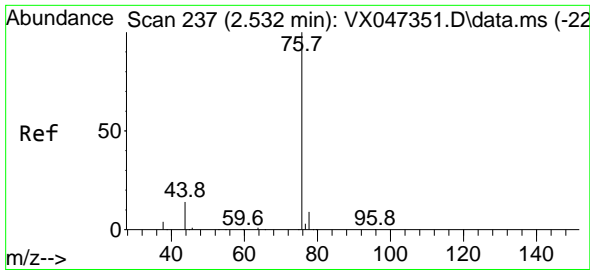
Tgt Ion: 59 Resp: 6480
 Ion Ratio Lower Upper
 59 100
 57 1.0 8.3 12.5#



#16
 Acetone
 Concen: 5.678 ug/l
 RT: 2.398 min Scan# 215
 Delta R.T. 0.006 min
 Lab File: VX047385.D
 Acq: 18 Aug 2025 16:18

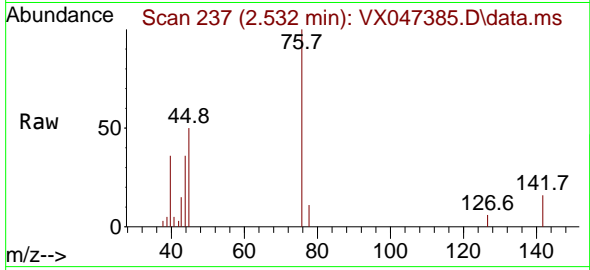
Tgt Ion: 43 Resp: 9034
 Ion Ratio Lower Upper
 43 100
 58 32.8 24.8 37.2



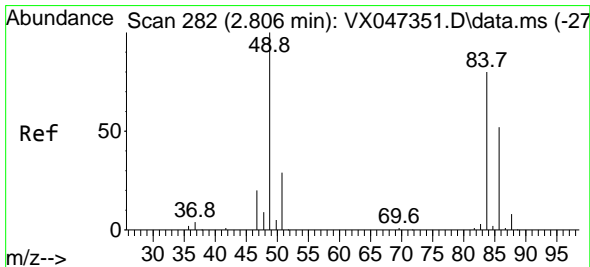
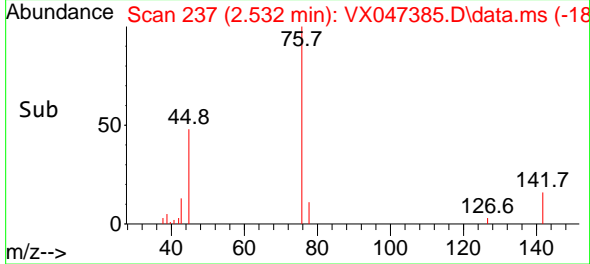
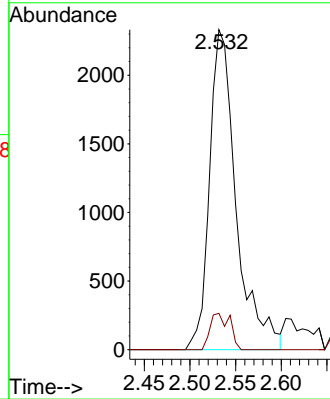


#17
 Carbon Disulfide
 Concen: 0.412 ug/l
 RT: 2.532 min Scan# 21
 Delta R.T. -0.000 min
 Lab File: VX047385.D
 Acq: 18 Aug 2025 16:18

Instrument : MSVOA_X
 Client Sample Id : TW-88H-S

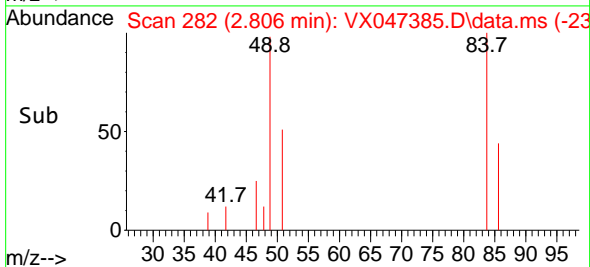
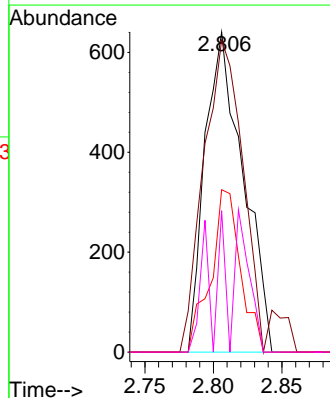
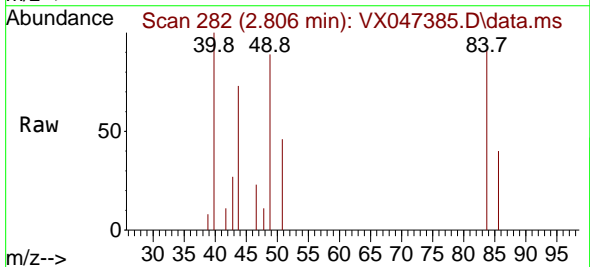


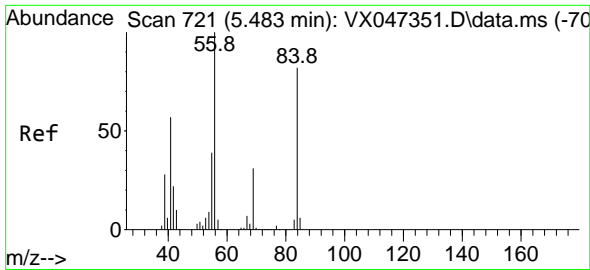
Tgt Ion: 76 Resp: 4734
 Ion Ratio Lower Upper
 76 100
 78 11.4 7.2 10.8#



#20
 Methylene Chloride
 Concen: 0.294 ug/l
 RT: 2.806 min Scan# 282
 Delta R.T. -0.000 min
 Lab File: VX047385.D
 Acq: 18 Aug 2025 16:18

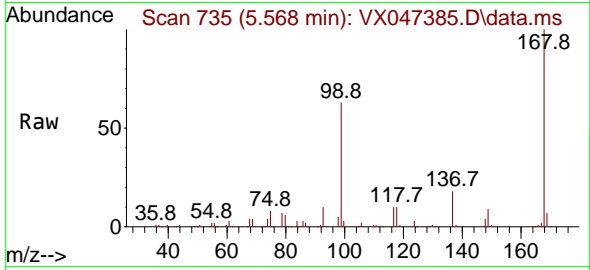
Tgt Ion: 84 Resp: 1239
 Ion Ratio Lower Upper
 84 100
 49 97.5 100.1 150.1#
 51 50.7 29.5 44.3#
 86 44.1 51.8 77.8#



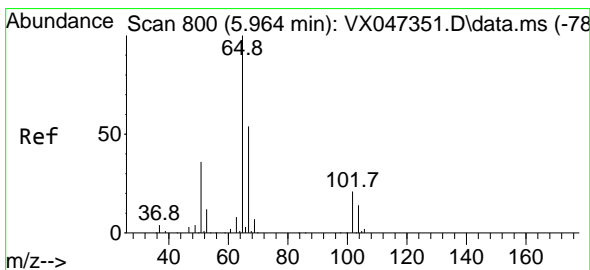
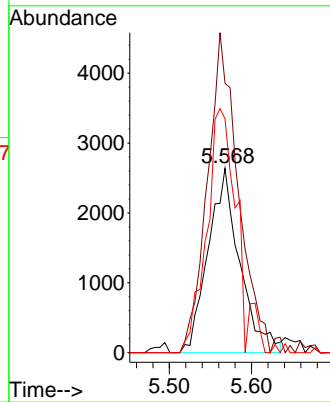
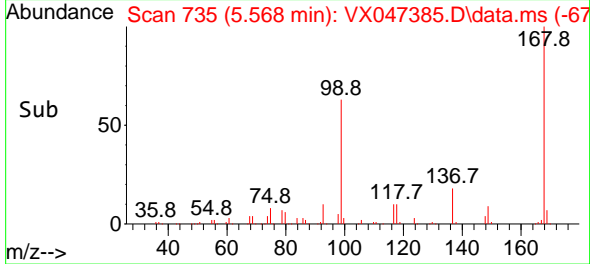


#31
 Cyclohexane
 Concen: 1.036 ug/l
 RT: 5.568 min Scan# 71
 Delta R.T. 0.085 min
 Lab File: VX047385.D
 Acq: 18 Aug 2025 16:18

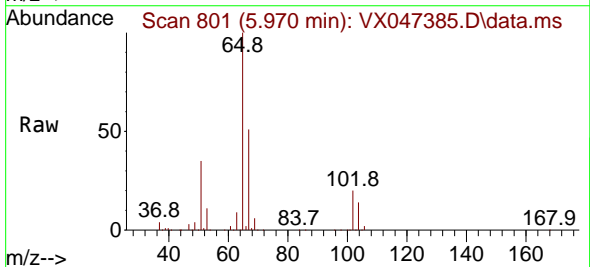
Instrument : MSVOA_X
 ClientSampleId : TW-88H-S



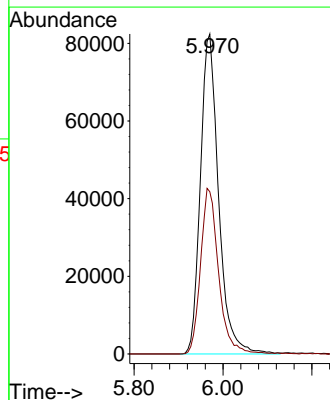
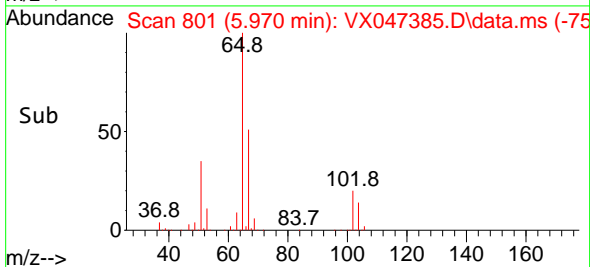
Tgt Ion: 56 Resp: 7057
 Ion Ratio Lower Upper
 56 100
 69 146.1 24.3 36.5#
 84 126.9 65.3 97.9#

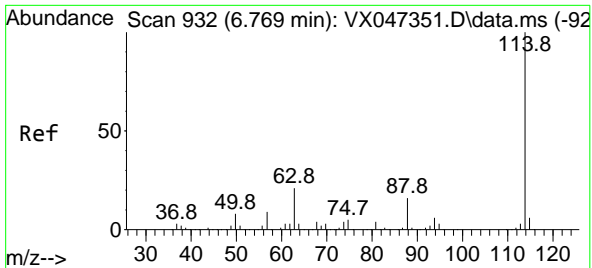


#33
 1,2-Dichloroethane-d4
 Concen: 55.377 ug/l
 RT: 5.970 min Scan# 801
 Delta R.T. 0.006 min
 Lab File: VX047385.D
 Acq: 18 Aug 2025 16:18



Tgt Ion: 65 Resp: 234397
 Ion Ratio Lower Upper
 65 100
 67 51.4 0.0 106.0



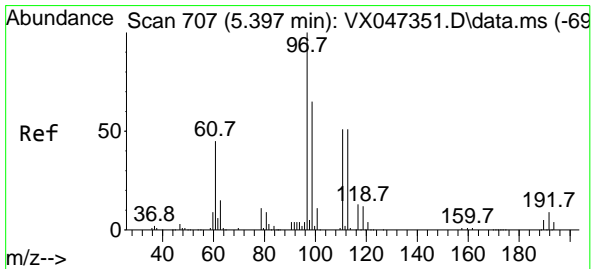
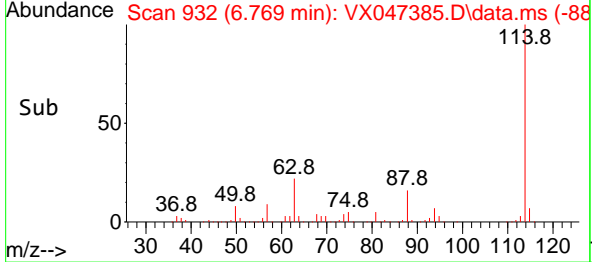
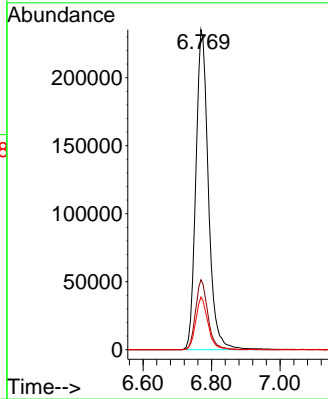
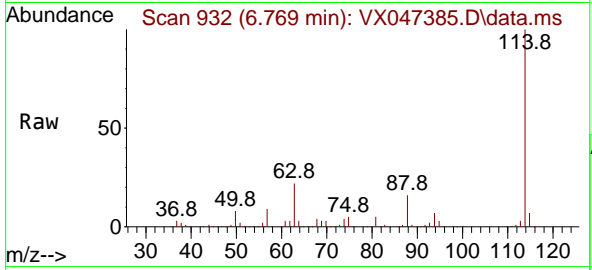


#34
 1,4-Difluorobenzene
 Concen: 50.000 ug/l
 RT: 6.769 min Scan# 91
 Delta R.T. -0.000 min
 Lab File: VX047385.D
 Acq: 18 Aug 2025 16:18

Instrument :
 MSVOA_X
 ClientSampleId :
 TW-88H-S

Tgt Ion:114 Resp: 598959

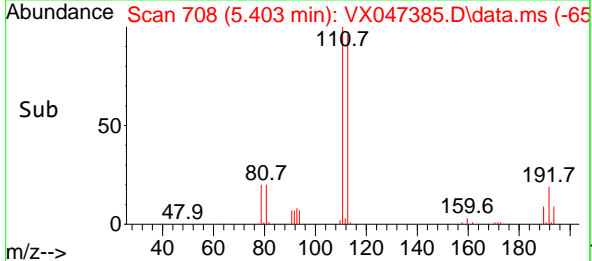
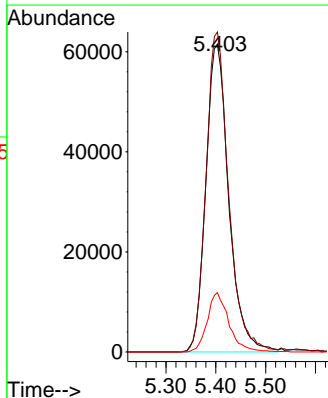
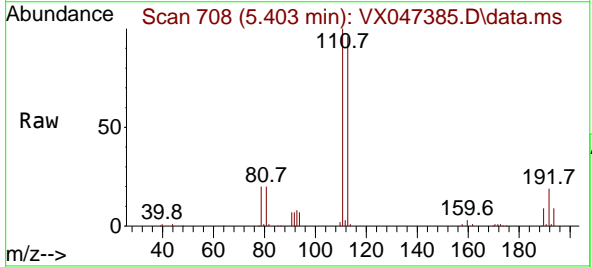
Ion	Ratio	Lower	Upper
114	100		
63	21.9	0.0	42.4
88	16.4	0.0	33.0

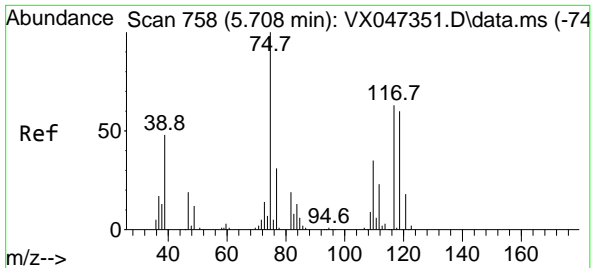


#35
 Dibromofluoromethane
 Concen: 50.626 ug/l
 RT: 5.403 min Scan# 708
 Delta R.T. 0.006 min
 Lab File: VX047385.D
 Acq: 18 Aug 2025 16:18

Tgt Ion:113 Resp: 196800

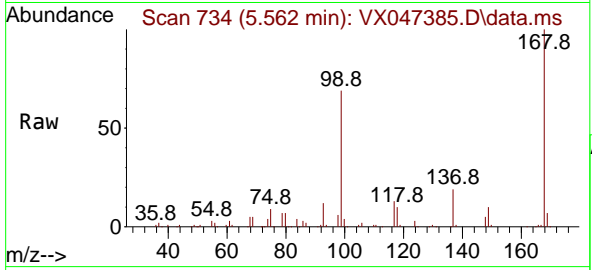
Ion	Ratio	Lower	Upper
113	100		
111	102.3	81.4	122.2
192	18.2	14.1	21.1



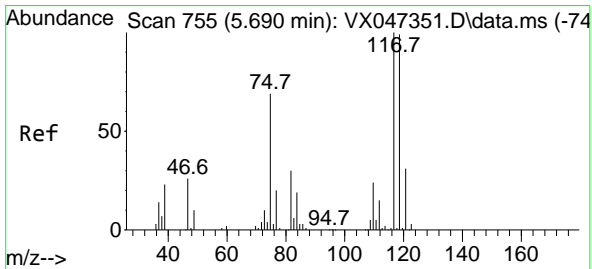
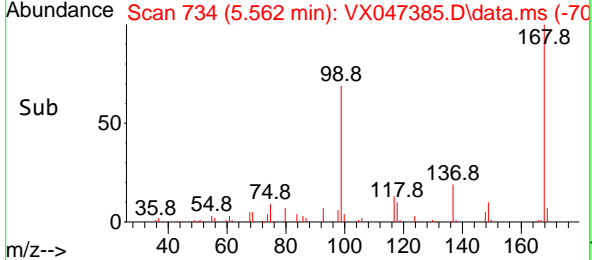
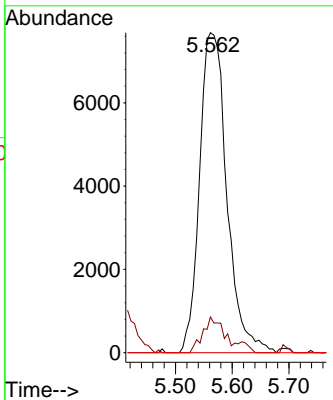


#36
 1,1-Dichloropropene
 Concen: 4.181 ug/l
 RT: 5.562 min Scan# 711
 Delta R.T. -0.147 min
 Lab File: VX047385.D
 Acq: 18 Aug 2025 16:18

Instrument : MSVOA_X
 ClientSampleId : TW-88H-S

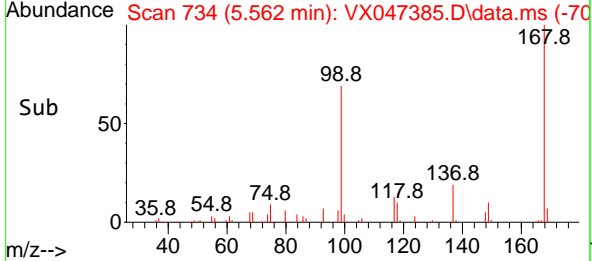
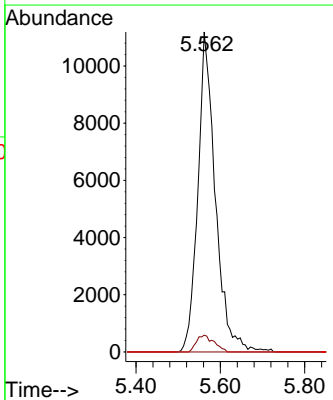
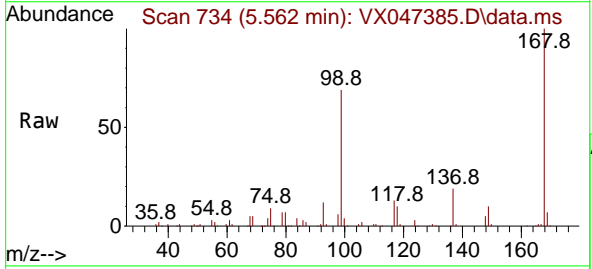


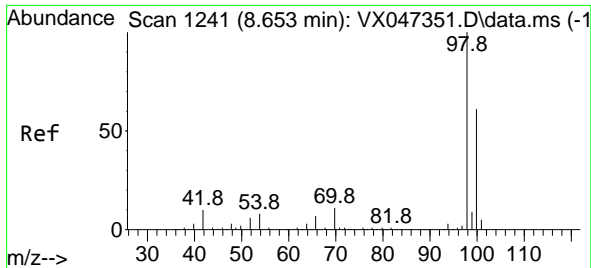
Tgt Ion: 75 Resp: 25659
 Ion Ratio Lower Upper
 75 100
 110 8.8 17.4 52.2#
 77 0.0 24.4 36.6#



#38
 Carbon Tetrachloride
 Concen: 4.818 ug/l
 RT: 5.562 min Scan# 734
 Delta R.T. -0.128 min
 Lab File: VX047385.D
 Acq: 18 Aug 2025 16:18

Tgt Ion: 117 Resp: 32309
 Ion Ratio Lower Upper
 117 100
 119 5.3 78.5 117.7#
 121 0.0 24.7 37.1#

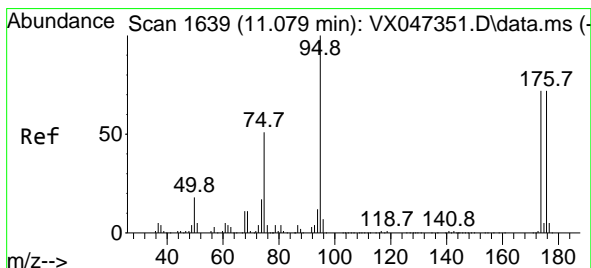
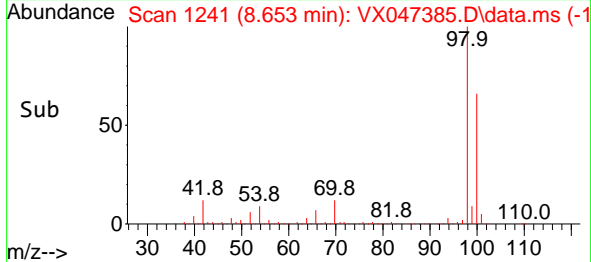
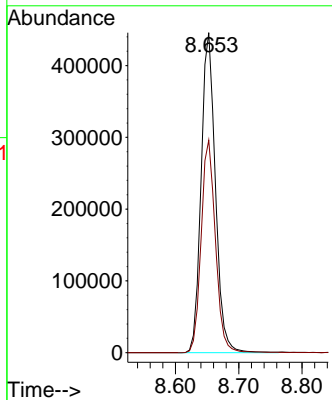
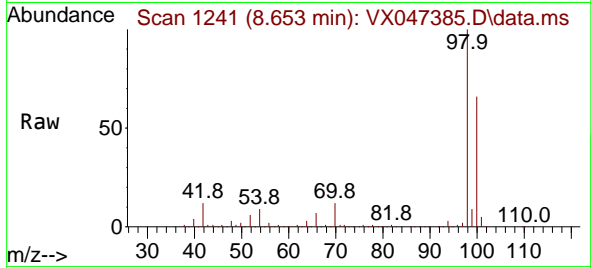




#50
 Toluene-d8
 Concen: 50.439 ug/l
 RT: 8.653 min Scan# 1241
 Delta R.T. -0.000 min
 Lab File: VX047385.D
 Acq: 18 Aug 2025 16:18

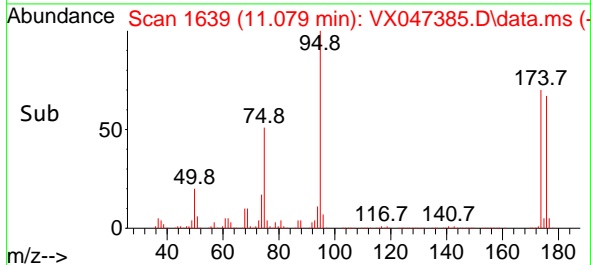
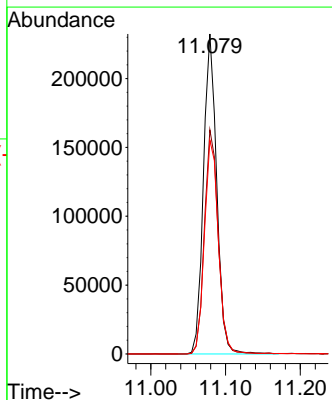
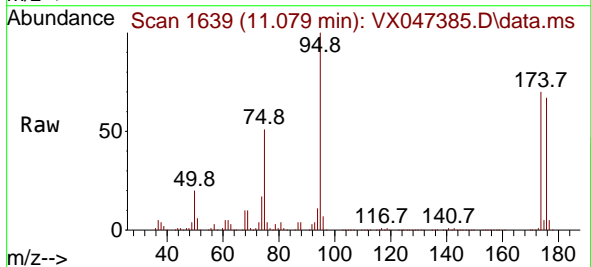
Instrument : MSVOA_X
 ClientSampleId : TW-88H-S

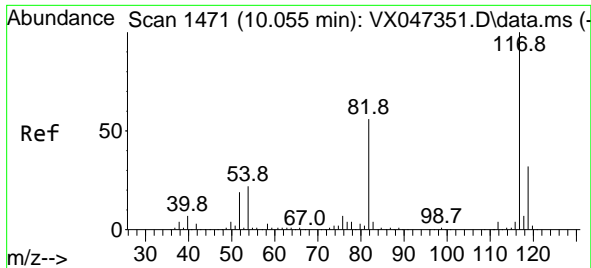
Tgt Ion: 98 Resp: 700819
 Ion Ratio Lower Upper
 98 100
 100 66.5 53.9 80.9



#62
 4-Bromofluorobenzene
 Concen: 55.848 ug/l
 RT: 11.079 min Scan# 1639
 Delta R.T. -0.000 min
 Lab File: VX047385.D
 Acq: 18 Aug 2025 16:18

Tgt Ion: 95 Resp: 286348
 Ion Ratio Lower Upper
 95 100
 174 72.6 0.0 148.0
 176 70.2 0.0 145.4



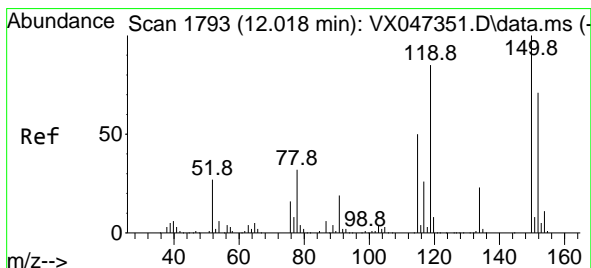
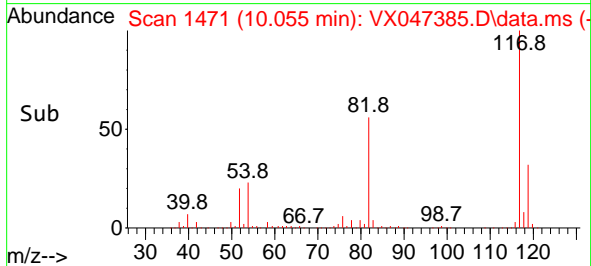
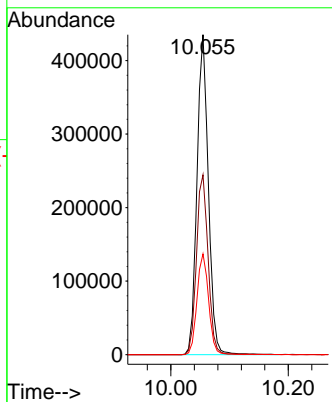
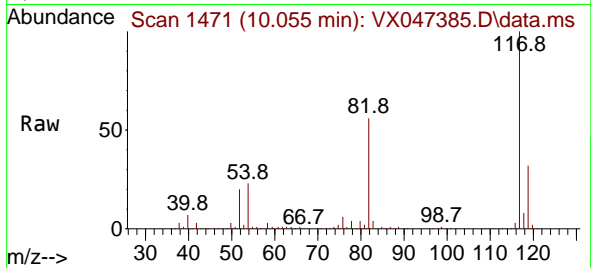


#63
 Chlorobenzene-d5
 Concen: 50.000 ug/l
 RT: 10.055 min Scan# 14
 Delta R.T. -0.000 min
 Lab File: VX047385.D
 Acq: 18 Aug 2025 16:18

Instrument :
 MSVOA_X
 ClientSampleId :
 TW-88H-S

Tgt Ion:117 Resp: 585621

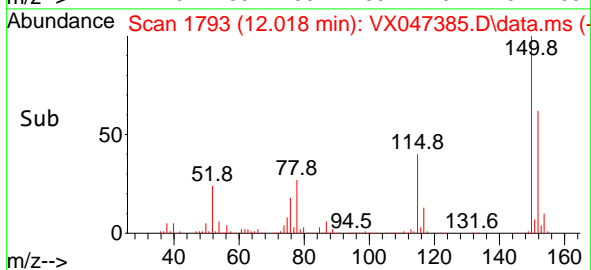
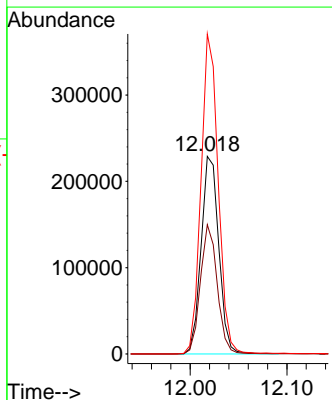
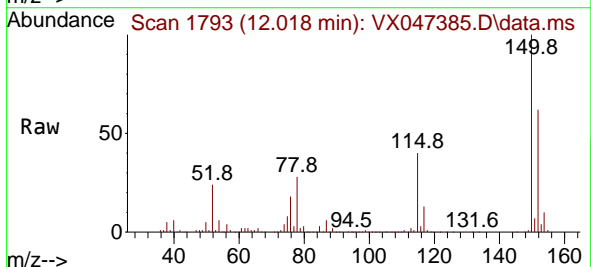
Ion	Ratio	Lower	Upper
117	100		
82	56.2	45.0	67.4
119	31.5	25.8	38.8

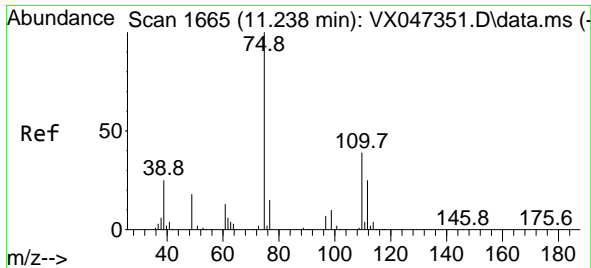


#72
 1,4-Dichlorobenzene-d4
 Concen: 50.000 ug/l
 RT: 12.018 min Scan# 1793
 Delta R.T. -0.000 min
 Lab File: VX047385.D
 Acq: 18 Aug 2025 16:18

Tgt Ion:152 Resp: 291956

Ion	Ratio	Lower	Upper
152	100		
115	62.4	44.6	133.8
150	157.5	0.0	349.8

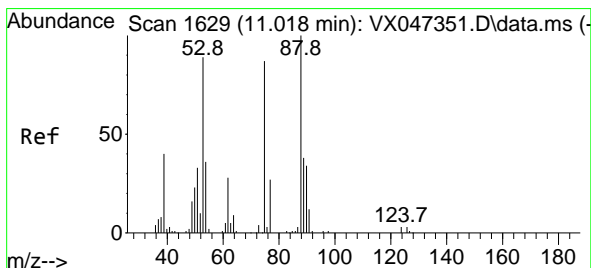
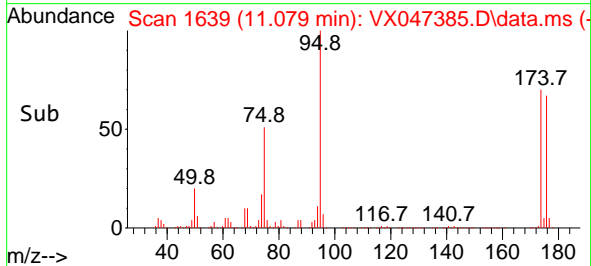
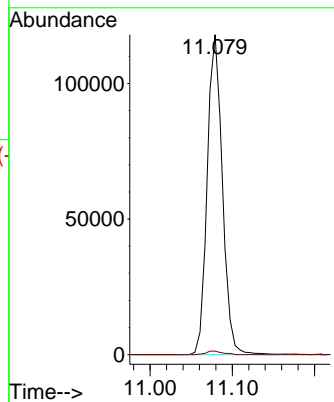
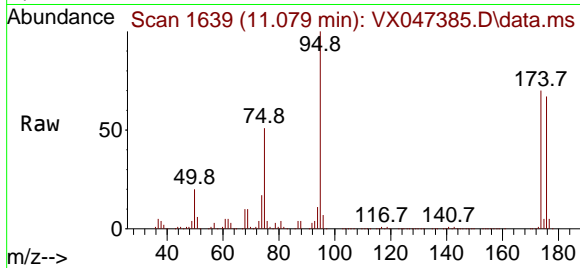




#76
 1,2,3-Trichloropropane
 Concen: 28.203 ug/l
 RT: 11.079 min Scan# 1639
 Delta R.T. -0.159 min
 Lab File: VX047385.D
 Acq: 18 Aug 2025 16:18

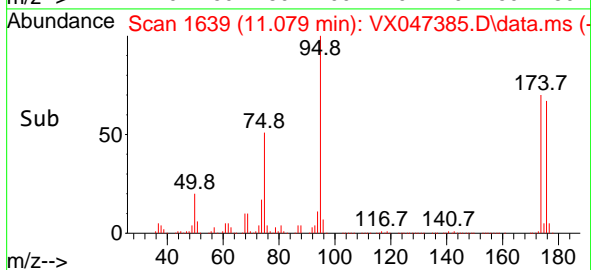
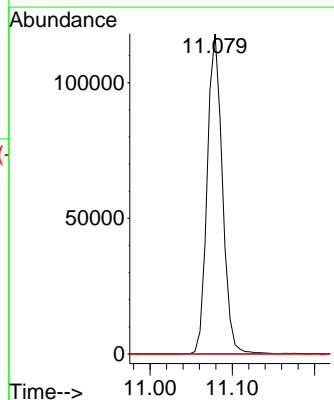
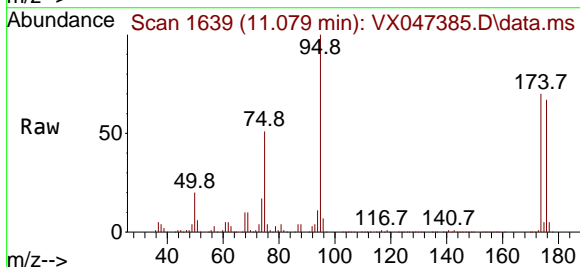
Instrument : MSVOA_X
 ClientSampleId : TW-88H-S

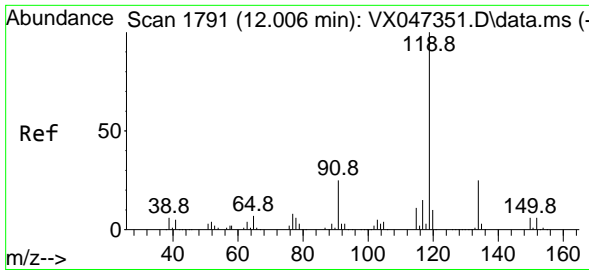
Tgt Ion: 75 Resp: 151021
 Ion Ratio Lower Upper
 75 100
 77 1.2 19.4 58.2#



#81
 trans-1,4-Dichloro-2-butene
 Concen: 111.174 ug/l
 RT: 11.079 min Scan# 1639
 Delta R.T. 0.061 min
 Lab File: VX047385.D
 Acq: 18 Aug 2025 16:18

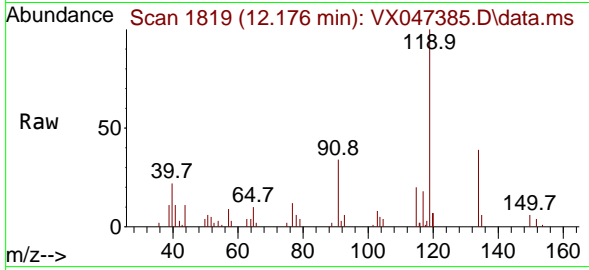
Tgt Ion: 75 Resp: 151021
 Ion Ratio Lower Upper
 75 100
 53 0.0 85.2 127.8#
 89 0.0 36.7 55.1#





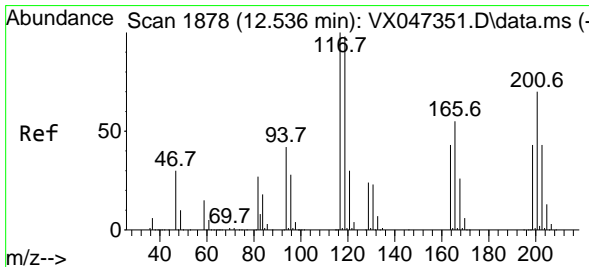
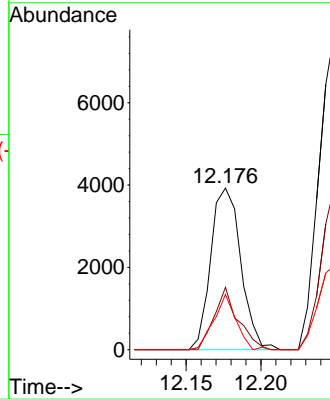
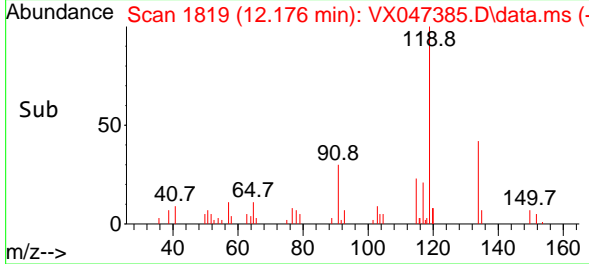
#86
 p-Isopropyltoluene
 Concen: 0.279 ug/l
 RT: 12.176 min Scan# 1819
 Delta R.T. 0.170 min
 Lab File: VX047385.D
 Acq: 18 Aug 2025 16:18

Instrument : MSVOA_X
 ClientSampleId : TW-88H-S

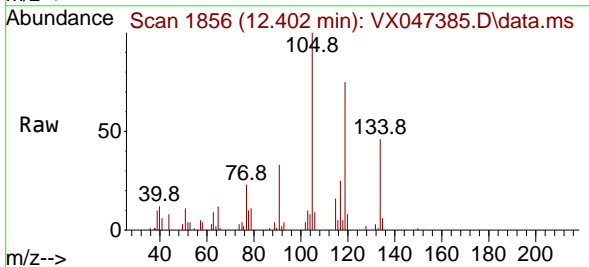


Tgt Ion:119 Resp: 5486

Ion	Ratio	Lower	Upper
119	100		
134	30.8	12.8	38.4
91	25.2	12.4	37.4



#90
 Hexachloroethane
 Concen: 0.749 ug/l
 RT: 12.402 min Scan# 1856
 Delta R.T. -0.134 min
 Lab File: VX047385.D
 Acq: 18 Aug 2025 16:18



Tgt Ion:117 Resp: 2583

Ion	Ratio	Lower	Upper
117	100		
201	0.0	35.1	105.3#

