

Data Path : Z:\voasrv\HPCHEM1\MSVOA\_X\Data\VX081825\  
 Data File : VX047386.D  
 Acq On : 18 Aug 2025 16:40  
 Operator : JC/MD  
 Sample : Q2815-11  
 Misc : 5.0mL/MSVOA\_X/WATER  
 ALS Vial : 17 Sample Multiplier: 1

Instrument :  
 MSVOA\_X  
 ClientSampleId :  
 TW-22M-W

Quant Time: Aug 19 01:45:42 2025  
 Quant Method : Z:\voasrv\HPCHEM1\MSVOA\_X\Method\82X081525W.M  
 Quant Title : SW846 8260  
 QLast Update : Mon Aug 18 04:18:28 2025  
 Response via : Initial Calibration

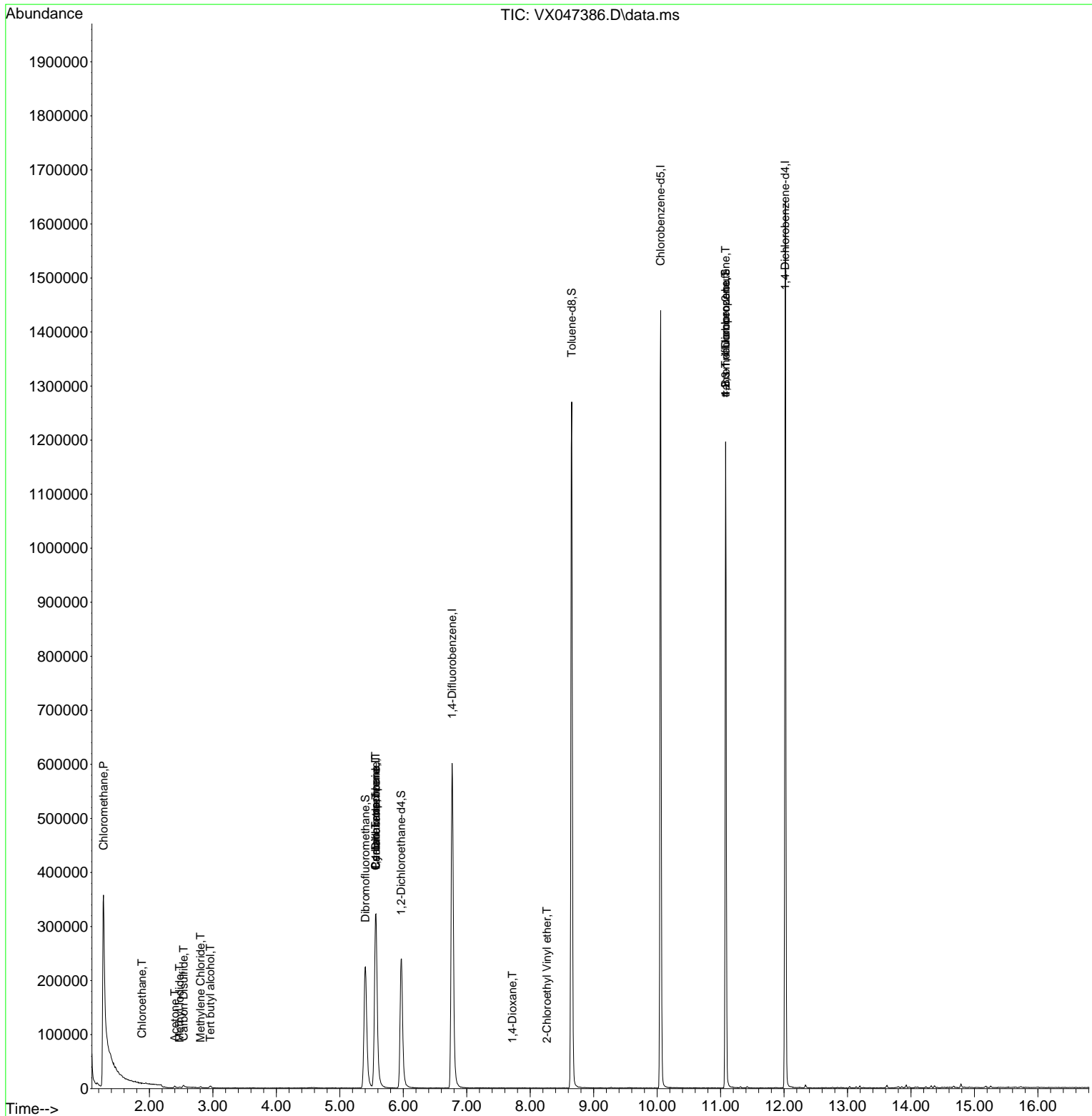
Compound	R.T.	QIon	Response	Conc	Units	Dev(Min)
-----						
Internal Standards						
1) Pentafluorobenzene	5.568	168	327533	50.000	ug/l	0.00
34) 1,4-Difluorobenzene	6.769	114	642714	50.000	ug/l	0.00
63) Chlorobenzene-d5	10.055	117	631354	50.000	ug/l	0.00
72) 1,4-Dichlorobenzene-d4	12.018	152	322324	50.000	ug/l	0.00
System Monitoring Compounds						
33) 1,2-Dichloroethane-d4	5.964	65	254964	55.621	ug/l	0.00
Spiked Amount	50.000	Range 78 - 117	Recovery	=	111.240%	
35) Dibromofluoromethane	5.404	113	213024	51.069	ug/l	0.00
Spiked Amount	50.000	Range 75 - 124	Recovery	=	102.140%	
50) Toluene-d8	8.653	98	771421	51.741	ug/l	0.00
Spiked Amount	50.000	Range 92 - 112	Recovery	=	103.480%	
62) 4-Bromofluorobenzene	11.079	95	315633	57.369	ug/l	0.00
Spiked Amount	50.000	Range 83 - 123	Recovery	=	114.740%	
Target Compounds						
						Qvalue
3) Chloromethane	1.276	50	16860	4.489	ug/l #	41
6) Chloroethane	1.880	64	1834	0.636	ug/l #	44
10) Methyl Iodide	2.477	142	1751	0.253	ug/l #	83
11) Tert butyl alcohol	2.959	59	1244	3.120	ug/l #	80
16) Acetone	2.398	43	4513	2.619	ug/l #	85
17) Carbon Disulfide	2.538	76	6037	0.485	ug/l #	89
20) Methylene Chloride	2.806	84	981	0.215	ug/l #	79
31) Cyclohexane	5.568	56	7103	0.963	ug/l #	12
36) 1,1-Dichloropropene	5.562	75	27018	4.103	ug/l #	47
38) Carbon Tetrachloride	5.562	117	34510	4.796	ug/l #	16
49) 1,4-Dioxane	7.720	88	19	0.383	ug/l #	1
58) 2-Chloroethyl Vinyl ether	8.263	63	26	8.363	ug/l #	46
76) 1,2,3-Trichloropropane	11.079	75	162065	27.414	ug/l #	39
81) trans-1,4-Dichloro-2-b...	11.079	75	162065	108.284	ug/l #	7
-----						

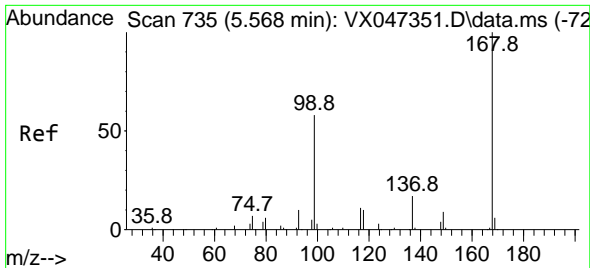
(#) = qualifier out of range (m) = manual integration (+) = signals summed

Data Path : Z:\voasrv\HPCHEM1\MSVOA\_X\Data\VX081825\  
 Data File : VX047386.D  
 Acq On : 18 Aug 2025 16:40  
 Operator : JC/MD  
 Sample : Q2815-11  
 Misc : 5.0mL/MSVOA\_X/WATER  
 ALS Vial : 17 Sample Multiplier: 1

Instrument :  
 MSVOA\_X  
 ClientSampleId :  
 TW-22M-W

Quant Time: Aug 19 01:45:42 2025  
 Quant Method : Z:\voasrv\HPCHEM1\MSVOA\_X\Method\82X081525W.M  
 Quant Title : SW846 8260  
 QLast Update : Mon Aug 18 04:18:28 2025  
 Response via : Initial Calibration

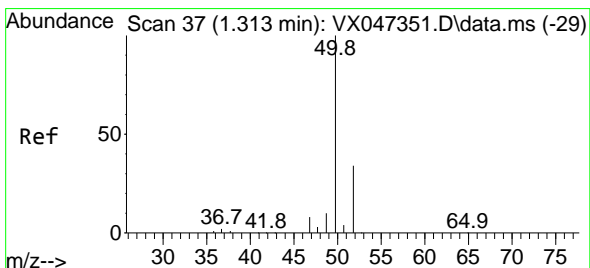
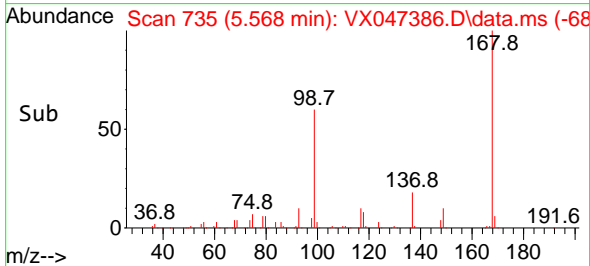
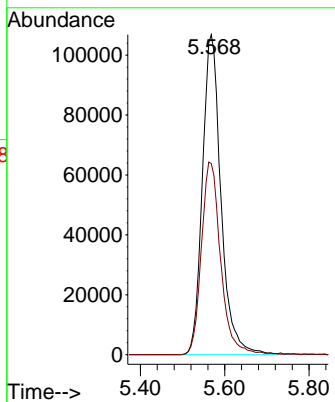
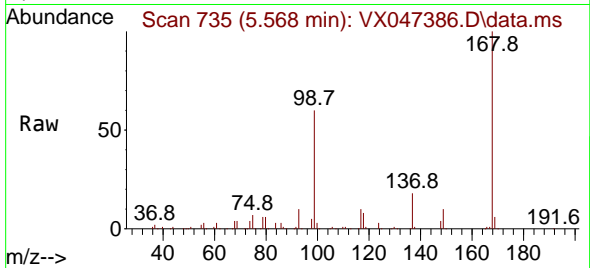




#1  
 Pentafluorobenzene  
 Concen: 50.000 ug/l  
 RT: 5.568 min Scan# 71  
 Delta R.T. 0.000 min  
 Lab File: VX047386.D  
 Acq: 18 Aug 2025 16:40

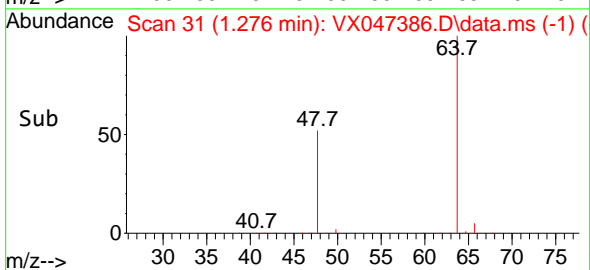
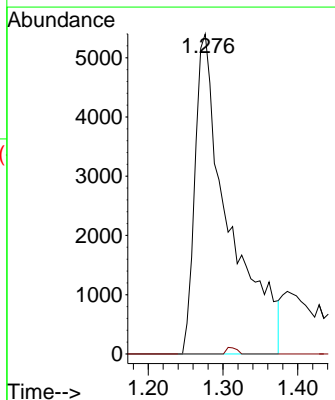
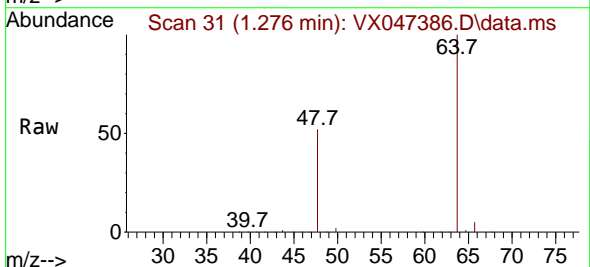
Instrument :  
 MSVOA\_X  
 ClientSampleId :  
 TW-22M-W

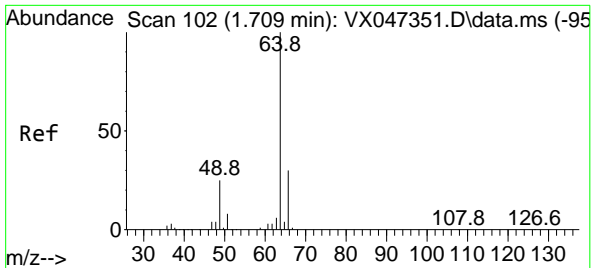
Tgt Ion:168 Resp: 327533  
 Ion Ratio Lower Upper  
 168 100  
 99 59.7 47.9 71.9



#3  
 Chloromethane  
 Concen: 4.489 ug/l  
 RT: 1.276 min Scan# 31  
 Delta R.T. -0.036 min  
 Lab File: VX047386.D  
 Acq: 18 Aug 2025 16:40

Tgt Ion: 50 Resp: 16860  
 Ion Ratio Lower Upper  
 50 100  
 52 0.0 27.0 40.4

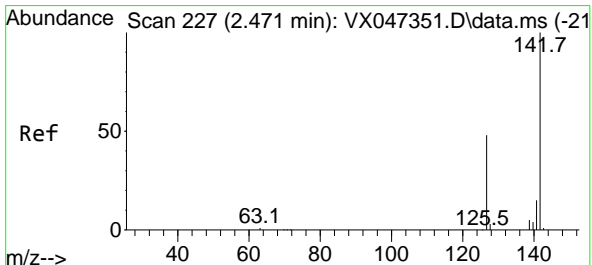
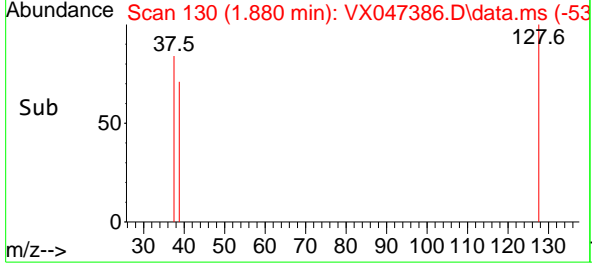
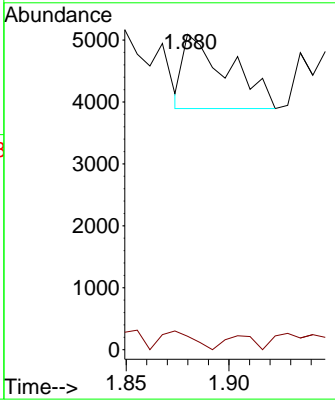
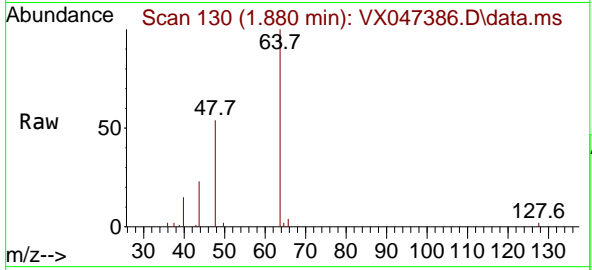




#6  
 Chloroethane  
 Concen: 0.636 ug/l  
 RT: 1.880 min Scan# 11  
 Delta R.T. 0.171 min  
 Lab File: VX047386.D  
 Acq: 18 Aug 2025 16:40

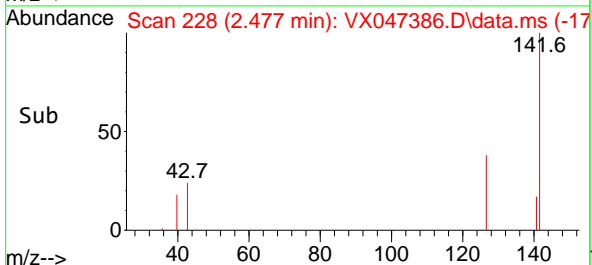
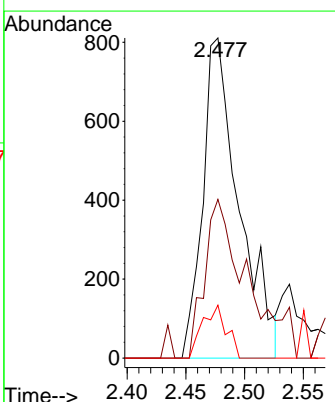
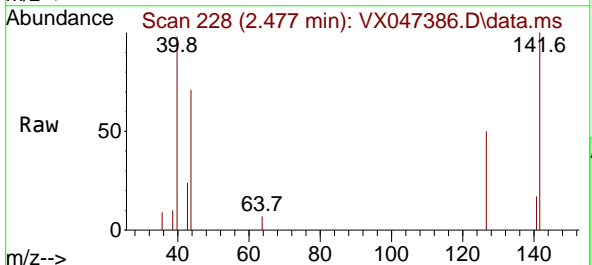
Instrument : MSVOA\_X  
 ClientSampleId : TW-22M-W

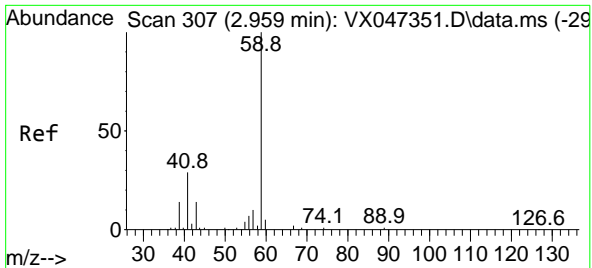
Tgt Ion: 64 Resp: 1834  
 Ion Ratio Lower Upper  
 64 100  
 66 0.0 24.4 36.6#



#10  
 Methyl Iodide  
 Concen: 0.253 ug/l  
 RT: 2.477 min Scan# 228  
 Delta R.T. 0.006 min  
 Lab File: VX047386.D  
 Acq: 18 Aug 2025 16:40

Tgt Ion:142 Resp: 1751  
 Ion Ratio Lower Upper  
 142 100  
 127 58.2 36.1 54.1#  
 141 10.9 11.1 16.7#

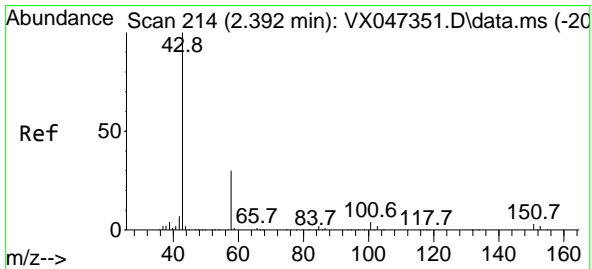
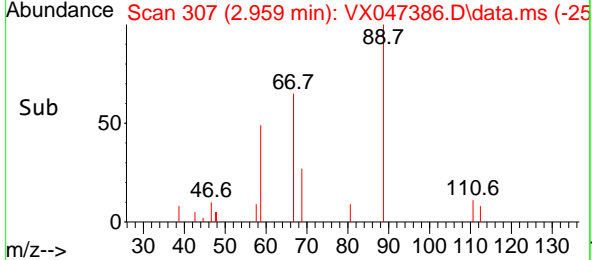
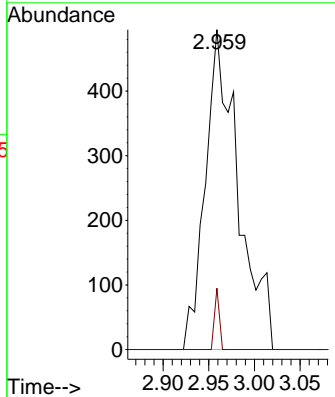
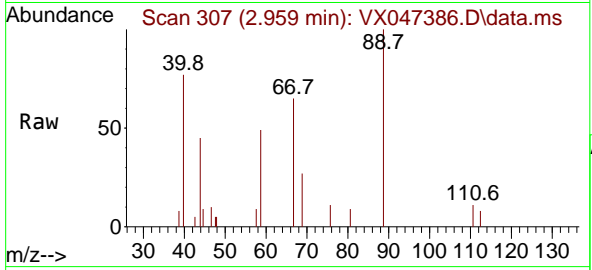




#11  
 Tert butyl alcohol  
 Concen: 3.120 ug/l  
 RT: 2.959 min Scan# 30  
 Delta R.T. 0.000 min  
 Lab File: VX047386.D  
 Acq: 18 Aug 2025 16:40

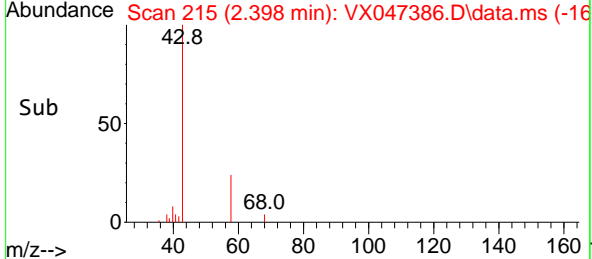
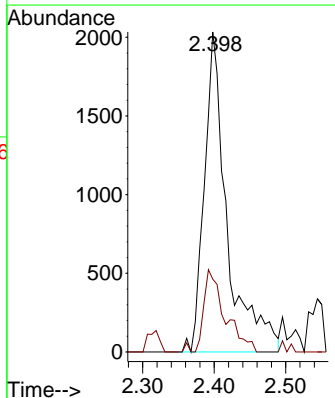
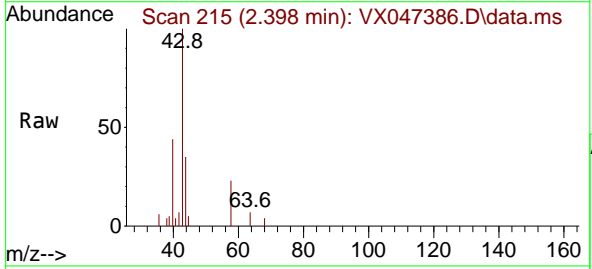
Instrument : MSVOA\_X  
 ClientSampleId : TW-22M-W

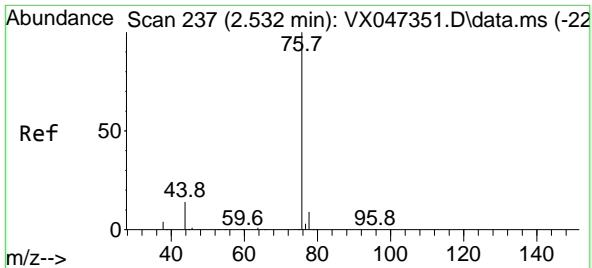
Tgt Ion: 59 Resp: 1244  
 Ion Ratio Lower Upper  
 59 100  
 57 2.8 8.3 12.5#



#16  
 Acetone  
 Concen: 2.619 ug/l  
 RT: 2.398 min Scan# 215  
 Delta R.T. 0.006 min  
 Lab File: VX047386.D  
 Acq: 18 Aug 2025 16:40

Tgt Ion: 43 Resp: 4513  
 Ion Ratio Lower Upper  
 43 100  
 58 22.8 24.8 37.2#

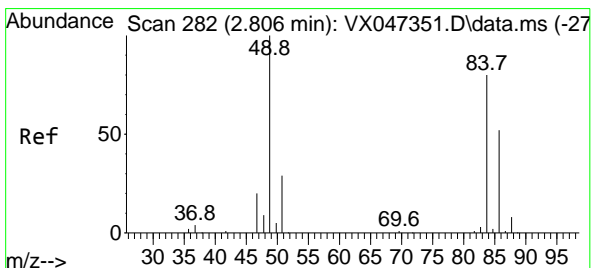
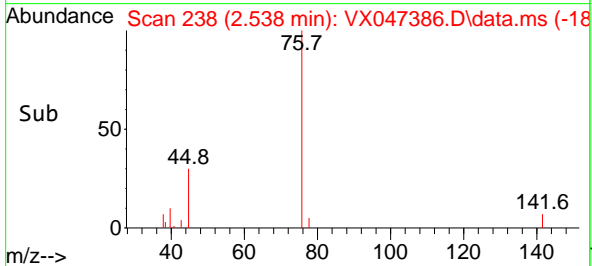
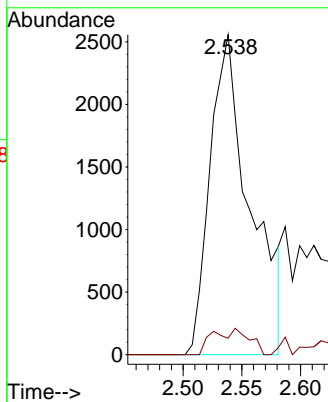
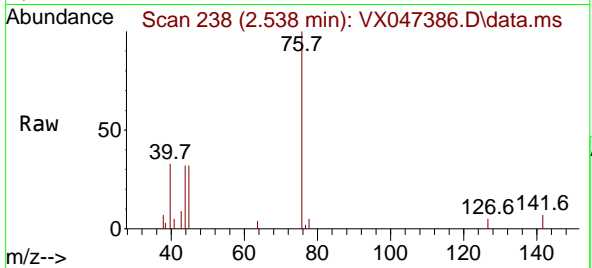




#17  
 Carbon Disulfide  
 Concen: 0.485 ug/l  
 RT: 2.538 min Scan# 211  
 Delta R.T. 0.006 min  
 Lab File: VX047386.D  
 Acq: 18 Aug 2025 16:40

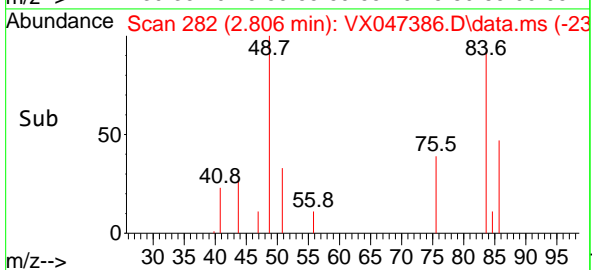
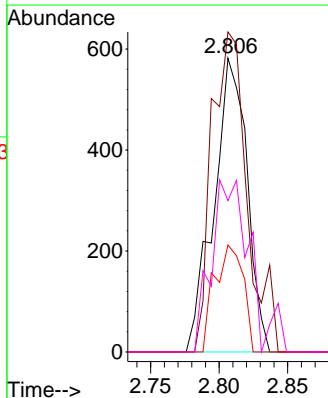
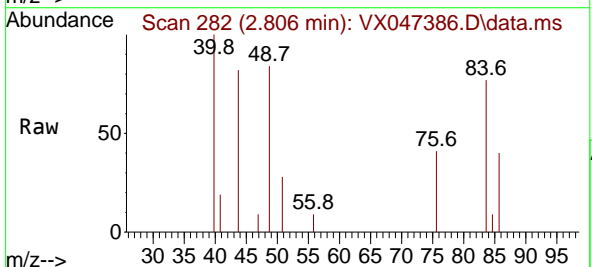
Instrument : MSVOA\_X  
 ClientSampleId : TW-22M-W

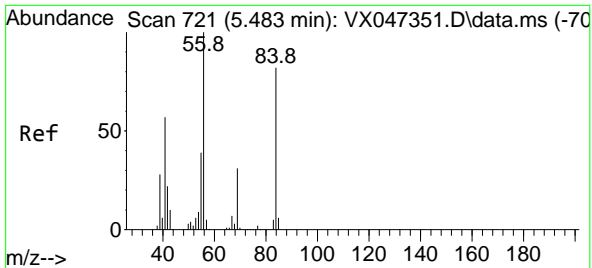
Tgt Ion: 76 Resp: 6037  
 Ion Ratio Lower Upper  
 76 100  
 78 5.2 7.2 10.8#



#20  
 Methylene Chloride  
 Concen: 0.215 ug/l  
 RT: 2.806 min Scan# 282  
 Delta R.T. 0.000 min  
 Lab File: VX047386.D  
 Acq: 18 Aug 2025 16:40

Tgt Ion: 84 Resp: 981  
 Ion Ratio Lower Upper  
 84 100  
 49 97.5 100.1 150.1#  
 51 32.6 29.5 44.3  
 86 46.2 51.8 77.8#

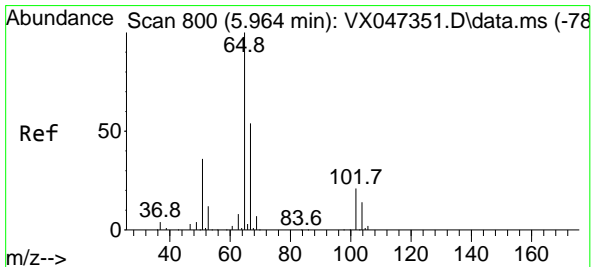
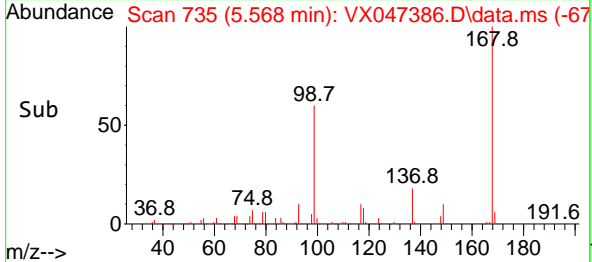
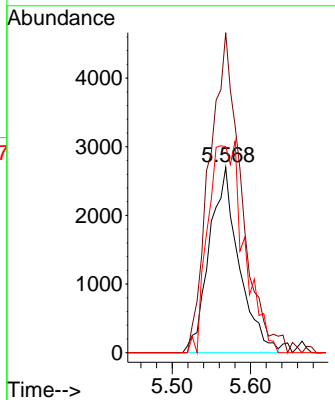
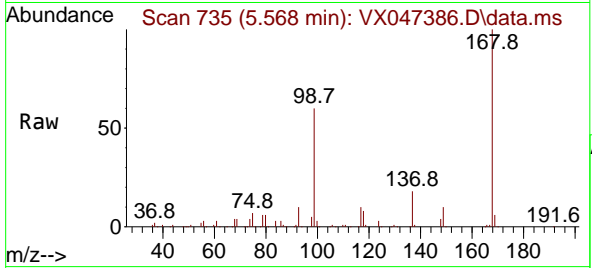




#31  
 Cyclohexane  
 Concen: 0.963 ug/l  
 RT: 5.568 min Scan# 710  
 Delta R.T. 0.086 min  
 Lab File: VX047386.D  
 Acq: 18 Aug 2025 16:40

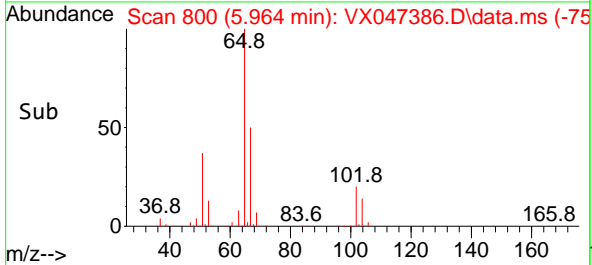
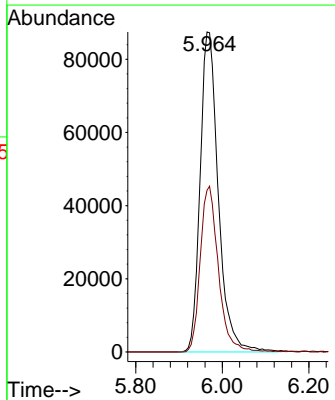
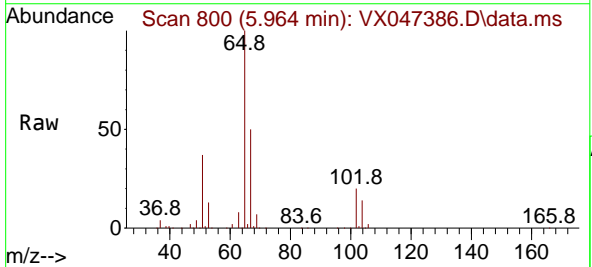
Instrument :  
 MSVOA\_X  
 ClientSampleId :  
 TW-22M-W

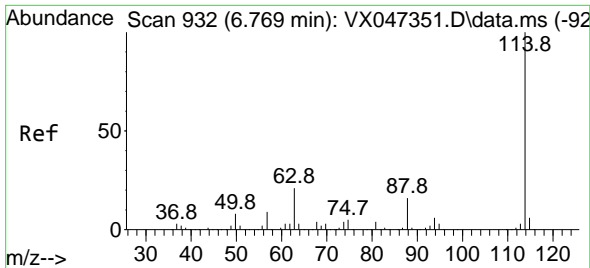
Tgt Ion	Resp	Lower	Upper
56	7103		
56	100		
69	166.2	24.3	36.5#
84	107.0	65.3	97.9#



#33  
 1,2-Dichloroethane-d4  
 Concen: 55.621 ug/l  
 RT: 5.964 min Scan# 800  
 Delta R.T. 0.000 min  
 Lab File: VX047386.D  
 Acq: 18 Aug 2025 16:40

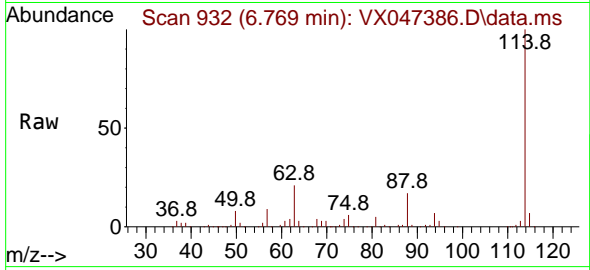
Tgt Ion	Resp	Lower	Upper
65	254964		
65	100		
67	51.8	0.0	106.0



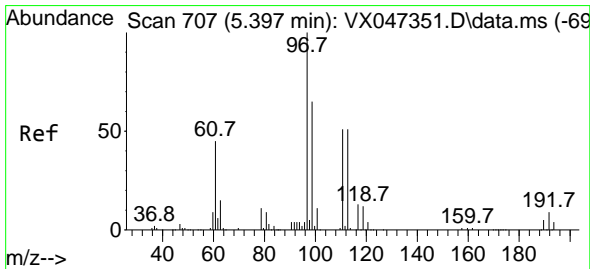
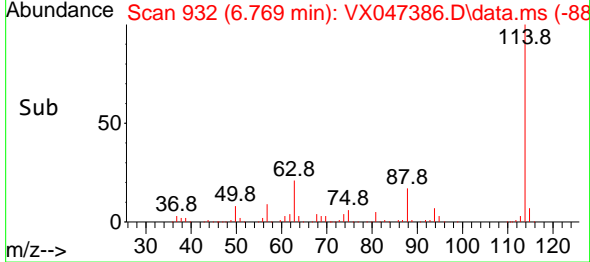
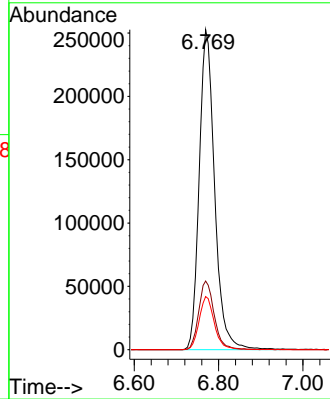


#34  
 1,4-Difluorobenzene  
 Concen: 50.000 ug/l  
 RT: 6.769 min Scan# 91  
 Delta R.T. 0.000 min  
 Lab File: VX047386.D  
 Acq: 18 Aug 2025 16:40

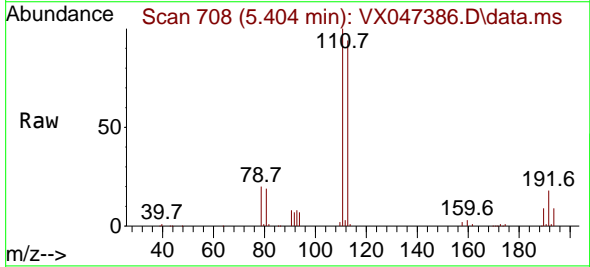
Instrument :  
 MSVOA\_X  
 ClientSampleId :  
 TW-22M-W



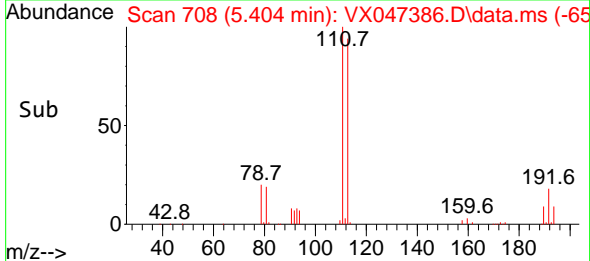
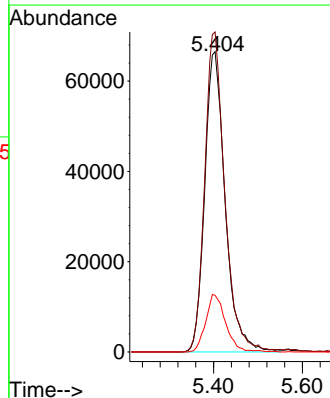
Tgt Ion:114 Resp: 642714  
 Ion Ratio Lower Upper  
 114 100  
 63 21.5 0.0 42.4  
 88 16.6 0.0 33.0



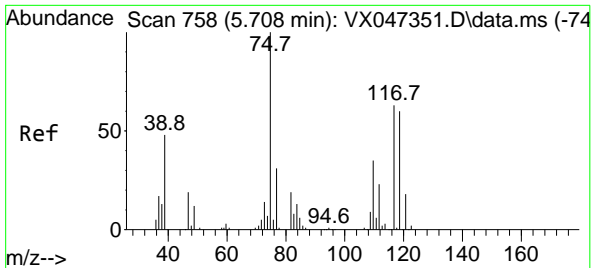
#35  
 Dibromofluoromethane  
 Concen: 51.069 ug/l  
 RT: 5.404 min Scan# 708  
 Delta R.T. 0.006 min  
 Lab File: VX047386.D  
 Acq: 18 Aug 2025 16:40



Tgt Ion:113 Resp: 213024  
 Ion Ratio Lower Upper  
 113 100  
 111 104.8 81.4 122.2  
 192 18.6 14.1 21.1



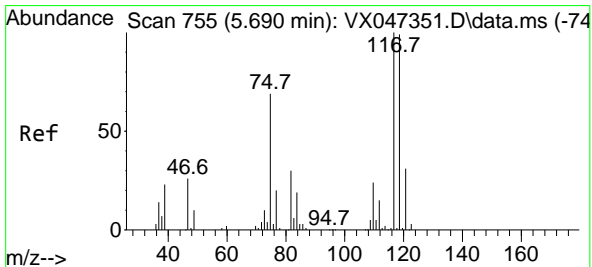
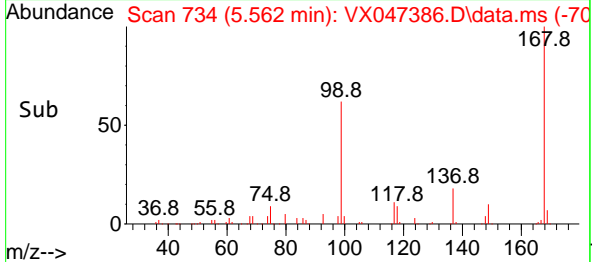
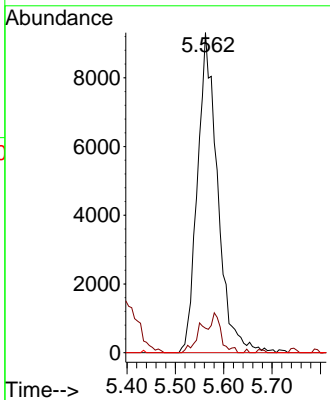
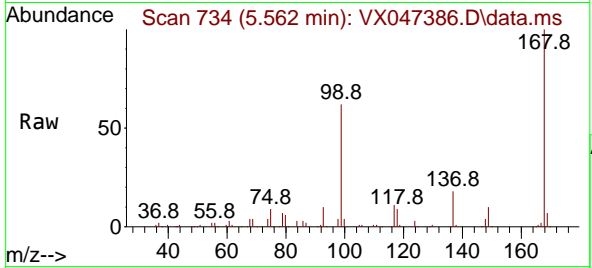




#36  
 1,1-Dichloropropene  
 Concen: 4.103 ug/l  
 RT: 5.562 min Scan# 734  
 Delta R.T. -0.146 min  
 Lab File: VX047386.D  
 Acq: 18 Aug 2025 16:40

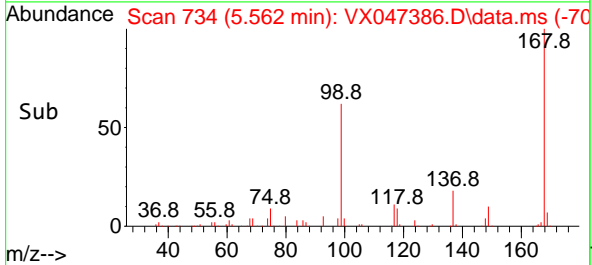
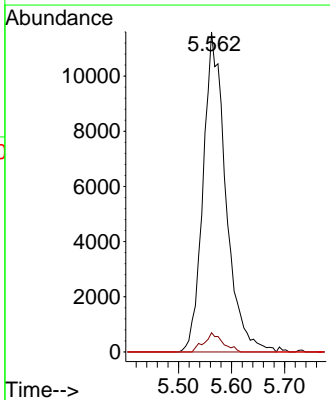
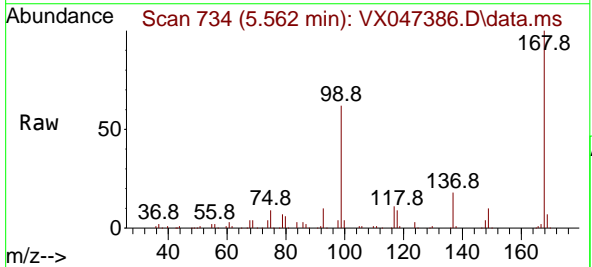
Instrument : MSVOA\_X  
 ClientSampleId : TW-22M-W

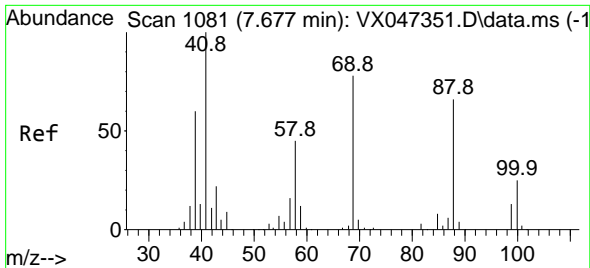
Tgt Ion	Resp	Lower	Upper
75	27018		
75	100		
110	5.5	17.4	52.2#
77	0.0	24.4	36.6#



#38  
 Carbon Tetrachloride  
 Concen: 4.796 ug/l  
 RT: 5.562 min Scan# 734  
 Delta R.T. -0.128 min  
 Lab File: VX047386.D  
 Acq: 18 Aug 2025 16:40

Tgt Ion	Resp	Lower	Upper
117	34510		
117	100		
119	6.0	78.5	117.7#
121	0.0	24.7	37.1#



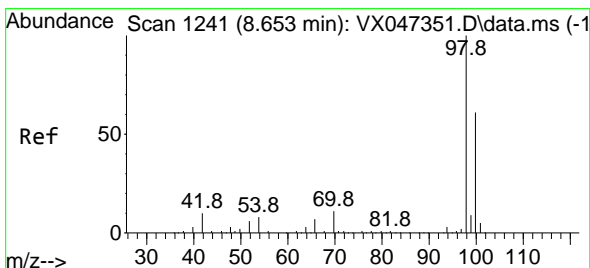
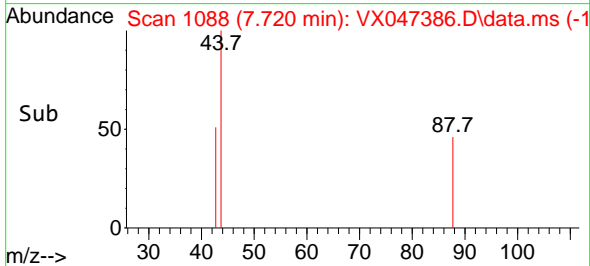
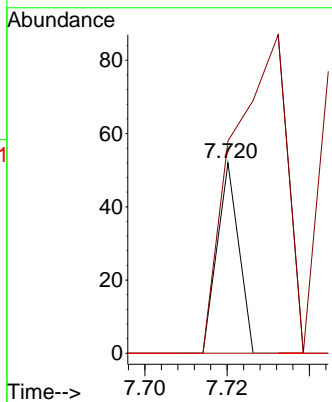
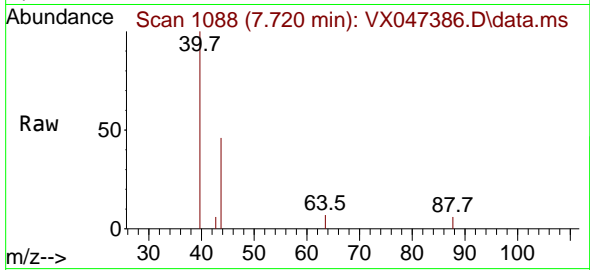


#49  
 1,4-Dioxane  
 Concen: 0.383 ug/l  
 RT: 7.720 min Scan# 1088  
 Delta R.T. 0.043 min  
 Lab File: VX047386.D  
 Acq: 18 Aug 2025 16:40

Instrument : MSVOA\_X  
 ClientSampleId : TW-22M-W

Tgt Ion: 88 Resp: 19

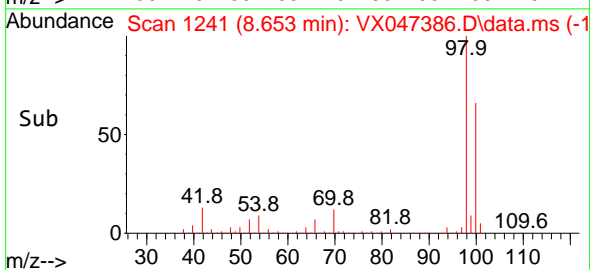
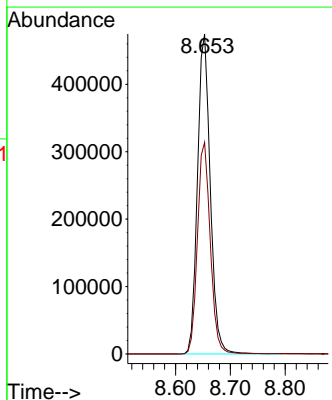
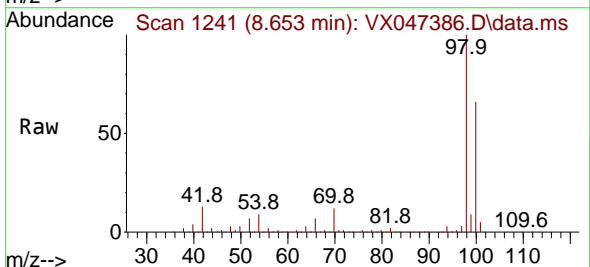
Ion	Ratio	Lower	Upper
88	100		
43	563.2	32.4	48.6#
58	0.0	56.9	85.3#

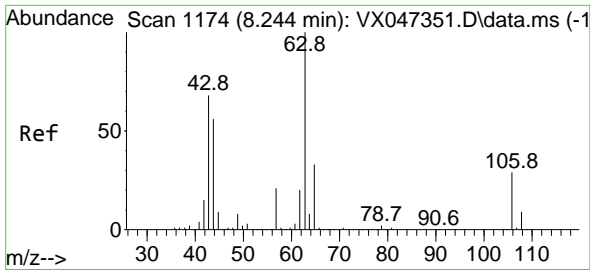


#50  
 Toluene-d8  
 Concen: 51.741 ug/l  
 RT: 8.653 min Scan# 1241  
 Delta R.T. 0.000 min  
 Lab File: VX047386.D  
 Acq: 18 Aug 2025 16:40

Tgt Ion: 98 Resp: 771421

Ion	Ratio	Lower	Upper
98	100		
100	66.3	53.9	80.9

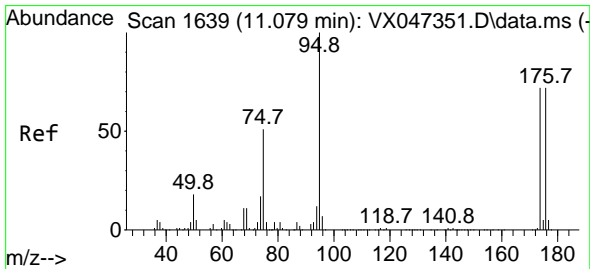
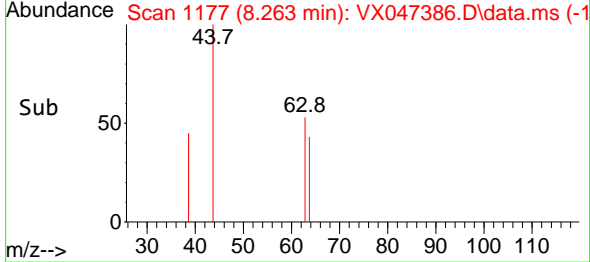
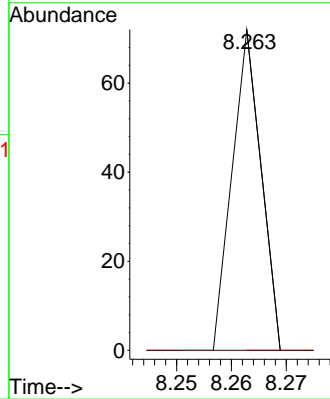
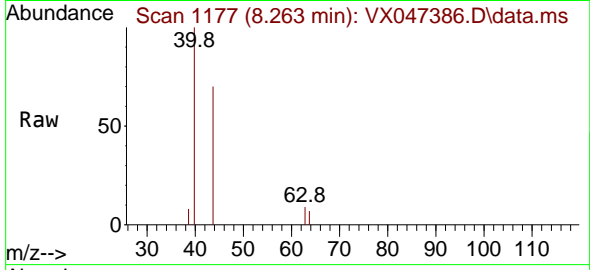




#58  
 2-Chloroethyl Vinyl ether  
 Concen: 8.363 ug/l  
 RT: 8.263 min Scan# 1177  
 Delta R.T. 0.019 min  
 Lab File: VX047386.D  
 Acq: 18 Aug 2025 16:40

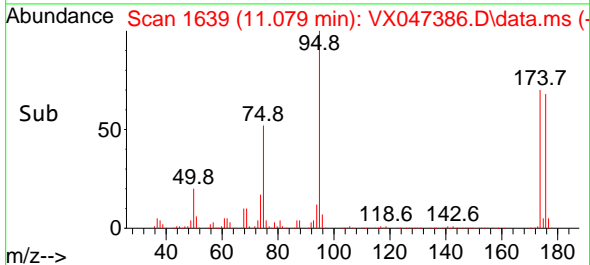
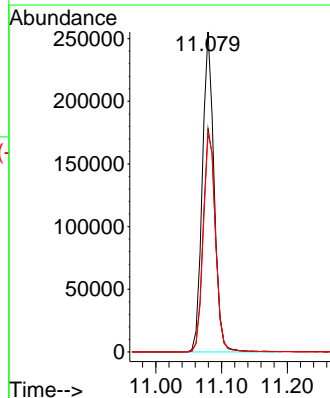
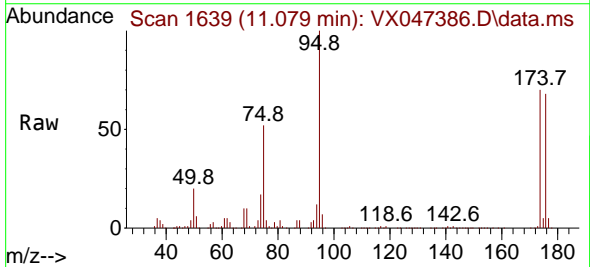
Instrument : MSVOA\_X  
 ClientSampleId : TW-22M-W

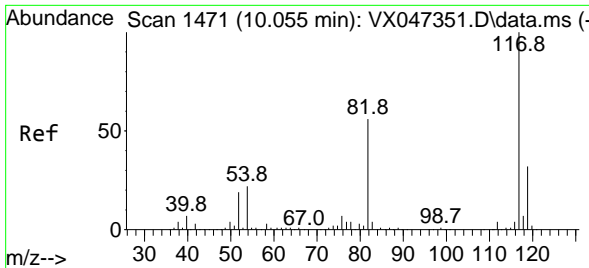
Tgt Ion: 63 Resp: 26  
 Ion Ratio Lower Upper  
 63 100  
 106 0.0 22.8 34.2#



#62  
 4-Bromofluorobenzene  
 Concen: 57.369 ug/l  
 RT: 11.079 min Scan# 1639  
 Delta R.T. 0.000 min  
 Lab File: VX047386.D  
 Acq: 18 Aug 2025 16:40

Tgt Ion: 95 Resp: 315633  
 Ion Ratio Lower Upper  
 95 100  
 174 72.8 0.0 148.0  
 176 71.5 0.0 145.4



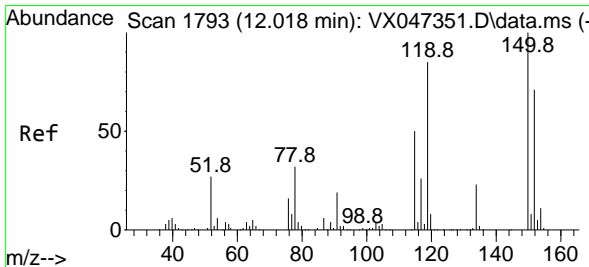
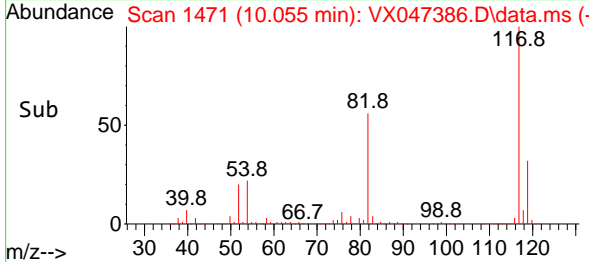
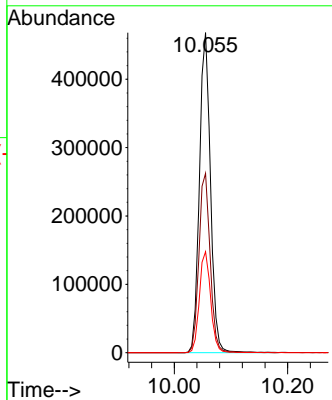
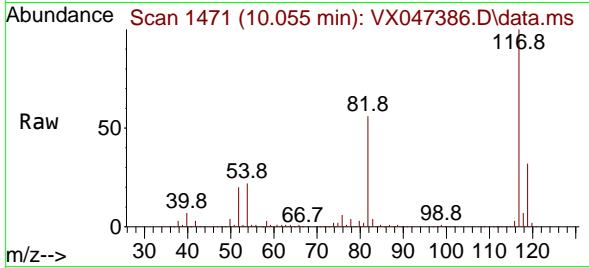


#63  
 Chlorobenzene-d5  
 Concen: 50.000 ug/l  
 RT: 10.055 min Scan# 14  
 Delta R.T. 0.000 min  
 Lab File: VX047386.D  
 Acq: 18 Aug 2025 16:40

Instrument :  
 MSVOA\_X  
 ClientSampleId :  
 TW-22M-W

Tgt Ion:117 Resp: 631354

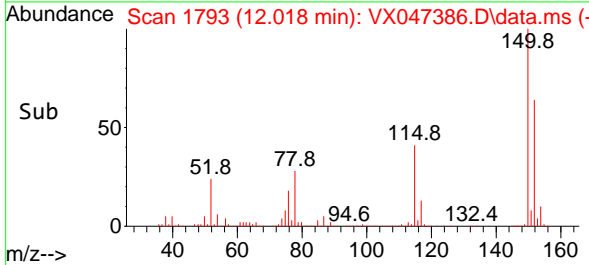
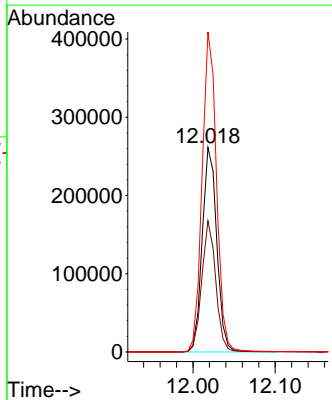
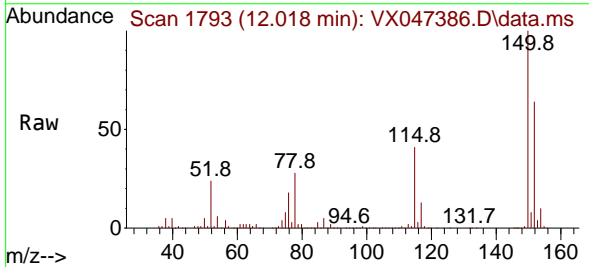
Ion	Ratio	Lower	Upper
117	100		
82	56.1	45.0	67.4
119	31.5	25.8	38.8

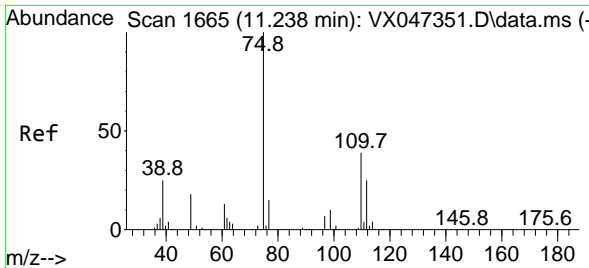


#72  
 1,4-Dichlorobenzene-d4  
 Concen: 50.000 ug/l  
 RT: 12.018 min Scan# 1793  
 Delta R.T. 0.000 min  
 Lab File: VX047386.D  
 Acq: 18 Aug 2025 16:40

Tgt Ion:152 Resp: 322324

Ion	Ratio	Lower	Upper
152	100		
115	61.6	44.6	133.8
150	154.6	0.0	349.8

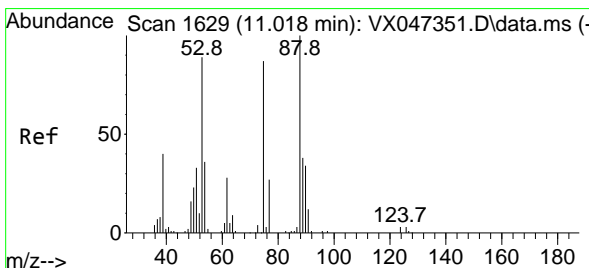
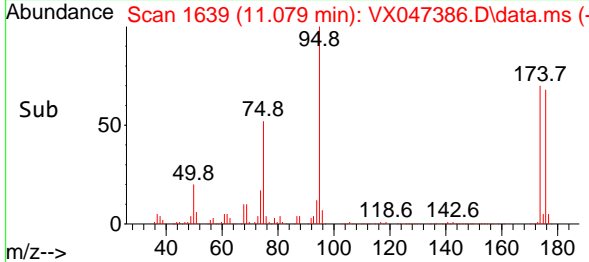
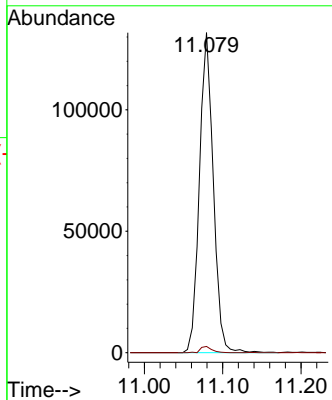
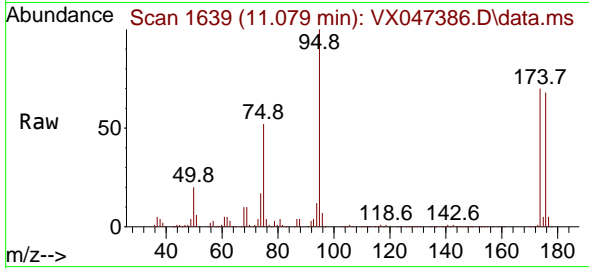




#76  
 1,2,3-Trichloropropane  
 Concen: 27.414 ug/l  
 RT: 11.079 min Scan# 1639  
 Delta R.T. -0.158 min  
 Lab File: VX047386.D  
 Acq: 18 Aug 2025 16:40

Instrument : MSVOA\_X  
 ClientSampleId : TW-22M-W

Tgt Ion: 75 Resp: 162065  
 Ion Ratio Lower Upper  
 75 100  
 77 1.6 19.4 58.2#



#81  
 trans-1,4-Dichloro-2-butene  
 Concen: 108.284 ug/l  
 RT: 11.079 min Scan# 1639  
 Delta R.T. 0.061 min  
 Lab File: VX047386.D  
 Acq: 18 Aug 2025 16:40

Tgt Ion: 75 Resp: 162065  
 Ion Ratio Lower Upper  
 75 100  
 53 0.0 85.2 127.8#  
 89 0.0 36.7 55.1#

