

Data Path : Z:\voasrv\HPCHEM1\MSVOA_X\Data\VX081825\
 Data File : VX047389.D
 Acq On : 18 Aug 2025 17:44
 Operator : JC/MD
 Sample : Q2815-14
 Misc : 5.0mL/MSVOA_X/WATER
 ALS Vial : 20 Sample Multiplier: 1

Instrument :
 MSVOA_X
 ClientSampleId :
 TW-22M-N

Quant Time: Aug 19 01:47:01 2025
 Quant Method : Z:\voasrv\HPCHEM1\MSVOA_X\Method\82X081525W.M
 Quant Title : SW846 8260
 QLast Update : Mon Aug 18 04:18:28 2025
 Response via : Initial Calibration

Compound	R.T.	QIon	Response	Conc	Units	Dev(Min)

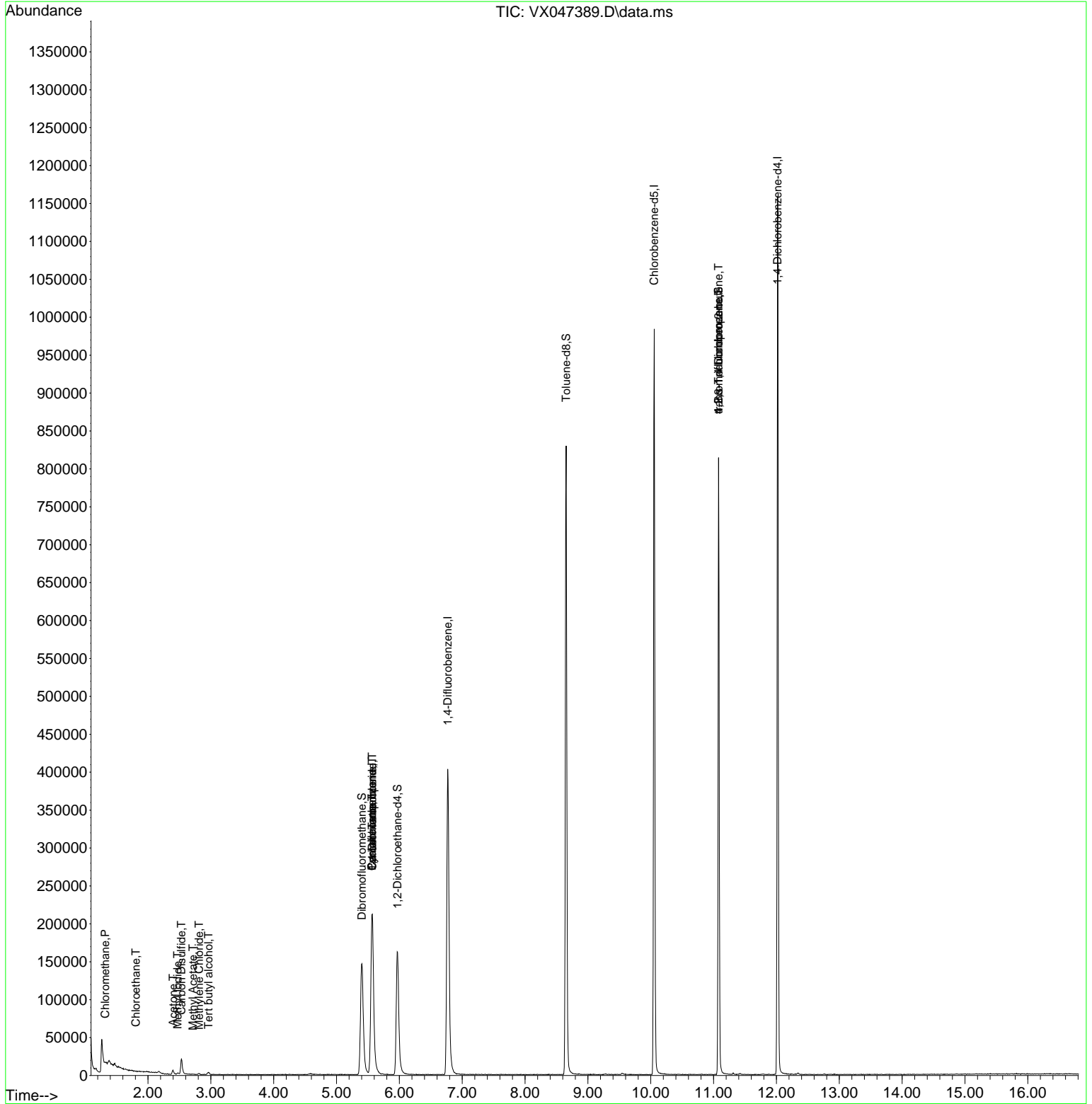
Internal Standards						
1) Pentafluorobenzene	5.562	168	216971	50.000	ug/l	0.00
34) 1,4-Difluorobenzene	6.769	114	436090	50.000	ug/l	0.00
63) Chlorobenzene-d5	10.055	117	439636	50.000	ug/l	0.00
72) 1,4-Dichlorobenzene-d4	12.018	152	227147	50.000	ug/l	0.00
System Monitoring Compounds						
33) 1,2-Dichloroethane-d4	5.971	65	173632	57.180	ug/l	0.00
Spiked Amount	50.000	Range 78 - 117	Recovery	=	114.360%	
35) Dibromofluoromethane	5.404	113	139762	49.381	ug/l	0.00
Spiked Amount	50.000	Range 75 - 124	Recovery	=	98.760%	
50) Toluene-d8	8.653	98	500774	49.503	ug/l	0.00
Spiked Amount	50.000	Range 92 - 112	Recovery	=	99.000%	
62) 4-Bromofluorobenzene	11.079	95	212376	56.891	ug/l	0.00
Spiked Amount	50.000	Range 83 - 123	Recovery	=	113.780%	
Target Compounds						
						Qvalue
3) Chloromethane	1.319	50	909	0.365	ug/l #	84
6) Chloroethane	1.807	64	453	0.237	ug/l #	44
10) Methyl Iodide	2.471	142	2098	0.457	ug/l #	76
11) Tert butyl alcohol	2.965	59	1258	4.762	ug/l #	72
16) Acetone	2.398	43	6991	6.125	ug/l #	87
17) Carbon Disulfide	2.532	76	27495	3.335	ug/l	100
18) Methyl Acetate	2.715	43	685	0.232	ug/l #	53
20) Methylene Chloride	2.813	84	765	0.253	ug/l #	70
31) Cyclohexane	5.562	56	4546	0.930	ug/l #	1
36) 1,1-Dichloropropene	5.568	75	17901	4.007	ug/l #	42
38) Carbon Tetrachloride	5.568	117	22931	4.697	ug/l #	15
76) 1,2,3-Trichloropropane	11.079	75	109810	26.358	ug/l #	38
81) trans-1,4-Dichloro-2-b...	11.079	75	109810	104.415	ug/l #	7

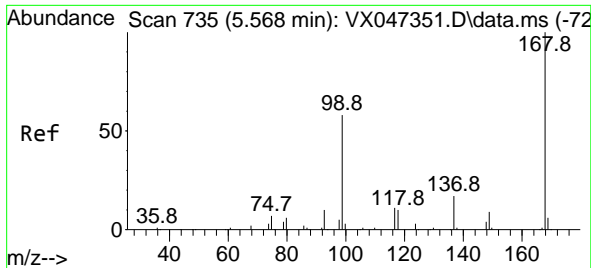
(#) = qualifier out of range (m) = manual integration (+) = signals summed

Data Path : Z:\voasrv\HPCHEM1\MSVOA_X\Data\VX081825\
Data File : VX047389.D
Acq On : 18 Aug 2025 17:44
Operator : JC/MD
Sample : Q2815-14
Misc : 5.0mL/MSVOA_X/WATER
ALS Vial : 20 Sample Multiplier: 1

Instrument :
MSVOA_X
ClientSampleId :
TW-22M-N

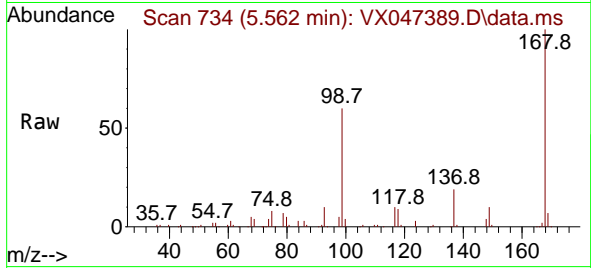
Quant Time: Aug 19 01:47:01 2025
Quant Method : Z:\voasrv\HPCHEM1\MSVOA_X\Method\82X081525W.M
Quant Title : SW846 8260
QLast Update : Mon Aug 18 04:18:28 2025
Response via : Initial Calibration



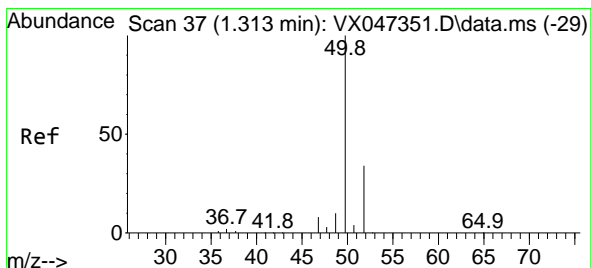
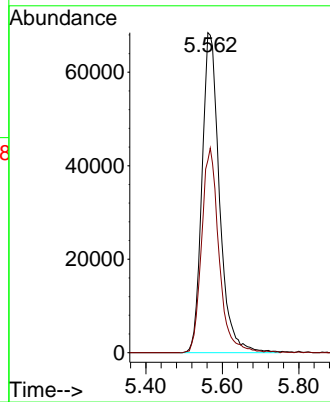
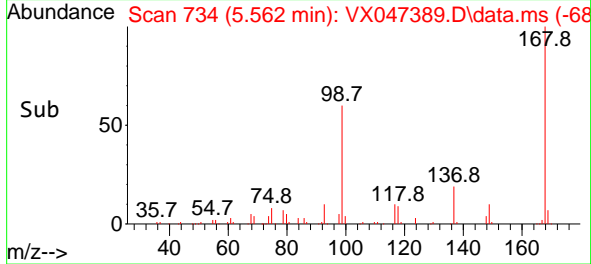


#1
 Pentafluorobenzene
 Concen: 50.000 ug/l
 RT: 5.562 min Scan# 71
 Delta R.T. -0.006 min
 Lab File: VX047389.D
 Acq: 18 Aug 2025 17:44

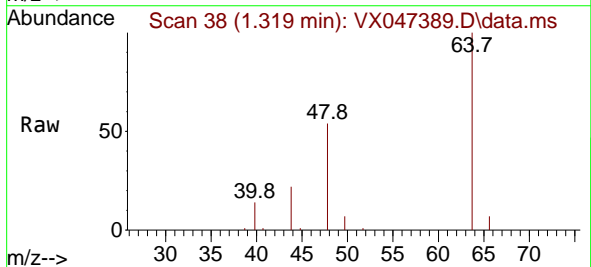
Instrument :
 MSVOA_X
 ClientSampleId :
 TW-22M-N



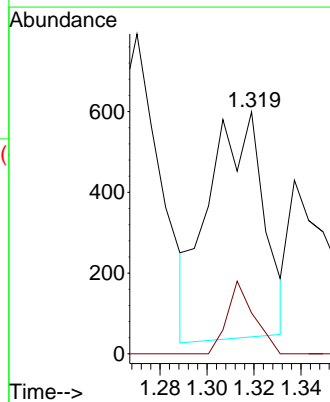
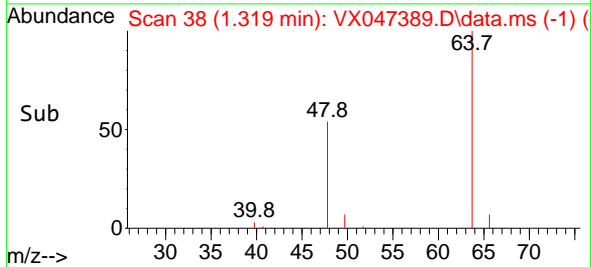
Tgt Ion:168 Resp: 216971
 Ion Ratio Lower Upper
 168 100
 99 60.1 47.9 71.9

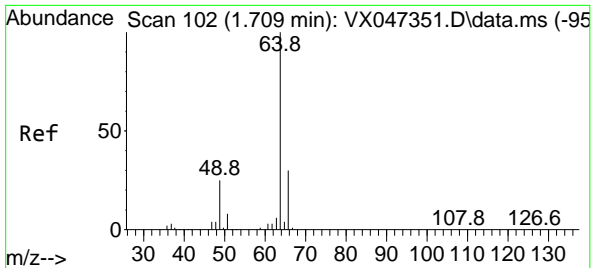


#3
 Chloromethane
 Concen: 0.365 ug/l
 RT: 1.319 min Scan# 38
 Delta R.T. 0.006 min
 Lab File: VX047389.D
 Acq: 18 Aug 2025 17:44



Tgt Ion: 50 Resp: 909
 Ion Ratio Lower Upper
 50 100
 52 24.5 27.0 40.4#

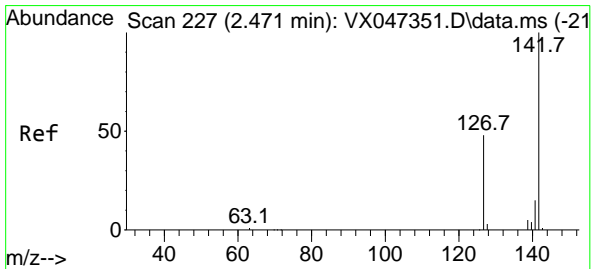
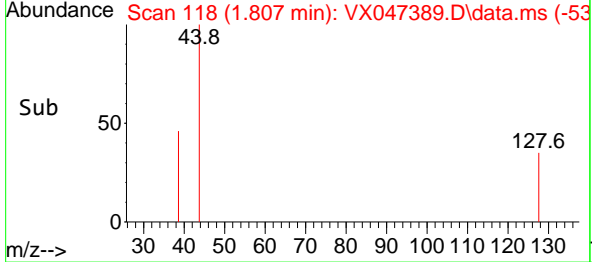
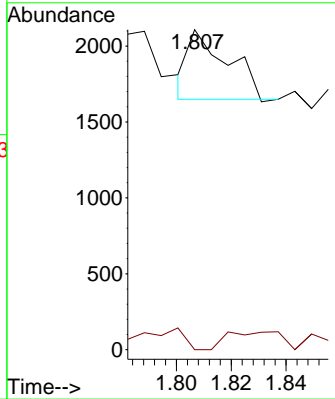
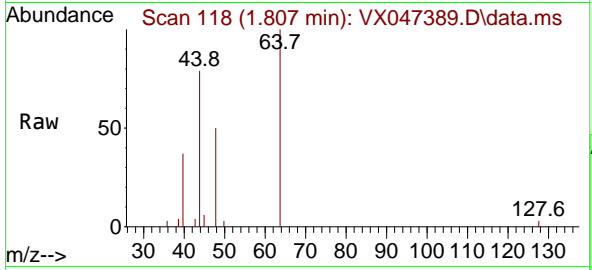




#6
 Chloroethane
 Concen: 0.237 ug/l
 RT: 1.807 min Scan# 118
 Delta R.T. 0.098 min
 Lab File: VX047389.D
 Acq: 18 Aug 2025 17:44

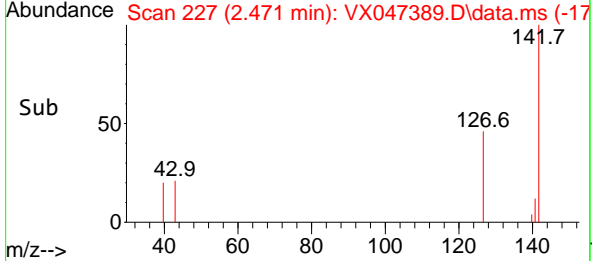
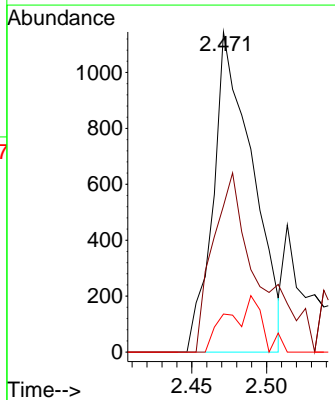
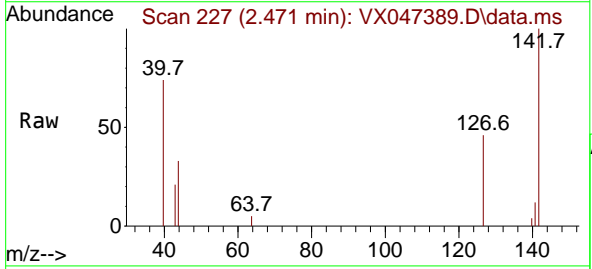
Instrument : MSVOA_X
 Client Sample Id : TW-22M-N

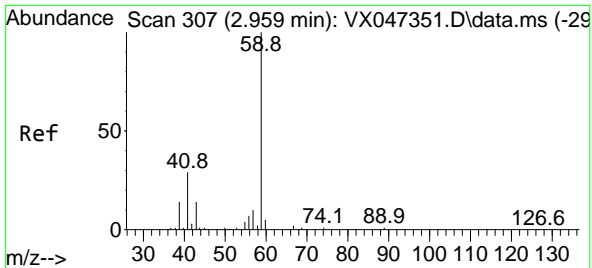
Tgt Ion: 64 Resp: 453
 Ion Ratio Lower Upper
 64 100
 66 0.0 24.4 36.6#



#10
 Methyl Iodide
 Concen: 0.457 ug/l
 RT: 2.471 min Scan# 227
 Delta R.T. 0.000 min
 Lab File: VX047389.D
 Acq: 18 Aug 2025 17:44

Tgt Ion: 142 Resp: 2098
 Ion Ratio Lower Upper
 142 100
 127 64.9 36.1 54.1#
 141 15.2 11.1 16.7

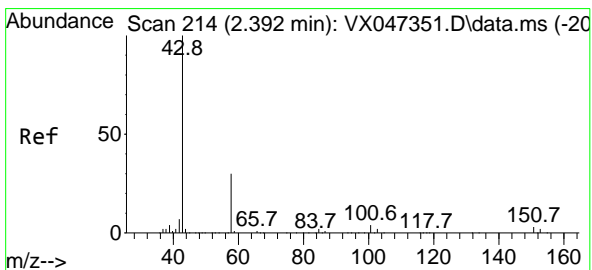
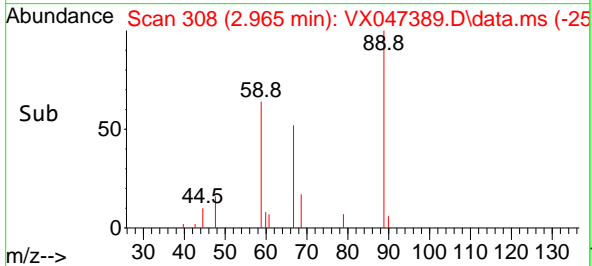
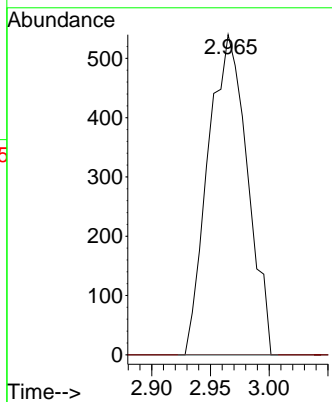
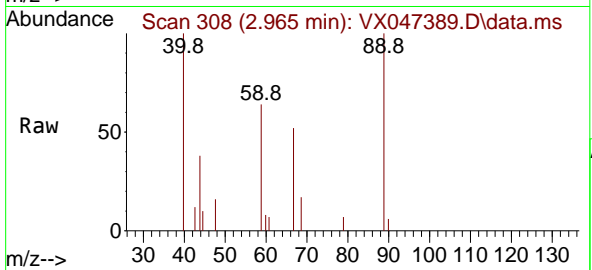




#11
 Tert butyl alcohol
 Concen: 4.762 ug/l
 RT: 2.965 min Scan# 30
 Delta R.T. 0.006 min
 Lab File: VX047389.D
 Acq: 18 Aug 2025 17:44

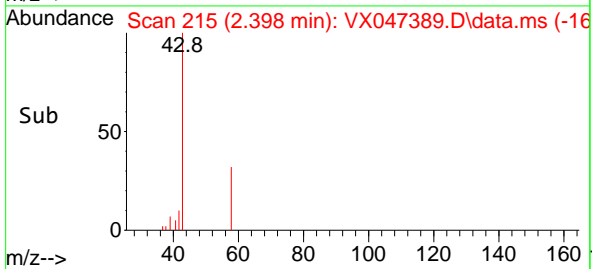
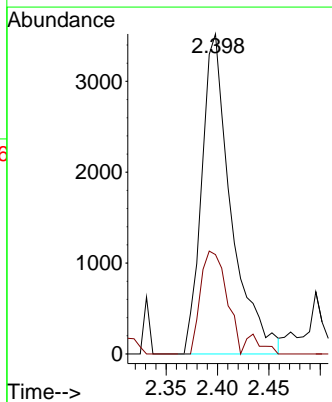
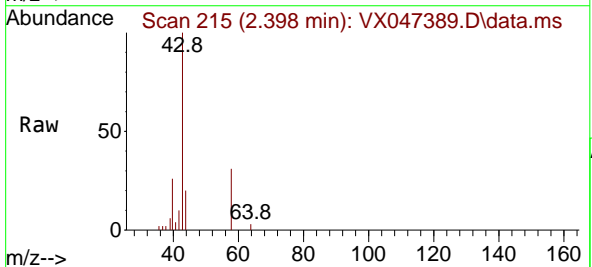
Instrument : MSVOA_X
 ClientSampleId : TW-22M-N

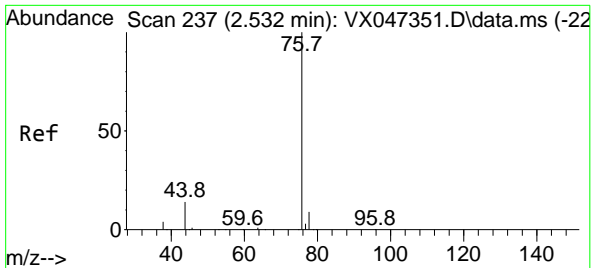
Tgt Ion: 59 Resp: 1258
 Ion Ratio Lower Upper
 59 100
 57 0.0 8.3 12.5#



#16
 Acetone
 Concen: 6.125 ug/l
 RT: 2.398 min Scan# 215
 Delta R.T. 0.006 min
 Lab File: VX047389.D
 Acq: 18 Aug 2025 17:44

Tgt Ion: 43 Resp: 6991
 Ion Ratio Lower Upper
 43 100
 58 37.9 24.8 37.2#

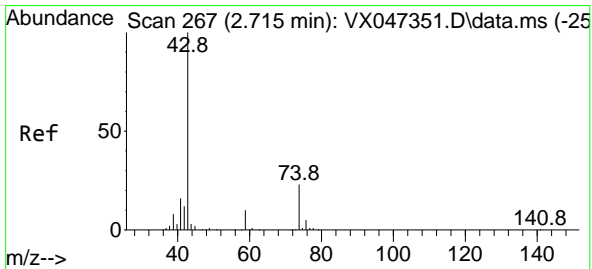
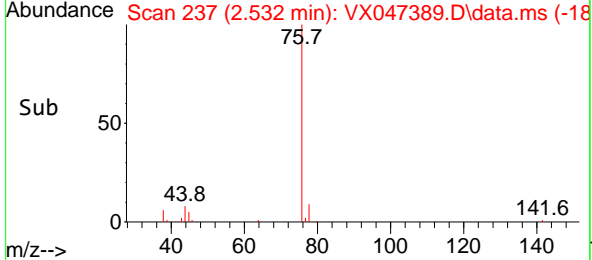
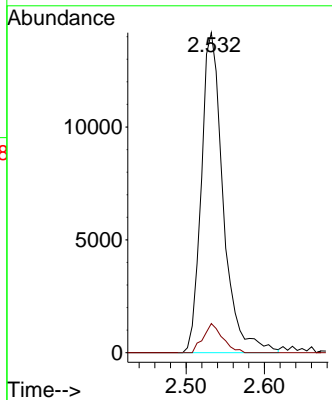
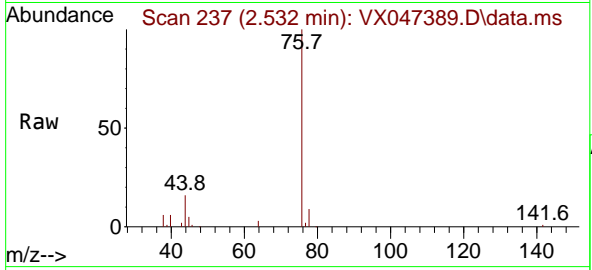




#17
 Carbon Disulfide
 Concen: 3.335 ug/l
 RT: 2.532 min Scan# 21
 Delta R.T. 0.000 min
 Lab File: VX047389.D
 Acq: 18 Aug 2025 17:44

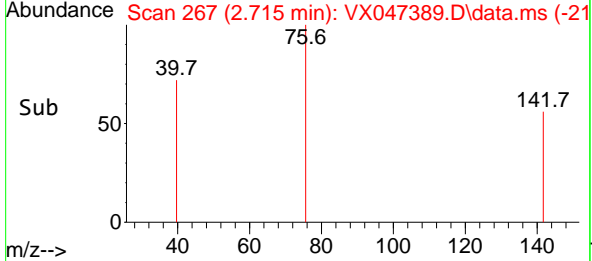
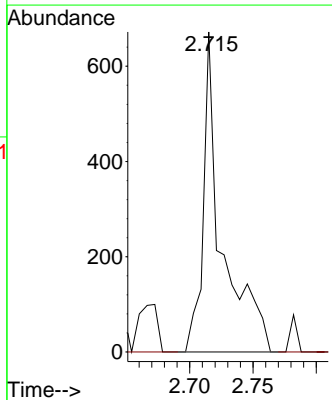
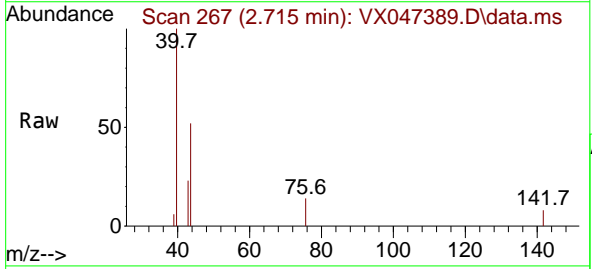
Instrument : MSVOA_X
 ClientSampleId : TW-22M-N

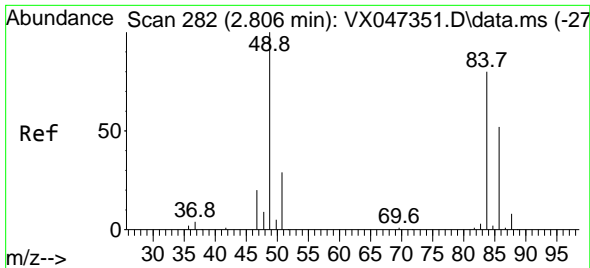
Tgt Ion: 76 Resp: 27495
 Ion Ratio Lower Upper
 76 100
 78 9.1 7.2 10.8



#18
 Methyl Acetate
 Concen: 0.232 ug/l
 RT: 2.715 min Scan# 267
 Delta R.T. 0.000 min
 Lab File: VX047389.D
 Acq: 18 Aug 2025 17:44

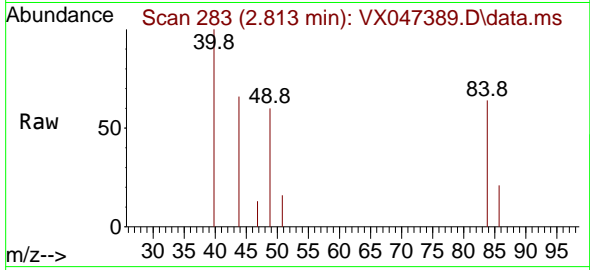
Tgt Ion: 43 Resp: 685
 Ion Ratio Lower Upper
 43 100
 74 0.0 18.4 27.6#





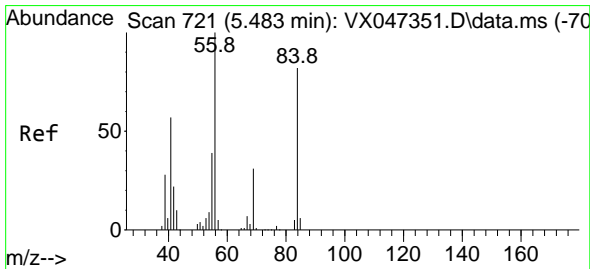
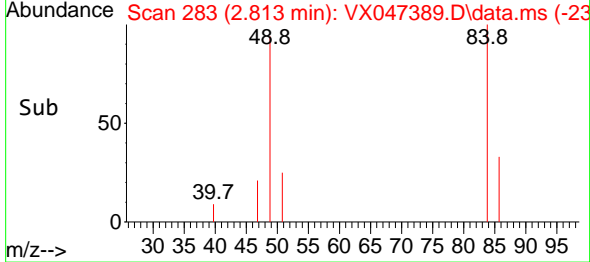
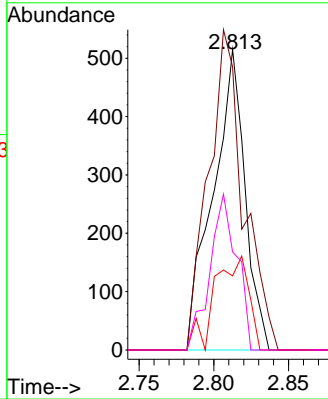
#20
 Methylene Chloride
 Concen: 0.253 ug/l
 RT: 2.813 min Scan# 21
 Delta R.T. 0.006 min
 Lab File: VX047389.D
 Acq: 18 Aug 2025 17:44

Instrument :
 MSVOA_X
 ClientSampleId :
 TW-22M-N

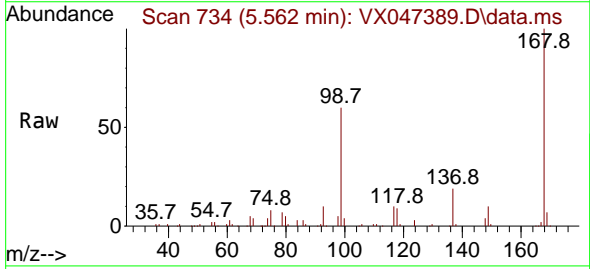


Tgt Ion: 84 Resp: 765

Ion	Ratio	Lower	Upper
84	100		
49	94.2	100.1	150.1#
51	24.7	29.5	44.3#
86	32.6	51.8	77.8#

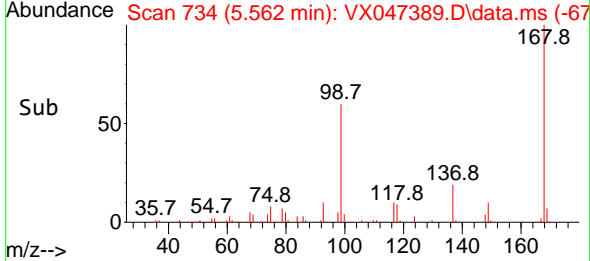
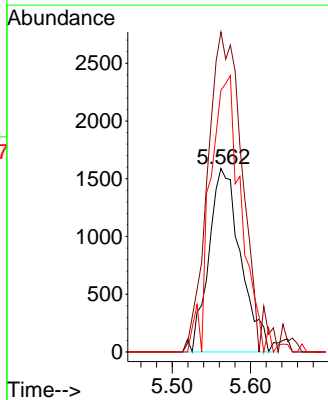


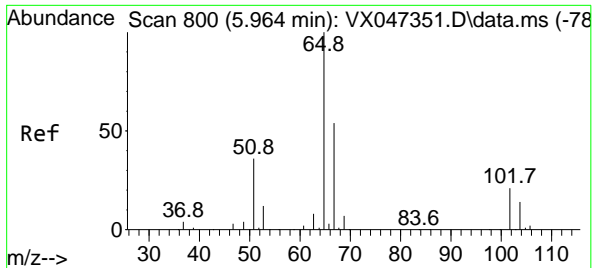
#31
 Cyclohexane
 Concen: 0.930 ug/l
 RT: 5.562 min Scan# 734
 Delta R.T. 0.079 min
 Lab File: VX047389.D
 Acq: 18 Aug 2025 17:44



Tgt Ion: 56 Resp: 4546

Ion	Ratio	Lower	Upper
56	100		
69	168.0	24.3	36.5#
84	137.5	65.3	97.9#

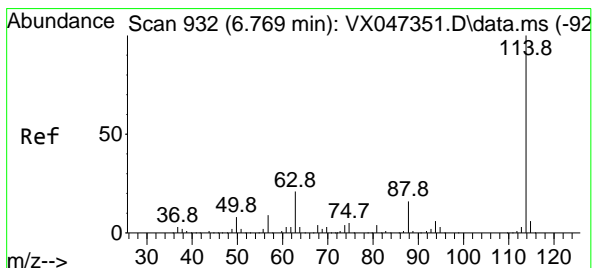
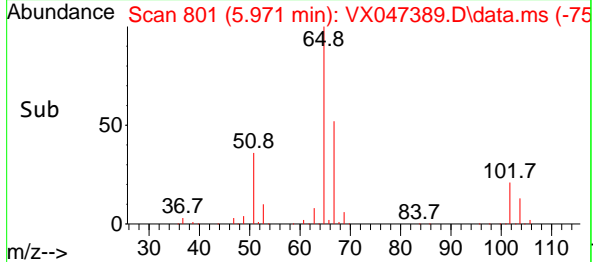
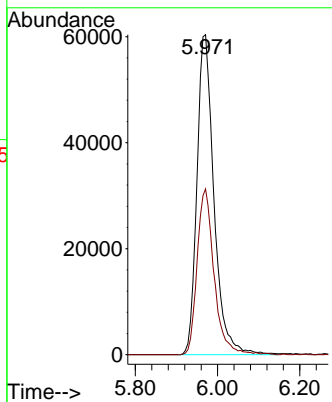
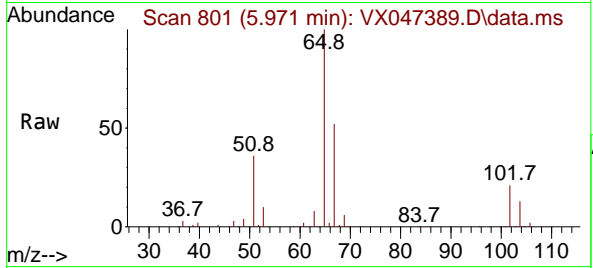




#33
 1,2-Dichloroethane-d4
 Concen: 57.180 ug/l
 RT: 5.971 min Scan# 801
 Delta R.T. 0.006 min
 Lab File: VX047389.D
 Acq: 18 Aug 2025 17:44

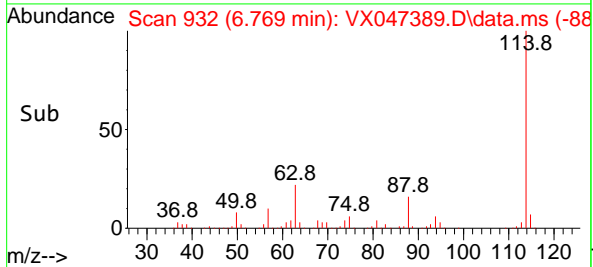
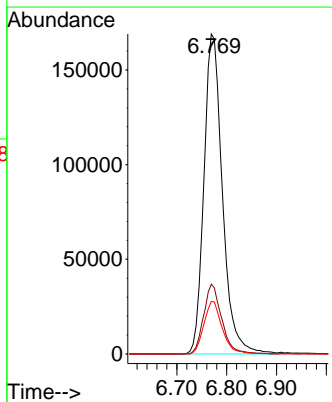
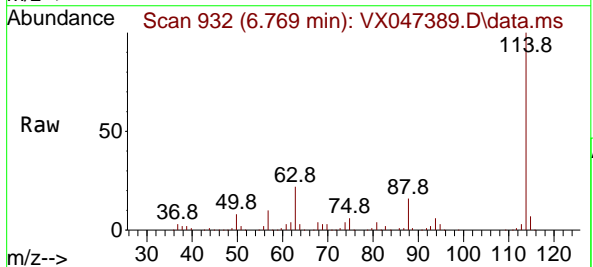
Instrument :
 MSVOA_X
 ClientSampleId :
 TW-22M-N

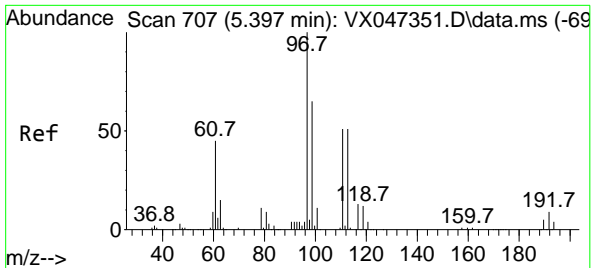
Tgt Ion: 65 Resp: 173632
 Ion Ratio Lower Upper
 65 100
 67 51.5 0.0 106.0



#34
 1,4-Difluorobenzene
 Concen: 50.000 ug/l
 RT: 6.769 min Scan# 932
 Delta R.T. 0.000 min
 Lab File: VX047389.D
 Acq: 18 Aug 2025 17:44

Tgt Ion: 114 Resp: 436090
 Ion Ratio Lower Upper
 114 100
 63 21.8 0.0 42.4
 88 16.4 0.0 33.0



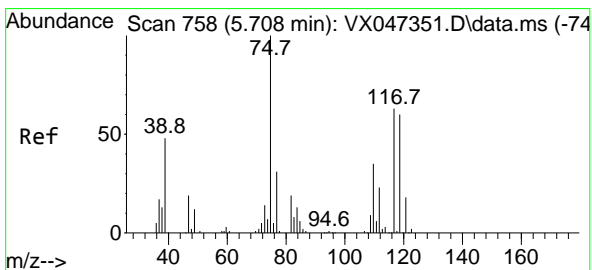
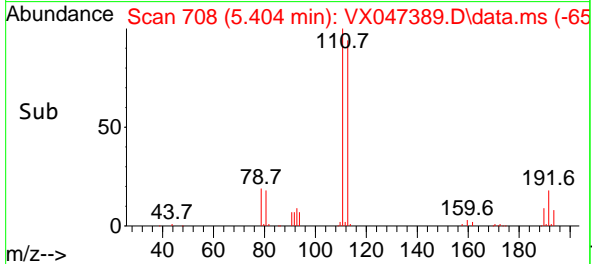
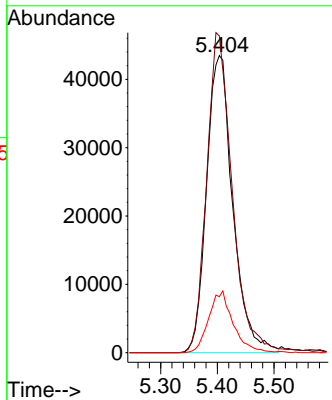
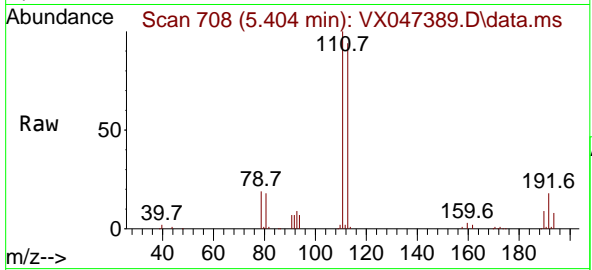


#35
 Dibromofluoromethane
 Concen: 49.381 ug/l
 RT: 5.404 min Scan# 707
 Delta R.T. 0.006 min
 Lab File: VX047389.D
 Acq: 18 Aug 2025 17:44

Instrument : MSVOA_X
 ClientSampleId : TW-22M-N

Tgt Ion: 113 Resp: 139762

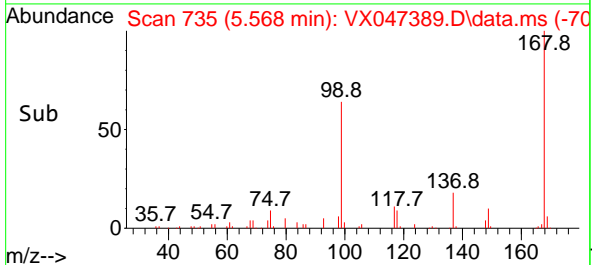
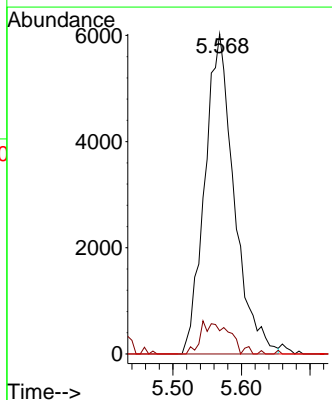
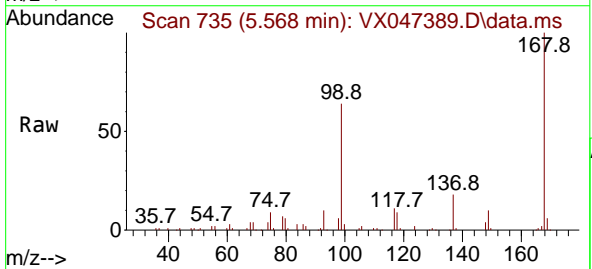
Ion	Ratio	Lower	Upper
113	100		
111	105.3	81.4	122.2
192	19.2	14.1	21.1

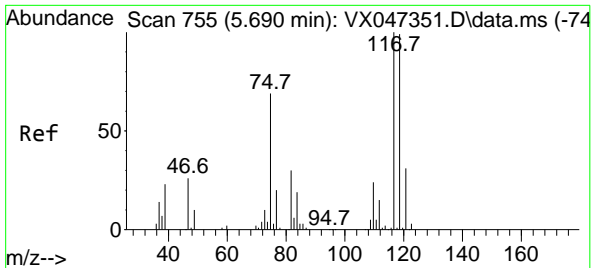


#36
 1,1-Dichloropropene
 Concen: 4.007 ug/l
 RT: 5.568 min Scan# 735
 Delta R.T. -0.140 min
 Lab File: VX047389.D
 Acq: 18 Aug 2025 17:44

Tgt Ion: 75 Resp: 17901

Ion	Ratio	Lower	Upper
75	100		
110	0.0	17.4	52.2#
77	0.0	24.4	36.6#



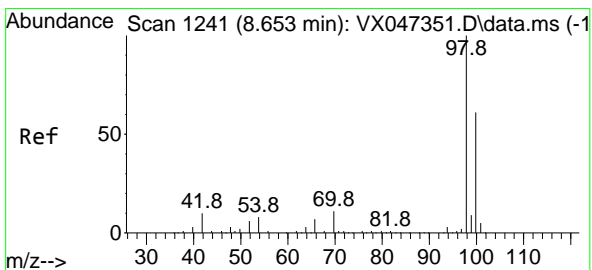
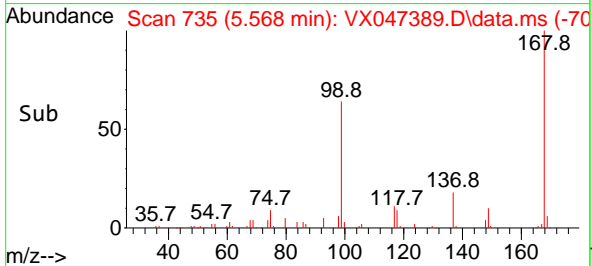
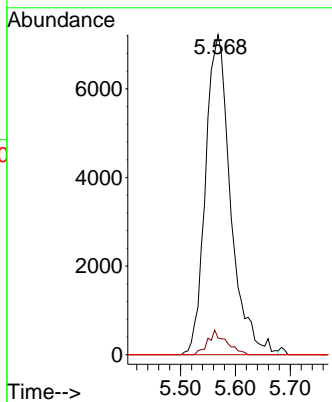
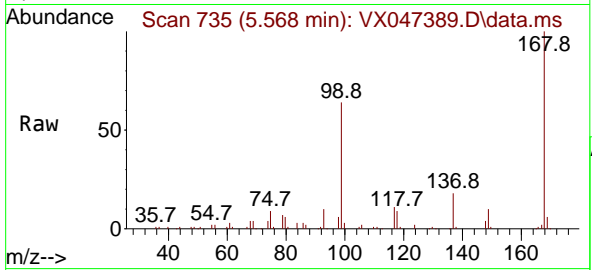


#38
 Carbon Tetrachloride
 Concen: 4.697 ug/l
 RT: 5.568 min Scan# 711
 Delta R.T. -0.122 min
 Lab File: VX047389.D
 Acq: 18 Aug 2025 17:44

Instrument : MSVOA_X
 ClientSampleId : TW-22M-N

Tgt Ion:117 Resp: 22931

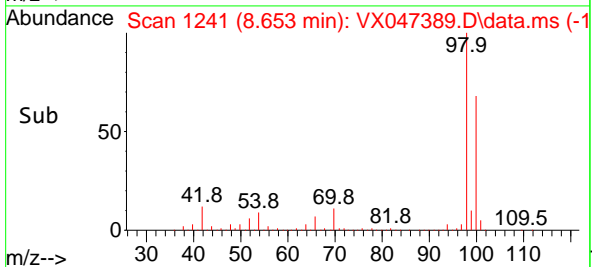
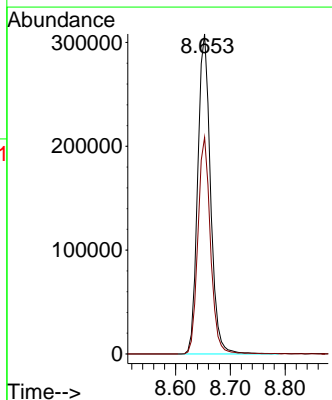
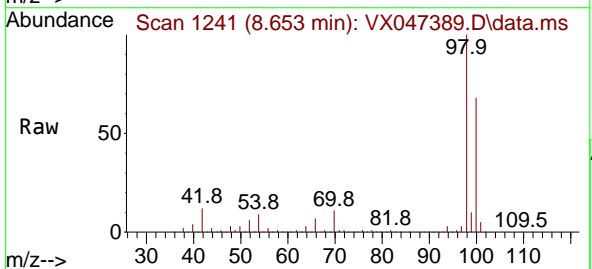
Ion	Ratio	Lower	Upper
117	100		
119	5.2	78.5	117.7#
121	0.0	24.7	37.1#

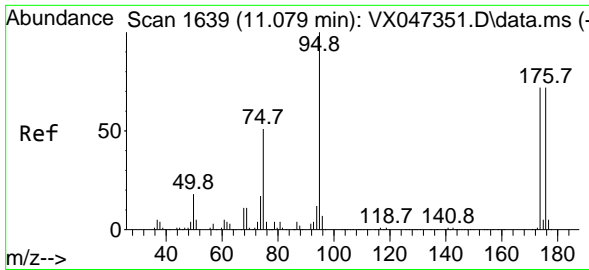


#50
 Toluene-d8
 Concen: 49.503 ug/l
 RT: 8.653 min Scan# 1241
 Delta R.T. 0.000 min
 Lab File: VX047389.D
 Acq: 18 Aug 2025 17:44

Tgt Ion: 98 Resp: 500774

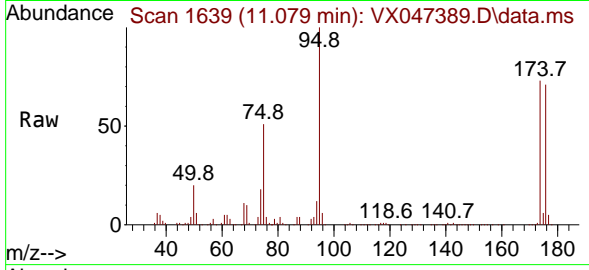
Ion	Ratio	Lower	Upper
98	100		
100	66.5	53.9	80.9



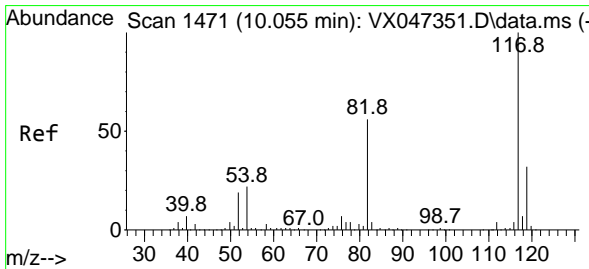
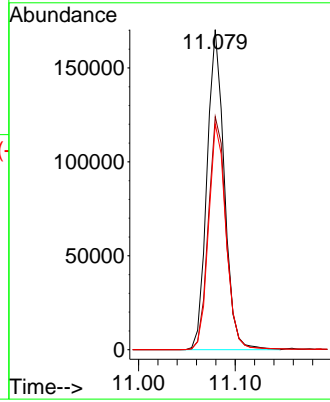
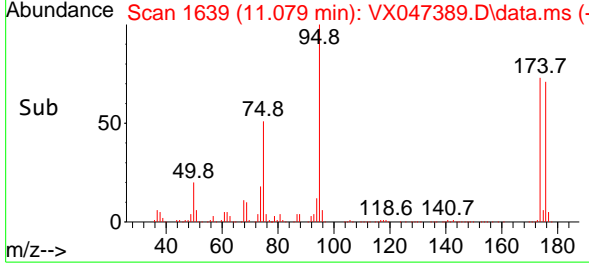


#62
 4-Bromofluorobenzene
 Concen: 56.891 ug/l
 RT: 11.079 min Scan# 1639
 Delta R.T. 0.000 min
 Lab File: VX047389.D
 Acq: 18 Aug 2025 17:44

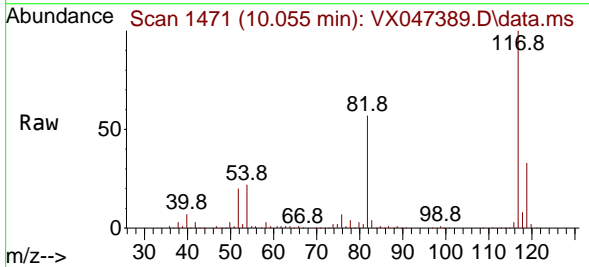
Instrument : MSVOA_X
 ClientSampleId : TW-22M-N



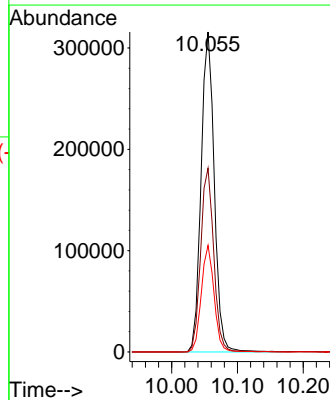
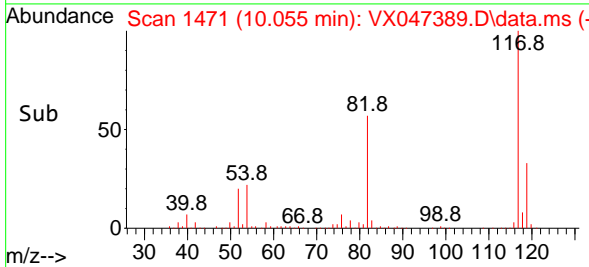
Tgt Ion: 95 Resp: 212376
 Ion Ratio Lower Upper
 95 100
 174 74.5 0.0 148.0
 176 71.1 0.0 145.4

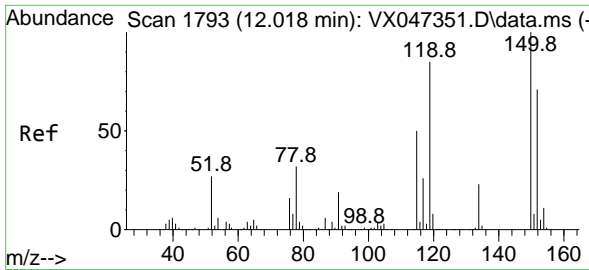


#63
 Chlorobenzene-d5
 Concen: 50.000 ug/l
 RT: 10.055 min Scan# 1471
 Delta R.T. 0.000 min
 Lab File: VX047389.D
 Acq: 18 Aug 2025 17:44



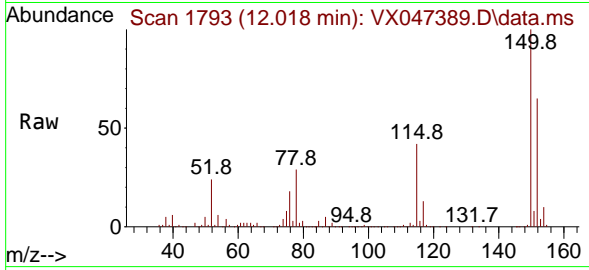
Tgt Ion: 117 Resp: 439636
 Ion Ratio Lower Upper
 117 100
 82 57.4 45.0 67.4
 119 33.3 25.8 38.8



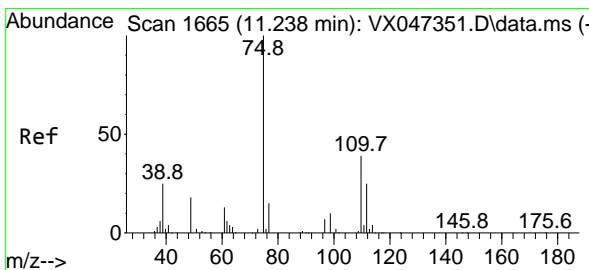
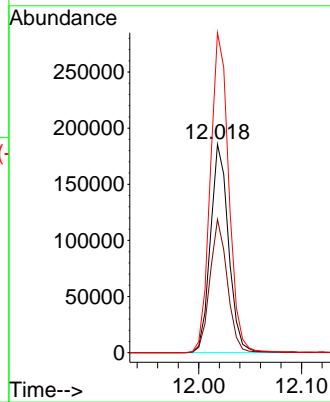
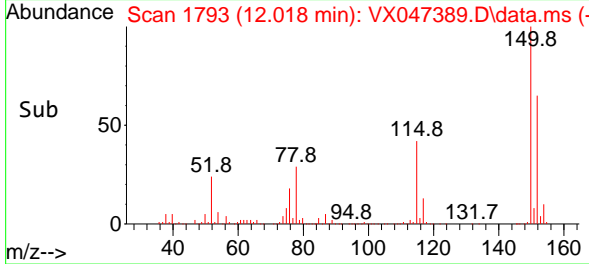


#72
 1,4-Dichlorobenzene-d4
 Concen: 50.000 ug/l
 RT: 12.018 min Scan# 1
 Delta R.T. 0.000 min
 Lab File: VX047389.D
 Acq: 18 Aug 2025 17:44

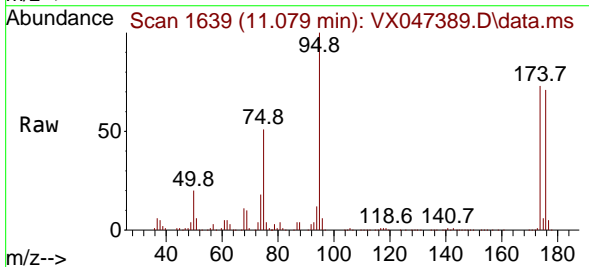
Instrument :
 MSVOA_X
 ClientSampleId :
 TW-22M-N



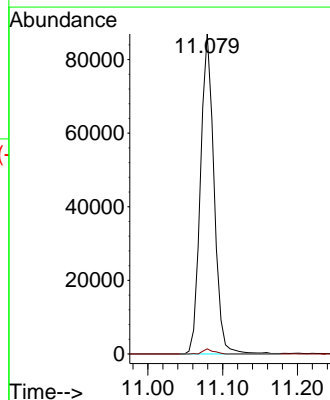
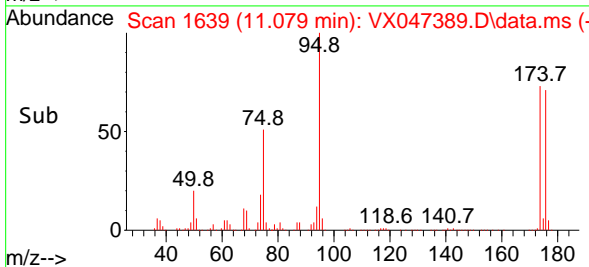
Tgt Ion:152 Resp: 227147
 Ion Ratio Lower Upper
 152 100
 115 61.9 44.6 133.8
 150 156.8 0.0 349.8

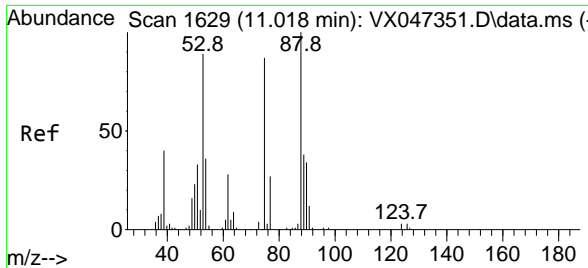


#76
 1,2,3-Trichloropropane
 Concen: 26.358 ug/l
 RT: 11.079 min Scan# 1639
 Delta R.T. -0.158 min
 Lab File: VX047389.D
 Acq: 18 Aug 2025 17:44



Tgt Ion: 75 Resp: 109810
 Ion Ratio Lower Upper
 75 100
 77 1.3 19.4 58.2#





#81
 trans-1,4-Dichloro-2-butene
 Concen: 104.415 ug/l
 RT: 11.079 min Scan# 10
 Delta R.T. 0.061 min
 Lab File: VX047389.D
 Acq: 18 Aug 2025 17:44

Instrument :
 MSVOA_X
 ClientSampleId :
 TW-22M-N

Tgt Ion: 75 Resp: 109810

Ion	Ratio	Lower	Upper
75	100		
53	0.1	85.2	127.8#
89	0.0	36.7	55.1#

