

Data Path : Z:\voasrv\HPCHEM1\MSVOA_X\Data\VX081825\
 Data File : VX047390.D
 Acq On : 18 Aug 2025 18:05
 Operator : JC/MD
 Sample : Q2815-15
 Misc : 5.0mL/MSVOA_X/WATER
 ALS Vial : 21 Sample Multiplier: 1

Instrument :
 MSVOA_X
 ClientSampleId :
 TW-17M-E

Quant Time: Aug 19 01:47:26 2025
 Quant Method : Z:\voasrv\HPCHEM1\MSVOA_X\Method\82X081525W.M
 Quant Title : SW846 8260
 QLast Update : Mon Aug 18 04:18:28 2025
 Response via : Initial Calibration

Compound	R.T.	QIon	Response	Conc	Units	Dev(Min)

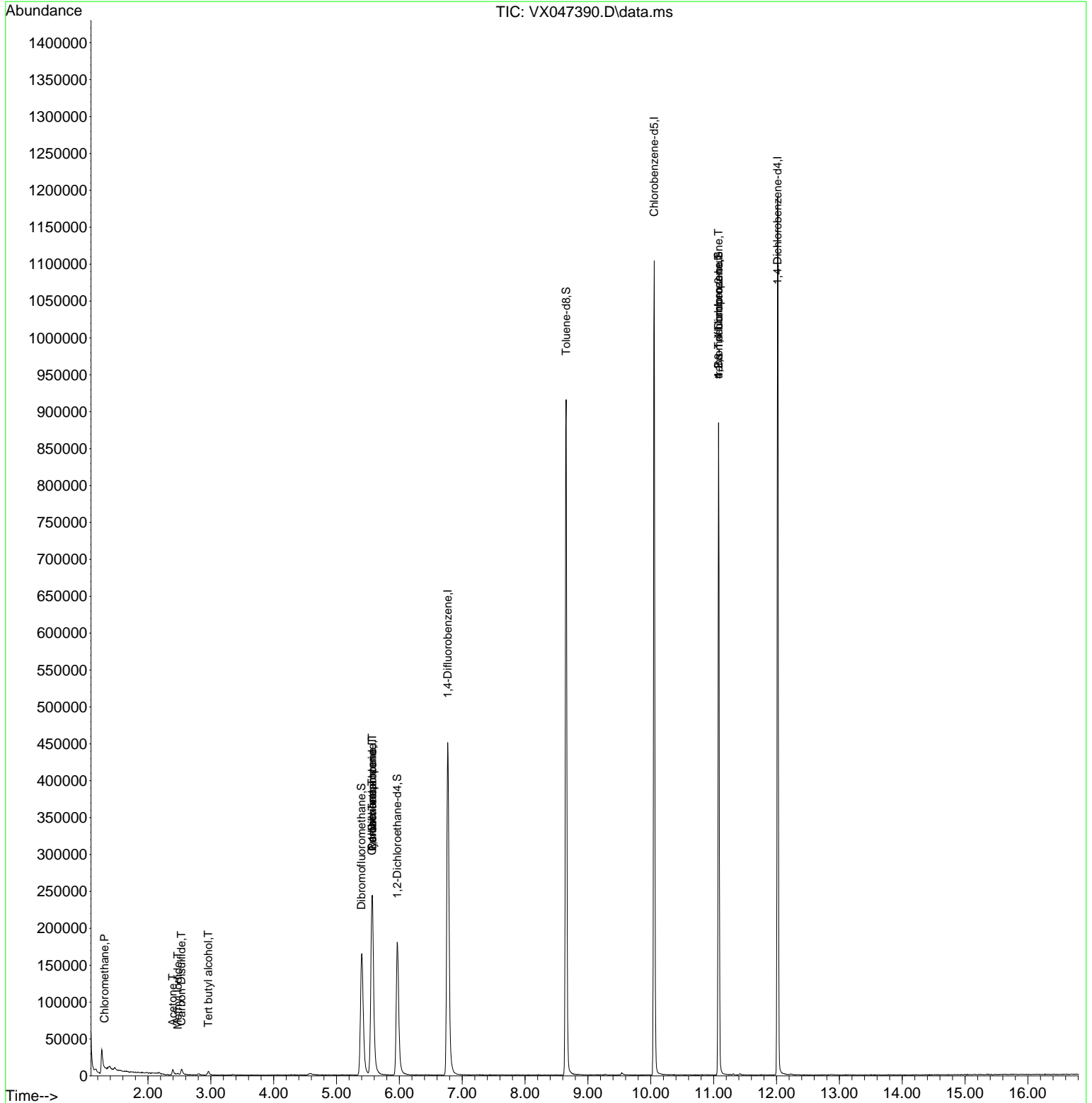
Internal Standards						
1) Pentafluorobenzene	5.568	168	249880	50.000	ug/l	0.00
34) 1,4-Difluorobenzene	6.769	114	486066	50.000	ug/l	0.00
63) Chlorobenzene-d5	10.055	117	487332	50.000	ug/l	0.00
72) 1,4-Dichlorobenzene-d4	12.018	152	241466	50.000	ug/l	0.00
System Monitoring Compounds						
33) 1,2-Dichloroethane-d4	5.964	65	191023	54.622	ug/l	0.00
Spiked Amount	50.000	Range	78 - 117	Recovery	=	109.240%
35) Dibromofluoromethane	5.397	113	160622	50.917	ug/l	0.00
Spiked Amount	50.000	Range	75 - 124	Recovery	=	101.840%
50) Toluene-d8	8.653	98	560013	49.667	ug/l	0.00
Spiked Amount	50.000	Range	92 - 112	Recovery	=	99.340%
62) 4-Bromofluorobenzene	11.079	95	229359	55.123	ug/l	0.00
Spiked Amount	50.000	Range	83 - 123	Recovery	=	110.240%
Target Compounds						
					Qvalue	
3) Chloromethane	1.307	50	701	0.245	ug/l #	68
10) Methyl Iodide	2.477	142	2041	0.386	ug/l #	94
11) Tert butyl alcohol	2.959	59	2495	8.201	ug/l #	78
16) Acetone	2.392	43	9634	7.329	ug/l	98
17) Carbon Disulfide	2.532	76	7851	0.827	ug/l	99
31) Cyclohexane	5.562	56	5489	0.975	ug/l #	1
36) 1,1-Dichloropropene	5.568	75	21334	4.284	ug/l #	50
38) Carbon Tetrachloride	5.568	117	26812	4.927	ug/l #	15
76) 1,2,3-Trichloropropane	11.079	75	119045	26.880	ug/l #	38
81) trans-1,4-Dichloro-2-b...	11.079	75	119045	106.328	ug/l #	7

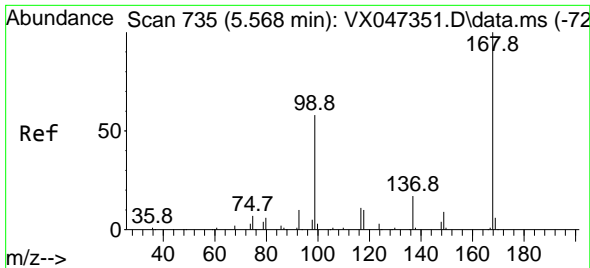
(#) = qualifier out of range (m) = manual integration (+) = signals summed

Data Path : Z:\voasrv\HPCHEM1\MSVOA_X\Data\VX081825\
 Data File : VX047390.D
 Acq On : 18 Aug 2025 18:05
 Operator : JC/MD
 Sample : Q2815-15
 Misc : 5.0mL/MSVOA_X/WATER
 ALS Vial : 21 Sample Multiplier: 1

Instrument :
 MSVOA_X
ClientSampleId :
 TW-17M-E

Quant Time: Aug 19 01:47:26 2025
 Quant Method : Z:\voasrv\HPCHEM1\MSVOA_X\Method\82X081525W.M
 Quant Title : SW846 8260
 QLast Update : Mon Aug 18 04:18:28 2025
 Response via : Initial Calibration

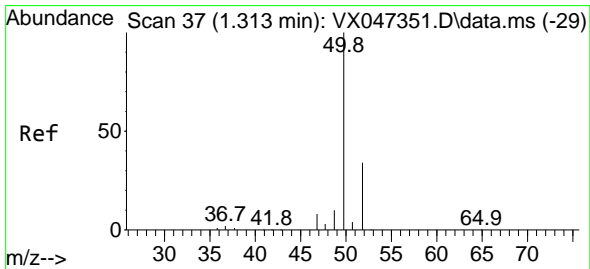
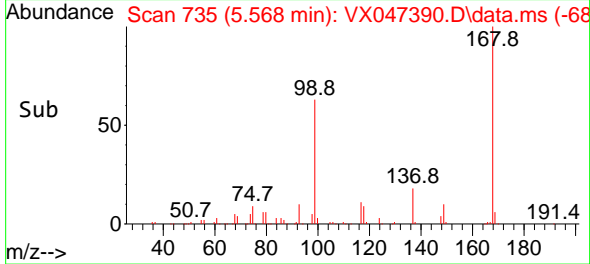
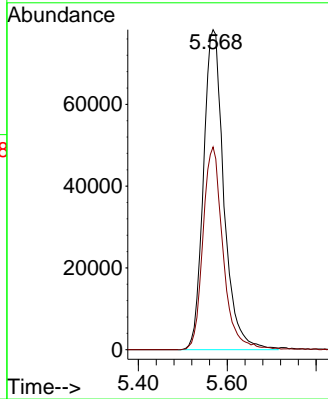
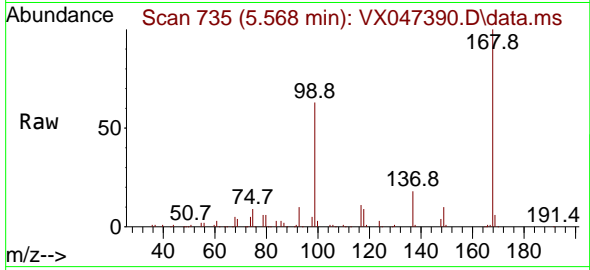




#1
 Pentafluorobenzene
 Concen: 50.000 ug/l
 RT: 5.568 min Scan# 71
 Delta R.T. 0.000 min
 Lab File: VX047390.D
 Acq: 18 Aug 2025 18:05

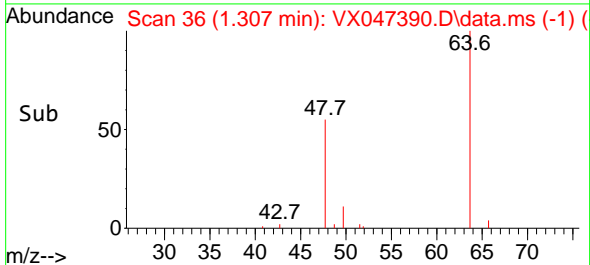
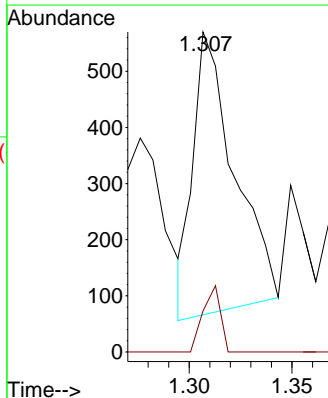
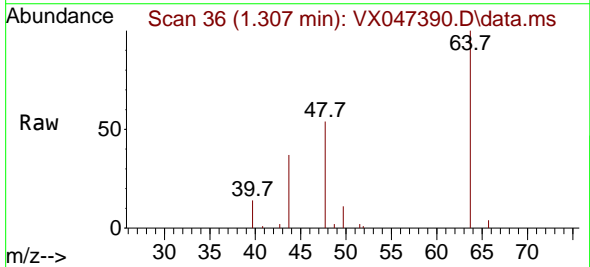
Instrument : MSVOA_X
 ClientSampleId : TW-17M-E

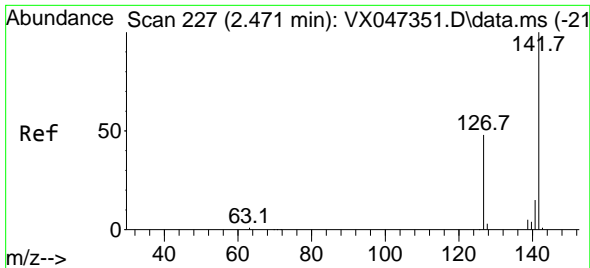
Tgt Ion:168 Resp: 249880
 Ion Ratio Lower Upper
 168 100
 99 63.4 47.9 71.9



#3
 Chloromethane
 Concen: 0.245 ug/l
 RT: 1.307 min Scan# 36
 Delta R.T. -0.006 min
 Lab File: VX047390.D
 Acq: 18 Aug 2025 18:05

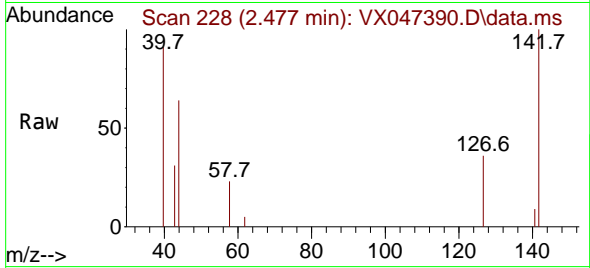
Tgt Ion: 50 Resp: 701
 Ion Ratio Lower Upper
 50 100
 52 15.4 27.0 40.4#



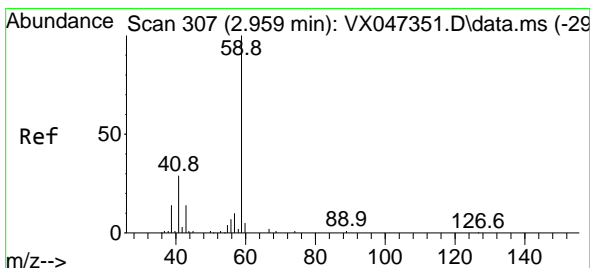
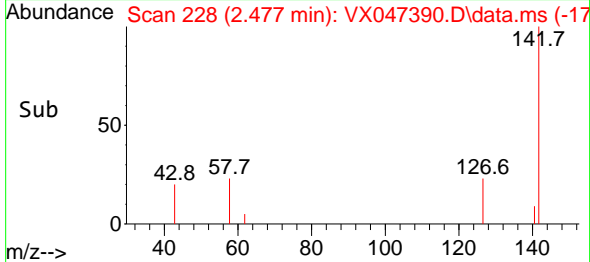
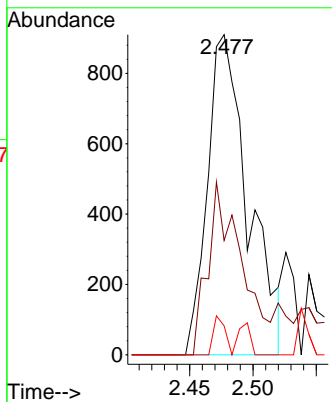


#10
Methyl Iodide
Concen: 0.386 ug/l
RT: 2.477 min Scan# 21
Delta R.T. 0.006 min
Lab File: VX047390.D
Acq: 18 Aug 2025 18:05

Instrument : MSVOA_X
ClientSampleId : TW-17M-E

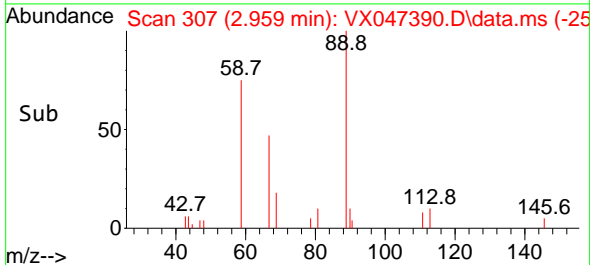
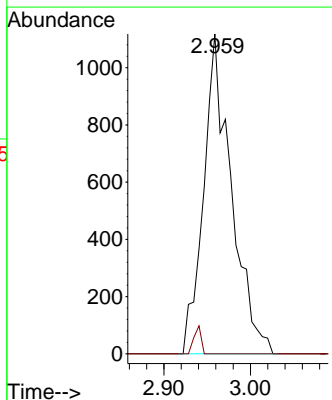
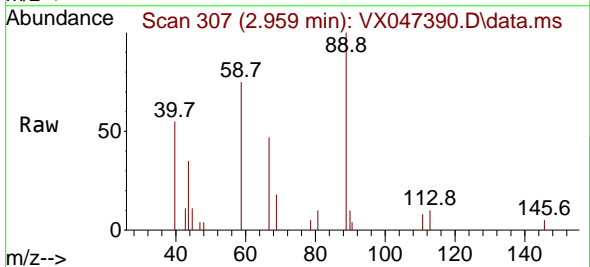


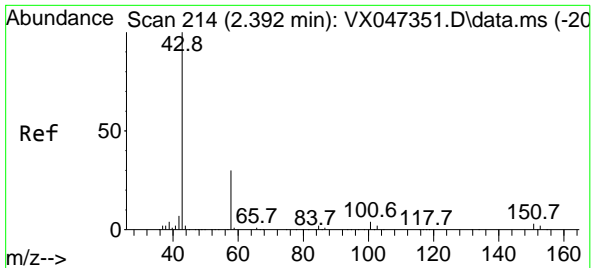
Tgt Ion:142 Resp: 2041
Ion Ratio Lower Upper
142 100
127 44.9 36.1 54.1
141 3.5 11.1 16.7#



#11
Tert butyl alcohol
Concen: 8.201 ug/l
RT: 2.959 min Scan# 307
Delta R.T. 0.000 min
Lab File: VX047390.D
Acq: 18 Aug 2025 18:05

Tgt Ion: 59 Resp: 2495
Ion Ratio Lower Upper
59 100
57 2.2 8.3 12.5#

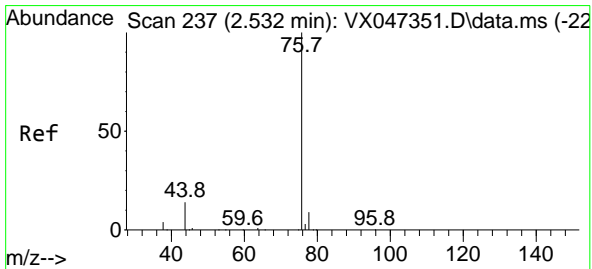
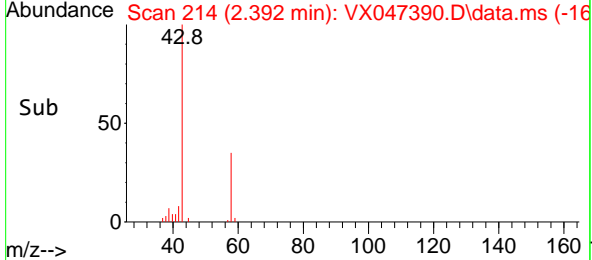
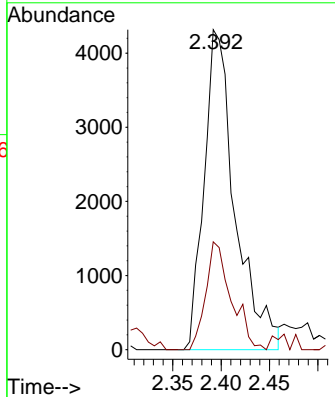
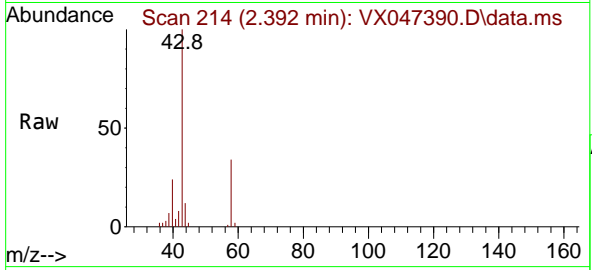




#16
 Acetone
 Concen: 7.329 ug/l
 RT: 2.392 min Scan# 214
 Delta R.T. 0.000 min
 Lab File: VX047390.D
 Acq: 18 Aug 2025 18:05

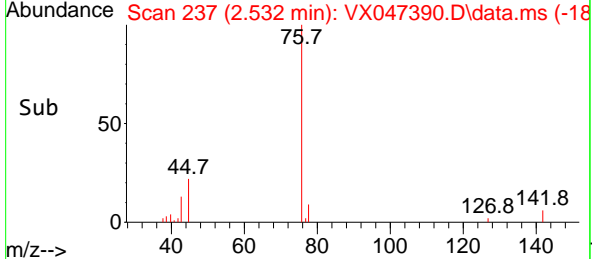
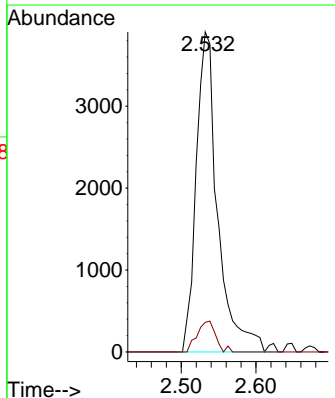
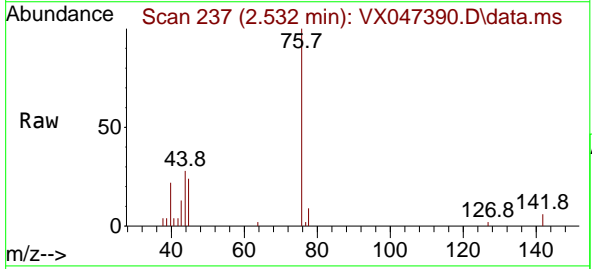
Instrument : MSVOA_X
 ClientSampleId : TW-17M-E

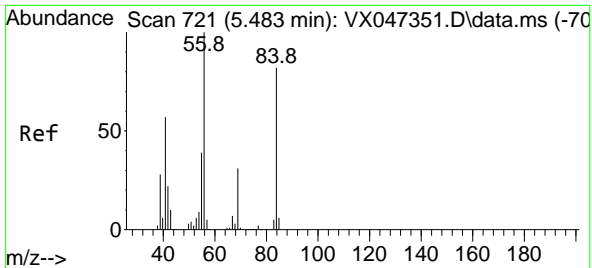
Tgt Ion: 43 Resp: 9634
 Ion Ratio Lower Upper
 43 100
 58 32.1 24.8 37.2



#17
 Carbon Disulfide
 Concen: 0.827 ug/l
 RT: 2.532 min Scan# 237
 Delta R.T. 0.000 min
 Lab File: VX047390.D
 Acq: 18 Aug 2025 18:05

Tgt Ion: 76 Resp: 7851
 Ion Ratio Lower Upper
 76 100
 78 9.3 7.2 10.8

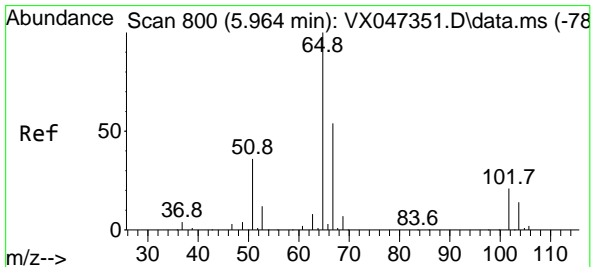
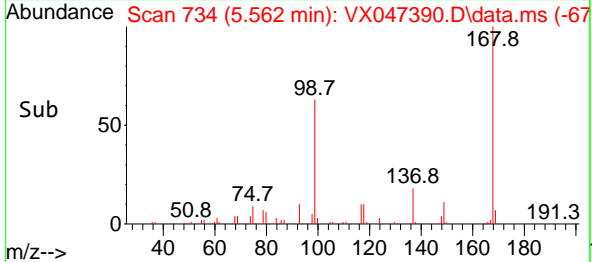
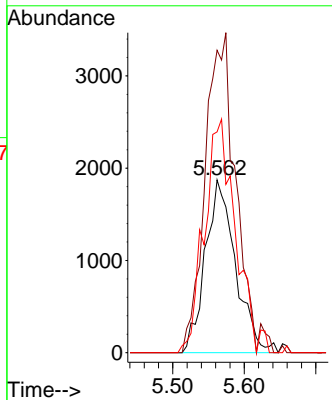
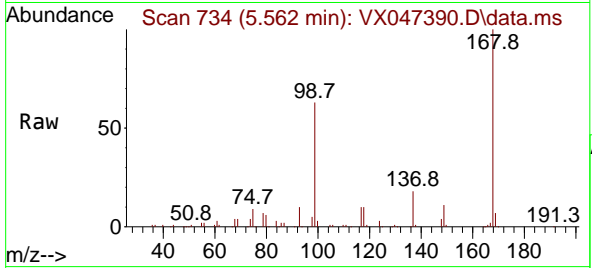




#31
 Cyclohexane
 Concen: 0.975 ug/l
 RT: 5.562 min Scan# 711
 Delta R.T. 0.079 min
 Lab File: VX047390.D
 Acq: 18 Aug 2025 18:05

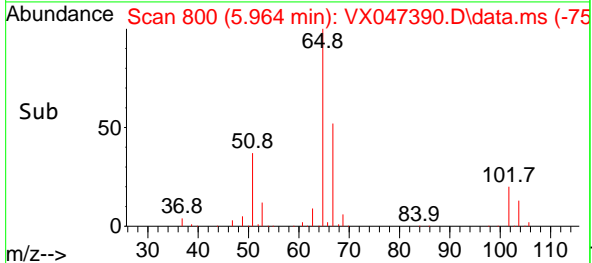
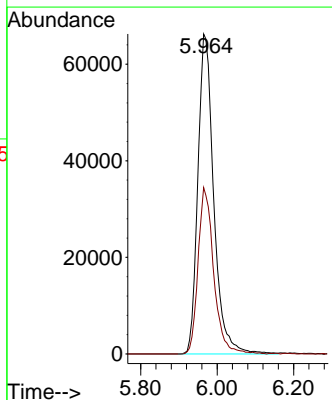
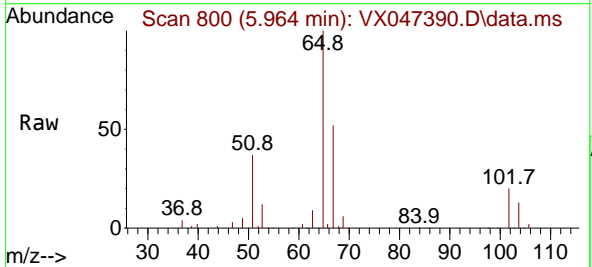
Instrument :
 MSVOA_X
 ClientSampleId :
 TW-17M-E

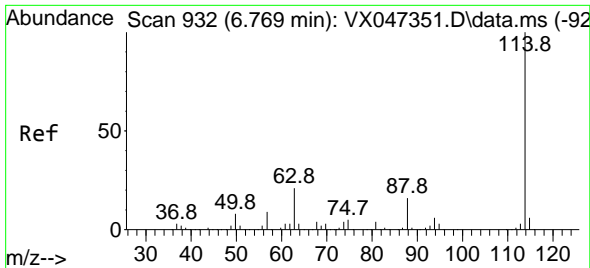
Tgt Ion: 56 Resp: 5489
 Ion Ratio Lower Upper
 56 100
 69 175.0 24.3 36.5#
 84 132.5 65.3 97.9#



#33
 1,2-Dichloroethane-d4
 Concen: 54.622 ug/l
 RT: 5.964 min Scan# 800
 Delta R.T. 0.000 min
 Lab File: VX047390.D
 Acq: 18 Aug 2025 18:05

Tgt Ion: 65 Resp: 191023
 Ion Ratio Lower Upper
 65 100
 67 51.2 0.0 106.0



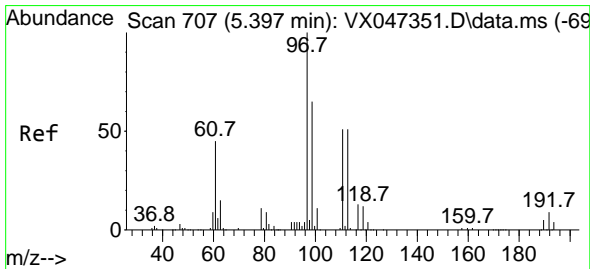
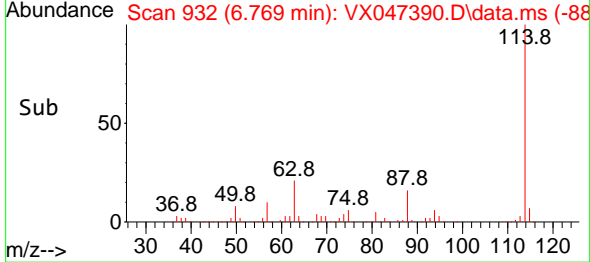
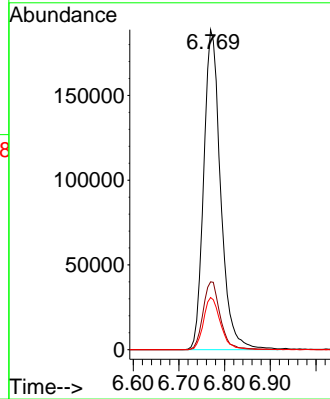
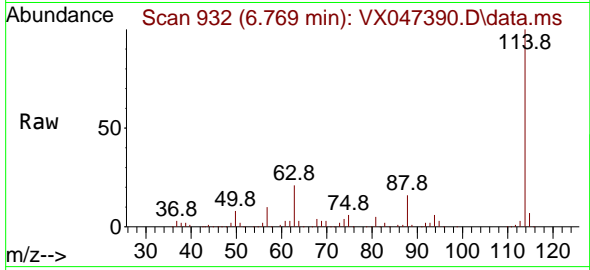


#34
 1,4-Difluorobenzene
 Concen: 50.000 ug/l
 RT: 6.769 min Scan# 911
 Delta R.T. 0.000 min
 Lab File: VX047390.D
 Acq: 18 Aug 2025 18:05

Instrument :
 MSVOA_X
 ClientSampleId :
 TW-17M-E

Tgt Ion:114 Resp: 486066

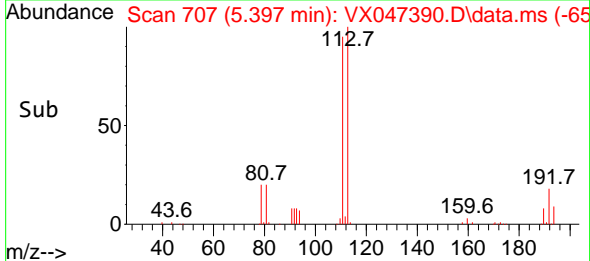
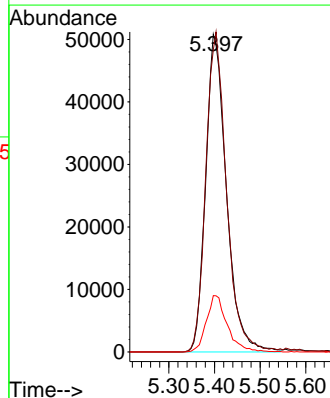
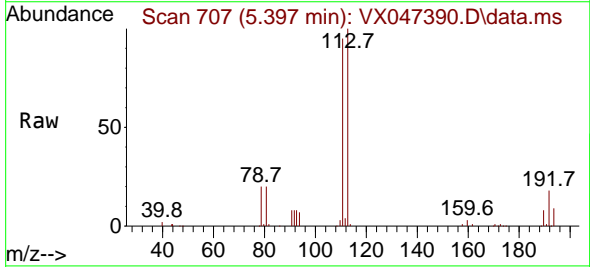
Ion	Ratio	Lower	Upper
114	100		
63	21.2	0.0	42.4
88	16.3	0.0	33.0

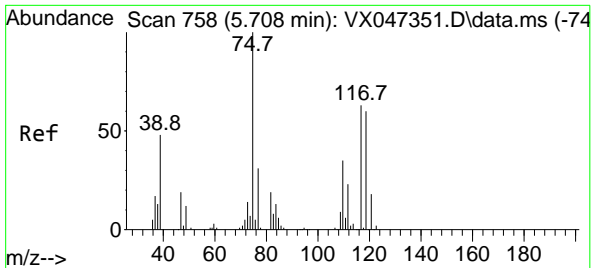


#35
 Dibromofluoromethane
 Concen: 50.917 ug/l
 RT: 5.397 min Scan# 707
 Delta R.T. 0.000 min
 Lab File: VX047390.D
 Acq: 18 Aug 2025 18:05

Tgt Ion:113 Resp: 160622

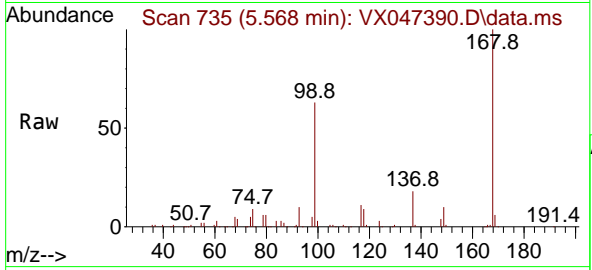
Ion	Ratio	Lower	Upper
113	100		
111	100.5	81.4	122.2
192	17.8	14.1	21.1



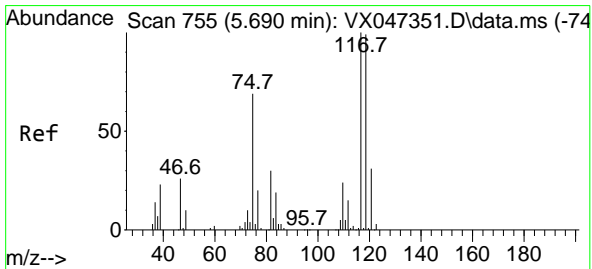
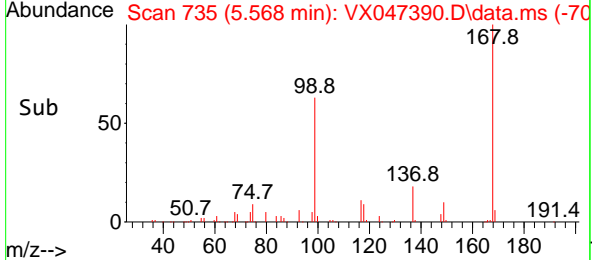
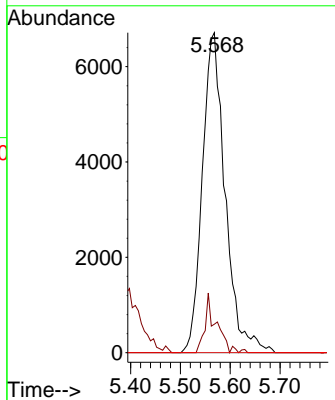


#36
 1,1-Dichloropropene
 Concen: 4.284 ug/l
 RT: 5.568 min Scan# 71
 Delta R.T. -0.140 min
 Lab File: VX047390.D
 Acq: 18 Aug 2025 18:05

Instrument : MSVOA_X
 ClientSampleId : TW-17M-E

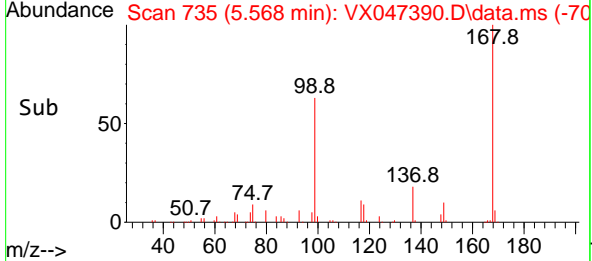
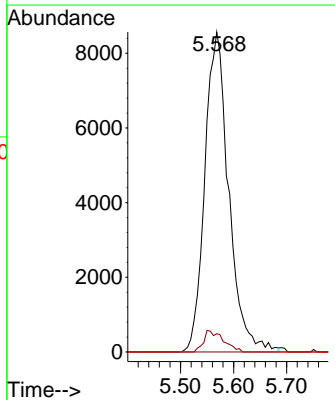
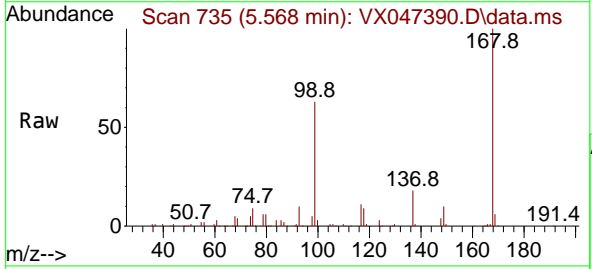


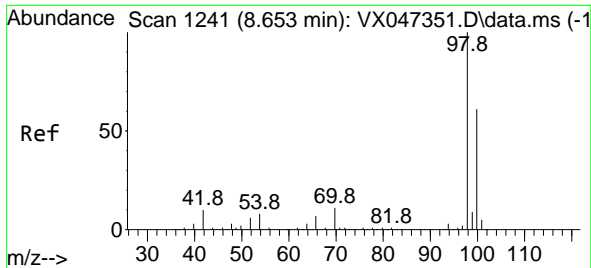
Tgt Ion: 75 Resp: 21334
 Ion Ratio Lower Upper
 75 100
 110 9.2 17.4 52.2#
 77 0.0 24.4 36.6#



#38
 Carbon Tetrachloride
 Concen: 4.927 ug/l
 RT: 5.568 min Scan# 735
 Delta R.T. -0.122 min
 Lab File: VX047390.D
 Acq: 18 Aug 2025 18:05

Tgt Ion: 117 Resp: 26812
 Ion Ratio Lower Upper
 117 100
 119 5.7 78.5 117.7#
 121 0.0 24.7 37.1#

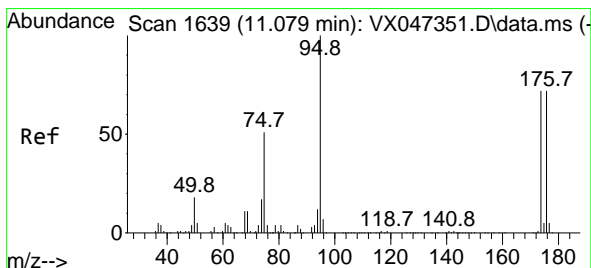
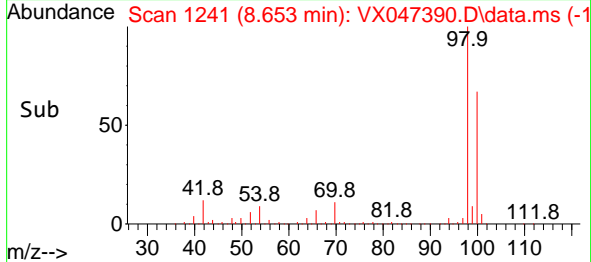
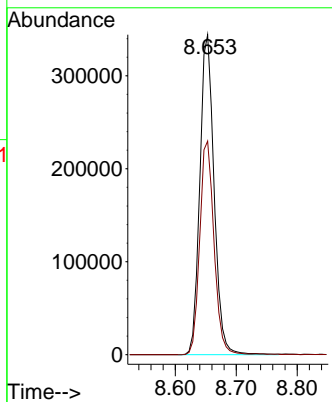
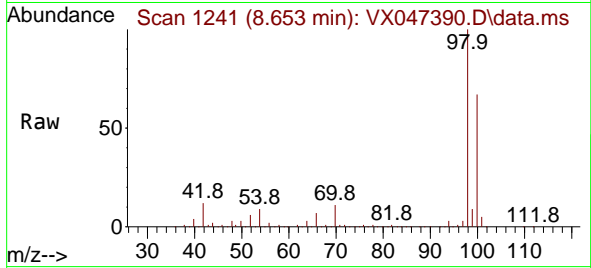




#50
 Toluene-d8
 Concen: 49.667 ug/l
 RT: 8.653 min Scan# 1111
 Delta R.T. 0.000 min
 Lab File: VX047390.D
 Acq: 18 Aug 2025 18:05

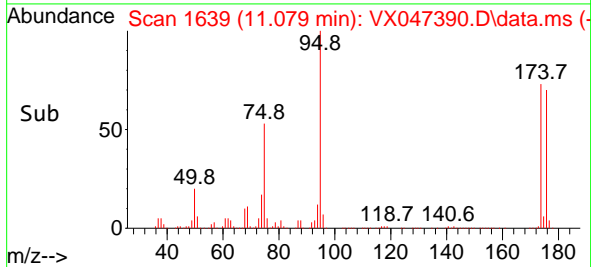
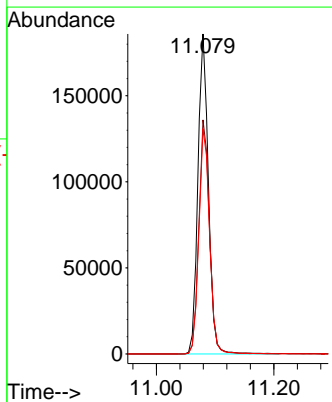
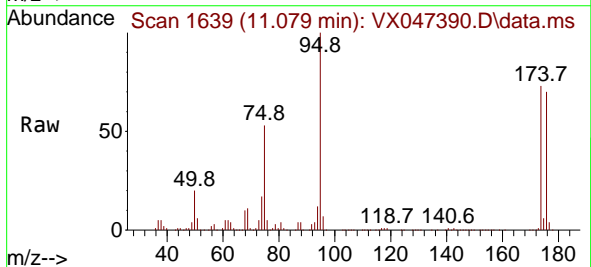
Instrument : MSVOA_X
 ClientSampleId : TW-17M-E

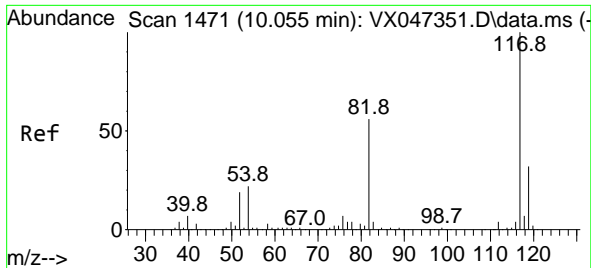
Tgt Ion: 98 Resp: 560013
 Ion Ratio Lower Upper
 98 100
 100 66.8 53.9 80.9



#62
 4-Bromofluorobenzene
 Concen: 55.123 ug/l
 RT: 11.079 min Scan# 1639
 Delta R.T. 0.000 min
 Lab File: VX047390.D
 Acq: 18 Aug 2025 18:05

Tgt Ion: 95 Resp: 229359
 Ion Ratio Lower Upper
 95 100
 174 74.6 0.0 148.0
 176 71.9 0.0 145.4



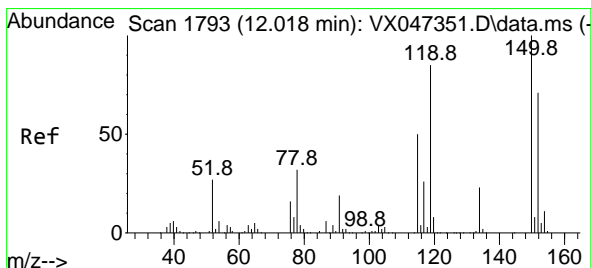
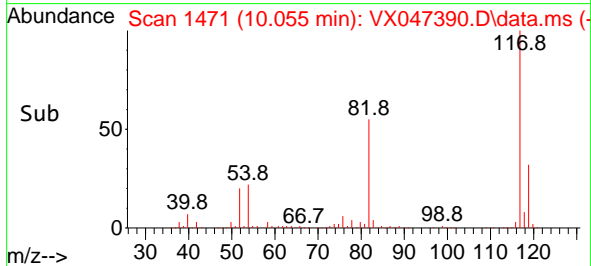
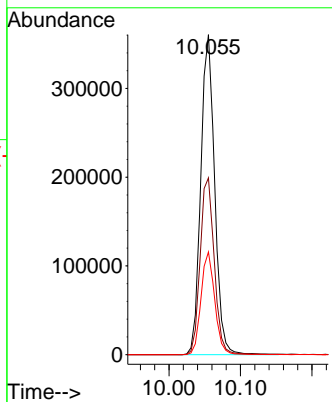
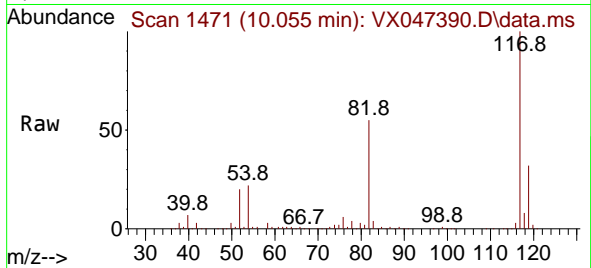


#63
 Chlorobenzene-d5
 Concen: 50.000 ug/l
 RT: 10.055 min Scan# 1471
 Delta R.T. 0.000 min
 Lab File: VX047390.D
 Acq: 18 Aug 2025 18:05

Instrument : MSVOA_X
 ClientSampleId : TW-17M-E

Tgt Ion:117 Resp: 487332

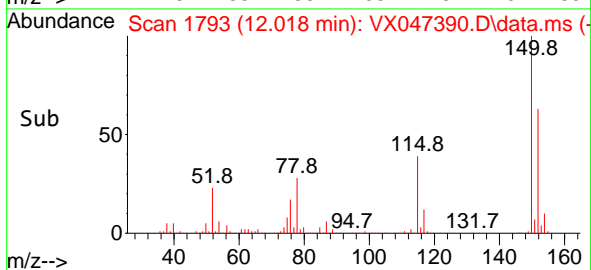
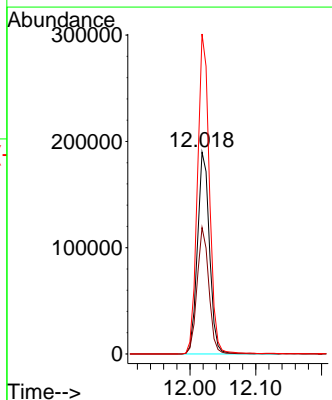
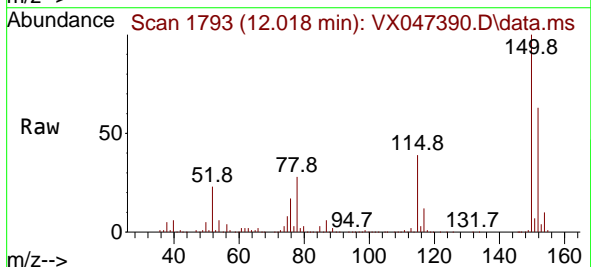
Ion	Ratio	Lower	Upper
117	100		
82	55.2	45.0	67.4
119	32.1	25.8	38.8

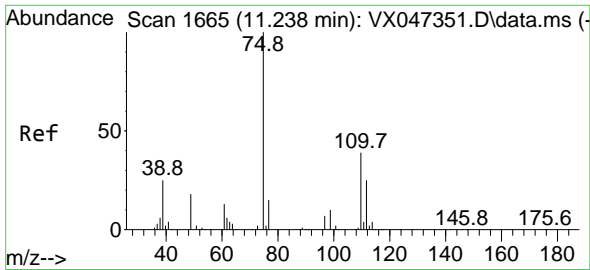


#72
 1,4-Dichlorobenzene-d4
 Concen: 50.000 ug/l
 RT: 12.018 min Scan# 1793
 Delta R.T. 0.000 min
 Lab File: VX047390.D
 Acq: 18 Aug 2025 18:05

Tgt Ion:152 Resp: 241466

Ion	Ratio	Lower	Upper
152	100		
115	61.3	44.6	133.8
150	157.3	0.0	349.8

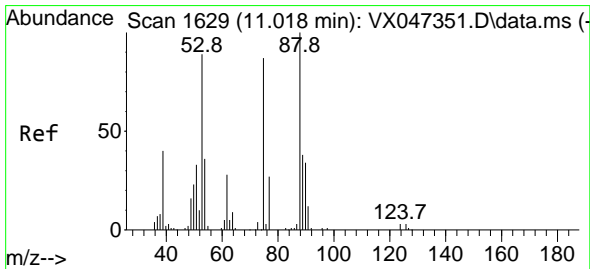
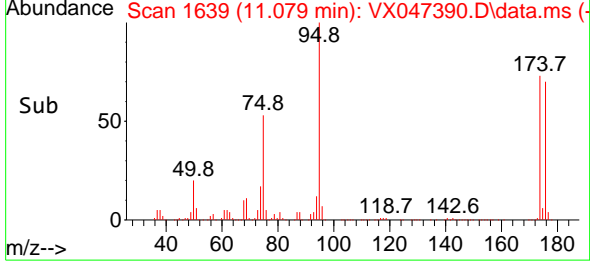
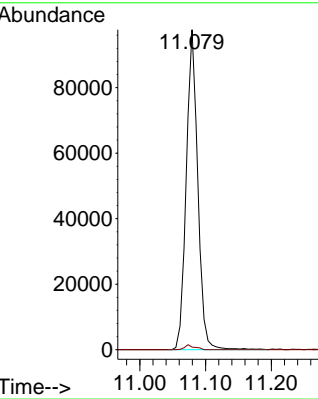
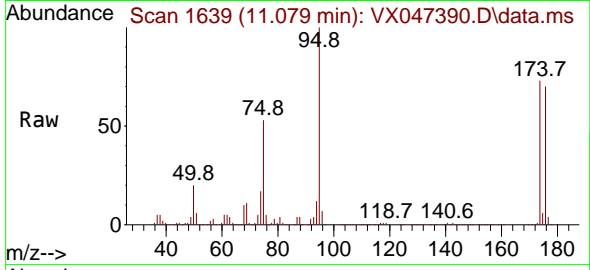




#76
 1,2,3-Trichloropropane
 Concen: 26.880 ug/l
 RT: 11.079 min Scan# 1639
 Delta R.T. -0.158 min
 Lab File: VX047390.D
 Acq: 18 Aug 2025 18:05

Instrument : MSVOA_X
 ClientSampleId : TW-17M-E

Tgt Ion: 75 Resp: 119045
 Ion Ratio Lower Upper
 75 100
 77 1.3 19.4 58.2#



#81
 trans-1,4-Dichloro-2-butene
 Concen: 106.328 ug/l
 RT: 11.079 min Scan# 1639
 Delta R.T. 0.061 min
 Lab File: VX047390.D
 Acq: 18 Aug 2025 18:05

Tgt Ion: 75 Resp: 119045
 Ion Ratio Lower Upper
 75 100
 53 0.1 85.2 127.8#
 89 0.0 36.7 55.1#

