

Data Path : Z:\voasrv\HPCHEM1\MSVOA_X\Data\VX081825\
 Data File : VX047391.D
 Acq On : 18 Aug 2025 18:27
 Operator : JC/MD
 Sample : Q2815-16
 Misc : 5.0mL/MSVOA_X/WATER
 ALS Vial : 22 Sample Multiplier: 1

Instrument :
 MSVOA_X
 ClientSampleId :
 TW-17M-S

Quant Time: Aug 19 01:47:51 2025
 Quant Method : Z:\voasrv\HPCHEM1\MSVOA_X\Method\82X081525W.M
 Quant Title : SW846 8260
 QLast Update : Mon Aug 18 04:18:28 2025
 Response via : Initial Calibration

Compound	R.T.	QIon	Response	Conc	Units	Dev(Min)

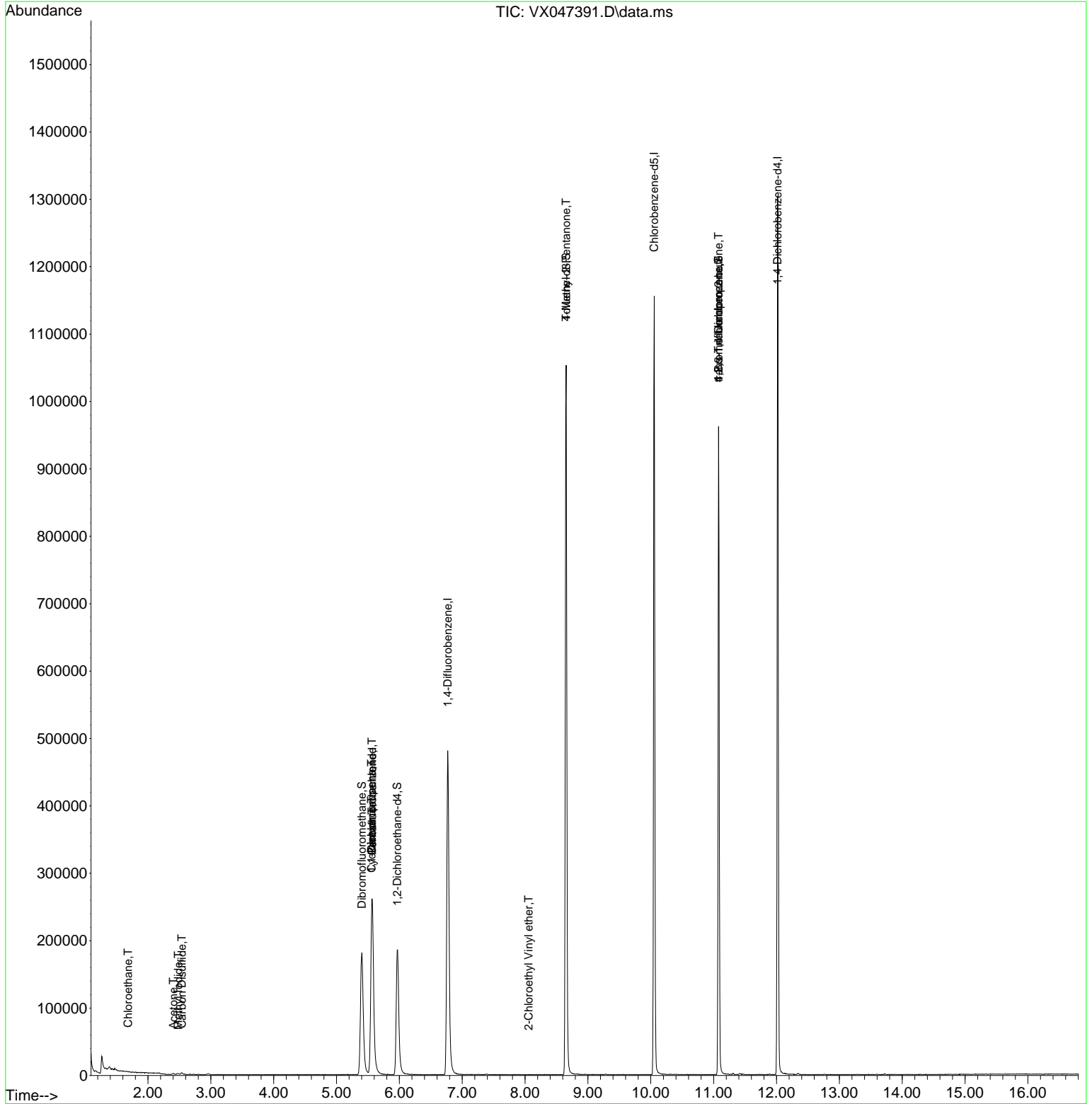
Internal Standards						
1) Pentafluorobenzene	5.568	168	266934	50.000	ug/l	0.00
34) 1,4-Difluorobenzene	6.769	114	513263	50.000	ug/l	0.00
63) Chlorobenzene-d5	10.055	117	504355	50.000	ug/l	0.00
72) 1,4-Dichlorobenzene-d4	12.018	152	253687	50.000	ug/l	0.00
System Monitoring Compounds						
33) 1,2-Dichloroethane-d4	5.964	65	198926	53.248	ug/l	0.00
Spiked Amount	50.000	Range 78 - 117	Recovery	=	106.500%	
35) Dibromofluoromethane	5.403	113	173468	52.075	ug/l	0.00
Spiked Amount	50.000	Range 75 - 124	Recovery	=	104.140%	
50) Toluene-d8	8.653	98	636171	53.431	ug/l	0.00
Spiked Amount	50.000	Range 92 - 112	Recovery	=	106.860%	
62) 4-Bromofluorobenzene	11.079	95	255538	58.161	ug/l	0.00
Spiked Amount	50.000	Range 83 - 123	Recovery	=	116.320%	
Target Compounds						
						Qvalue
6) Chloroethane	1.685	64	502	0.214	ug/l	91
10) Methyl Iodide	2.483	142	1936	0.343	ug/l #	86
16) Acetone	2.404	43	1802	1.283	ug/l	94
17) Carbon Disulfide	2.538	76	2814	0.277	ug/l	96
31) Cyclohexane	5.556	56	5923	0.985	ug/l #	5
36) 1,1-Dichloropropene	5.556	75	22618	4.301	ug/l #	51
38) Carbon Tetrachloride	5.562	117	28272	4.920	ug/l #	15
51) 4-Methyl-2-Pentanone	8.653	43	2769	0.614	ug/l #	1
58) 2-Chloroethyl Vinyl ether	8.055	63	45	8.372	ug/l #	46
76) 1,2,3-Trichloropropane	11.079	75	134565	28.921	ug/l #	38
81) trans-1,4-Dichloro-2-b...	11.079	75	134565	113.803	ug/l #	7

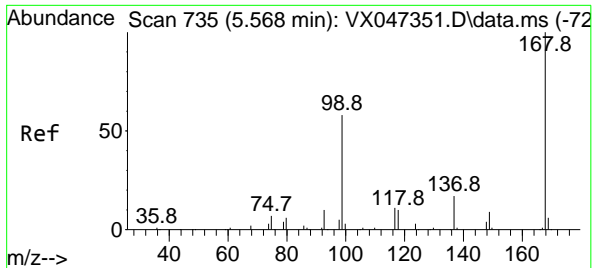
(#) = qualifier out of range (m) = manual integration (+) = signals summed

Data Path : Z:\voasrv\HPCHEM1\MSVOA_X\Data\VX081825\
 Data File : VX047391.D
 Acq On : 18 Aug 2025 18:27
 Operator : JC/MD
 Sample : Q2815-16
 Misc : 5.0mL/MSVOA_X/WATER
 ALS Vial : 22 Sample Multiplier: 1

Instrument :
 MSVOA_X
ClientSampleId :
 TW-17M-S

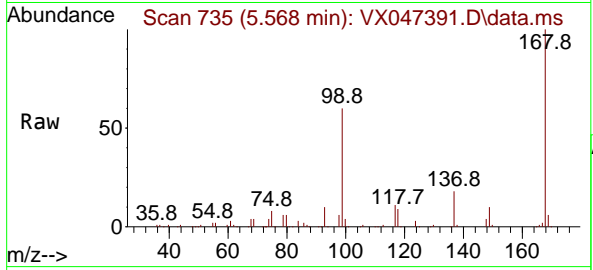
Quant Time: Aug 19 01:47:51 2025
 Quant Method : Z:\voasrv\HPCHEM1\MSVOA_X\Method\82X081525W.M
 Quant Title : SW846 8260
 QLast Update : Mon Aug 18 04:18:28 2025
 Response via : Initial Calibration



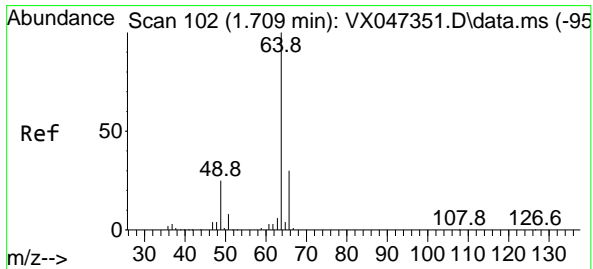
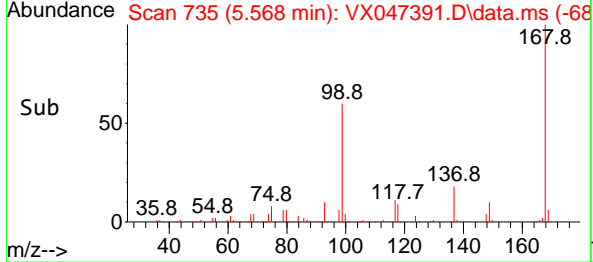
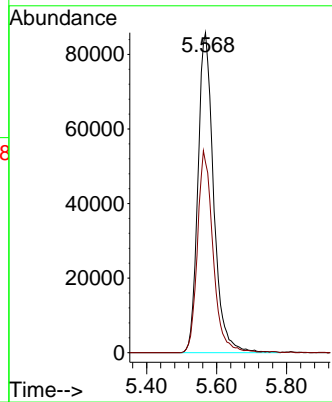


#1
 Pentafluorobenzene
 Concen: 50.000 ug/l
 RT: 5.568 min Scan# 71
 Delta R.T. 0.000 min
 Lab File: VX047391.D
 Acq: 18 Aug 2025 18:27

Instrument : MSVOA_X
 ClientSampleId : TW-17M-S

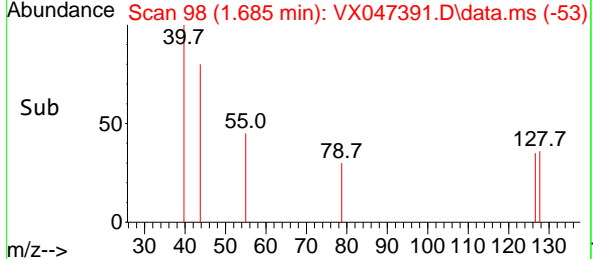
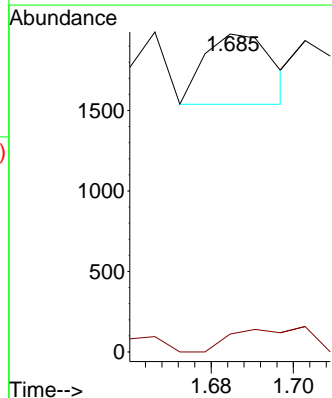
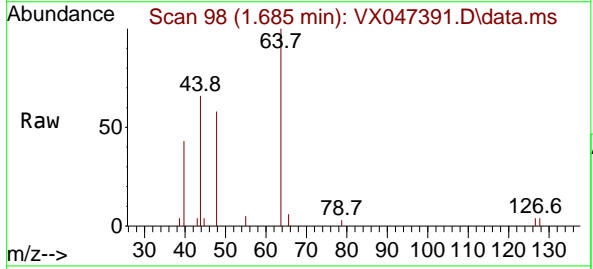


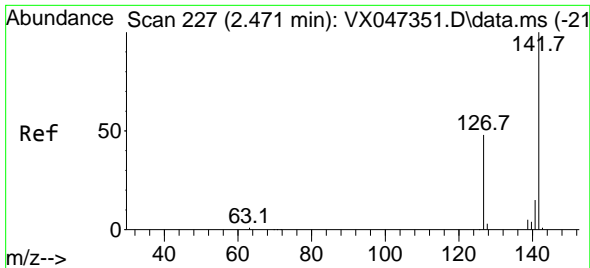
Tgt Ion:168 Resp: 266934
 Ion Ratio Lower Upper
 168 100
 99 59.5 47.9 71.9



#6
 Chloroethane
 Concen: 0.214 ug/l
 RT: 1.685 min Scan# 98
 Delta R.T. -0.024 min
 Lab File: VX047391.D
 Acq: 18 Aug 2025 18:27

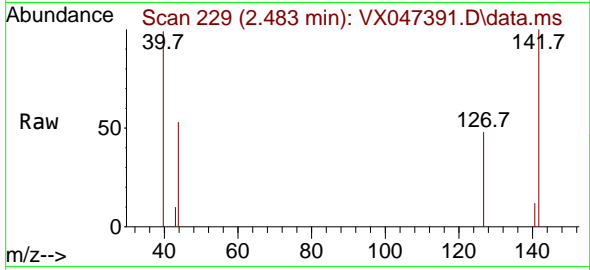
Tgt Ion: 64 Resp: 502
 Ion Ratio Lower Upper
 64 100
 66 25.5 24.4 36.6



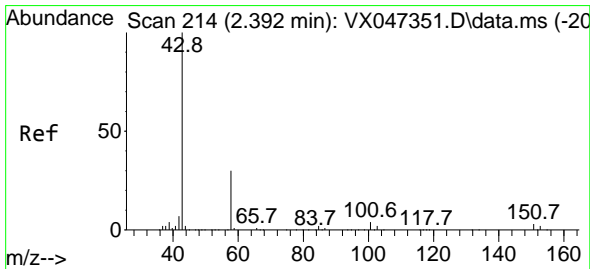
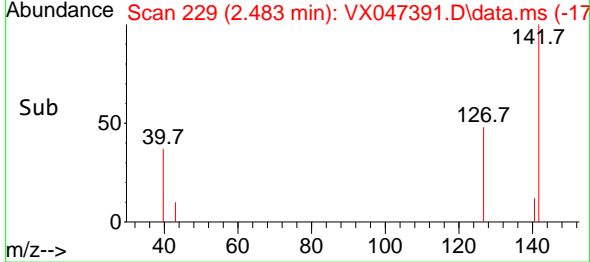
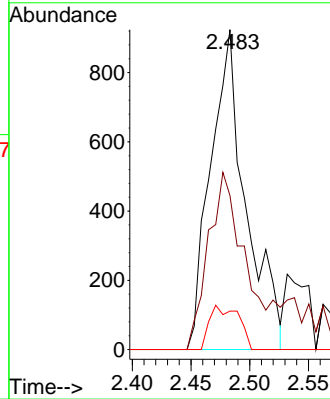


#10
Methyl Iodide
Concen: 0.343 ug/l
RT: 2.483 min Scan# 210
Delta R.T. 0.012 min
Lab File: VX047391.D
Acq: 18 Aug 2025 18:27

Instrument : MSVOA_X
ClientSampleId : TW-17M-S

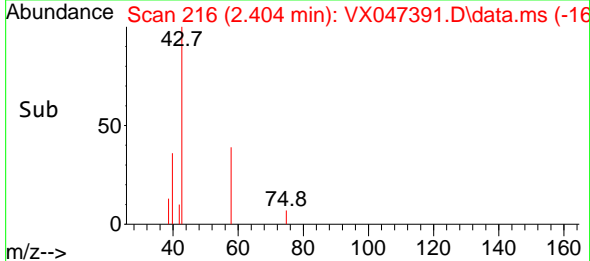
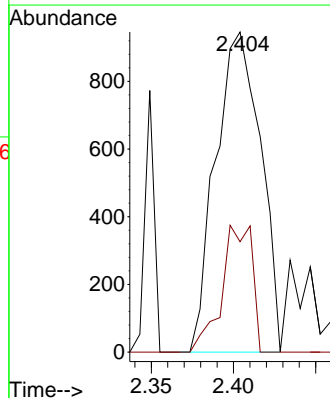
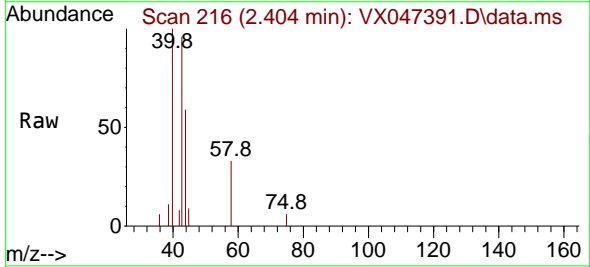


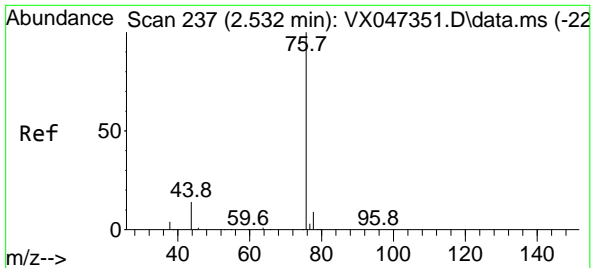
Tgt Ion:142 Resp: 1936
Ion Ratio Lower Upper
142 100
127 55.5 36.1 54.1#
141 11.3 11.1 16.7



#16
Acetone
Concen: 1.283 ug/l
RT: 2.404 min Scan# 216
Delta R.T. 0.012 min
Lab File: VX047391.D
Acq: 18 Aug 2025 18:27

Tgt Ion: 43 Resp: 1802
Ion Ratio Lower Upper
43 100
58 34.5 24.8 37.2

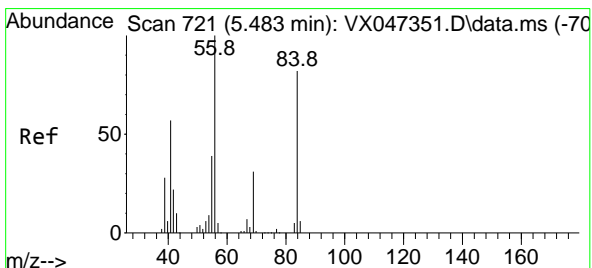
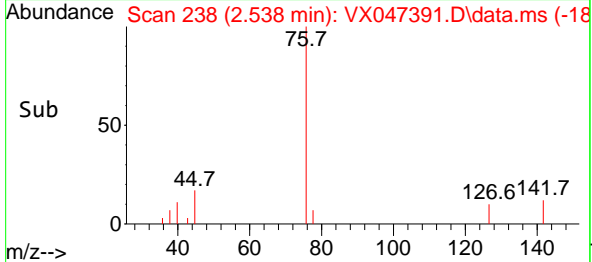
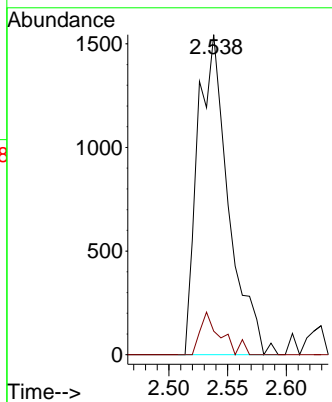
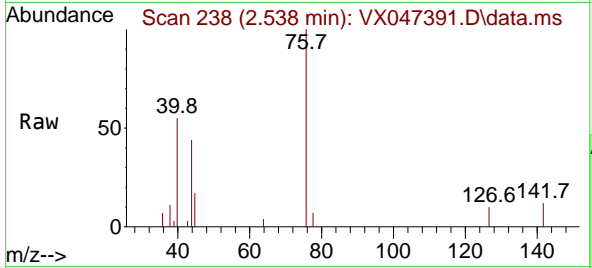




#17
 Carbon Disulfide
 Concen: 0.277 ug/l
 RT: 2.538 min Scan# 21
 Delta R.T. 0.006 min
 Lab File: VX047391.D
 Acq: 18 Aug 2025 18:27

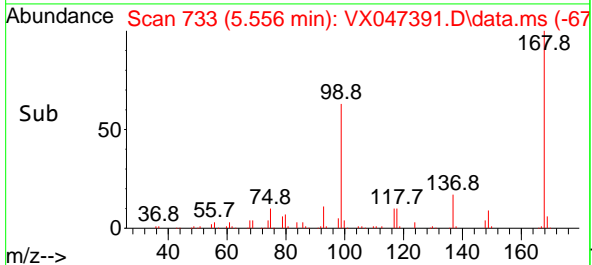
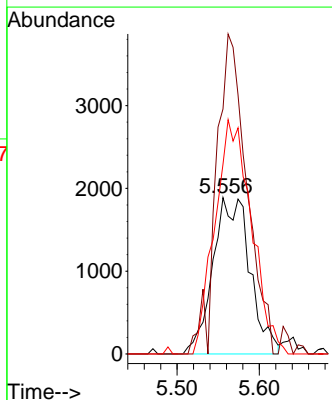
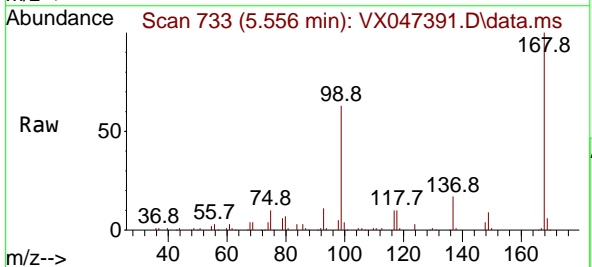
Instrument :
 MSVOA_X
 ClientSampleId :
 TW-17M-S

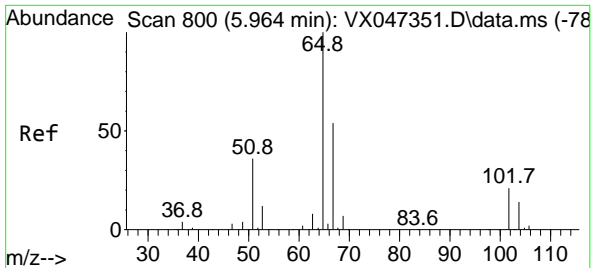
Tgt Ion: 76 Resp: 2814
 Ion Ratio Lower Upper
 76 100
 78 7.4 7.2 10.8



#31
 Cyclohexane
 Concen: 0.985 ug/l
 RT: 5.556 min Scan# 733
 Delta R.T. 0.073 min
 Lab File: VX047391.D
 Acq: 18 Aug 2025 18:27

Tgt Ion: 56 Resp: 5923
 Ion Ratio Lower Upper
 56 100
 69 156.6 24.3 36.5#
 84 121.3 65.3 97.9#

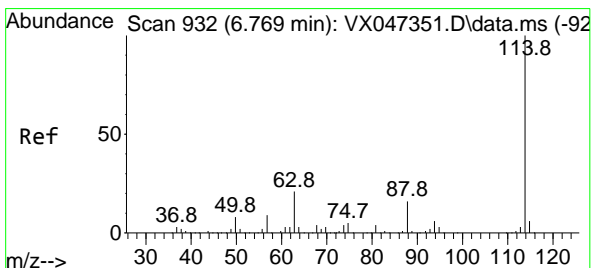
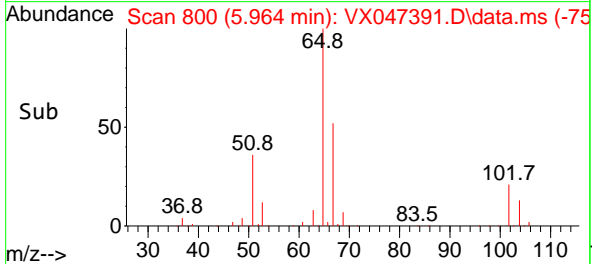
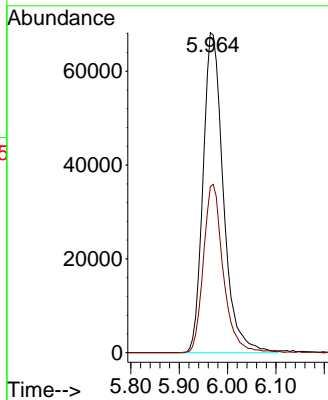
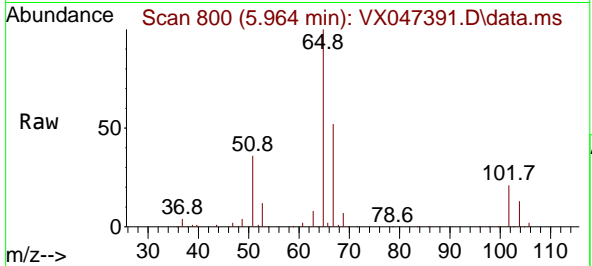




#33
 1,2-Dichloroethane-d4
 Concen: 53.248 ug/l
 RT: 5.964 min Scan# 800
 Delta R.T. 0.000 min
 Lab File: VX047391.D
 Acq: 18 Aug 2025 18:27

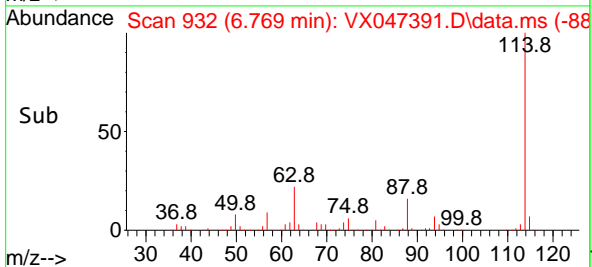
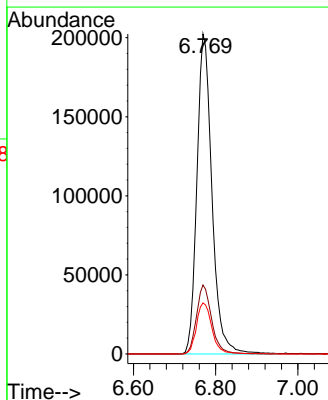
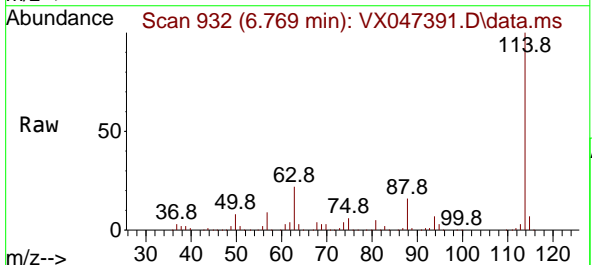
Instrument :
 MSVOA_X
 ClientSampleId :
 TW-17M-S

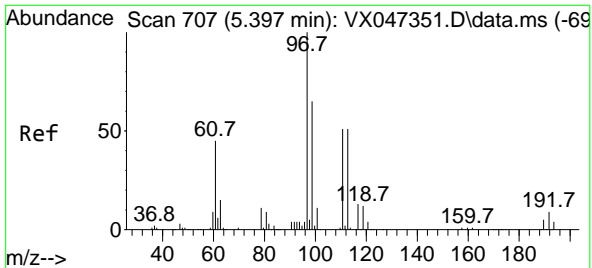
Tgt Ion: 65 Resp: 198926
 Ion Ratio Lower Upper
 65 100
 67 51.5 0.0 106.0



#34
 1,4-Difluorobenzene
 Concen: 50.000 ug/l
 RT: 6.769 min Scan# 932
 Delta R.T. 0.000 min
 Lab File: VX047391.D
 Acq: 18 Aug 2025 18:27

Tgt Ion: 114 Resp: 513263
 Ion Ratio Lower Upper
 114 100
 63 21.6 0.0 42.4
 88 16.0 0.0 33.0



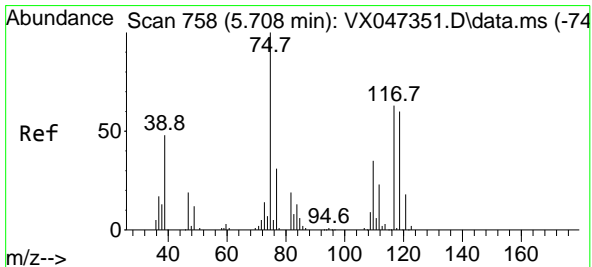
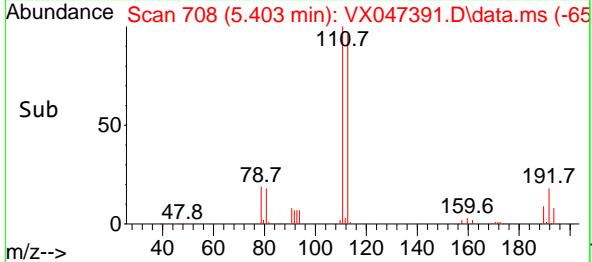
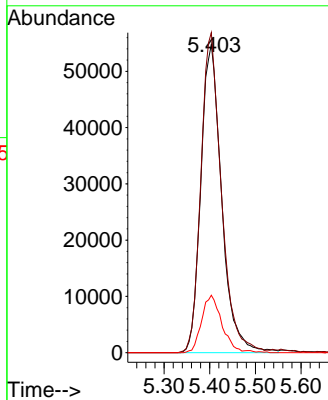
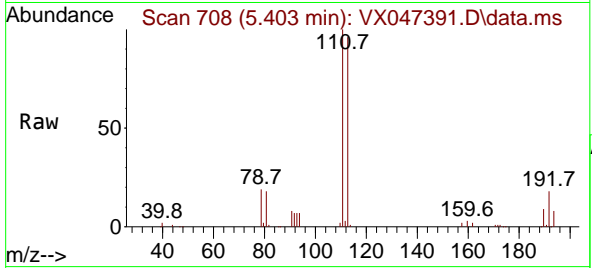


#35
 Dibromofluoromethane
 Concen: 52.075 ug/l
 RT: 5.403 min Scan# 707
 Delta R.T. 0.006 min
 Lab File: VX047391.D
 Acq: 18 Aug 2025 18:27

Instrument : MSVOA_X
 ClientSampleId : TW-17M-S

Tgt Ion:113 Resp: 173468

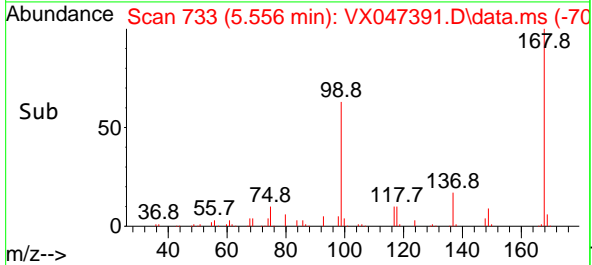
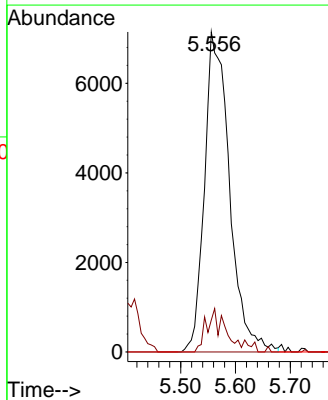
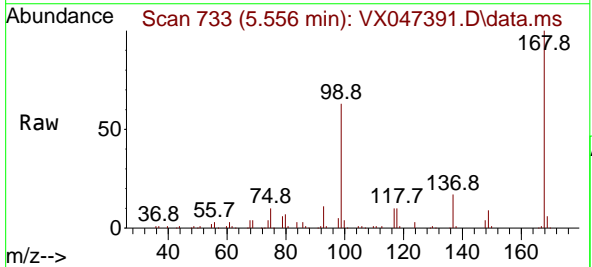
Ion	Ratio	Lower	Upper
113	100		
111	102.2	81.4	122.2
192	18.0	14.1	21.1

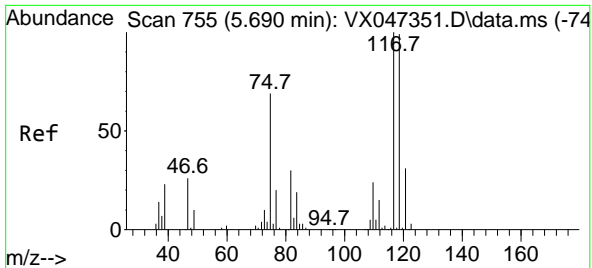


#36
 1,1-Dichloropropene
 Concen: 4.301 ug/l
 RT: 5.556 min Scan# 733
 Delta R.T. -0.152 min
 Lab File: VX047391.D
 Acq: 18 Aug 2025 18:27

Tgt Ion: 75 Resp: 22618

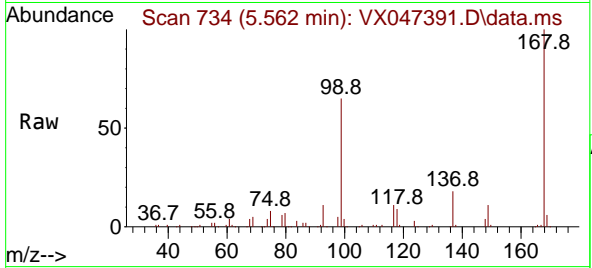
Ion	Ratio	Lower	Upper
75	100		
110	9.9	17.4	52.2#
77	0.0	24.4	36.6#



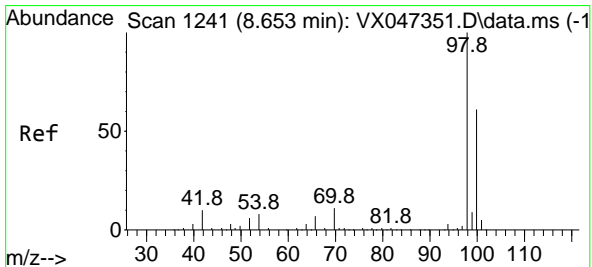
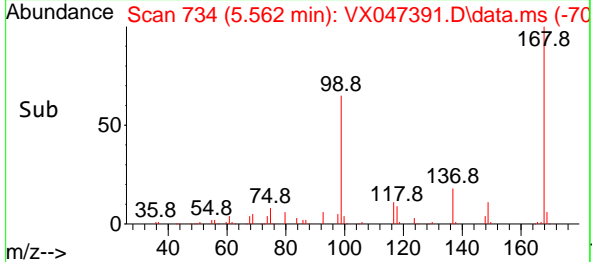
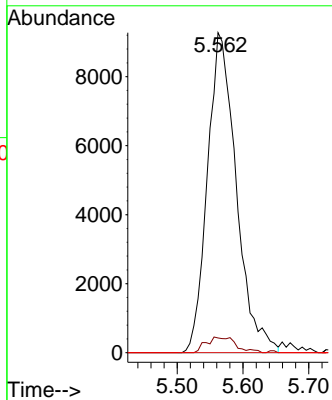


#38
 Carbon Tetrachloride
 Concen: 4.920 ug/l
 RT: 5.562 min Scan# 711
 Delta R.T. -0.128 min
 Lab File: VX047391.D
 Acq: 18 Aug 2025 18:27

Instrument : MSVOA_X
 ClientSampleId : TW-17M-S

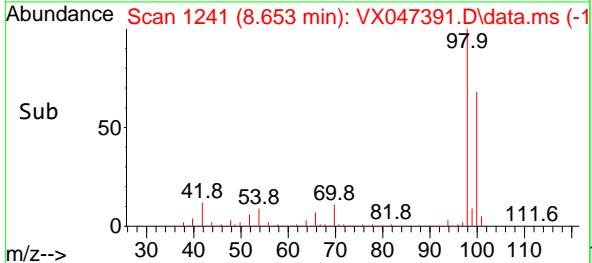
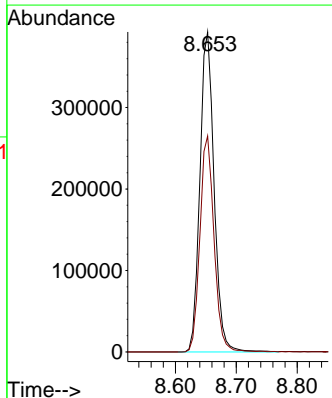
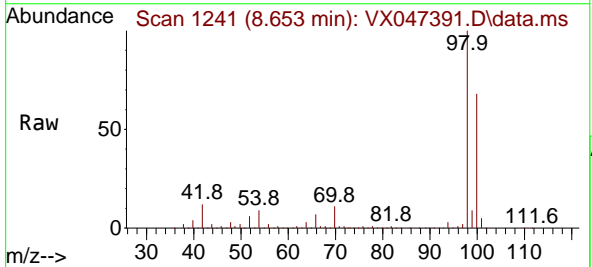


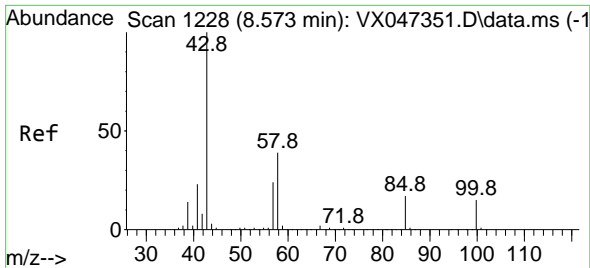
Tgt Ion:117 Resp: 28272
 Ion Ratio Lower Upper
 117 100
 119 4.6 78.5 117.7#
 121 0.0 24.7 37.1#



#50
 Toluene-d8
 Concen: 53.431 ug/l
 RT: 8.653 min Scan# 1241
 Delta R.T. 0.000 min
 Lab File: VX047391.D
 Acq: 18 Aug 2025 18:27

Tgt Ion: 98 Resp: 636171
 Ion Ratio Lower Upper
 98 100
 100 67.3 53.9 80.9

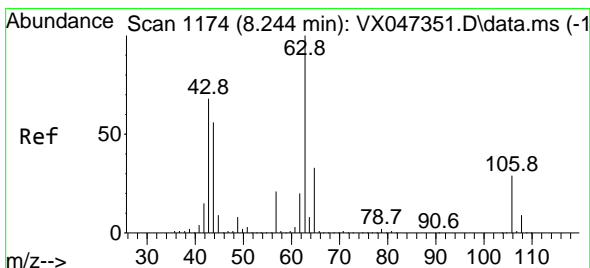
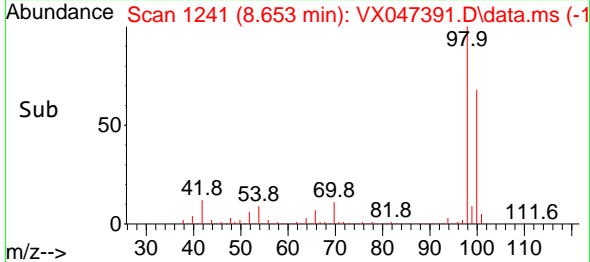
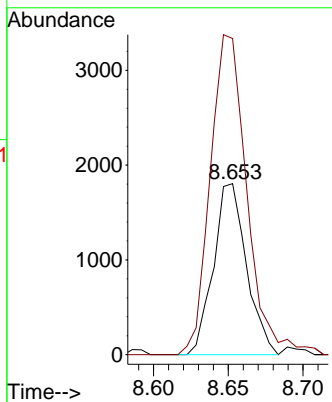
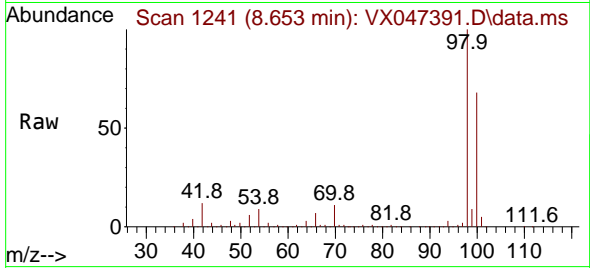




#51
 4-Methyl-2-Pentanone
 Concen: 0.614 ug/l
 RT: 8.653 min Scan# 1143
 Delta R.T. 0.079 min
 Lab File: VX047391.D
 Acq: 18 Aug 2025 18:27

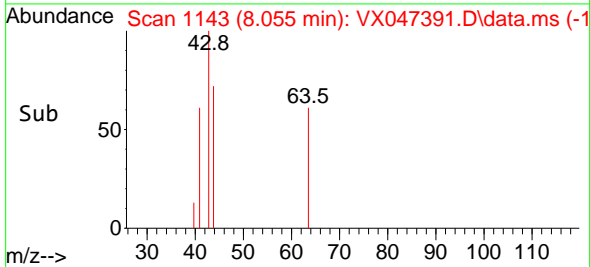
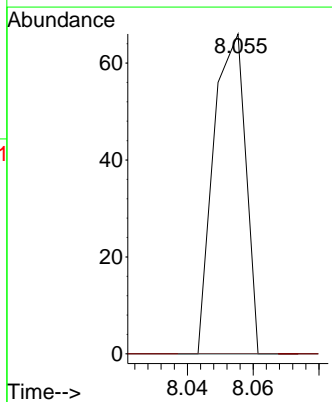
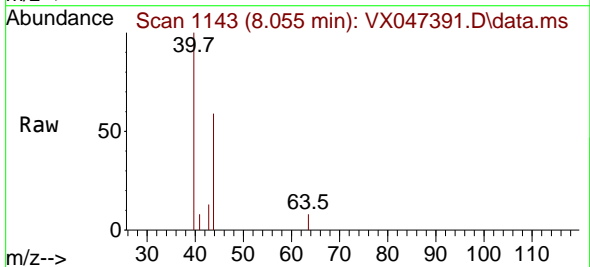
Instrument :
 MSVOA_X
 ClientSampleId :
 TW-17M-S

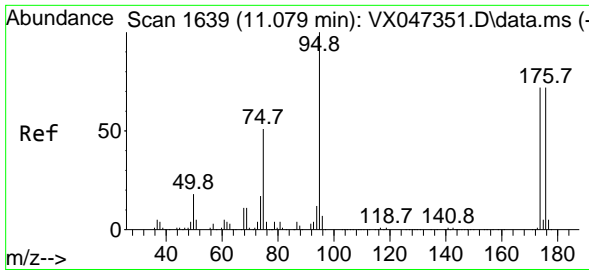
Tgt Ion: 43 Resp: 2769
 Ion Ratio Lower Upper
 43 100
 58 208.1 31.2 46.8#



#58
 2-Chloroethyl Vinyl ether
 Concen: 8.372 ug/l
 RT: 8.055 min Scan# 1143
 Delta R.T. -0.189 min
 Lab File: VX047391.D
 Acq: 18 Aug 2025 18:27

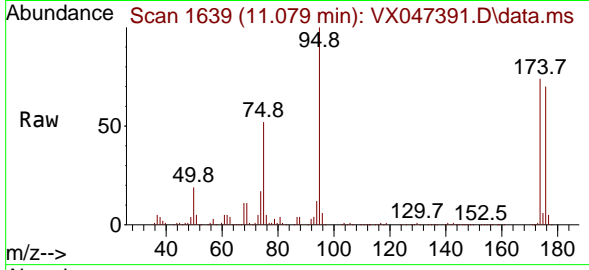
Tgt Ion: 63 Resp: 45
 Ion Ratio Lower Upper
 63 100
 106 0.0 22.8 34.2#



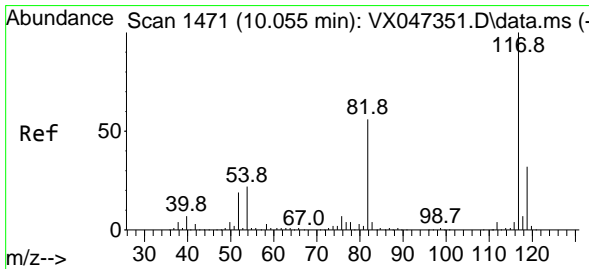
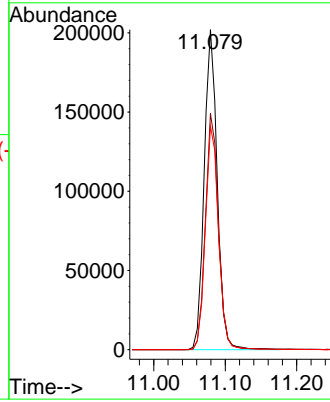
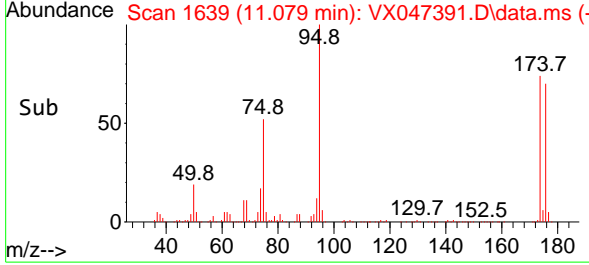


#62
 4-Bromofluorobenzene
 Concen: 58.161 ug/l
 RT: 11.079 min Scan# 1639
 Delta R.T. 0.000 min
 Lab File: VX047391.D
 Acq: 18 Aug 2025 18:27

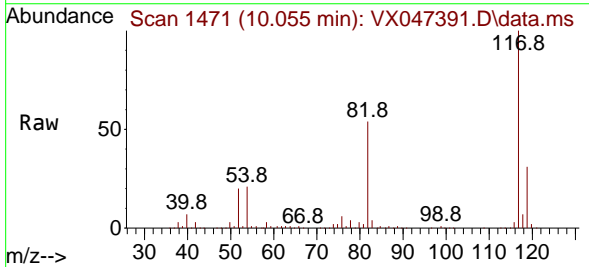
Instrument : MSVOA_X
 ClientSampleId : TW-17M-S



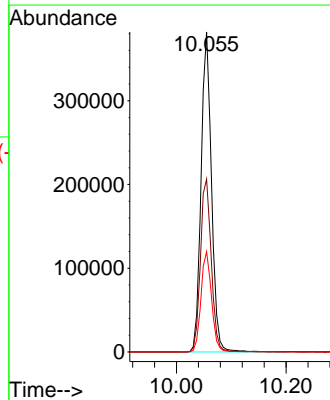
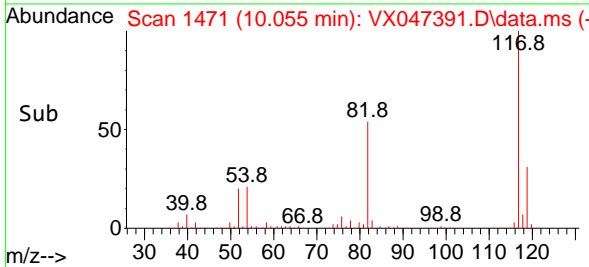
Tgt Ion: 95 Resp: 255538
 Ion Ratio Lower Upper
 95 100
 174 74.1 0.0 148.0
 176 70.8 0.0 145.4

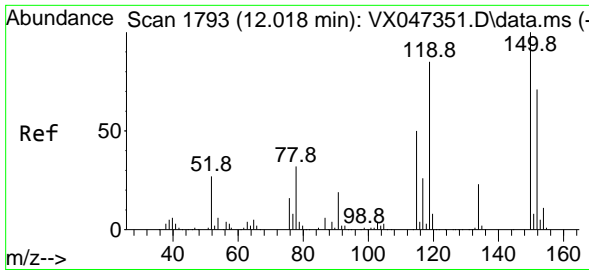


#63
 Chlorobenzene-d5
 Concen: 50.000 ug/l
 RT: 10.055 min Scan# 1471
 Delta R.T. 0.000 min
 Lab File: VX047391.D
 Acq: 18 Aug 2025 18:27



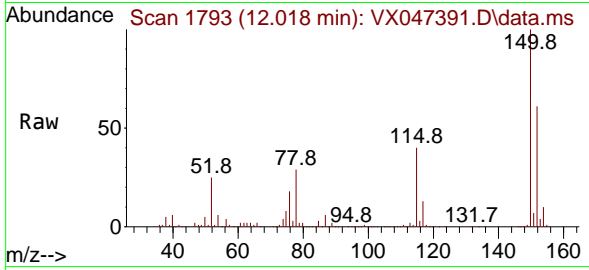
Tgt Ion: 117 Resp: 504355
 Ion Ratio Lower Upper
 117 100
 82 54.0 45.0 67.4
 119 31.4 25.8 38.8



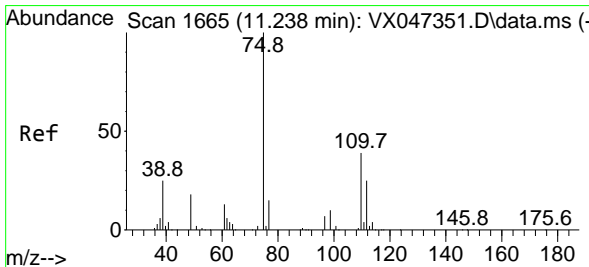
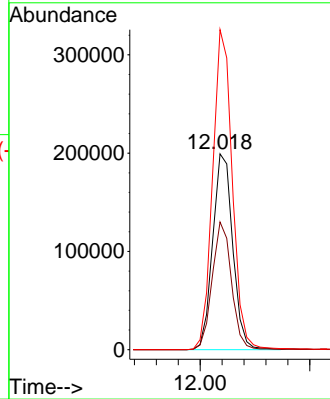
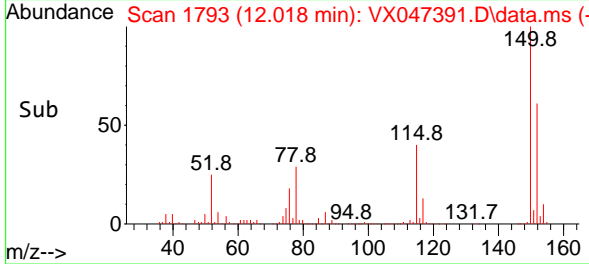


#72
 1,4-Dichlorobenzene-d4
 Concen: 50.000 ug/l
 RT: 12.018 min Scan# 1
 Delta R.T. 0.000 min
 Lab File: VX047391.D
 Acq: 18 Aug 2025 18:27

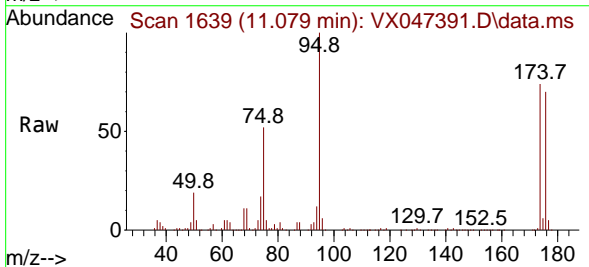
Instrument :
 MSVOA_X
 ClientSampleId :
 TW-17M-S



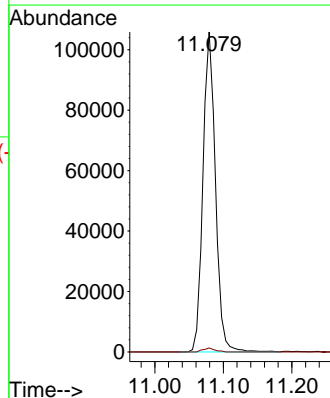
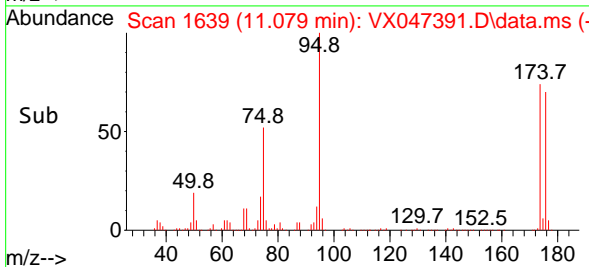
Tgt Ion:152 Resp: 253687
 Ion Ratio Lower Upper
 152 100
 115 62.8 44.6 133.8
 150 160.0 0.0 349.8

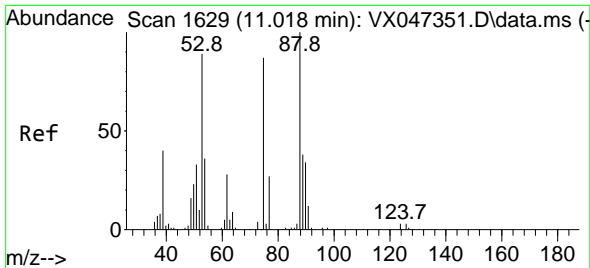


#76
 1,2,3-Trichloropropane
 Concen: 28.921 ug/l
 RT: 11.079 min Scan# 1639
 Delta R.T. -0.158 min
 Lab File: VX047391.D
 Acq: 18 Aug 2025 18:27



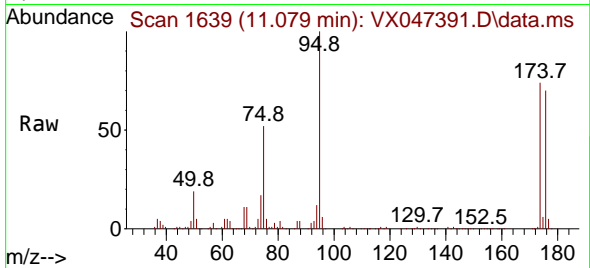
Tgt Ion: 75 Resp: 134565
 Ion Ratio Lower Upper
 75 100
 77 1.1 19.4 58.2#





#81
 trans-1,4-Dichloro-2-butene
 Concen: 113.803 ug/l
 RT: 11.079 min Scan# 1
 Delta R.T. 0.061 min
 Lab File: VX047391.D
 Acq: 18 Aug 2025 18:27

Instrument :
 MSVOA_X
 ClientSampleId :
 TW-17M-S



Tgt Ion: 75 Resp: 134565

Ion	Ratio	Lower	Upper
75	100		
53	0.0	85.2	127.8#
89	0.0	36.7	55.1#

