

Data Path : Z:\voasrv\HPCHEM1\MSVOA\_X\Data\VX081825\  
 Data File : VX047392.D  
 Acq On : 18 Aug 2025 18:48  
 Operator : JC/MD  
 Sample : Q2815-17  
 Misc : 5.0mL/MSVOA\_X/WATER  
 ALS Vial : 23 Sample Multiplier: 1

Instrument :  
 MSVOA\_X  
 ClientSampleId :  
 TW-84SB-S

Quant Time: Aug 19 01:48:14 2025  
 Quant Method : Z:\voasrv\HPCHEM1\MSVOA\_X\Method\82X081525W.M  
 Quant Title : SW846 8260  
 QLast Update : Mon Aug 18 04:18:28 2025  
 Response via : Initial Calibration

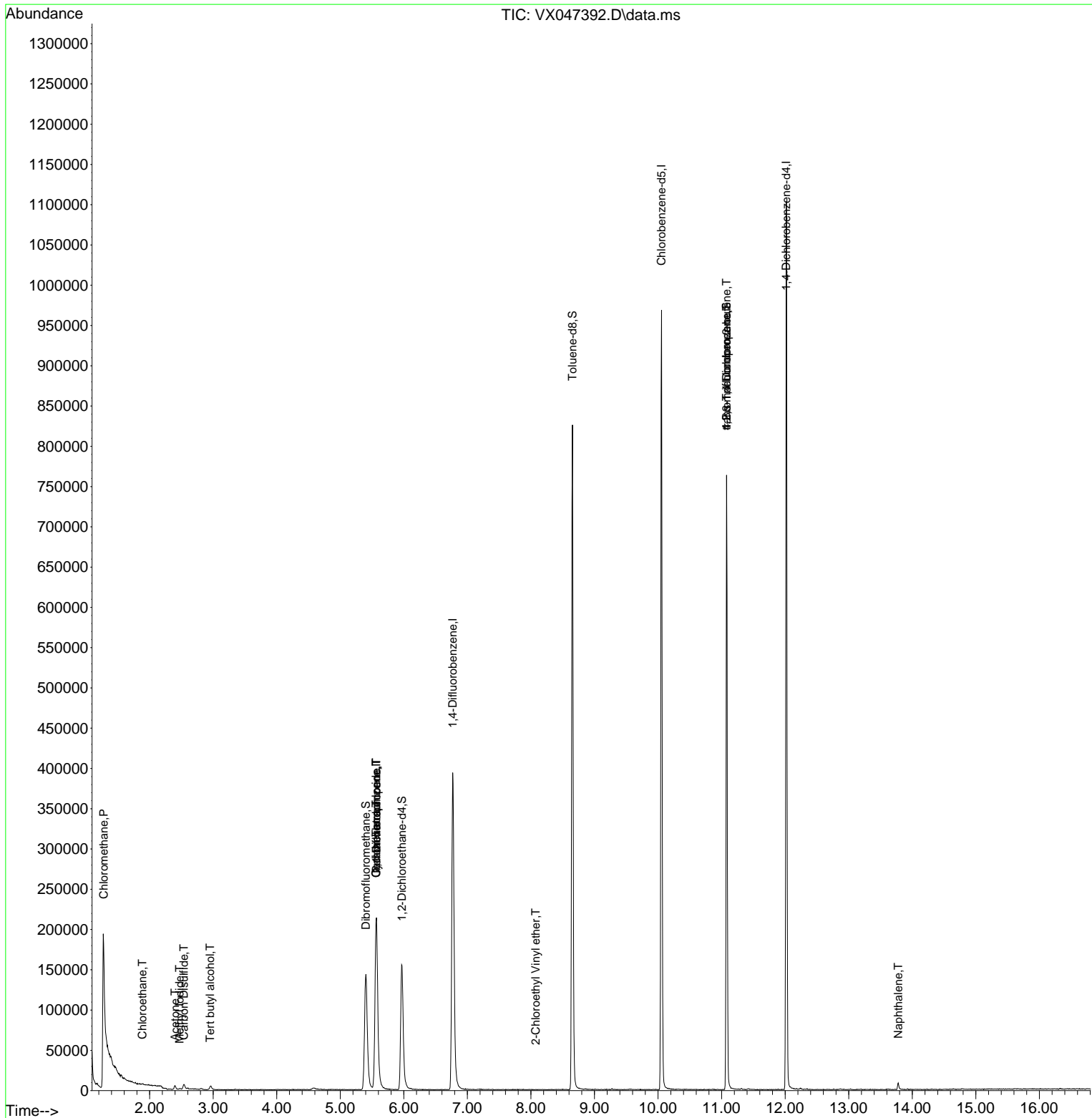
Compound	R.T.	QIon	Response	Conc	Units	Dev(Min)
-----						
Internal Standards						
1) Pentafluorobenzene	5.568	168	215102	50.000	ug/l	0.00
34) 1,4-Difluorobenzene	6.769	114	425527	50.000	ug/l	0.00
63) Chlorobenzene-d5	10.055	117	427339	50.000	ug/l	0.00
72) 1,4-Dichlorobenzene-d4	12.018	152	220943	50.000	ug/l	0.00
System Monitoring Compounds						
33) 1,2-Dichloroethane-d4	5.970	65	165827	55.084	ug/l	0.00
Spiked Amount	50.000	Range 78 - 117	Recovery	=	110.160%	
35) Dibromofluoromethane	5.403	113	136245	49.334	ug/l	0.00
Spiked Amount	50.000	Range 75 - 124	Recovery	=	98.660%	
50) Toluene-d8	8.653	98	486424	49.278	ug/l	0.00
Spiked Amount	50.000	Range 92 - 112	Recovery	=	98.560%	
62) 4-Bromofluorobenzene	11.079	95	200744	55.110	ug/l	0.00
Spiked Amount	50.000	Range 83 - 123	Recovery	=	110.220%	
Target Compounds						
					Qvalue	
3) Chloromethane	1.276	50	8630	3.499	ug/l #	41
6) Chloroethane	1.886	64	2201	1.162	ug/l #	58
10) Methyl Iodide	2.471	142	1680	0.369	ug/l	94
11) Tert butyl alcohol	2.953	59	2442	9.325	ug/l #	75
16) Acetone	2.398	43	6384	5.642	ug/l #	78
17) Carbon Disulfide	2.538	76	4948	0.605	ug/l #	91
31) Cyclohexane	5.562	56	5172	1.068	ug/l #	3
36) 1,1-Dichloropropene	5.568	75	17451	4.003	ug/l #	50
38) Carbon Tetrachloride	5.562	117	22181	4.656	ug/l #	16
58) 2-Chloroethyl Vinyl ether	8.074	63	38	8.372	ug/l #	46
76) 1,2,3-Trichloropropane	11.079	75	105181	25.956	ug/l #	38
81) trans-1,4-Dichloro-2-b...	11.079	75	105181	102.942	ug/l #	7
95) Naphthalene	13.780	128	6717	0.458	ug/l	97

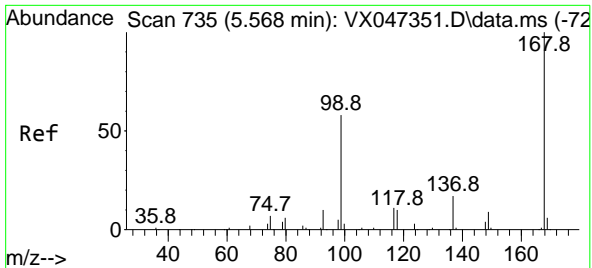
(#) = qualifier out of range (m) = manual integration (+) = signals summed

Data Path : Z:\voasrv\HPCHEM1\MSVOA\_X\Data\VX081825\  
 Data File : VX047392.D  
 Acq On : 18 Aug 2025 18:48  
 Operator : JC/MD  
 Sample : Q2815-17  
 Misc : 5.0mL/MSVOA\_X/WATER  
 ALS Vial : 23 Sample Multiplier: 1

Instrument :  
 MSVOA\_X  
 ClientSampleId :  
 TW-84SB-S

Quant Time: Aug 19 01:48:14 2025  
 Quant Method : Z:\voasrv\HPCHEM1\MSVOA\_X\Method\82X081525W.M  
 Quant Title : SW846 8260  
 QLast Update : Mon Aug 18 04:18:28 2025  
 Response via : Initial Calibration

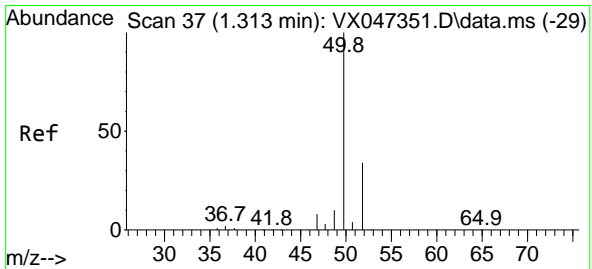
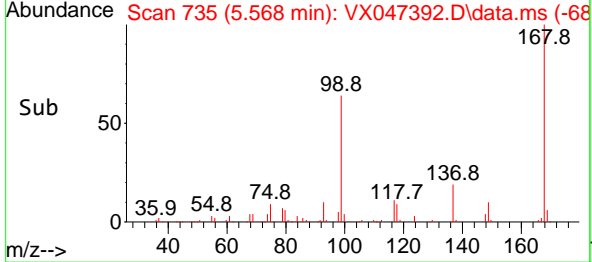
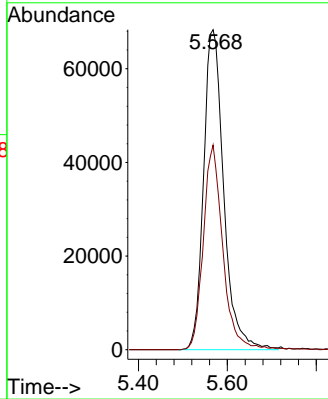
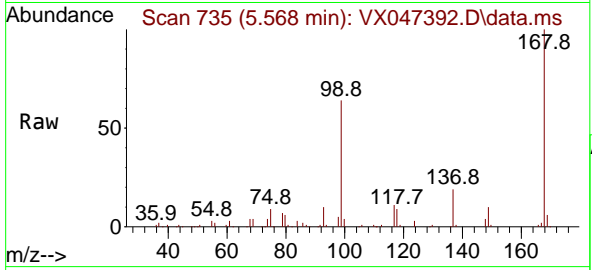




#1  
 Pentafluorobenzene  
 Concen: 50.000 ug/l  
 RT: 5.568 min Scan# 71  
 Delta R.T. -0.000 min  
 Lab File: VX047392.D  
 Acq: 18 Aug 2025 18:48

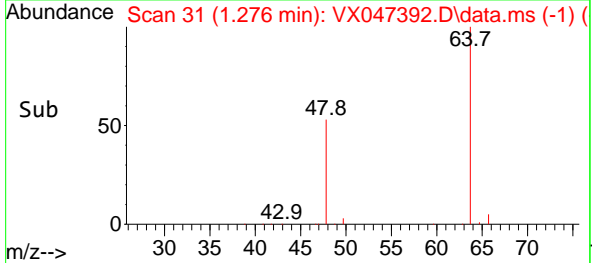
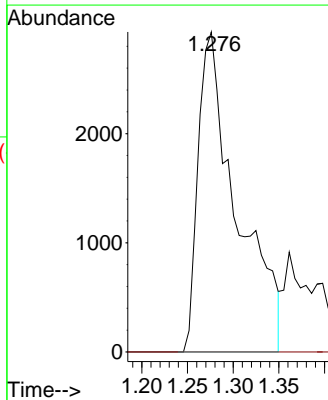
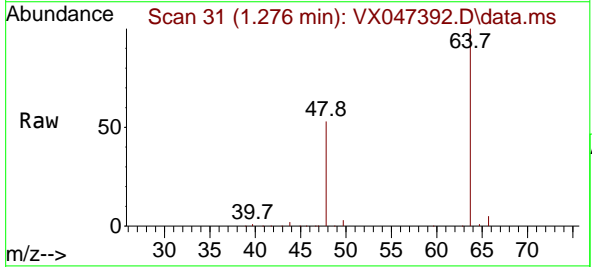
Instrument : MSVOA\_X  
 ClientSampleId : TW-84SB-S

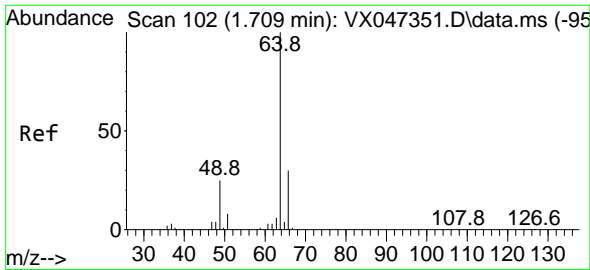
Tgt Ion:168 Resp: 215102  
 Ion Ratio Lower Upper  
 168 100  
 99 64.0 47.9 71.9



#3  
 Chloromethane  
 Concen: 3.499 ug/l  
 RT: 1.276 min Scan# 31  
 Delta R.T. -0.037 min  
 Lab File: VX047392.D  
 Acq: 18 Aug 2025 18:48

Tgt Ion: 50 Resp: 8630  
 Ion Ratio Lower Upper  
 50 100  
 52 0.0 27.0 40.4#

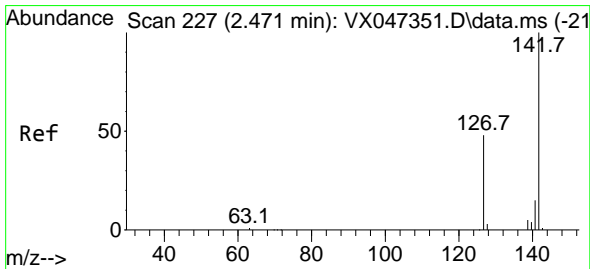
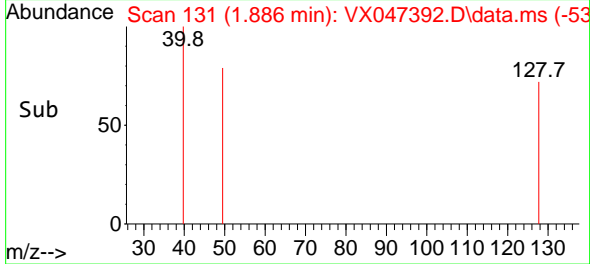
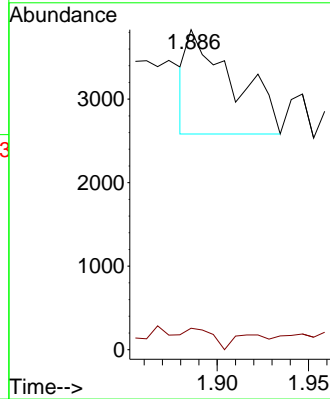
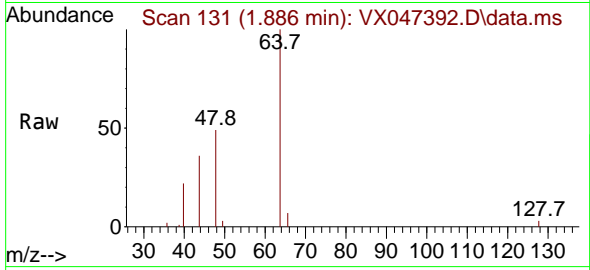




#6  
 Chloroethane  
 Concen: 1.162 ug/l  
 RT: 1.886 min Scan# 11  
 Delta R.T. 0.177 min  
 Lab File: VX047392.D  
 Acq: 18 Aug 2025 18:48

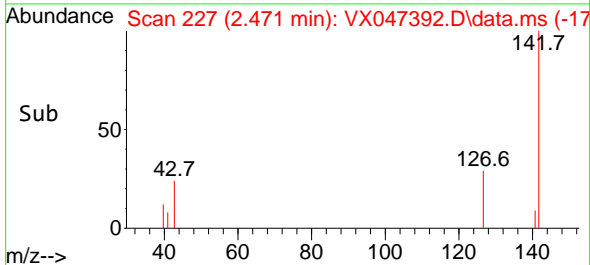
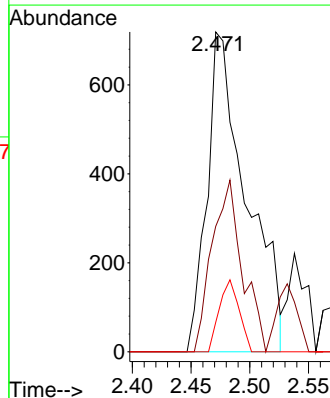
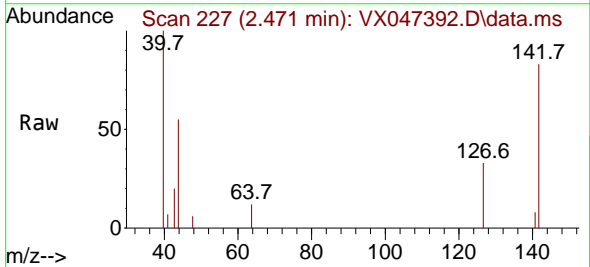
Instrument :  
 MSVOA\_X  
 ClientSampleId :  
 TW-84SB-S

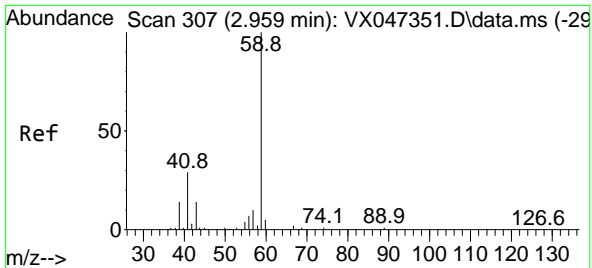
Tgt Ion: 64 Resp: 2201  
 Ion Ratio Lower Upper  
 64 100  
 66 7.4 24.4 36.6#



#10  
 Methyl Iodide  
 Concen: 0.369 ug/l  
 RT: 2.471 min Scan# 227  
 Delta R.T. 0.000 min  
 Lab File: VX047392.D  
 Acq: 18 Aug 2025 18:48

Tgt Ion:142 Resp: 1680  
 Ion Ratio Lower Upper  
 142 100  
 127 41.3 36.1 54.1  
 141 11.3 11.1 16.7

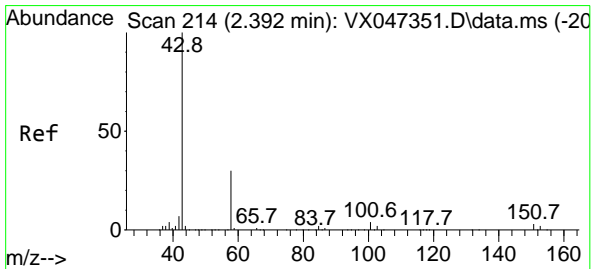
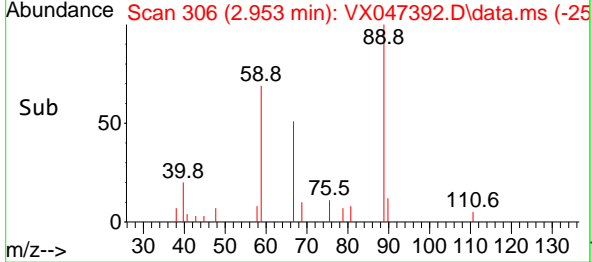
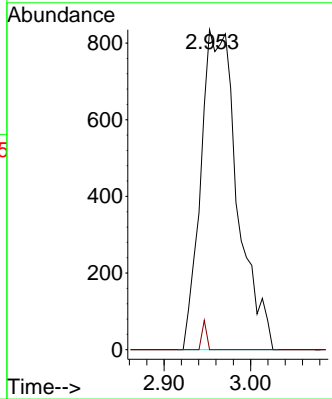
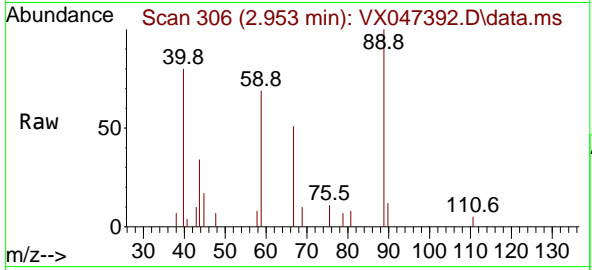




#11  
 Tert butyl alcohol  
 Concen: 9.325 ug/l  
 RT: 2.953 min Scan# 30  
 Delta R.T. -0.006 min  
 Lab File: VX047392.D  
 Acq: 18 Aug 2025 18:48

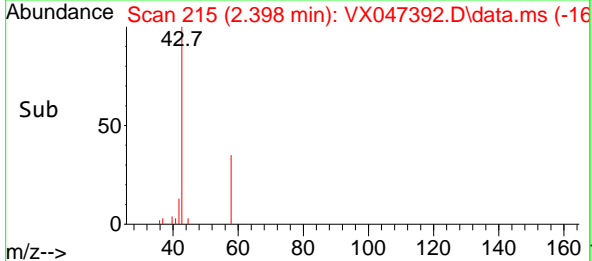
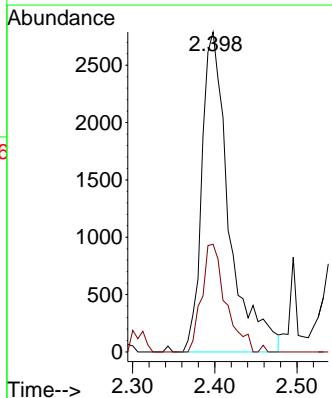
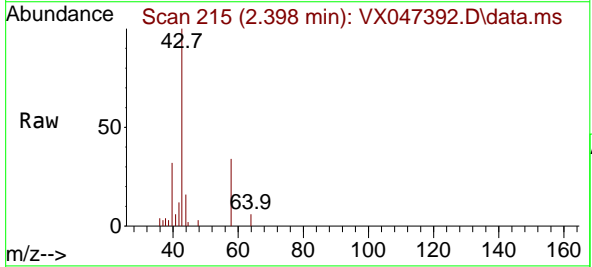
Instrument : MSVOA\_X  
 ClientSampleId : TW-84SB-S

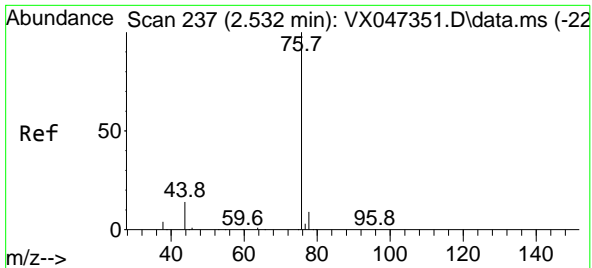
Tgt Ion: 59 Resp: 2442  
 Ion Ratio Lower Upper  
 59 100  
 57 1.1 8.3 12.5#



#16  
 Acetone  
 Concen: 5.642 ug/l  
 RT: 2.398 min Scan# 215  
 Delta R.T. 0.006 min  
 Lab File: VX047392.D  
 Acq: 18 Aug 2025 18:48

Tgt Ion: 43 Resp: 6384  
 Ion Ratio Lower Upper  
 43 100  
 58 42.8 24.8 37.2#

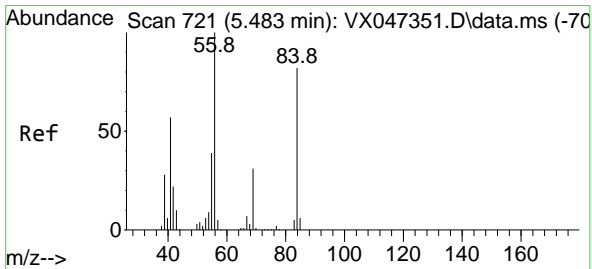
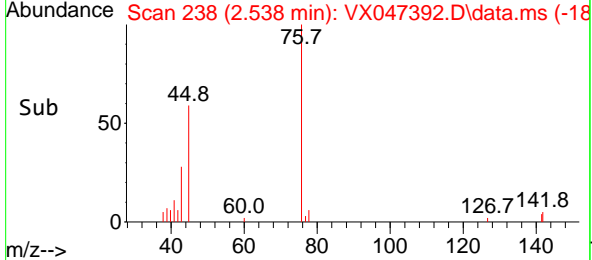
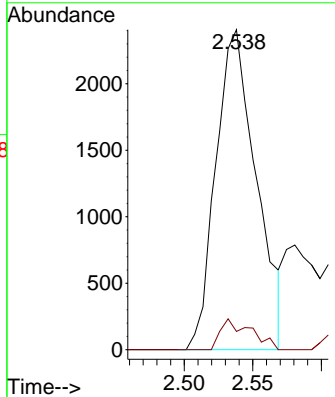
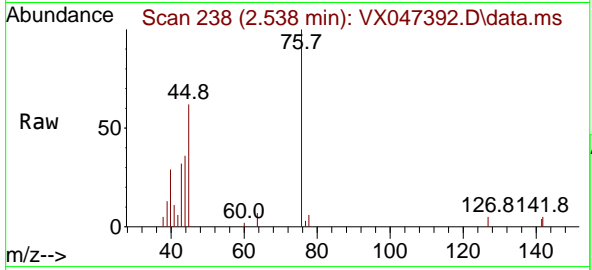




#17  
 Carbon Disulfide  
 Concen: 0.605 ug/l  
 RT: 2.538 min Scan# 21  
 Delta R.T. 0.006 min  
 Lab File: VX047392.D  
 Acq: 18 Aug 2025 18:48

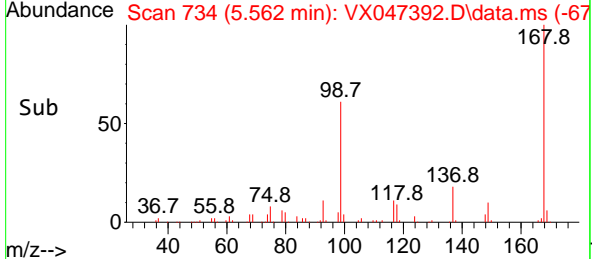
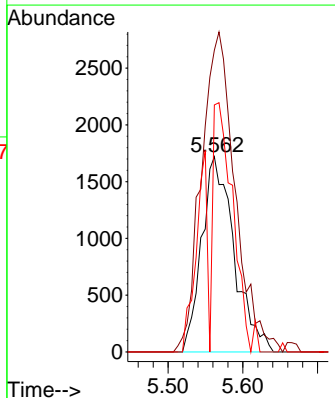
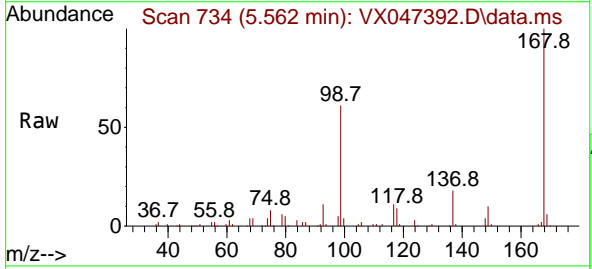
Instrument : MSVOA\_X  
 ClientSampleId : TW-84SB-S

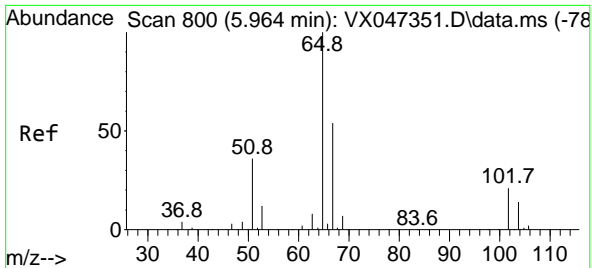
Tgt Ion: 76 Resp: 4948  
 Ion Ratio Lower Upper  
 76 100  
 78 5.7 7.2 10.8#



#31  
 Cyclohexane  
 Concen: 1.068 ug/l  
 RT: 5.562 min Scan# 734  
 Delta R.T. 0.079 min  
 Lab File: VX047392.D  
 Acq: 18 Aug 2025 18:48

Tgt Ion: 56 Resp: 5172  
 Ion Ratio Lower Upper  
 56 100  
 69 151.6 24.3 36.5#  
 84 126.6 65.3 97.9#

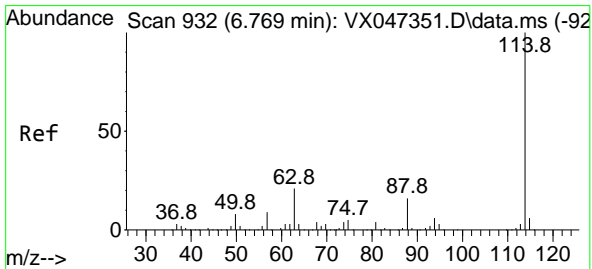
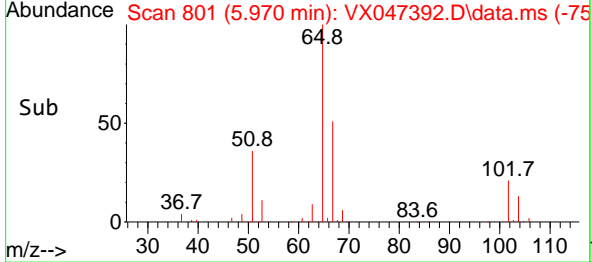
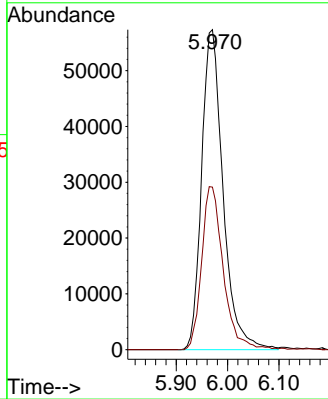
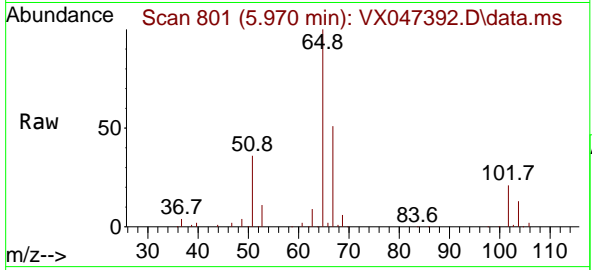




#33  
 1,2-Dichloroethane-d4  
 Concen: 55.084 ug/l  
 RT: 5.970 min Scan# 801  
 Delta R.T. 0.006 min  
 Lab File: VX047392.D  
 Acq: 18 Aug 2025 18:48

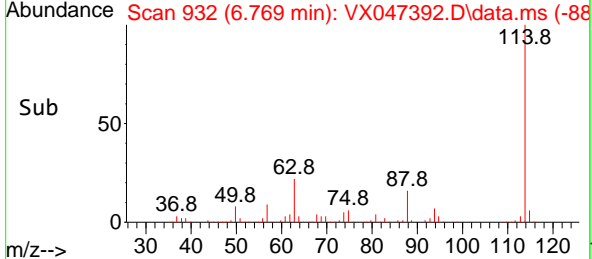
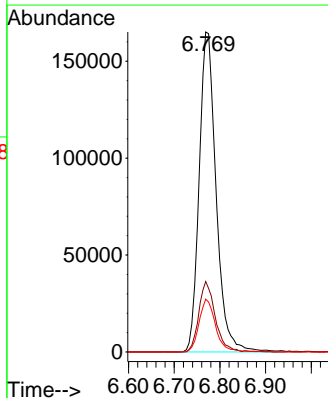
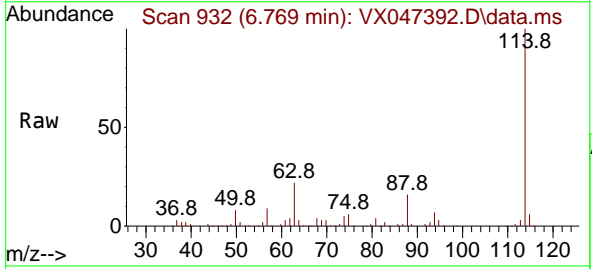
Instrument : MSVOA\_X  
 ClientSampleId : TW-84SB-S

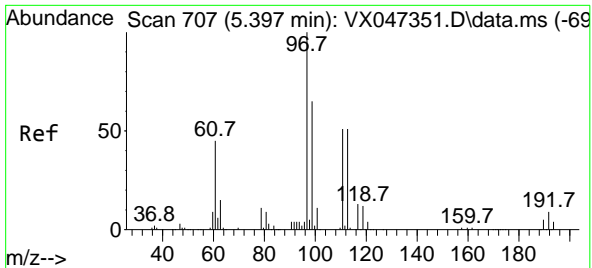
Tgt Ion: 65 Resp: 165827  
 Ion Ratio Lower Upper  
 65 100  
 67 51.6 0.0 106.0



#34  
 1,4-Difluorobenzene  
 Concen: 50.000 ug/l  
 RT: 6.769 min Scan# 932  
 Delta R.T. 0.000 min  
 Lab File: VX047392.D  
 Acq: 18 Aug 2025 18:48

Tgt Ion: 114 Resp: 425527  
 Ion Ratio Lower Upper  
 114 100  
 63 22.0 0.0 42.4  
 88 16.5 0.0 33.0



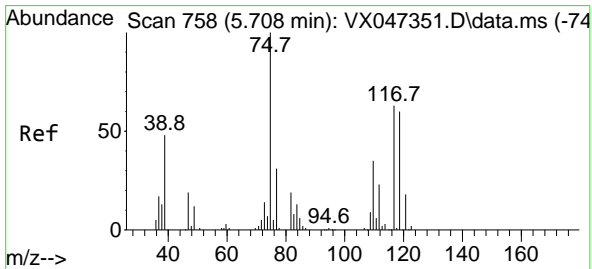
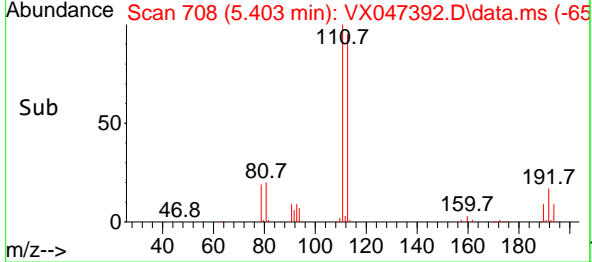
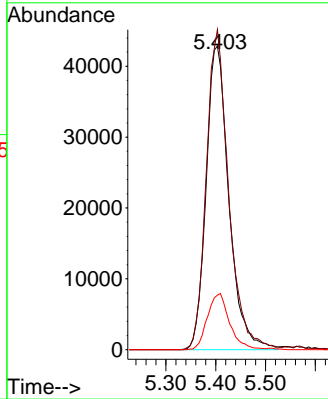
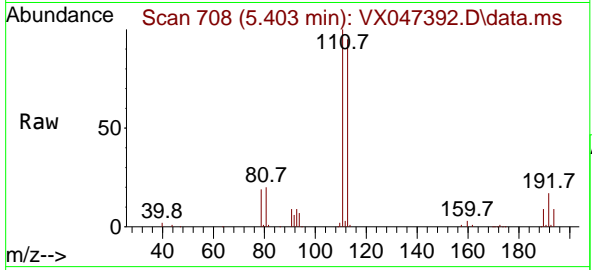


#35  
 Dibromofluoromethane  
 Concen: 49.334 ug/l  
 RT: 5.403 min Scan# 707  
 Delta R.T. 0.006 min  
 Lab File: VX047392.D  
 Acq: 18 Aug 2025 18:48

Instrument : MSVOA\_X  
 ClientSampleId : TW-84SB-S

Tgt Ion:113 Resp: 136245

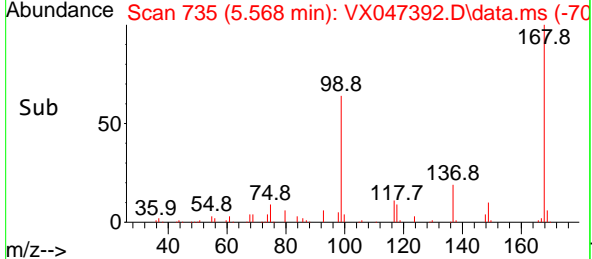
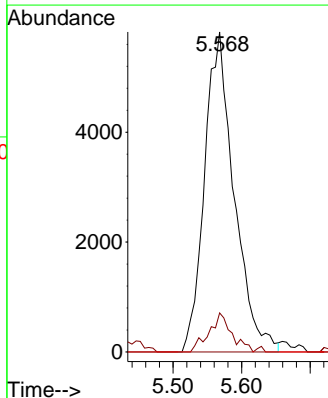
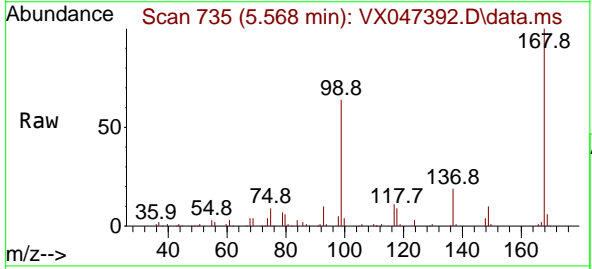
Ion	Ratio	Lower	Upper
113	100		
111	103.2	81.4	122.2
192	18.0	14.1	21.1



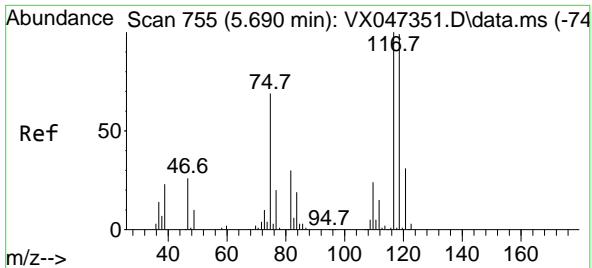
#36  
 1,1-Dichloropropene  
 Concen: 4.003 ug/l  
 RT: 5.568 min Scan# 735  
 Delta R.T. -0.140 min  
 Lab File: VX047392.D  
 Acq: 18 Aug 2025 18:48

Tgt Ion: 75 Resp: 17451

Ion	Ratio	Lower	Upper
75	100		
110	9.3	17.4	52.2#
77	0.0	24.4	36.6#



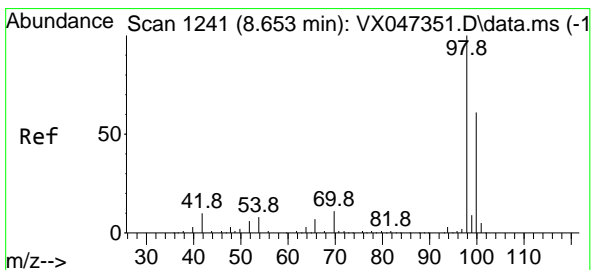
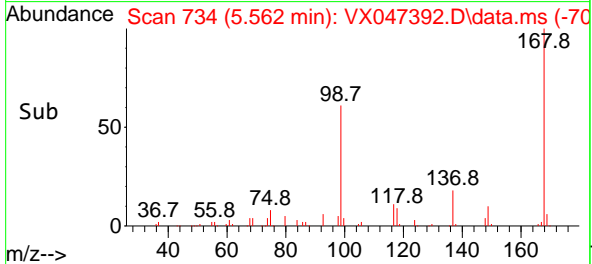
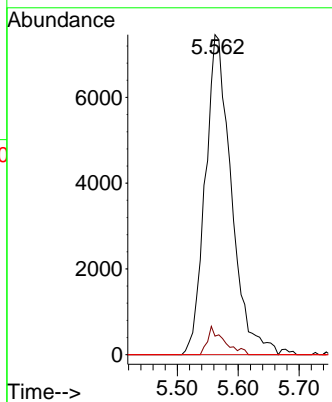
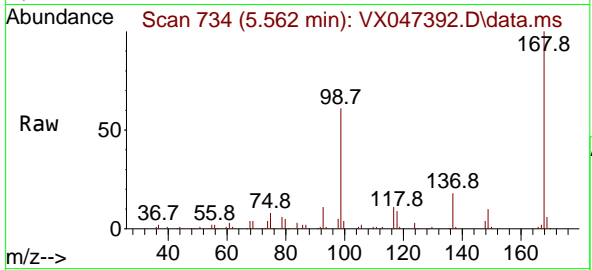




#38  
 Carbon Tetrachloride  
 Concen: 4.656 ug/l  
 RT: 5.562 min Scan# 71  
 Delta R.T. -0.128 min  
 Lab File: VX047392.D  
 Acq: 18 Aug 2025 18:48

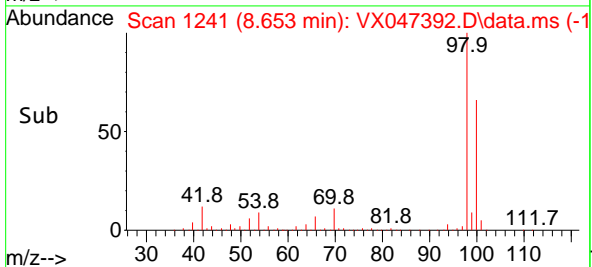
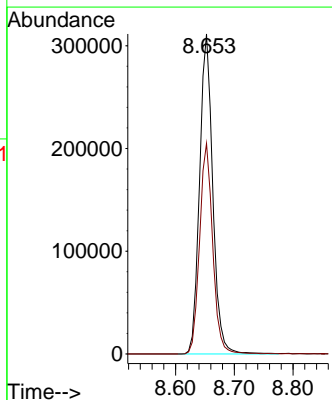
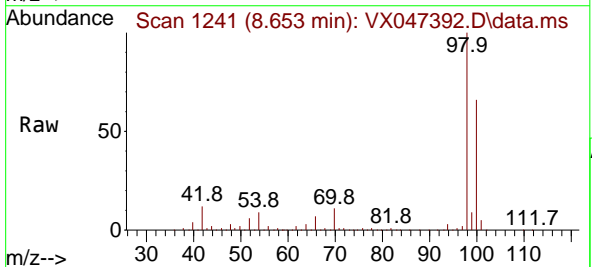
Instrument : MSVOA\_X  
 ClientSampleId : TW-84SB-S

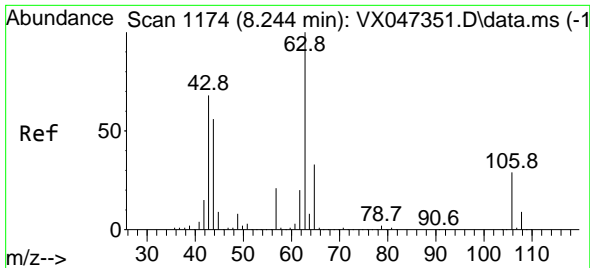
Tgt Ion:117 Resp: 22181  
 Ion Ratio Lower Upper  
 117 100  
 119 5.8 78.5 117.7#  
 121 0.0 24.7 37.1#



#50  
 Toluene-d8  
 Concen: 49.278 ug/l  
 RT: 8.653 min Scan# 1241  
 Delta R.T. 0.000 min  
 Lab File: VX047392.D  
 Acq: 18 Aug 2025 18:48

Tgt Ion: 98 Resp: 486424  
 Ion Ratio Lower Upper  
 98 100  
 100 65.4 53.9 80.9

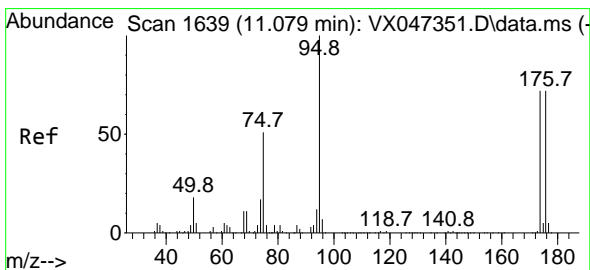
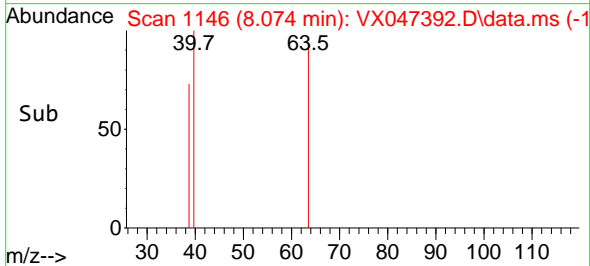
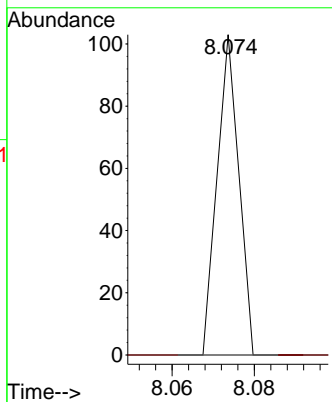
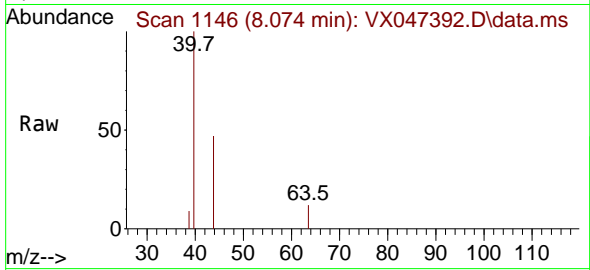




#58  
 2-Chloroethyl Vinyl ether  
 Concen: 8.372 ug/l  
 RT: 8.074 min Scan# 1114  
 Delta R.T. -0.171 min  
 Lab File: VX047392.D  
 Acq: 18 Aug 2025 18:48

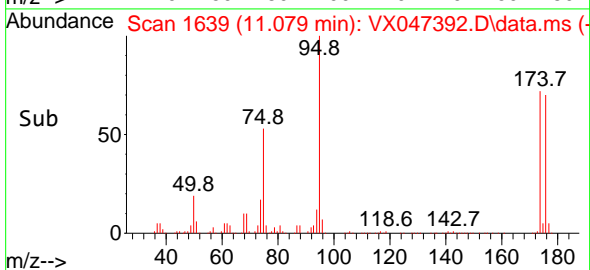
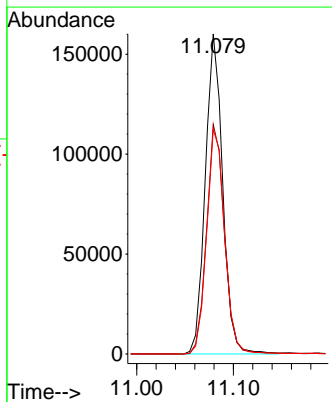
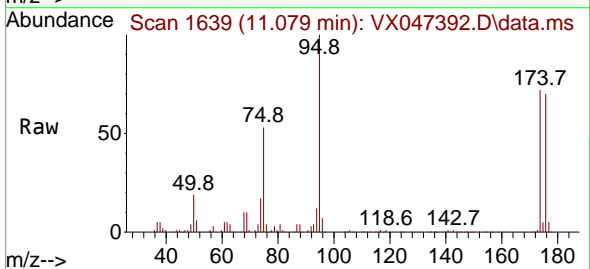
Instrument : MSVOA\_X  
 ClientSampleId : TW-84SB-S

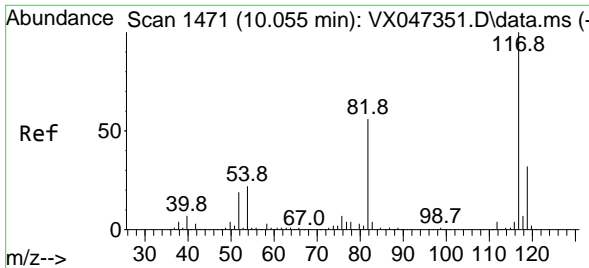
Tgt Ion: 63 Resp: 38  
 Ion Ratio Lower Upper  
 63 100  
 106 0.0 22.8 34.2#



#62  
 4-Bromofluorobenzene  
 Concen: 55.110 ug/l  
 RT: 11.079 min Scan# 1639  
 Delta R.T. 0.000 min  
 Lab File: VX047392.D  
 Acq: 18 Aug 2025 18:48

Tgt Ion: 95 Resp: 200744  
 Ion Ratio Lower Upper  
 95 100  
 174 73.6 0.0 148.0  
 176 72.5 0.0 145.4



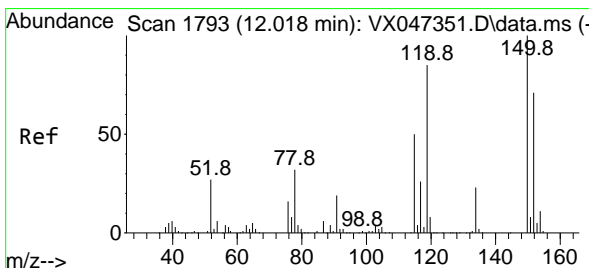
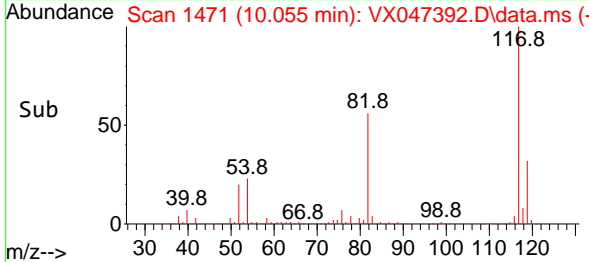
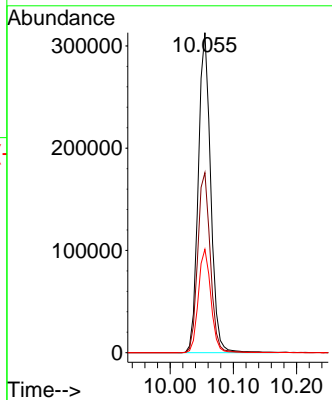
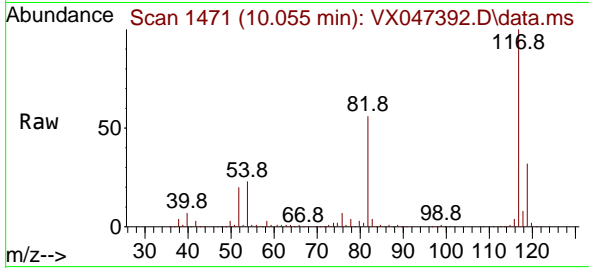


#63  
 Chlorobenzene-d5  
 Concen: 50.000 ug/l  
 RT: 10.055 min Scan# 14  
 Delta R.T. 0.000 min  
 Lab File: VX047392.D  
 Acq: 18 Aug 2025 18:48

Instrument :  
 MSVOA\_X  
 ClientSampleId :  
 TW-84SB-S

Tgt Ion:117 Resp: 427339

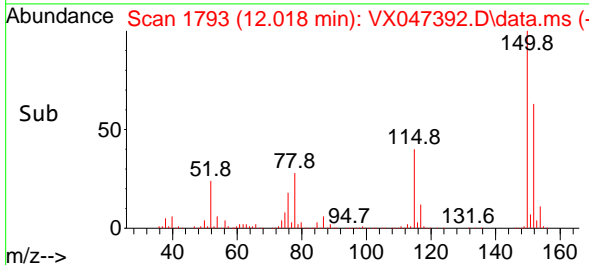
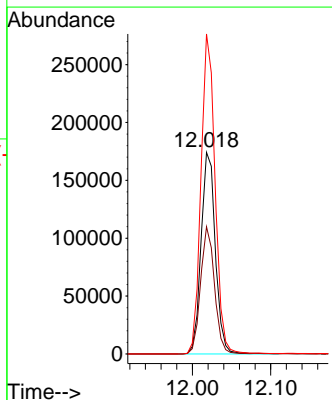
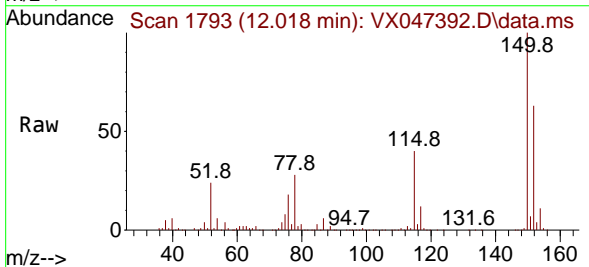
Ion	Ratio	Lower	Upper
117	100		
82	56.2	45.0	67.4
119	32.3	25.8	38.8

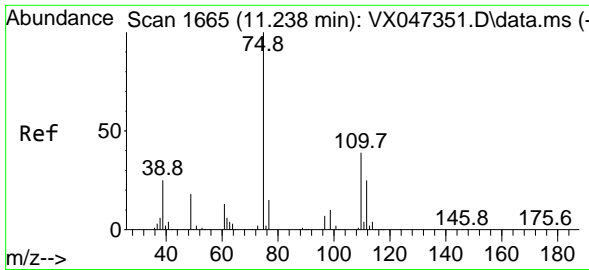


#72  
 1,4-Dichlorobenzene-d4  
 Concen: 50.000 ug/l  
 RT: 12.018 min Scan# 1793  
 Delta R.T. 0.000 min  
 Lab File: VX047392.D  
 Acq: 18 Aug 2025 18:48

Tgt Ion:152 Resp: 220943

Ion	Ratio	Lower	Upper
152	100		
115	61.6	44.6	133.8
150	156.4	0.0	349.8

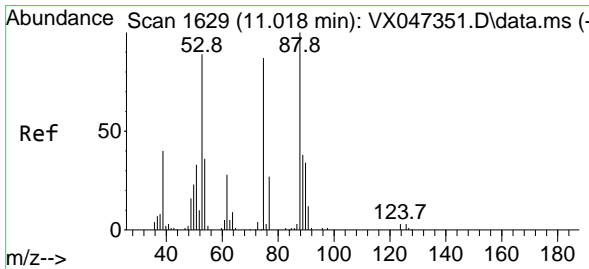
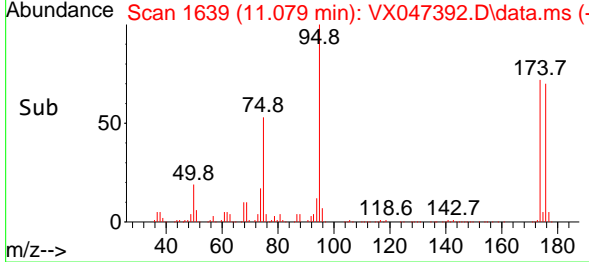
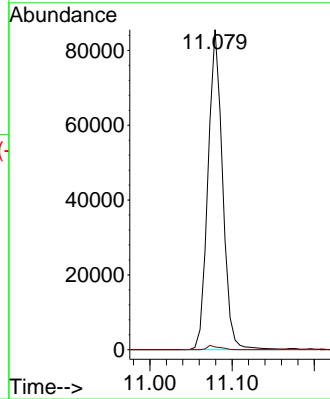
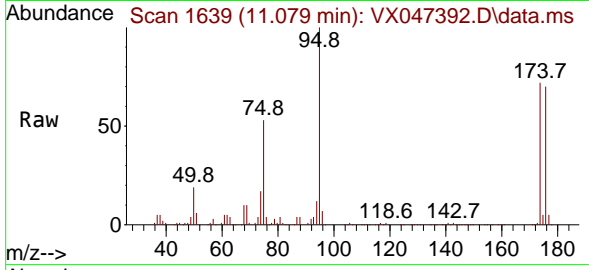




#76  
 1,2,3-Trichloropropane  
 Concen: 25.956 ug/l  
 RT: 11.079 min Scan# 1639  
 Delta R.T. -0.159 min  
 Lab File: VX047392.D  
 Acq: 18 Aug 2025 18:48

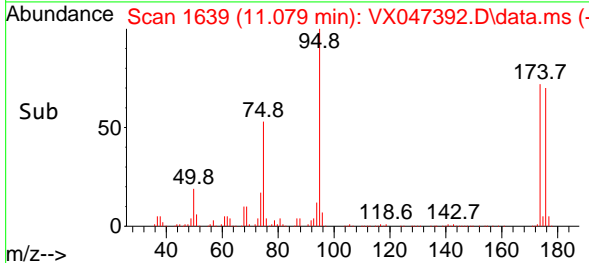
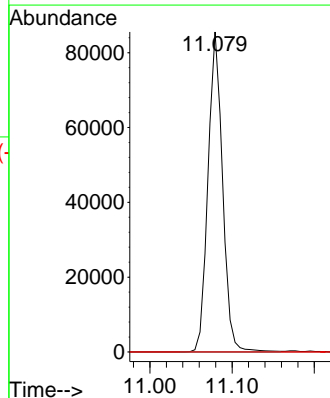
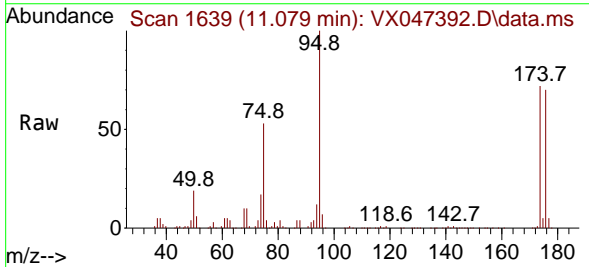
Instrument : MSVOA\_X  
 ClientSampleId : TW-84SB-S

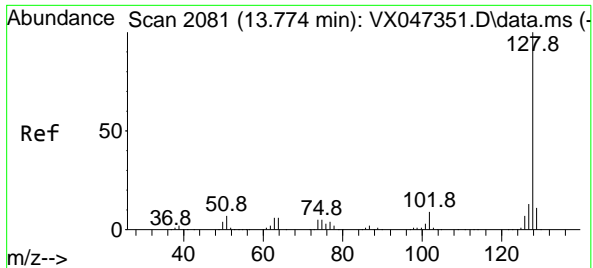
Tgt Ion: 75 Resp: 105181  
 Ion Ratio Lower Upper  
 75 100  
 77 1.1 19.4 58.2#



#81  
 trans-1,4-Dichloro-2-butene  
 Concen: 102.942 ug/l  
 RT: 11.079 min Scan# 1639  
 Delta R.T. 0.061 min  
 Lab File: VX047392.D  
 Acq: 18 Aug 2025 18:48

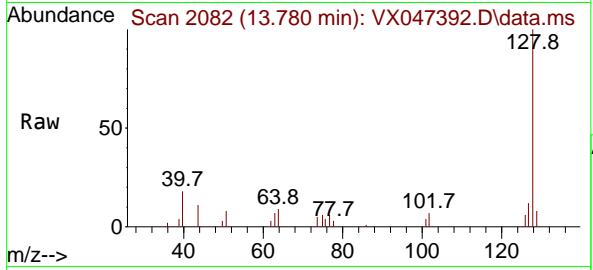
Tgt Ion: 75 Resp: 105181  
 Ion Ratio Lower Upper  
 75 100  
 53 0.0 85.2 127.8#  
 89 0.0 36.7 55.1#





#95  
 Naphthalene  
 Concen: 0.458 ug/l  
 RT: 13.780 min Scan# 20  
 Delta R.T. 0.006 min  
 Lab File: VX047392.D  
 Acq: 18 Aug 2025 18:48

Instrument : MSVOA\_X  
 ClientSampleId : TW-84SB-S



Tgt Ion:128 Resp: 6717

Ion	Ratio	Lower	Upper
128	100		
127	11.7	10.1	15.1
129	9.9	8.7	13.1

