

Data Path : Z:\voasrv\HPCHEM1\MSVOA\_X\Data\VX081825\  
 Data File : VX047393.D  
 Acq On : 18 Aug 2025 19:10  
 Operator : JC/MD  
 Sample : PB169277TB  
 Misc : 5.0mL/MSVOA\_X/WATER  
 ALS Vial : 24 Sample Multiplier: 1

Instrument :  
 MSVOA\_X  
 ClientSampleId :  
 PB169277TB

Quant Time: Aug 19 01:48:39 2025  
 Quant Method : Z:\voasrv\HPCHEM1\MSVOA\_X\Method\82X081525W.M  
 Quant Title : SW846 8260  
 QLast Update : Mon Aug 18 04:18:28 2025  
 Response via : Initial Calibration

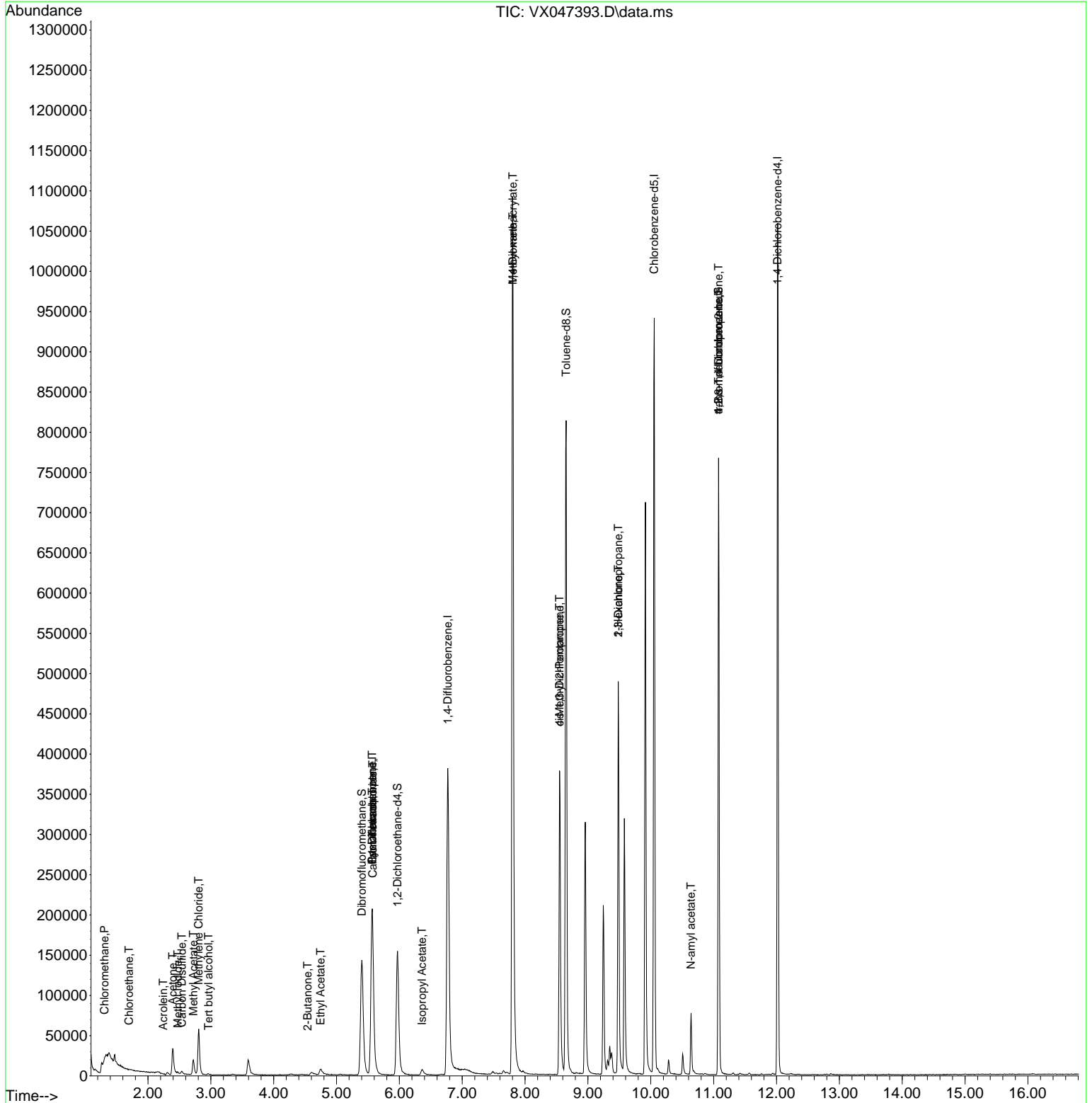
Compound	R.T.	QIon	Response	Conc	Units	Dev(Min)
-----						
Internal Standards						
1) Pentafluorobenzene	5.568	168	205344	50.000	ug/l	0.00
34) 1,4-Difluorobenzene	6.769	114	412961	50.000	ug/l	0.00
63) Chlorobenzene-d5	10.055	117	417657	50.000	ug/l	0.00
72) 1,4-Dichlorobenzene-d4	12.018	152	209669	50.000	ug/l	0.00
System Monitoring Compounds						
33) 1,2-Dichloroethane-d4	5.970	65	164720	57.317	ug/l	0.00
Spiked Amount	50.000	Range 78 - 117	Recovery	=	114.640%	
35) Dibromofluoromethane	5.403	113	136032	50.755	ug/l	0.00
Spiked Amount	50.000	Range 75 - 124	Recovery	=	101.520%	
50) Toluene-d8	8.653	98	487845	50.925	ug/l	0.00
Spiked Amount	50.000	Range 92 - 112	Recovery	=	101.860%	
62) 4-Bromofluorobenzene	11.079	95	199077	56.315	ug/l	0.00
Spiked Amount	50.000	Range 83 - 123	Recovery	=	112.640%	
Target Compounds						
						Qvalue
3) Chloromethane	1.307	50	677	0.287	ug/l #	41
6) Chloroethane	1.697	64	828	0.458	ug/l #	73
10) Methyl Iodide	2.477	142	2292	0.527	ug/l #	88
11) Tert butyl alcohol	2.965	59	235	0.940	ug/l #	72
13) Acrolein	2.239	56	123	0.233	ug/l #	42
16) Acetone	2.392	43	47202	43.696	ug/l	94
17) Carbon Disulfide	2.538	76	6274	0.804	ug/l #	92
18) Methyl Acetate	2.721	43	28082	10.032	ug/l	95
20) Methylene Chloride	2.806	84	27334	9.556	ug/l	94
25) 2-Butanone	4.538	43	414	0.293	ug/l #	50
31) Cyclohexane	5.568	56	4614	0.998	ug/l #	1
36) 1,1-Dichloropropene	5.568	75	16935	4.003	ug/l #	49
37) Ethyl Acetate	4.745	43	13021	2.965	ug/l	98
38) Carbon Tetrachloride	5.574	117	21568	4.665	ug/l #	14
43) Isopropyl Acetate	6.361	43	10338	1.638	ug/l #	83
48) Methyl methacrylate	7.805	41	108435	33.108	ug/l #	44
49) 1,4-Dioxane	7.805	88	42	1.319	ug/l #	1
51) 4-Methyl-2-Pentanone	8.549	43	136322	37.543	ug/l #	49
54) cis-1,3-Dichloropropene	8.549	75	63089	13.375	ug/l #	62
57) 1,3-Dichloropropane	9.482	76	4547	0.898	ug/l #	42
59) 2-Hexanone	9.482	43	61081	24.319	ug/l #	54
74) N-amyl acetate	10.640	43	20495	3.289	ug/l #	53
76) 1,2,3-Trichloropropane	11.079	75	104828	27.259	ug/l #	39
81) trans-1,4-Dichloro-2-b...	11.079	75	104828	107.718	ug/l #	7

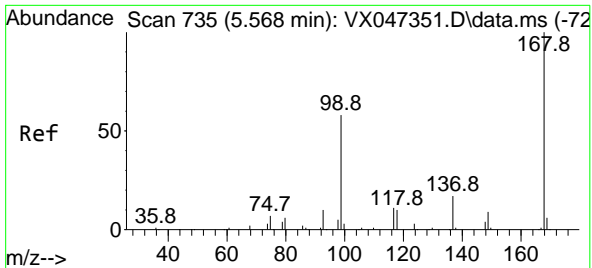
(#) = qualifier out of range (m) = manual integration (+) = signals summed

Data Path : Z:\voasrv\HPCHEM1\MSVOA\_X\Data\VX081825\  
 Data File : VX047393.D  
 Acq On : 18 Aug 2025 19:10  
 Operator : JC/MD  
 Sample : PB169277TB  
 Misc : 5.0mL/MSVOA\_X/WATER  
 ALS Vial : 24 Sample Multiplier: 1

Instrument :  
 MSVOA\_X  
 ClientSampleId :  
 PB169277TB

Quant Time: Aug 19 01:48:39 2025  
 Quant Method : Z:\voasrv\HPCHEM1\MSVOA\_X\Method\82X081525W.M  
 Quant Title : SW846 8260  
 QLast Update : Mon Aug 18 04:18:28 2025  
 Response via : Initial Calibration

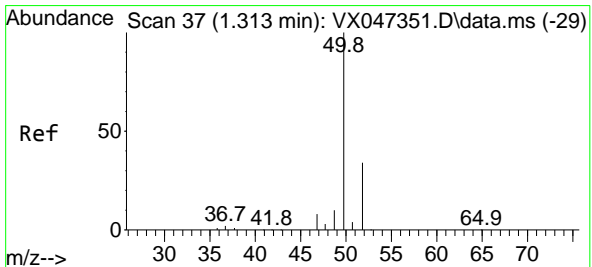
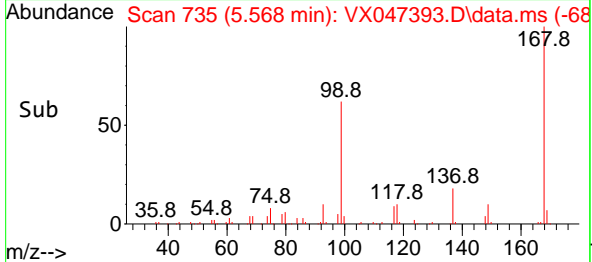
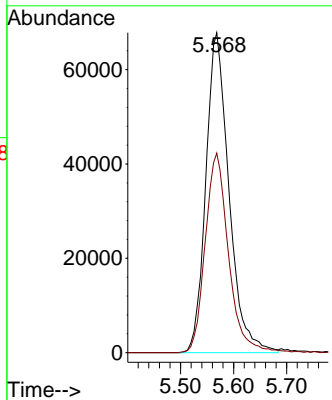
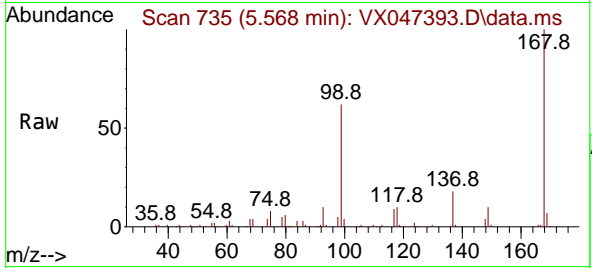




#1  
 Pentafluorobenzene  
 Concen: 50.000 ug/l  
 RT: 5.568 min Scan# 71  
 Delta R.T. 0.000 min  
 Lab File: VX047393.D  
 Acq: 18 Aug 2025 19:10

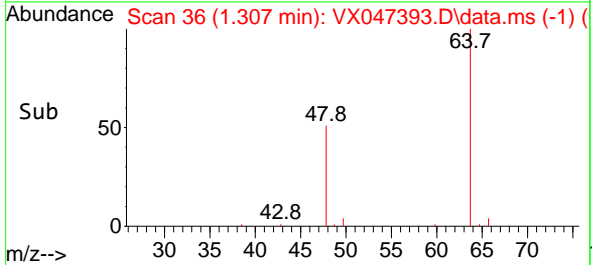
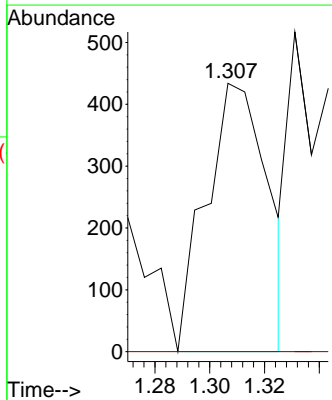
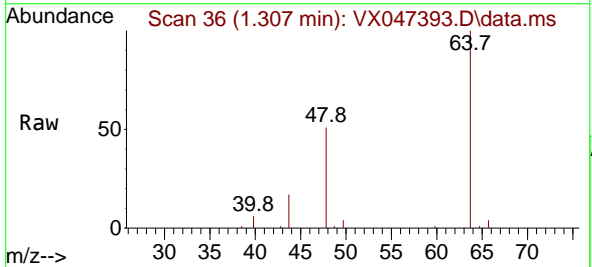
Instrument : MSVOA\_X  
 ClientSampleId : PB169277TB

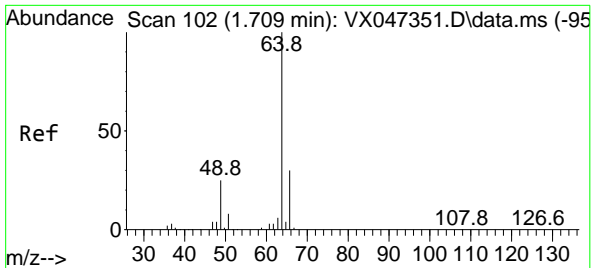
Tgt Ion:168 Resp: 205344  
 Ion Ratio Lower Upper  
 168 100  
 99 62.4 47.9 71.9



#3  
 Chloromethane  
 Concen: 0.287 ug/l  
 RT: 1.307 min Scan# 36  
 Delta R.T. -0.006 min  
 Lab File: VX047393.D  
 Acq: 18 Aug 2025 19:10

Tgt Ion: 50 Resp: 677  
 Ion Ratio Lower Upper  
 50 100  
 52 0.0 27.0 40.4#

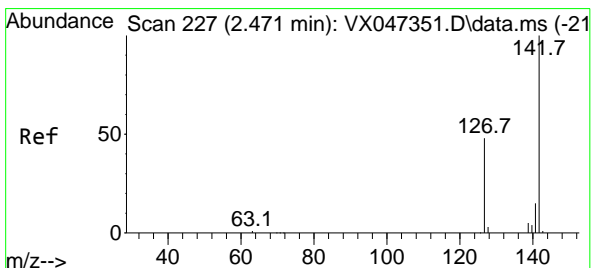
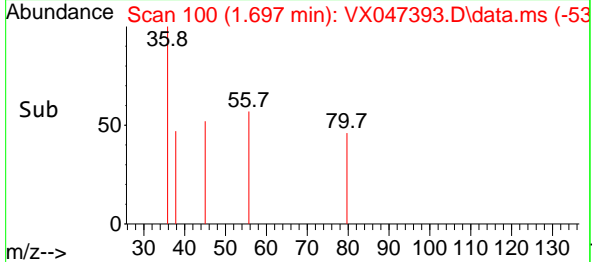
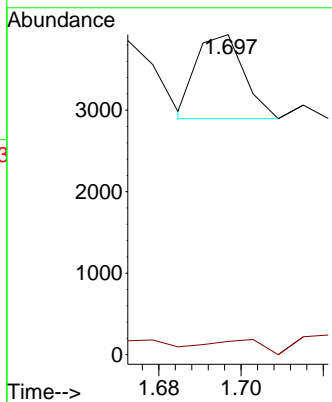
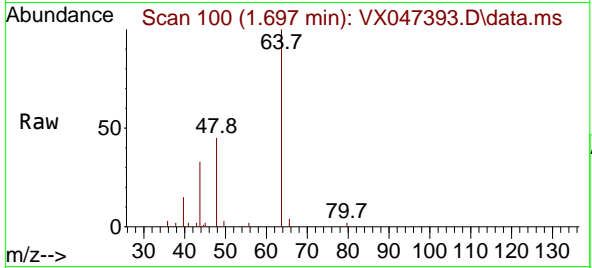




#6  
 Chloroethane  
 Concen: 0.458 ug/l  
 RT: 1.697 min Scan# 10  
 Delta R.T. -0.012 min  
 Lab File: VX047393.D  
 Acq: 18 Aug 2025 19:10

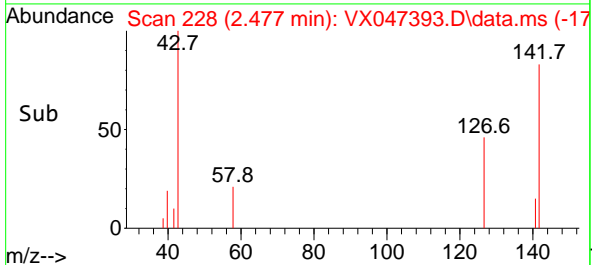
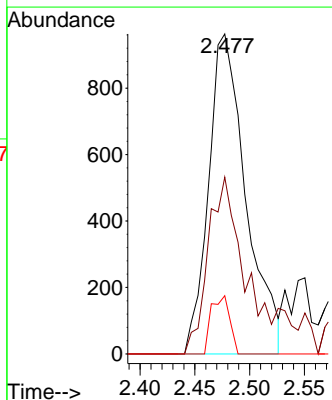
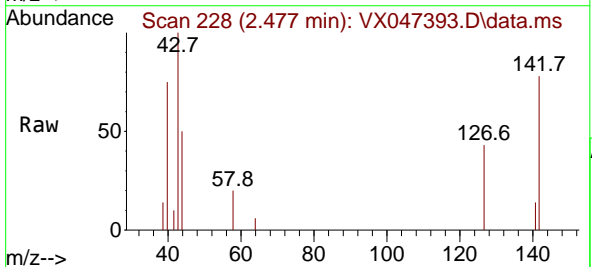
Instrument : MSVOA\_X  
 ClientSampleId : PB169277TB

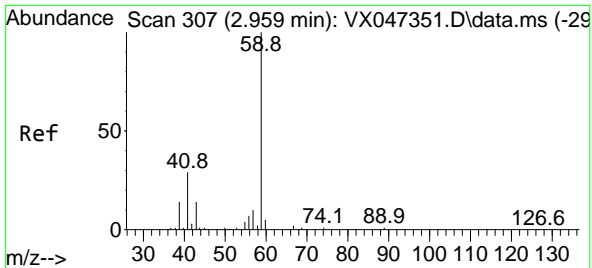
Tgt Ion: 64 Resp: 828  
 Ion Ratio Lower Upper  
 64 100  
 66 15.7 24.4 36.6#



#10  
 Methyl Iodide  
 Concen: 0.527 ug/l  
 RT: 2.477 min Scan# 228  
 Delta R.T. 0.006 min  
 Lab File: VX047393.D  
 Acq: 18 Aug 2025 19:10

Tgt Ion:142 Resp: 2292  
 Ion Ratio Lower Upper  
 142 100  
 127 52.7 36.1 54.1  
 141 8.9 11.1 16.7#

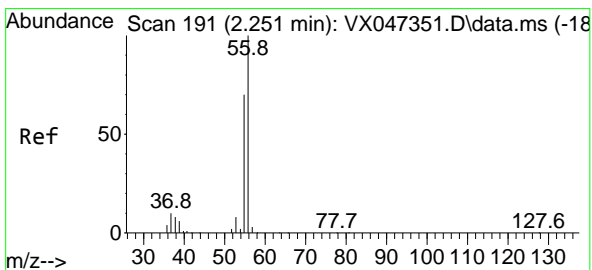
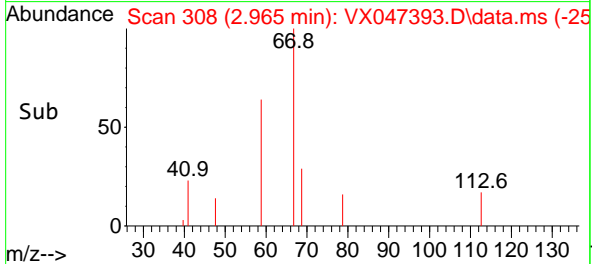
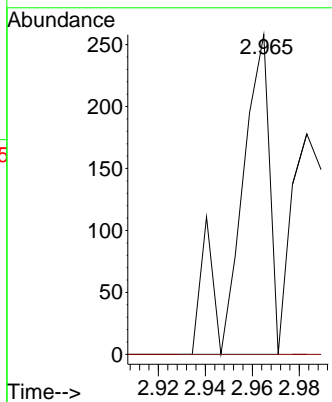
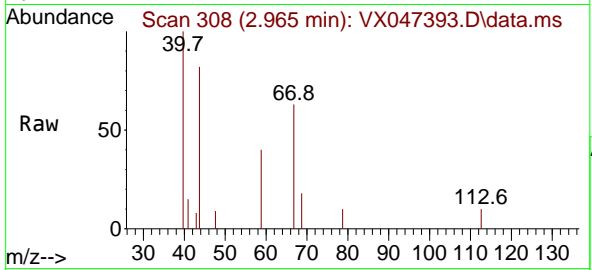




#11  
 Tert butyl alcohol  
 Concen: 0.940 ug/l  
 RT: 2.965 min Scan# 30  
 Delta R.T. 0.006 min  
 Lab File: VX047393.D  
 Acq: 18 Aug 2025 19:10

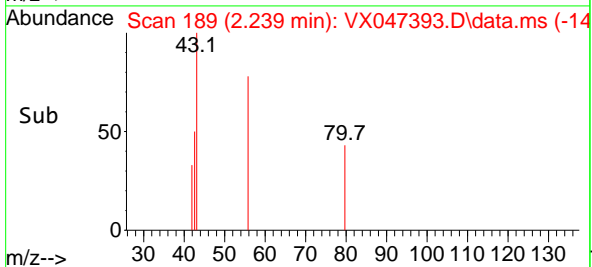
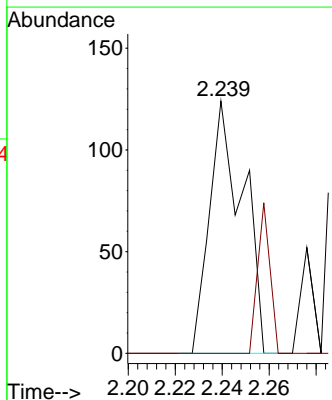
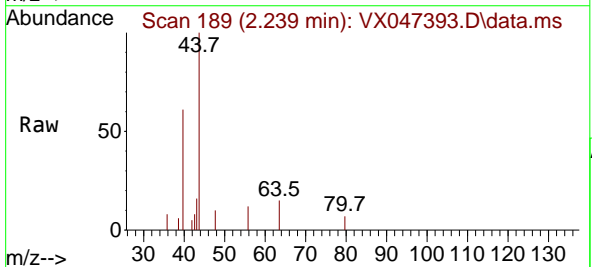
Instrument : MSVOA\_X  
 ClientSampleId : PB169277TB

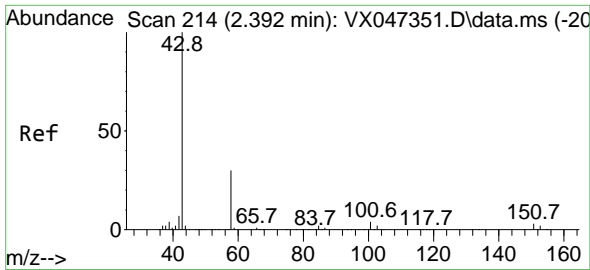
Tgt Ion: 59 Resp: 235  
 Ion Ratio Lower Upper  
 59 100  
 57 0.0 8.3 12.5#



#13  
 Acrolein  
 Concen: 0.233 ug/l  
 RT: 2.239 min Scan# 189  
 Delta R.T. -0.012 min  
 Lab File: VX047393.D  
 Acq: 18 Aug 2025 19:10

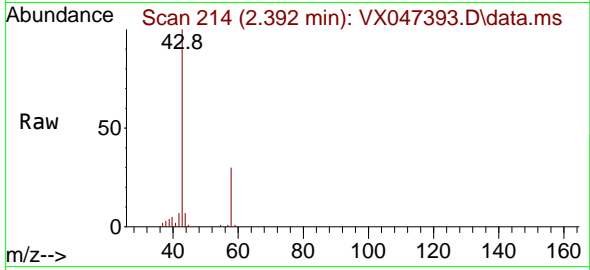
Tgt Ion: 56 Resp: 123  
 Ion Ratio Lower Upper  
 56 100  
 55 22.0 55.5 83.3#



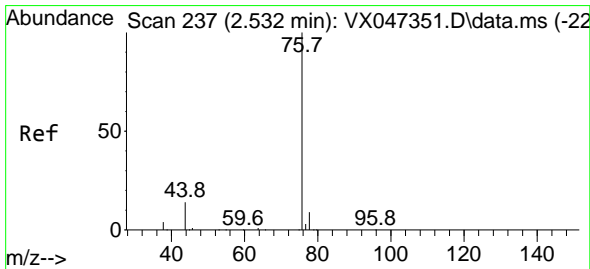
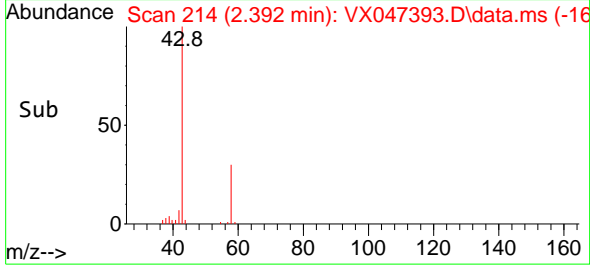
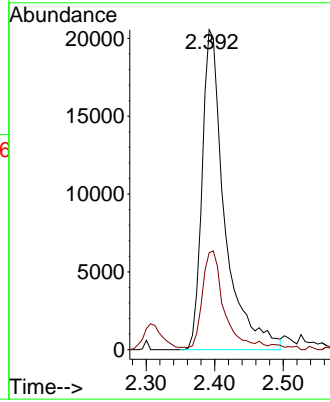


#16  
 Acetone  
 Concen: 43.696 ug/l  
 RT: 2.392 min Scan# 214  
 Delta R.T. 0.000 min  
 Lab File: VX047393.D  
 Acq: 18 Aug 2025 19:10

Instrument : MSVOA\_X  
 ClientSampleId : PB169277TB

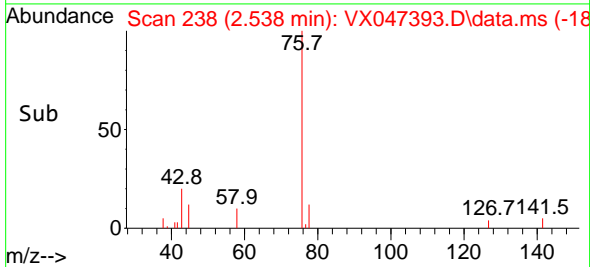
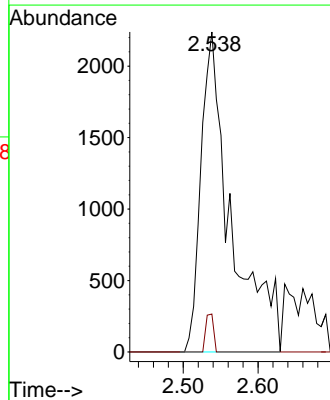
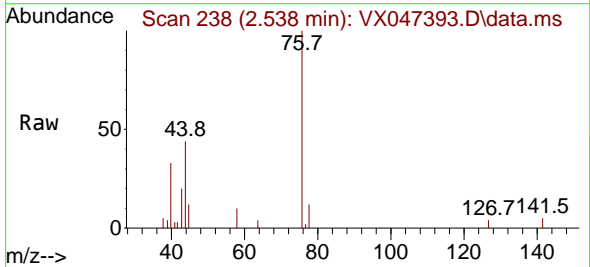


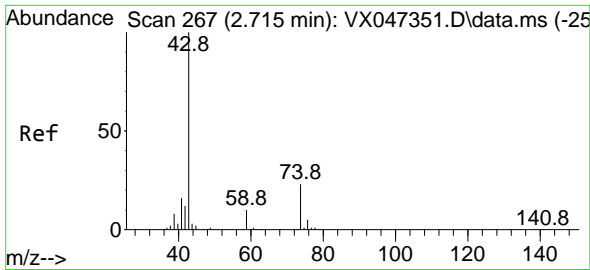
Tgt Ion: 43 Resp: 47202  
 Ion Ratio Lower Upper  
 43 100  
 58 27.8 24.8 37.2



#17  
 Carbon Disulfide  
 Concen: 0.804 ug/l  
 RT: 2.538 min Scan# 238  
 Delta R.T. 0.006 min  
 Lab File: VX047393.D  
 Acq: 18 Aug 2025 19:10

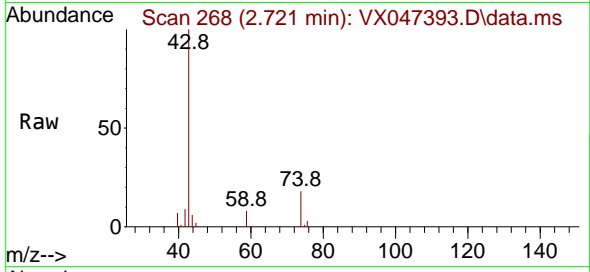
Tgt Ion: 76 Resp: 6274  
 Ion Ratio Lower Upper  
 76 100  
 78 11.8 7.2 10.8#



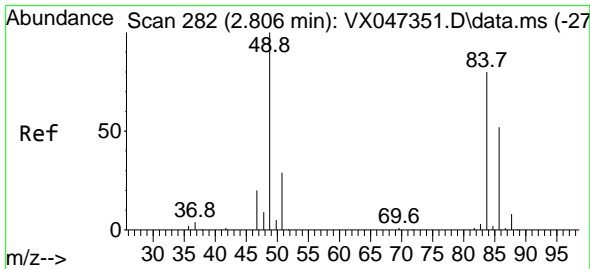
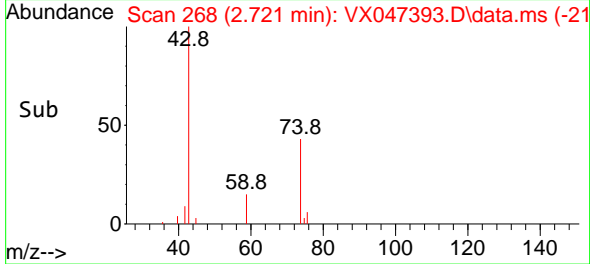
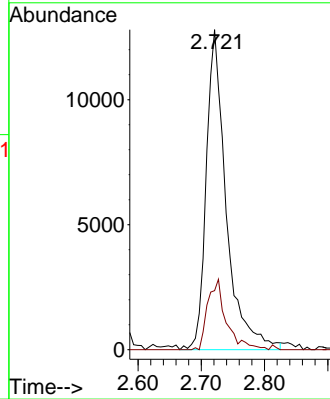


#18  
 Methyl Acetate  
 Concen: 10.032 ug/l  
 RT: 2.721 min Scan# 20  
 Delta R.T. 0.006 min  
 Lab File: VX047393.D  
 Acq: 18 Aug 2025 19:10

Instrument :  
 MSVOA\_X  
 ClientSampleId :  
 PB169277TB

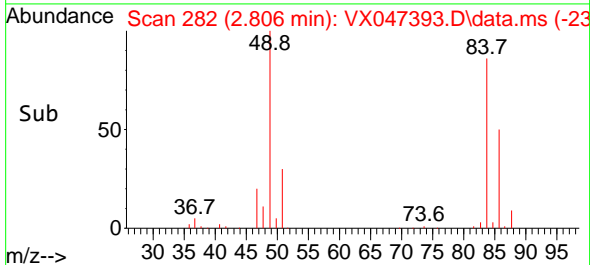
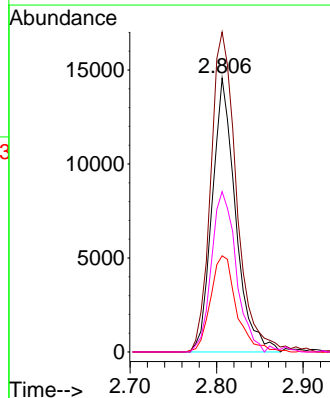
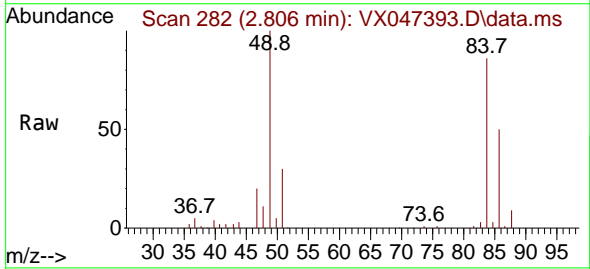


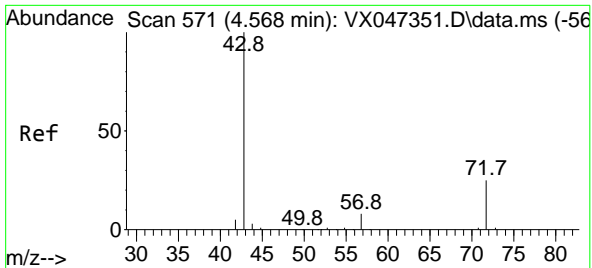
Tgt Ion: 43 Resp: 28082  
 Ion Ratio Lower Upper  
 43 100  
 74 20.5 18.4 27.6



#20  
 Methylene Chloride  
 Concen: 9.556 ug/l  
 RT: 2.806 min Scan# 282  
 Delta R.T. 0.000 min  
 Lab File: VX047393.D  
 Acq: 18 Aug 2025 19:10

Tgt Ion: 84 Resp: 27334  
 Ion Ratio Lower Upper  
 84 100  
 49 116.9 100.1 150.1  
 51 35.5 29.5 44.3  
 86 59.2 51.8 77.8

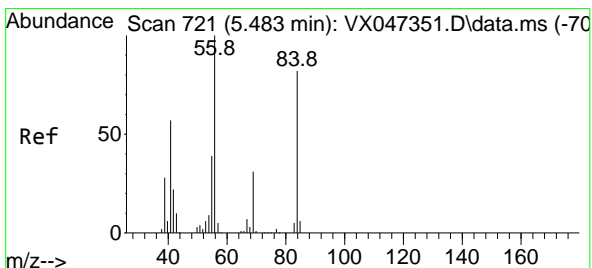
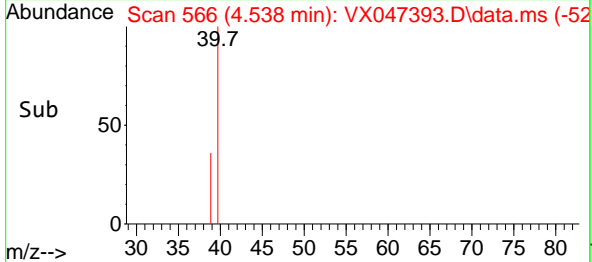
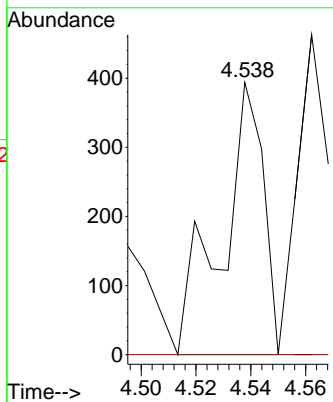
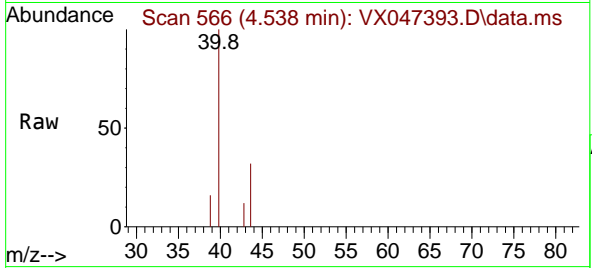




#25  
 2-Butanone  
 Concen: 0.293 ug/l  
 RT: 4.538 min Scan# 50  
 Delta R.T. -0.030 min  
 Lab File: VX047393.D  
 Acq: 18 Aug 2025 19:10

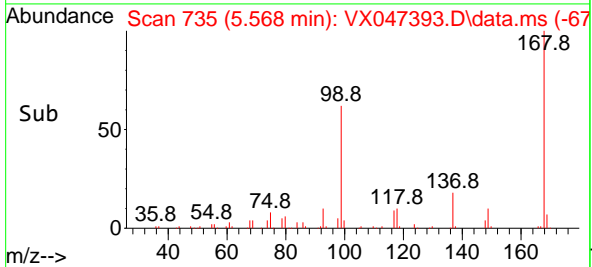
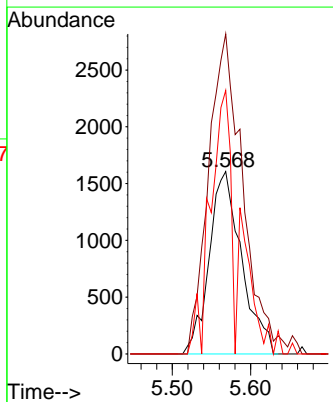
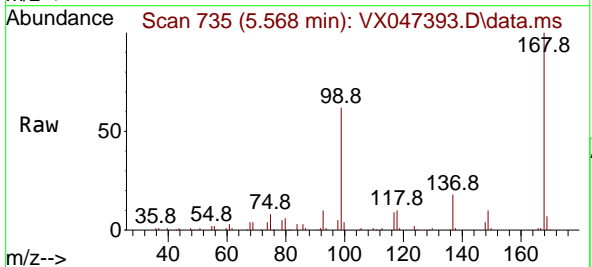
Instrument : MSVOA\_X  
 ClientSampleId : PB169277TB

Tgt Ion: 43 Resp: 414  
 Ion Ratio Lower Upper  
 43 100  
 72 0.0 19.8 29.8#

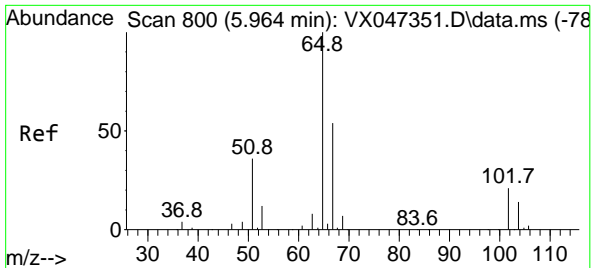


#31  
 Cyclohexane  
 Concen: 0.998 ug/l  
 RT: 5.568 min Scan# 735  
 Delta R.T. 0.085 min  
 Lab File: VX047393.D  
 Acq: 18 Aug 2025 19:10

Tgt Ion: 56 Resp: 4614  
 Ion Ratio Lower Upper  
 56 100  
 69 175.5 24.3 36.5#  
 84 144.5 65.3 97.9#



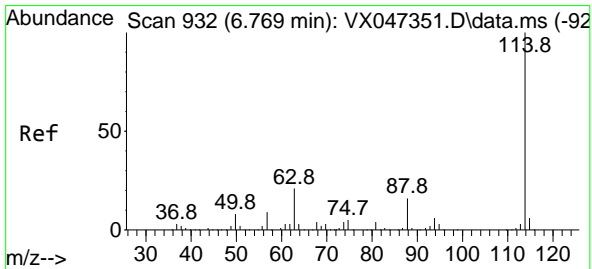
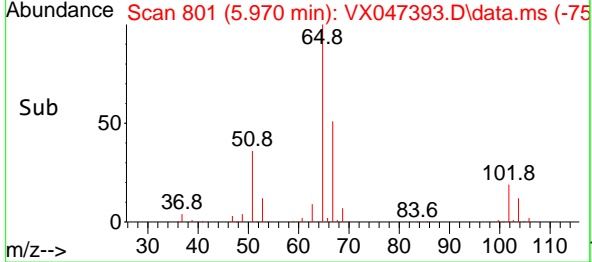
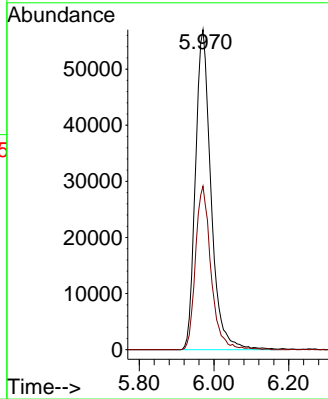
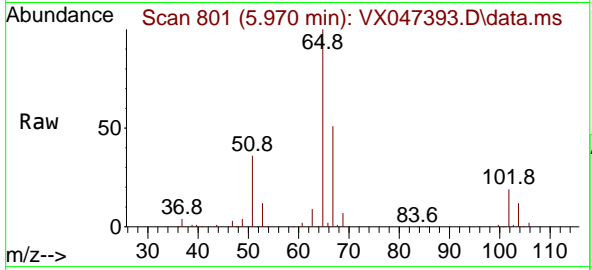




#33  
 1,2-Dichloroethane-d4  
 Concen: 57.317 ug/l  
 RT: 5.970 min Scan# 801  
 Delta R.T. 0.006 min  
 Lab File: VX047393.D  
 Acq: 18 Aug 2025 19:10

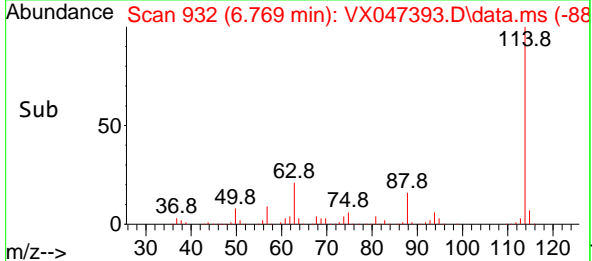
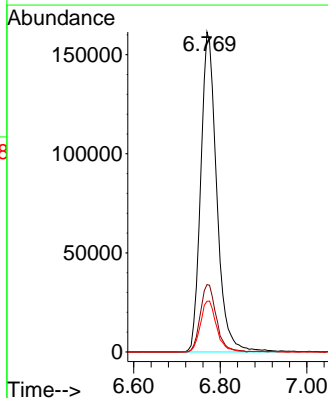
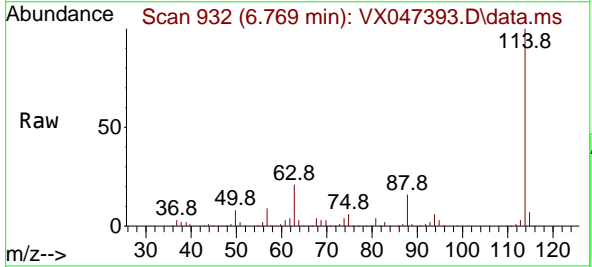
Instrument : MSVOA\_X  
 ClientSampleId : PB169277TB

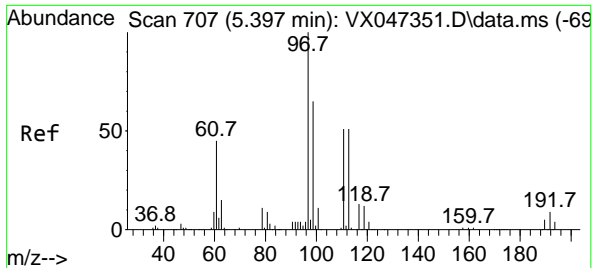
Tgt Ion: 65 Resp: 164720  
 Ion Ratio Lower Upper  
 65 100  
 67 50.9 0.0 106.0



#34  
 1,4-Difluorobenzene  
 Concen: 50.000 ug/l  
 RT: 6.769 min Scan# 932  
 Delta R.T. 0.000 min  
 Lab File: VX047393.D  
 Acq: 18 Aug 2025 19:10

Tgt Ion: 114 Resp: 412961  
 Ion Ratio Lower Upper  
 114 100  
 63 21.1 0.0 42.4  
 88 15.9 0.0 33.0



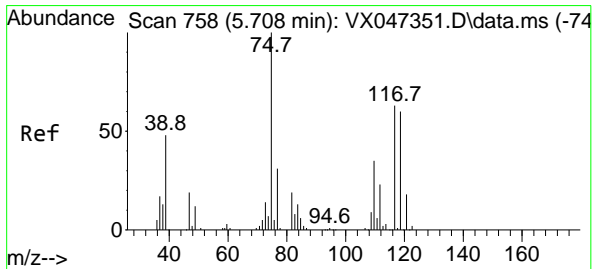
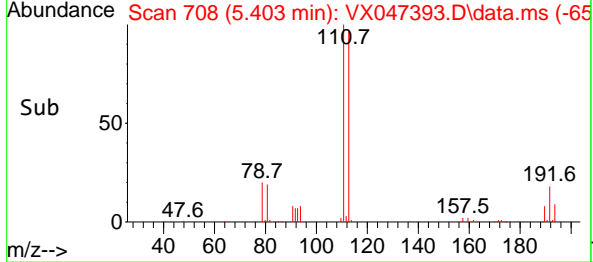
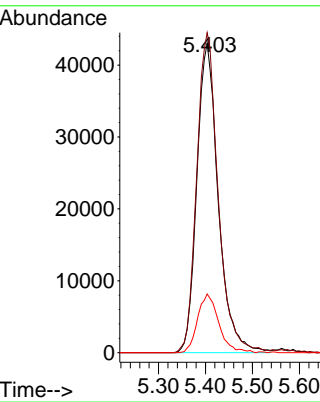
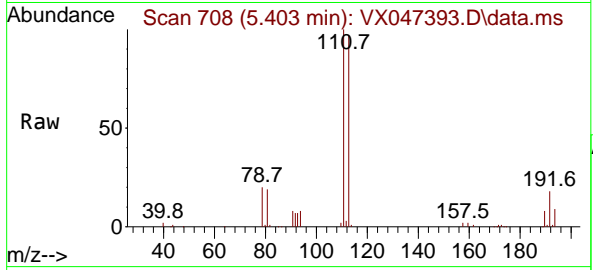


#35  
 Dibromofluoromethane  
 Concen: 50.755 ug/l  
 RT: 5.403 min Scan# 707  
 Delta R.T. 0.006 min  
 Lab File: VX047393.D  
 Acq: 18 Aug 2025 19:10

Instrument : MSVOA\_X  
 ClientSampleId : PB169277TB

Tgt Ion:113 Resp: 136032

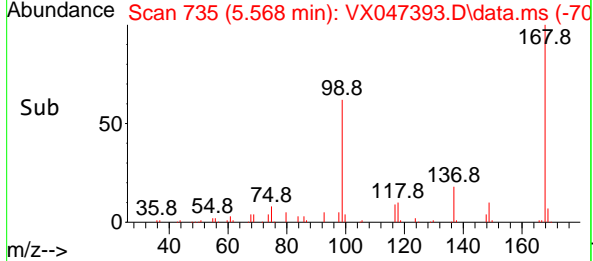
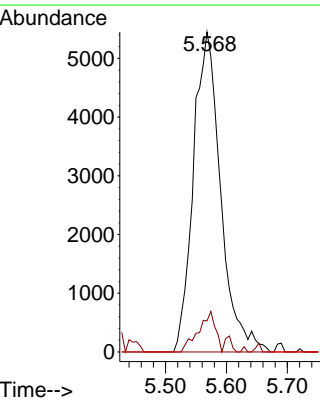
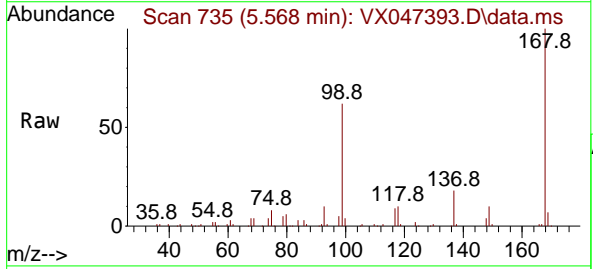
Ion	Ratio	Lower	Upper
113	100		
111	103.7	81.4	122.2
192	18.8	14.1	21.1

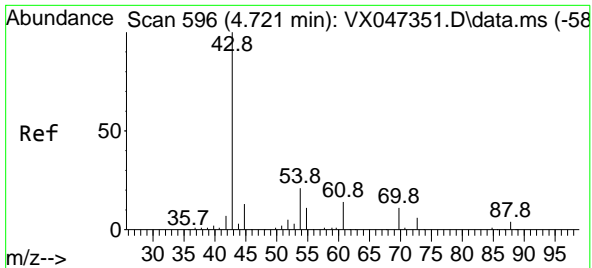


#36  
 1,1-Dichloropropene  
 Concen: 4.003 ug/l  
 RT: 5.568 min Scan# 735  
 Delta R.T. -0.140 min  
 Lab File: VX047393.D  
 Acq: 18 Aug 2025 19:10

Tgt Ion: 75 Resp: 16935

Ion	Ratio	Lower	Upper
75	100		
110	7.9	17.4	52.2#
77	0.0	24.4	36.6#



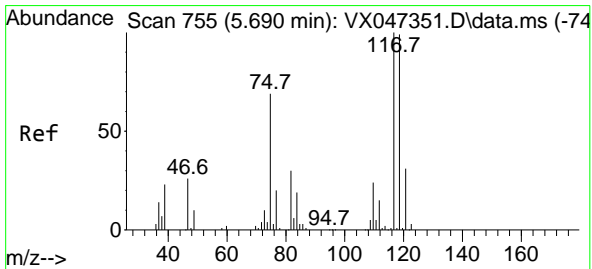
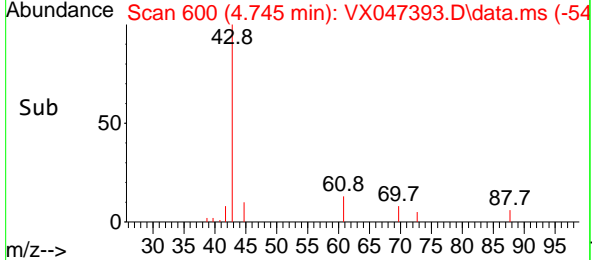
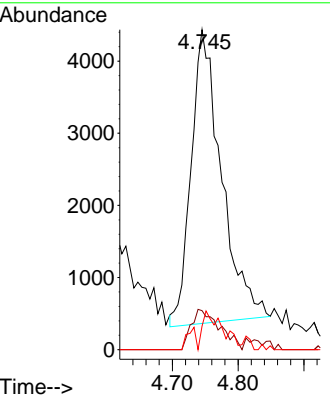
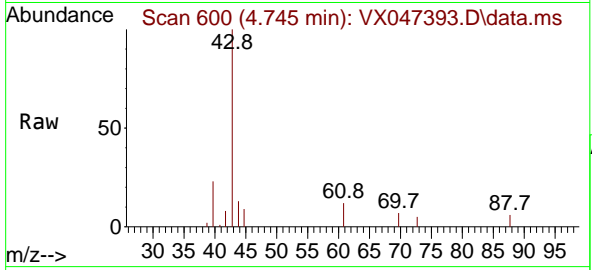


#37  
 Ethyl Acetate  
 Concen: 2.965 ug/l  
 RT: 4.745 min Scan# 601  
 Delta R.T. 0.025 min  
 Lab File: VX047393.D  
 Acq: 18 Aug 2025 19:10

Instrument : MSVOA\_X  
 ClientSampleId : PB169277TB

Tgt Ion: 43 Resp: 13021

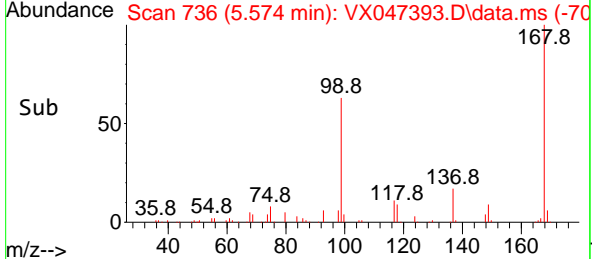
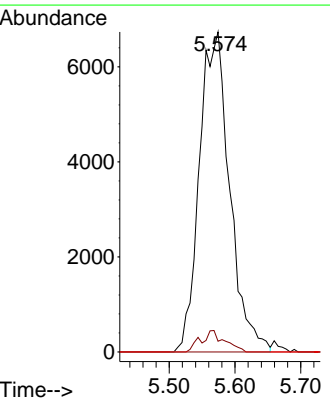
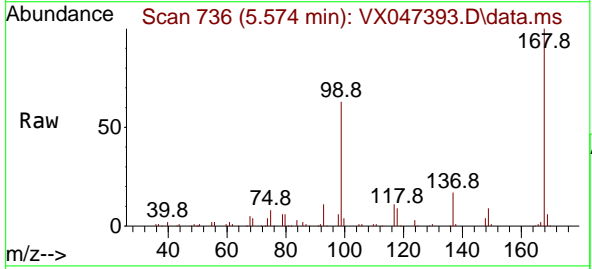
Ion	Ratio	Lower	Upper
43	100		
61	12.9	9.4	14.2
70	8.6	7.0	10.6

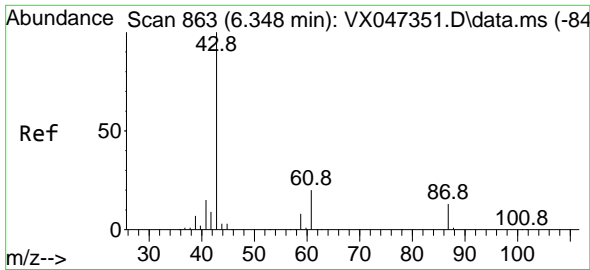


#38  
 Carbon Tetrachloride  
 Concen: 4.665 ug/l  
 RT: 5.574 min Scan# 736  
 Delta R.T. -0.116 min  
 Lab File: VX047393.D  
 Acq: 18 Aug 2025 19:10

Tgt Ion: 117 Resp: 21568

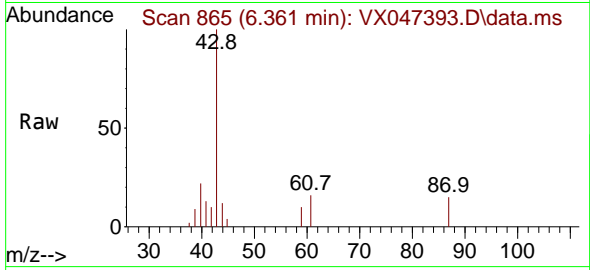
Ion	Ratio	Lower	Upper
117	100		
119	3.3	78.5	117.7#
121	0.0	24.7	37.1#



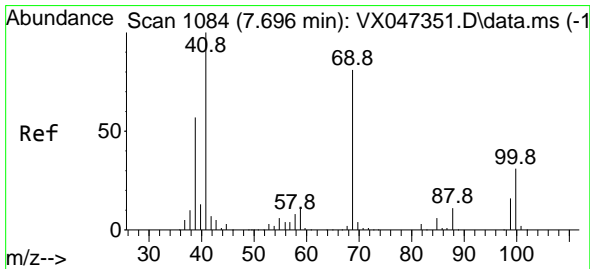
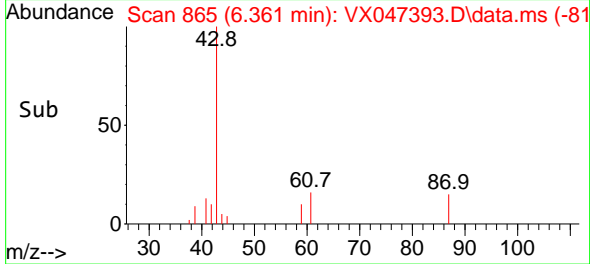
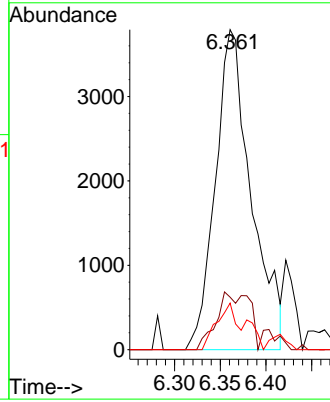


#43  
 Isopropyl Acetate  
 Concen: 1.638 ug/l  
 RT: 6.361 min Scan# 80  
 Delta R.T. 0.012 min  
 Lab File: VX047393.D  
 Acq: 18 Aug 2025 19:10

Instrument :  
 MSVOA\_X  
 ClientSampleId :  
 PB169277TB

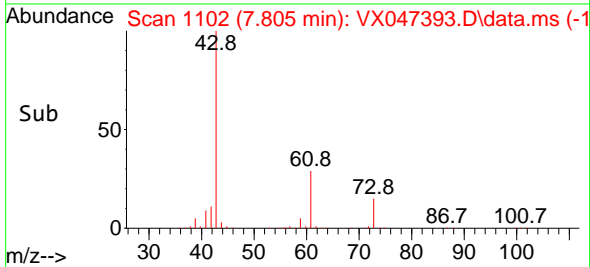
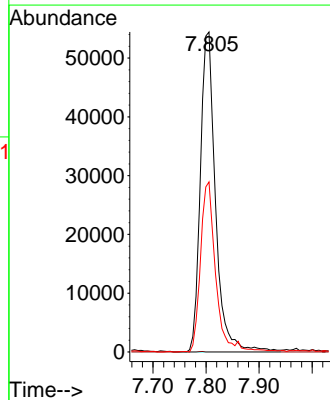
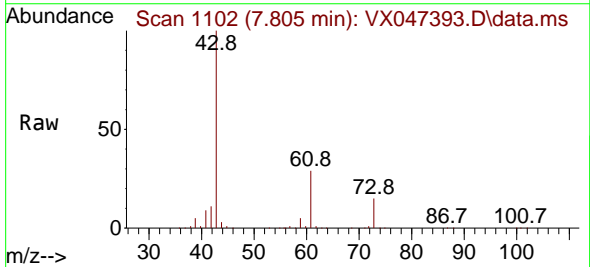


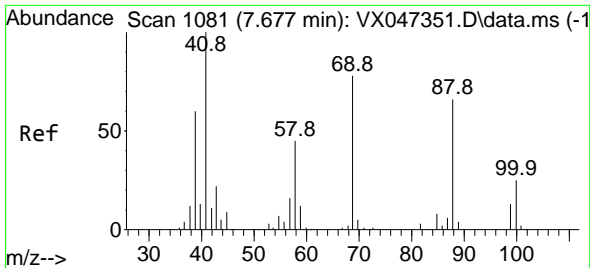
Tgt Ion: 43 Resp: 10338  
 Ion Ratio Lower Upper  
 43 100  
 61 10.0 15.4 23.0#  
 87 8.2 10.2 15.4#



#48  
 Methyl methacrylate  
 Concen: 33.108 ug/l  
 RT: 7.805 min Scan# 1102  
 Delta R.T. 0.110 min  
 Lab File: VX047393.D  
 Acq: 18 Aug 2025 19:10

Tgt Ion: 41 Resp: 108435  
 Ion Ratio Lower Upper  
 41 100  
 69 0.0 65.0 97.4#  
 39 53.5 45.7 68.5

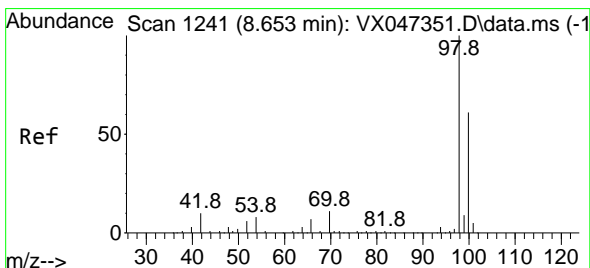
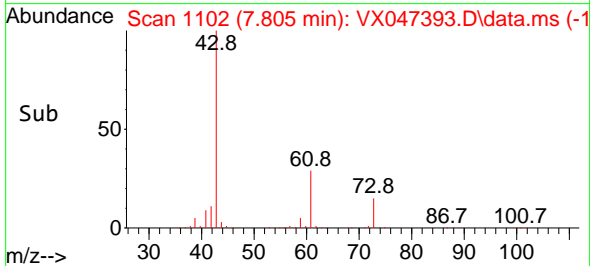
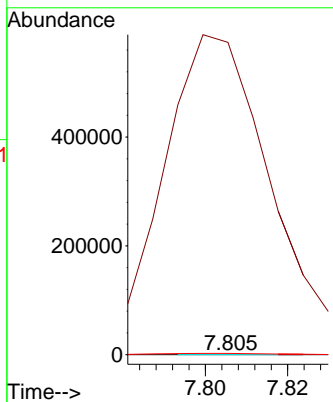
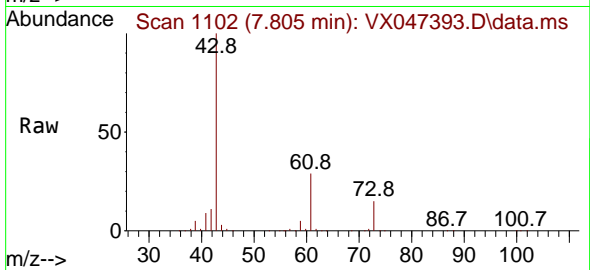




#49  
 1,4-Dioxane  
 Concen: 1.319 ug/l  
 RT: 7.805 min Scan# 1102  
 Delta R.T. 0.128 min  
 Lab File: VX047393.D  
 Acq: 18 Aug 2025 19:10

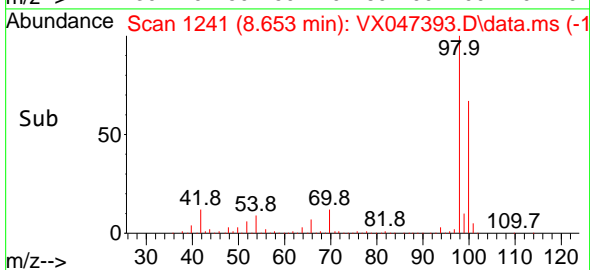
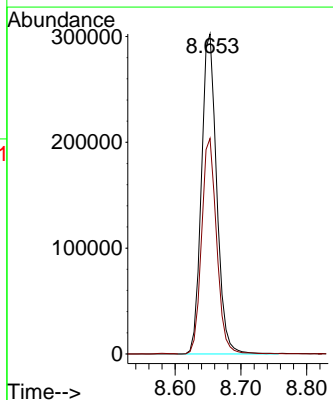
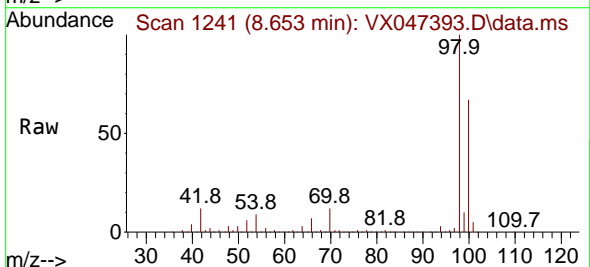
Instrument : MSVOA\_X  
 ClientSampleId : PB169277TB

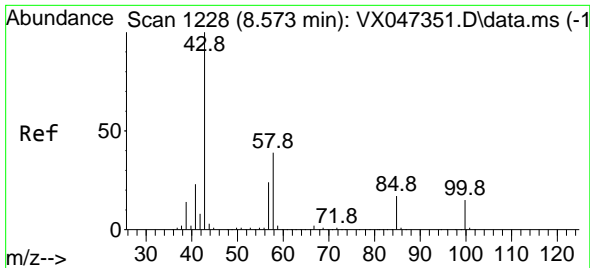
Tgt Ion: 88 Resp: 42  
 Ion Ratio Lower Upper  
 88 100  
 43 2699411.9 32.4 48.6#  
 58 12581.0 56.9 85.3#



#50  
 Toluene-d8  
 Concen: 50.925 ug/l  
 RT: 8.653 min Scan# 1241  
 Delta R.T. 0.000 min  
 Lab File: VX047393.D  
 Acq: 18 Aug 2025 19:10

Tgt Ion: 98 Resp: 487845  
 Ion Ratio Lower Upper  
 98 100  
 100 66.7 53.9 80.9

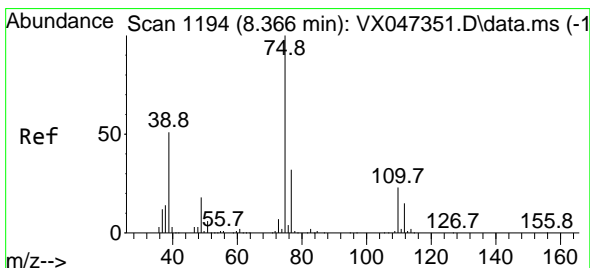
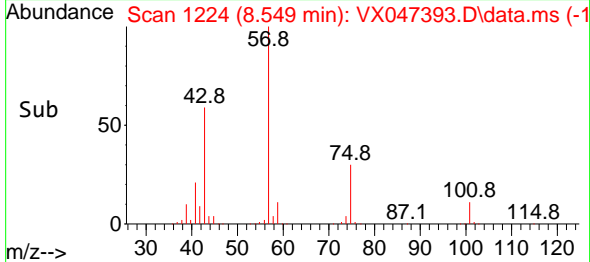
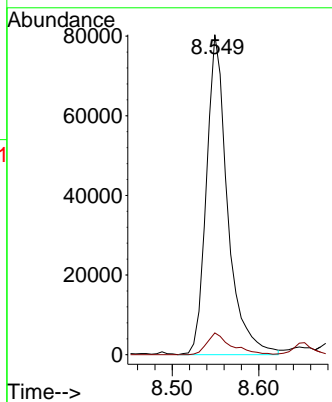
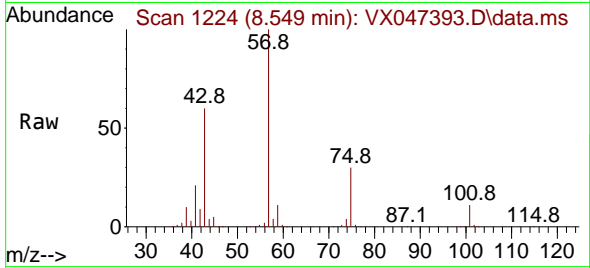




#51  
 4-Methyl-2-Pentanone  
 Concen: 37.543 ug/l  
 RT: 8.549 min Scan# 1124  
 Delta R.T. -0.024 min  
 Lab File: VX047393.D  
 Acq: 18 Aug 2025 19:10

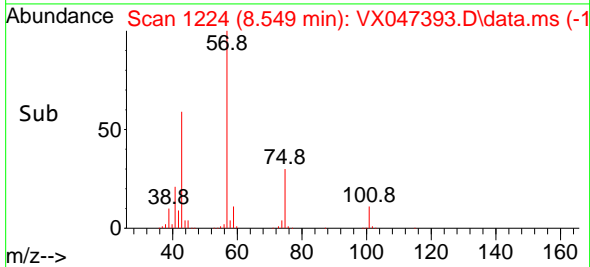
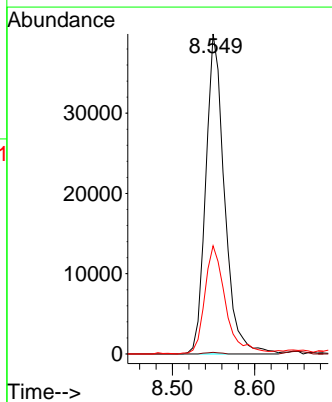
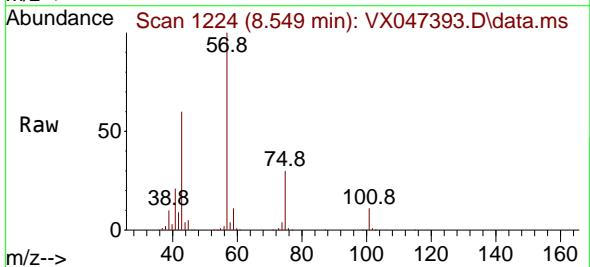
Instrument : MSVOA\_X  
 ClientSampleId : PB169277TB

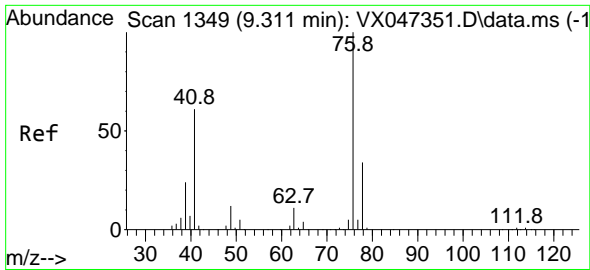
Tgt Ion: 43 Resp: 136322  
 Ion Ratio Lower Upper  
 43 100  
 58 7.8 31.2 46.8#



#54  
 cis-1,3-Dichloropropene  
 Concen: 13.375 ug/l  
 RT: 8.549 min Scan# 1224  
 Delta R.T. 0.183 min  
 Lab File: VX047393.D  
 Acq: 18 Aug 2025 19:10

Tgt Ion: 75 Resp: 63089  
 Ion Ratio Lower Upper  
 75 100  
 77 0.5 25.6 38.4#  
 39 32.8 40.9 61.3#

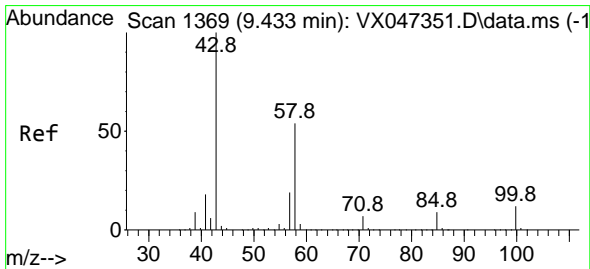
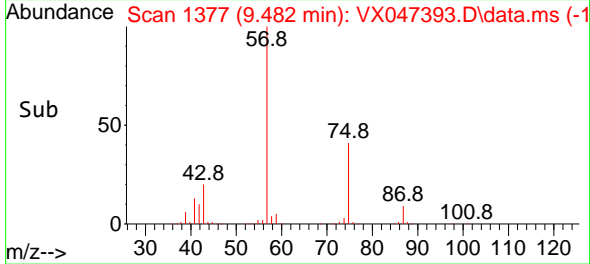
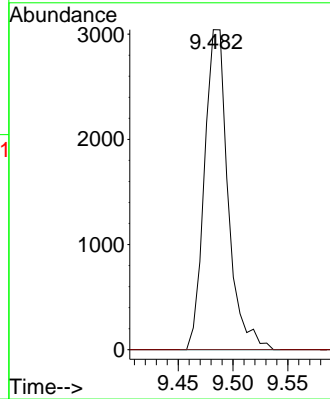
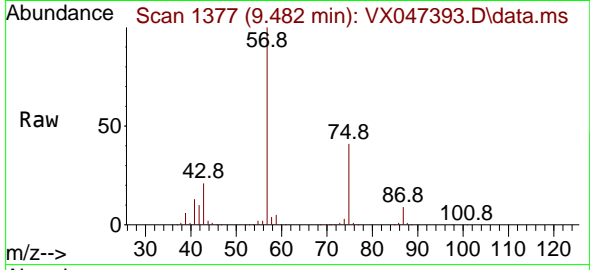




#57  
 1,3-Dichloropropane  
 Concen: 0.898 ug/l  
 RT: 9.482 min Scan# 1377  
 Delta R.T. 0.171 min  
 Lab File: VX047393.D  
 Acq: 18 Aug 2025 19:10

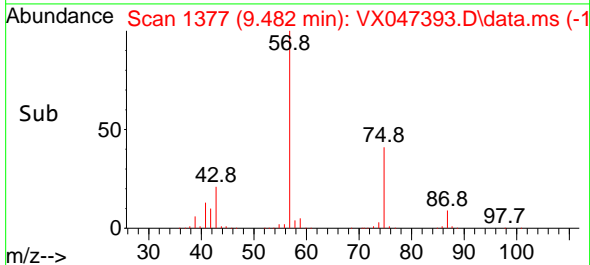
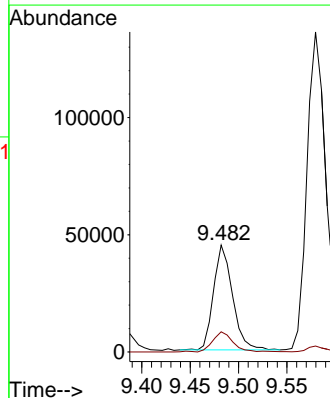
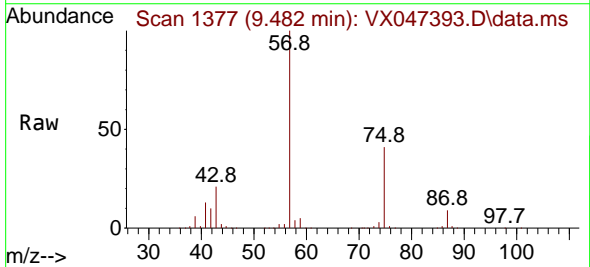
Instrument : MSVOA\_X  
 ClientSampleId : PB169277TB

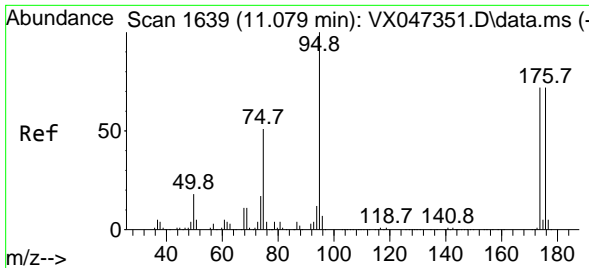
Tgt Ion: 76 Resp: 4547  
 Ion Ratio Lower Upper  
 76 100  
 78 0.0 26.2 39.2#



#59  
 2-Hexanone  
 Concen: 24.319 ug/l  
 RT: 9.482 min Scan# 1377  
 Delta R.T. 0.049 min  
 Lab File: VX047393.D  
 Acq: 18 Aug 2025 19:10

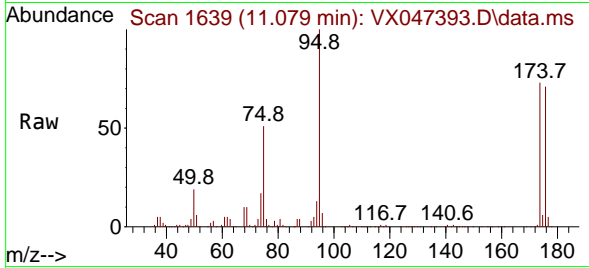
Tgt Ion: 43 Resp: 61081  
 Ion Ratio Lower Upper  
 43 100  
 58 21.1 26.9 80.7#



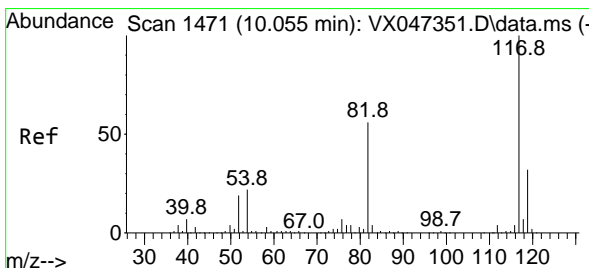
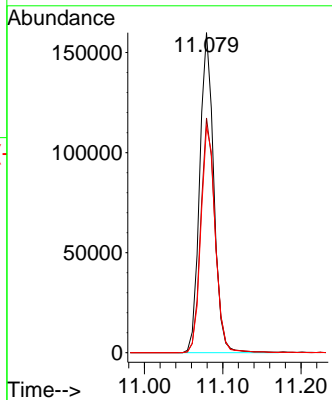
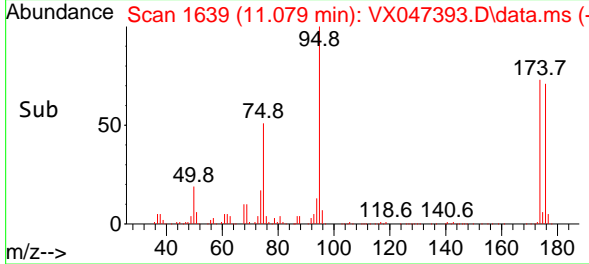


#62  
 4-Bromofluorobenzene  
 Concen: 56.315 ug/l  
 RT: 11.079 min Scan# 1639  
 Delta R.T. 0.000 min  
 Lab File: VX047393.D  
 Acq: 18 Aug 2025 19:10

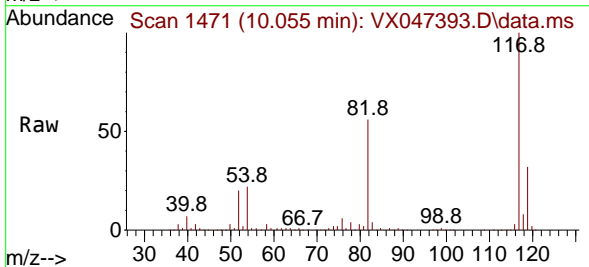
Instrument : MSVOA\_X  
 ClientSampleId : PB169277TB



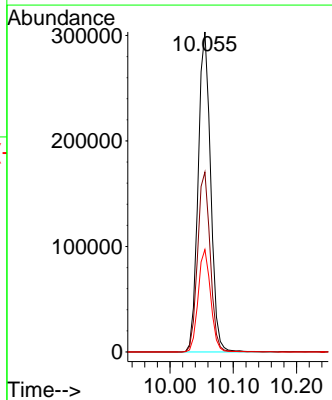
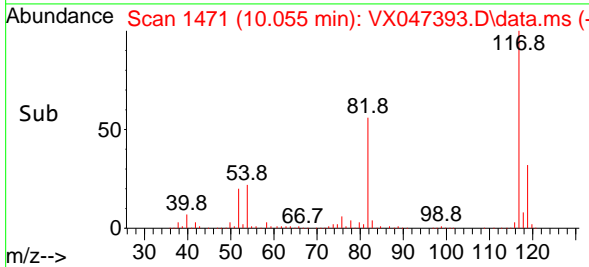
Tgt Ion: 95 Resp: 199077  
 Ion Ratio Lower Upper  
 95 100  
 174 74.5 0.0 148.0  
 176 72.6 0.0 145.4



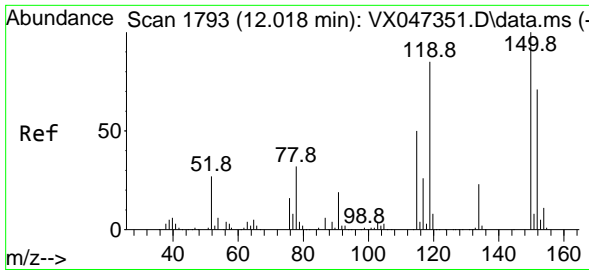
#63  
 Chlorobenzene-d5  
 Concen: 50.000 ug/l  
 RT: 10.055 min Scan# 1471  
 Delta R.T. 0.000 min  
 Lab File: VX047393.D  
 Acq: 18 Aug 2025 19:10



Tgt Ion: 117 Resp: 417657  
 Ion Ratio Lower Upper  
 117 100  
 82 56.2 45.0 67.4  
 119 32.0 25.8 38.8

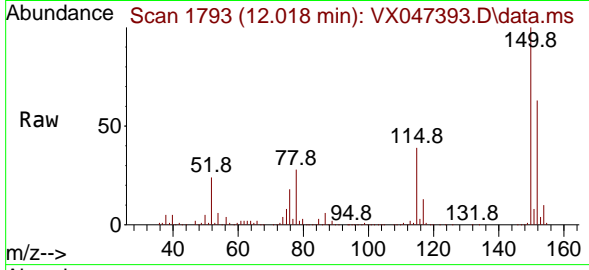




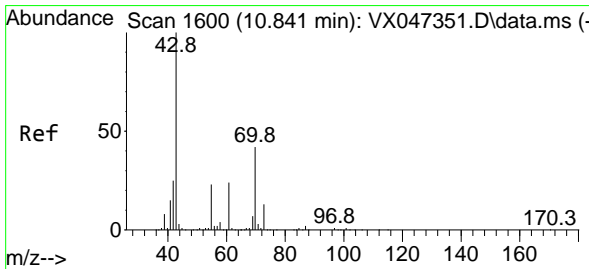
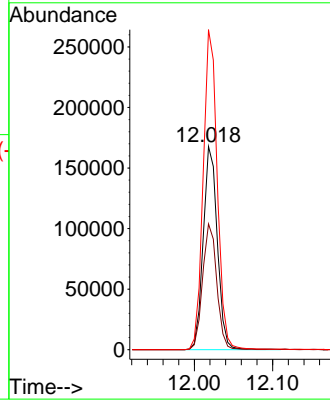
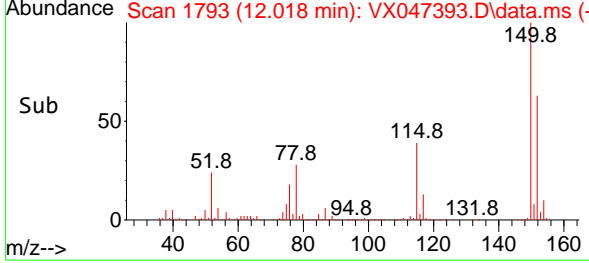


#72  
 1,4-Dichlorobenzene-d4  
 Concen: 50.000 ug/l  
 RT: 12.018 min Scan# 11  
 Delta R.T. 0.000 min  
 Lab File: VX047393.D  
 Acq: 18 Aug 2025 19:10

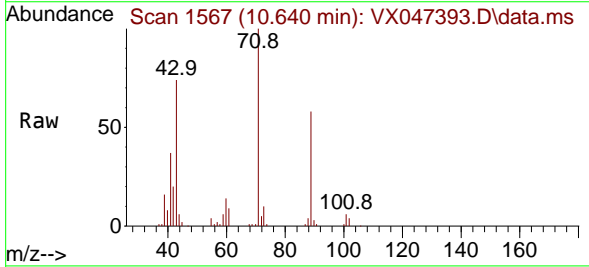
Instrument :  
 MSVOA\_X  
 ClientSampleId :  
 PB169277TB



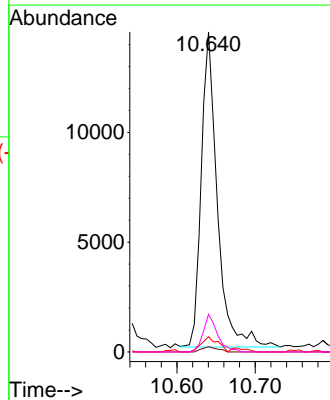
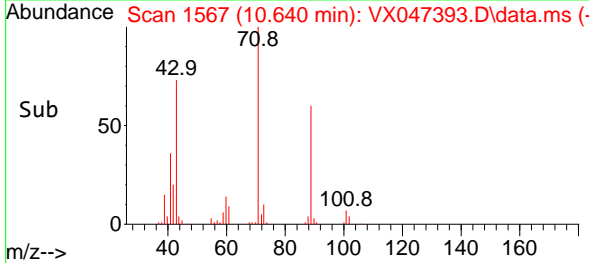
Tgt Ion:152 Resp: 209669  
 Ion Ratio Lower Upper  
 152 100  
 115 62.3 44.6 133.8  
 150 157.2 0.0 349.8

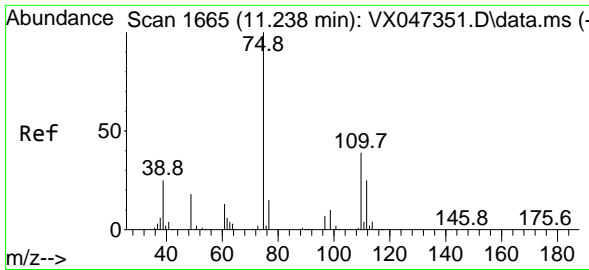


#74  
 N-amy1 acetate  
 Concen: 3.289 ug/l  
 RT: 10.640 min Scan# 1567  
 Delta R.T. -0.201 min  
 Lab File: VX047393.D  
 Acq: 18 Aug 2025 19:10



Tgt Ion: 43 Resp: 20495  
 Ion Ratio Lower Upper  
 43 100  
 70 1.6 33.1 49.7#  
 55 4.9 19.0 28.6#  
 61 10.6 19.0 28.6#

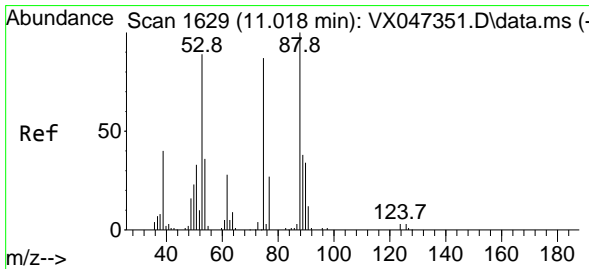
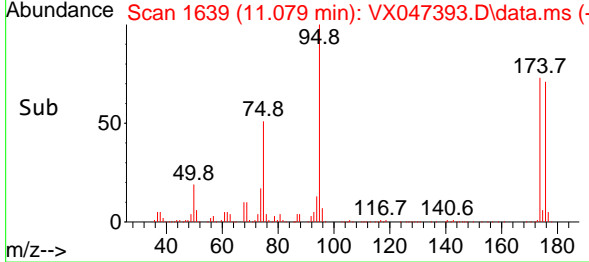
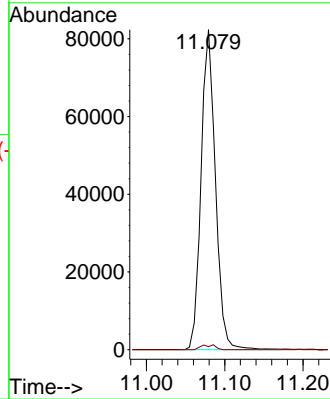
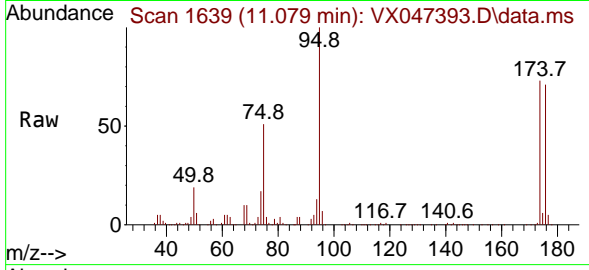




#76  
 1,2,3-Trichloropropane  
 Concen: 27.259 ug/l  
 RT: 11.079 min Scan# 1639  
 Delta R.T. -0.158 min  
 Lab File: VX047393.D  
 Acq: 18 Aug 2025 19:10

Instrument : MSVOA\_X  
 ClientSampleId : PB169277TB

Tgt Ion: 75 Resp: 104828  
 Ion Ratio Lower Upper  
 75 100  
 77 1.5 19.4 58.2#



#81  
 trans-1,4-Dichloro-2-butene  
 Concen: 107.718 ug/l  
 RT: 11.079 min Scan# 1639  
 Delta R.T. 0.061 min  
 Lab File: VX047393.D  
 Acq: 18 Aug 2025 19:10

Tgt Ion: 75 Resp: 104828  
 Ion Ratio Lower Upper  
 75 100  
 53 0.0 85.2 127.8#  
 89 0.0 36.7 55.1#

