

Data Path : Z:\voasrv\HPCHEM1\MSVOA_X\Data\VX081825\
 Data File : VX047395.D
 Acq On : 18 Aug 2025 19:52
 Operator : JC/MD
 Sample : Q2875-02
 Misc : 5.0mL/MSVOA_X/WATER
 ALS Vial : 26 Sample Multiplier: 1

Instrument :
 MSVOA_X
 ClientSampleId :
 SAND-BLAST-B

Quant Time: Aug 19 01:49:47 2025
 Quant Method : Z:\voasrv\HPCHEM1\MSVOA_X\Method\82X081525W.M
 Quant Title : SW846 8260
 QLast Update : Mon Aug 18 04:18:28 2025
 Response via : Initial Calibration

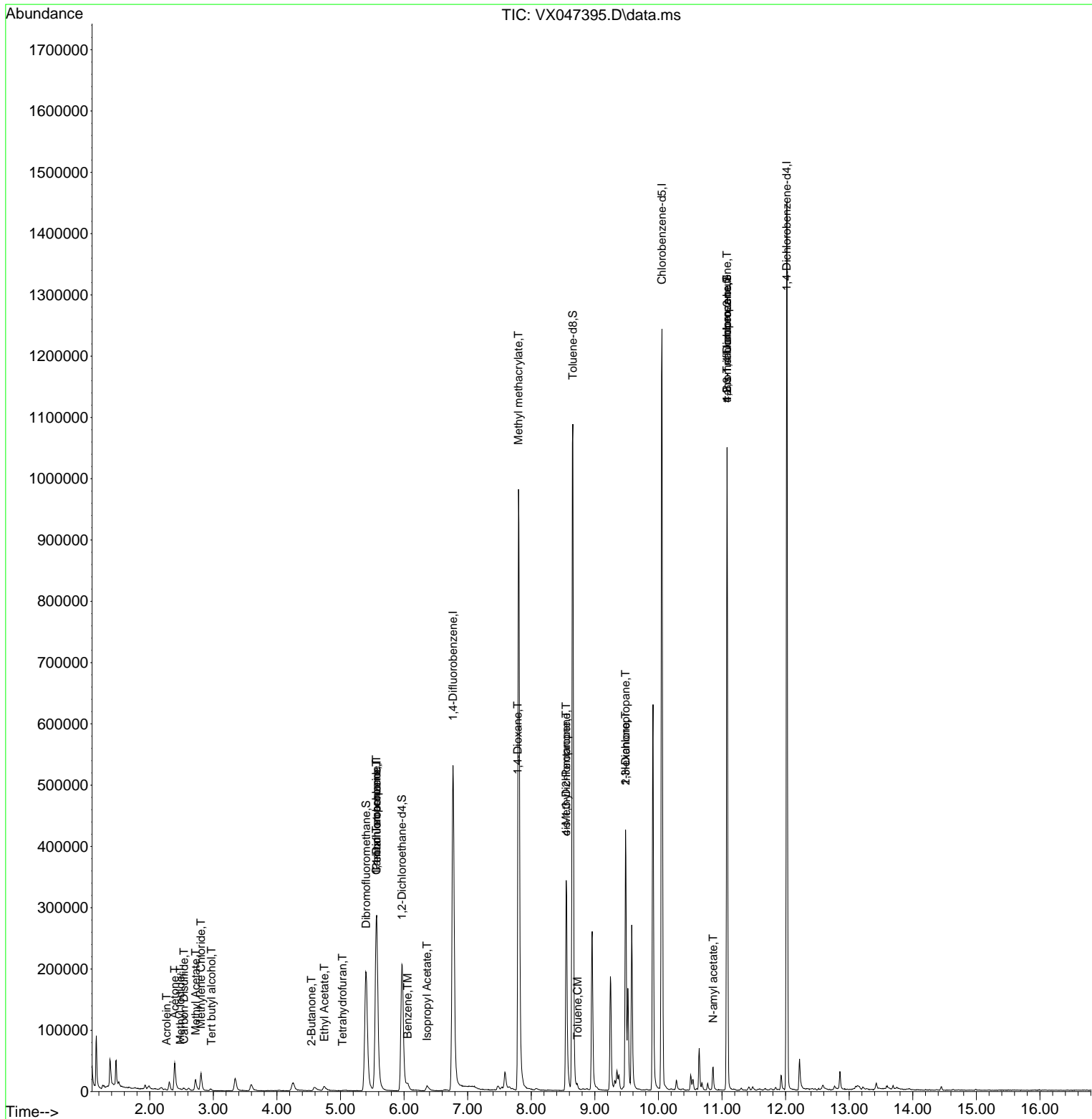
Compound	R.T.	QIon	Response	Conc	Units	Dev(Min)
Internal Standards						
1) Pentafluorobenzene	5.568	168	284720	50.000	ug/l	0.00
34) 1,4-Difluorobenzene	6.769	114	560938	50.000	ug/l	0.00
63) Chlorobenzene-d5	10.055	117	556677	50.000	ug/l	0.00
72) 1,4-Dichlorobenzene-d4	12.018	152	281858	50.000	ug/l	0.00
System Monitoring Compounds						
33) 1,2-Dichloroethane-d4	5.964	65	221119	55.491	ug/l	0.00
Spiked Amount	50.000	Range 78 - 117	Recovery	=	110.980%	
35) Dibromofluoromethane	5.404	113	185356	50.914	ug/l	0.00
Spiked Amount	50.000	Range 75 - 124	Recovery	=	101.820%	
50) Toluene-d8	8.653	98	660334	50.747	ug/l	0.00
Spiked Amount	50.000	Range 92 - 112	Recovery	=	101.500%	
62) 4-Bromofluorobenzene	11.079	95	272548	56.760	ug/l	0.00
Spiked Amount	50.000	Range 83 - 123	Recovery	=	113.520%	
Target Compounds						
						Qvalue
10) Methyl Iodide	2.483	142	1772	0.294	ug/l	89
11) Tert butyl alcohol	2.971	59	1303	3.759	ug/l #	72
13) Acrolein	2.264	56	748	1.022	ug/l #	15
16) Acetone	2.392	43	62470	41.708	ug/l	96
17) Carbon Disulfide	2.538	76	4774	0.441	ug/l #	94
18) Methyl Acetate	2.721	43	25059	6.456	ug/l	100
20) Methylene Chloride	2.806	84	13087	3.300	ug/l	97
25) 2-Butanone	4.544	43	784	0.400	ug/l #	50
29) Tetrahydrofuran	5.032	42	256	0.202	ug/l #	49
36) 1,1-Dichloropropene	5.562	75	24297	4.228	ug/l #	51
37) Ethyl Acetate	4.745	43	15684	2.629	ug/l	98
38) Carbon Tetrachloride	5.562	117	30769	4.899	ug/l #	15
40) Benzene	6.056	78	11430	0.664	ug/l #	88
43) Isopropyl Acetate	6.361	43	9761	1.139	ug/l	96
48) Methyl methacrylate	7.799	41	94429	21.226	ug/l #	44
49) 1,4-Dioxane	7.787	88	86	1.989	ug/l #	1
51) 4-Methyl-2-Pentanone	8.549	43	126488	25.645	ug/l #	50
52) Toluene	8.726	92	2139	0.201	ug/l	94
54) cis-1,3-Dichloropropene	8.549	75	57052	8.905	ug/l #	67
57) 1,3-Dichloropropane	9.482	76	3876	0.564	ug/l #	42
59) 2-Hexanone	9.482	43	56667	16.610	ug/l #	55
74) N-amyl acetate	10.860	43	6156	0.735	ug/l #	5
76) 1,2,3-Trichloropropane	11.079	75	141420	27.356	ug/l #	39
81) trans-1,4-Dichloro-2-b...	11.079	75	141420	108.072	ug/l #	7

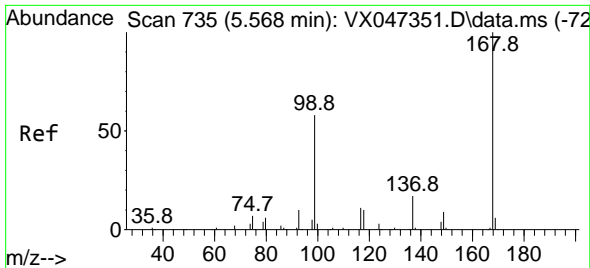
(#) = qualifier out of range (m) = manual integration (+) = signals summed

Data Path : Z:\voasrv\HPCHEM1\MSVOA_X\Data\VX081825\
 Data File : VX047395.D
 Acq On : 18 Aug 2025 19:52
 Operator : JC/MD
 Sample : Q2875-02
 Misc : 5.0mL/MSVOA_X/WATER
 ALS Vial : 26 Sample Multiplier: 1

Instrument :
 MSVOA_X
 ClientSampleId :
 SAND-BLAST-B

Quant Time: Aug 19 01:49:47 2025
 Quant Method : Z:\voasrv\HPCHEM1\MSVOA_X\Method\82X081525W.M
 Quant Title : SW846 8260
 QLast Update : Mon Aug 18 04:18:28 2025
 Response via : Initial Calibration

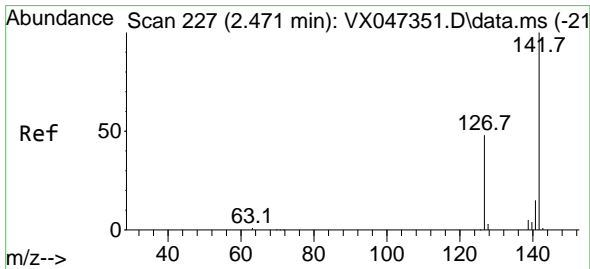
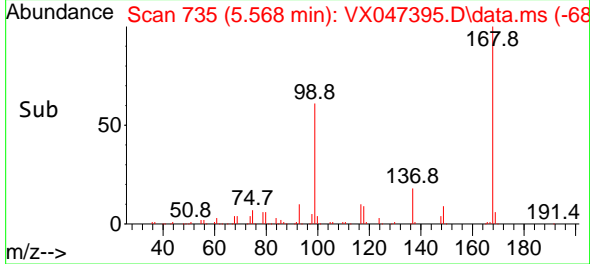
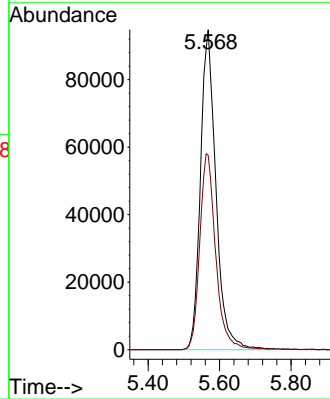
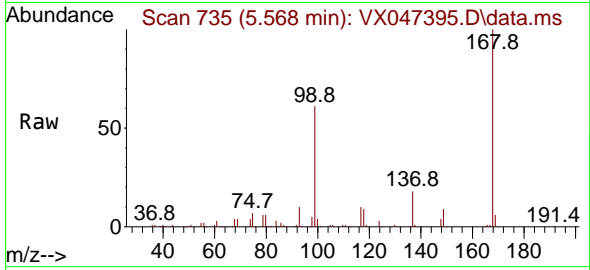




#1
 Pentafluorobenzene
 Concen: 50.000 ug/l
 RT: 5.568 min Scan# 71
 Delta R.T. 0.000 min
 Lab File: VX047395.D
 Acq: 18 Aug 2025 19:52

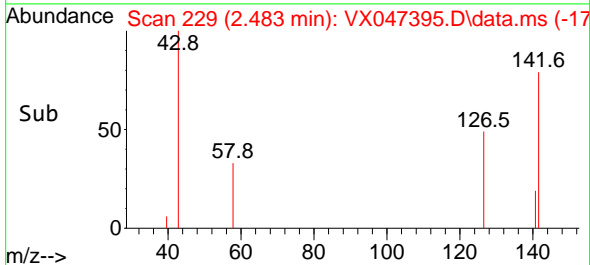
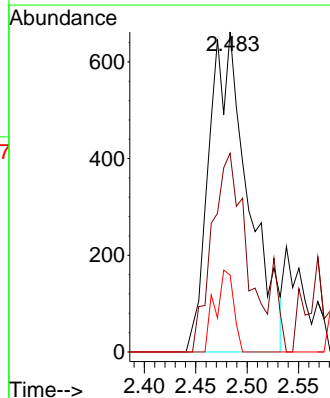
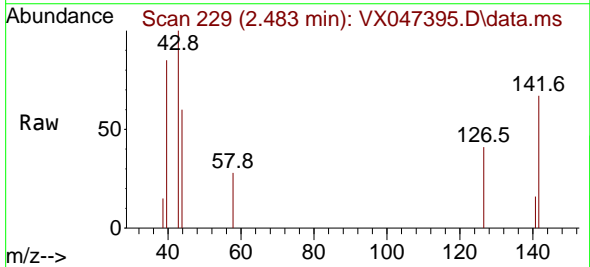
Instrument :
 MSVOA_X
 ClientSampleId :
 SAND-BLAST-B

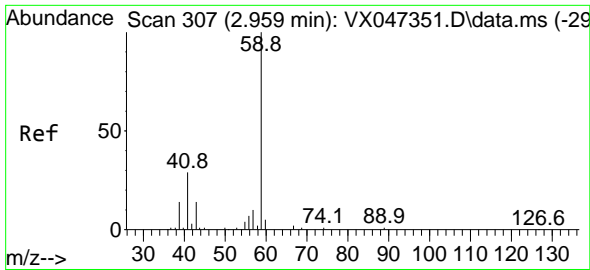
Tgt Ion:168 Resp: 284720
 Ion Ratio Lower Upper
 168 100
 99 60.7 47.9 71.9



#10
 Methyl Iodide
 Concen: 0.294 ug/l
 RT: 2.483 min Scan# 229
 Delta R.T. 0.012 min
 Lab File: VX047395.D
 Acq: 18 Aug 2025 19:52

Tgt Ion:142 Resp: 1772
 Ion Ratio Lower Upper
 142 100
 127 53.4 36.1 54.1
 141 11.9 11.1 16.7

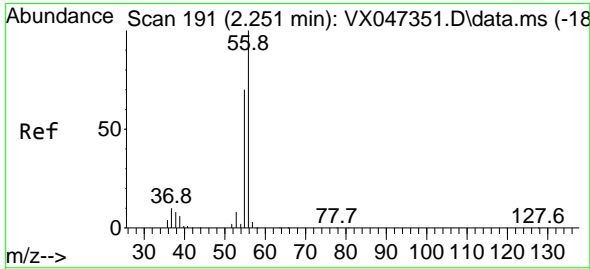
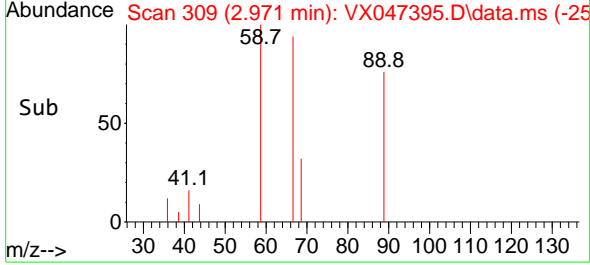
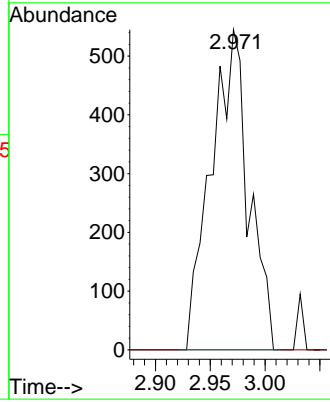
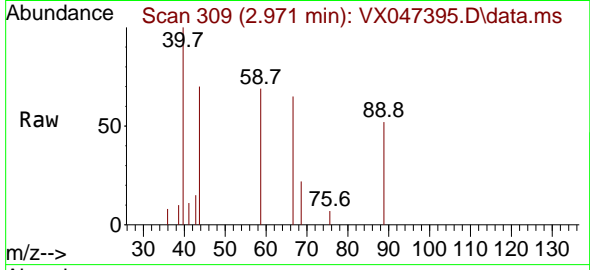




#11
 Tert butyl alcohol
 Concen: 3.759 ug/l
 RT: 2.971 min Scan# 309
 Delta R.T. 0.012 min
 Lab File: VX047395.D
 Acq: 18 Aug 2025 19:52

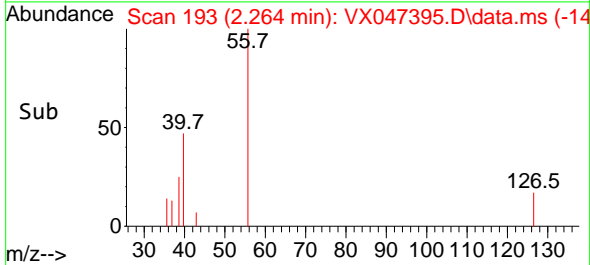
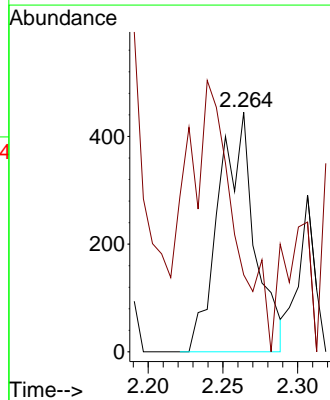
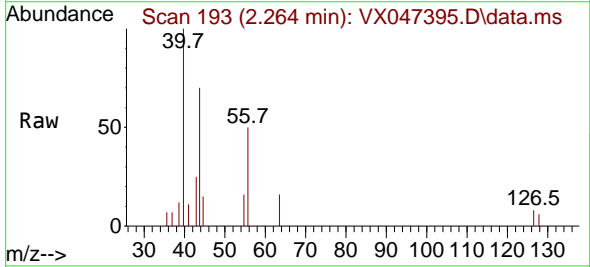
Instrument : MSVOA_X
 ClientSampleId : SAND-BLAST-B

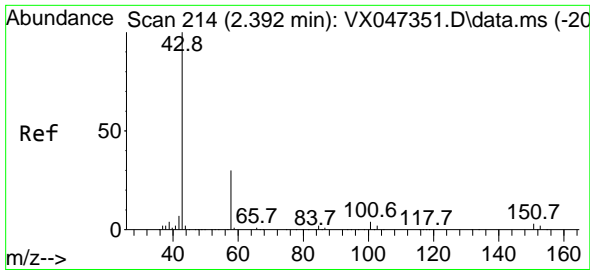
Tgt Ion: 59 Resp: 1303
 Ion Ratio Lower Upper
 59 100
 57 0.0 8.3 12.5#



#13
 Acrolein
 Concen: 1.022 ug/l
 RT: 2.264 min Scan# 193
 Delta R.T. 0.012 min
 Lab File: VX047395.D
 Acq: 18 Aug 2025 19:52

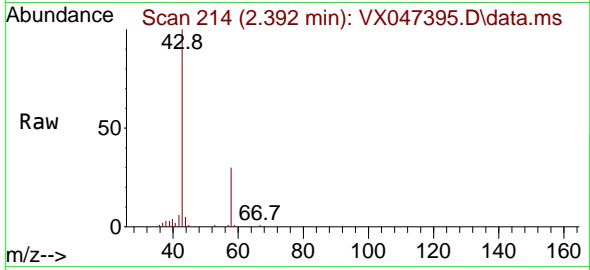
Tgt Ion: 56 Resp: 748
 Ion Ratio Lower Upper
 56 100
 55 0.0 55.5 83.3#



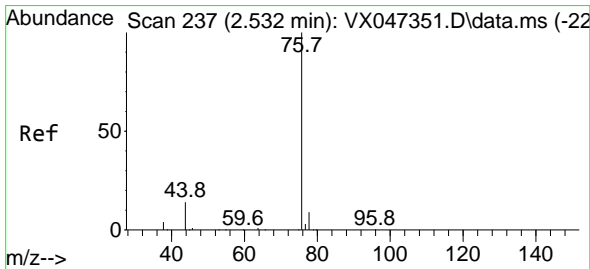
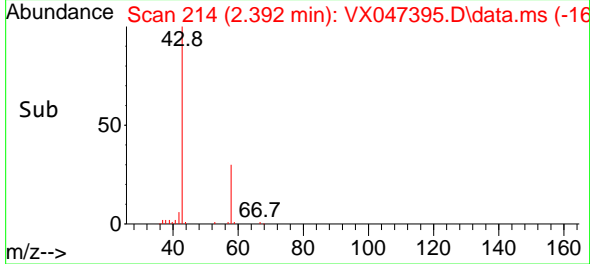
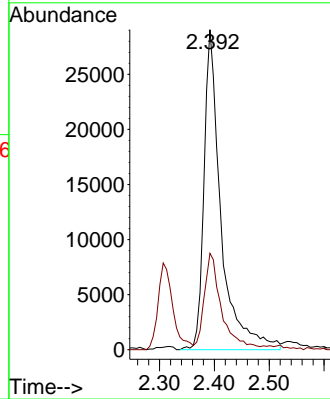


#16
 Acetone
 Concen: 41.708 ug/l
 RT: 2.392 min Scan# 216
 Delta R.T. 0.000 min
 Lab File: VX047395.D
 Acq: 18 Aug 2025 19:52

Instrument : MSVOA_X
 ClientSampleId : SAND-BLAST-B

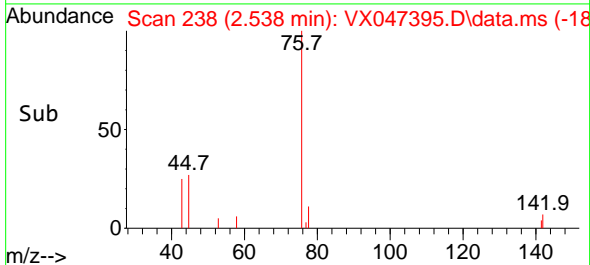
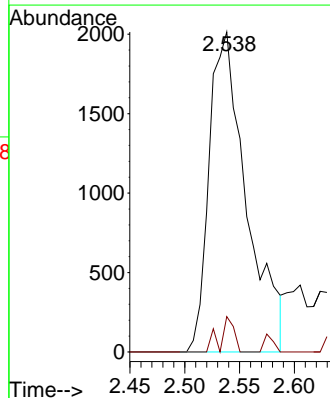
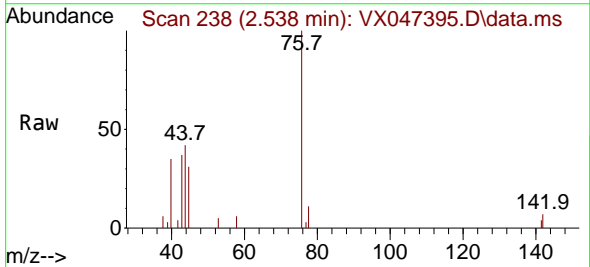


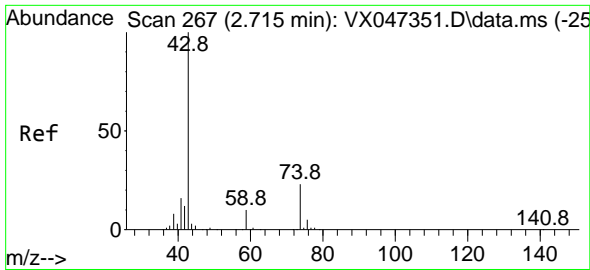
Tgt Ion: 43 Resp: 62470
 Ion Ratio Lower Upper
 43 100
 58 28.7 24.8 37.2



#17
 Carbon Disulfide
 Concen: 0.441 ug/l
 RT: 2.538 min Scan# 238
 Delta R.T. 0.006 min
 Lab File: VX047395.D
 Acq: 18 Aug 2025 19:52

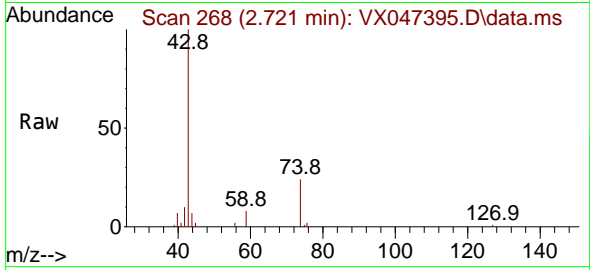
Tgt Ion: 76 Resp: 4774
 Ion Ratio Lower Upper
 76 100
 78 11.1 7.2 10.8#



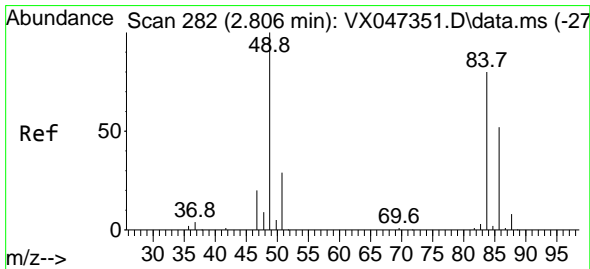
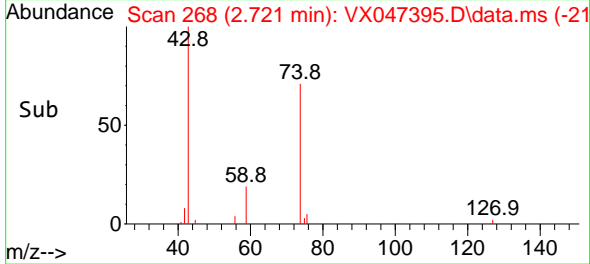
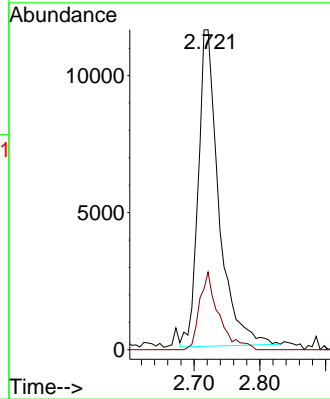


#18
Methyl Acetate
Concen: 6.456 ug/l
RT: 2.721 min Scan# 20
Delta R.T. 0.006 min
Lab File: VX047395.D
Acq: 18 Aug 2025 19:52

Instrument :
MSVOA_X
ClientSampleId :
SAND-BLAST-B

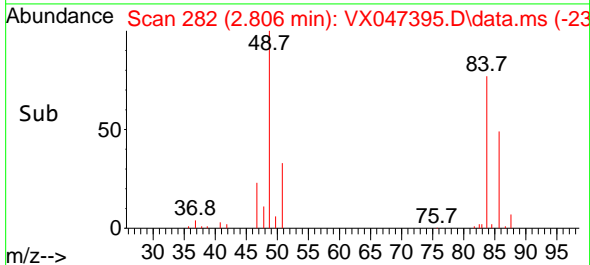
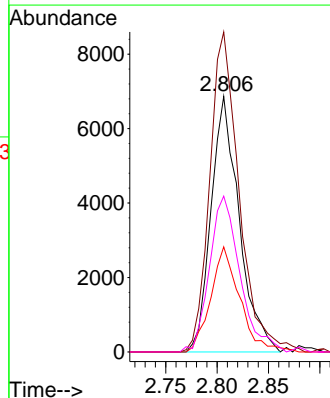
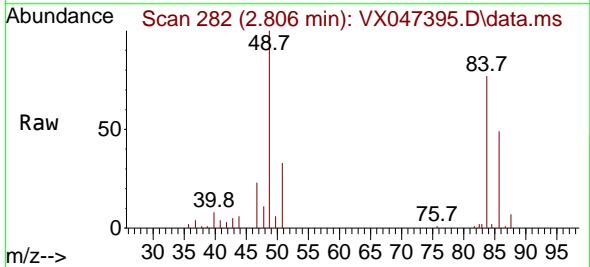


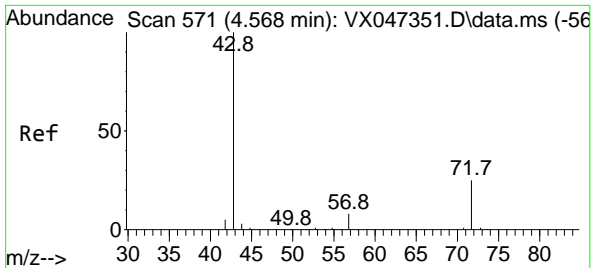
Tgt Ion: 43 Resp: 25059
Ion Ratio Lower Upper
43 100
74 22.9 18.4 27.6



#20
Methylene Chloride
Concen: 3.300 ug/l
RT: 2.806 min Scan# 282
Delta R.T. 0.000 min
Lab File: VX047395.D
Acq: 18 Aug 2025 19:52

Tgt Ion: 84 Resp: 13087
Ion Ratio Lower Upper
84 100
49 125.2 100.1 150.1
51 41.1 29.5 44.3
86 61.0 51.8 77.8

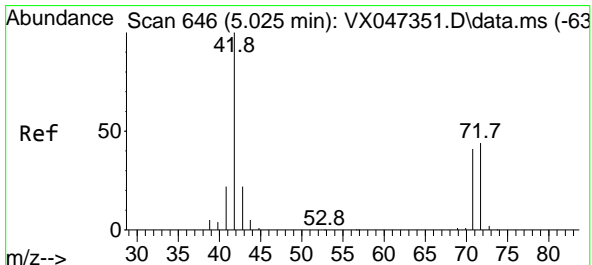
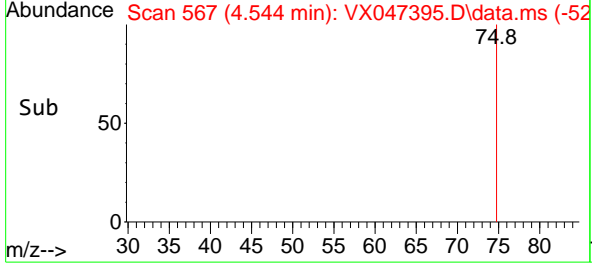
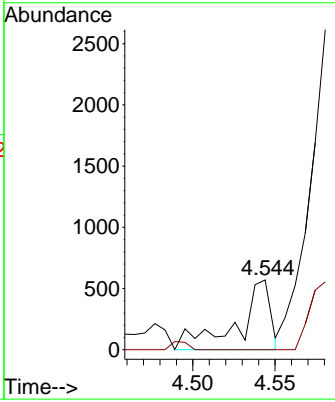
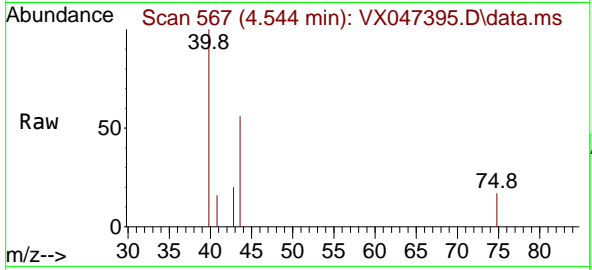




#25
 2-Butanone
 Concen: 0.400 ug/l
 RT: 4.544 min Scan# 50
 Delta R.T. -0.024 min
 Lab File: VX047395.D
 Acq: 18 Aug 2025 19:52

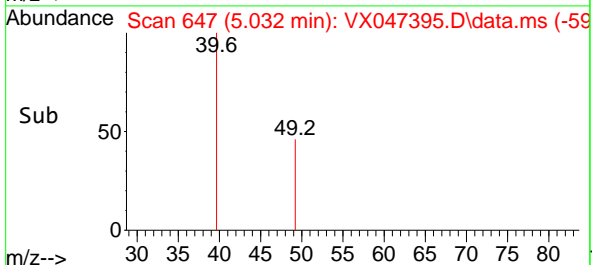
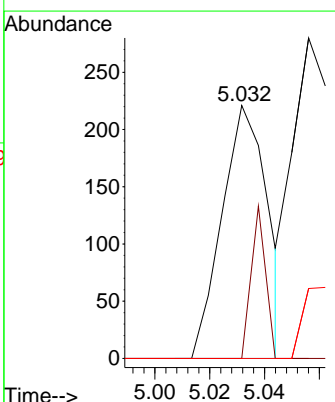
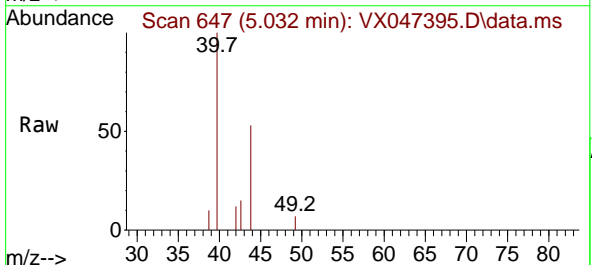
Instrument : MSVOA_X
 ClientSampleId : SAND-BLAST-B

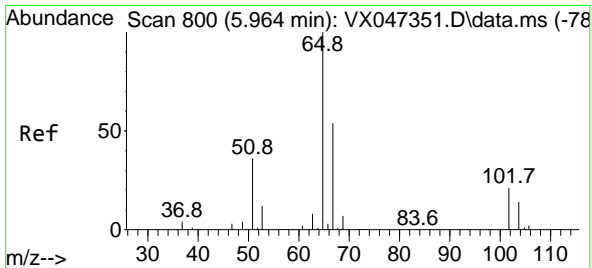
Tgt Ion: 43 Resp: 784
 Ion Ratio Lower Upper
 43 100
 72 0.0 19.8 29.8#



#29
 Tetrahydrofuran
 Concen: 0.202 ug/l
 RT: 5.032 min Scan# 647
 Delta R.T. 0.006 min
 Lab File: VX047395.D
 Acq: 18 Aug 2025 19:52

Tgt Ion: 42 Resp: 256
 Ion Ratio Lower Upper
 42 100
 72 19.1 34.6 51.8#
 71 0.0 32.6 49.0#

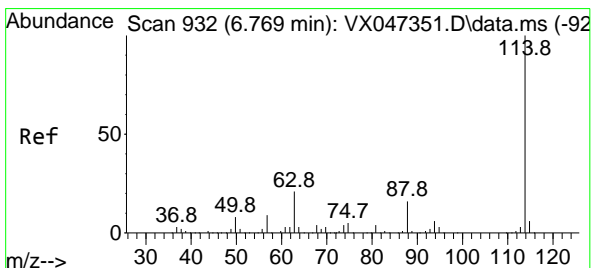
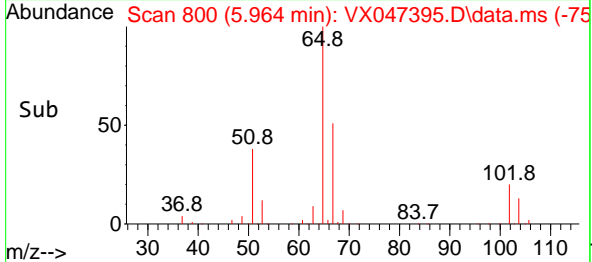
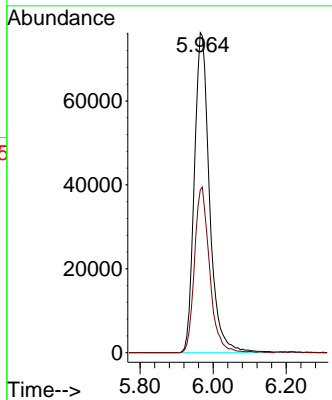
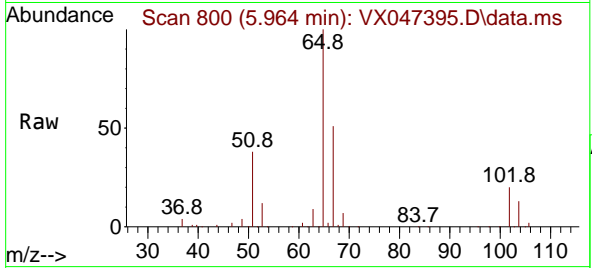




#33
 1,2-Dichloroethane-d4
 Concen: 55.491 ug/l
 RT: 5.964 min Scan# 800
 Delta R.T. 0.000 min
 Lab File: VX047395.D
 Acq: 18 Aug 2025 19:52

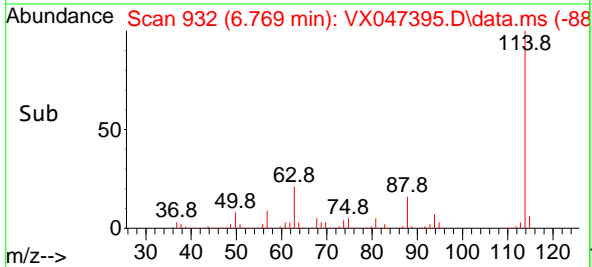
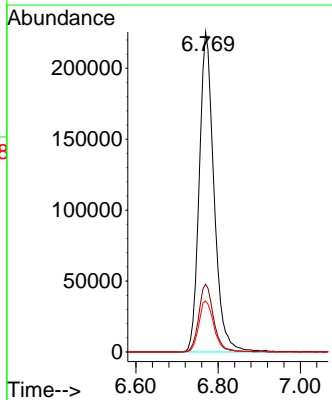
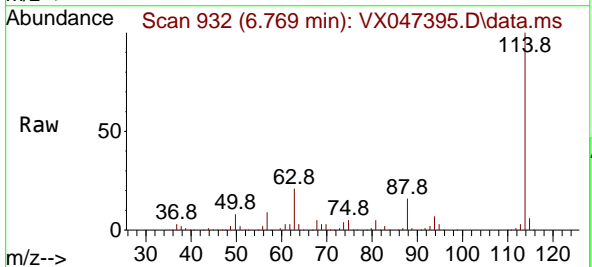
Instrument : MSVOA_X
 ClientSampleId : SAND-BLAST-B

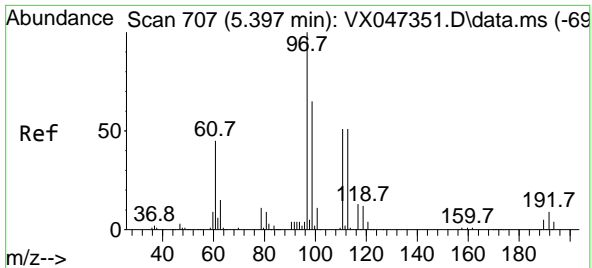
Tgt Ion: 65 Resp: 221119
 Ion Ratio Lower Upper
 65 100
 67 51.2 0.0 106.0



#34
 1,4-Difluorobenzene
 Concen: 50.000 ug/l
 RT: 6.769 min Scan# 932
 Delta R.T. 0.000 min
 Lab File: VX047395.D
 Acq: 18 Aug 2025 19:52

Tgt Ion: 114 Resp: 560938
 Ion Ratio Lower Upper
 114 100
 63 21.2 0.0 42.4
 88 15.9 0.0 33.0



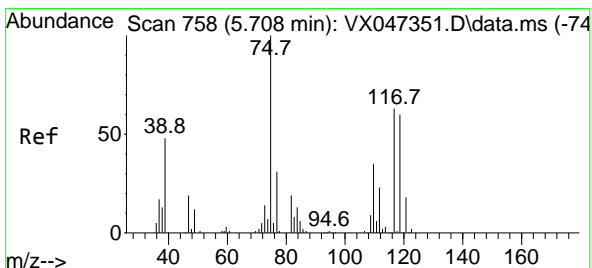
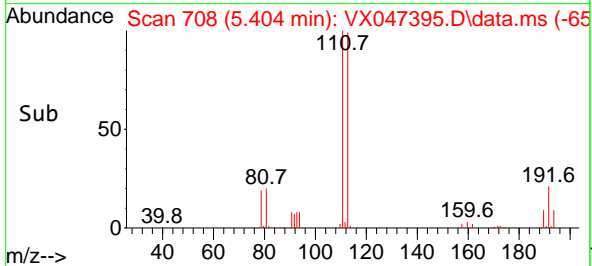
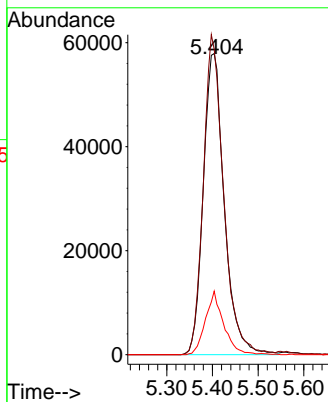
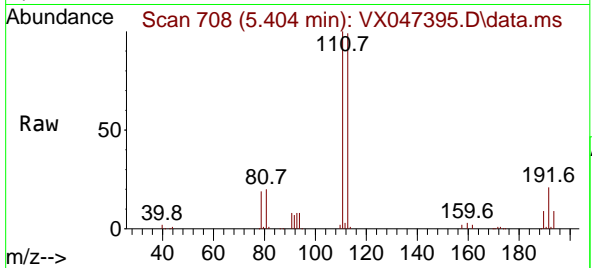


#35
 Dibromofluoromethane
 Concen: 50.914 ug/l
 RT: 5.404 min Scan# 707
 Delta R.T. 0.006 min
 Lab File: VX047395.D
 Acq: 18 Aug 2025 19:52

Instrument :
 MSVOA_X
 ClientSampleId :
 SAND-BLAST-B

Tgt Ion:113 Resp: 185356

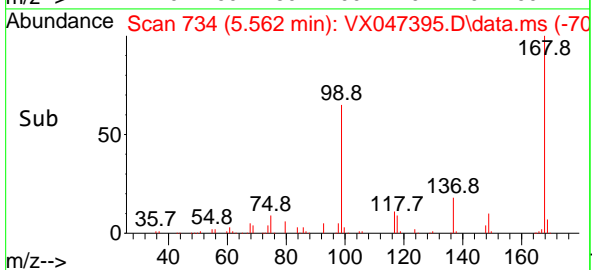
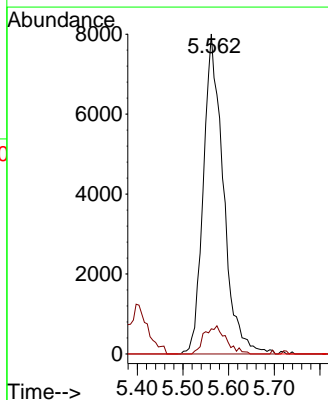
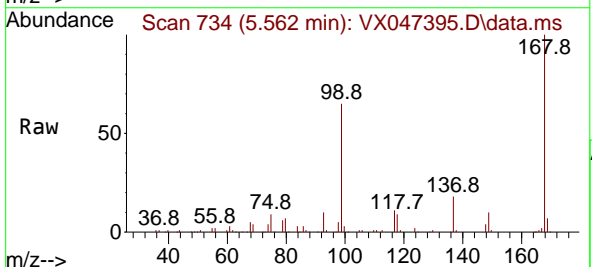
Ion	Ratio	Lower	Upper
113	100		
111	102.3	81.4	122.2
192	18.3	14.1	21.1

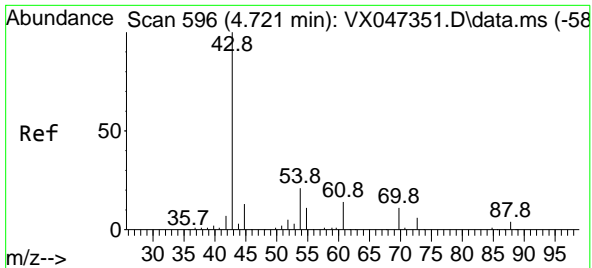


#36
 1,1-Dichloropropene
 Concen: 4.228 ug/l
 RT: 5.562 min Scan# 734
 Delta R.T. -0.146 min
 Lab File: VX047395.D
 Acq: 18 Aug 2025 19:52

Tgt Ion: 75 Resp: 24297

Ion	Ratio	Lower	Upper
75	100		
110	9.7	17.4	52.2#
77	0.0	24.4	36.6#

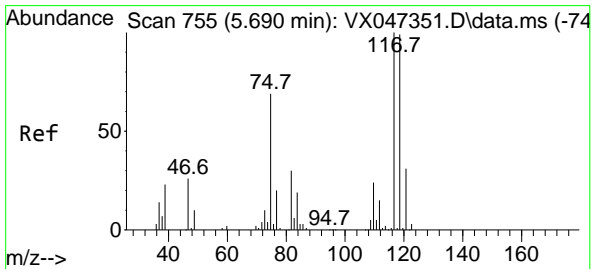
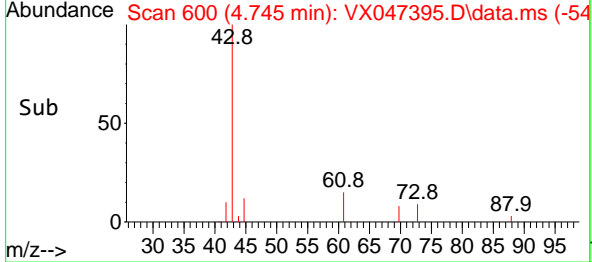
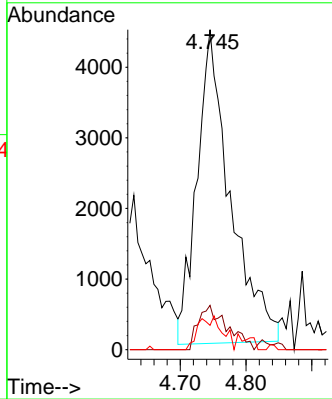
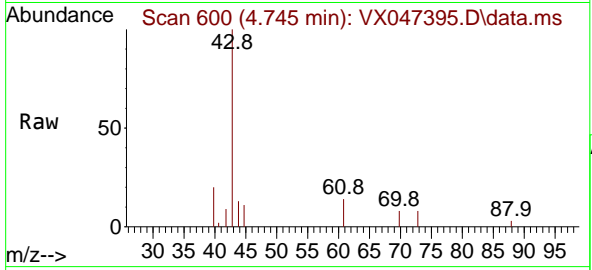




#37
 Ethyl Acetate
 Concen: 2.629 ug/l
 RT: 4.745 min Scan# 600
 Delta R.T. 0.025 min
 Lab File: VX047395.D
 Acq: 18 Aug 2025 19:52

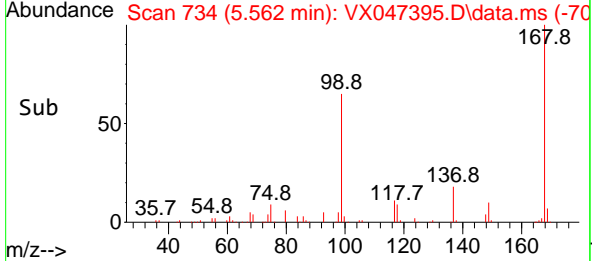
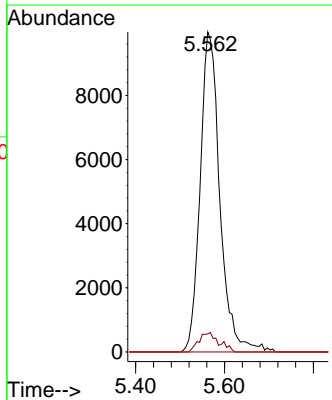
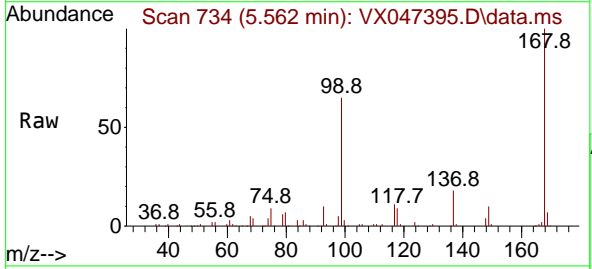
Instrument : MSVOA_X
 ClientSampleId : SAND-BLAST-B

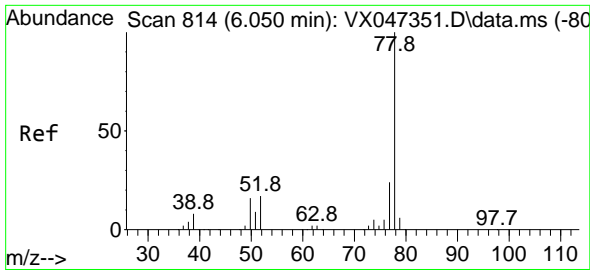
Tgt Ion	Resp	Lower	Upper
43	15684		
43	100		
61	12.2	9.4	14.2
70	7.6	7.0	10.6



#38
 Carbon Tetrachloride
 Concen: 4.899 ug/l
 RT: 5.562 min Scan# 734
 Delta R.T. -0.128 min
 Lab File: VX047395.D
 Acq: 18 Aug 2025 19:52

Tgt Ion	Resp	Lower	Upper
117	30769		
117	100		
119	5.6	78.5	117.7#
121	0.0	24.7	37.1#

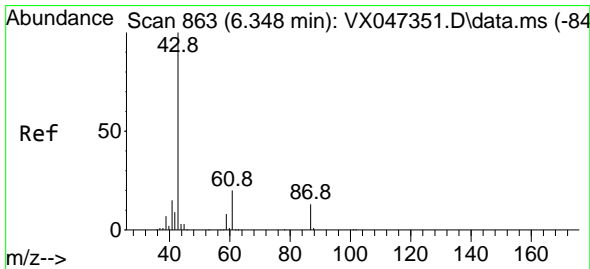
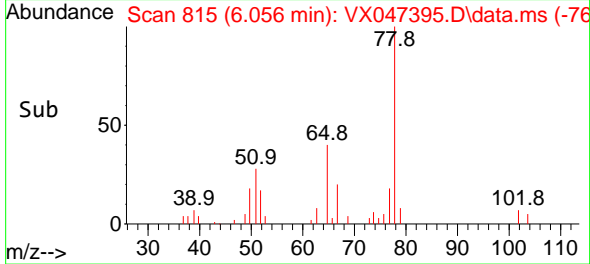
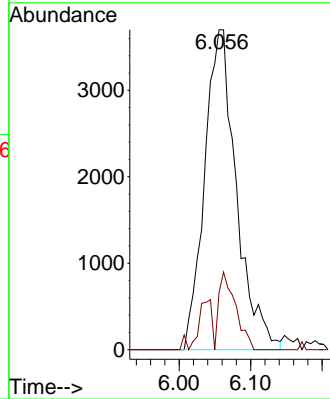
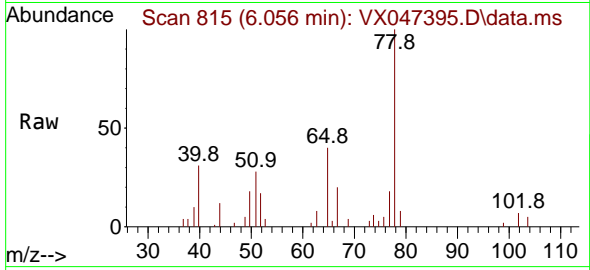




#40
Benzene
Concen: 0.664 ug/l
RT: 6.056 min Scan# 814
Delta R.T. 0.006 min
Lab File: VX047395.D
Acq: 18 Aug 2025 19:52

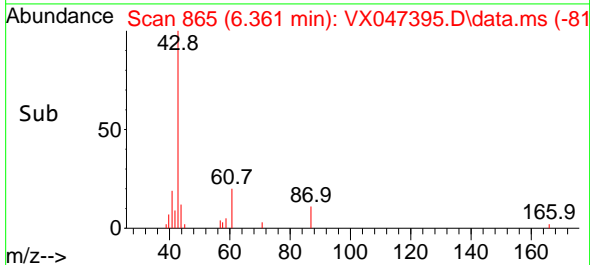
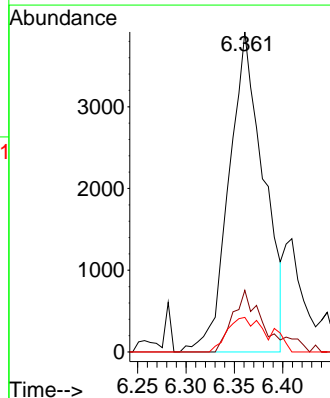
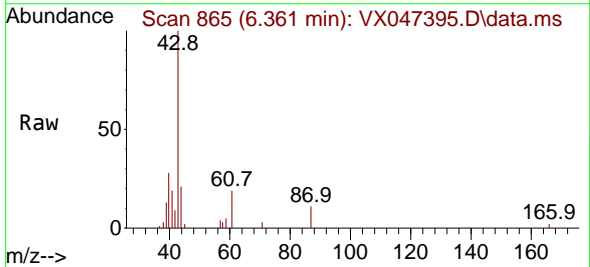
Instrument : MSVOA_X
ClientSampleId : SAND-BLAST-B

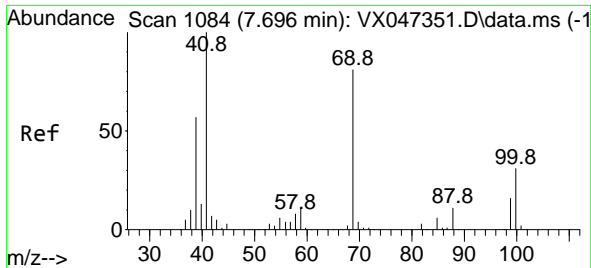
Tgt Ion: 78 Resp: 11430
Ion Ratio Lower Upper
78 100
77 17.9 19.0 28.4#



#43
Isopropyl Acetate
Concen: 1.139 ug/l
RT: 6.361 min Scan# 865
Delta R.T. 0.012 min
Lab File: VX047395.D
Acq: 18 Aug 2025 19:52

Tgt Ion: 43 Resp: 9761
Ion Ratio Lower Upper
43 100
61 18.1 15.4 23.0
87 10.4 10.2 15.4

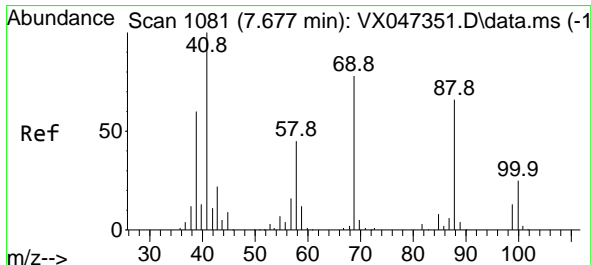
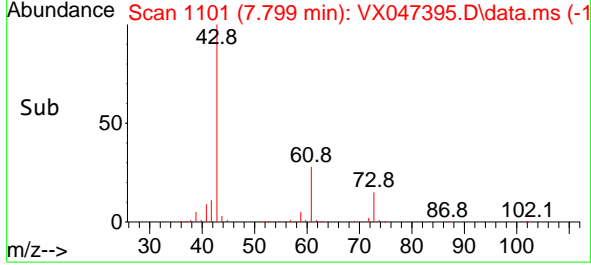
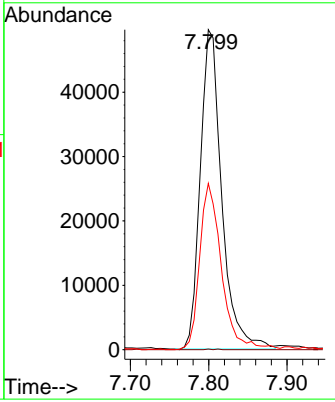
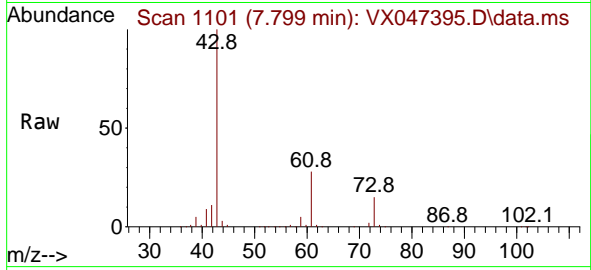




#48
 Methyl methacrylate
 Concen: 21.226 ug/l
 RT: 7.799 min Scan# 1101
 Delta R.T. 0.104 min
 Lab File: VX047395.D
 Acq: 18 Aug 2025 19:52

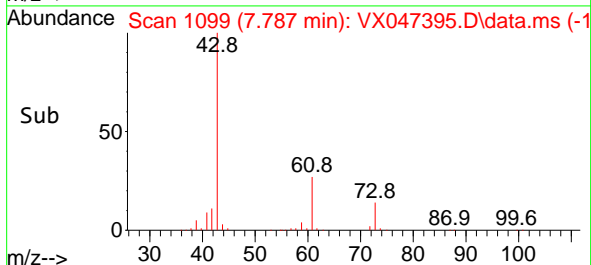
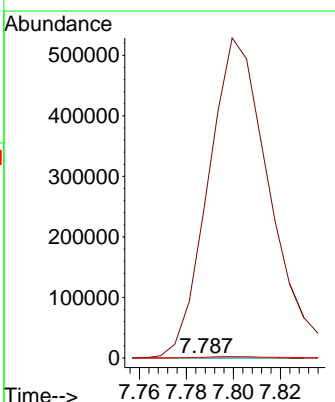
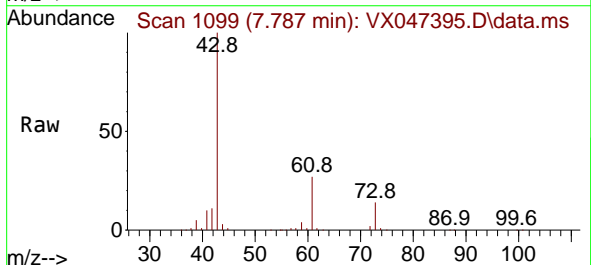
Instrument : MSVOA_X
 ClientSampleId : SAND-BLAST-B

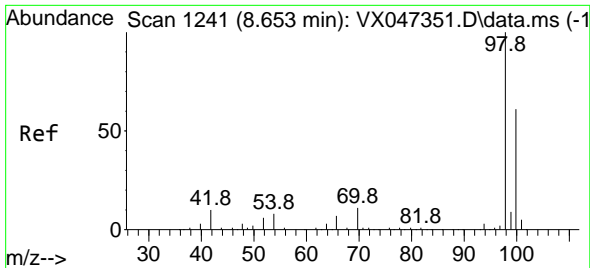
Tgt Ion: 41 Resp: 94429
 Ion Ratio Lower Upper
 41 100
 69 0.1 65.0 97.4#
 39 53.0 45.7 68.5



#49
 1,4-Dioxane
 Concen: 1.989 ug/l
 RT: 7.787 min Scan# 1099
 Delta R.T. 0.110 min
 Lab File: VX047395.D
 Acq: 18 Aug 2025 19:52

Tgt Ion: 88 Resp: 86
 Ion Ratio Lower Upper
 88 100
 43 1158803.5 32.4 48.6#
 58 5441.9 56.9 85.3#

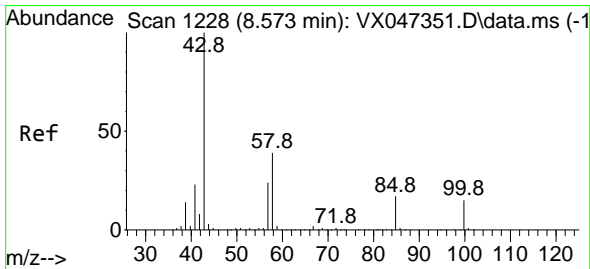
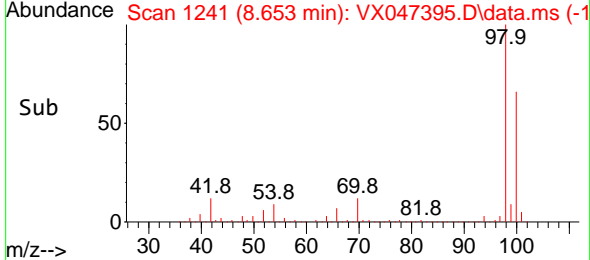
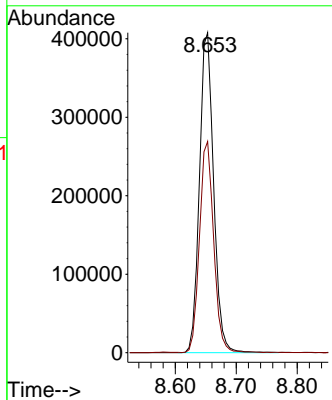
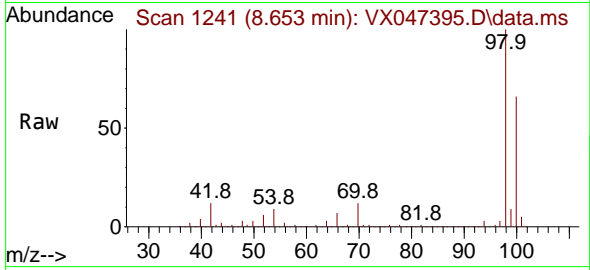




#50
 Toluene-d8
 Concen: 50.747 ug/l
 RT: 8.653 min Scan# 11
 Delta R.T. 0.000 min
 Lab File: VX047395.D
 Acq: 18 Aug 2025 19:52

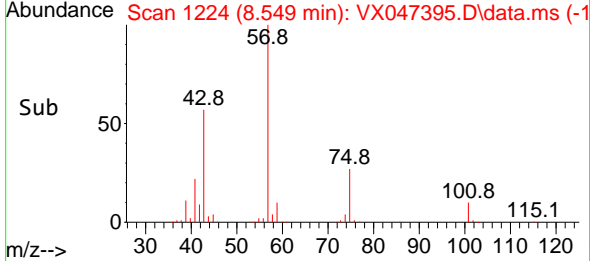
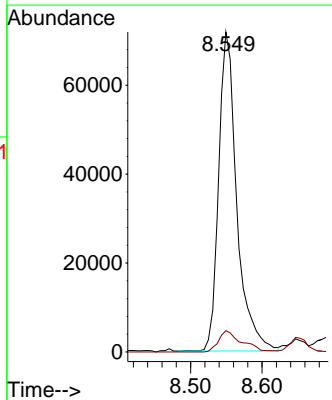
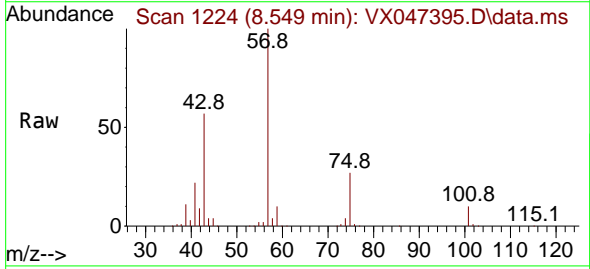
Instrument : MSVOA_X
 ClientSampleId : SAND-BLAST-B

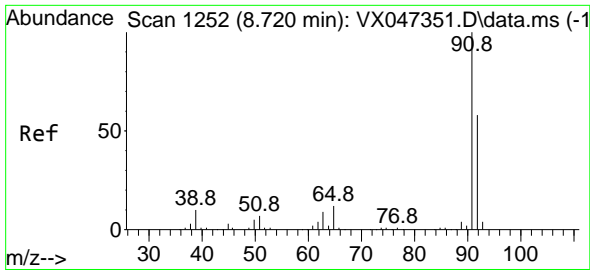
Tgt Ion: 98 Resp: 660334
 Ion Ratio Lower Upper
 98 100
 100 65.9 53.9 80.9



#51
 4-Methyl-2-Pentanone
 Concen: 25.645 ug/l
 RT: 8.549 min Scan# 1224
 Delta R.T. -0.024 min
 Lab File: VX047395.D
 Acq: 18 Aug 2025 19:52

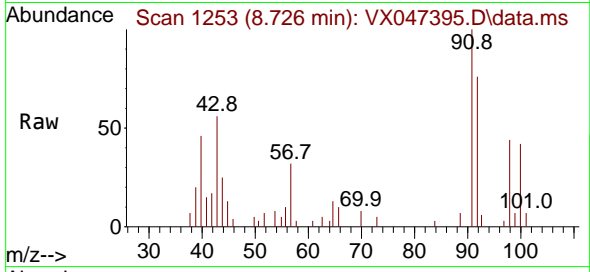
Tgt Ion: 43 Resp: 126488
 Ion Ratio Lower Upper
 43 100
 58 8.6 31.2 46.8#



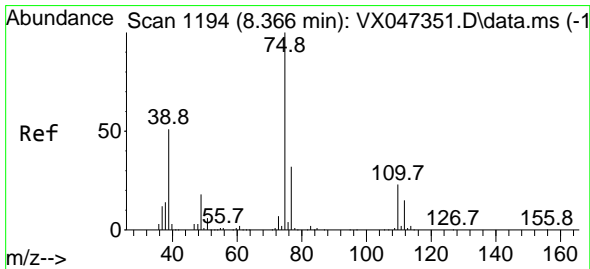
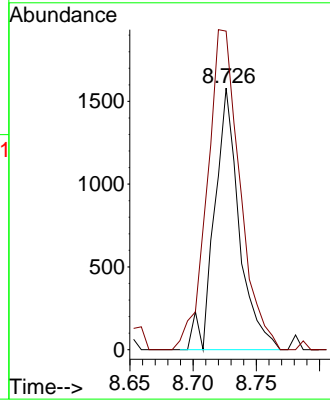
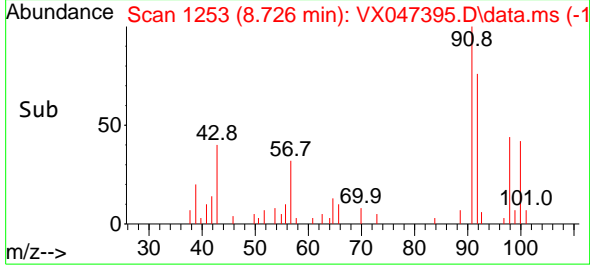


#52
 Toluene
 Concen: 0.201 ug/l
 RT: 8.726 min Scan# 1124
 Delta R.T. 0.006 min
 Lab File: VX047395.D
 Acq: 18 Aug 2025 19:52

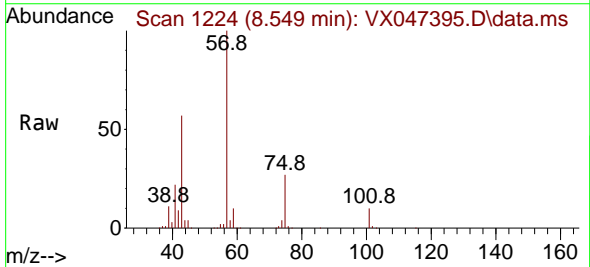
Instrument : MSVOA_X
 ClientSampleId : SAND-BLAST-B



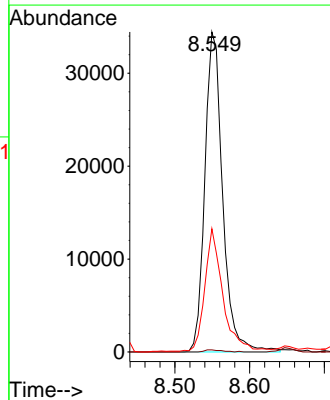
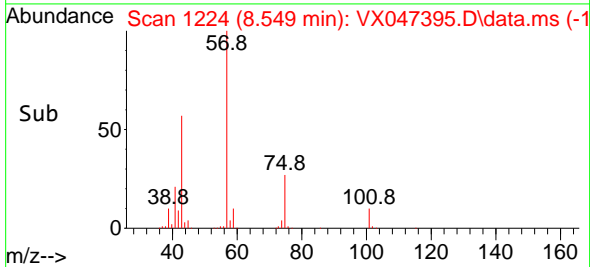
Tgt Ion: 92 Resp: 2139
 Ion Ratio Lower Upper
 92 100
 91 162.5 136.3 204.5

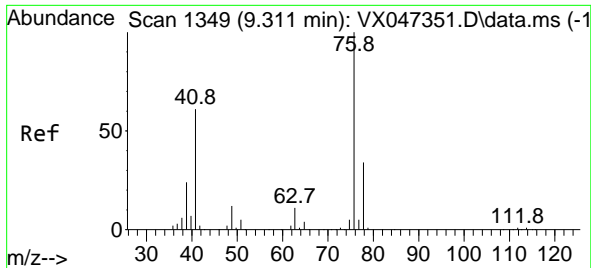


#54
 cis-1,3-Dichloropropene
 Concen: 8.905 ug/l
 RT: 8.549 min Scan# 1224
 Delta R.T. 0.183 min
 Lab File: VX047395.D
 Acq: 18 Aug 2025 19:52



Tgt Ion: 75 Resp: 57052
 Ion Ratio Lower Upper
 75 100
 77 0.6 25.6 38.4#
 39 38.2 40.9 61.3#

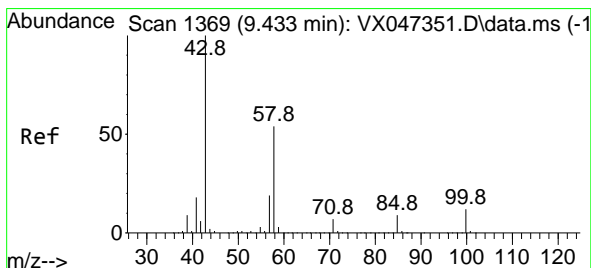
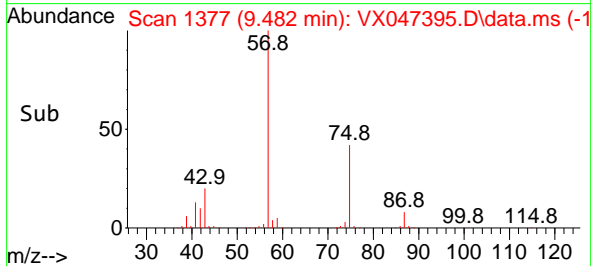
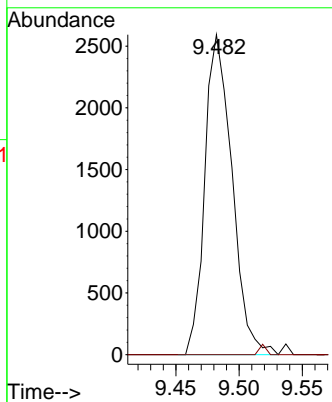
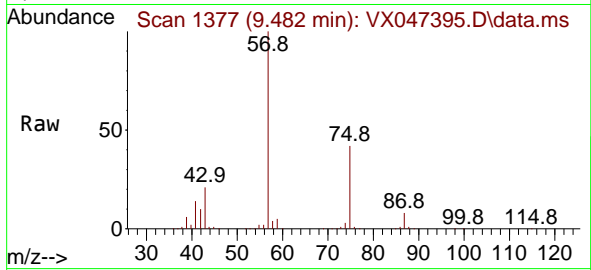




#57
 1,3-Dichloropropane
 Concen: 0.564 ug/l
 RT: 9.482 min Scan# 1377
 Delta R.T. 0.171 min
 Lab File: VX047395.D
 Acq: 18 Aug 2025 19:52

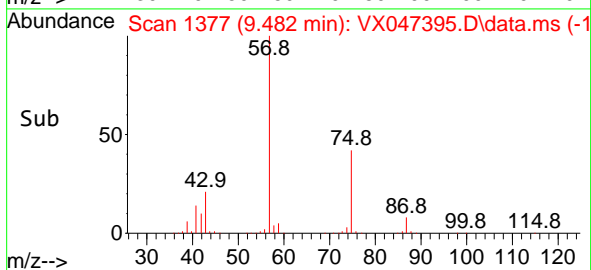
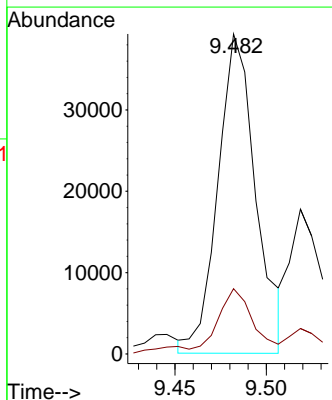
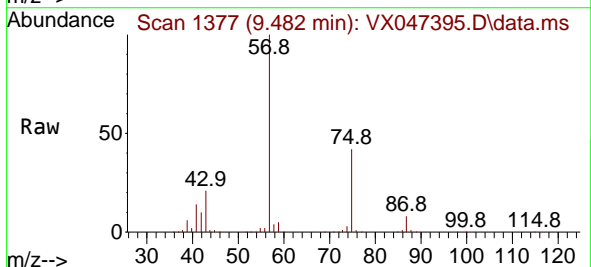
Instrument : MSVOA_X
 ClientSampleId : SAND-BLAST-B

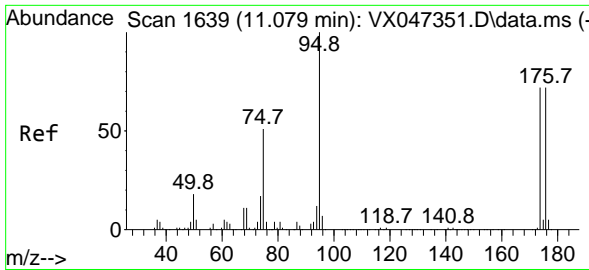
Tgt Ion: 76 Resp: 3876
 Ion Ratio Lower Upper
 76 100
 78 0.0 26.2 39.2#



#59
 2-Hexanone
 Concen: 16.610 ug/l
 RT: 9.482 min Scan# 1377
 Delta R.T. 0.049 min
 Lab File: VX047395.D
 Acq: 18 Aug 2025 19:52

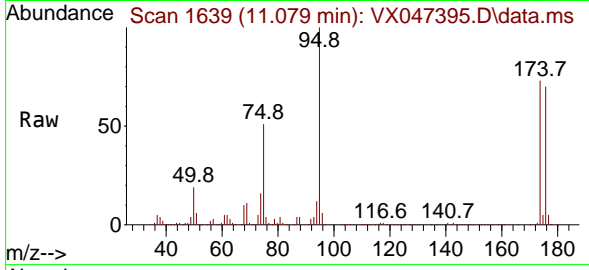
Tgt Ion: 43 Resp: 56667
 Ion Ratio Lower Upper
 43 100
 58 21.4 26.9 80.7#



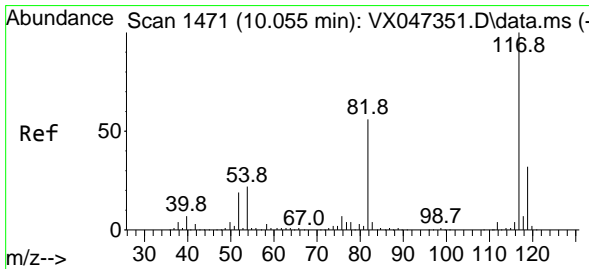
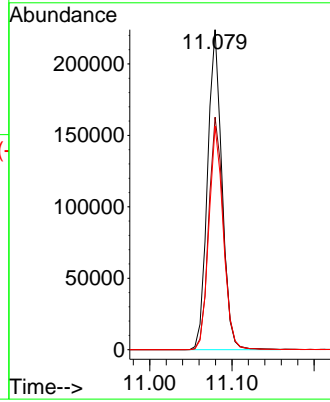
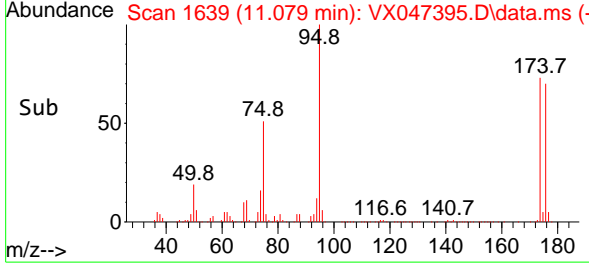


#62
 4-Bromofluorobenzene
 Concen: 56.760 ug/l
 RT: 11.079 min Scan# 1639
 Delta R.T. 0.000 min
 Lab File: VX047395.D
 Acq: 18 Aug 2025 19:52

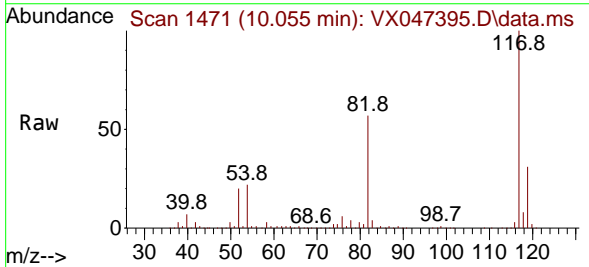
Instrument :
 MSVOA_X
 ClientSampleId :
 SAND-BLAST-B



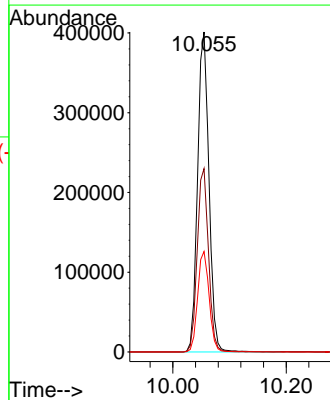
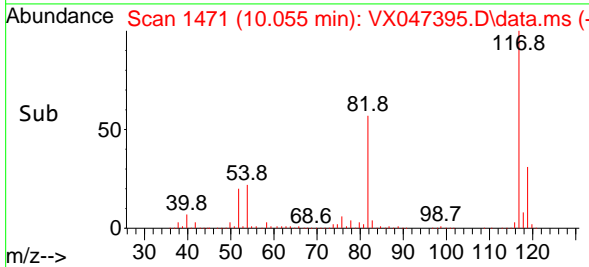
Tgt Ion: 95 Resp: 272548
 Ion Ratio Lower Upper
 95 100
 174 74.1 0.0 148.0
 176 70.0 0.0 145.4

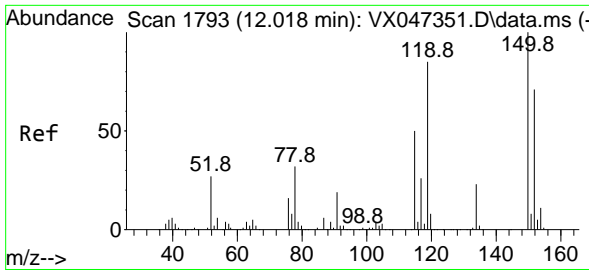


#63
 Chlorobenzene-d5
 Concen: 50.000 ug/l
 RT: 10.055 min Scan# 1471
 Delta R.T. 0.000 min
 Lab File: VX047395.D
 Acq: 18 Aug 2025 19:52



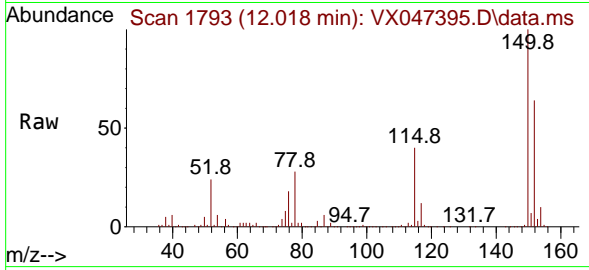
Tgt Ion: 117 Resp: 556677
 Ion Ratio Lower Upper
 117 100
 82 57.3 45.0 67.4
 119 31.4 25.8 38.8



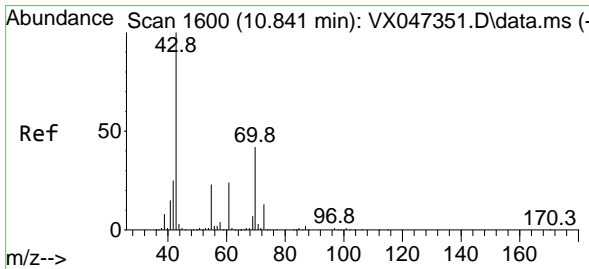
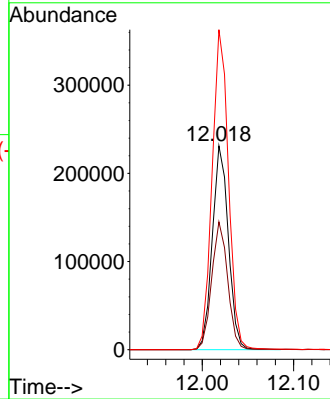
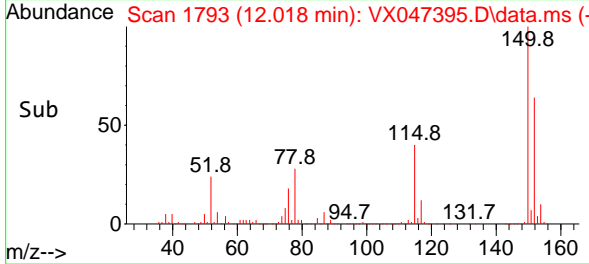


#72
 1,4-Dichlorobenzene-d4
 Concen: 50.000 ug/l
 RT: 12.018 min Scan# 1793
 Delta R.T. 0.000 min
 Lab File: VX047395.D
 Acq: 18 Aug 2025 19:52

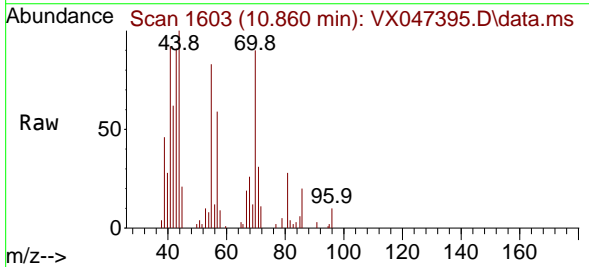
Instrument : MSVOA_X
 ClientSampleId : SAND-BLAST-B



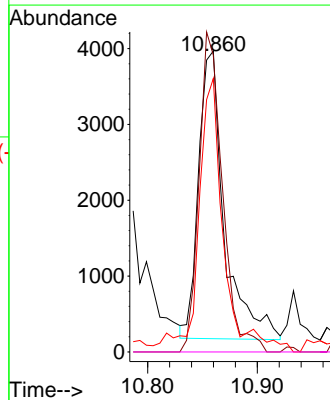
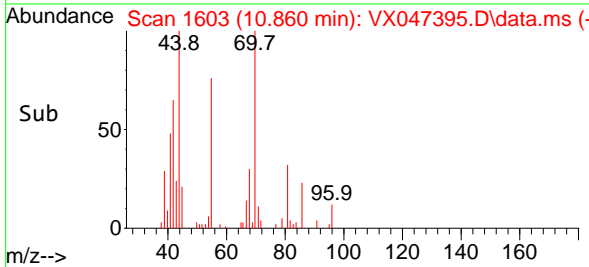
Tgt Ion:152 Resp: 281858
 Ion Ratio Lower Upper
 152 100
 115 62.6 44.6 133.8
 150 159.7 0.0 349.8

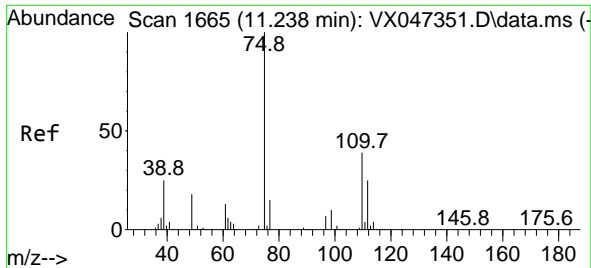


#74
 N-amy1 acetate
 Concen: 0.735 ug/l
 RT: 10.860 min Scan# 1603
 Delta R.T. 0.019 min
 Lab File: VX047395.D
 Acq: 18 Aug 2025 19:52



Tgt Ion: 43 Resp: 6156
 Ion Ratio Lower Upper
 43 100
 70 101.6 33.1 49.7#
 55 92.1 19.0 28.6#
 61 0.0 19.0 28.6#

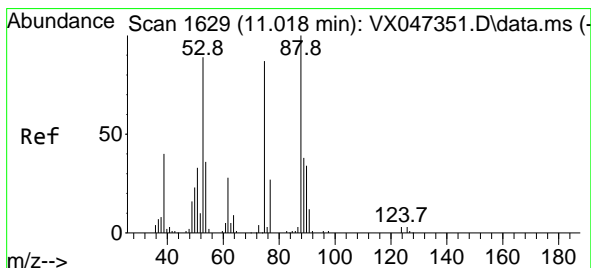
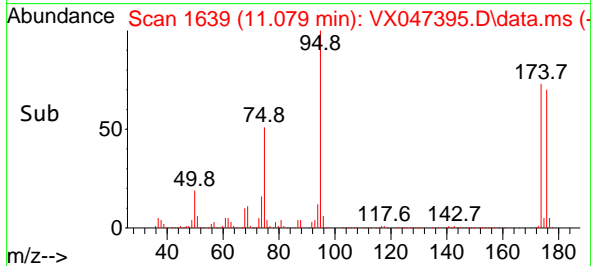
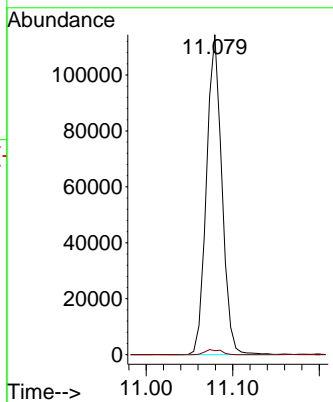
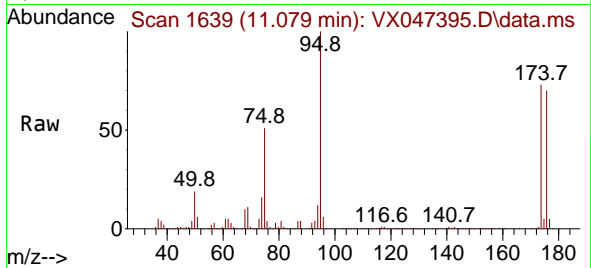




#76
 1,2,3-Trichloropropane
 Concen: 27.356 ug/l
 RT: 11.079 min Scan# 1639
 Delta R.T. -0.158 min
 Lab File: VX047395.D
 Acq: 18 Aug 2025 19:52

Instrument : MSVOA_X
 ClientSampleId : SAND-BLAST-B

Tgt Ion: 75 Resp: 141420
 Ion Ratio Lower Upper
 75 100
 77 1.7 19.4 58.2#



#81
 trans-1,4-Dichloro-2-butene
 Concen: 108.072 ug/l
 RT: 11.079 min Scan# 1639
 Delta R.T. 0.061 min
 Lab File: VX047395.D
 Acq: 18 Aug 2025 19:52

Tgt Ion: 75 Resp: 141420
 Ion Ratio Lower Upper
 75 100
 53 0.1 85.2 127.8#
 89 0.0 36.7 55.1#

