

Data Path : Z:\voasrv\HPCHEM1\MSVOA_X\Data\VX081825\
 Data File : VX047397.D
 Acq On : 18 Aug 2025 20:35
 Operator : JC/MD
 Sample : Q2888-02
 Misc : 5.0mL/MSVOA_X/WATER
 ALS Vial : 28 Sample Multiplier: 1

Instrument :
 MSVOA_X
 ClientSampleId :
 VNJ-210

Quant Time: Aug 19 01:50:52 2025
 Quant Method : Z:\voasrv\HPCHEM1\MSVOA_X\Method\82X081525W.M
 Quant Title : SW846 8260
 QLast Update : Mon Aug 18 04:18:28 2025
 Response via : Initial Calibration

Compound	R.T.	QIon	Response	Conc	Units	Dev(Min)

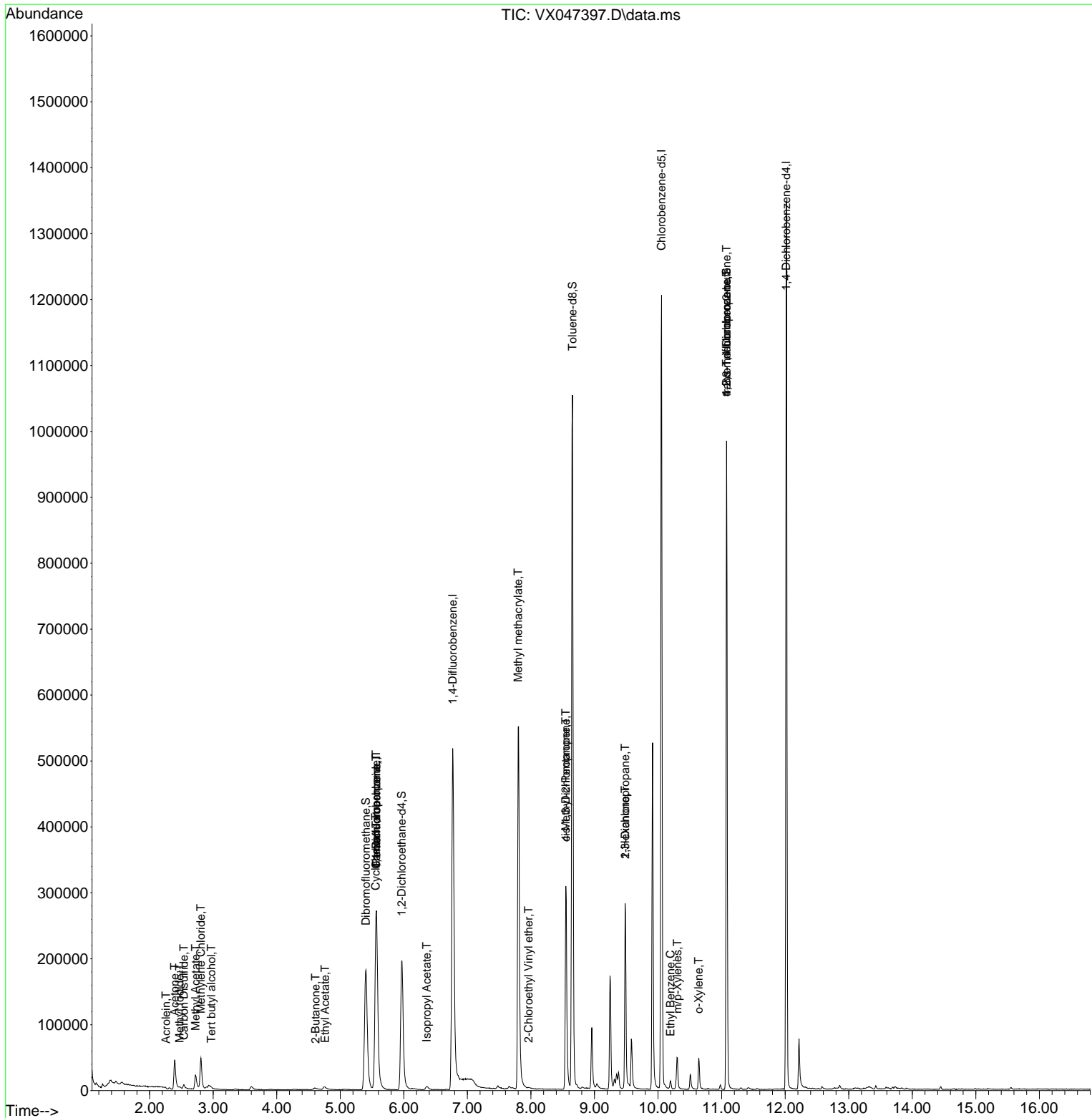
Internal Standards						
1) Pentafluorobenzene	5.568	168	275192	50.000	ug/l	0.00
34) 1,4-Difluorobenzene	6.769	114	542301	50.000	ug/l	0.00
63) Chlorobenzene-d5	10.055	117	527857	50.000	ug/l	0.00
72) 1,4-Dichlorobenzene-d4	12.018	152	264358	50.000	ug/l	0.00
System Monitoring Compounds						
33) 1,2-Dichloroethane-d4	5.964	65	209777	54.468	ug/l	0.00
Spiked Amount	50.000	Range 78 - 117	Recovery	=	108.940%	
35) Dibromofluoromethane	5.404	113	175898	49.977	ug/l	0.00
Spiked Amount	50.000	Range 75 - 124	Recovery	=	99.960%	
50) Toluene-d8	8.653	98	641640	51.005	ug/l	0.00
Spiked Amount	50.000	Range 92 - 112	Recovery	=	102.020%	
62) 4-Bromofluorobenzene	11.079	95	257810	55.536	ug/l	0.00
Spiked Amount	50.000	Range 83 - 123	Recovery	=	111.080%	
Target Compounds						
						Qvalue
10) Methyl Iodide	2.471	142	1888	0.324	ug/l #	86
11) Tert butyl alcohol	2.971	59	924	2.758	ug/l #	72
13) Acrolein	2.258	56	219	0.310	ug/l #	14
16) Acetone	2.392	43	65972	45.571	ug/l	98
17) Carbon Disulfide	2.538	76	7990	0.764	ug/l	97
18) Methyl Acetate	2.721	43	28218	7.522	ug/l #	90
20) Methylene Chloride	2.806	84	21956	5.727	ug/l	99
25) 2-Butanone	4.611	43	3287	1.734	ug/l	93
31) Cyclohexane	5.556	56	5936	0.958	ug/l #	7
36) 1,1-Dichloropropene	5.562	75	23615	4.250	ug/l #	50
37) Ethyl Acetate	4.763	43	8452	1.465	ug/l #	89
38) Carbon Tetrachloride	5.562	117	28920	4.763	ug/l #	15
43) Isopropyl Acetate	6.361	43	8240	0.994	ug/l #	84
48) Methyl methacrylate	7.799	41	55309	12.860	ug/l #	44
51) 4-Methyl-2-Pentanone	8.549	43	115192	24.158	ug/l #	50
54) cis-1,3-Dichloropropene	8.549	75	52373	8.455	ug/l #	62
57) 1,3-Dichloropropane	9.482	76	2486	0.374	ug/l #	42
58) 2-Chloroethyl Vinyl ether	7.964	63	22	8.363	ug/l #	46
59) 2-Hexanone	9.482	43	37214	11.283	ug/l #	53
67) Ethyl Benzene	10.195	91	7193	0.333	ug/l	92
68) m/p-Xylenes	10.305	106	11818	1.468	ug/l	96
69) o-Xylene	10.640	106	3062	0.395	ug/l	97
76) 1,2,3-Trichloropropane	11.079	75	133386	27.510	ug/l #	39
81) trans-1,4-Dichloro-2-b...	11.079	75	133386	108.636	ug/l #	7

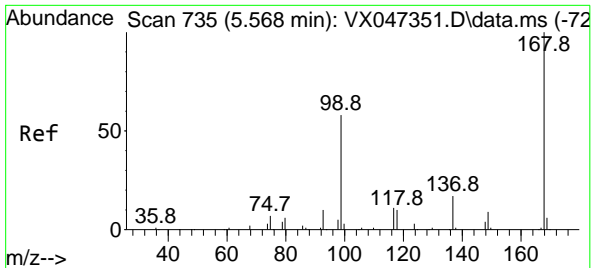
(#) = qualifier out of range (m) = manual integration (+) = signals summed

Data Path : Z:\voasrv\HPCHEM1\MSVOA_X\Data\VX081825\
 Data File : VX047397.D
 Acq On : 18 Aug 2025 20:35
 Operator : JC/MD
 Sample : Q2888-02
 Misc : 5.0mL/MSVOA_X/WATER
 ALS Vial : 28 Sample Multiplier: 1

Instrument :
 MSVOA_X
 ClientSampleId :
 VNJ-210

Quant Time: Aug 19 01:50:52 2025
 Quant Method : Z:\voasrv\HPCHEM1\MSVOA_X\Method\82X081525W.M
 Quant Title : SW846 8260
 QLast Update : Mon Aug 18 04:18:28 2025
 Response via : Initial Calibration

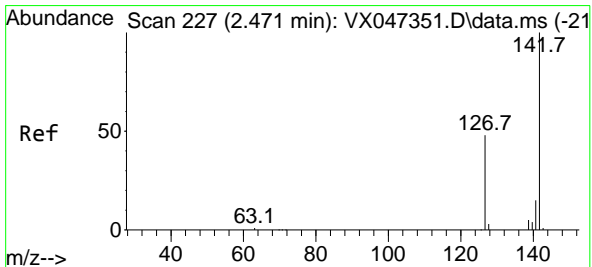
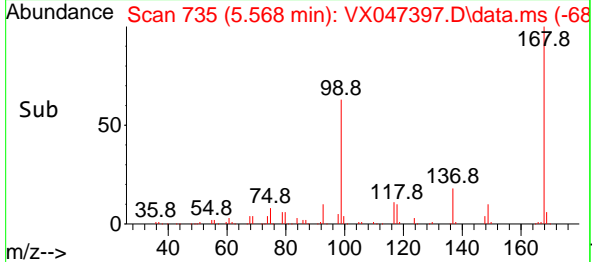
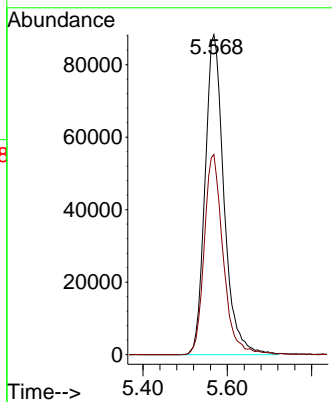
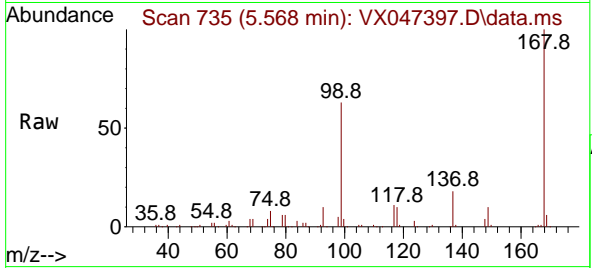




#1
 Pentafluorobenzene
 Concen: 50.000 ug/l
 RT: 5.568 min Scan# 71
 Delta R.T. 0.000 min
 Lab File: VX047397.D
 Acq: 18 Aug 2025 20:35

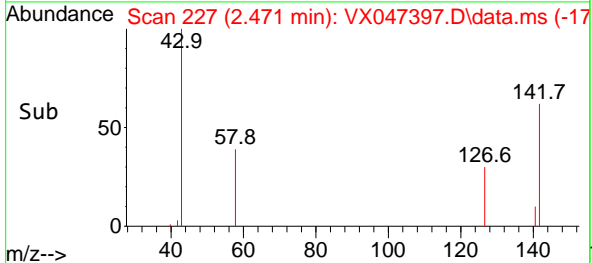
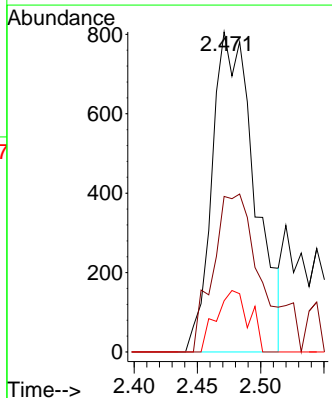
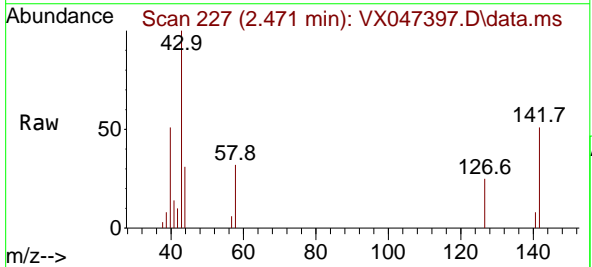
Instrument :
 MSVOA_X
 ClientSampleId :
 VNJ-210

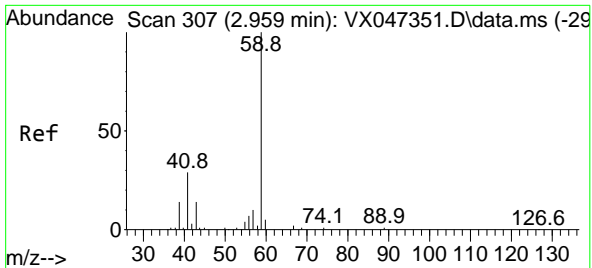
Tgt Ion:168 Resp: 275192
 Ion Ratio Lower Upper
 168 100
 99 62.5 47.9 71.9



#10
 Methyl Iodide
 Concen: 0.324 ug/l
 RT: 2.471 min Scan# 227
 Delta R.T. 0.000 min
 Lab File: VX047397.D
 Acq: 18 Aug 2025 20:35

Tgt Ion:142 Resp: 1888
 Ion Ratio Lower Upper
 142 100
 127 56.5 36.1 54.1#
 141 14.9 11.1 16.7

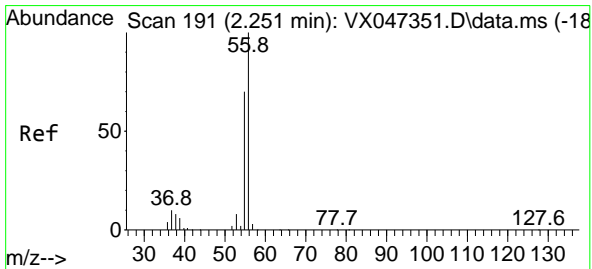
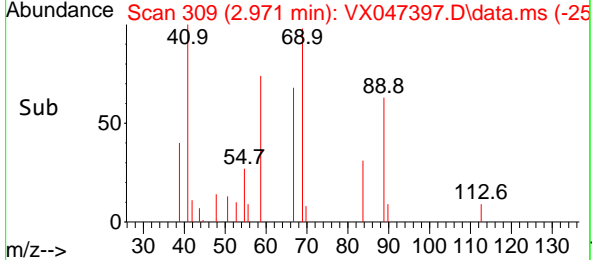
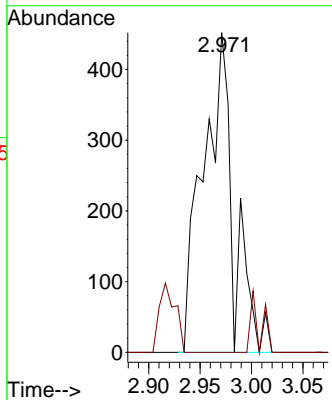
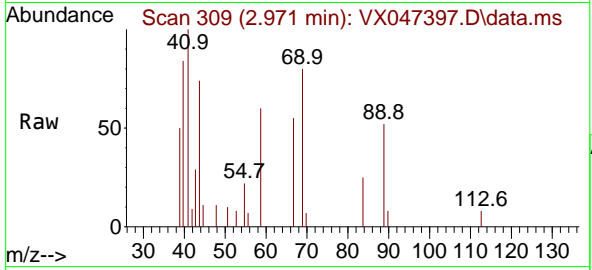




#11
 Tert butyl alcohol
 Concen: 2.758 ug/l
 RT: 2.971 min Scan# 30
 Delta R.T. 0.012 min
 Lab File: VX047397.D
 Acq: 18 Aug 2025 20:35

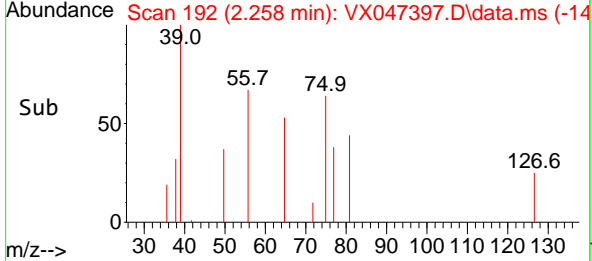
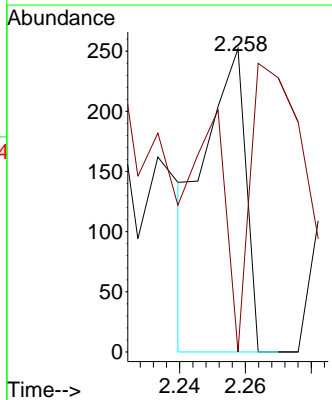
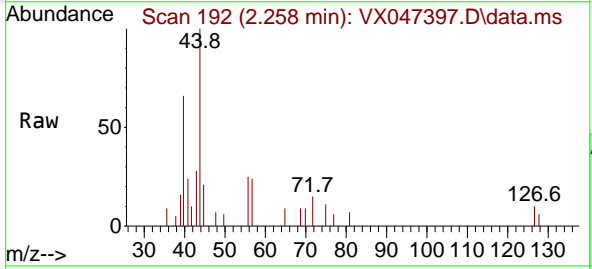
Instrument : MSVOA_X
 ClientSampleId : VNJ-210

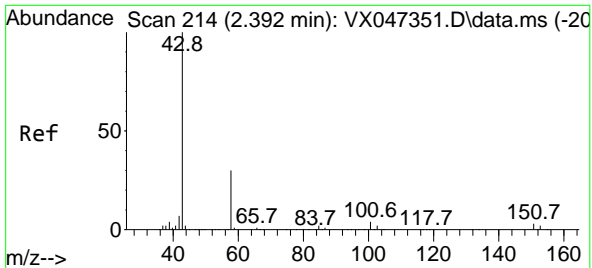
Tgt Ion: 59 Resp: 924
 Ion Ratio Lower Upper
 59 100
 57 0.0 8.3 12.5#



#13
 Acrolein
 Concen: 0.310 ug/l
 RT: 2.258 min Scan# 192
 Delta R.T. 0.006 min
 Lab File: VX047397.D
 Acq: 18 Aug 2025 20:35

Tgt Ion: 56 Resp: 219
 Ion Ratio Lower Upper
 56 100
 55 139.3 55.5 83.3#

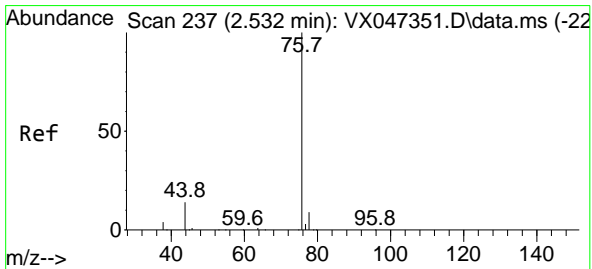
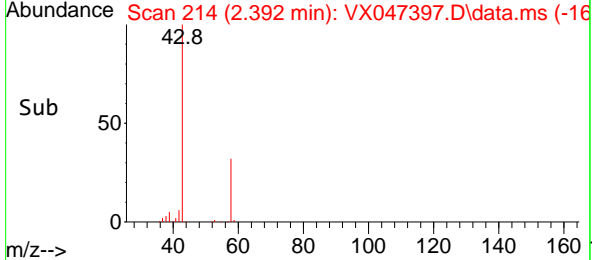
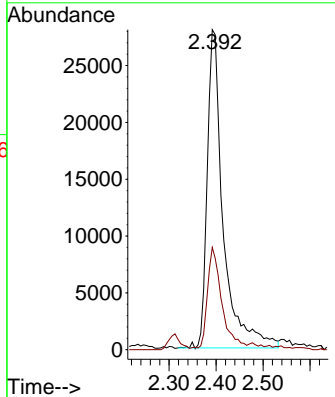
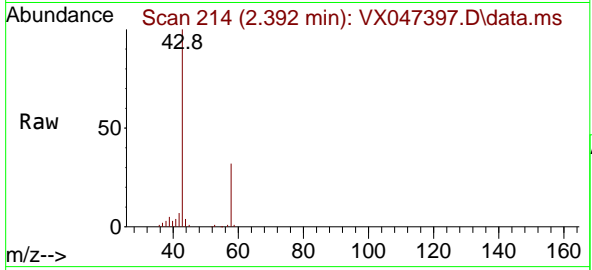




#16
 Acetone
 Concen: 45.571 ug/l
 RT: 2.392 min Scan# 21
 Delta R.T. 0.000 min
 Lab File: VX047397.D
 Acq: 18 Aug 2025 20:35

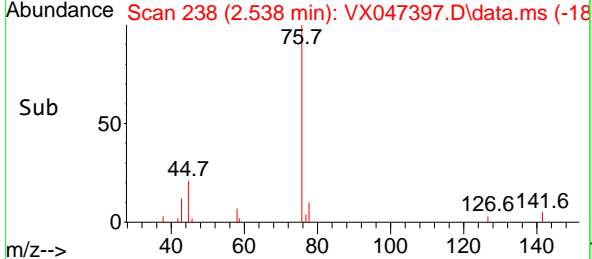
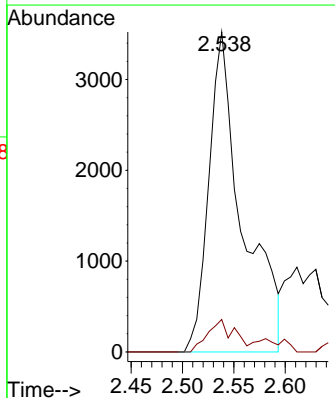
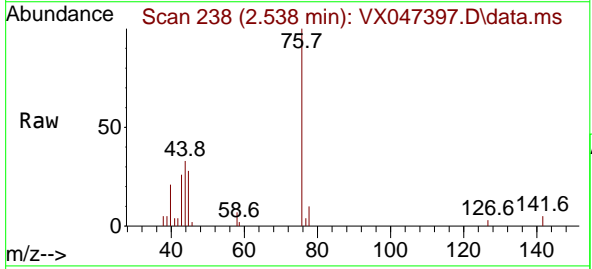
Instrument : MSVOA_X
 ClientSampleId : VNJ-210

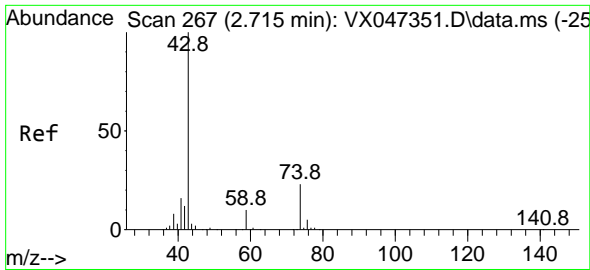
Tgt Ion: 43 Resp: 65972
 Ion Ratio Lower Upper
 43 100
 58 32.1 24.8 37.2



#17
 Carbon Disulfide
 Concen: 0.764 ug/l
 RT: 2.538 min Scan# 238
 Delta R.T. 0.006 min
 Lab File: VX047397.D
 Acq: 18 Aug 2025 20:35

Tgt Ion: 76 Resp: 7990
 Ion Ratio Lower Upper
 76 100
 78 10.2 7.2 10.8

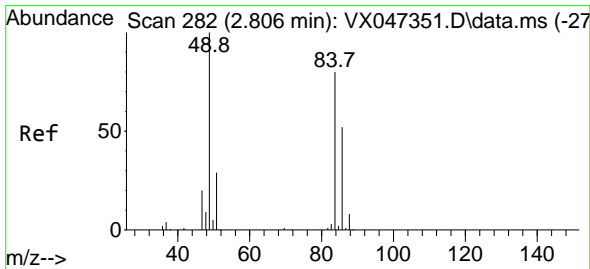
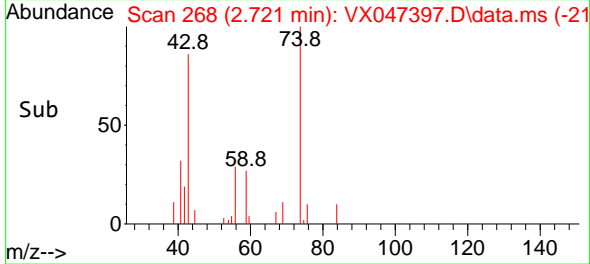
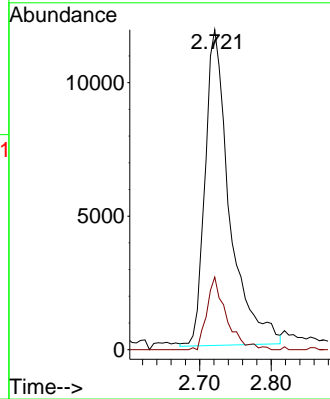
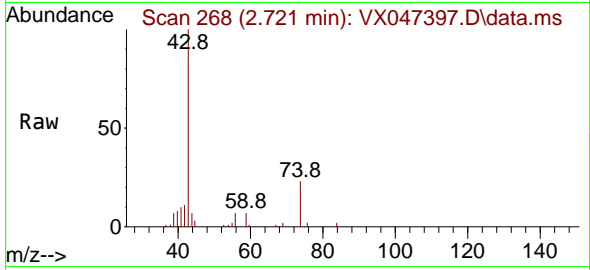




#18
 Methyl Acetate
 Concen: 7.522 ug/l
 RT: 2.721 min Scan# 20
 Delta R.T. 0.006 min
 Lab File: VX047397.D
 Acq: 18 Aug 2025 20:35

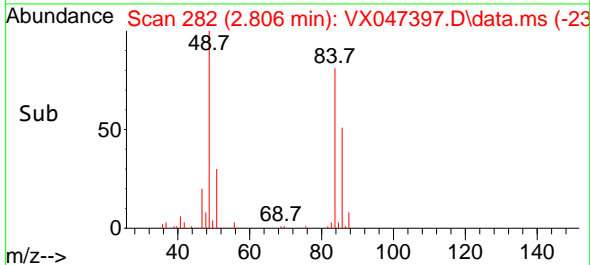
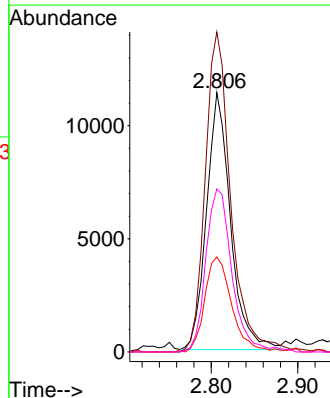
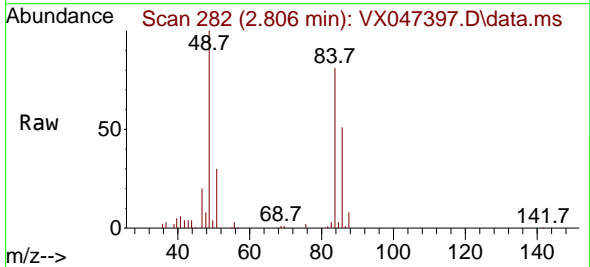
Instrument :
 MSVOA_X
 ClientSampleId :
 VNJ-210

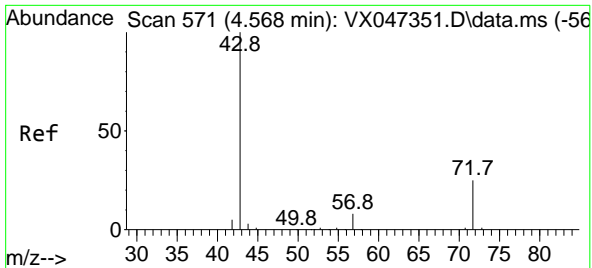
Tgt Ion: 43 Resp: 28218
 Ion Ratio Lower Upper
 43 100
 74 18.3 18.4 27.6#



#20
 Methylene Chloride
 Concen: 5.727 ug/l
 RT: 2.806 min Scan# 282
 Delta R.T. 0.000 min
 Lab File: VX047397.D
 Acq: 18 Aug 2025 20:35

Tgt Ion: 84 Resp: 21956
 Ion Ratio Lower Upper
 84 100
 49 124.6 100.1 150.1
 51 36.3 29.5 44.3
 86 64.5 51.8 77.8

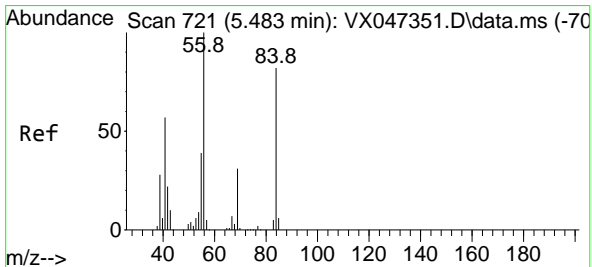
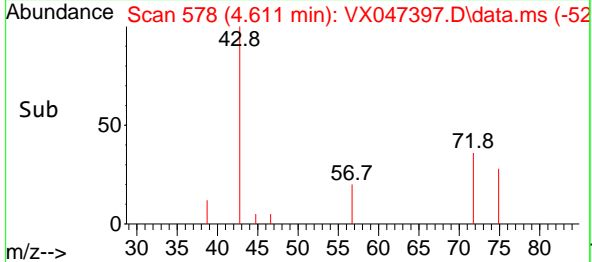
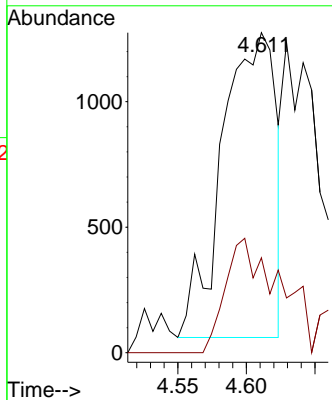
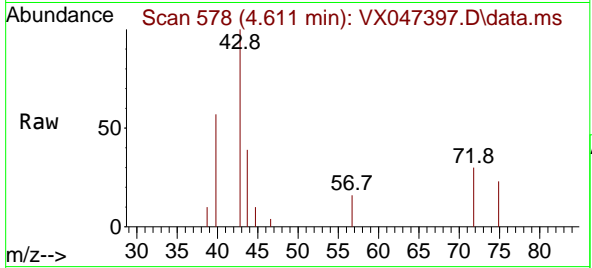




#25
 2-Butanone
 Concen: 1.734 ug/l
 RT: 4.611 min Scan# 51
 Delta R.T. 0.043 min
 Lab File: VX047397.D
 Acq: 18 Aug 2025 20:35

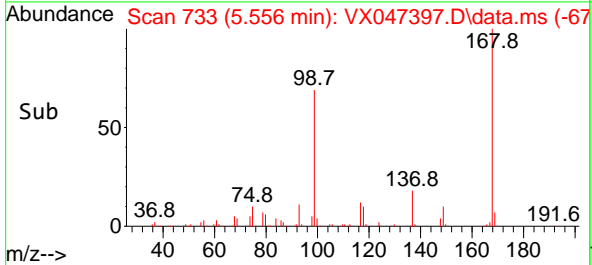
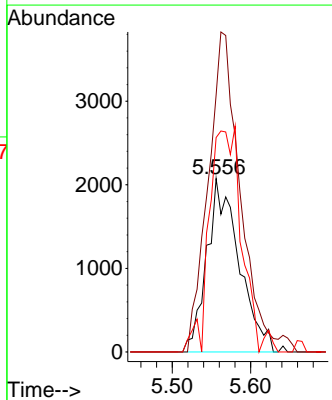
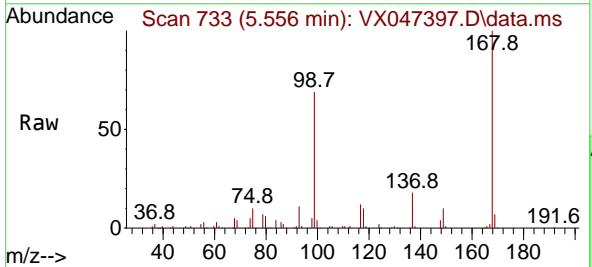
Instrument :
 MSVOA_X
 ClientSampleId :
 VNJ-210

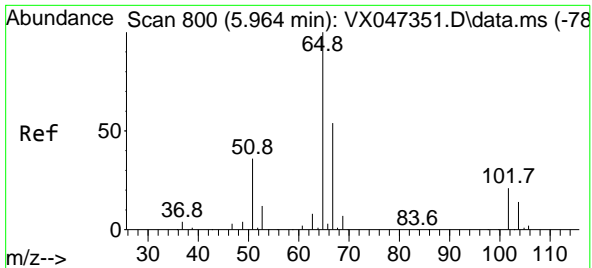
Tgt Ion: 43 Resp: 3287
 Ion Ratio Lower Upper
 43 100
 72 28.5 19.8 29.8



#31
 Cyclohexane
 Concen: 0.958 ug/l
 RT: 5.556 min Scan# 733
 Delta R.T. 0.073 min
 Lab File: VX047397.D
 Acq: 18 Aug 2025 20:35

Tgt Ion: 56 Resp: 5936
 Ion Ratio Lower Upper
 56 100
 69 148.2 24.3 36.5#
 84 123.7 65.3 97.9#

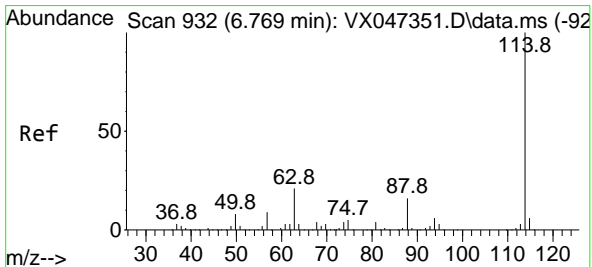
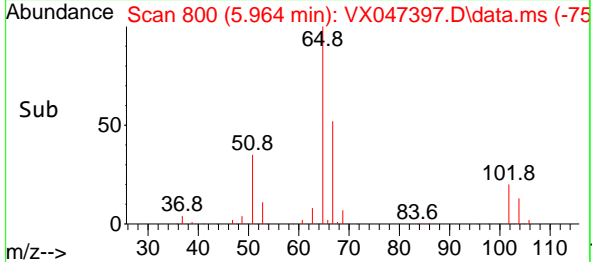
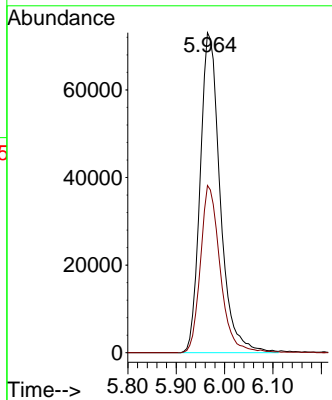
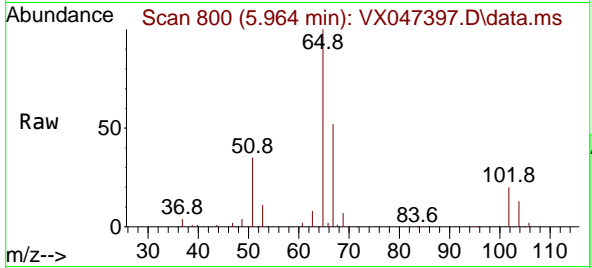




#33
 1,2-Dichloroethane-d4
 Concen: 54.468 ug/l
 RT: 5.964 min Scan# 800
 Delta R.T. 0.000 min
 Lab File: VX047397.D
 Acq: 18 Aug 2025 20:35

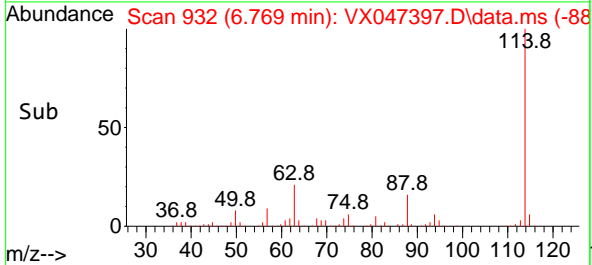
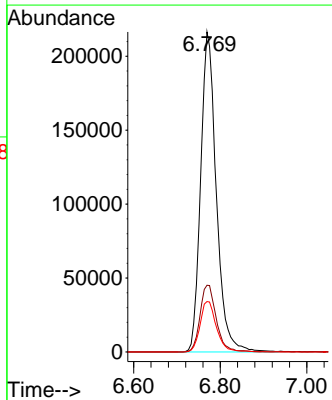
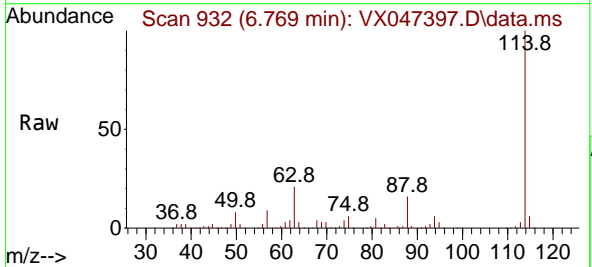
Instrument :
 MSVOA_X
 ClientSampleId :
 VNJ-210

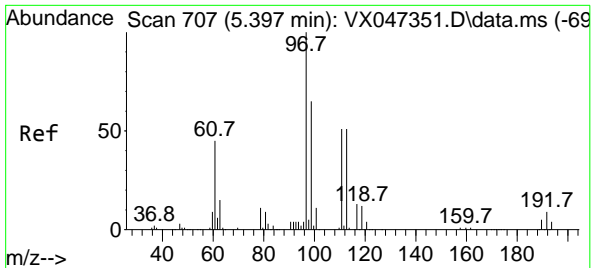
Tgt Ion: 65 Resp: 209777
 Ion Ratio Lower Upper
 65 100
 67 51.8 0.0 106.0



#34
 1,4-Difluorobenzene
 Concen: 50.000 ug/l
 RT: 6.769 min Scan# 932
 Delta R.T. 0.000 min
 Lab File: VX047397.D
 Acq: 18 Aug 2025 20:35

Tgt Ion: 114 Resp: 542301
 Ion Ratio Lower Upper
 114 100
 63 20.9 0.0 42.4
 88 15.8 0.0 33.0



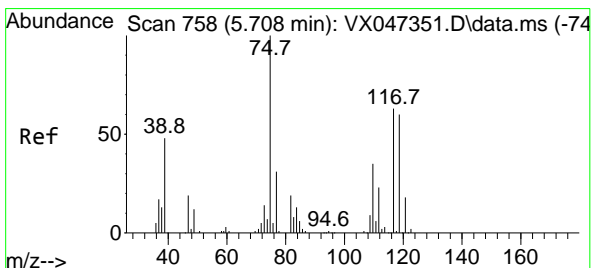
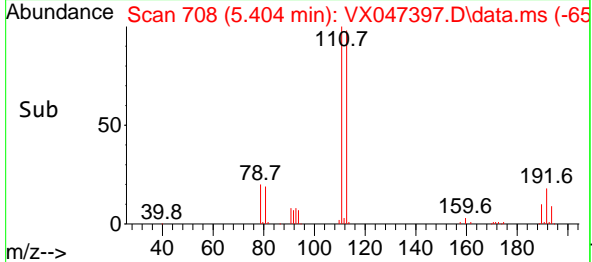
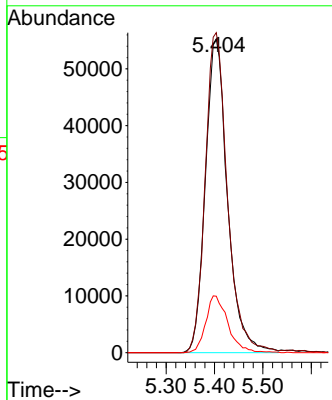
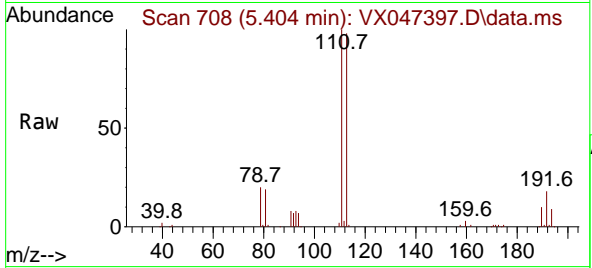


#35
 Dibromofluoromethane
 Concen: 49.977 ug/l
 RT: 5.404 min Scan# 707
 Delta R.T. 0.006 min
 Lab File: VX047397.D
 Acq: 18 Aug 2025 20:35

Instrument : MSVOA_X
 Client Sample Id : VNJ-210

Tgt Ion: 113 Resp: 175898

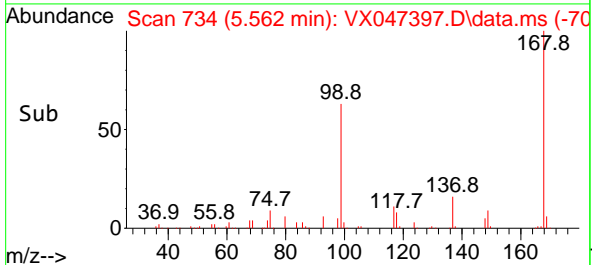
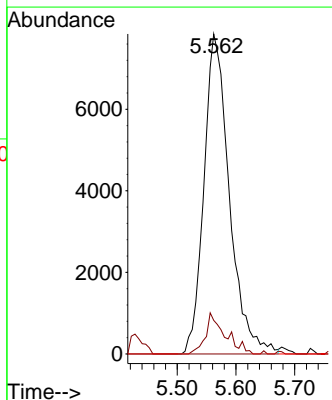
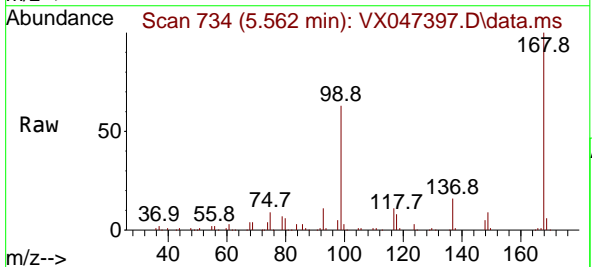
Ion	Ratio	Lower	Upper
113	100		
111	102.4	81.4	122.2
192	18.2	14.1	21.1

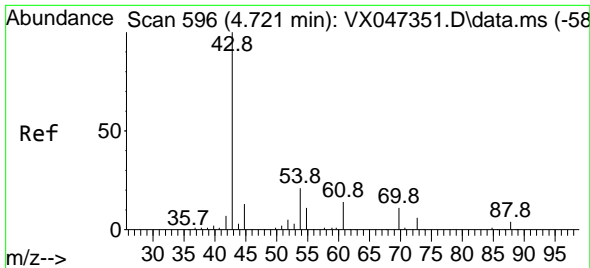


#36
 1,1-Dichloropropene
 Concen: 4.250 ug/l
 RT: 5.562 min Scan# 734
 Delta R.T. -0.146 min
 Lab File: VX047397.D
 Acq: 18 Aug 2025 20:35

Tgt Ion: 75 Resp: 23615

Ion	Ratio	Lower	Upper
75	100		
110	9.2	17.4	52.2#
77	0.0	24.4	36.6#



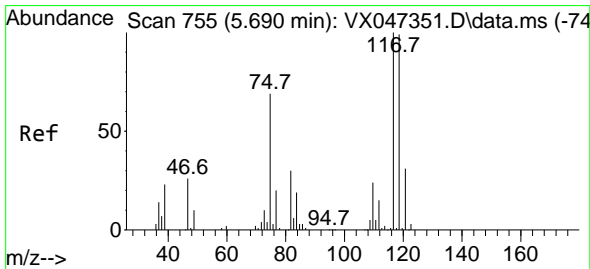
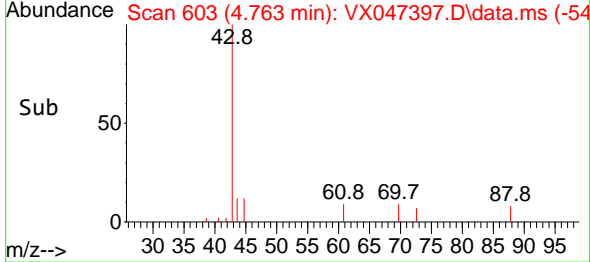
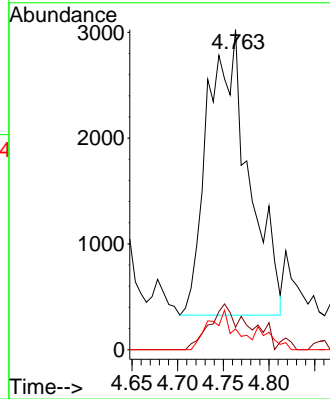
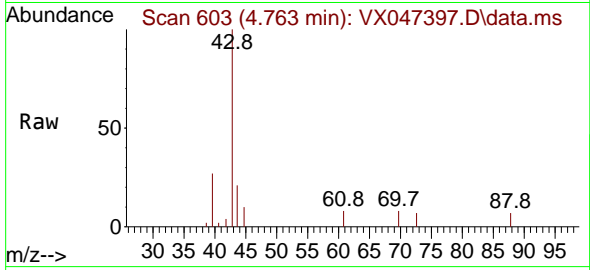


#37
 Ethyl Acetate
 Concen: 1.465 ug/l
 RT: 4.763 min Scan# 60
 Delta R.T. 0.043 min
 Lab File: VX047397.D
 Acq: 18 Aug 2025 20:35

Instrument :
 MSVOA_X
 ClientSampleId :
 VNJ-210

Tgt Ion: 43 Resp: 8452

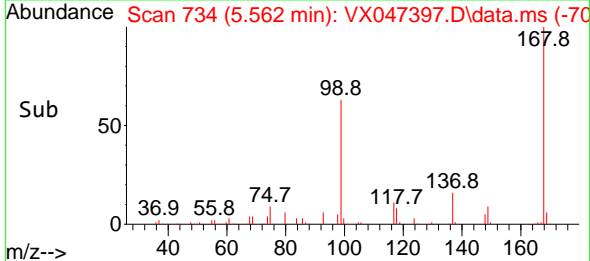
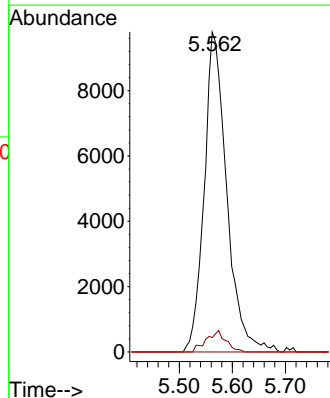
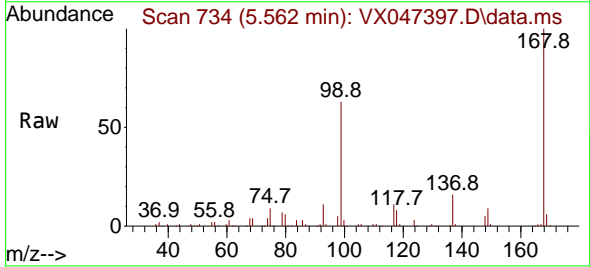
Ion	Ratio	Lower	Upper
43	100		
61	12.4	9.4	14.2
70	0.0	7.0	10.6#

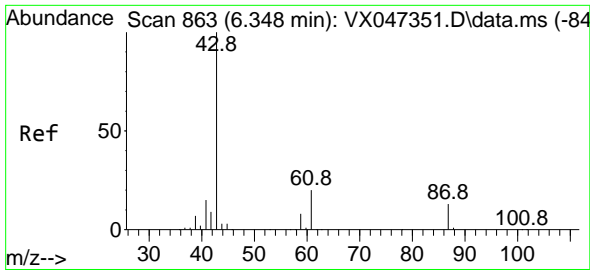


#38
 Carbon Tetrachloride
 Concen: 4.763 ug/l
 RT: 5.562 min Scan# 734
 Delta R.T. -0.128 min
 Lab File: VX047397.D
 Acq: 18 Aug 2025 20:35

Tgt Ion: 117 Resp: 28920

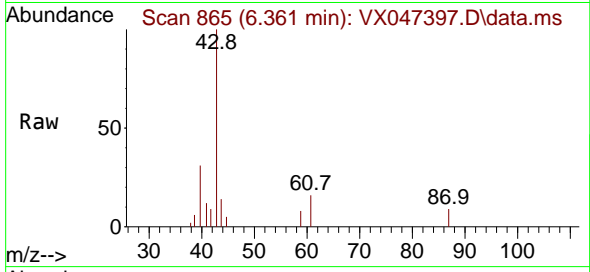
Ion	Ratio	Lower	Upper
117	100		
119	4.5	78.5	117.7#
121	0.0	24.7	37.1#



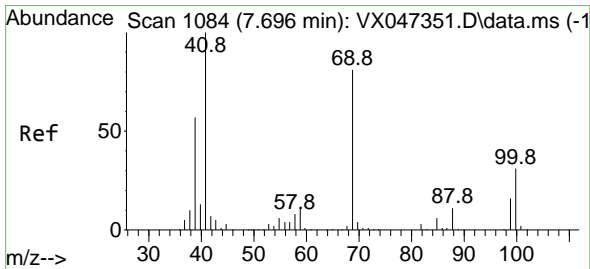
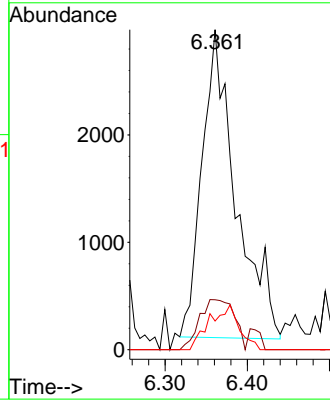
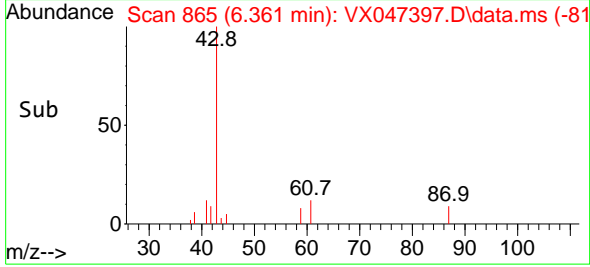


#43
 Isopropyl Acetate
 Concen: 0.994 ug/l
 RT: 6.361 min Scan# 80
 Delta R.T. 0.012 min
 Lab File: VX047397.D
 Acq: 18 Aug 2025 20:35

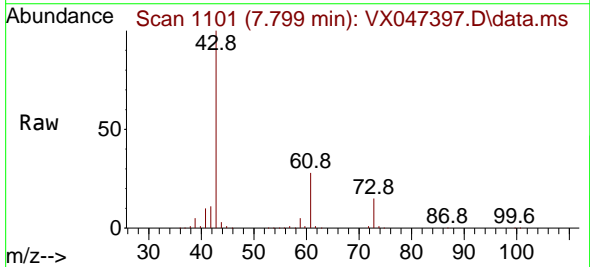
Instrument :
 MSVOA_X
 ClientSampleId :
 VNJ-210



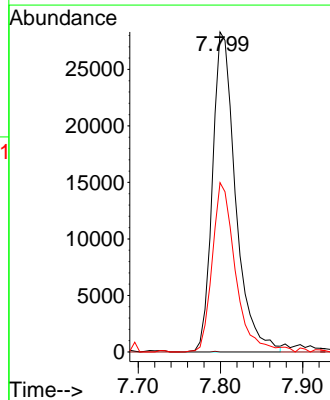
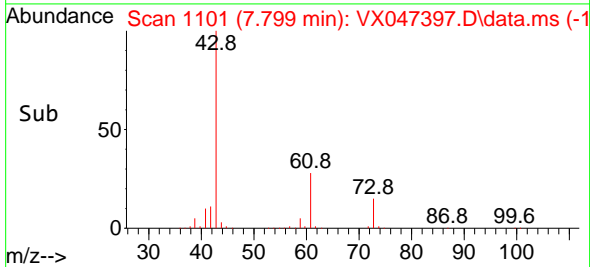
Tgt Ion: 43 Resp: 8240
 Ion Ratio Lower Upper
 43 100
 61 16.6 15.4 23.0
 87 0.0 10.2 15.4#

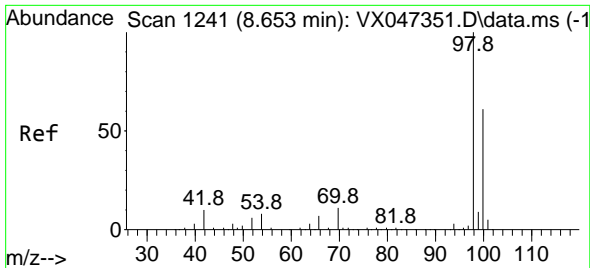


#48
 Methyl methacrylate
 Concen: 12.860 ug/l
 RT: 7.799 min Scan# 1101
 Delta R.T. 0.104 min
 Lab File: VX047397.D
 Acq: 18 Aug 2025 20:35



Tgt Ion: 41 Resp: 55309
 Ion Ratio Lower Upper
 41 100
 69 0.0 65.0 97.4#
 39 53.3 45.7 68.5

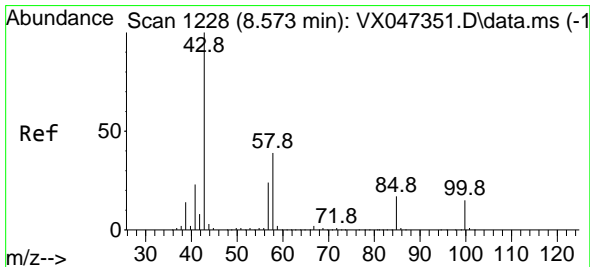
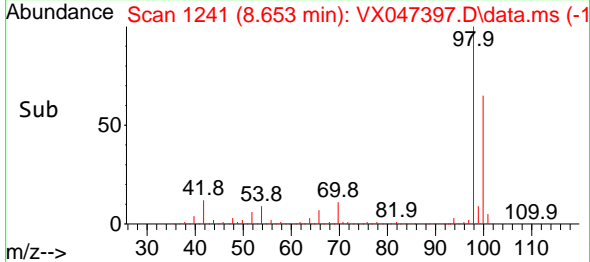
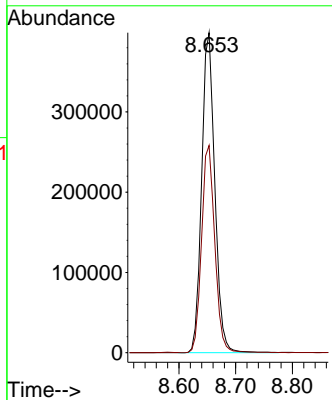
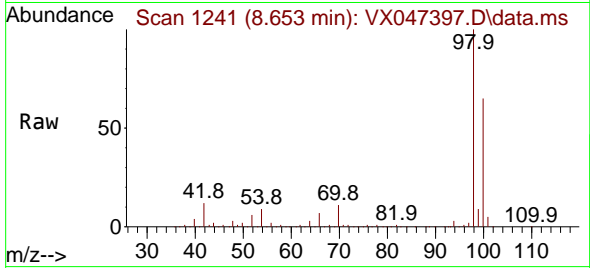




#50
 Toluene-d8
 Concen: 51.005 ug/l
 RT: 8.653 min Scan# 1241
 Delta R.T. 0.000 min
 Lab File: VX047397.D
 Acq: 18 Aug 2025 20:35

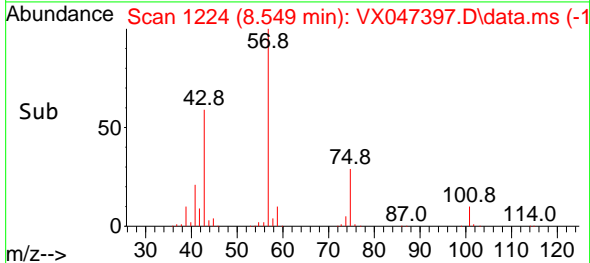
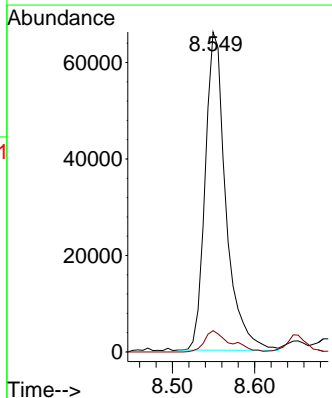
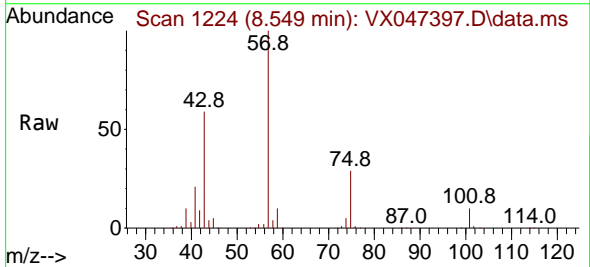
Instrument :
 MSVOA_X
 ClientSampleId :
 VNJ-210

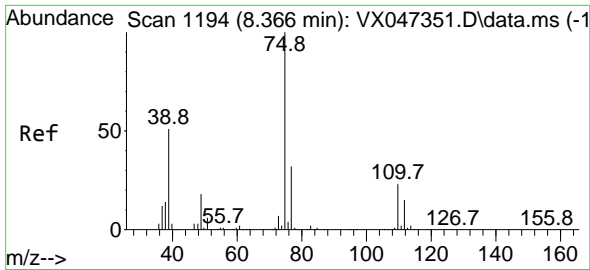
Tgt Ion: 98 Resp: 641640
 Ion Ratio Lower Upper
 98 100
 100 65.5 53.9 80.9



#51
 4-Methyl-2-Pentanone
 Concen: 24.158 ug/l
 RT: 8.549 min Scan# 1224
 Delta R.T. -0.024 min
 Lab File: VX047397.D
 Acq: 18 Aug 2025 20:35

Tgt Ion: 43 Resp: 115192
 Ion Ratio Lower Upper
 43 100
 58 8.3 31.2 46.8#

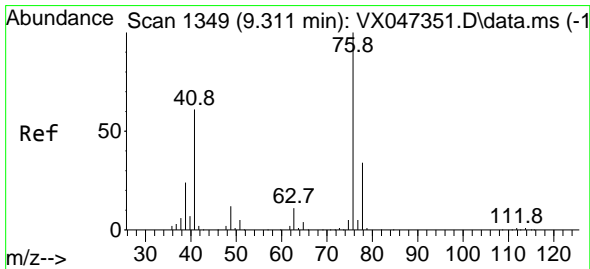
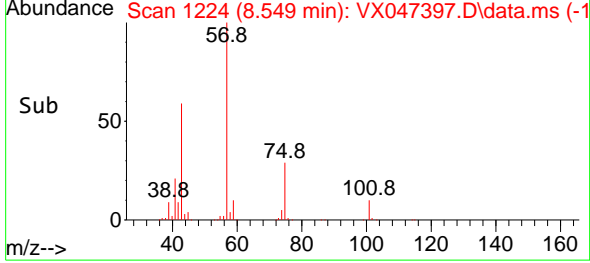
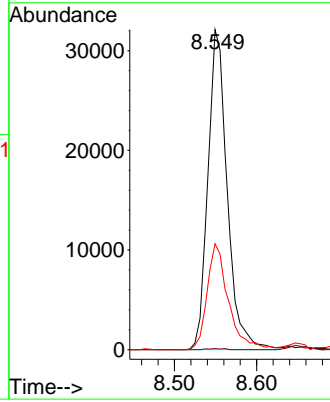
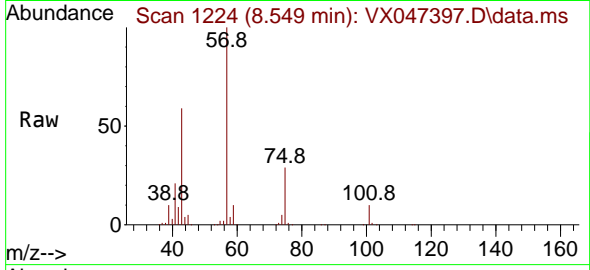




#54
 cis-1,3-Dichloropropene
 Concen: 8.455 ug/l
 RT: 8.549 min Scan# 1194
 Delta R.T. 0.183 min
 Lab File: VX047397.D
 Acq: 18 Aug 2025 20:35

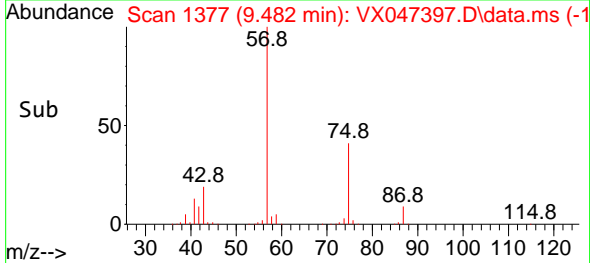
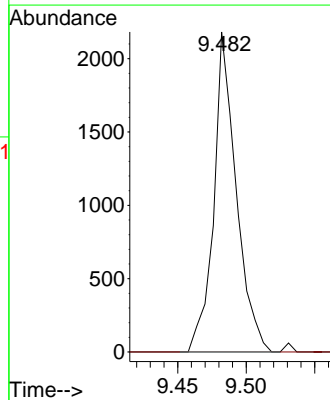
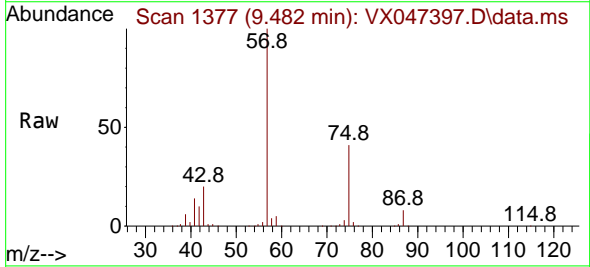
Instrument : MSVOA_X
 ClientSampleId : VNJ-210

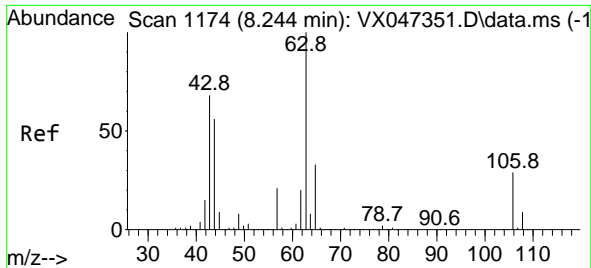
Tgt Ion: 75 Resp: 52373
 Ion Ratio Lower Upper
 75 100
 77 0.4 25.6 38.4#
 39 32.3 40.9 61.3#



#57
 1,3-Dichloropropane
 Concen: 0.374 ug/l
 RT: 9.482 min Scan# 1377
 Delta R.T. 0.171 min
 Lab File: VX047397.D
 Acq: 18 Aug 2025 20:35

Tgt Ion: 76 Resp: 2486
 Ion Ratio Lower Upper
 76 100
 78 0.0 26.2 39.2#

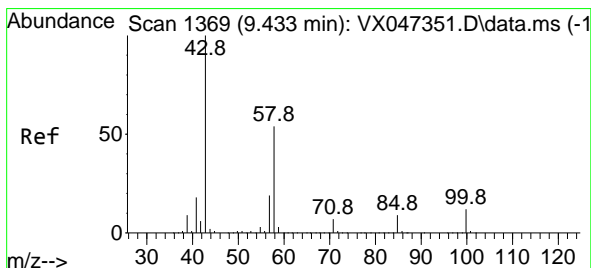
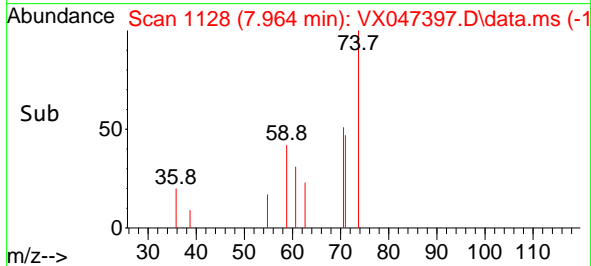
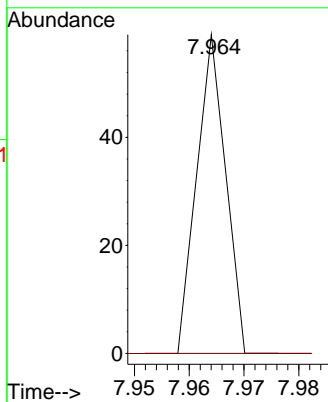
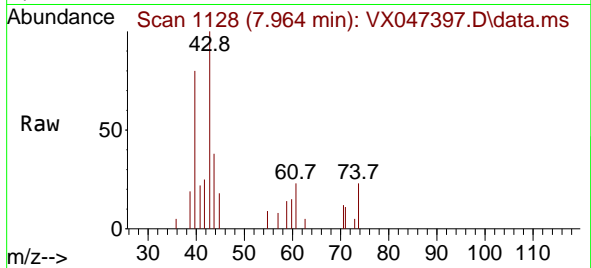




#58
 2-Chloroethyl Vinyl ether
 Concen: 8.363 ug/l
 RT: 7.964 min Scan# 1174
 Delta R.T. -0.280 min
 Lab File: VX047397.D
 Acq: 18 Aug 2025 20:35

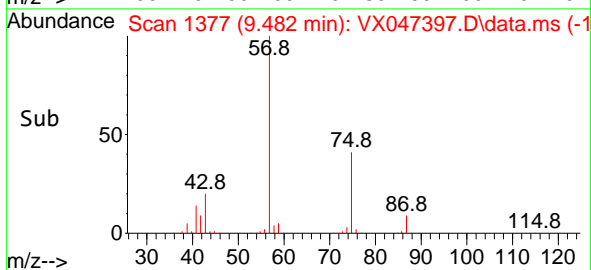
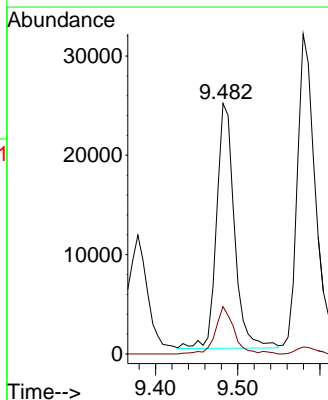
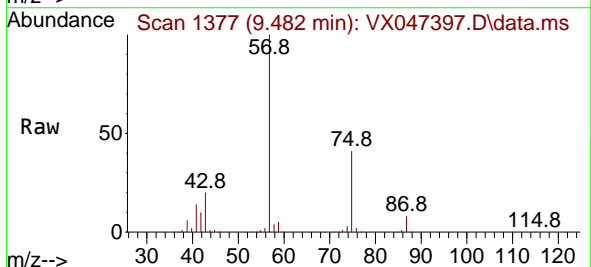
Instrument : MSVOA_X
 ClientSampleId : VNJ-210

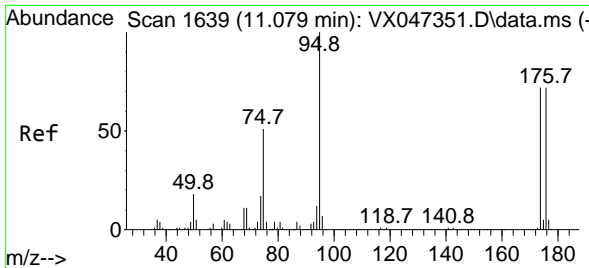
Tgt Ion: 63 Resp: 22
 Ion Ratio Lower Upper
 63 100
 106 0.0 22.8 34.2#



#59
 2-Hexanone
 Concen: 11.283 ug/l
 RT: 9.482 min Scan# 1377
 Delta R.T. 0.049 min
 Lab File: VX047397.D
 Acq: 18 Aug 2025 20:35

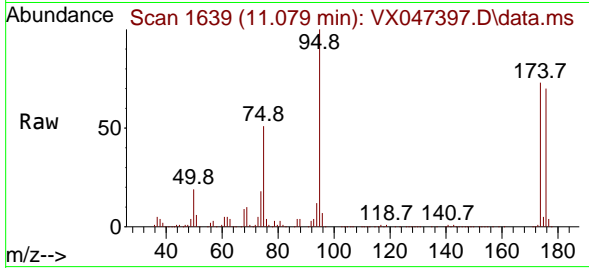
Tgt Ion: 43 Resp: 37214
 Ion Ratio Lower Upper
 43 100
 58 19.9 26.9 80.7#



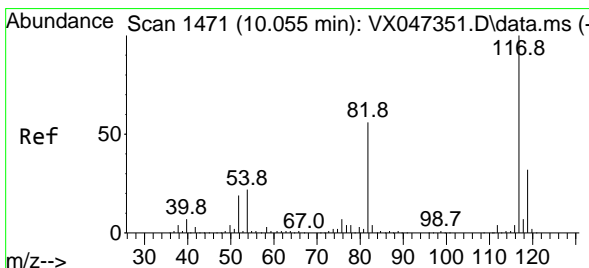
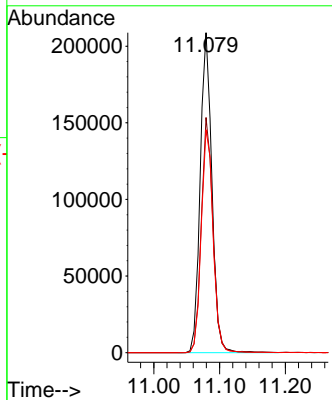
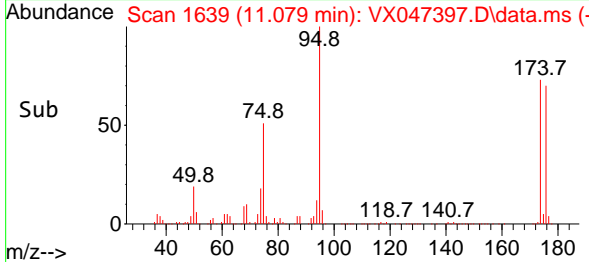


#62
 4-Bromofluorobenzene
 Concen: 55.536 ug/l
 RT: 11.079 min Scan# 1
 Delta R.T. 0.000 min
 Lab File: VX047397.D
 Acq: 18 Aug 2025 20:35

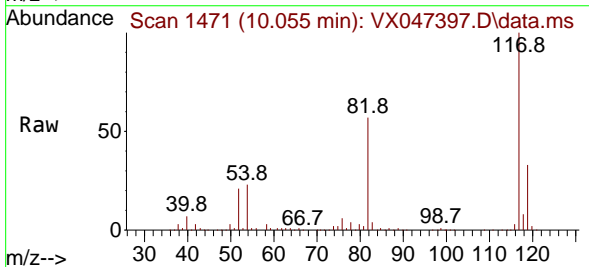
Instrument :
 MSVOA_X
 ClientSampleId :
 VNJ-210



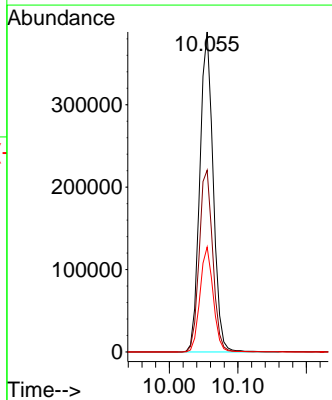
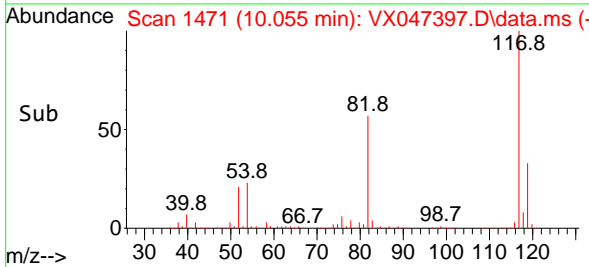
Tgt Ion: 95 Resp: 257810
 Ion Ratio Lower Upper
 95 100
 174 73.3 0.0 148.0
 176 70.9 0.0 145.4

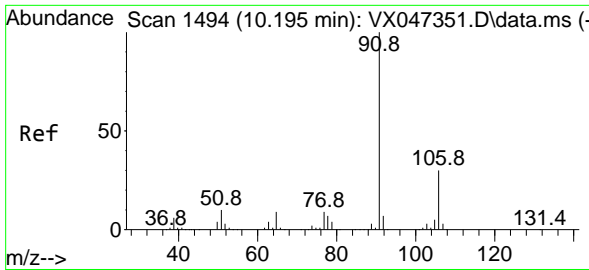


#63
 Chlorobenzene-d5
 Concen: 50.000 ug/l
 RT: 10.055 min Scan# 1471
 Delta R.T. 0.000 min
 Lab File: VX047397.D
 Acq: 18 Aug 2025 20:35



Tgt Ion: 117 Resp: 527857
 Ion Ratio Lower Upper
 117 100
 82 56.8 45.0 67.4
 119 32.8 25.8 38.8

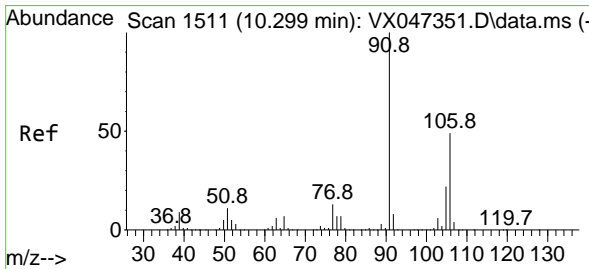
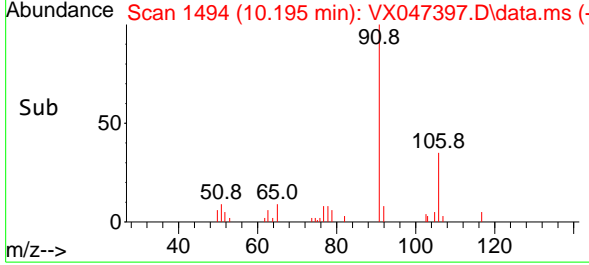
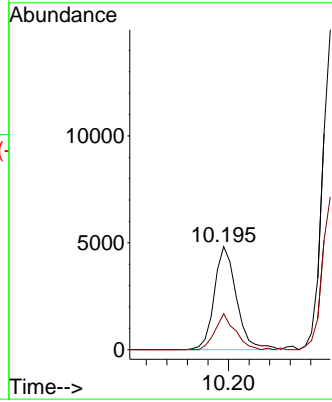
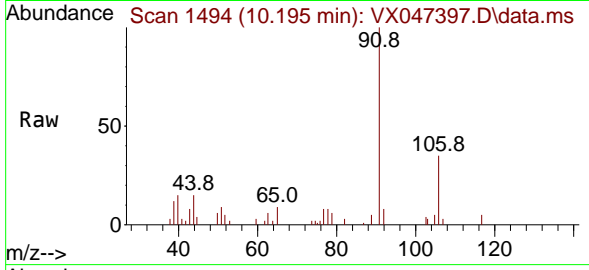




#67
 Ethyl Benzene
 Concen: 0.333 ug/l
 RT: 10.195 min Scan# 1494
 Delta R.T. 0.000 min
 Lab File: VX047397.D
 Acq: 18 Aug 2025 20:35

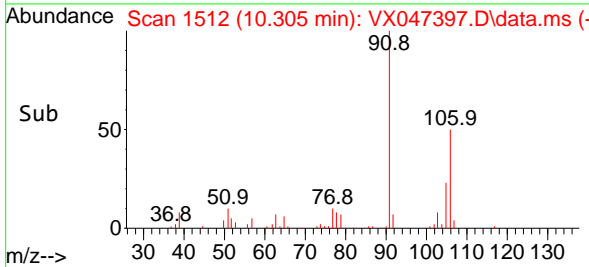
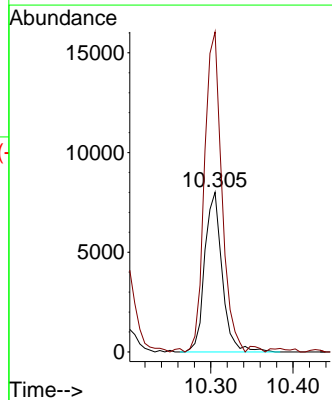
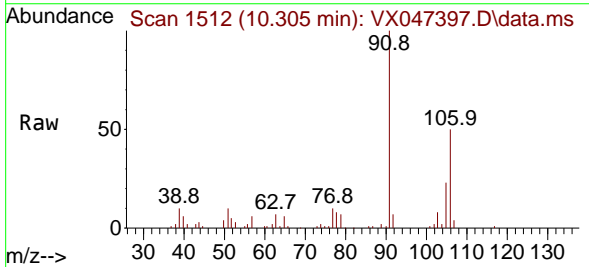
Instrument :
 MSVOA_X
 ClientSampleId :
 VNJ-210

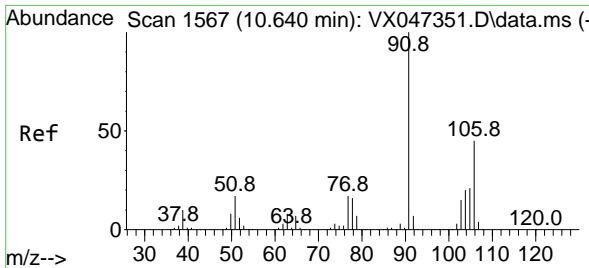
Tgt Ion: 91 Resp: 7193
 Ion Ratio Lower Upper
 91 100
 106 34.9 24.4 36.6



#68
 m/p-Xylenes
 Concen: 1.468 ug/l
 RT: 10.305 min Scan# 1512
 Delta R.T. 0.006 min
 Lab File: VX047397.D
 Acq: 18 Aug 2025 20:35

Tgt Ion: 106 Resp: 11818
 Ion Ratio Lower Upper
 106 100
 91 199.1 164.7 247.1

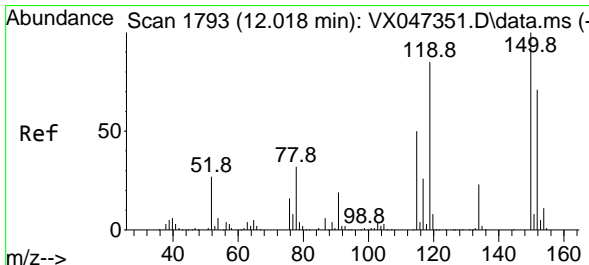
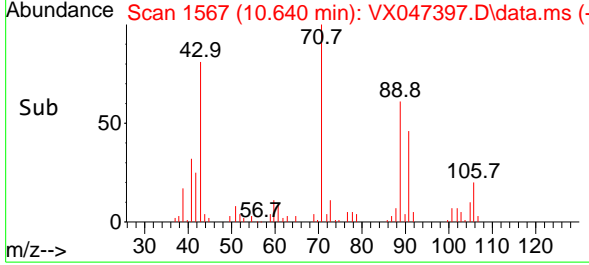
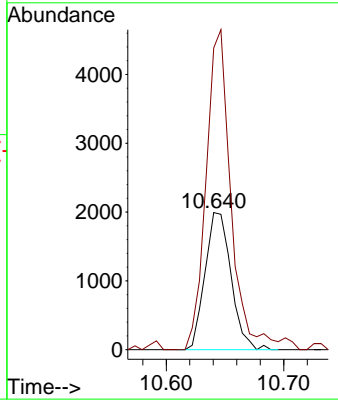
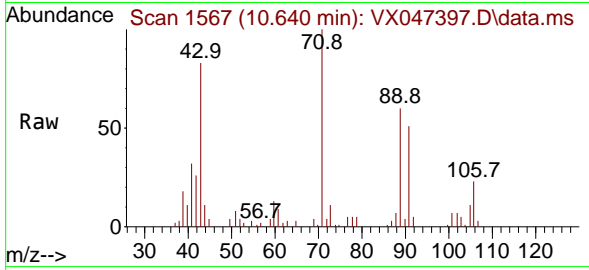




#69
 o-Xylene
 Concen: 0.395 ug/l
 RT: 10.640 min Scan# 11
 Delta R.T. 0.000 min
 Lab File: VX047397.D
 Acq: 18 Aug 2025 20:35

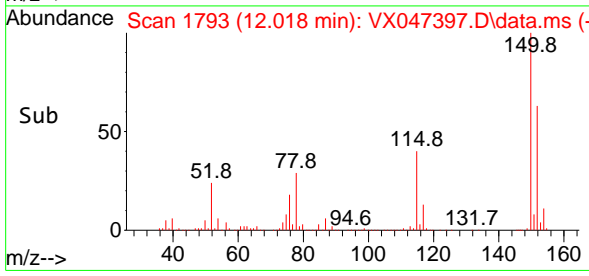
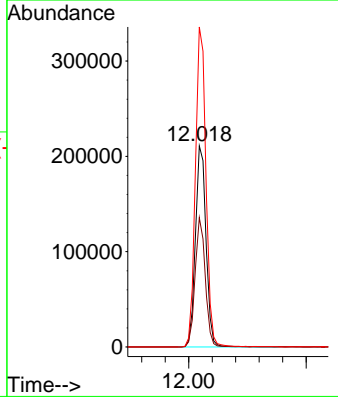
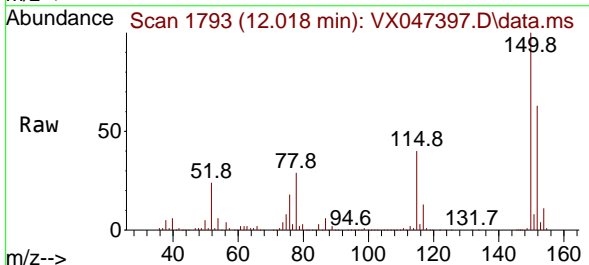
Instrument : MSVOA_X
 ClientSampleId : VNJ-210

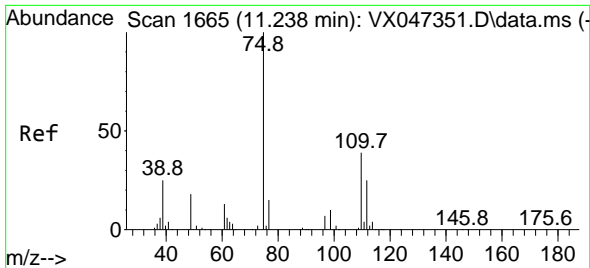
Tgt Ion:106 Resp: 3062
 Ion Ratio Lower Upper
 106 100
 91 225.5 110.6 331.8



#72
 1,4-Dichlorobenzene-d4
 Concen: 50.000 ug/l
 RT: 12.018 min Scan# 1793
 Delta R.T. 0.000 min
 Lab File: VX047397.D
 Acq: 18 Aug 2025 20:35

Tgt Ion:152 Resp: 264358
 Ion Ratio Lower Upper
 152 100
 115 61.9 44.6 133.8
 150 158.0 0.0 349.8

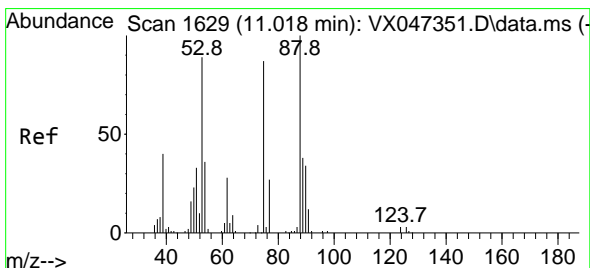
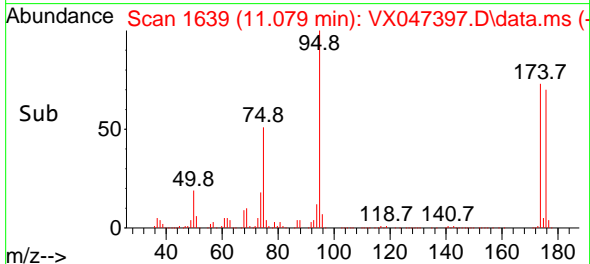
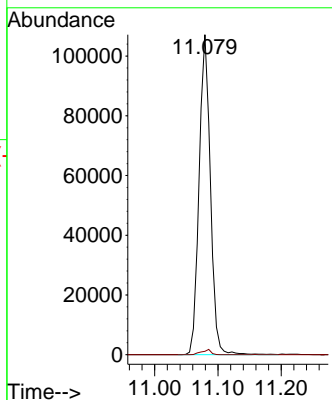
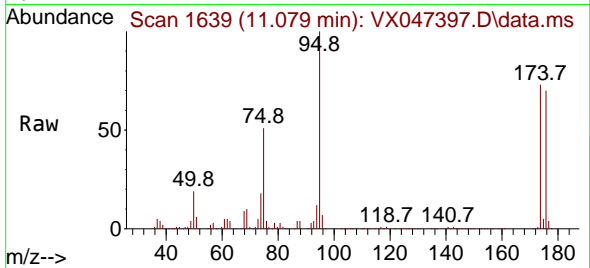




#76
 1,2,3-Trichloropropane
 Concen: 27.510 ug/l
 RT: 11.079 min Scan# 1639
 Delta R.T. -0.158 min
 Lab File: VX047397.D
 Acq: 18 Aug 2025 20:35

Instrument : MSVOA_X
 ClientSampleId : VNJ-210

Tgt Ion: 75 Resp: 133386
 Ion Ratio Lower Upper
 75 100
 77 1.4 19.4 58.2#



#81
 trans-1,4-Dichloro-2-butene
 Concen: 108.636 ug/l
 RT: 11.079 min Scan# 1639
 Delta R.T. 0.061 min
 Lab File: VX047397.D
 Acq: 18 Aug 2025 20:35

Tgt Ion: 75 Resp: 133386
 Ion Ratio Lower Upper
 75 100
 53 0.0 85.2 127.8#
 89 0.0 36.7 55.1#

