

Data Path : Z:\VOASRV\HPCHEM1\MSVOA X\DATA\VX081920\
 Data File : VX017991.D
 Acq On : 19 Aug 2020 17:36
 Operator : JC/SP
 Sample : L3721-04
 Misc : 5.0mL/MSVOA X/WATER
 ALS Vial : 22 Sample Multiplier: 1

Instrument :
 MSVOA_X
Client Sampled :
 E-LGC-6

Quant Time: Aug 20 04:20:27 2020
 Quant Method : Z:\VOASRV\HPCHEM1\MSVOA_X\METHOD\82X081920W.M
 Quant Title : SW846 8260
 QLast Update : Wed Aug 19 05:36:51 2020
 Response via : Initial Calibration

Internal Standards	R.T.	QIon	Response	Conc	Units	Dev(Min)
1) Pentafluorobenzene	5.63	168	454056	50.00	ug/l	0.00
34) 1,4-Difluorobenzene	6.83	114	770649	50.00	ug/l	-0.01
63) Chlorobenzene-d5	10.10	117	652014	50.00	ug/l	0.00
72) 1,4-Dichlorobenzene-d4	12.06	152	322006	50.00	ug/l	0.00

System Monitoring Compounds	R.T.	QIon	Response	Conc	Units	Dev(Min)
33) 1,2-Dichloroethane-d4	6.03	65	292414	43.93	ug/l	0.00
Spiked Amount				50.000		
Recovery						87.86%
35) Dibromofluoromethane	5.47	113	253295	44.14	ug/l	0.00
Spiked Amount				50.000		
Recovery						88.28%
50) Toluene-d8	8.70	98	911611	44.94	ug/l	0.00
Spiked Amount				50.000		
Recovery						89.88%
62) 4-Bromofluorobenzene	11.12	95	303799	40.55	ug/l	0.00
Spiked Amount				50.000		
Recovery						81.10%

Target Compounds	R.T.	QIon	Response	Conc	Units	Qvalue
2) Dichlorodifluoromethane	1.17	85	214	1.020	ug/l #	44
3) Chloromethane	1.32	50	4233	0.682	ug/l #	72
4) Vinyl Chloride	1.39	62	157	2.283	ug/l #	1
5) Bromomethane	1.64	94	3031	0.872	ug/l	93
8) Diethyl Ether	2.18	74	568	0.205	ug/l #	1
10) Methyl Iodide	2.50	142	2267	0.393	ug/l #	50
11) Tert butyl alcohol	3.01	59	5809	4.520	ug/l #	91
13) Acrolein	2.25	56	1703	2.509	ug/l #	54
14) Allyl chloride	2.68	41	31321	4.291	ug/l #	42
16) Acetone	2.42	43	1216581	464.594	ug/l	99
17) Carbon Disulfide	2.55	76	9551869	961.927	ug/l	99
18) Methyl Acetate	2.58	43	32291	4.901	ug/l #	52
20) Methylene Chloride	2.83	84	4551	0.943	ug/l #	91
25) 2-Butanone	4.64	43	77231	19.481	ug/l	98
29) Tetrahydrofuran	5.10	42	9323	3.787	ug/l	88
30) Chloroform	5.18	83	2740	0.296	ug/l	91
36) 1,1-Dichloropropene	5.63	75	32710	5.071	ug/l #	53
37) Ethyl Acetate	4.64	43	77231	10.007	ug/l #	70
38) Carbon Tetrachloride	5.63	117	47275	5.663	ug/l #	15
39) Methylcyclohexane	7.42	83	128	0.828	ug/l #	33
40) Benzene	6.12	78	107589	5.538	ug/l	100
49) 1,4-Dioxane	7.71	88	111	0.878	ug/l #	1
52) Toluene	8.77	92	29573	2.327	ug/l	97
55) 1,1,2-Trichloroethane	9.06	97	11575	1.982	ug/l #	18
58) 2-Chloroethyl Vinyl ether	8.47	63	34862	8.720	ug/l #	46
67) Ethyl Benzene	10.24	91	15798	0.740	ug/l	98
68) m/p-Xylenes	10.34	106	30637	3.730	ug/l	100
69) o-Xylene	10.68	106	17931	2.264	ug/l	98
74) N-amyl acetate	10.80	43	72109	7.822	ug/l #	49
76) 1,2,3-Trichloropropane	11.12	75	158865	23.199	ug/l #	35
78) n-propylbenzene	11.35	91	10606	0.438	ug/l	99
79) 2-Chlorotoluene	11.42	91	7665	0.519	ug/l #	41
80) 1,3,5-Trimethylbenzene	11.49	105	18069	0.993	ug/l	98
81) trans-1,4-Dichloro-2-buten	11.12	75	158865	60.946	ug/l #	12

Data Path : Z:\VOASRV\HPCHEM1\MSVOA X\DATA\VX081920\
Data File : VX017991.D
Acq On : 19 Aug 2020 17:36
Operator : JC/SP
Sample : L3721-04
Misc : 5.0mL/MSVOA X/WATER
ALS Vial : 22 Sample Multiplier: 1

Instrument :
MSVOA_X
ClientSampleId :
E-LGC-6

Quant Time: Aug 20 04:20:27 2020
Quant Method : Z:\VOASRV\HPCHEM1\MSVOA_X\METHOD\82X081920W.M
Quant Title : SW846 8260
QLast Update : Wed Aug 19 05:36:51 2020
Response via : Initial Calibration

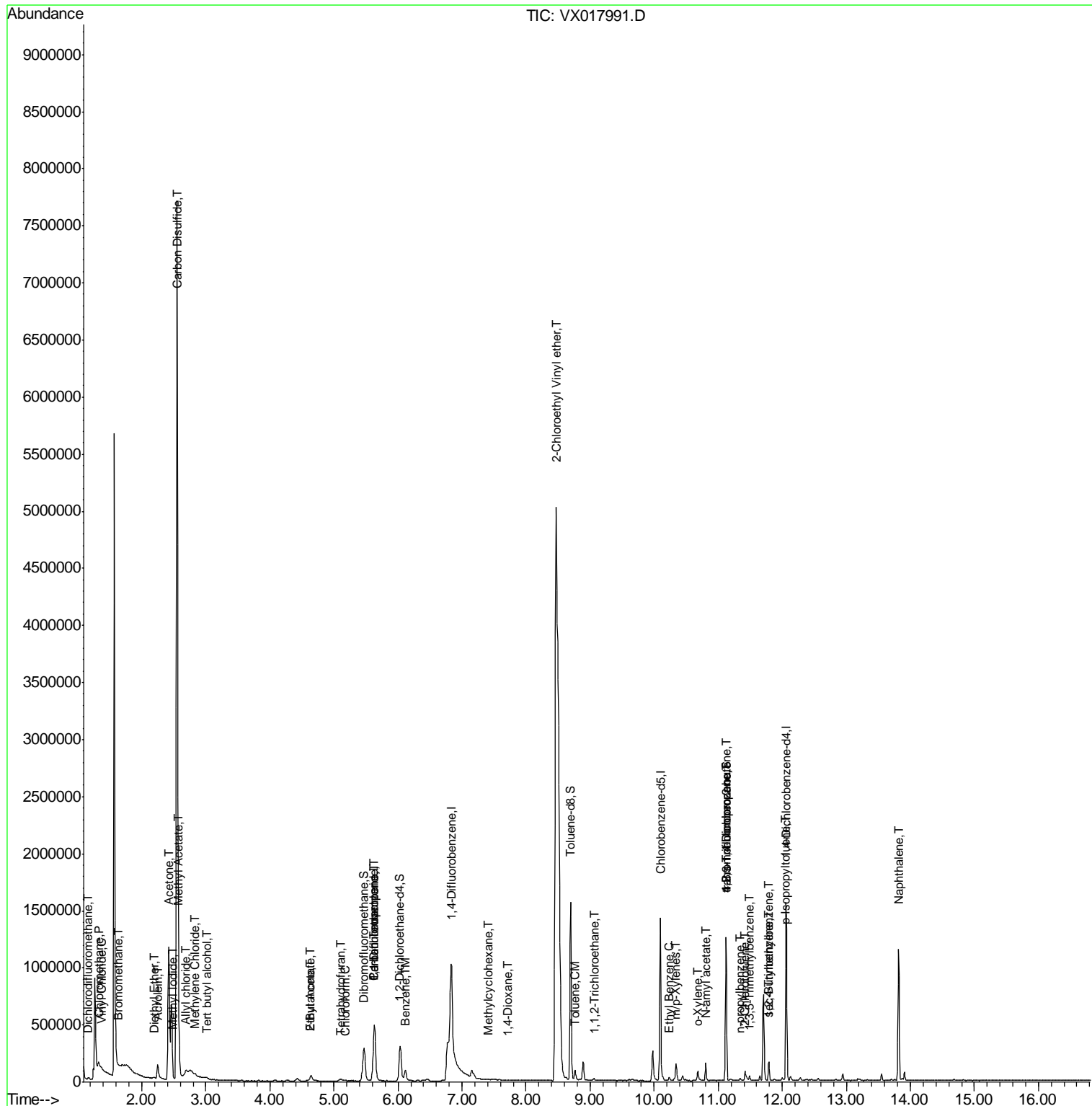
Internal Standards	R.T.	QIon	Response	Conc	Units	Dev(Min)
84) 1,2,4-Trimethylbenzene	11.79	105	71203	3.780	ug/l	100
85) sec-Butylbenzene	11.79	105	71203	3.433	ug/l #	56
86) p-Isopropyltoluene	12.05	119	3922	0.203	ug/l #	58
95) Naphthalene	13.82	128	682395	34.012	ug/l	100

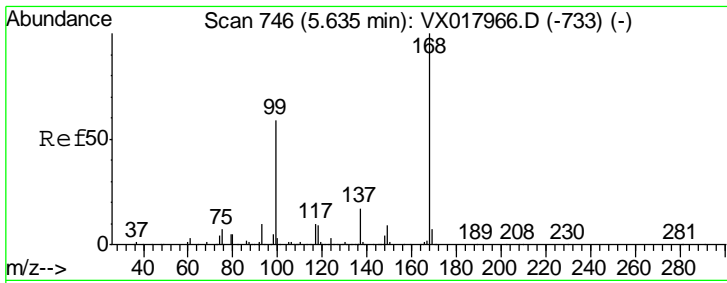
(#) = qualifier out of range (m) = manual integration (+) = signals summed

Data Path : Z:\VOASRV\HPCHEM1\MSVOA X\DATA\VX081920\
 Data File : VX017991.D
 Acq On : 19 Aug 2020 17:36
 Operator : JC/SP
 Sample : L3721-04
 Misc : 5.0mL/MSVOA X/WATER
 ALS Vial : 22 Sample Multiplier: 1

Instrument :
 MSVOA_X
 Client Sampled :
 E-LGC-6

Quant Time: Aug 20 04:20:27 2020
 Quant Method : Z:\VOASRV\HPCHEM1\MSVOA_X\METHOD\82X081920W.M
 Quant Title : SW846 8260
 QLast Update : Wed Aug 19 05:36:51 2020
 Response via : Initial Calibration

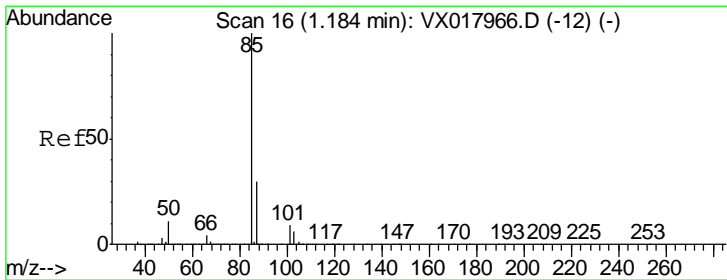
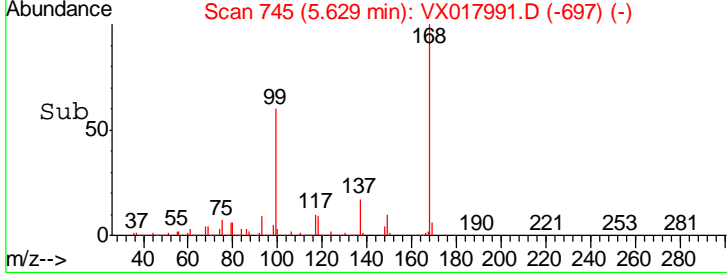
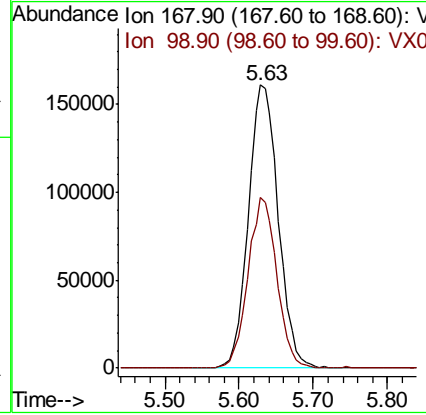
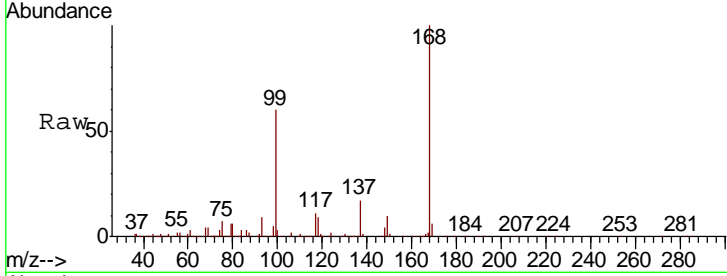




#1
 Pentafluorobenzene
 Concen: 50.000 ug/l
 RT: 5.63 min Scan# 745
 Delta R.T. -0.01 min
 Lab File: VX017991.D
 Acq: 19 Aug 2020 17:36

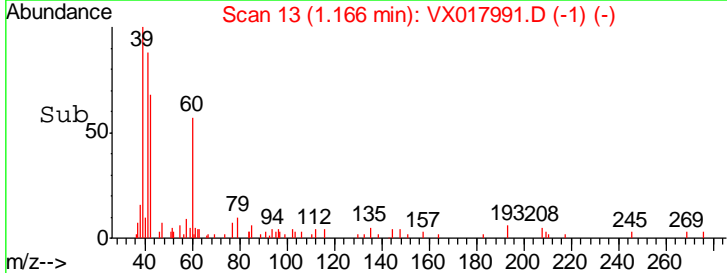
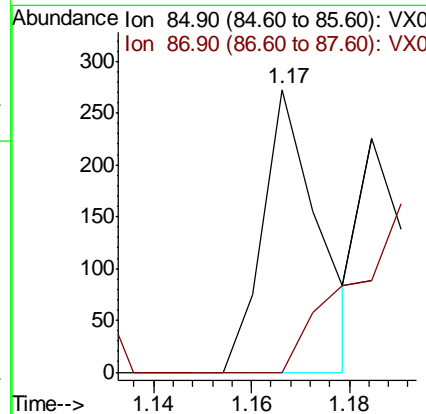
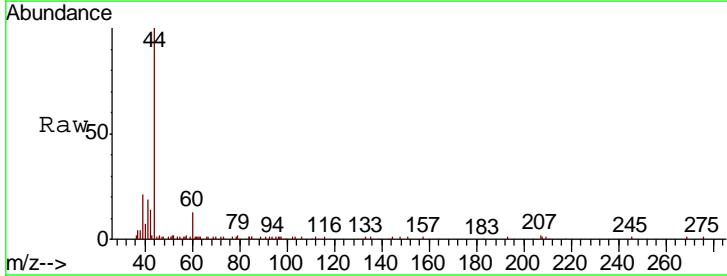
Instrument :
 MSVOA_X
 Client Sampled :
 E-LGC-6

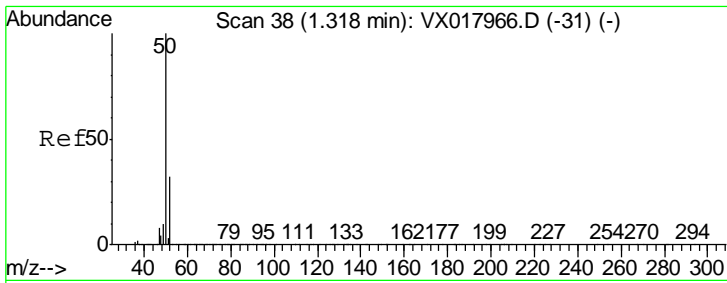
Tgt Ion	Resp	Lower	Upper
168	100		
99	60.2	47.4	71.2



#2
 Dichlorodifluoromethane
 Concen: 1.020 ug/l
 RT: 1.17 min Scan# 13
 Delta R.T. -0.02 min
 Lab File: VX017991.D
 Acq: 19 Aug 2020 17:36

Tgt Ion	Resp	Lower	Upper
85	100		
87	0.0	15.3	45.8#

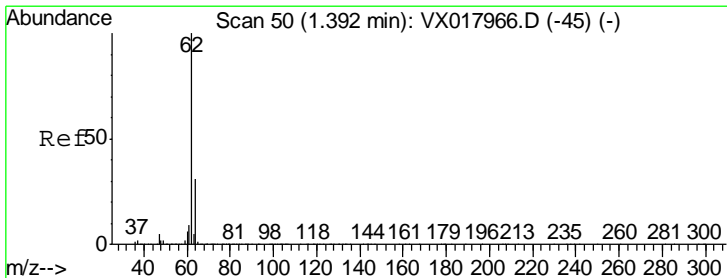
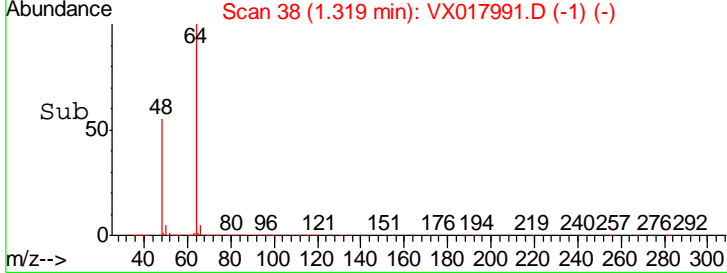
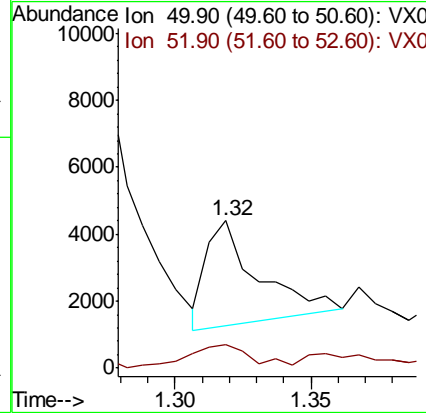
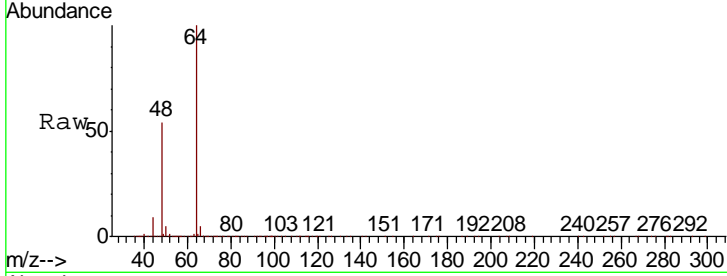




#3
 Chloromethane
 Concen: 0.682 ug/l
 RT: 1.32 min Scan# 38
 Delta R.T. 0.00 min
 Lab File: VX017991.D
 Acq: 19 Aug 2020 17:36

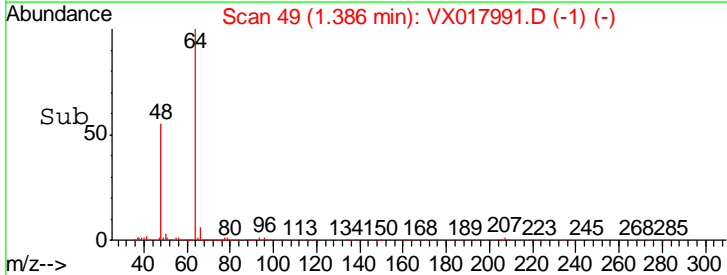
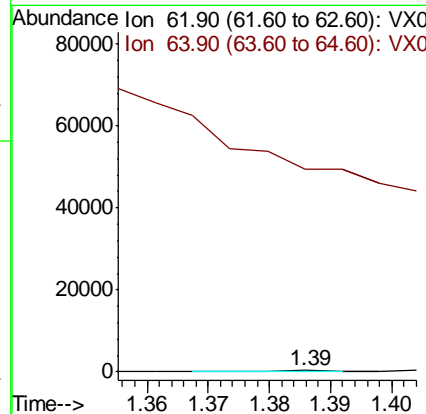
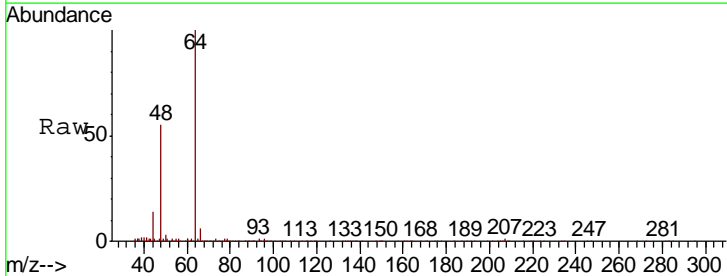
Instrument : MSVOA_X
 ClientSampled : E-LGC-6

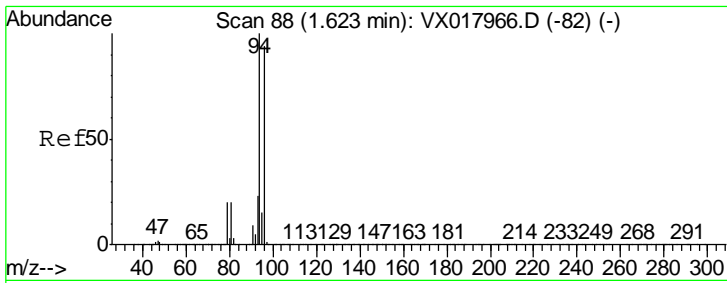
Tgt Ion	Resp	Lower	Upper
50	4233		
52	16.0	25.4	38.0#



#4
 Vinyl Chloride
 Concen: 2.283 ug/l
 RT: 1.39 min Scan# 49
 Delta R.T. -0.01 min
 Lab File: VX017991.D
 Acq: 19 Aug 2020 17:36

Tgt Ion	Resp	Lower	Upper
62	157		
64	98.3	24.7	37.1#

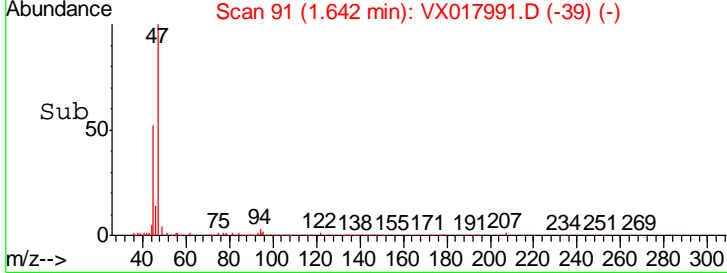
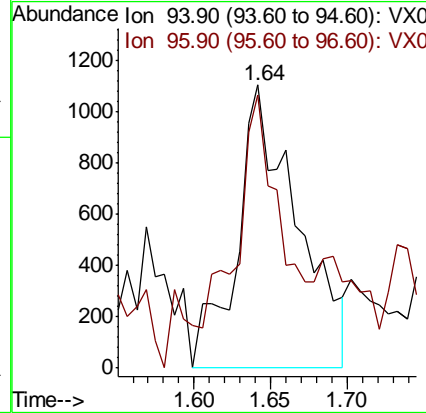
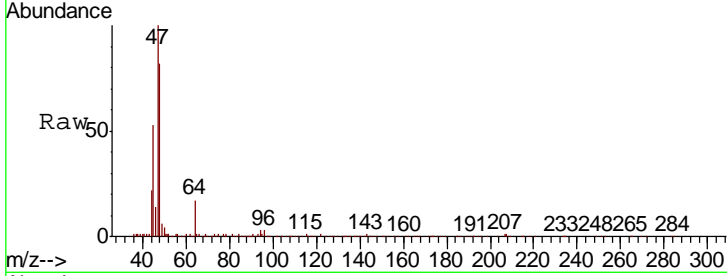




#5
 Bromomethane
 Concen: 0.872 ug/l
 RT: 1.64 min Scan# 91
 Delta R.T. 0.02 min
 Lab File: VX017991.D
 Acq: 19 Aug 2020 17:36

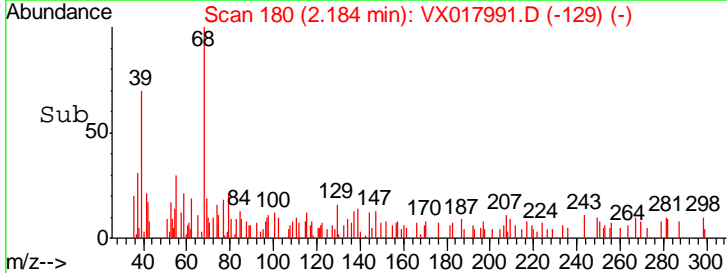
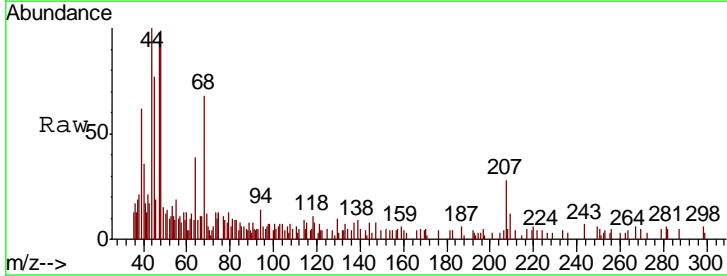
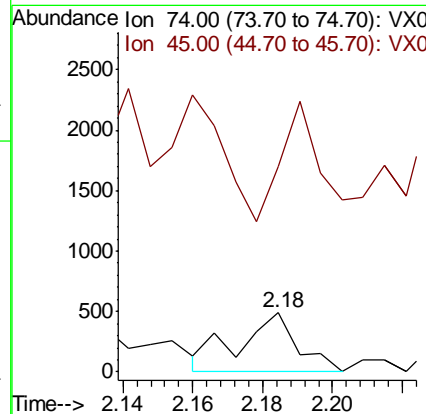
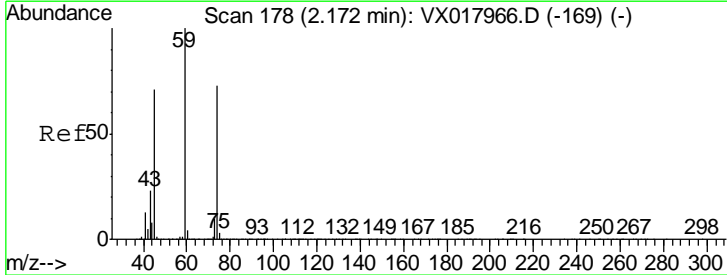
Instrument :
 MSVOA_X
 ClientSampled :
 E-LGC-6

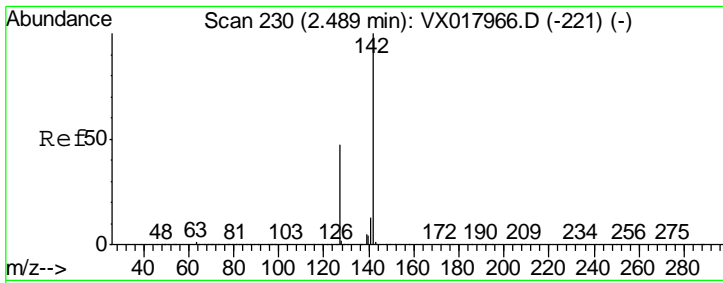
Tgt Ion	Resp	Lower	Upper
94	100		
96	87.6	75.5	113.3



#8
 Diethyl Ether
 Concen: 0.205 ug/l
 RT: 2.18 min Scan# 180
 Delta R.T. 0.01 min
 Lab File: VX017991.D
 Acq: 19 Aug 2020 17:36

Tgt Ion	Resp	Lower	Upper
74	100		
45	0.0	50.5	151.6#

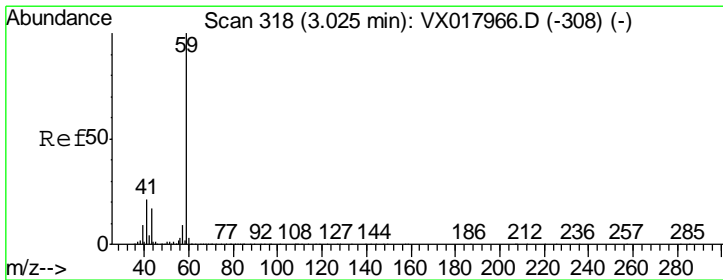
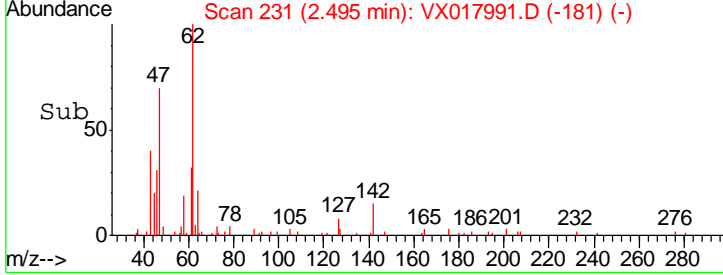
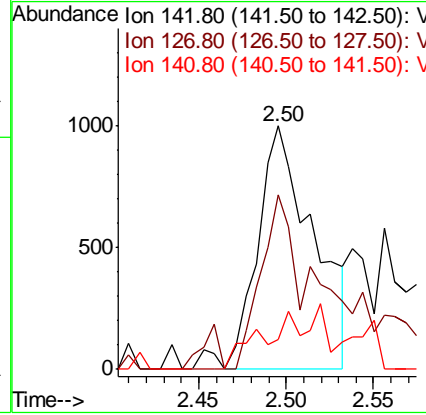
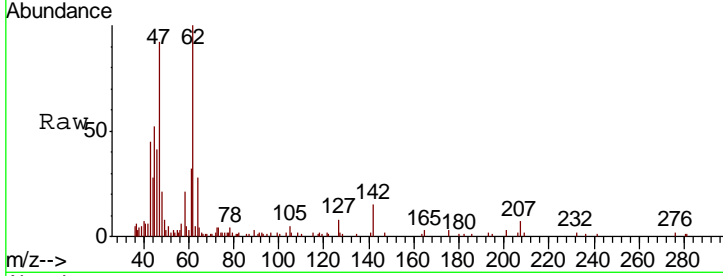




#10
Methyl Iodide
Concen: 0.393 ug/l
RT: 2.50 min Scan# 231
Delta R.T. 0.01 min
Lab File: VX017991.D
Acq: 19 Aug 2020 17:36

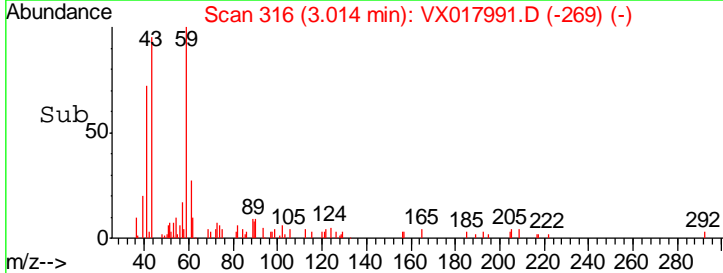
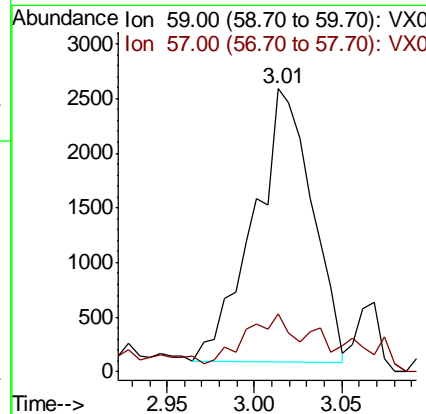
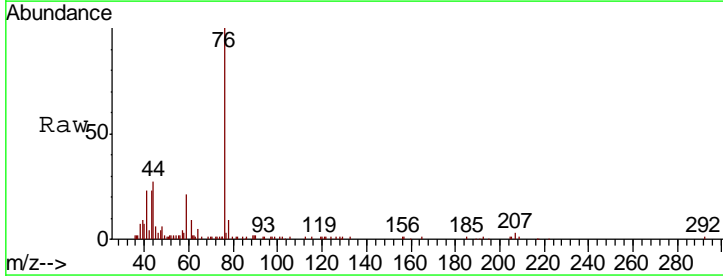
Instrument :
MSVOA_X
ClientSampled :
E-LGC-6

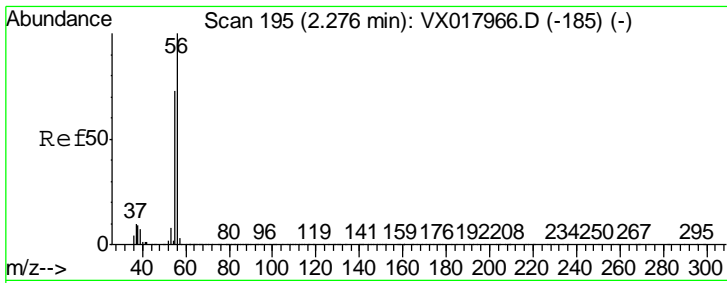
Tgt Ion	Resp	Lower	Upper
142	100		
127	88.8	38.0	57.0#
141	18.3	11.2	16.8#



#11
Tert butyl alcohol
Concen: 4.520 ug/l
RT: 3.01 min Scan# 316
Delta R.T. -0.01 min
Lab File: VX017991.D
Acq: 19 Aug 2020 17:36

Tgt Ion	Resp	Lower	Upper
59	100		
57	14.2	8.6	13.0#

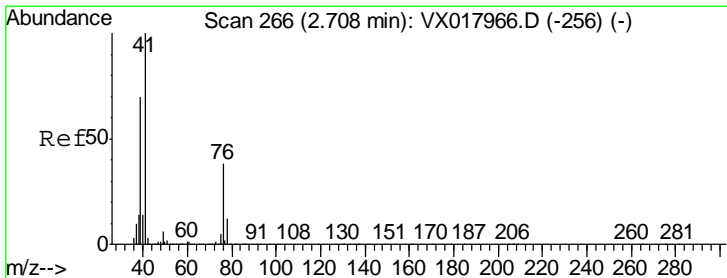
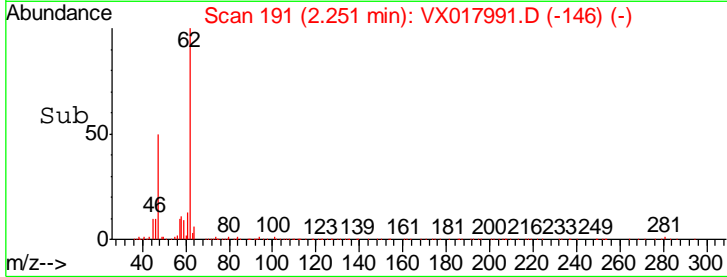
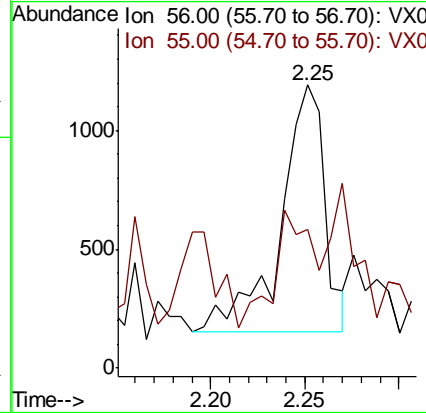
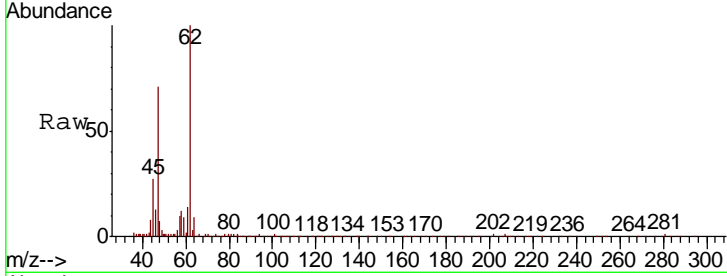




#13
 Acrolein
 Concen: 2.509 ug/l
 RT: 2.25 min Scan# 191
 Delta R.T. -0.02 min
 Lab File: VX017991.D
 Acq: 19 Aug 2020 17:36

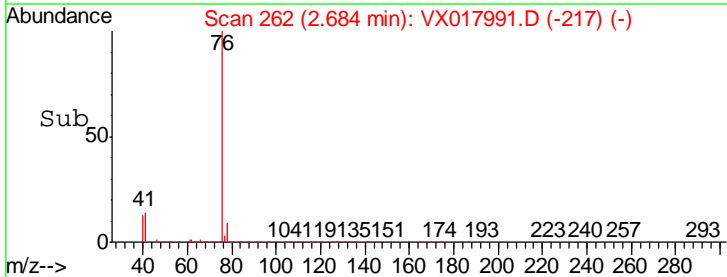
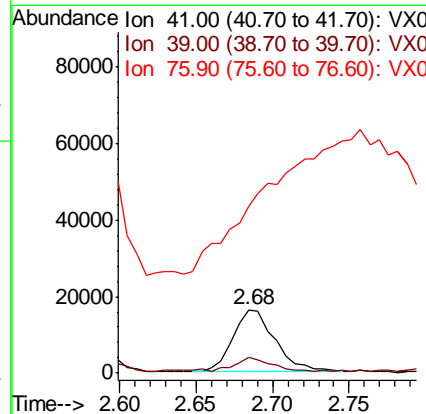
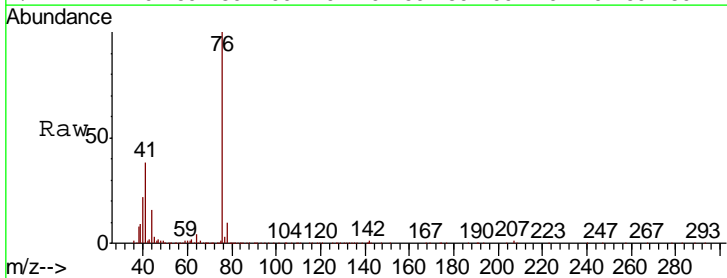
Instrument :
 MSVOA_X
 ClientSampled :
 E-LGC-6

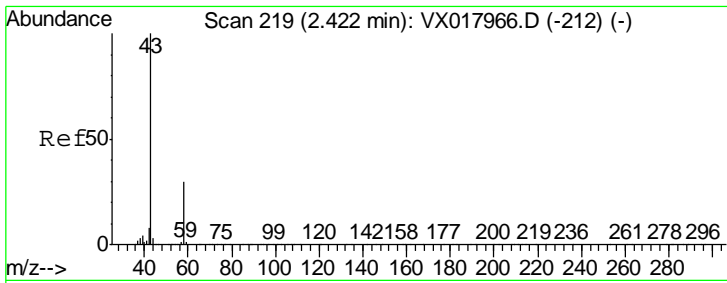
Tgt Ion	Resp	Lower	Upper
56	1703		
55	33.9	58.2	87.4#



#14
 Allyl chloride
 Concen: 4.291 ug/l
 RT: 2.68 min Scan# 262
 Delta R.T. -0.02 min
 Lab File: VX017991.D
 Acq: 19 Aug 2020 17:36

Tgt Ion	Resp	Lower	Upper
41	31321		
39	18.6	51.7	77.5#
76	0.0	26.3	39.5#

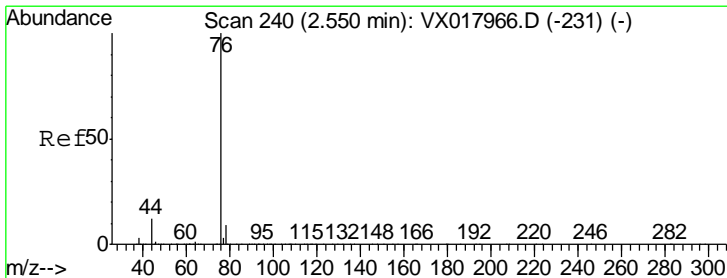
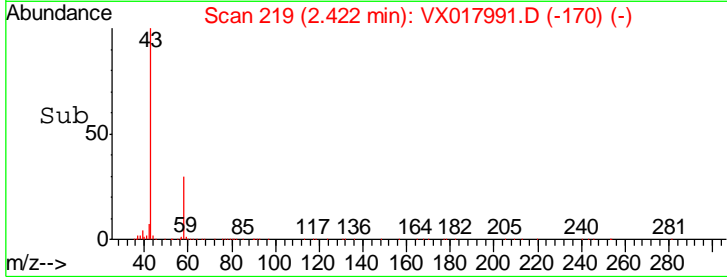
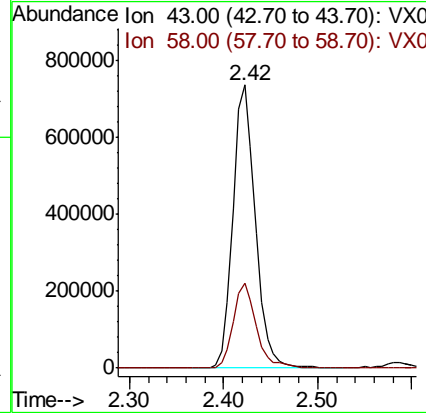




#16
 Acetone
 Concen: 464.594 ug/l
 RT: 2.42 min Scan# 219
 Delta R.T. 0.00 min
 Lab File: VX017991.D
 Acq: 19 Aug 2020 17:36

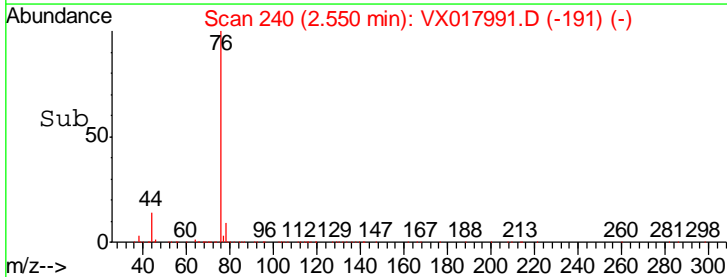
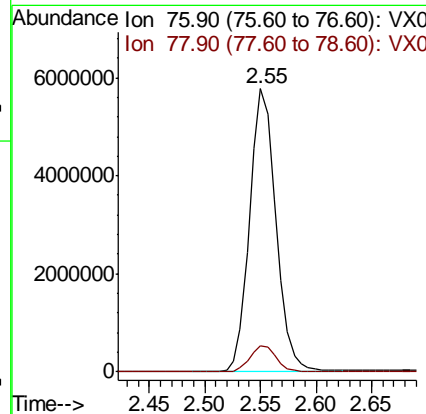
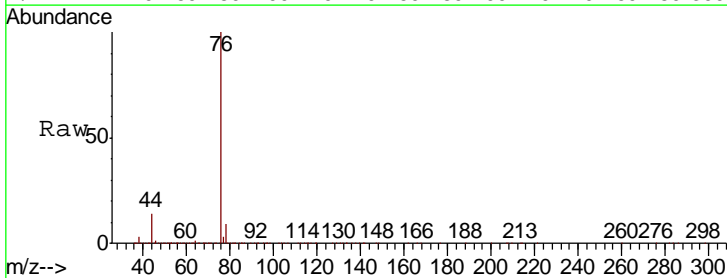
Instrument :
 MSVOA_X
 ClientSampled :
 E-LGC-6

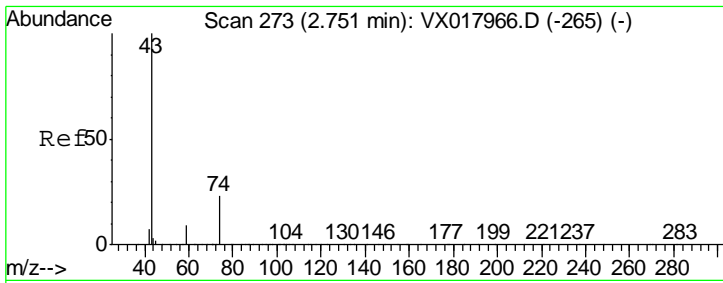
Tgt Ion: 43 Resp: 1216581
 Ion Ratio Lower Upper
 43 100
 58 30.2 23.8 35.8



#17
 Carbon Disulfide
 Concen: 961.927 ug/l
 RT: 2.55 min Scan# 240
 Delta R.T. 0.00 min
 Lab File: VX017991.D
 Acq: 19 Aug 2020 17:36

Tgt Ion: 76 Resp: 9551869
 Ion Ratio Lower Upper
 76 100
 78 9.4 7.3 10.9

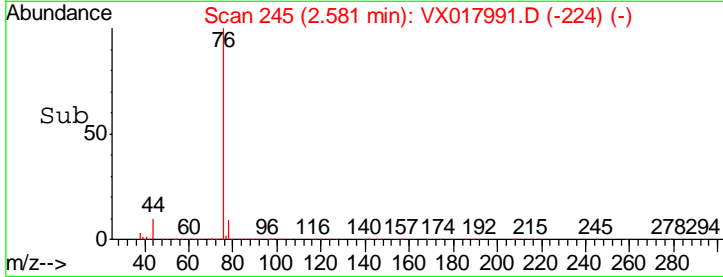
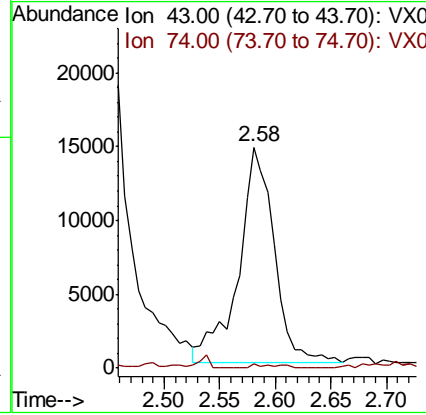
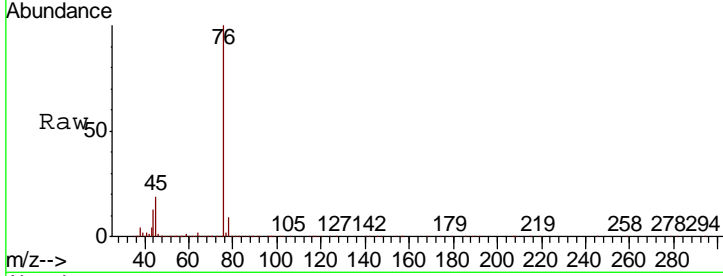




#18
 Methyl Acetate
 Concen: 4.901 ug/l
 RT: 2.58 min Scan# 245
 Delta R.T. -0.17 min
 Lab File: VX017991.D
 Acq: 19 Aug 2020 17:36

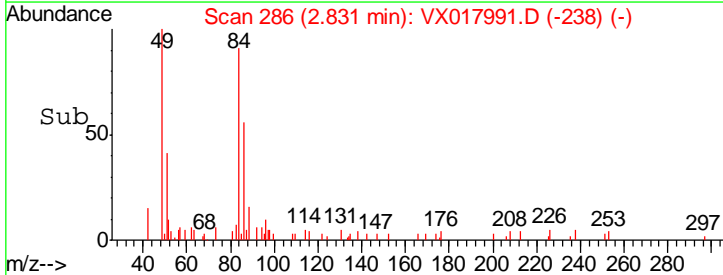
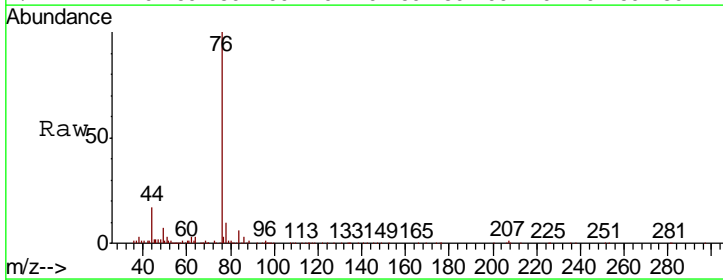
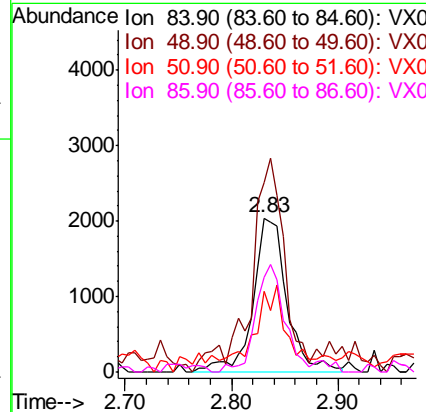
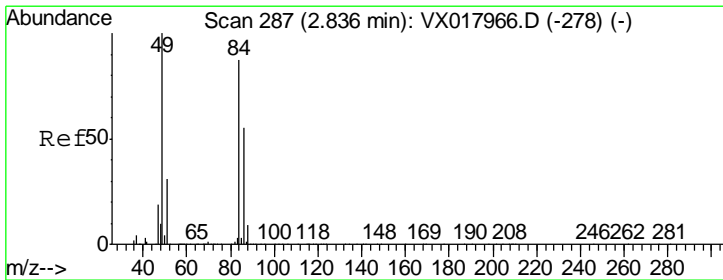
Instrument :
 MSVOA_X
 ClientSampled :
 E-LGC-6

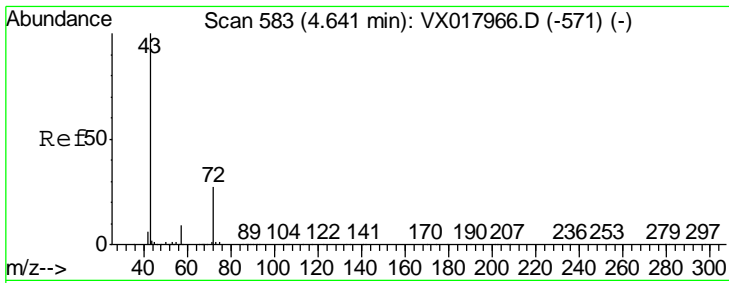
Tgt Ion	Resp	Lower	Upper
43	100		
74	0.9	19.7	29.5#



#20
 Methylene Chloride
 Concen: 0.943 ug/l
 RT: 2.83 min Scan# 286
 Delta R.T. -0.01 min
 Lab File: VX017991.D
 Acq: 19 Aug 2020 17:36

Tgt Ion	Resp	Lower	Upper
84	100		
49	123.4	91.8	137.6
51	47.8	27.8	41.8#
86	61.7	50.5	75.7

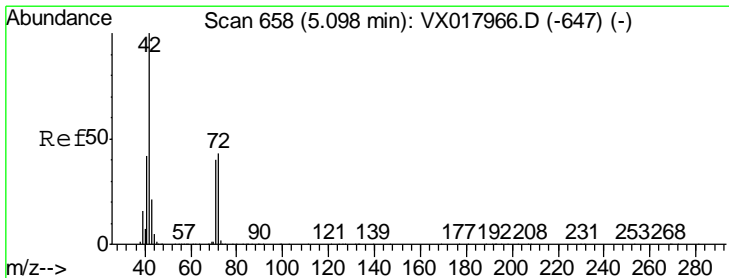
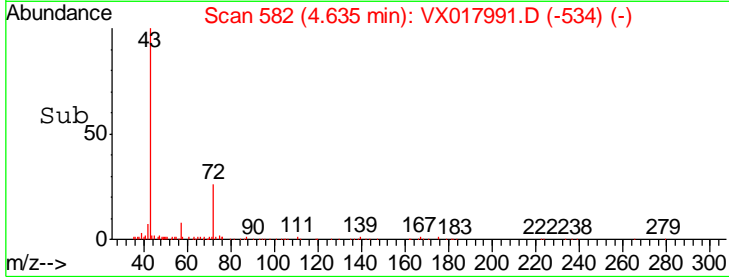
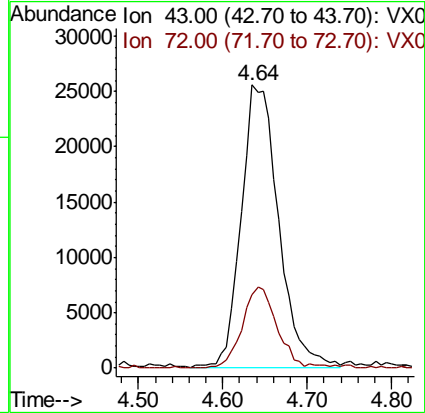
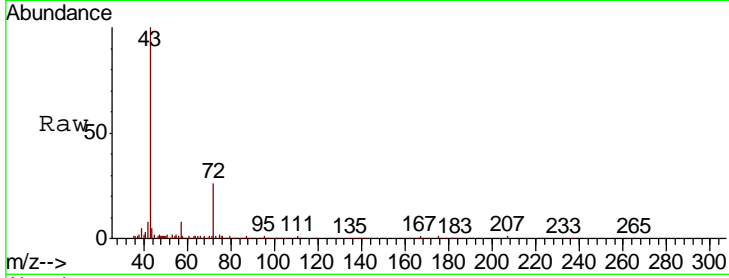




#25
 2-Butanone
 Concen: 19.481 ug/l
 RT: 4.64 min Scan# 582
 Delta R.T. -0.01 min
 Lab File: VX017991.D
 Acq: 19 Aug 2020 17:36

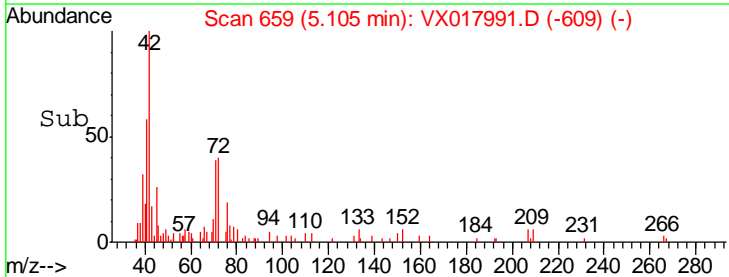
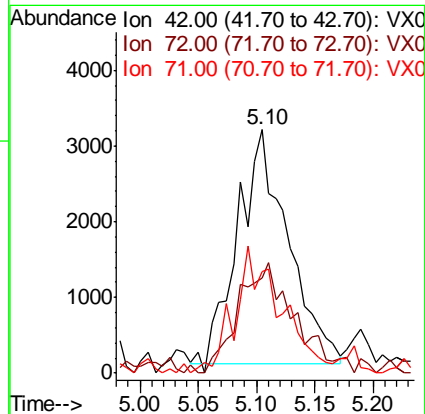
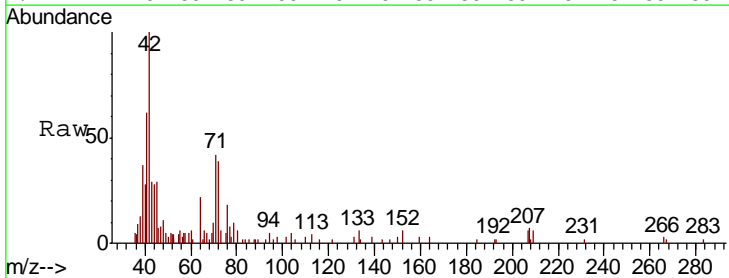
Instrument :
 MSVOA_X
 ClientSampled :
 E-LGC-6

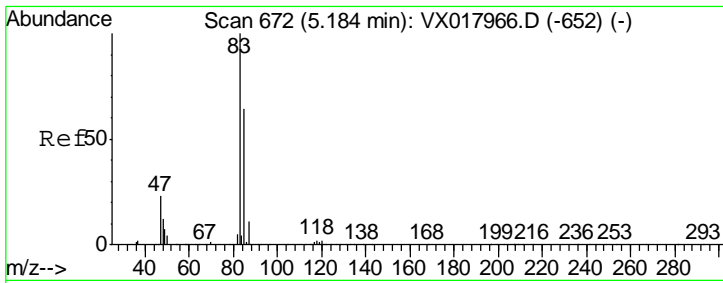
Tgt Ion: 43 Resp: 77231
 Ion Ratio Lower Upper
 43 100
 72 25.7 21.4 32.2



#29
 Tetrahydrofuran
 Concen: 3.787 ug/l
 RT: 5.10 min Scan# 659
 Delta R.T. 0.01 min
 Lab File: VX017991.D
 Acq: 19 Aug 2020 17:36

Tgt Ion: 42 Resp: 9323
 Ion Ratio Lower Upper
 42 100
 72 52.4 35.9 53.9
 71 49.0 33.0 49.4

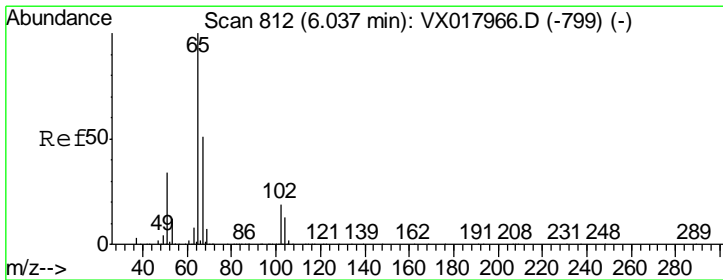
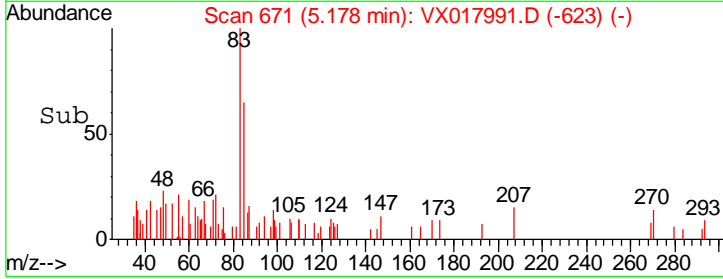
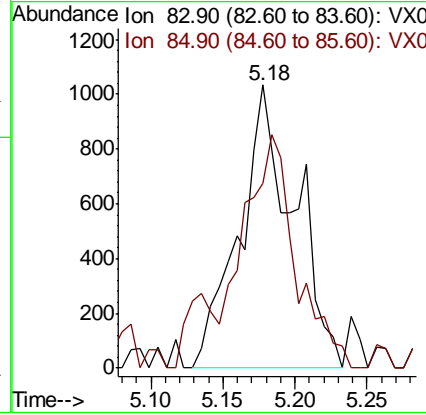
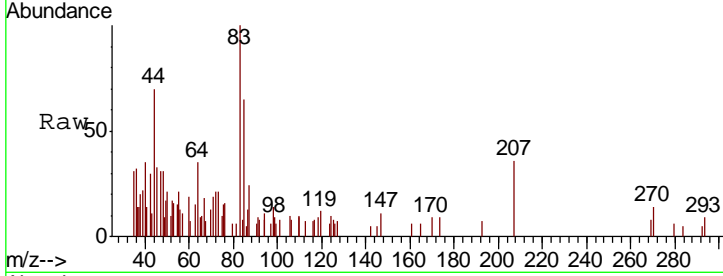




#30
 Chloroform
 Concen: 0.296 ug/l
 RT: 5.18 min Scan# 671
 Delta R.T. -0.01 min
 Lab File: VX017991.D
 Acq: 19 Aug 2020 17:36

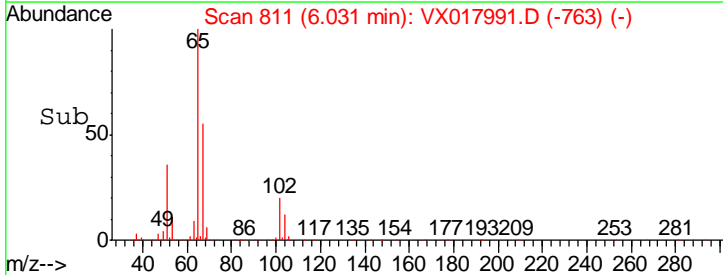
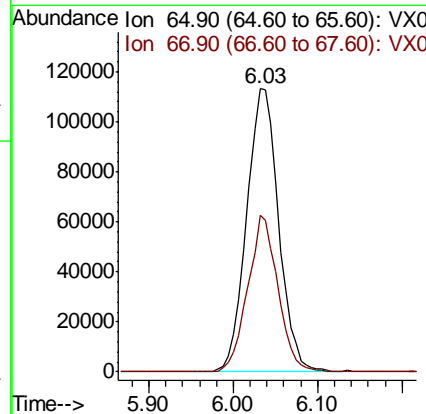
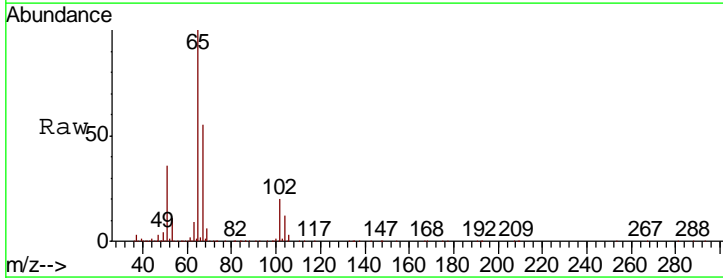
Instrument :
 MSVOA_X
 ClientSampled :
 E-LGC-6

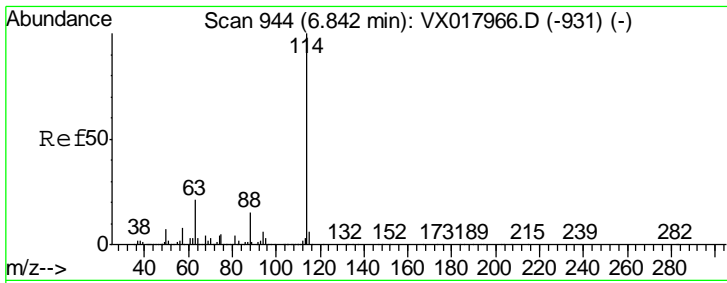
Tgt Ion	Resp	Lower	Upper
83	100		
85	57.3	51.3	76.9



#33
 1,2-Dichloroethane-d4
 Concen: 43.932 ug/l
 RT: 6.03 min Scan# 811
 Delta R.T. -0.01 min
 Lab File: VX017991.D
 Acq: 19 Aug 2020 17:36

Tgt Ion	Resp	Lower	Upper
65	100		
67	51.9	0.0	103.0

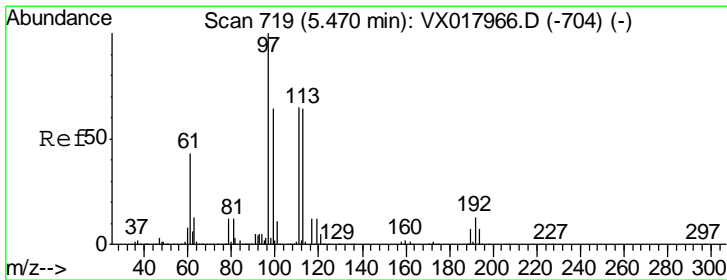
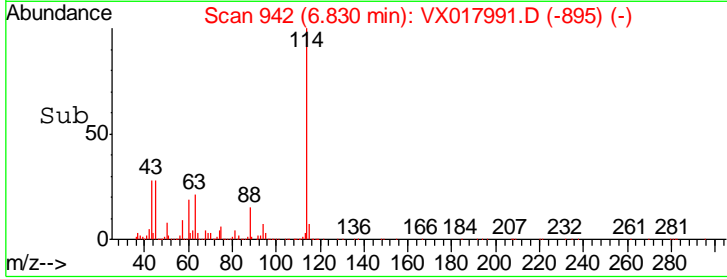
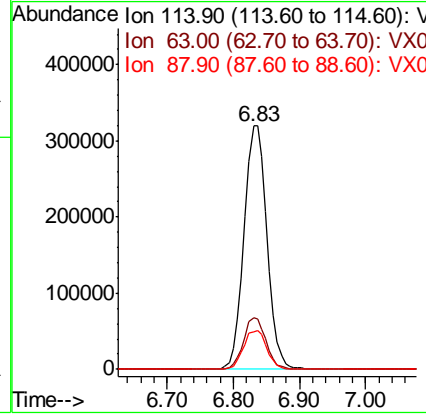
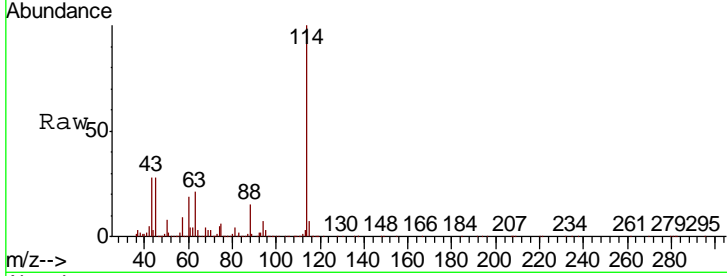




#34
 1,4-Difluorobenzene
 Concen: 50.000 ug/l
 RT: 6.83 min Scan# 942
 Delta R.T. -0.01 min
 Lab File: VX017991.D
 Acq: 19 Aug 2020 17:36

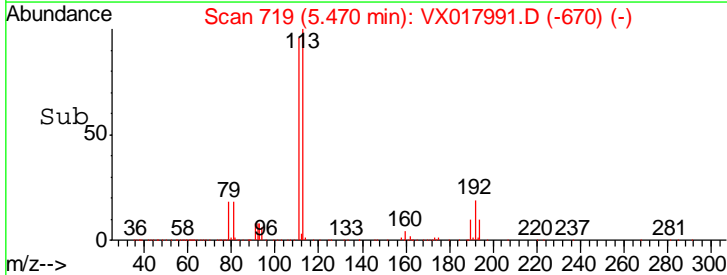
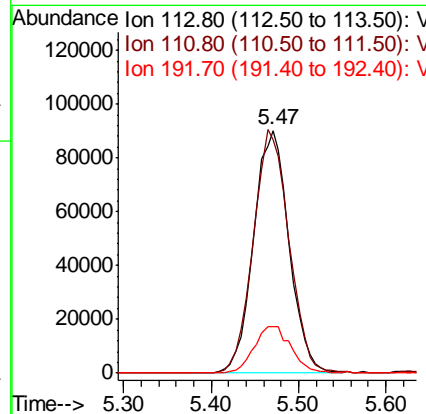
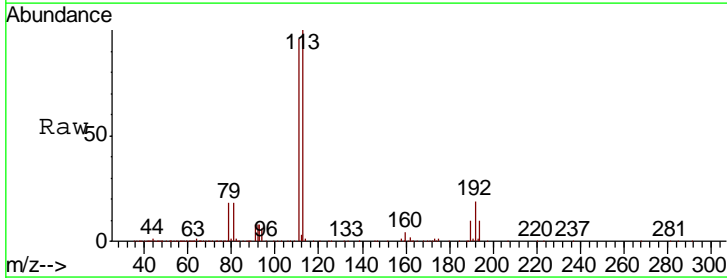
Instrument :
 MSVOA_X
 ClientSampled :
 E-LGC-6

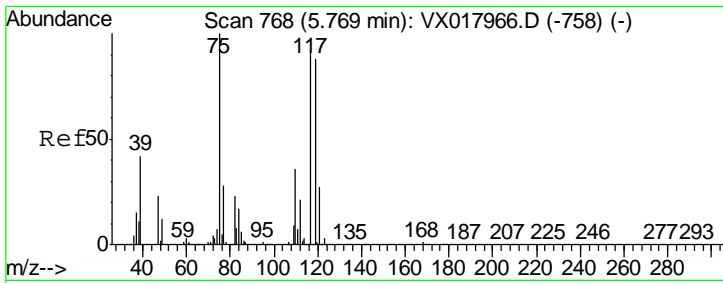
Tgt Ion	Resp	Lower	Upper
114	100		
63	21.2	0.0	42.6
88	15.3	0.0	30.2



#35
 Dibromofluoromethane
 Concen: 44.137 ug/l
 RT: 5.47 min Scan# 719
 Delta R.T. 0.00 min
 Lab File: VX017991.D
 Acq: 19 Aug 2020 17:36

Tgt Ion	Resp	Lower	Upper
113	100		
111	101.2	83.5	125.3
192	19.9	16.2	24.4

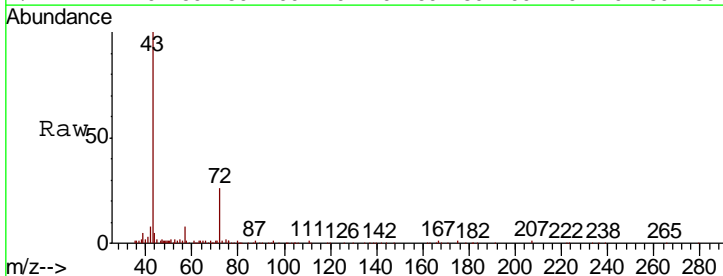
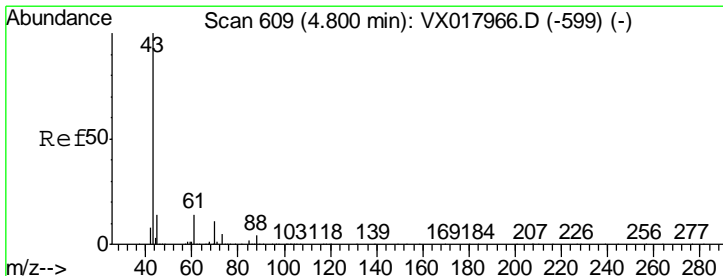
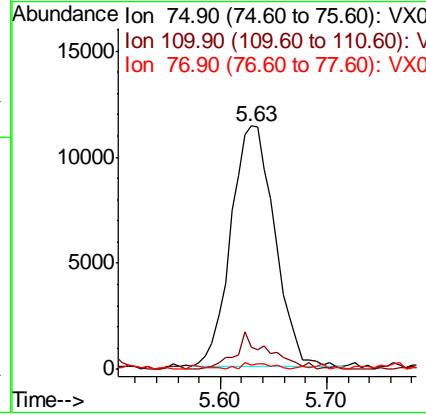
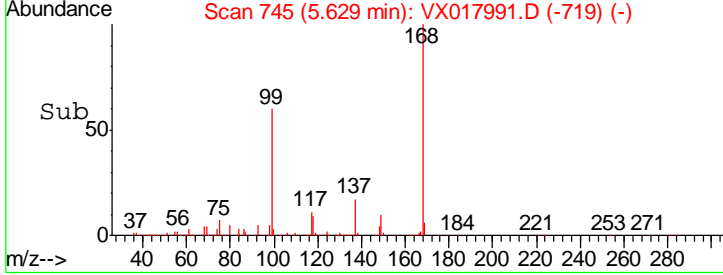
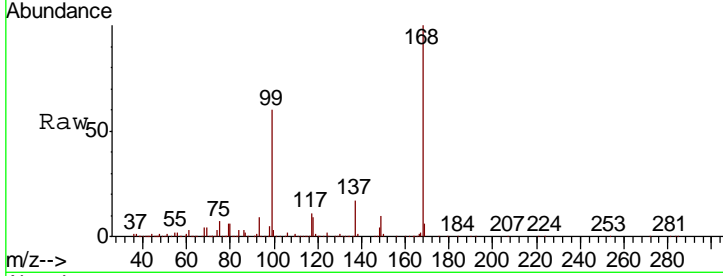




#36
 1,1-Dichloropropene
 Concen: 5.071 ug/l
 RT: 5.63 min Scan# 745
 Delta R.T. -0.14 min
 Lab File: VX017991.D
 Acq: 19 Aug 2020 17:36

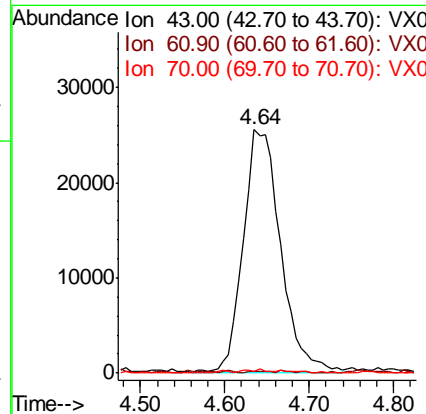
Instrument :
 MSVOA_X
 ClientSampled :
 E-LGC-6

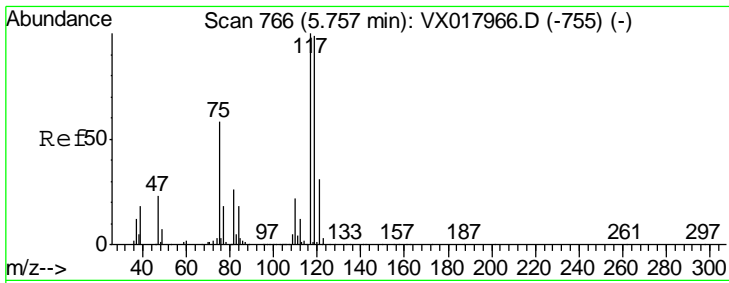
Tgt Ion	Resp	Lower	Upper
75	32710		
110	11.9	18.7	56.1#
77	1.7	24.4	36.6#



#37
 Ethyl Acetate
 Concen: 10.007 ug/l
 RT: 4.64 min Scan# 582
 Delta R.T. -0.16 min
 Lab File: VX017991.D
 Acq: 19 Aug 2020 17:36

Tgt Ion	Resp	Lower	Upper
43	77231		
61	0.4	11.3	16.9#
70	0.8	8.5	12.7#

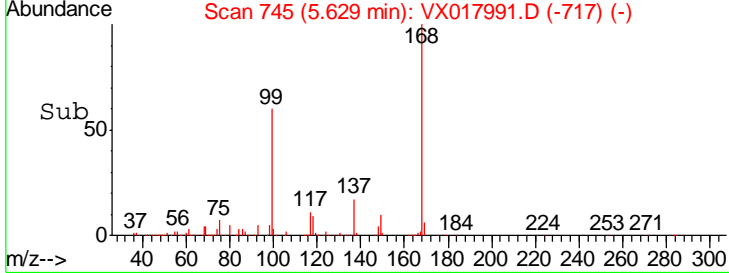
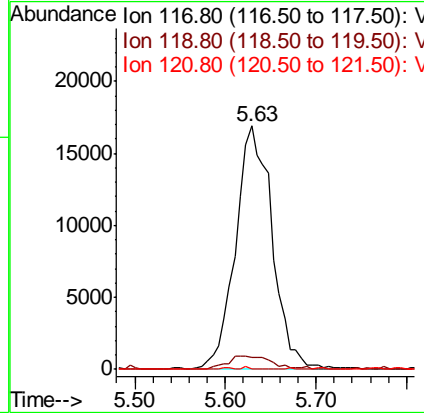
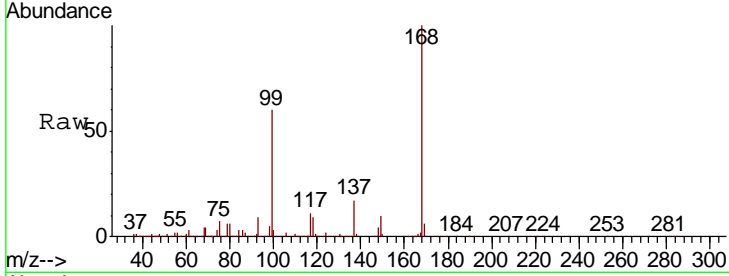




#38
 Carbon Tetrachloride
 Concen: 5.663 ug/l
 RT: 5.63 min Scan# 745
 Delta R.T. -0.13 min
 Lab File: VX017991.D
 Acq: 19 Aug 2020 17:36

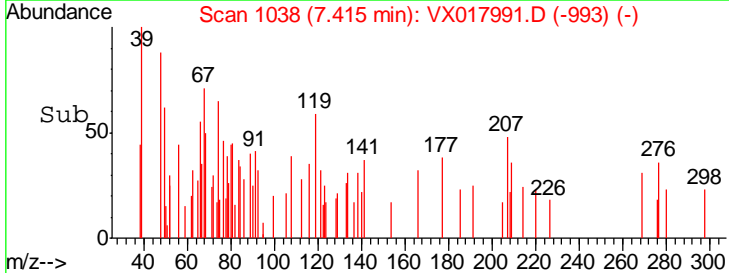
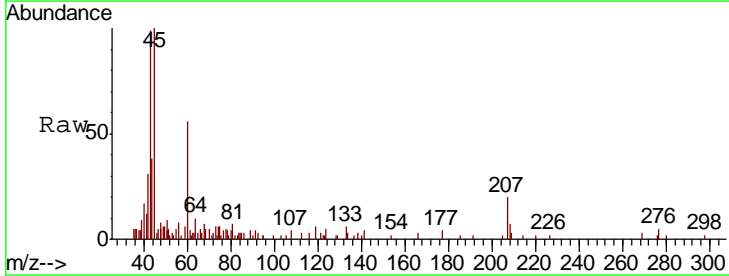
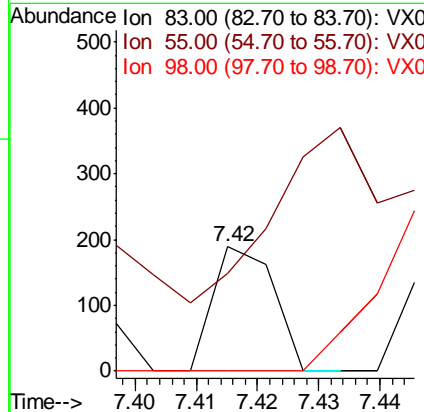
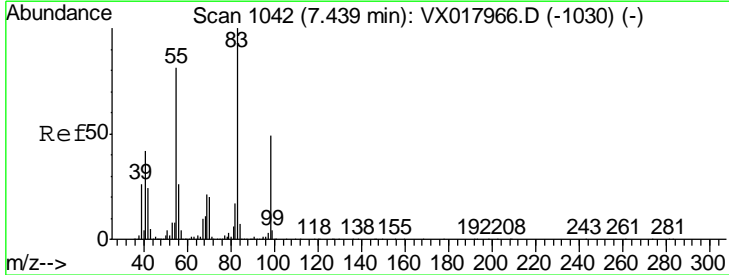
Instrument : MSVOA_X
 Client Sampled : E-LGC-6

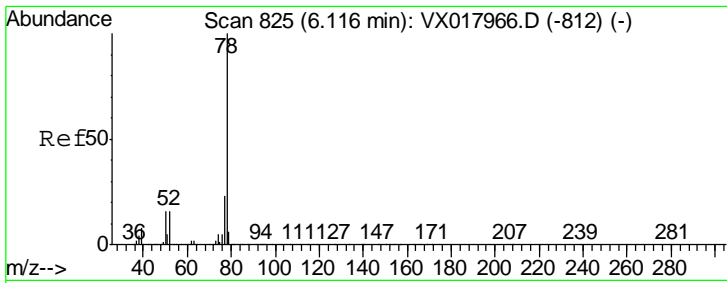
Tgt Ion	Resp	Lower	Upper
117	100		
119	5.0	79.0	118.6#
121	0.3	24.7	37.1#



#39
 Methylcyclohexane
 Concen: 0.828 ug/l
 RT: 7.42 min Scan# 1038
 Delta R.T. -0.02 min
 Lab File: VX017991.D
 Acq: 19 Aug 2020 17:36

Tgt Ion	Resp	Lower	Upper
83	100		
55	24.3	64.5	96.7#
98	0.0	39.0	58.6#

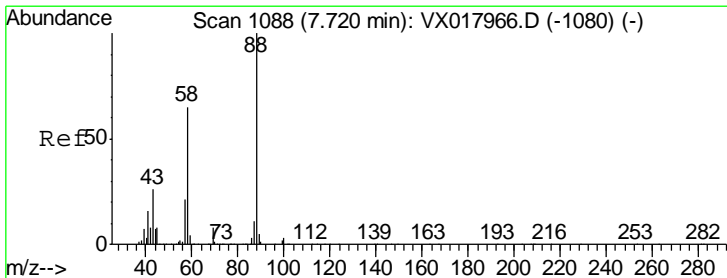
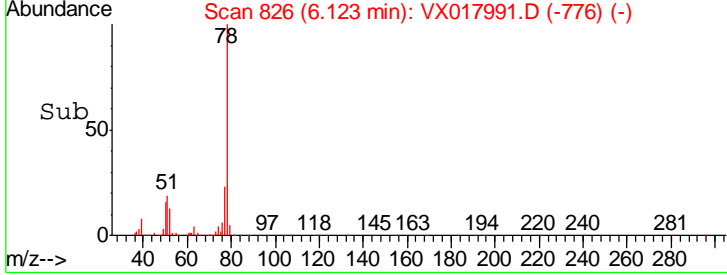
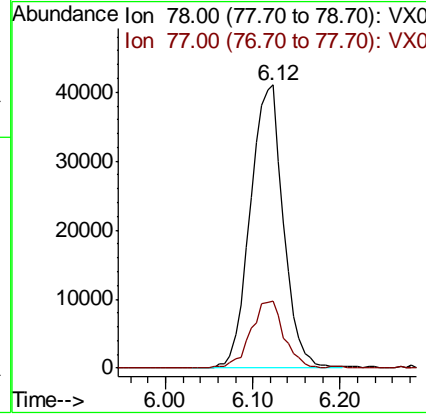
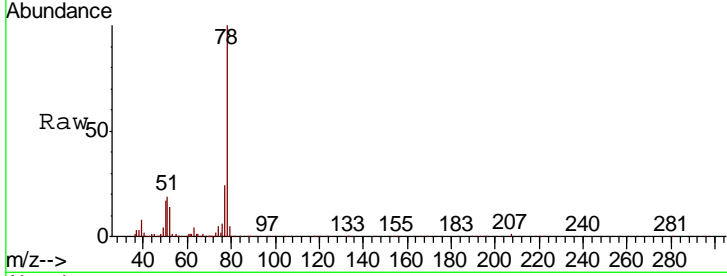




#40
Benzene
Concen: 5.538 ug/l
RT: 6.12 min Scan# 826
Delta R.T. 0.01 min
Lab File: VX017991.D
Acq: 19 Aug 2020 17:36

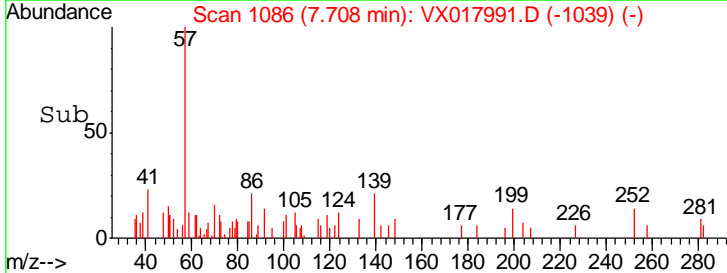
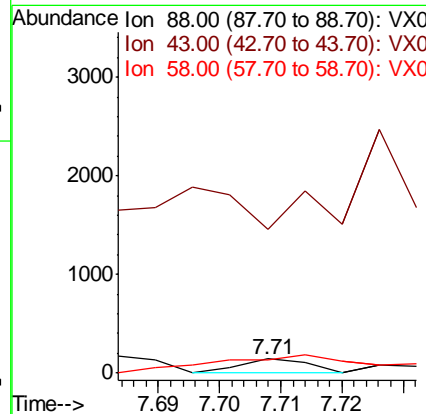
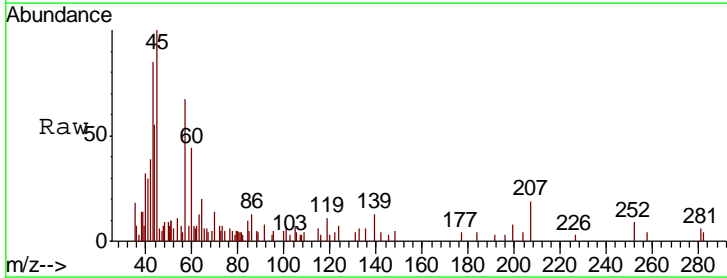
Instrument : MSVOA_X
Client Sampled : E-LGC-6

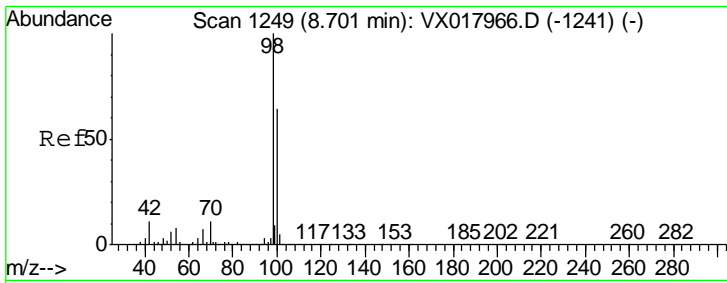
Tgt Ion	Resp	Lower	Upper
78	107589		
77	23.5	18.8	28.2



#49
1,4-Dioxane
Concen: 0.878 ug/l
RT: 7.71 min Scan# 1086
Delta R.T. -0.01 min
Lab File: VX017991.D
Acq: 19 Aug 2020 17:36

Tgt Ion	Resp	Lower	Upper
88	111		
43	0.0	27.3	40.9#
58	256.8	57.7	86.5#

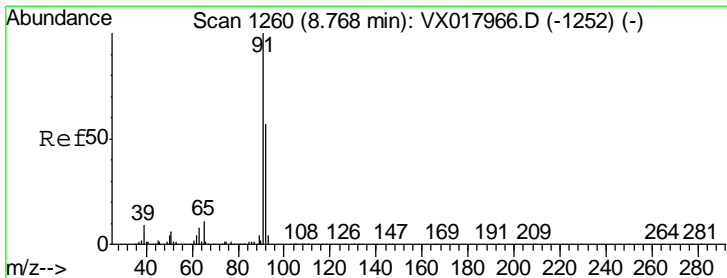
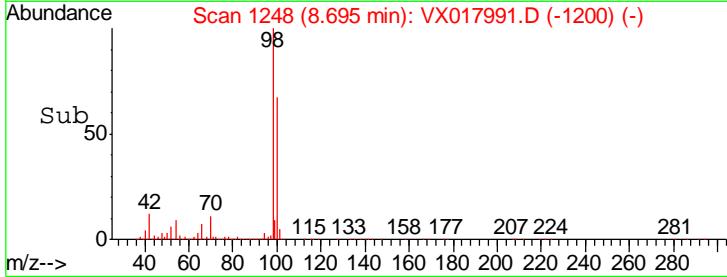
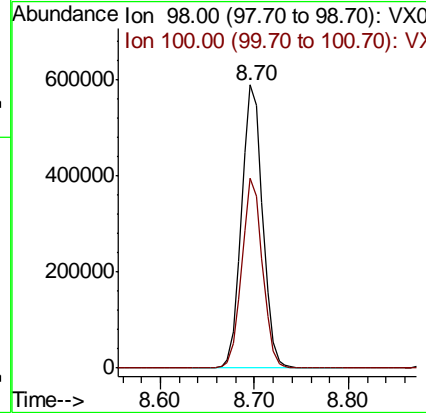
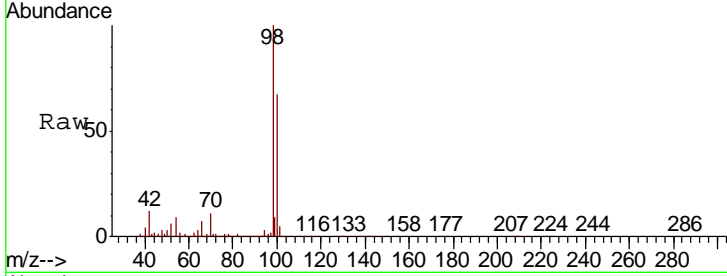




#50
 Toluene-d8
 Concen: 44.939 ug/l
 RT: 8.70 min Scan# 1248
 Delta R.T. -0.01 min
 Lab File: VX017991.D
 Acq: 19 Aug 2020 17:36

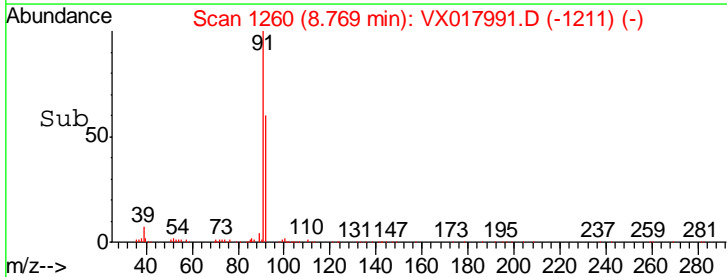
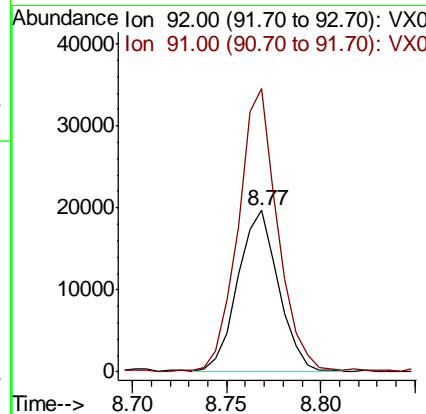
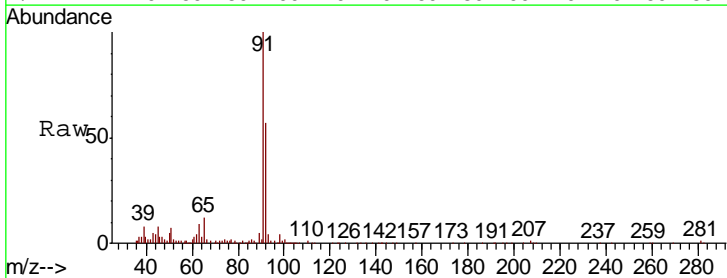
Instrument :
 MSVOA_X
 ClientSampled :
 E-LGC-6

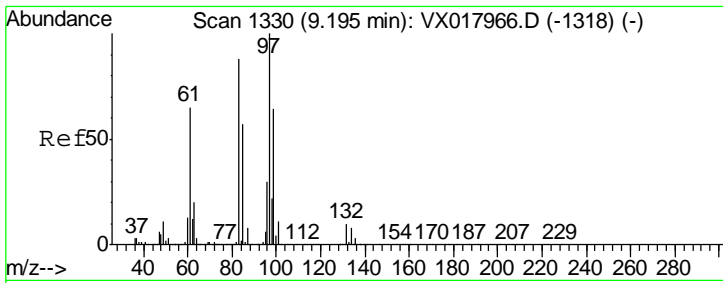
Tgt Ion: 98 Resp: 911611
 Ion Ratio Lower Upper
 98 100
 100 65.3 51.4 77.2



#52
 Toluene
 Concen: 2.327 ug/l
 RT: 8.77 min Scan# 1260
 Delta R.T. 0.00 min
 Lab File: VX017991.D
 Acq: 19 Aug 2020 17:36

Tgt Ion: 92 Resp: 29573
 Ion Ratio Lower Upper
 92 100
 91 169.0 138.4 207.6

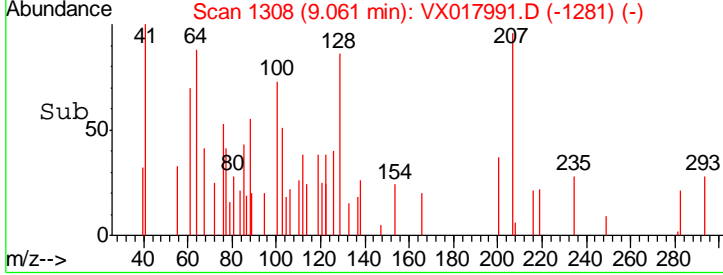
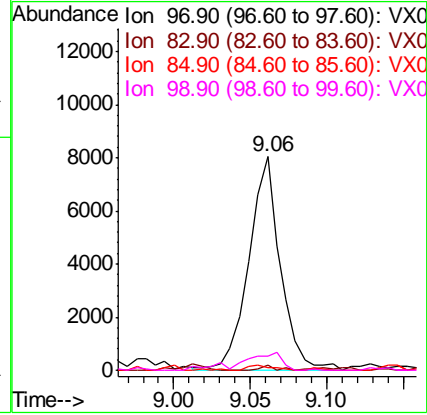
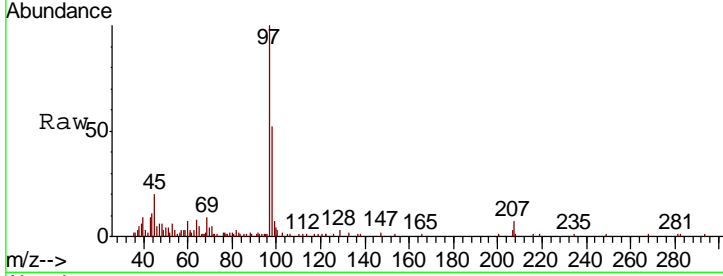




#55
 1,1,2-Trichloroethane
 Concen: 1.982 ug/l
 RT: 9.06 min Scan# 1308
 Delta R.T. -0.13 min
 Lab File: VX017991.D
 Acq: 19 Aug 2020 17:36

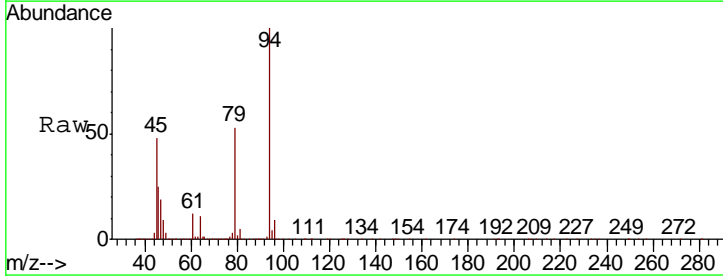
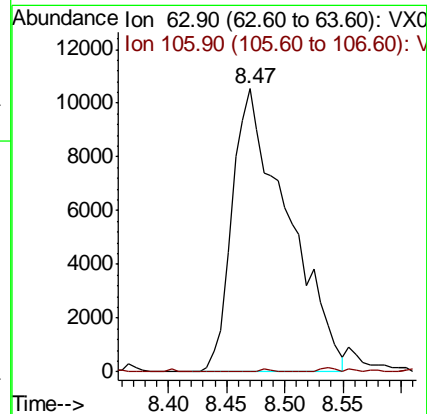
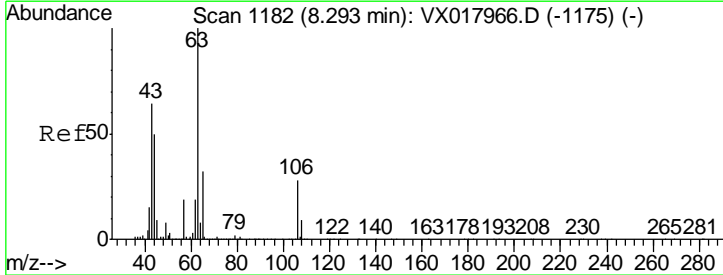
Instrument :
 MSVOA_X
 ClientSampled :
 E-LGC-6

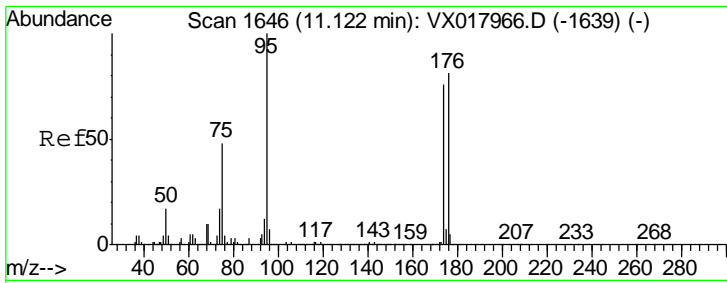
Tgt Ion	Resp	Lower	Upper
97	11575		
83	0.9	70.1	105.1#
85	1.5	45.8	68.8#
99	6.6	51.4	77.2#



#58
 2-Chloroethyl Vinyl ether
 Concen: 8.720 ug/l
 RT: 8.47 min Scan# 1211
 Delta R.T. 0.18 min
 Lab File: VX017991.D
 Acq: 19 Aug 2020 17:36

Tgt Ion	Resp	Lower	Upper
63	34862		
106	0.2	23.0	34.4#

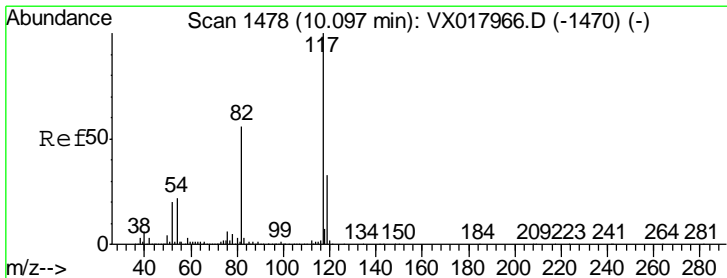
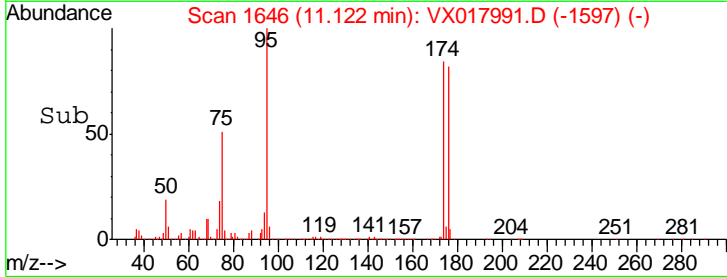
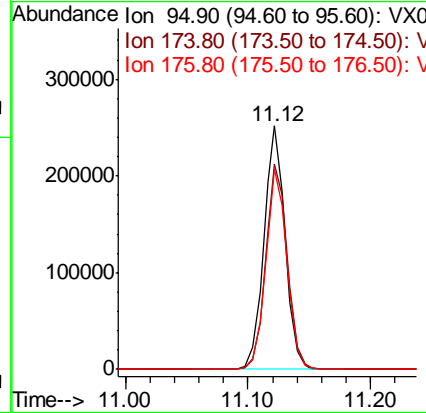
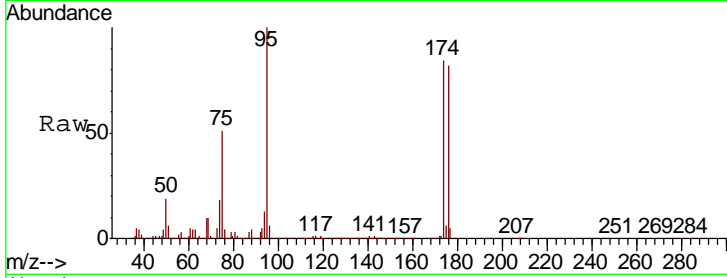




#62
 4-Bromofluorobenzene
 Concen: 40.548 ug/l
 RT: 11.12 min Scan# 1646
 Delta R.T. 0.00 min
 Lab File: VX017991.D
 Acq: 19 Aug 2020 17:36

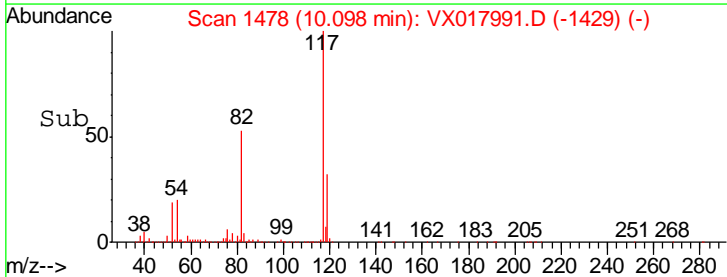
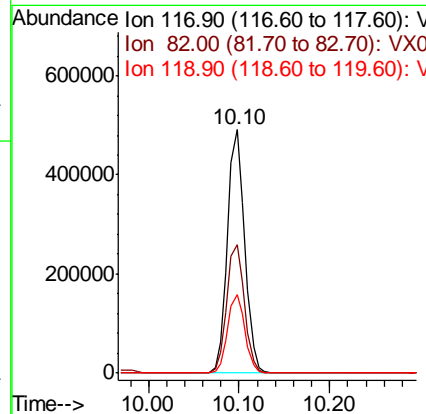
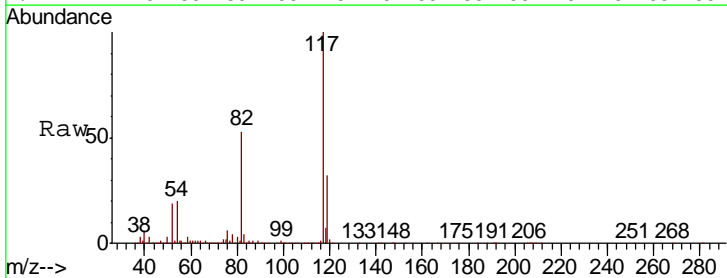
Instrument :
 MSVOA_X
 ClientSampled :
 E-LGC-6

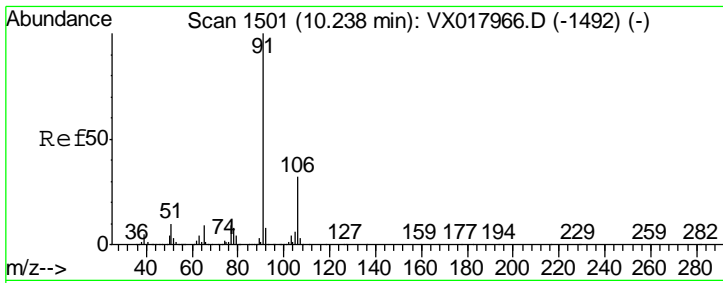
Tgt Ion	Resp	Lower	Upper
95	303799		
174	86.1	0.0	166.0
176	82.1	0.0	161.0



#63
 Chlorobenzene-d5
 Concen: 50.000 ug/l
 RT: 10.10 min Scan# 1478
 Delta R.T. 0.00 min
 Lab File: VX017991.D
 Acq: 19 Aug 2020 17:36

Tgt Ion	Resp	Lower	Upper
117	652014		
82	52.7	44.6	66.8
119	32.0	26.2	39.4

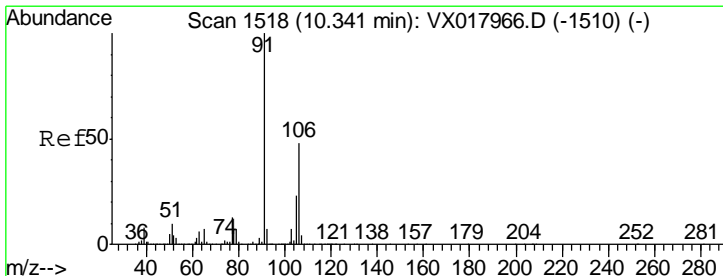
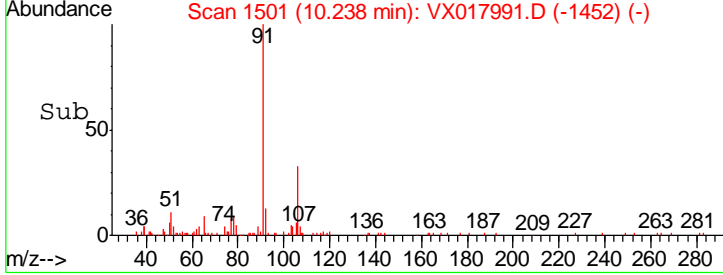
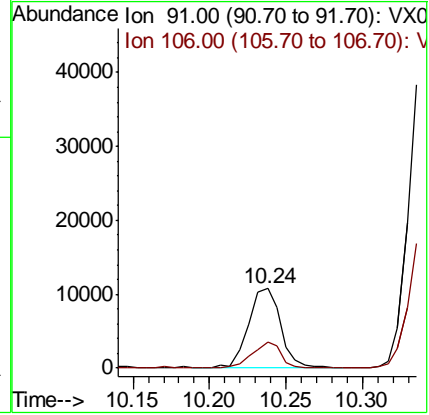
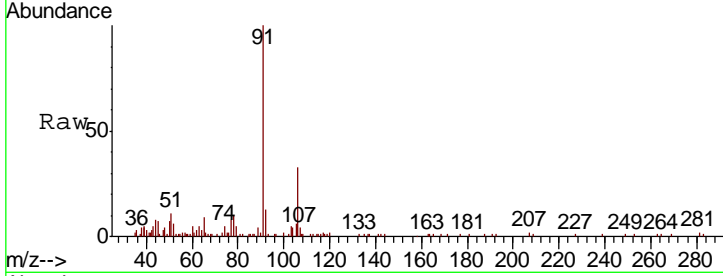




#67
 Ethyl Benzene
 Concen: 0.740 ug/l
 RT: 10.24 min Scan# 1501
 Delta R.T. 0.00 min
 Lab File: VX017991.D
 Acq: 19 Aug 2020 17:36

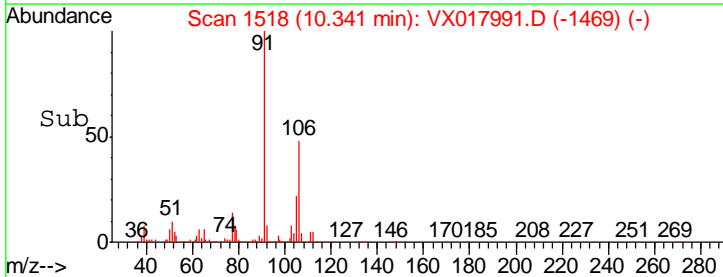
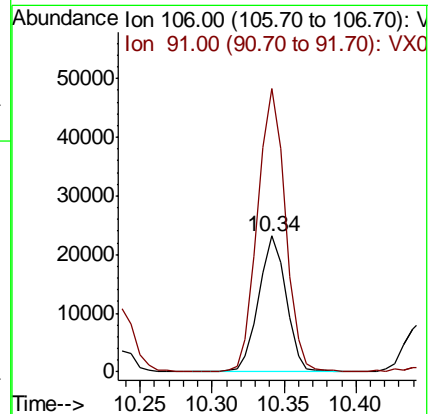
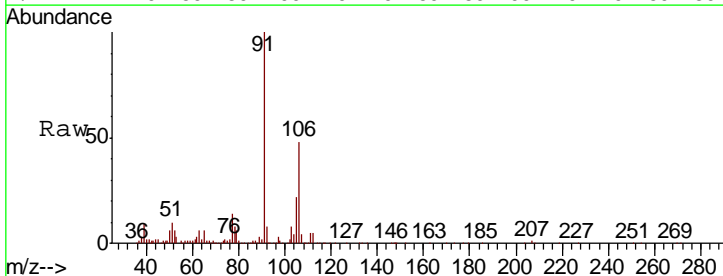
Instrument : MSVOA_X
 ClientSampled : E-LGC-6

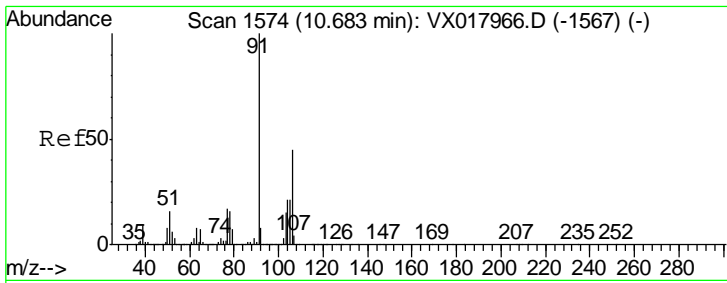
Tgt Ion	Resp	Lower	Upper
91	15798		
106	32.9	25.4	38.0



#68
 m/p-Xylenes
 Concen: 3.730 ug/l
 RT: 10.34 min Scan# 1518
 Delta R.T. 0.00 min
 Lab File: VX017991.D
 Acq: 19 Aug 2020 17:36

Tgt Ion	Resp	Lower	Upper
106	30637		
91	209.5	167.4	251.2

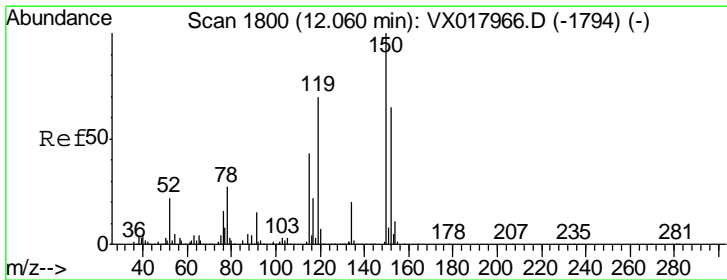
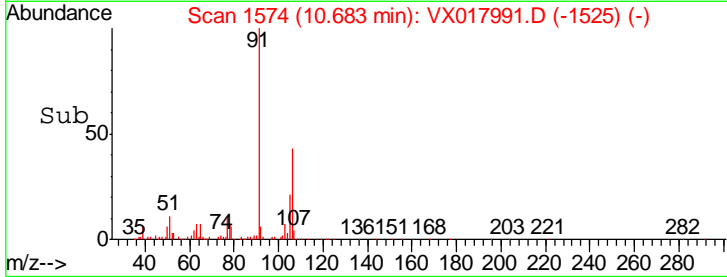
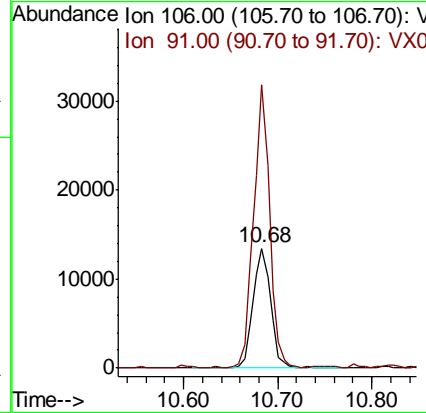
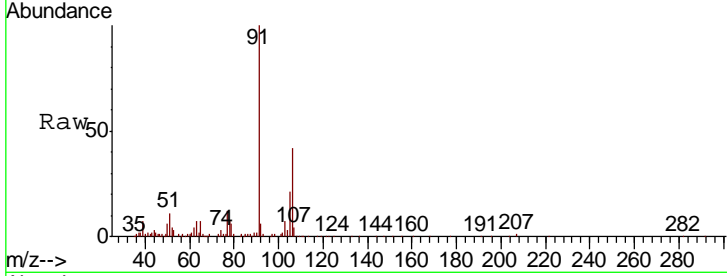




#69
 o-Xylene
 Concen: 2.264 ug/l
 RT: 10.68 min Scan# 1574
 Delta R.T. 0.00 min
 Lab File: VX017991.D
 Acq: 19 Aug 2020 17:36

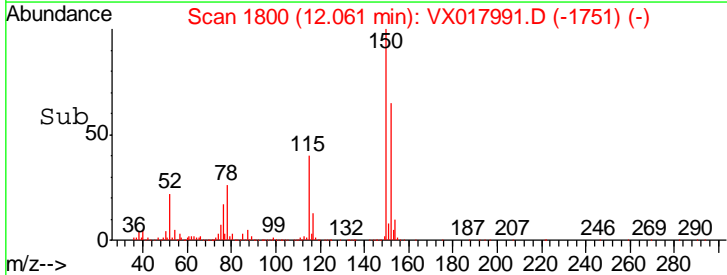
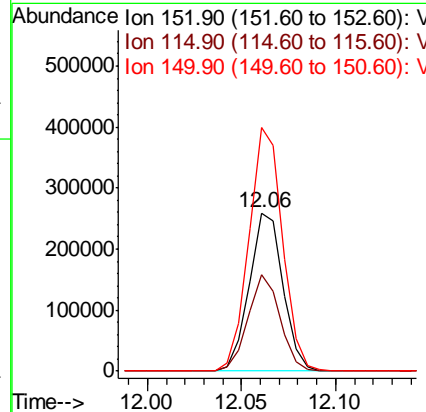
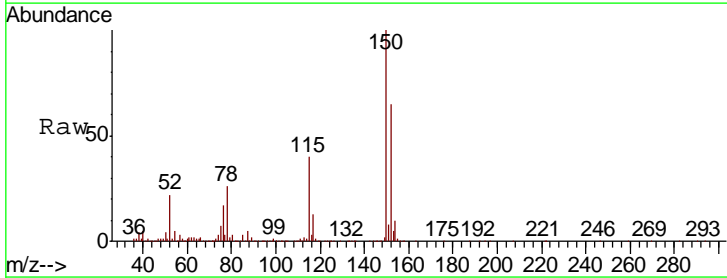
Instrument :
 MSVOA_X
 ClientSampled :
 E-LGC-6

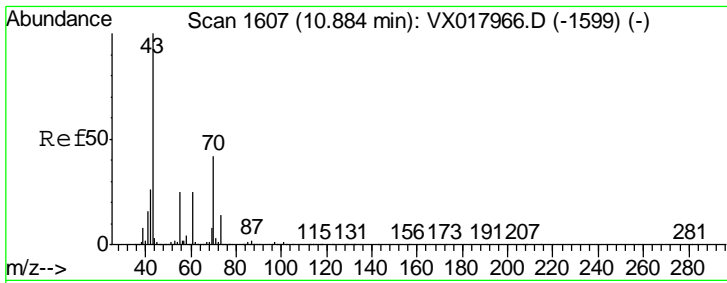
Tgt Ion:106 Resp: 17931
 Ion Ratio Lower Upper
 106 100
 91 213.1 108.1 324.2



#72
 1,4-Dichlorobenzene-d4
 Concen: 50.000 ug/l
 RT: 12.06 min Scan# 1800
 Delta R.T. 0.00 min
 Lab File: VX017991.D
 Acq: 19 Aug 2020 17:36

Tgt Ion:152 Resp: 322006
 Ion Ratio Lower Upper
 152 100
 115 58.1 40.6 121.7
 150 153.1 0.0 346.4

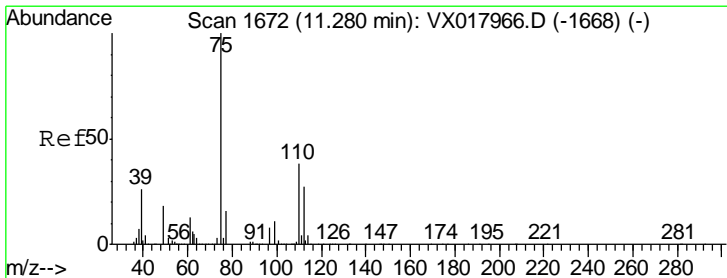
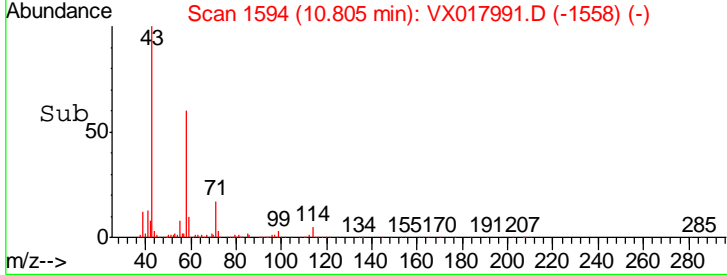
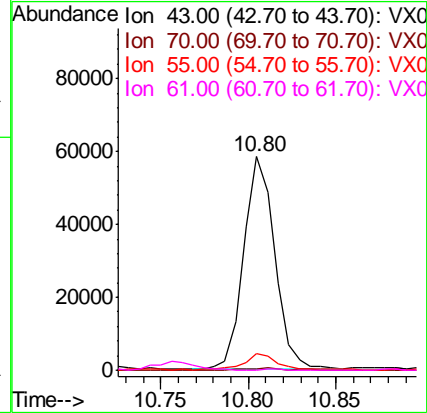
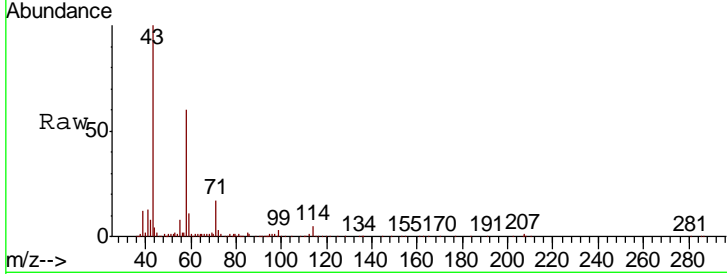




#74
 N-amyl acetate
 Concen: 7.822 ug/l
 RT: 10.80 min Scan# 1594
 Delta R.T. -0.08 min
 Lab File: VX017991.D
 Acq: 19 Aug 2020 17:36

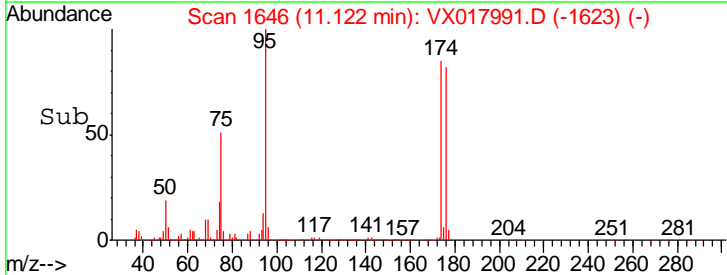
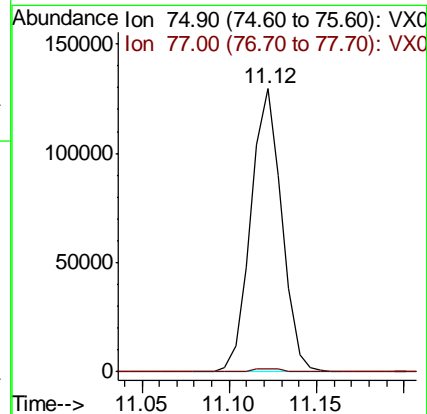
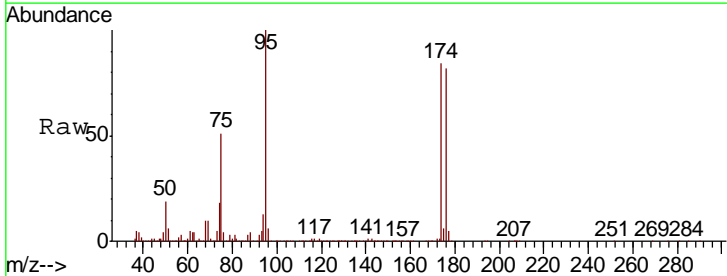
Instrument : MSVOA_X
 ClientSampled : E-LGC-6

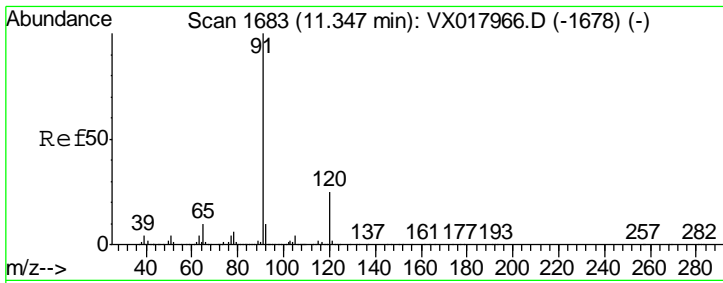
Tgt Ion	Ratio	Lower	Upper
43	100		
70	1.6	32.9	49.3#
55	8.3	19.3	28.9#
61	0.0	19.6	29.4#



#76
 1,2,3-Trichloropropane
 Concen: 23.199 ug/l
 RT: 11.12 min Scan# 1646
 Delta R.T. -0.16 min
 Lab File: VX017991.D
 Acq: 19 Aug 2020 17:36

Tgt Ion	Ratio	Lower	Upper
75	100		
77	1.2	21.1	63.1#

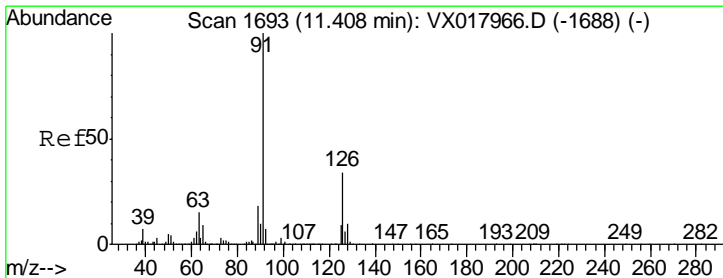
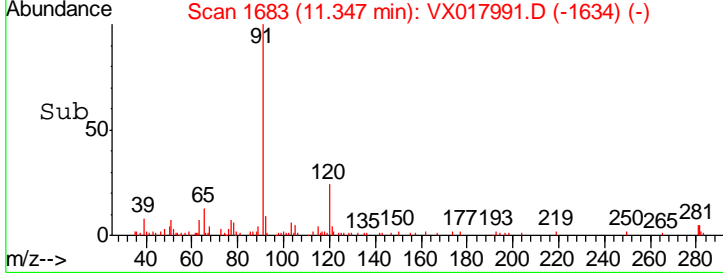
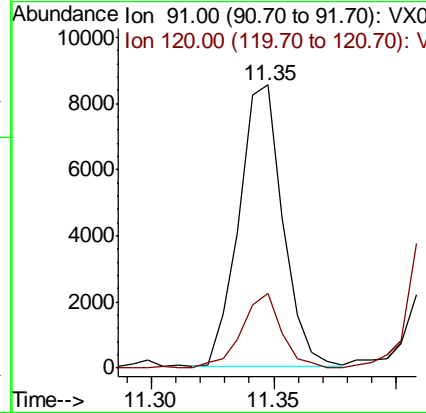
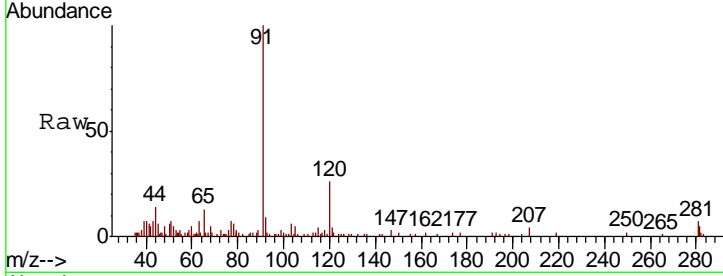




#78
 n-propylbenzene
 Concen: 0.438 ug/l
 RT: 11.35 min Scan# 1683
 Delta R.T. 0.00 min
 Lab File: VX017991.D
 Acq: 19 Aug 2020 17:36

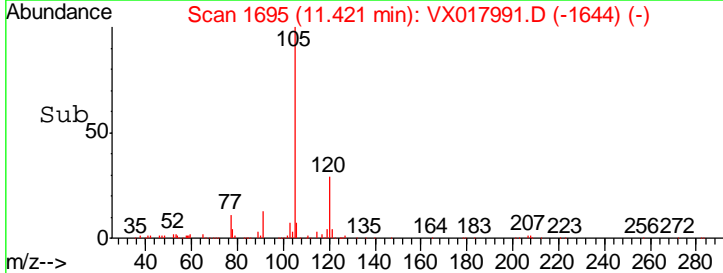
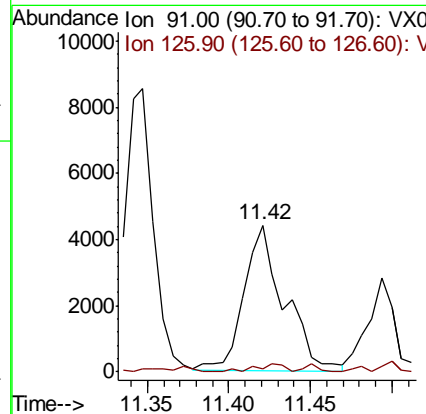
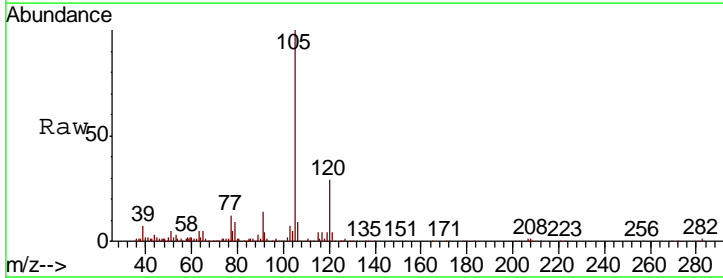
Instrument : MSVOA_X
 ClientSampled : E-LGC-6

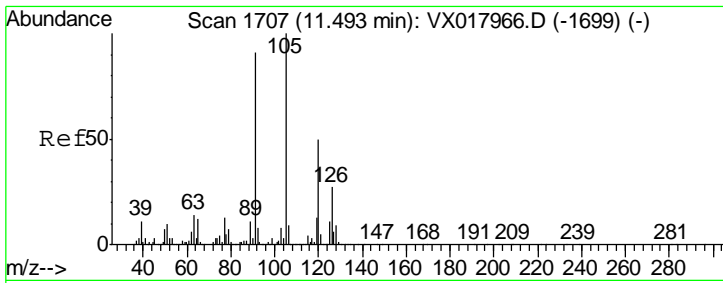
Tgt Ion	Resp	Lower	Upper
91	10606		
120	24.4	12.0	36.1



#79
 2-Chlorotoluene
 Concen: 0.519 ug/l
 RT: 11.42 min Scan# 1695
 Delta R.T. 0.01 min
 Lab File: VX017991.D
 Acq: 19 Aug 2020 17:36

Tgt Ion	Resp	Lower	Upper
91	7665		
126	0.0	17.1	51.2#

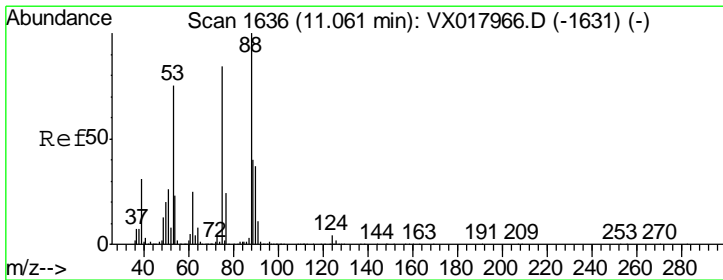
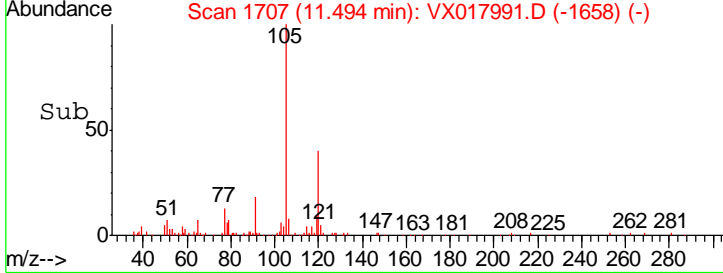
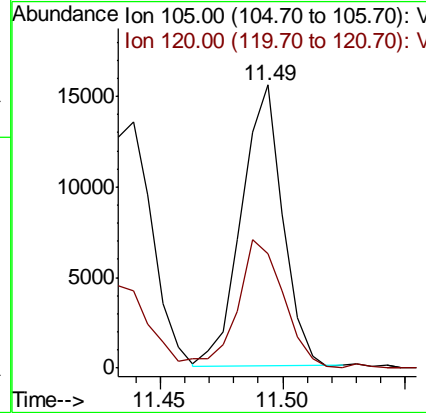
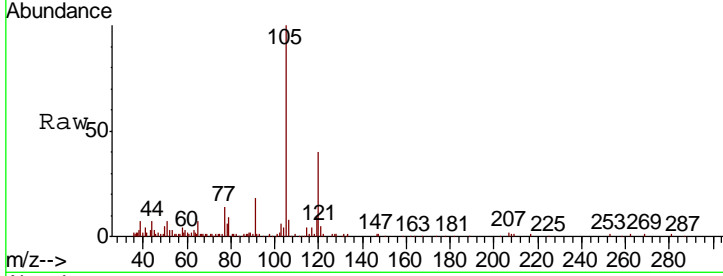




#80
 1,3,5-Trimethylbenzene
 Concen: 0.993 ug/l
 RT: 11.49 min Scan# 1707
 Delta R.T. 0.00 min
 Lab File: VX017991.D
 Acq: 19 Aug 2020 17:36

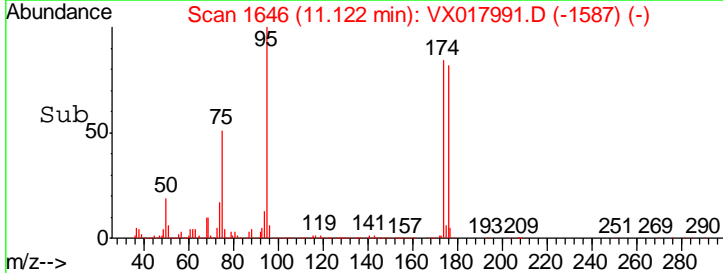
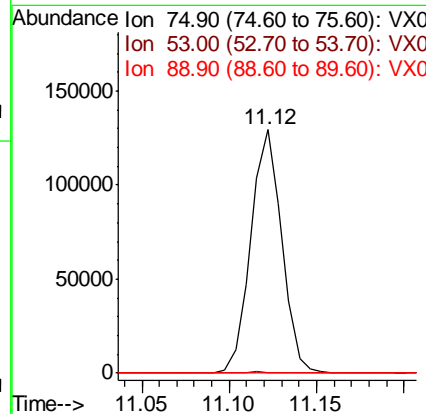
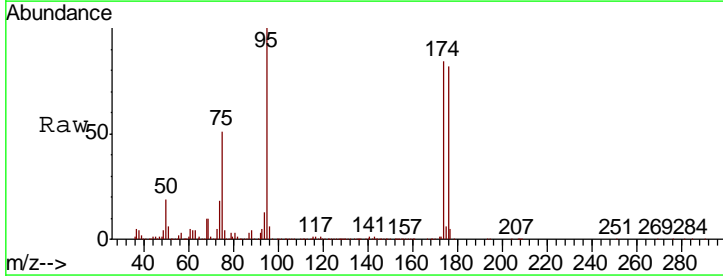
Instrument :
 MSVOA_X
 ClientSampled :
 E-LGC-6

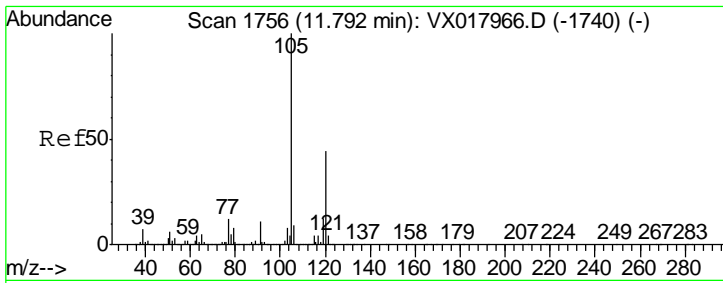
Tgt Ion	Resp	Lower	Upper
105	18069		
120	49.4	24.1	72.4



#81
 trans-1,4-Dichloro-2-butene
 Concen: 60.946 ug/l
 RT: 11.12 min Scan# 1646
 Delta R.T. 0.06 min
 Lab File: VX017991.D
 Acq: 19 Aug 2020 17:36

Tgt Ion	Resp	Lower	Upper
75	158865		
53	0.7	75.2	112.8#
89	0.2	38.4	57.6#

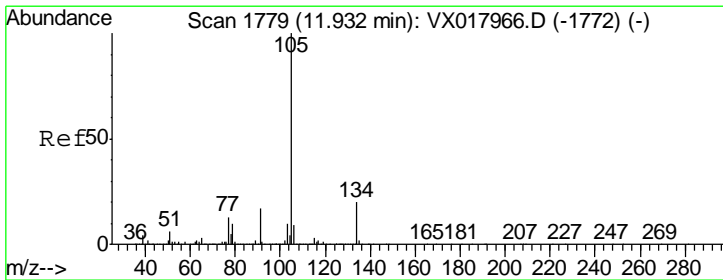
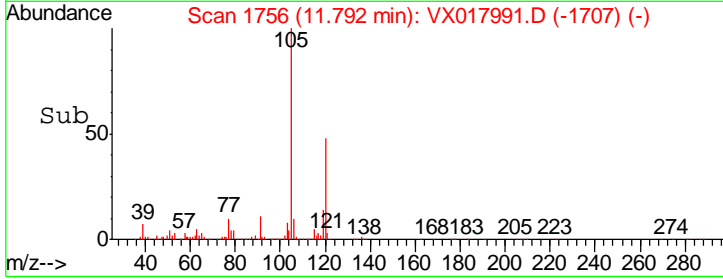
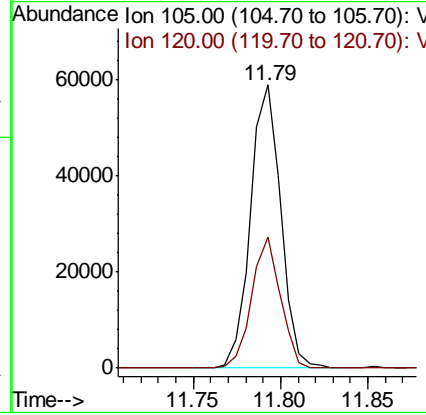
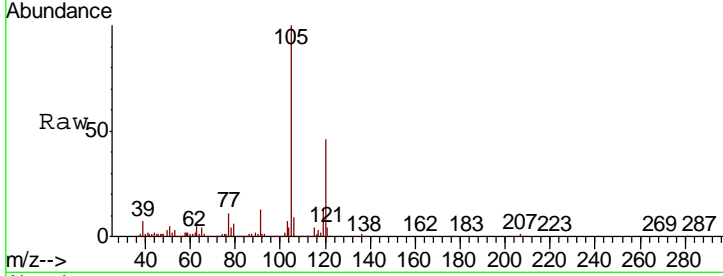




#84
 1,2,4-Trimethylbenzene
 Concen: 3.780 ug/l
 RT: 11.79 min Scan# 1756
 Delta R.T. 0.00 min
 Lab File: VX017991.D
 Acq: 19 Aug 2020 17:36

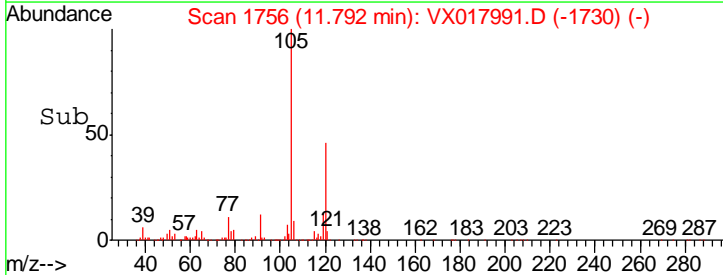
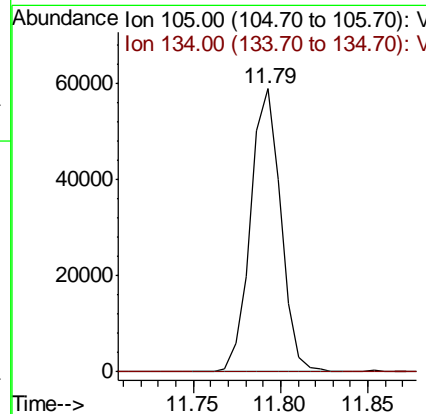
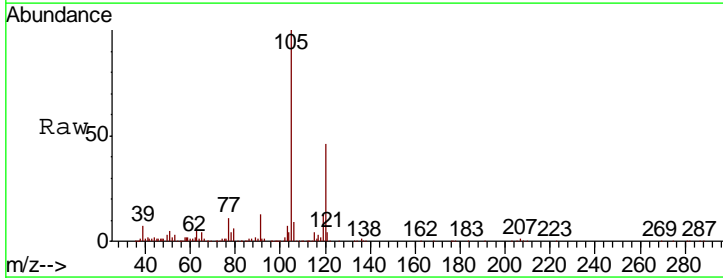
Instrument :
 MSVOA_X
 ClientSampled :
 E-LGC-6

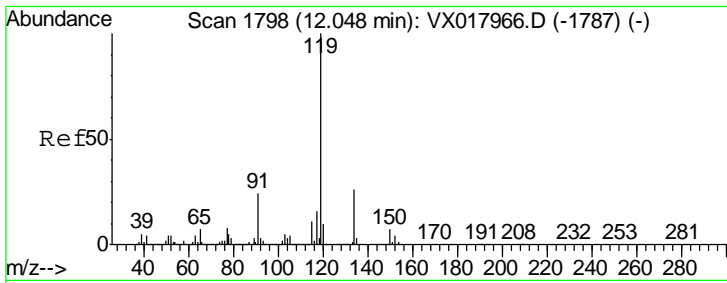
Tgt Ion	Resp	Lower	Upper
105	100		
120	44.2	22.1	66.1



#85
 sec-Butylbenzene
 Concen: 3.433 ug/l
 RT: 11.79 min Scan# 1756
 Delta R.T. -0.14 min
 Lab File: VX017991.D
 Acq: 19 Aug 2020 17:36

Tgt Ion	Resp	Lower	Upper
105	100		
134	0.0	10.3	30.9#

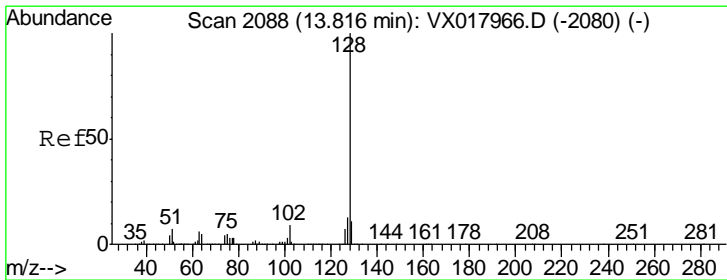
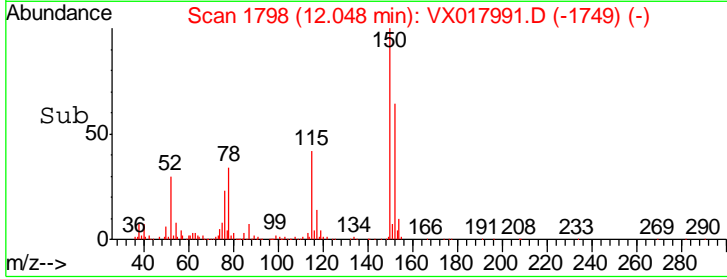
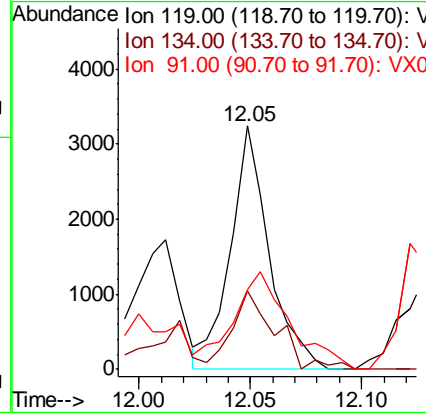
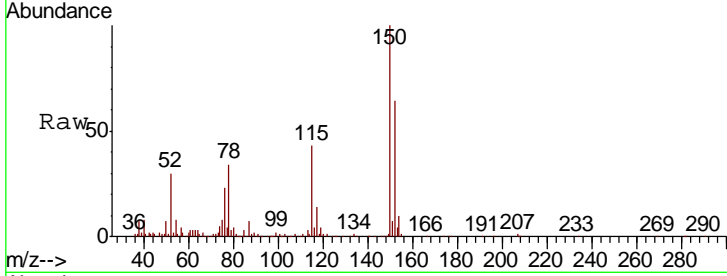




#86
 p-Isopropyltoluene
 Concen: 0.203 ug/l
 RT: 12.05 min Scan# 1798
 Delta R.T. 0.00 min
 Lab File: VX017991.D
 Acq: 19 Aug 2020 17:36

Instrument : MSVOA_X
 ClientSampled : E-LGC-6

Tgt Ion	Resp	Lower	Upper
119	3922		
134	36.2	12.7	38.0
91	56.0	12.2	36.4#



#95
 Naphthalene
 Concen: 34.012 ug/l
 RT: 13.82 min Scan# 2088
 Delta R.T. 0.00 min
 Lab File: VX017991.D
 Acq: 19 Aug 2020 17:36

Tgt Ion	Resp	Lower	Upper
128	682395		
127	13.5	10.7	16.1
129	11.0	8.6	13.0

