

Data Path : Z:\VOASRV\HPCHEM1\MSVOA X\DATA\VX081920\
 Data File : VX018009.D
 Acq On : 20 Aug 2020 01:58
 Operator : JC/SP
 Sample : L3694-09
 Misc : 5.0mL/MSVOA X/WATER
 ALS Vial : 44 Sample Multiplier: 1

Instrument :
 MSVOA_X
 ClientSampled :
 DUP

Quant Time: Aug 20 04:27:53 2020
 Quant Method : Z:\VOASRV\HPCHEM1\MSVOA_X\METHOD\82X081920W.M
 Quant Title : SW846 8260
 QLast Update : Wed Aug 19 05:36:51 2020
 Response via : Initial Calibration

Internal Standards	R.T.	QIon	Response	Conc	Units	Dev(Min)
1) Pentafluorobenzene	5.64	168	482259	50.00	ug/l	0.00
34) 1,4-Difluorobenzene	6.83	114	753755	50.00	ug/l	-0.01
63) Chlorobenzene-d5	10.10	117	703119	50.00	ug/l	0.00
72) 1,4-Dichlorobenzene-d4	12.06	152	309692	50.00	ug/l	0.00

System Monitoring Compounds

33) 1,2-Dichloroethane-d4	6.03	65	333108	47.12	ug/l	0.00
Spiked Amount	50.000		Recovery	=	94.24%	
35) Dibromofluoromethane	5.47	113	263221	46.89	ug/l	0.00
Spiked Amount	50.000		Recovery	=	93.78%	
50) Toluene-d8	8.70	98	907439	45.74	ug/l	0.00
Spiked Amount	50.000		Recovery	=	91.48%	
62) 4-Bromofluorobenzene	11.12	95	327932	44.75	ug/l	0.00
Spiked Amount	50.000		Recovery	=	89.50%	

Target Compounds

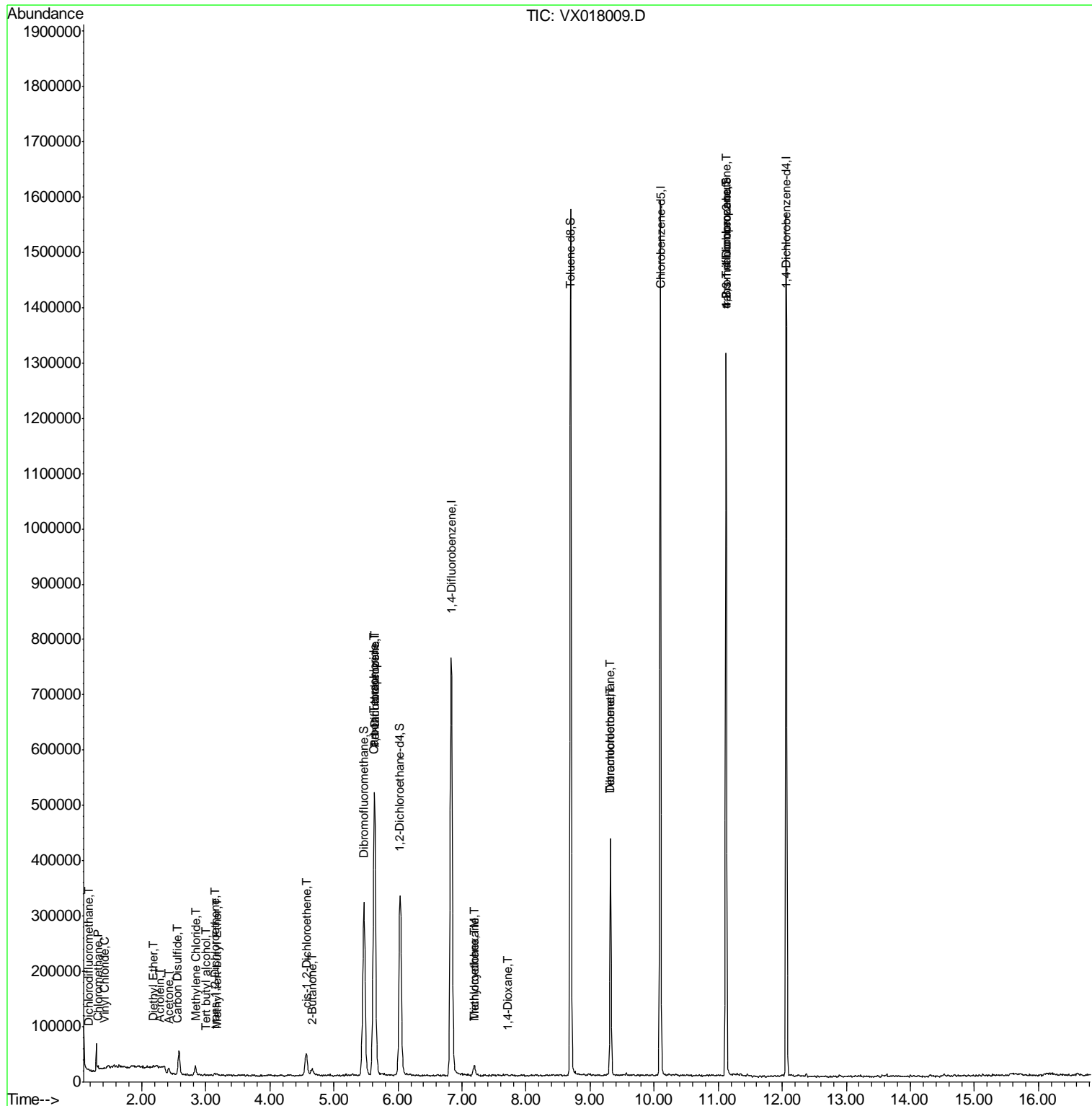
						Qvalue
2) Dichlorodifluoromethane	1.18	85	541	1.062	ug/l #	64
3) Chloromethane	1.32	50	5413	0.821	ug/l	95
4) Vinyl Chloride	1.41	62	713	2.359	ug/l #	44
8) Diethyl Ether	2.17	74	646	0.219	ug/l	97
11) Tert butyl alcohol	3.00	59	476	0.349	ug/l #	1
13) Acrolein	2.29	56	590	0.818	ug/l #	66
16) Acetone	2.42	43	10174	3.658	ug/l	90
17) Carbon Disulfide	2.56	76	2992	0.284	ug/l #	79
19) Methyl tert-butyl Ether	3.17	73	4894	0.294	ug/l	97
20) Methylene Chloride	2.84	84	7652	1.493	ug/l #	91
21) trans-1,2-Dichloroethene	3.14	96	1444	0.323	ug/l #	54
25) 2-Butanone	4.65	43	1623	0.385	ug/l #	84
27) cis-1,2-Dichloroethene	4.57	96	26344	4.997	ug/l	86
36) 1,1-Dichloropropene	5.64	75	37900	6.007	ug/l #	51
38) Carbon Tetrachloride	5.62	117	48122	5.894	ug/l #	15
39) Methylcyclohexane	7.20	83	254	0.844	ug/l	90
44) Trichloroethene	7.19	130	6915	1.227	ug/l	89
49) 1,4-Dioxane	7.72	88	122	0.986	ug/l #	1
60) Dibromochloromethane	9.32	129	79011	11.077	ug/l #	10
64) Tetrachloroethene	9.32	164	80005	14.900	ug/l	96
76) 1,2,3-Trichloropropane	11.12	75	168392	25.568	ug/l #	36
81) trans-1,4-Dichloro-2-buten	11.12	75	168392	67.170	ug/l #	12

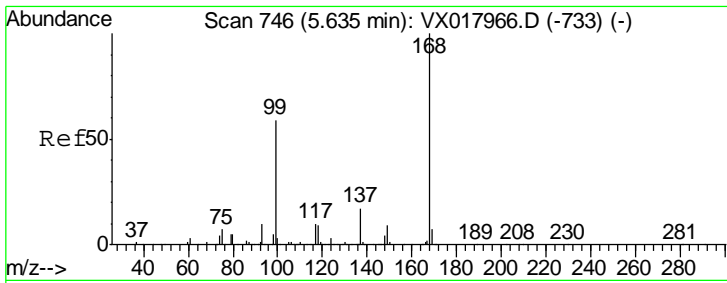
(#) = qualifier out of range (m) = manual integration (+) = signals summed

Data Path : Z:\VOASRV\HPCHEM1\MSVOA X\DATA\VX081920\
 Data File : VX018009.D
 Acq On : 20 Aug 2020 01:58
 Operator : JC/SP
 Sample : L3694-09
 Misc : 5.0mL/MSVOA X/WATER
 ALS Vial : 44 Sample Multiplier: 1

Instrument :
 MSVOA_X
 Client Sampled :
 DUP

Quant Time: Aug 20 04:27:53 2020
 Quant Method : Z:\VOASRV\HPCHEM1\MSVOA_X\METHOD\82X081920W.M
 Quant Title : SW846 8260
 QLast Update : Wed Aug 19 05:36:51 2020
 Response via : Initial Calibration

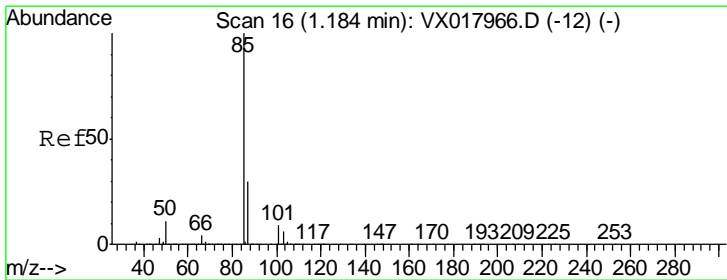
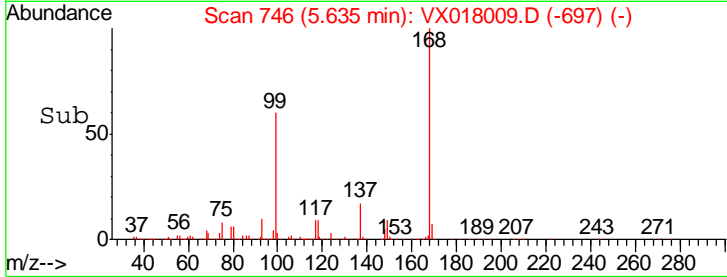
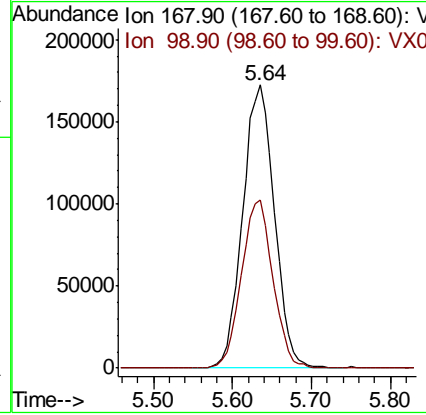
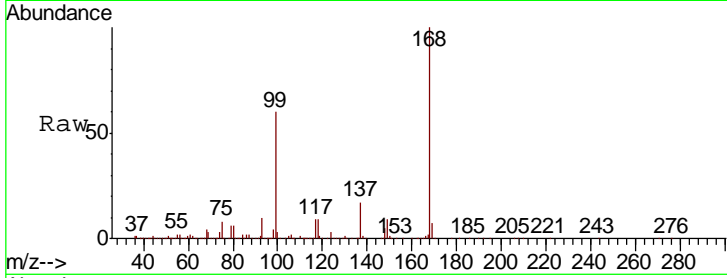




#1
 Pentafluorobenzene
 Concen: 50.000 ug/l
 RT: 5.64 min Scan# 746
 Delta R.T. 0.00 min
 Lab File: VX018009.D
 Acq: 20 Aug 2020 01:58

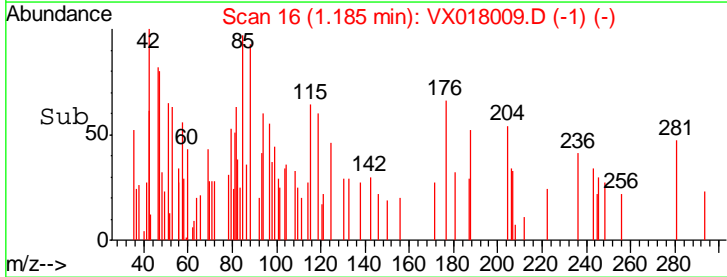
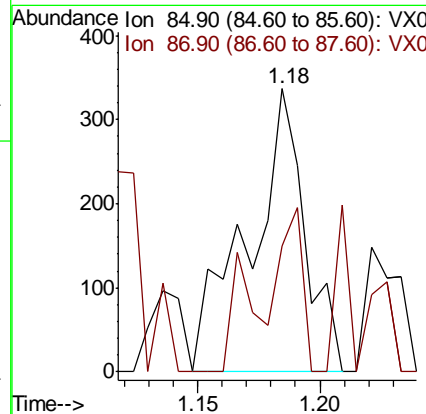
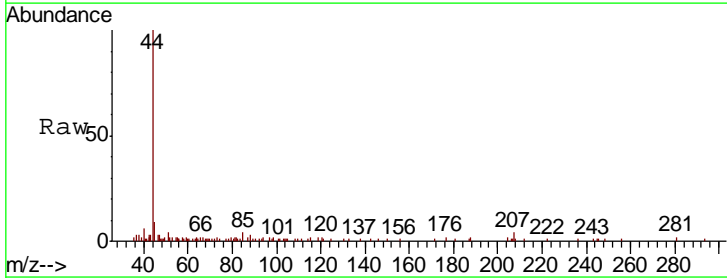
Instrument :
 MSVOA_X
 ClientSampled :
 DUP

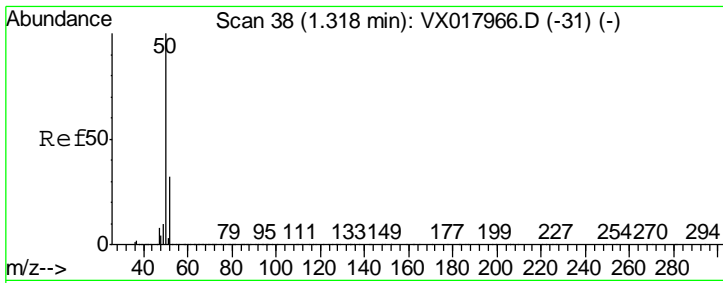
Tgt Ion	Resp	Lower	Upper
168	100		
99	59.5	47.4	71.2



#2
 Dichlorodifluoromethane
 Concen: 1.062 ug/l
 RT: 1.18 min Scan# 16
 Delta R.T. 0.00 min
 Lab File: VX018009.D
 Acq: 20 Aug 2020 01:58

Tgt Ion	Resp	Lower	Upper
85	100		
87	10.7	15.3	45.8#

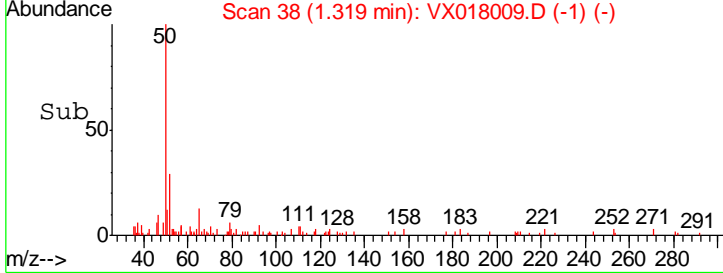
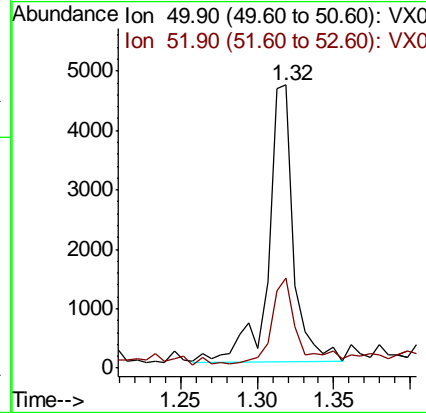
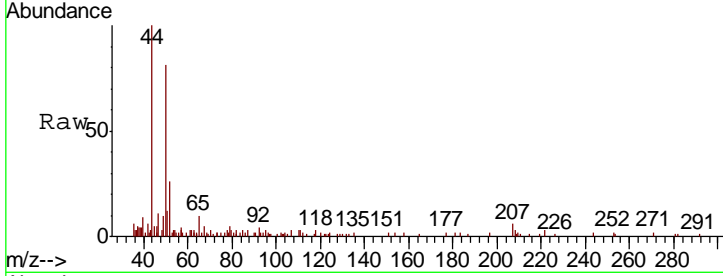




#3
 Chloromethane
 Concen: 0.821 ug/l
 RT: 1.32 min Scan# 38
 Delta R.T. 0.00 min
 Lab File: VX018009.D
 Acq: 20 Aug 2020 01:58

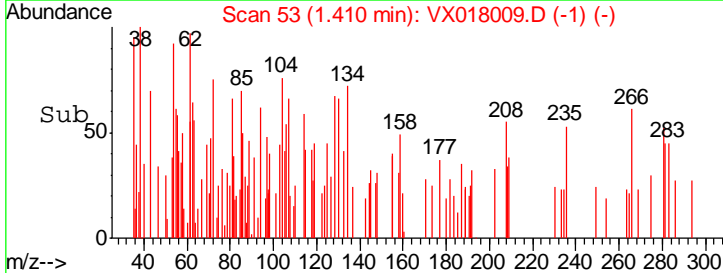
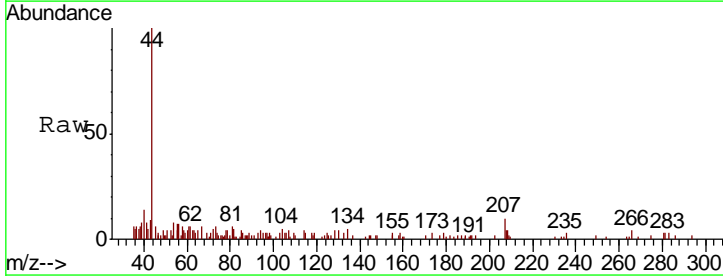
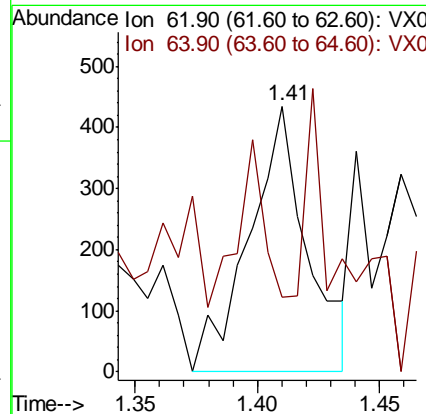
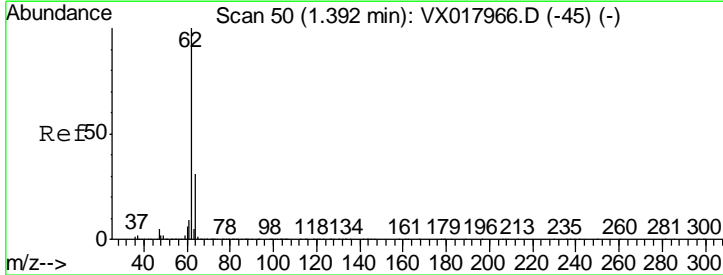
Instrument :
 MSVOA_X
 ClientSampled :
 DUP

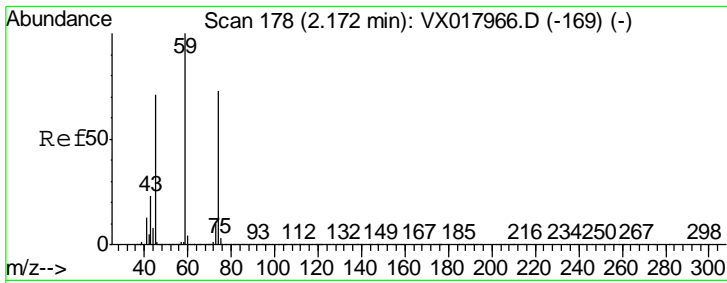
Tgt Ion: 50 Resp: 5413
 Ion Ratio Lower Upper
 50 100
 52 29.0 25.4 38.0



#4
 Vinyl Chloride
 Concen: 2.359 ug/l
 RT: 1.41 min Scan# 53
 Delta R.T. 0.02 min
 Lab File: VX018009.D
 Acq: 20 Aug 2020 01:58

Tgt Ion: 62 Resp: 713
 Ion Ratio Lower Upper
 62 100
 64 0.0 24.7 37.1#

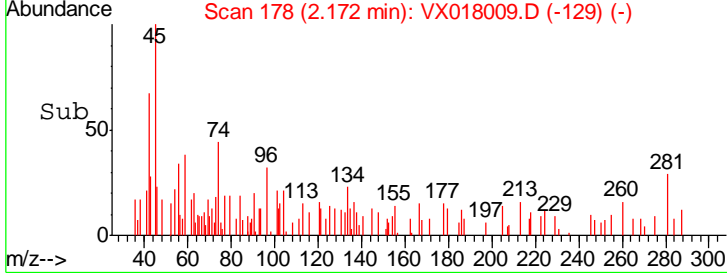
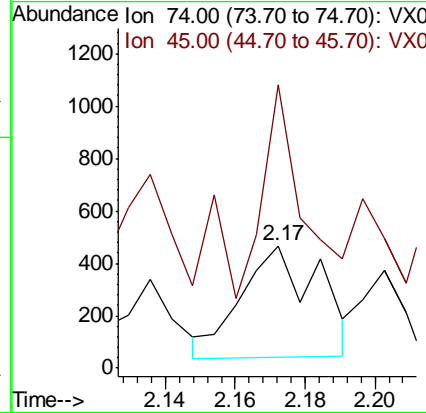
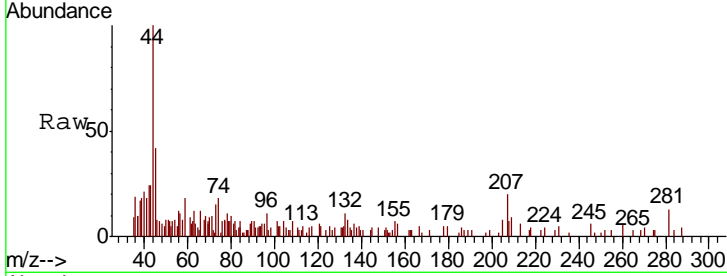




#8
 Diethyl Ether
 Concen: 0.219 ug/l
 RT: 2.17 min Scan# 178
 Delta R.T. 0.00 min
 Lab File: VX018009.D
 Acq: 20 Aug 2020 01:58

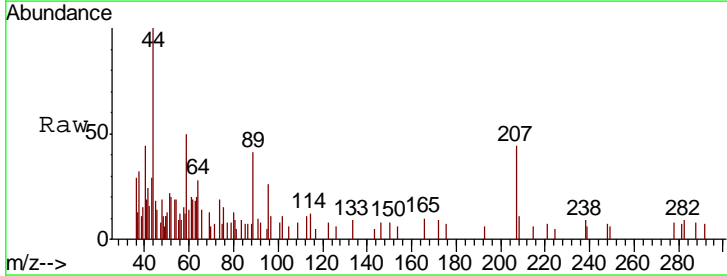
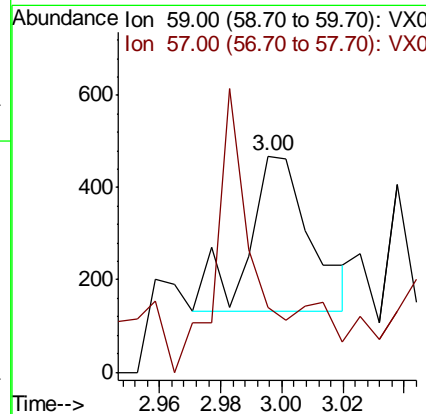
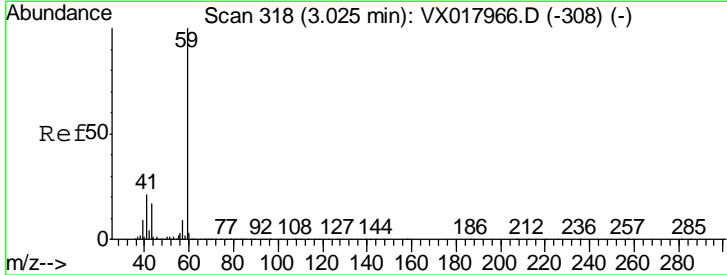
Instrument :
 MSVOA_X
ClientSampled :
 DUP

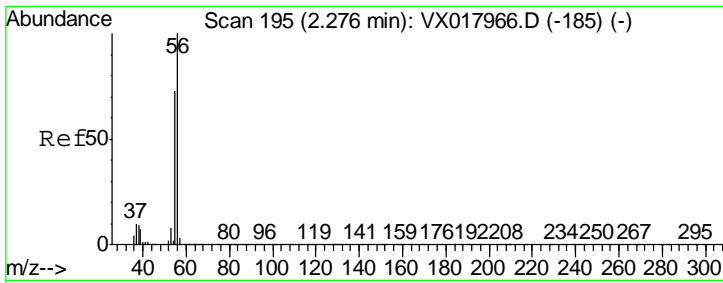
Tgt Ion	Resp	Lower	Upper
74	100		
45	104.2	50.5	151.6



#11
 Tert butyl alcohol
 Concen: 0.349 ug/l
 RT: 3.00 min Scan# 313
 Delta R.T. -0.03 min
 Lab File: VX018009.D
 Acq: 20 Aug 2020 01:58

Tgt Ion	Resp	Lower	Upper
59	100		
57	103.4	8.6	13.0#

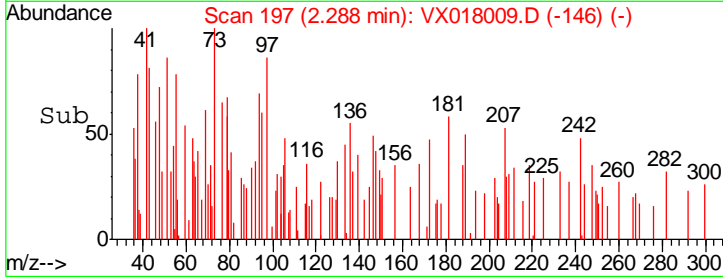
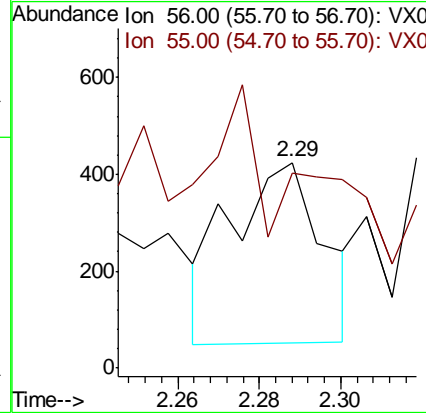
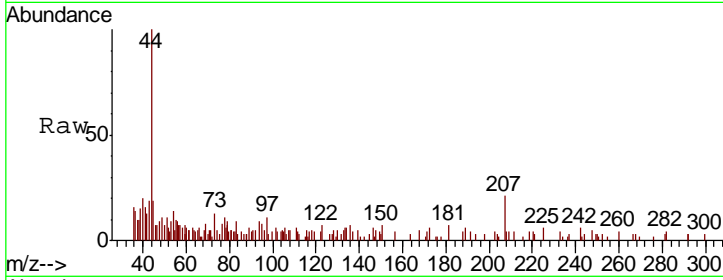




#13
 Acrolein
 Concen: 0.818 ug/l
 RT: 2.29 min Scan# 197
 Delta R.T. 0.01 min
 Lab File: VX018009.D
 Acq: 20 Aug 2020 01:58

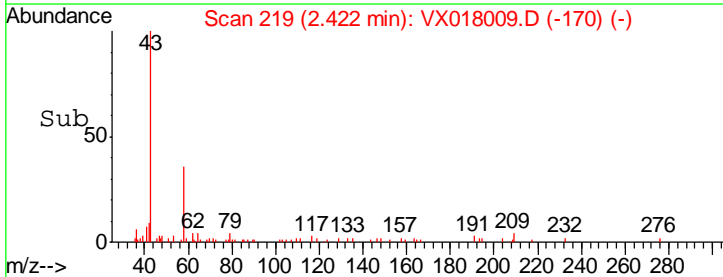
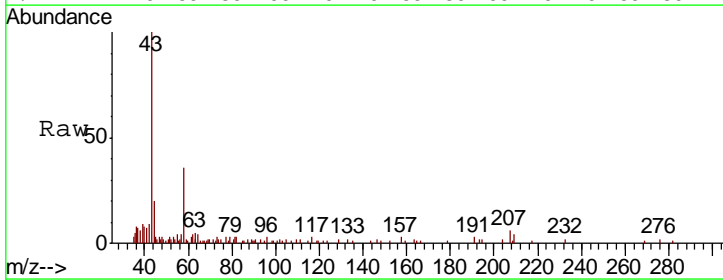
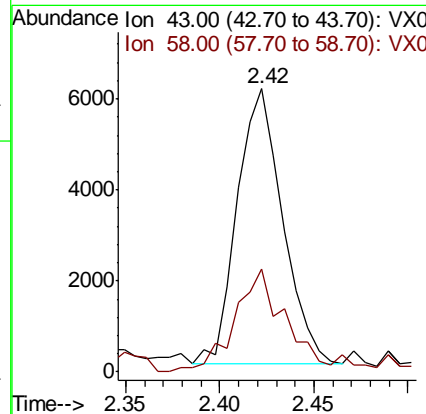
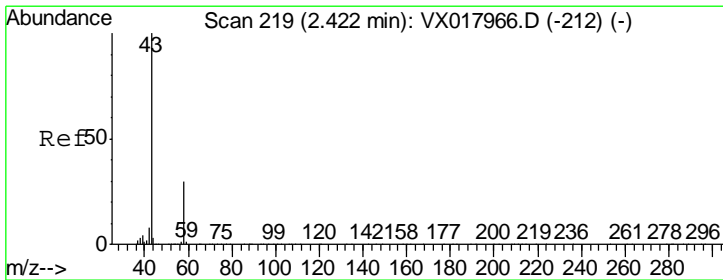
Instrument : MSVOA_X
 ClientSampled : DUP

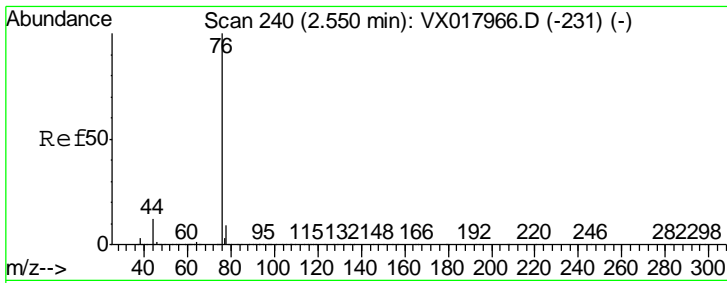
Tgt Ion: 56 Resp: 590
 Ion Ratio Lower Upper
 56 100
 55 44.6 58.2 87.4#



#16
 Acetone
 Concen: 3.658 ug/l
 RT: 2.42 min Scan# 219
 Delta R.T. 0.00 min
 Lab File: VX018009.D
 Acq: 20 Aug 2020 01:58

Tgt Ion: 43 Resp: 10174
 Ion Ratio Lower Upper
 43 100
 58 35.5 23.8 35.8

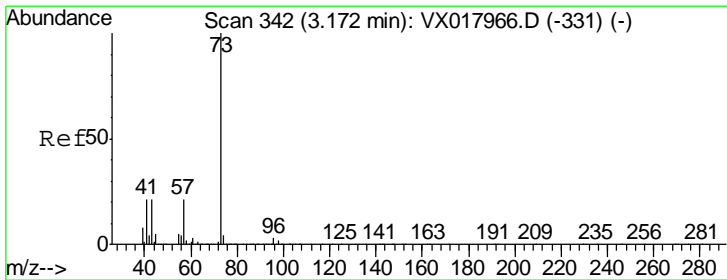
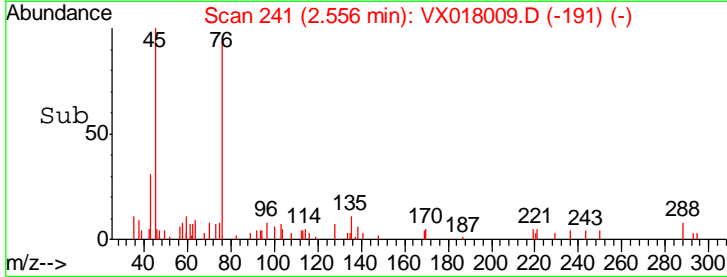
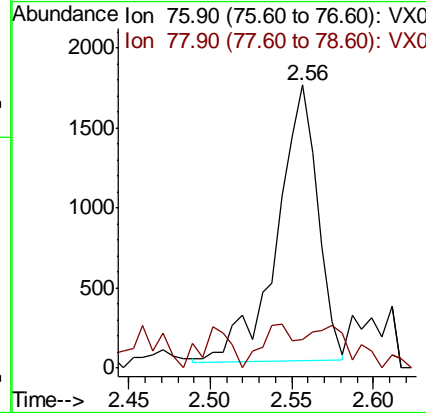
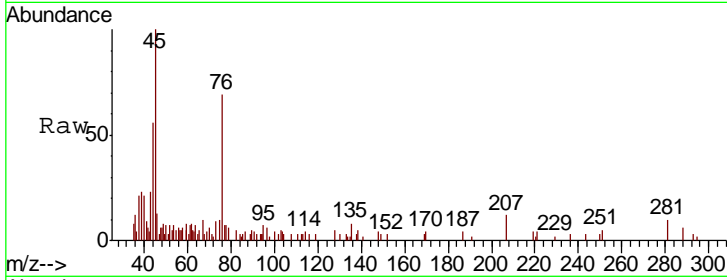




#17
 Carbon Disulfide
 Concen: 0.284 ug/l
 RT: 2.56 min Scan# 241
 Delta R.T. 0.01 min
 Lab File: VX018009.D
 Acq: 20 Aug 2020 01:58

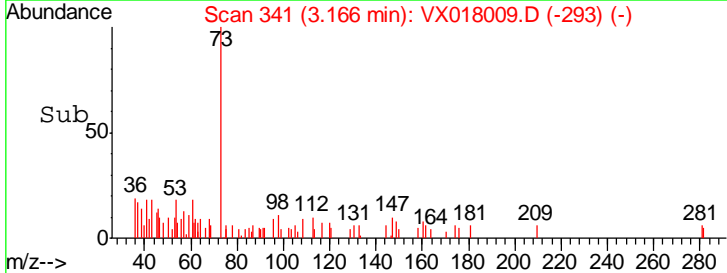
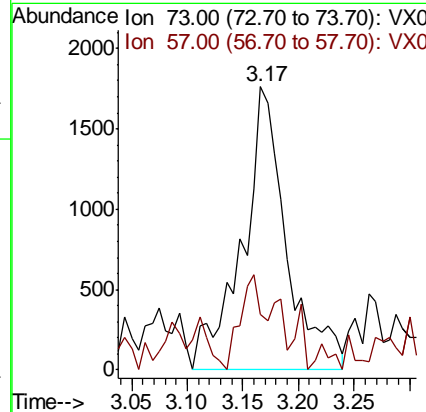
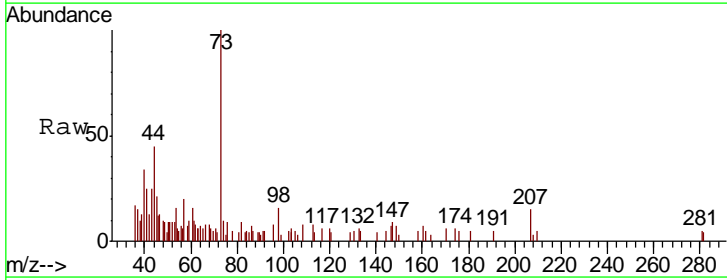
Instrument :
 MSVOA_X
 ClientSampled :
 DUP

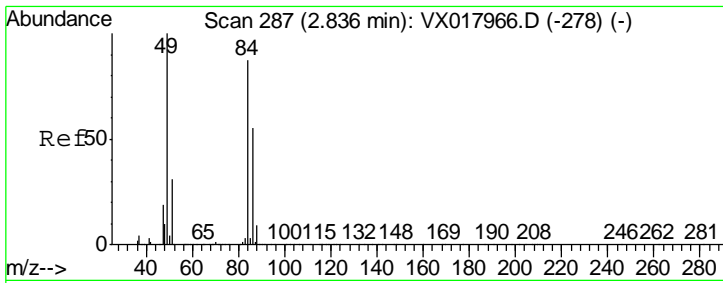
Tgt Ion: 76 Resp: 2992
 Ion Ratio Lower Upper
 76 100
 78 1.6 7.3 10.9#



#19
 Methyl tert-butyl Ether
 Concen: 0.294 ug/l
 RT: 3.17 min Scan# 341
 Delta R.T. -0.01 min
 Lab File: VX018009.D
 Acq: 20 Aug 2020 01:58

Tgt Ion: 73 Resp: 4894
 Ion Ratio Lower Upper
 73 100
 57 19.7 16.9 25.3

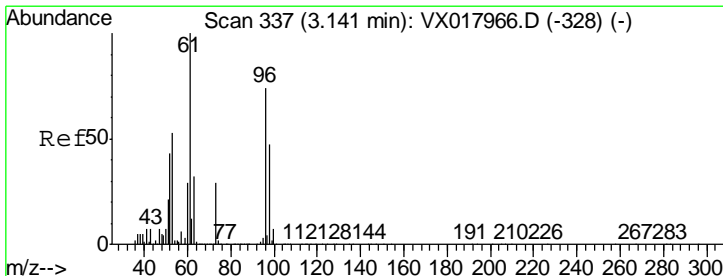
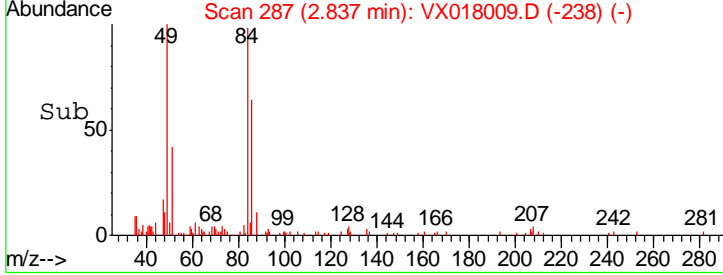
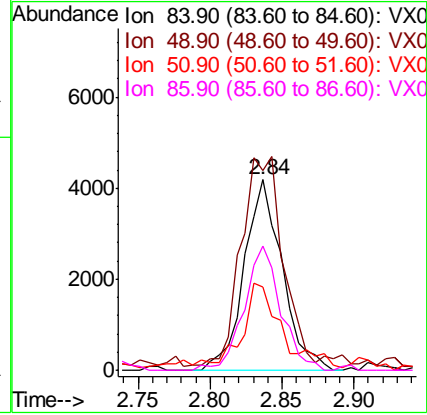
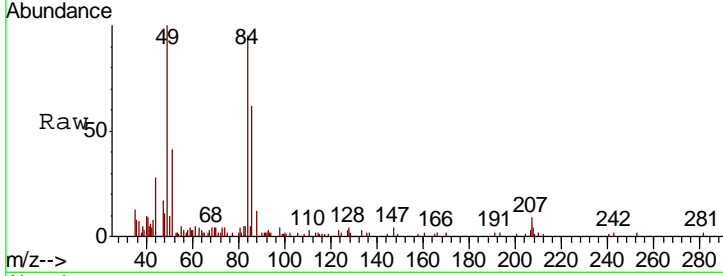




#20
Methylene Chloride
Concen: 1.493 ug/l
RT: 2.84 min Scan# 287
Delta R.T. 0.00 min
Lab File: VX018009.D
Acq: 20 Aug 2020 01:58

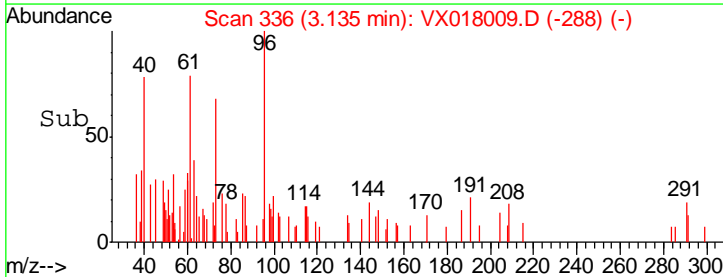
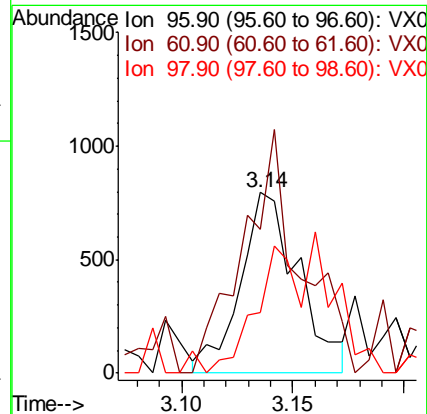
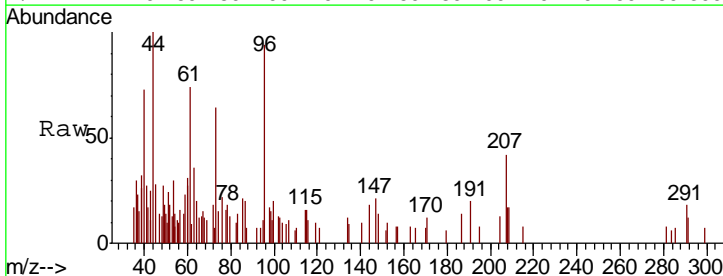
Instrument : MSVOA_X
ClientSampled : DUP

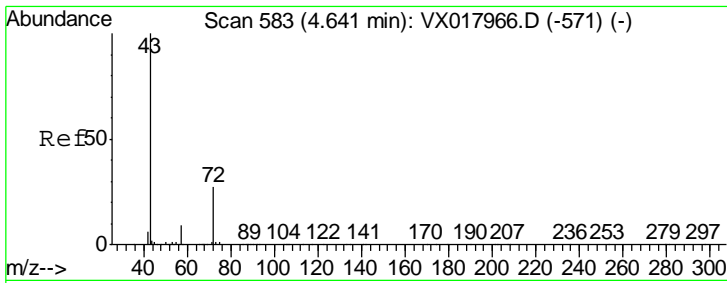
Tgt Ion	Resp	Lower	Upper
84	7652		
49	102.6	91.8	137.6
51	42.1	27.8	41.8#
86	65.4	50.5	75.7



#21
trans-1,2-Dichloroethene
Concen: 0.323 ug/l
RT: 3.14 min Scan# 336
Delta R.T. -0.01 min
Lab File: VX018009.D
Acq: 20 Aug 2020 01:58

Tgt Ion	Resp	Lower	Upper
96	1444		
61	85.1	108.6	163.0#
98	23.1	51.4	77.0#

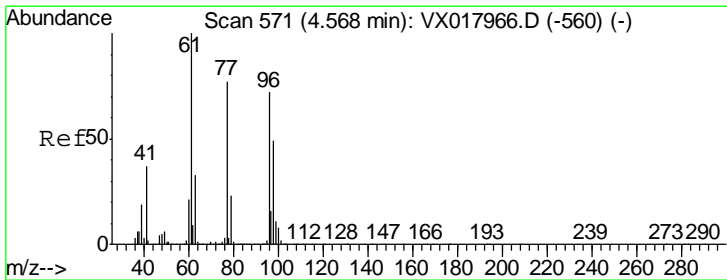
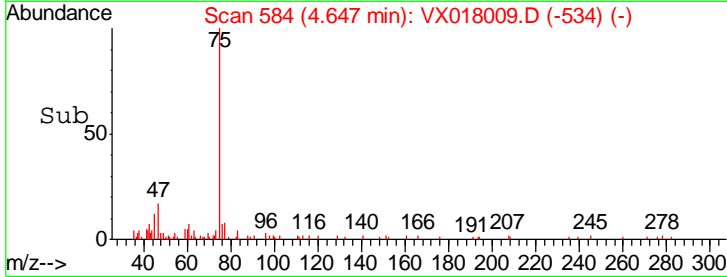
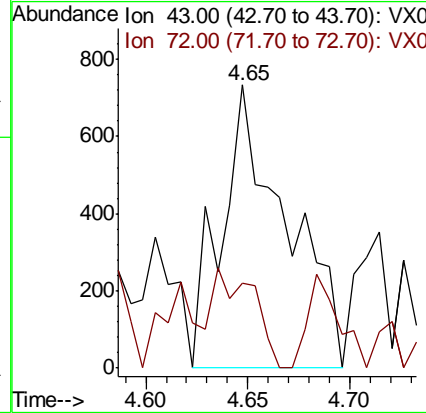
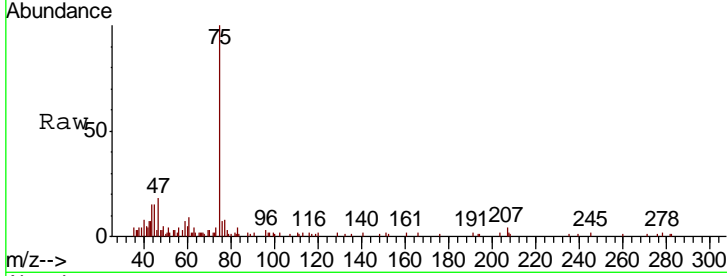




#25
 2-Butanone
 Concen: 0.385 ug/l
 RT: 4.65 min Scan# 584
 Delta R.T. 0.01 min
 Lab File: VX018009.D
 Acq: 20 Aug 2020 01:58

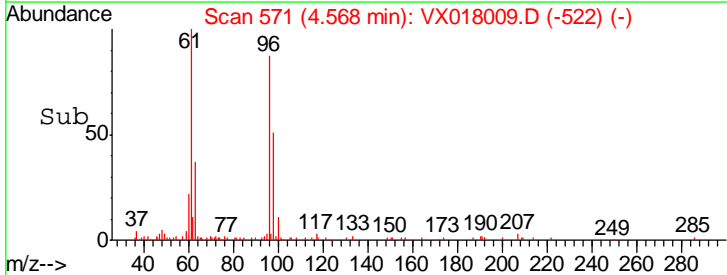
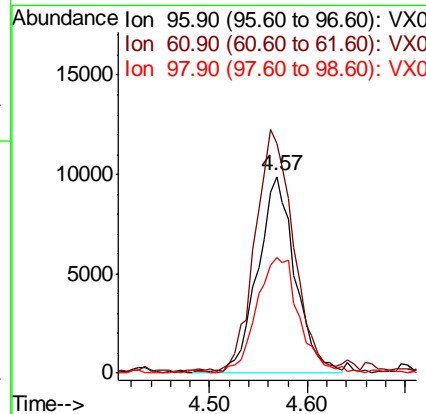
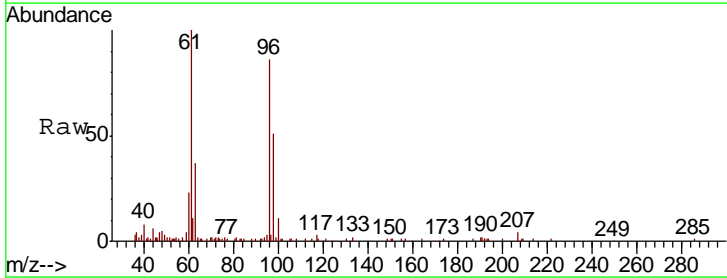
Instrument :
 MSVOA_X
 ClientSampled :
 DUP

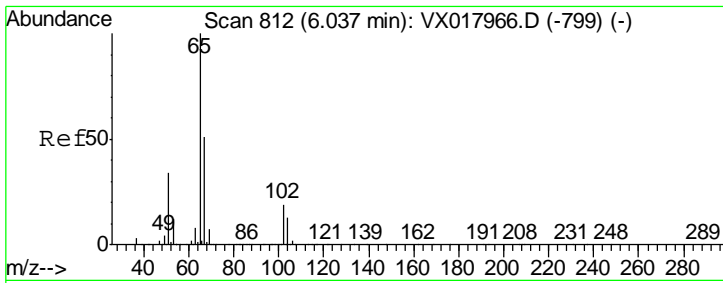
Tgt Ion: 43 Resp: 1623
 Ion Ratio Lower Upper
 43 100
 72 18.4 21.4 32.2#



#27
 cis-1,2-Dichloroethene
 Concen: 4.997 ug/l
 RT: 4.57 min Scan# 571
 Delta R.T. 0.00 min
 Lab File: VX018009.D
 Acq: 20 Aug 2020 01:58

Tgt Ion: 96 Resp: 26344
 Ion Ratio Lower Upper
 96 100
 61 125.1 0.0 298.8
 98 66.8 0.0 130.2

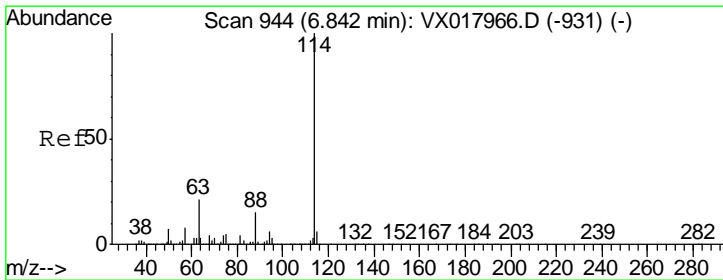
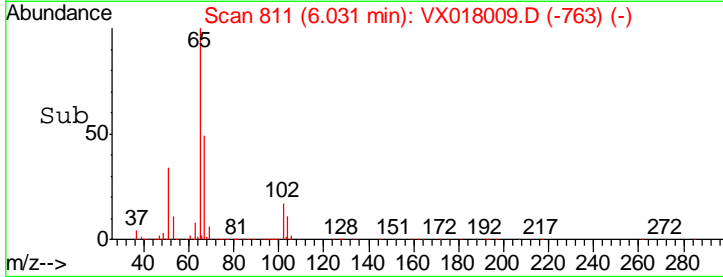
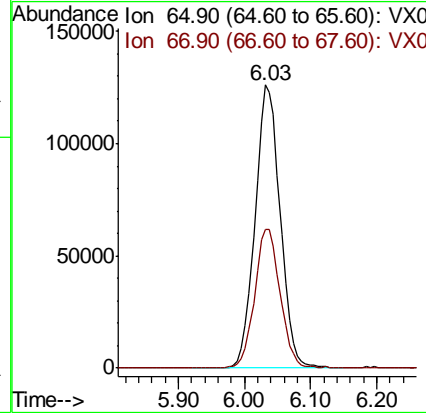
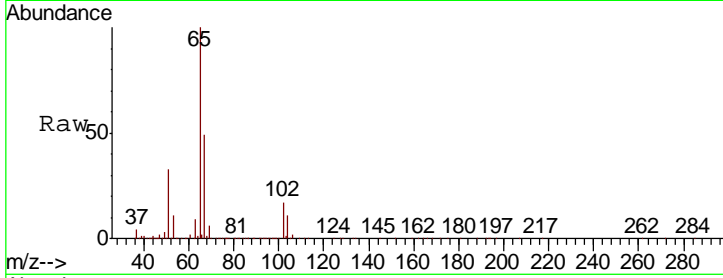




#33
 1,2-Dichloroethane-d4
 Concen: 47.119 ug/l
 RT: 6.03 min Scan# 811
 Delta R.T. -0.01 min
 Lab File: VX018009.D
 Acq: 20 Aug 2020 01:58

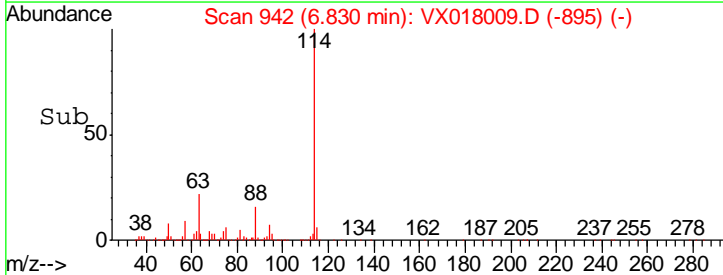
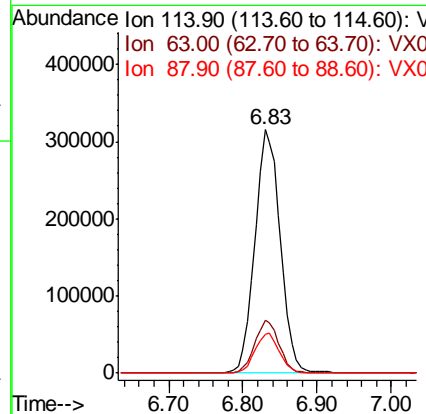
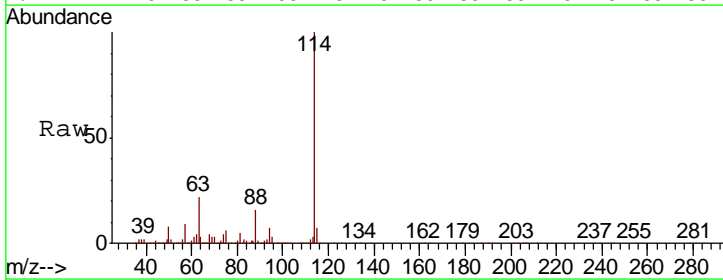
Instrument :
 MSVOA_X
 ClientSampled :
 DUP

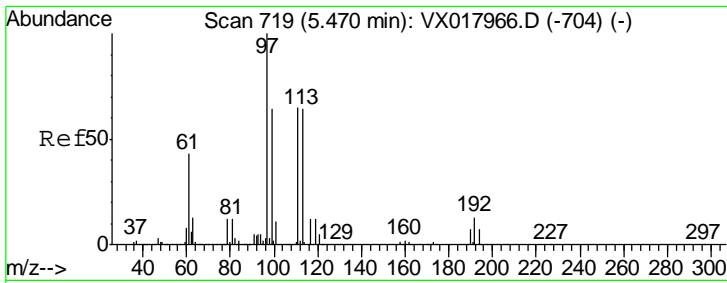
Tgt Ion: 65 Resp: 333108
 Ion Ratio Lower Upper
 65 100
 67 50.0 0.0 103.0



#34
 1,4-Difluorobenzene
 Concen: 50.000 ug/l
 RT: 6.83 min Scan# 942
 Delta R.T. -0.01 min
 Lab File: VX018009.D
 Acq: 20 Aug 2020 01:58

Tgt Ion: 114 Resp: 753755
 Ion Ratio Lower Upper
 114 100
 63 21.8 0.0 42.6
 88 16.0 0.0 30.2

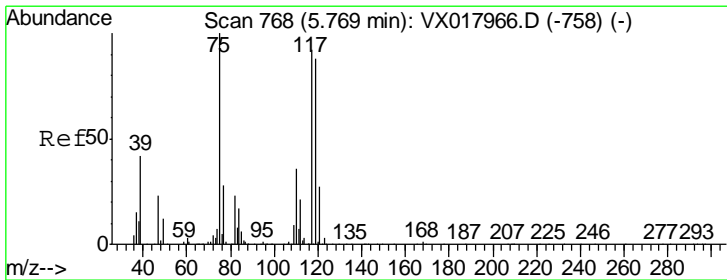
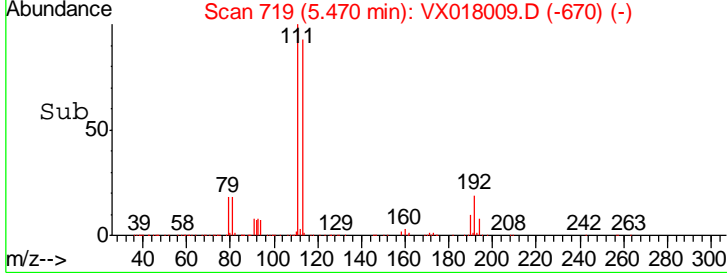
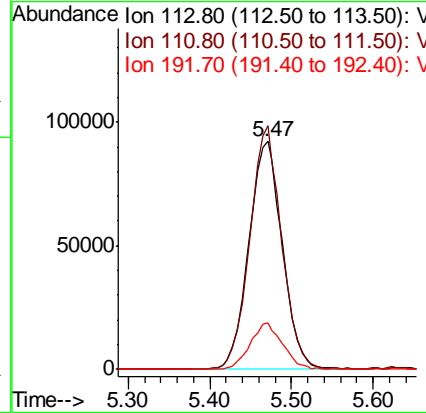
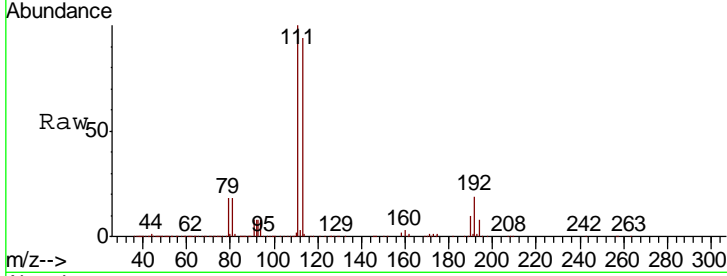




#35
 Dibromofluoromethane
 Concen: 46.894 ug/l
 RT: 5.47 min Scan# 719
 Delta R.T. 0.00 min
 Lab File: VX018009.D
 Acq: 20 Aug 2020 01:58

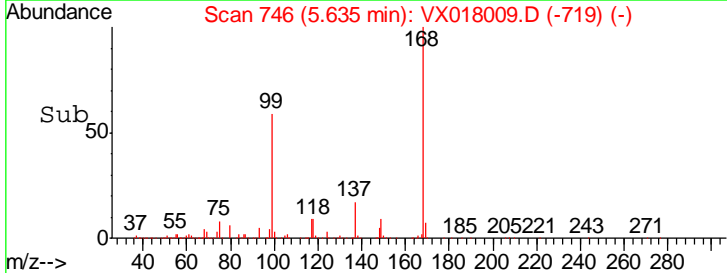
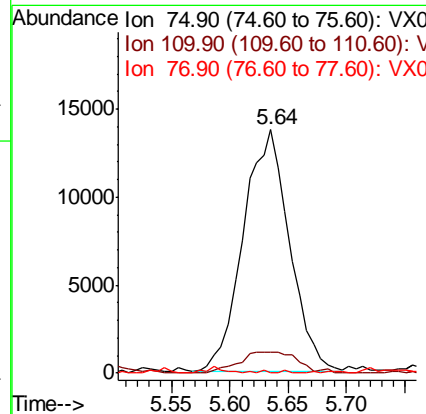
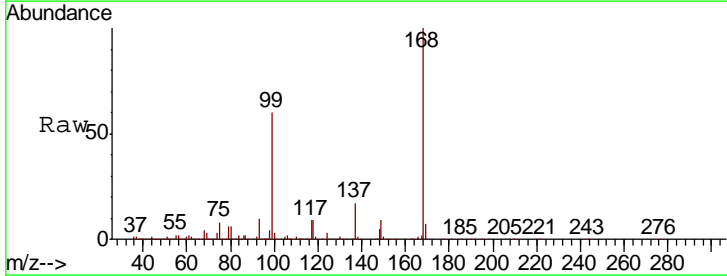
Instrument :
 MSVOA_X
 ClientSampled :
 DUP

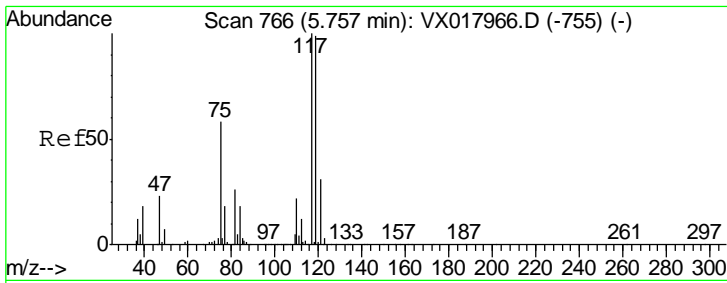
Tgt Ion	Resp	Lower	Upper
113	263221		
113	100		
111	101.2	83.5	125.3
192	19.7	16.2	24.4



#36
 1,1-Dichloropropene
 Concen: 6.007 ug/l
 RT: 5.64 min Scan# 746
 Delta R.T. -0.13 min
 Lab File: VX018009.D
 Acq: 20 Aug 2020 01:58

Tgt Ion	Resp	Lower	Upper
75	37900		
75	100		
110	11.2	18.7	56.1#
77	0.3	24.4	36.6#

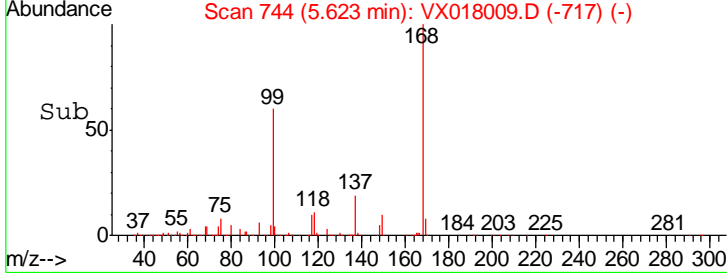
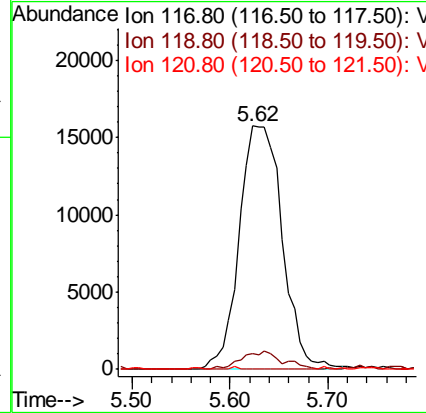
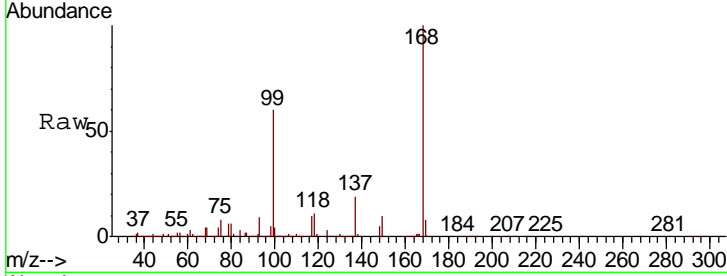




#38
 Carbon Tetrachloride
 Concen: 5.894 ug/l
 RT: 5.62 min Scan# 744
 Delta R.T. -0.13 min
 Lab File: VX018009.D
 Acq: 20 Aug 2020 01:58

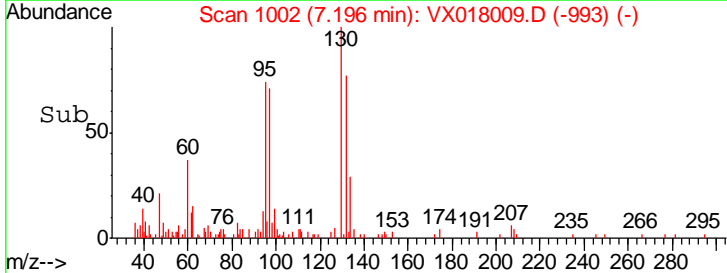
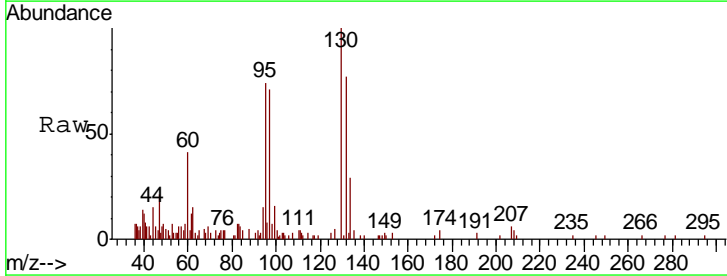
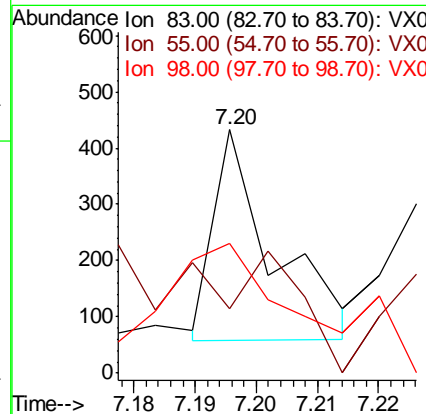
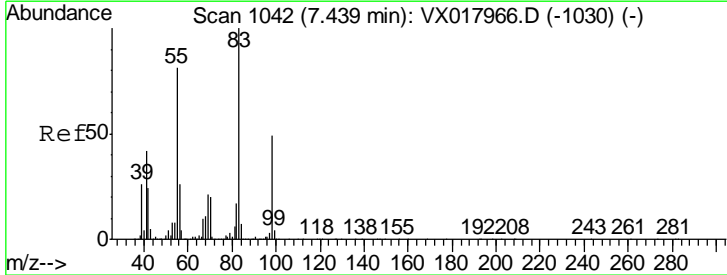
Instrument :
 MSVOA_X
 ClientSampled :
 DUP

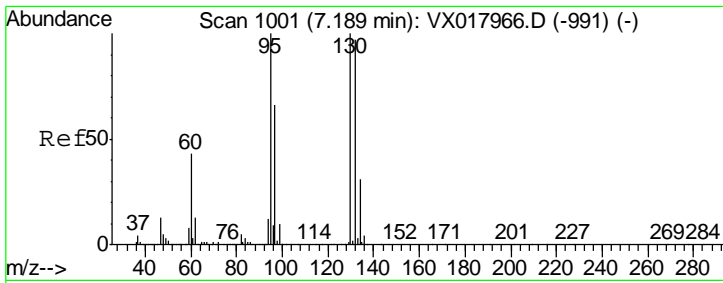
Tgt Ion	Resp	Lower	Upper
117	48122		
119	5.9	79.0	118.6#
121	0.0	24.7	37.1#



#39
 Methylcyclohexane
 Concen: 0.844 ug/l
 RT: 7.20 min Scan# 1002
 Delta R.T. -0.24 min
 Lab File: VX018009.D
 Acq: 20 Aug 2020 01:58

Tgt Ion	Resp	Lower	Upper
83	254		
55	91.9	64.5	96.7
98	44.5	39.0	58.6

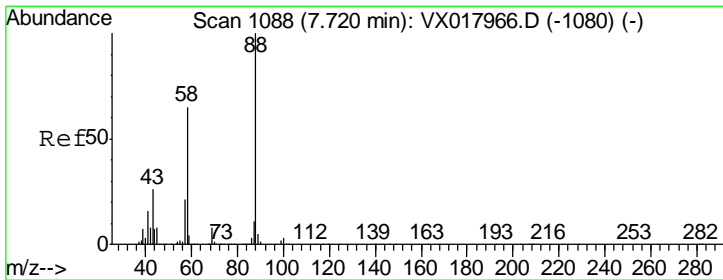
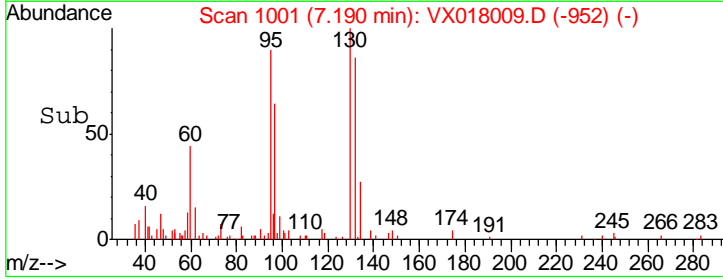
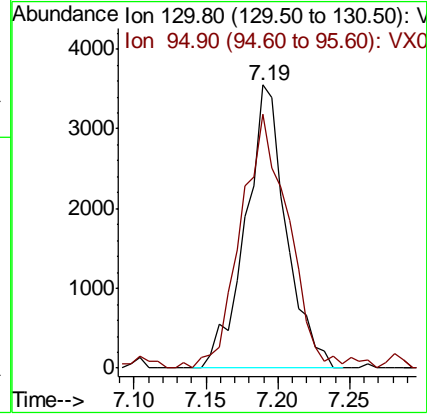
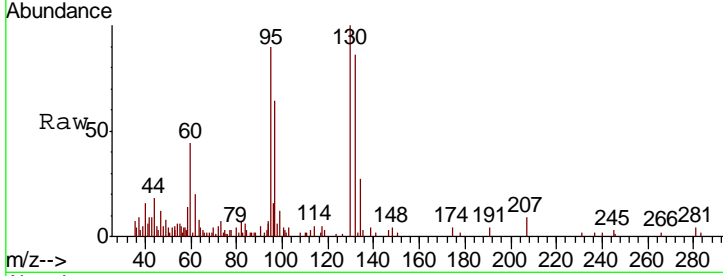




#44
 Trichloroethene
 Concen: 1.227 ug/l
 RT: 7.19 min Scan# 1001
 Delta R.T. 0.00 min
 Lab File: VX018009.D
 Acq: 20 Aug 2020 01:58

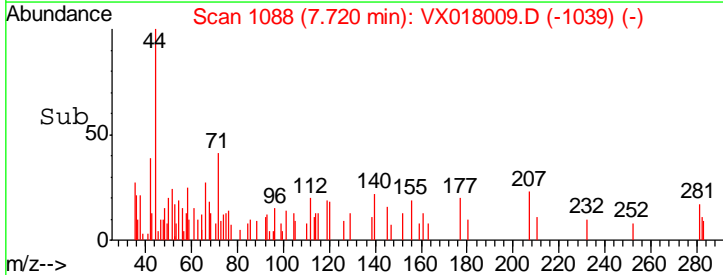
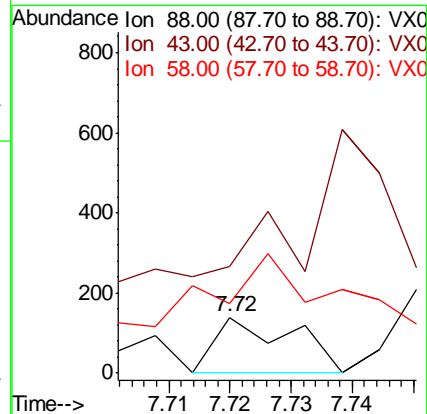
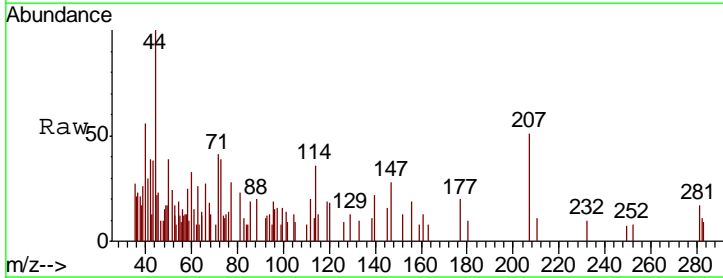
Instrument :
 MSVOA_X
 ClientSampled :
 DUP

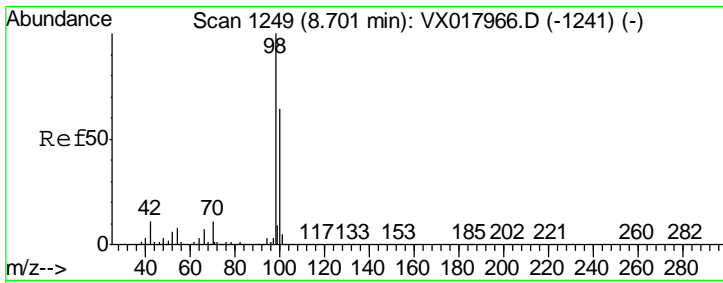
Tgt Ion	Resp	Lower	Upper
130	6915		
130	100		
95	89.5	0.0	200.6



#49
 1,4-Dioxane
 Concen: 0.986 ug/l
 RT: 7.72 min Scan# 1088
 Delta R.T. 0.00 min
 Lab File: VX018009.D
 Acq: 20 Aug 2020 01:58

Tgt Ion	Resp	Lower	Upper
88	122		
88	100		
43	0.0	27.3	40.9#
58	513.1	57.7	86.5#

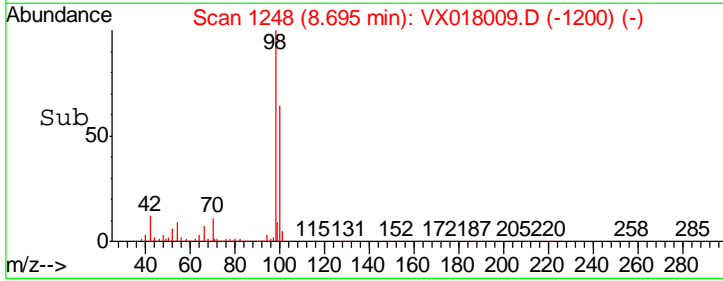
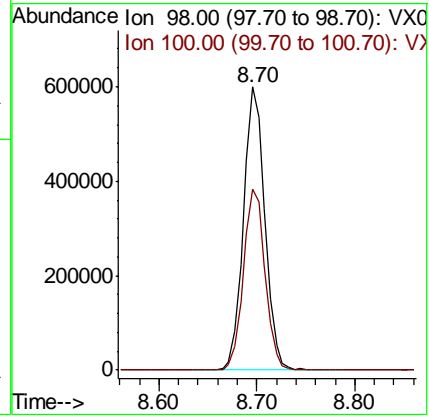
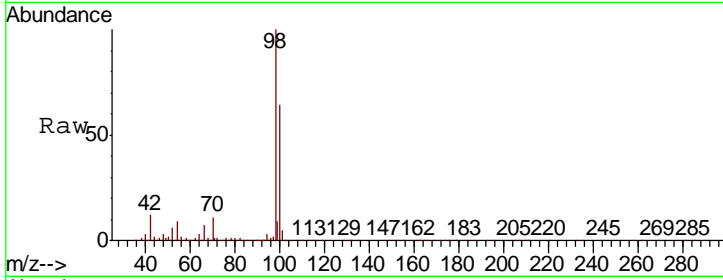




#50
 Toluene-d8
 Concen: 45.736 ug/l
 RT: 8.70 min Scan# 1248
 Delta R.T. -0.01 min
 Lab File: VX018009.D
 Acq: 20 Aug 2020 01:58

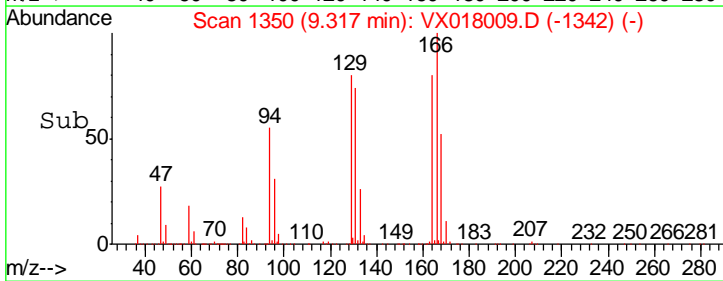
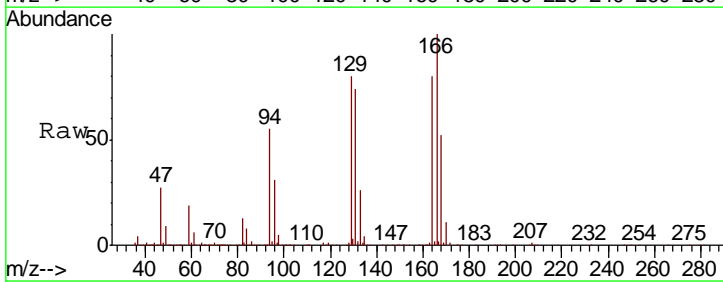
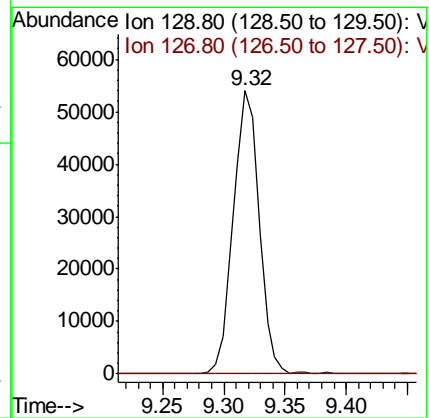
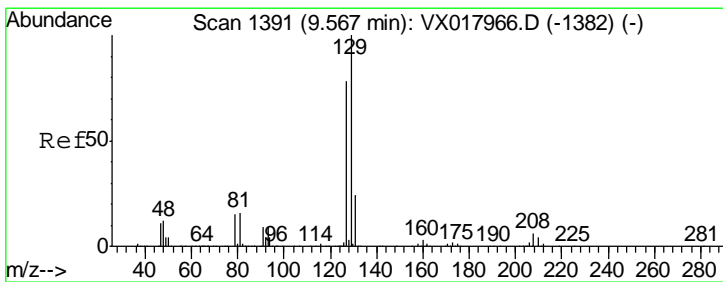
Instrument :
 MSVOA_X
 ClientSampled :
 DUP

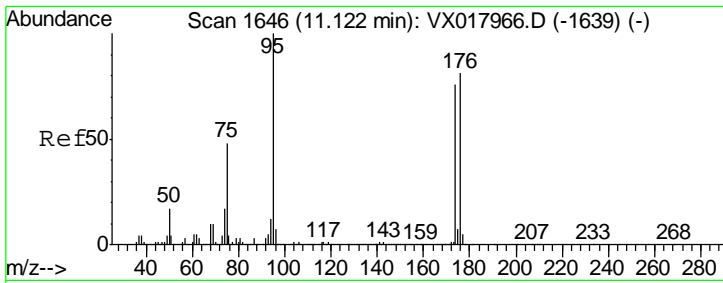
Tgt Ion: 98 Resp: 907439
 Ion Ratio Lower Upper
 98 100
 100 65.0 51.4 77.2



#60
 Dibromochloromethane
 Concen: 11.077 ug/l
 RT: 9.32 min Scan# 1350
 Delta R.T. -0.25 min
 Lab File: VX018009.D
 Acq: 20 Aug 2020 01:58

Tgt Ion: 129 Resp: 79011
 Ion Ratio Lower Upper
 129 100
 127 0.1 39.5 118.3#

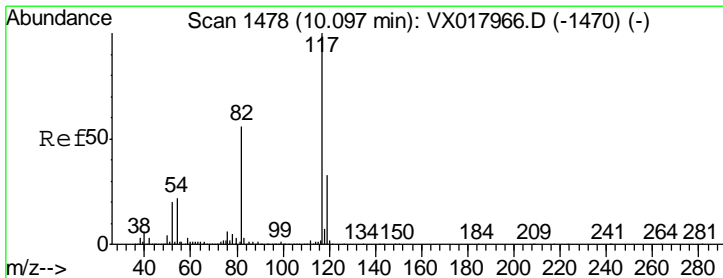
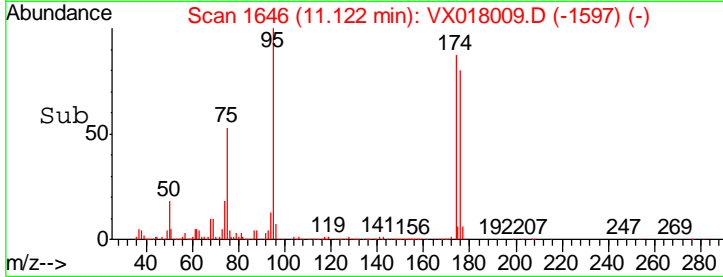
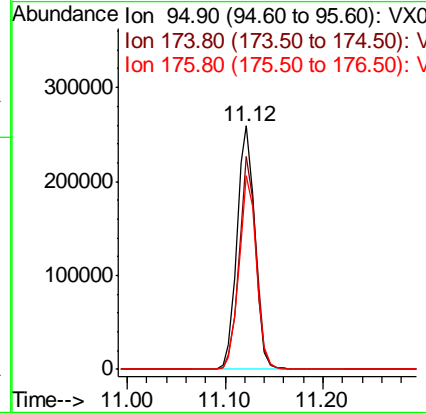
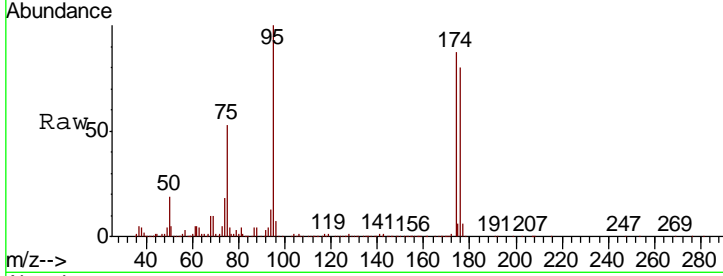




#62
 4-Bromofluorobenzene
 Concen: 44.750 ug/l
 RT: 11.12 min Scan# 1646
 Delta R.T. 0.00 min
 Lab File: VX018009.D
 Acq: 20 Aug 2020 01:58

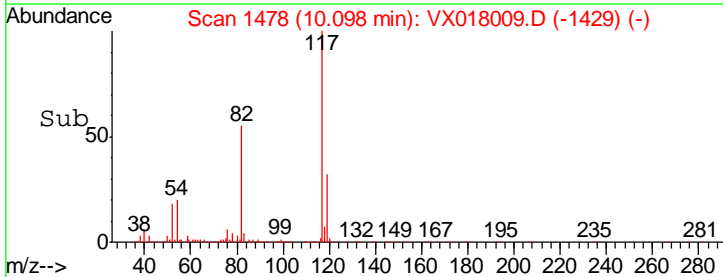
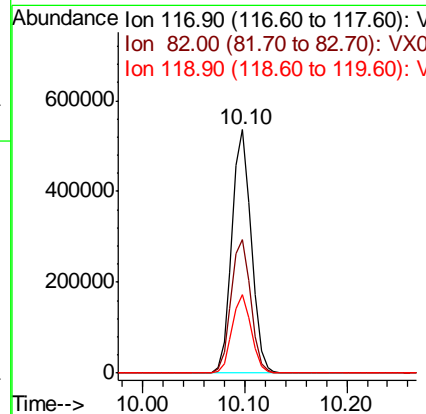
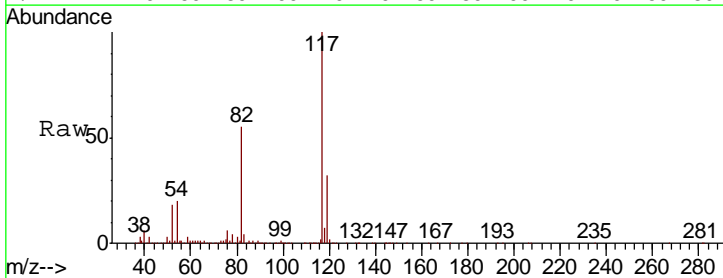
Instrument :
 MSVOA_X
 ClientSampled :
 DUP

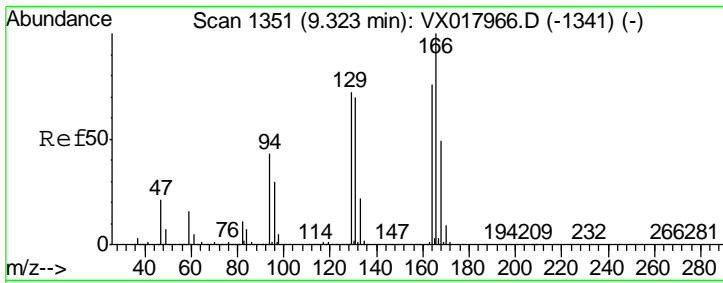
Tgt Ion	Resp	Lower	Upper
95	327932		
174	83.6	0.0	166.0
176	77.4	0.0	161.0



#63
 Chlorobenzene-d5
 Concen: 50.000 ug/l
 RT: 10.10 min Scan# 1478
 Delta R.T. 0.00 min
 Lab File: VX018009.D
 Acq: 20 Aug 2020 01:58

Tgt Ion	Resp	Lower	Upper
117	703119		
82	55.0	44.6	66.8
119	32.4	26.2	39.4

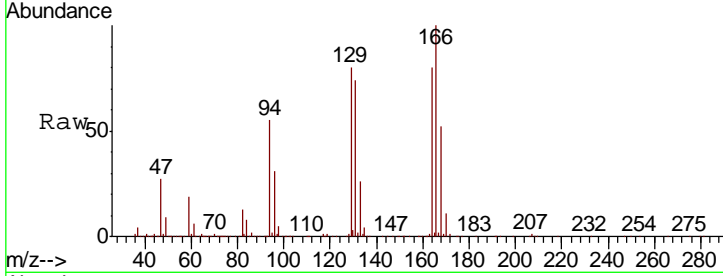




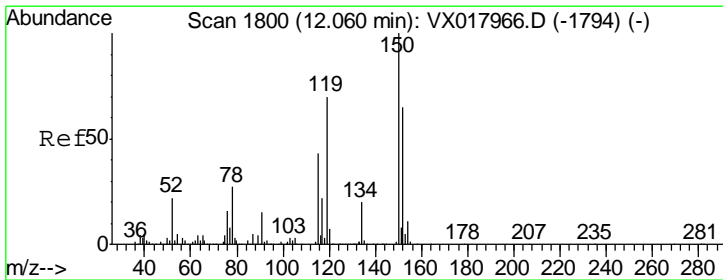
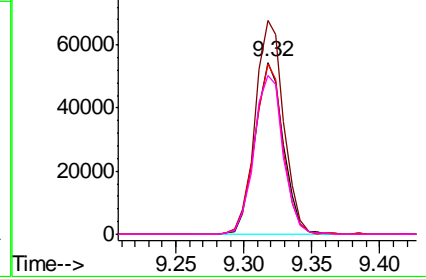
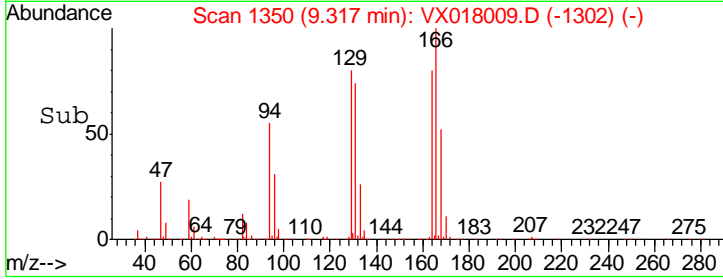
#64
 Tetrachloroethene
 Concen: 14.900 ug/l
 RT: 9.32 min Scan# 1350
 Delta R.T. -0.01 min
 Lab File: VX018009.D
 Acq: 20 Aug 2020 01:58

Instrument :
 MSVOA_X
 ClientSampled :
 DUP

Tgt Ion	Resp	Lower	Upper
164	100		
166	124.3	105.7	158.5
129	99.1	75.8	113.8
131	92.1	74.2	111.4

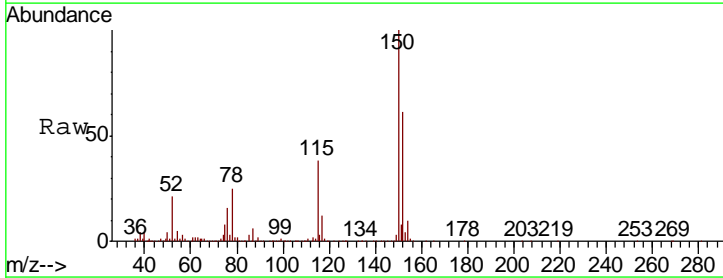


Abundance
 Ion 163.80 (163.50 to 164.50): V
 Ion 165.80 (165.50 to 166.50): V
 Ion 128.80 (128.50 to 129.50): V
 Ion 130.80 (130.50 to 131.50): V

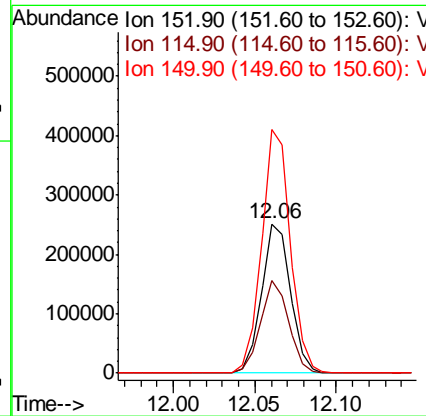
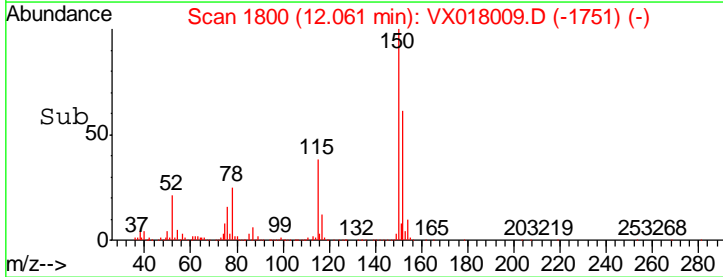


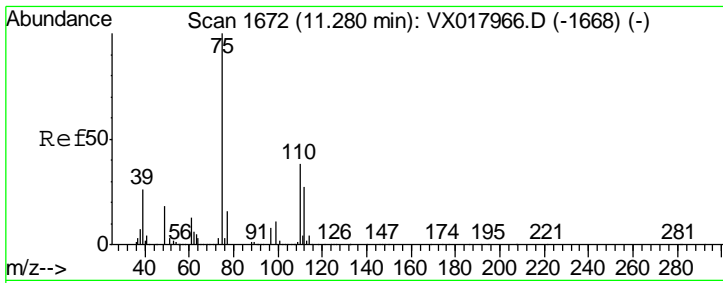
#72
 1,4-Dichlorobenzene-d4
 Concen: 50.000 ug/l
 RT: 12.06 min Scan# 1800
 Delta R.T. 0.00 min
 Lab File: VX018009.D
 Acq: 20 Aug 2020 01:58

Tgt Ion	Resp	Lower	Upper
152	100		
115	60.3	40.6	121.7
150	161.9	0.0	346.4



Abundance
 Ion 151.90 (151.60 to 152.60): V
 Ion 114.90 (114.60 to 115.60): V
 Ion 149.90 (149.60 to 150.60): V

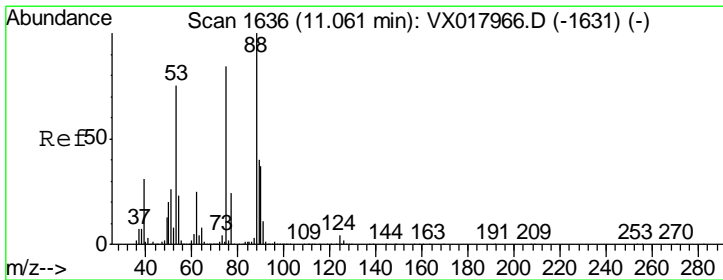
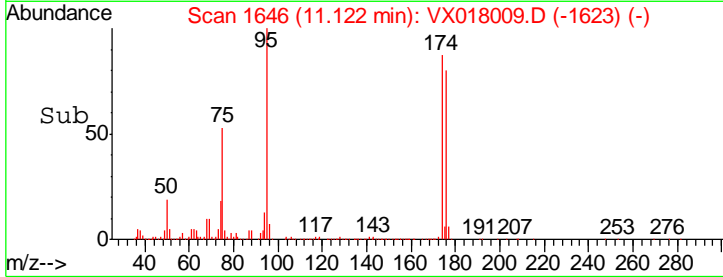
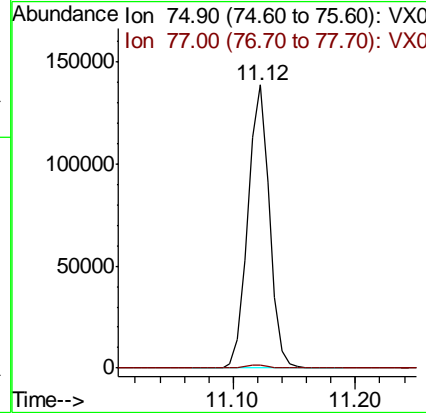
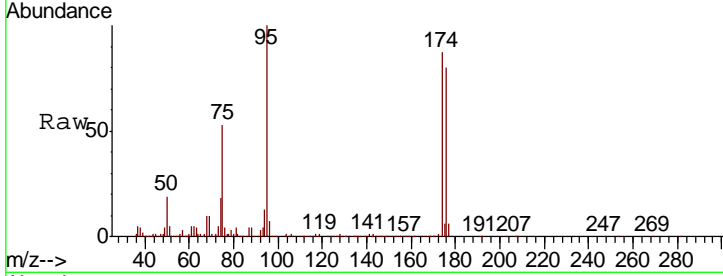




#76
 1,2,3-Trichloropropane
 Concen: 25.568 ug/l
 RT: 11.12 min Scan# 1646
 Delta R.T. -0.16 min
 Lab File: VX018009.D
 Acq: 20 Aug 2020 01:58

Instrument :
 MSVOA_X
 ClientSampled :
 DUP

Tgt Ion: 75 Resp: 168392
 Ion Ratio Lower Upper
 75 100
 77 1.3 21.1 63.1#



#81
 trans-1,4-Dichloro-2-butene
 Concen: 67.170 ug/l
 RT: 11.12 min Scan# 1646
 Delta R.T. 0.06 min
 Lab File: VX018009.D
 Acq: 20 Aug 2020 01:58

Tgt Ion: 75 Resp: 168392
 Ion Ratio Lower Upper
 75 100
 53 0.1 75.2 112.8#
 89 0.0 38.4 57.6#

