

Data Path : Z:\voasrv\HPCHEM1\MSVOA_X\Data\VX081922\
 Data File : VX030705.D
 Acq On : 19 Aug 2022 16:12
 Operator : JC/MD
 Sample : VSTDCCC050EC
 Misc : 5.0mL/MSVOA_X/WATER
 ALS Vial : 13 Sample Multiplier: 1

Instrument :
 MSVOA_X
 ClientSampleId :
 VSTD050792

Quant Time: Aug 20 03:56:47 2022
 Quant Method : Z:\voasrv\HPCHEM1\MSVOA_X\Method\SFAMXML080422WMA.M
 Quant Title : VOC Analysis
 QLast Update : Sat Aug 20 02:12:38 2022
 Response via : Initial Calibration

Compound	R.T.	QIon	Response	Conc	Units	Dev(Min)
Internal Standards						
1) 1,4-Difluorobenzene	6.769	114	293983	50.000	ug/L	0.00
28) Chlorobenzene-d5	10.055	117	269919	50.000	ug/L	0.00
58) 1,4-Dichlorobenzene-d4	12.024	152	139406	50.000	ug/L	0.00
System Monitoring Compounds						
4) Vinyl Chloride-d3	1.368	65	88247	46.743	ug/L	0.00
Spiked Amount	50.000	Range 60 - 135	Recovery	=	93.480%	
7) Chloroethane-d5	1.660	69	69651	52.335	ug/L	0.00
Spiked Amount	50.000	Range 70 - 130	Recovery	=	104.660%	
11) 1,1-Dichloroethene-d2	2.306	63	183050	51.258	ug/L	0.00
Spiked Amount	50.000	Range 60 - 125	Recovery	=	102.520%	
21) 2-Butanone-d5	4.465	46	181499	103.759	ug/L	0.00
Spiked Amount	100.000	Range 40 - 130	Recovery	=	103.760%	
24) Chloroform-d	5.062	84	204530	52.628	ug/L	0.00
Spiked Amount	50.000	Range 70 - 125	Recovery	=	105.260%	
26) 1,2-Dichloroethane-d4	5.964	65	120367	45.614	ug/L	0.00
Spiked Amount	50.000	Range 70 - 125	Recovery	=	91.220%	
32) Benzene-d6	5.976	84	405307	52.421	ug/L	0.00
Spiked Amount	50.000	Range 70 - 125	Recovery	=	104.840%	
36) 1,2-Dichloropropane-d6	7.312	67	134852	53.758	ug/L	0.00
Spiked Amount	50.000	Range 70 - 120	Recovery	=	107.520%	
41) Toluene-d8	8.653	98	380795	52.249	ug/L	0.00
Spiked Amount	50.000	Range 80 - 120	Recovery	=	104.500%	
43) trans-1,3-Dichloroprop...	8.952	79	57927	46.418	ug/L	0.00
Spiked Amount	50.000	Range 60 - 125	Recovery	=	92.840%	
47) 2-Hexanone-d5	9.390	63	140624	109.979	ug/L	0.00
Spiked Amount	100.000	Range 45 - 130	Recovery	=	109.980%	
56) 1,1,2,2-Tetrachloroeth...	11.195	84	190948	57.944	ug/L	0.00
Spiked Amount	50.000	Range 65 - 120	Recovery	=	115.880%	
66) 1,2-Dichlorobenzene-d4	12.323	152	146990	54.362	ug/L	0.00
Spiked Amount	50.000	Range 80 - 120	Recovery	=	108.720%	
Target Compounds						
2) Dichlorodifluoromethane	1.166	85	94866	42.884	ug/L	100
3) Chloromethane	1.288	50	91212	47.952	ug/L	100
5) Vinyl chloride	1.374	62	100914	49.668	ug/L	100
6) Bromomethane	1.605	94	36681	38.418	ug/L	98
8) Chloroethane	1.685	64	60116	51.944	ug/L	97
9) Trichlorofluoromethane	1.886	101	151561	50.473	ug/L	100
10) 1,1,2-Trichloro-1,2,2-...	2.325	101	107393	60.129	ug/L	98
12) 1,1-Dichloroethene	2.319	96	97479	59.242	ug/L #	68
13) Acetone	2.386	43	119173	92.958	ug/L	91
14) Carbon disulfide	2.508	76	221438	41.521	ug/L	100
15) Methyl Acetate	2.709	43	134875	50.827	ug/L	94
16) Methylene chloride	2.788	84	120832	57.913	ug/L	90
17) trans-1,2-Dichloroethene	3.093	96	101352	53.167	ug/L	91
18) Methyl tert-butyl Ether	3.123	73	348051	53.689	ug/L	96
19) 1,1-Dichloroethane	3.611	63	203153	55.100	ug/L	97
20) cis-1,2-Dichloroethene	4.489	96	124516	58.065	ug/L	88
22) 2-Butanone	4.568	43	199790	98.788	ug/L	91
23) Bromochloromethane	4.903	128	62691	58.297	ug/L	93
25) Chloroform	5.099	83	217614	56.175	ug/L	98

Data Path : Z:\voasrv\HPCHEM1\MSVOA_X\Data\VX081922\
 Data File : VX030705.D
 Acq On : 19 Aug 2022 16:12
 Operator : JC/MD
 Sample : VSTDCCC050EC
 Misc : 5.0mL/MSVOA_X/WATER
 ALS Vial : 13 Sample Multiplier: 1

Instrument :
 MSVOA_X
 ClientSampleId :
 VSTD050792

Quant Time: Aug 20 03:56:47 2022
 Quant Method : Z:\voasrv\HPCHEM1\MSVOA_X\Method\SFAMXMLM080422WMA.M
 Quant Title : VOC Analysis
 QLast Update : Sat Aug 20 02:12:38 2022
 Response via : Initial Calibration

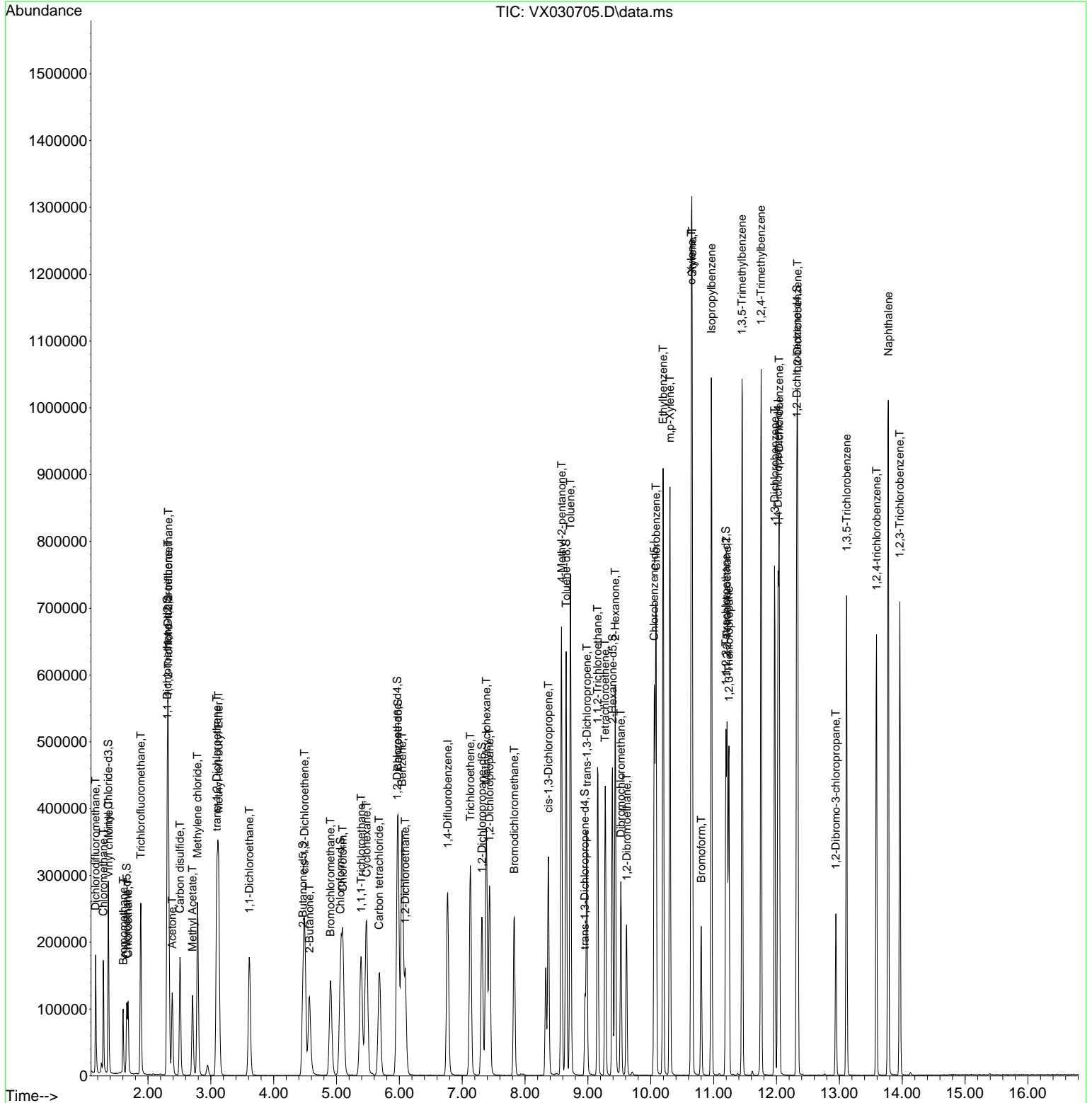
Compound	R.T.	QIon	Response	Conc	Units	Dev(Min)
27) 1,2-Dichloroethane	6.092	62	155840	48.334	ug/L	98
29) Cyclohexane	5.477	56	163936	45.686	ug/L	96
30) 1,1,1-Trichloroethane	5.391	97	178017	49.999	ug/L	97
31) Carbon tetrachloride	5.678	117	146000	49.684	ug/L	100
33) Benzene	6.043	78	460101	53.166	ug/L	100
34) Trichloroethene	7.129	95	124932	49.844	ug/L	85
35) Methylcyclohexane	7.385	83	168681	46.228	ug/L	96
37) 1,2-Dichloropropane	7.434	63	125867	54.701	ug/L	99
38) Bromodichloromethane	7.830	83	161767	53.120	ug/L	97
39) cis-1,3-Dichloropropene	8.372	75	178272	51.936	ug/L	100
40) 4-Methyl-2-pentanone	8.580	43	388011	96.832	ug/L	92
42) Toluene	8.720	91	496520	54.311	ug/L	99
44) trans-1,3-Dichloropropene	8.982	75	174305	51.882	ug/L	97
45) 1,1,2-Trichloroethane	9.153	97	130632	61.054	ug/L	97
46) Tetrachloroethene	9.275	164	80927	51.088	ug/L	99
48) 2-Hexanone	9.433	43	301590	96.869	ug/L	93
49) Dibromochloromethane	9.525	129	127486	56.006	ug/L	99
50) 1,2-Dibromoethane	9.616	107	130190	55.331	ug/L	95
51) Chlorobenzene	10.085	112	324254	56.930	ug/L	92
52) Ethylbenzene	10.195	91	536828	53.853	ug/L	100
53) m,p-Xylene	10.305	106	204799	55.121	ug/L	95
54) o-Xylene	10.646	106	206582	55.797	ug/L	91
55) Styrene	10.659	104	363485	58.308	ug/L	94
57) 1,1,2,2-Tetrachloroethane	11.213	83	204191	62.721	ug/L	98
59) Bromoform	10.805	173	83184	54.795	ug/L	99
60) Isopropylbenzene	10.963	105	542136	54.864	ug/L	98
61) 1,2,3-Trichloropropane	11.244	75	168244	56.197	ug/L	98
62) 1,3,5-Trimethylbenzene	11.451	105	466821	55.335	ug/L	98
63) 1,2,4-Trimethylbenzene	11.756	105	462725	54.313	ug/L	99
64) 1,3-Dichlorobenzene	11.969	146	239248	55.697	ug/L	97
65) 1,4-Dichlorobenzene	12.042	146	245428	56.205	ug/L	94
67) 1,2-Dichlorobenzene	12.335	146	253221	57.005	ug/L	98
68) 1,2-Dibromo-3-chloropr...	12.945	75	52402	53.062	ug/L	97
69) 1,3,5-Trichlorobenzene	13.115	180	163355	54.228	ug/L	99
70) 1,2,4-trichlorobenzene	13.591	180	143483	54.235	ug/L	95
71) Naphthalene	13.780	128	615568	56.211	ug/L	100
72) 1,2,3-Trichlorobenzene	13.963	180	155589	55.676	ug/L	99

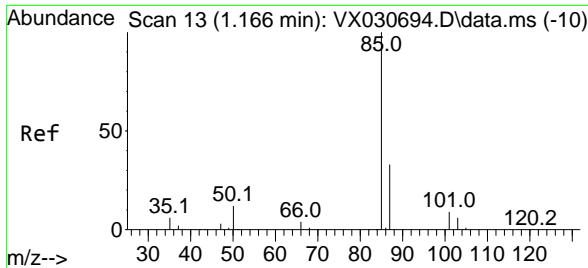
(#) = qualifier out of range (m) = manual integration (+) = signals summed

Data Path : Z:\voasrv\HPCHEM1\MSVOA_X\Data\VX081922\
 Data File : VX030705.D
 Acq On : 19 Aug 2022 16:12
 Operator : JC/MD
 Sample : VSTDCCC050EC
 Misc : 5.0mL/MSVOA_X/WATER
 ALS Vial : 13 Sample Multiplier: 1

Instrument :
 MSVOA_X
 Client Sample Id :
 VSTD050792

Quant Time: Aug 20 03:56:47 2022
 Quant Method : Z:\voasrv\HPCHEM1\MSVOA_X\Method\SFAMXML080422WMA.M
 Quant Title : VOC Analysis
 QLast Update : Sat Aug 20 02:12:38 2022
 Response via : Initial Calibration

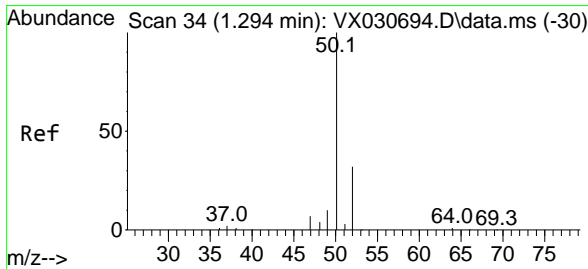
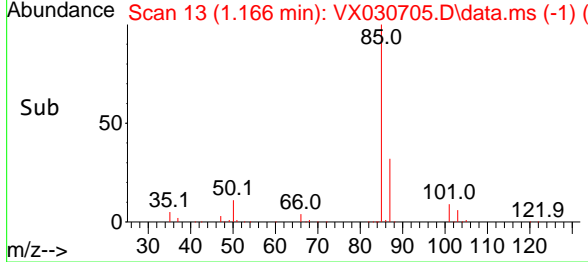
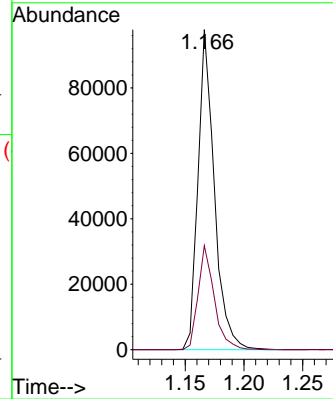
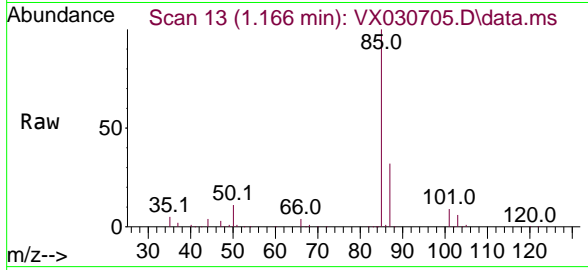




#2
 Dichlorodifluoromethane
 Concen: 42.884 ug/L
 RT: 1.166 min Scan# 11
 Delta R.T. 0.000 min
 Lab File: VX030705.D
 Acq: 19 Aug 2022 16:12

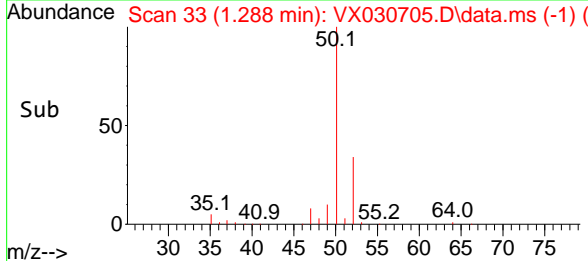
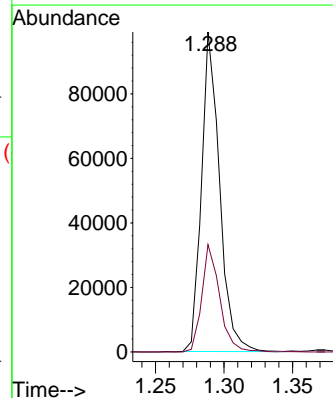
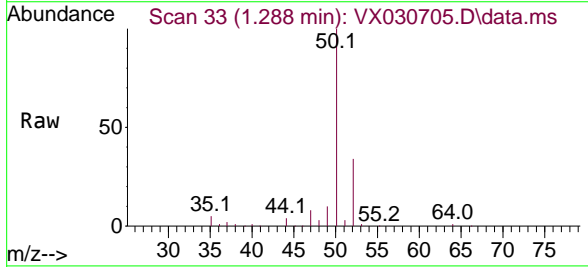
Instrument : MSVOA_X
 ClientSampleId : VSTD050792

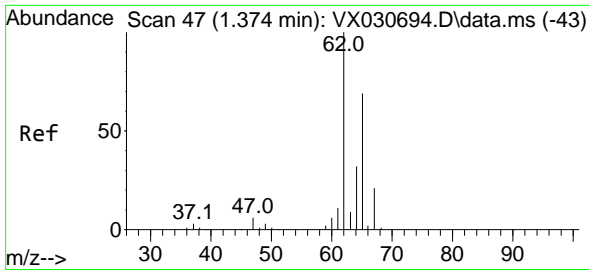
Tgt Ion: 85 Resp: 94866
 Ion Ratio Lower Upper
 85 100
 87 32.1 25.6 38.4



#3
 Chloromethane
 Concen: 47.952 ug/L
 RT: 1.288 min Scan# 33
 Delta R.T. -0.006 min
 Lab File: VX030705.D
 Acq: 19 Aug 2022 16:12

Tgt Ion: 50 Resp: 91212
 Ion Ratio Lower Upper
 50 100
 52 33.6 23.3 43.3

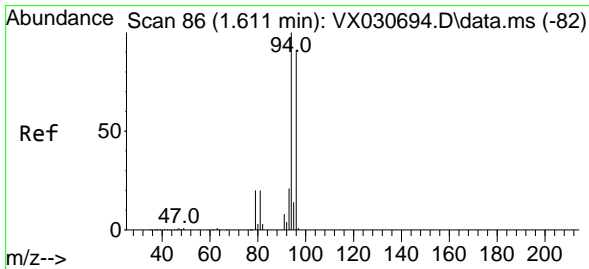
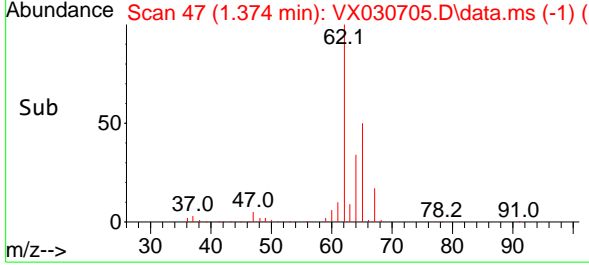
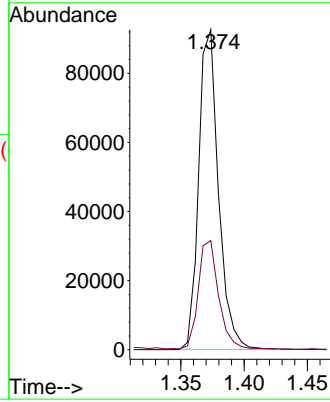
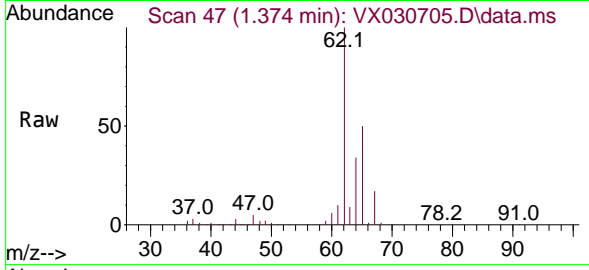




#5
 Vinyl chloride
 Concen: 49.668 ug/L
 RT: 1.374 min Scan# 41
 Delta R.T. 0.000 min
 Lab File: VX030705.D
 Acq: 19 Aug 2022 16:12

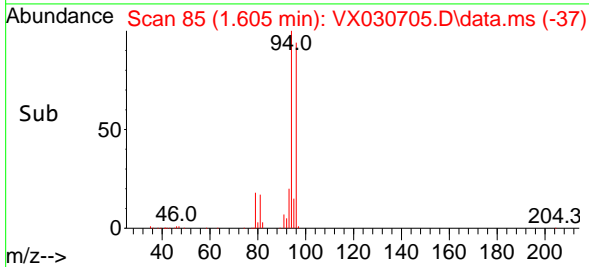
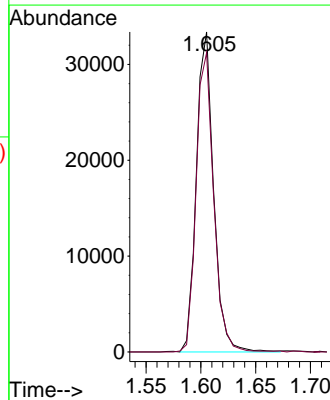
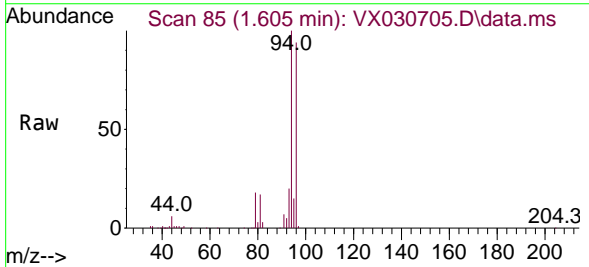
Instrument :
 MSVOA_X
 ClientSampleId :
 VSTD050792

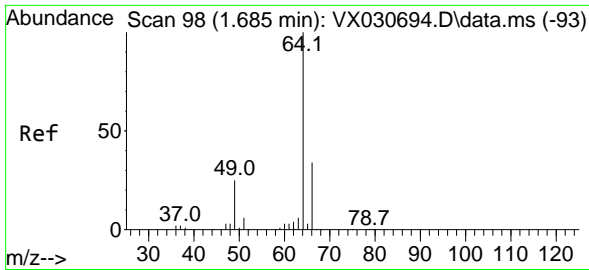
Tgt Ion: 62 Resp: 100914
 Ion Ratio Lower Upper
 62 100
 64 34.1 23.8 44.2



#6
 Bromomethane
 Concen: 38.418 ug/L
 RT: 1.605 min Scan# 85
 Delta R.T. -0.006 min
 Lab File: VX030705.D
 Acq: 19 Aug 2022 16:12

Tgt Ion: 94 Resp: 36681
 Ion Ratio Lower Upper
 94 100
 96 93.5 63.8 118.6

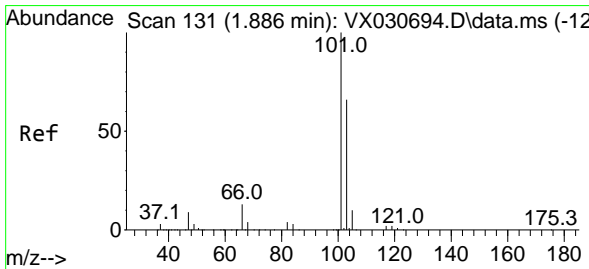
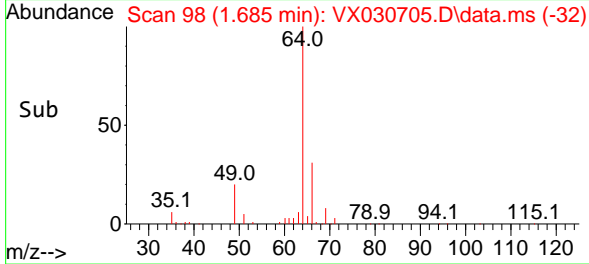
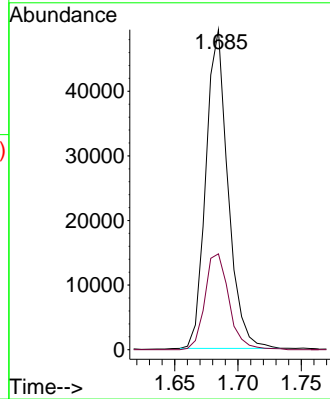
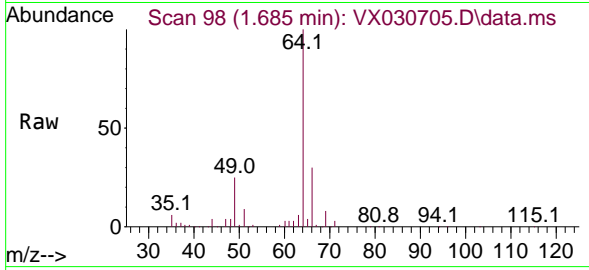




#8
 Chloroethane
 Concen: 51.944 ug/L
 RT: 1.685 min Scan# 98
 Delta R.T. 0.000 min
 Lab File: VX030705.D
 Acq: 19 Aug 2022 16:12

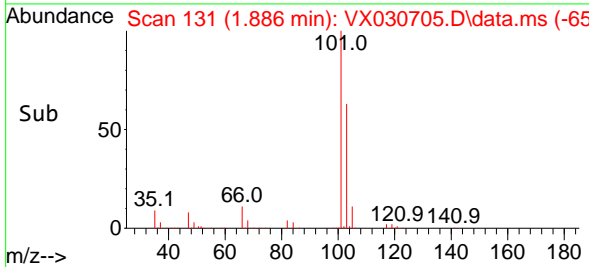
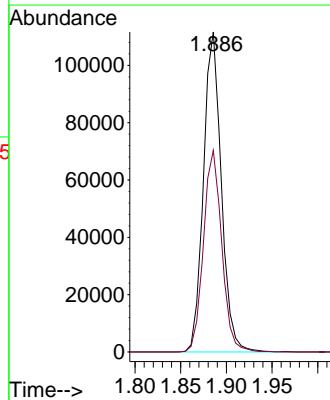
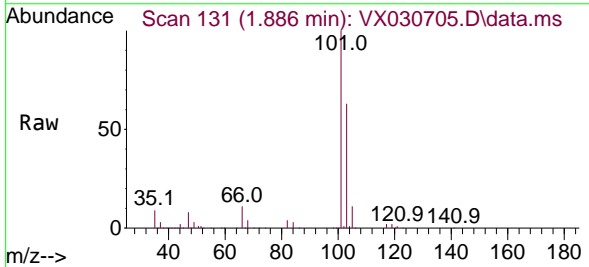
Instrument :
 MSVOA_X
 ClientSampleId :
 VSTD050792

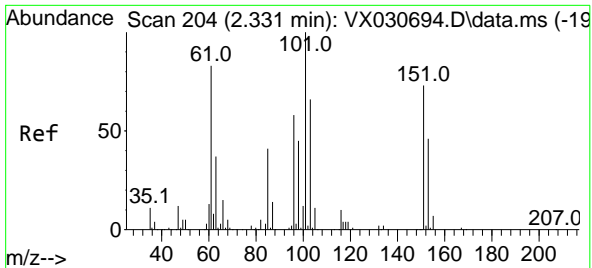
Tgt Ion: 64 Resp: 60116
 Ion Ratio Lower Upper
 64 100
 66 29.9 22.1 41.1



#9
 Trichlorofluoromethane
 Concen: 50.473 ug/L
 RT: 1.886 min Scan# 131
 Delta R.T. 0.000 min
 Lab File: VX030705.D
 Acq: 19 Aug 2022 16:12

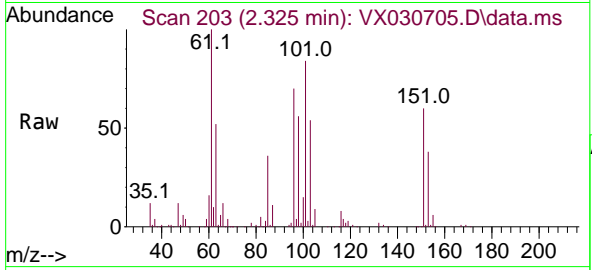
Tgt Ion: 101 Resp: 151561
 Ion Ratio Lower Upper
 101 100
 103 64.4 51.5 77.3





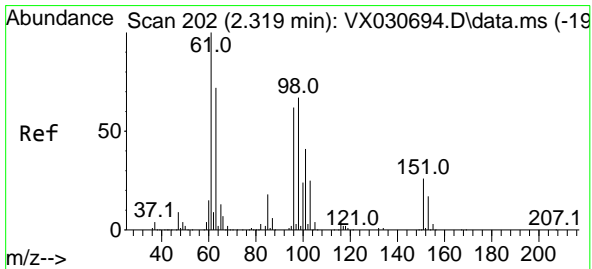
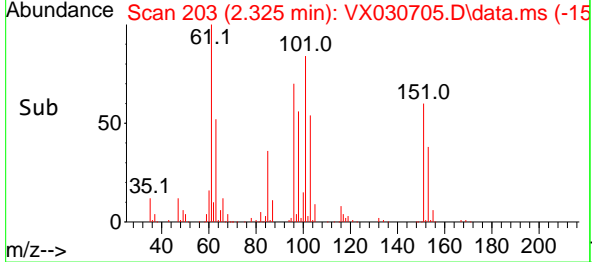
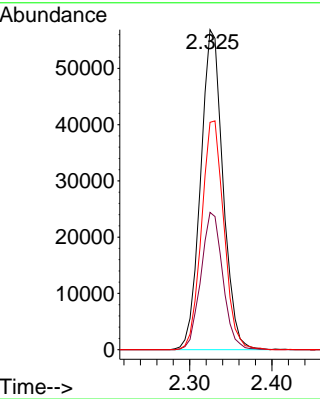
#10
 1,1,2-Trichloro-1,2,2-trifluoroethane
 Concen: 60.129 ug/L
 RT: 2.325 min Scan# 203
 Delta R.T. -0.006 min
 Lab File: VX030705.D
 Acq: 19 Aug 2022 16:12

Instrument :
 MSVOA_X
 ClientSampleId :
 VSTD050792

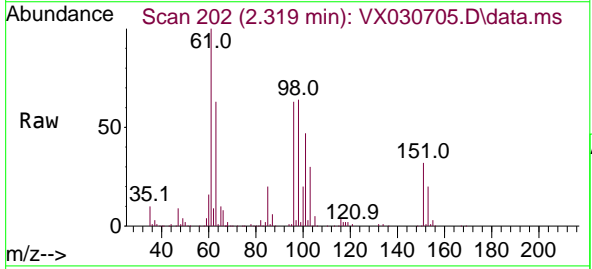


Tgt Ion: 101 Resp: 107393

Ion	Ratio	Lower	Upper
101	100		
85	42.1	35.3	52.9
151	71.4	58.3	87.5

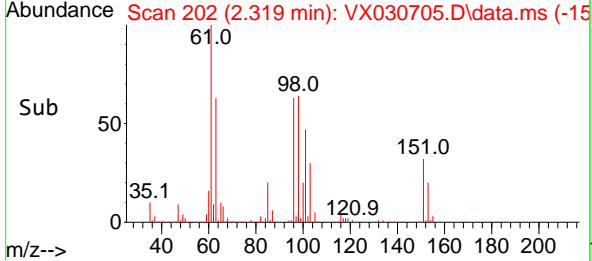
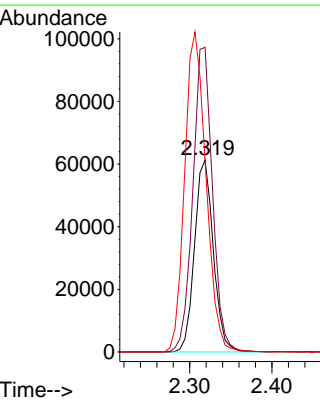


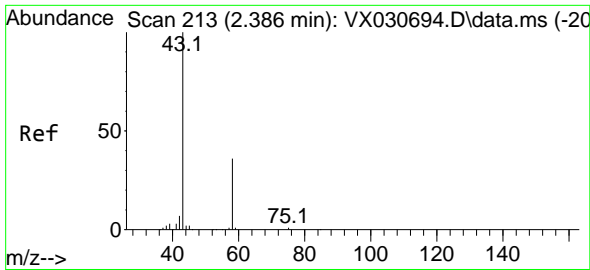
#12
 1,1-Dichloroethene
 Concen: 59.242 ug/L
 RT: 2.319 min Scan# 202
 Delta R.T. 0.000 min
 Lab File: VX030705.D
 Acq: 19 Aug 2022 16:12



Tgt Ion: 96 Resp: 97479

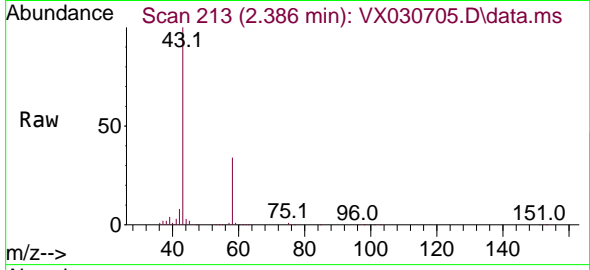
Ion	Ratio	Lower	Upper
96	100		
61	158.8	130.2	241.8
63	99.6	113.5	210.9



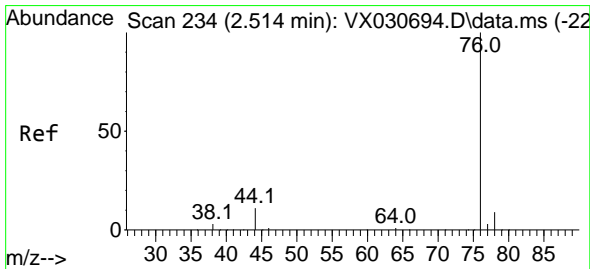
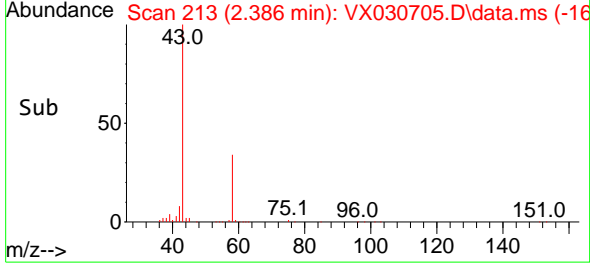
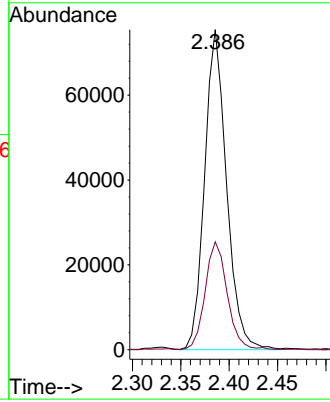


#13
 Acetone
 Concen: 92.958 ug/L
 RT: 2.386 min Scan# 213
 Delta R.T. -0.000 min
 Lab File: VX030705.D
 Acq: 19 Aug 2022 16:12

Instrument : MSVOA_X
 ClientSampleId : VSTD050792

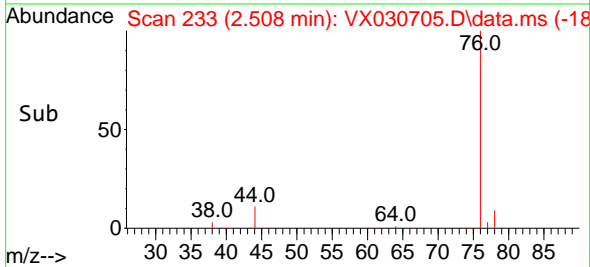
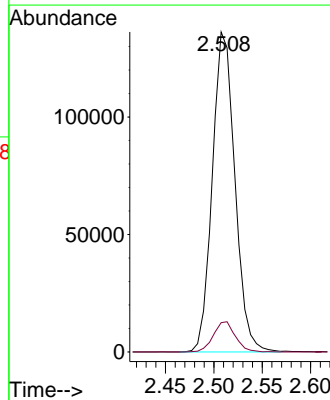
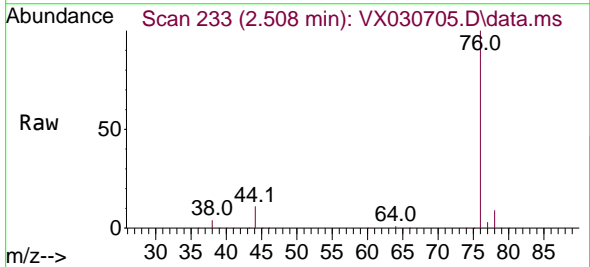


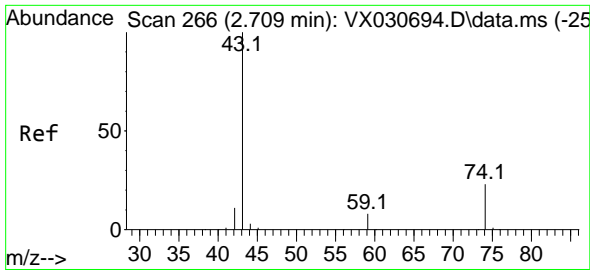
Tgt Ion: 43 Resp: 119173
 Ion Ratio Lower Upper
 43 100
 58 33.7 0.0 57.8



#14
 Carbon disulfide
 Concen: 41.521 ug/L
 RT: 2.508 min Scan# 233
 Delta R.T. -0.006 min
 Lab File: VX030705.D
 Acq: 19 Aug 2022 16:12

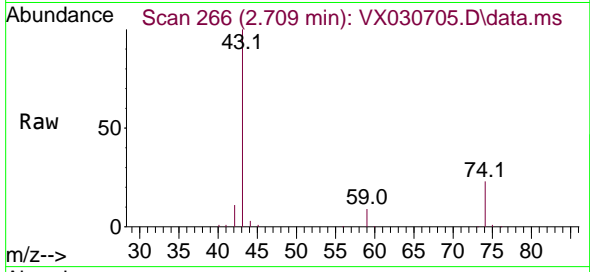
Tgt Ion: 76 Resp: 221438
 Ion Ratio Lower Upper
 76 100
 78 9.1 7.4 11.2



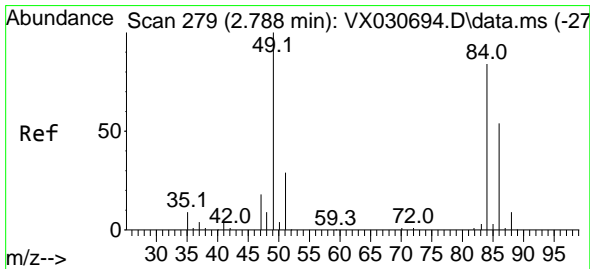
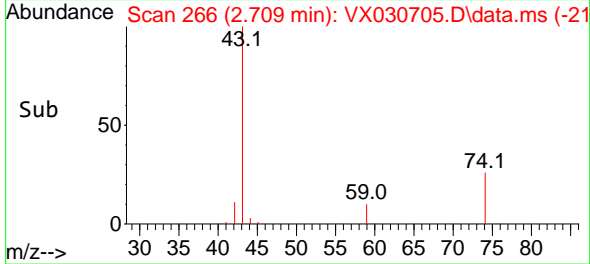
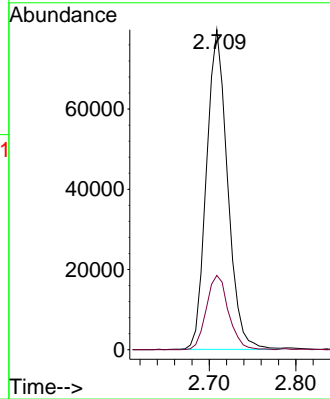


#15
 Methyl Acetate
 Concen: 50.827 ug/L
 RT: 2.709 min Scan# 20
 Delta R.T. -0.000 min
 Lab File: VX030705.D
 Acq: 19 Aug 2022 16:12

Instrument : MSVOA_X
 ClientSampleId : VSTD050792

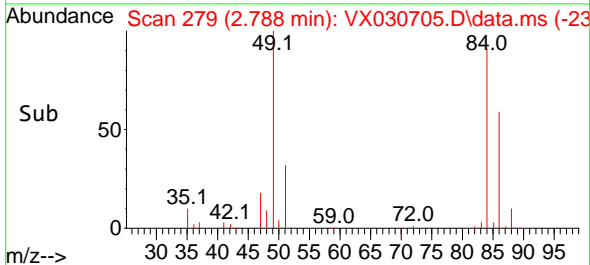
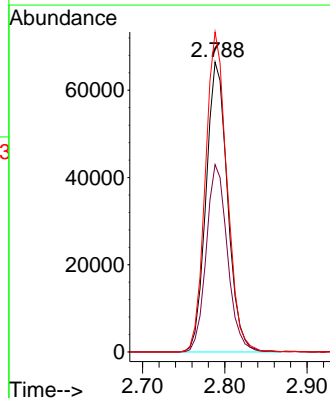
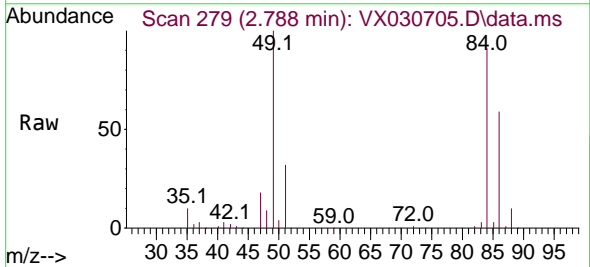


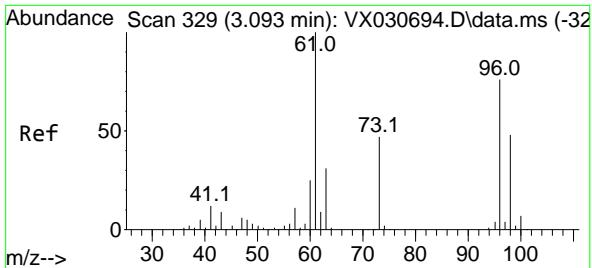
Tgt Ion: 43 Resp: 134875
 Ion Ratio Lower Upper
 43 100
 74 24.3 17.2 25.8



#16
 Methylene chloride
 Concen: 57.913 ug/L
 RT: 2.788 min Scan# 279
 Delta R.T. -0.000 min
 Lab File: VX030705.D
 Acq: 19 Aug 2022 16:12

Tgt Ion: 84 Resp: 120832
 Ion Ratio Lower Upper
 84 100
 86 64.6 44.2 82.2
 49 110.4 89.0 165.2



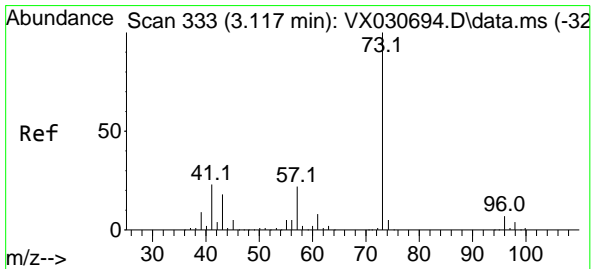
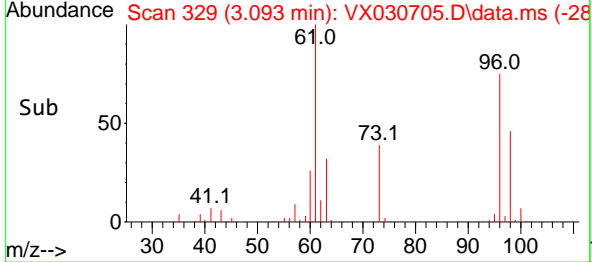
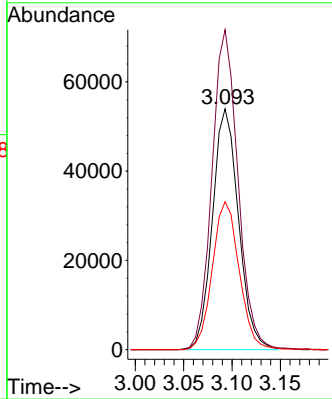
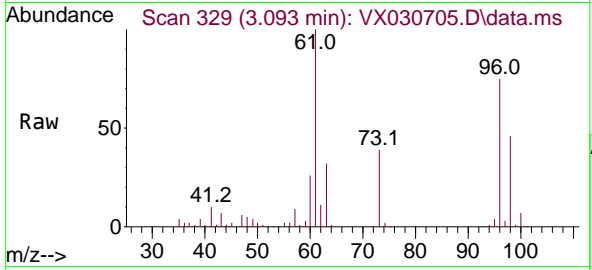


#17
 trans-1,2-Dichloroethene
 Concen: 53.167 ug/L
 RT: 3.093 min Scan# 311
 Delta R.T. 0.000 min
 Lab File: VX030705.D
 Acq: 19 Aug 2022 16:12

Instrument : MSVOA_X
 ClientSampleId : VSTD050792

Tgt Ion: 96 Resp: 101352

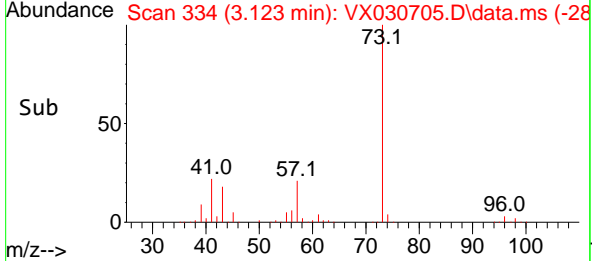
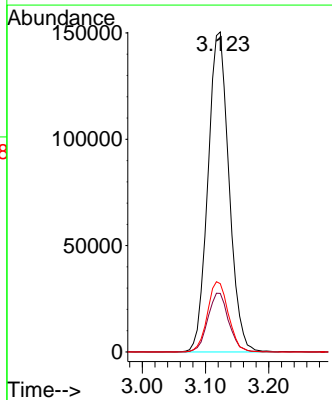
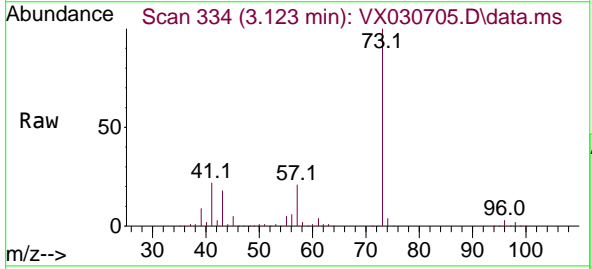
Ion	Ratio	Lower	Upper
96	100		
61	132.9	103.7	192.5
98	61.5	41.5	77.1

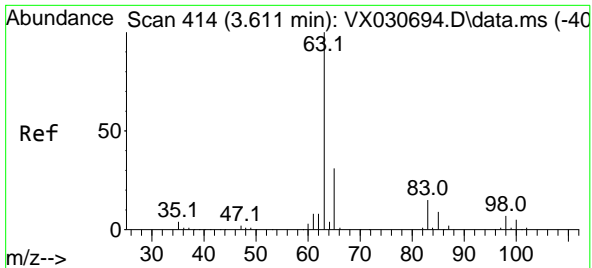


#18
 Methyl tert-butyl Ether
 Concen: 53.689 ug/L
 RT: 3.123 min Scan# 334
 Delta R.T. 0.006 min
 Lab File: VX030705.D
 Acq: 19 Aug 2022 16:12

Tgt Ion: 73 Resp: 348051

Ion	Ratio	Lower	Upper
73	100		
43	18.3	17.6	26.4
57	21.8	17.5	26.3



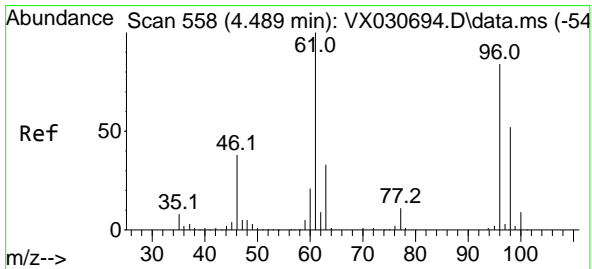
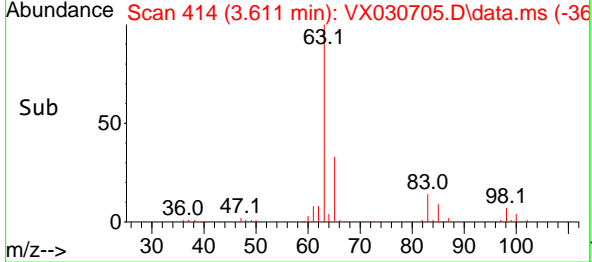
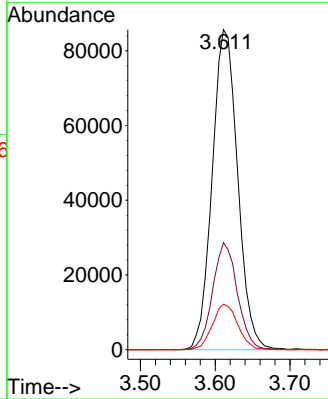
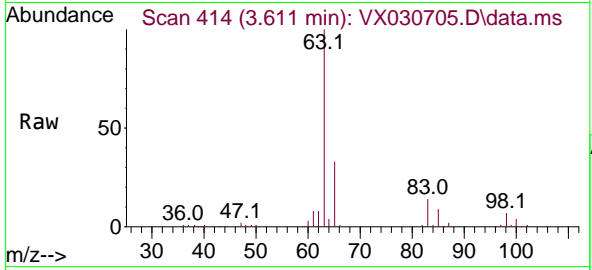


#19
 1,1-Dichloroethane
 Concen: 55.100 ug/L
 RT: 3.611 min Scan# 411
 Delta R.T. 0.000 min
 Lab File: VX030705.D
 Acq: 19 Aug 2022 16:12

Instrument : MSVOA_X
 ClientSampleId : VSTD050792

Tgt Ion: 63 Resp: 203153

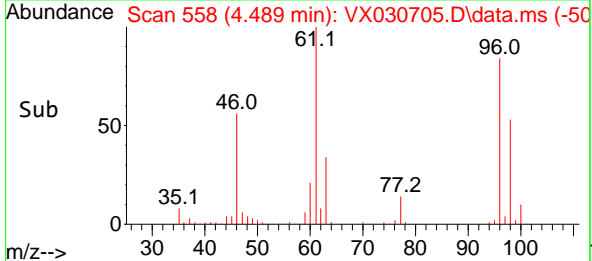
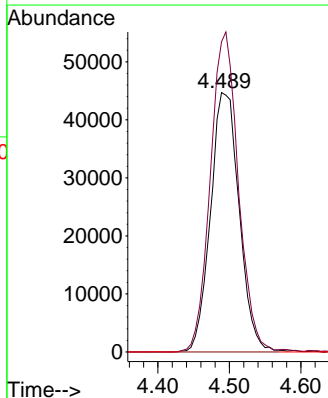
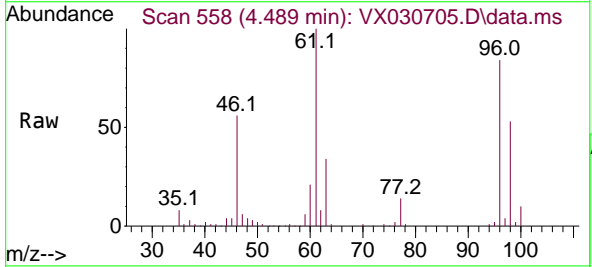
Ion	Ratio	Lower	Upper
63	100		
65	33.4	22.0	40.8
83	14.2	9.9	18.3

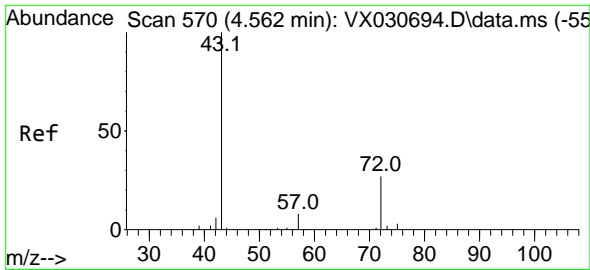


#20
 cis-1,2-Dichloroethene
 Concen: 58.065 ug/L
 RT: 4.489 min Scan# 558
 Delta R.T. -0.000 min
 Lab File: VX030705.D
 Acq: 19 Aug 2022 16:12

Tgt Ion: 96 Resp: 124516

Ion	Ratio	Lower	Upper
96	100		
61	119.6	94.0	174.6
68	0.0	0.0	0.0

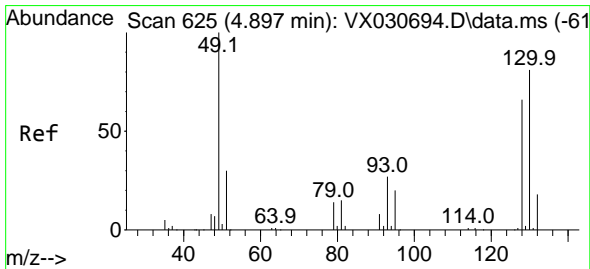
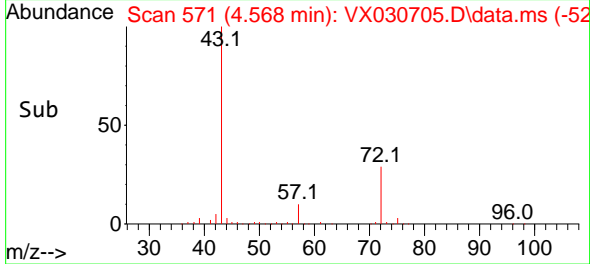
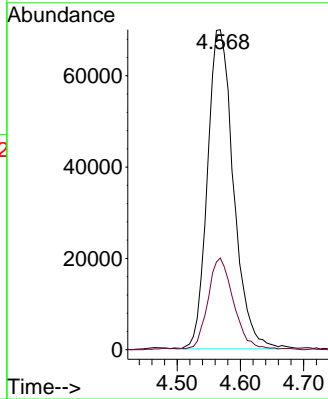
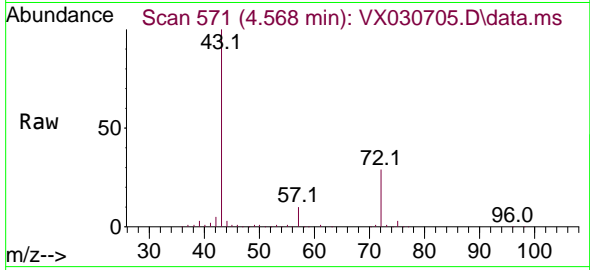




#22
 2-Butanone
 Concen: 98.788 ug/L
 RT: 4.568 min Scan# 51
 Delta R.T. 0.006 min
 Lab File: VX030705.D
 Acq: 19 Aug 2022 16:12

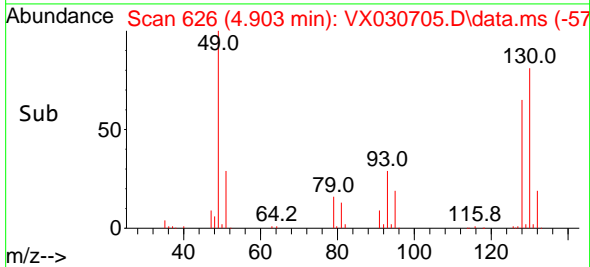
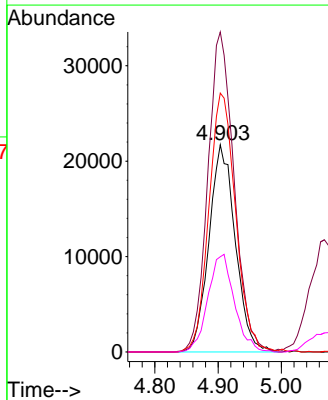
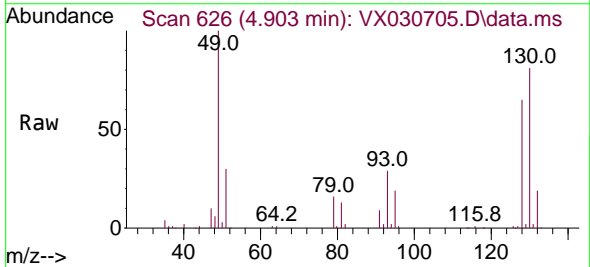
Instrument : MSVOA_X
 ClientSampleId : VSTD050792

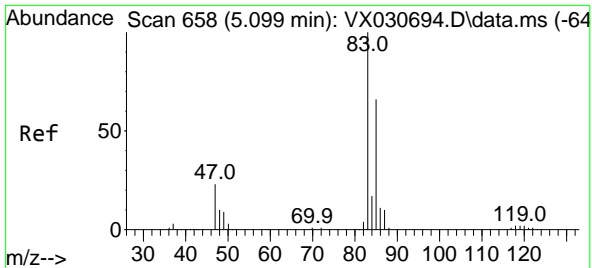
Tgt Ion: 43 Resp: 199790
 Ion Ratio Lower Upper
 43 100
 72 28.0 11.7 35.1



#23
 Bromochloromethane
 Concen: 58.297 ug/L
 RT: 4.903 min Scan# 626
 Delta R.T. 0.006 min
 Lab File: VX030705.D
 Acq: 19 Aug 2022 16:12

Tgt Ion:128 Resp: 62691
 Ion Ratio Lower Upper
 128 100
 49 154.4 116.8 216.8
 130 125.0 90.3 167.7
 51 46.0 40.0 60.0

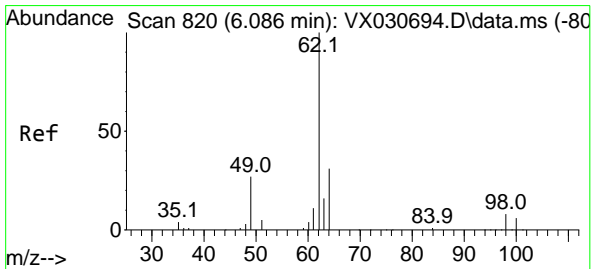
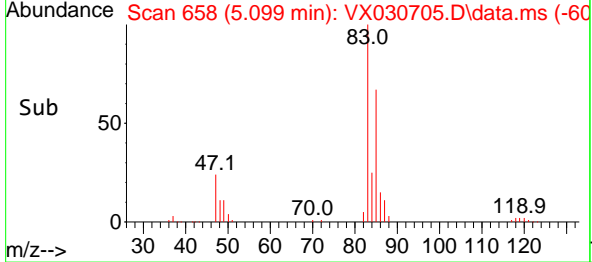
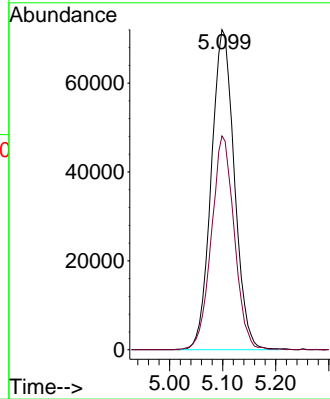
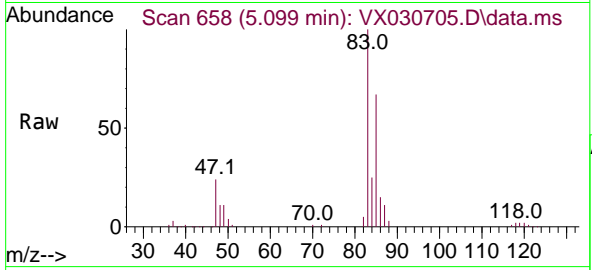




#25
 Chloroform
 Concen: 56.175 ug/L
 RT: 5.099 min Scan# 61
 Delta R.T. 0.000 min
 Lab File: VX030705.D
 Acq: 19 Aug 2022 16:12

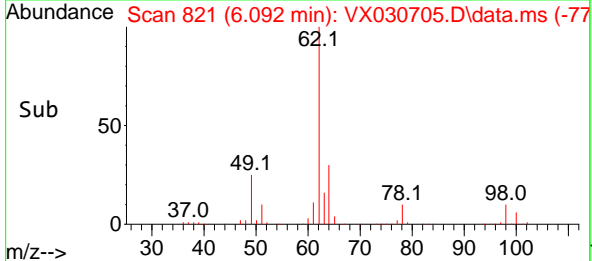
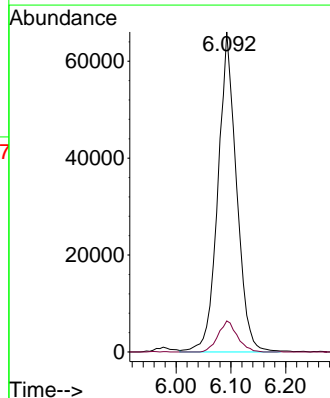
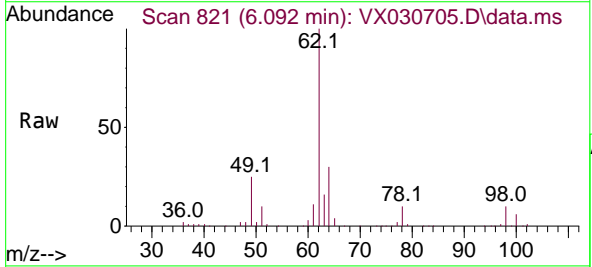
Instrument :
 MSVOA_X
 ClientSampleId :
 VSTD050792

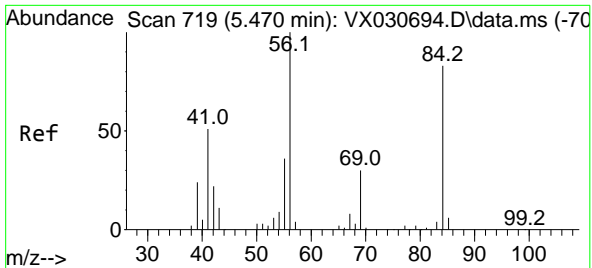
Tgt Ion: 83 Resp: 217614
 Ion Ratio Lower Upper
 83 100
 85 66.8 45.6 84.6



#27
 1,2-Dichloroethane
 Concen: 48.334 ug/L
 RT: 6.092 min Scan# 821
 Delta R.T. 0.006 min
 Lab File: VX030705.D
 Acq: 19 Aug 2022 16:12

Tgt Ion: 62 Resp: 155840
 Ion Ratio Lower Upper
 62 100
 98 9.7 7.0 10.6

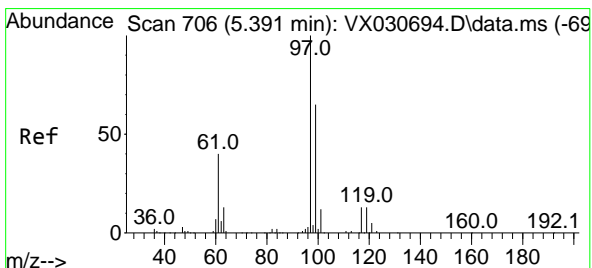
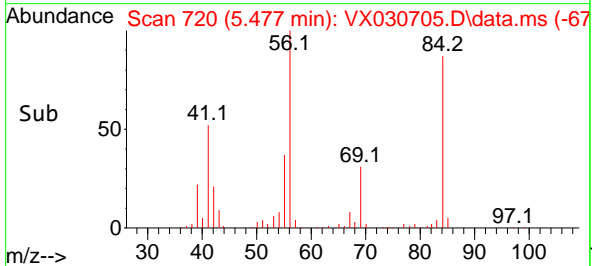
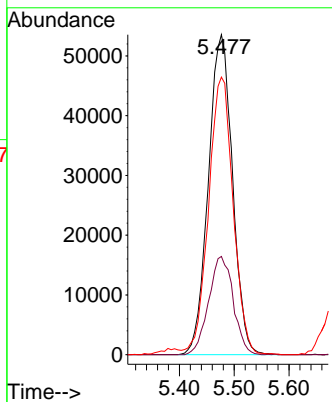
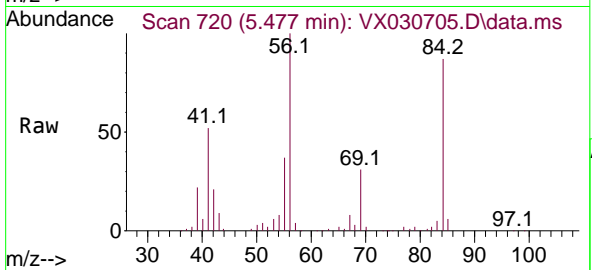




#29
 Cyclohexane
 Concen: 45.686 ug/L
 RT: 5.477 min Scan# 719
 Delta R.T. 0.006 min
 Lab File: VX030705.D
 Acq: 19 Aug 2022 16:12

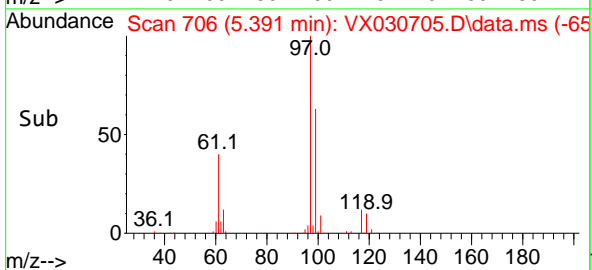
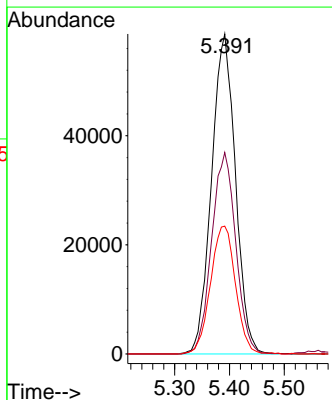
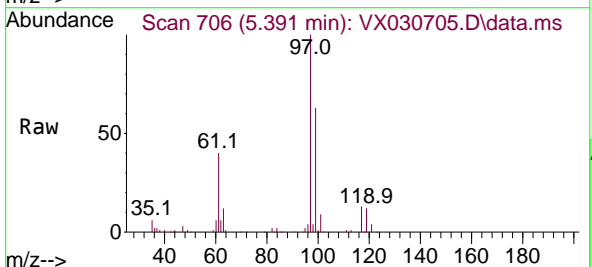
Instrument : MSVOA_X
 ClientSampleId : VSTD050792

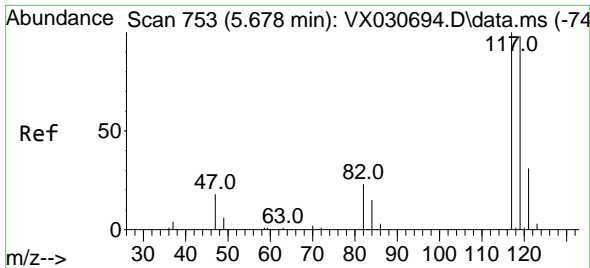
Tgt Ion: 56 Resp: 163936
 Ion Ratio Lower Upper
 56 100
 69 31.2 24.3 36.5
 84 88.1 66.7 100.1



#30
 1,1,1-Trichloroethane
 Concen: 49.999 ug/L
 RT: 5.391 min Scan# 706
 Delta R.T. 0.000 min
 Lab File: VX030705.D
 Acq: 19 Aug 2022 16:12

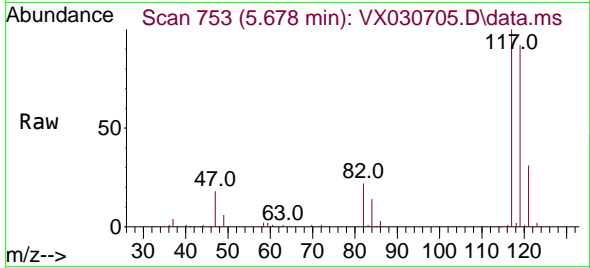
Tgt Ion: 97 Resp: 178017
 Ion Ratio Lower Upper
 97 100
 99 63.5 51.4 77.0
 61 41.7 37.0 55.6



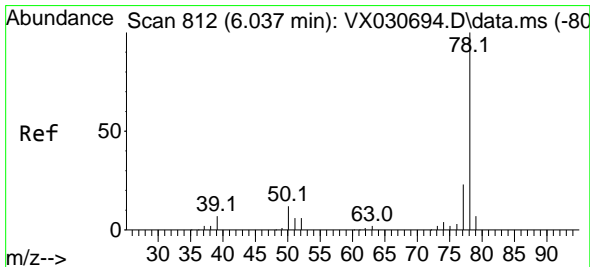
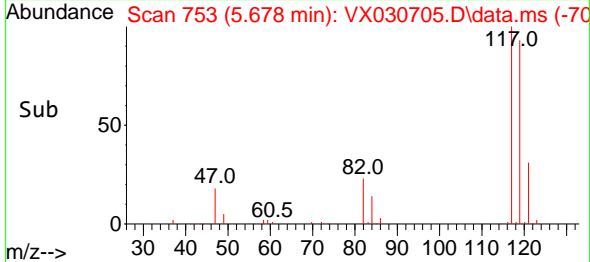
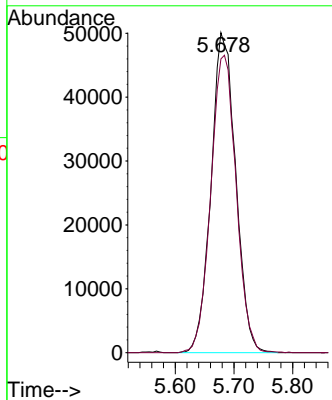


#31
 Carbon tetrachloride
 Concen: 49.684 ug/L
 RT: 5.678 min Scan# 71
 Delta R.T. 0.000 min
 Lab File: VX030705.D
 Acq: 19 Aug 2022 16:12

Instrument :
 MSVOA_X
 ClientSampleId :
 VSTD050792

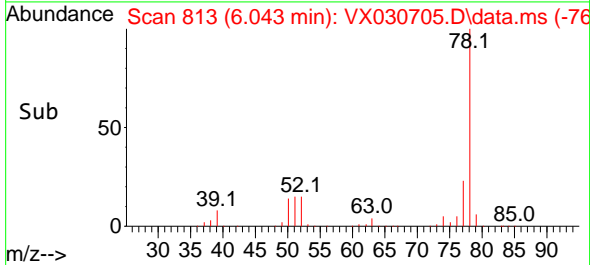
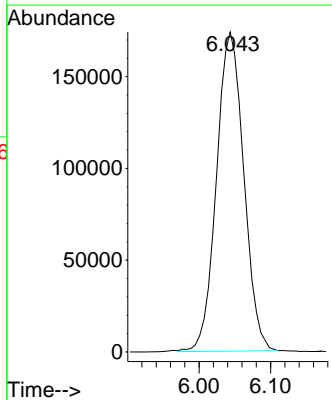
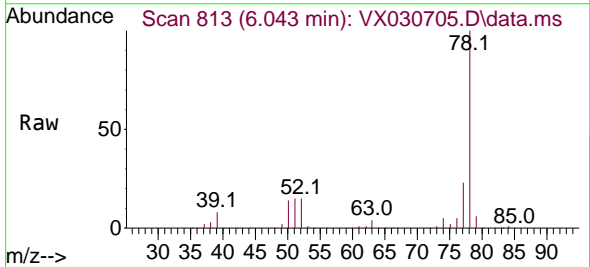


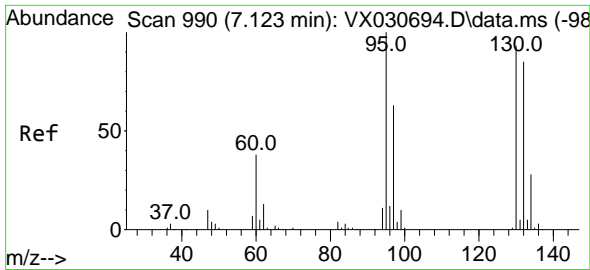
Tgt Ion:117 Resp: 146000
 Ion Ratio Lower Upper
 117 100
 119 95.6 76.2 114.2



#33
 Benzene
 Concen: 53.166 ug/L
 RT: 6.043 min Scan# 813
 Delta R.T. 0.006 min
 Lab File: VX030705.D
 Acq: 19 Aug 2022 16:12

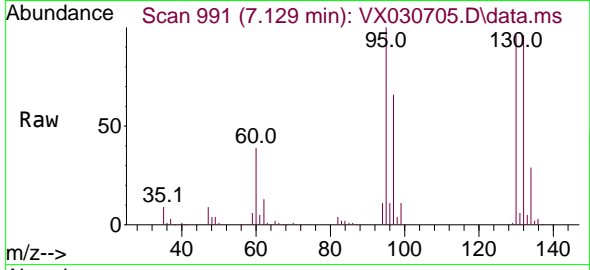
Tgt Ion: 78 Resp: 460101



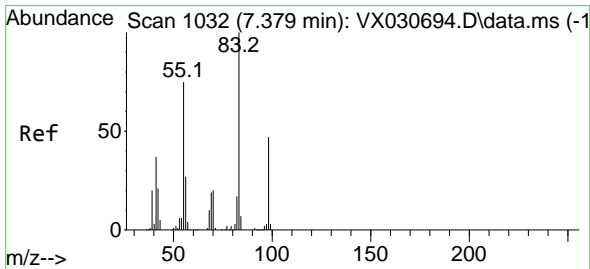
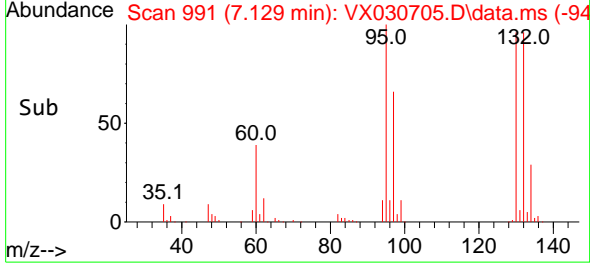
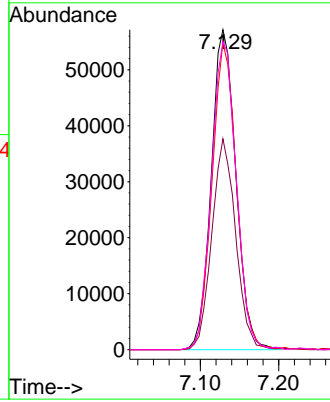


#34
 Trichloroethene
 Concen: 49.844 ug/L
 RT: 7.129 min Scan# 990
 Delta R.T. 0.006 min
 Lab File: VX030705.D
 Acq: 19 Aug 2022 16:12

Instrument : MSVOA_X
 ClientSampleId : VSTD050792

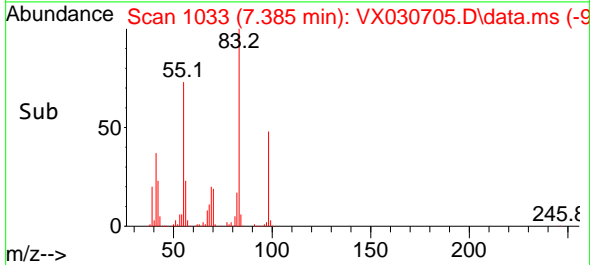
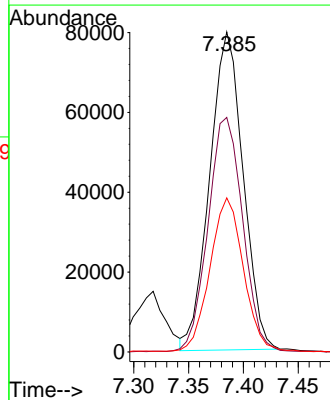
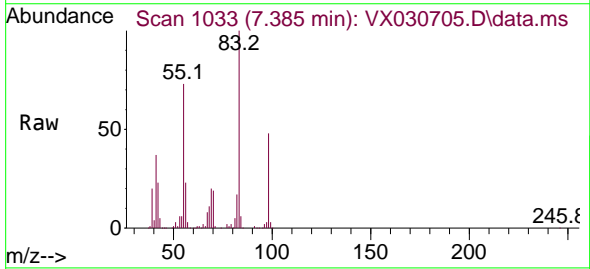


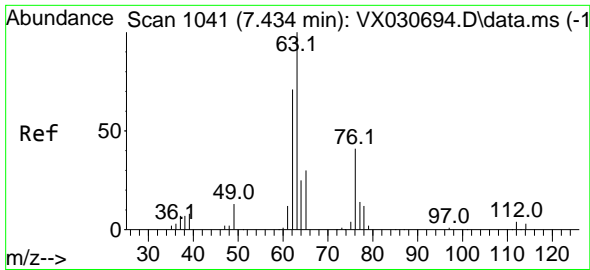
Tgt Ion: 95 Resp: 124932
 Ion Ratio Lower Upper
 95 100
 97 65.9 40.2 74.6
 132 96.0 55.3 102.7
 130 96.3 58.9 109.5



#35
 Methylcyclohexane
 Concen: 46.228 ug/L
 RT: 7.385 min Scan# 1033
 Delta R.T. 0.006 min
 Lab File: VX030705.D
 Acq: 19 Aug 2022 16:12

Tgt Ion: 83 Resp: 168681
 Ion Ratio Lower Upper
 83 100
 55 76.8 64.0 96.0
 98 49.1 36.7 55.1

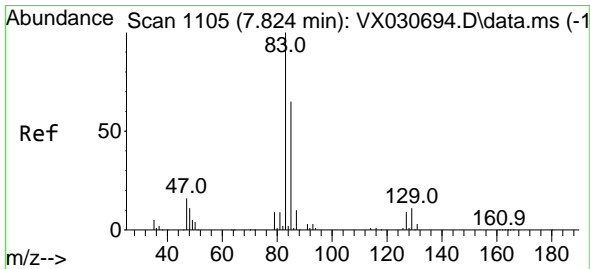
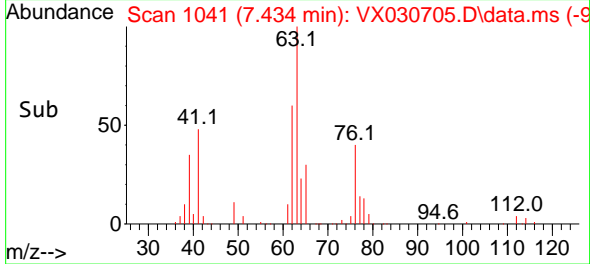
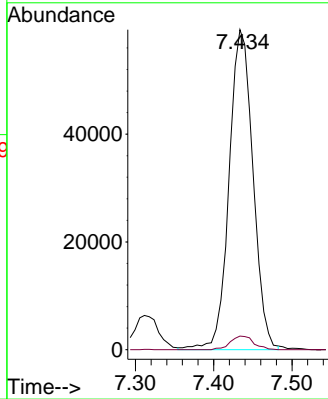
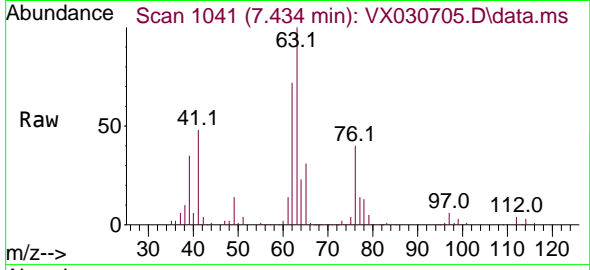




#37
 1,2-Dichloropropane
 Concen: 54.701 ug/L
 RT: 7.434 min Scan# 1041
 Delta R.T. 0.000 min
 Lab File: VX030705.D
 Acq: 19 Aug 2022 16:12

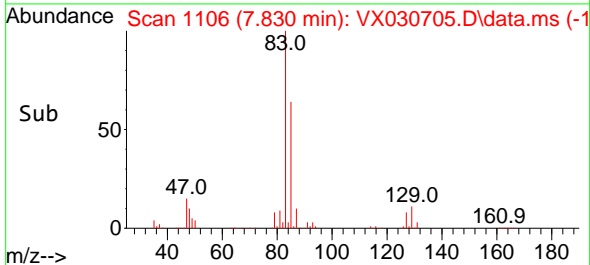
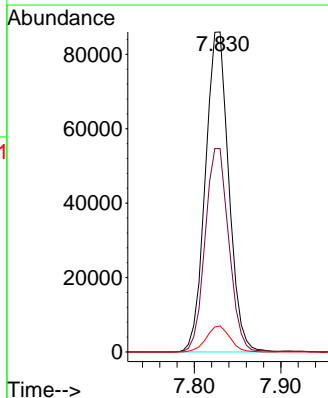
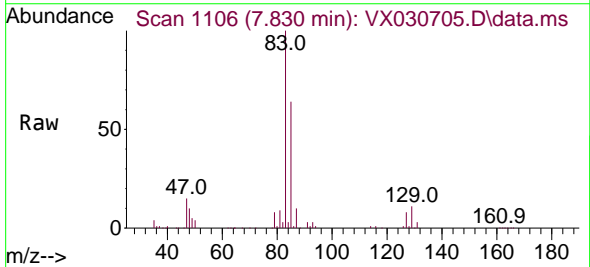
Instrument : MSVOA_X
 ClientSampleId : VSTD050792

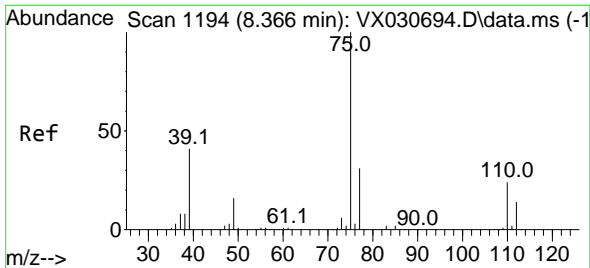
Tgt Ion: 63 Resp: 125867
 Ion Ratio Lower Upper
 63 100
 112 4.1 3.0 4.4



#38
 Bromodichloromethane
 Concen: 53.120 ug/L
 RT: 7.830 min Scan# 1106
 Delta R.T. 0.006 min
 Lab File: VX030705.D
 Acq: 19 Aug 2022 16:12

Tgt Ion: 83 Resp: 161767
 Ion Ratio Lower Upper
 83 100
 85 63.6 42.5 78.9
 127 8.2 6.2 9.2

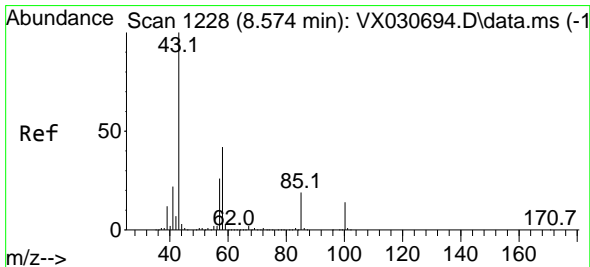
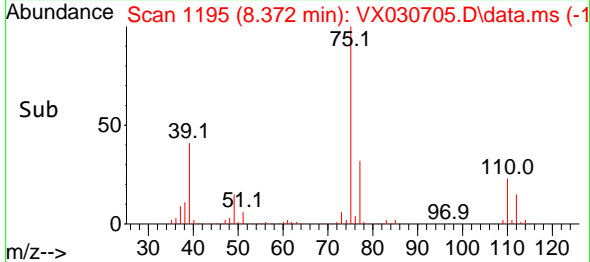
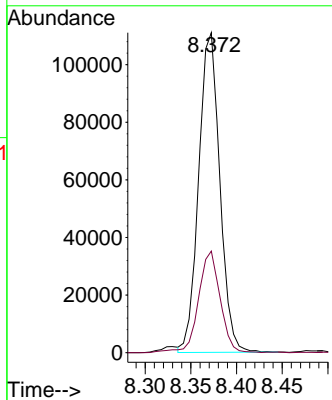
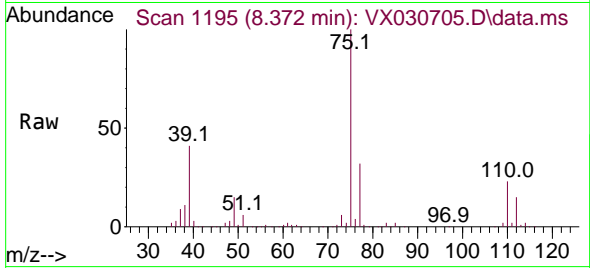




#39
 cis-1,3-Dichloropropene
 Concen: 51.936 ug/L
 RT: 8.372 min Scan# 1195
 Delta R.T. 0.006 min
 Lab File: VX030705.D
 Acq: 19 Aug 2022 16:12

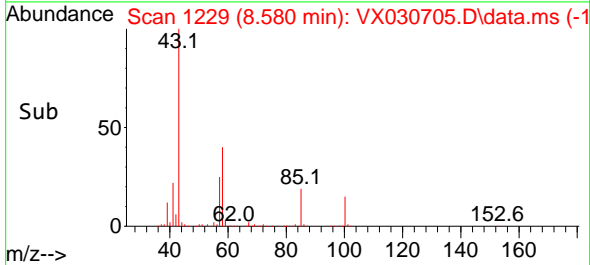
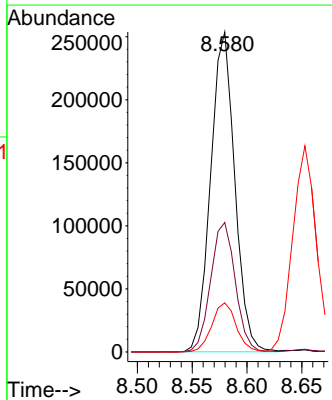
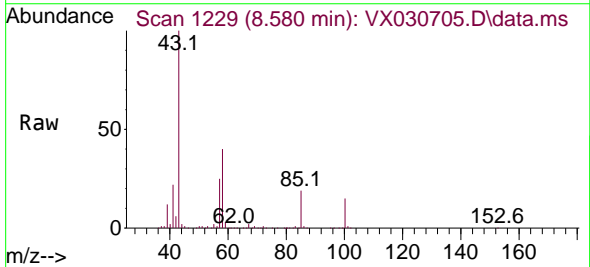
Instrument : MSVOA_X
 ClientSampleId : VSTD050792

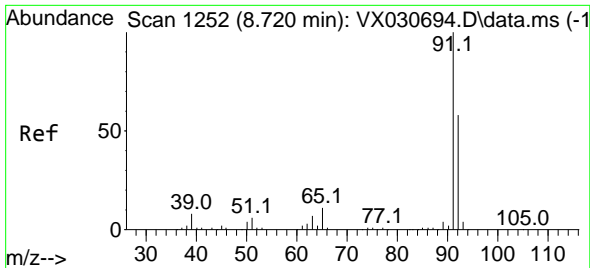
Tgt Ion: 75 Resp: 178272
 Ion Ratio Lower Upper
 75 100
 77 31.7 22.4 41.6



#40
 4-Methyl-2-pentanone
 Concen: 96.832 ug/L
 RT: 8.580 min Scan# 1229
 Delta R.T. 0.006 min
 Lab File: VX030705.D
 Acq: 19 Aug 2022 16:12

Tgt Ion: 43 Resp: 388011
 Ion Ratio Lower Upper
 43 100
 58 41.4 29.0 43.6
 100 15.6 10.5 15.7

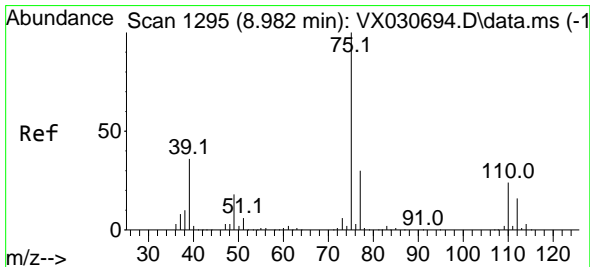
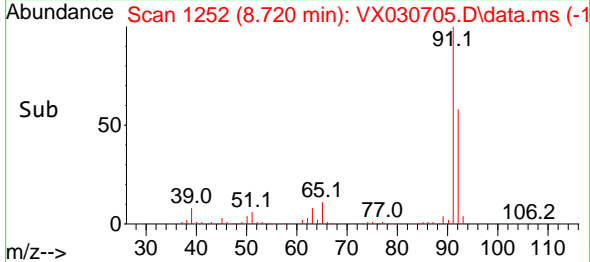
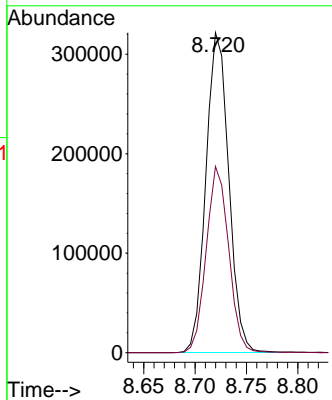
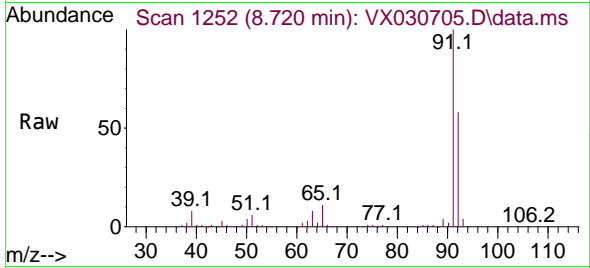




#42
 Toluene
 Concen: 54.311 ug/L
 RT: 8.720 min Scan# 11
 Delta R.T. 0.000 min
 Lab File: VX030705.D
 Acq: 19 Aug 2022 16:12

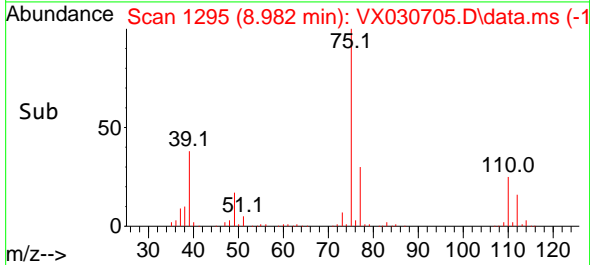
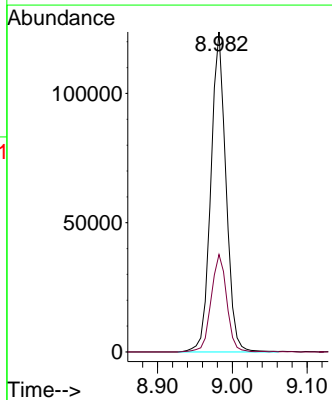
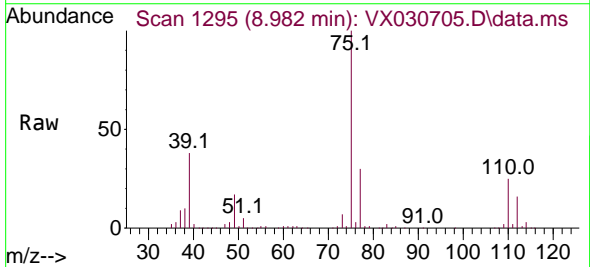
Instrument :
 MSVOA_X
 ClientSampleId :
 VSTD050792

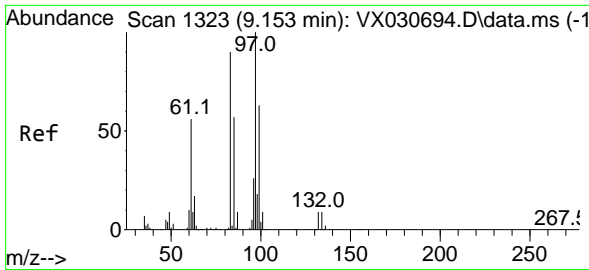
Tgt Ion: 91 Resp: 496520
 Ion Ratio Lower Upper
 91 100
 92 58.2 40.0 74.4



#44
 trans-1,3-Dichloropropene
 Concen: 51.882 ug/L
 RT: 8.982 min Scan# 1295
 Delta R.T. 0.000 min
 Lab File: VX030705.D
 Acq: 19 Aug 2022 16:12

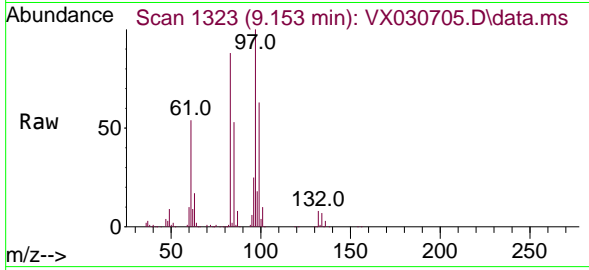
Tgt Ion: 75 Resp: 174305
 Ion Ratio Lower Upper
 75 100
 77 30.5 22.5 41.7



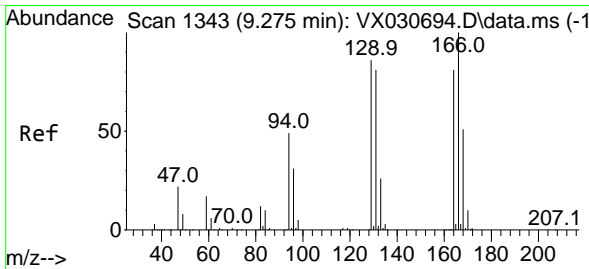
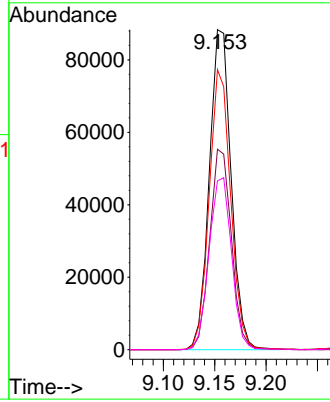
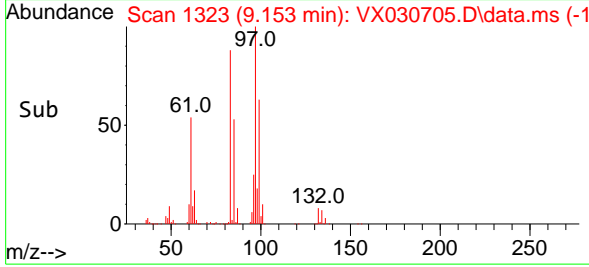


#45
 1,1,2-Trichloroethane
 Concen: 61.054 ug/L
 RT: 9.153 min Scan# 1323
 Delta R.T. 0.000 min
 Lab File: VX030705.D
 Acq: 19 Aug 2022 16:12

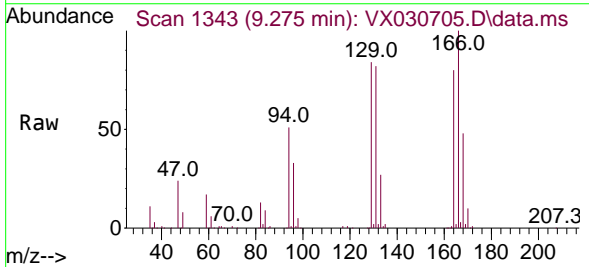
Instrument : MSVOA_X
 ClientSampleId : VSTD050792



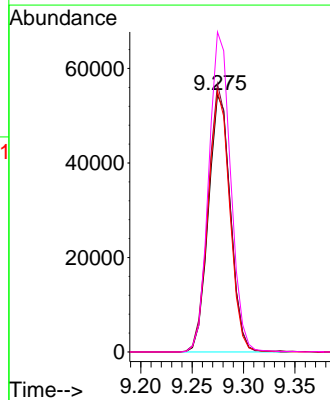
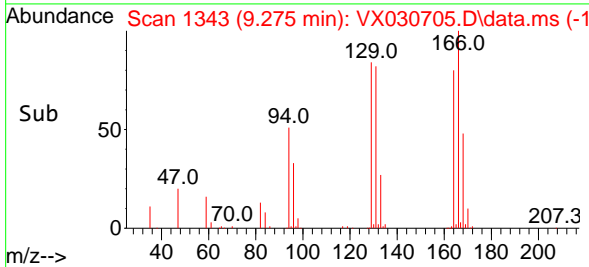
Tgt Ion: 97 Resp: 130632
 Ion Ratio Lower Upper
 97 100
 99 62.6 43.3 80.3
 83 87.5 63.0 117.0
 85 52.8 40.1 74.5

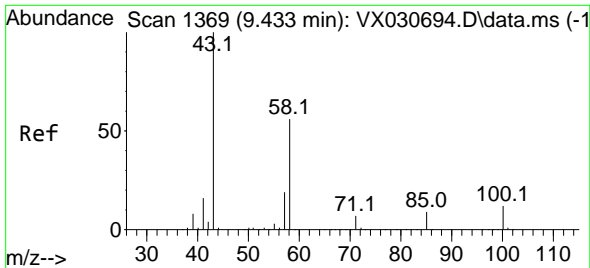


#46
 Tetrachloroethene
 Concen: 51.088 ug/L
 RT: 9.275 min Scan# 1343
 Delta R.T. 0.000 min
 Lab File: VX030705.D
 Acq: 19 Aug 2022 16:12



Tgt Ion:164 Resp: 80927
 Ion Ratio Lower Upper
 164 100
 129 104.4 72.7 135.1
 131 101.7 69.9 129.9
 166 124.6 88.3 164.1



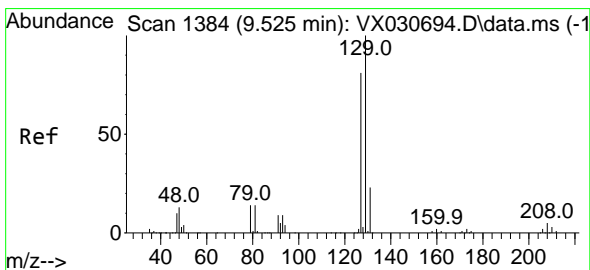
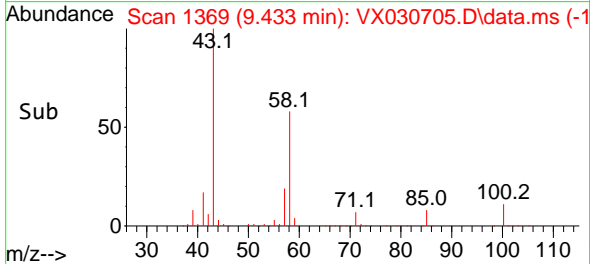
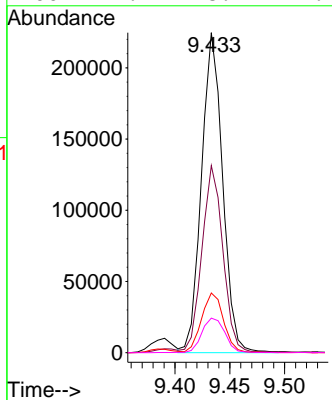
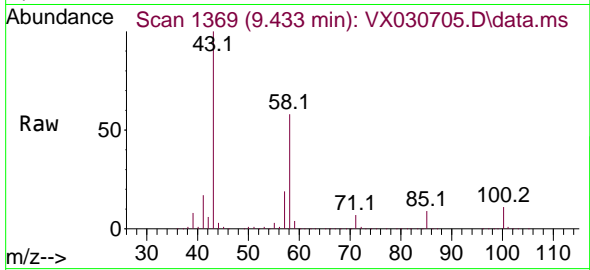


#48
 2-Hexanone
 Concen: 96.869 ug/L
 RT: 9.433 min Scan# 1369
 Delta R.T. -0.000 min
 Lab File: VX030705.D
 Acq: 19 Aug 2022 16:12

Instrument : MSVOA_X
 ClientSampleId : VSTD050792

Tgt Ion: 43 Resp: 301590

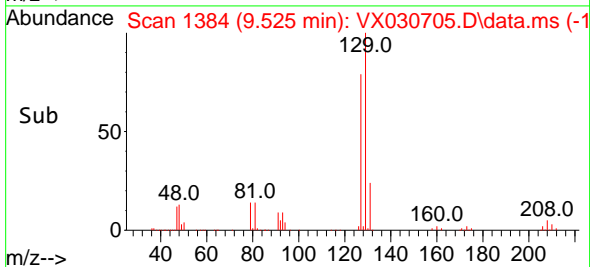
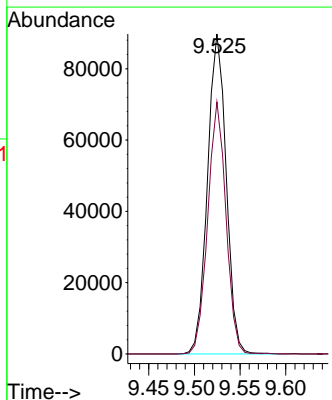
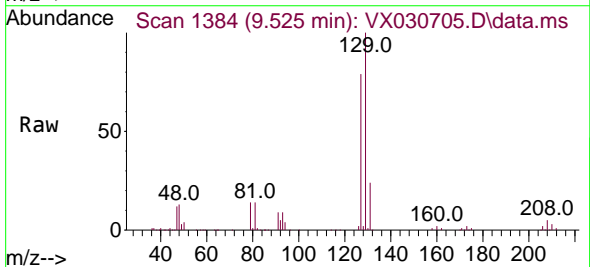
Ion	Ratio	Lower	Upper
43	100		
58	57.3	40.4	60.6
57	19.5	14.6	22.0
100	11.7	8.2	12.4

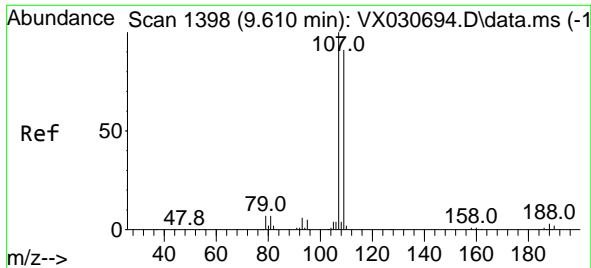


#49
 Dibromochloromethane
 Concen: 56.006 ug/L
 RT: 9.525 min Scan# 1384
 Delta R.T. 0.000 min
 Lab File: VX030705.D
 Acq: 19 Aug 2022 16:12

Tgt Ion: 129 Resp: 127486

Ion	Ratio	Lower	Upper
129	100		
127	78.8	55.6	103.2



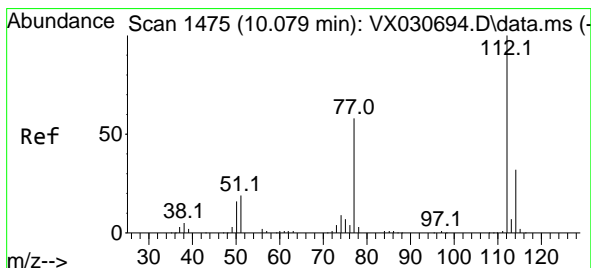
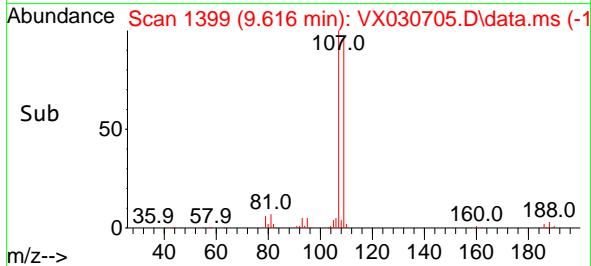
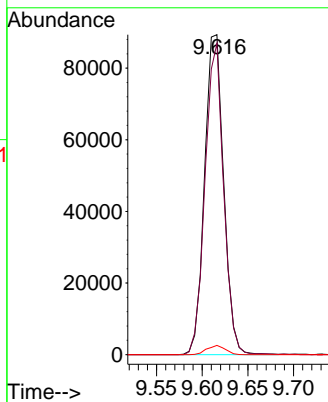
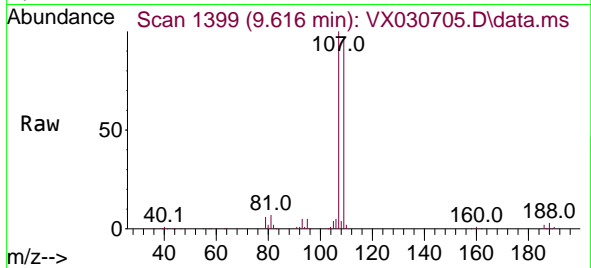


#50
 1,2-Dibromoethane
 Concen: 55.331 ug/L
 RT: 9.616 min Scan# 11
 Delta R.T. 0.006 min
 Lab File: VX030705.D
 Acq: 19 Aug 2022 16:12

Instrument :
 MSVOA_X
 ClientSampleId :
 VSTD050792

Tgt Ion:107 Resp: 130190

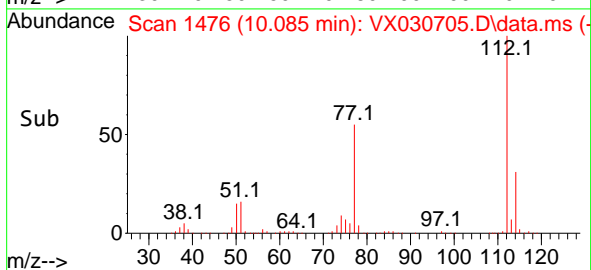
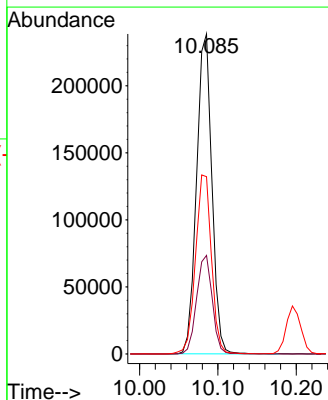
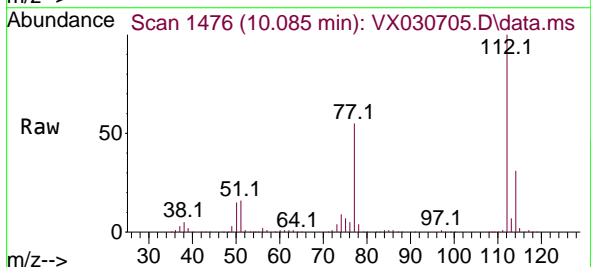
Ion	Ratio	Lower	Upper
107	100		
109	97.3	64.8	120.4
188	2.9	2.2	3.2

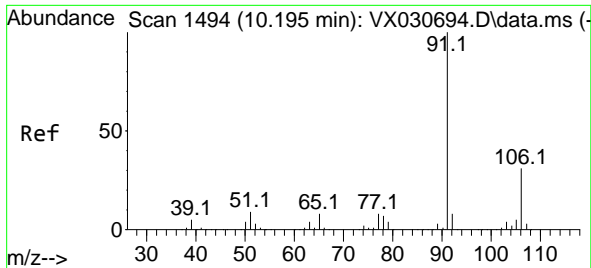


#51
 Chlorobenzene
 Concen: 56.930 ug/L
 RT: 10.085 min Scan# 1476
 Delta R.T. 0.006 min
 Lab File: VX030705.D
 Acq: 19 Aug 2022 16:12

Tgt Ion:112 Resp: 324254

Ion	Ratio	Lower	Upper
112	100		
114	30.8	22.3	41.5
77	55.4	50.8	76.2

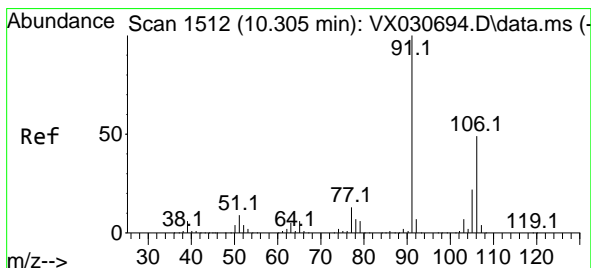
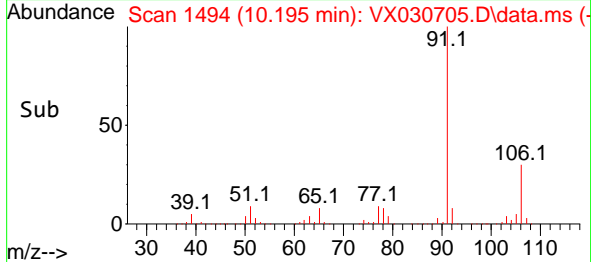
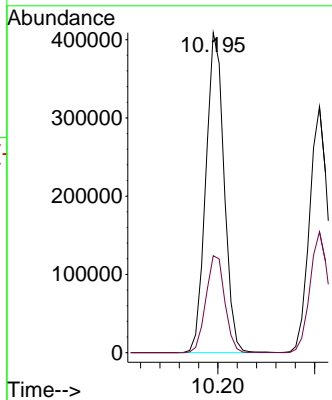
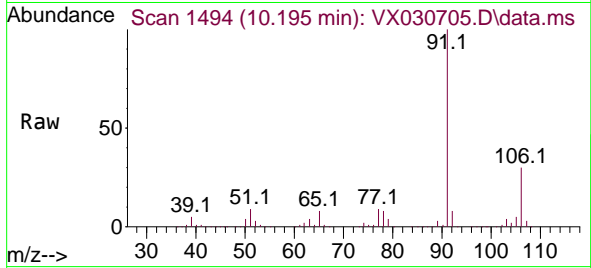




#52
 Ethylbenzene
 Concen: 53.853 ug/L
 RT: 10.195 min Scan# 1494
 Delta R.T. 0.000 min
 Lab File: VX030705.D
 Acq: 19 Aug 2022 16:12

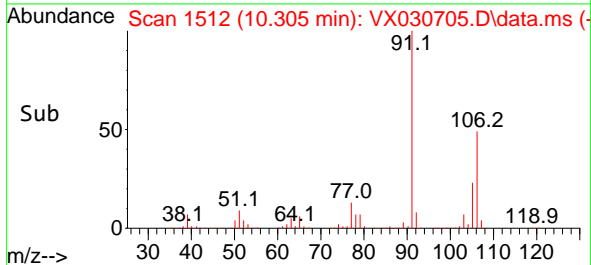
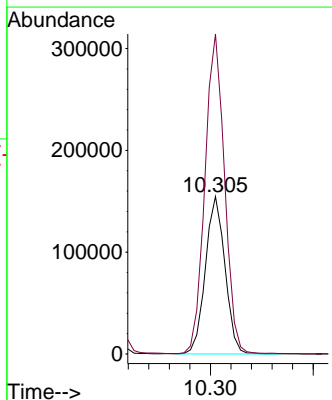
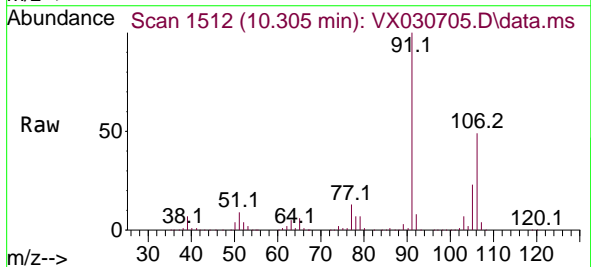
Instrument : MSVOA_X
 ClientSampleId : VSTD050792

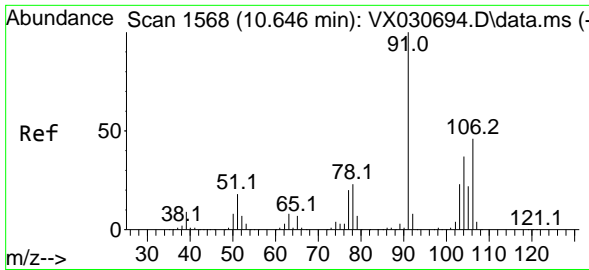
Tgt Ion: 91 Resp: 536828
 Ion Ratio Lower Upper
 91 100
 106 30.3 21.3 39.5



#53
 m,p-Xylene
 Concen: 55.121 ug/L
 RT: 10.305 min Scan# 1512
 Delta R.T. 0.000 min
 Lab File: VX030705.D
 Acq: 19 Aug 2022 16:12

Tgt Ion: 106 Resp: 204799
 Ion Ratio Lower Upper
 106 100
 91 203.3 147.8 274.6

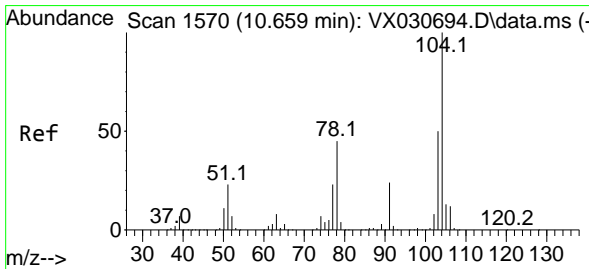
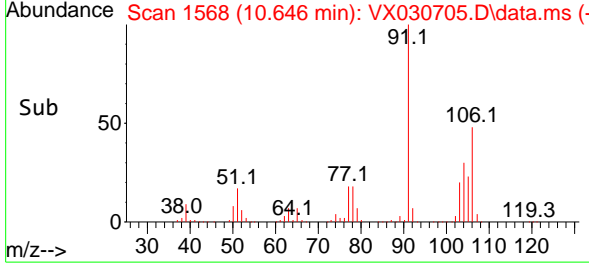
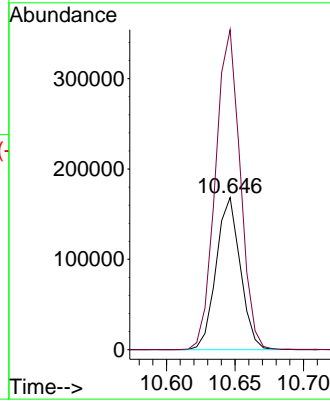
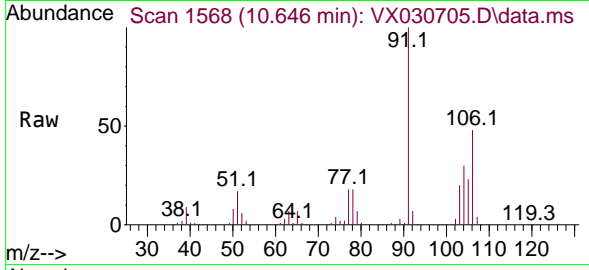




#54
 o-Xylene
 Concen: 55.797 ug/L
 RT: 10.646 min Scan# 1568
 Delta R.T. 0.000 min
 Lab File: VX030705.D
 Acq: 19 Aug 2022 16:12

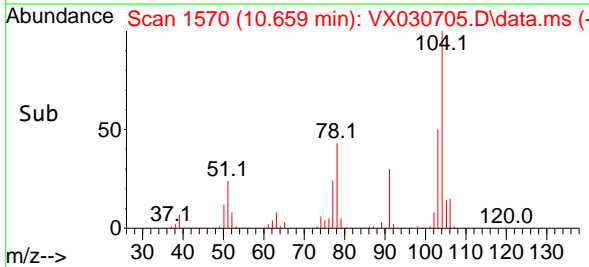
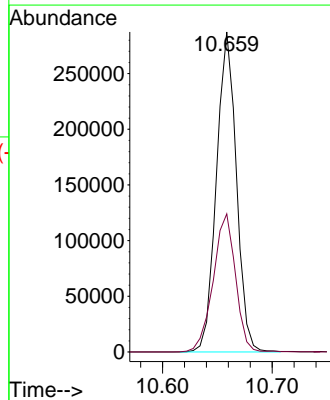
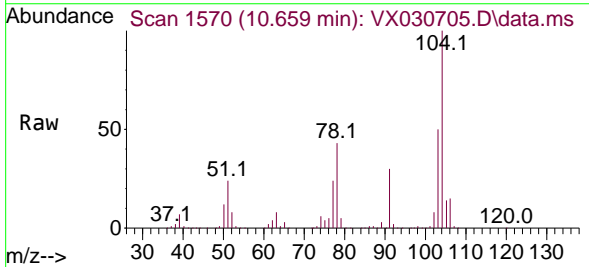
Instrument : MSVOA_X
 ClientSampleId : VSTD050792

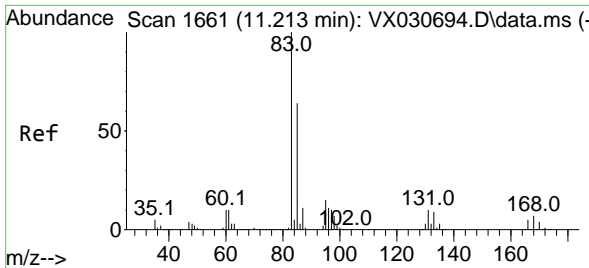
Tgt Ion:106 Resp: 206582
 Ion Ratio Lower Upper
 106 100
 91 210.3 157.8 293.0



#55
 Styrene
 Concen: 58.308 ug/L
 RT: 10.659 min Scan# 1570
 Delta R.T. 0.000 min
 Lab File: VX030705.D
 Acq: 19 Aug 2022 16:12

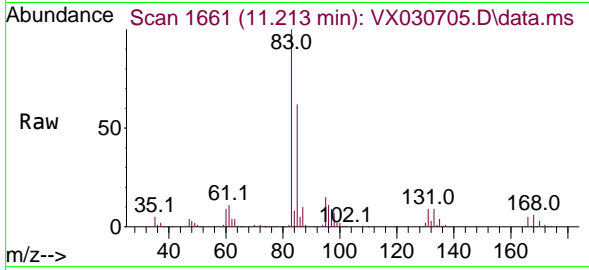
Tgt Ion:104 Resp: 363485
 Ion Ratio Lower Upper
 104 100
 78 43.2 33.2 61.7



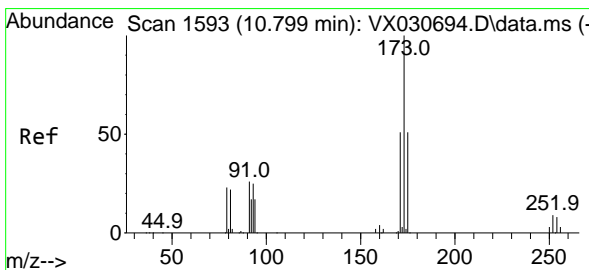
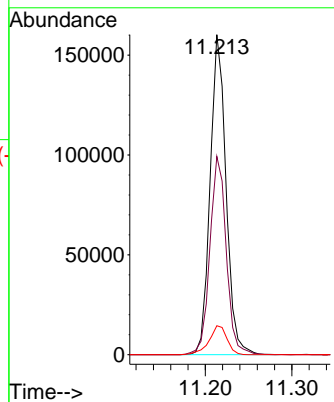
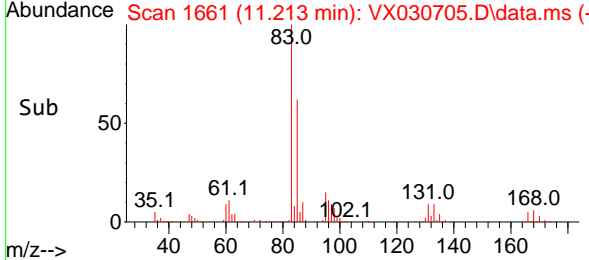


#57
 1,1,2-Tetrachloroethane
 Concen: 62.721 ug/L
 RT: 11.213 min Scan# 1661
 Delta R.T. -0.000 min
 Lab File: VX030705.D
 Acq: 19 Aug 2022 16:12

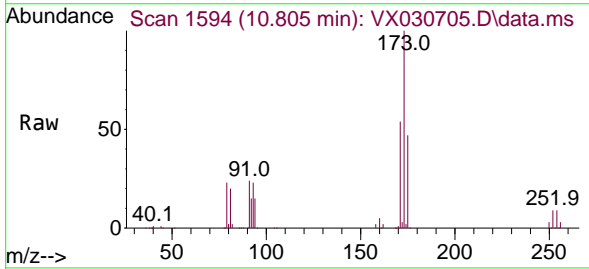
Instrument : MSVOA_X
 ClientSampleId : VSTD050792



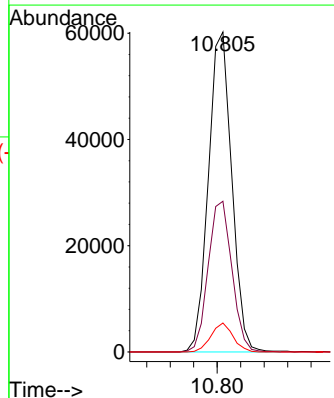
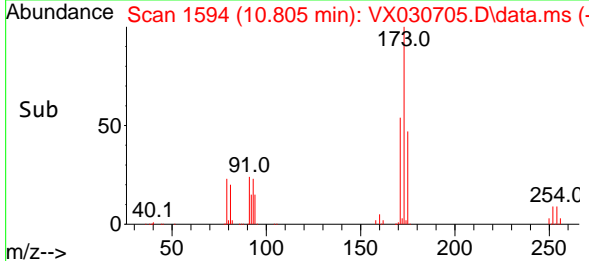
Tgt Ion: 83 Resp: 204191
 Ion Ratio Lower Upper
 83 100
 85 62.0 44.4 82.4
 131 9.1 7.5 11.3

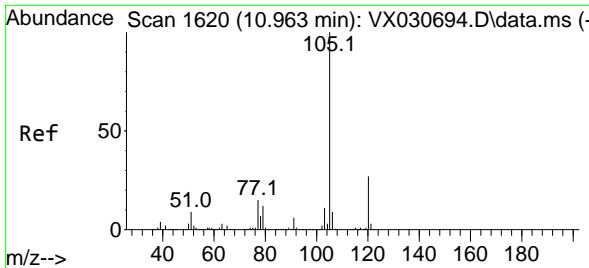


#59
 Bromoform
 Concen: 54.795 ug/L
 RT: 10.805 min Scan# 1594
 Delta R.T. 0.006 min
 Lab File: VX030705.D
 Acq: 19 Aug 2022 16:12



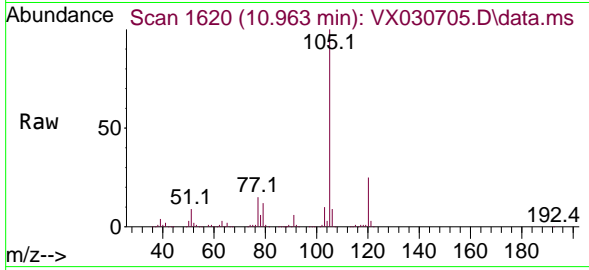
Tgt Ion: 173 Resp: 83184
 Ion Ratio Lower Upper
 173 100
 175 47.9 38.9 58.3
 254 8.5 7.0 10.4





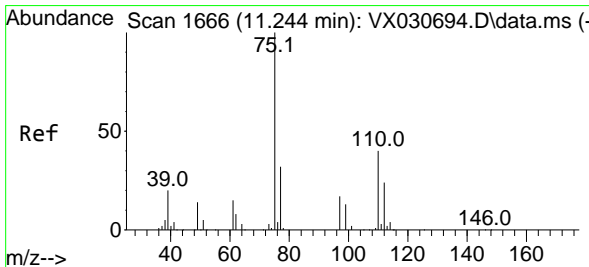
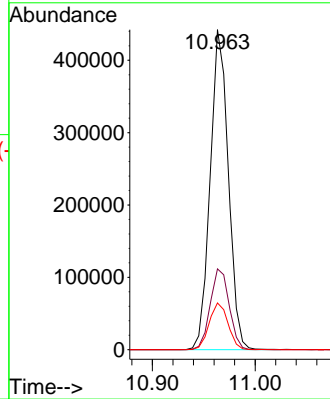
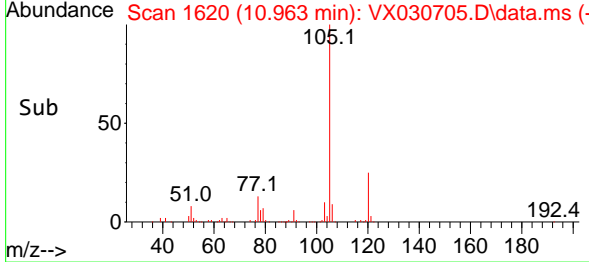
#60
 Isopropylbenzene
 Concen: 54.864 ug/L
 RT: 10.963 min Scan# 1620
 Delta R.T. 0.000 min
 Lab File: VX030705.D
 Acq: 19 Aug 2022 16:12

Instrument : MSVOA_X
 ClientSampleId : VSTD050792

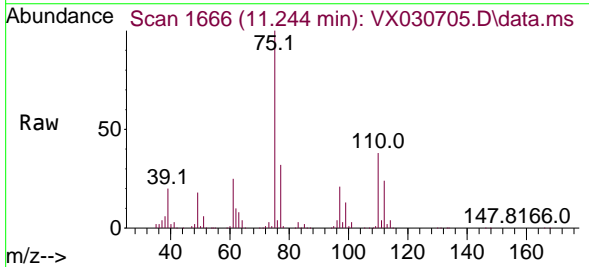


Tgt Ion:105 Resp: 542136

Ion	Ratio	Lower	Upper
105	100		
120	26.3	20.6	31.0
77	15.2	13.5	20.3

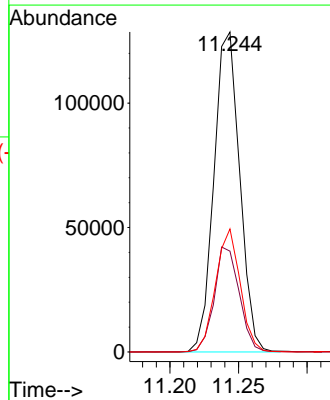
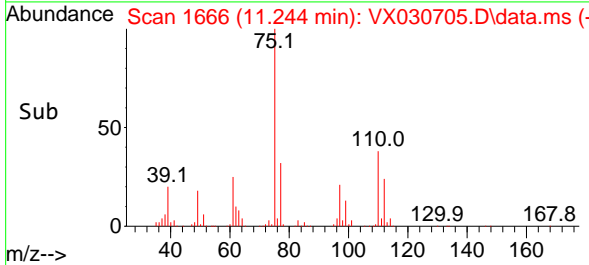


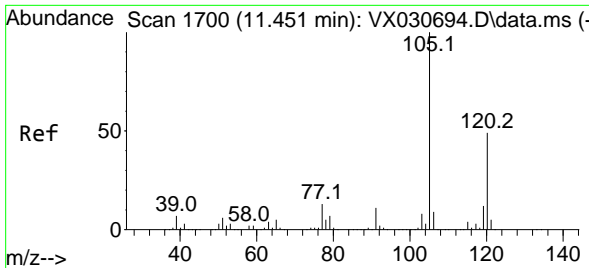
#61
 1,2,3-Trichloropropane
 Concen: 56.197 ug/L
 RT: 11.244 min Scan# 1666
 Delta R.T. -0.000 min
 Lab File: VX030705.D
 Acq: 19 Aug 2022 16:12



Tgt Ion: 75 Resp: 168244

Ion	Ratio	Lower	Upper
75	100		
77	32.0	26.1	39.1
110	36.7	30.5	45.7

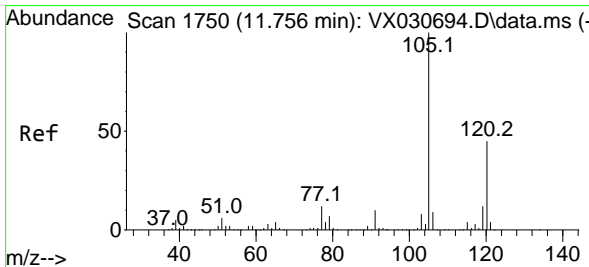
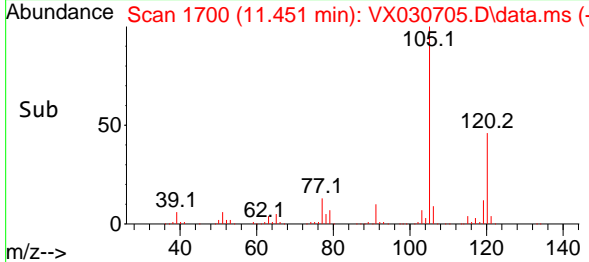
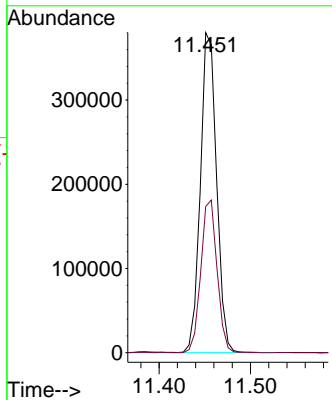
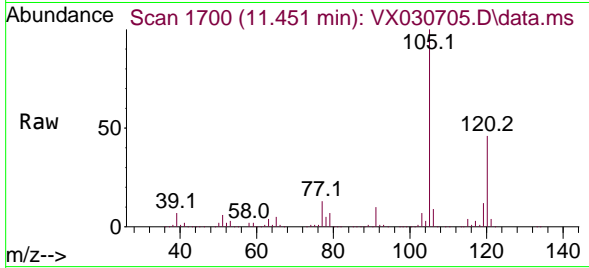




#62
 1,3,5-Trimethylbenzene
 Concen: 55.335 ug/L
 RT: 11.451 min Scan# 1700
 Delta R.T. 0.000 min
 Lab File: VX030705.D
 Acq: 19 Aug 2022 16:12

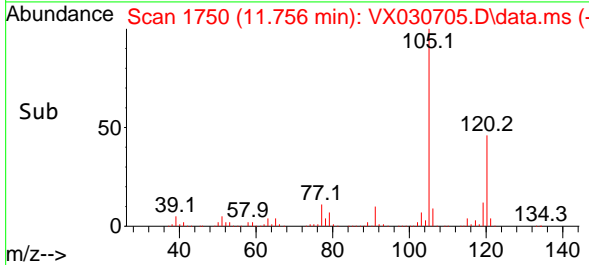
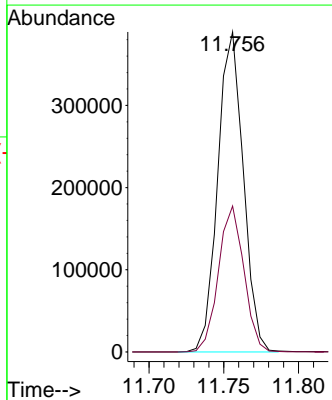
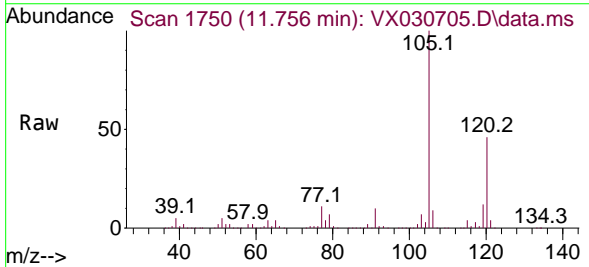
Instrument : MSVOA_X
 ClientSampleId : VSTD050792

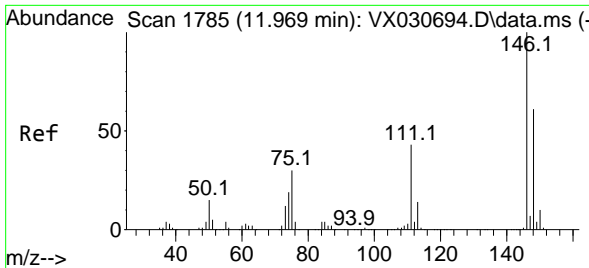
Tgt Ion:105 Resp: 466821
 Ion Ratio Lower Upper
 105 100
 120 47.8 37.2 55.8



#63
 1,2,4-Trimethylbenzene
 Concen: 54.313 ug/L
 RT: 11.756 min Scan# 1750
 Delta R.T. 0.000 min
 Lab File: VX030705.D
 Acq: 19 Aug 2022 16:12

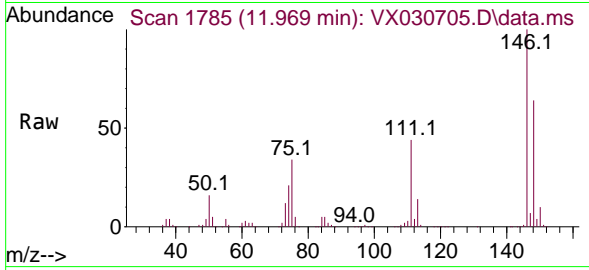
Tgt Ion:105 Resp: 462725
 Ion Ratio Lower Upper
 105 100
 120 45.4 35.9 53.9



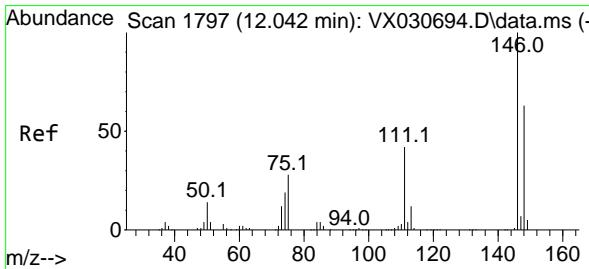
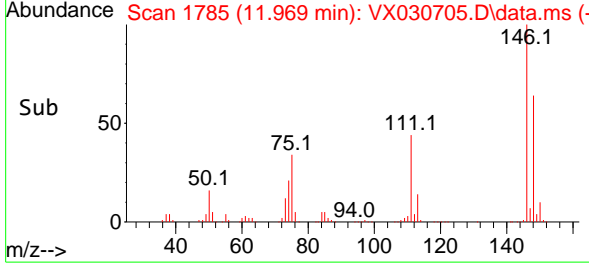
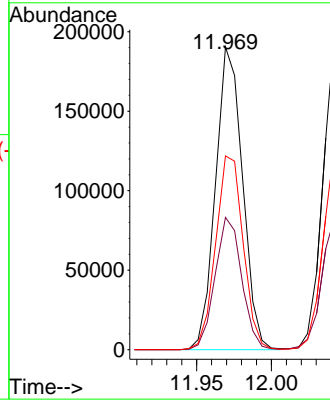


#64
 1,3-Dichlorobenzene
 Concen: 55.697 ug/L
 RT: 11.969 min Scan# 1785
 Delta R.T. 0.000 min
 Lab File: VX030705.D
 Acq: 19 Aug 2022 16:12

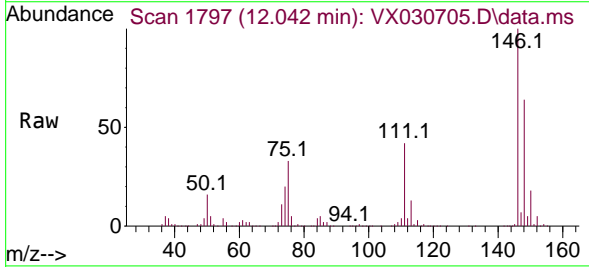
Instrument :
 MSVOA_X
 ClientSampleId :
 VSTD050792



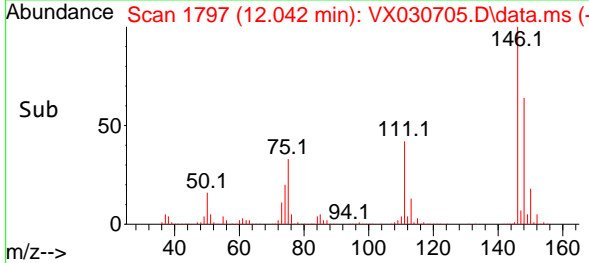
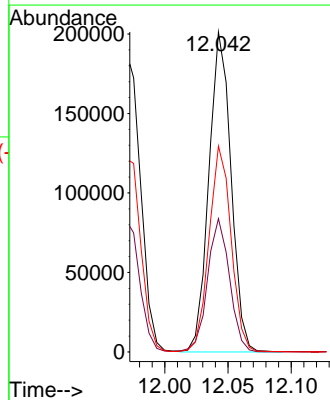
Tgt Ion:146 Resp: 239248
 Ion Ratio Lower Upper
 146 100
 111 43.7 30.9 57.5
 148 64.0 42.6 79.0

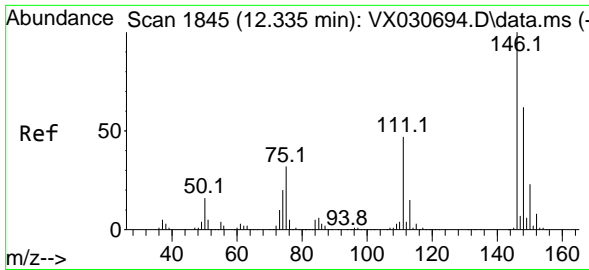


#65
 1,4-Dichlorobenzene
 Concen: 56.205 ug/L
 RT: 12.042 min Scan# 1797
 Delta R.T. 0.000 min
 Lab File: VX030705.D
 Acq: 19 Aug 2022 16:12



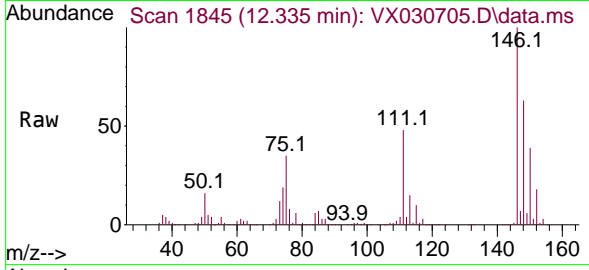
Tgt Ion:146 Resp: 245428
 Ion Ratio Lower Upper
 146 100
 111 41.7 32.6 60.6
 148 64.4 48.3 89.7



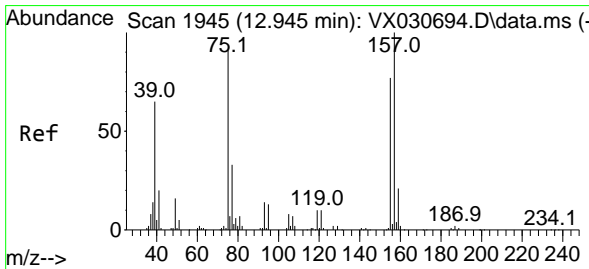
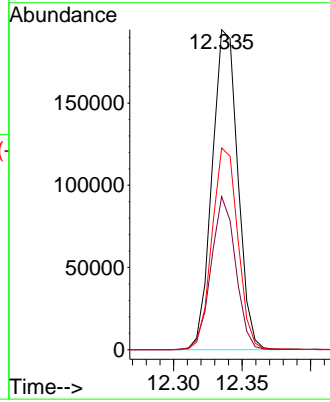
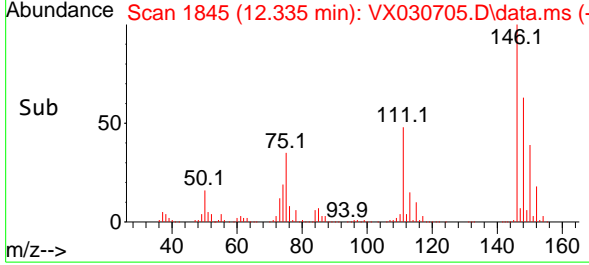


#67
 1,2-Dichlorobenzene
 Concen: 57.005 ug/L
 RT: 12.335 min Scan# 1845
 Delta R.T. -0.000 min
 Lab File: VX030705.D
 Acq: 19 Aug 2022 16:12

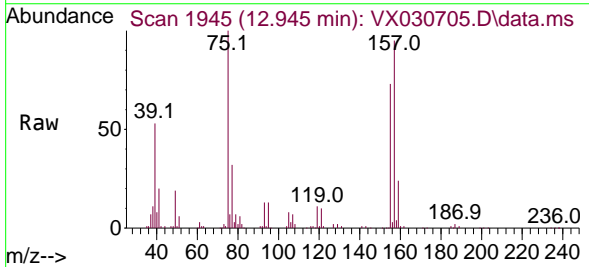
Instrument : MSVOA_X
 ClientSampleId : VSTD050792



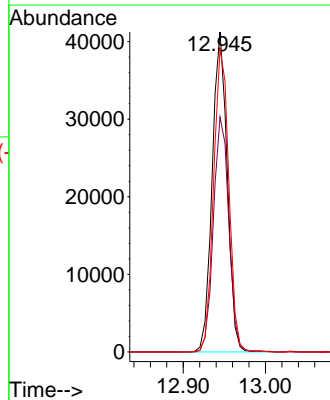
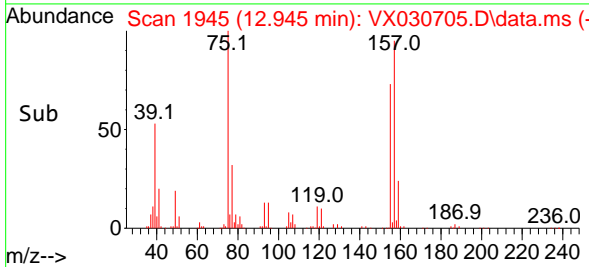
Tgt Ion:146 Resp: 253221
 Ion Ratio Lower Upper
 146 100
 111 47.8 36.9 55.3
 148 63.1 49.9 74.9

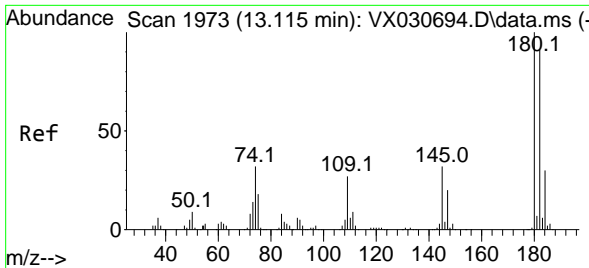


#68
 1,2-Dibromo-3-chloropropane
 Concen: 53.062 ug/L
 RT: 12.945 min Scan# 1945
 Delta R.T. -0.000 min
 Lab File: VX030705.D
 Acq: 19 Aug 2022 16:12



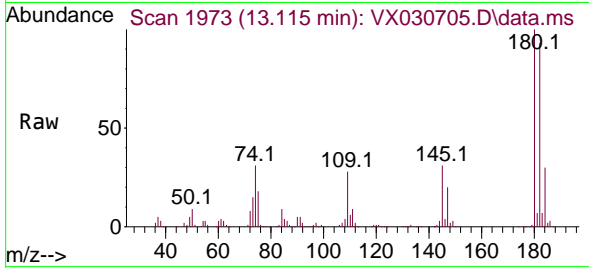
Tgt Ion: 75 Resp: 52402
 Ion Ratio Lower Upper
 75 100
 155 73.4 57.1 85.7
 157 94.8 73.1 109.7



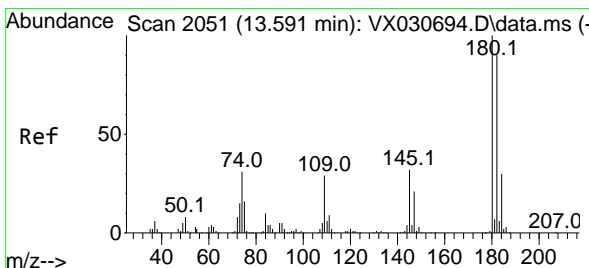
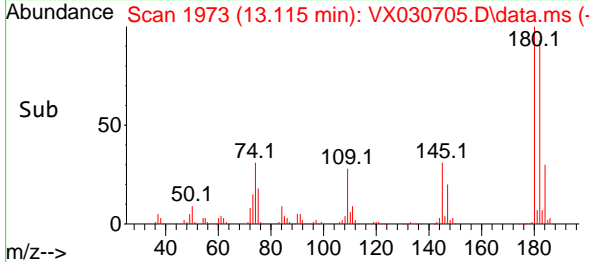
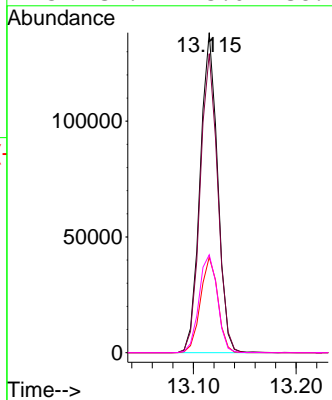


#69
 1,3,5-Trichlorobenzene
 Concen: 54.228 ug/L
 RT: 13.115 min Scan# 1973
 Delta R.T. -0.000 min
 Lab File: VX030705.D
 Acq: 19 Aug 2022 16:12

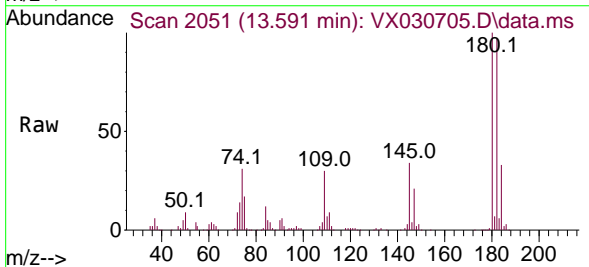
Instrument : MSVOA_X
 ClientSampleId : VSTD050792



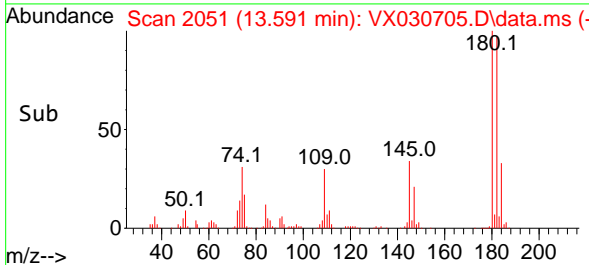
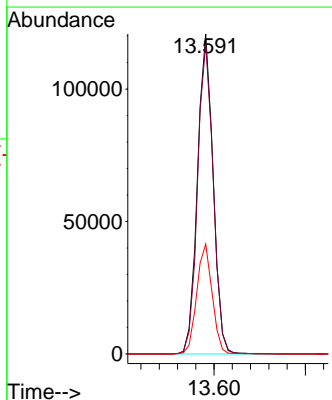
Tgt Ion:180 Resp: 163355
 Ion Ratio Lower Upper
 180 100
 182 93.9 73.7 110.5
 184 29.7 24.1 36.1
 145 32.2 25.6 38.4

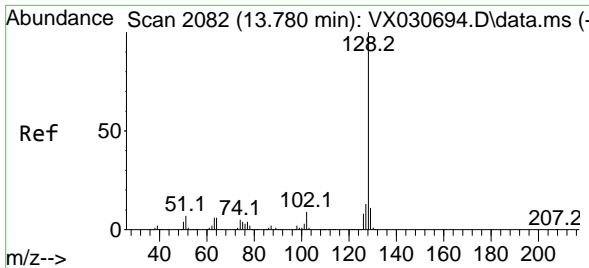


#70
 1,2,4-trichlorobenzene
 Concen: 54.235 ug/L
 RT: 13.591 min Scan# 2051
 Delta R.T. 0.000 min
 Lab File: VX030705.D
 Acq: 19 Aug 2022 16:12



Tgt Ion:180 Resp: 143483
 Ion Ratio Lower Upper
 180 100
 182 96.8 72.7 109.1
 145 33.8 26.6 40.0

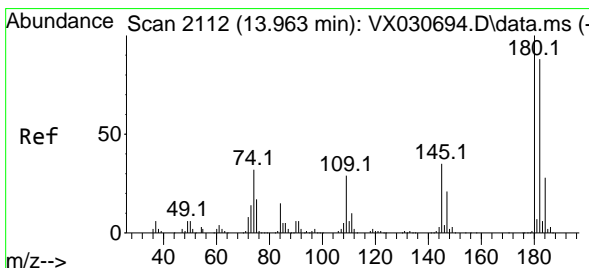
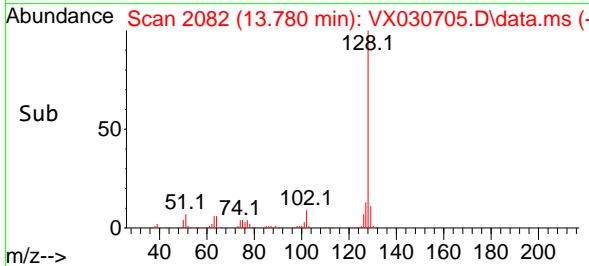
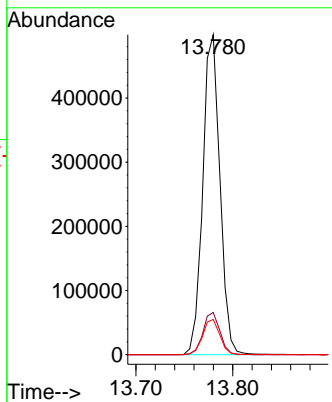
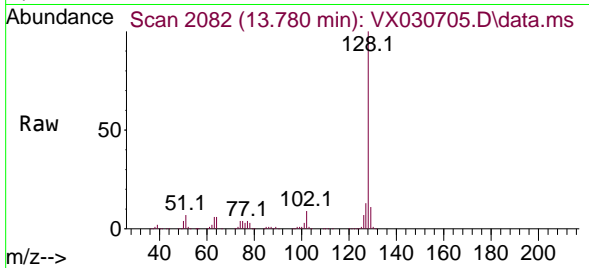




#71
 Naphthalene
 Concen: 56.211 ug/L
 RT: 13.780 min Scan# 2082
 Delta R.T. 0.000 min
 Lab File: VX030705.D
 Acq: 19 Aug 2022 16:12

Instrument : MSVOA_X
 ClientSampleId : VSTD050792

Tgt Ion	Resp	Lower	Upper
128	615568	100	100
127	13.0	10.3	15.5
129	11.1	8.8	13.2



#72
 1,2,3-Trichlorobenzene
 Concen: 55.676 ug/L
 RT: 13.963 min Scan# 2112
 Delta R.T. 0.000 min
 Lab File: VX030705.D
 Acq: 19 Aug 2022 16:12

Tgt Ion	Resp	Lower	Upper
180	155589	100	100
182	94.3	74.6	112.0
145	36.1	28.4	42.6

