

Data Path : Z:\VOASRV\HPCHEM1\MSVOA X\DATA\VX082018\  
 Data File : VX004148.D  
 Acq On : 20 Aug 2018 13:09  
 Operator : JC/MD  
 Sample : J4541-01  
 Misc : 5.0mL/MSVOA X/WATER  
 ALS Vial : 6 Sample Multiplier: 1

Instrument :  
 MSVOA\_X  
 ClientSampleId :  
 KY037MW097-180815

Integration Parameters: RTEINT.P  
 Integrator: RTE  
 Smoothing : ON Filtering: 5  
 Sampling : 1 Min Area: 3 % of largest Peak  
 Start Thrs: 0.2 Max Peaks: 100  
 Stop Thrs : 0 Peak Location: TOP

If leading or trailing edge < 100 prefer < Baseline drop else tangent >  
 Peak separation: 5

Method : Z:\VOASRV\HPCHEM1\MSVOA\_X\METHOD\82X081418W.M  
 Title : SW846 8260

Signal : TIC

peak #	R.T. min	first scan	max scan	last scan	PK TY	peak height	corr. area	corr. % max.	% of total
1	1.075	75	80	94	rBV	2011142	2599300	100.00%	23.690%
2	4.599	648	658	671	rBV	123562	343076	13.20%	3.127%
3	5.501	794	806	821	rBV	212154	604129	23.24%	5.506%
4	5.666	821	833	857	rVB	277720	767138	29.51%	6.992%
5	6.068	884	899	915	rBV	228169	591903	22.77%	5.395%
6	6.861	1019	1029	1051	rBV	414887	974768	37.50%	8.884%
7	8.720	1326	1334	1342	rBV	1052414	1653967	63.63%	15.074%
8	10.116	1557	1563	1578	rBV	880772	1171285	45.06%	10.675%
9	11.140	1725	1731	1740	rBV	826784	1040752	40.04%	9.486%
10	12.079	1879	1885	1899	rBV	1019399	1225698	47.15%	11.171%

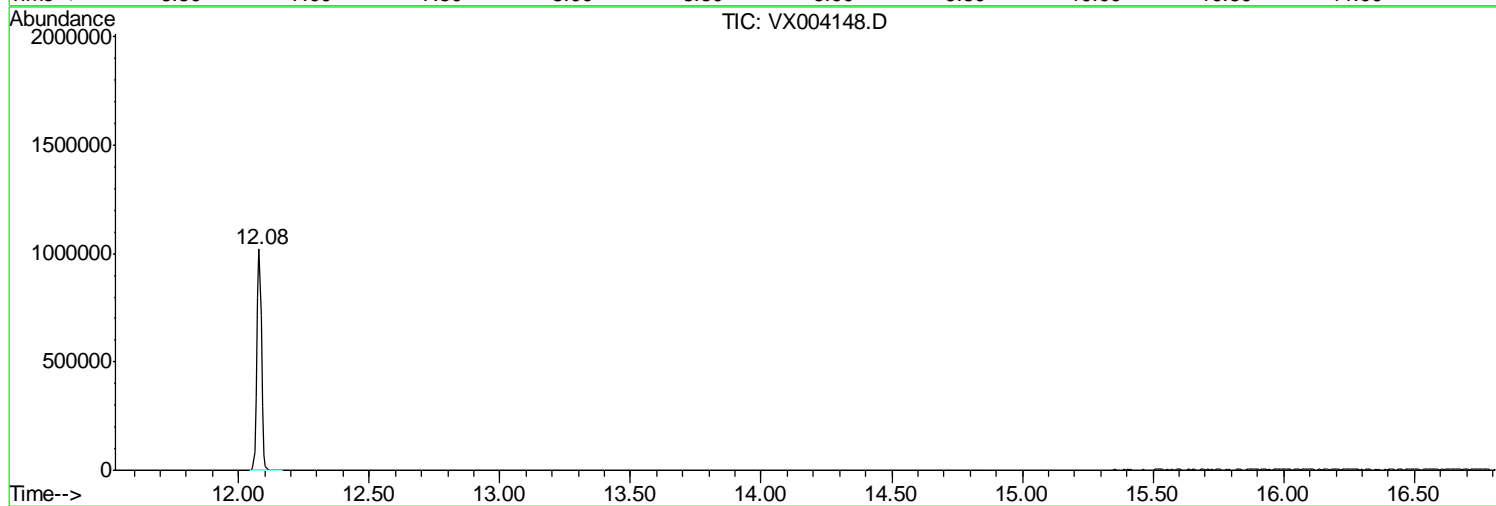
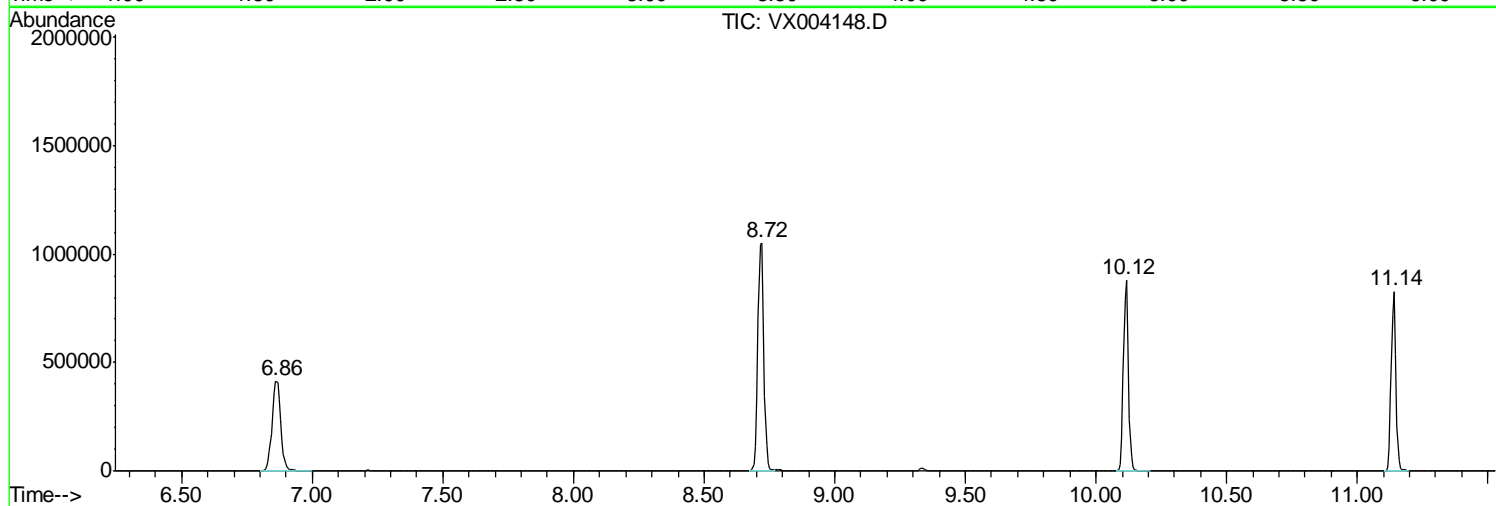
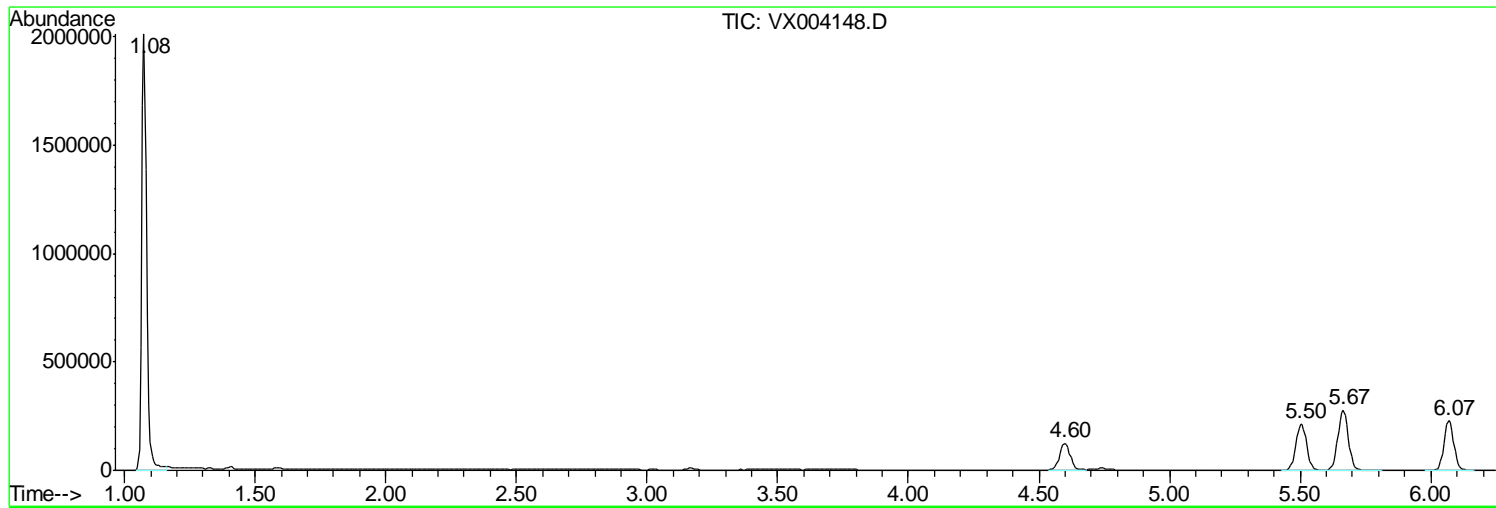
Sum of corrected areas: 10972016

Data Path : Z:\VOASRV\HPCHEM1\MSVOA X\DATA\VX082018\  
Data File : VX004148.D  
Acq On : 20 Aug 2018 13:09  
Operator : JC/MD  
Sample : J4541-01  
Misc : 5.0mL/MSVOA X/WATER  
ALS Vial : 6 Sample Multiplier: 1

Instrument :  
MSVOA\_X  
ClientSampleId :  
KY037MW097-180815

Quant Method : Z:\VOASRV\HPCHEM1\MSVOA\_X\METHOD\82X081418W.M  
Quant Title : SW846 8260

TIC Library : C:\DATABASE\NIST11.L  
TIC Integration Parameters: LSCINT.P



Data Path : Z:\VOASRV\HPCHEM1\MSVOA\_X\DATA\VX082018\  
Data File : VX004148.D  
Acq On : 20 Aug 2018 13:09  
Operator : JC/MD  
Sample : J4541-01  
Misc : 5.0mL/MSVOA\_X/WATER  
ALS Vial : 6 Sample Multiplier: 1

Instrument :  
MSVOA\_X  
ClientSampleId :  
KY037MW097-180815

Quant Method : Z:\VOASRV\HPCHEM1\MSVOA\_X\METHOD\82X081418W.M  
Quant Title : SW846 8260

TIC Library : C:\DATABASE\NIST11.L  
TIC Integration Parameters: LSCINT.P

No Library Search Compounds Detected

\*\*\*\*\*

Data Path : Z:\VOASRV\HPCHEM1\MSVOA\_X\DATA\VX082018\  
Data File : VX004148.D  
Acq On : 20 Aug 2018 13:09  
Operator : JC/MD  
Sample : J4541-01  
Misc : 5.0mL/MSVOA\_X/WATER  
ALS Vial : 6 Sample Multiplier: 1

Instrument :  
MSVOA\_X  
ClientSampleId :  
KY037MW097-180815

Quant Method : Z:\VOASRV\HPCHEM1\MSVOA\_X\METHOD\82X081418W.M  
Quant Title : SW846 8260

TIC Library : C:\DATABASE\NIST11.L  
TIC Integration Parameters: LSCINT.P

TIC Top Hit name	RT	EstConc	Units	Response	--Internal Standard--			
					#	RT	Resp	Conc

---