

Data Path : Z:\VOASRV\HPCHEM1\MSVOA X\DATA\VX082020\
 Data File : VX018036.D
 Acq On : 20 Aug 2020 15:42
 Operator : JC/SP
 Sample : L3721-03DL 4X
 Misc : 5.0mL/MSVOA X/WATER
 ALS Vial : 16 Sample Multiplier: 1

Instrument :
 MSVOA_X
 ClientSampleId :
 I-LGC-6DL

Quant Time: Aug 21 01:26:31 2020
 Quant Method : Z:\VOASRV\HPCHEM1\MSVOA_X\METHOD\82X081920W.M
 Quant Title : SW846 8260
 QLast Update : Wed Aug 19 05:36:51 2020
 Response via : Initial Calibration

Internal Standards	R.T.	QIon	Response	Conc	Units	Dev(Min)
1) Pentafluorobenzene	5.63	168	590517	50.00	ug/l	0.00
34) 1,4-Difluorobenzene	6.83	114	940415	50.00	ug/l	-0.01
63) Chlorobenzene-d5	10.10	117	864960	50.00	ug/l	0.00
72) 1,4-Dichlorobenzene-d4	12.06	152	421026	50.00	ug/l	0.00

System Monitoring Compounds

33) 1,2-Dichloroethane-d4	6.03	65	383972	44.36	ug/l	0.00
Spiked Amount	50.000		Recovery	=	88.72%	
35) Dibromofluoromethane	5.46	113	311914	44.54	ug/l	0.00
Spiked Amount	50.000		Recovery	=	89.08%	
50) Toluene-d8	8.70	98	1147143	46.34	ug/l	0.00
Spiked Amount	50.000		Recovery	=	92.68%	
62) 4-Bromofluorobenzene	11.12	95	419185	45.85	ug/l	0.00
Spiked Amount	50.000		Recovery	=	91.70%	

Target Compounds

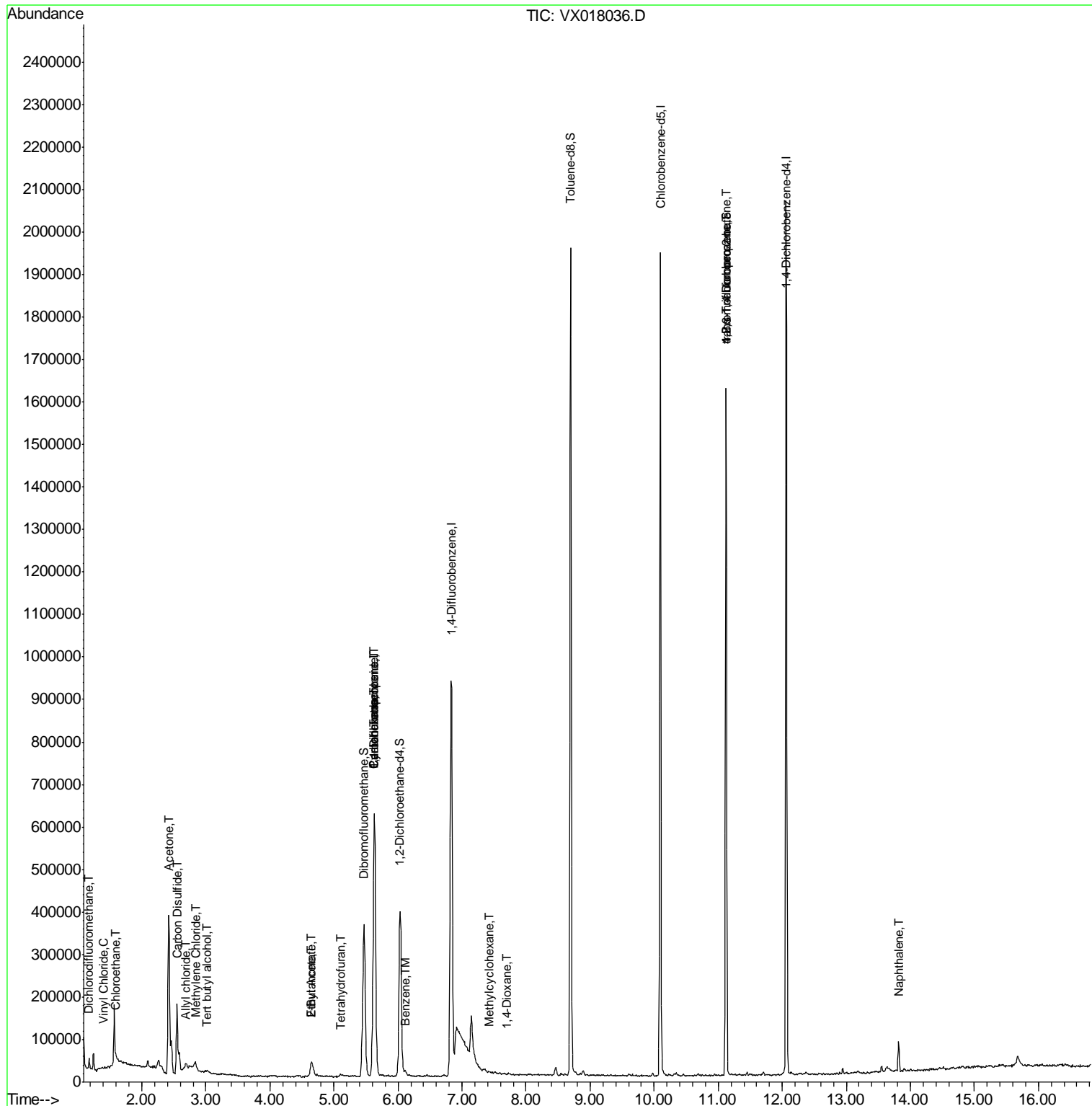
						Qvalue
2) Dichlorodifluoromethane	1.18	85	666	1.062	ug/l	87
4) Vinyl Chloride	1.40	62	656	2.334	ug/l #	20
6) Chloroethane	1.60	64	26143	5.903	ug/l #	49
11) Tert butyl alcohol	3.01	59	1074	0.643	ug/l #	76
14) Allyl chloride	2.68	41	10298	1.085	ug/l #	44
16) Acetone	2.42	43	400018	117.460	ug/l	98
17) Carbon Disulfide	2.55	76	212031	16.418	ug/l	99
20) Methylene Chloride	2.84	84	7605	1.212	ug/l #	81
25) 2-Butanone	4.64	43	39154	7.594	ug/l	95
29) Tetrahydrofuran	5.11	42	4632	1.447	ug/l #	72
31) Cyclohexane	5.63	56	12324	1.378	ug/l #	1
36) 1,1-Dichloropropene	5.62	75	45924	5.834	ug/l #	41
37) Ethyl Acetate	4.64	43	39154	4.157	ug/l #	70
38) Carbon Tetrachloride	5.63	117	60141	5.904	ug/l #	16
39) Methylcyclohexane	7.43	83	73	0.820	ug/l #	36
40) Benzene	6.12	78	14247	0.601	ug/l	95
49) 1,4-Dioxane	7.70	88	215	1.393	ug/l #	1
76) 1,2,3-Trichloropropane	11.12	75	209608	23.410	ug/l #	36
81) trans-1,4-Dichloro-2-buten	11.12	75	209608	61.501	ug/l #	12
95) Naphthalene	13.82	128	42232	1.610	ug/l	98

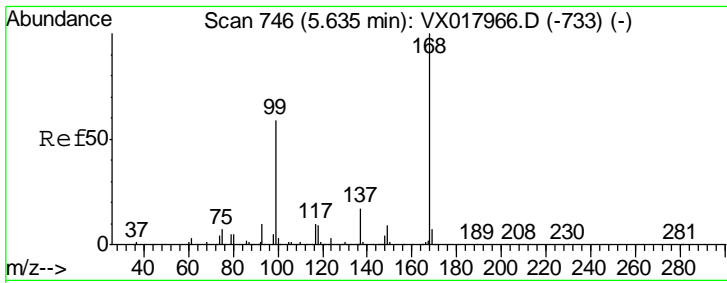
(#) = qualifier out of range (m) = manual integration (+) = signals summed

Data Path : Z:\VOASRV\HPCHEM1\MSVOA X\DATA\VX082020\
 Data File : VX018036.D
 Acq On : 20 Aug 2020 15:42
 Operator : JC/SP
 Sample : L3721-03DL 4X
 Misc : 5.0mL/MSVOA X/WATER
 ALS Vial : 16 Sample Multiplier: 1

Instrument :
 MSVOA_X
 Client Sampled :
 I-LGC-6DL

Quant Time: Aug 21 01:26:31 2020
 Quant Method : Z:\VOASRV\HPCHEM1\MSVOA_X\METHOD\82X081920W.M
 Quant Title : SW846 8260
 QLast Update : Wed Aug 19 05:36:51 2020
 Response via : Initial Calibration

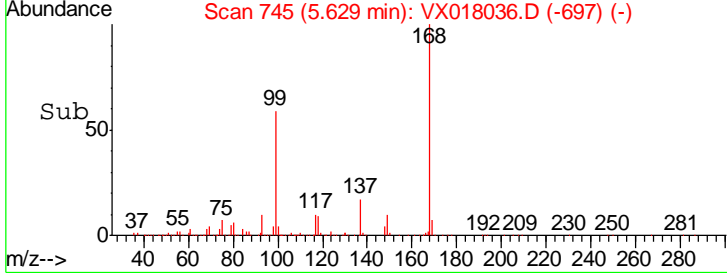
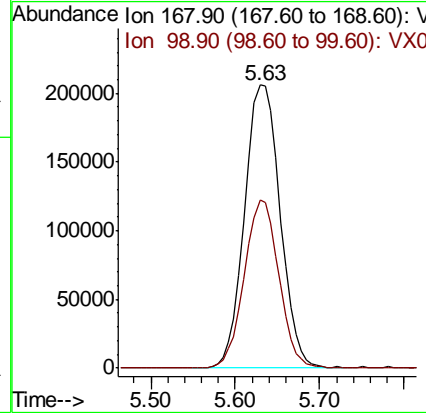
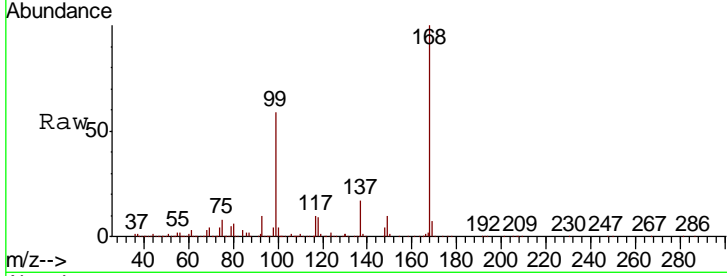




#1
 Pentafluorobenzene
 Concen: 50.000 ug/l
 RT: 5.63 min Scan# 745
 Delta R.T. -0.01 min
 Lab File: VX018036.D
 Acq: 20 Aug 2020 15:42

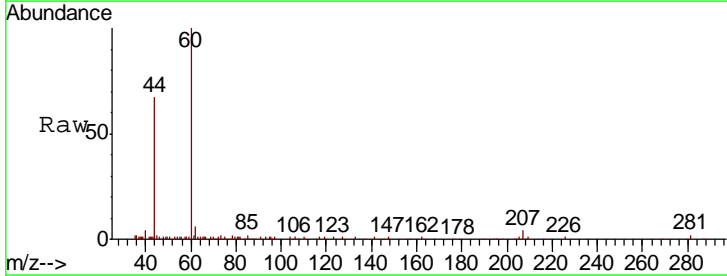
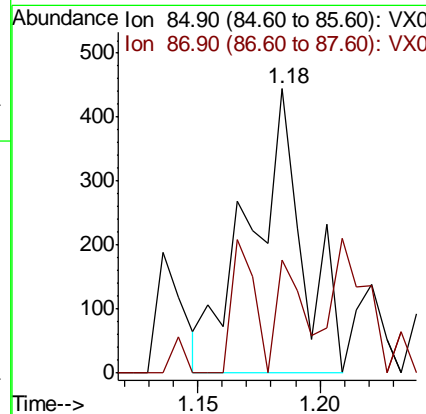
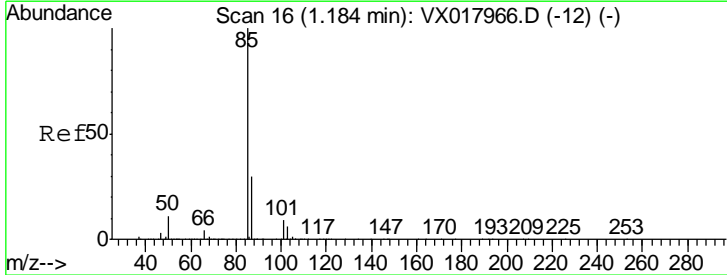
Instrument : MSVOA_X
 ClientSampled : I-LGC-6DL

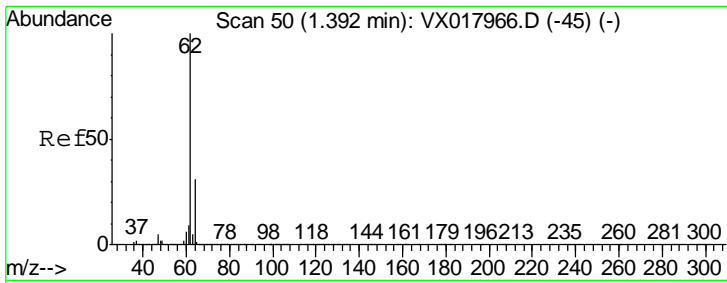
Tgt Ion	Resp	Lower	Upper
168	590517		
99	59.3	47.4	71.2



#2
 Dichlorodifluoromethane
 Concen: 1.062 ug/l
 RT: 1.18 min Scan# 16
 Delta R.T. 0.00 min
 Lab File: VX018036.D
 Acq: 20 Aug 2020 15:42

Tgt Ion	Resp	Lower	Upper
85	666		
87	23.4	15.3	45.8

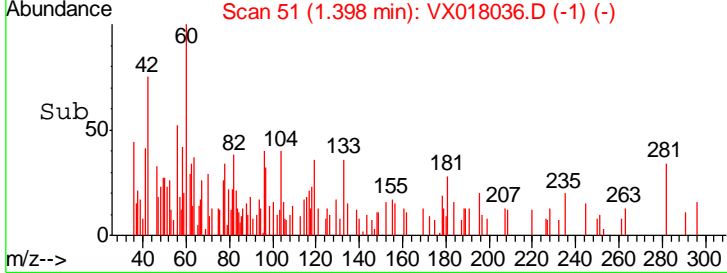
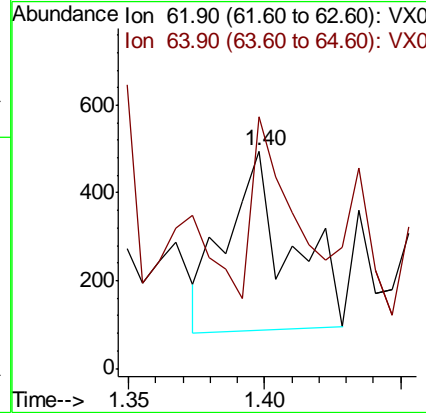
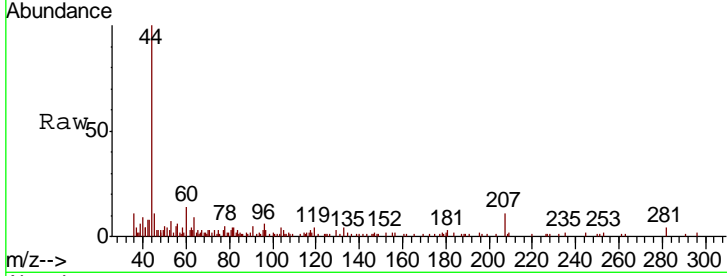




#4
 Vinyl Chloride
 Concen: 2.334 ug/l
 RT: 1.40 min Scan# 51
 Delta R.T. 0.01 min
 Lab File: VX018036.D
 Acq: 20 Aug 2020 15:42

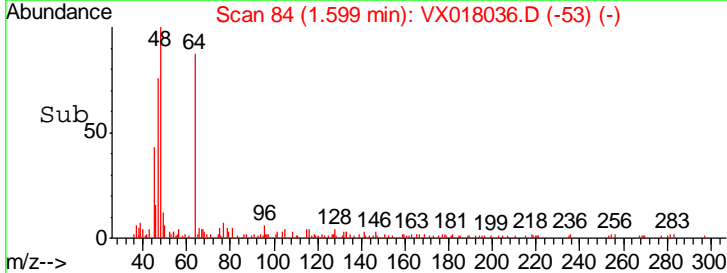
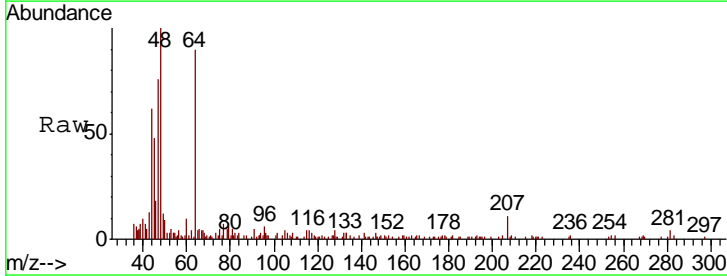
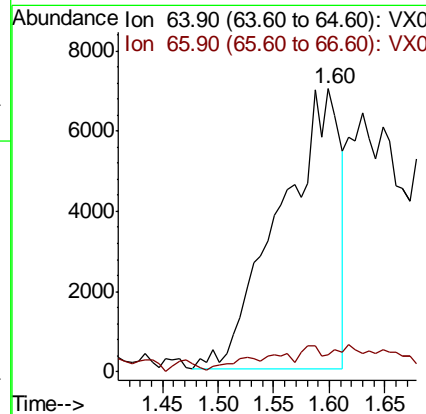
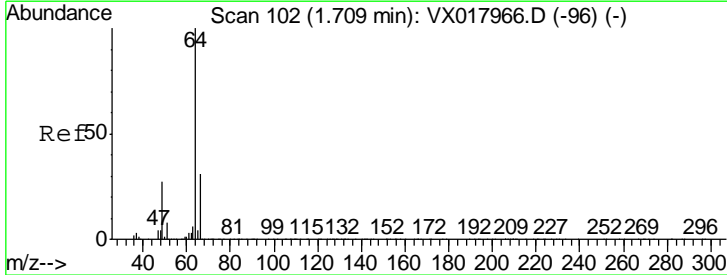
Instrument : MSVOA_X
 ClientSampled : I-LGC-6DL

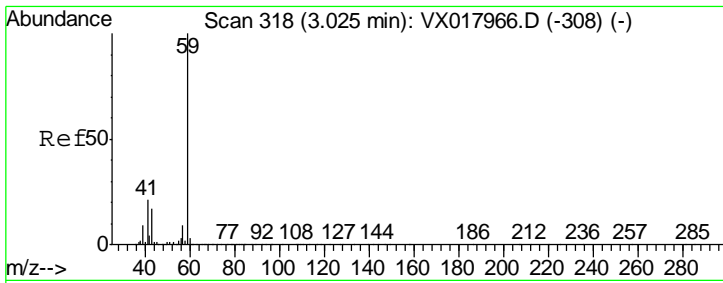
Tgt Ion	Resp	Lower	Upper
62	100		
64	74.7	24.7	37.1#



#6
 Chloroethane
 Concen: 5.903 ug/l
 RT: 1.60 min Scan# 84
 Delta R.T. -0.11 min
 Lab File: VX018036.D
 Acq: 20 Aug 2020 15:42

Tgt Ion	Resp	Lower	Upper
64	100		
66	3.1	25.0	37.4#

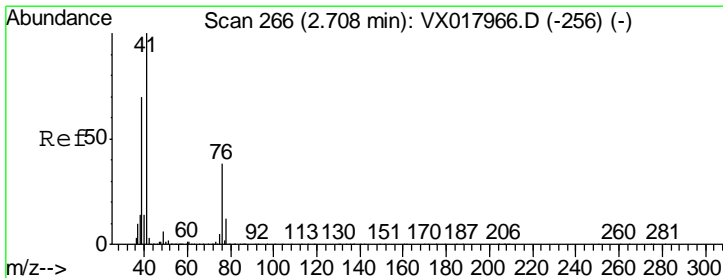
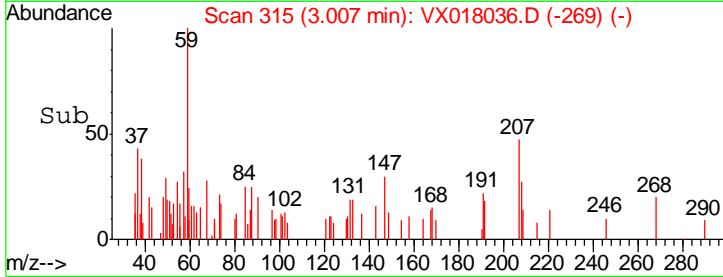
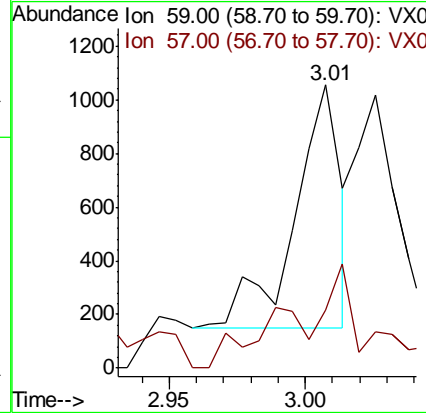
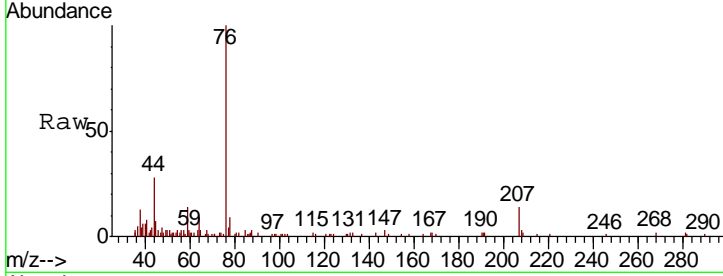




#11
 Tert butyl alcohol
 Concen: 0.643 ug/l
 RT: 3.01 min Scan# 315
 Delta R.T. -0.02 min
 Lab File: VX018036.D
 Acq: 20 Aug 2020 15:42

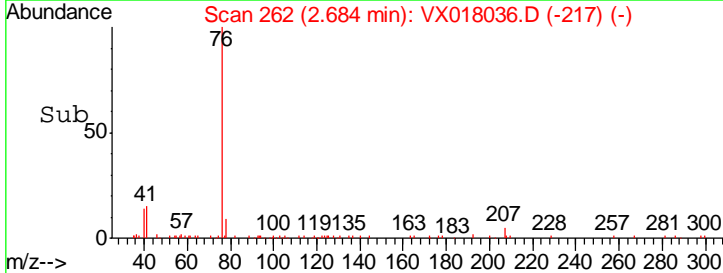
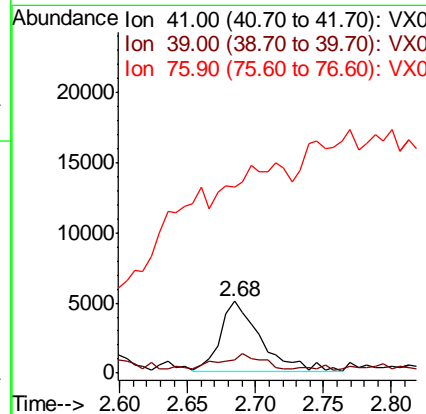
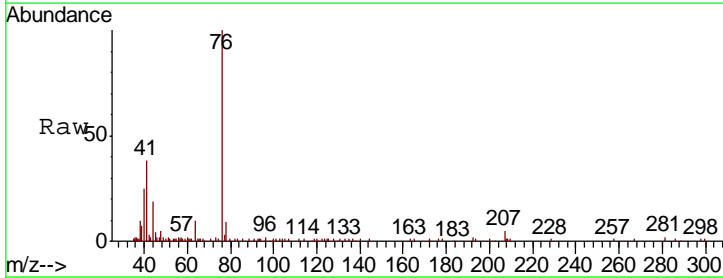
Instrument :
 MSVOA_X
 ClientSampled :
 I-LGC-6DL

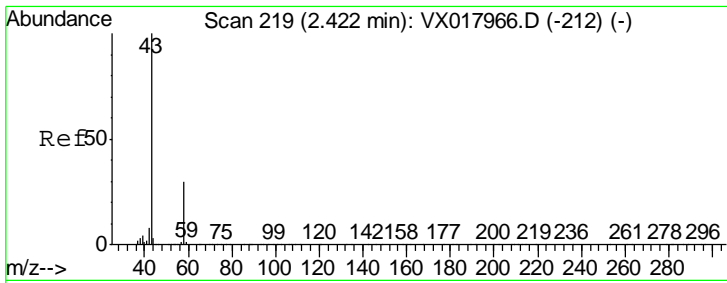
Tgt Ion	Resp	Lower	Upper
59	1074		
57	19.7	8.6	13.0#



#14
 Allyl chloride
 Concen: 1.085 ug/l
 RT: 2.68 min Scan# 262
 Delta R.T. -0.02 min
 Lab File: VX018036.D
 Acq: 20 Aug 2020 15:42

Tgt Ion	Resp	Lower	Upper
41	10298		
39	21.3	51.7	77.5#
76	0.0	26.3	39.5#

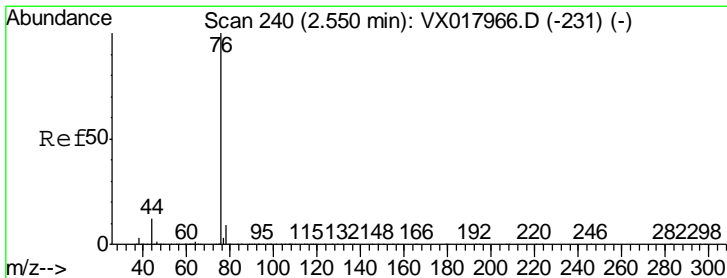
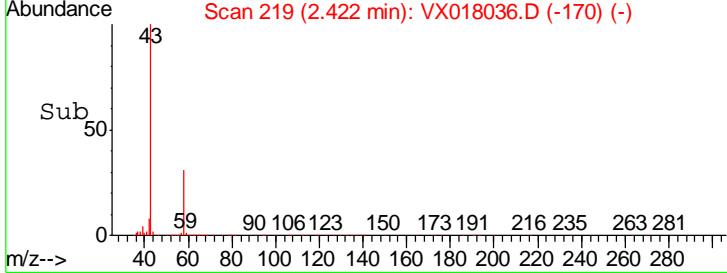
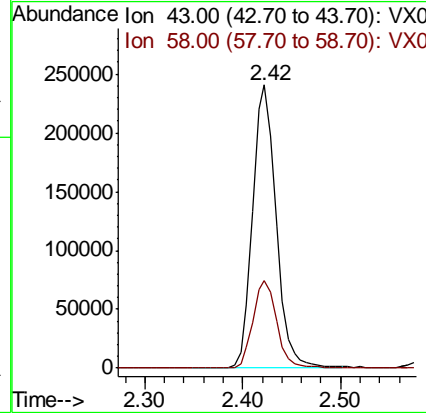
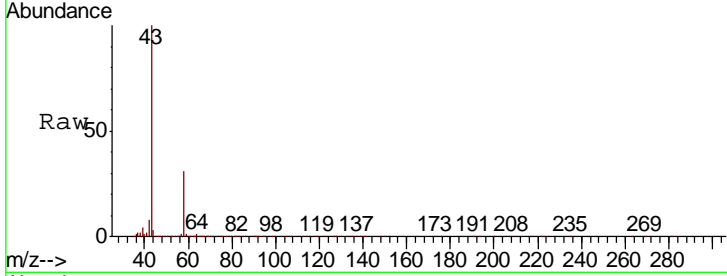




#16
 Acetone
 Concen: 117.460 ug/l
 RT: 2.42 min Scan# 219
 Delta R.T. 0.00 min
 Lab File: VX018036.D
 Acq: 20 Aug 2020 15:42

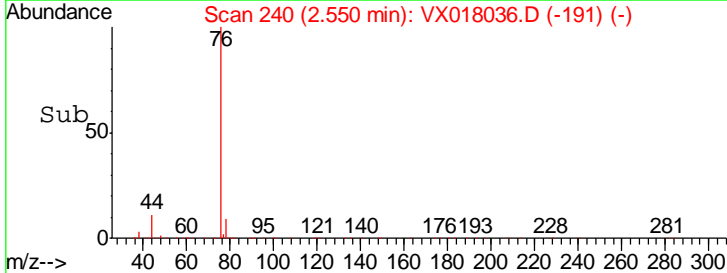
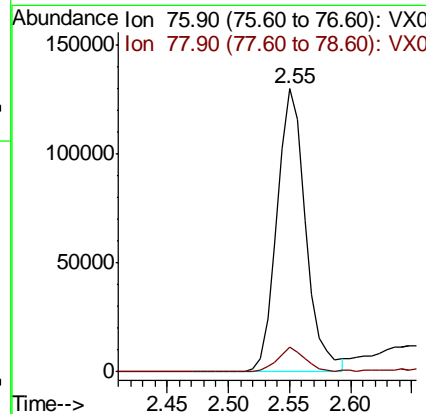
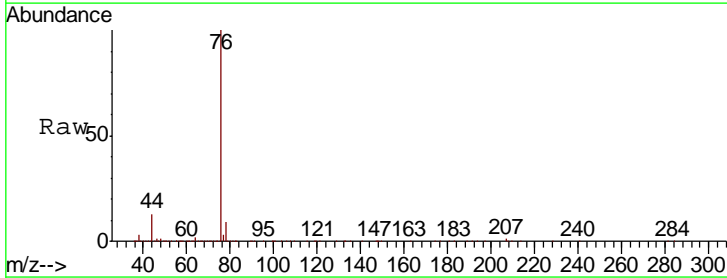
Instrument :
 MSVOA_X
 ClientSampled :
 I-LGC-6DL

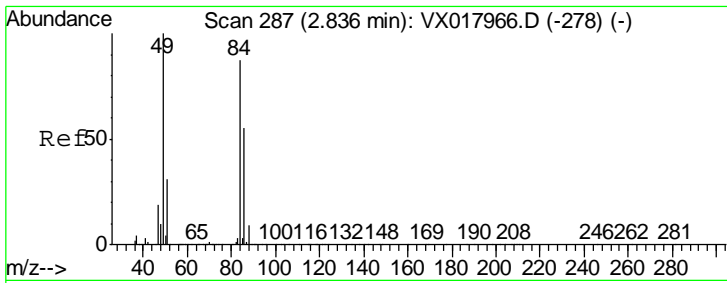
Tgt Ion: 43 Resp: 400018
 Ion Ratio Lower Upper
 43 100
 58 30.9 23.8 35.8



#17
 Carbon Disulfide
 Concen: 16.418 ug/l
 RT: 2.55 min Scan# 240
 Delta R.T. 0.00 min
 Lab File: VX018036.D
 Acq: 20 Aug 2020 15:42

Tgt Ion: 76 Resp: 212031
 Ion Ratio Lower Upper
 76 100
 78 8.8 7.3 10.9

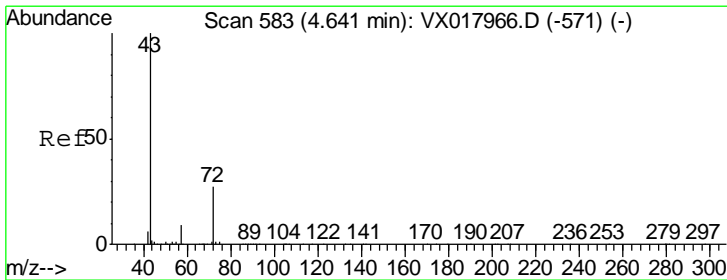
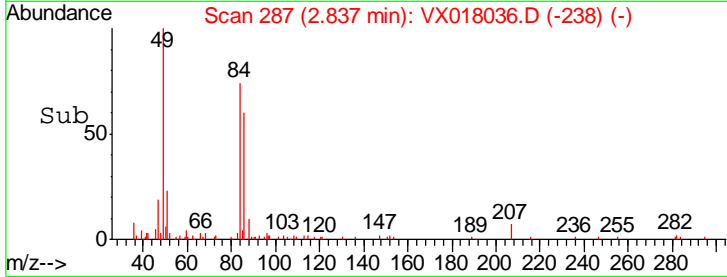
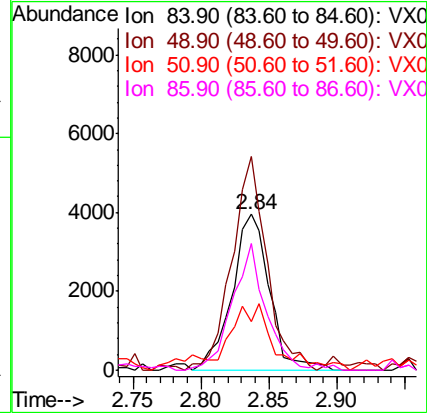
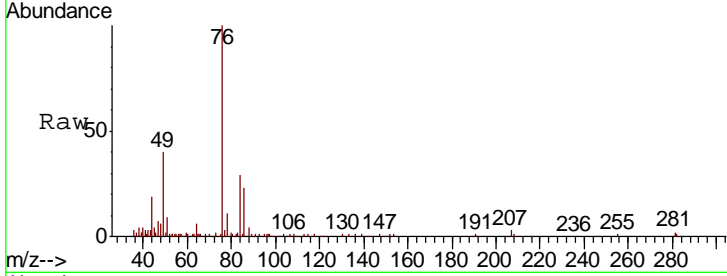




#20
Methylene Chloride
Concen: 1.212 ug/l
RT: 2.84 min Scan# 287
Delta R.T. 0.00 min
Lab File: VX018036.D
Acq: 20 Aug 2020 15:42

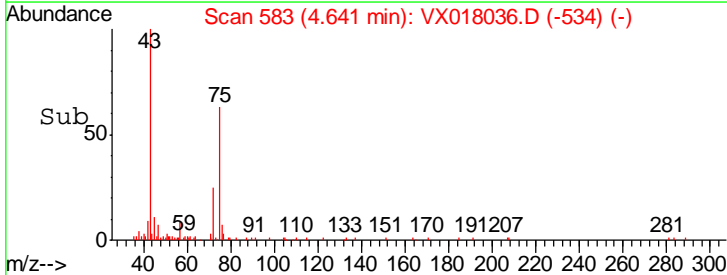
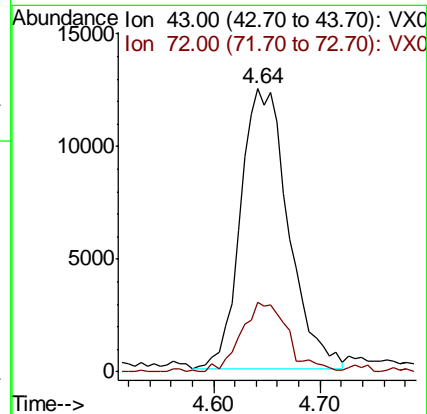
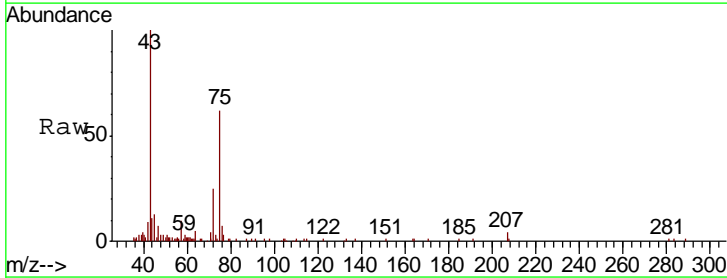
Instrument :
MSVOA_X
ClientSampled :
I-LGC-6DL

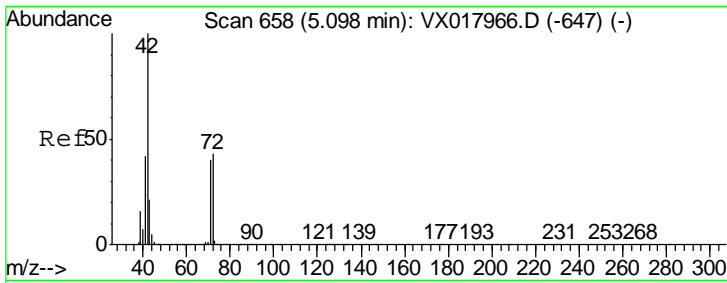
Tgt Ion	Resp	Lower	Upper
84	7605		
49	134.2	91.8	137.6
51	26.6	27.8	41.8#
86	81.2	50.5	75.7#



#25
2-Butanone
Concen: 7.594 ug/l
RT: 4.64 min Scan# 583
Delta R.T. 0.00 min
Lab File: VX018036.D
Acq: 20 Aug 2020 15:42

Tgt Ion	Resp	Lower	Upper
43	39154		
72	24.2	21.4	32.2

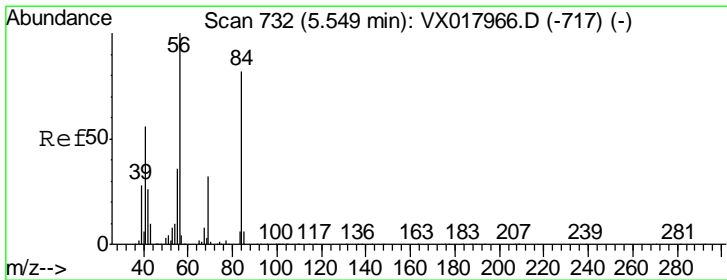
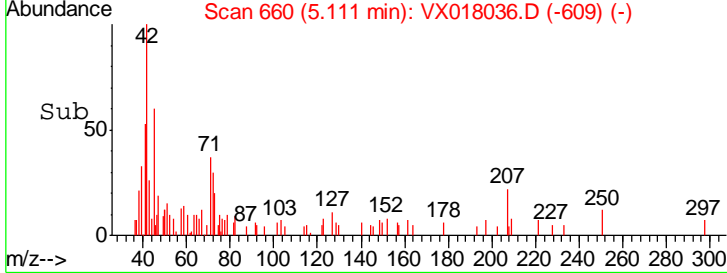
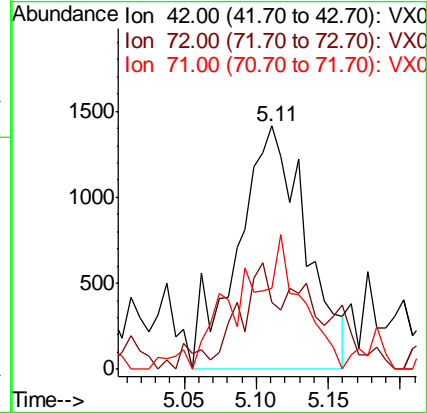
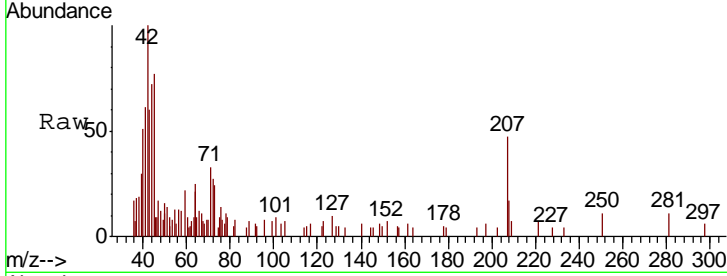




#29
 Tetrahydrofuran
 Concen: 1.447 ug/l
 RT: 5.11 min Scan# 660
 Delta R.T. 0.01 min
 Lab File: VX018036.D
 Acq: 20 Aug 2020 15:42

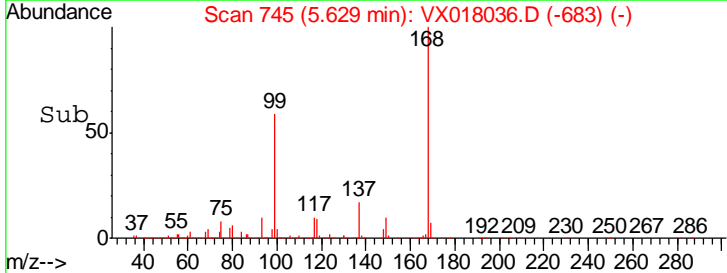
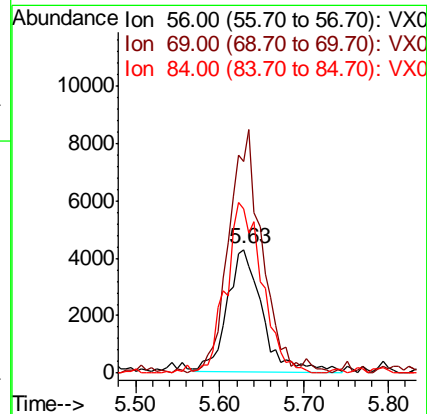
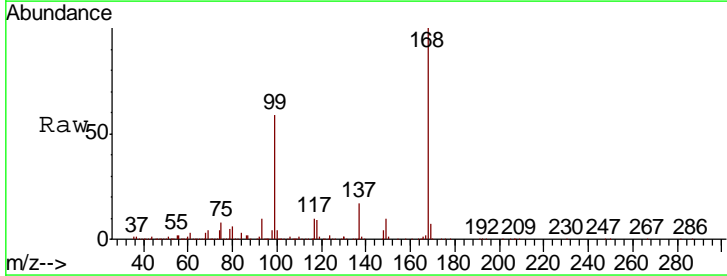
Instrument :
 MSVOA_X
 ClientSampled :
 I-LGC-6DL

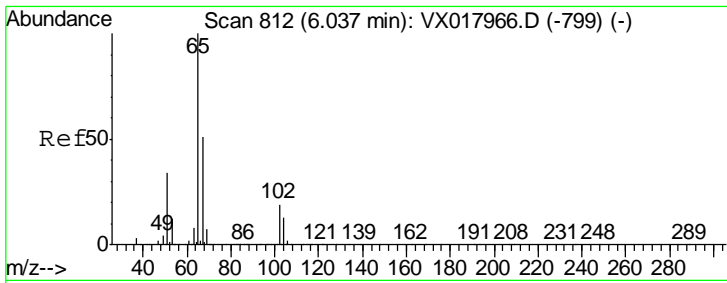
Tgt Ion	Resp	Lower	Upper
42	4632		
72	19.3	35.9	53.9#
71	51.1	33.0	49.4#



#31
 Cyclohexane
 Concen: 1.378 ug/l
 RT: 5.63 min Scan# 745
 Delta R.T. 0.08 min
 Lab File: VX018036.D
 Acq: 20 Aug 2020 15:42

Tgt Ion	Resp	Lower	Upper
56	12324		
69	171.4	25.3	37.9#
84	133.4	65.3	97.9#

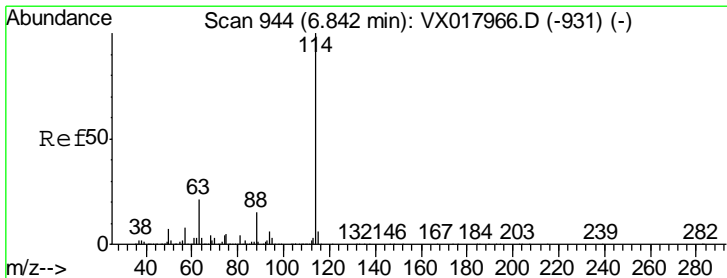
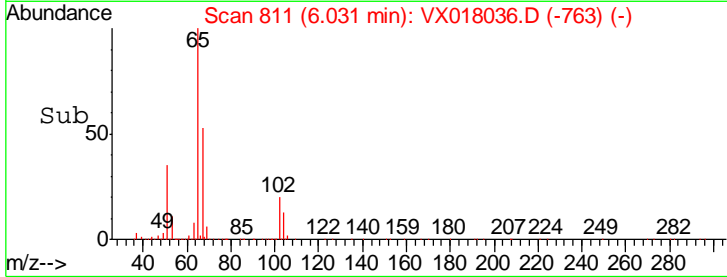
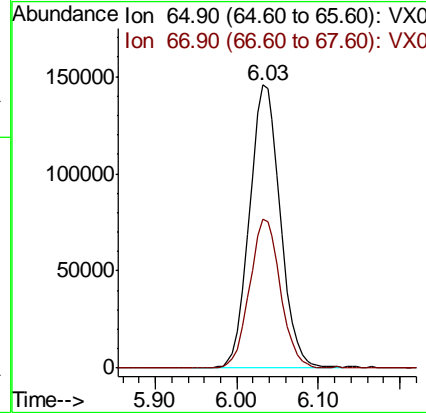
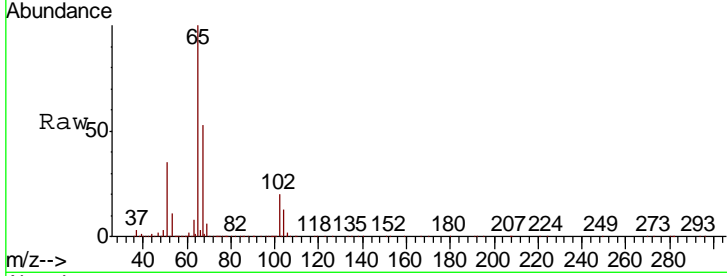




#33
 1,2-Dichloroethane-d4
 Concen: 44.356 ug/l
 RT: 6.03 min Scan# 811
 Delta R.T. -0.01 min
 Lab File: VX018036.D
 Acq: 20 Aug 2020 15:42

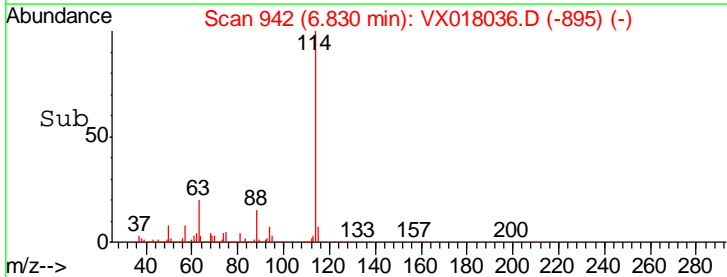
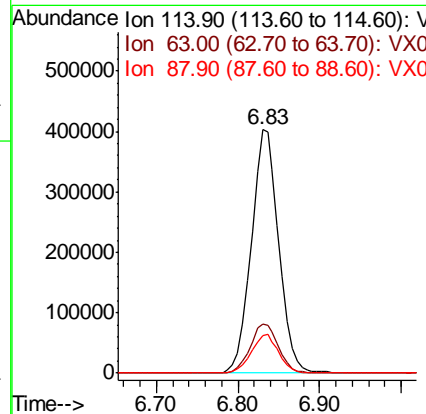
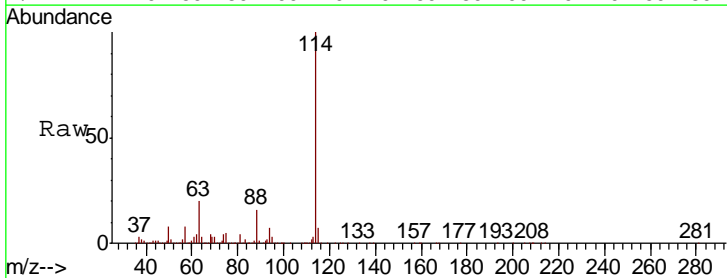
Instrument :
 MSVOA_X
ClientSampled :
 I-LGC-6DL

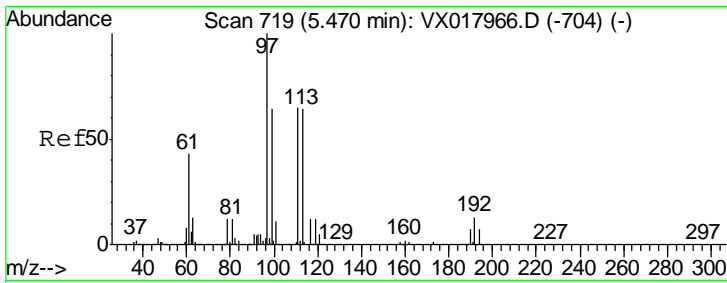
Tgt Ion	Resp	Lower	Upper
65	383972		
67	52.5	0.0	103.0



#34
 1,4-Difluorobenzene
 Concen: 50.000 ug/l
 RT: 6.83 min Scan# 942
 Delta R.T. -0.01 min
 Lab File: VX018036.D
 Acq: 20 Aug 2020 15:42

Tgt Ion	Resp	Lower	Upper
114	940415		
63	20.1	0.0	42.6
88	15.5	0.0	30.2

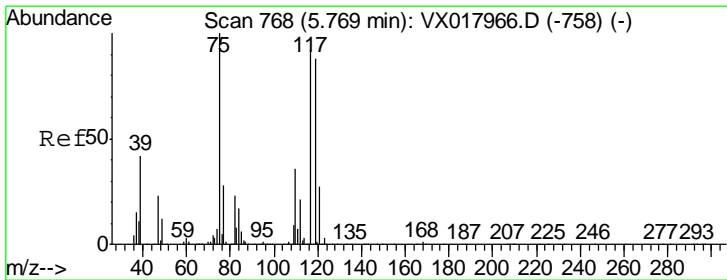
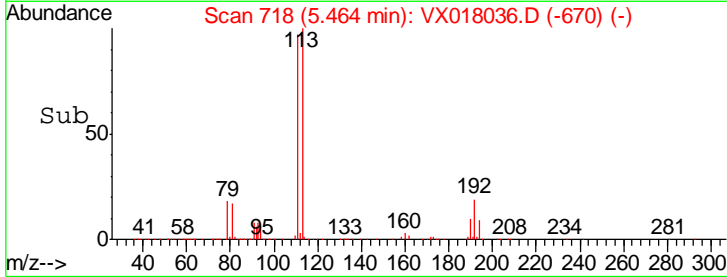
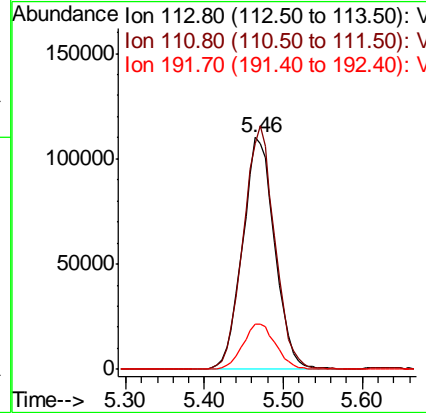
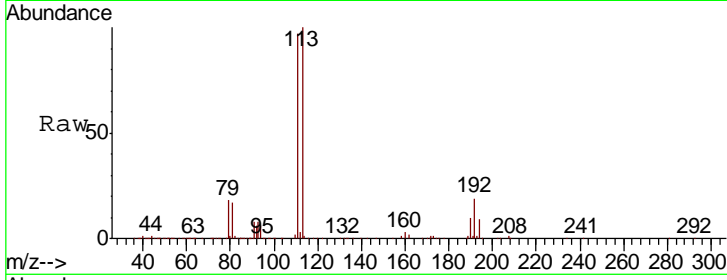




#35
 Dibromofluoromethane
 Concen: 44.539 ug/l
 RT: 5.46 min Scan# 718
 Delta R.T. -0.01 min
 Lab File: VX018036.D
 Acq: 20 Aug 2020 15:42

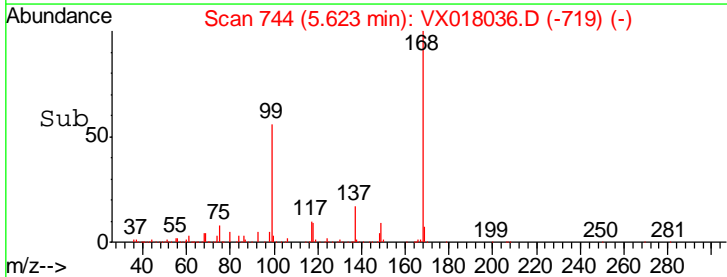
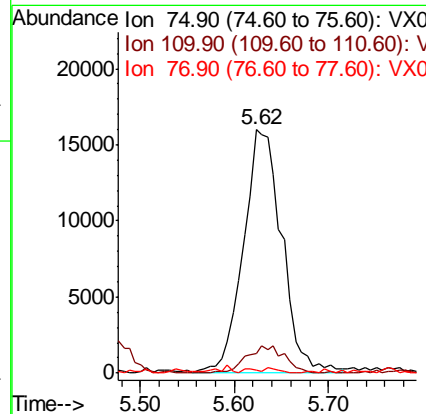
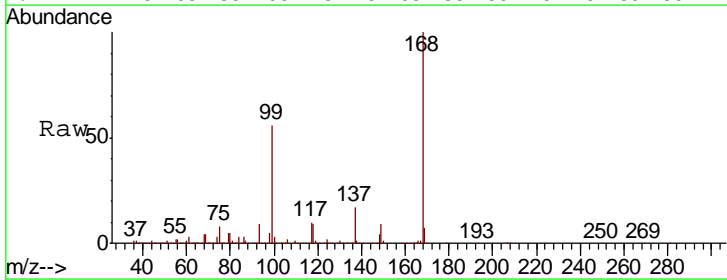
Instrument :
 MSVOA_X
 ClientSampled :
 I-LGC-6DL

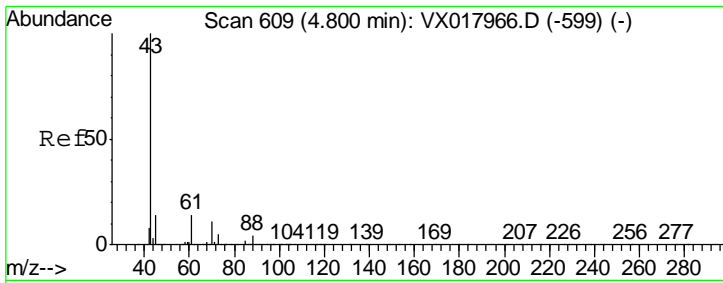
Tgt Ion	Resp	Lower	Upper
113	311914		
111	102.7	83.5	125.3
192	20.0	16.2	24.4



#36
 1,1-Dichloropropene
 Concen: 5.834 ug/l
 RT: 5.62 min Scan# 744
 Delta R.T. -0.15 min
 Lab File: VX018036.D
 Acq: 20 Aug 2020 15:42

Tgt Ion	Resp	Lower	Upper
75	45924		
75	100		
110	0.0	18.7	56.1#
77	0.6	24.4	36.6#

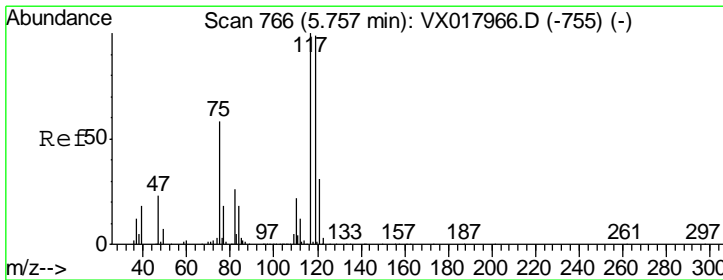
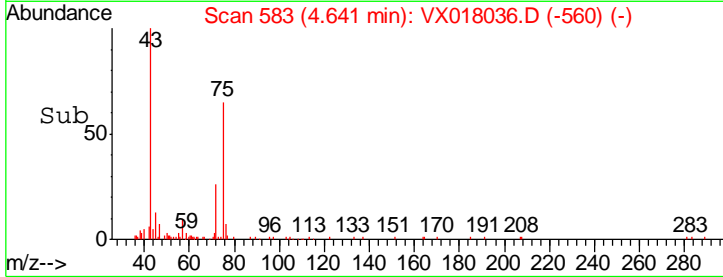
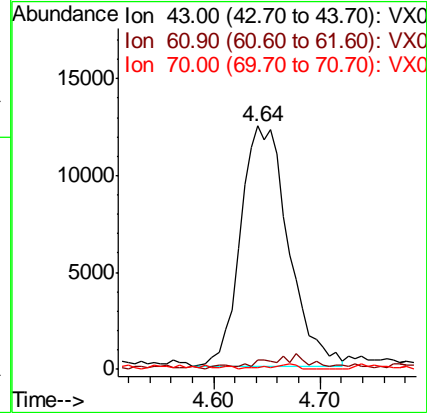
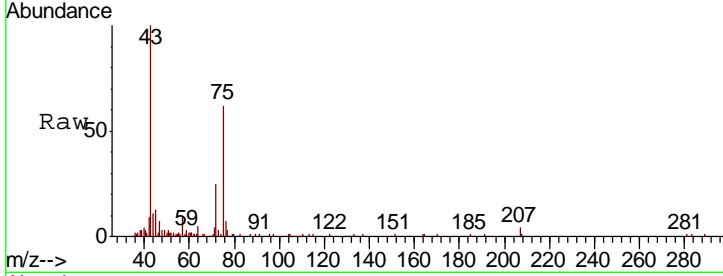




#37
 Ethyl Acetate
 Concen: 4.157 ug/l
 RT: 4.64 min Scan# 583
 Delta R.T. -0.16 min
 Lab File: VX018036.D
 Acq: 20 Aug 2020 15:42

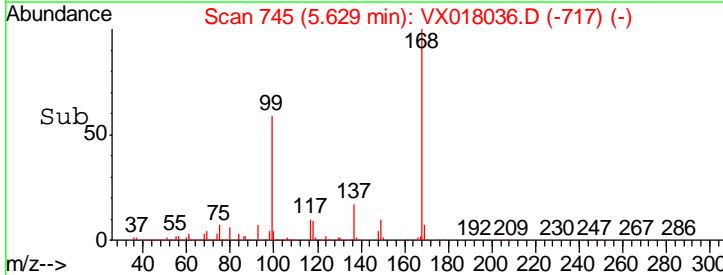
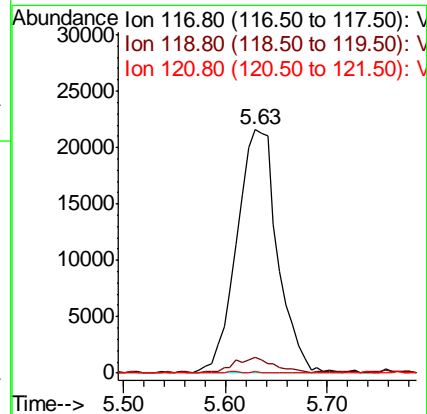
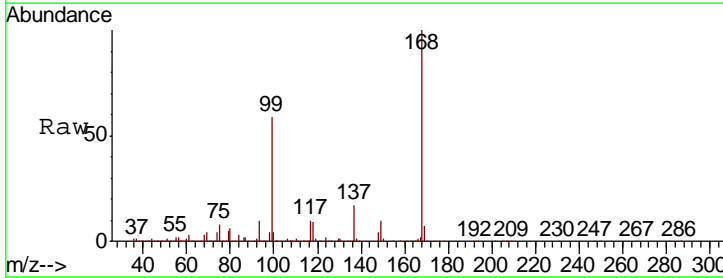
Instrument :
 MSVOA_X
 ClientSampled :
 I-LGC-6DL

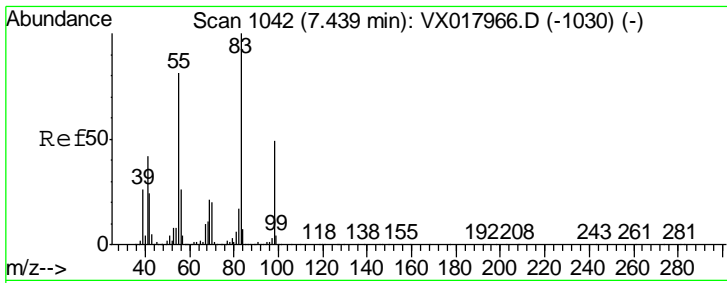
Tgt Ion	Ratio	Lower	Upper
43	100		
61	1.5	11.3	16.9#
70	0.0	8.5	12.7#



#38
 Carbon Tetrachloride
 Concen: 5.904 ug/l
 RT: 5.63 min Scan# 745
 Delta R.T. -0.13 min
 Lab File: VX018036.D
 Acq: 20 Aug 2020 15:42

Tgt Ion	Ratio	Lower	Upper
117	100		
119	6.4	79.0	118.6#
121	0.9	24.7	37.1#

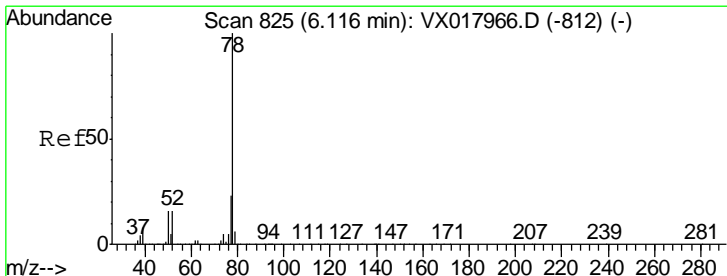
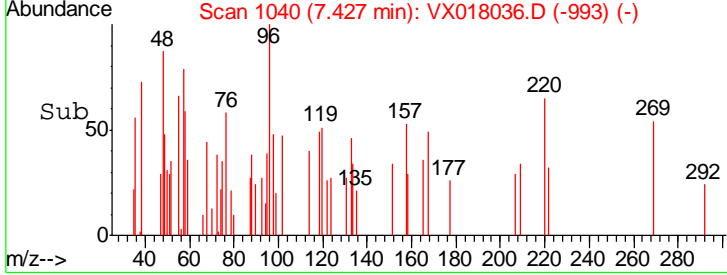
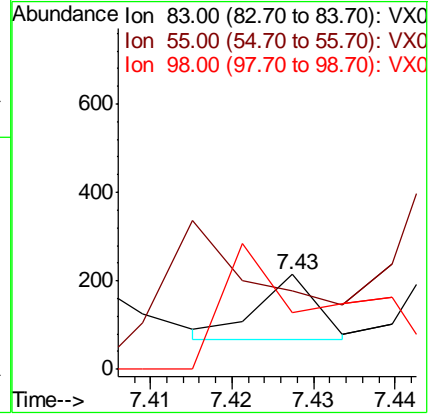
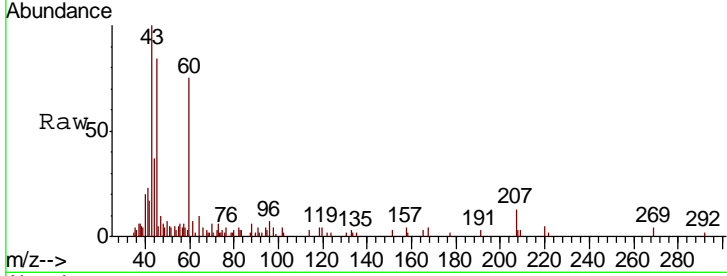




#39
 Methylcyclohexane
 Concen: 0.820 ug/l
 RT: 7.43 min Scan# 1040
 Delta R.T. -0.01 min
 Lab File: VX018036.D
 Acq: 20 Aug 2020 15:42

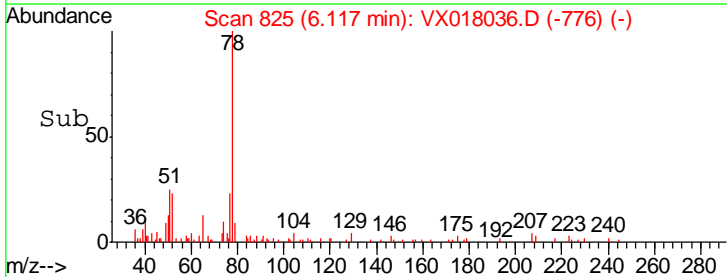
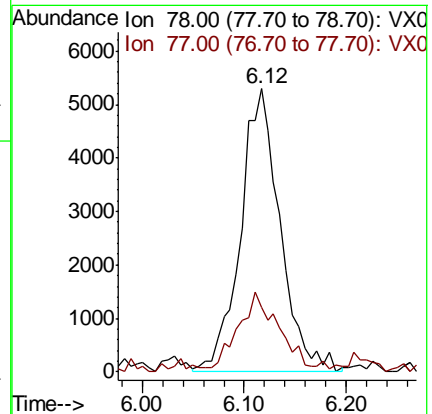
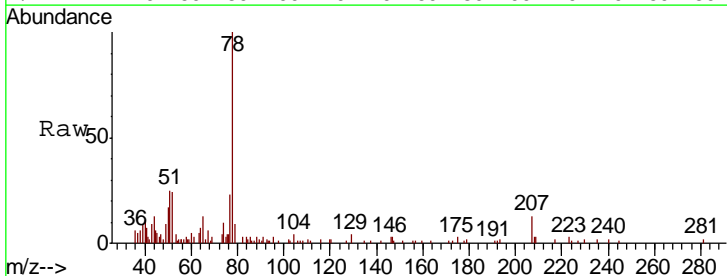
Instrument :
 MSVOA_X
 ClientSampled :
 I-LGC-6DL

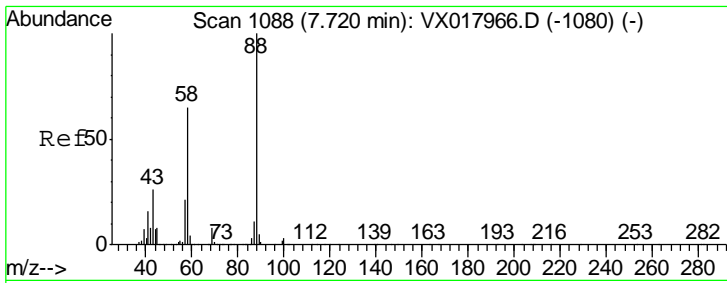
Tgt Ion	Resp	Lower	Upper
83	100		
55	25.0	64.5	96.7#
98	94.1	39.0	58.6#



#40
 Benzene
 Concen: 0.601 ug/l
 RT: 6.12 min Scan# 825
 Delta R.T. 0.00 min
 Lab File: VX018036.D
 Acq: 20 Aug 2020 15:42

Tgt Ion	Resp	Lower	Upper
78	100		
77	21.1	18.8	28.2

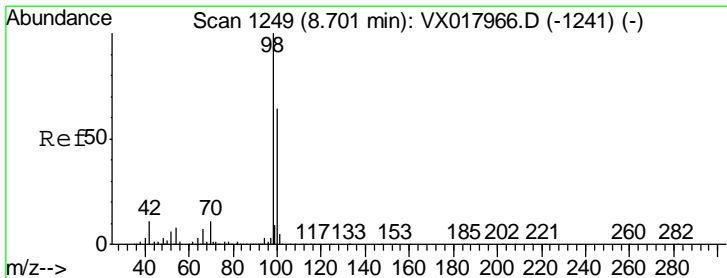
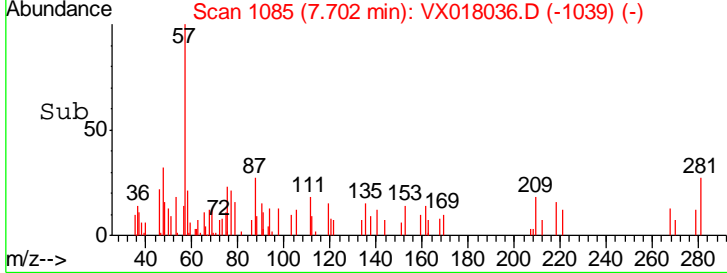
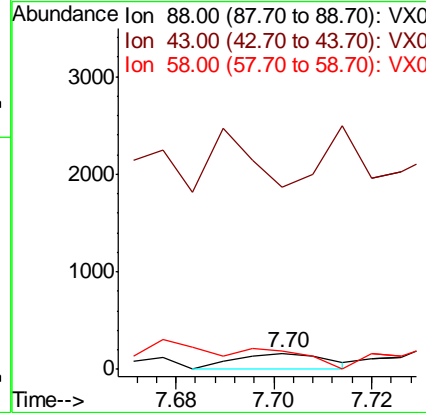
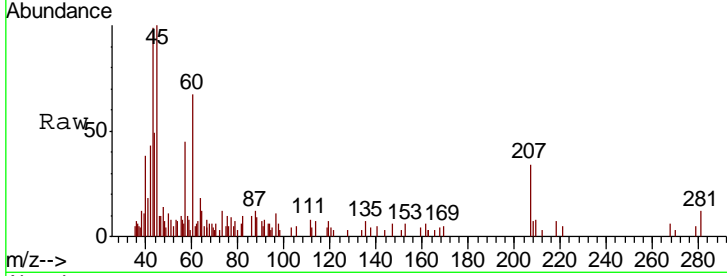




#49
 1,4-Dioxane
 Concen: 1.393 ug/l
 RT: 7.70 min Scan# 1085
 Delta R.T. -0.02 min
 Lab File: VX018036.D
 Acq: 20 Aug 2020 15:42

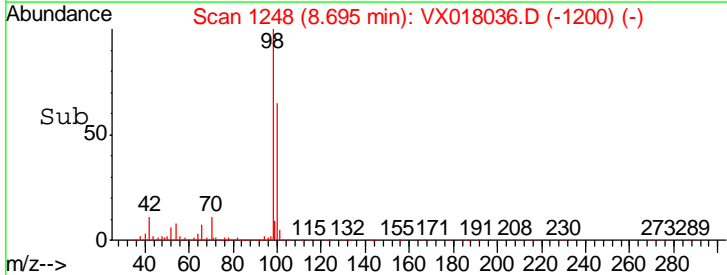
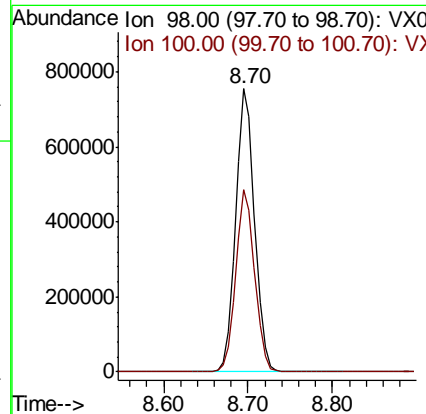
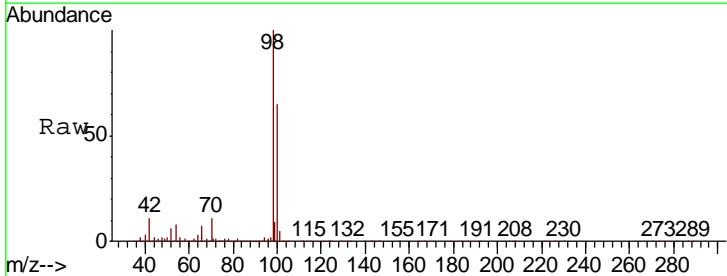
Instrument :
 MSVOA_X
 ClientSampled :
 I-LGC-6DL

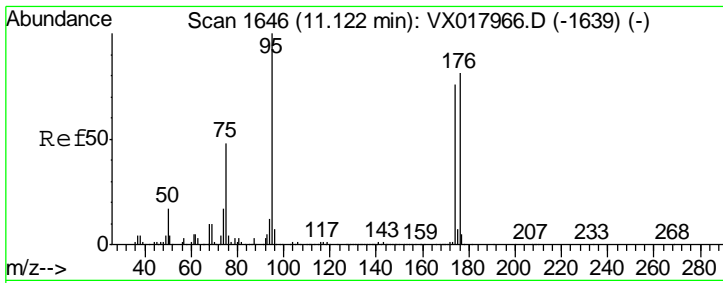
Tgt Ion	Resp	Lower	Upper
88	100		
43	190.2	27.3	40.9#
58	0.0	57.7	86.5#



#50
 Toluene-d8
 Concen: 46.341 ug/l
 RT: 8.70 min Scan# 1248
 Delta R.T. -0.01 min
 Lab File: VX018036.D
 Acq: 20 Aug 2020 15:42

Tgt Ion	Resp	Lower	Upper
98	100		
100	64.2	51.4	77.2

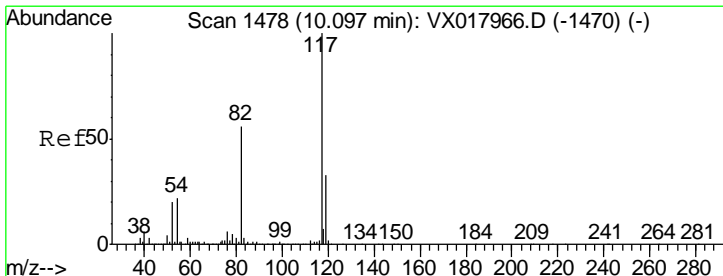
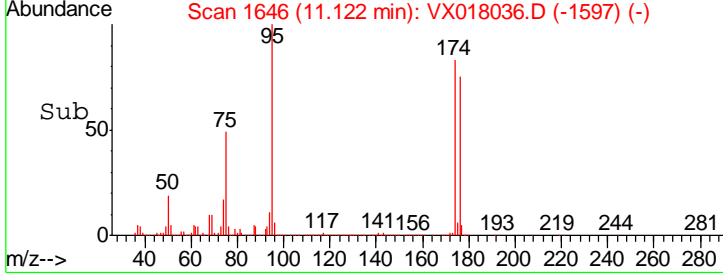
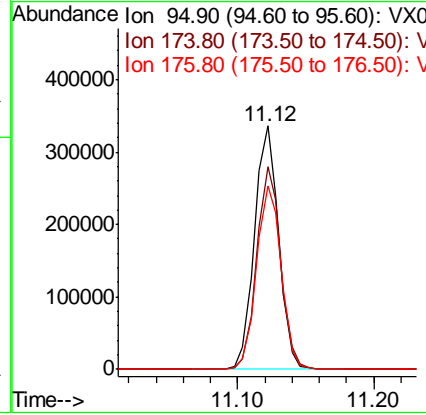
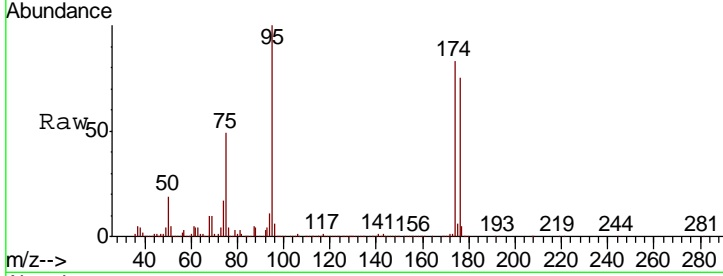




#62
 4-Bromofluorobenzene
 Concen: 45.848 ug/l
 RT: 11.12 min Scan# 1646
 Delta R.T. 0.00 min
 Lab File: VX018036.D
 Acq: 20 Aug 2020 15:42

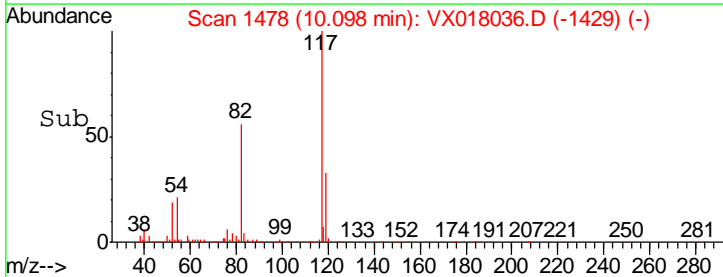
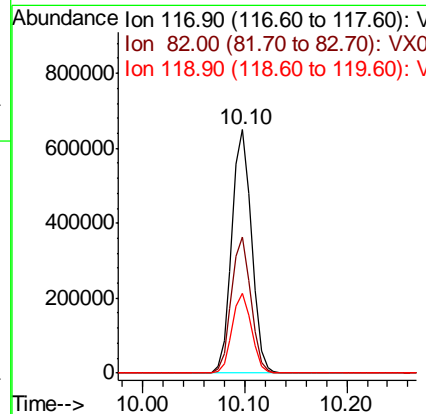
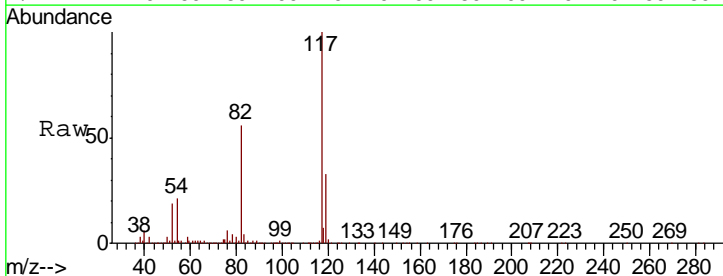
Instrument :
 MSVOA_X
 ClientSampled :
 I-LGC-6DL

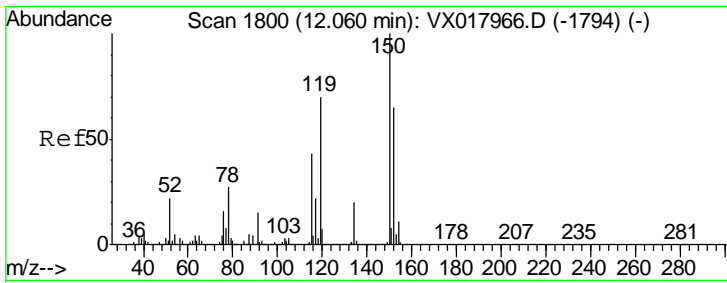
Tgt Ion	Resp	Lower	Upper
95	419185		
174	82.3	0.0	166.0
176	77.4	0.0	161.0



#63
 Chlorobenzene-d5
 Concen: 50.000 ug/l
 RT: 10.10 min Scan# 1478
 Delta R.T. 0.00 min
 Lab File: VX018036.D
 Acq: 20 Aug 2020 15:42

Tgt Ion	Resp	Lower	Upper
117	864960		
82	55.8	44.6	66.8
119	32.5	26.2	39.4

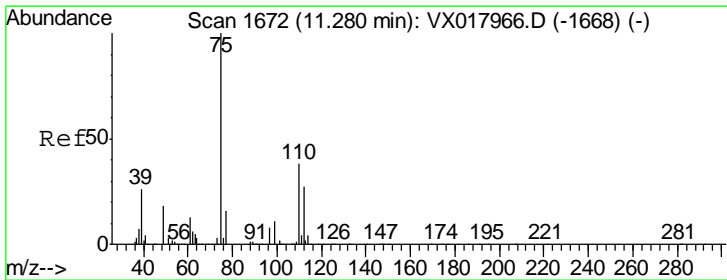
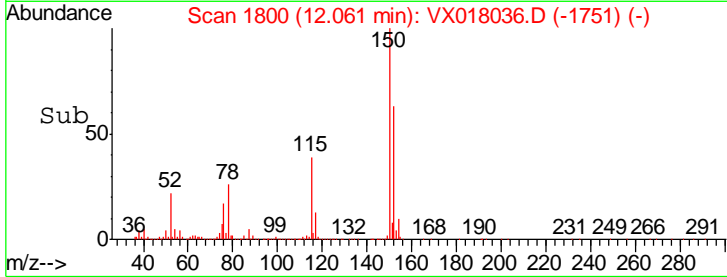
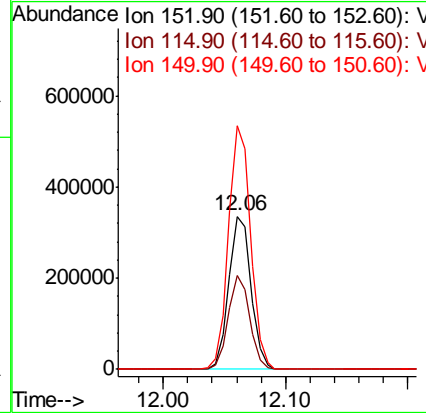
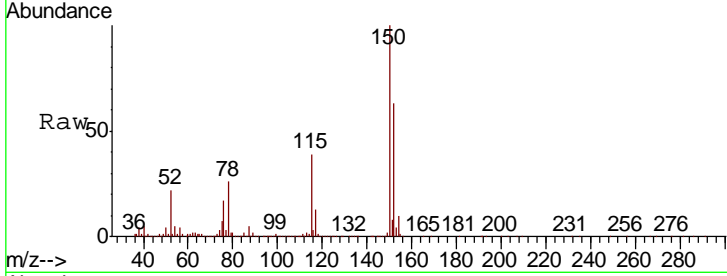




#72
 1,4-Dichlorobenzene-d4
 Concen: 50.000 ug/l
 RT: 12.06 min Scan# 1800
 Delta R.T. 0.00 min
 Lab File: VX018036.D
 Acq: 20 Aug 2020 15:42

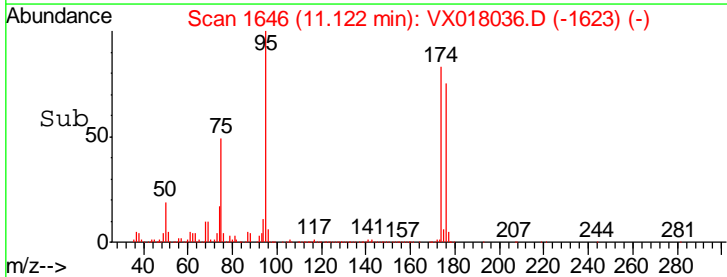
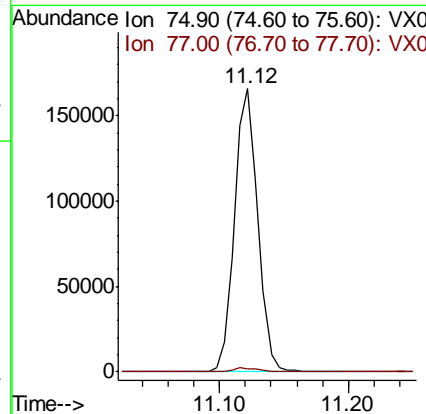
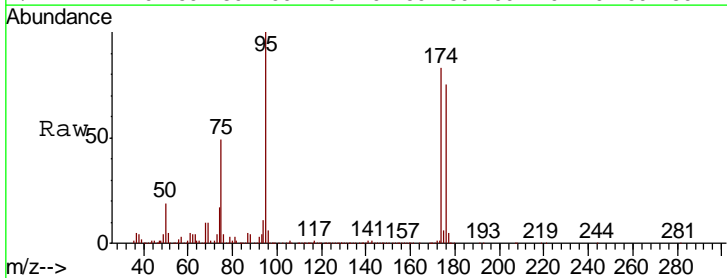
Instrument :
 MSVOA_X
 ClientSampled :
 I-LGC-6DL

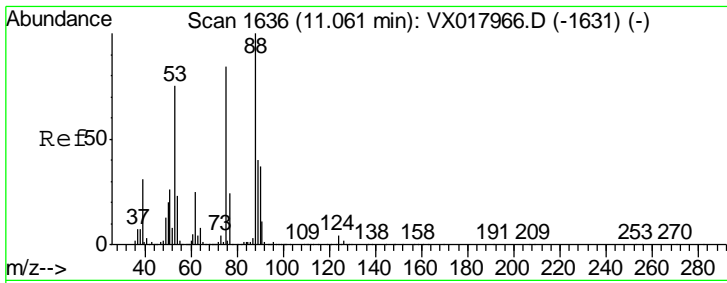
Tgt Ion	Resp	Lower	Upper
152	100		
115	59.8	40.6	121.7
150	158.4	0.0	346.4



#76
 1,2,3-Trichloropropane
 Concen: 23.410 ug/l
 RT: 11.12 min Scan# 1646
 Delta R.T. -0.16 min
 Lab File: VX018036.D
 Acq: 20 Aug 2020 15:42

Tgt Ion	Resp	Lower	Upper
75	100		
77	1.4	21.1	63.1#

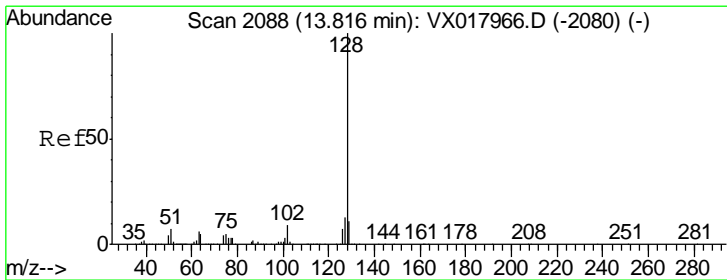
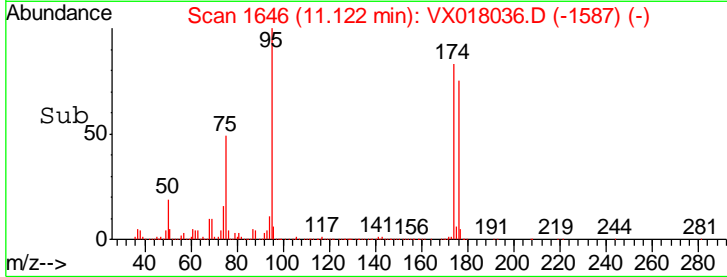
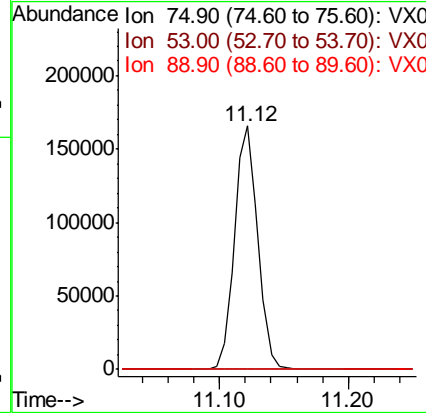
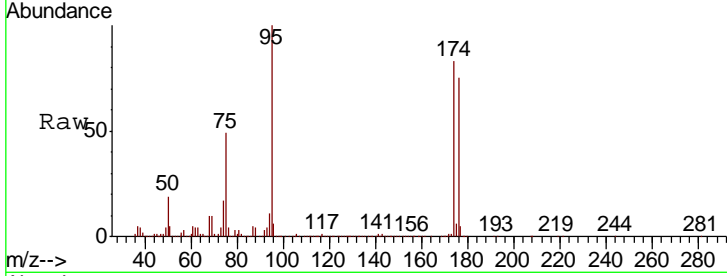




#81
 trans-1,4-Dichloro-2-butene
 Concen: 61.501 ug/l
 RT: 11.12 min Scan# 1646
 Delta R.T. 0.06 min
 Lab File: VX018036.D
 Acq: 20 Aug 2020 15:42

Instrument : MSVOA_X
 ClientSampled : I-LGC-6DL

Tgt Ion	Resp	Lower	Upper
75	100		
53	0.4	75.2	112.8#
89	0.1	38.4	57.6#



#95
 Naphthalene
 Concen: 1.610 ug/l
 RT: 13.82 min Scan# 2088
 Delta R.T. 0.00 min
 Lab File: VX018036.D
 Acq: 20 Aug 2020 15:42

Tgt Ion	Resp	Lower	Upper
128	100		
127	13.9	10.7	16.1
129	11.8	8.6	13.0

