

Data Path : Z:\voasrv\HPCHEM1\MSVOA_X\Data\VX082423\
 Data File : VX037235.D
 Acq On : 24 Aug 2023 23:59
 Operator : JC/MD
 Sample : 04051-10
 Misc : 5.0mL/MSVOA_X/WATER
 ALS Vial : 38 Sample Multiplier: 1

Instrument :
 MSVOA_X
 ClientSampleId :
 RE125D1-20230816

Integration Parameters: RTEINT.P
 Integrator: RTE
 Smoothing : ON Filtering: 5
 Sampling : 1 Min Area: 3 % of largest Peak
 Start Thrs: 0.2 Max Peaks: 100
 Stop Thrs : 0 Peak Location: TOP

If leading or trailing edge < 100 prefer < Baseline drop else tangent >
 Peak separation: 5

Method : Z:\voasrv\HPCHEM1\MSVOA_X\Method\82X081723W.M
 Title : SW846 8260

Signal : TIC: VX037235.D\data.ms

peak #	R.T. min	first scan	max scan	last scan	PK TY	peak height	corr. area	corr. % max.	% of total
1	2.325	196	203	210	rBV3	8663	16155	1.14%	0.282%
2	4.489	545	558	566	rBV	6477	16987	1.20%	0.297%
3	5.385	694	705	719	rBV	88636	257759	18.22%	4.504%
4	5.550	720	732	749	rVB	167234	472887	33.42%	8.262%
5	5.952	789	798	812	rBV	94403	256507	18.13%	4.482%
6	6.757	920	930	950	rBV	240887	581102	41.07%	10.153%
7	7.123	981	990	1006	rBV	658015	1415067	100.00%	24.724%
8	8.647	1234	1240	1249	rBV	496436	776619	54.88%	13.569%
9	9.275	1337	1343	1352	rBV	59168	87582	6.19%	1.530%
10	10.055	1465	1471	1485	rBV	492898	676484	47.81%	11.820%
11	11.079	1634	1639	1655	rBV	426687	523801	37.02%	9.152%
12	12.018	1788	1793	1803	rBV	505571	642470	45.40%	11.225%

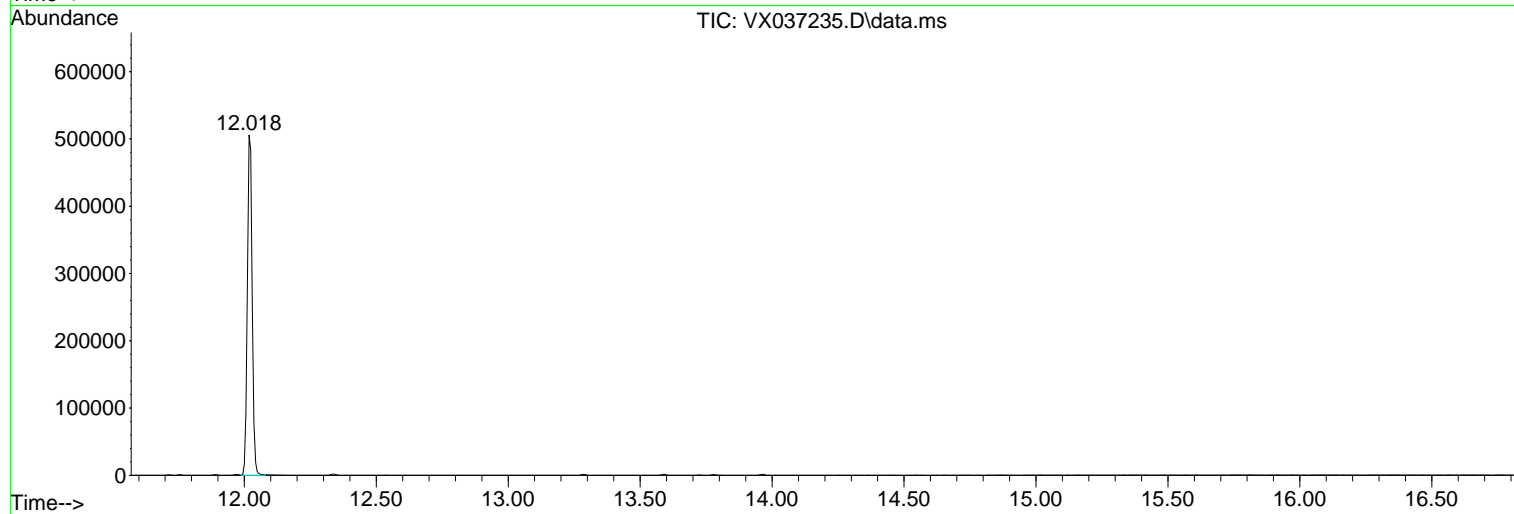
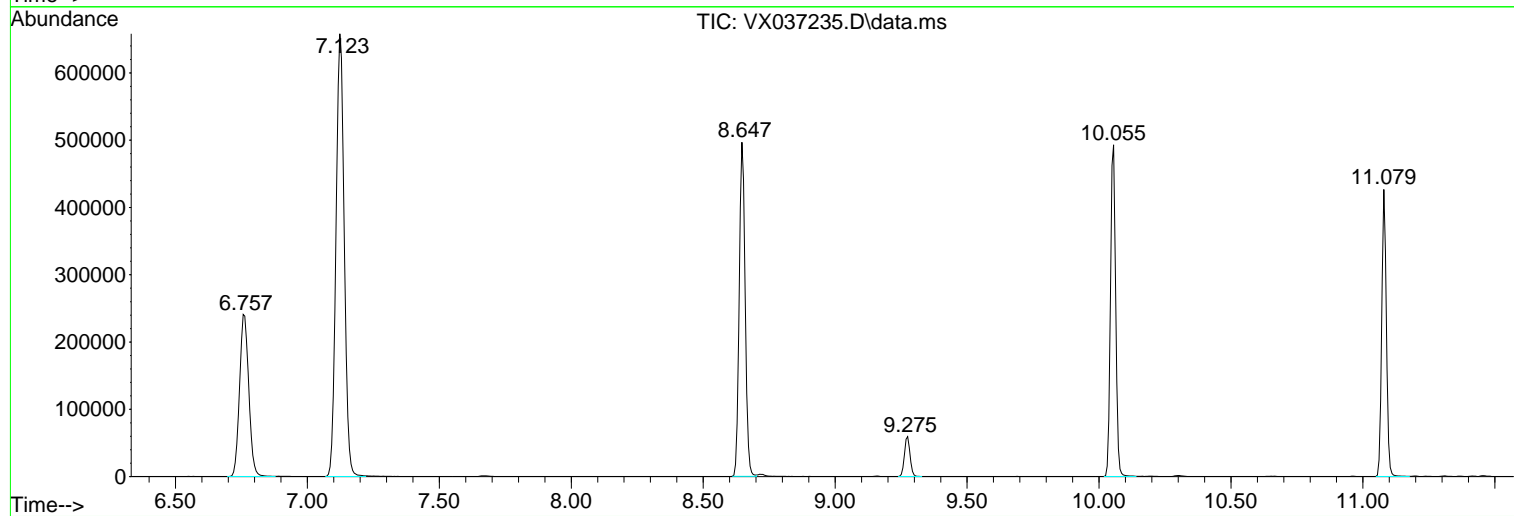
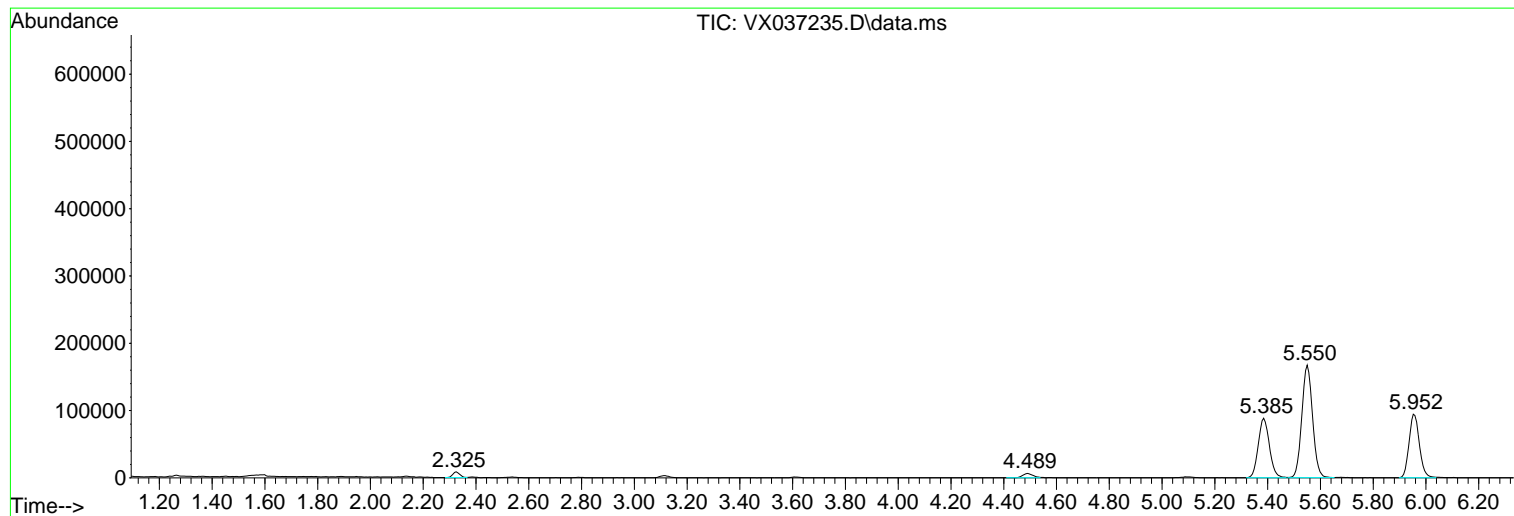
Sum of corrected areas: 5723420

Data Path : Z:\voasrv\HPCHEM1\MSVOA_X\Data\VX082423\
Data File : VX037235.D
Acq On : 24 Aug 2023 23:59
Operator : JC/MD
Sample : 04051-10
Misc : 5.0mL/MSVOA_X/WATER
ALS Vial : 38 Sample Multiplier: 1

Instrument :
MSVOA_X
ClientSampleId :
RE125D1-20230816

Quant Method : Z:\voasrv\HPCHEM1\MSVOA_X\Method\82X081723W.M
Quant Title : SW846 8260

TIC Library : C:\Database\NIST20.L
TIC Integration Parameters: LSCINT.P



Library Search Compound Report

Data Path : Z:\voasrv\HPCHEM1\MSVOA_X\Data\VX082423\
Data File : VX037235.D
Acq On : 24 Aug 2023 23:59
Operator : JC/MD
Sample : 04051-10
Misc : 5.0mL/MSVOA_X/WATER
ALS Vial : 38 Sample Multiplier: 1

Instrument :
MSVOA_X
ClientSampleId :
RE125D1-20230816

Quant Method : Z:\voasrv\HPCHEM1\MSVOA_X\Method\82X081723W.M
Quant Title : SW846 8260

TIC Library : C:\Database\NIST20.L
TIC Integration Parameters: LSCINT.P

No Library Search Compounds Detected

Data Path : Z:\voasrv\HPCHEM1\MSVOA_X\Data\VX082423\
Data File : VX037235.D
Acq On : 24 Aug 2023 23:59
Operator : JC/MD
Sample : 04051-10
Misc : 5.0mL/MSVOA_X/WATER
ALS Vial : 38 Sample Multiplier: 1

Instrument :
MSVOA_X
ClientSampleId :
RE125D1-20230816

Quant Method : Z:\voasrv\HPCHEM1\MSVOA_X\Method\82X081723W.M
Quant Title : SW846 8260

TIC Library : C:\Database\NIST20.L
TIC Integration Parameters: LSCINT.P

TIC Top Hit name	RT	EstConc	Units	Response	--Internal Standard--		
					#	RT	Resp Conc
