

Data Path : Z:\voasrv\HPCHEM1\MSVOA_X\Data\VX082525\
 Data File : VX047512.D
 Acq On : 25 Aug 2025 10:43
 Operator : JC/MD
 Sample : VX0825MBL01
 Misc : 5.00g/10mL/100uL/5.00mL/MSVOA_X/MEOH
 ALS Vial : 3 Sample Multiplier: 1

Instrument :
 MSVOA_X
 ClientSampleId :

Quant Time: Aug 26 00:35:15 2025
 Quant Method : Z:\voasrv\HPCHEM1\MSVOA_X\Method\82X081525W.M
 Quant Title : SW846 8260
 QLast Update : Mon Aug 18 04:18:28 2025
 Response via : Initial Calibration

Compound	R.T.	QIon	Response	Conc	Units	Dev(Min)
Internal Standards						
1) Pentafluorobenzene	5.562	168	171567	50.000	ug/l	0.00
34) 1,4-Difluorobenzene	6.763	114	342741	50.000	ug/l	0.00
63) Chlorobenzene-d5	10.055	117	344408	50.000	ug/l	0.00
72) 1,4-Dichlorobenzene-d4	12.018	152	171869	50.000	ug/l	0.00
System Monitoring Compounds						
33) 1,2-Dichloroethane-d4	5.958	65	143732	59.860	ug/l	0.00
Spiked Amount	50.000	Range 78 - 117	Recovery	=	119.720%#	
35) Dibromofluoromethane	5.391	113	119252	53.610	ug/l	0.00
Spiked Amount	50.000	Range 75 - 124	Recovery	=	107.220%	
50) Toluene-d8	8.647	98	425347	53.498	ug/l	0.00
Spiked Amount	50.000	Range 92 - 112	Recovery	=	107.000%	
62) 4-Bromofluorobenzene	11.079	95	173181	59.027	ug/l	0.00
Spiked Amount	50.000	Range 83 - 123	Recovery	=	118.060%	
Target Compounds						
						Qvalue
3) Chloromethane	1.313	50	896	0.455	ug/l #	82
5) Bromomethane	1.642	94	1298	1.301	ug/l #	3
10) Methyl Iodide	2.477	142	7009	1.930	ug/l #	66
11) Tert butyl alcohol	2.971	59	259	1.240	ug/l #	72
13) Acrolein	2.245	56	653	1.481	ug/l #	44
15) Acrylonitrile	3.081	53	1156	1.145	ug/l #	68
16) Acetone	2.398	43	3156	3.497	ug/l #	80
17) Carbon Disulfide	2.532	76	6226	0.955	ug/l	95
18) Methyl Acetate	2.709	43	529	0.226	ug/l #	63
21) trans-1,2-Dichloroethene	3.117	96	598	0.261	ug/l #	59
29) Tetrahydrofuran	5.074	42	590	0.772	ug/l #	46
36) 1,1-Dichloropropene	5.556	75	14601	4.158	ug/l #	50
38) Carbon Tetrachloride	5.556	117	18533	4.830	ug/l #	14
39) Methylcyclohexane	7.385	83	1112	0.254	ug/l #	93
49) 1,4-Dioxane	7.702	88	36	1.362	ug/l #	23
51) 4-Methyl-2-Pentanone	8.573	43	1397	0.464	ug/l #	66
58) 2-Chloroethyl Vinyl ether	8.287	63	199	8.466	ug/l #	46
59) 2-Hexanone	9.470	43	420	0.201	ug/l	81
64) Tetrachloroethene	9.281	164	598	0.240	ug/l #	74
68) m/p-Xylenes	10.305	106	1128	0.215	ug/l	88
76) 1,2,3-Trichloropropane	11.079	75	90361	28.665	ug/l #	38
81) trans-1,4-Dichloro-2-b...	11.079	75	90361	112.868	ug/l #	7
82) 4-Chlorotoluene	11.457	91	2857	0.250	ug/l	97
85) sec-Butylbenzene	11.890	105	4161	0.304	ug/l	95
86) p-Isopropyltoluene	12.006	119	4125	0.356	ug/l	88
87) 1,3-Dichlorobenzene	11.969	146	1844	0.294	ug/l	94
88) 1,4-Dichlorobenzene	11.969	146	1844	0.286	ug/l	94
89) n-Butylbenzene	12.335	91	6175	0.573	ug/l	94
90) Hexachloroethane	12.536	117	494	0.243	ug/l	99
91) 1,2-Dichlorobenzene	12.341	146	1545	0.259	ug/l	92
92) 1,2-Dibromo-3-Chloropr...	12.945	75	180	0.236	ug/l	84
93) 1,2,4-Trichlorobenzene	13.585	180	3288	0.824	ug/l	98
94) Hexachlorobutadiene	13.725	225	5265	3.705	ug/l	95
95) Naphthalene	13.780	128	10169	0.891	ug/l	97
96) 1,2,3-Trichlorobenzene	13.957	180	3325	0.884	ug/l	97

Data Path : Z:\voasrv\HPCHEM1\MSVOA_X\Data\VX082525\
Data File : VX047512.D
Acq On : 25 Aug 2025 10:43
Operator : JC/MD
Sample : VX0825MBL01
Misc : 5.00g/10mL/100uL/5.00mL/MSVOA_X/MEOH
ALS Vial : 3 Sample Multiplier: 1

Instrument :
MSVOA_X
ClientSampleId :

Quant Time: Aug 26 00:35:15 2025
Quant Method : Z:\voasrv\HPCHEM1\MSVOA_X\Method\82X081525W.M
Quant Title : SW846 8260
QLast Update : Mon Aug 18 04:18:28 2025
Response via : Initial Calibration

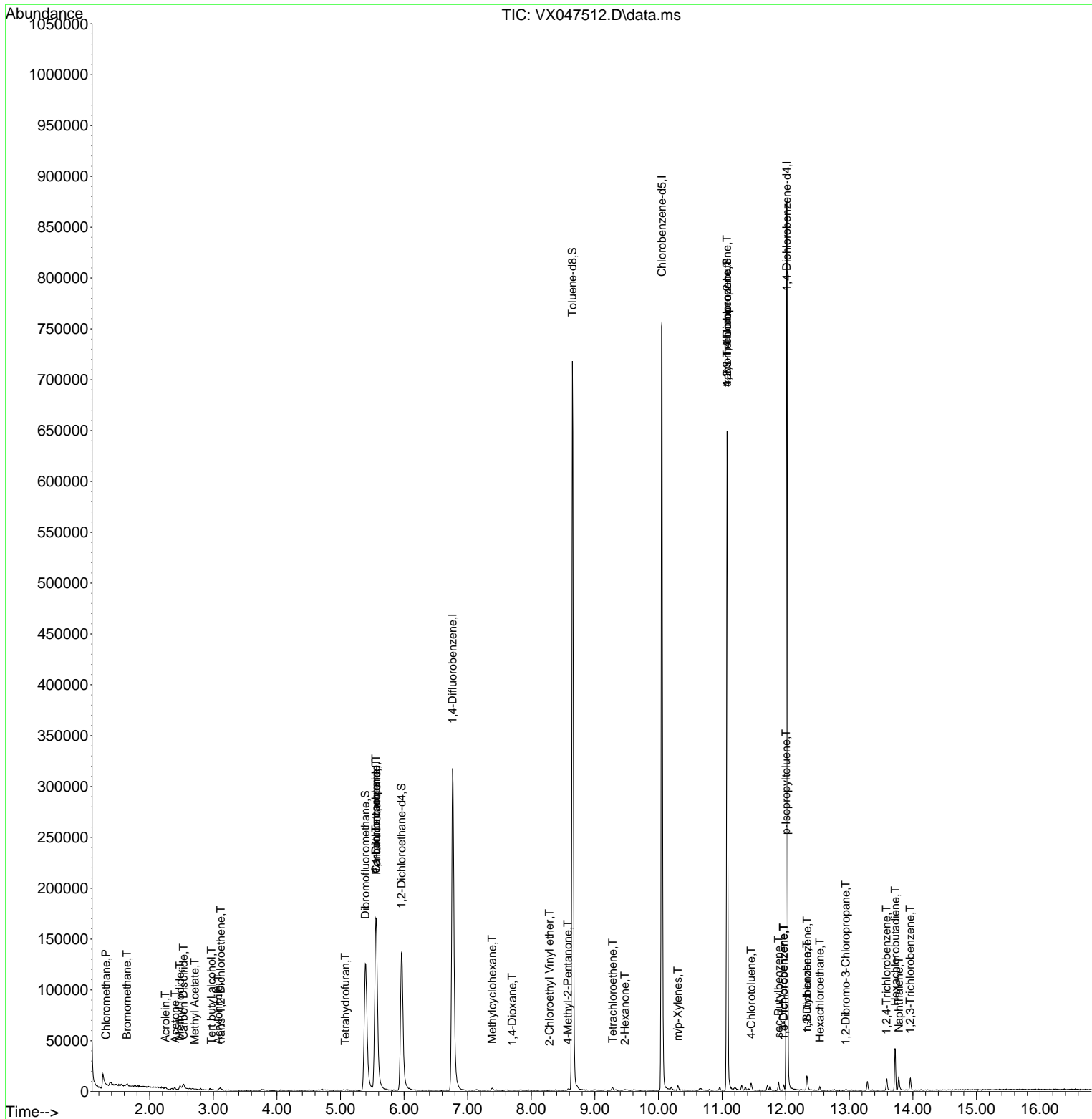
Compound	R.T.	QIon	Response	Conc	Units	Dev(Min)
----------	------	------	----------	------	-------	----------

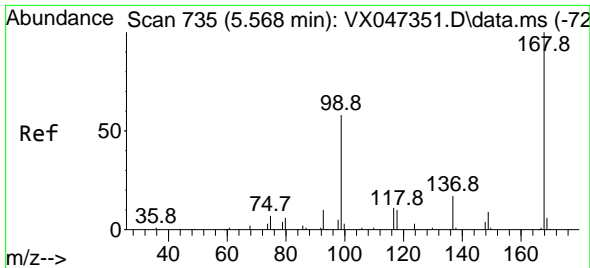
(#) = qualifier out of range (m) = manual integration (+) = signals summed

Data Path : Z:\voasrv\HPCHEM1\MSVOA_X\Data\VX082525\
 Data File : VX047512.D
 Acq On : 25 Aug 2025 10:43
 Operator : JC/MD
 Sample : VX0825MBL01
 Misc : 5.00g/10mL/100uL/5.00mL/MSVOA_X/MEOH
 ALS Vial : 3 Sample Multiplier: 1

Instrument :
 MSVOA_X
 ClientSampleId :

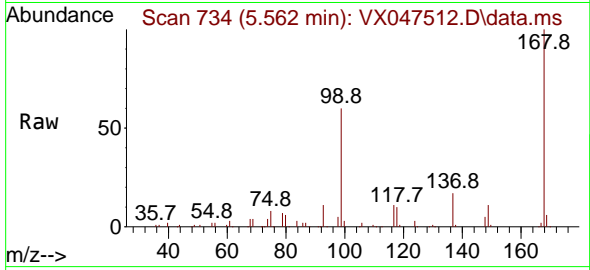
Quant Time: Aug 26 00:35:15 2025
 Quant Method : Z:\voasrv\HPCHEM1\MSVOA_X\Method\82X081525W.M
 Quant Title : SW846 8260
 QLast Update : Mon Aug 18 04:18:28 2025
 Response via : Initial Calibration



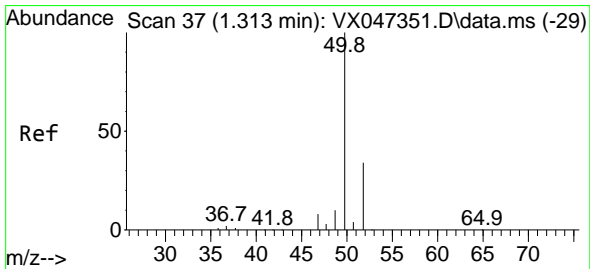
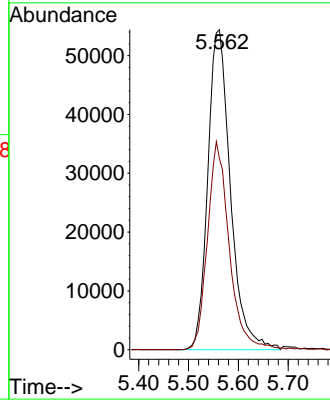
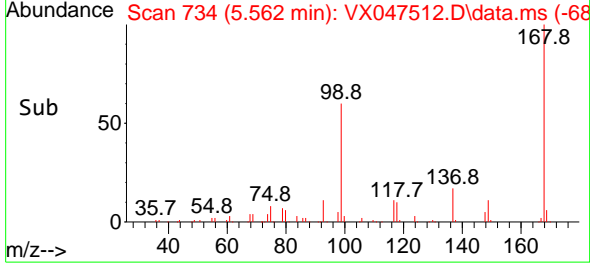


#1
 Pentafluorobenzene
 Concen: 50.000 ug/l
 RT: 5.562 min Scan# 71
 Delta R.T. -0.006 min
 Lab File: VX047512.D
 Acq: 25 Aug 2025 10:43

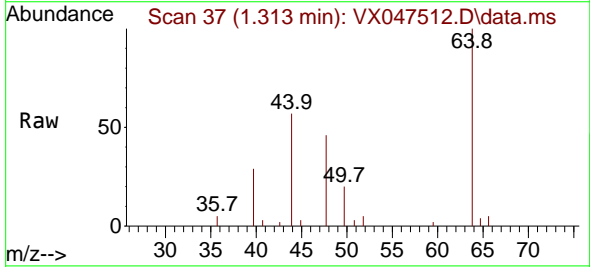
Instrument :
 MSVOA_X
 ClientSampleId :



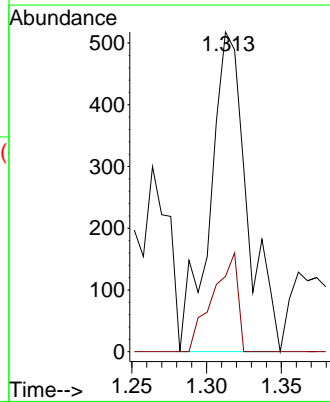
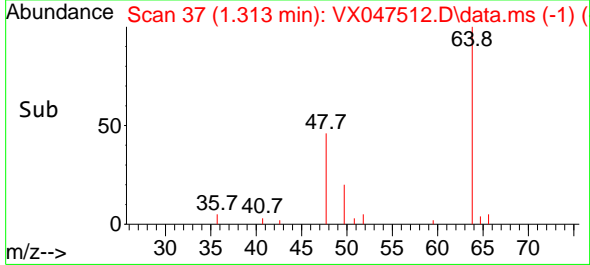
Tgt Ion:168 Resp: 171567
 Ion Ratio Lower Upper
 168 100
 99 59.7 47.9 71.9

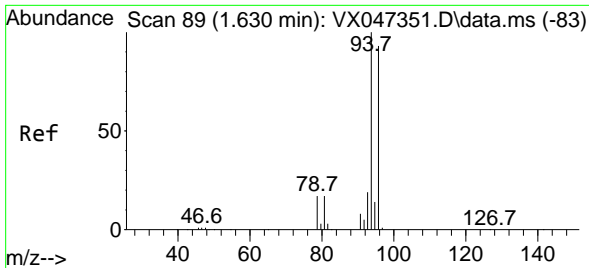


#3
 Chloromethane
 Concen: 0.455 ug/l
 RT: 1.313 min Scan# 37
 Delta R.T. 0.000 min
 Lab File: VX047512.D
 Acq: 25 Aug 2025 10:43



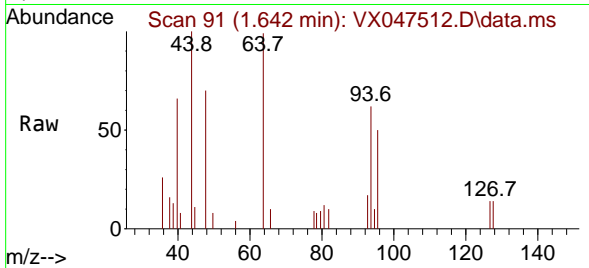
Tgt Ion: 50 Resp: 896
 Ion Ratio Lower Upper
 50 100
 52 23.6 27.0 40.4#



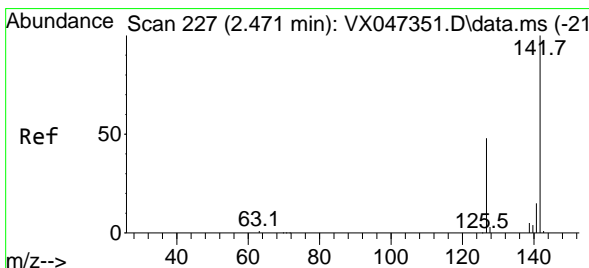
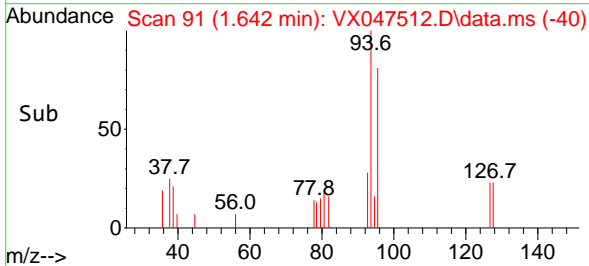
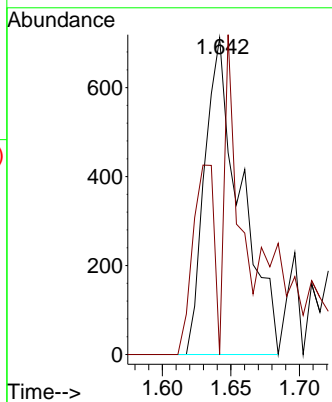


#5
 Bromomethane
 Concen: 1.301 ug/l
 RT: 1.642 min Scan# 91
 Delta R.T. 0.012 min
 Lab File: VX047512.D
 Acq: 25 Aug 2025 10:43

Instrument : MSVOA_X
 ClientSampleId :

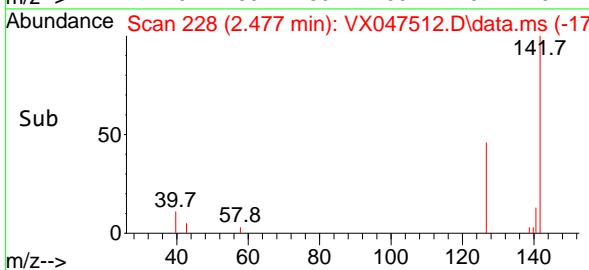
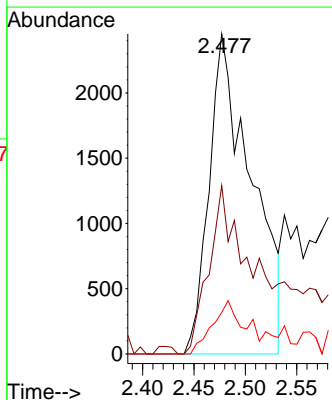
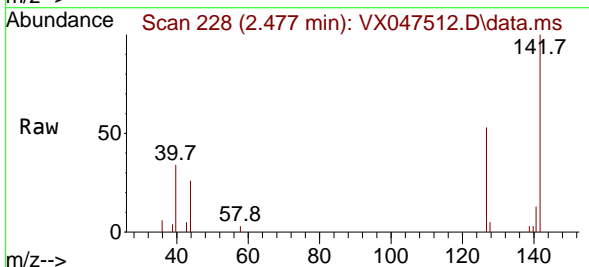


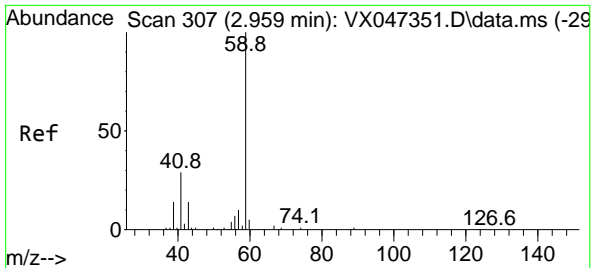
Tgt Ion: 94 Resp: 1298
 Ion Ratio Lower Upper
 94 100
 96 0.0 74.7 112.1#



#10
 Methyl Iodide
 Concen: 1.930 ug/l
 RT: 2.477 min Scan# 228
 Delta R.T. 0.006 min
 Lab File: VX047512.D
 Acq: 25 Aug 2025 10:43

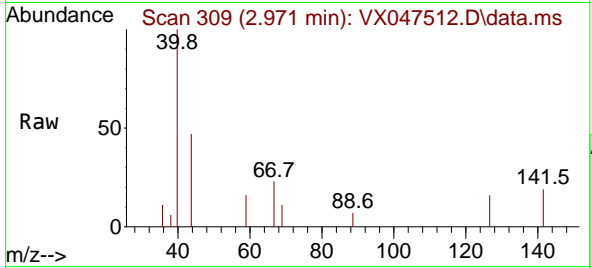
Tgt Ion: 142 Resp: 7009
 Ion Ratio Lower Upper
 142 100
 127 74.2 36.1 54.1#
 141 14.2 11.1 16.7



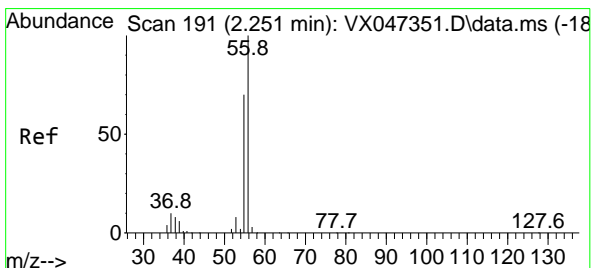
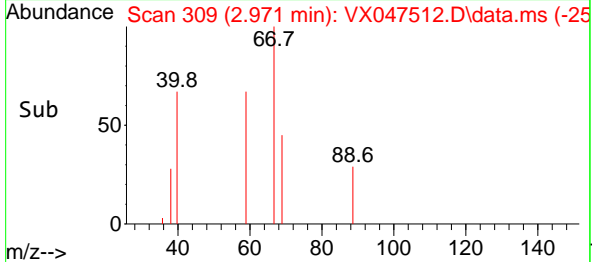
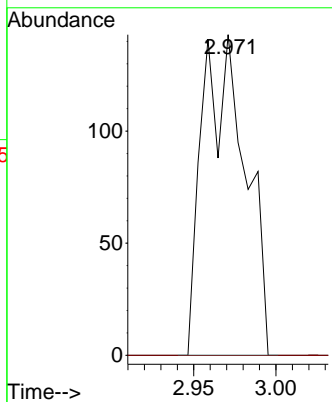


#11
 Tert butyl alcohol
 Concen: 1.240 ug/l
 RT: 2.971 min Scan# 30
 Delta R.T. 0.012 min
 Lab File: VX047512.D
 Acq: 25 Aug 2025 10:43

Instrument :
 MSVOA_X
 ClientSampleId :

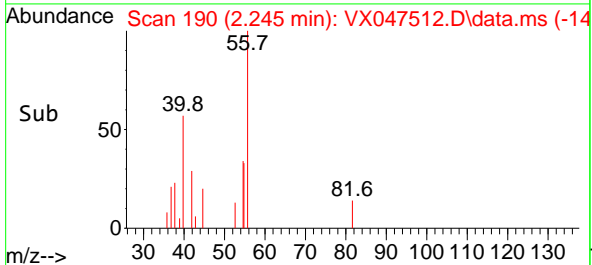
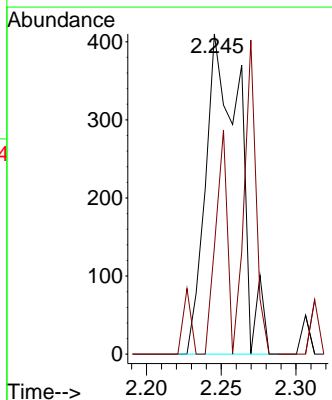
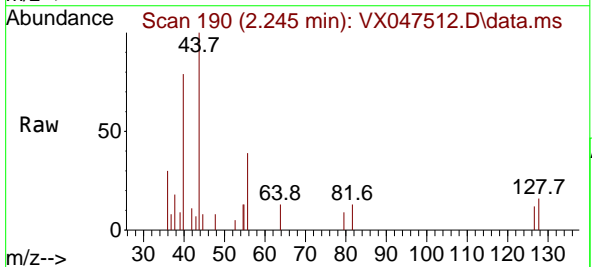


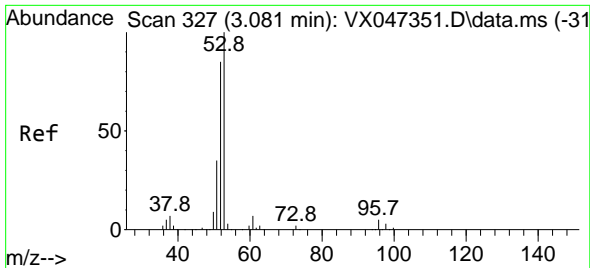
Tgt Ion: 59 Resp: 259
 Ion Ratio Lower Upper
 59 100
 57 0.0 8.3 12.5#



#13
 Acrolein
 Concen: 1.481 ug/l
 RT: 2.245 min Scan# 190
 Delta R.T. -0.006 min
 Lab File: VX047512.D
 Acq: 25 Aug 2025 10:43

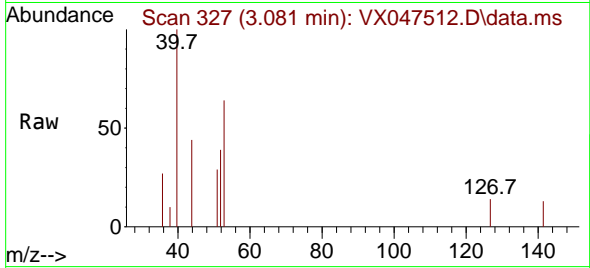
Tgt Ion: 56 Resp: 653
 Ion Ratio Lower Upper
 56 100
 55 23.7 55.5 83.3#



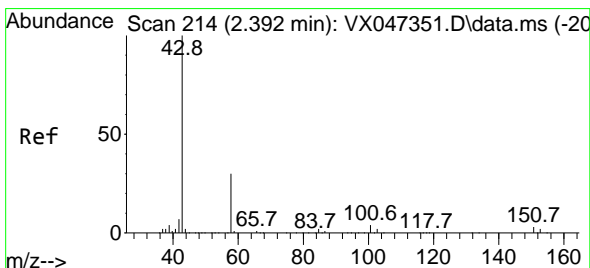
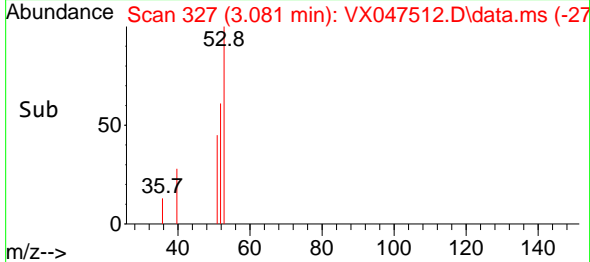
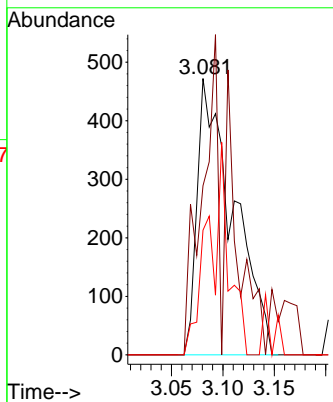


#15
 Acrylonitrile
 Concen: 1.145 ug/l
 RT: 3.081 min Scan# 31
 Delta R.T. 0.000 min
 Lab File: VX047512.D
 Acq: 25 Aug 2025 10:43

Instrument : MSVOA_X
 ClientSampleId :

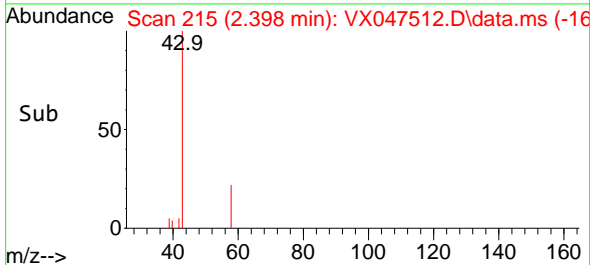
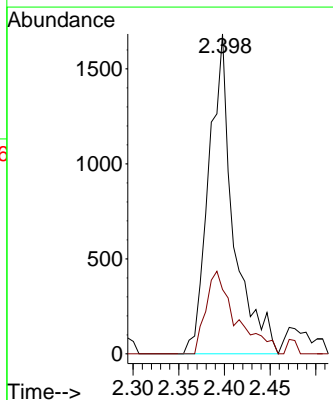
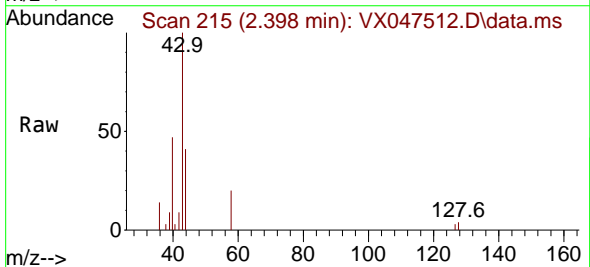


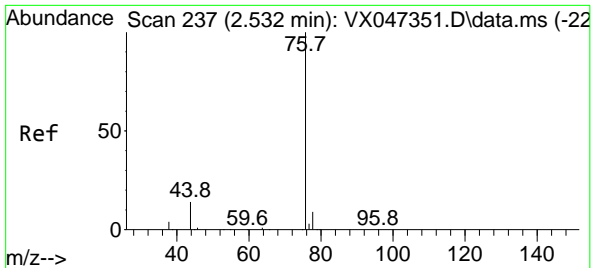
Tgt Ion	Resp	Lower	Upper
53	1156		
53	100		
52	50.4	65.8	98.6#
51	20.9	28.2	42.2#



#16
 Acetone
 Concen: 3.497 ug/l
 RT: 2.398 min Scan# 215
 Delta R.T. 0.006 min
 Lab File: VX047512.D
 Acq: 25 Aug 2025 10:43

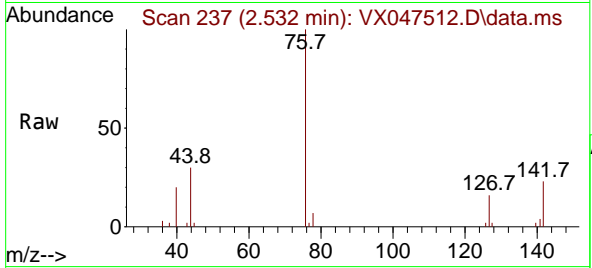
Tgt Ion	Resp	Lower	Upper
43	3156		
43	100		
58	20.1	24.8	37.2#



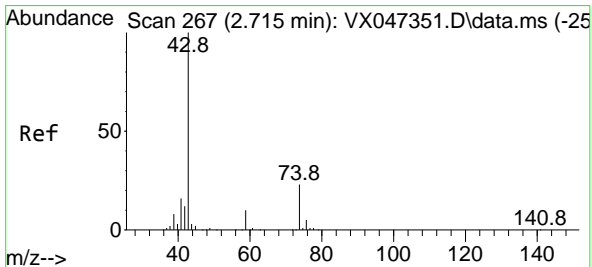
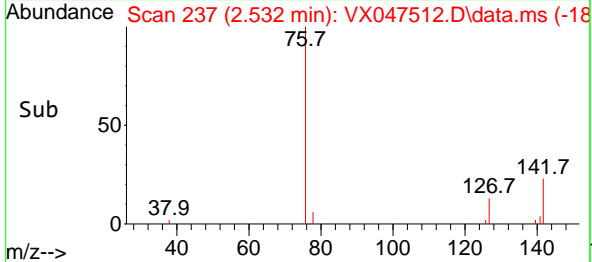
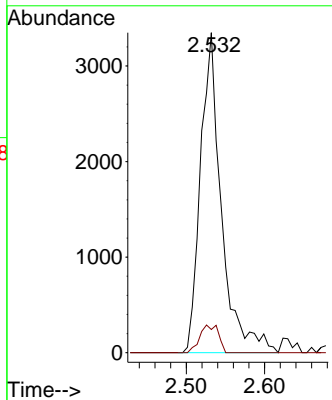


#17
 Carbon Disulfide
 Concen: 0.955 ug/l
 RT: 2.532 min Scan# 21
 Delta R.T. 0.000 min
 Lab File: VX047512.D
 Acq: 25 Aug 2025 10:43

Instrument :
 MSVOA_X
 ClientSampleId :

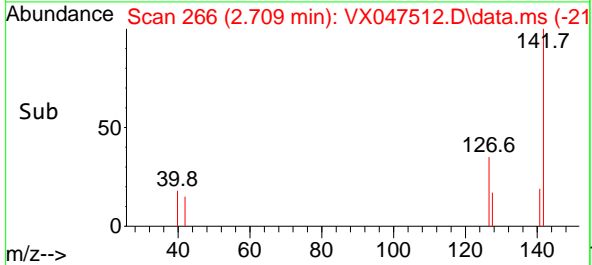
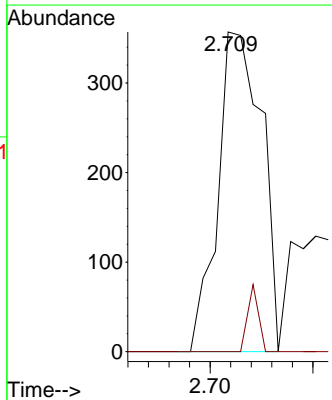
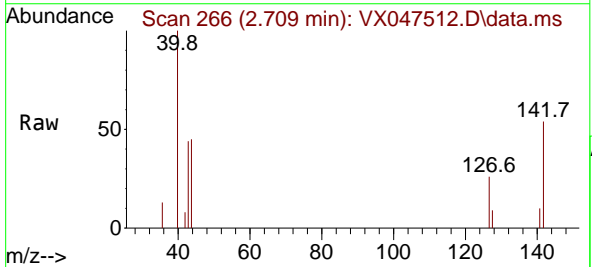


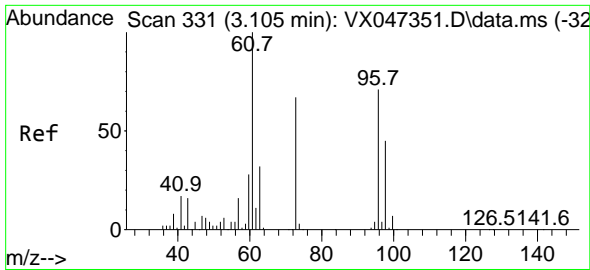
Tgt Ion: 76 Resp: 6226
 Ion Ratio Lower Upper
 76 100
 78 7.3 7.2 10.8



#18
 Methyl Acetate
 Concen: 0.226 ug/l
 RT: 2.709 min Scan# 266
 Delta R.T. -0.006 min
 Lab File: VX047512.D
 Acq: 25 Aug 2025 10:43

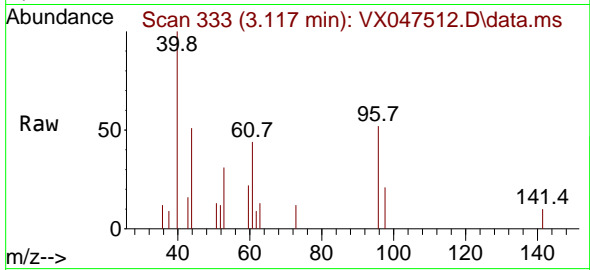
Tgt Ion: 43 Resp: 529
 Ion Ratio Lower Upper
 43 100
 74 5.1 18.4 27.6#



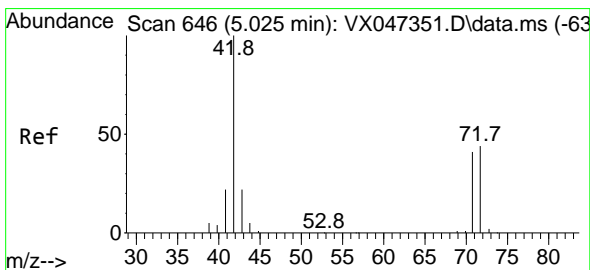
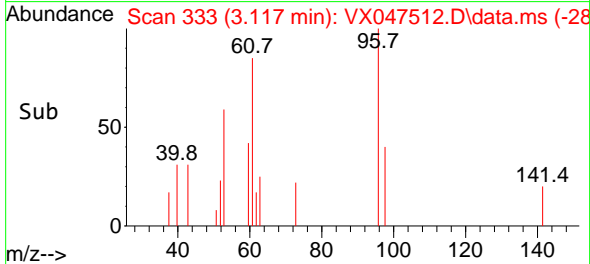
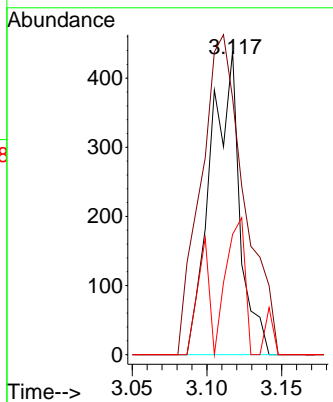


#21
 trans-1,2-Dichloroethene
 Concen: 0.261 ug/l
 RT: 3.117 min Scan# 311
 Delta R.T. 0.012 min
 Lab File: VX047512.D
 Acq: 25 Aug 2025 10:43

Instrument : MSVOA_X
 ClientSampleId :

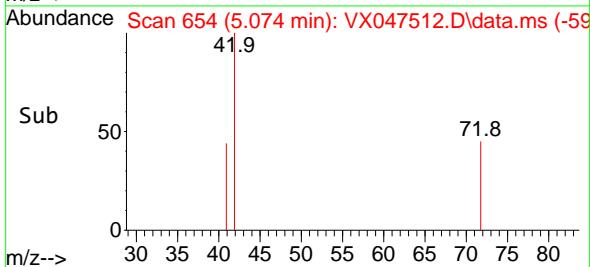
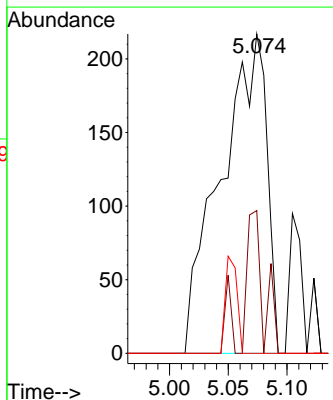
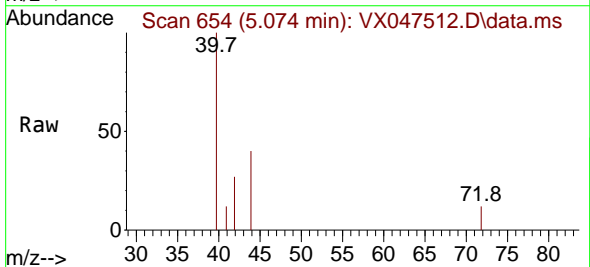


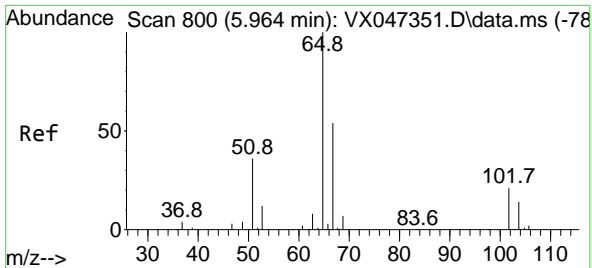
Tgt Ion: 96 Resp: 598
 Ion Ratio Lower Upper
 96 100
 61 84.5 112.6 169.0#
 98 39.6 50.9 76.3#



#29
 Tetrahydrofuran
 Concen: 0.772 ug/l
 RT: 5.074 min Scan# 654
 Delta R.T. 0.049 min
 Lab File: VX047512.D
 Acq: 25 Aug 2025 10:43

Tgt Ion: 42 Resp: 590
 Ion Ratio Lower Upper
 42 100
 72 15.6 34.6 51.8#
 71 0.0 32.6 49.0#

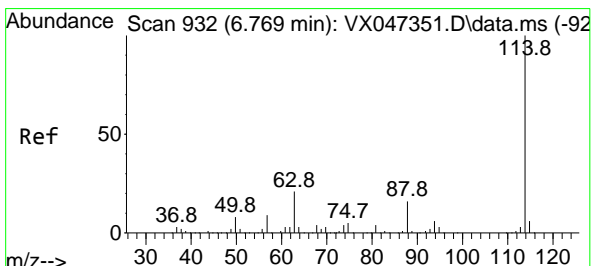
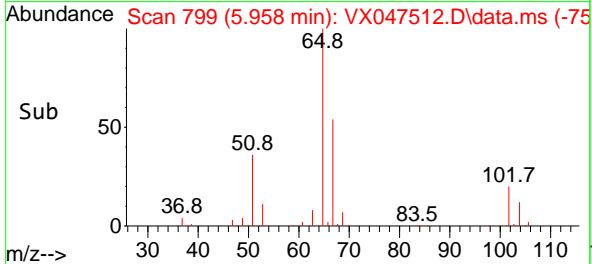
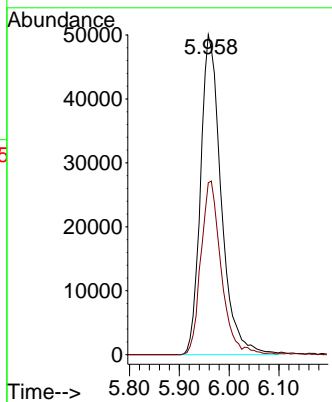
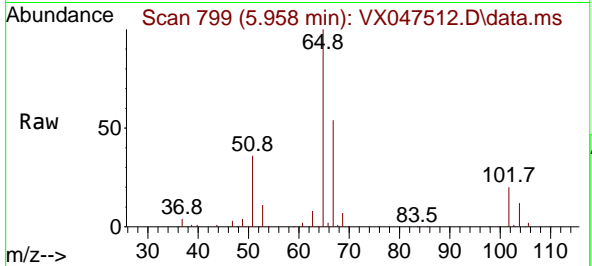




#33
 1,2-Dichloroethane-d4
 Concen: 59.860 ug/l
 RT: 5.958 min Scan# 799
 Delta R.T. -0.006 min
 Lab File: VX047512.D
 Acq: 25 Aug 2025 10:43

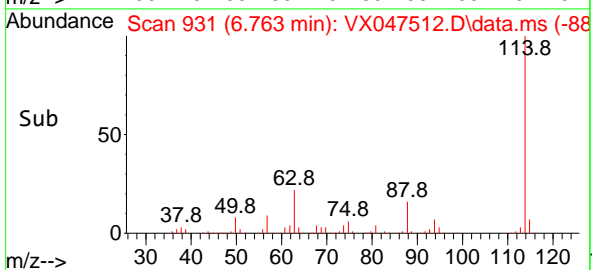
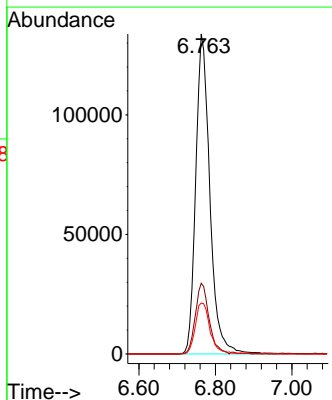
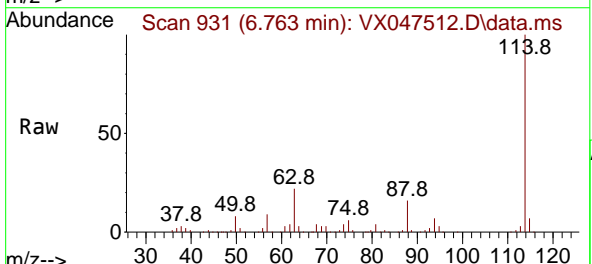
Instrument :
 MSVOA_X
 ClientSampleId :

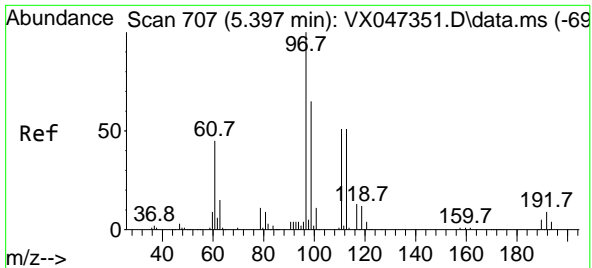
Tgt Ion: 65 Resp: 143732
 Ion Ratio Lower Upper
 65 100
 67 53.4 0.0 106.0



#34
 1,4-Difluorobenzene
 Concen: 50.000 ug/l
 RT: 6.763 min Scan# 931
 Delta R.T. -0.006 min
 Lab File: VX047512.D
 Acq: 25 Aug 2025 10:43

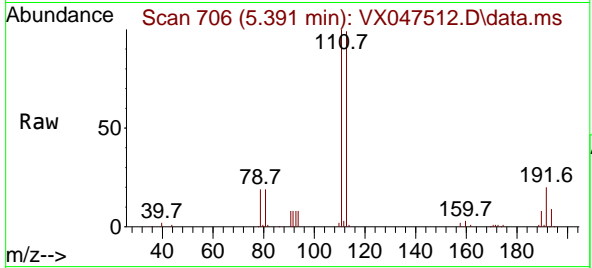
Tgt Ion: 114 Resp: 342741
 Ion Ratio Lower Upper
 114 100
 63 22.1 0.0 42.4
 88 15.9 0.0 33.0



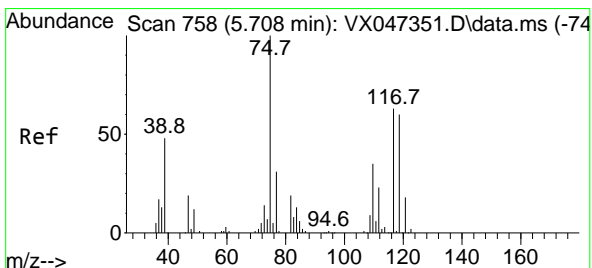
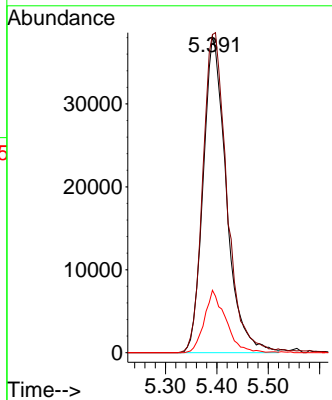
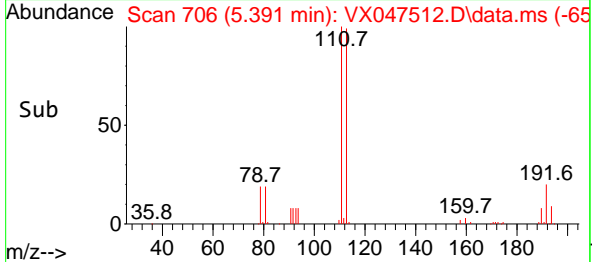


#35
 Dibromofluoromethane
 Concen: 53.610 ug/l
 RT: 5.391 min Scan# 706
 Delta R.T. -0.006 min
 Lab File: VX047512.D
 Acq: 25 Aug 2025 10:43

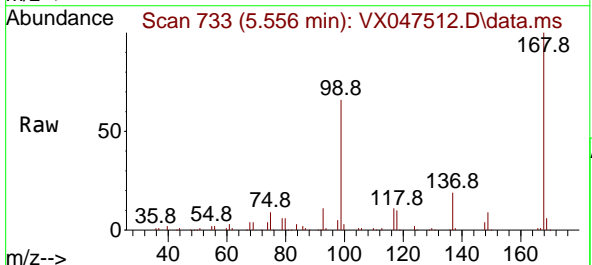
Instrument : MSVOA_X
 ClientSampleId :



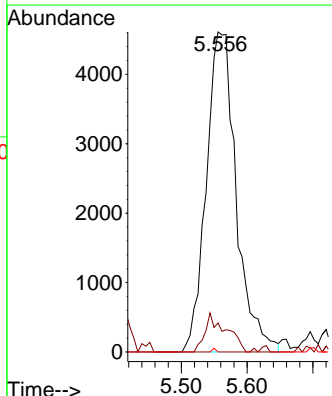
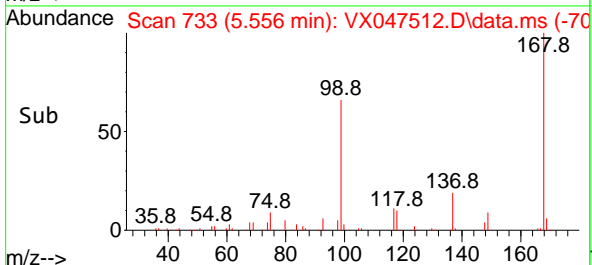
Tgt Ion: 113 Resp: 119252
 Ion Ratio Lower Upper
 113 100
 111 106.0 81.4 122.2
 192 18.3 14.1 21.1

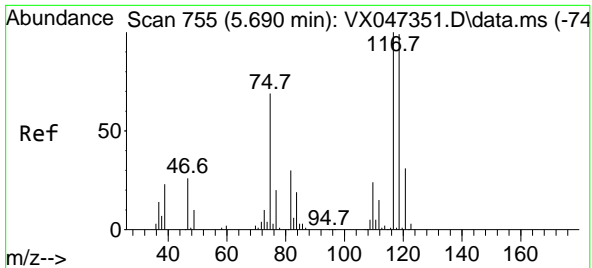


#36
 1,1-Dichloropropene
 Concen: 4.158 ug/l
 RT: 5.556 min Scan# 733
 Delta R.T. -0.152 min
 Lab File: VX047512.D
 Acq: 25 Aug 2025 10:43



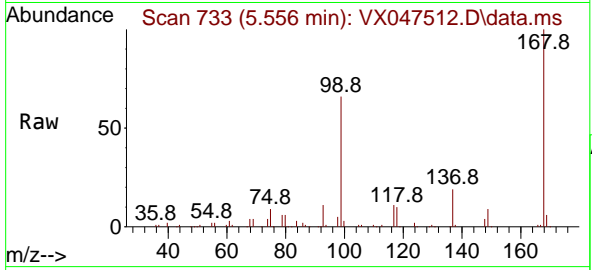
Tgt Ion: 75 Resp: 14601
 Ion Ratio Lower Upper
 75 100
 110 8.6 17.4 52.2#
 77 0.1 24.4 36.6#



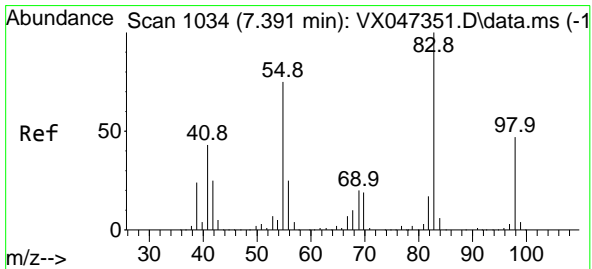
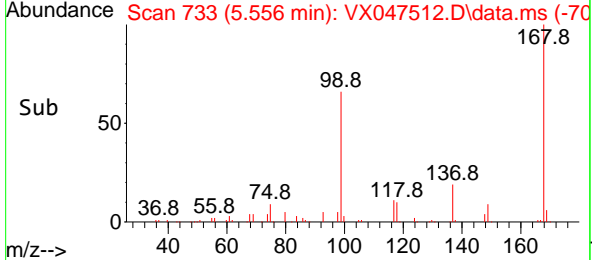
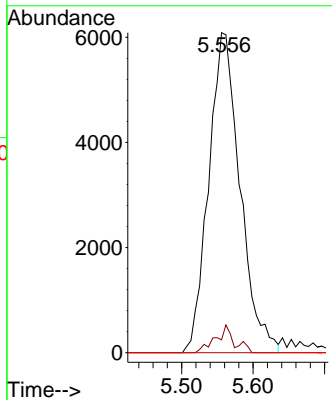


#38
 Carbon Tetrachloride
 Concen: 4.830 ug/l
 RT: 5.556 min Scan# 71
 Delta R.T. -0.134 min
 Lab File: VX047512.D
 Acq: 25 Aug 2025 10:43

Instrument :
 MSVOA_X
 ClientSampleId :

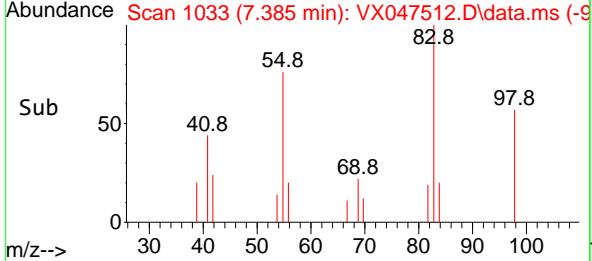
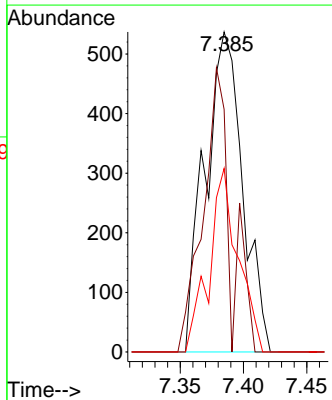
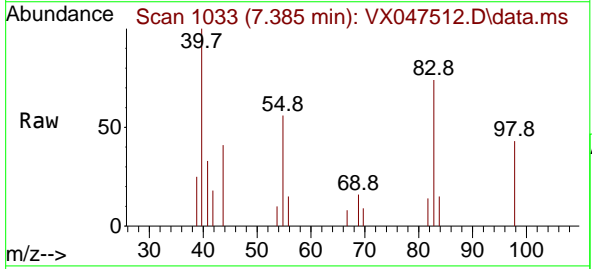


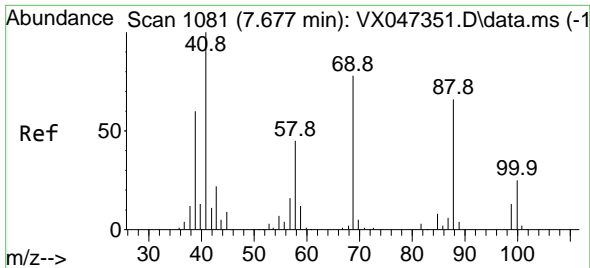
Tgt Ion:117 Resp: 18533
 Ion Ratio Lower Upper
 117 100
 119 4.0 78.5 117.7#
 121 0.0 24.7 37.1#



#39
 Methylcyclohexane
 Concen: 0.254 ug/l
 RT: 7.385 min Scan# 1033
 Delta R.T. -0.006 min
 Lab File: VX047512.D
 Acq: 25 Aug 2025 10:43

Tgt Ion: 83 Resp: 1112
 Ion Ratio Lower Upper
 83 100
 55 75.8 60.0 90.0
 98 57.4 37.2 55.8#

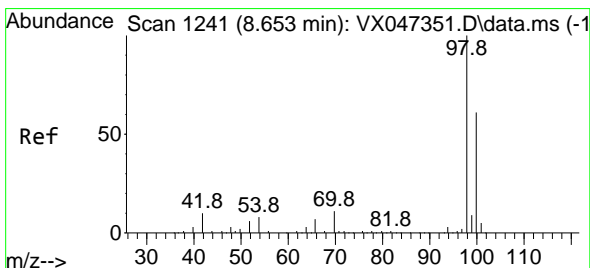
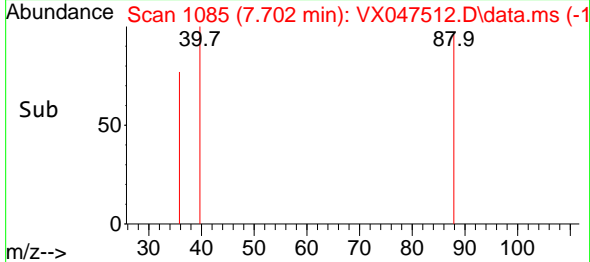
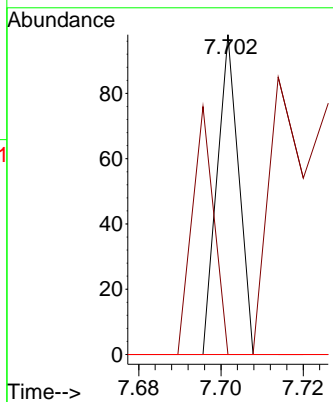
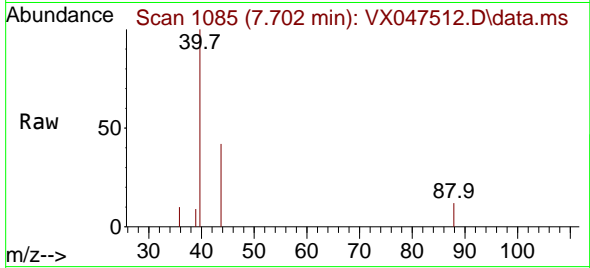




#49
 1,4-Dioxane
 Concen: 1.362 ug/l
 RT: 7.702 min Scan# 1085
 Delta R.T. 0.024 min
 Lab File: VX047512.D
 Acq: 25 Aug 2025 10:43

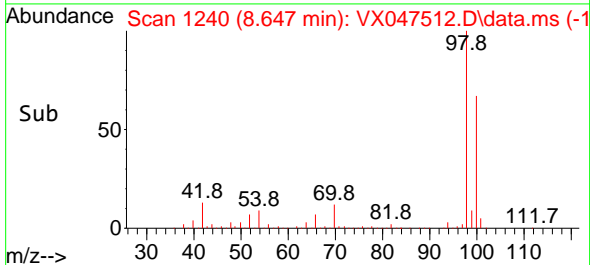
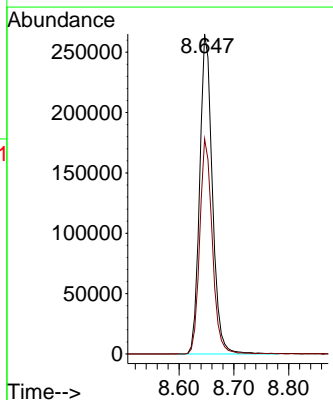
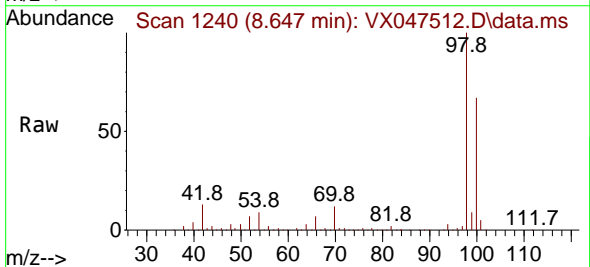
Instrument : MSVOA_X
 ClientSampleId :

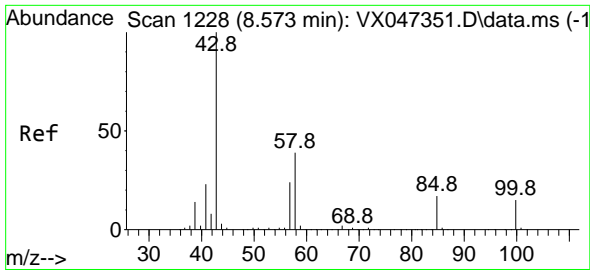
Tgt Ion	Resp	Lower	Upper
88	36		
88	100		
43	77.8	32.4	48.6#
58	0.0	56.9	85.3#



#50
 Toluene-d8
 Concen: 53.498 ug/l
 RT: 8.647 min Scan# 1240
 Delta R.T. -0.006 min
 Lab File: VX047512.D
 Acq: 25 Aug 2025 10:43

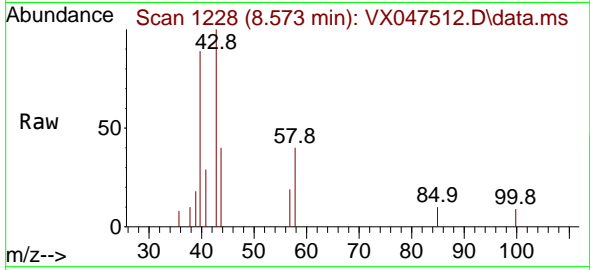
Tgt Ion	Resp	Lower	Upper
98	425347		
98	100		
100	66.5	53.9	80.9



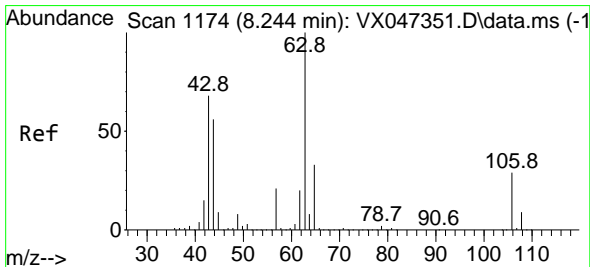
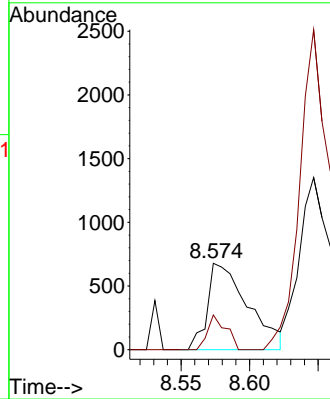
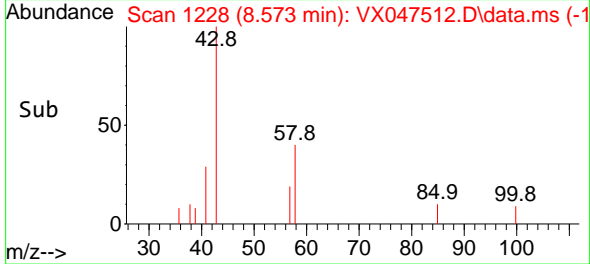


#51
 4-Methyl-2-Pentanone
 Concen: 0.464 ug/l
 RT: 8.573 min Scan# 1181
 Delta R.T. 0.000 min
 Lab File: VX047512.D
 Acq: 25 Aug 2025 10:43

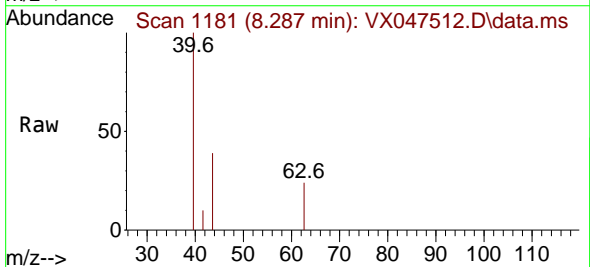
Instrument : MSVOA_X
 ClientSampleId :



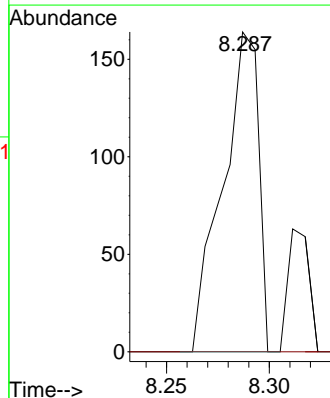
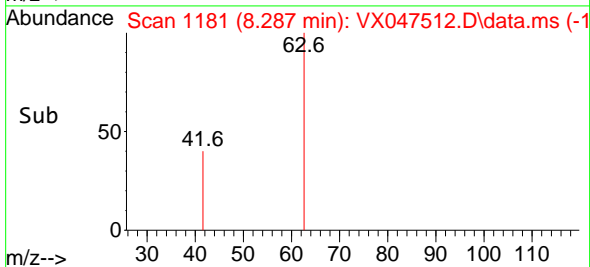
Tgt Ion: 43 Resp: 1397
 Ion Ratio Lower Upper
 43 100
 58 18.3 31.2 46.8#

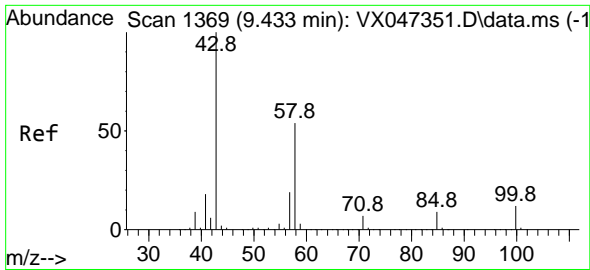


#58
 2-Chloroethyl Vinyl ether
 Concen: 8.466 ug/l
 RT: 8.287 min Scan# 1181
 Delta R.T. 0.043 min
 Lab File: VX047512.D
 Acq: 25 Aug 2025 10:43



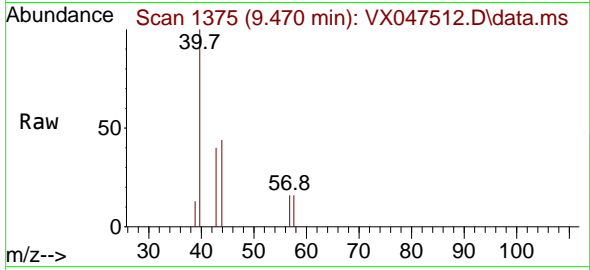
Tgt Ion: 63 Resp: 199
 Ion Ratio Lower Upper
 63 100
 106 0.0 22.8 34.2#



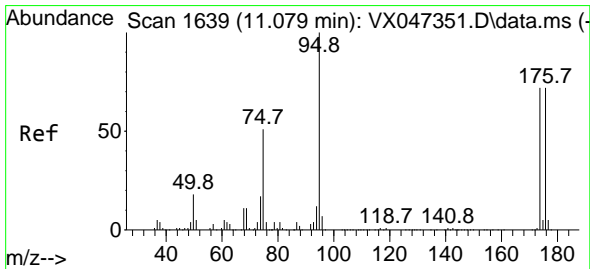
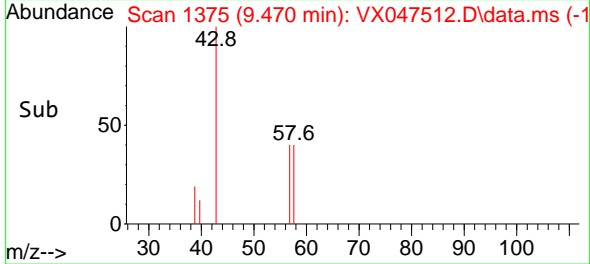
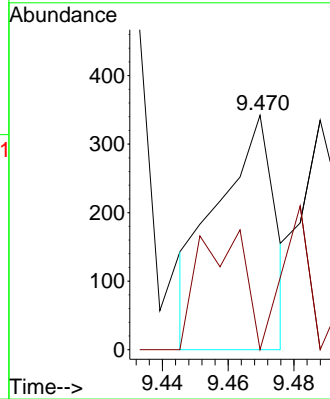


#59
 2-Hexanone
 Concen: 0.201 ug/l
 RT: 9.470 min Scan# 11
 Delta R.T. 0.037 min
 Lab File: VX047512.D
 Acq: 25 Aug 2025 10:43

Instrument :
 MSVOA_X
 ClientSampleId :

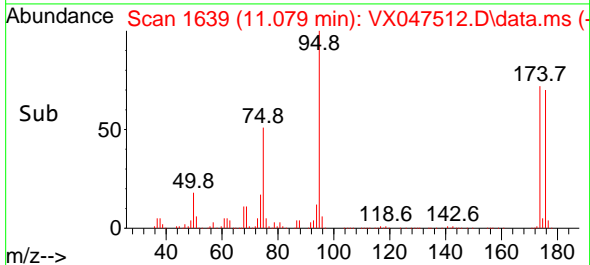
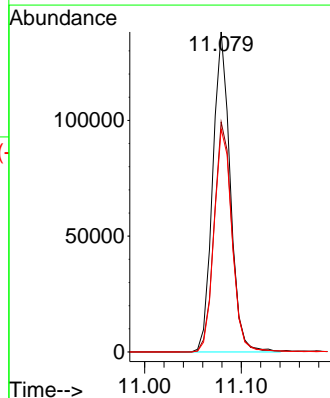
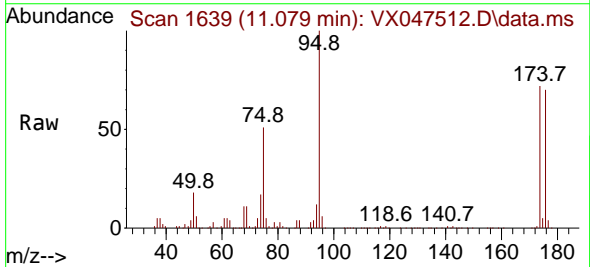


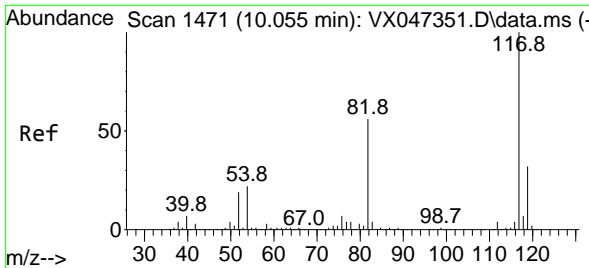
Tgt Ion: 43 Resp: 420
 Ion Ratio Lower Upper
 43 100
 58 40.2 26.9 80.7



#62
 4-Bromofluorobenzene
 Concen: 59.027 ug/l
 RT: 11.079 min Scan# 1639
 Delta R.T. 0.000 min
 Lab File: VX047512.D
 Acq: 25 Aug 2025 10:43

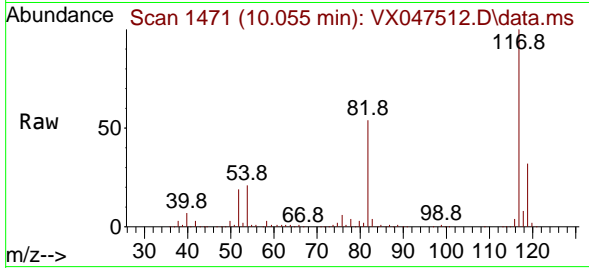
Tgt Ion: 95 Resp: 173181
 Ion Ratio Lower Upper
 95 100
 174 74.0 0.0 148.0
 176 71.8 0.0 145.4





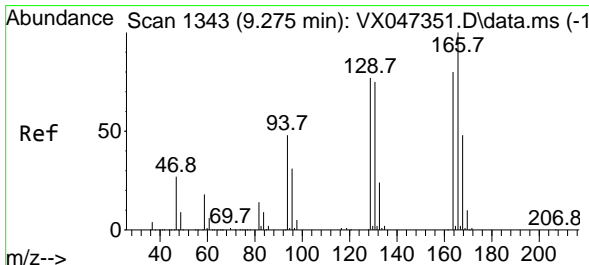
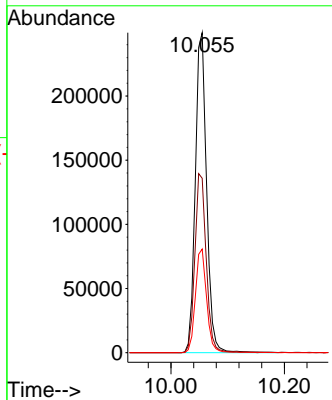
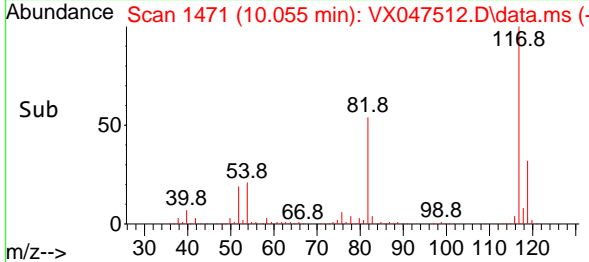
#63
 Chlorobenzene-d5
 Concen: 50.000 ug/l
 RT: 10.055 min Scan# 14
 Delta R.T. 0.000 min
 Lab File: VX047512.D
 Acq: 25 Aug 2025 10:43

Instrument :
 MSVOA_X
 ClientSampleId :

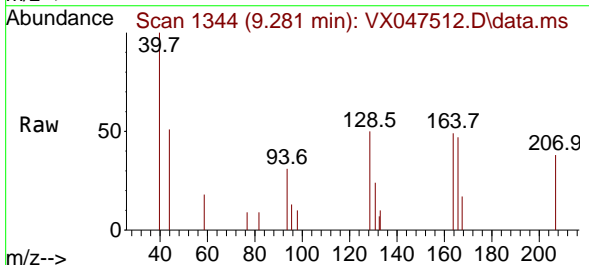


Tgt Ion:117 Resp: 344408

Ion	Ratio	Lower	Upper
117	100		
82	54.5	45.0	67.4
119	32.4	25.8	38.8

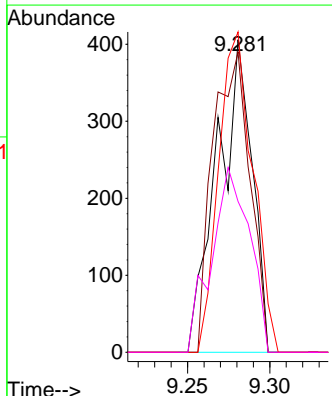
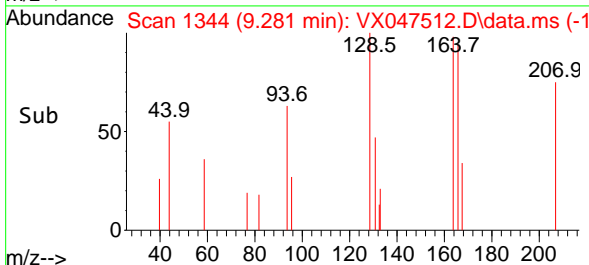


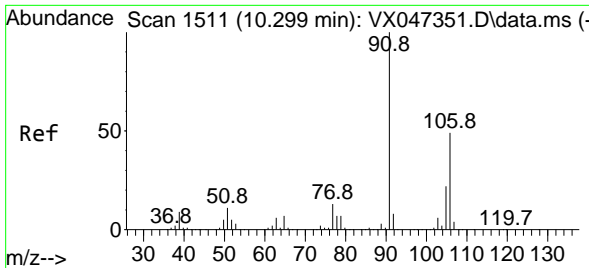
#64
 Tetrachloroethene
 Concen: 0.240 ug/l
 RT: 9.281 min Scan# 1344
 Delta R.T. 0.006 min
 Lab File: VX047512.D
 Acq: 25 Aug 2025 10:43



Tgt Ion:164 Resp: 598

Ion	Ratio	Lower	Upper
164	100		
166	96.1	100.3	150.5#
129	102.5	77.7	116.5
131	48.3	74.8	112.2#

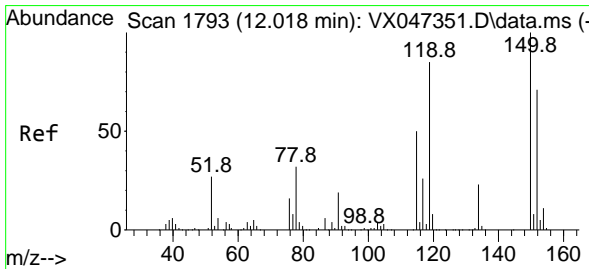
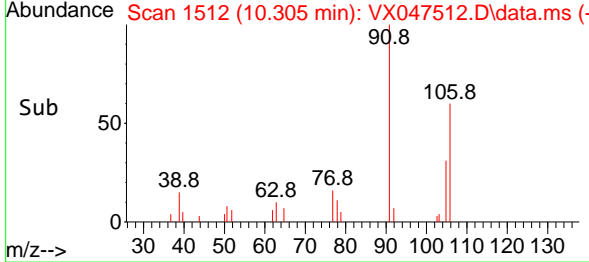
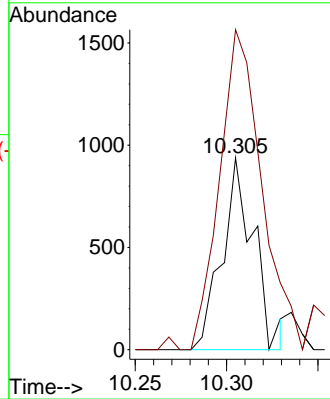
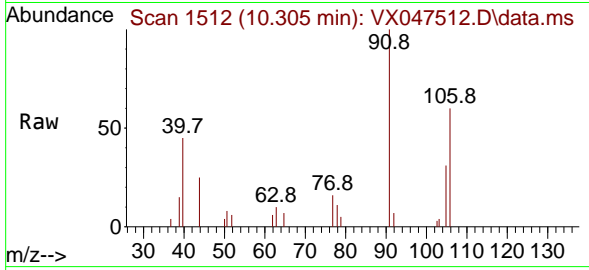




#68
 m/p-Xylenes
 Concen: 0.215 ug/l
 RT: 10.305 min Scan# 11
 Delta R.T. 0.006 min
 Lab File: VX047512.D
 Acq: 25 Aug 2025 10:43

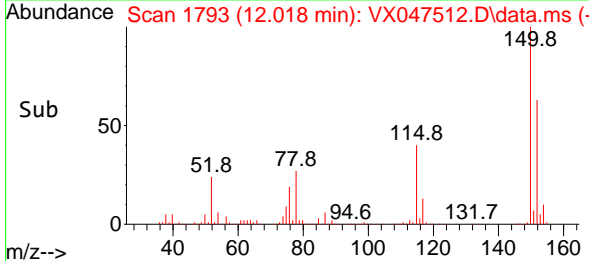
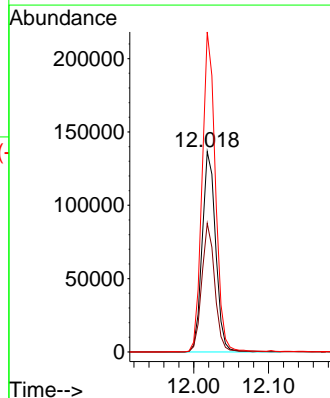
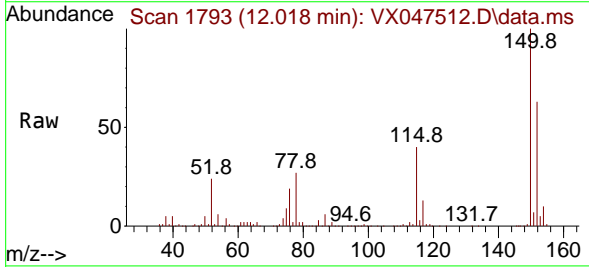
Instrument :
 MSVOA_X
 ClientSampleId :

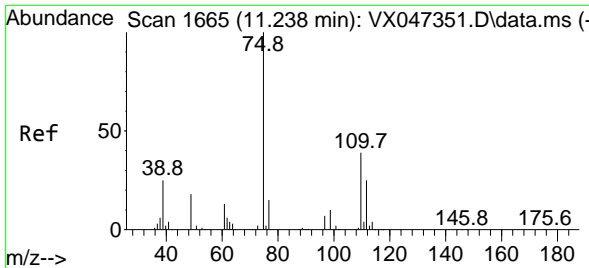
Tgt Ion:106 Resp: 1128
 Ion Ratio Lower Upper
 106 100
 91 224.2 164.7 247.1



#72
 1,4-Dichlorobenzene-d4
 Concen: 50.000 ug/l
 RT: 12.018 min Scan# 1793
 Delta R.T. 0.000 min
 Lab File: VX047512.D
 Acq: 25 Aug 2025 10:43

Tgt Ion:152 Resp: 171869
 Ion Ratio Lower Upper
 152 100
 115 62.0 44.6 133.8
 150 156.5 0.0 349.8

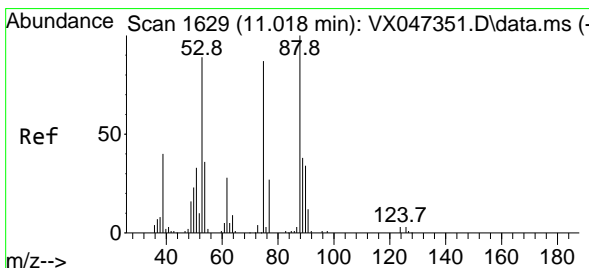
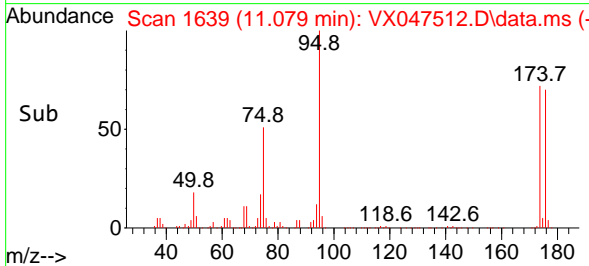
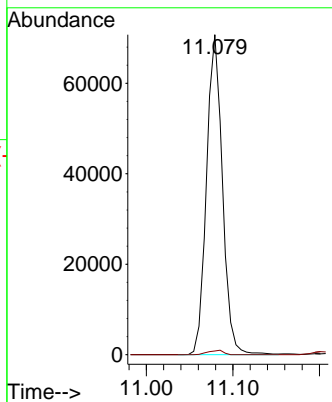
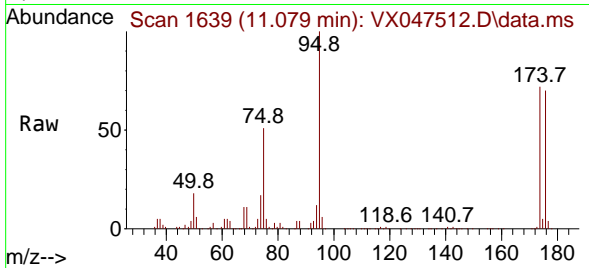




#76
 1,2,3-Trichloropropane
 Concen: 28.665 ug/l
 RT: 11.079 min Scan# 1639
 Delta R.T. -0.159 min
 Lab File: VX047512.D
 Acq: 25 Aug 2025 10:43

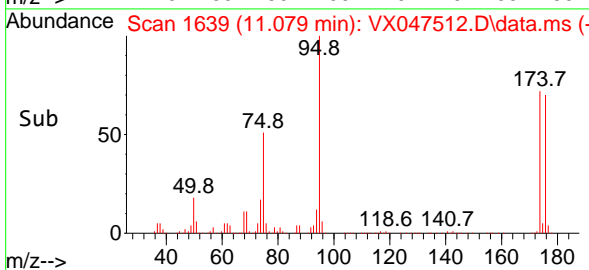
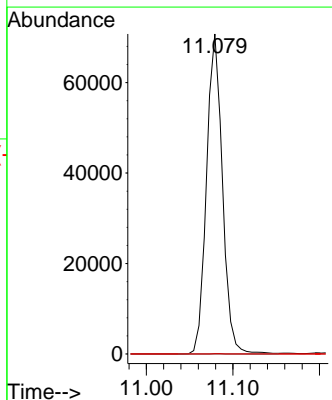
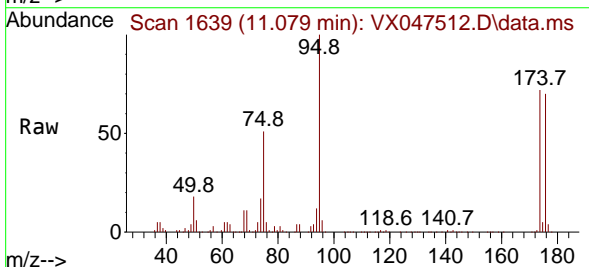
Instrument : MSVOA_X
 ClientSampleId :

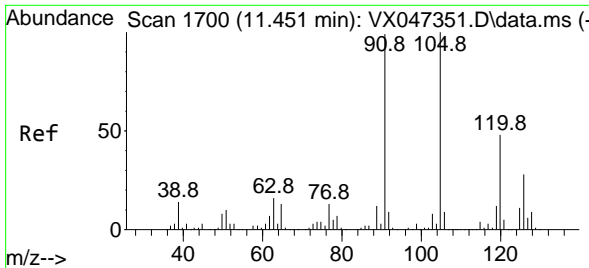
Tgt Ion: 75 Resp: 90361
 Ion Ratio Lower Upper
 75 100
 77 1.3 19.4 58.2#



#81
 trans-1,4-Dichloro-2-butene
 Concen: 112.868 ug/l
 RT: 11.079 min Scan# 1639
 Delta R.T. 0.061 min
 Lab File: VX047512.D
 Acq: 25 Aug 2025 10:43

Tgt Ion: 75 Resp: 90361
 Ion Ratio Lower Upper
 75 100
 53 0.1 85.2 127.8#
 89 0.0 36.7 55.1#

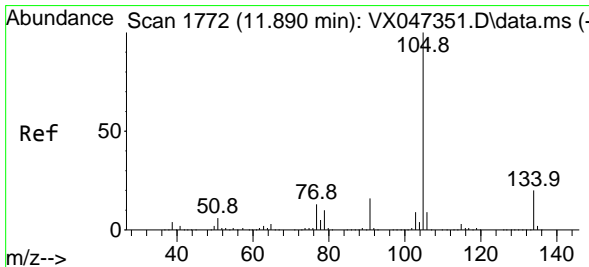
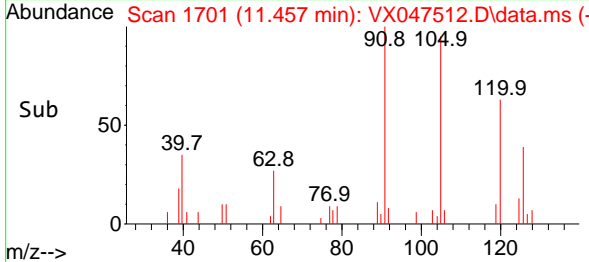
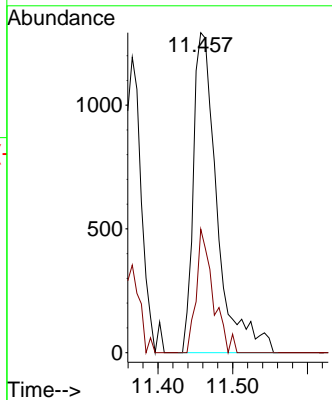
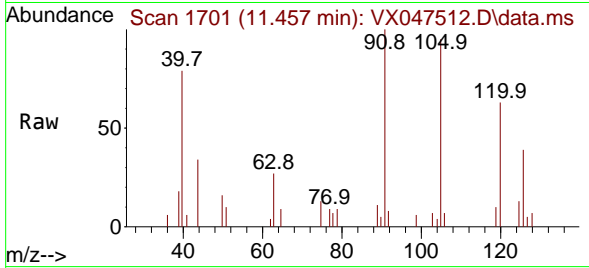




#82
 4-Chlorotoluene
 Concen: 0.250 ug/l
 RT: 11.457 min Scan# 1701
 Delta R.T. 0.006 min
 Lab File: VX047512.D
 Acq: 25 Aug 2025 10:43

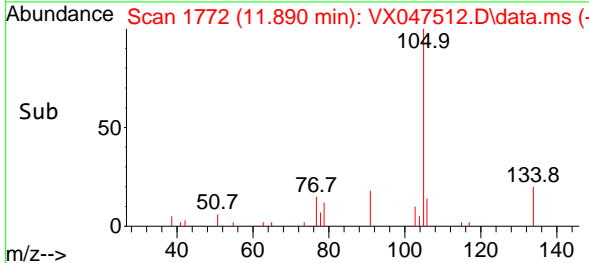
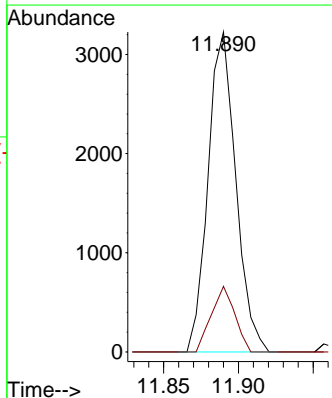
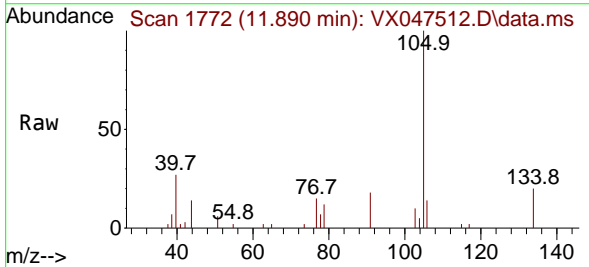
Instrument : MSVOA_X
 ClientSampleId :

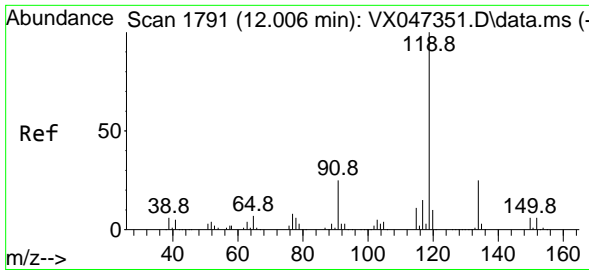
Tgt Ion: 91 Resp: 2857
 Ion Ratio Lower Upper
 91 100
 126 27.1 14.4 43.0



#85
 sec-Butylbenzene
 Concen: 0.304 ug/l
 RT: 11.890 min Scan# 1772
 Delta R.T. 0.000 min
 Lab File: VX047512.D
 Acq: 25 Aug 2025 10:43

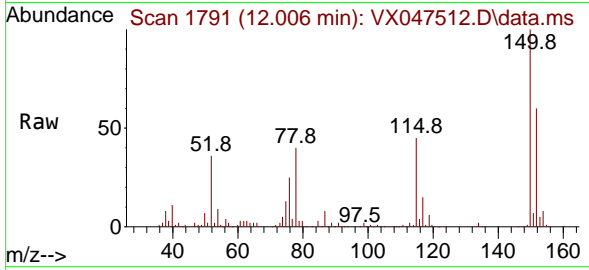
Tgt Ion: 105 Resp: 4161
 Ion Ratio Lower Upper
 105 100
 134 17.3 9.8 29.5





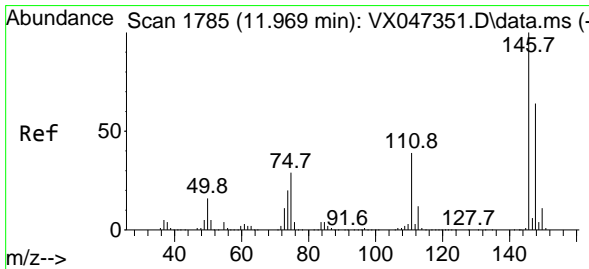
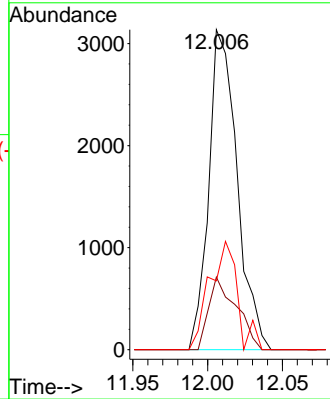
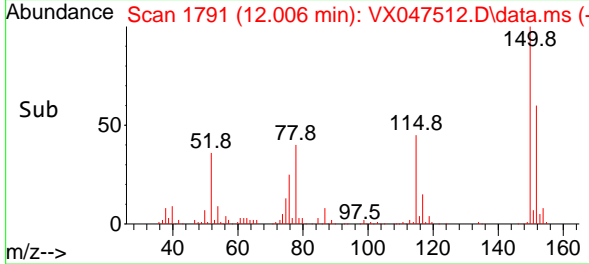
#86
 p-Isopropyltoluene
 Concen: 0.356 ug/l
 RT: 12.006 min Scan# 1791
 Delta R.T. 0.000 min
 Lab File: VX047512.D
 Acq: 25 Aug 2025 10:43

Instrument : MSVOA_X
 ClientSampleId :

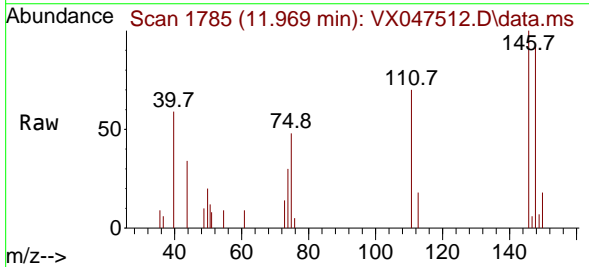


Tgt Ion:119 Resp: 4125

Ion	Ratio	Lower	Upper
119	100		
134	22.2	12.8	38.4
91	33.3	12.4	37.4

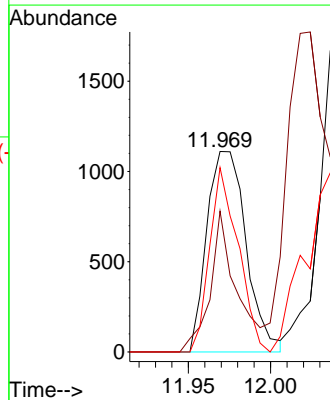
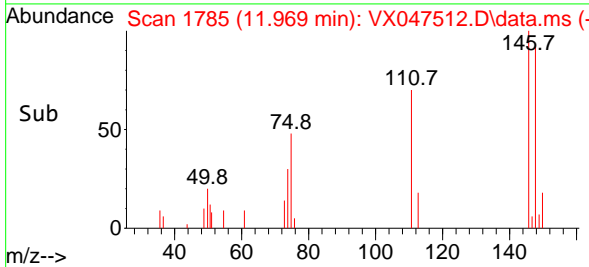


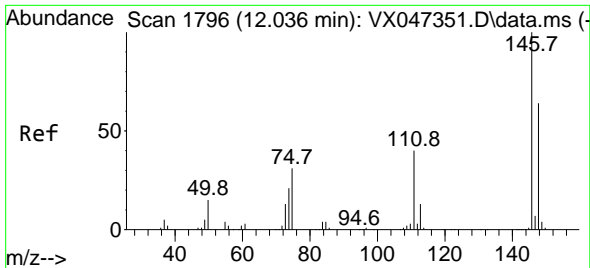
#87
 1,3-Dichlorobenzene
 Concen: 0.294 ug/l
 RT: 11.969 min Scan# 1785
 Delta R.T. 0.000 min
 Lab File: VX047512.D
 Acq: 25 Aug 2025 10:43



Tgt Ion:146 Resp: 1844

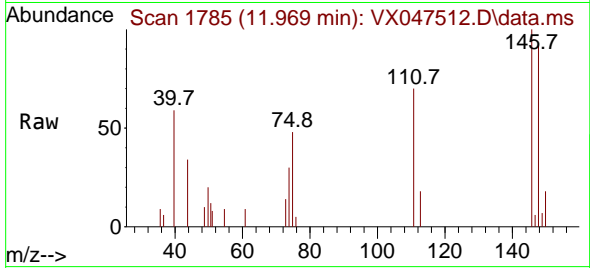
Ion	Ratio	Lower	Upper
146	100		
111	46.3	20.6	61.8
148	66.8	31.9	95.5



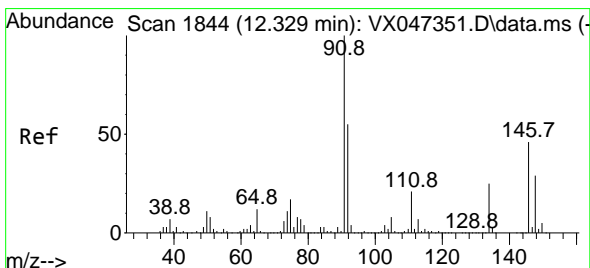
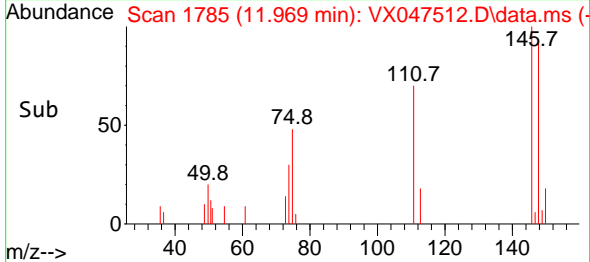
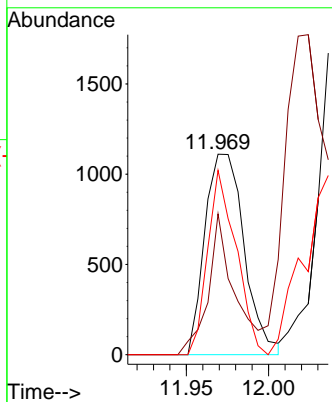


#88
 1,4-Dichlorobenzene
 Concen: 0.286 ug/l
 RT: 11.969 min Scan# 11
 Delta R.T. -0.067 min
 Lab File: VX047512.D
 Acq: 25 Aug 2025 10:43

Instrument :
 MSVOA_X
 ClientSampleId :

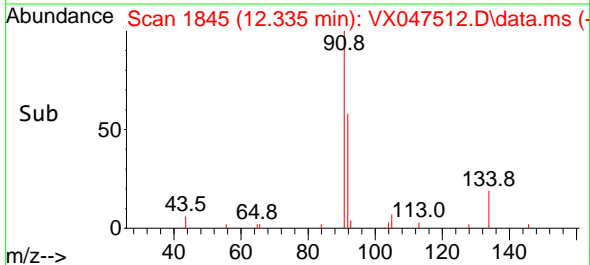
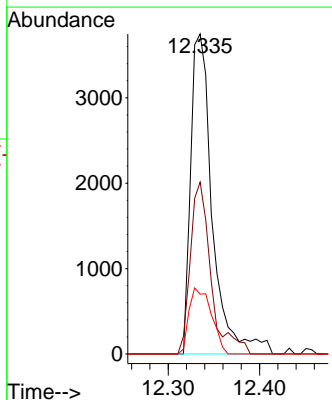
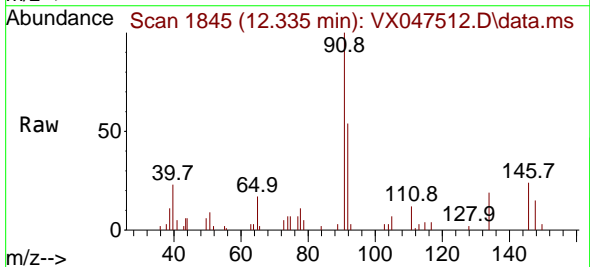


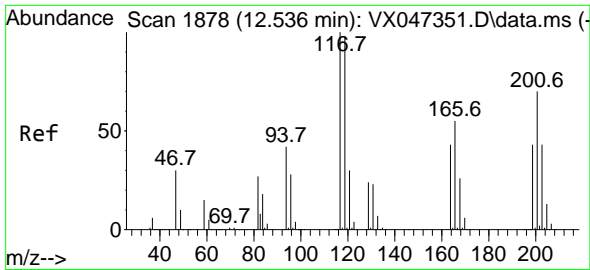
Tgt Ion:146 Resp: 1844
 Ion Ratio Lower Upper
 146 100
 111 46.3 20.4 61.2
 148 66.8 31.7 95.1



#89
 n-Butylbenzene
 Concen: 0.573 ug/l
 RT: 12.335 min Scan# 1845
 Delta R.T. 0.006 min
 Lab File: VX047512.D
 Acq: 25 Aug 2025 10:43

Tgt Ion: 91 Resp: 6175
 Ion Ratio Lower Upper
 91 100
 92 51.0 27.2 81.5
 134 21.3 12.6 37.8

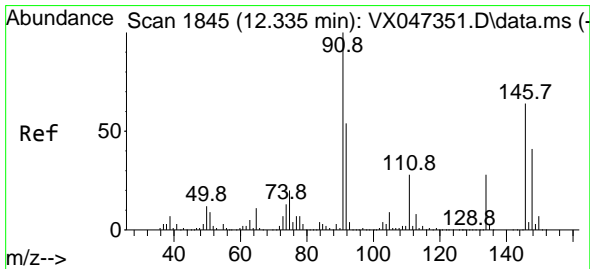
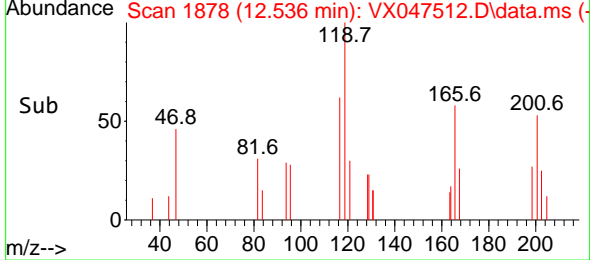
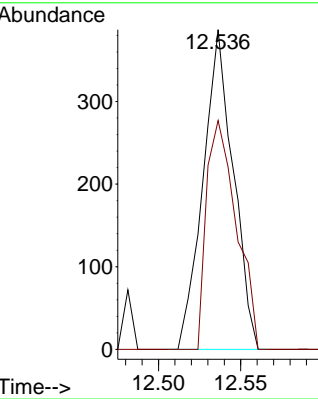
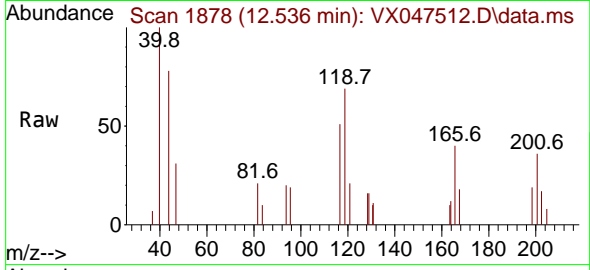




#90
 Hexachloroethane
 Concen: 0.243 ug/l
 RT: 12.536 min Scan# 1878
 Delta R.T. 0.000 min
 Lab File: VX047512.D
 Acq: 25 Aug 2025 10:43

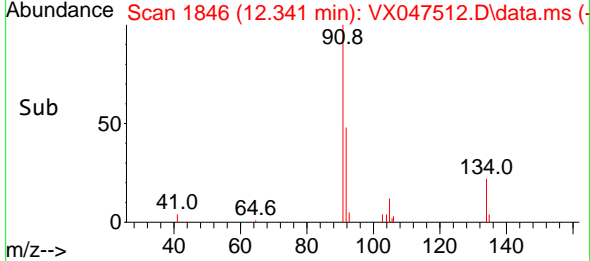
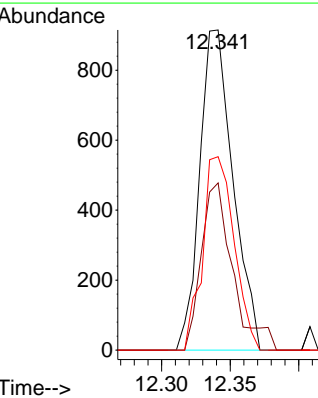
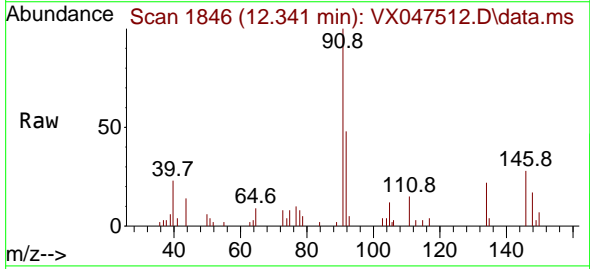
Instrument : MSVOA_X
 ClientSampleId :

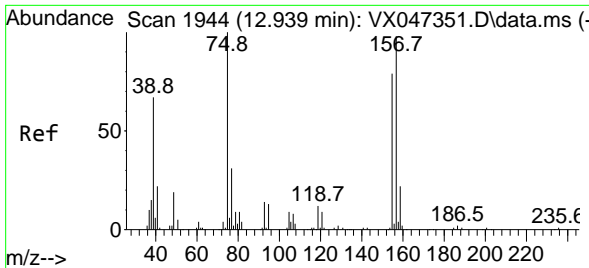
Tgt Ion:117 Resp: 494
 Ion Ratio Lower Upper
 117 100
 201 70.9 35.1 105.3



#91
 1,2-Dichlorobenzene
 Concen: 0.259 ug/l
 RT: 12.341 min Scan# 1846
 Delta R.T. 0.006 min
 Lab File: VX047512.D
 Acq: 25 Aug 2025 10:43

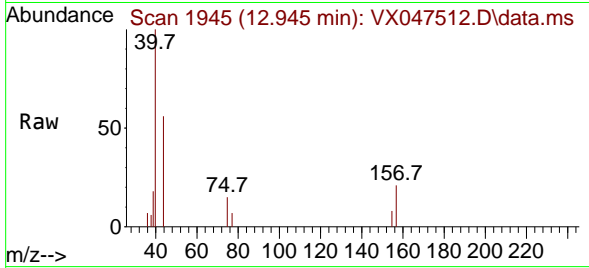
Tgt Ion:146 Resp: 1545
 Ion Ratio Lower Upper
 146 100
 111 49.2 22.1 66.1
 148 57.3 31.9 95.5



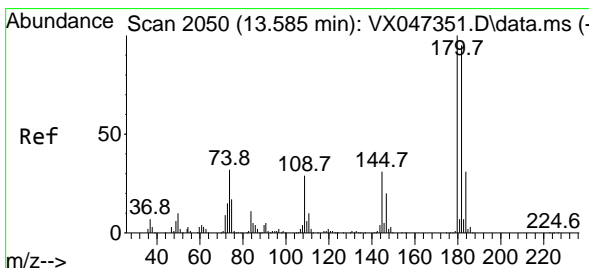
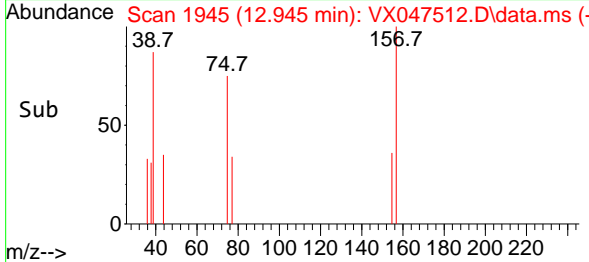
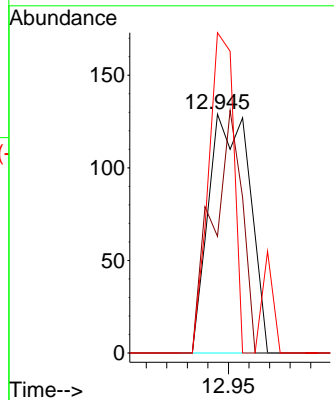


#92
 1,2-Dibromo-3-Chloropropane
 Concen: 0.236 ug/l
 RT: 12.945 min Scan# 1945
 Delta R.T. 0.006 min
 Lab File: VX047512.D
 Acq: 25 Aug 2025 10:43

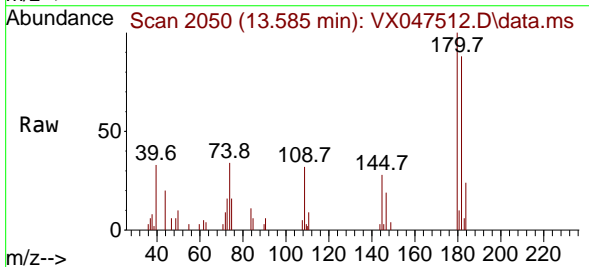
Instrument : MSVOA_X
 ClientSampleId :



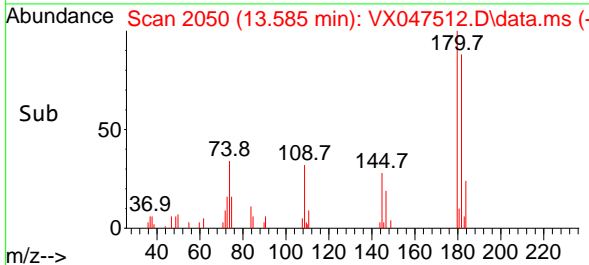
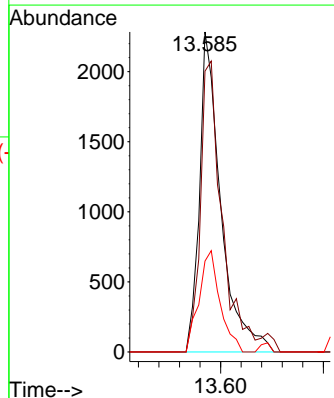
Tgt Ion	Resp	Lower	Upper
75	180		
75	100		
155	72.8	41.3	123.7
157	82.2	51.5	154.5

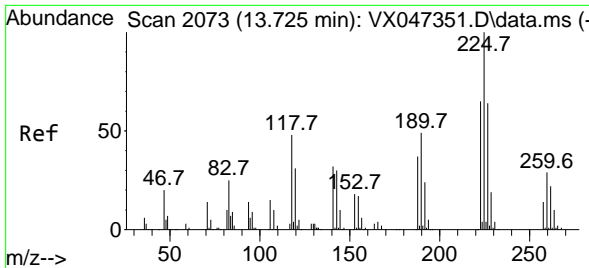


#93
 1,2,4-Trichlorobenzene
 Concen: 0.824 ug/l
 RT: 13.585 min Scan# 2050
 Delta R.T. 0.000 min
 Lab File: VX047512.D
 Acq: 25 Aug 2025 10:43



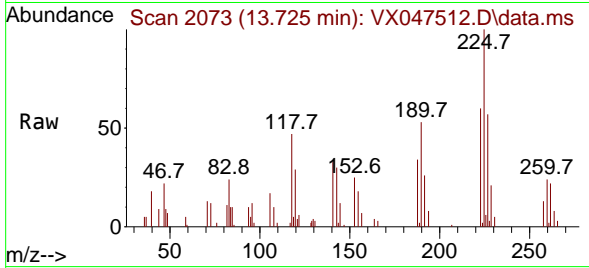
Tgt Ion	Resp	Lower	Upper
180	3288		
180	100		
182	94.6	48.1	144.4
145	31.5	16.2	48.5



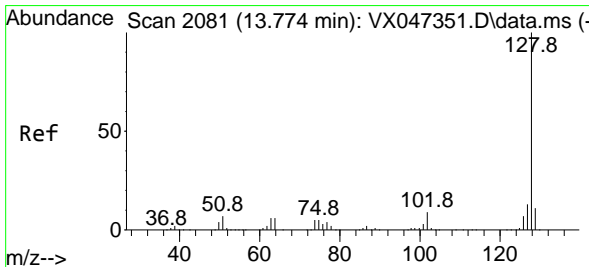
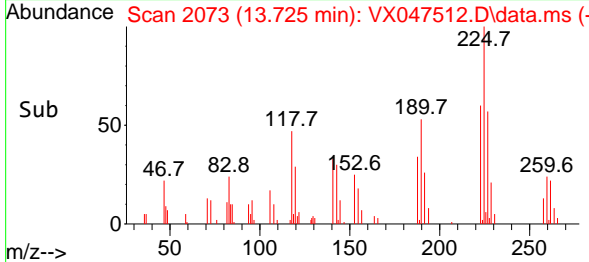
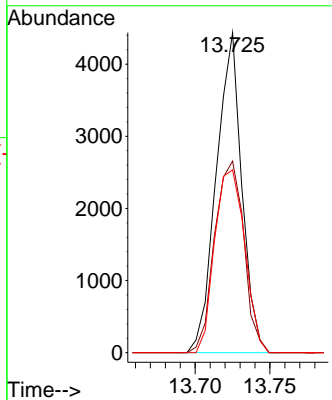


#94
 Hexachlorobutadiene
 Concen: 3.705 ug/l
 RT: 13.725 min Scan# 2073
 Delta R.T. 0.000 min
 Lab File: VX047512.D
 Acq: 25 Aug 2025 10:43

Instrument : MSVOA_X
 ClientSampleId :

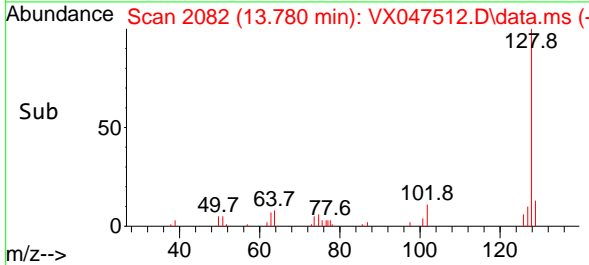
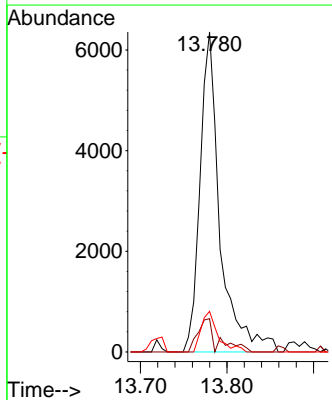
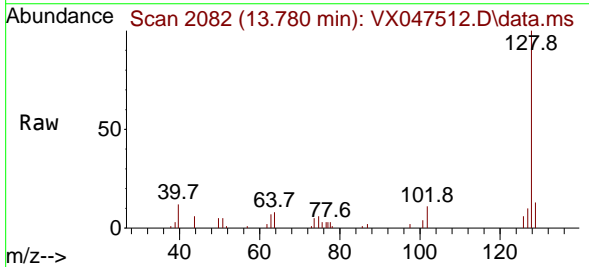


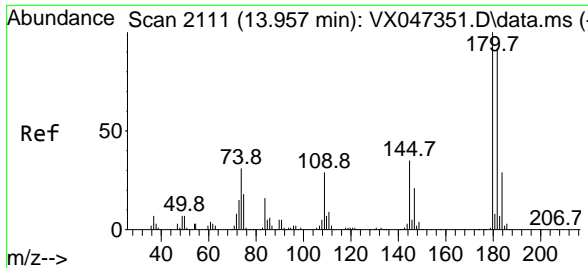
Tgt Ion:225 Resp: 5265
 Ion Ratio Lower Upper
 225 100
 223 68.4 32.2 96.6
 227 67.3 31.6 95.0



#95
 Naphthalene
 Concen: 0.891 ug/l
 RT: 13.780 min Scan# 2082
 Delta R.T. 0.006 min
 Lab File: VX047512.D
 Acq: 25 Aug 2025 10:43

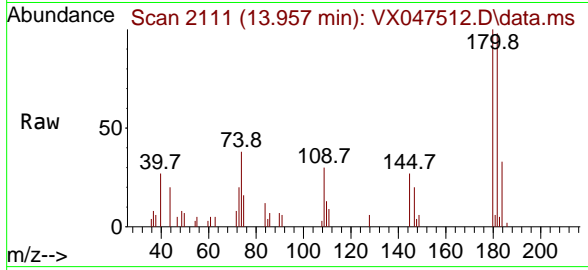
Tgt Ion:128 Resp: 10169
 Ion Ratio Lower Upper
 128 100
 127 10.5 10.1 15.1
 129 10.7 8.7 13.1





#96
 1,2,3-Trichlorobenzene
 Concen: 0.884 ug/l
 RT: 13.957 min Scan# 21
 Delta R.T. 0.000 min
 Lab File: VX047512.D
 Acq: 25 Aug 2025 10:43

Instrument :
 MSVOA_X
 ClientSampleId :



Tgt Ion:180 Resp: 3325

Ion	Ratio	Lower	Upper
180	100		
182	99.5	48.0	144.2
145	34.3	17.4	52.2

