

Data Path : Z:\voasrv\HPCHEM1\MSVOA_X\Data\VX082525\
 Data File : VX047513.D
 Acq On : 25 Aug 2025 11:04
 Operator : JC/MD
 Sample : VX0825WBL01
 Misc : 5.0mL/MSVOA_X/WATER
 ALS Vial : 4 Sample Multiplier: 1

Instrument :
 MSVOA_X
 ClientSampleId :

Quant Time: Aug 26 00:35:55 2025
 Quant Method : Z:\voasrv\HPCHEM1\MSVOA_X\Method\82X081525W.M
 Quant Title : SW846 8260
 QLast Update : Mon Aug 18 04:18:28 2025
 Response via : Initial Calibration

Compound	R.T.	QIon	Response	Conc	Units	Dev(Min)

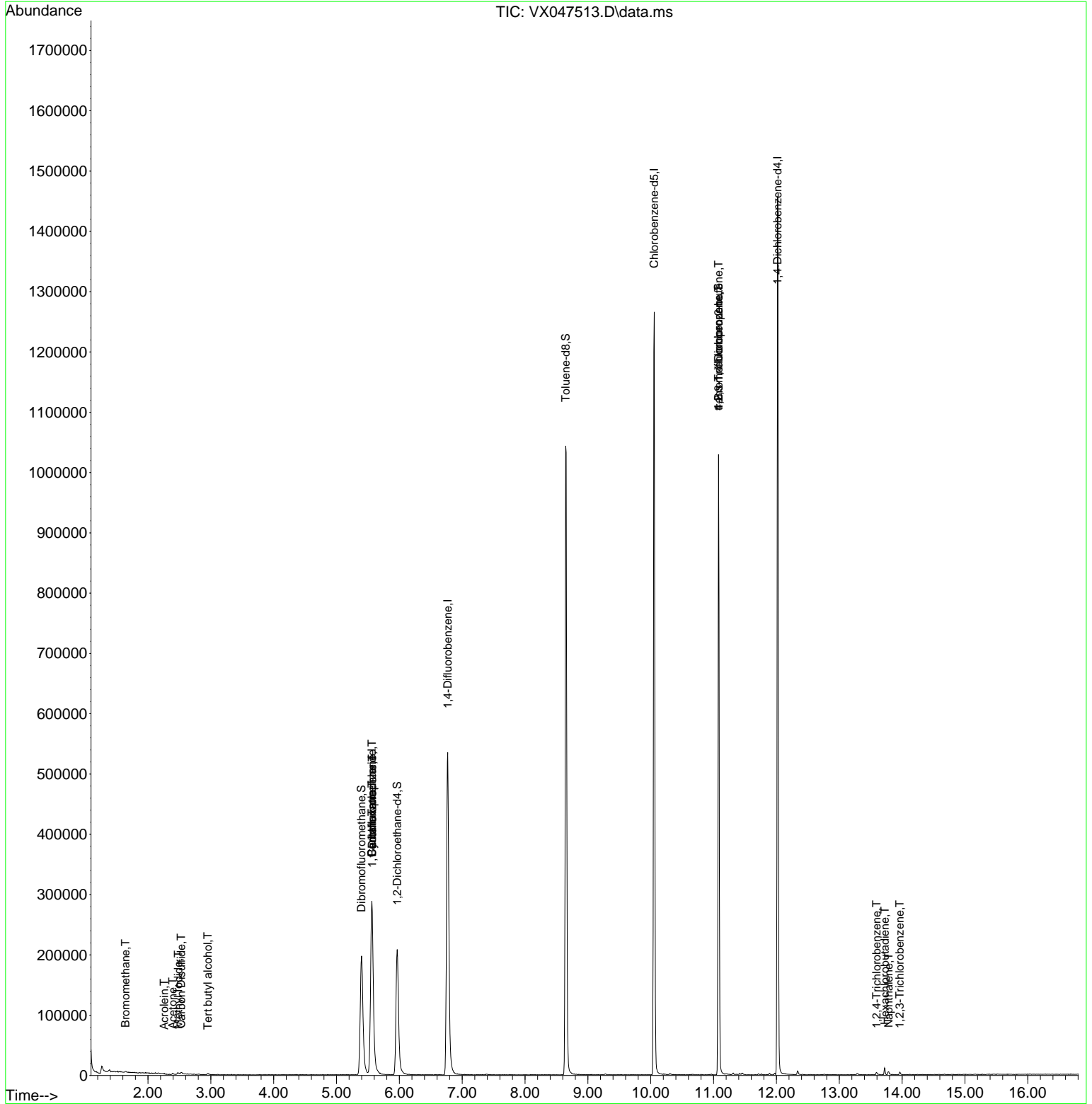
Internal Standards						
1) Pentafluorobenzene	5.562	168	288899	50.000	ug/l	0.00
34) 1,4-Difluorobenzene	6.769	114	581002	50.000	ug/l	0.00
63) Chlorobenzene-d5	10.055	117	569460	50.000	ug/l	0.00
72) 1,4-Dichlorobenzene-d4	12.018	152	285001	50.000	ug/l	0.00
System Monitoring Compounds						
33) 1,2-Dichloroethane-d4	5.964	65	221014	54.663	ug/l	0.00
Spiked Amount	50.000	Range 78 - 117	Recovery	=	109.320%	
35) Dibromofluoromethane	5.397	113	187003	49.593	ug/l	0.00
Spiked Amount	50.000	Range 75 - 124	Recovery	=	99.180%	
50) Toluene-d8	8.647	98	655089	48.605	ug/l	0.00
Spiked Amount	50.000	Range 92 - 112	Recovery	=	97.220%	
62) 4-Bromofluorobenzene	11.079	95	268429	53.972	ug/l	0.00
Spiked Amount	50.000	Range 83 - 123	Recovery	=	107.940%	
Target Compounds						
						Qvalue
5) Bromomethane	1.642	94	1144	0.681	ug/l #	71
10) Methyl Iodide	2.483	142	4388	0.718	ug/l	95
11) Tert butyl alcohol	2.953	59	156	0.444	ug/l #	72
13) Acrolein	2.258	56	354	0.477	ug/l #	38
16) Acetone	2.392	43	2537	1.669	ug/l #	76
17) Carbon Disulfide	2.526	76	3653	0.333	ug/l #	93
31) Cyclohexane	5.562	56	6435	0.989	ug/l #	1
36) 1,1-Dichloropropene	5.568	75	24184	4.063	ug/l #	50
38) Carbon Tetrachloride	5.562	117	31007	4.767	ug/l #	16
76) 1,2,3-Trichloropropane	11.079	75	138908	26.574	ug/l #	38
81) trans-1,4-Dichloro-2-b...	11.079	75	138908	105.207	ug/l #	7
93) 1,2,4-Trichlorobenzene	13.591	180	1614	0.244	ug/l	90
94) Hexachlorobutadiene	13.725	225	1479	0.628	ug/l	90
95) Naphthalene	13.786	128	4790	0.253	ug/l	96
96) 1,2,3-Trichlorobenzene	13.963	180	1411	0.226	ug/l	90

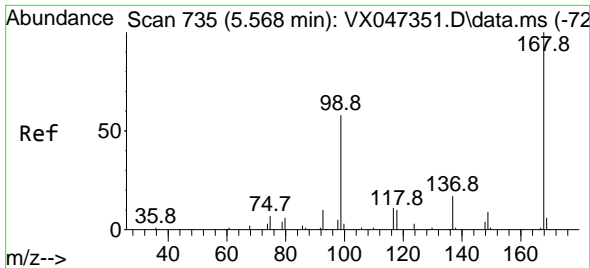
(#) = qualifier out of range (m) = manual integration (+) = signals summed

Data Path : Z:\voasrv\HPCHEM1\MSVOA_X\Data\VX082525\
 Data File : VX047513.D
 Acq On : 25 Aug 2025 11:04
 Operator : JC/MD
 Sample : VX0825WBL01
 Misc : 5.0mL/MSVOA_X/WATER
 ALS Vial : 4 Sample Multiplier: 1

Instrument :
 MSVOA_X
 ClientSampleId :

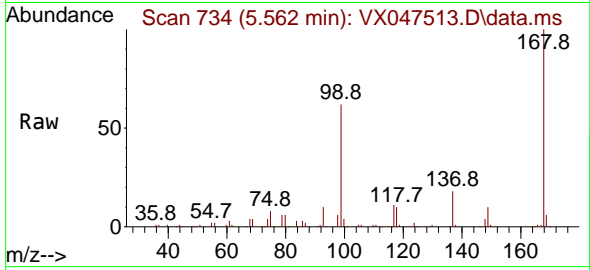
Quant Time: Aug 26 00:35:55 2025
 Quant Method : Z:\voasrv\HPCHEM1\MSVOA_X\Method\82X081525W.M
 Quant Title : SW846 8260
 QLast Update : Mon Aug 18 04:18:28 2025
 Response via : Initial Calibration



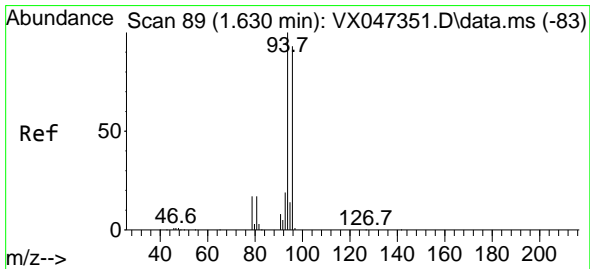
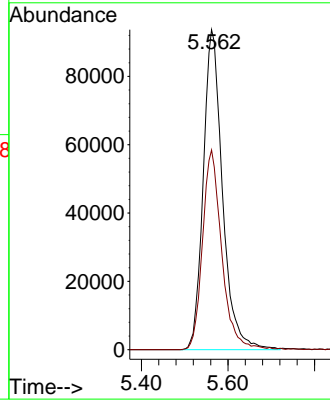
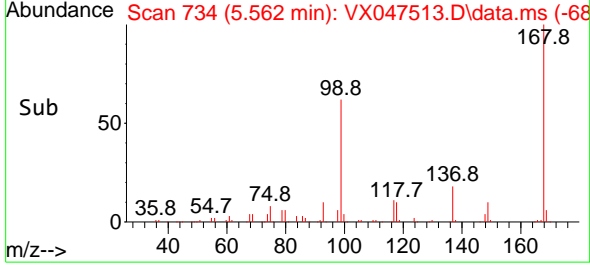


#1
 Pentafluorobenzene
 Concen: 50.000 ug/l
 RT: 5.562 min Scan# 71
 Delta R.T. -0.006 min
 Lab File: VX047513.D
 Acq: 25 Aug 2025 11:04

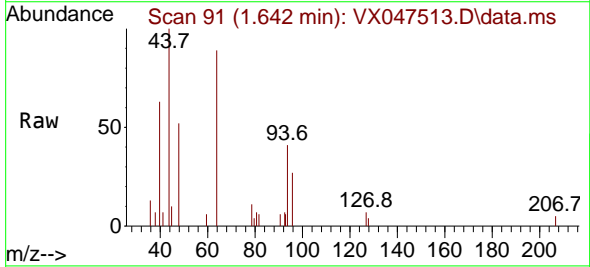
Instrument :
 MSVOA_X
 ClientSampleId :



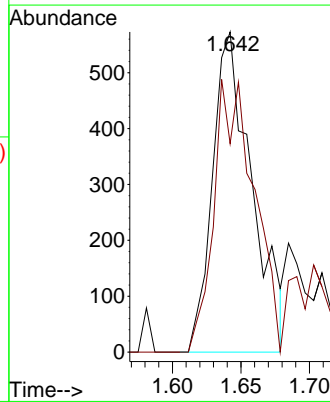
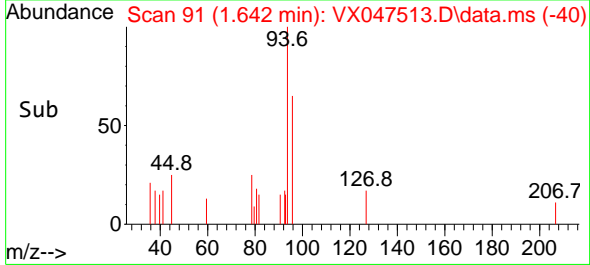
Tgt Ion:168 Resp: 288899
 Ion Ratio Lower Upper
 168 100
 99 62.4 47.9 71.9

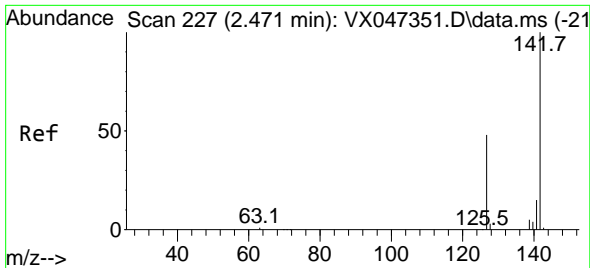


#5
 Bromomethane
 Concen: 0.681 ug/l
 RT: 1.642 min Scan# 91
 Delta R.T. 0.012 min
 Lab File: VX047513.D
 Acq: 25 Aug 2025 11:04



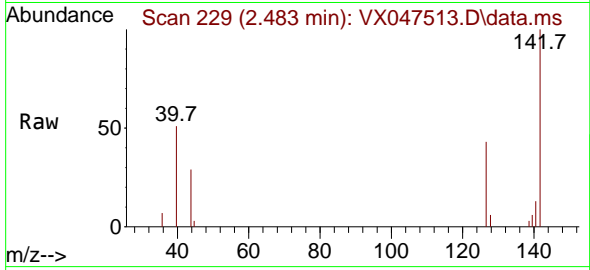
Tgt Ion: 94 Resp: 1144
 Ion Ratio Lower Upper
 94 100
 96 65.1 74.7 112.1#





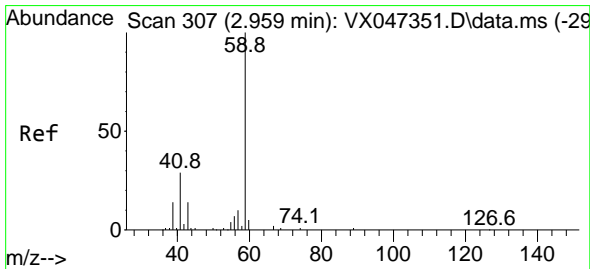
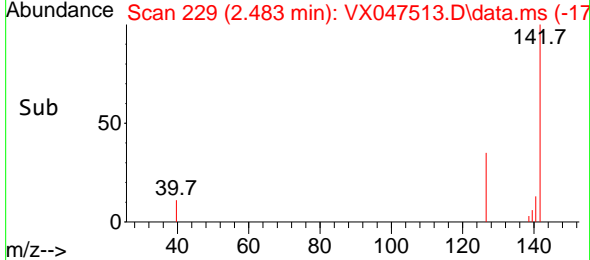
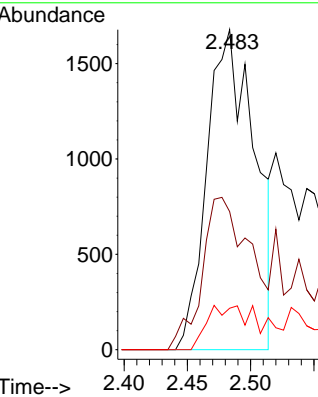
#10
 Methyl Iodide
 Concen: 0.718 ug/l
 RT: 2.483 min Scan# 21
 Delta R.T. 0.012 min
 Lab File: VX047513.D
 Acq: 25 Aug 2025 11:04

Instrument : MSVOA_X
 ClientSampleId :



Tgt Ion:142 Resp: 4388

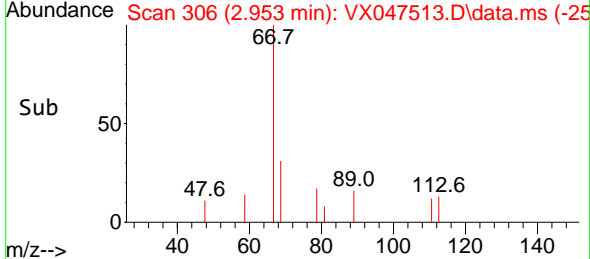
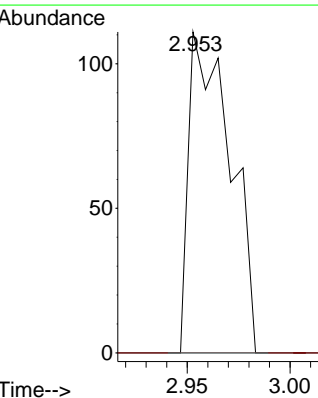
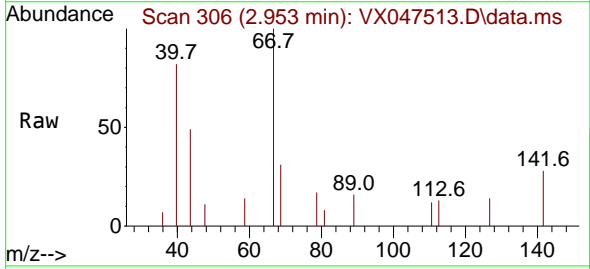
Ion	Ratio	Lower	Upper
142	100		
127	48.8	36.1	54.1
141	15.0	11.1	16.7

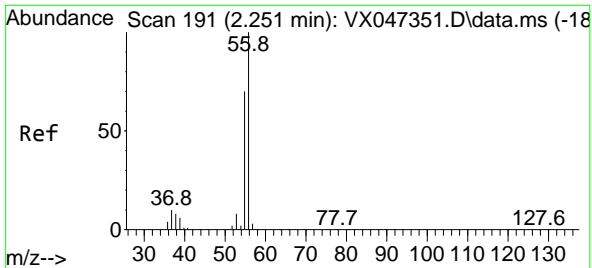


#11
 Tert butyl alcohol
 Concen: 0.444 ug/l
 RT: 2.953 min Scan# 306
 Delta R.T. -0.006 min
 Lab File: VX047513.D
 Acq: 25 Aug 2025 11:04

Tgt Ion: 59 Resp: 156

Ion	Ratio	Lower	Upper
59	100		
57	0.0	8.3	12.5#

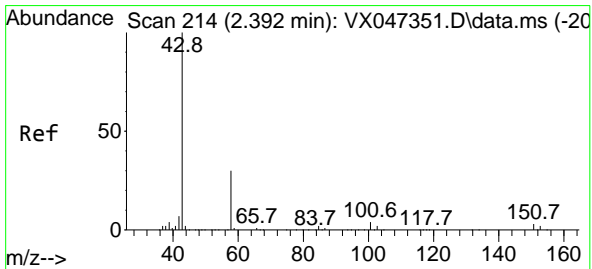
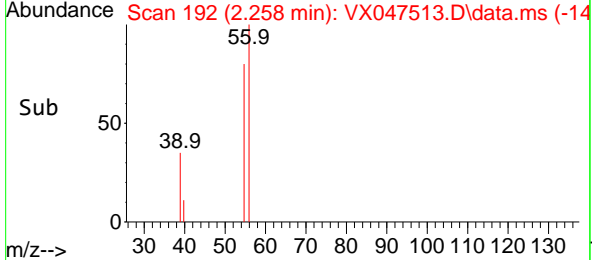
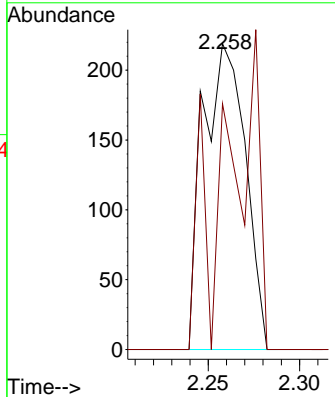
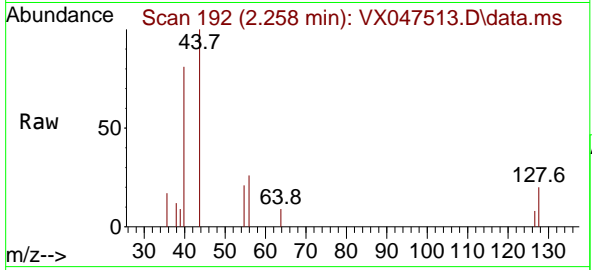




#13
 Acrolein
 Concen: 0.477 ug/l
 RT: 2.258 min Scan# 191
 Delta R.T. 0.006 min
 Lab File: VX047513.D
 Acq: 25 Aug 2025 11:04

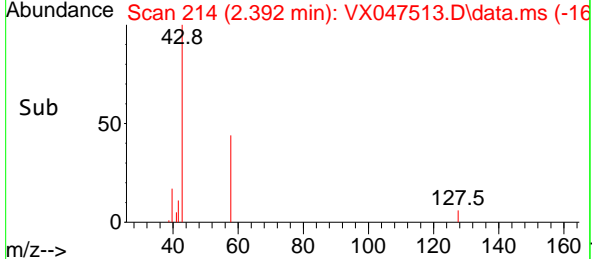
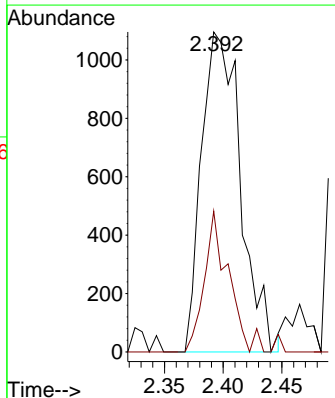
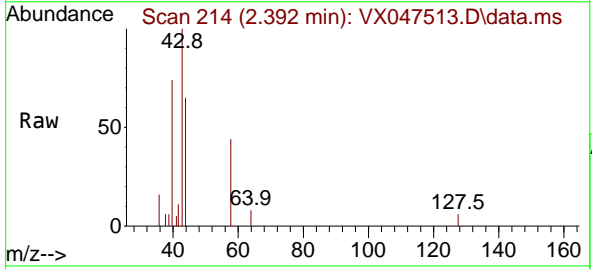
Instrument : MSVOA_X
 ClientSampleId :

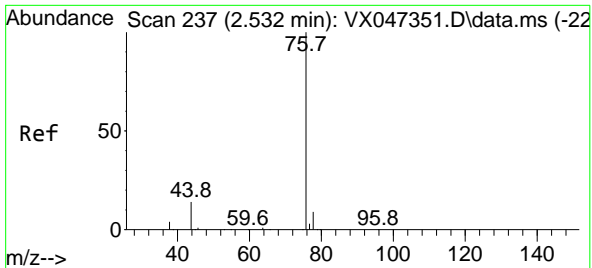
Tgt Ion: 56 Resp: 354
 Ion Ratio Lower Upper
 56 100
 55 18.9 55.5 83.3#



#16
 Acetone
 Concen: 1.669 ug/l
 RT: 2.392 min Scan# 214
 Delta R.T. 0.000 min
 Lab File: VX047513.D
 Acq: 25 Aug 2025 11:04

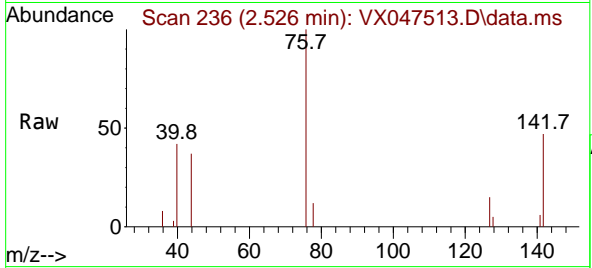
Tgt Ion: 43 Resp: 2537
 Ion Ratio Lower Upper
 43 100
 58 44.0 24.8 37.2#



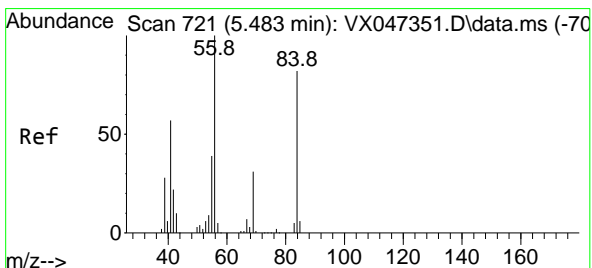
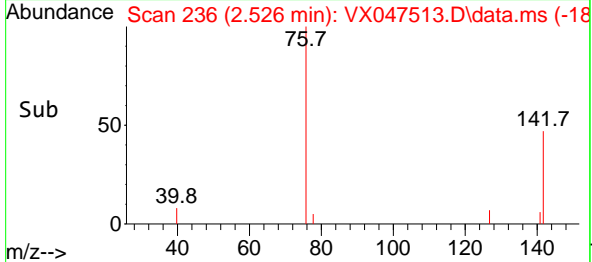
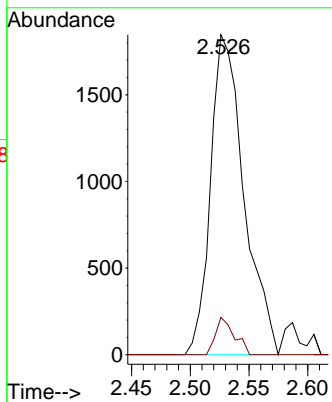


#17
 Carbon Disulfide
 Concen: 0.333 ug/l
 RT: 2.526 min Scan# 21
 Delta R.T. -0.006 min
 Lab File: VX047513.D
 Acq: 25 Aug 2025 11:04

Instrument : MSVOA_X
 ClientSampleId :

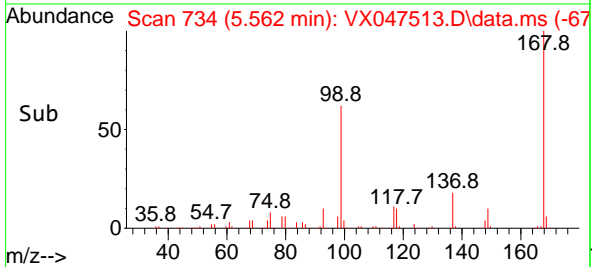
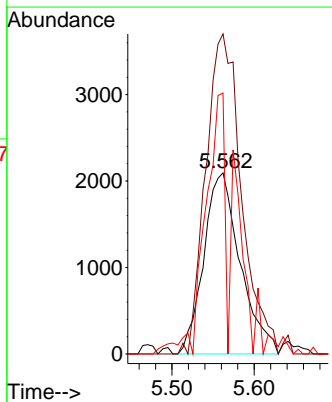
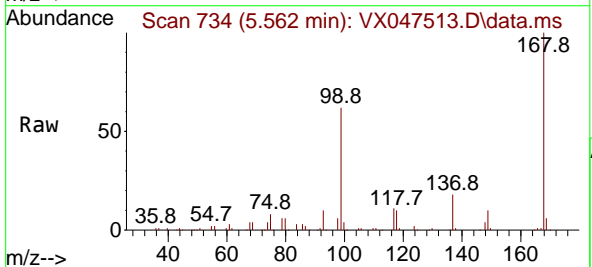


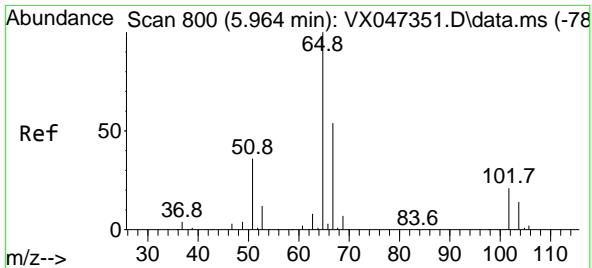
Tgt Ion: 76 Resp: 3653
 Ion Ratio Lower Upper
 76 100
 78 11.7 7.2 10.8#



#31
 Cyclohexane
 Concen: 0.989 ug/l
 RT: 5.562 min Scan# 734
 Delta R.T. 0.079 min
 Lab File: VX047513.D
 Acq: 25 Aug 2025 11:04

Tgt Ion: 56 Resp: 6435
 Ion Ratio Lower Upper
 56 100
 69 176.7 24.3 36.5#
 84 140.0 65.3 97.9#

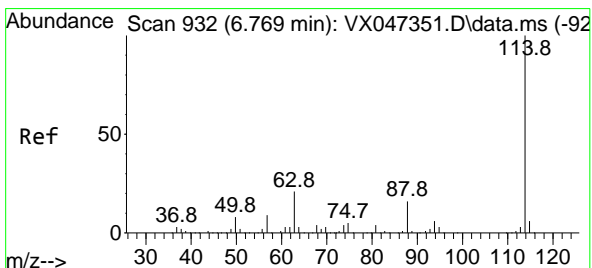
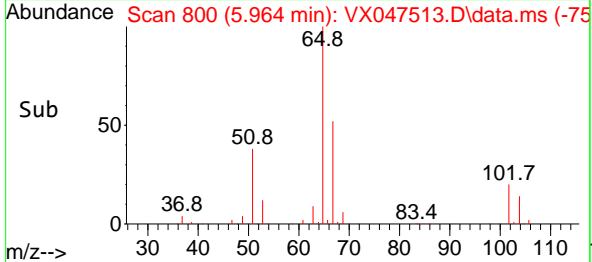
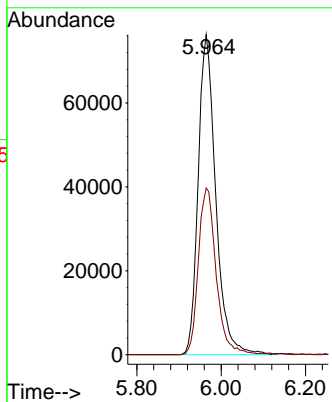
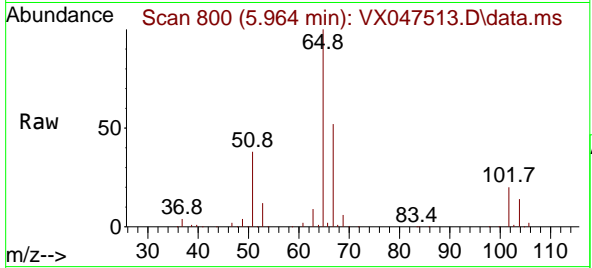




#33
 1,2-Dichloroethane-d4
 Concen: 54.663 ug/l
 RT: 5.964 min Scan# 800
 Delta R.T. 0.000 min
 Lab File: VX047513.D
 Acq: 25 Aug 2025 11:04

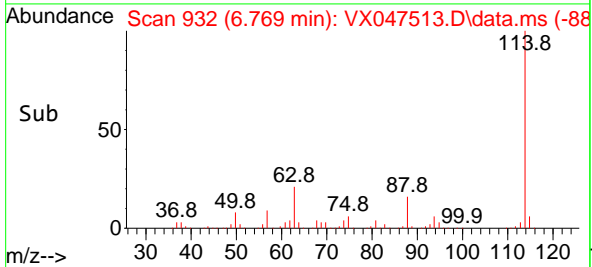
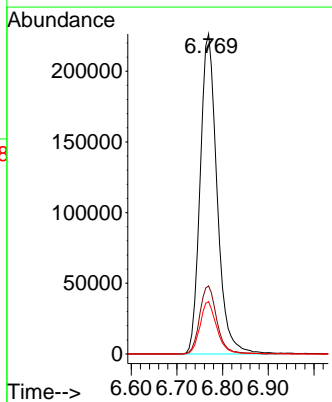
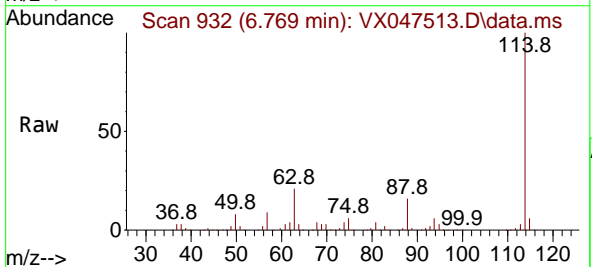
Instrument : MSVOA_X
 ClientSampleId :

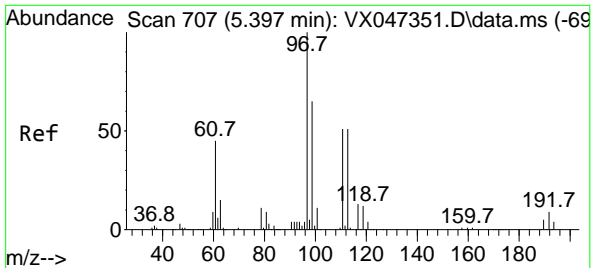
Tgt Ion: 65 Resp: 221014
 Ion Ratio Lower Upper
 65 100
 67 52.9 0.0 106.0



#34
 1,4-Difluorobenzene
 Concen: 50.000 ug/l
 RT: 6.769 min Scan# 932
 Delta R.T. 0.000 min
 Lab File: VX047513.D
 Acq: 25 Aug 2025 11:04

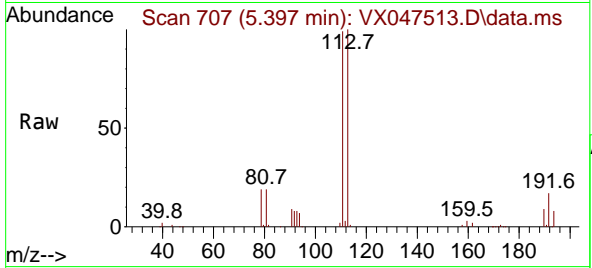
Tgt Ion: 114 Resp: 581002
 Ion Ratio Lower Upper
 114 100
 63 21.3 0.0 42.4
 88 16.4 0.0 33.0



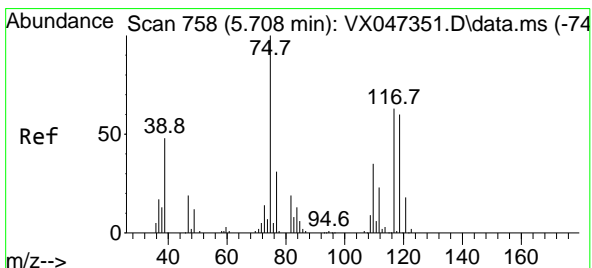
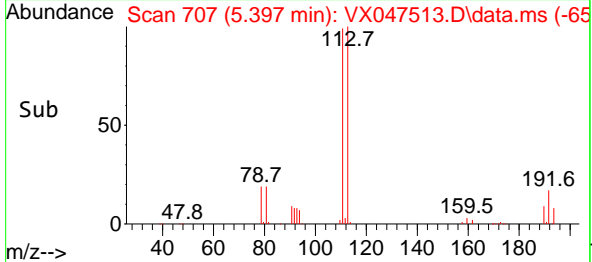
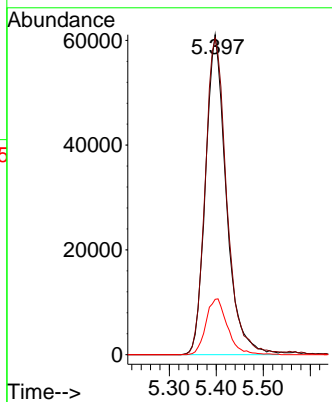


#35
 Dibromofluoromethane
 Concen: 49.593 ug/l
 RT: 5.397 min Scan# 707
 Delta R.T. 0.000 min
 Lab File: VX047513.D
 Acq: 25 Aug 2025 11:04

Instrument :
 MSVOA_X
 ClientSampleId :

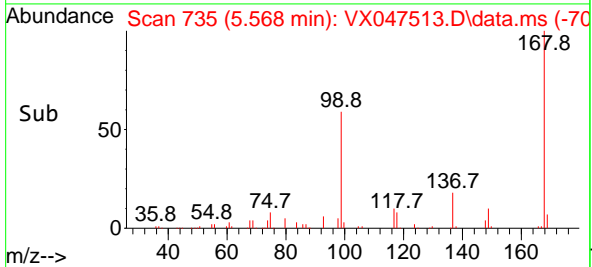
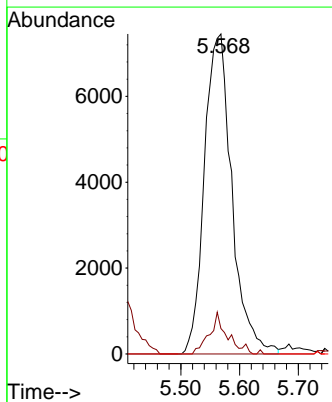
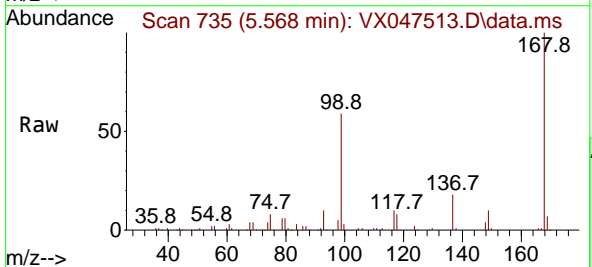


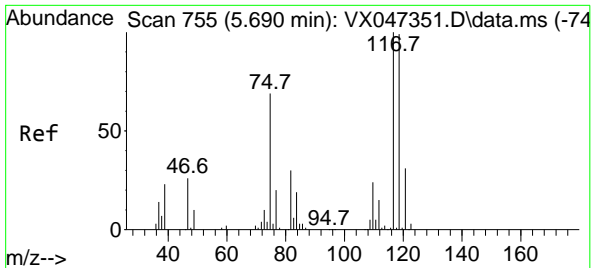
Tgt Ion:113 Resp: 187003
 Ion Ratio Lower Upper
 113 100
 111 102.7 81.4 122.2
 192 18.2 14.1 21.1



#36
 1,1-Dichloropropene
 Concen: 4.063 ug/l
 RT: 5.568 min Scan# 735
 Delta R.T. -0.140 min
 Lab File: VX047513.D
 Acq: 25 Aug 2025 11:04

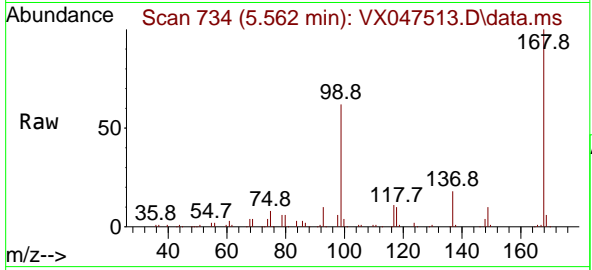
Tgt Ion: 75 Resp: 24184
 Ion Ratio Lower Upper
 75 100
 110 8.5 17.4 52.2#
 77 0.0 24.4 36.6#



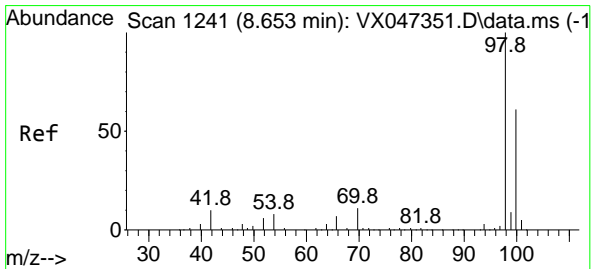
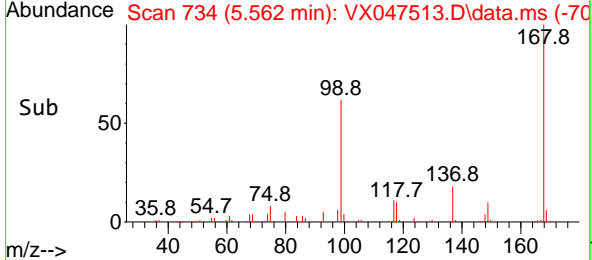
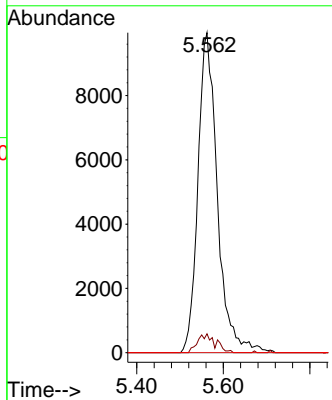


#38
 Carbon Tetrachloride
 Concen: 4.767 ug/l
 RT: 5.562 min Scan# 71
 Delta R.T. -0.128 min
 Lab File: VX047513.D
 Acq: 25 Aug 2025 11:04

Instrument :
 MSVOA_X
 ClientSampleId :

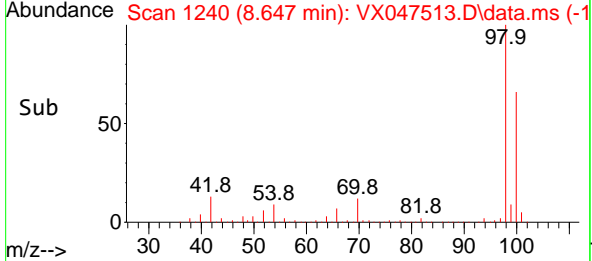
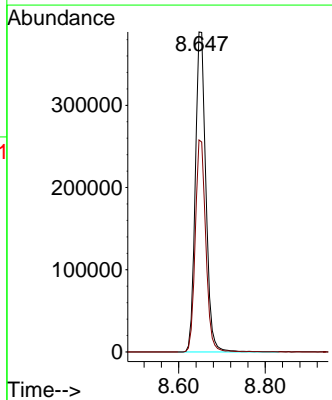
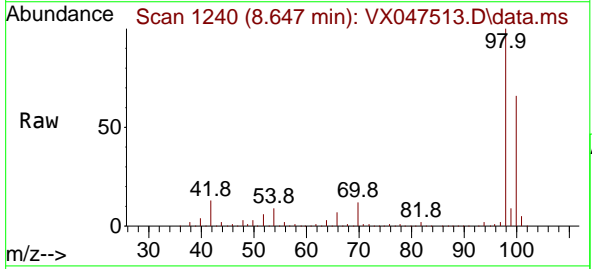


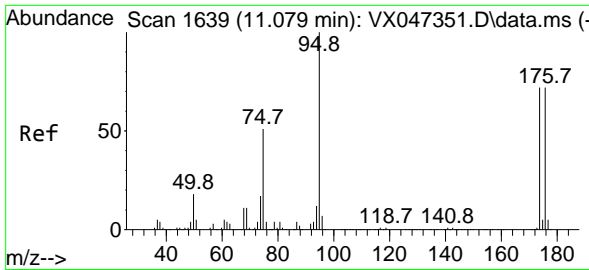
Tgt Ion:117 Resp: 31007
 Ion Ratio Lower Upper
 117 100
 119 5.9 78.5 117.7#
 121 0.0 24.7 37.1#



#50
 Toluene-d8
 Concen: 48.605 ug/l
 RT: 8.647 min Scan# 1240
 Delta R.T. -0.006 min
 Lab File: VX047513.D
 Acq: 25 Aug 2025 11:04

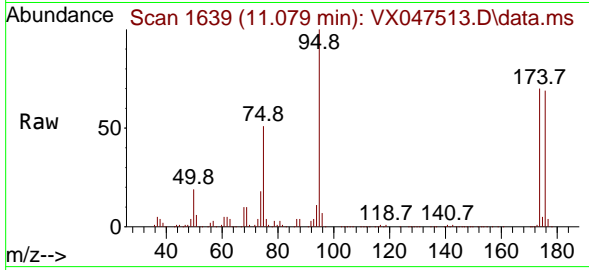
Tgt Ion: 98 Resp: 655089
 Ion Ratio Lower Upper
 98 100
 100 66.0 53.9 80.9



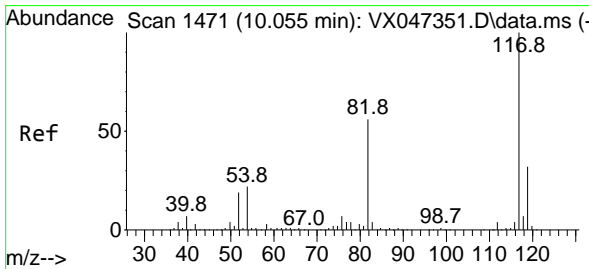
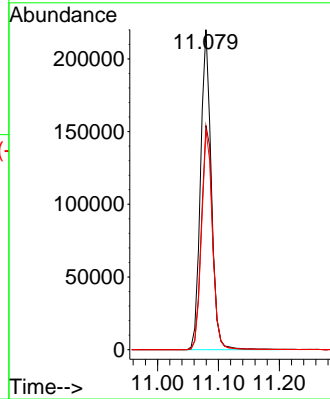
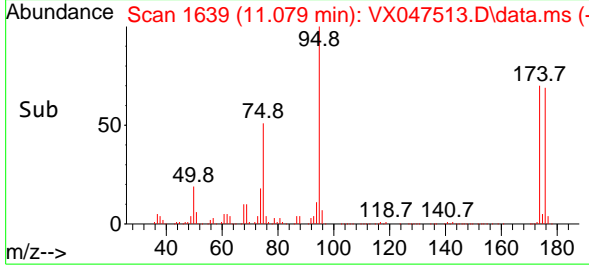


#62
 4-Bromofluorobenzene
 Concen: 53.972 ug/l
 RT: 11.079 min Scan# 1639
 Delta R.T. 0.000 min
 Lab File: VX047513.D
 Acq: 25 Aug 2025 11:04

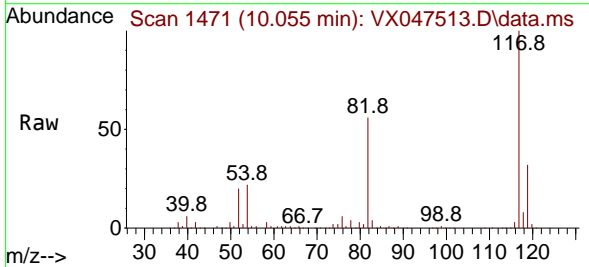
Instrument : MSVOA_X
 ClientSampleId :



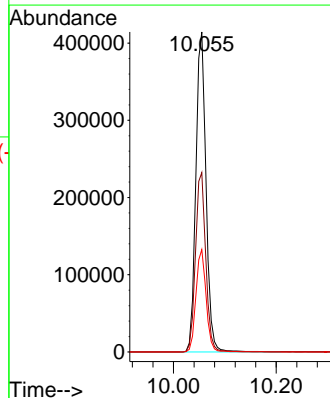
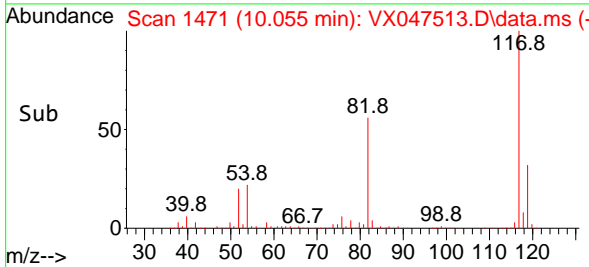
Tgt Ion: 95 Resp: 268429
 Ion Ratio Lower Upper
 95 100
 174 73.6 0.0 148.0
 176 70.3 0.0 145.4

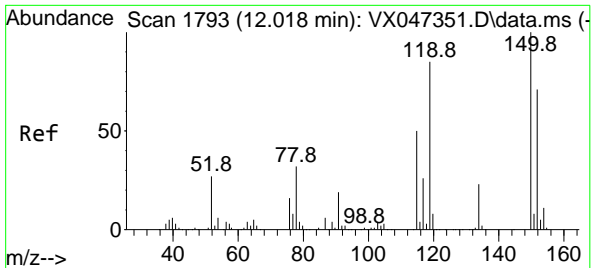


#63
 Chlorobenzene-d5
 Concen: 50.000 ug/l
 RT: 10.055 min Scan# 1471
 Delta R.T. 0.000 min
 Lab File: VX047513.D
 Acq: 25 Aug 2025 11:04



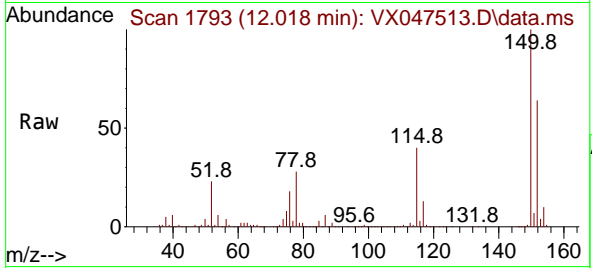
Tgt Ion: 117 Resp: 569460
 Ion Ratio Lower Upper
 117 100
 82 56.1 45.0 67.4
 119 32.0 25.8 38.8



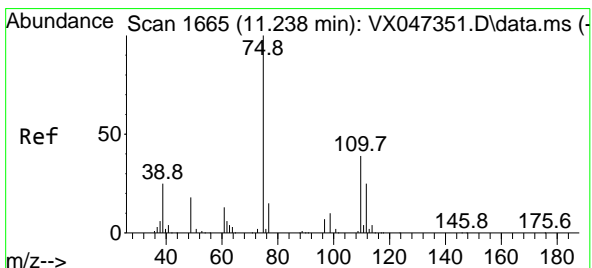
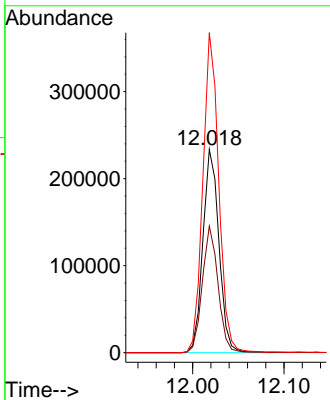
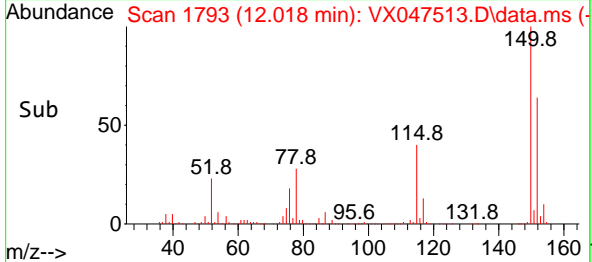


#72
 1,4-Dichlorobenzene-d4
 Concen: 50.000 ug/l
 RT: 12.018 min Scan# 1
 Delta R.T. 0.000 min
 Lab File: VX047513.D
 Acq: 25 Aug 2025 11:04

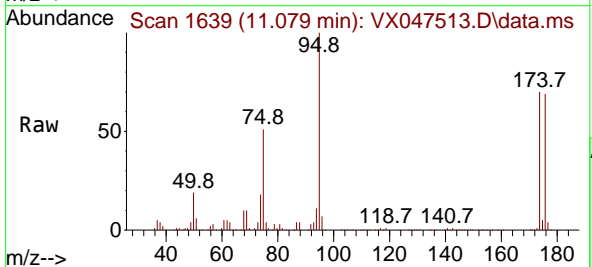
Instrument :
 MSVOA_X
 ClientSampleId :



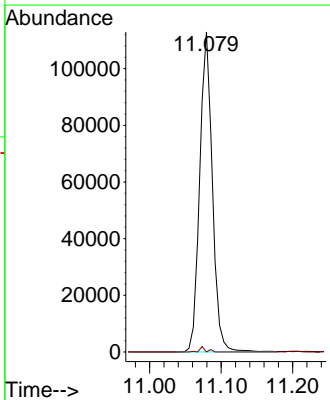
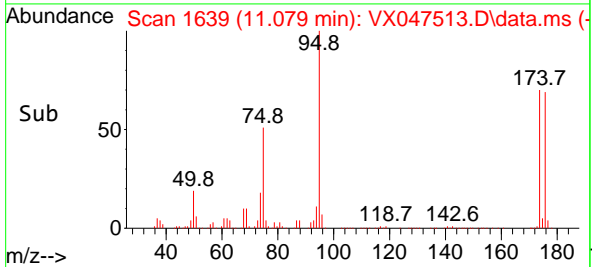
Tgt Ion:152 Resp: 285001
 Ion Ratio Lower Upper
 152 100
 115 61.3 44.6 133.8
 150 156.0 0.0 349.8

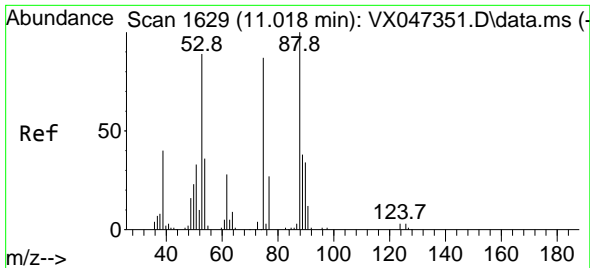


#76
 1,2,3-Trichloropropane
 Concen: 26.574 ug/l
 RT: 11.079 min Scan# 1639
 Delta R.T. -0.158 min
 Lab File: VX047513.D
 Acq: 25 Aug 2025 11:04



Tgt Ion: 75 Resp: 138908
 Ion Ratio Lower Upper
 75 100
 77 0.8 19.4 58.2#

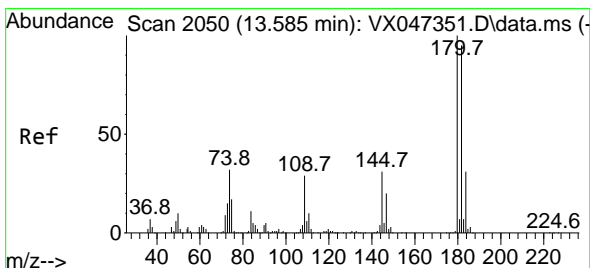
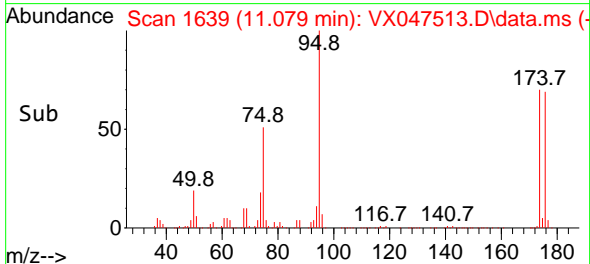
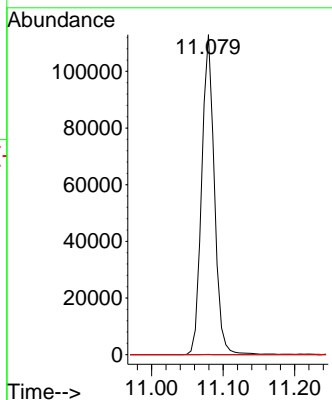
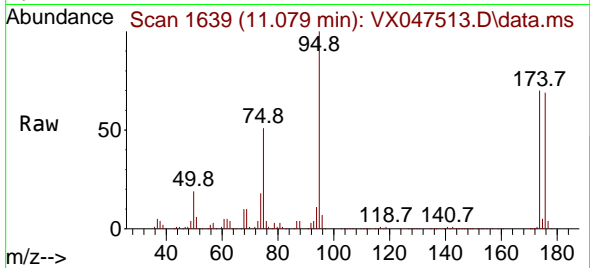




#81
 trans-1,4-Dichloro-2-butene
 Concen: 105.207 ug/l
 RT: 11.079 min Scan# 1
 Delta R.T. 0.061 min
 Lab File: VX047513.D
 Acq: 25 Aug 2025 11:04

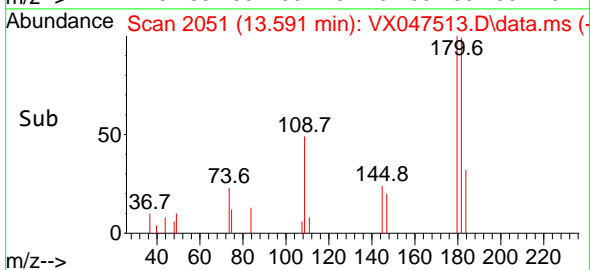
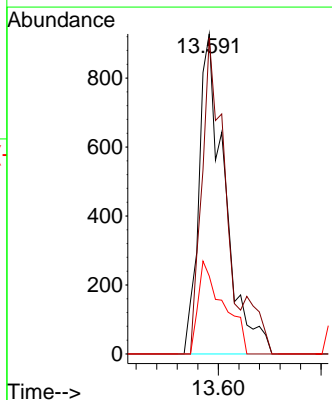
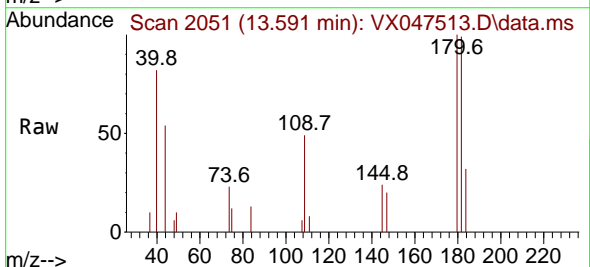
Instrument :
 MSVOA_X
 ClientSampleId :

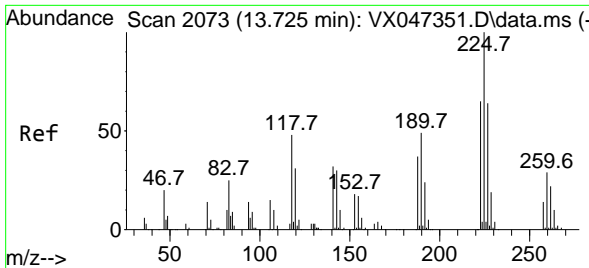
Tgt Ion: 75 Resp: 138908
 Ion Ratio Lower Upper
 75 100
 53 0.0 85.2 127.8#
 89 0.0 36.7 55.1#



#93
 1,2,4-Trichlorobenzene
 Concen: 0.244 ug/l
 RT: 13.591 min Scan# 2051
 Delta R.T. 0.006 min
 Lab File: VX047513.D
 Acq: 25 Aug 2025 11:04

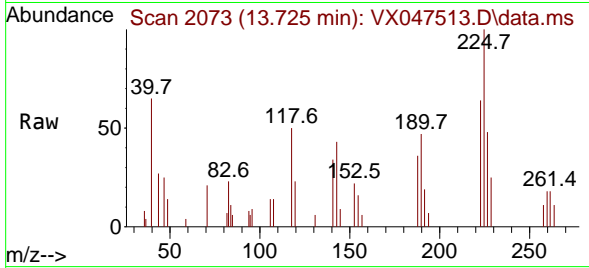
Tgt Ion:180 Resp: 1614
 Ion Ratio Lower Upper
 180 100
 182 85.3 48.1 144.4
 145 28.7 16.2 48.5



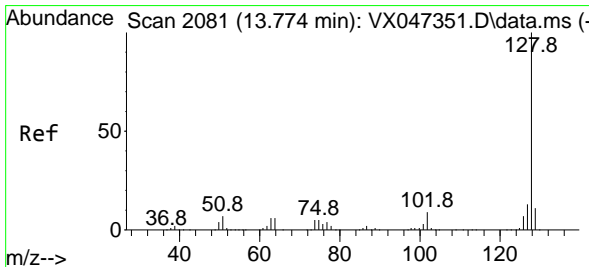
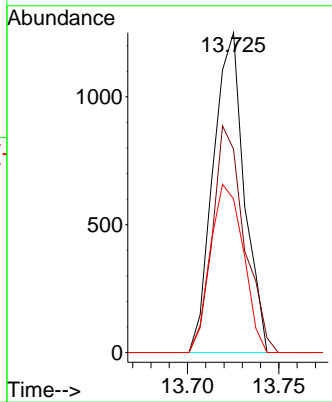
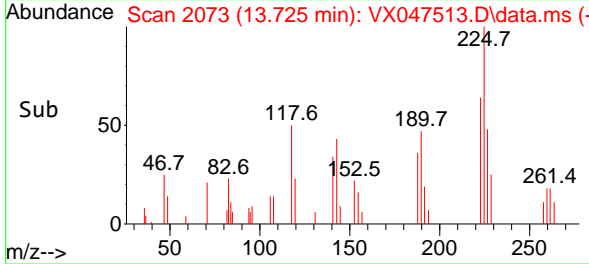


#94
 Hexachlorobutadiene
 Concen: 0.628 ug/l
 RT: 13.725 min Scan# 2083
 Delta R.T. 0.000 min
 Lab File: VX047513.D
 Acq: 25 Aug 2025 11:04

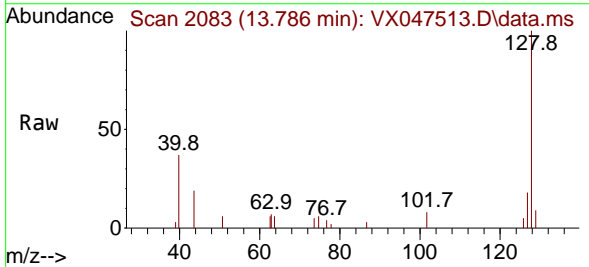
Instrument : MSVOA_X
 ClientSampleId :



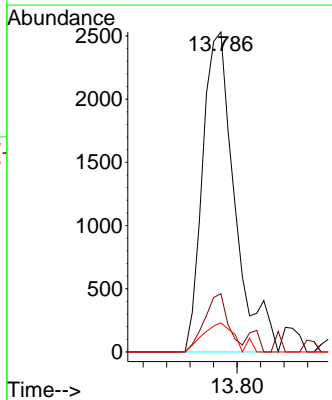
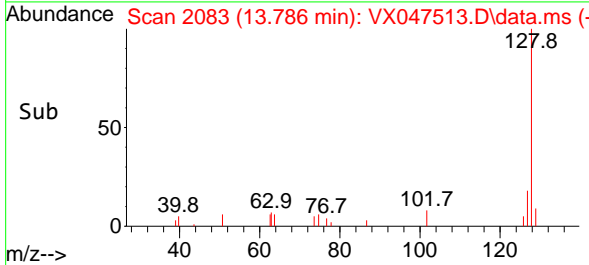
Tgt Ion:225 Resp: 1479
 Ion Ratio Lower Upper
 225 100
 223 72.4 32.2 96.6
 227 56.2 31.6 95.0

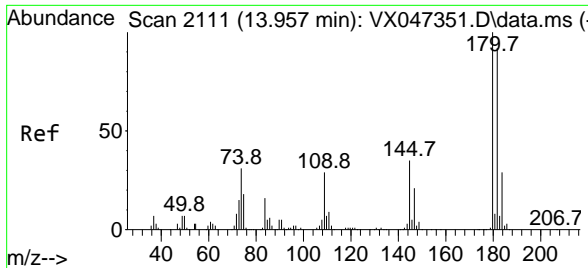


#95
 Naphthalene
 Concen: 0.253 ug/l
 RT: 13.786 min Scan# 2083
 Delta R.T. 0.012 min
 Lab File: VX047513.D
 Acq: 25 Aug 2025 11:04



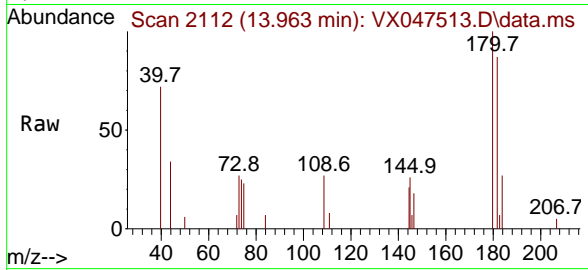
Tgt Ion:128 Resp: 4790
 Ion Ratio Lower Upper
 128 100
 127 13.6 10.1 15.1
 129 9.1 8.7 13.1





#96
 1,2,3-Trichlorobenzene
 Concen: 0.226 ug/l
 RT: 13.963 min Scan# 21
 Delta R.T. 0.006 min
 Lab File: VX047513.D
 Acq: 25 Aug 2025 11:04

Instrument :
 MSVOA_X
 ClientSampleId :



Tgt Ion:180 Resp: 1411

Ion	Ratio	Lower	Upper
180	100		
182	86.7	48.0	144.2
145	28.3	17.4	52.2

